



**PETRA GEM EXPLORATION of CANADA LTD.**  
 3540 West 41st. Ave., Vancouver, B.C. V6N 3E6  
 BUS 263-2678 RES 733-6902

1977 DRILLING REPORT  
PROVENCHER LAKE JADE PROPERTY  
LIARD M.D. MAPSHEET 104 I-7E  
42 PLACER MINING LEASES

for:

NEPHRO-JADE CANADA LTD.  
 200-3540 W. 41st. Avenue  
 Vancouver, B.C.

by:


BARRY PRICE, M.Sc., F.G.A.C.  
 PETRA GEM EXPLORATION LTD.

LIBRARY BRANCH  
 VANCOUVER  
 6959

*Part 1 of 2*

VANCOUVER, B.C.

March 25, 1978



1977 DRILLING REPORT  
PROVENCHER LAKE JADE CAMP

INTRODUCTION:

During the period of June 4 to October 10, 1977 a crew averaging 4 men under the supervision of Kirk Makepeace drilled a total of 483 boulders of jade at the Provencher Lake jade camp.

LOCATION AND ACCESS:

Provencher Lake is located 52 miles east of Dease Lake, B.C. as is shown on the accompanying map. The property is 5 miles from Cassiar Asbestos "Kutcho" property at Letain Lake and 10 miles west of the Imperial - Sumac "Kutcho" massive sulphide copper-silver-zinc deposit near Kutcho Creek. Access is by float aircraft based in Watson Lake, Y.T. or by helicopter from Dease Lake, B.C. Supplies, equipment and crew were flown from Watson Lake by Watson Lake Flying Service Ltd. and helicopter services were provided by Yukon Air Ltd. at Dease Lake. A winter tote-road constructed by Cassiar Asbestos Ltd. is used for transporting boulders to Dease Lake in winter, from Dease Lake they are trucked to Vancouver.

CLAIMS:

The company controls 42 placer mining leases and 5 hardrock mining claims as shown on the accompanying maps. A complete list of leases is provided in the appendix.

1977 PROGRAM:

During the 1977 drilling program, 8 drillers were employed (average crew size 4) under the supervision of Kirk Makepeace. The program commenced June 4 and was completed October 10. A total of 483 boulders were drilled for exploration purposes with total footage drilled 2032.14 feet. In addition, 528 feet were drilled to aid in splitting boulder E1, and 60.25 feet were drilled in JW area, but these are not included in assessment application.

Total costs for the program were \$124,725.74. Cost per foot drilled (including all boulders) was  $\$124,725.74/2032.14 = \$61.38/\text{ft}$ . In application of work on the leases this cost will be rounded out to \$60.00 per foot.

From 592 boulders drilled, 28 were selected for production, representing approximately 230 tons of jade.


Detailed core logs are not kept, but boulders are evaluated for production on the basis of jade quality estimated from core and all cores are kept at Nephro-Jade's office, 200-3540 W. 41st. Ave., Vancouver, B.C.

Detailed cost and exploration drilling data are provided on the following pages.

*Barry Price*


BARRY PRICE, M.Sc., F.G.A.C.  
Consulting Geologist

for Nephro-Jade Canada Ltd.



P.M.L. Number	Date Issued	Term	Consolidated	Consol. Date	Stream	Drainage to	Expiry Date
1517	19 May 71	20	A	17 May	unnamed	Kutcho Creek-Turnagain R.	
1518	19 May 71	20	A	17 May	unnamed	Kutcho Creek-Turnagain R.	
1519	19 May 71	20	A	17 May	unnamed	Kutcho Creek-Turnagain R.	
1520	6 May 71	20	B	17 May	Letain Creek	Kutcho Creek-Turnagain R.	
1521	10 May 71	20	B	17 May	Letain Creek	Kutcho Creek-Turnagain R.	
1522	10 May 71	20	C	17 May	unnamed	Kehlechoa River	
1523	6 May 71	20	B	17 May	unnamed	Letain Creek-Kutcho Creek	
1524	6 May 71	20	B	17 May	unnamed	Letain Creek-Kutcho Creek	
1525	10 May 71	20	B	17 May	unnamed	Letain Creek-Kutcho Creek	
1526	10 May 71	20	B	17 May	unnamed	Letain Creek-Kutcho Creek	
1527	10 May 71	20	C	17 May	unnamed	Kehlechoa River	
1528	10 May 71	20	C	17 May	unnamed	Kehlechoa River	
1529	6 May 71	20	C	17 May	unnamed	Kehlechoa River	
1530	10 May 71	20	B	17 May	unnamed	Letain Creek-Kutcho Creek	
1531	10 May 71	20	B	17 May	unnamed	Letain Creek-Kutcho Creek	
1532	6 May 71	20	D	17 May	unnamed	Kutcho Creek-Turnagain R.	
1533	10 May 71	20	D	17 May	unnamed	Kutcho Creek-Turnagain R.	
1534	6 May 71	20	A	17 May	unnamed	Kutcho Creek-Turnagain R.	
1535	10 May 71	20	D	17 May	unnamed	Kutcho Creek-Turnagain R.	
1536	19 May 71	20	D	17 May	unnamed	Kutcho Creek-Turnagain R.	
1537	6 May 71	20	A	17 May	unnamed	Kutcho Creek-Turnagain R.	
1545	21 May 71	20	C	17 May	unnamed	Kehlechoa River	
1547	2 June 71	20	D	17 May	unnamed	Letain Creek-Kutcho Creek	
1548	6 May 71	20	D	17 May	Letain Creek	Kutcho Creek-Turnagain R.	
1550	19 May 71	20	A	17 May	unnamed	Kutcho Creek-Turnagain R.	
1551	19 May 71	20	D	17 May	unnamed	Kutcho Creek-Turnagain R.	
1552	19 May 71	20	D	17 May	Letain Creek	Kutcho Creek-Turnagain R.	
1553	19 May 71	20	C	17 May	unnamed	Kehlechoa River	
1554	26 Jul 71	20	not	--	unnamed	Kehlechoa River	
1555	24 Jun 71	20	E	17 May	Letain Creek	Kutcho Creek-Turnagain R.	
1566	22 Sep 71	20	C	17 May	unnamed	Kehlechoa River	

All above owned by G. A. Ostry, 760 Polson Ave., Winnipeg, Man., FMC no. 153797 Feb. 8/77



P.M.L. Number	Date Issued	Term	Owner	Stream	Drainage to	Expiry Date
1709	13 Feb 75	5	L.D.Barr	Letain Cr.	Kutcho R.	
1712	16 Jan 75	1	P.Dupras	unnamed	Letain Cr.	
289	14 May 76	1	L. Rae	Letain Cr.	Kutcho Cr.	
290	14 May 76	1	L. Rae	Letain Cr.	Kutcho Cr.	
292	17 May 77	1	M.J.Beley	Letain Cr.	Kutcho Cr.	
293	14 May 76	1	B. Price	unnamed	Letain Cr.	
338	11 May 76	1	Nephro-Jade	Letain Cr.	Kutcho Cr.	
339	11 May 76	1	Nephro-Jade	Letain Cr.	Kutcho Cr.	
537	15 Feb 77	1	J. Sean	unnamed	Letain Cr.	
714	App.			unnamed	Letain Cr.	
715	App.			unnamed	Letain Cr.	
716	App.			unnamed	Letain Cr.	
913	App.			Letain Cr.	Kutcho Cr.	



1977 DRILLING DATA PROVENCHER LAKE  
FOOTAGE DRILLED ON LEASES AND  
LEASE CONSOLIDATIONS

CONSOLIDATION 1436 (C)

(PMLs 1522,1527,1528  
1529, 1545,1553,1566)


1360.81 Ft.  
@ \$60.00 per foot=  
\$81,648.60

CONSOLIDATION 1435 (B)

(PMLs 1520;1521,1523  
1524, 1525,1526,1530,  
1531)

417.85 ft.  
@ \$60.00 per foot=  
\$25,071.00

PML 1712	10.66 ft.	@ \$60.00/ft.	=	\$ 639.60
PML 292	38.75 ft.	@ 60.00/ft	=	2,325.00
PML 714 app.	49.25 ft.	@ 60.00/ft.	=	2,955.00
PML 715 app.	16.08 ft.	@ 60.00/ft.	=	964.80
PML 290	20.61 ft.	@ 60.00/ft.	=	1,236.60
PML 913 app.	10 ft.	@ 60.00/ft.	=	600.00



DRILLING COSTS - 1977 WAGES

EMPLOYMENT DETAILS

<u>NAME</u>	<u>RATE</u>	<u>DATES</u>	<u>TOTAL (Incl. Bonus &amp; Overtime)</u>
Bill Nehass	\$1250/mo	June 4-Sept. 20, 1977	\$ 8,596.72
John Makepeace	1000/mo	June 7-July 31, 1977	3,383.35
Brad Cairns	1000/mo	June 20-Sept. 24, 1977	5,450.60
Bob Close	1000/mo	July 5-Sept. 1, 1977	2,547.98
John Hilchey	1250/mo	July 5-Oct. 10, 1977	6,971.60
Mike Van Alderwegen	1000/mo	July 5-Oct. 7, 1977	6,153.88
Russell Nehass	1000/mo	Aug. 18-Oct. 7, 1977	3,425.37
John Cairns	1000/mo	Sept. 6-Sept. 26, 1977	1,263.10
Kirk Makepeace (foreman)	1750/mo	June 4-Oct. 10, 1977	11,650.00
			<hr/>
			\$49,442.60
			<hr/>



1977 DRILLING COSTS  
PROVENCHER LAKE JADE CAMP

B.C. Telephone	332.12
Belvedere Hotel	750.65
C.P. Air	667.13
Gilchrist Building Supplies	467.84
Jones Tent and Awning	1,778.25
Northern Metallic Ltd.	687.54
Smithers Air Service	1,174.50
J.K. Smit Ltd.	29,960.00
Tilden Ltd.	553.67
Watson Lake Flying Service	18,147.30
Yukon Air Ltd.	956.23
Okanagan Helicopters Ltd.	1,646.88
E. G. Wahlley	483.50
Panorex	112.50
Pacific Petroleum Ltd.	3,605.03
Magento Sales	1,428.51
Hougans' Dept.	585.65
Hermes Travel	3,143.65
Super Valu	387.80
Chevron Oil Ltd.	407.11
Canadian Freightways	895.24
C.N. Tel. Radio Service	191.75
Spilsbury Tindall	90.08
Canadian Propane	79.36
Deakin Equipment	289.11
Yukon Forest Products	104.32
Campground Service	6,357.42
Wages+Bonus+Overtime	49,442.60

Total Cost \$124,725.74\*

Drilling cost per foot =  $\$124,725.74 \div 2032.14 = \$61.38$  per foot.

\*Invoices will be provided upon request

*Barry Price*

BARRY PRICE, M.Sc.

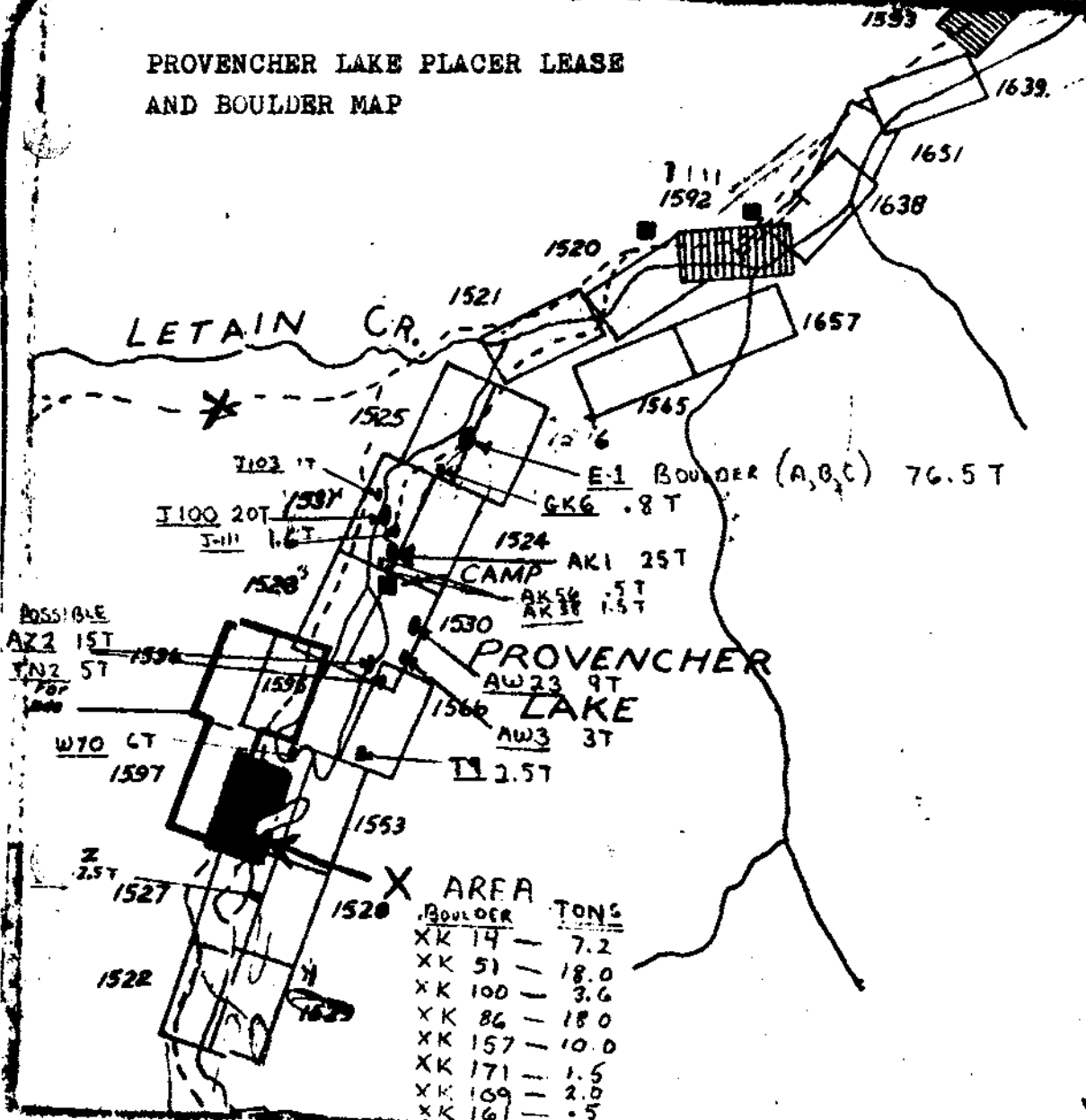


1977 DRILLING DATA PROVENCHER LAKE

<u>AREA</u>	<u>BOULDERS</u>	<u>FEET</u>
A	25	108.08
B	8	28.58
E	35	84.33
G	9	24.08
J	34	79.75
L	16	38.75
O	9	16.08
ON	2	6.33
R	14	49.25
T	41	125.41
V	1	26.66
X	238	1,029.58
Z	12	49.08
AW	13	90.58
AZ	1	17.66
D	12	12.58
FU	13	41.21
FK	15	30.83
LL	1	10.00
MP	3	4.33
TN	4	22.33
W	41	128.25
H	1	8.41
JW	44	60.25
TOTALS	592	2,092.39*

\* Total applicable 2032.14 exludes material on JW claims

PROVENCHER LAKE PLACER LEASE  
AND BOULDER MAP

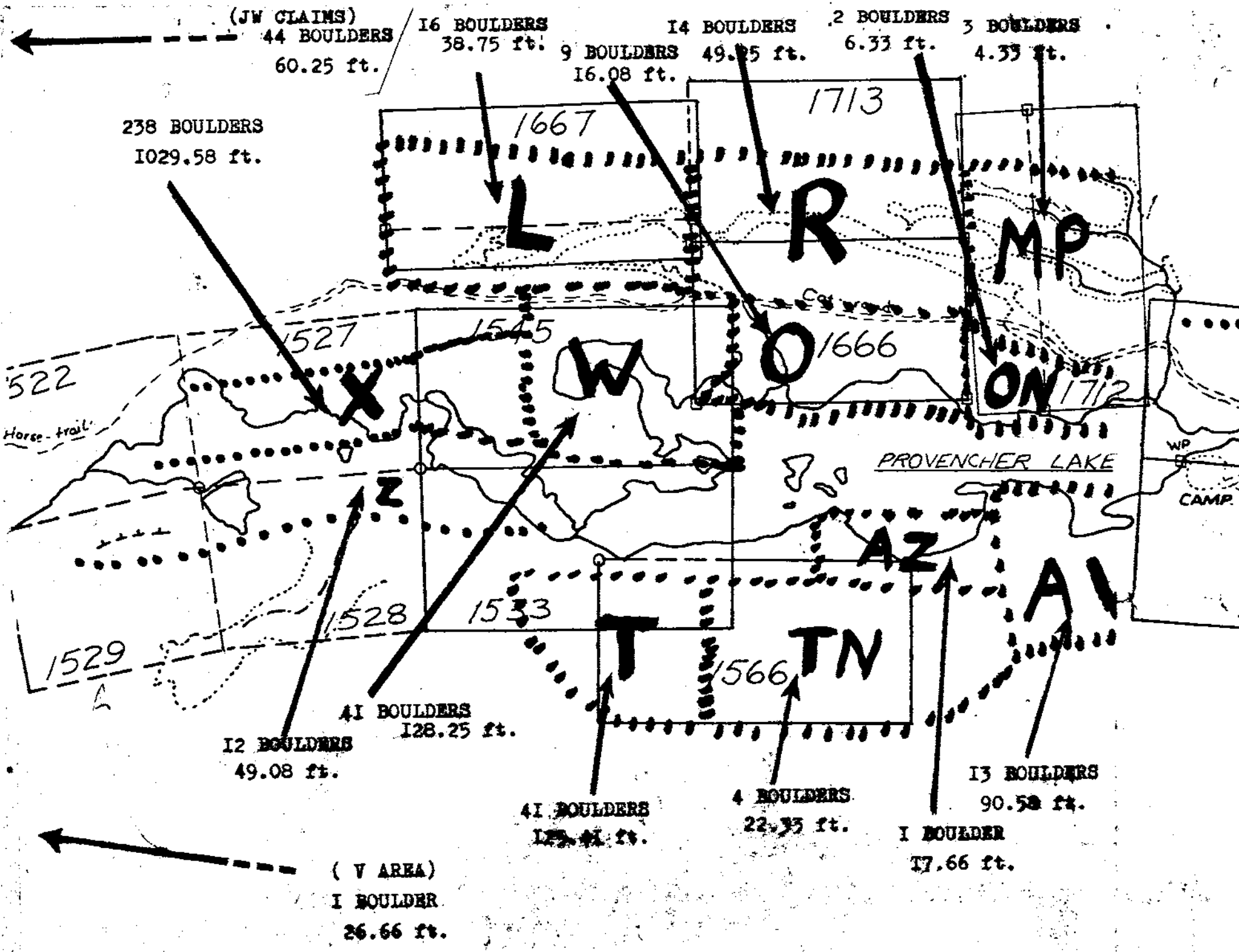


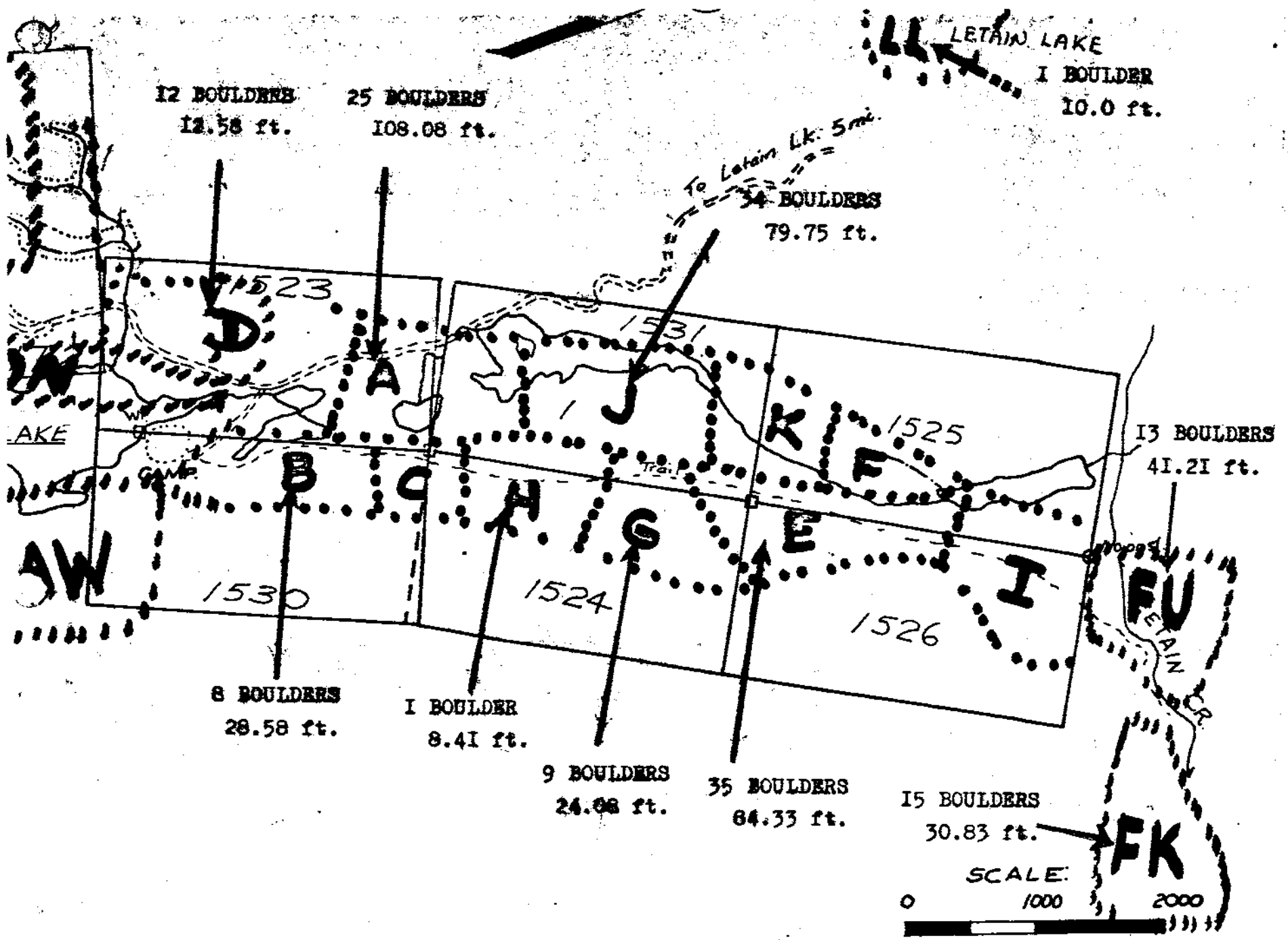
Boulder	TONS
XK 14	7.2
XK 51	18.0
XK 100	3.6
XK 86	18.0
XK 157	10.0
XK 171	1.5
XK 169	2.0
XK 161	.5
XK 107	4.0
YK 90	4.0
XK 220	4.0
XK 136	6.0
XK 108	5

POSSIBLE

XK 187	12 T
XK 162	12 T
XK 83	6 T
XK 19	15 T
XK 166	11 T
XK 6	5 T

GENERAL LOCATION OF ALL GEM QUALITY BOULDERS AND MARGINAL BOULDERS LOCATED AND DRILLED IN 1977 SEASON.





NEPHRO-JADE CANADA LTD

PLACER CLAIMS - PROVENCHER LK.  
SHOWING DRILLING AREAS  
1977