

REPORT
ON
PROSPECTING

SUCCESS and MOLYBDENUM CLAIMS

Skeena Division

NTS 103/P5

Owned by R. Dunn

Report by R. Dunn

24 June, 1978

Part 1 of 2

FEDERAL BUREAU OF INVESTIGATION WASHINGTON, D.C. 20535
6961

TABLE OF CONTENTS

Introduction	Page 1
Interpretation	2
Cost Statement	5
Qualifications	6
Index Map	Map 1
Sample Map	2

INTRODUCTION

The claims are situated 1 km north of Alice Arm, and 5 km SW of the town of Alice Arm. The elevation of the claims is between approximately 1000 and 2000 ft A.S.L. The terrain is rugged, a mixture of timbered slopes and generally swampy tablelands. Access was by helicopter. The helicopter was also used for air photos.

The core of the property is the old Tidewater workings, the Molybdenum mineralization occurring in banded quartz veinlets. The property is currently owned by R. Dunn. In view of the strong demand for Molybdenum, the property may have possibilities as a high-grade mine.

The current exploration was conducted with the primary objective of determining if the high-grade showings fit in with the general "shell" or "ring" type deposition typical of known Alice Arm porphyry deposits. An area about 1500 x 1000 m was examined.

INTERPRETATION

A general survey of the area was conducted to determine the size and shape of the granitic intrusion, and to attempt to determine if the molybdenum mineralization of the old Tidewater workings extended to the margins of the contact zone about the intrusive.

Extensive rock samples were collected and returned for inspection. Following page, and Map 2 note the samples and their respective positions.

The granitic intrusion is of roughly oval shape, the long axis trending to the northeast. The stock intrudes into argillaceous host rock. Samples of hornfels have been found at the contact zone. Andesite or basaltic dykes are found trending roughly along the axis of the intrusive.

In the creek bed, widespread molybdenum mineralization is present in banded quartz veins, and high-grade samples are found in the old adits and stope. Minor amounts of molybdenum has been noted in the hornfels near the contact zone. Molybdenum was also found much lower in the creek and quite distant from the surface expression of the intrusive. Minor amounts of molybdenum was also noted in the leucogranite of the intrusive stock, especially to the south side. It was noted that the core of the stock was generally barren of any appreciable amount of molybdenum.

In view of the high grade of mineralization in the old workings, and of evidence of disseminated molybdenum along the margins of the contact, it is the writers opinion that further work should be done.. A program should include drilling to depth on the south side of the stock, and from the argillaceous side of the contact.

Rock Samples

<u>No.</u>	<u>Remarks</u>
21	Alice Arm intrusion- qtz flooding, microveinlets
22	as above
23	Argillic alteration of AA intrusion- qtz flooding
24	Basalt dyke
25	Basalt dyke - 30 meters exposed, strike 060
26	silitic argillite
27	siltstone
28	siltstone
29	AA granite
30	granite
31	granite
32	leucogranite with moly
33	bedded sandstone/siltstone - banded laminate 10 ft section visible str 130 dip 37 NE
34	granite
35	hornfels- siltstone
36	granite with minor moly
37	granite
38	granite
39	outcrop- south side of creek py
40	granite
41	float- moly along fracture plane
42	granite- rusted py
43	granite- micro qtz veining
45:	altereded granite near souther contact

<u>No.</u>	<u>Remarks</u>
45a	Hornfels- contact
46	good moly along shear plane
48	siltstone
49	basalt- py
50	hornfels- moly
51	granite- 5" qtz veins
52	float - granite py, minor moly
53	qtz- moly
52a	hornfels
54a	qtz veins 3-4" thick along steep plane 120 str/ dip 65 SW
54b	hornfels
55	qtz with much moly
56	andesite dyke
57	qtz veins
58	hornfels- qtz veins
59	fine grained hornfels, qtz with moly
60	qtz, much moly
61	creek bedrock- granite with qtz veins, moly
62	adit sample- moly
63	hornfels with qtz stringers- moly
64	fine grained biotite hornfels
65	hornfels
66	bedrock- qtz veins with moly
67	Gossan- fine grained with qtz stringers
68	minor py with moly

STATEMENT OF COST

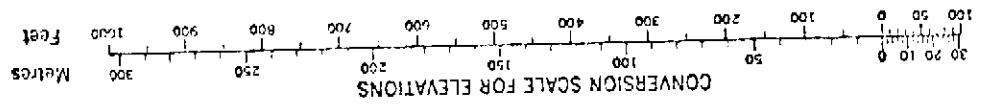
a)	Wages 3 days @ 40 per day/man, 2 men 3 July 1977 to 5 July 1977	\$ 240
b)	Food and accomodation 2 nights at \$ 20 for accomodation 3 days food at \$ 10 each - 2 men	40 60
c)	Transportation 3.6 hours helicopter @ \$ 125/ hr Terrace to Alice Arm to Terrace 3- 5 July, 1977	450
g)	Report	40
h)	Air photos developed and printed	<u>10</u>
	TOTAL COST	\$ 840



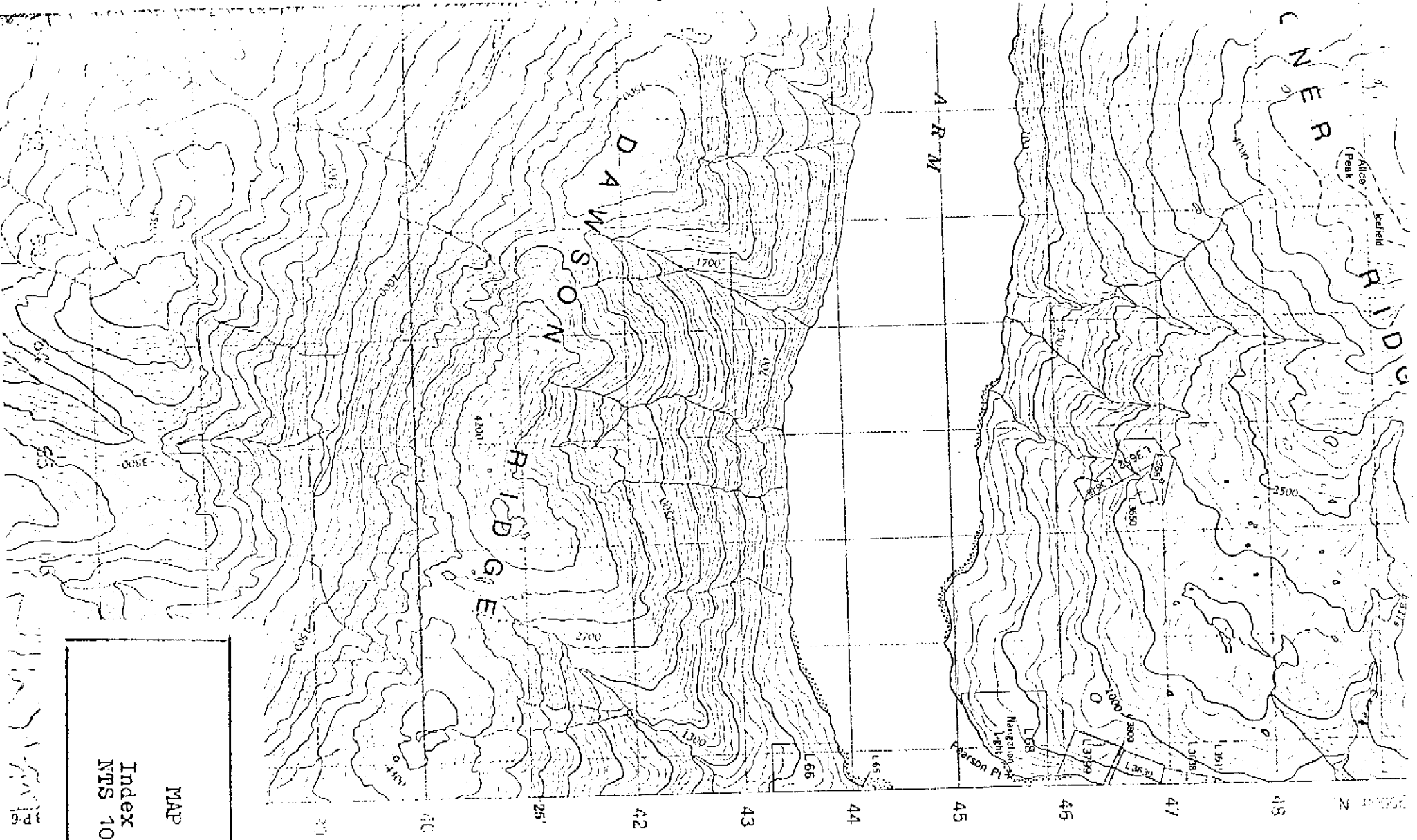
QUALIFICATIONS

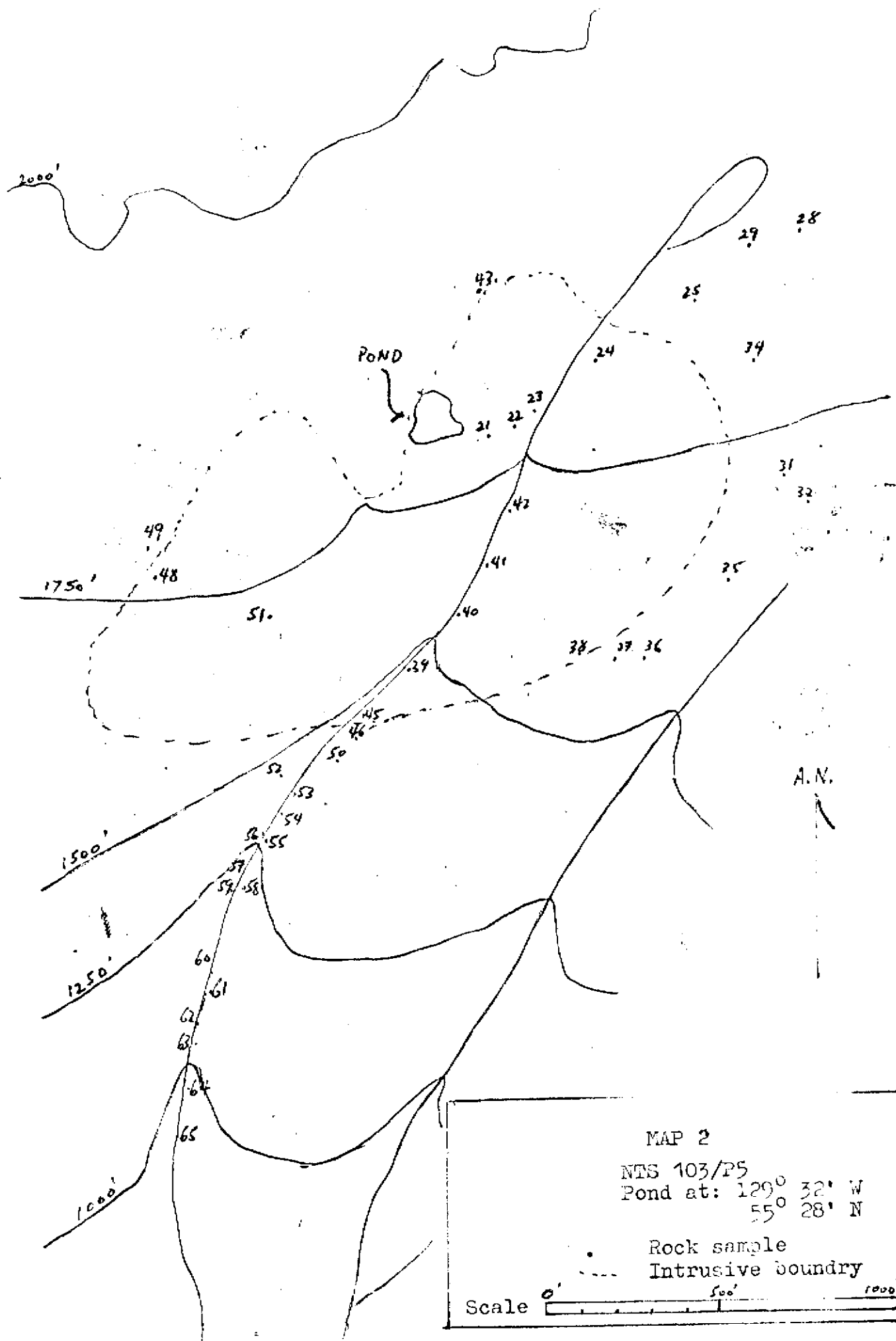
The writer has been an active prospector since 1970. In addition to taking the B.C. and Yukon Chamber of Mines Prospecting course, the writer has taken courses at Concordia University of Montreal in Geology, and Structural Geology; and at U.B.C., Minerology.

TN
★
11



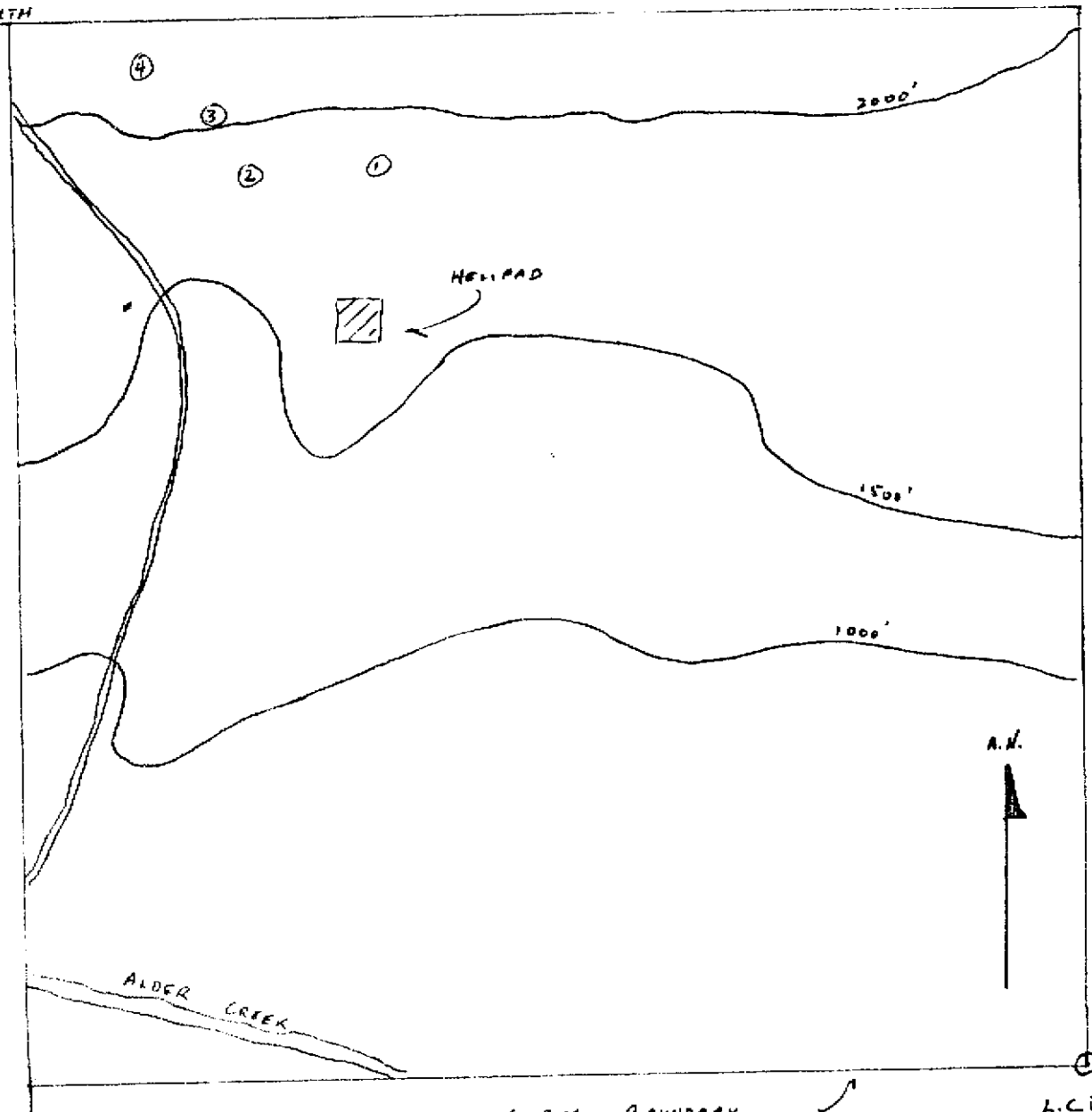
MAP 1
Index Map
NTS 103/P5





MAP 2
 NTS 103/P5
 Pond at: $129^{\circ} 32' W$
 $55^{\circ} 28' N$
 • Rock sample
 - - - - - Intrusive boundary
 Scale 0' 500' 1000'

6100 N NORTH



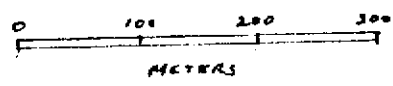
498000 N. EAST

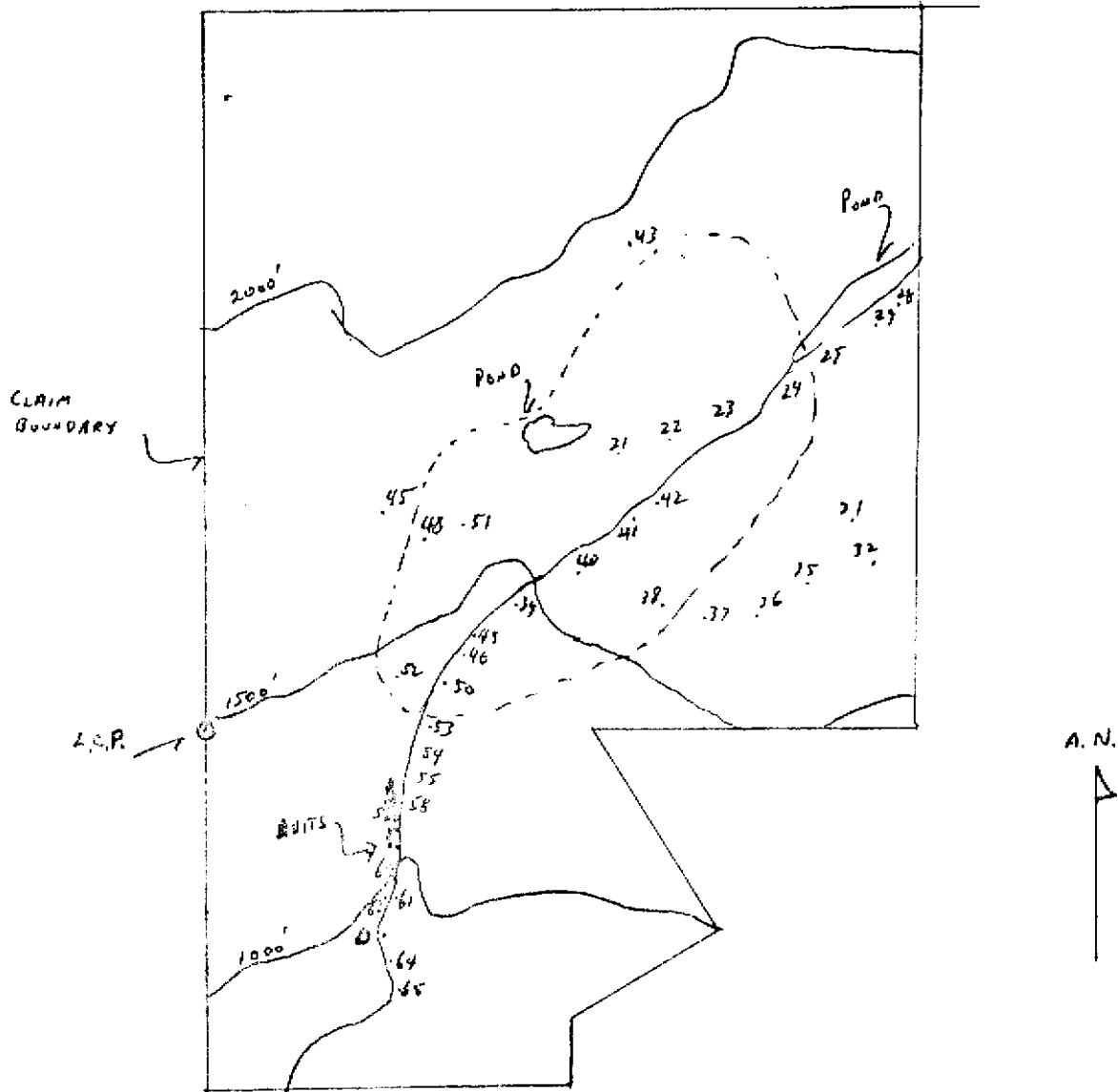
CLAIM BOUNDARY

L.C.P.

TWIN
 Map 2
 Sample Map

SCALE:





Map 2 rvsd
 103/85
 TIME GROUP
 legend
 ----- intrusive
 . rock sample
 scale: 1: 10,000
 meters

A horizontal scale bar with markings at 0, 100, 200, 300, 400, and 500 meters.