

ASSESSMENT REPORT

describing

PERCUSSION DRILLING

on the

QR1 and QR3 Claims

CARIBOO MINING DIVISION

93-A-12W

52°40'N 121°47W

OWNER - NEWCONEX CANADIAN EXPLORATION LTD.

OPERATORS - GOLD FIELDS MINING CORPORATION  
DOME EXPLORATION (CANADA) LTD.

CONSULTANT - RICHARDSON GEOLOGICAL CONSULTING LTD.

Report by

A. Gambardella and P.W. Richardson, P.Eng.

Vancouver, British Columbia November 17, 1978.

*A. Gambardella*

*P. W. Richardson*

6967

TABLE OF CONTENTS

	<u>Page</u>
INTRODUCTION.....	1
PERCUSSION DRILLING.....	2
ANALYSES.....	3
SUMMARY OF RESULTS.....	4
CONCLUSIONS.....	4
STATEMENT OF EXPENDITURES.....	5
STATEMENT OF QUALIFICATIONS.....	6

FIGURES

Figure 1 - INDEX AND CLAIM MAP - following page.....	1
Figure 2 - DRILL LOCATION MAP	(In Pocket)

APPENDICES

APPENDIX I PERCUSSION DRILL LOGS
APPENDIX II ANALYSES CERTIFICATES

## INTRODUCTION

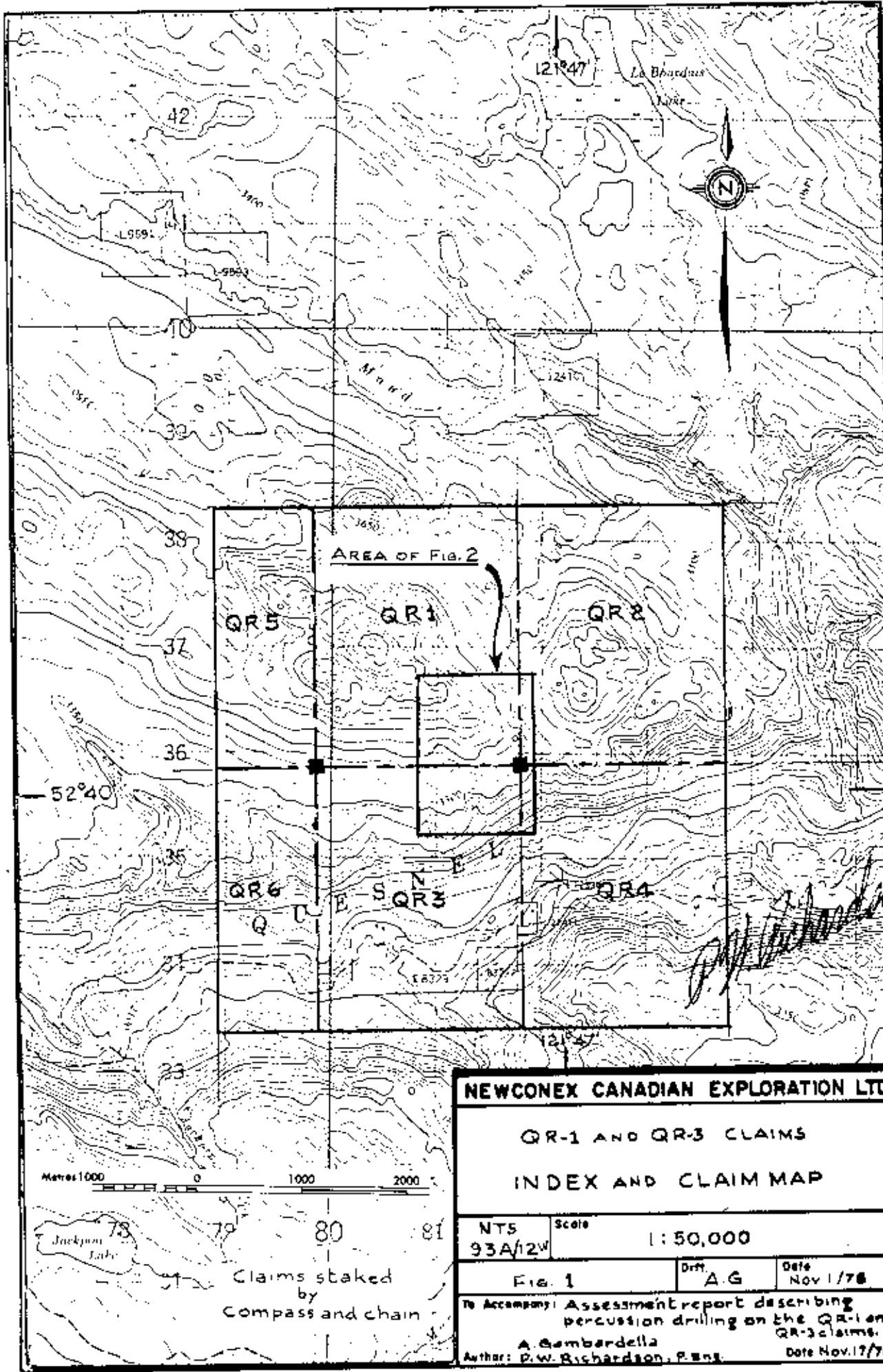
The QR claims are approximately 54 kilometres southeast of Quesnel in the Cariboo Mining Division. The property is on N.T.S. Sheet 93-A-12 at latitude 52°40' and longitude 121°47'. The claims straddle the valley of the Quesnel River which cuts across the southern half of the property. Elevations range from 2100 to 4050 feet.

Access to the QR claims is by a 40 kilometre logging road which leads off Highway 26, nineteen kilometres east of Quesnel, to Nyland Lake. Thence, a rough 4-wheel drive road leads south-southeasterly to the property, a distance of about 25 kilometres.

The property was staked originally as the PR claims (PR 1-4 inclusive, 36 units) in 1976 by personnel of the Cariboo Project, a joint venture project financed by Newconex Canadian Exploration Ltd. and Dome Exploration (Canada) Ltd. and supervised by Fox Geological Consultants Ltd. In 1977 the PR claims were abandoned and the property was restaked as the QR claims described as follows:

QR1	-	20 units
QR2	-	20 units
QR3	-	20 units
QR4	-	20 units
QR5	-	10 units
QR6	-	10 units

The claims are owned by Newconex Canadian Exploration Ltd. The 1978 program was financed by Gold Fields Mining



**NEWCONEX CANADIAN EXPLORATION LTD.**

**QR-1 AND QR-3 CLAIMS  
INDEX AND CLAIM MAP**

NTS 93A/12W	Scale 1:50,000	Drift A.G	Date Nov 1/78
Fig. 1			
To Accompany: Assessment report describing percussion drilling on the QR-1 and QR-3 claims.			
Author: P.W. Richardson, P.Eng.			Date Nov. 17/78

Metres 1000 0 1000 2000

78 79 80 81  
Jackson Lake

Claims staked  
by  
Compass and chain

Corporation and Dome Exploration (Canada) Ltd. A total of 2,028 metres comprising 25 holes were drilled on claims QR1 and QR3. The purpose of this work was to explore for economic concentrations of gold and copper along the margin of an alkalic stock which outcrops to the south of the drill area.

The program was supervised by A. Gambardella. Drilling on the QR1 and QR3 claims started on August 14 and was completed on September 26, 1978.

#### PERCUSSION DRILLING

L. Spence Enterprises was contracted for the percussion drilling. The equipment used was a standard Copco drill mounted on a Flex Track Nodwell. A 3 5/8" bit, with a 2 1/2" inside diameter, was used for overburden drilling, and a 2" bit was used for bedrock. The cuttings were split at the drill site by a 1:8 HUMBLE electric splitter to yield approximately 5 lbs. of sample for each 3 metre section.

A total of 2,028 metres comprising 25 holes were drilled. All holes, with the exception of P-10, P-11 and P-13A, were drilled at an inclination of 90°. The lengths of the holes range from 42 to 90 metres. The depth of overburden ranges from 3 to 13 metres and averages about 5 metres.

Approximately 2.2 kilometres of drill access roads were built. A HD-11 bulldozer, operated by L. Spence Enterprises personnel, was used for the work.

The percussion cuttings were examined in the field and they are described in APPENDIX I.

### ANALYSES

The samples were analyzed by geochemical methods for copper and gold by Acme Analytical Laboratories Ltd. of Burnaby, B.C.

#### Sample Preparation

The samples are dried at 75°C and ground to -100 mesh.

#### Geochemical analysis of Cu

A .50 gram sample is digested with dilute aqua regia in boiling water bath and diluted to 10 mls with demineralized water. Determination is by Atomic Absorption from solution.

#### Geochemical analysis of Au

A 10 gram sample which has been ignited overnight at 600°C is digested hot, with dilute aqua regia, and the clear solution is extracted with Methyl Isobuthyl Ketone. Determination is by Atomic Absorption from the Methyl Isobuthyl Ketone extractant with background correction.

### SUMMARY OF RESULTS

The copper content of the percussion drill cuttings ranges from 5 ppm to 685 ppm, and the gold content ranges from .005 ppm to 2.4 ppm. Geological data obtained by examination of drill cuttings indicate that the area is underlain by interbedded volcanic and sedimentary rocks which are believed to be of Triassic age. The sedimentary rocks are composed of argillite and tuff with lesser amounts of interbedded greywacke. These sediments underlie the western and central parts of the map area. Hornblende-augite basalt was intersected in several drill holes along the eastern margin of the map area. The highest concentrations of gold and copper are associated with pyrite-epidote alteration in the hornblende-augite basalt.

### CONCLUSIONS

The 1978 percussion drill program on claims QR1 and QR3 did not locate economic concentrations of copper and gold within a zone of pyritic sedimentary and volcanic rocks.

STATEMENT OF EXPENDITURES

## Percussion drilling

2,028 metres (6,653.5 feet) @ \$ 2.95/foot \$19,627.83

Mobilization and demobilization 500.00

Drill site preparation and access  
roads

70 hours (HD-11 Bulldozer) @ 35.00/hour 2,450.00

Analyses 600 samples @ 5.75/sample 3,450.00TOTAL \$26,027.83

*A. Samboridis*      *P. W. Richardson*



STATEMENT OF QUALIFICATIONS

P.W. Richardson	- P.Eng. (B.C.)
	B.A.Sc. (1949) UBC - Geological Engineering
	M.A. Sc. (1950) UBC - Geology
	Ph.D. (1955) MIT - Economic Geology & Geochemistry
A. Gambardella	B.Sc. (1961) City University of New York - Geology

*A. Gambardella*      *P.W. Richardson*

APPENDIX I

PERCUSSION DRILL LOGS

PERCUSSION DRILL LOGHole No. P-10

Claim: QR-1      Coordinates: 16+00E; 0+00N  
 Azimuth: 0°      Inclination: 65°      Length in Metres: 75  
 Collar Elevation: 3500 feet

Interval (Metres)	Sample Number	Analyses (in ppm)		Description of Cuttings
		Cu	Au	
0 - 3				casing in overburden
3 - 6	27601	68	.020	Grey-green, fine grained tuff. Pyrite 6%. Epidote 2-3%. No change to end of hole.
6 - 9	02	70	.020	
9 - 12	03	61	.005	
12 - 15	04	86	.005	
15 - 18	05	84	.040	
18 - 21	06	82	.005	
21 - 24	07	80	.005	
24 - 27	08	63	.020	
27 - 30	09	54	.005	
30 - 33	10	64	.005	
33 - 36	11	53	.060	
36 - 39	12	72	.005	
39 - 42	13	78	.005	
42 - 45	14	80	.005	
45 - 48	15	90	.010	
48 - 51	16	92	.010	
51 - 54	17	96	.005	
54 - 57	18	82	.005	
57 - 60	19	70	.080	
60 - 63	20	68	.010	
63 - 66	21	70	.020	
66 - 69	22	58	.005	
69 - 72	23	70	.005	
72 - 75	27624	72	.005	

PERCUSSION DRILL LOGHole No. P-11

Claim: QR-1                      Coordinates: 16+05E; 0+75S  
 Azimuth: 0°                      Inclination: 65°      Length in Metres: 87  
 Collar Elevation: 3480 feet

Interval (Metres)	Sample Number	Analyses (in ppm)		Description of Cuttings
		Cu	Au	
0 - 3				casing in overburden
3 - 6	27625	92	.005	Grey, fine to medium grained hornblende porphyry. Pyrite 3%. No change to bottom of hole.
6 - 9	26	35	.005	
9 - 12	27	90	.005	
12 - 15	28	56	.005	
15 - 18	29	92	.005	
18 - 21	30	72	.005	
21 - 24	31	92	.005	
24 - 27	32	74	.005	
27 - 30	33	65	.005	
30 - 33	34	62	.020	
33 - 36	35	82	.005	
36 - 39	36	102	.005	
39 - 42	37	118	.005	
42 - 45	38	100	.005	
45 - 48	39	78	.005	
48 - 51	40	84	.005	
51 - 54	41	94	.005	
54 - 57	42	102	.020	
57 - 60	43	172	.005	
60 - 63	44	140	.005	
63 - 66	45	74	.005	
66 - 69	46	78	.005	
69 - 72	47	76	.005	
72 - 75	48	72	.005	
75 - 78	49	82	.005	
78 - 81	50	58	.010	
81 - 84	51	57	.005	
84 - 87	27652	59	.005	

PERCUSSION DRILL LOGHole No. P-12Claim: QR-3 Coordinates: 16+10E; 1+75SAzimuth: \_\_\_\_\_ Inclination: 90° Length in Metres: 84Collar Elevation: 3450 feet

Interval (Metres)	Sample Number	Analyses (in ppm)		Description of Cuttings
		Cu	Au	
0 - 3				casing in overburden
3 - 6	27653	98	.005	Grey, fine-grained tuff. Epidote 2%. Pyrite 4%.
6 - 9	54	102	.005	
9 - 12	55	92	.005	
12 - 15	56	72	.005	
15 - 18	57	51	.010	
18 - 21	58	68	.005	
21 - 24	59	62	.005	
24 - 27	60	108	.005	
27 - 30	61	192	.020	
30 - 33	62	63	.005	
33 - 36	63	56	.010	
36 - 39	64	29	.010	
39 - 42	65	38	.005	
42 - 45	66	8	.005	
45 - 48	67	12	.005	
48 - 51	68	8	.005	
51 - 54	69	6	.005	
54 - 57	70	6	.040	
57 - 60	71	5	.005	
60 - 63	72	8	.005	
63 - 66	73	10	.010	
66 - 69	74	10	.020	
69 - 72	75	14	.005	
72 - 75	76	15	.010	
75 - 78	77	11	.005	
78 - 81	78	10	.005	
81 - 84	79	10	.005	

PERCUSSION DRILL LOGHole No. P-13AClaim: QR-1 Coordinates: 15+95E; 2+55NAzimuth: 0° Inclination: 65° Length in Metres: 51Collar Elevation: 3640 feet

Interval (Metres)	Sample Number	Analyses (in ppm)		Description of Cuttings
		Cu	Au	
0 - 3				casing in overburden
3 - 6	27680	90	.005	Black, carbonaceous argillite. Pyrite 2-3%. No change to bottom on hole.
6 - 9	81	82	.005	
9 - 12	82	120	.005	
12 - 15	83	80	.005	
15 - 18	84	86	.005	
18 - 21	85	59	.010	
21 - 24	86	82	.005	
24 - 27	87	60	.005	
27 - 30	88	56	.005	
30 - 33	89	68	.005	
33 - 36	90	70	.005	
36 - 39	91	66	.005	
39 - 42	92	72	.005	
42 - 45	93	72	.005	
45 - 48	94	74	.005	
48 - 51	95	72	.005	

PERCUSSION DRILL LOGHole No. P-13BClaim: QR-1 Coordinates: 15+95E; 2+55NAzimuth: \_\_\_\_\_ Inclination: 90° Length in Metres: 90Collar Elevation: 3640 feet

Interval (Metres)	Sample Number	Analyses (in ppm)		Description of Cuttings
		Cu	Au	
0 - 3				casing in overburden
3 - 6	27696	112	.005	Black, carbonaceous argillite. Pyrite 2-3%. No change to bottom of hole.
6 - 9	97	94	.005	
9 - 12	98	106	.005	
12 - 15	99	84	.005	
15 - 18	700	78	.005	
18 - 21	701	96	.010	
21 - 24	702	98	.005	
24 - 27	703	92	.005	
27 - 30	704	72	.020	
30 - 33	705	58	.010	
33 - 36	706	52	.005	
36 - 39	707	58	.005	
39 - 42	708	80	.005	
42 - 45	709	64	.005	
45 - 48	710	63	.005	
48 - 51	711	68	.005	
51 - 54	712	70	.005	
54 - 57	713	68	.005	
57 - 60	714	90	.005	
60 - 63	715	67	.005	
63 - 66	716	70	.005	
66 - 69	717	50	.005	
69 - 72	718	52	.005	
72 - 75	719	72	.010	
75 - 78	720	60	.005	
78 - 81	721	70	.005	
81 - 84	722	76	.005	
84 - 87	723	43	.005	
87 - 90	724	20	.005	

PERCUSSION DRILL LOGHole No. P-14Claim: QR-1 Coordinates: 15+95E; 1+45NAzimuth: \_\_\_\_\_ Inclination: 90° Length in Metres: 87Collar Elevation: 3580 feet

Interval (Metres)	Sample Number	Analyses (in ppm)		Description of Cuttings
		Cu	Au	
0-3				casing in overburden
3-6	27725	38	.005	Medium grey, fine grained greywacke. Pyrite 7%. No change to bottom of hole.
6-9	26	64	.005	
9-12	27	90	.005	
12-15	28	51	.005	
15-18	29	50	.005	
18-21	30	53	.005	
21-24	31	38	.005	
24-27	32	34	.005	
27-30	33	38	.005	
30-33	34	42	.005	
33-36	35	51	.005	
36-39	36	70	.005	
39-42	37	72	.005	
42-45	38	68	.010	
45-48	39	70	.005	
48-51	40	78	.005	
51-54	41	76	.005	
54-57	42	74	.005	
57-60	43	72	.005	
60-63	44	74	.005	
63-66	45	82	.010	
66-69	46	80	.005	
69-72	27748	84	.005	
72-75	49	86	.005	
75-78	50	84	.005	
78-81	51	92	.005	
81-84	52	96	.005	
84-87	53	92	.005	



PERCUSSION DRILL LOGHole No. P-15Claim: QR-1 Coordinates: 16+00E; 0+85NAzimuth: \_\_\_\_\_ Inclination: 90° Length in Metres: 90Collar Elevation: 3560 Feet

Interval (Metres)	Sample Number	Analyses (in ppm)		Description of Cuttings
		Cu	Au	
0-3				casing in overburden
3-6	27754	72	.005	Dark grey argillite. Pyrite 7-8%. No change to bottom of hole.
6-9	55	49	.005	
9-12	56	52	.005	
12-15	57	58	.005	
15-18	58	62	.005	
18-21	59	56	.005	
21-24	60	47	.005	
24-27	61	30	.005	
27-30	62	46	.005	
30-33	63	63	.005	
33-36	64	58	.005	
36-39	65	60	.005	
39-42	66	46	.005	
42-45	67	50	.005	
45-48	68	59	.005	
48-51	69	72	.005	
51-54	70	70	.005	
54-57	71	86	.005	
57-60	72	74	.005	
60-63	73	64	.005	
63-66	74	78	.005	
66-69	75	88	.005	
69-72	76	102	.005	
72-75	77	94	.020	
75-78	78	98	.005	
78-81	79	104	.005	
81-84	80	106	.010	
84-87	81	122	.010	
87-90	82	130	.020	

PERCUSSION DRILL LOGHole No. P-16

Claim: QR-1                      Coordinates: 15+00E; 1+25N  
 Azimuth: \_\_\_\_\_              Inclination: 90°      Length in Metres: 90  
 Collar Elevation: 3590 feet

Interval (Metres)	Sample Number	Analyses (in ppm)		Description of Cuttings
		Cu	Au	
0-9				casing in overburden
9-12	27783	52	.005	Dark grey argillite, pyrite 6-8%. No change to bottom of hole.
12-15	84	43	.005	
15-18	85	54	.005	
18-21	86	60	.005	
21-24	87	40	.010	
24-27	88	48	.010	
27-30	89	61	.010	
30-33	90	60	.005	
33-36	91	54	.020	
36-39	92	50	.005	
39-42	93	45	.005	
42-45	94	51	.010	
45-48	95	48	.030	
48-51	96	49	.010	
51-54	97	48	.005	
54-57	98	61	.005	
57-60	99	68	.005	
60-63	800	69	.005	
63-66	01	54	.005	
66-69	02	53	.010	
69-72	03	46	.005	
72-75	04	48	.005	
75-78	05	48	.005	
78-81	06	46	.005	
81-84	07	48	.005	
84-87	08	44	.005	
87-90	09	43	.020	



PERCUSSION DRILL LOGHole No. P-18

Claim: QR-1                      Coordinates: 14+00E; 1+85N  
 Azimuth: \_\_\_\_\_              Inclination: 90°      Length in Metres: 90  
 Collar Elevation: 3630 feet

Interval (Metres)	Sample Number	Analyses (in ppm)		Description of Cuttings
		Cu	Au	
0-3				casing in overburden
3-6	27839	52	.005	Dark grey argillite. Pyrite 5%. No change to bottom of hole.
6-9	40	39	.005	
9-12	41	43	.005	
12-15	42	44	.005	
15-18	43	58	.005	
18-21	44	40	.005	
21-24	45	42	.005	
24-27	46	31	.005	
27-30	47	45	.005	
30-33	48	31	.005	
33-36	49	50	.005	
36-39	50	42	.010	
39-42	51	52	.005	
42-45	52	50	.010	
45-48	53	62	.005	
48-51	54	70	.005	
51-54	55	52	.010	
54-57	56	48	.020	
57-60	57	47	.005	
60-63	58	43	.020	
63-66	59	52	.005	
66-69	60	54	.005	
69-72	61	62	.010	
72-75	62	64	.010	
75-78	63	68	.005	
78-81	64	68	.005	
81-84	65	62	.005	
84-87	66	68	.005	
87-90	67	68	.005	

PERCUSSION DRILL LOGHole No. p-19Claim: QR-1 Coordinates: 13+00E; 1+25NAzimuth: \_\_\_\_\_ Inclination: 90° Length in Metres: 60Collar Elevation: 3550 feet

Interval (Metres)	Sample Number	Analyses (in ppm)		Description of Cuttings
		Cu	Au	
0-3				casing in overburden
3-6	27868	47	.005	Dark grey argillite. Pyrite 3-4%. No change to bottom of hole.
6-9	69	56	.005	
9-12	70	62	.010	
12-15	71	52	.005	
15-18	72	42	.005	
18-21	73	40	.005	
21-24	74	44	.005	
24-27	75	40	.005	
27-30	76	40	.005	
30-33	77	48	.005	
33-36	78	50	.005	
36-39	79	58	.005	
39-42	80	62	.005	
42-45	81	46	.005	
45-48	82	42	.005	
48-51	83	48	.005	
51-54	84	42	.005	
54-57	85	42	.005	
57-60	86	43	.005	

PERCUSSION DRILL LOGHole No. P-20Claim: QR-1 Coordinates: 13+95E; 0+80NAzimuth:        Inclination: 90° Length in Metres: 42Collar Elevation: 3570 feet

Interval (Metres)	Sample Number	Analyses (in ppm)		Description of Cuttings
		Cu	Au	
0-3				casing in overburden
3-6	27887	82	.005	Dark grey argillite. Pyrite 3-4%. No change to bottom of hole.
6-9	88	92	.005	
9-12	89	90	.005	
12-15	90	92	.005	
15-18	91	74	.005	
18-21	92	34	.005	
21-24	93	24	.005	
24-27	94	38	.005	
27-30	95	76	.005	
30-33	96	38	.005	
33-36	97	37	.005	
36-39	98	31	.005	
39-42	99	26	.005	

## PERCUSSION DRILL LOG

Hole No. P-21

Claim: QR-1 Coordinates: 13+96E; 0+70SAzimuth: \_\_\_\_\_ Inclination: 90° Length in Metres: 90Collar Elevation: 3500 feet

Interval (Metres)	Sample Number	Analyses (in ppm)		Description of Cuttings
		Cu	Au	
0-3				casing in overburden
3-6	27900	68	.005	Grey-green, fine grained tuff. Epidote 2%, pyrite 4%. No change to bottom of hole.
6-9	01	60	.005	
9-12	02	62	.005	
12-15	03	80	.005	
15-18	04	82	.005	
18-21	05	92	.005	
21-24	06	96	.080	
24-27	07	80	.005	
27-30	08	112	.020	
30-33	09	215	.005	
33-36	10	86	.005	
36-39	11	146	.005	
39-42	12	122	.005	
42-45	13	76	.010	
45-48	14	66	.010	
48-51	15	80	.005	
51-54	16	62	.005	
54-57	17	76	.005	
57-60	18	42	.010	
60-63	19	52	.005	
63-66	20	62	.030	
66-69	21	70	.140	
69-72	22	100	.005	
72-75	23	108	.005	
75-78	24	62	.005	
78-81	25	94	.010	
81-84	26	74	.010	
84-87	27	70	.020	
87-90	28	74	.010	

PERCUSSION DRILL LOGHole No. P-22

Claim: QR-3 Coordinates: 13+90E; 1+50S  
 Azimuth: \_\_\_\_\_ Inclination: 90° Length in Metres: 42  
 Collar Elevation: 3420 feet

Interval (Metres)	Sample Number	Analyses (in ppm)		Description of Cuttings
		Cu	Au	
0-3				casing in overburden
3-6	27929	32	.020	Grey-green, fine grained tuff. Trace of epidote, pyrite 4%. No change to bottom of hole.
6-9	30	38	.005	
9-12	31	33	.005	
12-15	32	32	.005	
15-18	33	24	.005	
18-21	34	29	.005	
21-24	35	50	.005	
24-27	36	112	.005	
27-30	37	70	.020	
30-33	38	76	.005	
33-36	39	98	.005	
36-39	40	106	.005	
39-42	41	104	.005	



PERCUSSION DRILL LOGHole No. P-23Claim: QR-1 Coordinates: 16+98E; 0+55SAzimuth: \_\_\_\_\_ Inclination: 90° Length in Metres: 90Collar Elevation: 3470 feet

Interval (Metres)	Sample Number	Analyses (in ppm)		Description of Cuttings
		Cu	Au	
0-6				casing in overburden
6-9	27942	76	.010	Hornblende porphyry. Epidote 2%. Pyrite 1-3%. No change to bottom of hole.
9-12	43	52	.005	
12-15	44	102	.005	
15-18	45	72	.005	
18-21	46	176	.005	
21-24	47	132	.005	
24-27	48	65	.005	
27-30	49	280	.930	
30-33	50	270	.110	
33-36	51	82	.010	
36-39	52	66	.040	
39-42	53	72	.310	
42-45	54	61	.010	
45-48	55	50	.050	
48-51	56	41	.110	
51-54	57	42	.020	
54-57	58	54	.020	
57-60	59	58	.010	
60-63	60	56	.020	
63-66	61	55	.020	
66-69	62	52	.010	
69-72	63	185	.080	
72-75	64	195	.150	
75-78	65	190	.220	
78-81	66	180	.040	
81-84	67	170	.070	
84-87	68	190	.030	
87-90	69	195	.080	

PERCUSSION DRILL LOGHole No. P-24Claim: OR-1 Coordinates: 18+04E; 1+05SAzimuth: \_\_\_\_\_ Inclination: 90° Length in Metres: 84Collar Elevation: 3430 feet

Interval (Metres)	Sample Number	Analyses (in ppm)		Description of Cuttings
		Cu	Au	
0-6				casing in overburden
6-9	27970	79	.010	Grey-green, fine grained tuff. Epidote 3%. Pyrite 3-4%. No change to bottom of hole.
9-12	71	175	.005	
12-15	72	122	.005	
15-18	73	92	.010	
18-21	74	146	.005	
21-24	75	120	.005	
24-27	76	200	.020	
27-30	77	32	.005	
30-33	78	120	.010	
33-36	79	225	.030	
36-39	80	168	.020	
39-42	81	240	.020	
42-45	82	300	.030	
45-48	83	162	.005	
48-51	84	180	.010	
51-54	85	240	.040	
54-57	86	240	.010	
57-60	87	315	.050	
60-63	88	152	.030	
63-66	89	138	.030	
66-69	90	98	.020	
69-72	91	82	.010	
72-75	92	134	.005	
75-78	93	132	.010	
78-81	94	152	.005	
81-84	95	122	.010	

## PERCUSSION DRILL LOG

Hole No. P-44Claim: QR-1 Coordinates: 19+40E; 2+10NAzimuth: \_\_\_\_\_ Inclination: 90° Length in Metres: 90Collar Elevation: 3450 feet

Interval (Metres)	Sample Number	Analyses (in ppm)		Description of Cuttings
		Cu	Au	
0-6				casing in overburden
6-9	29480	82	.005	Hornblende-augite basalt. Epidote 3%. Pyrite 2-3%. No change to bottom of hole.
9-12	81	102	.005	
12-15	82	124	.005	
15-18	83	116	.005	
18-21	84	102	.005	
21-24	85	106	.005	
24-27	86	86	.005	
27-30	87	104	.005	
30-33	88	100	.005	
33-36	89	100	.005	
36-39	90	110	.005	
39-42	91	118	.005	
42-45	92	142	.005	
45-48	93	164	.005	
48-51	94	124	.005	
51-54	95	48	.005	
54-57	96	42	.005	
57-60	97	70	.005	
60-63	98	50	.005	
63-66	99	52	.005	
66-69	500	69	.005	
69-72	01	56	.005	
72-75	02	84	.005	
75-78	03	94	.005	
78-81	04	74	.005	
81-84	05	68	.005	
84-87	06	43	.005	
87-90	07	34	.005	

## PERCUSSION DRILL LOG

Hole NO. P-45Claim: QR-1 Coordinates: 19+40E; 1+40NAzimuth: \_\_\_\_\_ Inclination: 90° Length in Metres: 90Collar Elevation: 3500 feet

Interval (Metres)	Sample Number	Analyses (in ppm)		Description of Cuttings
		Cu	Au	
0-6				casing in overburden
6-9	29508	140	.005	Hornblende-augite basalt. Epidote 3%. Pyrite 2-3%. No change to bottom of hole.
9-12	9	110	.005	
12-15	10	108	.005	
15-18	11	112	.005	
18-21	12	112	.005	
21-24	13	126	.005	
24-27	14	138	.005	
27-30	15	130	.005	
30-33	16	128	.020	
33-36	17	112	.005	
36-39	18	130	.005	
39-42	19	104	.005	
42-45	20	76	.005	
45-48	21	132	.005	
48-51	22	164	.040	
51-54	23	152	.030	
54-57	24	148	.005	
57-60	25	122	.020	
60-63	26	112	.400	
63-66	27	140	.005	
66-69	28	92	.005	
69-72	29	120	.020	
72-75	30	148	.010	
75-78	31	124	.060	
78-81	32	120	.010	
81-84	33	108	.010	
84-87	34	118	.005	
87-90	35	164	.020	

## PERCUSSION DRILL LOG

Hole No. P-46

Claim: QR-1                      Coordinates: 19+47E; G+65N  
 Azimuth: \_\_\_\_\_              Inclination: 90°      Length in Metres: 90  
 Collar Elevation: 3475 feet

Interval (Metres)	Sample Number	Analyses (in ppm)		Description of Cuttings
		Cu	Au	
0-6				casing in overburden
6-9	29536	90	.005	Hornblende-augite basalt. Epidote 3%. Pyrite 2-3%. No change to bottom of hole.
9-12	37	52	.005	
12-15	38	70	.005	
15-18	39	74	.005	
18-21	40	132	.005	
21-24	41	200	.005	
24-27	42	114	.005	
27-30	43	142	.005	
30-33	44	128	.005	
33-36	45	72	.010	
36-39	46	70	.005	
39-42	47	124	.030	
42-45	48	84	.040	
45-48	49	59	.020	
48-51	50	38	.060	
51-54	51	74	.030	
54-57	52	39	.010	
57-60	53	19	.005	
60-63	54	18	.005	
63-66	55	28	.010	
66-69	56	36	.010	
69-72	57	62	.005	
72-75	58	21	.005	
75-78	59	70	.650	
78-81	60	96	.250	
81-84	61	174	.240	
84-87	62	92	.040	
87-90	63	33	.030	

## PERCUSSION DRILL LOG

Hole No. P-47Claim: OR-1 Coordinates: 19+46E; 0+07NAzimuth: \_\_\_\_\_ Inclination: 90° Length in Metres: 90Collar Elevation: 3430 feet

Interval (Metres)	Sample Number	Analyses (in ppm)		Description of Cuttings
		Cu	Au	
0-6				casing in overburden
6-9	29564	118	.060	Hornblende-augite basalt. Epidote 6%. Pyrite 5-7%. No change to bottom of hole.
9-12	65	635	.150	
12-15	66	685	.120	
15-18	67	370	.070	
18-21	68	460	.160	
21-24	69	220	.110	
24-27	70	315	.140	
27-30	71	152	.100	
30-33	72	72	.040	
33-36	73	158	.040	
36-39	74	74	.030	
39-42	75	445	.040	
42-45	76	70	.005	
45-48	77	60	.005	
48-51	78	43	.005	
51-54	79	62	.005	
54-57	80	31	.005	
57-60	81	38	.010	
60-63	82	62	.020	
63-66	83	68	.020	
66-69	84	80	.010	
69-72	85	68	.020	
72-75	86	120	.005	
75-78	87	152	.010	
78-81	88	170	.005	
81-84	89	150	.050	
84-87	90	152	.010	
87-90	91	154	.005	

PERCUSSION DRILL LOGHole No. P-48Claim: OR-1 Coordinates: 19+47E; 0+50SAzimuth: \_\_\_\_\_ Inclination: 90° Length in Metres: 90Collar Elevation: 3400 feet

Interval (Metres)	Sample Number	Analyses (in ppm)		Description of Cuttings
		Cu	Au	
0-6				casing in overburden
6-9	29593	58	.005	Hornblende-augite basalt. Epidote 6%. Pyrite 5-7%. No change to bottom of hole.
9-12	94	90	.020	
12-15	95	160	.040	
15-18	96	148	.005	
18-21	97	43	.005	
21-24	98	78	.005	
24-27	99	102	.005	
27-30	600	100	.010	
30-33	01	100	.005	
33-36	02	112	.005	
36-39	03	102	.005	
39-42	04	124	.005	
42-45	05	140	.005	
45-48	06	110	.005	
48-51	07	94	.050	
51-54	08	126	.030	
54-57	09	114	.040	
57-60	10	148	.110	
60-63	11	110	.040	
63-66	12	255	.060	
66-69	13	168	.040	
69-72	14	124	.060	
72-75	15	148	.060	
75-78	16	176	.100	
78-81	17	168	.140	
81-84	18	146	.070	
84-87	19	164	.080	
87-90	20	156	.080	

PERCUSSION DRILL LOGHole No. P-49Claim: OR-1 Coordinates: 19+60E; 1+09SAzimuth: \_\_\_\_\_ Inclination: 90° Length in Metres: 90Collar Elevation: 3375 feet

Interval (Metres)	Sample Number	Analyses (in ppm)		Description of Cuttings
		Cu	Au	
0-6				casing in overburden
6-9	29621	62	.020	Hornblende-augite basalt. Epidote 10%. Pyrite 10%, to 45 metres.
9-12	22	110	.050	
12-15	23	56	.010	
15-18	24	64	2.400	
18-21	25	62	.070	
21-24	26	58	.090	
24-27	27	156	.140	
27-30	28	118	.080	
30-33	29	142	.100	
33-36	30	176	.010	
36-39	31	92	.005	
39-42	32	50	.010	
42-45	33	96	.020	
45-48	34	62	.005	Rock type as above. Epidote 3%. Pyrite 2-3%. No change to bottom of hole.
48-51	35	47	.005	
51-54	36	16	.005	
54-57	37	47	.005	
57-60	38	32	.010	
60-63	39	39	.010	
63-66	40	102	.050	
66-69	41	120	.040	
69-72	42	82	.030	
72-75	43	42	.020	
75-78	44	18	.010	
78-81	45	16	.005	
81-84	46	14	.050	
84-87	47	82	.020	
87-90	48	96	.005	



## PERCUSSION DRILL LOG

Hole No. P-50

Claim: QR-1                      Coordinates: 18+86E; 0+32S  
 Azimuth: \_\_\_\_\_              Inclination: 90°      Length in Metres: 90  
 Collar Elevation: 3425 feet

Interval (Metres)	Sample Number	Analyses (in ppm)		Description of Cuttings
		Cu	Au	
0-6				casing in overburden
6-9	29649	345	.050	Hornblende-augite basalt. Epidote 10%. Pyrite 8-10%, to 30 metres.
9-12	50	160	1.300	
12-15	51	225	.140	
15-18	52	730	.150	
18-21	53	2900	.260	
21-24	54	270	.040	
24-27	55	112	.010	
27-30	56	114	.010	
30-33	57	40	.040	Grey-green, fine grained tuff. Trace epidote, pyrite 3%. To 48 metres.
33-36	58	28	.040	
36-39	59	21	.140	
39-42	60	56	.020	
42-45	61	20	.010	
45-48	62	84	.050	
48-51	63	156	.005	Hornblende-augite basalt. Epidote 8%. Pyrite 7-10%. No change to bottom of hole
51-54	64	200	.010	
54-57	65	300	.020	
57-60	66	142	.020	
60-63	67	182	.010	
63-66	68	210	.005	
66-69	69	235	.005	
69-72	70	215	.010	
72-75	71	255	.005	
75-78	72	330	.005	
78-81	73	160	.040	
81-84	74	76	.010	
84-87	75	64	.005	
87-90	76	82	.010	

## PERCUSSION DRILL LOG

Hole No. P-51Claim: QR-1Coordinates: 18+86E; 0+30N

Azimuth: \_\_\_\_\_

Inclination: 90° Length in Metres: 90Collar Elevation: 3445 feet

Interval (Metres)	Sample Number	Analyses (in ppm)		Description of Cuttings
		Cu	Au	
0-3				casing in overburden
3-6	29677	36	.150	Hornblende-augite basalt. Epidote 5%. Pyrite 6%. No change to bottom of hole.
6-9	78	54	.270	
9-12	79	58	.130	
12-15	80	400	.110	
15-18	81	32	.080	
18-21	82	80	.080	
21-24	83	106	.160	
24-27	84	112	.250	
27-30	85	54	.050	
30-33	86	48	.380	
33-36	87	68	.370	
36-39	88	380	.380	
39-42	89	164	.250	
42-45	90	130	.080	
45-48	91	52	.110	
48-51	92	54	.060	
51-54	93	62	.090	
54-57	94	48	.120	
57-60	95	56	.080	
60-63	96	56	.070	
63-66	97	50	.110	
66-69	98	60	.110	
69-72	99	41	.130	
72-75	700	31	.100	
75-78	01	47	.100	
78-81	02	30	.070	
81-84	03	40	.080	
84-87	04	40	.100	
87-90	05	33	.070	

## PERCUSSION DRILL LOG

Hole No. P-55

Claim: QR-3                      Coordinates: 11+00E; 3+14S  
 Azimuth: \_\_\_\_\_              Inclination: 90°    Length in Metres: 60  
 Collar Elevation: 3405 feet

Interval (Metres)	Sample Number	Analyses (in ppm)		Description of Cuttings
		Cu	Au	
0-3				casing in overburden
3-6	24251	58	.005	Grey-green fine grained tuff. Pyrite 8%. Epidote trace. No change to bottom of hole.
6-9	52	90	.005	
9-12	53	188	.005	
12-15	54	148	.005	
15-18	55	118	.005	
18-21	56	82	.005	
21-24	57	86	.005	
24-27	58	84	.005	
27-30	59	100	.005	
30-33	60	80	.005	
33-36	61	78	.005	
36-39	62	80	.005	
39-42	63	52	.005	
42-45	64	66	.005	
45-48	65	74	.005	
48-51	66	76	.020	
51-54	67	78	.005	
54-57	68	94	.005	
57-60	69	92	.005	

APPENDIX II  
ANALYSES CERTIFICATES

ACME ANALYTICAL LABORATORIES LTD.

Assaying & Trace Analysis

6455 Laurel St., Burnaby, B.C. V5B 3B4

Tel. 299 5242

10

Goldfields Mining Corp.  
808 - 525 Seymour St.  
Vancouver, B. C.  
V6B 3H7

File No. 8711

Type of Samples P, Cuttings

Disposition \_\_\_\_\_

ANALYSES CERTIFICATE

No.	Sample	Cu	Au						No.
01	27601	68	.020					P-10	01
02	27602	70	.020						02
03	27603	61	.005						03
04	27604	85	.005						04
05	27605	84	.040						05
06	27606	62	.005						06
07	27607	80	.005						07
08	27608	63	.020						08
09	27609	54	.005						09
10	27610	64	.005						10
11	27611	53	.060						11
12	27612	72	.005						12
13	27613	78	.005						13
14	27614	80	.005						14
15	27615	90	.010						15
16	27616	92	.010						16
17	27617	96	.005						17
18	27618	82	.005						18
19	27619	70	.080						19
20	27620	68	.010						20
21	27621	70	.020						21
22	27622	58	.005						22
23	27623	70	.005						23
24	27624	72	.005						24
25	27625	92	.005					P-11	25
26	27626	35	.005						26
27	27627	90	.005						27
28	27628	56	.005						28
29	27629	92	.005						29
30	27630	72	.005						30
31	27631	92	.005						31
32	27632	74	.005						32
33	27633	65	.005						33
34	27634	62	.020						34
35	27635	82	.005						35
36	27636	102	.005						36
37	27637	118	.005						37
38	27638	100	.005						38
39									39
40									40

All reports are the confidential property of clients.  
All results are in parts per million.

DATE SAMPLES RECEIVED August 24, 1978  
DATE REPORTS MAILED August 28, 1978  
ANALYST Deane R. [Signature]

ACME ANALYTICAL LABORATORIES LTD.

Assaying & Trace Analysis

6455 Laurel St., Burnaby, B.C. V5B 3B4

Tel 299-5242

TO Goldfields Mining Corp.

File No 8711

Type of Samples P. Cuttings

Disposition

ANALYSES CERTIFICATE

No.	Sample	Cu	Au							No.
01	27639	78	.005							01
02	27640	84	.005							02
03	27641	94	.005							03
04	27642	102	.020							04
05	27643	172	.005							05
06	27644	140	.005							06
07	27645	74	.005							07
08	27646	78	.005							08
09	27647	76	.005							09
10	27648	72	.005							10
11	27649	82	.005							11
12	27650	50	.010							12
13	27651	57	.005							13
14	27652	59	.005							14
15	27653	98	.005							15
16	27654	102	.005			P-12				16
17	27655	92	.005							17
18	27656	72	.005							18
19	27657	51	.010							19
20	27658	68	.005							20
21	27659	62	.005							21
22	27660	108	.005							22
23	27661	192	.020							23
24	27662	63	.005							24
25	27663	56	.010							25
26	27664	29	.010							26
27	27665	38	.005							27
28	27666	8	.005							28
29	27667	12	.005							29
30	27668	8	.005							30
31	27669	6	.005							31
32	27670	6	.040							32
33	27671	5	.005							33
34	27672	8	.005							34
35	27673	10	.010							35
36	27674	10	.020							36
37	27675	14	.005							37
38	27676	15	.010							38
39										39
40										40

All reports are the confidential property of clients. All results are in parts per million.

DATE SAMPLES RECEIVED August 24, 1978  
DATE REPORTS MAILED August 28, 1978  
ANALYST *[Signature]*

ACME ANALYTICAL LABORATORIES LTD.

Assaying & Trace Analysis

6455 Laurel St., Burnaby, B.C. V5B 3B4

Tel 299-5242

10

Goldfields Mining Corp.

File No. 8711

ANALYSES CERTIFICATE

Type of Samples P. Cuttings

Disposition \_\_\_\_\_

3

No.	Sample	Cu	Au							No.
01	27677	11	.005							01
02	27678	10	.005							02
03	27679	10	.005							03
04										04
05										05
06										06
07										07
08										08
09										09
10										10
11										11
12										12
13										13
14										14
15										15
16										16
17										17
18										18
19										19
20										20
21										21
22										22
23										23
24										24
25										25
26										26
27										27
28										28
29										29
30										30
31										31
32										32
33										33
34										34
35										35
36										36
37										37
38										38
39										39
40										40

All reports are the confidential property of clients.  
All results are in parts per million.

DATE SAMPLES RECEIVED August 24, 1978  
DATE REPORTS MAILED August 29, 1978  
ANALYST [Signature]

**ACME ANALYTICAL LABORATORIES LTD.**

TO  
Goldfields Mining Corp.  
808 - 525 Seymour St.  
Vancouver, B. C.  
V6B 3K7

Assaying & Trace Analysis  
6455 Laurel St., Burnaby, B.C. V5B 3B4

Tel 299-5242

File No. 8757  
Type of Samples P. Cuttings  
Disposition \_\_\_\_\_

**ANALYSES CERTIFICATE**

No.	Sample	Cu	Au					No.
01	27680	90	.005			P-13 A		01
02	27681	82	.005					02
03	27682	120	.005					03
04	27683	80	.005					04
05	27684	86	.005					05
06	27685	59	.010					06
07	27686	82	.005					07
08	27687	60	.005					08
09	27688	56	.005					09
10	27689	68	.005					10
11	27690	70	.005					11
12	27691	66	.005					12
13	27692	72	.005					13
14	27693	72	.005					14
15	27694	74	.005					15
16	27695	72	.005					16
17	27696	112	.005			P-13 B		17
18	27697	94	.005					18
19	27698	106	.005					19
20	27699	84	.005					20
21	27700	78	.005					21
22	27701	96	.010					22
23	27702	98	.005					23
24	27703	92	.005					24
25	27704	72	.020					25
26	27705	58	.010					26
27	27706	52	.005					27
28	27707	58	.005					28
29	27708	80	.005					29
30	27709	64	.005					30
31	27710	63	.005					31
32	27711	68	.005					32
33	27712	70	.005					33
34	27713	68	.005					34
35	27714	90	.005					35
36	27715	67	.005					36
37	27716	70	.005					37
38	27717	50	.005					38
39								39
40								40

All reports are the confidential property of clients.  
All results are in parts per million.

DATE SAMPLES RECEIVED August 30, 1978  
DATE REPORTS MAILED Sept. 2, 1978  
ANALYST Red. S. Dye



**ACME ANALYTICAL LABORATORIES LTD.**

Assaying & Trace Analysis

6455 Laurel St., Burnaby, B.C. V5B 3B4

Tel 299 5242

10

Goldfields Mining Corp.  
808 - 525 Seymour St.  
Vancouver, B. C.  
V6B 3H7

File No 8757

Type of Samples P. Cuttings

Disposition \_\_\_\_\_

**ANALYSES CERTIFICATE**

2

No.	Sample	Cu	Au							No.
01	27718	52	.005							01
02	27719	72	.010							02
03	27720	60	.005							03
04	27721	70	.005							04
05	27722	76	.005							05
06	27723	43	.005							06
07	27724	20	.005							07
08	27725	38	.005			P-14				08
09	27726	64	.005							09
10	27727	90	.005							10
11	27728	51	.005							11
12	27729	50	.005							12
13	27730	53	.005							13
14	27731	38	.005							14
15	27732	34	.005							15
16	27733	38	.005							16
17	27734	42	.005							17
18	27735	51	.005							18
19	27736	70	.005							19
20	27737	72	.005							20
21	27738	68	.010							21
22	27739	70	.005							22
23	27740	78	.005							23
24	27741	76	.005							24
25	27742	74	.005							25
26	27743	72	.005							26
27	27744	74	.005							27
28	27745	82	.010							28
29	27746	80	.005							29
30	27747	Missing								30
31	27748	84	.005							31
32	27749	86	.005							32
33	27750	84	.005							33
34	27751	92	.005							34
35	27752	96	.005							35
36	27753	92	.005							36
37	27754	72	.005			P-15				37
38	27755	49	.005							38
39										39
40										40

All reports are the confidential property of clients.  
All results are in parts per million.

DATE SAMPLES RECEIVED August 30, 1978  
DATE REPORTS MAILED Sept. 2, 1978  
ANALYST [Signature]

ACME ANALYTICAL LABORATORIES LTD.

Assaying & Trace Analysis

6455 Laurel St., Burnaby, B.C. V5B 3B4

Te: 299-5242

TO

Goldfields Mining Corp.

File No. 8757

Type of Samples P. Cuttings

Disposition \_\_\_\_\_

ANALYSES CERTIFICATE

3

No.	Sample	Cu	Au						No.
01	27756	52	.005						01
02	27757	58	.005						02
03	27758	62	.005						03
04	27759	56	.005						04
05	27760	47	.005						05
06	27761	30	.005						06
07	27762	46	.005						07
08	27763	63	.005						08
09	27764	58	.005						09
10	27765	60	.005						10
11	27766	46	.005						11
12	27767	50	.005						12
13	27768	59	.005						13
14	27769	72	.005						14
15	27770	70	.005						15
16	27771	86	.005						16
17	27772	74	.005						17
18	27773	64	.005						18
19	27774	78	.005						19
20	27775	88	.005						20
21	27776	102	.005						21
22	27777	94	.020						22
23	27778	98	.005						23
24	27779	104	.005						24
25	27780	106	.010						25
26	27781	122	.010						26
27	27782	130	.020						27
28	27783	52	.005			P-16			28
29	27784	43	.005						29
30	27785	54	.005						30
31	27786	60	.005						31
32	27787	40	.010						32
33	27788	48	.010						33
34	27789	61	.010						34
35	27790	60	.005						35
36	27791	54	.020						36
37	27792	50	.005						37
38	27793	45	.005						38
39									39
40									40

All reports are the confidential property of clients  
All results are in parts per million.

DATE SAMPLES RECEIVED August 30, 1978  
DATE REPORTS MAILED Sept 12, 1978  
ANALYST [Signature]

ACME ANALYTICAL LABORATORIES LTD.

Assaying & Trace Analysis

6455 Laurel St., Burnaby, B.C. V5B 3B4

Tel. 299-5242

TO

Goldfields Mining Corp.

File No. 8757

Type of Samples P. Cuttings

Disposition \_\_\_\_\_

ANALYSES CERTIFICATE

4

No.	Sample	Cu	Au						No.
01	27794	51	.010						01
02	27795	48	.030						02
03	27796	49	.010						03
04	27797	48	.005						04
05	27798	61	.005						05
06	27799	68	.005						06
07	27800	69	.005						07
08	27801	54	.005						08
09	27802	53	.010						09
10	27803	46	.005						10
11	27804	48	.005						11
12	27805	48	.005						12
13	27806	46	.005						13
14	27807	48	.005						14
15	27808	44	.005						15
16	27809	43	.020						16
17									17
18									18
19									19
20									20
21									21
22									22
23									23
24									24
25									25
26									26
27									27
28									28
29									29
30									30
31									31
32									32
33									33
34									34
35									35
36									36
37									37
38									38
39									39
40									40

All reports are the confidential property of clients  
All results are in parts per million.

DATE SAMPLES RECEIVED August 30, 1978  
DATE REPORTS MAILED Sept 7, 1978  
ANALYST [Signature]

10 Goldfields Mining Corp.,  
808 - 525 Seymour St.,  
Vancouver, B. C. V6B 3H7

**ACME ANALYTICAL LABORATORIES LTD.**

Assaying & Trace Analysis  
6455 Laurel St., Burnaby, B.C. V5B 3B4

Tel. 299-5242

File No. 8805  
Type of Samples P. Cuttings  
Disposition \_\_\_\_\_

**ANALYSES CERTIFICATE**

No.	Sample	Cu	Au				P-17			No.
01	27810	80	.005							01
02	27811	72	.005							02
03	27812	70	.005							03
04	27813	76	.005							04
05	27814	78	.005							05
06	27815	55	.005							06
07	27816	74	.005							07
08	27817	68	.005							08
09	27818	80	.005							09
10	27819	84	.005							10
11	27820	64	.005							11
12	27821	78	.005							12
13	27822	118	.005							13
14	27823	82	.005							14
15	27824	110	.005							15
16	27825	52	.005							16
17	27826	13	.005							17
18	27827	20	.005							18
19	27828	19	.005							19
20	27829	12	.005							20
21	27830	17	.005							21
22	27831	52	.005							22
23	27832	62	.005							23
24	27833	52	.005							24
25	27834	110	.005							25
26	27835	84	.005							26
27	27836	110	.005							27
28	27837	110	.010							28
29	27838	120	.005							29
30	27839	52	.005				P-18			30
31	27840	39	.005							31
32	27841	43	.005							32
33	27842	44	.005							33
34	27843	58	.005							34
35	27844	40	.005							35
36	27845	42	.005							36
37	27846	31	.005							37
38	27847	45	.005							38
39	27848	31	.005							39
40										40

All reports are the confidential property of clients.  
All results are in parts per million.

DATE SAMPLES RECEIVED Sept. 8, 1978  
DATE REPORTS MAILED Sept. 12, 1978  
ANALYST W. J. [Signature]

to Goldfields Mining Corp.

ACME ANALYTICAL LABORATORIES LTD.

Assaying & Trace Analysis  
6455 Laurel St., Burnaby, B.C. V5B 3B4

Tel. 299-5242

8805

File No. ....

Type of Samples P. Cuttings

Disposition \_\_\_\_\_

ANALYSES CERTIFICATE

No.	Sample	Cu	Au	No.
01	27849	50	.005	01
02	27850	42	.010	02
03	27851	52	.005	03
04	27852	50	.010	04
05	27853	62	.005	05
06	27854	70	.005	06
07	27855	52	.010	07
08	27856	48	.020	08
09	27857	47	.005	09
10	27858	43	.020	10
11	27859	52	.005	11
12	27860	54	.005	12
13	27861	62	.010	13
14	27862	64	.010	14
15	27863	68	.005	15
16	27864	68	.005	16
17	27865	62	.005	17
18	27866	68	.005	18
19	27867	68	.005	19
20	27868	47	.005	20
21	27869	56	.005	21
22	27870	62	.010	22
23	27871	52	.005	23
24	27872	42	.005	24
25	27873	40	.005	25
26	27874	44	.005	26
27	27875	40	.005	27
28	27876	40	.005	28
29	27877	48	.005	29
30	27878	50	.005	30
31	27879	58	.005	31
32	27880	62	.005	32
33	27881	46	.005	33
34	27882	42	.005	34
35	27883	48	.005	35
36	27884	42	.005	36
37	27885	42	.005	37
38	27886	43	.005	38
39				39
40				40

All reports are the confidential property of clients  
 All results are in parts per million.

DATE SAMPLES RECEIVED Sept. 8, 1978  
 DATE REPORTS MAILED Sept. 12, 1978  
 ANALYST Deane [Signature]

## ACME ANALYTICAL LABORATORIES LTD.

TO Goldfields Mining Corp.

Assaying & Trace Analysis  
6455 Laurel St., Burnaby, B.C. V5B 3B4

Tel: 299-5242

File No. 8805Type of Samples P. Cuttings

Disposition \_\_\_\_\_

## ANALYSES CERTIFICATE

No.	Sample	Cu	Au						No.
01	27887	82	.005			P-20			01
02	27888	92	.005						02
03	27889	90	.005						03
04	27890	92	.005						04
05	27891	74	.005						05
06	27892	34	.005						06
07	27893	24	.005						07
08	27894	38	.005						08
09	27895	76	.005						09
10	27896	38	.005						10
11	27897	37	.005						11
12	27898	31	.005						12
13	27899	26	.005						13
14	27900	68	.005			P-21			14
15	27901	60	.005						15
16	27902	62	.005						16
17	27903	80	.005						17
18	27904	82	.005						18
19	27905	92	.005						19
20	27906	96	.080						20
21	27907	80	.005						21
22	27908	112	.020						22
23	27909	215	.005						23
24	27910	86	.005						24
25	27911	146	.005						25
26	27912	122	.005						26
27	27913	76	.010						27
28	27914	66	.010						28
29	27915	80	.005						29
30	27916	62	.005						30
31	27917	76	.005						31
32	27918	42	.010						32
33	27919	52	.005						33
34	27920	62	.030						34
35	27921	70	.140						35
36	27922	100	.005						36
37	27923	108	.005						37
38	27924	62	.005						38
39									39
40									40

All reports are the confidential property of clients  
All results are in parts per million.

DATE SAMPLES RECEIVED Sept. 9, 1978  
DATE REPORTS MAILED Sept. 17, 1978  
ANALYST Ross

TO Goldfields Mining Corp.

ACME ANALYTICAL LABORATORIES LTD.

Assaying & Trace Analysis  
6455 Laurel St., Burnaby, B.C. V5B 3B4

Tel 299-5242

File No. 8805

Type of Samples P. Cuttings

Disposition \_\_\_\_\_

ANALYSES CERTIFICATE

No.	Sample	Cu	Au							No.
01	27925	94	.010							01
02	27926	74	.010							02
03	27927	70	.020							03
04	27928	74	.010							04
05	27929	32	.020			P 22				05
06	27930	38	.005							06
07	27931	33	.005							07
08	27932	32	.005							08
09	27933	24	.005							09
10	27934	29	.005							10
11	27935	50	.005							11
12	27936	112	.005							12
13	27937	70	.020							13
14	27938	76	.005							14
15	27939	98	.005							15
16	27940	106	.005							16
17	27941	104	.005							17
18										18
19										19
20										20
21										21
22										22
23										23
24										24
25										25
26										26
27										27
28										28
29										29
30										30
31										31
32										32
33										33
34										34
35										35
36										36
37										37
38										38
39										39
40										40

All reports are the confidential property of clients  
All results are in parts per million.

DATE SAMPLES RECEIVED Sept. 8, 1978  
DATE REPORTS MAILED Sept. 12, 1978  
ANALYST Rowe - [Signature]

**ACME ANALYTICAL LABORATORIES LTD.**

10 Goldfields Mining Corp.

Assaying & Trace Analysis  
6455 Laurel St., Burnaby, B.C. V5B 3B4

Tel: 299-5242

File No 8854

**ANALYSES CERTIFICATE**

Type of Samples P., Cuttings

Disposition \_\_\_\_\_

No.	Sample	Cu	Au						No.
01	27942	76	.010			P-23			01
02	27943	52	.005						02
03	27944	102	.005						03
04	27945	72	.005						04
05	27946	176	.005						05
06	27947	132	.005						06
07	27948	65	.005						07
08	27949	280	.930						08
09	27950	270	.110						09
10	27951	82	.010						10
11	27952	66	.040						11
12	27953	72	.310						12
13	27954	61	.010						13
14	27955	50	.050						14
15	27956	41	.110						15
16	27957	42	.020						16
17	27958	54	.020						17
18	27959	58	.010						18
19	27960	56	.020						19
20	27961	55	.020						20
21	27962	52	.010						21
22	27963	185	.080						22
23	27964	195	.150						23
24	27965	190	.220						24
25	27966	180	.040						25
26	27967	170	.070						26
27	27968	190	.030						27
28	27969	195	.080						28
29	27970	79	.010			P-24			29
30	27971	175	.005						30
31	27972	122	.005						31
32	27973	92	.010						32
33	27974	146	.005						33
34	27975	120	.005						34
35	27976	200	.020						35
36	27977	32	.005						36
37	27978	120	.010						37
38	27979	225	.030						38
39									39
40									40

All reports are the confidential property of clients.  
All results are in parts per million.

DATE SAMPLES RECEIVED Sept. 21, 1978  
DATE REPORTS MAILED Sept. 28, 1978  
ANALYST [Signature]



to Goldfields Mining Corp.

**ACME ANALYTICAL LABORATORIES LTD.**

Assaying &amp; Trace Analysis

6455 Laurel St., Burnaby, B.C. V5B 3B4

Tel. 299-5242

File No. 8054Type of Samples P. Cuttings

Disposition \_\_\_\_\_

**ANALYSES CERTIFICATE**

No.	Sample	Cu	Au							No.
3 01	27980	168	.020							01
02	27981	240	.020							02
03	27982	300	.030							03
04	27983	162	.005							04
05	27984	180	.010							05
06	27985	240	.040							06
07	27986	240	.010							07
08	27987	315	.050							08
09	27988	152	.030							09
10	27989	138	.030							10
11	27990	98	.020							11
12	27991	82	.010							12
13	27992	134	.005							13
14	27993	132	.010							14
15	27994	152	.005							15
16	27995	122	.010							16
17										17
18										18
19										19
20										20
21										21
22										22
23										23
24										24
25										25
26										26
27										27
28										28
29										29
30										30
31										31
32										32
33										33
34										34
35										35
36										36
37										37
38										38
39										39
40										40

All reports are the confidential property of clients.

All results are in parts per million.

DATE SAMPLES RECEIVED Sept. 21, 1978DATE REPORTS MAILED Sept. 28, 1978ANALYST M. K. King

to Goldfields Mining Corp.

### ACME ANALYTICAL LABORATORIES LTD.

Assaying & Trace Analysis  
6455 Laurel St., Burnaby, B.C. V5B 3B4

Tel: 299-5242

File No. 8859

## ANALYSES CERTIFICATE

Type of Samples P. Cuttings

Disposition: \_\_\_\_\_

No.	Sample	Cu	Au							No.
01										01
02										02
03										03
04										04
05										05
06										06
07										07
08	29480	82	.005			P-44				08
09	29481	102	.005							09
10	29482	124	.005							10
11	29483	116	.005							11
12	29484	102	.005							12
13	29485	106	.005							13
14	29486	86	.005							14
15	29487	104	.005							15
16	29488	100	.005							16
17	29489	100	.005							17
18	29490	110	.005							18
19	29491	118	.005							19
20	29492	142	.005							20
21	29493	164	.005							21
22	29494	124	.005							22
23	29495	48	.005							23
24	29496	42	.005							24
25	29497	70	.005							25
26	29498	50	.005							26
27	29499	52	.005							27
28	29500	69	.005							28
29	29501	56	.005							29
30	29502	84	.005							30
31	29503	94	.005							31
32	29504	74	.005							32
33	29505	68	.005							33
34	29506	43	.005							34
35	29507	34	.005							35
36										36
37										37
38										38
39										39
40										40

All reports are the confidential property of clients  
All results are in parts per million.

DATE SAMPLES RECEIVED Sept. 25, 1978  
DATE REPORTS MAILED Oct. 3, 1978  
ANALYST *Donna Jupp*

ACME ANALYTICAL LABORATORIES LTD.

10 Goldfields Mining Corp.,  
808 - 525 Seymour St.,  
Vancouver, B. C. V6B 3H7

Assaying & Trace Analysis  
6455 Laurel St., Burnaby, B.C. V5B 3B4

Tel 299-5242

File No 8872

ANALYSES CERTIFICATE

Type of Samples P. Cuttings

Disposition \_\_\_\_\_

No.	Sample	Cu	Au						No.
01	29508	140	.005				P-43		01
02	29509	110	.005						02
03	29510	108	.005						03
04	29511	112	.005						04
05	29512	112	.005						05
06	29513	126	.005						06
07	29514	138	.005						07
08	29515	130	.005						08
09	29516	128	.020						09
10	29517	112	.005						10
11	29518	130	.005						11
12	29519	104	.005						12
13	29520	76	.005						13
14	29521	132	.005						14
15	29522	164	.040						15
16	29523	152	.030						16
17	29524	148	.005						17
18	29525	122	.020						18
19	29526	112	.400						19
20	29527	140	.005						20
21	29528	92	.005						21
22	29529	120	.020						22
23	29530	148	.010						23
24	29531	124	.060						24
25	29532	120	.010						25
26	29533	108	.010						26
27	29534	118	.005						27
28	29535	164	.020						28
29	29536	90	.005				P46		29
30	29537	52	.005						30
31	29538	70	.005						31
32	29539	74	.005						32
33	29540	132	.005						33
34	29541	200	.005						34
35	29542	114	.005						35
36	29543	142	.005						36
37	29544	128	.005						37
38	29545	72	.010						38
39									39
40									40

All reports are the confidential property of clients.  
All results are in parts per million.

DATE SAMPLES RECEIVED Sept. 26, 1978  
DATE REPORTS MAILED Oct. 3/78  
ANALYST Norma Duff

## ACME ANALYTICAL LABORATORIES LTD.

10 Goldfields Mining Corp.

Assaying & Trace Analysis  
6455 Laurel St., Burnaby, B.C. V5B 3B4

Tel 299 5242

File No 8872Type of Samples P. Cuttings

Disposition \_\_\_\_\_

## ANALYSES CERTIFICATE

No.	Sample	Cu	Au	No.
01	29546	70	.005	01
02	29547	124	.030	02
03	29548	84	.040	03
04	29549	59	.020	04
05	29550	38	.060	05
06	29551	74	.030	06
07	29552	39	.010	07
08	29553	19	.005	08
09	29554	18	.005	09
10	29555	28	.010	10
11	29556	36	.010	11
12	29557	62	.005	12
13	29558	21	.005	13
14	29559	70	.650	14
15	29560	96	.250	15
16	29561	174	.240	16
17	29562	92	.040	17
18	29563	33	.030	18
19	29564	118	.060	19
20	29565	635	.150	20
21	29566	685	.120	21
22	29567	370	.070	22
23	29568	460	.160	23
24	29569	220	.110	24
25	29570	315	.140	25
26	29571	152	.100	26
27	29572	72	.040	27
28	29573	158	.040	28
29	29574	74	.030	29
30	29575	445	.040	30
31	29576	70	.005	31
32	29577	60	.005	32
33	29578	43	.005	33
34	29579	62	.005	34
35	29580	31	.005	35
36	29581	38	.010	36
37	29582	62	.020	37
38	29583	68	.020	38
39				39
40				40

All reports are the confidential property of clients.  
All results are in parts per million.

DATE SAMPLES RECEIVED Sept. 26, 1978DATE REPORTS MAILED Oct. 3, 1978ANALYST Bevan J. J.

ACME ANALYTICAL LABORATORIES LTD.

To Goldfields Mining Corp.,

Assaying & Trace Analysis  
6455 Laurel St., Burnaby, B.C. V5B 3B4

Tel: 299-5242

File No. 8872

ANALYSES CERTIFICATE

Type of Samples P. Cuttings

Disposition \_\_\_\_\_

No	Sample	Cu	Au								No.
01	29584	80	.010								01
02	29585	68	.020								02
03	29586	120	.005								03
04	29587	152	.010								04
05	29588	170	.005								05
06	29589	150	.050								06
07	29590	152	.010								07
08	29591	154	.005								08
09											09
10											10
11											11
12											12
13											13
14											14
15											15
16											16
17											17
18											18
19											19
20											20
21											21
22											22
23											23
24											24
25											25
26											26
27											27
28											28
29											29
30											30
31											31
32											32
33											33
34											34
35											35
36											36
37											37
38											38
39											39
40											40

All reports are the confidential property of clients.  
All results are in parts per million.

DATE SAMPLES RECEIVED Sept. 26, 1978  
DATE REPORTS MADE Oct. 3, 1978  
ANALYST ICAN - DJP

## ACME ANALYTICAL LABORATORIES LTD.

Assaying &amp; Trace Analysis

6455 Laurel St., Burnaby, B.C. V5B 3B4

Tel: 299 5242

10

Goldfields Mining Corp.  
808 - 525 Seymour St.  
Vancouver, B. C.  
V6B 3H7

## ANALYSES CERTIFICATE

File No. 8887  
Type of Samples P. Cuttings  
Disposition \_\_\_\_\_

No.	Sample	Cu	Au						No.
01	29593	58	.005			P-48			01
02	29594	90	.020						02
03	29595	160	.040						03
04	29596	148	.005						04
05	29597	43	.005						05
06	29598	78	.005						06
07	29599	102	.005						07
08	29600	100	.010						08
09	29601	100	.005						09
10	29602	112	.005						10
11	29603	102	.005						11
12	29604	124	.005						12
13	29605	140	.005						13
14	29606	110	.005						14
15	29607	94	.050						15
16	29608	126	.030						16
17	29609	114	.040						17
18	29610	148	.110						18
19	29611	110	.040						19
20	29612	255	.060						20
21	29613	168	.040						21
22	29614	124	.060						22
23	29615	148	.060						23
24	29616	176	.100						24
25	29617	168	.140						25
26	29618	146	.070						26
27	29619	164	.080						27
28	29620	156	.080						28
29	29621	62	.020			P-49			29
30	29622	110	.050						30
31	29623	56	.010						31
32	29624	64	2.400						32
33	29625	62	.070						33
34	29626	58	.090						34
35	29627	156	.140						35
36	29628	118	.080						36
37	29629	142	.100						37
38	29630	176	.010						38
39									39
40									40

All reports are the confidential property of clients.  
All results are in parts per million.

DATE SAMPLES RECEIVED Oct. 3, 1978  
DATE REPORTS MAILED Oct. 7, 1978  
ANALYST [Signature]

## ACME ANALYTICAL LABORATORIES LTD.

Assaying &amp; Trace Analysis

6455 Laurel St., Burnaby, B.C. V5B 3B4

Tel. 299-5242

TO

Goldfields Mining Corp.

8887

File No.

P. Cuttings

Type of Samples

Disposition

## ANALYSES CERTIFICATE

No.	Sample	Cu	Au							No.
01	29631	92	.005							01
02	29632	50	.010							02
03	29633	96	.020							03
04	29634	62	.005							04
05	29635	47	.005							05
06	29636	16	.005							06
07	29637	47	.005							07
08	29638	32	.010							08
09	29639	39	.010							09
10	29640	102	.050							10
11	29641	120	.040							11
12	29642	82	.030							12
13	29643	42	.020							13
14	29644	18	.010							14
15	29645	16	.005							15
16	29646	14	.050							16
17	29647	82	.020							17
18	29648	96	.005							18
19	29649	345	.050			P 50				19
20	29650	160	1.300							20
21	29651	225	.140							21
22	29652	730	.150							22
23	29653	2900	.260							23
24	29654	270	.040							24
25	29655	112	.010							25
26	29656	114	.010							26
27	29657	40	.040							27
28	29658	28	.040							28
29	29659	21	.140							29
30	29660	56	.020							30
31	29661	20	.010							31
32	29662	84	.050							32
33	29663	156	.005							33
34	29664	200	.010							34
35	29665	300	.020							35
36	29666	142	.020							36
37	29667	182	.010							37
38	29668	210	.005							38
39										39
40										40

All reports are the confidential property of clients  
 All results are in parts per million.

DATE SAMPLES RECEIVED Oct. 3, 1978  
 DATE REPORTS MAILED Oct. 7, 1978  
 ANALYST Don Ely

## ACME ANALYTICAL LABORATORIES LTD.

Assaying &amp; Trace Analysis

6455 Laurel St., Burnaby, B.C. V5B 3B4

Tel: 299 5242

TO

Goldfields Mining Corp.

File No. 8887Type of Samples P. Cuttings

Disposition \_\_\_\_\_

## ANALYSES CERTIFICATE

No	Sample	Cu	Au							No
01	29669	235	.005							01
02	29670	215	.010							02
03	29671	255	.005							03
04	29672	330	.005							04
05	29673	160	.040							05
06	29674	76	.010							06
07	29675	64	.005							07
08	29676	82	.010							08
09	29677	36	.150			P-51				09
10	29678	54	.270							10
11	29679	58	.130							11
12	29680	400	.110							12
13	29681	32	.080							13
14	29682	80	.080							14
15	29683	106	.160							15
16	29684	112	.250							16
17	29685	54	.050							17
18	29686	48	.380							18
19	29687	68	.370							19
20	29688	380	.380							20
21	29689	164	.250							21
22	29690	130	.080							22
23	29691	52	.110							23
24	29692	54	.060							24
25	29693	62	.090							25
26	29694	48	.120							26
27	29695	56	.080							27
28	29696	56	.070							28
29	29697	50	.110							29
30	29698	60	.110							30
31	29699	41	.130							31
32	29700	31	.100							32
33	29701	47	.100							33
34	29702	30	.070							34
35	29703	40	.080							35
36	29704	40	.100							36
37	29705	33	.070							37
38										38
39										39
40										40

All reports are the confidential property of clients.  
All results are in parts per million.

DATE SAMPLES RECEIVED Oct. 3, 1978  
DATE REPORTS MAILED Oct. 7, 1978  
ANALYST W. J. [Signature]



## ACME ANALYTICAL LABORATORIES LTD.

10 Goldfields Mining Corp.,  
808 - 525 Seymour St.,  
Vancouver, B. C. V6B 3H7

Assaying & Trace Analysis  
6455 Laurel St., Burnaby, B.C. V5B 3B4

Tel. 299 5242

8892

File No. \_\_\_\_\_

Type of Samples P. Cuttings

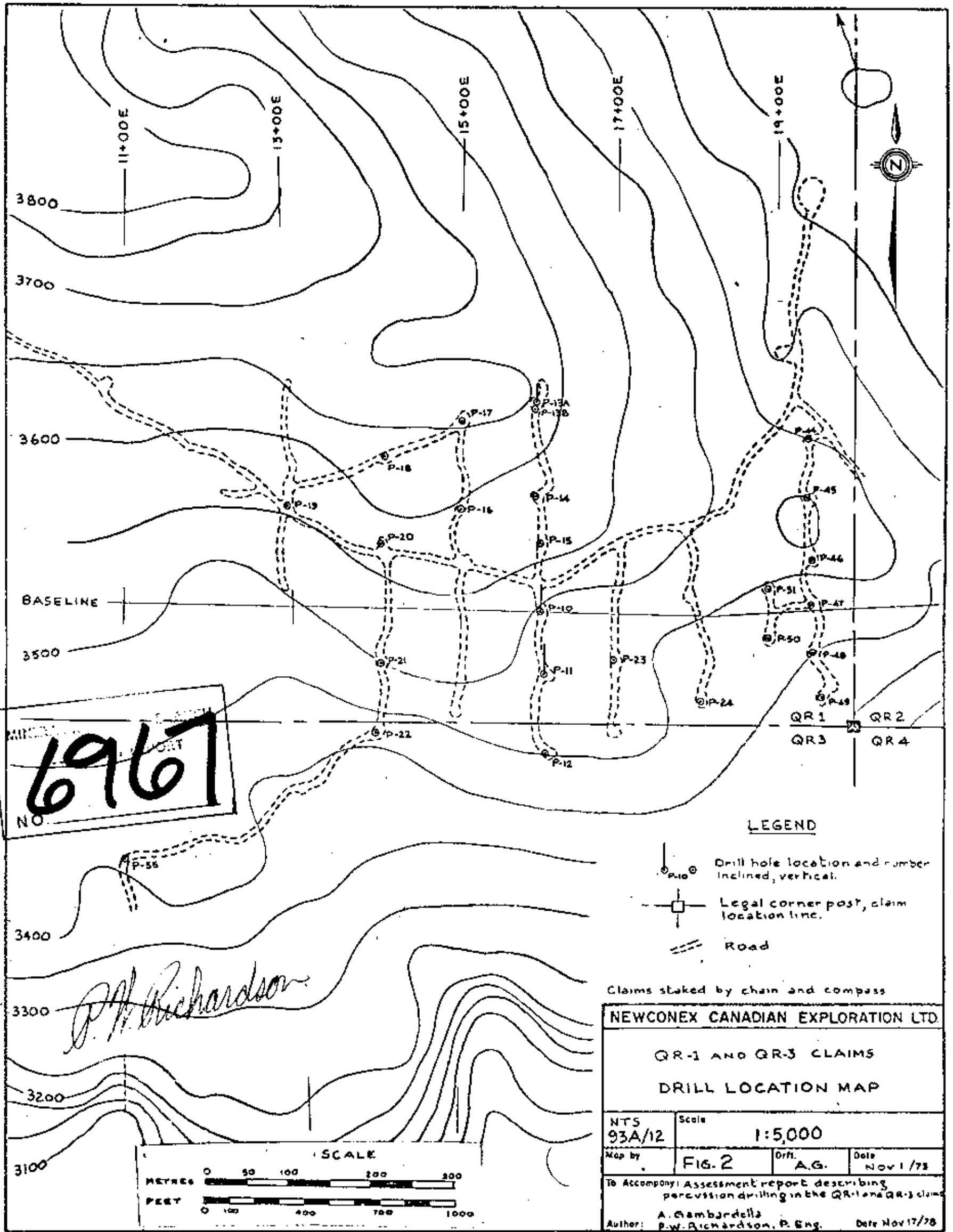
Disposition \_\_\_\_\_

## ANALYSES CERTIFICATE

No.	Sample	Cu	Au							No.
01	24251	58	.005				P. 55			01
02	24252	90	.005							02
03	24253	188	.005							03
04	24254	148	.005							04
05	24255	118	.005							05
06	24256	82	.005							06
07	24257	86	.005							07
08	24258	84	.005							08
09	24259	100	.005							09
10	24260	80	.005							10
11	24261	78	.005							11
12	24262	80	.005							12
13	24263	52	.005							13
14	24264	66	.005							14
15	24265	74	.005							15
16	24266	76	.020							16
17	24267	78	.005							17
18	24268	94	.005							18
19	24269	92	.005							19
20										20
21										21
22										22
23										23
24										24
25										25
26										26
27										27
28										28
29										29
30										30
31										31
32										32
33										33
34										34
35										35
36										36
37										37
38										38
39										39
40										40

All reports are the confidential property of clients.  
All results are in parts per million.

DATE SAMPLES RECEIVED Oct. 5, 1978  
DATE REPORTS MAILED Oct. 10, 1978  
ANALYST W. M. [Signature]



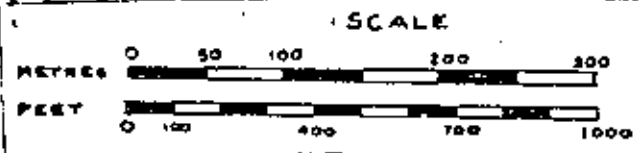
NO. **6967**

**LEGEND**

- Drill hole location and number  
Inclined, vertical.
- Legal corner post, claim  
location line.
- Road

Claims staked by chain and compass

NEWCONEX CANADIAN EXPLORATION LTD.			
QR-1 AND QR-3 CLAIMS			
DRILL LOCATION MAP			
NTS 93A/12	Scale 1:5,000		
Map by A.G.	Drft. A.G.	Date NOV 1/78	
To Accompany Assessment report describing percussion drilling in the QR-1 and QR-3 claims			
Author: A. Gambardella P.W. Richardson, P. Eng.		Date Nov 17/78	



*P.W. Richardson*