

GEOLOGICAL REPORT

G. L. MINERAL CLAIM

RECORD No. 552

RUTHERFORD CREEK AREA
LILLOOET M.D.

92 J 6/E

OWNER - RAINBOW SYNDICATE

OPERATOR - JOHN MCGORAN

by

JOHN MCGORAN, B.Sc.,

October 1978

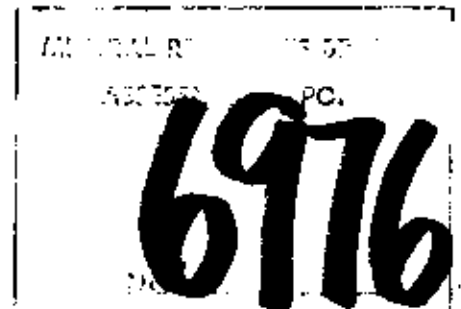


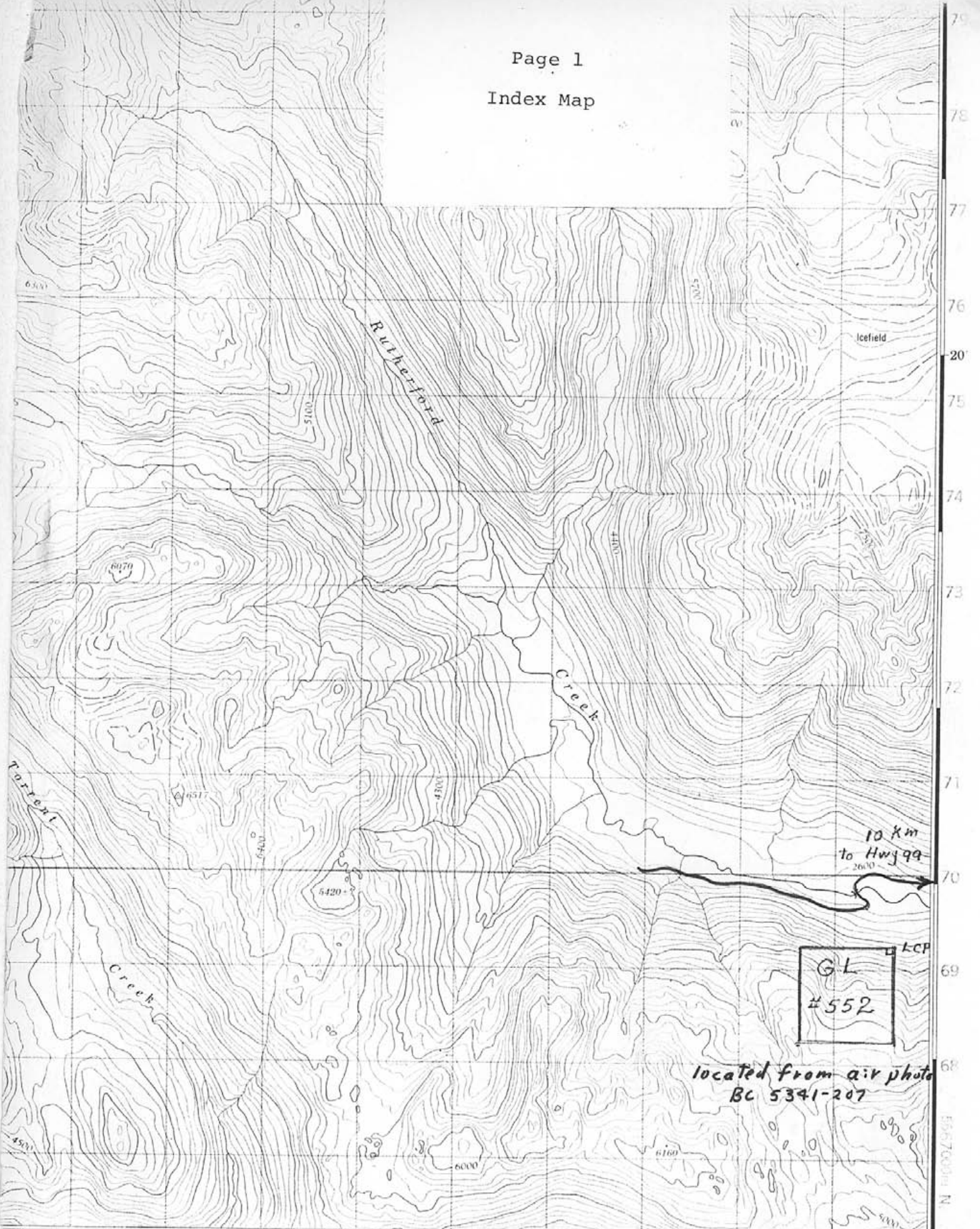
TABLE OF CONTENTS

	Page
LOCATION.....	2
ACCESS.....	2
CONTROL.....	2
GENERAL GEOLOGY.....	3
DETAILED GEOLOGY.....	3
QUALIFICATIONS.....	5
REFERENCES.....	6
EXPENDITURES.....	7

MAPS

	Scale	
INDEX MAP	1:50,000	Page 1
GRID MAP	1:5,000)	In folder
GEOLOGY MAP	1:5,000)) at
		back

Page 1
Index Map



91 92 93 05' 95 97 98 499000m. E. 123°00'

Scale 1:50,000

92J 6 E

79
78
77
76
20'
75
74
73
72
71
70
69
68
50 15'

located from air photo
BC 5341-207

LOCATION

The G.L. Mineral Claim of four units is situated ten km. west of the Highway 99 bridge which crosses Rutherford Creek. The north boundary of the G.L. Claim is 1 km. south of a logging bridge which crosses Rutherford Creek. A logging road is currently being built to pass within 25 meters of G.L. legal corner post.

ACCESS

A logging road follows Rutherford Creek from Highway 99 to the G.L. Claim. Access on this road is available at night and weekends when logging trucks are not on this road. Helicopter access is available to the alpine areas of south G.L. Claim from the helicopter hangar at Whistler, 20 km. to the south.

CONTROL

A north-south base line traverses the G.L. Claim from 75 meters east of G.L. post E1. This is a cut line with 25 meter stations established with slope corrections. At each 100-meter station, E-W lines were run at a constant elevation using thread chain and aneroid barometers. Twenty-five meter intervals were marked with flagging.

GENERAL GEOLOGY

Woodsworth¹ states that the rocks in the roof pendant which underly the G.L. Claim are Early Cretaceous volcanoclastic rocks which have undergone greenschist grade metamorphism.

Both regional schistosity and stratigraphy trend north-west. Two 200° faults have noticeable displacements.

10 km. to the south, the top in a turbidite is to the north-east, this is the same attitude found by Miller and Sinclair² within the Callaghan roof pendant, which lies to the east.

DETAILED GEOLOGY

The writer, with the assistance of Jon Coates and Eric Outram, who are geologists, mapped the geology on the G.L. Claim.

Areas of outcrop were outlined, rock type, stratigraphy, schistosity and pyrite content were noted. The following is a description of the rock units. Similar units mapped by Miller in the Callaghan pendant are shown.

<u>Writer's Unit</u>	<u>Miller's Unit No.</u>	<u>Description</u>
A	1	Andesitic to Dacitic fine-grained tuff.
B	3	Medium grained pyroclastic containing plagioclase and hornblende fragments.
C	4?	Rhyolite to dacite flows.
D	-	Andesite to dacite flows with plagioclase phenocrysts.

<u>Writer's Unit</u>	<u>Miller's Unit No.</u>	<u>Description</u>
E	7	Basalt - Garibaldi Group



John McGoran, B.Sc.,

October, 1978

QUALIFICATIONS

1. I graduated from Carleton University in 1972 with a B.Sc. in Geology.
2. I spent twelve years prospecting for economic minerals prior to 1972.
3. I have supervised four joint ventures which were financed by major mining companies.
4. I have practised as a Geologist for the past seven years.

A handwritten signature in cursive script, appearing to read "John McGoran".

John McGoran, B.Sc.,

REFERENCES

1. Woodsworth, G.J.,
1977 Geology Map Sheet (92 J) Pemberton.
2. Miller, J.H.L. and Sinclair, A.J.
Geology of part of the Callaghan Creek Roof
Pendant (92 J 3/W)

EXPENDITURES

CONTROL

B. McKinnon and M. Clarke	June 15 - 25/77	
@ \$50/day		\$300
Camp costs	6 days @ \$25/day	\$150
4wd truck	6days @ \$25/day	\$150

MAPPING

E. Outram and J. McGoran	Sept. 9 - 14, 1977	
@ \$60/day		\$600
J. Coates and J. McGoran	July 22-30 1978	
@ \$60/day		\$1080
Camp costs	18 days @ \$25/day	\$450
4wd truck	18 days @ \$25/day	\$450
Report		\$150
Total		<u>\$3330</u>

GL Claim
Geology

Rock Type

Gambier Group

- A Andesitic to dacitic fine-grained tuff.
- B Medium grained pyroclastic containing plagioclase and hornblende fragments.
- C Rhyolite to dacite flows.
- D Andesite to dacite flows with plagioclase phenocrysts.

Garibaldi Group

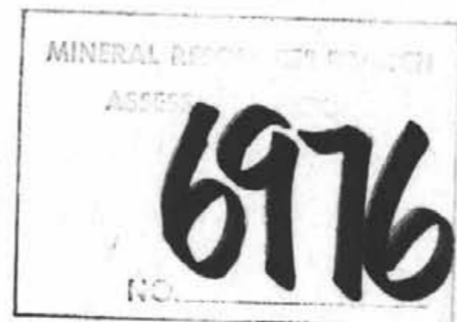
- E Basalt



scale 1:5000

Legend

- outline of outcrop
- stratigraphy
- schistosity
- fault
- inferred contact
- dyke



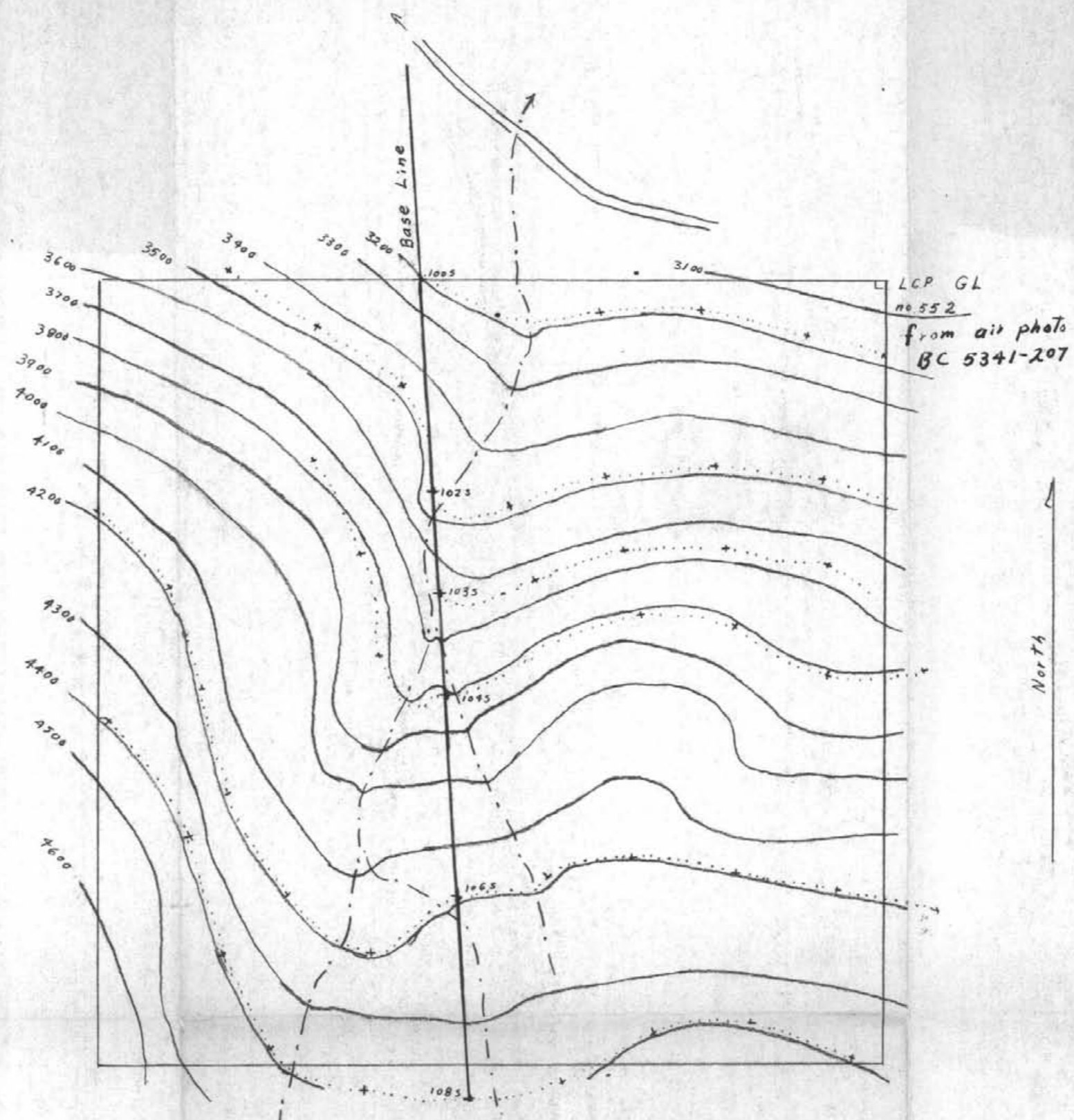
GL Claim

Geology

To accompany geological report
on GL claim Oct 1978

by J. McGoran.

GL Claim
Grid Map



LCP GL
no 552
from air photo
BC 5341-207

Scale 1:5000

Legend

- 4300 — 4300 foot contour
- + ····· + 100 metre interval on traverse line
- · - · - · creek
- ==== logging road

GL Claim
Control

to accompany geological report
on GL claim oct 1978

by J. McGowan

MINERAL RESOURCES
ACTS, 1976
6976
NO