

COMINCO LTD.

EXPLORATION
N.T.S. 92I/9W

WESTERN DISTRICT
10 SEPTEMBER 1978

ASSESSMENT REPORT

PERCUSSION DRILLING

WILDROSE MINERAL CLAIM (RECORD NO. 978)

KAMLOOPS M.D., B.C.

120°20'30" 50°35'00"

DRILLING PERFORMED 13-15 AUGUST, 1978

INTRODUCTION:

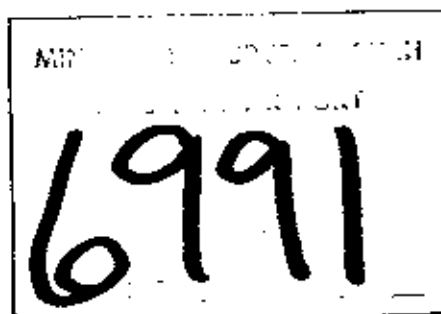
This report describes a percussion drilling program on Cominco's Wildrose M.C. located in the Iron Mask batholith in the Kamloops M.D. south central British Columbia. The target on this property is an I.P. anomaly which had previously only been tested on the adjoining property to the east, namely, the REG.

SUMMARY:

Cominco Ltd. is the owner by location of the 20 unit Wildrose Mineral Claim (Record No. 978) recorded 10 August 1977. This property defines mineral rights in Upper Triassic Nicola volcanics and coeval intrusive rocks of the Iron Mask batholith near the western batholithic contact in the Edith Lake area. Potential exists on the property for alkaline porphyry copper deposits. Four vertical percussion holes totalling 245 m (810 feet) are submitted for assessment credits. This drilling was done in a completely drift-covered area in the eastern part of the claim.

This drilling encountered only traces of copper mineralization with pyrite and magnetite, the principal chargeable minerals available to explain the I.P. anomaly.

Iron Mask Hybrid phase is the predominant rock type in the area. A substantial section of the Cherry Creek unit, the youngest batholithic phase, was encountered in PH WR78-9. This hole includes some Hybrid phase at the top, and it has a noticeably higher trace copper content than the other holes drilled in the program.



PREVIOUS WORK:

During the late 1960's and early 1970's exploration work in the area was carried out mainly by Royal Canadian Ventures and Great Plains Development Company of Canada Ltd. This work included geological, geochemical and geophysical surveys with extensive percussion and diamond drilling carried out by Great Plains. Cominco's interest resulted from a re-evaluation of all data available on the area which included our own geological work and the recently completed mapping by Ken Northcote, B.C. Department of Mines.

PERCUSSION DRILLING AND SAMPLING:

The drilling was contracted to Al Miller Percussion Drilling, Kamloops, B.C. Samples were collected in plastic refuse containers, a flocculating agent added to settle out the fines and the free water decanted. The remaining material was then poured through a large plastic funnel into filter bags which allowed most of the remaining water to drain or evaporate over a period of several hours. Filter bags containing samples were packaged in plastic bags and shipped to the Vancouver Laboratory of Cominco Ltd. for routine geochemical (A.A.) analytical procedures with determinations made for copper on all samples and gold, silver and molybdenum on composite samples. The assay results are included with this report.

Drill cuttings were examined briefly at the drill site with the aid of a ten power hand lens. This type of examination identified general rock types, alteration and qualities and approximate quantities of sulphides encountered.

TECHNICAL DATA:

Plate 2 shows the location of the drill holes at a scale of 1:5,000. Drill holes have been tied to claim posts, a lake and fences by closed chain and compass traverses. This information is expected to assist interested parties in finding the position of drill holes when the drill sites become overgrown.

ROCK DEFINITIONS:

Hybrid phase in percussion cuttings is an intermediate looking intrusive containing abundant mafics, no quartz, very little pink feldspar and abundant mafic volcanic inclusions.

Cherry Creek unit in percussion cuttings is a "monzonitic-looking" granitoid textured intrusive containing no quartz, abundant feldspar and a large portion of which is pink in colour suggesting it may be Kspar, although at least some of this feldspar is likely hematized plagioclase.

3.

Sugarloaf unit in percussion cuttings is "dioritic-looking" as it contains no quartz and contains abundant feldspar but very little pink feldspar and no mafic volcanic inclusions.

ROCK DESCRIPTION:

PH WR-78-6

Depth: 60.6 m (200')

<u>Interval</u>	<u>Lithology</u>	<u>Description</u>
0- 67' (0-20.3 m)	Overburden	
67-200' (20.3-60.6 m)	Hybrid Phase intruded by Cherry Creek dykes	Mainly intermediate looking intrusive without free quartz and containing no pink feldspars. Abundant volcanic inclusions. Short sections of "monzonitic" intrusives are probably dykes of Cherry Creek unit. $\frac{1}{2}$ to 1% pyrite throughout the section with epidote locally abundant. Fine grained magnetite abundant in sections of Hybrid phase. Traces of chalcopryite.

END

PH WR-78-7

Depth: 63.6 m (210')

<u>Interval</u>	<u>Lithology</u>	<u>Description</u>
0- 12' (0-3.6 m)	Overburden	
12-210' (3.6-63.6 m)	Hybrid phase	Hybrid as 67-200' in PH 78-6; including scattered sections of feldspathic rock containing little Kspar may be Sugar Loaf dykes. $\frac{1}{2}$ to 1% pyrite overall. Magnetite abundant in mafic sections. Traces of chalcopryite.

END

4.

PH WR-78-8

Depth: 60.6 m (200')

<u>Interval</u>	<u>Lithology</u>	<u>Description</u>
0- 15' (0-4.5 m)	Overburden	
15-200' (4.5-60.6 m)	Hybrid phase	Hybrid as 67 to 200' in PH-78-6 without Sugarloaf or Cherry Creek dykes. Chloritized mafics and epidote common. About 1% pyrite throughout. Traces of chalcopyrite. Abundant fine grained magnetite.

END

PH WR-78-9

Depth: 60.6 m(200')

<u>Interval</u>	<u>Lithology</u>	<u>Description</u>
0- 15' (0-4.5 m)	Overburden	
15- 80' (4.5-24.2 m)	Hybrid phase and Cherry Creek dykes	Hybrid as 67-200' in PH 78-6. Scattered sections containing abundant pink feldspar may be Cherry Creek. ½% pyrite. Fine grained magnetite ubiquitous. Traces of chalcopyrite.
80-200' (24.2-60.6 m)	Cherry Creek unit	"Monzonitic" intrusive containing abundant pink feldspar ½% pyrite. Minor chalcopyrite.

CONCLUSIONS:

Only trace amounts of copper mineralization occur in the area tested. The Iron Mask Hybrid phase is the dominant rock type and this is occasionally intruded by dykes of the youngest batholithic members, namely, the Cherry Creek and Sugarloaf units. The latter units are relatively favourable for the occurrence of copper mineralization elsewhere in the batholith and the relative scarcity of them in the area drilled could be taken as limiting the potential of the area. Percussion hole WR-78-9 is seen to

5.

contain much higher background copper values than any of the other holes. This may be partially a reflection of the occurrence of an extensive section of Cherry Creek unit in this hole.

Report by: Ragnar U Bruaset
R.U. Bruaset,
Project Geologist

Endorsed by: F.L. Wynne
F.L. Wynne,
Senior Geologist

Approved for
Release by: G. Harden
G. Harden,
Manager, Exploration
Western District

RUB: gk

Attachments:

Plate 1: Location map Scale 1:50,000
Plate 2: Drilling Plan Scale 1:5,000
Statement of Qualifications
Statement of Expenditure
Assay sheets

STATEMENT OF QUALIFICATIONS

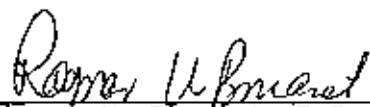
WILDROSE PROPERTY

I, Ragnar U. Bruaset, with business address at 409 Granville Street, Vancouver, British Columbia, V6C 1T2, do hereby certify that I have supervised the percussion drilling programme on the Wildrose property.

I also certify that:

1. I am a graduate of the University of British Columbia with a degree of B.Sc. in geology 1967.
2. That I have been involved in exploration work for Cominco Ltd. since 1967 and that I have been involved in all phases of porphyry copper exploration and development since 1968 to the present.

Respectfully submitted:



Ragnar U. Bruaset, B.Sc.
Project Geologist

STATEMENT OF EXPENDITURE

WILDROSE CLAIM

Contract (Al Miller Percussion Drilling Ltd.)	\$ 2,940
Salary: R.U. Bruaset	665
Bob Ryzniuk	216
Domicile	180
Assaying	277
Transportation	184
Miscellaneous	<u>200</u>
	<u>\$4,662</u>

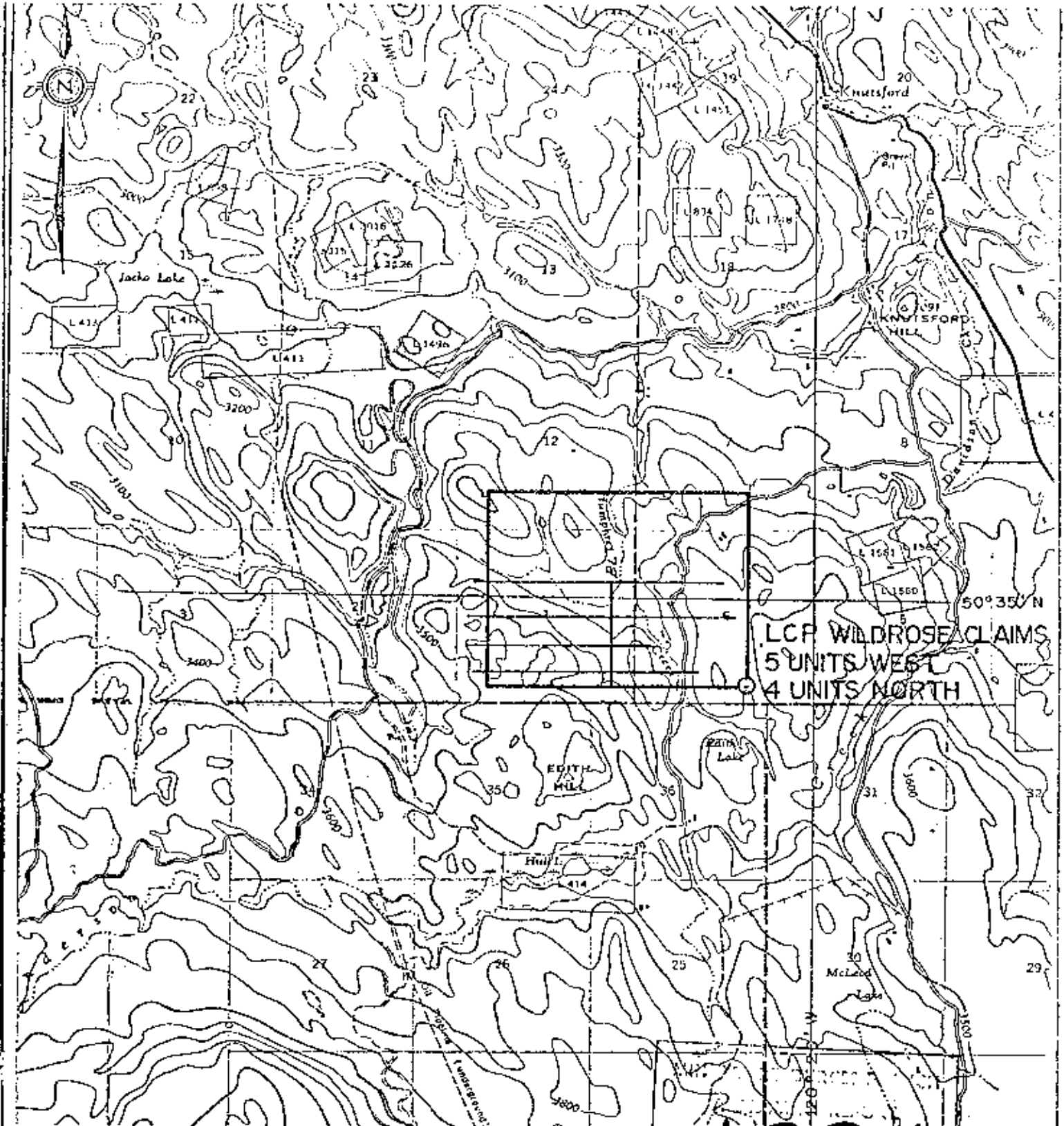
Cost/foot = \$ 5.76

Cost/meter = \$19.01

WILDROSE PROPERTY
Percussion Drilling Assays for Holes MR-78-6, 7, 8, 9

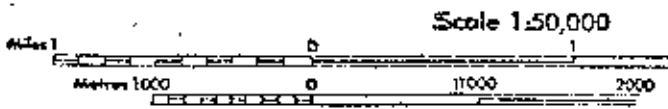
				Cu ppm		
R78 06139	12064	I	64-80'	597	PH MR-78-6 Composite #R78 6309 < 10 nob Au < 0.4 ppm Ag 10 ppm Mo	
R78 06140	12065	I		1380		
R78 06141	12066	I		484		
R78 06142	12067	I		353		
R78 06143	12068	I		402		
R78 06144	12069	I		254		
R78 06145	12070	I		288		
R78 06146	12071	I		285		
R78 06147	12072	I		290		
R78 06148	12073	I		250		
R78 06149	12074	I		264		
R78 06150	12075	I		261		
R78 06151	12076	I	120-200'	1500		
R78 06152	12077	I	12-30'	235		PH MR-78-7 Composite #R78 6310 < 10 ppb Au < 0.4 ppm Ag 4 ppm Mo
R78 06153	12078	I		356		
R78 06154	12079	I		403		
R78 06155	12080	I		380		
R78 06156	12081	I		350		
R78 06157	12082	I		240		
R78 06158	12083	I		246		
R78 06159	12084	I		300		
R78 06160	12085	I		320		
R78 06161	12086	I		195		
R78 06162	12087	I		244		
R78 06163	12088	I		204		
R78 06164	12089	I		218		
R78 06165	12090	I		171		
R78 06166	12091	I		143		
R78 06167	12092	I		218		
R78 06168	12093	I		213		
R78 06169	12094	I		181		
R78 06170	12095	I	200-210'	134		
R78 06171	12096	I	15-30'	91	PH MR-78-8 Composite #R78 6311 < 10 ppb Au < 0.4 ppm Ag 5 ppm Mo	
R78 06172	12097	I		136		
R78 06173	12098	I		84		
R78 06174	12099	I		81		
R78 06175	12100	I		480		
R78 06176	12101	I		348		
R78 06177	12102	I		137		
R78 06178	12103	I		141		
R78 06179	12104	I		214		
R78 06180	12105	I		140		
R78 06181	12106	I		108		
R78 06182	12107	I		174		
R78 06183	12108	I		93		
R78 06184	12109	I		178		
R78 06185	12110	I		142		
R78 06186	12111	I		246		
R78 06187	12112	I		180		
R78 06188	12113	I	120-200'	115		
R78 06218	12114	I	15-30'	384	PH MR-78-9 Composite #R78 6313 < 10 ppb Au < 0.4 ppm Ag 10 ppm Mo	
R78 06219	12115	I		469		
R78 06220	12116	I		780		
R78 06221	12117	I		700		
R78 06222	12118	I		695		
R78 06223	12119	I		587		
R78 06224	12120	I		408		
R78 06225	12121	I		535		
R78 06226	12122	I		422		
R78 06227	12123	I		690		
R78 06228	12124	I		700		
R78 06229	12125	I		1000		
R78 06230	12126	I		860		
R78 06231	12127	I		518		
R78 06232	12128	I		475		
R78 06233	12129	I		600		
R78 06234	12130	I		554		
R78 06235	12131	I	120-200'	530		

6991
 NO.



50°35' N
 LCP WILDROSE CLAIMS
 5 UNITS WEST
 4 UNITS NORTH

6991



P. J. ...

NTS
 92 1/9

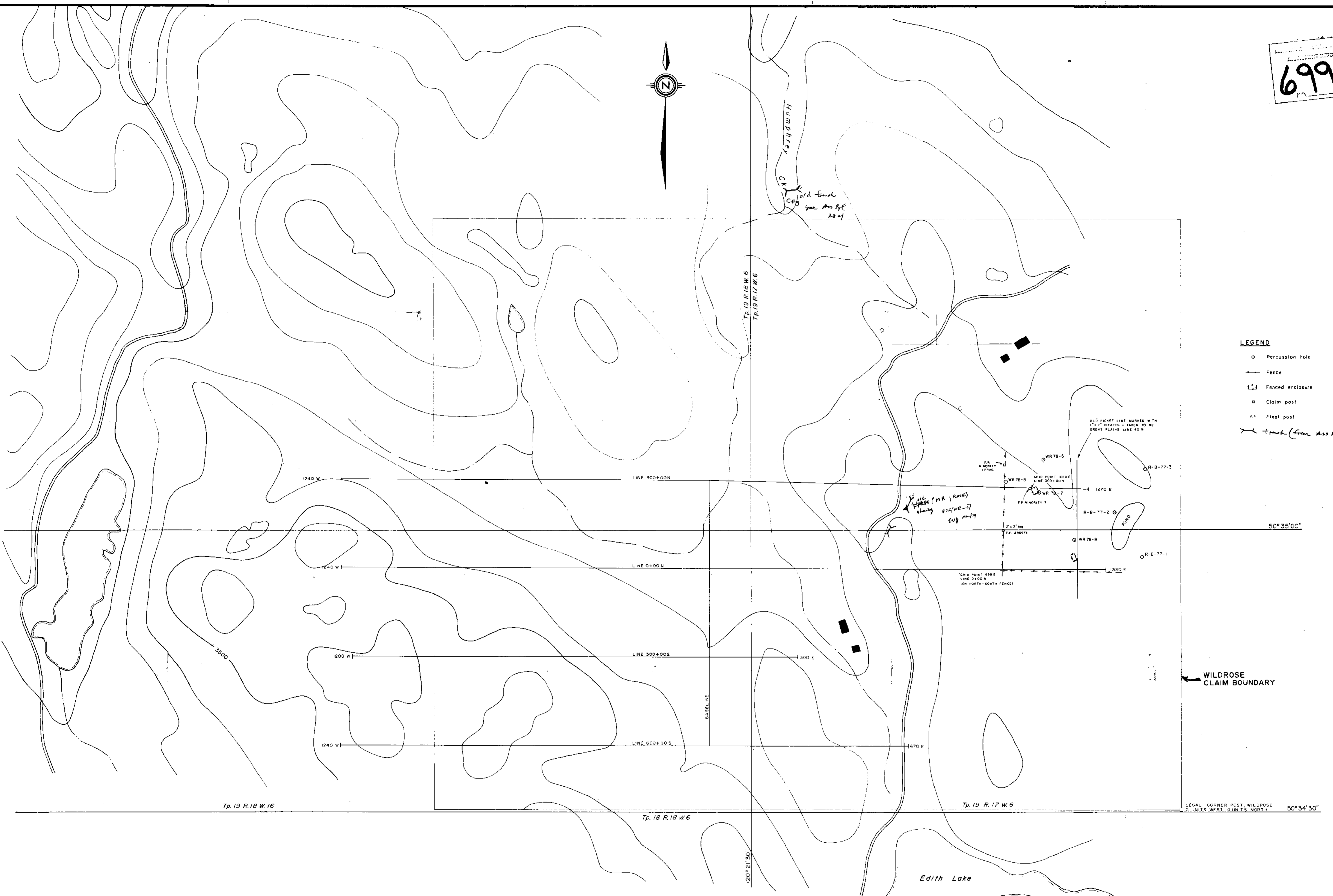
Drawn by:		Traced by:	
Checked by	Date	Checked by	Date

LOCATION MAP

KAM LOOPS M. D., B. C.

Scale: 1:50,000 Date: JUNE 1978 Plate: 28-78-1

ASSESSMENT REPORT
6991



- LEGEND**
- Percussion hole
 - Fence
 - ▭ Fenced enclosure
 - Claim post
 - FP Final post
 - + mark (from Ass Pat 2324) (V.B.)

R. J. ...

WILDROSE MINERAL CLAIM KAMLCOPS MD. 92/10

Drawn by:	Traced by:
Checked by:	Reviewed by:
Date:	Date:

PERCUSSION DRILLING PLAN

Scale: 1" = 5,000' Date: APRIL 1978 Plate: 2

FORM 210 (66)