

ASSESSMENT REPORT

TYPE: DIAMOND DRILLING
CLAIMS: NN-1, NN-2, NN-3
MINING DIVISION: KAMLOOPS
NTS LOCATION: 82L/14 E
LATITUDE: 50° 52'
LONGITUDE: 119° 08'
OWNER: CRAIGMONT MINES LIMITED
OPERATOR: " " "
AUTHOR: N.B. VOLLO, P.ENG.
DATE: DEC. 14th, 1978

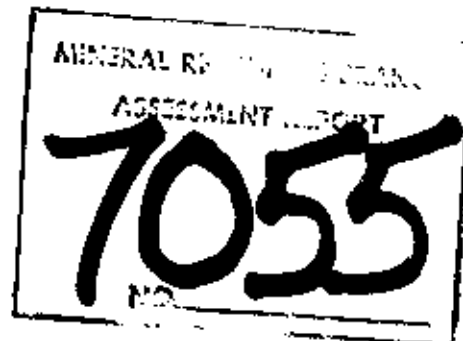


TABLE OF CONTENTS

Location and access	1
Claims	1
History and previous work	1
Geology	1
Drill Program	1
Core Storage	1
Qualifications	1
Statement of Expenditures	2
Location Map	3
Drill log, NN-1	4
NN-2	6
NN-3	8

In Pocket

Drill Plan, 1:5000, 82L/14NN-1

LOCATION AND ACCESS

The 82L/14 NN group is located on Big Bastion Mountain, between the Main and Salmon arms of Shuswap Lake, about 25 km NE of Salmon Arm. Access is by poor logging roads, some of which are being rebuilt.

CLAIMS

The property consists of three claims, NN-1, 2 and 3, record numbers 663, 664 and 818, totalling 47 units, all in the Kamloops Mining Division and held by Craigmont Mines Limited.

HISTORY AND PREVIOUS WORK

Claims have been held in the immediate area before but the writer knows of no previous work. The present claims were staked following an airborne electromagnetic and magnetic survey by Craigmont in 1976. Geochemical, ground EM and magnetic surveys were completed in 1977.

GEOLOGY

The group is underlain by rocks of the Eagle Bay formation (Jones, A.G., GSC Mem. 296, 1959). A sequence of siliceous and graphitic tuffites, rhyolitic flows and fragmentals, andesitic flows, and limestone, trend WNW across the property and immediately overly a thick ignimbrite unit to the south.

DRILL PROGRAM

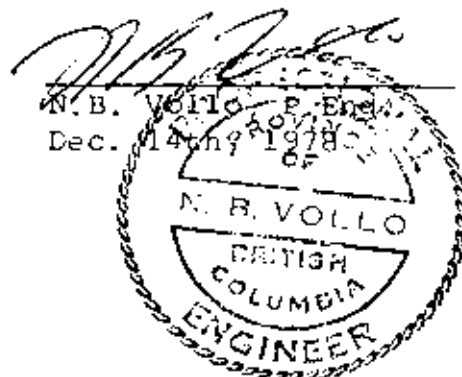
Three diamond drill holes totalling 295 m were drilled to test coincident EM conductors and geochemical highs, which in all cases proved to be due to graphitic tuffites.

CORE STORAGE

Core was left at drillsites.

QUALIFICATIONS

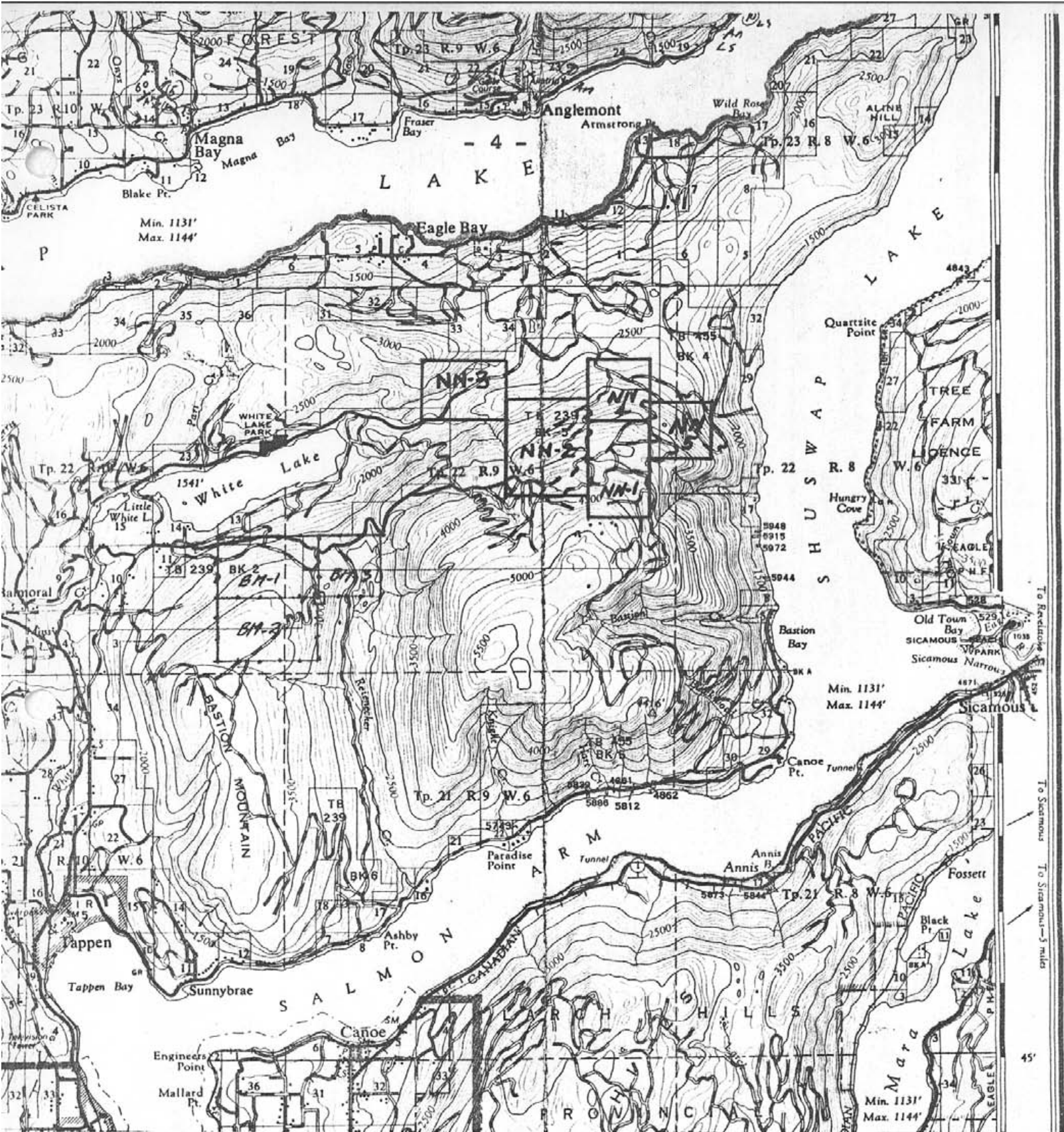
The core was logged by the author who obtained a BA in Geology from the University of Saskatchewan in 1950, an MSc in geology from McGill University in 1959, and who has practiced his profession for 28 years.



STATEMENT OF EXPENDITURES

NN-1, 3.0 m overburden at \$40.00/m -----	\$ 120
97.0 m core at \$32.80/m -----	3181
Mobilization and demobilization -----	167
Total, NN-2 claim -----	<u>3468</u>
NN-2, 11.4 m overburden at \$40.00/m -----	\$ 456
83.2 m core at \$32.80/m -----	2728
NN-3, 4.0 m overburden at \$40.00/m -----	160
97.0 m core at \$32.80/m -----	3181
mobilization and demob. prorated -----	333
Total, NN-1 claim -----	<u>\$6858</u>

Contractor: H. Allen Diamond Drilling Ltd.,
Box 1397,
MERRITT, B.C.



CRAIGMONT MINES LIMITED

LOCATION MAP

82L/14 NN GROUP

1:125,000

DIAMOND DRILL CORE LOG - SAMPLE RECORD

DEPTH	DIP	BEARING	AST.
COLLAR	-55°	South	

PROPERTY 82L/14 NN CLAIM NN-2 HOLE NO. NN-1
 LATITUDE _____ STARTED May 23rd, 1978 CORE SIZE AQ
 DEPARTURE _____ FINISHED May 28th, 1978 SECTION 9600E
 ELEVATION 1160 TOTAL LENGTH 100 11140N
 LOGGED BY N.B. Vollo

DEPTH	DESCRIPTION	MINERALIZATION	SAMPLE	FROM	TO	m	Cu %	Pb %	Zn %	Au ppm	Ag ppm
0.0	Casing										
3.0	Tuffite - black, chloritic, sheared and crenulated 35° CA - 5-10% white quartz calcite.	sparse cse py									
6.7	- becomes grey, very siliceous, with 20% white quartz	5% py, sps. Ga									
9.7	- black, chloritic, sheared and crenulated 45°. 50% grey cherty qtz. Graphitic slips throughout - good bedding 45°	1 - 2 % py	2501	9	10	1				tr	tr
			2502	19	20	1				tr	1
			2503	29	30	1				tr	tr
30.0	- becomes greenish grey, epidote rich.										
31.4	- grey and black, banded, sh'd and crenulated	5% py									
33.0	- becomes green, well bedded 45°, andesitic										
34.5	- grey and black banded chert and graphite	2% py	2504	39	40	1				tr	2
42.5	- green, andesitic										
44.5	- grey, mostly chert, with black chlorite-graphite bands. Well bedded 45°. 15 to 20% white quartz.	2 - 5% py									
			2505	49	50	1				tr	tr
61.0	- becomes very siliceous - 80% quartz with graphitic bands	2-3% py, spse Ga	2506	59	60	1				tr	1

DIAMOND DRILL CORE LOG -- SAMPLE RECORD

PROPERTY 82L/14 NNHOLE No. NN-1SHEET No. 2 of 2

DEPTH	DESCRIPTION	MINERALIZATION	SAMPLE	FROM	TO	m	Cu %	Pb %	Zn %	Au ppm	Ag ppm
	73.0 - 95% grey and white quartz	1-2% py, spse	2507	69	70	1				nil	nil
		ga	2508	79	80	1				tr	tr
	80.0 - becomes dark, chloritic and graphitic										
	82.0 lost core										
	83.0 - 95% quartz, almost white.	spse py ga									
	85.6 - becomes dark grey, cherty and graphitic - 20% white quartz veins	5% diss py									
	95.2 - fault gouge - black, intensely brecciated, muddy and graphitic.										
	99.5 - white, quartzly gouge.										
100.0	End										

DIAMOND DRILL CORE LOG - SAMPLE RECORD

DEPTH	DIP	BEARING
COLLAR	-55°	south

PROPERTY 82L/14 NN CLAIM NN-1 HOLE NO. NN-2
 LATITUDE STARTED May 22nd, 1978 CORE SIZE AQ
 DEPARTURE FINISHED May 28th, 1978 SECTION 10400E
 ELEVATION 1270 TOTAL LENGTH 94.6 10265N
 LOGGED BY N.B. Vollo

DEPTH	DESCRIPTION	MINERALIZATION	SAMPLE	FROM	TO	m	Cu %	Pb %	Zn %	Au ppm	Ag ppm
0.0	Casing										
11.4	Tuffite - grey, very siliceous, band- ed 70° CA, brecciated, with black graphitic slips										
	13.7 - lost core										
	15.8 - as before - 10% white quartz stringers numerous graphitic slips parallel to bedding.	1-3% py									
	47.3 - lost core										
	48.0 - as before - abundant graphite	spse py									
	59.5 lost core										
	60.0 - as before										
62.0	Andesite tuff - green, banded 50° CA with 20% quartz calcite stringers.										
63.5	Tuffite - grey, banded 40°, graphitic with 50% white quartz. 70° fault gouge on contact to										
69.0	Andesite tuff - greenish brown, inter- bedded with 20% white quartz-carb. at 20-40° CA.										
72.6	Fault zone - black graphitic gouge.										
	73.2 lost core										
74.2	Andesite tuff - green, banded 45° - 20% quartz calcite										

DIAMOND DRILL CORE LOG -- SAMPLE RECORD

PROPERTY 82L/14 NN

HOLE No. NN-2

SHEET No. 2 of 2

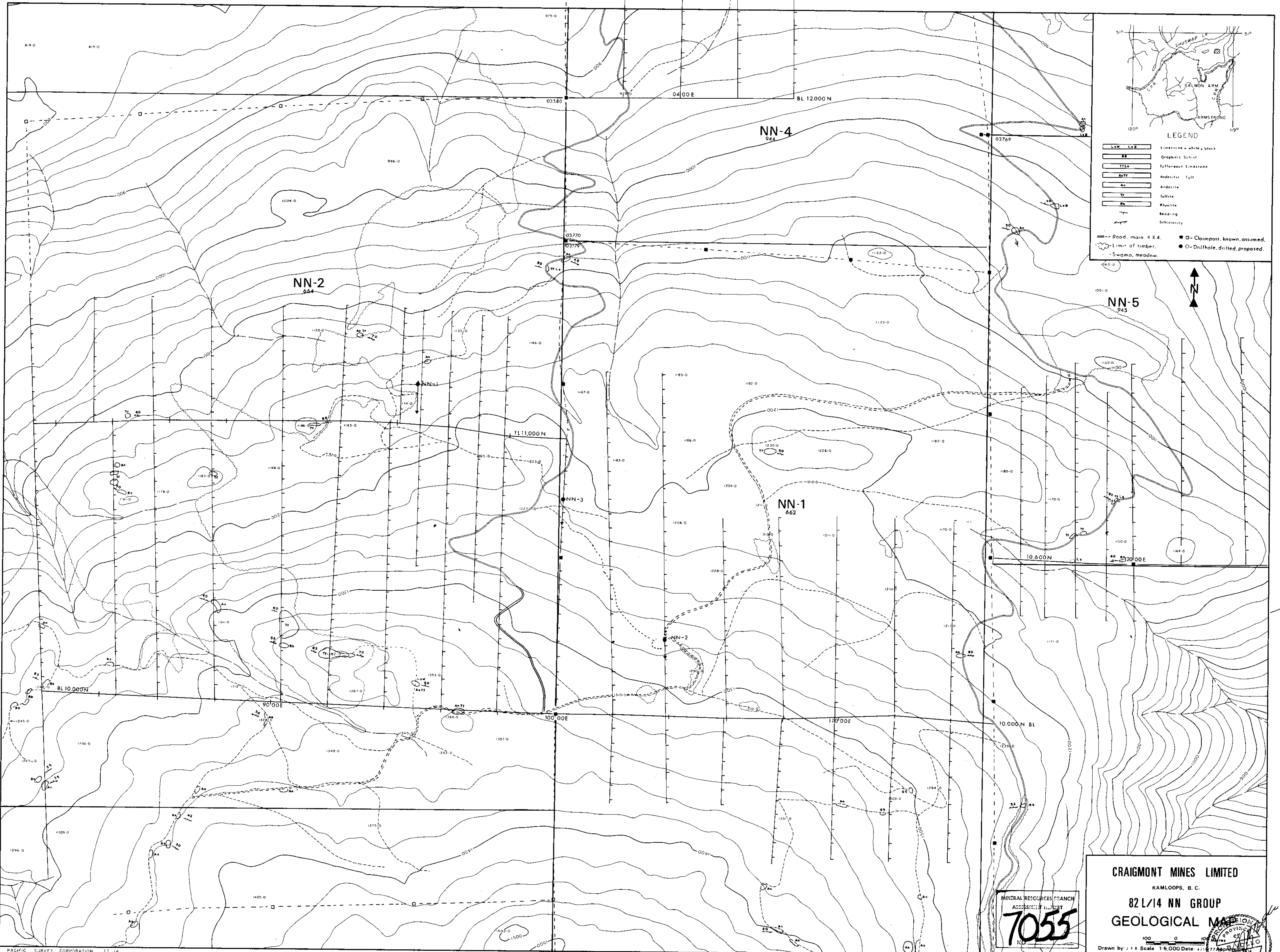
DEPTH	DESCRIPTION	MINERALIZATION	SAMPLE	FROM	TO	m	Cu %	Pb %	Zn %	Au ppm	Ag ppm
	75.2 - lost core										
77.5	Rhyolite fragmental - dark grey green, coarse textured, bedded 70° - .4 m										
	grey qtz porphyry dike at 81.7										
	83.3 - lost core										
	84.0 - as before										
	90.2 - lost core										
	91.0 - as before										
91.3	Dike - light grey green, fine, with broken phenocrysts of feldspar and pyroxene.										
	94.3 - quartz vein										
94.6	END										

DIAMOND HILL CORE LOG - SAMPLE RECORD

DEPTH	DIP	BEARING INT.
COLLAR	-55°	South

PROPERTY 87L/14 NN CLAIM NN-1 HOLE NO. NN-3
 LATITUDE _____ STARTED May 29th, 1978 CORE SIZE AQ
 DEPARTURE _____ FINISHED June 2nd, 1978 SECTION 10000E
 ELEVATION 1220 TOTAL LENGTH 101.0 1075.0N
 LOGGED BY N.B. Vollo

DEPTH	DESCRIPTION	MINERALIZATION	SAMPLE	FROM	TO	m	Cu %	Pb %	Zn %	Au ppm	Ag ppm
0.0	Casing										
4.0	Andesite tuff - light green, bedded 70-90° CA with 5-10% white quartz veinlets.										
30.0	- same, but with 20-30% white quartz carbonate along bedding. Mod. chloritized.										
43.5	- becomes fairly uniform, with 10% white quartz calcite veins along 80-90° bedding.										
53.0	Tuffite - black, graphitic, cherty	5-10% py	2510	54	55	1				tr	tr
54.5	- becomes light grey to white, very siliceous, poorly bedded 70°.										
58.7	- grey, well bedded 70-80° with graphitic bands.										
61.0	- becomes siliceous, poorly bedded, with sections of white quartz		2511	64	65	1				tr	1
76.7	Andesite - light green, fairly uniform, with 15-20% white quartz calcite veins - a few cherty tuffite bands. Interfingers to		2512	74	75	1				tr	2
82.0	Tuffite - black banded graphite and chert with 10% white quartz veinlets along bedding.		2513	84	85	1				tr	2



LEGEND

---	Road, main 4 X 4.	■	Claimpost, known, assumed.
- - -	Limit of timber.	○	Drillhole, drilled, proposed.
~ ~ ~	Swamp, meadow.		
Lw	Limestone - white, black		
GS	Graphic Schist		
TTL	Tuffaceous Limestone		
AnTf	Andesite Tuff		
An	Andesite		
Tf	Tuffite		
Rh	Rhyolite		
	Bedding		
	Schistosity		

CRAIGMONT MINES LIMITED
 KAMLOOPS, B. C.
82 L/14 NN GROUP
GEOLOGICAL MAP

MINERAL RESOURCES BRANCH
 ACCESSIBILITY REPORT
7055

Scale 1:5,000 Date: 4/1/77
 Drawn by: J. S. Scale 1:5,000 Date: 4/1/77
 COLUMBIA ENGINEERING