

Amended

Assessment Report

on a

Sampling Program

on the

Halo A and Halo B Groups of Mineral Claims
(Halo 100, 200, 300, 400, 500, 600, and 700)

covering the

Big Kidd Breccia

Aspen Grove Area

Nicola Mining Division, B. C.

Latitude $49^{\circ}47'N$; Longitude $120^{\circ}35'W$

N.T.S. 92H/15E

Field Work from November 15, 1978 to November 22, 1978.

January, 1979,
Delta, B. C.
Revised February 9, 1979.

Report by
R. Ross Dion
and
D. R. Cochrane,



Cochrane Consultants Limited
4882 Delta St., Delta, B.C. V4K 2T8 946-9221
Geotechnical Consulting / Exploration Services

geology
geophysics
geochemistry



TABLE OF CONTENTS

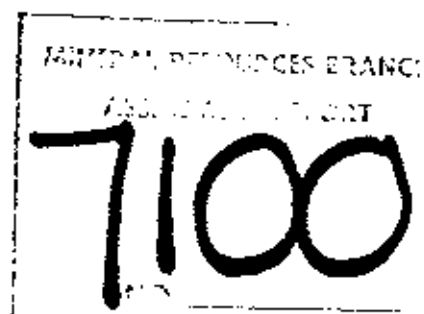
	Page
INTRODUCTION.....	1
LOCATION AND ACCESS.....	2
CLAIMS INFORMATION.....	3
GENERAL SETTING.....	4
SUMMARY	5
DESCRIPTION OF WORK.....	6
DISCUSSION OF RESULTS.....	7

APPENDICES

- I Assessment Work Details
- II Geochemical Certificates
- III Certificates
- IV Bibliography

FIGURES

1	Location Map	Report body
2.	Claims Map	" "
3.	Sample Locations	Map Pocket
4.	Sample Plan Adit No. 1	Report body
5.	" " " " 2	" "
6.	" " " " 3	" "

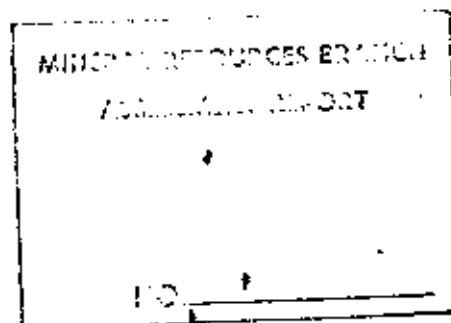


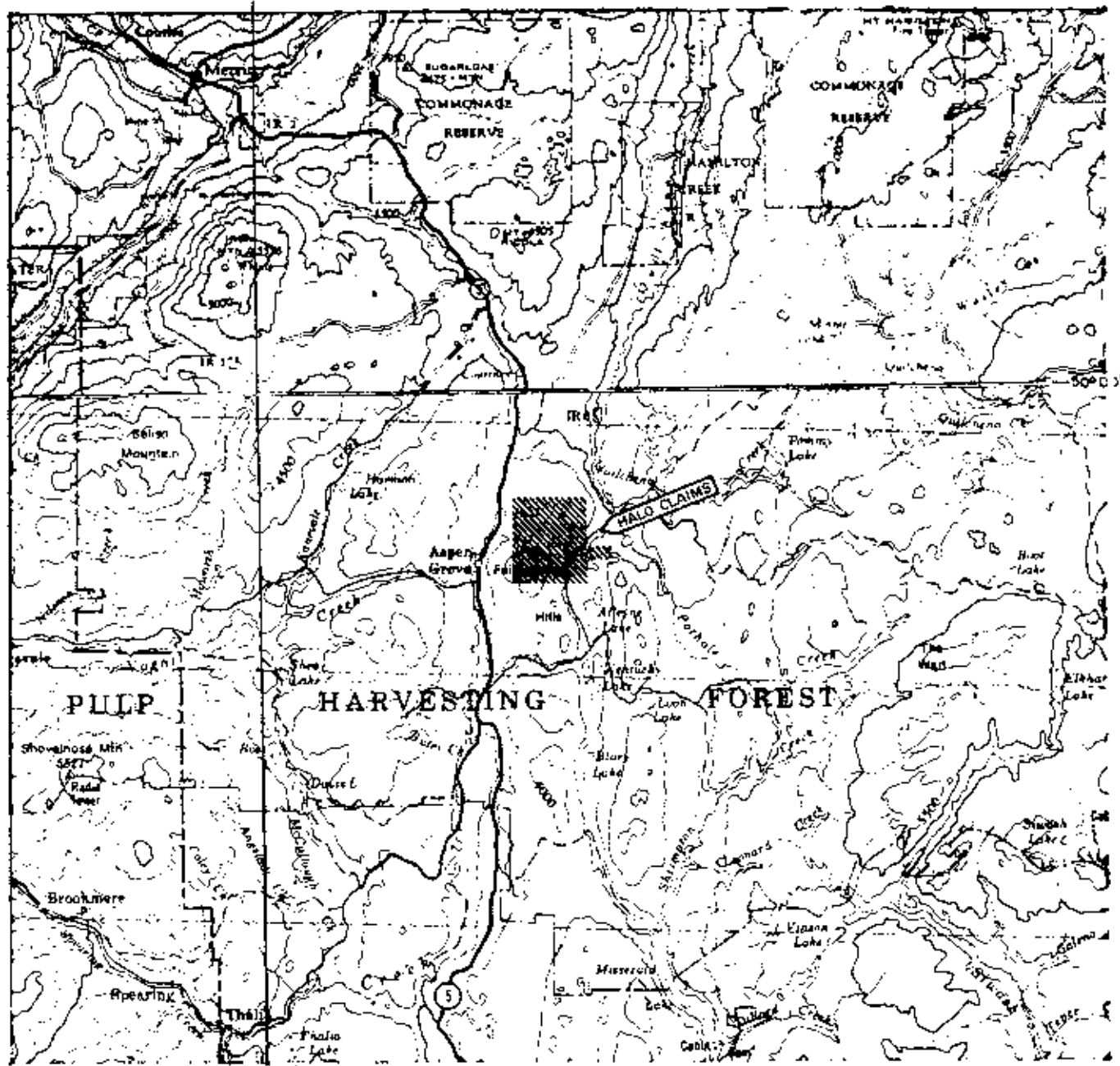
INTRODUCTION

In November, 1978, a geologist and field crew was mobilized to the Big Kidd Breccia Property now covered by the Halo Groups of mineral claims just east of Aspen Grove B. C. The purpose of the program was to fulfill assessment work requirements, and to initiate a sampling program recommended in a report dated March 2, 1978, by D. R. Cochrane (private company report) wherein emphasis would be directed to gold and silver with associated copper values, and not visa versa as in past programs.

Field work commenced on the 15th day of November, 1978 and continued to the 22nd day of November, 1978. Work was supervised by Mr. Ross Dion, of Delta, B. C.

This report describes the work done and results obtained and has been prepared for assessment work submission. Assessment work details and costs incurred are set out in Appendix I at the end of this report.



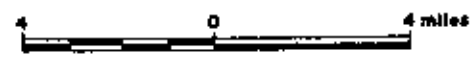


Rio Plata Silver Mines LTD

Big Kidd Property (Halo Claims). 92H/15
Aspen Grove, B.C. Nicola M.D.

Figure 1
Location Map

Scale: 1 to 250000 or 1 inch equals approx. 4 miles



Cochrane Consultants Limited
1927 Delta St., Delta B.C. V9L 1Y6, 364-0051

LOCATION AND ACCESS

The Big Kidd Property lies immediately east of the Aspen Grove store on highway #5 and some 61 kilometers north of the town of Princeton and 29 kilometers south of Merritt in the southern interior of British Columbia. Access by car or truck to the center of the claims area may be made via dirt road which proceeds south-easterly, then east, from the highway at a point 3 kilometers north of the store in Aspen Grove. The National Topographic System code for the area is 92H/15E; the latitude $49^{\circ}47'N$ and longitude $120^{\circ}35'W$. (see figure 1)





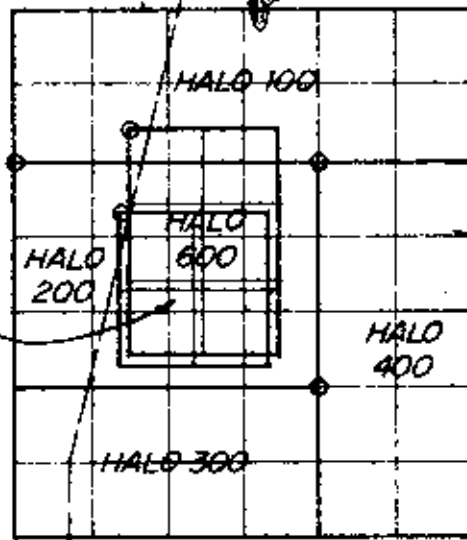
Merritt
21 km

POWER
LINE

Thule
Lake

Deichena
Creek

Pothole
Lake



Aspen
Grove

Kidd
Lake

Alleyne
Lake

Miner
Lake

80

Rio Plata Silver Mines Ltd.

Big Kidd Property (Halo Claims) 92H/15
Aspen Grove, B.C. Nicola M.D.

Figure 2
Claims Map

Scale 1:50,000 (1.25" = 1 mile approx.)



CLAIMS INFORMATION

The following table summarizes pertinent claims information:

CLAIM NAME	NO. UNITS	RECORD NO.	ANNIVERSARY DATE	BEFORE CREDIT	AFTER CREDIT
Halo 100	12	192	November 22	1978	1979
Halo 200	12	193	" "	"	"
Halo 300	8	194	" "	"	"
Halo 400	10	195	" "	"	"
Halo 500	2	200	December 2	"	"
Halo 600	6	206	" 30	"	"
Halo 700	4	219	March 23	1979	1980

The claims are shown on B. C. Department of Mines Mineral Claim Map # 92H/15E (See figure 2). Title to the Halo 100 to Halo 500 claims are held by David Minerals Ltd., 315-850 West Hastings St., Vancouver B. C. Title to the Halo 600 and Halo 700 is held by D. R. Cochrane and is presently being transferred to David Minerals Ltd.



GENERAL SETTING

The Halo group is situated in the Thompson plateau sub-division of the British Columbian interior plateau physiographic system. This is, in general, a gently rolling upland of low to moderate relief. The local Aspen Grove area lies within the Fairweather Hills, with elevations normally between 1,000 and 1,400 meters above sea level. It is rather an impressive area of British Columbia, with a moderately dry climate, open fields, bushy draws and the landscape dotted with lakes.

The general region is underlain predominantly by the Upper Triassic Nicola group of intermediate volcanics with minor sediments. It is intruded by stocks, plugs and dikes of Jurassic (?) age. A series of north striking faults trend across the claims area. One of the focal points of economic interest is the Big Kidd Breccia, consisting of altered, brecciated diorite and chalcocite. A number of pits, adits, trenches and drill holes have partially explored the north portion of the breccia and the area around the Breccia Pipe.



SUMMARY

by R. Ross Dion

The assessment work performed on the Halo mineral claims during 1978 consisted of rehabilitating existing roads, and re-opening existing trenches and adits to obtain samples for gold and silver analysis.

Analysis indicated gold and silver content well above detection limits in nearly all samples.



DESCRIPTION OF WORK

by R. Ross Dion

Work performed consisted of rehabilitating access roads and re-opening existing trenches and adits. A D-7F Bulldozer and operator, working under the direction of Mr. M. Mathieu of Merritt, B. C. was used during the period of November 16 through to November 21, 1978. Working areas re-opened were mapped and sampled by R. Dion, geologist, with assistance from Mr. D. Heino, prospector.

A total of four (4) trenches and three (3) adits were sampled, generally by continuous channel samples, except where trenches were not successfully cleaned to bed-rock, in which case, by large grab samples.

A detailed analysis of time and costs is included (See Appendix I).



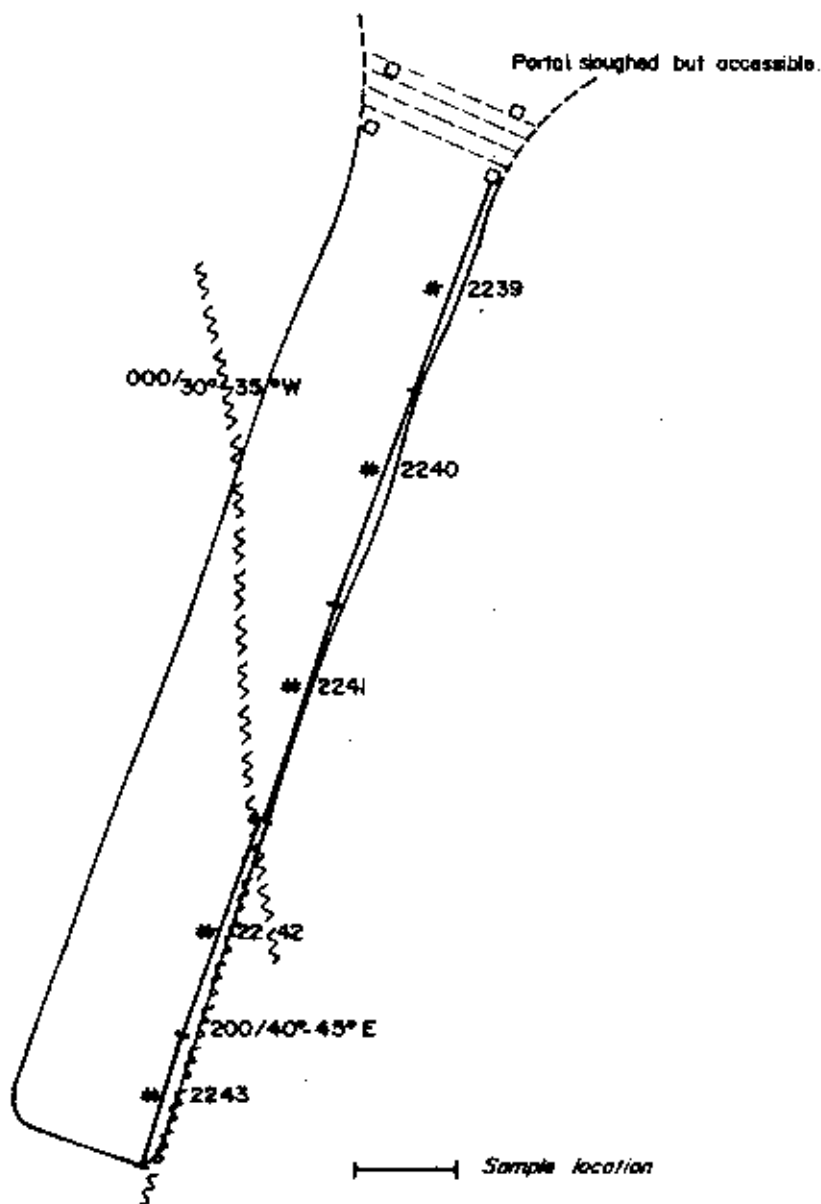
DISCUSSION OF RESULTS

In order to more accurately determine precious metal values a geochemical method was performed by Min-En Laboratories Ltd. using atomic adsorption techniques. Results were obtained in parts per million (ppm) for copper and silver and parts per billion (ppb) for gold. The detection limit is 5 ppb for gold and 0.1 ppm for silver.

The following may be of some help in converting to assay values:

-
- | | | |
|----|-----------------|---|
| 1. | Copper geochem. | 10,000 ppm is equivalent to 1.0%.
1,000 ppm is equivalent to 0.1%. |
|----|-----------------|---|
-
- | | | |
|----|-----------------|---|
| 2. | Silver Geochem. | 29.1667 ppm is equivalent to
1.00 troy ounce per short ton,
or 1 ppm is equivalent to
3.429×10^{-2} troy ounces per
short ton. |
|----|-----------------|---|
-
- | | | |
|----|---------------|--|
| 3. | Gold Geochem. | 29,166.7 ppb is equivalent to
1.00 troy ounce per short ton,
or 1 ppb is equivalent to
3.429×10^{-5} troy ounces per
per short ton. |
|----|---------------|--|
-





Rio Plata Silver Mines Ltd.

Big Kidd Property (Halo Claims) 92H/15
Aspen Grove, B.C. Nicola Mining Division

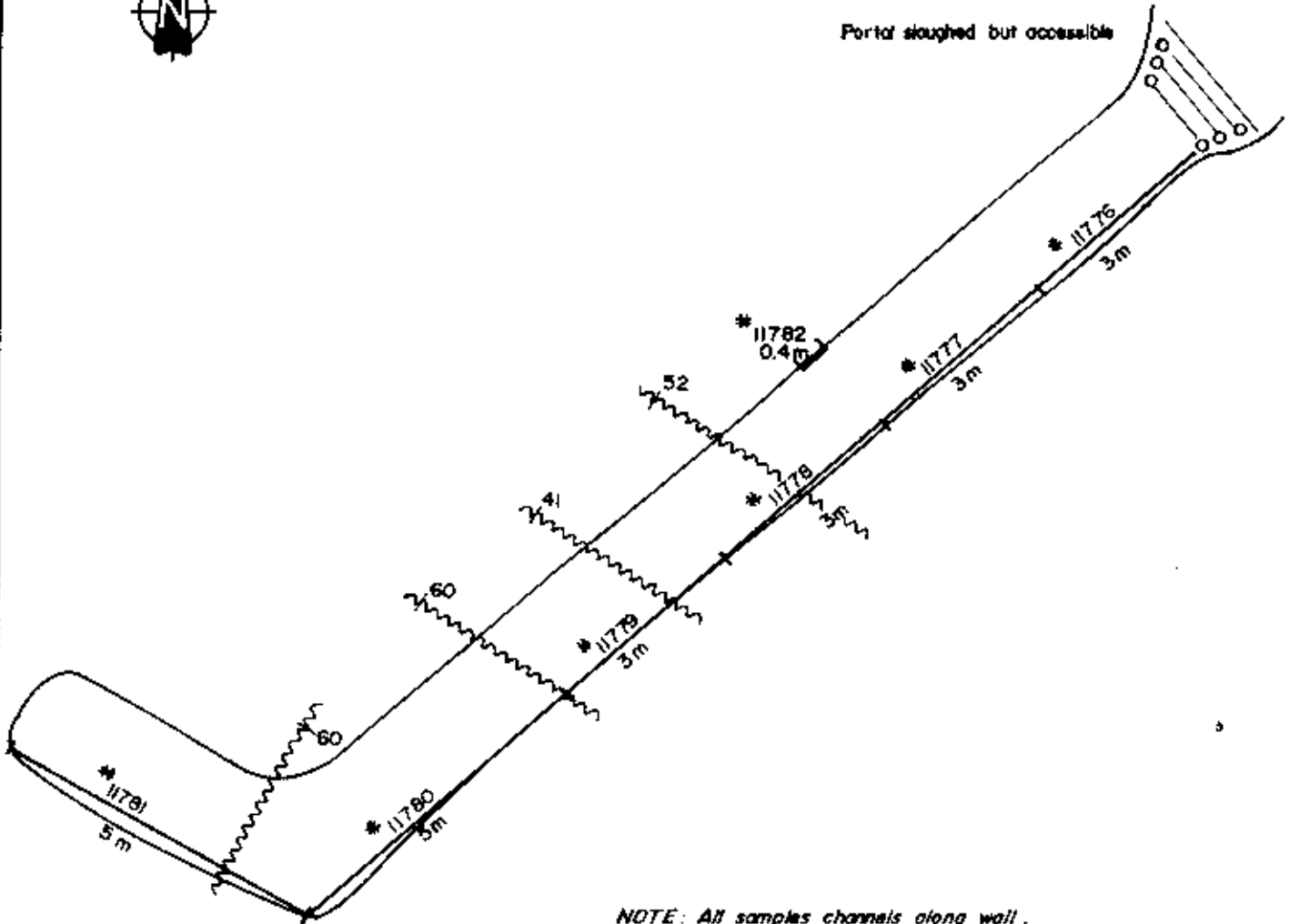
Figure 4
Sample Plan — Adit No. 1

Scale : 1:100





Portal sloughed but accessible

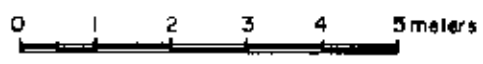


NOTE: All samples channels along wall.
— Sample location.

Rio Plata Silver Mines Ltd.
Big Kidd Property (Halo Claims) 92H/15
Aspen Grove, B.C. Nicola Mining Division

Figure 6
Sample Plan — Adit No. 3

Scale : 1:100



R.R.O. Jan. 79 Traced by P.K.C.



The following results were obtained:

ADIT #1				
SAMPLE NO.	LENGTH (m)	Cu (ppm)	Ag (ppm)	Au (ppb)
2239	3	565	1.2	40
2240	3	7,050	9.6	120
2241	3	21,500	34.0	345
2242	3	11,000	16.8	105
2243	2	2,900	3.2	75
length weighted average		9,010	13.66	141.43
Assay equivalents		0.9%	0.468 troy oz/ton	0.005 troy oz/ton

ADIT #2				
SAMPLE NO.	LENGTH (m)	Cu (ppm)	Ag (ppm)	Au (ppb)
2244	2	2,300	2.9	105
2245	2	402	2.1	35
2246	2	1,350	2.1	85
2247	2	632	1.8	25
2248	2	905	1.7	35
2249	2	238	1.4	5
2250	2	740	1.9	20
average		938	1.99	44.3
Assay equivalents		0.09%	0.068 troy oz/ton	trace



ADIT #3				
SAMPLE NO.	LENGTH (m)	Cu (ppm)	Ag (ppm)	Au (ppb)
11776	3	695	1.4	20
11777	3	1,045	1.7	40
11778	3	740	1.4	15
11779	3	2,500	1.9	30
11789	5	1,850	2.5	30
11781	5	8,550	8.2	105
Length weighted average		3,043	3.305	45
Assay equivalent		0.3%	0.11 troy oz/ton	trace

Big Trench (50 to 85 m 7-5 m channels).				
SAMPLE NO.		Cu (ppm)	Ag (ppm)	Au (ppb)
11783		1,240	2.3	50
11784		1,515	2.4	70
11785		3,350	4.9	130
11786		3,000	3.9	145
11787		2,150	2.9	120
11788		2,700	3.4	70
11789		2,625	3.8	80
Average		2,369	3.37	95
Assay equivalent		0.2%	0.12 troy oz/ton	0.003 troy oz/ton



Big Trench (#12) Grab samples from 100 to 180 m			
SAMPLE NO.	Cu (ppm)	Ag (ppm)	Au (ppb)
11790	1,020	2.4	50
11791	1,565	3.0	15
11792	1,580	3.1	5
11793	6,075	5.3	30
11794	820	2.0	15
Average	2,212	3.16	23
Assay equivalent	0.22%	0.11 troy oz/ton	trace

Big Trench (#12) Channel from 185 to 190 m			
SAMPLE NO.	Cu (ppm)	Ag (ppm)	Au (ppb)
11795	6,175	5.0	70
Assay equivalent	0.62%	0.17 troy oz/ton	0.002 troy oz/ton



Trench #4 (Noranco Trench) 9 channel samples, over 27 m			
SAMPLE NO.	Cu (ppm)	Ag (ppm)	Au (ppb)
2226	2,400	1.1	135
2227	1,900	0.9	80
2228	2,975	1.1	160
2229	1,850	1.2	135
2230	2,950	1.6	80
2231	1,800	1.4	95
2232	1,975	1.7	130
2233	3,375	1.2	110
2234	815	1.1	30
Average	2,227	1.26	106
Assay equivalent	0.22%	0.04 troy oz/ton	0.004 troy oz/ton

Area # 14 (1 channel sample and 3 grabs, two grab samples from the north-south trench, one from the shaft and one channel from an east-west trench)			
SAMPLE NO.	Cu (ppm)	Ag (ppm)	Au (ppb)
2235	2,950	2.2	110
2236	1,625	1.6	65
2237	295	0.8	15
2238	5,425	2.6	170
Average	2,574	1.8	90
Assay equivalent	0.26%	0.062 troy oz/ton	0.003 troy oz/ton



Respectfully submitted



Robert Ross Dion
January 1979
Delta, B. C.



D. R. Cochrane, P. Eng.
February 9, 1979
Delta, B. C.



APPENDIX I

ASSESSMENT WORK DETAILS

PERSONNEL:

D. R. Cochrane, P. Eng., November 16, 1978
 R. Ross Dion (Zest Management Co. Ltd.) field geologist,
 November 17 to 22, 1978 (inclusive)
 D. Heino, Prospector, November 16 to 22, 1978, (inclusive)
 M. Mathieu, (Scope Exploration), prospector, November
 15 to 22, 1978 (inclusive)
 Pooley Bros. Ltd. (D-7F Cat rental), November
 16, 17, 19, 20, 21, 1978.
 Draftsperson, November 24 to December 4, 1978
 (various hours)
 Min-En Laboratories Ltd., samples submitted November 27,
 1978, report dated December 1, 1978.

COST BREAKDOWN*

Zest Management Ltd.....	\$ 1,104.34
D. Heino	744.85
Scope Exploration Ltd.	1,630.90
Pooley Bros. Ltd.	1,175.52
Drafting - 29½ hrs. @ \$12.75/hr.....	376.13
Min-En Labs Ltd.	366.75
Reproduction	29.84
Delivery of samples	8.35
Postage	1.02
Sample bags (100 bags @ \$.15/bag)	15.00
Total.....	\$ 5,452.70

*Costs do not include preparation and reproduction of this report,
 nor amendments

Cont'd.....



COST BREAKDOWN (Cont'd)

COST APPROPRIATION

GROUP	CLAIMS	AMOUNT FILED	DATE
Halo 'A'	Halo 100,200,500	\$ 2,600.00	Nov. 22, 1978
	" 600, 700	\$ 1,037.57*	Jan. 2, 1979
Halo 'B'	Halo 300, 400	\$ 1,800.00	Nov. 22, 1978
Total work filed		\$ 5,437.57	

* Amount submitted under Section A (Physical) of Statement of Exploration and Development.



APPENDIX II

Geochemical Certificates



GEOCHEMICAL ANALYSIS DATA SHEET

No. 8-584

PROJECT No: 5555

MIN - EN Laboratories Ltd.

DATE: Dec. 1,

705 WEST 15th ST., NORTH VANCOUVER, B.C. V7M 1T2
PHONE (604) 980-5814

1978.

ATTENTION:

6	10	15	20	25	30	35	40	45	50	55	60	65	70	75	80
Sample Number	Mo ppm	Cu ppm	Pb ppm	Zn ppm	Ni ppm	Co ppm	Ag ppm	Fe ppm	Hg ppb	As ppm	Mn ppm	Au ppb			
81	90	95	100	105	110	115	120	125	130	135	140	145	150	155	160
2226		2400					11					135			
27		1900					09					80			
28		2975					11					160			
29		1850					12					135			
30		2950					16					80			
31		1800					14					95			
32		1975					17					130			
33		3375					12					110			
34		815					11					30			
35		2950					22					110			
36		1625					16					65			
37		295					08					15			
38		5425					26					170			
39		565					12					40			
40		7050					96					120			
41		21500					340					345			
42		11000					168					105			
43		2900					32					75			
44		2300					29					105			
45		402					21					35			
46		1350					21					85			
47		632					18					25			
48		905					17					35			
49		238					14					5			
2250		740					19					20			
							:								
							:								
							:								
							:								
							:								

N.B. Most of these samples should have been assayed.

CERTIFIED BY

GEOCHEMICAL ANALYSIS DATA SHEET

No. 8-584

PROJECT No.

5555

MIN - EN Laboratories Ltd.

DATE: Dec. 1,

705 WEST 15th ST., NORTH VANCOUVER, B.C. V7M 1T2

PHONE (604) 980 5614

1978.

ATTENTION:

Sample Number	Mo ppm	Cu ppm	Pb ppm	Zn ppm	Ni ppm	Co ppm	Ag ppm	Fe ppm	Hg ppb	As ppm	Mn ppm	Au ppb				
at	86	90	95	100	105	110	115	120	125	130	135	140	145	150	155	160
11776		695					14					20				
77		1045					17					40				
78		740					14					15				
79		2500					19					30				
80		1850					25					30				
81		8550					82					105				
82		460					19					125				
83		1240					23					50				
84		1515					24					70				
85		3350					49					130				
86		3000					39					145				
87		2150					29					120				
88		2700					34					70				
89		2625					38					80				
90		1020					24					50				
91		1565					30					15				
92		1580					31					5				
93		6075					53					30				
94		820					20					15				
11795		6175					50					70				
							:									
							:									
							:									
							:									
							:									
							:									
							:									
							:									
							:									
							:									
							:									
							:									
							:									
							:									
							:									
							:									
							:									

N.B. Most of these samples should have been assayed.

CERTIFIED BY

[Handwritten Signature]
 12/01/78

APPENDIX III

CERTIFICATE:

I Donald Robert Cochrane, of the Municipality of Delta, British Columbia, do hereby certify that:

1. I am a consulting geological engineer with an office at 4882 Delta Street, Delta, B. C.
2. I am a graduate of the University of Toronto (1962) with a degree in Applied Geology (B.A. Sc.) and a graduate of Queen's University (1964) with a degree in Economic Geology (M. Sc., Eng.).
3. I have practiced my profession continuously since graduation while being employed by such companies as Noranda Exploration Co. Ltd., Quebec Cartier Mines, and Meridian Explorations Syndicate. I have been in private independant practice since 1969.
4. I am a member in good standing of the Association of Professional Engineers (A.P.E.) of the Province of British Columbia, and also a member of the A.P.E. in the Province of Ontario, Saskatchewan, Alberta and the Yukon Territories.



(signed) D. R. Cochrane, P. Eng.



APPENDIX III

CERTIFICATE:

I, Robert Ross Dion, of 5446 - 7B Avenue, Delta, B. C., hereby certify that:

1. I attended the University of B. C., Dept. of Applied Science, and completed all the requirements of the Bachelor of Applied Science, Geological Engineering, in 1961, except the Bachelor's Thesis.
2. I have been employed in various responsible positions in the mining industry during the period 1961 to the present (except for the period 1965 to 1970 inclusive, during which I was employed as a securities salesman) some of which are as follows:

Spring 1962 to Spring 1963: Mine Surveyor and Mining Engineer, Jersey Mine, Canadian Exploration Ltd., Salmo, B. C.

Spring 1963 to Fall 1964: Resident Geologist & Mine Engineer, Peso Silver Mines Ltd., Mayo, Y. T.

Fall 1964 to Fall 1965: Engaged in independent Prospecting, B. C. and Y. T.

Fall 1970 to 1976: Self-employed, Geologist Prospector, and Contract Exploration services. throughout B. C., Y.T. and N.W. U.S.A.

1977 & 1978 Resident Geologist, Interior B. C., Abacus Industries Ltd., of Vancouver, B. C.

1979 Self-employed, Geologist & Prospector.

(Cont'd...)



CERTIFICATE (Cont'd)

3. I have no interest, direct or indirect, in the properties or securities of Rio Plata Silver Mines Ltd., nor David Minerals Ltd., nor do I expect to receive any.



(signed) Robert Ross Dion
January, 1979
Delta, B. C.



APPENDIX IV

BIBLIOGRAPHY:

Cochrane, D. R.,

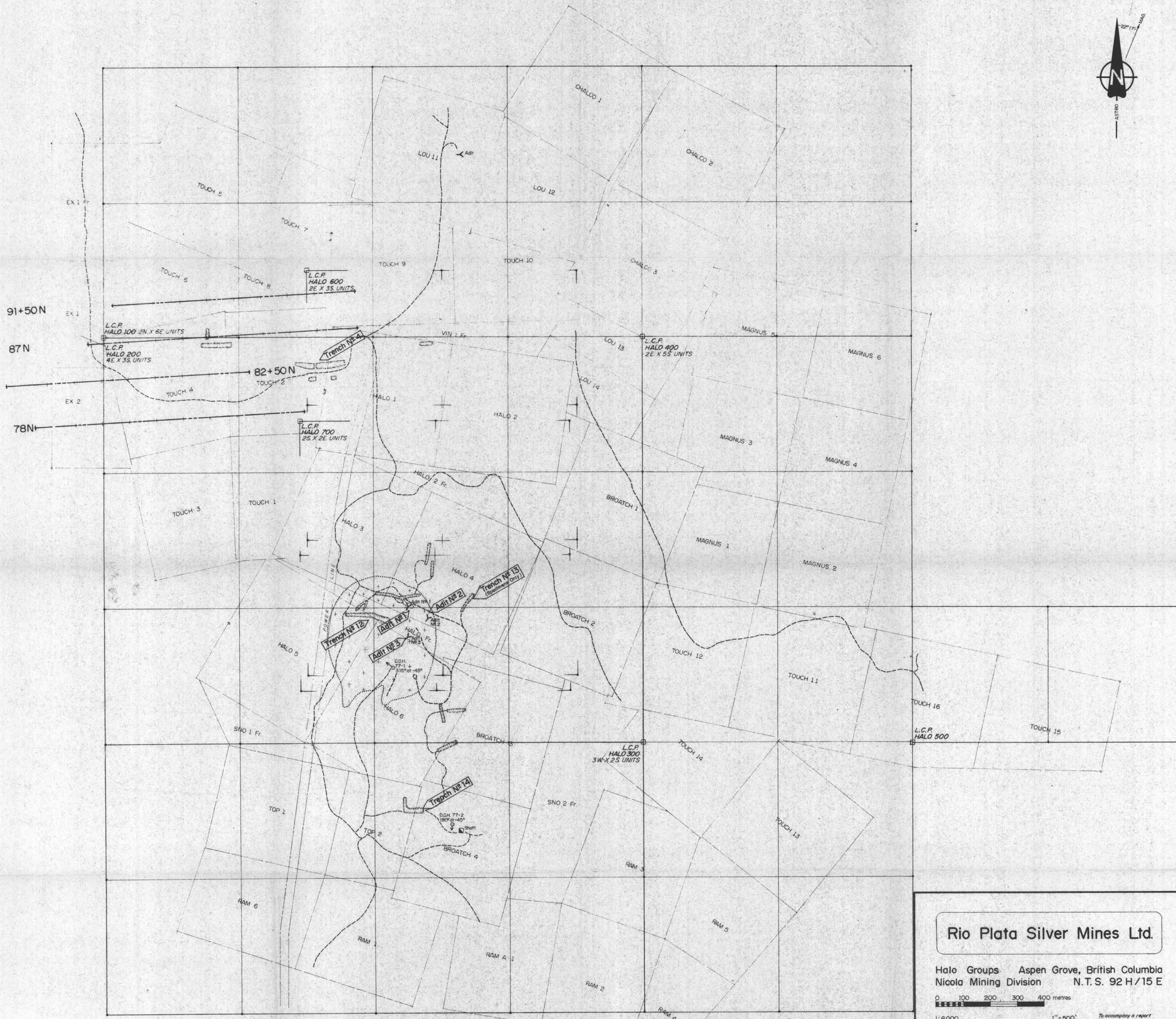
March 2, 1978: Report on the Big Kidd Property. (private report).

Cochrane, D. R.,

December 7, 1977: Assessment Report on 2 Diamond Drill Holes, Halo Group of Mineral Claims.

Sampling Plan, Geology Map, Amax Exploration Inc., 1972.



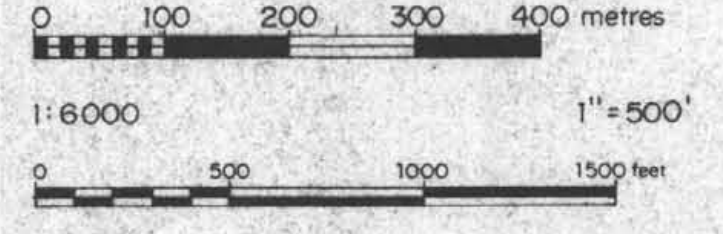


LEGEND:

- BIG KIDD BRECCIA PIPE
- 1976 I.P. SURVEY LINE (CUT & FLAGGED)
- TRENCH
- 4x4 ROAD
- ABANDONED CLAIMS
- L.C.P.
- NEW M.Q.S. CLAIMS
- Adit No. 00
- 1978 SAMPLE LOCATIONS

Rio Plata Silver Mines Ltd.

Halo Groups Aspen Grove, British Columbia
 Nicola Mining Division N.T.S. 92 H/15 E



To accompany a report
 by R. Glen G. Cochrane, P.Eng.,
 on the Halo Claims, dated
 January, 1978. Delta, B.C.
 and revised February 9, 1979.

FIGURE 3
1978 SAMPLE LOCATIONS



Cochrane Consultants Limited
 4883 Delta Dr., Delta, B.C. V4K 2T8 945-9221