

GEOLOGICAL AND GEOCHEMICAL
REPORT ON THE JANET, JANET 1,
BIRDIE LOAD, GOLD, QUARTZ
CREEK, LONE EAGLE, ECLIPSE,
ANNA, STANDARD, AGNES, PIONEER,
OYSTER, EVENING STAR, LUKE,
MARK, JOHN, PETER ROCK, TANIS,
GOLDEN WOLFE, AZLIN MINERAL
CLAIMS SITUATED IN THE FORT
STEELE MINING DIVISION
(NTS: 82F/8E,9E)

on behalf of:

MERIDIAN RESOURCES LIMITED
706-675 West Hastings Street
Vancouver, B.C.

by

D. F. Symonds, B.Sc.

MONTGOMERY CONSULTANTS LIMITED

December 1, 1978.

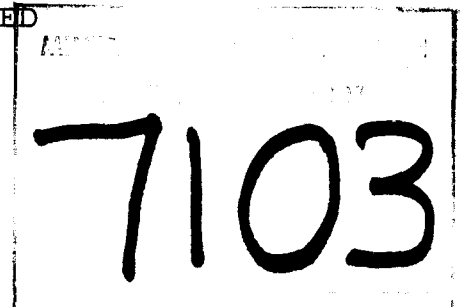


TABLE OF CONTENTS

	<u>Page</u>
1.0 INTRODUCTION	1.
2.0 SUMMARY & CONCLUSIONS	2.
3.0 LOCATION & ACCESS	3.
4.0 CLAIM INFORMATION	4.
5.0 GEOLOGY	6.
5.10 Regional Geology	6.
5.20 Local Geology	8.
6.0 GEOCHEMISTRY	9.
7.0 COST STATEMENT	11.

FIGURES

1. Location Map	5.
2. Claims Map	5A.
3. Regional Geology	7.
4. Local Geology/Geochemical Plan(Gold)	pocket
5. Arithmetic Histogram(Gold in Soils & Sediments - P.P.B.)	10.

APPENDICES

- I. Sample Results - Montgomery Consultants Limited Sampling
- II. Sample Results - Meridian Resources Limited Sampling

1.0 INTRODUCTION

This report has been written on behalf of Meridian Resources Limited, of 706-675 West Hastings Street, Vancouver, B.C. on the Perry Creek gold prospects, near Cranbrook, B.C.

The report is based on field work carried out from June 21 to November 19, 1978 on the Janet, Janet 1, Birdie Load, Gold, Quartz Creek, Lone Eagle, Eclipse, Anna, Standard, Agnes, Pioneer, Oyster, Evening Star, Luke, Mark, John, Peter Rock, Tanis, Golden Wolfe and Azlin mineral claims situated in the Fort Steele Mining Division. A total of 20 claims(67 units) are represented by these claims.

This report describes geological and geochemical work carried out in the claim area and recommends follow-up work in anomalous areas.

2.0 SUMMARY & CONCLUSIONS

Meridian Resources Limited, of 706-675 West Hastings Street, Vancouver, B.C. holds title to 20 claims(67 units) in the Perry Creek area near Cranbrook, B.C. The property is about 18 kilometers west of Cranbrook in the Moyie Range of the Purcell Mountains.

The area is underlain mainly by quartzites of the Creston formation which are cut by Moyie intrusions, major faults and numerous large quartz veins. The quartz veins and adjacent fault gouge and wall rock are, in places, mineralized with gold associated with pyrite, chalcopyrite, galena and sphalerite. Tungsten has also been found in several localities.

During the period of June 21 to November 19, 1978, rock, soil and stream sediment samples were taken by personnel from Montgomery Consultants Limited and Meridian Resources Limited. Approximately 350 total samples were taken(see Figure 4).

Soil and stream sediment sampling resulted in the detection of several anomalous areas which should be further investigated by trenching and additional sampling.

3.0 LOCATION & ACCESS

The Perry Creek gold prospects are located about 18 kilometers south of Kimberly, B.C. and about 18 kilometers west of Cranbrook, B.C. (see Figure 1 for approximate location). The claims are situated in the Moyie Range of the Purcell Mountains. Elevations range from 1,220 meters (4000 feet) to 1,980 meters (6,500 feet). The country is well-timbered but rises steeply to peaks of about 2,440 meters (8000 feet) on either side of Perry Creek.

NTS REFERENCE: 82F/8E, 9E

LATITUDE: 49° 30' N

LONGITUDE: 116° 04' W

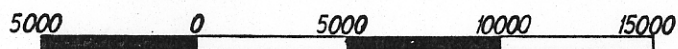
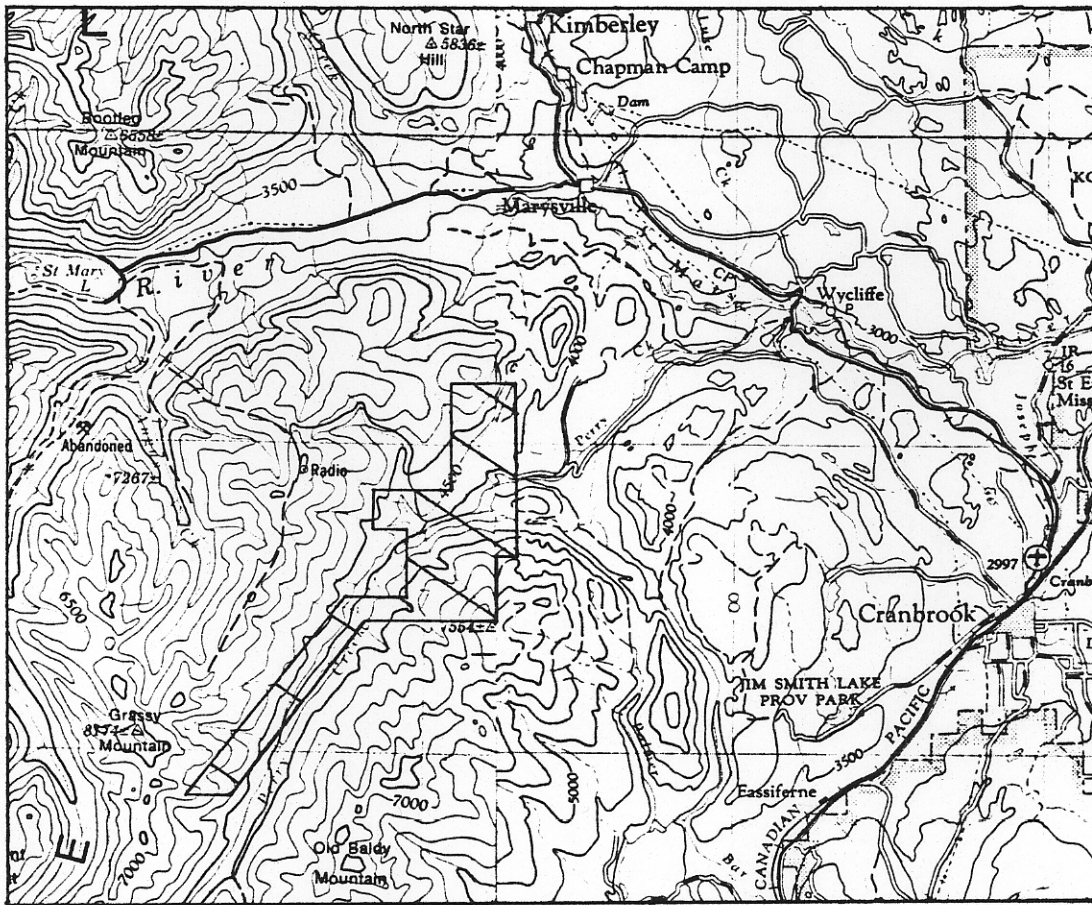
Access to the claim area is generally good. A gravel road leaves the highway about 15 kilometers northwest of Cranbrook, B.C. and runs westerly along Perry Creek. A number of logging roads and old pack trails provide access to many of the areas of interest along Perry Creek.

4.0 CLAIM INFORMATION

Meridian Resources Limited, of 706-675 West Hastings Street, Vancouver, B.C. holds title to 20 mineral claims(67 units) all located within the Fort Steele Mining Division of British Columbia. (see Figure 2). Claim information is listed in the following table: (Note that claim expiry dates are pending acceptance of this report).

CLAIM NAME	RECORD NO.	EXPIRY DATE
Peter Rock(9)	397(11)	November 16, 1979
Tanis(4)	149(2)	February 4, 1980
Azlin(6)	394(11)	November 16, 1979
Gold(10)	148(2)	February 4, 1980
Birdie Load(1)	395(11)	November 16, 1980
Janet(1)	86(10)	October 22, 1979
Janet 1(4)	87(10)	"
Golden Wolfe(4)	396(11)	November 16, 1979
John(4)	138(11)	November 24, 1979
Mark(6)	136(11)	"
Luke(9)	137(11)	"
Eclipse(1)	343(11)	November 7, 1979
Anna(1)	344(11)	"
Standard(1)	345(11)	"
Agnes(1)	346(11)	"
Pioneer(1)	347(11)	"
Oyster(1)	348(11)	"
Evening Star(1)	349(11)	"
Quartz Creek(1)	98(11)	November 4, 1980
Lone Eagle(1)	97(11)	"

20 claims(67 units).



METERS

FIGURE 1

LOCATION MAP

PERRY CREEK GOLD PROSPECTS

MONTGOMERY CONSULTANTS LIMITED

DECEMBER 1, 1978

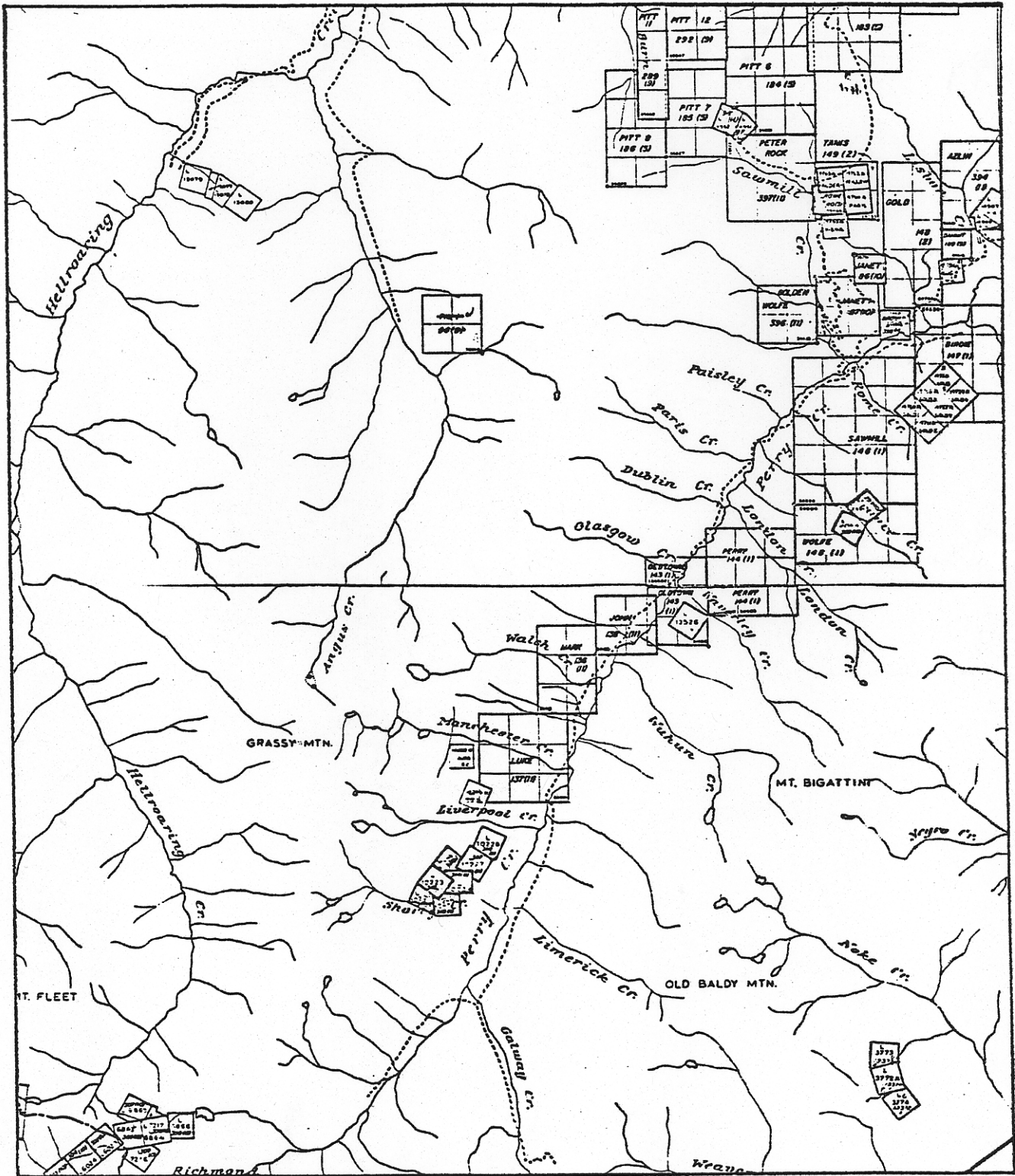


FIGURE 2
CLAIM MAP
PERRY CREEK GOLD PROSPECTS

5.0 GEOLOGY

5.10 Regional Geology

The regional geology of part of the claim area has been mapped by G. B. Leech(1952). The relevant portion of this map is reproduced in Figure 3.

The major part of the area is underlain by the Creston formation(Unit 5) and the Kitchener-Siyeh formation(Unit 6). Both formations are of Proterozoic age. The rock units shown in Figure 3 are described by Leech as follows:

Unit 1 - Aldridge formation(lower division) - rusty-weathering grey quartzite, siltstone and argillite; grey-weathering massive quartzite; metamorphosed equivalents.

Unit 5 - Creston formation - grey and grey-weathering green, grey and purplish argillaceous quartzite.

Unit 6 - Kitchener-Siyeh formation - varicoloured argillites and dolomitic argillites, mostly buff and brown-weathering; buff and brown-weathering dolomite, commonly sandy.

Unit 8 - Moyie Intrusions - meta-diorite and meta-quartz diorite.

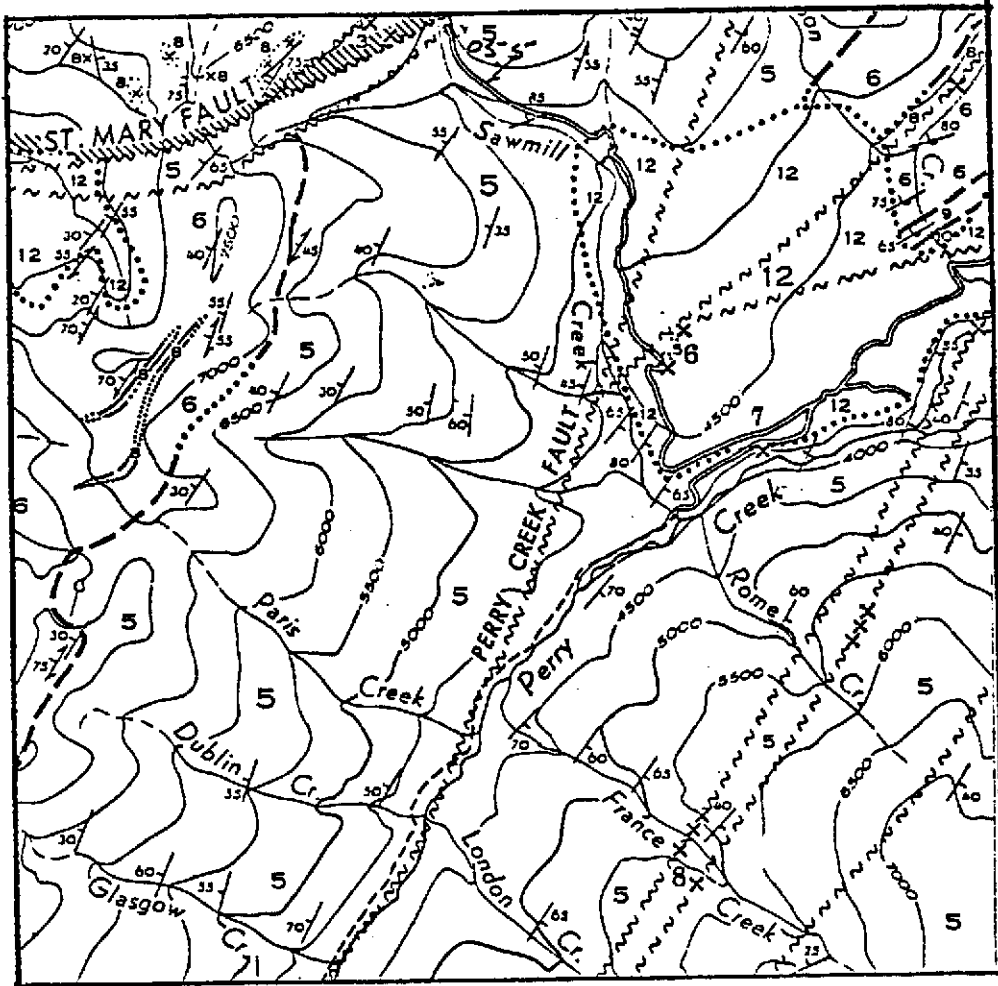


FIGURE 3
REGIONAL GEOLOGY
(AFTER LEECH - 1957)
PERRY CREEK AREA
METERS



5.20 Local Geology

The claim areas which were mapped(see Figure 4) are characterized by greenish phylonites, altered andesites and quartzites. The quartzites are typically light grey and may be banded or laminated.

Rocks in the area(phylonites) exhibit schistosity which is more or less concordant with the strike of the Perry Creek fault, with an average schistosity of approximately 190/060W.

Quartz veining with minor pyrite in a green phylonite was observed on the crown grants in the south part of the claim area. Other minor quartz stringers and disseminated pyrite are present in many of the outcrops which were observed.

6.0 GEOCHEMISTRY

A total of 337 soil/stream sediment samples were taken by personnel from Montgomery Consultants and Meridian Resources Limited. Meridian Resources Limited took a number of rock samples as well (see Figure 4).

Soil samples taken by Montgomery Consultants Limited were located on chain and compass lines and their locations were marked with orange flagging.

An arithmetic histogram was plotted(see Figure 5) and from this histogram an anomalous threshold of 50 P.P.B. gold was chosen. Ten samples were above this threshold.

Further work should be carried out in the area of the anomalous samples, since significant gold mineralization might only show up in one sample, and yet be quite significant.

Further work might take the form of trenching and further rock/silt/soil sampling.

Arithmetic Histogram

Figure 5

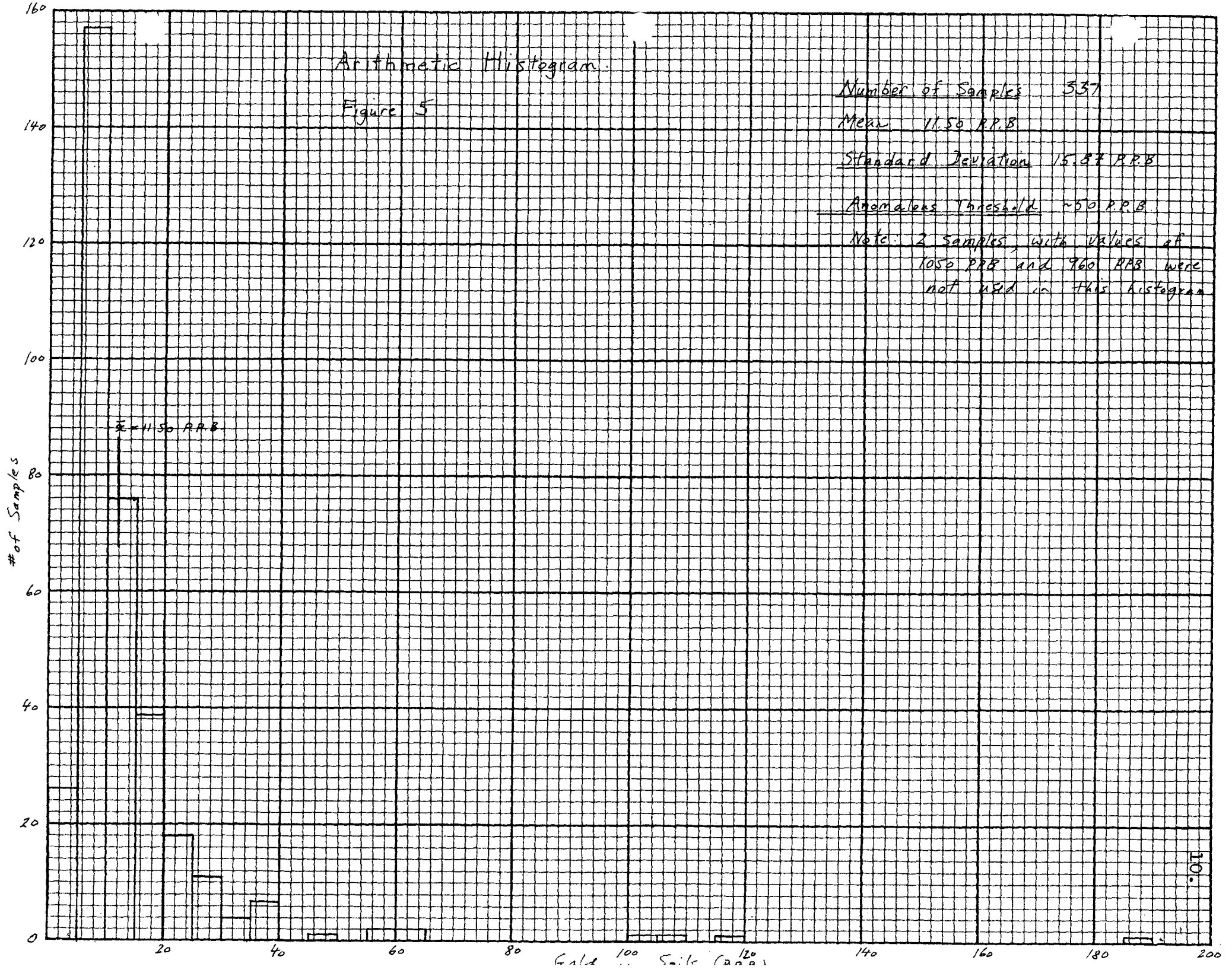
Number of Samples 337

Mean 11.50 P.P.B

Standard Deviation 15.87 P.P.B

Anomalous Threshold ~50 P.P.B

Note: 2 samples, with values of 1050 P.P.B and 960 P.P.B were not used in this histogram



7.0 COST STATEMENT

The statement of costs which follows has been broken down into two periods so that this report may be used to justify Mineral Exploration Incentive Grants on the property, both before and after November 21, 1978.

1.) COSTS INCURRED BEFORE NOVEMBER 21st, 1978.

a) Professional fees and wages:

Name	Dates Worked	Rate	Amount
J. H. Montgomery	June 21-23	180.00	540.00
J. Wolf	"	100.00	300.00
J. Love	"	"	300.00
R. W. Hughes	"	"	300.00
S. Barker	Nov. 5-19	50.00	750.00
S. Berryman	"	"	750.00
H. Madeisky	Nov. 4-16	80.00	1040.00
D. F. Symonds	Nov. 1($\frac{1}{4}$), 2($\frac{1}{4}$), 3($\frac{1}{2}$), 4($\frac{1}{4}$), 5($\frac{1}{4}$), 7($\frac{1}{4}$), 8($\frac{1}{4}$), 16($\frac{1}{4}$), 17-19(3), 20($\frac{1}{2}$), 21($\frac{1}{2}$)	150.00	975.00

937.50

SUB-TOTAL \$4955.00

b) Transportation:

i) Truck rental, fuel, parking	\$717.16
ii) Airfares	\$121.00
iii) Miscellaneous (taxis etc.)	<u>\$28.00</u>

SUB-TOTAL \$966.16

c) Accomodation, Meals, Telephone

SUB-TOTAL \$1385.05

d) Assays

SUB-TOTAL \$350.00e) Camp upplies, office supplies SUB-TOTAL \$185.43TOTAL (BEFORE NOV. 21/78) --- \$7,592.64

2.) COSTS INCURRED AFTER NOVEMBER 21st, 1978.

a) Professional fees and wages:

Name	Dates Worked	Rate	Amount
S. Friesen (draftsman)	various	\$6.50/hr.	143.00
D. F. Symonds	Jan.9-12,15,16	150.00	900.00

SUB-TOTAL \$1043.00b) Assays SUB-TOTAL \$1258.40c) Telephone SUB-TOTAL \$15.08d) Reproduction SUB-TOTAL \$28.58TOTAL(AFTER NOV.21/78) ----- \$2,345.06

TOTAL VALUE OF THIS REPORT FOR ASSESSMENT

PURPOSES: \$9,937.70

APPENDIX I

COMP#

Montgomery Consultants

GEOCHEMICAL ANALYSIS DATA SHEET

File No. 8-581

PROJECT No.: Cranbrook

MIN - EN Laboratories Ltd.

DATE: Nov. 29,

705 WEST 15th ST., NORTH VANCOUVER, B.C. V7M 1T2
PHONE (604) 980-5814

1978.

ATTENTION:

Sample Number	Mo ppm	Cu ppm	Pb ppm	Zn ppm	Ni ppm	Co ppm	Ag ppm	Fe ppm	Hg ppb	As ppm	Mn ppm	Au ppb				
6	10	15	20	25	30	35	40	45	50	55	60	65	70	75	80	
81	86	90	95	100	105	110	115	120	125	130	135	140	145	150	155	160
HM78-1				(40 mesh)			.					< 5				
2							.					5				
3							.					5				
4							.					10				
5							.					5				
6							.					5				
7							.					5				
8							.					< 5				
9							.					10				
10							.					5				
11							.					15				
12							.					60				
13							.					5				
14							.					35				
15				(20 mesh)			.					10				
16				(20 mesh)			.					10				
17				(40 mesh)			.					5				
18				(20 mesh)			.					25				
19							.					< 5				
20							.					< 5				
21							.					10				
22							.					25				
23							.					10				
24							.					10				
25							.					15				
26							.					25				
27							.					10				
28							.					5				
29							.					< 5				
HM78-30				(20 mesh)			.					10				

CERTIFIED BY

COMP/

Montgomery Consultants

GEOCHEMICAL ANALYSIS DATA SHEET

No. 8-581

PROJECT No.: Cranbrook

MIN - EN Laboratories Ltd.

DATE: Nov. 29,

705 WEST 15th ST., NORTH VANCOUVER, B.C. V7M 1T2
PHONE (604) 980-5814

1978.

ATTENTION:

Sample Number	Mo ppm	Cu ppm	Pb ppm	Zn ppm	Ni ppm	Co ppm	Ag ppm	Fe ppm	Hg ppb	As ppm	Mn ppm	Au ppb				
6	10	15	20	25	30	35	40	45	50	55	60	65	70	75	80	
81	86	90	95	100	105	110	115	120	125	130	135	140	145	150	155	160
HM7831												10				
32												10				
33												5				
34												5				
35												10				
36												15				
37												15				
38												10				
39												15				
40												4.5				
41												18.5				
42												20				
43												10				
44												10				
45												60				
46												5				
46A												5				
47												4.5				
48												5				
49												5				
50												15				
51												4.5				
52												5				
53												4.5				
54												5				
55												5				
56												4.5				
57												10				
58												100				
HM7859												10				

CERTIFIED BY

[Handwritten signature]

PROJECT No.: **Cranbrook**

MIN - EN Laboratories Ltd.

DATE: **Nov. 29,**

705 WEST 15th ST., NORTH VANCOUVER, B.C. V7M 1T2
PHONE (604) 980-5814

ATTENTION:

1978.

Sample Number	Mo ppm	Cu ppm	Pb ppm	Zn ppm	Ni ppm	Co ppm	Ag ppm	Fe ppm	Hg ppb	As ppm	Mn ppm	Au ppb				
81	86	90	95	100	105	110	115	120	125	130	135	140	145	150	155	160
HM7860								•					5			
61								•					5			
62								•					10			
63								•					5			
64								•					5			
64A						(20 mesh)		•					10			
65								•					20			
66								•					5			
67								•					5			
68								•					10			
69								•					5			
70								•					5			
71								•					10			
72								•					15			
73								•					5			
74								•					5			
75								•					20			
76								•					15			
77								•					5			
78								•					10			
79								•					5			
80								•					5			
81								•					5			
82								•					5			
83								•					5			
84								•					5			
85								•					10			
86								•					5			
87								•					5			
HM7888								•					5			

[Handwritten signature]

COMP/

Montgomery Consultants

GEOCHEMICAL ANALYSIS DATA SHEET

File No. 8-581

PROJECT No.: Cranbrook

MIN - EN Laboratories Ltd.

DATE: Nov. 29,

705 WEST 15th ST., NORTH VANCOUVER, B.C. V7M 1T2
PHONE (604) 980-5814

1978.

ATTENTION:

Sample Number	Mo ppm	Cu ppm	Pb ppm	Zn ppm	Ni ppm	Co ppm	Ag ppm	Fe ppm	Hg ppb	As ppm	Mn ppm	Au ppb				
6	10	15	20	25	30	35	40	45	50	55	60	65	70	75	80	
81	86	90	95	100	105	110	115	120	125	130	135	140	145	150	155	160
HM78-89												5				
90												10				
91												10				
92												5				
93					(20 mesh)							10				
94					(20 mesh)							5				
95					(20 mesh)							55				
96					(40 mesh)							5				
97					(40 mesh)							15				
98					(20 mesh)							30				
99					(20 mesh)							35				
100					(20 mesh)							25				
101					(20 mesh)							15				
102					(40 mesh)							20				
103					(40 mesh)							15				
104												5				
105												5				
106												25				
107												5				
108												<5				
109												5				
110												<5				
111												<5				
112												5				
112A												<5				
113												5				
114												<5				
115												10				
116												5				
HM78-117												5				

CERTIFIED BY

[Handwritten signature]

COMP/

Montgomery Consultants

GEOCHEMICAL ANALYSIS DATA SHEET

No. 8-581

PROJECT No.: Cranbrook

MIN - EN Laboratories Ltd.

DATE: Nov. 29,

705 WEST 15th ST., NORTH VANCOUVER, B.C. V7M 1T2
PHONE (604) 980-5814

ATTENTION:

1978.

Sample Number	Mo ppm	Cu ppm	Pb ppm	Zn ppm	Ni ppm	Co ppm	Ag ppm	Fe ppm	Hg ppb	As ppm	Mn ppm	Au ppb				
81	86	90	95	100	105	110	115	120	125	130	135	140	145	150	155	160
HM78-11.8								•					10			
119								•					5			
120								•					5			
121								•					5			
122								•					5			
123								•					5			
124								•					10			
125								•					15			
126								•					10			
127								•					15			
128								•					5			
129								•					10			
130								•					5			
131								•					15			
132								•					15			
133								•					5			
134								•					10			
135								•					10			
136								•					5			
137								•					5			
138								•					15			
139								•					15			
140								•					15			
141								•					15			
142								•					15			
143								•					10			
144								•					20			
145								•					20			
146								•					10			
HM78-14.7								•					5			

CERTIFIED BY

[Handwritten signature]

COMP/

Montgomery Consultants

GEOCHEMICAL ANALYSIS DATA SHEET

No. 8-581

PROJECT No.: Cranbrook

MIN - EN Laboratories Ltd.

DATE: Nov. 29,

705 WEST 15th ST., NORTH VANCOUVER, B.C. V7M 1T2
PHONE (604) 980-5814

1978.

ATTENTION:

Sample Number	Mo ppm	Cu ppm	Pb ppm	Zn ppm	Ni ppm	Co ppm	Ag ppm	Fe ppm	Hg ppb	As ppm	Mn ppm	Au ppb	70	75	80	
81	86	90	95	100	105	110	115	120	125	130	135	140	145	150	155	160
HM78-148												1.5				
149												5				
150												1.0				
151												< 5				
152												5				
153												1.0				
154												5				
155												1.5				
156												5				
157												< 5				
158												< 5				
159												5				
160												< 5				
161												5				
162												5				
163												5				
164												5				
165												5				
166												5				
167												< 5				
168												5				
169												1.0				
170												3.5				
171												5				
172												5				
173												5				
174												< 5				
175												1.0				
176												1.0				
HM78-177												5				

CERTIFIED BY

[Handwritten signature]

COMP/

Montgomery Consultants

GEOCHEMICAL ANALYSIS DATA SHEET

No. 8-581

PROJECT No.: Cranbrook

MIN - EN Laboratories Ltd.

DATE: Nov. 29,

705 WEST 15th ST., NORTH VANCOUVER, B.C. V7M 1T2
PHONE (604) 980-5814

1978.

ATTENTION:

Sample Number	6 Mo ppm	10 Cu ppm	15 Pb ppm	20 Zn ppm	25 Ni ppm	30 Co ppm	35 Ag ppm	40 Fe ppm	45 Hg ppb	50 As ppm	55 Mn ppm	60 Au ppb	65	70	75	80	
	81	86	90	95	100	105	110	115	120	125	130	135	140	145	150	155	160
HM78-17.8													4.5				
17.9													5				
18.0													1.5				
18.1													5				
18.2													1.5				
18.3													2.0				
18.4													5				
18.5													5.5				
18.6													5				
18.7													5				
18.8													5				
18.9													5				
19.0													1.0				
19.1													1.0				
19.2													1.0				
19.3													5				
19.4													1.0				
19.5													3.5				
19.6													1.5				
19.7													2.5				
19.8													1.0				
19.9													5				
20.0													5				
20.1													5				
20.2													4.5				
20.3													5				
20.4													5				
20.5													5				
20.6													1.0				
HM78-20.7													5				

CERTIFIED BY:

[Handwritten signature]

COMP/

Montgomery Consultants

GEOCHEMICAL ANALYSIS DATA SHEET

No. 8-581

PROJECT No.: Cranbrook

MIN - EN Laboratories Ltd.

DATE: Nov. 29,

705 WEST 15th ST., NORTH VANCOUVER, B.C. V7M 1T2
PHONE (604) 980-5814

1978.

ATTENTION:

Sample. Number	Mo ppm	Cu ppm	Pb ppm	Zn ppm	Ni ppm	Co ppm	Ag ppm	Fe ppm	Hg ppb	As ppm	Mn ppm	Au ppb				
81	86	90	95	100	105	110	115	120	125	130	135	140	145	150	155	160
HM78-208												35				
209												5				
210												5				
211												10				
212												5				
213												5				
214												5				
215												10				
216												5				
217												10				
218												5				
219												10				
220												20				
221												10				
222												5				
223				(40 mesh)								10				
224												45				
225												5				
226												10				
227												5				
228												no sample				
229												no sample				
230												10				
231												5				
232												15				
233												10				
234												5				
235												5				
236												5				
HM78-237												5				

CERTIFIED BY

[Handwritten signature]

COMP#

Montgomery Consultants

GEOCHEMICAL ANALYSIS DATA SHEET

No. 8-581

PROJECT No.: Cranbrook

MIN - EN Laboratories Ltd.

DATE: Nov. 29,

705 WEST 15th ST., NORTH VANCOUVER, B.C. V7M 1T2
PHONE (604) 980-5814

1978.

ATTENTION:

Sample. Number	Mo ppm	Cu ppm	Pb ppm	Zn ppm	Ni ppm	Co ppm	Ag ppm	Fe ppm	Hg ppb	As ppm	Mn ppm	Au ppb				
81	86	90	95	100	105	110	115	120	125	130	135	140	145	150	155	160
HM78-23.8								.				5				
23.9								.				5				
24.0								.				10				
24.1								.				25				
24.2								.				15				
24.3								.				20				
24.4								.				25				
24.5								.				15				
24.6								.				10				
24.7								.				5				
24.8								.				10.50				
24.9								.				5				
25.0								.				10				
25.1								.				10				
25.2								.				5				
25.3								.				5				
25.4								.				15				
25.5								.				15				
25.6								.				10				
25.7								.				10				
25.8								.				15				
25.9								.				10				
26.0								.				10				
26.1								.				10				
26.2								.				15				
26.3								.				20				
26.4								.				20				
26.5								.				10				
26.6								.				25				
HM78-26.7								.				15				

CERTIFIED BY

[Handwritten signature]

COMP/

Montgomery Consultants

GEOCHEMICAL ANALYSIS DATA SHEET

No. 8-581

PROJECT No.: Cranbrook

MIN - EN Laboratories Ltd.

DATE: Nov. 29,

705 WEST 15th ST., NORTH VANCOUVER, B.C. V7M 1T2
PHONE (604) 980-5814

1978.

ATTENTION:

6	10	15	20	25	30	35	40	45	50	55	60	65	70	75	80	
Sample. Number	Mo ppm	Cu ppm	Pb ppm	Zn ppm	Ni ppm	Co ppm	Ag ppm	Fe ppm	Hg ppb	As ppm	Mn ppm	Au ppb				
81	86	90	95	100	105	110	115	120	125	130	135	140	145	150	155	160
HM78-268								.					15			
269								.					35			
270								.					10			
271								.					35			
272								.					25			
273								.					25			
274								.					25			
275								.					20			
276								.					30			
277								.					30			
278								.					30			
279								.					10			
280								.					5			
281								.					10.5			
282								.					5			
283								.					5			
284								.					5			
HM78-285								.					115			
								.								
								.								
								.								
								.								
								.								
								.								
								.								
								.								
								.								
								.								
								.								
								.								
								.								
								.								

CERTIFIED BY: *[Signature]*

APPENDIX II



CHEMEX LABS LTD.

212 BROOKSBANK AVE.
 NORTH VANCOUVER, B.C.
 CANADA V7J 2C1
 TELEPHONE: 985-0648
 AREA CODE: 604
 TELEX: 043-52597

• ANALYTICAL CHEMISTS • GEOCHEMISTS • REGISTERED ASSAYERS

CERTIFICATE OF ASSAY

CERTIFICATE NO. 33192

TO: Meridian Resources Ltd.,
 706 - 675 W. Hastings St.,
 Vancouver, B.C.
 V6B 4K4
 ATTN:

INVOICE NO. 22454

RECEIVED October 24, 1977

ANALYSED October 28, 1977

*1 ppm = 0.0292 oz/ton.
 1 pph = 0.000292 oz/ton.*

SAMPLE NO. :	<i>ppb Gold.</i>	oz/ton Gold	oz/ton Silver	% Lead	% Zinc
100 A		<0.003	<0.01	<0.01	<0.01
#1		<0.003			
#2		<0.003			
#3		<0.003			
#4		<0.003			
#5		3.152			
#6		0.114			
#7		<0.003			
#8		0.038			
#9	<i>17.</i>	0.005			
#10		0.020			
#11	<i><10</i>	<0.003			
#12	<i><10</i>	<0.003			
#13	<i><10</i>	<0.003			
#14	<i><10</i>	<0.003			
#15		0.394			
#16	<i>△</i>	<0.003			
#17		0.020			



MEMBER
 CANADIAN TESTING
 ASSOCIATION

B. J. Swaine

REGISTERED ASSAYER, PROVINCE OF BRITISH COLUMBIA



CHEMEX LABS LTD.

212 BROOKSBANK AVE.
 NORTH VANCOUVER, B.C.
 CANADA V7J 2C1
 TELEPHONE: 985-0648
 AREA CODE: 604
 TELEX: 043-52597

• ANALYTICAL CHEMISTS • GEOCHEMISTS • REGISTERED ASSAYERS

CERTIFICATE OF ANALYSIS

TO: Meridian Resources Ltd.
 706 - 675 W. Hastings St.
 Vancouver, B.C.

CERTIFICATE NO. 42426
 INVOICE NO. 22534
 RECEIVED Oct. 24/77
 ANALYSED Nov. 2/77

ATTN:

SAMPLE NO. :	PPB Gold	PPM Silver	PPM Lead	PPM Zinc
1	< 10			
2	< 10			
3	< 10			
B - 1	< 10			
2	< 10			
3	< 10			
4	< 10			
5	< 10			
6	< 10			
7	< 10			
8	10			
9	20			
B - 10	< 10			
Sawmill 1	< 10			
2	10			
3	< 10			
4	20			
Saw. 5	< 10			
Allin 1	20			
2	10			
3	10			
Allin 4	< 10			
Price Vein 1N	10			
Price Vein 2S	< 10			
Price Vein 3	< 10			
1 M	< 10			
2 M	< 10			
3M	< 10			
4M	< 10			
Birdie "L" BL 1	< 10			
2	10			
3	< 10			
4	< 10			
5	< 10			
6	< 10			
7	10			
Birdie "L" BL 8	< 10			
BB 1	< 10	0.4	52	850
2	< 10	0.2	20	142
BB 3	< 10	0.1	24	255
STD.		4.8	38	126



MEMBER
 CANADIAN TESTING
 ASSOCIATION

CERTIFIED BY:



CHEMEX LABS LTD.

212 BROOKSBANK AVE.
 NORTH VANCOUVER, B.C.
 CANADA V7J 2C1
 TELEPHONE: 985-0648
 AREA CODE: 604
 TELEX: 043-52597

• ANALYTICAL CHEMISTS • GEOCHEMISTS • REGISTERED ASSAYERS

CERTIFICATE OF ANALYSIS

TO: Meridian Resources Ltd.,
 706 - 675 W. Hastings St.,
 Vancouver, B.C.

CERTIFICATE NO. 42427
 INVOICE NO. 22534
 RECEIVED Oct. 24/77
 ANALYSED Nov. 2/77

ATTN:

SAMPLE NO. :	PPB Gold	PPM Silver	PPM Lead	PPM Zinc
BB 4	< 10	0.1	26	138
5	< 10	0.1	28	260
6	< 10	0.4	50	1625
7	< 10	0.1	30	100
8	< 10	0.1	12	58
9	< 10	0.2	28	84
10	< 10	0.2	16	74
11	< 10	0.1	12	68
BB 12	< 10	0.2	18	64
L 1 A	< 10			
L 2 A	20			
L 3 A	< 10			
L 4 A	< 10			
Birdie 1S	< 10			
2S	10			
3S	< 10			
4S	< 10			
5S	< 10			
6S	10			
Birdie 7S	< 10			
Price Roat)				
1Y)-	< 10			
2Y	< 10			
3Y	< 10			
4Y	20			
Sourdough A	< 10			
Sourdough B	< 10			
Sourdough C	40			



MEMBER
 CANADIAN TESTING
 ASSOCIATION

CERTIFIED BY:



CHEMEX LABS LTD.

212 BROOKSBANK AVE.
 NORTH VANCOUVER, B.C.
 CANADA V7J 2C1
 TELEPHONE: 985-0648
 AREA CODE: 604
 TELEX: 043-52597

• ANALYTICAL CHEMISTS • GEOCHEMISTS • REGISTERED ASSAYERS

CERTIFICATE OF ANALYSIS

TO: Meridian Resources Ltd.
 706 - 675 W. Hastings St.
 Vancouver, B.C.

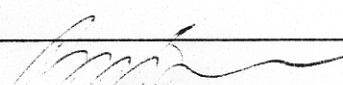
CERTIFICATE NO. 42346
 INVOICE NO. 22351
 RECEIVED Oct. 17/77
 ANALYSED Oct. 19/77

ATTN: R. Hughes

SAMPLE NO. :	PPB	Gold
#1	<10	- pit 500' N of camp wash cr.
#2	<10	Lower than road 2 mi W of stream site
#3	960	" " " " " "
#4	10	" " " " " "
<p>1 oz per ton $\frac{1}{24,000}$</p>		
<p>0.25 oz = $\frac{1}{240,000}$</p>		
<p>960 = 1 part per million = .024 of oz.</p>		
<p>1 oz = 40 P.P.M. 19 = 40,000 P.P.B.</p>		
<p>1,000,000 $\frac{1}{24,000,000}$</p>		

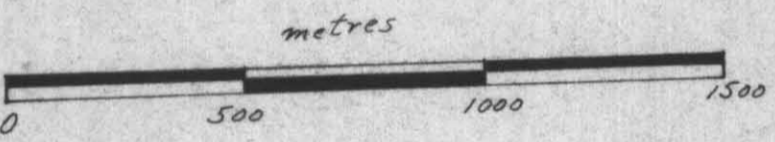


MEMBER
 CANADIAN TESTING
 ASSOCIATION

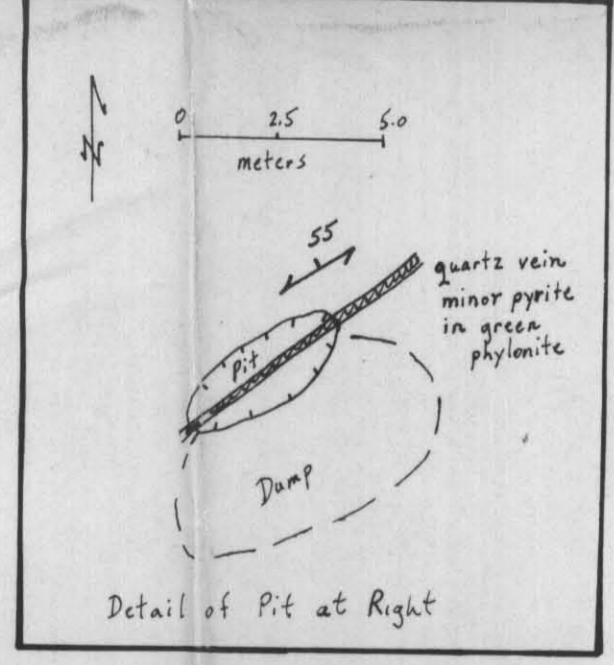
CERTIFIED BY: 

LEGEND

- ROAD
- TRAIL
- AIR PHOTO CENTRE
- CLAIM BOUNDARY
- TRENCH
- ADIT
- GEOLOGIC CONTACT - ROCK TYPE
- GEOCHEMICAL SOIL - SEDIMENT SAMPLES
- GOLD VALUES IN P.P.B.
- TAKEN BY M.C.L.
- TAKEN BY MERIDIAN RESOURCES LTD.
- NOTE: SOME ROCK ASSAYS IN OZ PER TON
- SCHISTOSITY



MONTGOMERY CONSULTANTS LIMITED DEC. 1, 1978.



MINERAL RESOURCES DIVISION
ASSESSMENT REPORT
7103
NO.

1103