

78. #516 = 7104

ASSESSMENT REPORT

PLACER SAMPLING & JADE BOULDER EVALUATION

PLACER LEASE 1711

Liard Mining Division

104I/7E

58 19'N 128 38'E

Owner & operator: Cry Lake Jade Mines Ltd.

Author: A.M. Homenuke, P.Eng.

Date: January 23, 1979

7104

CONTENTS

PART I. INTRODUCTORY NOTES

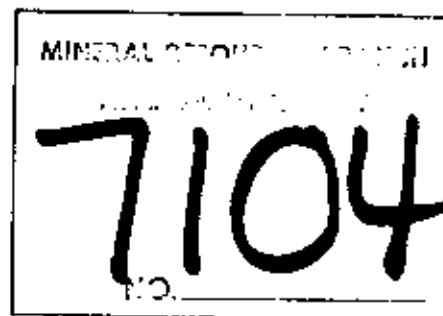
Location Map (Fig. 1)	1
Location and Access	2
Physical Features	2
Property	2
History	2
Economic History	2
Work Summary - 1978	3

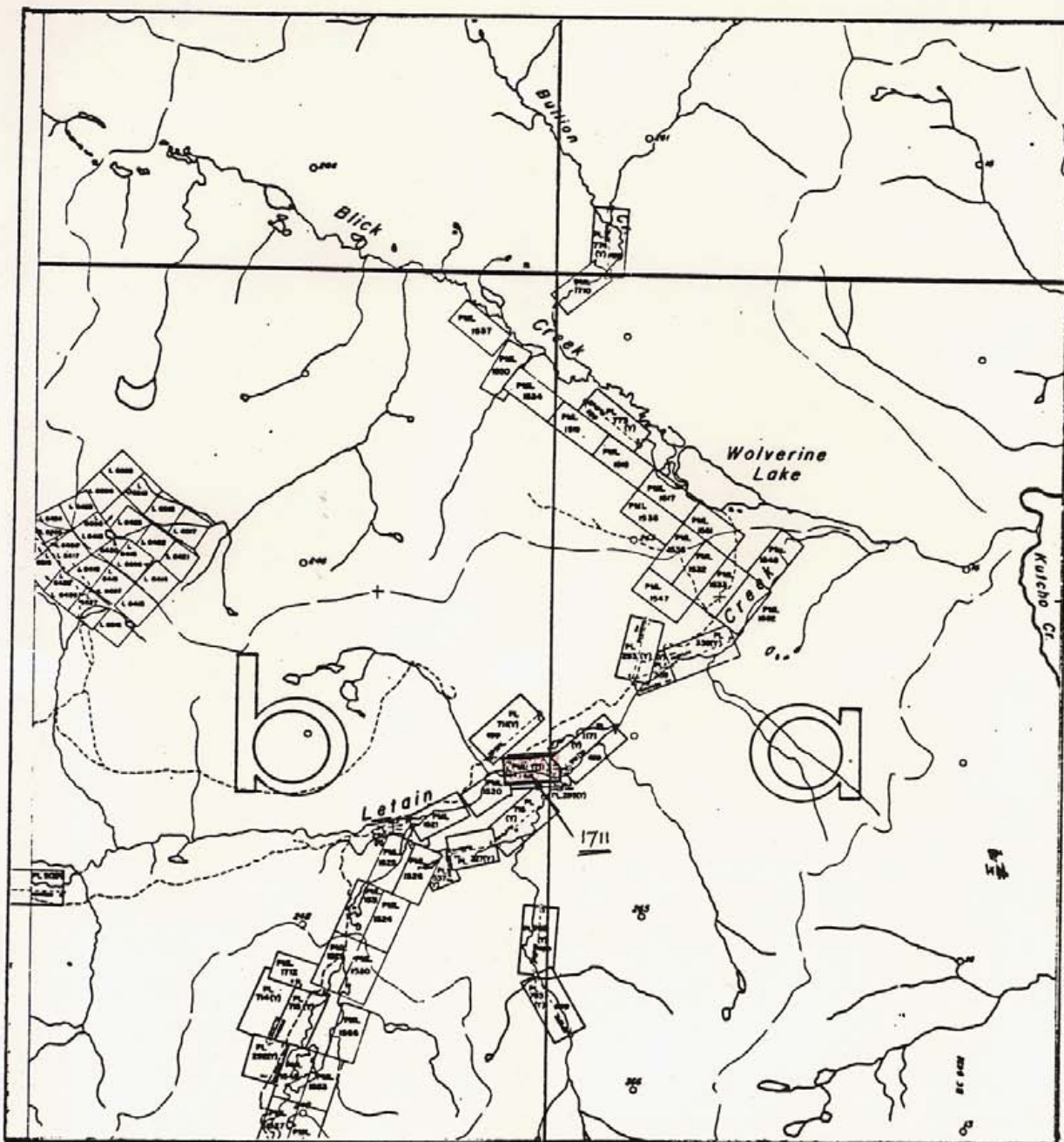
PART II. TECHNICAL DATA

Placer Sampling	3
Sample Description	3
Sample Locations (Fig. 2)	4
Analytical Procedure	5
Results	5
Examination of Jade Boulders	5

PART III. INTERPRETATION AND CONCLUSIONS

Placer Samples	6
Jade Boulders	6
ITEMIZED COST STATEMENT	7
CERTIFICATE OF QUALIFICATIONS	8





Part of P 104 I / 76



Kilometres



CRY LAKE JADE MINES LTD.
PLACER LEASE
1711
 LIARD MINING DIVISION
LOCATION MAP

PART I. INTRODUCTORY NOTES

Location and Access

Placer Lease 1711 is situated on Letain Creek 7.5 km east of the south end of Letain Lake, 500 m southwest of the Wolverine airstrip. (Fig. 1). Access is by air from Dease Lake, 80 km west, or Watson Lake, 200 km north. A cat trail from Dease Lake passes by the claim.

Access for work done in 1978 was by helicopter from the Cry Lake Jade camp at Kutcho Creek airstrip.

Physical Features

In the area of the claim, Letain Creek flows east along the south side of a relatively flat valley. South of the creek elevations increase rapidly towards a group of unnamed mountain peaks. Relief on the claim is less than 20 m and the elevation averages 1220 m.

The valley bottom is filled with fluvio-glacial gravels. There are several bedrock exposures along the creek.

Property

Placer Lease 1711 was located on October 20, 1974 by Robert Schumacher and the lease was issued on January 8, 1975. The lease has been extended to 1981. On January 5, 1976, all interest was transferred by agreement to Cry Lake Jade Mines Ltd. The claim is in the Liard Mining Division.

History

There is evidence in the form of cat work, old sluice boxes, etc. of an attempt at placer gold mining on the claim. These workings appear to be at least 20 years old. The claim was relocated in 1974 for its potential as a jade placer.

Economic History

Both gold and jade are known to occur in the gravels on the claim. The alluvial material was derived by glaciation and erosion of the surrounding mountains. Jade is presently being mined from these mountains. At Wheaton

Creek, 25 km northwest, gold is presently being recovered from placer operations in gravels derived from areas of similar geology.

Bedrock is relatively shallow, 5 - 15 m, and placer mining would not be extremely difficult; however, environmental problems would have to be considered. Good quality jade has been produced from boulders on other leases along Letain Creek.

Work Summary - 1978

The presence of gold on the claim was confirmed by hand-panning in 1977. It was decided in 1978 to carry out a limited program of gravel sampling to obtain further information. The claim was also re-examined for its jade potential (September 4, 1978).

Eight samples were taken for gold and platinum analysis. This work was done on September 26, 1978.

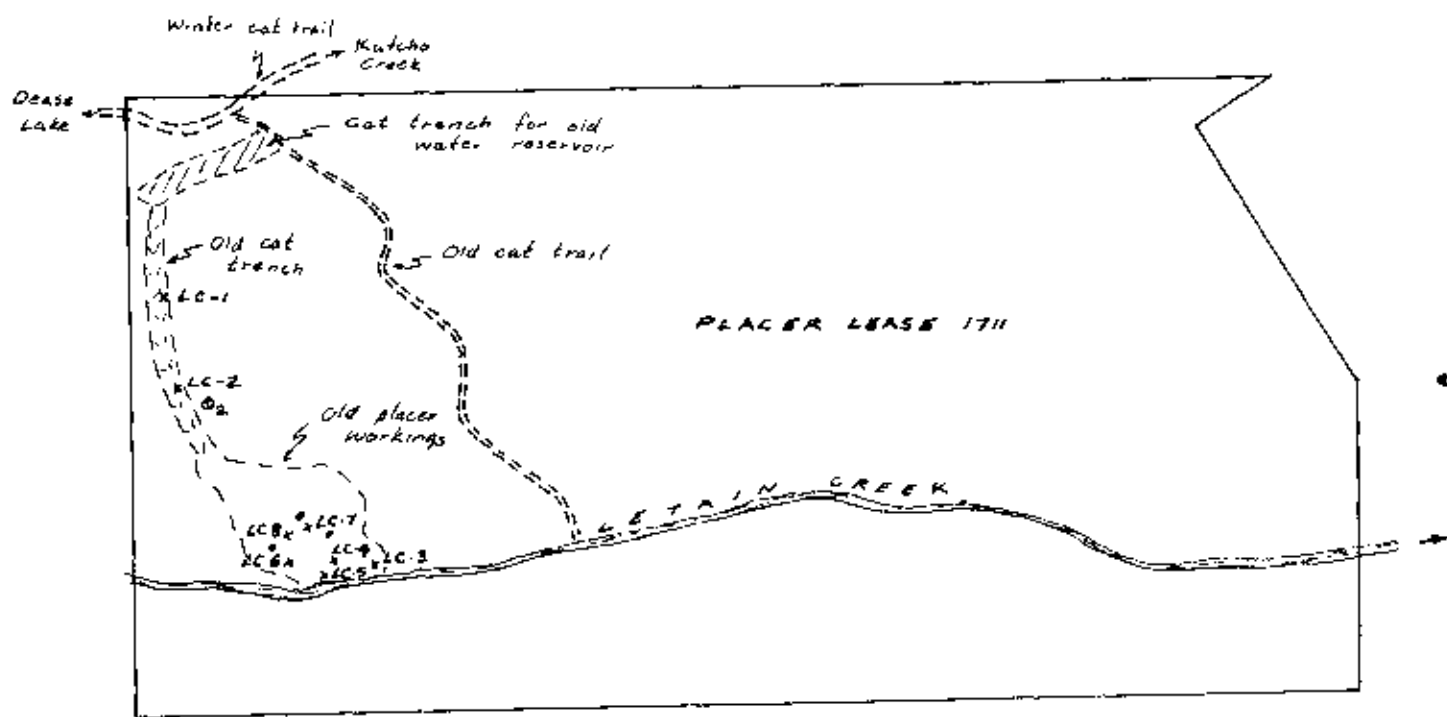
PART II. TECHNICAL DATA

Placer Sampling

8 samples of gravels were taken to obtain information regarding gold values and to determine the presence or absence of platinum. The samples were taken in the area of the old workings as these provided the best exposures. The sample locations are shown on Fig. 2. Pebbles larger than about 1 cm. were excluded from the samples. Sample weight averaged about 2000 grams.

Sample Description

Number	Notes
LC-1	Relatively coarse gravel approximately 15 m. above creek level, 2 m below surface in cat trench
LC-2	Same as LC-1, except 10 m above creek level
LC-3	Fine sand from creek bank 1 m above creek level
LC-4	Sand around boulder near creek level
LC-5	Same as LC-4
LC-6	Scraped from bedrock on area cleared during previous placer operations. Higher percentage of silt and clay. Bedrock



References - P104 I/7E
 @ C Airphoto 5427-264

- x Sample site
- LC-1 Sample number
- Jade boulder
- ⊙ Claim post

CRY LAKE JADE MINES LTD.

PLACER LEASE 1711
 VARD MINING DIVISION, B.C.

SAMPLE LOCATIONS

PREPARED BY: A.M. HOMENYUK, P.Eng
 TRI-CON MINING LTD
 JAN. 1978

FIG. 2

is schistose metasediments with steeply dipping foliation

- LC-7 Same as LC-6. Pan of this material yielded largest flake of gold seen by writer from this claim. (0.8 mm)
- LC-8 Same area as LC-6 & 7, but from fine sandy material near bedrock rather than right on bedrock.

Analytical Procedure

The samples were taken to Chemex Labs Ltd. of North Vancouver to be assayed for gold and platinum. Each sample was weighed and sieved to -20 mesh; the "heavies" were collected by heavy media separation and this material was fire assayed. The lab reported the results in milligrams. The assayer indicated by phone that these results represented the total metal content of the samples.

Results

The following table is a reproduction of a portion of the assay certificate

SAMPLE NO.	mg Pt	mg Au	gm Total wt.	gm +20 mesh	Seps wt. gm	Wt Fireassay
LC-1	<0.001	0.002	2351	1911	6.3	6.3
2	<0.001	<0.001	2204	1549	5.7	5.7
3	<0.001	0.001	1949	1387	46.6	14.558
4	<0.001	<0.001	2460	2170	42.3	14.558
5	<0.001	0.003	2453	2105	49.7	14.558
6	<0.001	<0.001	1863	1494	7.1	7.1
7	<0.001	<0.001	1858	1495	3.7	3.7
LC-8	<0.001	0.002	1721	1330	16.4	14.558

Examination of Jade Boulders

Three jade boulders totalling about 10 tons were seen in the area of the old placer workings. Surficially, they did not appear to be of any value, but sometimes drilling can prove otherwise. Several boulders were noted in a small canyon at the eastern end of the claim. They have not been examined up close.

PART III. INTERPRETATION AND CONCLUSIONS

Placer Samples

Four of the eight gravel samples showed the presence of gold in the range of .001 to .003 mg. Considering the given sample weights these values are of no economic significance. Platinum, if present at all, was below detection limits.

Jade Boulders

The jade boulders examined appeared to have been dug out during placer operations. This indicates that many more boulders may be present in the gravels. The feasibility of any exploration for this type of boulder will depend heavily on environmental consideration.

ITEMIZED COST STATEMENT

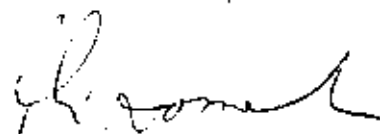
A. Homenuke, P. Eng. ½ day Sept. 4, ½ day Sept. 26 @ \$200/day	\$ 200.00
Food and Accomodation 1 day @ \$25/day	25.00
Hiller 12E Helicopter (from camp at Kutcho Creek airstrip) 2 round trips of 40 min. @ \$185/hr and fuel	250.00
Assaying	360.00
Report Preparation	200.00
	<hr/>
	\$1,035.00

CERTIFICATE OF QUALIFICATIONS

I, ALEXANDER M. HOMENUKE, DO HEREBY CERTIFY:

1. THAT I am a member in good standing of the Association of Professional Engineers of British Columbia.
2. THAT I received the Degree of Bachelor of Science in Geological Engineering from the Colorado School of Mines in 1974.
3. THAT I received a Diploma of Technology in Mining from the B.C. Institute of Technology in 1969.
4. THAT I have been employed in various aspects of mineral exploration for 10 years and am presently employed by Tri-Con Mining Ltd. of 213 - 475 Howe Street, Vancouver, B.C.
5. THAT I presently reside at #1 - 2025 Sandalwood Crescent, Abbotsford, B.C.
6. THAT this report is based on work supervised or conducted by myself.

Dated at Vancouver, B.C., this 23rd day of January 1979.



A.M. HOMENUKE, P. Eng.
Geological Engineer