

Assessment Report

on the

Sles 1 Claim

New Westminster Mining Division

on behalf of

AQUARIUS RESOURCES LIMITED

Report by  
G. H. Giroux, P. Eng.  
December, 1978



**Cochrane Consultants Limited**  
4882 Delta St., Delta, B.C. V4K 2T8 946-9221  
Geotechnical Consulting / Exploration Services

geology  
geophysics  
geochemist



1.0 INTRODUCTION

---

This report is written for Aquarius Resources Limited on the Sles 1 mineral claim situated on Slesse Creek in the New Westminster Mining Division, British Columbia.

The report describes a reconnaissance geochemical survey completed on the property between September 15 and September 16, 1978 under the direction of J. Stewart.

The analysis of geochemical results and the writing of this report was done by the author at the request of Aquarius Resources Limited.

7107



2.0 SUMMARY AND CONCLUSIONS

---

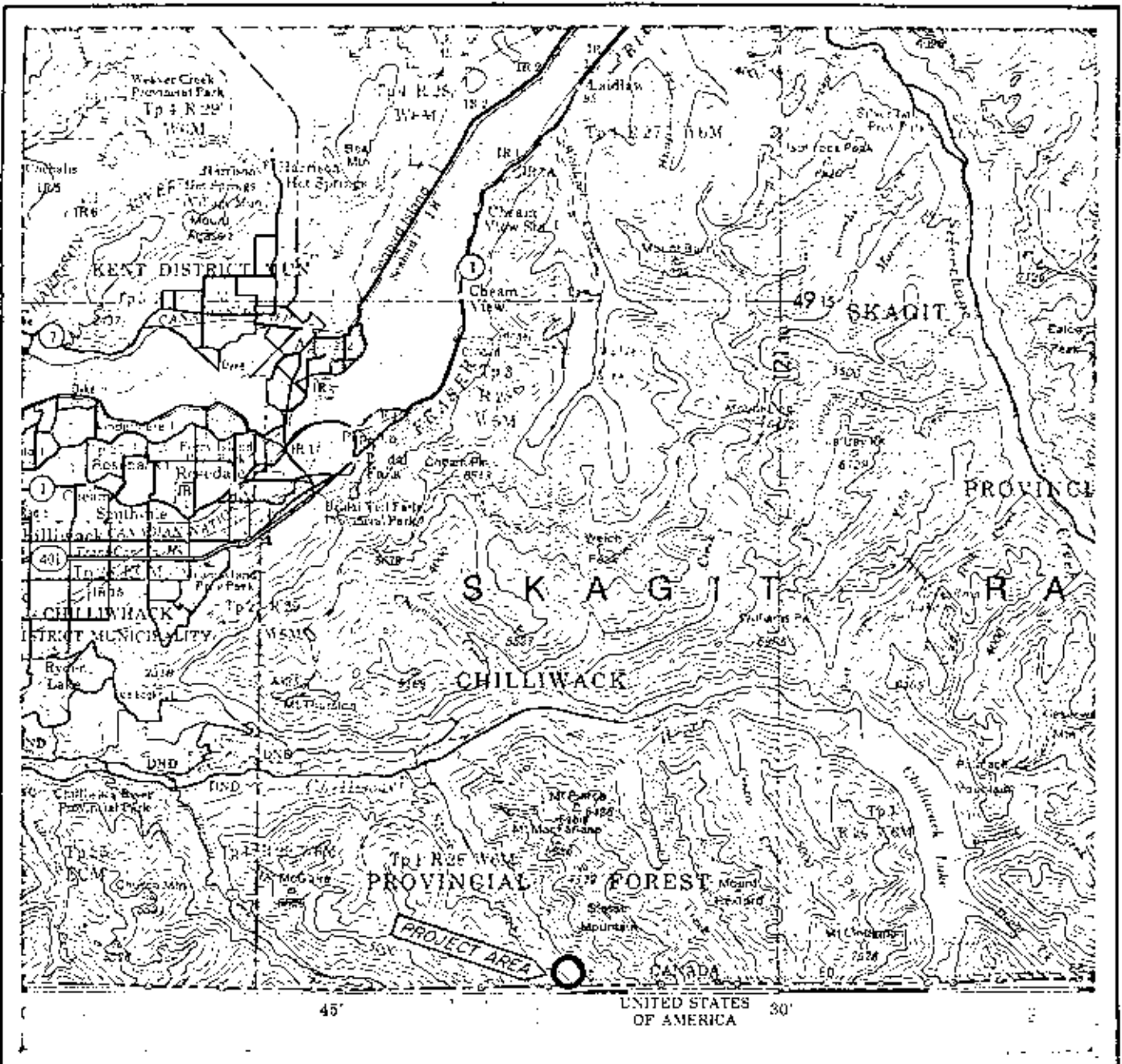
Aquarius Resources Limited holds title to Sles 1 mineral claim located on Slesse Creek, New Westminster Mining Division, British Columbia.


The mixture of Chilliwack volcanics with older metamorphics that form a northeast trending belt in contact with the mid-tertiary Chilliwack Pluton was selected as a possible gold environment.

During the period of September 15 to September 16, 1978 a crew of 4 samplers collected 194 soil samples at 25 meter spacing along roads and cut line.

The samples were analyzed for gold and results plotted. One sample of 35 ppb was considered anomalous.





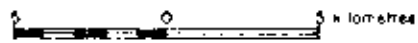


**AQUARIUS RESOURCES LTD.**

Sles 1 Claim                      Slesse Creek, B.C.  
 New Westminster Mining Division      92H/4E

**LOCATION MAP**                      Figure 1

Scale: 1 to 250 000 or 1 inch equals approx. 4 miles



Coch and Consultants Limited  
 4877 Delta St. Delta, B.C. V9A 2T9 644-4371

### 3.0 LOCATION AND ACCESS

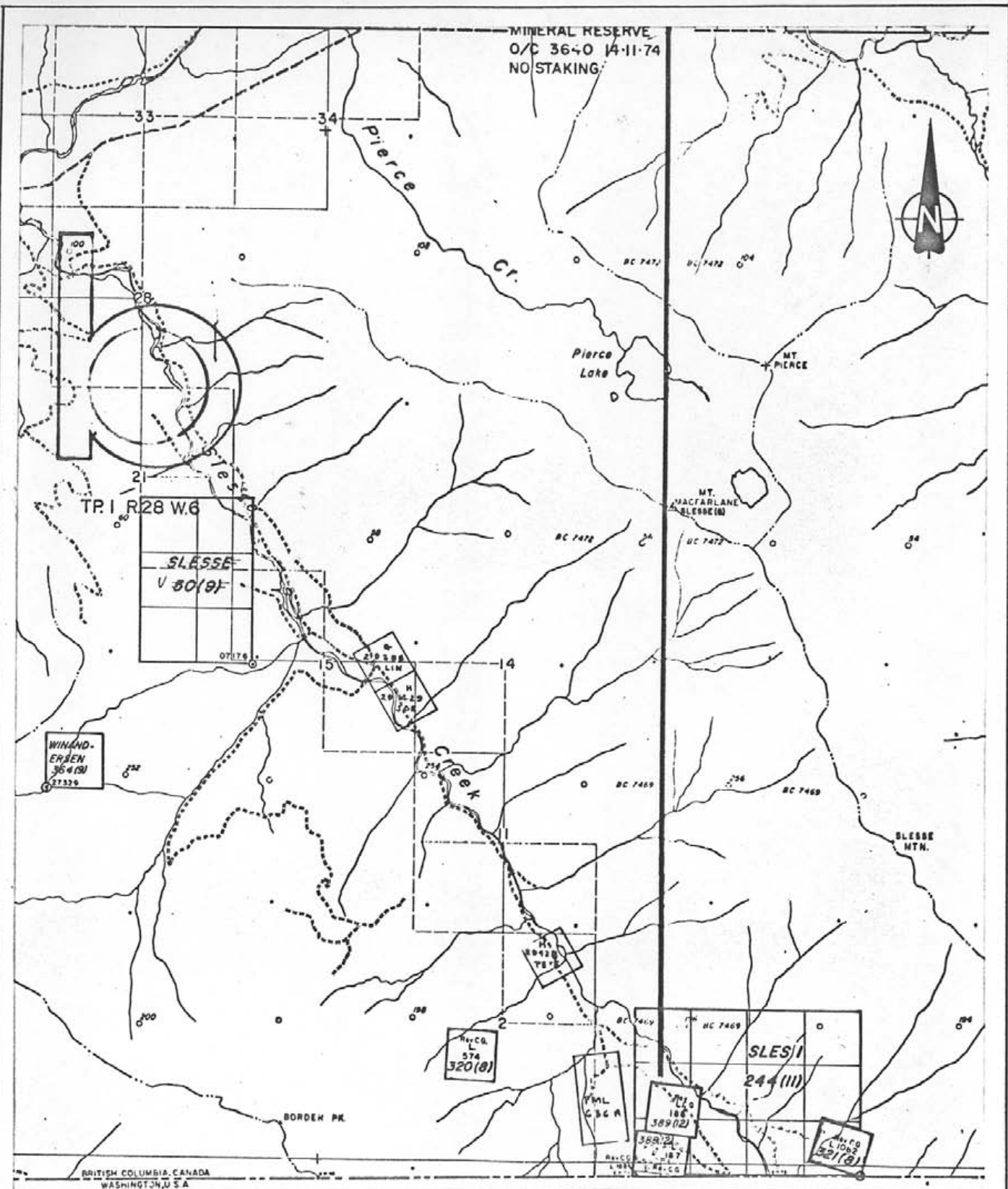
---

The Sles 1 claim is located on Slesse Creek, 30 kilometers south-east of Chilliwack, British Columbia. The southern boundary of the Sles 1 claim is on the Canada - United States Border. (see figure 1).

The N.T.S. map reference is 92H/4E; Latitude  $49^{\circ}00'N$ ; Longitude  $121^{\circ}37'W$ .

Access to the property is by 5 km of paved road from Sardis on the Trans Canada Highway (401) south to Vedder Crossing then by 20 km of gravel road east of Slesse Creek and finally 10 km of dirt road south on Slesse Creek.





AQUARIUS RESOURCES LTD.

Sles 1 Claim  
 New Westminster Mining Division  
 CLAIM MAP

Slesse Creek, B.C.  
 92H/4 E.  
 Figure 2

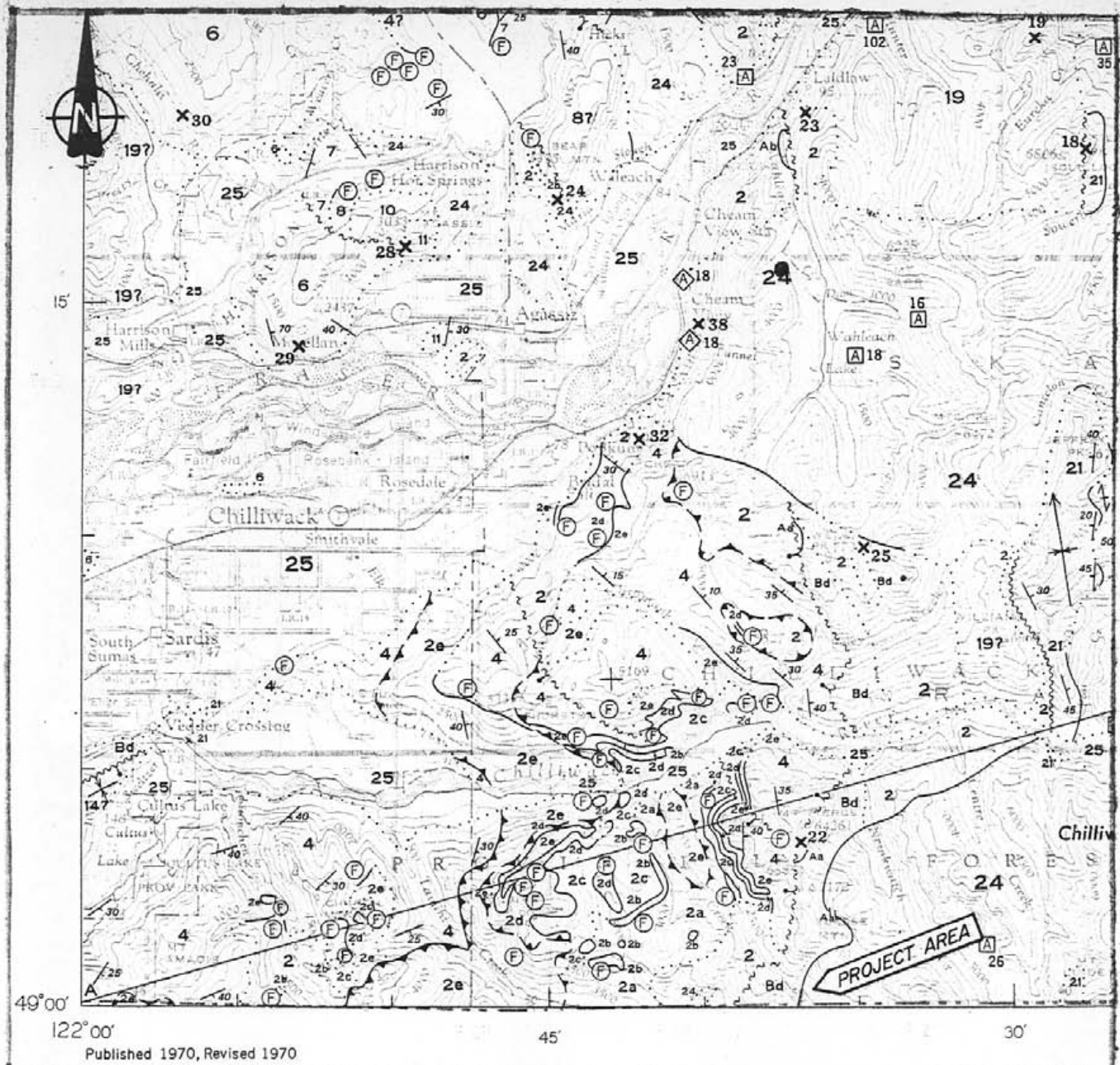
Scale: 1:50,000

0 1 2 miles

0 1 2 kilometres

B.A.C./Jan. 79

Cochrane Consultants Limited  
 4882 Duna St., Duna, B.C. V4K 2T8 945-9221



**LEGEND**

CENOZOIC TERTIARY Miocene & Earlier

24 Granodiorite, quartz diorite.

PALEOZOIC PENNSYLVANIAN & PERMIAN

2 Basic volcanic rocks & pelites. Chilliwack Group.

ULTRAMAFIC ROCK

Aa Serpentinite, serpetinized peridotite.

SHIST, AMPHIBOLITE & PHYLITE

Bd Amphibolite, hornblendite, quartz diorite.

From G.S.C. Map 12 - 1969

B.A.C., Jan. '79



**AQUARIUS RESOURCES LTD.**

Sles 1 Claim Slesse Creek, B.C.  
 New Westminster Mining Division 92H/4 E.  
 REGIONAL GEOLOGY Figure 3

Scale: 1 to 250000 or 1 inch equals approx. 4 miles



Cochrane Consultants Limited  
 4982 Delta St., Delta, B.C. V4K 2T8 946-9221

#### 4.0 CLAIM INFORMATION

---

The Sles 1 mineral claim consists of 12 units as shown on figure 2. The claim appears to be staked in accordance with British Columbia regulations. The following table summarizes the claim information:

CLAIM	RECORD NO.	EXPIRY DATE
Sles 1	244	* Nov. 9, 1980

\* after assessment credits

#### 5.0 REGIONAL GEOLOGY

---

The geology of the claim area has been mapped by J.W.H. Monger (1969) (see figure 3). Basic volcanics and pelites of the Lower Pennsylvanian to Lower Permian Chilliwack Group are imbricated with a group of metamorphic rocks of varying textures and compositions on a north-northeast trending belt. Intruding these Paleozoic rocks to the east are the granodiorites to quartz diorites of the mid-Tertiary Chilliwack Pluton.





**AQUARIUS RESOURCES LTD.**

Sigs 1 Claim                      Sigs Creek B.C.  
 New Westminster Mining Division      92H/4E  
**ARITHMETIC HISTOGRAM**  
**FOR GOLD**                      Figure 5  
 G.F.S. OR '78

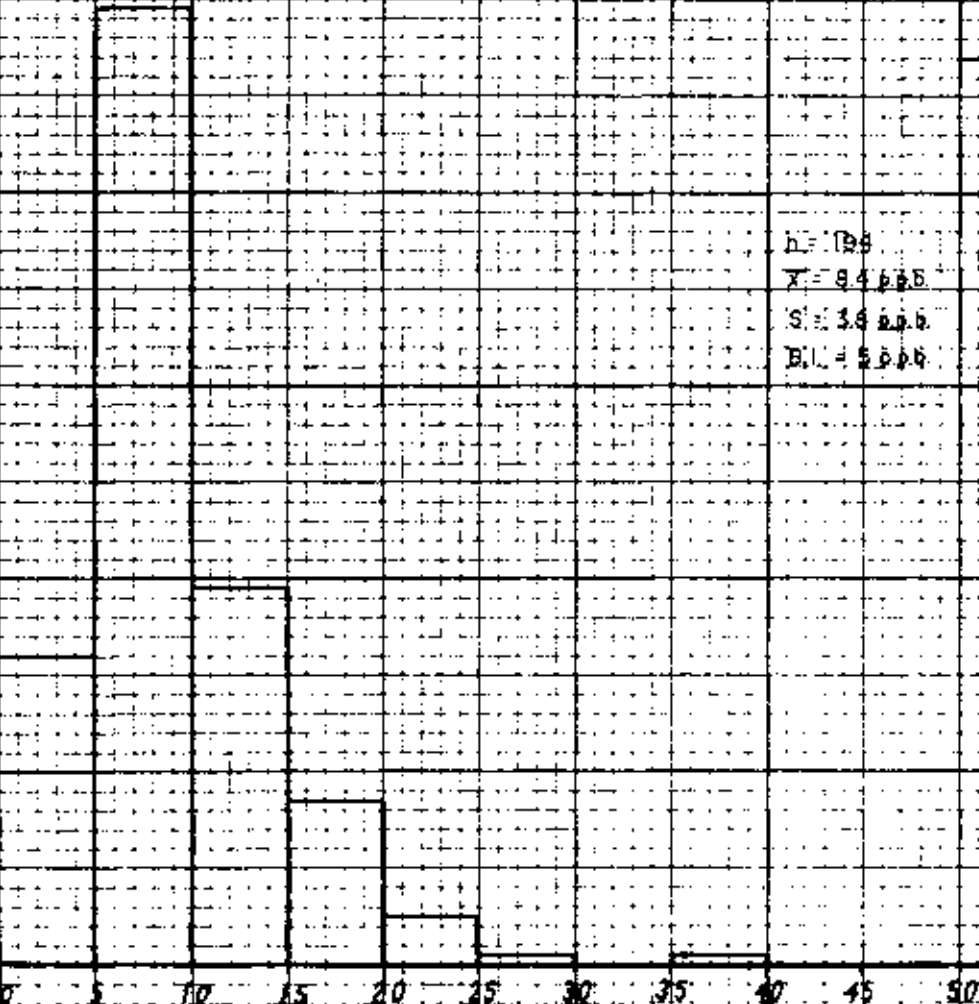
NUMBER OF SAMPLES

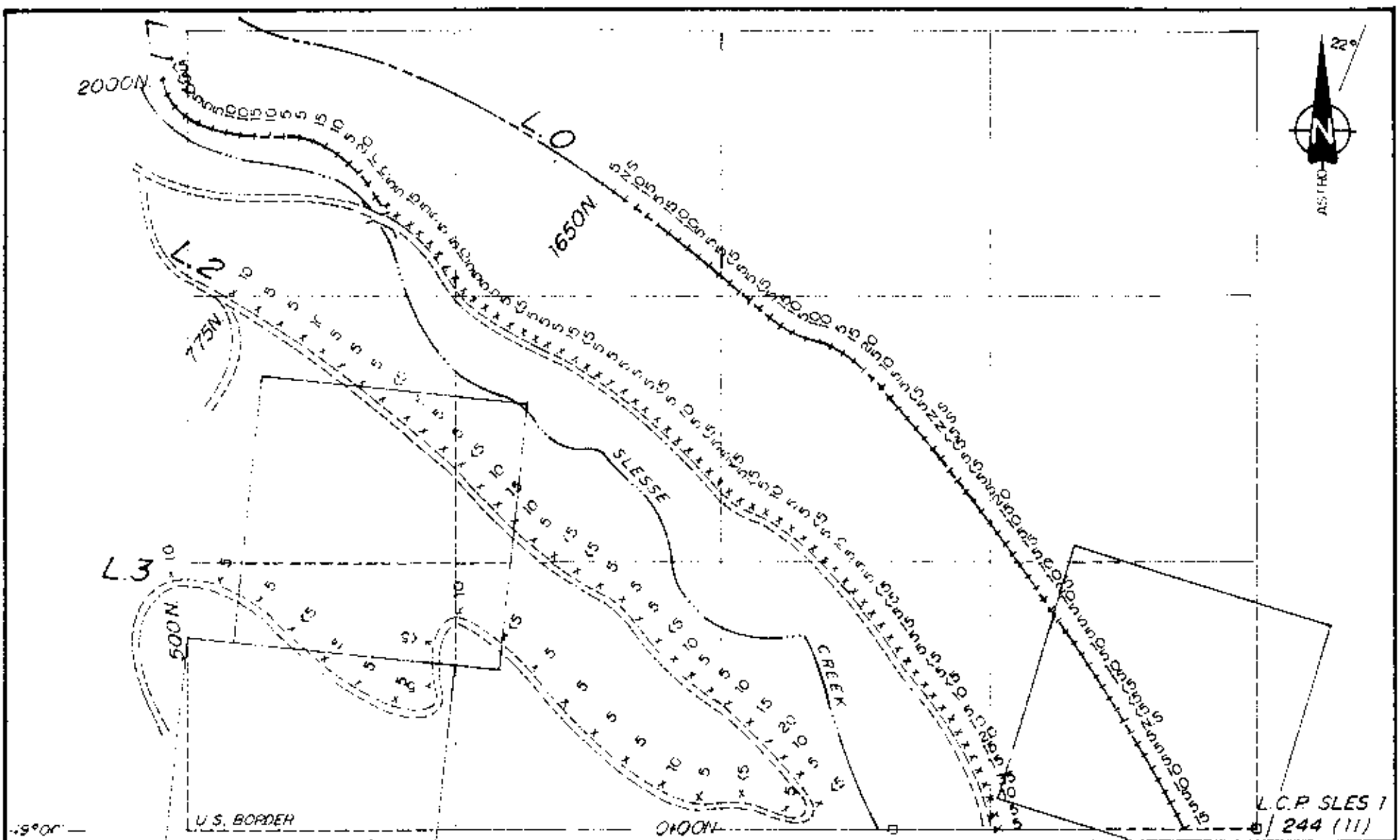
100  
80  
60  
40  
20  
0

0    5    10    15    20    25    30    35    40    45    50

GOLD IN P.P.B.

n = 198  
 $\bar{x}$  = 9.4666  
 S = 3.6222  
 E.C. = 5.506





1:10,000 0 50 100 200 300 400 500 meters

BASE MAP FROM FIELD SKETCH BY A. B. SEP-78 P.K.C. OCT-78



- x Soil Sample
- Claim Line
- o Located Post
- - - Cut Line & Station



AQUARIUS RESOURCES LTD.

Slesse Creek, B.C.  
 New Westminster Mining Division 92H/4E.  
 Slesse 1 Claim  
 GEOCHEMICAL PLAN (Au, ppb.) Figure 4

D.P. Egan

7.0 COST STATEMENT

---

PERSONNEL:

Supervisor: Sept. 15 and 16, 1978;  
2 days @ \$100/day ..... \$ 200.00

Prospector: Sept. 15, 1978; 1 day  
@ \$90/day ..... \$ 90.00

Field Person:  
Sept. 15 and 16, 1978;  
2 days @ \$70/day ..... \$ 140.00

Helper: Sept. 15 and 16, 1978;  
2 days @ \$60/day ..... \$ 120.00

Geochemical Analysis

194 soil samples @ \$4.40/sample ..... \$ 853.60

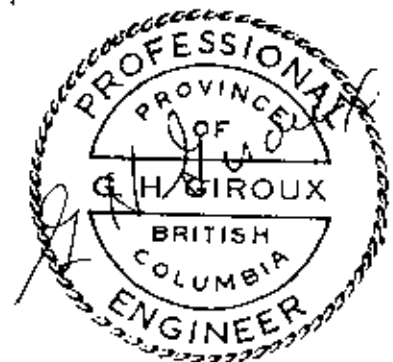
Food & Accommodation:

7 man days @ \$20/day ..... \$ 140.00

Mileage: 80 miles @ 25¢/mi ..... \$ 20.00

Drafting: 26 hours @ \$12.00/hour ..... \$ 312.00

Total..... \$ 1,875.60



6.0 GEOCHEMICAL SURVEY

---

Soil samples were taken at 25 meter intervals along roads and cut line. 194 samples were assayed for gold. (see figure 4).

The gold samples range from the detection limit of  $<5$  ppb to 35 ppb with an arithmetic mean of 8.4 ppb and a standard deviation of 3.8. The arithmetic histogram (see figure 5) shows the samples form a normal distribution with one sample of 35 ppb considered anomalous. (ppb = parts per billion.)

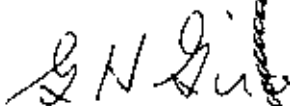



8.0 CERTIFICATE

---

I Gary H. Giroux of 982 Broadview Dr., North Vancouver, British Columbia, do hereby certify that:

1. I am a consulting geological Engineer with an office at 211-850 West Hastings Street, Vancouver, British Columbia.
2. I am a graduate of the University of British Columbia (1970) with a degree in Geological Engineering. (B.A. Sc.)
3. I have practiced my profession continuously since graduation.
4. I have no interest, either direct or indirect in the properties of securities of Aquarius Resources Ltd.; nor do I expect to receive any such interest.
5. I am a member in good standing of the Association of Professional Engineers of the province of British Columbia.

  
G. H. Giroux, P. Eng.  
982 Broadview Dr.,  
North Vancouver, B. C.  
December, 1978.



The seal is circular with a double-line border. The text 'PROFESSIONAL' is at the top, 'PROVINCE OF' is in the upper middle, 'G. H. GIROUX' is in the center, 'BRITISH COLUMBIA' is in the lower middle, and 'ENGINEER' is at the bottom.

