

'78-# 525-# 7156.

THE DAISIE PROPERTY

CHILKO LAKE, B.C.

DAISIE 1-29 CLAIMS

CLINTON M.D.

BRITISH COLUMBIA

Latitude: $51^{\circ} - 11' N$

Longitude: $124^{\circ} - 13' W$

92N/1E

For:

GORDON RESOURCES LIMITED
#100 McLaren Centre
4240 Manor Street
Burnaby, B.C.

By:

ALLEN GEOLOGICAL ENGINEERING LTD.
202 - 2025 Bellevue
West Vancouver, B.C. V7V 1B9

March 1, 1979.

7156

CONTENTS

INTRODUCTION..... 1.
LOCATION..... 2.
TOPOGRAPHY..... 2.
PROPERTY..... 2.
HISTORY..... 3.
GEOLOGY..... 3.
DIAMOND DRILLING..... 4.
SUMMARY - ASSAYS..... 6.
SUMMARY AND CONCLUSIONS..... 7.
RECOMMENDATIONS..... 8.
REFERENCES..... 10.
STATEMENT..... 11.

CERTIFICATE

CONSENT

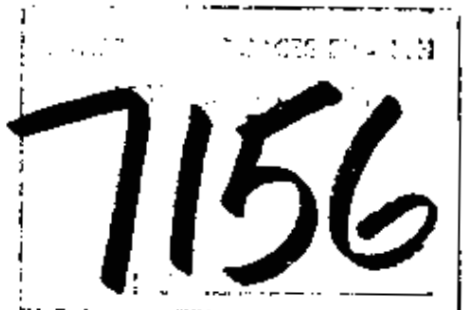
MAPS

A. Location

- 1. Mineral Claims and Topography
- 2. Geology
- 3. Diamond Drill Holes (1978)

Assay Sheets

* * * * *



REPORT
ON THE
DAISIE PROPERTY
CHILKO LAKE, B.C.

INTRODUCTION

The Daisie group of located mineral claims were examined by the writer in May and October 1978.

The property is located in the Clinton Mining Division, in southwest British Columbia at the head of Franklyn Arm of Chilko Lake.

Over the past 20 years the copper, molybdenum, tungsten mineral showings have been partially exposed by stripping and trenching and recently core drilling in the vicinity of the trenches has provided underground information.

Twenty-two EX holes were drilled for a total of 705 metres. Core recovery was about 90%. The core is stored at the camp on Franklyn Arm near the property.

The purpose of this report is to provide a description of the property, details of the 1978 drilling programme, and recommendations for the continued exploration of the Daisie mineral claims.



GORDON Resources Ltd (H.R.L.)

LOCATION MAP

SCALE: 1" = 136 MI.

Drawn by	Date
Checked by	Org no. A

ALLFN GEOLOGICAL
ENGINEERING LTD

LOCATION

The Daisie 1-29 contiguous mineral claims extend from the head of Franklyn Arm of Chilko Lake southwesterly for about 4 kilometres between Deschamps and Good Hope creeks.

Chilko Lake is in southwestern British Columbia 30 kilometres southwest of Williams Lake.

Latitude $124^{\circ}-11'$ and longitude $51^{\circ}-12'-30''$ intersect close to the northeast corner of the property.

Access is by float equipped aircraft or boat from a fishing camp on the north end of Chilko Lake. The company camp is located on the south shore of Franklyn Arm, a short distance from the property.

TOPOGRAPHY

Chilko Lake is located at an elevation of 1,200 metres above sea level in a ruggedly mountainous area.

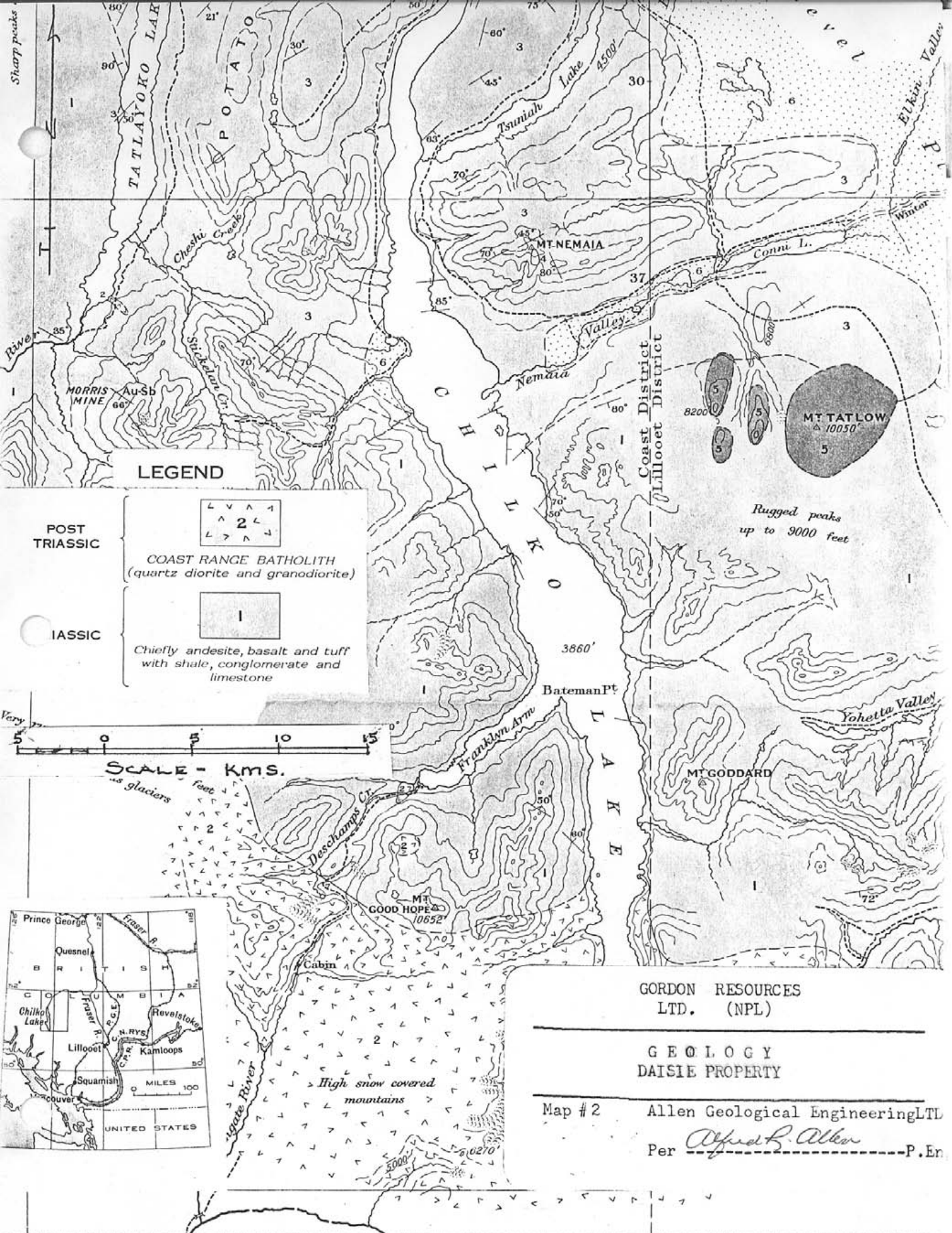
The Daisie claims extend from the west end of Franklyn Arm westerly up Deschamps valley and the steep slopes, as shown on the accompanying topographic map #1.

PROPERTY

The following mineral claims are held by location by Gordon Resources Limited.

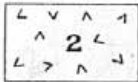
Daisie 1-8 inclusive
Daisie 9-29 inclusive

These are shown on the B.C. Ministry of Mines and Petroleum Resources Map 92N/1E accompanying this report.



LEGEND

POST TRIASSIC



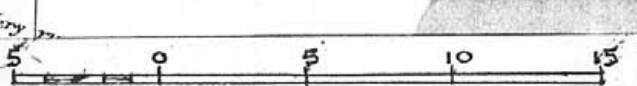
COAST RANGE BATHOLITH
(quartz diorite and granodiorite)

TRIASSIC



Chiefly andesite, basalt and tuff
with shale, conglomerate and
limestone

SCALE - Kms.



GORDON RESOURCES
LTD. (NPL)

GEOLOGY
DAISIE PROPERTY

Map # 2 Allen Geological Engineering LTL
Per *Alfred B. Allen* P. En.

HISTORY

Mr. Alec Ducharme and Mr. Thomas J. Gordon conducted exploratory work over the Daisie claims area for a number of years before the property was acquired by Gordon Resources Limited.

In 1924 the area was mapped by the Geological Survey of Canada as reported in Summary Report 1924 Pt. A by Victor Dolmage.

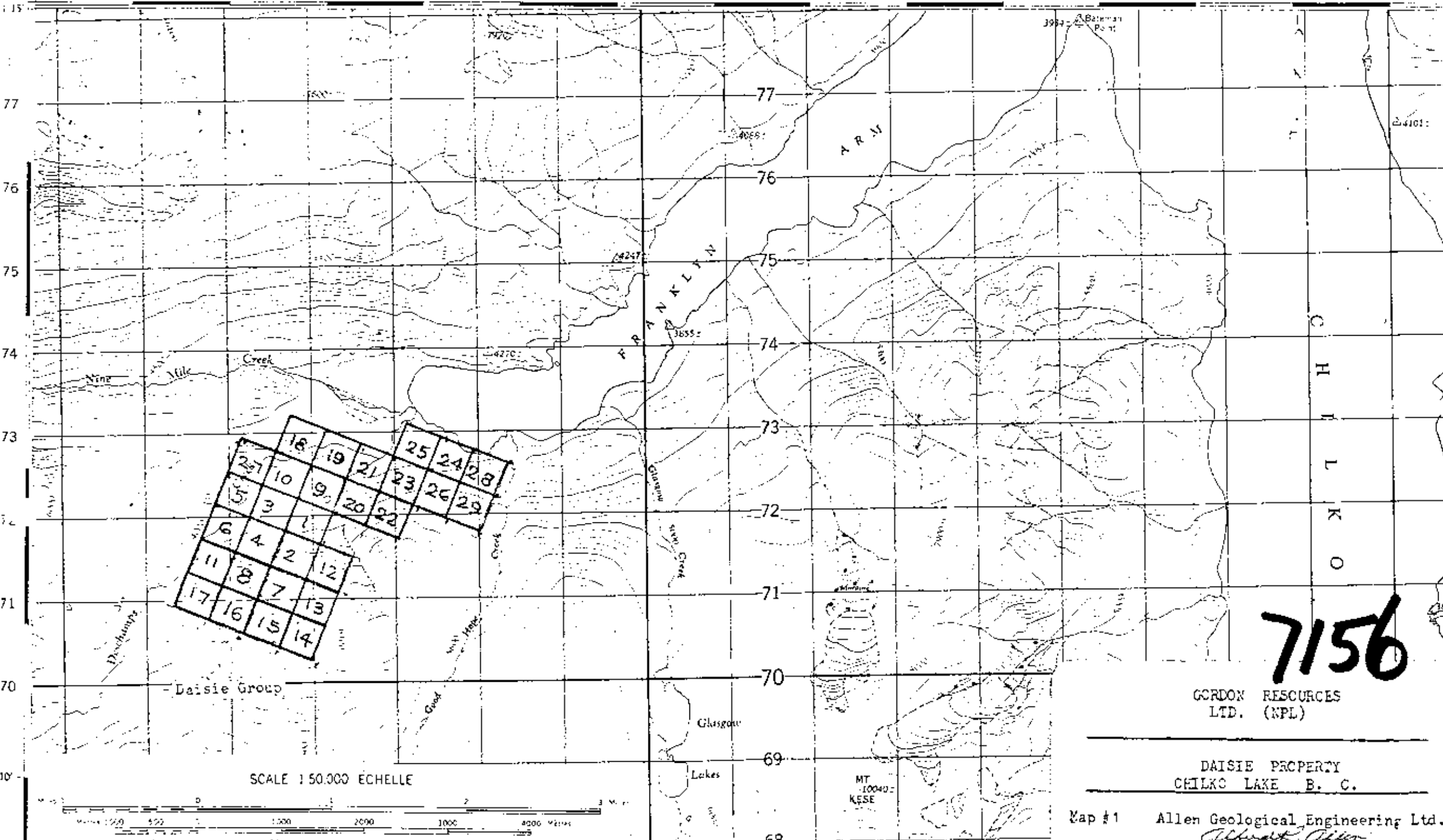
Over the years examinations and some exploratory work has been carried out by Cominco, Anaconda, Highland Bell and others.

GEOLOGY

Preliminary mapping indicates that the area is largely underlain by Triassic volcanics composed of massive basalt, lesser andesite with thick interbeds of rhyolite and andesite. Included are bands of sandstone, argillite, limestone and conglomerate. The regional strike is northwesterly.

The southern portion of the area is underlain by Coast Range intrusives. Two exposures of granodiorite, quartz diorite and diorite are exposed on the Daisie claims.

Partially exposed zones of replacement-type mineral deposits occur in and near a 60 to 120 metre band of limestone and skarn flanked by limestone, tuff, andesite and agglomerate with irregular diorite intrusives.



7156

GORDON RESOURCES LTD. (NPL)

DAISIE PROPERTY CHILKAT LAKES B. C.

Allen Geological Engineering Ltd.

Alfred Allen

The mineralized zones discovered to date contain, in order of abundance; chalcopyrite, pyrite, pyrrhotite, scheelite and molybdenite. Included are low values in gold, silver, zinc, lead, nickel and cobalt, in highly metamorphosed wall rocks.

Details of the open cuts have been included in previous reports.

DIAMOND DRILLING

Diamond drilling was conducted by Gordon Resources Limited intermittently on the Daisie property from May to November 1978.

Using company equipment J. Gabbs of Vancouver contracted to do the drilling. Assistance was provided by two to four company employees during the season. The writer inspected the work during two visits in May and October.

A gasoline powered EX standard drill was flown onto the property and 22 holes were drilled from 13 to 77 metres to a total of 705 metres. Core recovery was in excess of 90%.

The core is stored at the camp on Franklyn Arm near the property.

The following is a list of the holes completed.

DIAMOND DRILLING

DDH No.	Length Metres	Dir Deg's	Dip Deg's	Location Grid			Notes
				N	S	W	
<u>May/78</u>							
A	28	--	90	177	234		Limestone & skarn
B	21	--	90	155	220		" "
C	13	111	45	161	217		" "
D	32	--	90	178	161		" "
E	19	246	70	165	158		Silicified limestone&skarn
F	27	246	70	170	228		" " " pyrrhotite & chalcopyrite
G	30	--	90	183	357		skarn, limestone, diorite pyrite,pyrrhotite, chalco-pyrite
H	25	--	90		20 88		7m skarn, 18m altered volcanics & limestone
I	14	21	45		24 89		skarn, minor sulphides
J	30	--	90		13 67		6mskarn, 2.5 m altered diorite
K	23	156	70		21 64		12m skarn 11m altered diorite
L	24	--	90		16 52		24m skarn
M	14	21	45		10 47		skarn
N	38	--	90		39 15		limestone & skarn
<u>Oct. Nov./78</u>							
1A	77	--	90		38 13		limestone & skarn
1A3	28	111	70		38 13		" "
1B	56	--	90		47 38		altered diorite
1C	65	21	70		15 58		27m skarn 38m altered diorite
1D	52	21	70		6 69		40m skarn 12m altered rock
1E	40	336	70		12 71		30m skarn 10m altered diorite
1F	49	246	70		28 84		limestone & skarn 7m altered diorite
1G	28	156	45		29 80		15m skarn
<u>Total:</u>							13m altered diorite
	705						

SUMMARY - ASSAYS

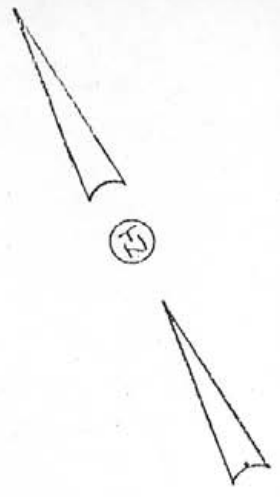
DDH No.	From-to Metres	Au Oz/T	Ag Oz/T	Cu %	MoS ₂ %	WO ₃ %
<u>May/78</u>						
F	12-18	.001	.025	.030	.001	Tr
G	0-4.6	.005	Tr	.020	.001	.005
H	0-22.8	.001	.025	.080	.003	.011
I	0-13.7	.005	.076	.076	.001	.004
J	0-30.0	.001	.030	.160	.006	.033
K	0-22.8	.004	.124	.091	.008	.010
LL	0-24	.002	.095	.061	.037	.093
M	0-14	.001	.133	.283	.166	.473
N	0-1.5	.001	.150	.020	.020	.050
N	1.5-38	.001	.070	.025	.022	.165
<u>Average</u>		.002	.070	.085	.026	.083
<u>Oct./78</u>						
1-C	0-39.6			.128	.198	.350
1-D	0-39.6			.270	.076	.195
1-E	0-30.5			.394	.073	.175
1-F	0-39.6	.002	.120	.416	.003	.026
1-G	0-15.4			.098	.001	.126
<u>Average</u>		.002	.120	.261	.007	.174

Note:

The assayer advises that assays for 1-C to 1-G are reported as Mo and W on his sheets 1-4, certificate No K 1844, Nov. 23, 1978, but the actual results are for MoS₂ and WO₃.

Note:

A semi-quantitative spectragraphic analysis was made from C-1, 11, 12 & 13 Core Samples.



G

A
F
B
G

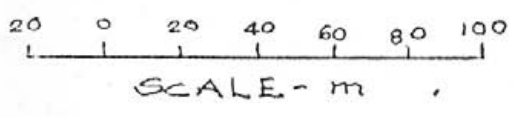
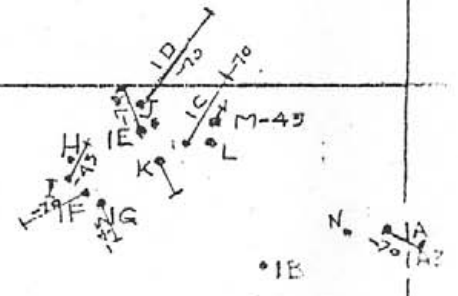
D
E

DAISIE 3

DAISIE 4

DAISIE 1

DAISIE 2



GORDON RESOURCES LTD. (NPL)
 DAISIE PROPERTY
 Diamond Drill Holes, 1978
 Map #3 - Allen Geological Engineering Ltd
 Per Alfred R. Allen P. Eng.
 3/1/79

SUMMARY AND CONCLUSIONS

The Daisie 1-19 claims are located in southwestern British Columbia south of Franklyn Arm on Chilko Lake in the Clinton Mining Division.

The area is mountainous and access is by water, using float equipped aircraft or by boat from the fishing camp on the north end of Chilko Lake.

Near the contact with a stock of Coast Range, granitic intrusives and Triassic limestone, tuff, andesite, basalt, agglomerate, sandstone, conglomerate, argillite and skarn, copper mineralization occurs with lesser tungsten, molybdenum, gold and silver in a gangue of wollastonite, garnet, quartz, calcite, chlorite and altered country rock.

Trenching and stripping has exposed this intermittent mineralization over a 3,000-foot length.

It is concluded that the claims area is geologically favourable for the occurrence of replacement type mineral deposits and extensive exploratory investigations are warranted thereon.

RECOMMENDATIONS

The following exploratory programme is recommended on the
Daisie property:

	<u>Estimated Costs</u>
1. Construct a road, suitable for 4-w-d vehicles from Franklyn Arm onto and over the Daisie claims area,	\$ 50,000.00
2. Conduct a detailed prospecting programme over the property,	2,500.00
3. By chain and Brunton compass, establish a 60m by 120m grid over most of the claims area, and subsequently where warranted, grid to 20m by 20m over small areas. Estimated for 50 line kms on main grid and 5 kms on detailed areas at \$180.00 per line km,	10,000.00
4. Where required strip and trench to extend mineral exposures and expose anomalous areas for mapping and sampling,	15,000.00
5. Conduct geological and EM-VLF surveys over the grid area. Estimated at \$200.00 per line km,	10,000.00
6. Conduct a geochemical survey over selected portions of the grid area,	10,000.00
7. Core drill 10 to 30 holes to test the indicated mineralized zones. A total of 2,000m at an estimated cost of \$90.00 per m,	180,000.00
8. Office, administration, transportation and supervision,	42,500.00
9. Contingencies,	<u>30,000.00</u>
Total estimated costs,	\$350,000.00

If the prospecting, grid, geophysical and geochemical surveys are conducted concurrently, starting in May, it is considered likely that the full programme may be completed by November.

Respectfully submitted,

ALLEN GEOLOGICAL ENGINEERING LIMITED

Per Alfred R. Allen P. Eng.

Alfred R. Allen

March 1, 1979.

West Vancouver, B.C.

REFERENCES

- Dolmage, Victor, G.S.C. Sum Report 1924 Pt A
- Cominco, Field Sketch Maps June 1963
- Gordon, T.J., Field Reports & Sketch Maps 1926-1973
- Allen, A.R., Report on the Daisie Group Nov. 24, 1975
- Allen, A.R., Supplementary Report, March 7, 1977

* * * * *

STATEMENTDIAMOND DRILLINGDAISIE PROPERTYAPRIL - NOVEMBER 1978

J. Gabbs, Diamond drill contractor, Vancouver, B.C.	\$ 32,905.49
<u>Field Crew;</u>	
J. Sperling, Vancouver, B.C.	
M. Fleming, Merritt, B.C.	
V. Murdock, Vancouver, B.C.	
K. Sorenson, Vancouver, B.C.	
E. Oswald, Vancouver, B/C.	
P. Tedolde, Vancouver, B.C.	3,750.00
Alfred R. Allen, P.Eng., West Vancouver, B.C.	4,974.17
Transportation - Vancouver, Williams Lake, to property	4,752.83
Truck and Equipment rentals	529.53
Hotel and Food	2,729.18
Assaying	4,161.00
	<hr/>
	\$53,802.20

Allen Geological Engineering Limited

2025 BELLEVUE AVENUE
WEST VANCOUVER, B.C. V7V 1B9

Telephone
604-926-4785

CERTIFICATE

March 1, 1979.

I, Alfred R. Allen, certify that:

I am a graduate of the University of British Columbia and hold the following degrees therefrom:

BASc Geological Engineering 1939

MASc Geological Engineering 1941

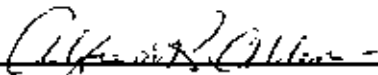
I am a member of the Association of Professional Engineers of the Province of British Columbia.

I have practised my profession for the past thirty-eight years.

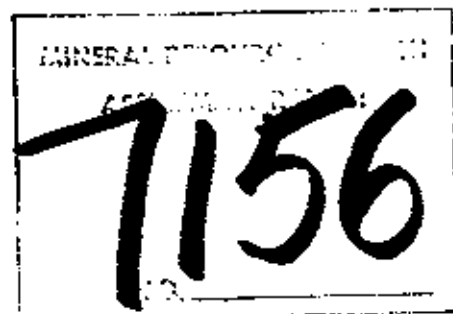
I hold no interest in the properties or securities of Gordon Resources Limited., #100 - 4240 Manor Street, Burnaby, B.C., or affiliates thereof, nor do I expect to receive any, directly or indirectly.

The accompanying report on the Daisie Property, Clinton M.D., B.C., is based upon examinations of the property by the writer May 3 and May 4, 1978, and October 10, 11, and 12, 1978.

I consent to this report being filed with the British Columbia Securities Commission.



Alfred R. Allen



Allen Geological Engineering Limited

2025 BELLEVUE AVENUE
WEST VANCOUVER, B.C. V7V 1B9

Telephone
604-926-4785

March 1, 1979.

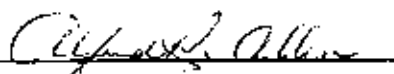
British Columbia Securities Commission
756 Fort Street
Victoria, B.C.

Dear Sirs:

Re: Gordon Resources Limited

I hereby consent to the use of my report on the Daisie Property, Clinton M.D., B.C , in any prospectus or Statement of Material Facts or other material to be filed with the British Columbia Securities Commission or the Vancouver Stock Exchange by Gordon Resources Limited.

Yours very truly,



Alfred R. Allen P. Eng.

For:

ALLEN GEOLOGICAL ENGINEERING LIMITED

GENERAL TESTING LABORATORIES

DIVISION SUPERINTENDENCE COMPANY (CANADA) LTD

1501 EAST PENDER ST. VANCOUVER B.C. CANADA V6A 1W2
 PHONE (604) 254 1617 TELEEX 04 507514 CABLE SUPERVIST

TO:
GORDON RESOURCES
 Office # 3
 100 Melorn Centre,
 Burnaby, B.C.

CERTIFICATE OF ASSAY

No: 7805-2350 DATE May 31, 1978

We hereby certify that the following are the results of assays on: Ox

MARKED	GOLD	SILVER	Copper	Molybdenite	Tungsten	XXXX	XXX	XXXX
	oz/st	oz/st	Cu (%)	MoS ₂ (%)	WO ₃ (%)			
F9 - F10	0.001	trace	0.05	0.001	trace			
F11 - F12	0.001	0.08	0.03	0.001	trace			
F13	0.001	trace	0.02	0.001	trace			
G1 - G2	0.014	trace	0.02	0.001	trace			
G3	0.001	trace	0.02	0.001	0.01			
H1	0.001	trace	0.38	0.002	0.08			
H2 - H3	0.001	0.05	0.12	0.015	0.01			
H4 - H5	0.001	trace	0.01	0.001	trace			
H6 - H7	0.004	trace	0.02	0.003	trace			
H8 - H9	0.001	0.02	0.01	0.001	trace			
H10 - H11	0.001	0.05	0.02	0.001	trace			
H12 - H13	0.001	trace	0.06	0.003	trace			
H14 - H15	0.001	0.08	0.01	0.001	trace			
I 1 - I 2	0.001	0.28	0.17	0.001	0.02			
I 3 - I 4	0.001	trace	0.03	0.001	trace			
I 5 - I 6	0.001	trace	0.11	0.001	trace			
I 7 - I 8	0.001	trace	0.06	0.001	trace			
I 9	0.012	0.10	0.01	0.001	trace			
J 1 - J 2	0.001	0.35	1.50	0.060	0.37			
J 3 - J 4	0.001	trace	0.01	0.001	trace			
J 5 - J 6	0.001	trace	0.02	0.001	trace			
J 7 - J 8	0.001	trace	0.03	0.001	trace			
J 9 - J10	0.001	trace	0.03	0.001	trace			
J11 - J12	0.001	trace	0.02	0.001	trace			
J13 - J14	0.001	trace	0.07	0.001	trace			
J15	0.001	trace	0.02	0.001	trace			
J16 - J17	0.001	trace	0.10	0.001	trace			
J18 - J19	0.001	trace	0.03	0.001	trace			
J20	0.001	trace	0.04	0.003	trace			
K1 - K2	0.001	0.39	0.01	0.002	trace			
K3 - K4	0.001	0.11	0.02	0.001	trace			
K5 - K6	0.010	0.05	0.11	0.023	0.04			
K7 - K8	0.004	0.14	0.53	0.032	0.05			
K9 - K10	0.001	0.02	0.01	0.003	trace			
K11 - K12	0.001	0.04	0.03	0.001	trace			
K13 - K14	0.001	trace	0.04	0.001	trace			
K15	0.014	0.24	0.05	0.001	trace			

Continued on next page

NOTE: REJECTS RETAINED ONE MONTH. PULPS RETAINED THREE MONTHS. ON REQUEST PULPS AND REJECTS WILL BE STORED FOR A MAXIMUM OF ONE YEAR.

ALL REPORTS ARE THE CONFIDENTIAL PROPERTY OF CLIENTS. PUBLICATION OF STATEMENTS, CONCLUSIONS OR EXTRACTS FROM OR REGARDING OUR REPORTS IS NOT PERMITTED WITHOUT OUR WRITTEN APPROVAL. ANY LIABILITY ATTACHED THERETO IS LIMITED TO THE FEE CHARGED.

I. MOSE PROVINCIAL ASSAYER

COPY

Analytical and Consulting Chemists. Bulk Cargo Specialists. Surveyors. Inspectors. Samplers. Weighers

MEMBER: American Society For Testing Materials • The American Oil Chemists' Society • London Testing Association
 Institute of Professional Chemists (IPC) • Institute of Mining Engineers • The American Oil Chemists' Society
 OFFICIAL WEIGHMASTERS FOR Vancouver Board of Trade

GENERAL TESTING LABORATORIES

DIVISION SUPERINTENDENCE COMPANY (CANADA) LTD

700 EAST BENDER ST. VANCOUVER B.C. CANADA, V6A 1W2
PHONE (604) 254-1647 TELEFAX 04-5075-14 CABLE SUPERVISE

TO:
GORDON RESOURCES

(Continued) ... page 2

CERTIFICATE OF ASSAY

No: **7805-2350** DATE: **May 31, 1978**

We hereby certify that the following are the results of assays on: Ore

MARKED	GOLD	SILVER	Copper	Molybdenite	Tungsten	XXX	XXX	XXX
	oz/mt	oz/mt	Cu (%)	MoS ₂ (%)	WO ₃ (%)			
L1 - L2	0.014	0.18	0.11	0.037	0.64			
L3 - L4	0.001	0.22	0.11	0.212	0.11			
L5 - L6	0.001	0.28	0.02	0.042	trace			
L7 - L8	0.001	0.03	0.03	0.001	trace			
L9 - L10	0.001	trace	0.05	0.001	trace			
L11 - L12	0.001	trace	0.15	0.001	trace			
L13 - L14	0.001	trace	0.04	0.001	trace			
L15	0.001	0.05	0.02	0.001	trace			
M1 - M2	0.001	0.10	0.13	0.085	0.56			
M3 - M4	0.001	0.10	0.25	0.107	0.49			
M5	0.001	0.21	0.47	0.305	0.37			
M1	0.001	0.15	0.02	0.020	0.05			
M6 - M7	0.001	0.04	0.04	0.100	0.14			
M8 - M9	0.001	0.03	0.02	0.013	0.04			
M10 - M11	0.001	0.33	0.03	0.010	0.33			
L12 - N13	0.001	trace	0.03	0.018	0.48			
L14 - N15	0.001	trace	0.01	0.007	trace			
N16	0.001	0.02	0.01	0.001	trace			
S1 - S2	0.001	trace	0.01	0.001	trace			

REMARK: Molybdenum results calculated as MoS₂.

NOTE: REJECTS RETAINED ONE MONTH PUMPS RETAINED THREE MONTHS ON REQUEST
PUMPS AND REJECTS WILL BE STORED FOR A MAXIMUM OF ONE YEAR

REPORTS ARE THE CONFIDENTIAL PROPERTY OF CLIENTS PUBLICATION OR STATEMENTS CONCLUSION OR EXTRACTS FROM OR REGARDING OUR REPORTS IS NOT PERMITTED WITHOUT OUR WRITTEN APPROVAL ANY LIABILITY ATTACHED THERETO IS LIMITED TO THE FEE CHARGED

L. WONG

PROVINCIAL ASSAYER

COPY

Analytical and Consulting Chemists, Bulk Cargo Specialists, Surveyors, Inspectors, Samplers, Weighers

MEMBER American Society For Testing Materials - The American Oil Chemists' Society - Canadian Testing Association
MEMBER AND/OR OFFICIAL CHEMISTS FOR: National Institute Of Diesel Products - The American Oil Chemists' Society
OFFICIAL WEIGHMASTERS FOR: Vancouver Board Of Trade



Kamloops Research & Assay Laboratory Ltd.

2095 WEST TRANS CANADA HIGHWAY—KAMLOOPS, B.C. V1S 1A7
TELEPHONE 372-2784 · TELEEX 048-8320

B.C. LICENSED ASSAY,
GEOCHEMICAL ANALYSTS

CERTIFICATE OF ASSAY

TO Gordon Resources,
1657 Adams Street,
Vancouver, B. C.

Certificate No. K-1904
Date November 23, 1978.

I hereby certify that the following are the results of assays made by us upon the herein described drill core samples

Kral No.	Marked	GOLD	SILVER	LiO	Cu	W				
		Ounces Per Ton	Ounces Per Ton	Percent	Percent	Percent	Percent	Percent	Percent	Percent
1	1 G - 1			.055	.07	.71				
2	1 G - 2			.90	.14	.12				
3	1 G - 3			.009	.05	.04				
4	1 G - 4			.257	.08	1.20				
5	1 G - 5			.212	.06	.19				
6	1 G - 6			.179	.13	.11				
7	1 G - 7			.111	.16	.20				
8	1 G - 8			.190	.12	.43				
9	1 G - 9			.046	.22	.43				
10	1 G - 10			.020	.25	.07				
11	* 1 G - 11			-	-	-				
12	* 1 G - 12			-	-	-				
13	* 1 G - 13			-	-	-				
	* 34 element spectrographic analysis									

NOTE:

Rejects retained three weeks
Pulps retained three months
unless otherwise arranged.

Assay for Ref 13
.....
Registered Assayer, Province of British Columbia



Kamloops Research & Assay Laboratory Ltd.

2095 WEST TRANS CANADA HIGHWAY-KAMLOOPS, B.C. V1S 1A7
TELEPHONE 372-2784 - TELEX 048-8320

B.C. LICENSED ASSAYERS
GEOCHEMICAL ANALYSTS

CERTIFICATE OF ASSAY

TO Gordon Resources

Certificate No. K-1844

Date November 23, 1978.

I hereby certify that the following are the results of assays made by us upon the herein described drill core samples

Kral No.	Marked	GOLD	SILVER	Mo	Cu	W				
		Ounces Per Ton	Ounces Per Ton	Percent	Percent	Percent	Percent	Percent	Percent	Percent
14	1 D - 1			.009	.30	.04				
15	1 D - 2			.019	.43	.06				
16	1 D - 3			.046	.36	.07				
17	1 D - 4			.170	.12	.29				
18	1 D - 5			.025	1.10	.04				
19	1 D - 6			L.001	.49	.06				
20	1 D - 7			.249	.25	.29				
21	1 D - 8			.170	.12	.97				
22	1 D - 9			.059	.08	.65				
23	1 D - 10			.115	.08	.03				
24	1 D - 11			.081	.04	.01				
25	1 D - 12			.041	.12	.03				
26	1 D - 13			L.001	.08	Tr				

L denotes "less than"
Tr denotes "trace"

NOTE:

Rejects retained three weeks
Pulps retained three months
unless otherwise arranged.

Waz for P&S
.....
Registered Assayer, Province of British Columbia



Kamloops Research & Assay Laboratory Ltd.

2095 WEST TRANS CANADA HIGHWAY—KAMLOOPS, B.C. V1S 1A7
TELEPHONE 372-2784 - TELEEX 048-8320

B.C. LICENSED ASSAYERS
GEOCHEMICAL ANALYSTS

CERTIFICATE OF ASSAY

TO Gordon Resources

Certificate No. K-1844

Date November 23, 1978.

I hereby certify that the following are the results of assays made by us upon the herein described drill core samples

Kral No.	Marked	GOLD	SILVER	Mo	Cu	W			
		Ounces Per Ton	Ounces Per Ton	Percent	Percent	Percent	Percent	Percent	Percent
27	1 E - 1			L.001	.10	.05			
28	1 E - 2			L.001	.13	.01			
29	1 E - 3			.006	.99	.06			
30	1 E - 4			.013	.20	.63			
31	1 E - 5			.092	.08	.25			
32	1 E - 6			L.001	.91	.02			
33	1 E - 7			L.001	.39	.23			
34	1 E - 8			.193	.36	.05			
35	1 E - 9			.385	.12	.44			
36	1 E - 10			.042	.16	.01			

L denotes "less than"

NOTE:

Rejects retained three weeks
Pulps retained three months
unless otherwise arranged.

SAB for P...
.....
Registered Assayer, Province of British Columbia



Kamloops Research & Assay Laboratory Ltd.

2095 WEST TRANS CANADA HIGHWAY-KAMLOOPS, B.C. V1S 1A7
TELEPHONE 372-2784 • TELEX 048-8320

B.C. LICENSED ASSAYERS
GEOCHEMICAL ANALYSTS

CERTIFICATE OF ASSAY

TO Gordon Resources

Certificate No. K-1844

Date November 23, 1978.

I hereby certify that the following are the results of assays made by us upon the herein described drill core samples

Kral No.	Marked	GOLD	SILVER	Mo	Cu	W				
		Ounces Per Ton	Ounces Per Ton	Percent	Percent	Percent	Percent	Percent	Percent	Percent
37	1 F - 1	.002	.13	.017	.56	Tr				
38	1 F - 2	.008	.16	.002	.65	.04				
39	1 F - 3	Tr	.02	L.001	.21	.06				
40	1 F - 4	.005	.08	L.001	.37	.04				
41	1 F - 5	.005	.09	L.001	.43	.02				
42	1 F - 6	.003	.39	L.001	1.15	Tr				
43	1 F - 7	Tr	.05	L.001	.24	Tr				
44	1 F - 8	Tr	.13	.006	.30	.02				
45	1 F - 9	.001	.07	.004	.14	Tr				
46	1 F - 10	Tr	.12	.001	.36	.07				
47	1 F - 11	Tr	.09	.001	.22	.06				
48	1 F - 12	Tr	.03	.004	.19	.03				
49	1 F - 13	.004	.21	.001	.60	Tr				
50	1 G - 1			.001	.09	Tr				
51	1 G - 2			L.001	.05	Tr				
52	1 G - 3			.001	.18	.20				
53	1 G - 4			L.001	.11	.43				
54	1 G - 5			L.001	.06	Tr				

L denotes "less than"
Tr denotes "trace"

NOTE:

Rejects retained three weeks
Pulps retained three months
unless otherwise arranged.

Samp. for Pulp
.....
Registered Assayer, Province of British Columbia

GENERAL TESTING LABORATORIES

DIVISION SUPERINTENDENCE COMPANY (CANADA) LTD

1001 EAST PENDER STREET VANCOUVER B.C. CANADA
PHONE (604) 254-1647 TELEX 04 507514 CABLE SUPERVISE

SEMI QUANTITATIVE SPECTROGRAPHIC ANALYSES CERTIFICATE

TO:
GORDON RESOURCES
1,240 Manor Street
100 McLean Centre
Burnaby, B.C.
V5G 1B2

No.: 7805-2350A DATE: June 6/78

We hereby certify that the following are the results of spectrographic analyses made on:

		1	2	3	4	5	
Aluminum	Al	10.					SAMPLE No. 1 2 3 4 5 DESCRIPTION: Composite (1 - 56)
Antimony	Sb	TRACE					
Arsenic	As	0.02					
Barium	Ba	TRACE					
Beryllium	Be	TRACE					
Bismuth	Bi	ND					<p>All results expressed as percentages</p> <p>MATRIX — Major constituent MAJOR — Above normal spectrographic range TRACE — Detected but minor amounts N.D. — Not detected ★ — Suggest assay</p> <p>NOTES: Rejects retained one month. Pulps retained three months. On request pulps and rejects will be stored for a maximum of one year.</p> <p>ALL REPORTS ARE THE CONFIDENTIAL PROPERTY OF CLIENTS. PUBLICATION OF STATEMENTS, CONCLUSION OR EXTRACTS FROM OR REGARDING OUR REPORTS IS NOT PERMITTED WITHOUT OUR WRITTEN APPROVAL. ANY LIABILITY ATTACHED THERETO IS LIMITED TO THE FEE CHARGED.</p>
Boron	B	0.001					
Cadmium	Cd	ND					
Calcium	Ca	MAJOR					
Chromium	Cr	0.02					
Cobalt	Co	TRACE					
Copper	Cu	0.1					
Gallium	Ga	ND					
Gold	Au	TRACE					
Iron	Fe	5.					
Lead	Pb	ND					
Magnesium	Mg	3.					
Manganese	Mn	0.2					
Molybdenum	Mo	0.01					
Niobium	Nb	ND					
Nickel	Ni	0.001					
Potassium	K	TRACE					
Silicon	Si	MATRIX					
Silver	Ag	TRACE					
Sodium	Na	TRACE					
Strontium	Sr	0.02					
Tantalum	Ta	ND					
Thorium	Th	ND					
Tin	Sn	ND					
Titanium	Ti	0.4					
Tungsten	W	ND					
Uranium	U	ND					
Vanadium	V	0.01					
Zinc	Zn	0.1					


L. WONG, Chief Assayer
SIGNATURE AND TITLE

COPY

Analytical and Consulting Chemists, Bulk Cargo Specialists, Surveyors, Inspectors, Samplers, Weighers

MEMBER: American Society for Testing Materials • The American Oil Chemists' Society • Canadian Testing Association
MEMBER AND OFFICIAL CHEMISTS FOR: Vancouver Merchants Exchange • National Institute of Oilseed Products • The American Oil Chemists' Society
OFFICIAL WEIGHMASTERS FOR: Vancouver Board of Trade • Vancouver Merchants Exchange