

R. Trifaux; Coquitlam, British Columbia.

Assessment works during April 1978 to April 1979.

Cariboo Mining Division, British Columbia.

Prospecting Report.

<u>Table of Contents.</u>	Pages no
1-Introduction.....	I
2-Technical data.....	2 to 14
3-Itemized cost statement.....	15 to 30
4-Geochemical reports.....	31 to 41
5-Statement of Qualifications.....	-
6-Maps.....	-

7248

R. Trifaux, Coquitlam, British Columbia.

Assessment works during April 1978 to April 1979

Cariboo Mining District, British Columbia.

PROSPECTING REPORT

- 1-Do-Do group of claims.
- 2-Isasa group of claims.
- 3-Purden group of claims.

Locations: Do-Do and Isasa groups, Map 93A/I3W
Latitude 52°59' Longitude 121°05'

Purden group, Map 93H/I3W
Latitude 53°58'48" Longitude: 121°05'51"

Cariboo Mining District-sixty kilometres northwest of Likely, immediately north of the Sovereign Creek, near Eskridge creek for the first two groups.

51kms east of Prince-George, immediately south of Purden Lake for the last group.

Claims: W.I.M. 1 & 2.
W.I.M. Ta. 1 to 6.
W.I.M. Cal 1 to 5.
Bar-Mag 1 to 4.

Owner: Rene Trifaux, 308-751 Clarke Road, Coquitlam,
British Columbia. V3J 2 Y3.-

Metals: copper-zinc-Lead-Silver-Barite-Fluorite-Molybdenum.

Works summary:

DODO: Stream sediments geochemical analysis.
Reconnaissance for soils surveys. Assays-Prospecting.

Isasa: Stream sediments geochemical survey-outcrops samplings
Assays-Prospecting.

Purden Lake: reconnaissance of the region, sites. Sampling-
Assays of outcrops-geology.

R. Trifaux. Coquitlam, British Columbia.

Assessment works during April 1978 to April 1979

Cariboo Mining District, British Columbia.

Prospecting report-Introduction.

The areas related in the report are situated 34 miles approximately in a south-easterly direction from the town of Quesnel.

Some works have been done in a new area situated approximately 35 miles east of the city of Prince George on the Prince-George Jasper highway, 2 miles west of the Purden Lake service station.

The scope of the investigations has been concentrated on the claims referred to on the title page, i.e.:

W.I.M. I&2-15942-15943.

W.I.M.TA. 1 to 6-15916-15917-15913-15944-15945.15941.

W.I.M. Cal I to 5-703-704-761-762-861-

Bar-Mag. I to 4-686-685-485568-485567-

The regions prospected east of Quesnel are situated on the Swift River Forestry Road between Mile 7 and Mile 10 of the said road.

Last year all prospecting was done on the right bank of the Sovereign creek, this year it was done on the two banks of the same creek.

Reconnaissance works were done on the Purden Lake claims. Some outcrops with mineralizations were found and follow-up will be made. Exploration in the Quesnel area has been very active in placer gold because of the high prices of the commodity in 1978. People from the States were trying new devices for exploration of the yellow metal in the Cariboo.

The Forestry Road has been graded by the Quesnel Department of Highways and is in good shape as usual. The travelling conditions from Quesnel to the sites are always good.

New secondary access roads established by the forestry Companies for logging, permit good access to reconnaissance prospecting. Quite a number have been excavated in the area.

The investigations consisted of collecting samples for completion of my geochemical surveys, delineation and directions of faults, research for contacts intrusives, geology.

The period of investigations started in the month of April 1978 and was considered terminated in the field in September 1978; the claim-staking has been excluded from this report.

R. Trifaux, Coquitlam, British Columbia.

Assessment works during April 1978 to April 1979

Cariboo Mining District, British Columbia.

Prospecting Report (cont'd).

Areas prospected. Generally the North-west corner of map 93A/I3W(M) and the area south of Purden Lake on map M-93H/I3W.

The areas prospected on map 93A/I3/W(M) are situated on the right bank of the Sovereign Creek, east and west of the Eskridge creek. No claims have been added to the Do-Do group of claims but 3 claims have been added to the Isasa group.

Also this year prospecting was done on the left bank of the Sovereign Creek in the area situated between the left bank of the Atis creek and the right bank of the Chipp creek.

In the 1975 report submitted to the Ministry of Mines of British Columbia, I showed that I had already done a brief reconnaissance of the left bank and I reported some assays on Cu, Pb, Zn, Mo (see report of assessment works 1975-report A25-738 Bondar-Clegg Lab. The assays were made on chip samples in the left affluent of the Sovereign creek close to the culvert of the road going to the Atis creek (no name has been given to the creek on the maps).

This year I explored the creek to find out informations about the formations of the area. I found rocks showing hydrothermal alterations; in schists I found some copper stains and iron, the direction of the rocks is approximately east-northerly to south-westerly. I didn't find any gossan but I found some on the right bank of the Sovereign itself. In the Atis creek I didn't find any gossan, and the greenstones contain a few pyrites blebs in one place. At this time it is difficult to relate the greenstones to the general environment. I found 2 parts of a gossan on the trail going to the Atis and will try to trace it to the top of the hill next year.

In 1975, I did a geochemical survey (soils) of a small area of 240mX90m, with lines at 30 metres and pits also at 30 metres. I indicated some results of Pb, Zn, Cu, Mo, Ag. Next year I will extend the geochemical works for soils on the right bank of the Sovereign creek with lines at 100 metres and pits at 50 metres or less. The left bank will also be tested in soils and stream sediments.

I also intend to do a magnetic survey on several parts of the areas which will be done as a complement of the geochemical survey.

CLAIMS W.I.R. CAL 1, 2, 3, 4, 5. Last year the prospecting report was reflecting the work on claims 1&2, and mainly to the extent and quality of the limestones in the area.

.../.....

L. Trifaux. Coquitlam. British Columbia.

Assessment works during April 1978 to April 1979

Cariboo Mining District. British Columbia.

Prospecting report. (cont'd)

We did some sampling and analyses of the limestones for Barite, Fluorite.

We started the prospecting of the creek on the right bank of the Sovereign creek, (100 metres approximately west of the burned Mill) and found a float containing sulphides. The rock is sheared and intermediate in composition. The rock was found 1km east of the geochemical survey done in 1975. On the banks of the creek, we found schists containing hematite, some copper stains and a vein containing small quartz and quartz veinlets and limonite boxworks. The two banks are more or less abrupt and form a small canyon. The schists described above contains hydrothermal alterations.)

On the west side of claim Wim-Cal 2, there is a small creek not represented on any map where 10 analyses of stream sediments were done as follows:

CU.	Pb.	Zn.	Ag.	F.	Extraction: Hot aqua regia
58	10	208	179	230	Cu, Pb, Zn, Ag. Specific Ion: F.
67	6	258	1,6	175	Atomic absorption: Cu, Pb, Zn, Ag.

This creek will receive more attention in the season 1979-80. The samples were taken 5 to 600 metres downstream from the source.

Prospecting on claim no 5 staked this season, we found a pudding stone with huge elements, the cement of the pudding contains calcium and iron. Close to the stones some epidotes were detected in the limestones.

We also found a rock aphanitic in texture with numerous sulphides, the sulphides cannot be seen without lens and the geochemical analysis gave:

CU	Pb	Ba	Ag
100ppm	100	.21%	.17 oz.

This area (claims Wim-Cal 1 to 5, will be investigated with a geochemical soils survey during the next season. The sporadic results of 1975 and the ones of this year demand more work.

Purden Lake: Claims Bar-Mag 1 to 4.

Prospecting consisted of the reconnaissance of the intrusive. We found several samples of a grey to green rock, more basic than acidic containing:

.../...

R. Trifaux. Coquitlam, British Columbia.

Assessment works during April 1978 to April 1979.

Cariboo Mining District, British Columbia.

Prospecting report (cont'd).
Areas prospected. Purden Lake (cont'd).
The rock after analysis contained:

Cu. (ppm)	Zn.	Pb.	mo.	Ag.	Au.
400	100	300	10	.02 Oz	.001 oz.

Also another white rock (smithsonite?) showed the following results:

Pb. (ppm)	Zn.
200	400

Some of the above results are quite anomalous and further work will be done in this area. We prospected the region to have an idea of the settings and formations. A huge formation of greenstones with an aphanitic texture, showing no mineralization, is at 30 metres to 120 metres south of the last stake of the claim (last stake is the one situated south of the road to Prince-George and the lake). The main mountain is a forceful intrusion, but beside it quite a number of more or less passive intrusions exist and it is in one of them I found the above mineralizations. In some rocks, veinlets of chalcocite are pervasive in the texture, sulphides (pyrite and chalcopyrite) are showing. A geochemical survey of the area should be done, soils and stream sediments in the small creek to the south of the claims. Schists which have been leached are showing copper stains in some places; it is difficult to establish if the schists have been a part of alteration of an intrusive, more research has to be done. Also at this time it is difficult to tell if the formation is in the Mesozoic era; the rocks are quite different than the ones near Quesnel. The access to the claims is quite easy by the Prince-George-Jasper highway. A small logging road branches from the main road to the south for approximately 120 metres and the first stake is in the proximity. (see plan related to staking).

If time permit, we plan to do a magnetic survey of the area in 1979.

Do-Do Claim Group.

The skarn formation referred to in my 1977-78 report covers the area comprised between creek 1, 2, 3, & 4 (see map) and I described the access to this formation in the same report. Here we continued the stream sediments samplings and analyses. We enclose in this report a complete list of the results for the sampling done to date.

.../...

R. Trifaux, Coquitlam, British Columbia.

Assessment works during April 1978 to April 1979

Cariboo Mining District, British Columbia.

Prospecting Report-cont'd.

Areas prospected. Do-Do group(cont'd)

Regarding the results of the geochemical reports, we found out that the nickel values included the sulphides and silicates results together (silicates which may be associated with the sulphides); it depreciates the results for nickel to a small extent but it is worth noting.

The anomalous results for Ba, F, Zn, Pb, are showing the possibilities of a lead-zinc deposit.

I had the opportunity to read and study a paper from the book on Geochemical Exploration, special Vol. II-1971-The Canadian Institute of Mining and Metallurgy entitled:

"Primary Halos in Prospecting for Sulphides deposits-by L.N. Ovchinnikov and S.V. Grigaryan-Institute of Mineralogy, Geochemistry, and crystallochemistry of the Rare Elements, Moscow, USSR."

The paper describes the morphology and the nature of primary halos associated with a number of types of minerals deposits including the lateral and vertical zonation of a number of indicator elements.

I quote the following:

"Primary Halos have proved useful in prospecting for a number of mineral deposits in the Soviet Union. The success ratio attained when primary halos are used is high"

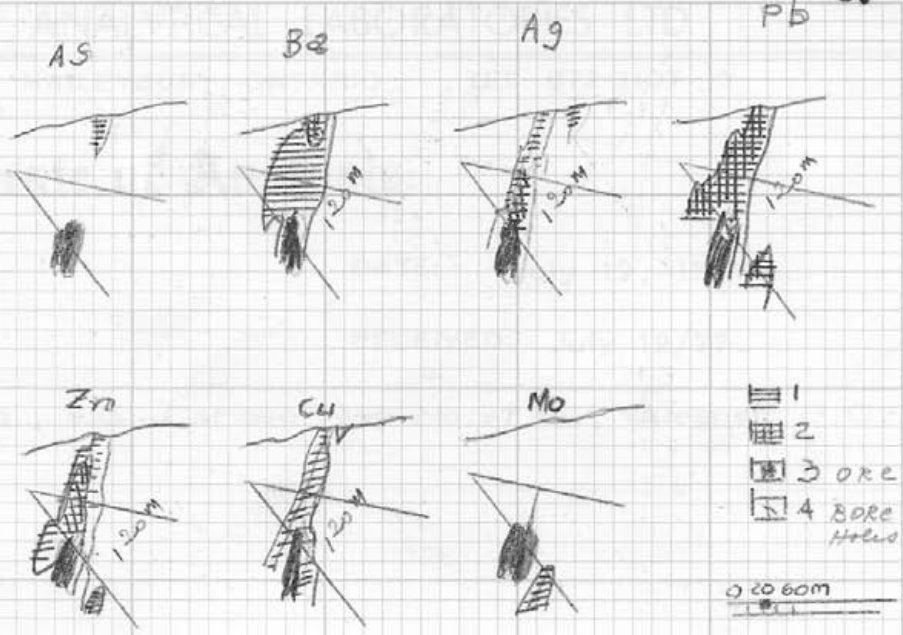
"Intense halos of barium, arsenic, antimony are typical indicators of supra-ore sections and detected by geochemical sampling. Copper is both typical of supra-ore and sub-ore profiles in lead-zinc deposits in skarns"

The investigations have demonstrated the great geologic and economic efficiency of primary geochemical halo techniques in the evaluation and forecasting of ore potentials of the deeper parts and flanks of known deposits. Commercial deposits have been detected at vertical depths up to 500 metres in 24 of 26 explored areas with geochemical prospecting had indicated to be promising"

Comparison of endogenous geochemical halos around Lead-zinc ore-bodies in skarn with chip samples analyses from my skarn prosp.

: Elemental contents %	: Same elements from my
: in dispersion halos	: skarn formation.
: -----	
: As - 0,0015 - 0,003%	: As- 0,003%
: Ba - 0,01 - 0,1 %	: Ba- 0.08-0.1-0,46%
: Ag - 0,00003- 0,0001%	: Ag- 0.003%
: Pb - 0,003 - 0.01%	: Pb- 0.018-0.058-0.12%
: zn - 0.005 - 0.01%	: zn- 0.01 -0.026%
: Cu - 0.003 - 0.001%	: Cu- 0.015-0.003

..//...



PLAN VIEW

Endogenous geochemical halos around a lead-zinc ore in SKARN. (from Ochinnikov & Grigoryan)
 The Canadian Institute of Mining & Metall.

METALS contents in dispersion halos

	1	2	WIM-TA CLAIMS
AS.	0.0015 TO 0.003%		< 0.003%
BA.	0.01 TO 0.1%	0.1 TO 0.2%	0.46% - 0.08 - 0.1%
AG.	0.00003 TO 0.0001%	0.001 TO 0.008%	< 0.003%
PB.	0.003 TO 0.01%	0.001 TO 0.1%	0.12 - 0.018 - 0.058%
ZN.	0.005 TO 0.01%	0.01 TO 1.0%	0.01 - 0.026%
CU.	0.003 TO 0.05%		0.015% - 0.003%
MO.	0.003 TO 0.001%		-

comparisons of geochemical values (Rocks)
 see results of geochemical Reports from
 Laboratories attached to the Report.



Certificate of Analysis

NO. 8111

DATE: July 19, 1977.

SAMPLE(S) OF: Rock(2)

RECEIVED: July 19/77.

SAMPLE(S) FROM: R. Trifaux, Esq., 955, Cariboo Hwy No.97 N., Quesnel, B.C.

	<u>Sample No.</u>	<u>% Copper</u>	<u>% Nickel</u>	<u>% Zinc</u>	<u>% Lead</u>
<i>Spec R skerr</i>	<i>Do. Do.</i> 4	0.015	0.13	0.010*	0.012*
<i>Spec R skerr</i>	<i>Do. Do.</i> 5	0.002	0.08	0.003	0.014

* No charge as not requested.



Certificate of Analysis

NO. 7483

DATE: July 5, 1977.

SAMPLE(S) OF: Rock(2)

RECEIVED: June 30/77.

SAMPLE(S) FROM: R. Trifaux, Esq., No.510, 10140, 113 St., Edmonton, Alberta.

<u>Sample No.</u>	<u>Oz. Silver</u>	<u>% Nickel</u>	<u>% Cobalt</u>	<u>% Lead</u>	<u>% Zinc</u>
2		0.12		0.018*	
3	Trace	0.064	N.D.**	0.058*	0.008*

* No charge as not requested.

** Not detected.

ACCORDANCE WITH LONG ESTABLISHED NORTH AMERICAN CUSTOM UNLESS IT IS SPECIFICALLY STATED IN THESE GOLD AND SILVER VALUES REPORTED ON THESE SHEETS HAVE NOT BEEN ADJUSTED TO COMPENSATE FOR LOSSES AND GAINS INHERENT IN THE FIRE ASSAY PROCESS

BELL-WHITE ANALYTICAL LABORATORIES LTD.

PER 



Certificate of Analysis

NO. 9975

DATE: September 2, 1977.

SAMPLE(S) OF: Rock(1)

RECEIVED: September 1/77.

SAMPLE(S) FROM: R. Trifaux, Esq., 955, Cariboo Hwy No.97 N., Quesnel, B.C.

<u>Sample No.</u>	<u>% Nickel</u>	<u>% Cobalt</u>	<u>% Tungsten</u>	<u>% Molybdenum</u>	<u>% Lead</u>	<u>% Zinc</u>
9	0.09	0.006	0.009	Nil	0.01*	0.007*

* No charge as not requested.



Certificate of Analysis

NO. 8748

DATE: August 3, 1977.

SAMPLE(S) OF: Rock(3)

RECEIVED: August 2-3/77.

SAMPLE(S) FROM: R. Trifaux, Esq., 955 Cariboo-Hwy No.97 N., Cuesnel, S.C.

(Handwritten note)

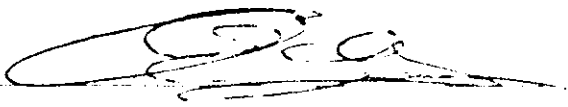
<u>Sample No.</u>	<u>% Copper</u>	<u>% Lead</u>	<u>% Zinc</u>
6	0.003	0.016*	0.010*
7	0.003	0.033*	0.026*
8	0.003	0.006	0.006

* No charge as not requested.

Note: Molybdenum to follow.

2
2

BELL-WHITE ANALYTICAL LABORATORIES LTD.

PER 

IN ACCORDANCE WITH LONG-ESTABLISHED NORTH AMERICAN CUSTOM UNLESS OTHERWISE SPECIFICALLY STATED OTHERWISERESULTS AND OTHER VALUES REPORTED ON THESE TESTS SHALL NOT BEVARIABLE TO COMPENSATE FOR LOSS OF SAMPLE INHERENT IN THE FIRE ASSAY PROCESS

Assessment works during April 1978 to April 1979

Cariboo Mining District,British Columbia.

Prospecting Report (cont'd)

Areas prospected,Do-Do Group(cont'd):

Note:I attach here the laboratory report(copies) on my chip samples which have been taken in 1977,analyzed the same year,from the skarn formation on my claims.

I quote again the paper :

" Intensens halos of barium,arsenic,antimony are typical indicators of supra-ore sections"etc....

As you know by my last report,the barium halo is extensive.

From the above comparisons between the paper figures and the ones from my formation,the dispersion halo clearly indicate not only a barium deposit but also one of lead-zinc,silver.

I am planning more work on this next year,soils geochemical for the entire prospect.

I would also quote some informations from the book by Park and Mac Diarmid,(W.H.Freeman Company,San Franscisco):

"Wherever either barite or fluorite is concentrated in large deposits,it is likely to be ore.Also,well known but less common associations are fluorite with lead and zinc deposits,barite with lead and copper ores"

The soil sampling which I project to do will help to localize the formations .

North of the claims,I followed the fault from the 3500' level to near the top of the mountain.Overburden,and glacial till is covering the outcrops.

A sample of the body has been analyzed and is showing the dolomitic nature of the rocks.Also some crystallization of the barites were found.The last results of the stream sediments analyses are showing the extent of the barite formation in creek no2. On creek no 3 we found a dioritic intrusion near a quartz monzonite body(dyke).The diorite is mineralized but has not been analyzed.

The quartz monzonite which is deeply altered shows the existence of the following minerals,i.e.:

Cu	Pb	Zn	Ag
63ppm	30ppm	24ppm	1.4ppm

The assays for tungsten gave the following figures in the stream : sediments:

W: 4,4,5,5,5,4,6,4.

The presence of the metal has been detected.

More works will be done in 1979-1980 season.

R. Trifaux, Coquitlam, British Columbia.

Skarn formation-Stream Sediments Geochemical survey analyses. 13.
 Summary of Bondar-Olegg reports (part submitted to the Ministry
 of Mines of B.C. with the 1978 report and part with this 1978-
 1979 report.

Creek no. Sample no	Cu :ppm	Ag :ppm	Mn :ppm	Co :ppm	Cd :ppm	F :ppm	Ba :ppm	Zn :ppm	Pb :ppm	UO3 :ppm	W :ppm
Cr. 1-no1	43	-	136	-	1.2	560	175	108	24	.8	4
no2	18	-	480	-	1.4	500	120	120	15	-	-
Cr. 2-no3	42	-	64	-	-	-	500	96	-	-	-
no4	37	-	304	-	-	-	295	110	-	-	-
no5	35	-	307	-	-	-	310	106	2	-	2
no6	32	-	328	-	-	-	320	110	-	-	1
no7	35	-	308	21	-	-	310	122	-	-	-
no8	36	-	300	23	-	-	260	112	-	-	-
Cr. 2.no1-b	44	1.4	-	-	-	-	-	139	13	-	-
no2-b	-	-	284	-	-	-	-	154	-	-	-
no3-b	-	-	-	-	-	-	-	128	-	-	-
no4-b	-	-	324	-	-	-	-	125	-	-	-
no5-b	-	-	-	-	-	280	-	146	-	-	-
no6-b	-	-	289	-	-	230	830	130	-	-	-
no7-b	-	-	334	-	-	200	570	110	-	-	-
no8-b	-	-	-	-	-	220	620	105	-	-	-
no9-b	-	-	320	-	-	240	-	117	-	-	-
no10-b	36	1.2	314	-	-	-	-	108	13	-	6
Cr. 3.no1-A	-	-	1650	-	-	630	96	-	-	.6	4
no1-B	-	-	480	-	-	600	145	-	-	-	-
no-2	-	-	1420	-	-	680	65	164	14	41	5
no-3	33	-	1320	-	-	-	200	-	-	.2	-
no-8	44	-	530	-	-	1100	1100	710	16	13	-
no-9	62	-	930	-	-	1040	1000	960	14	-	-
no-10	-	-	1270	-	-	600	65	154	21	1	5
no-11	47	-	1960	-	-	300	250	248	-	-	-
no-12	42	-	680	-	-	480	500	126	-	-	-
no-13	44	-	1810	-	-	420	400	274	-	-	-
no-14	30	-	460	-	-	425	550	110	-	-	-
no-15	-	-	840	-	-	820	185	550	20	-	-
no-16	80	-	820	-	-	1700	285	760	29	-	-
no-17	38	-	740	-	-	285	80	70	12	24	5
no-18	14	-	330	-	-	-	-	-	-	-	-
no-19	14	-	420	-	-	-	-	-	-	-	-
no-20	14	-	405	-	-	530	105	73	12	-	-
no-21A	14	0.2	380	-	-	435	-	76	-	-	-
no-21B	11	0.2	275	-	-	370	-	62	-	-	-
no-22	14	0.2	348	-	-	-	-	-	-	-	-
Cr. 4.No-1	44	0.8	580	-	-	610	730	2160	-	-	-
no-2	40	0.8	530	-	-	700	-	1920	-	-	-
no3-A	29	0.4	510	-	-	670	640	1800	-	-	-
no3-B	57	1.1	1570	-	-	280	350	152	-	-	2
no4-	23	0.2	615	-	-	470	-	156	-	-	-
no5-A	42	0.9	450	-	-	-	-	308	-	2	3
no5-B	32	0.6	430	-	-	540	710	-	-	-	-
no5-C	26	1.0	2500	-	-	910	52	360	23	.8	4
no6-	47	0.6	1640	-	-	480	-	108	-	-	-
no7-	25	0.4	1540	-	-	850	-	186	-	-	-

UO3-Chip

R. Trifaux, Coquitlam, B.C.

Assessment works for period April 1978 to April 1979.

Cariboo Mining District.

Assays and Analyses by reports

Laboratory.	W.O. Nos.	Reports nos	Nos of Analyses	Types of analyses.
Bondar-Clegg	B-3472	A282I	(1	Basic Fusion
Bondar-Clegg	B-3803	28-I46	(2 44	Hot Aqua-Regia Multiacid ex- traction.
Bondar-Clegg	B-3750	28-I53	3	Atomic Absor- ption.
Acme-Vanc.	8222I	822I	8	Specific Ion Colorimetric.
Bondar-Clegg	B-3814	28-I56	44	Fluorimetric.
Bondar-Clegg	B-3852	28-I73	4	XRF. Assays.
Bondar-Clegg	B-3880	28-223	4	
Bondar-Clegg	B-3887	28-230	II	
Bondar-Clegg	B-3887	28-230 A	3	
Bondar-Clegg	B-8248	28-328	48	
Acme Vanc.	867I	867I	7	
Bondar-Clegg	B-9864	28-8II	5	
Bondar-Clegg	B-I306	28-I00I	7	
Total.	13		184	

Assessment works during April 1978 to April 1979.

Cariboo Mining District, British Columbia.

Summary of expenditures during the period. Filled.

Descriptions.	April	June	July	September	Totals.
	\$	\$	\$	\$	\$
Trips to Quesnel &					
Back. Gas-Oil.	89.50	70.25	41.54	79.75	281.04
Lodging-Quesnel & other	95.35	106.45	46.20	78.40	326.40
Miscellaneous	-	6.72			6.72
Food. Meals to work.	31.50	42.00	7.00	52.50	133.00
Transportation. Mileages	134.46	146.16	-	199.80	480.42
Assays-Analyses. Labs.		in total		491.35	491.35
Time (see details)	120.00	160.00	20.00	260.00	560.00
Totals.	470.81	531.58	114.74	1161.80	2278.93

Less gas, oil etc.. or 281.04 = 2278.93 - 281.04 = :::::..... \$ 1997.89

Miscellaneous; Office work etc..

Time for correspondence (to Labs, To Victoria, Quesnel, Ottawa)
 Time for purchases of papers, tapes, bags, stamps, materials 2 days x 40.0
 for parcels, expediting, Post Offices, To Laboratories in Vanc. = \$80.00
 Miscellaneous Mileage .100 miles x .18c = 18.00
 Prospecting Report, maps, photostatic copies etc... 300.00

Statement of exploration, Notice of group, prospecting report,
 costs paid in Quesnel receipt R 556187 225.00
 Mineral claims registration, receipts 556188 & 89.
 & 122254. 30.00

Grand Total..... \$2641.89

R. Trifaux, Coquitlam, B.C.

Assessment works during April 1978 to April 1979.

Cariboo Mining District, British Columbia.

Summary of time spent in Prospecting in general.

April 1978: Dates: 18, 19, 20, 21, 22.
 Prospecting, samples taking, etc...
 3 days x 40.00 per day = \$ 120.00
 Creek no 1, 3, 4 Wim-Ta claims near Do-do creek.

June 1978: Dates: May 31st, June 1, 2, 3, 4, 5th.
 Prospecting, sample taking etc..
 Reconnaissance at Purden Lake, orientation,
 geology, setting. Also Wim-Cal claims west of
 Eskridge creek.
 4 days x 40.00 = \$ 160.00

July 1978: Dates: 4, 5, 6.
 Prospecting 6 hrs. In this period the rest of the
 time was on claim-staking.
 1/2 day at 40.00 = \$ 20.00

August 1978: Claim staking only. No expenditures considered
 in this report.

Septem. 1978: Dates: sept 7, 8, 9, 10, 22, 23, 24, 25.
 Prospecting, sample taking etc., Purden Lake &
 Wim-Cal claims, also on left Bank of the Sovereign
 creek & Moustique cr.
 6 1/2 days at 40.00 = \$ 260.00

Grand total excluding claim-staking.....\$ 560.00

R. Trafaux-Coquitlam, B.C.

Assessment works during April 1978 to april 1979

Cariboo Mining District, British Columbia.

SUMMARY OF ASSAYS & GEOCHEMICAL ANALYSES.

Laboratories.	Reports nos.	Costs of Analyses	Remarks.
Bondar-Clegg-Vancouver	b-3478 ²⁹	\$ 15.00	January 1978
Bondar-Clegg-Vancouver	B-3803	80.05	April "
Bondar-Clegg-Vancouver	B-3750	23.50	May "
Acme Anal. Lab. Vancouver	822I	37.50	" "
Bondar-Clegg-Vancouver	B-3814	108.00	" "
Bondar-Clegg-Vancouver	B-3852	12.10	" "
Bondar-Clegg-Vancouver	B-3880	4.65	" "
Bondar-Clegg-Vancouver	B-3887	33.25	June "
Bondar-Clegg-Vancouver	B-3887	8.75	" "
Bondar-Clegg-Vancouver	B-8248	68.55	" "
Acme Anal. Lab. Vancouver	867I	25.50	August "
Bondar-Clegg-Vancouver	B-9864	36.00	October "
Bondar-Clegg-Vancouver	B-1306	38.50	" "
Total.		\$ 491.35	

Note: please see technical reports attached to prospecting report. There are also a few reports (costs taken in 1977-1978) taken in consideration for technical information only, and related to the skarn deposit referred to in this presentation.

R. Trifaux. Coquitlam. B.C.

Assessment Works during April 1978 to April 1979.

Cariboo Mining District-British Columbia.

Costs of transportation during the period of work in the field.

April 1978 Trip from British Columbia border with Alberta,
to Quesnel, B.C. 276 miles X 0.18 = \$ 49.68
Trips to sites: 65 miles per day.
3 days X 65 = 195 miles X 0.18 \$ 35.10
Quesnel Alberta border..... \$ 49.68
\$ 134.46

May-June 1978.

Trip from British Columbia border to Quesnel
276 miles X 0.18 = \$ 49.68
Trips to sites..... 4 days X 65 miles
or 260 miles X 0.18 = \$ 46.80
Quesnel to Alberta border
276 miles X 0.18 = \$ 49.68
\$ 146.16

July 1978.

We do not consider the expense for this period
the job was mainly claim-staking.

August 1978. Claim-staking only.

September 1978.

From Coquitlam to Quesnel.
425 miles x 0.18 = \$ 76.50
trips to sites. 4 days X 65 miles..... \$ 46.80
Or 260 miles X 0.18..... \$ 76.50
Trip to Coquitlam..... \$ 199.80

Grand total for this period..... \$ 480.42.

Assessment works during April 1978 to april 1979.

Cariboo Mining District, British Columbia.

Expenses for april 1978

Dates: april 18, 19, 20, 21, 22.

Invoices nos.	Gulf. \$	Husky \$	Shell \$	Pacific 66 \$	Costs. \$
5635244	7.50				7.50
2946456		6.00			6.00
B-21727926			27.95		27.95
5425981	8.60				8.60
5832429	3.05				3.05
5632398	6.85				6.85
5425891	8.50				8.50
5168284	5.65				5.65
5330199	6.40				6.40
5330201	9.00				9.00
Totals.	55.55	6.00	27.95		89.50

Lodging.

Talisman Inn. 5358675

\$ 71.35

Big Horn Motel. 546990

24.00

\$ 95.35

Food.

April 19-3 meals X 3.50 = \$10.50
 " 20-3 " X 3.50 = 10.50
 " 21-3 " X 3.50 = 10.50
 Total. 31.50

31.50

Grand total this page: 89.50
 95.35
 31.50
216.35

\$ 216.35

less 89.50 for gas etc..costs are considered in mileage rate.

Total: 216.35-89.50-

126.85.

7248

Assessment works during April 1978 to April 1979.

Cariboo Mining District, British Columbia.

Expenses for June 1978.

Dates: May 31st, June 1, 2, 3, 4, 5.

Invoices nos.	Gulf. \$	Husky \$	Shell \$	Pacific \$66	Costs. \$
3114321		5.25			5.25
2165871		9.00			9.00
5561954	4.00				4.00
5876535	8.40				8.40
B48778492			8.00		8.00
5724367	8.05				8.05
5027205	3.65				3.65
B44832474			7.00		7.00
5130062	9.20				9.20
B62148093			7.70		7.70
Totals.	33.30	14.25	22.70		70.25

Lodging.

Talisman Inn-Quesnel. Inv. 5608629.
Travelodge, O. Prince George.
Total:

\$ 80.90
25.55
106.45

Food.

Safeway-Quesnel.
Groceries from home. Cost considered in meals.
Groceries for which no bill established or lost.
Cost considered in meals.

10.71

June 1st. 3 meals X 3.50- 10.50
June 2nd. 3 meals X 3.50- 10.50
June 3rd. 3 meals X 3.50- 10.50
June 4th. 3 meals X 3.50- 10.50.
42.00

\$ 42.00

Tools-Miscellaneous.

Willis Harper. Quesnel.

\$ 6.72

Grand Total this page: \$ 70.25
106.45
10.71
42.00
6.72
\$236.13

less 70.25 for gas etc.. costs are considered in
mileage rate.

Total: 236.13 - 70.25-

\$165.88

Assessment works during April 1978 to April 1979

Cariboo Mining District, British Columbia.Expenses for July 1978.

Dates: 4,5,6 of July 1978

Invoices nos.	Husky.	Shell	Gulf.	Totals.
2946684	9.00			\$ 9.00
B62I48093		7.70		7.70
5280886			7.80	7.80
5783442			7.55	7.55
3663301	5.84			5.84
Totals.	14.84	7.70	15.35	41.54

Lodging.

Valhalla Motel. Quesnel. 46.20

Food.

July 6: 2 meals at 3.50. (prospecting) 7.00

Total this page for prospecting: 7.00

The gas expenses are considered in mileage rates.
I didn't consider the lodging here, because the maximum expenses relates to claim staking.

Total to be considered: 7.00

Note: In August I did claim staking at Purden Lake
and the expenses are not considered because it was
claim staking exclusively.

Assessment works during April 1978 to April 1979

Cariboo Mining District, British Columbia.

Expenses for September 1978.

Dates: september 7, 8, 9, 10, 22, 23, 24, 25.

Invoices nos.	Gulf.	Shell	Husky	Pacific	Totals
5953286	7.20				7.20
5982360	7.30				7.30
5744418	19.04				19.04
R5554962				8.35	8.35
R5554915				5.61	5.61
B77834756		5.25			5.25
B27894294		9.60			9.60
B75940512		6.50			6.50
3671303			10.90		10.90
Totals.	33.54	21.35	10.90	13.96	79.75

Lodging.

Talismann Inn

78.40

Food.

September 7-3 meals X3.50- 10.50
 8-3 " X3.50- 10.50
 9-3 " X3.50- 10.50
 23-3 " X3.50- 10.50
 24-3 " X3.50- 10.50
 25-3 " X3.50- 10.50

Exclude the 24 63.00

of september (claim-staking only. 63-10.50= 52.50.

(63.00)
 52.50

Grand total this page: 79.75

78.40

52.50

210.65

less 79.75 for gas etc... costs being considered in mileage expenses. 210.65 - 79.75-

\$130.90.

THE ROYAL BANK OF CANADA

LA BANQUE ROYALE DU CANADA

THIS IS YOUR MONTHLY CHARGE STATEMENT
KEEP THIS PORTION FOR YOUR RECORDS

CHARGE

RELEVÉ MENSUEL DE VOTRE COMPTE CHARGE
SERVER CETTE PARTIE

23

DATE	PARTICULARS/DETAILS	DEBITS/CRÉDITS
14 SEP 78	PAYMENT - THANK YOU	29.00
15 SEP 78	RE MOODY TRAV LODGE RT MOODY	17.30
05 OCT 78	TALISMAN INN QUEBEC - FOR SEPTEMBER 78	78.40
06 OCT 78	INTEREST - INTEREST	3.52

Evolution

*Paul's Savings
\$40.00*

1) VISIT THE DISCOVERY TRAIN WHEN IT COMES TO YOUR AREA. THE ROYAL BANK HELPED MAKE IT HAPPEN.

2) TRAVELLING OUTSIDE CANADA, AS A MEMBER OF THE INTERNATIONAL VISA NETWORK, CHARGE IS WELCOMED BY TWO MILLION MERCHANTS IN MORE THAN 110 COUNTRIES AND TERRITORIES AROUND THE WORLD.

ACCOUNT NUMBER 4-11 502 147 044		BALANCE ON LAST STATEMENT 508.40	TOTAL CREDITS 29.00	TOTAL DEBITS 104.22	YOUR NEW BALANCE 677.32
NO DE COMPTE		SOLDE DE RELEVÉ PRÉCÉDENT	TOTAL DES CRÉDITS	TOTAL DES DÉBITS	VOTRE NOUVEAU SOLDE
STATEMENT DATE 14 OCT 78	CREDIT STILL AVAILABLE 1275.00	PAST DUE	DUE DATE 31 OCT 78	ENTER AMOUNT PAID	MINIMUM PAYMENT 23.91
DATE DU RELEVÉ	CREDIT DISPONIBLE	PAIEMENT EN RETARD	DATE D'ÉCHÉANCE	INSCRIRE MONTANT DE PAIEMENT	PAIEMENT MINIMUM

ITEMS RECEIVED AFTER STATEMENT DATE WILL BE SHOWN ON YOUR NEXT STATEMENT
LES TRANSACTIONS REÇUES APRÈS LA DATE DU RELEVÉ FIGURERONT SUR VOTRE PROCHAIN RELEVÉ

FORM 1250 (11 77)

OVERMATEA
FOODS

01-08-78

..... 1.09 LF
..... 0.87 LF
..... 0.79 LF
..... 0.20 LF
..... 1.39 LF
1.74 •• LB
••••• BUR
..... 1.00
..... 0.22 PR
0.77 •• LB
••••• 0.59
..... 0.47 PR
1.24 •• LB
••••• 0.59
..... 0.56 PR
..... 0.50 LF
1.07 •• LB
••••• 0.79
..... 0.25 PR
*..... 7.76 TL

*..... 20.00 LF
*..... 1.25 40B

26055779 4
THANK YOU

ON VACATION OR BUSINESS TRIP

Rest at _____

24

P **FREE MOTEL**
A BOX 308 McBRIDE, B.C. PHONE 560-2633
harder full
I SEMI LOG STYLE
 KITCHENETTES - BATHTUBS - SHOWERS
D LAWNS - CAR PORTS - PATIOS
 ONE-HALF MILE TO SHOPPING CENTRE
 AMT. 28.35 DATE July 30, 1978

PHONE 992-2135

288 REID STREET

WILLIS-HARPER
QUESNEL'S ONLY LINK STORE

QUESNEL, B.C. V2J 2M2

197

NAME _____

ADDRESS _____

QUANTITY	DESCRIPTION	PRICE	AMOUNT
1	file		2.25
1	Desert nails		3.95
			2.00
			6.40
			3.22
			6.72
RECEIVED ABOVE BY _____		TAX _____	
I.O.D. ORDER _____		TOTAL _____	
CLERK	CASH	C.O.D.	CHARGE
ON ACCT.	Mdse Ret'd	PAID OUT	

5090E

FLATKAT - MOORE BUSINESS FORMS

"FIRST WITH THE BEST"

WILLIS-HARPER
HARDWARE
QUESNEL BC

- 1 JUN 78

47753

D : 06.72 TO FL.

519 2708 0337 439

1099 BMTL
RENE TRIFAUX

05/79

CLERK - COMMIS	NO N° D'AUTO
IDENTIFICATION	
4	DATE 25 79

TALISMAN INN
QUESNEL BC
9320515464 ANX
677484 CX0030
4720

5358675

SERVICES	54 00
TAX - TAXE	2 70
TIPS	14 65
TOTAL	71.35

RESTAURANT & TRAVEL SALES SUP - CUSTOMER COPY
FACTURE DE RESTAURANTS ET DE VOYAGES - COPIE DU CLIENT

ISSUER OF THE CARD DEMANDS THAT THE TOTAL AMOUNT SHOWN AS TOTAL UPON PRESENTATION OF THIS CARD TO THE BANK BE PAID TO THE BANK BY THE CARDHOLDER IN FULL AT THE TIME OF SUCH PRESENTATION. THE BANK IS NOT RESPONSIBLE FOR THE PAYMENT OF THIS CARD IF THE CARD IS NOT PRESENTED TO THE BANK AT THE TIME OF SUCH PRESENTATION. LA BANQUE NE PREND PAS EN CHARGE LE PAIEMENT DE CE CARTON SI LE CARTON N'EST PAS PRÉSENTÉ À LA BANQUE À L'ÉCHÉANCE DE LA PRÉSENTE FACTURE. LE TITULAIRE DE CE CARTON S'ENGAGE À REMBOURSER LE MONTANT INDICÉ CI-DESSUS À L'ÉCHÉANCE DE LA PRÉSENTE FACTURE.



PLEASE KEEP THIS COPY
VEUILLEZ CONSERVER CETTE COPIE

Days	
Education Cost	
Tax	
Local	
Toll	
Total	TOTAL

4510 502 142 064

04/80 BWS

RENE TRIFAUX-SR

AUTHORIZATION AUTORISATION
CLERK COMMIS

5 46990

307611 M00081
BIG HORN MOTEL
WINONA ALTA 6609
737072 CX0030

24 00	AMOUNT MONTANT
/	TAX TAXE
	TIPS POURBOIRE
	TOTAL

CHARGEX SALES DRAFT
FACTURE

BILL NO DE NOTE
DATE 04/11/78

CARDHOLDER WILL PAY TO THE BANK WHICH ISSUED THE CHARGE CARD PRESENTED HERewith THE AMOUNT SHOWN ABOVE IN ACCORDANCE WITH THE BANK'S AGREEMENT WITH THE CARD HOLDER.

LE DÉTENTEUR DE CARTE PAIERA À LA BANQUE QUI A ÉMIS LA CARTE ICI PRÉSENTÉE, LE MONTANT INDICÉ CI-DESSUS, CONFORMÉMENT AUX CONDITIONS RÉGISSANT L'ÉMISSION DE CETTE CARTE AVEC LA BANQUE ÉMETTRICE.

4510 502 142 064

04/80 BWS

RENE TRIFAUX-SR

AUTHORIZATION NO. - NO D'AUTORISATION	
BILL NO. DE NOTE	CLERK - COMMIS
DATE 7/15/78	

5 937820

VALHALLA RESTAURANT
14 X 4625 QUEBEC ST BC
9320512115 AX
039446 CX0040

Room

44 00	AMOUNT MONTANT
2 20	TAX TAXE
	TIPS POURBOIRE
46 20	TOTAL

SALES DRAFT - FACTURE

SIGNATURE X *René Trifaux*



CARDHOLDER WILL PAY TO THE BANK WHICH ISSUED THE CHARGE CARD PRESENTED HERewith THE AMOUNT SHOWN ABOVE IN ACCORDANCE WITH THE BANK'S AGREEMENT WITH THE CARDHOLDER. LE DÉTENTEUR DE CARTE PAIERA À LA BANQUE QUI A ÉMIS LA CARTE ICI PRÉSENTÉE, LE MONTANT INDICÉ CI-DESSUS, CONFORMÉMENT AUX CONDITIONS RÉGISSANT L'ÉMISSION DE CETTE CARTE AVEC LA BANQUE ÉMETTRICE.

CUSTOMER COPY - COPIE DU CLIENT

CANADA
POSTAL SERVICE

26

• A 0010.71 T

Pr • 0.000.41

Pr • 0.001.03

Gr • 0.001.09

Gr • 0.005.05

Pr • 0.001.45

Pr • 0.001.09

Pr • 0.000.59

0146 2 Jun 76

Thank You

#71

QUESNEL 8

ROOM NO.

~~244~~ R. TRIFAU

19.00
950

TRAVELODGE M.T.

224 ST. MARYS, D.C.
BUSINESS (800) 537-1180
TOLL FREE (12/804) 205-6221

TEL. NO.

142 MT PLEASANT DR

19091

CAMROSE ALBERTA.

FROM

FIP

DR. TIC. 607959

TO

BALANCE FORWARD

1		1		
2		2		019.00 ROOM
3		3		000.95 TAX
4		4		000.50 LOCL
5		5		
6		6	555692E-1	020.45 BAL
7		7		
8		8		020.45
9		9		020.45 PAID
10		10		
11		11	555919E-2	000.00 BAL
12		12		
13		13		
14		14		
15		15		
16		16		
17		17		
18		18		
19		19		
20		20		
21		21		
22		22		
23		23		
24		24		
25		25		
26		26		

*Thank you
Alice*

ACCOUNT PAID BY

- CASH
- AMEX
- CHARGE X
- DINERS
- MASTEC
- CHARGE

Regardless of charge instructions, the undersigned guest acknowledges the above as a personal indebtedness.

CHARGE TO

4510 502 142 064

ADDRESS

SIGNATURE

PHONE MESSAGE

DAY

NIGHT

4510 502 142 064

4510 502 142 064

29

04/80 BVB

04/80 BVB

RENE TRIFAUX-SR

RENE TRIFAUX-SR

AUTHORIZATION NO. - NO D'AUTORISATION
BILL NO. DE NOTE
DATE 8/3

BILL NO. DE NOTE	CLERK - COMMISS
DATE	M / D / Y-A

TETE-JAUNE THE LODGE V. JENONT BC 704446 CX0030

TRAVEL LODGE 91463 9752860907 PORT 2052107691 MOODY 00678052 0159259

18-178

5 644413

5 0104
22 00
1 10

20.45	AMOUNT MONTANT
	TAX TAXE
	TIPS POURBOIRE
	TOTAL

SALES DRAFT - FACTURE
SIGNATURE X *R Trifaux*
CHARGE X

SALES DRAFT - FACTURE
R Trifaux

ALL ESTIMATES ARE COMPANY DOES NOT LEFT FOR REPAIRS, S IN UNITS. UNITS DRY

QUAN	PART NO.	DESCRIPTION
		1 wheel make
		1 wheel make
		1 wheel make

519 2208 0337 439

1099 BMTL 05/79 RENE TRIFAUX

CLERK - COMMISS AUTH NO. NO D'AUTO
IDENTIFICATION
DATE 11/5/78

5851641

SERVICES	1200
TAX TAXE	60
TIP POURBOIRE	
TOTAL	1260

MONAD ENTERPRISES LTD CLINTON BC 604157 CX0030

SALES DRAFT - FACTURE
SIGNATURE X *R Trifaux*
CHARGE X

4510 502 142 064

04/80 BVB

RENE TRIFAUX-SR

AUTHORIZATION NO. - NO D'AUTORISATION
BILL NO. DE NOTE
DATE 07/08/78

5 337919

1785	AMOUNT MONTANT
310	TAX TAXE
	TIPS POURBOIRE
2095	TOTAL

VALHALLA DE TAU ARI 4625 QUEBEC BC 20512115 AX 039446 CX0040

SALES DRAFT - FACTURE
SIGNATURE X *R Trifaux*
CHARGE X

CUSTOMER COPY COPIE DU CLIENT

PRODUCTS	QTY.	PRICE	AMOUNT
GASOLINE			
MOTOR OIL			
TOTAL			66.90

CREDIT CARD INVOICE

TAX	
TOTAL	66.90

VEHICLE LICENSE 2FB 234 H88L
DRIVER'S LICENSE 607959 H88L

SIGNATURE *R Trifaux*

AMOUNT THE PRINTED AMOUNT MUST AGREE WITH THE INVOICE TOTAL. PAYMENT IS DUE UPON RECEIPT OF STATEMENT.



Shell Canada Limited



CHARGE CARD PRESENTED HEREWITH THE AMOUNT ABOVE IN ACCORDANCE WITH THE BANK'S AGREEMENT WITH THE CARDHOLDER. LE DETENTEUR DE CARTE PAIERA A LA BANQUE UN ACHIS LA CARTE PRESENTEE LE MONTANT INDIQUE CI DESSUS, CONFORMEMENT AUX CONDITIONS REGISSANT LES MONTANTS DE CETTE CARTE.

AMOUNT	PROMISED
28.95	
1.45	
66.40	

DATE Aug 2 1978



BONDAR-CLEGG & COMPANY LTD.

30

764 BELFAST ROAD, OTTAWA, ONTARIO, K1G 0Z5 PHONE: 237-3110 TELEX: 053-3548

Mr. R. Trifaux
2 - 142 Mount Pleasant Drive
P. O. Box 1384
Camrose, Alberta T4V 2L7

INVOICE: A 8163
DATE: January 18, 1978
REPORT NO: A28 - 21
PROJECT:

W. O. no. B 3472

3 Gold Assays @ \$ 5.00 \$ 15.00

*note: See other invoices from Laboratories at the
end*

aja

ACME ANALYTICAL LABORATORIES LTD.

Assaying & Trace Analysis

Telephone: 299-5242

To Mr. R. Trifaux,
P. O. Box 1384
Camrose, Alberta. T4V 2L7

6455 Laurel Street * Burnaby, B.C. V5B 3B4

File No. 8221

Type of Samples Rocks

Disposition _____

ASSAY CERTIFICATE

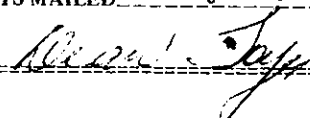
No.	Sample	Ba%	F %	S.G.		No.
1	No2-BI	.01	.05	2.88		1
2	No3-BI	.01		2.84		2
3	No4-BI	.01	.07	2.90		3
4						4
5						5
6						6
7						7
8						8
9						9
10						10
11						11
12						12
13						13
14						14
15						15
16						16
17						17
18						18
19						19
20						20

All reports are the confidential property of clients.

DATE SAMPLES RECEIVED May 8, 1978

DATE REPORTS MAILED May 15, 1978

ASSAYER



DEAN TOYE, B.Sc.
CHIEF CHEMIST
CERTIFIED B.C. ASSAYER

BONDAR-CLEGG & COMPANY LTD.

1500 PEMBERTON AVE., NORTH VANCOUVER, B.C. PHONE: 985-0681 TELEX: 04-54554

Geochemical Lab Report

F,W;Basic Fusion

Extraction Cu,Pb,Zn,Ag,Ni;Hot Aqua Regia Report No. 28 - 328

F; Specific Ion W; Colourimetric

Method Cu,Pb,Zn,Ag,Ni;Atomic Absorption Ba;X.R.F. From Mr. R. Trifaux

Fraction Used _____ Date June 16, 19 78

SAMPLE NO.	Cu ppm	Pb ppm	Zn ppm	Ag ppm	Ni ppm	W ppm	F ppm	Ba ppm	REMARKS
Iscal Creek 1	58	10	208	1.9	-	-	230	-	
East of Do-Do Creek #2 2	67	6	258	1.6	-	-	175	-	"
Do-Do Creek #2 1	44	13	139	1.4	-	-	-	-	
2	-	-	154	-	284	-	-	-	
3	-	-	128	-	-	-	-	-	
4	-	-	125	-	324	-	-	-	
5	-	-	146	-	-	-	280	-	
6	-	-	130	-	289	-	230	830	
7	-	-	110	-	334	-	200	570	
8	-	-	105	-	-	-	220	620	
9	-	-	117	-	320	-	240	-	
10	36	13	108	1.2	314	6	-	-	

ACME ANALYTICAL LABORATORIES LTD.

Assaying & Trace Analysis

Telephone: 299-5242

To

Mr. R. Trifaux
Box 1384
Camrose Alta
T4V 2L7

6455 Laurel Street * Burnaby, B.C. V5B 3B4

File No. 8671

Type of Samples Rocks

Disposition _____

ASSAY CERTIFICATE

No.	Sample	Cu%	Zn%	Pb%	Mo%	Ag oz/ton	Au oz/ton	No.
1	No 1	.04	.01	.03	.001	.02	.001	1
2	No 2	.04						2
3								3
4								4
5								5
6								6
7								7
8								8
9								9
10								10
11								11
12								12
13								13
14								14
15								15
16								16
17								17
18								18
19								19
20								20

All reports are the confidential property of clients.

DATE SAMPLES RECEIVED August 17, 1978

DATE REPORTS MAILED August 22, 1978

ASSAYER Dean Toye

DEAN TOYE, B.Sc.
CHIEF CHEMIST
CERTIFIED B.C. ASSAYER

To: R. Trifaux

REPORT No A28 - 811 40.

PAGE No. 1

BONDAR-CLEGG & COMPANY LTD.

DATE: October 4, 1978

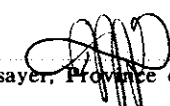
751 Clarke Road
Coquitlam, B.C.
V3J 3Y3

Samples submitted: September 15, 1978
Results completed: October 4, 1978

CERTIFICATE OF ASSAY

I hereby certify that the following are the results of assays made by us upon the herein described ore samples.

MARKED	GOLD		SILVER	BaSO ₄	MgO	CaO	Pb	Zn			TOTAL VALUE PER TON (2000 LBS.)
	Ounces per Ton	Value per Ton	Ounces per Ton	Percent	Percent	Percent	Percent	Percent	Percent	Percent	
1				0.46	14.0	19.0	-	-			
2				-	-	-	0.02	0.04			


Registered Assayer, Province of British Columbia

To: R. TrifauxREPORT No A28 - 1001PAGE No. 1

BONDAR-CLEGG & COMPANY LTD.

DATE: October 30, 1978751 Clarke Road
Coquitlam, B.C.
V3J 3Y3Samples submitted: October 25, 1978
Results completed: October 30, 1978

CERTIFICATE OF ASSAY

I hereby certify that the following are the results of assays made by us upon the herein described ore samples.

MARKED	GOLD		SILVER	Cu	Pb	Ba					TOTAL VALUE PER TON (2000 LBS.)
	Ounces per Ton	Value per Ton	Ounces per Ton	Percent	Percent	Percent	Percent	Percent	Percent		
1	0.020		0.17	0.01	0.01	0.21	<i>7000-100</i>			<i>7000-100</i>	
2	-		0.06	-	0.01	-	<i>7000-100</i>				



Registered Assayer, Province of British Columbia

R. Trifaux; Coquitlam, British Columbia.

Assessment works during April 1978 to April 1979

Cariboo Mining Division, British Columbia.

Statement of Qualifications

Notes: The following four pages are a reproduction of the 1977-1978 statement of qualifications presented to the Ministry of Mines in Victoria with the assessment works of that year.

The copies of the diplomas presented with the 1977-1978 statement are not repeated with this statement.

1. Trillick, P. P. Box 1384, Canmore, Alberta, T4V 2H7
Assessment works during April 1977 to May 1978

Cariboo Mining District, British Columbia.

Prospecting Report.

Statement of Qualification, Mineral Act-Section 9-(5)

Enclosed are 3 diplomas, certificate, showing the mining courses taken in Europe.

- I from the technical school of Chatelet.
- I from the technical school of Famenne.
- I from the Université of Charleroi.

In the schools I learned about the general geology, eruptive formations, sedimentary formations and orogeny. The nature of the elements contained in the eruptive rocks, sedimentary rocks and their minerals. Acid and basic formations.

I had the privilege to go in the mines with a university professor who taught me fossils which determine the different horizons in the coal formations.

I learned prospecting and exploration working for the following Companies in Africa:

- 1-La Compagnie Minière des Grands Lacs Africains, Bruxelles.
- 2-La Compagnie Miradi. (Affiliated to the previous Company)
- 3-Herion Explorations Ltée. Central Africa.

I worked for the Companies for a period of nine years. I prospected the massifs (granitic) of East Zaire and Ruanda-Burundi; for cassiterite, wolframite, columbite, columbo-tantalite, tantalite, beryllium, with success.

Following is the method used by myself to locate and calculate the reserves of the Remera Tin deposit:

Systematic prospecting based on test pitting (analyses of gravel, bed-rock in pits)

- 1-Lines of pits spaced at first by 1 kilometer² in the valleys. Pits spaced at 200 meters. Discovery of Tin and Tantalite.
- 2-New grid between the 1 km lines with new pit lines spaced at 100 meters and pits at 50 meters.
- 3-Last grid of lines at 20 meters and pits at 10 meters.
- 4-Digging of pits.
- 5-Washing of overburden, top gravel, middle gravel, bottom and bed-rock up to 1 foot deep. Concentration of minerals. Weighing with precision scales.
- 6-Application of formula related to values found and thickness of gravels, overburden and areas. Reserves calculations.

Assessment works during April 1977 to May 1978

Cariboo Mining Division, British Columbia.

Prospecting Report, Statement of Qualifications (cont'd)

- 7-Topographical mapping showing the rivers and locations of lines, establishment of zones of influence in the flats and alluviums and in the oluviums.
- 8-Geological mapping showing the veins locations in the pits and the outcrops. Nature of formations. Quartz veins and granitic blocks and dykes.

I worked underground mines of tin in quartz veins on 3 levels and in open pit for the pegmatites. In Burundi I opened 3 mines containing tin (cassiterite), gold, bismuth (bismuthinite). As manager of the mines I established all the hydraulic works (dams, diversions, gates, races etc..) and installation of washing plants for the gravels. The concentration plant consisted of crushing and jigging. Here I did several prospecting increasing the reserves of the mines. All my tests for tin were done with a zinc plate, Hcl, to find the coatings (white) typical to tin.

In the Congo, I opened, a deposit of Columbite, Columbo-Tantalite, cassiterite, beryl, gold. In the clean-ups disthene, zircon, sapphires, and the prospecting to increase the reserves didn't give the expected results.

I know and recognize the basic and acidic formations; I look for if a massif has been faulted, sheared and try to determine such occurrences. For example having found limy formations where I prospected in 1975, I continued to look for skarns deposits in the vicinity. I found carbonates, siderite, barite, fluorspar, ankerite, tungstite colorations, syenite and silica associated with the metamorphic contact.

I know before coming in the Cariboo that the basic intrusive (peridotite, dunites, serpentines) may contain nickel, cobalt, silver, copper, chromite, gold, magnetite and I prospected this region for 20 years persevering in the research.

I started in Canada in 1958, prospecting and doing appraisals of placers and benches for gold for a Company. I found values of 2 and 3 dollars per cubic yard at the time when the gold was still at 35\$ per ounce. I did some research in the Leich river on Vancouver Island. The outages expected for a mine never materialized.

I do all the preliminary tests (physical and chemical) myself.

R. Trifaux. P.O. Box 1384, Camrose, Alberta, T4V 2L7
Assessment works during April 1977 to May 1978

Cariboo Mining Division. British Columbia.

Prospecting Report. Statement of Qualifications (cont'd)

Very briefly here are some works that I do:
(simple tests good for a prospector)

Copper-nitric acid, look for green solutions. sulphides.
Azurite-Hcl. Carbonate. Blue.
Malachite-Hcl-Carbonate. green.
Lime rocks-Hcl. carbonates.
Nickel. Dimethylglyoxime. Test nitric acid-ammonia-Dimethyl. powder.
Silver-Hcl. solutions. Silvery button with blowpipe.
Iron-acids for yellow solutions.
Graphite-lustre-insoluble, infusible.
Galena-solutions in nitric acid-cleavage.
Sphalerite-dissolution in Hcl.
Cadmium-yellow films on rocks. I discovered some in one deposit.
Tungstite-green films on rocks. I discovered some.
Crystals, cleavages, streaks are analyzed or done, plus magnetism,
for pyrrhotites and magnetite which I have on one of my intrusions.
I discovered soapstones which I crushed for talc and sawed
them in blades for marking.
The glitter of gold is familiar to me and its malleability.
I discovered beautiful garnets in the wall rock of a dyke in the
Cariboo. I discovered an extensive sand stone deposit.

I possess a collection of crystals from Africa and Canada.
Pyrites.
Cassiterite-colours ranging from white to black and one specimen
transparent.
Columbite, tantalite, staurodite, Pitchblende.
Malachite from Zaire. Amethyst.
Zircon-Ilmenite-Tourmaline. Graphite-Manganese. Quartz crystals.

I also have :
molybdenite-galena-chalcopyrite-phlogopite-
Pyrrhotite-Hematite-Chromite-Magnetite.
Talc-Barite-muscovite-Biotite-Vermiculite-
Asbestos (full collection from Cassiar)
Calcite-Gold-

I. Trifunak, P.O. Box 1384-Camrose-Alberta-T4V 2L7.

Assessment works during April 1977 to May 1978

- Cariboo Mining District, British Columbia.

Prospecting Report-Statement of Qualifications (cont'd)

I do my geochemical soils sampling for my orientation surveys and try to organize my prospecting according to the results. (see the results this year for Al, Cu, Ag, Cd, Ba, Fluorine, etc..C)

They are not extensive because I already know the anomalies. I am aware of the background values in interpreting the geochemical analyses. If I need help in interpreting I will go to a consultant.

I am just a prospector without any pretense in my knowledge nor my experience. I persevere in searching where I think it is necessary. This year report will confirm that my expectations were confirmed to a certain extent.

As you know by my report of 1975, I did already a geochemical survey in that year which permitted me to find a vein with different metals. Some more investigations will be done in 1978.

I spent 350.00 dollars in 1970 asking Ferro-Magnetic to do a metallurgical test of the ores of the basic intrusives.

I have been in contact with the Geological Survey of Canada and sent samples to Mr. Eckstrand, the nickel specialist in Ottawa. He replied to my letters giving informations related to the type of deposits in the Cariboo.



BOND AR-CLEGG & COMPANY LTD.

764 BELFAST ROAD, OTTAWA, ONTARIO, K1G 0Z5 PHONE: 237-3110 TELEX: 053-3548

Mr. R. Trifaux
P.O. Box 1384
Camrose, Alberta T4V 2L7

INVOICE: **B** B1040
1040

DATE: May 4, 1978

REPORT NO: A28 - 153

PROJECT:

W.O. No.: B 3750

1	Barium	Assay @ \$ 9.50	\$ 9.50
1	Fluorine	Assay @ \$14.00	<u>14.00</u>
			<u>\$ 23.50</u>

yd

THIS IS A PROFESSIONAL SERVICE
ACCOUNTS DUE WHEN RENDERED



BONDAR-CLEGG & COMPANY LTD.

764 BELFAST ROAD, OTTAWA, ONTARIO, K1G 0Z5 PHONE: 237-3110 TELEX: 053-3548

Mr. R. Trifaux
P. O. Box 1384
Camrose, Alberta
T4V 2L7

B 1015
INVOICE: **1015**
DATE: April 28, 1978
REPORT NO: 28 - 146
PROJECT:

W. O. No. B 3803

11	Lead & Zinc	Analyses	@ \$ 2.05	\$ 22.55
7	Fluorine	Analyses	@ \$ 3.50	24.50
11	Barium	Analyses	@ \$ 3.00	<u>33.00</u>
				<u>\$ 80.05</u>

Handwritten note:
CASH PAID
CAMROSE

sj




BONDAR-CLEGG & COMPANY LTD.

764 BELFAST ROAD, OTTAWA, ONTARIO, K1G 0Z5 PHONE: 237-3110 TELEX: 053-3548

Handwritten notes:
2. 10/11/78
3. 10/11/78
4. 10/11/78

Mr. R. Trifaux
P. O. Box 1384
Camrose, Alberta
T4V 2L7

INVOICE:  B 1054
1054
DATE: May 5/78
REPORT NO: 28 - 156
PROJECT:

W. O. No. B3814

10/11/78

20	Fluorine	Analyses	@ \$ 3.50	\$ 70.00
20	Zinc	Analyses	@ \$ 1.30	26.00
4	Barium	Analyses	@ \$ 3.00	<u>12.00</u>
				<u>\$ 108.00</u>

sj a

THIS IS A PROFESSIONAL SERVICE
ACCOUNTS DUE WHEN RENDERED

ACM ANALYTICAL LABORATORIES LTD.

6455 LAUREL STREET., BURNABY, B.C. V5B 3B4

PHONE: 299-5242

May 15, 1978

File 8221

Mr. R. Trifaux,
P. O. Box 1384
Camrose, Alberta T4V 2L7

TERMS:

NET TWO WEEKS INTEREST AT
1 1/2% PER MONTH CHARGED ON
OVERDUE ACCOUNTS.

NUMBER	ASSAY	PRICE	AMOUNT
3	Ba assays@	\$6.00	\$18.00
2	F assays @	6.00	12.00
3	Specific gravity analyses @	2.50	7.50
			<hr/>
			\$37.50

paid after 16/5

SHIPPING CHARGES:



BONDAR-CLEGG & COMPANY LTD.

764 BELFAST ROAD, OTTAWA, ONTARIO, K1G 0Z5 PHONE: 237-3110 TELEX: 053-3548

Mr. R. Trifaux
P. O. Box 1384
CAMBRIDGE, Alberta
T4V 2L7

INVOICE: ^B 1108
B 1108

DATE: **May 15, 1978**

REPORT NO: **20 - 173**

PROJECT:

W. O. No.: **B 3852**

2	Flourine	Analyses @ \$ 3.50	\$ 7.00
2	Zinc	Analyses @ \$ 1.30	2.60
2	Sample Preparations	@ \$ 1.25	<u>2.50</u>
			<u>\$ 12.10</u>

Pat



BOND, AR-CLEGG & COMPANY LTD.

764 BELFAST ROAD, OTTAWA, ONTARIO, K1G 0Z5 PHONE: 237-3110 TELEX: 053-3548

Mr. R. Trifoux
P. O. Box 1384
CAMDEN, Alberta
T4V 2L7

INVOICE: **B** 1213
B 1213

DATE: **May 30, 1978**

REPORT NO: **28 - 223**

PROJECT:

W. O. No.: **B 3880**

1	Copper, Lead, Zinc, Silver	Analyses @ \$ 3.40	\$ 3.40
1	Sample Preparation	@ \$ 1.25	<u>1.25</u>
			<u>\$ 4.65</u>

apq

THIS IS A PROFESSIONAL SERVICE
ACCOUNTS DUE WHEN RENDERED



BOND/R-CLEGG & CO COMPANY LTD.

764 BELFAST ROAD, OTTAWA, ONTARIO, K1G 0Z5 PHONE: 237-3110 TELEX: 053-3548

Mr. R. Trifaux
P. O. Box 1384
CAMDEN, Alberta
T4V 2L7

INVOICE: **B** 1265
DATE: **June 5, 1978**
REPORT NO: **28 - 230A**
PROJECT:

W. O. No. 1 B 3887

2	Uranium	Analyses @ \$ 2.75	\$ 5.50
1	Tungsten	Analysis @ \$ 3.25	<u>3.25</u>
			<u>\$ 8.75</u>



BOND AR-CLEGG & COMPANY LTD.

764 BELFAST ROAD, OTTAWA, ONTARIO, K1G 0Z5 PHONE: 237-3110 TELEX: 053-3548

Mr. R. Trifoux
P. O. Box 1384
CANOON, Alberta
T4V 2L7

B 1530
INVOICE: B 1530

DATE: June 27, 1978

REPORT NO: 28 @ 328

PROJECT:

W. O. No.: B 8248

12	Zinc	Analyses @ \$ 1.30	\$ 15.60
4	Lead	Analyses @ \$ 0.75	3.00
4	Copper	Analyses @ \$ 0.60	2.40
4	Silver	Analyses @ \$ 0.75	3.00
6	Nickel	Analyses @ \$ 0.60	3.60
7	Flourine	Analyses @ \$ 3.50	24.50
3	Barium	Analyses @ \$ 3.00	9.00
1	Tungsten	Analysis @ \$ 3.25	3.25
12	Sample Preparations	@ \$ 0.35	<u>4.20</u>
			<u>\$ 68.55</u>

ACME ANALYTICAL LABORATORIES LTD.

6455 LAUREL STREET., BURNABY, B.C. V5B 3B4

PHONE: 299-5242

August 22, 1978

File 8671

Mr. R. Trifaux
Box 1384
Camrose Alta
T4V 2L7

TERMS:

NET TWO WEEKS INTEREST AT
1 1/2% PER MONTH CHARGED ON
OVERDUE ACCOUNTS.

NUMBER	ASSAY	PRICE	AMOUNT
1	Cu, Zn, Pb, Ag, Mo, & Au Assay @	\$ 19.75	\$ 19.75
1	Cu Assay @	4.75	4.75
	C.O.D. Charges		\$ 24.50
			1.00
			\$ 25.50
	SHIPPING CHARGES:		



BONDAR-CLEGG & COMPANY LTD.

764 BELFAST ROAD, OTTAWA, ONTARIO, K1G 0Z5 PHONE: 237-3110 TELEX: 053-3548

B. Trifan
751 Clarke Road
Coquitlam, B.C.
V3J 3Y3

B 3405
INVOICE: **B 3405**
DATE: **October 4, 1978**
REPORT NO: **A28 - 811**
PROJECT:

W. O. No. B 9864

1	Lead	Assays	@ \$ 5.50	\$ 5.50
1	Zinc	Assays	@ \$ 5.50	5.50
1	H ₂ SO ₄	Assays	@ \$ 9.50	9.50
1	MgO	Assays	@ \$ 8.50	8.50
1	CaO	Assays	@ \$ 7.00	<u>7.00</u>
				<u>\$ 36.00</u>

1h

To: Mr. R. Trifoux

REPORT No A28 - 153 30

PAGE No. 1

BONDAR-CLEGG & COMPANY LTD.

DATE: May 4, 1978

P.O. Box 1384
Camrose, Alberta T4V 2L7

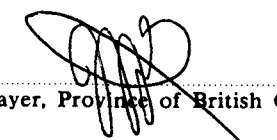
Sample submitted: April 27, 1978
Result completed: May 4, 1978

CERTIFICATE OF ASSAY

I hereby certify that the following are the results of assays made by us upon the herein described ore samples.

MARKED	GOLD		SILVER	B	BeSO ₄ *	F					TOTAL VALUE PER TON (2000 LBS.)
	Ounces per Ton	Value per Ton	Ounces per Ton	Percent	Percent	Percent	Percent	Percent	Percent		
Gray rock				0.05	0.14	0.02					

* calculated: Ba X 1.6793 = BeSO₄ (Skarn)


Registered Assayer, Province of British Columbia

R. Tririaux. Coquitlan, British Columbia.

Assessment works during April 1978 to April 1979.

Cariboo Mining Division, British Columbia.

Prospecting Report

Maps

Isasa group of claims:

Maps related to geochemical Analyses and Assays.

- | | |
|----------|--------------------|
| 1- Zinc. | 3-Copper-Vanadium. |
| 2- Lead. | 4-Silver. |

These maps are to 1" to 1 mile scale .

A location map is also included with a 1:50,000 scale.

Do-Do group of claims.

Map showing the geochemical survey results of analyses for

Lead. Nickel. Barium. Calcium.

Zinc. Silver. Uranium.

Copper. Fluorine. Magnesium.

Map with a 1:5000 scale.

Also one location map at 1:50,000 scale.

Purden Lake group of claims.

Map showing the assays results of chip rocks for:

Lead, Zinc, Copper, Barium, Fluorine, Molybdenum, etc..

The map is at 1:50,000 scale.

93 A/13

Scale

1:50,000

N.

122°
53'00"

72 Km

71

70

69

68

67

66

65

64

72

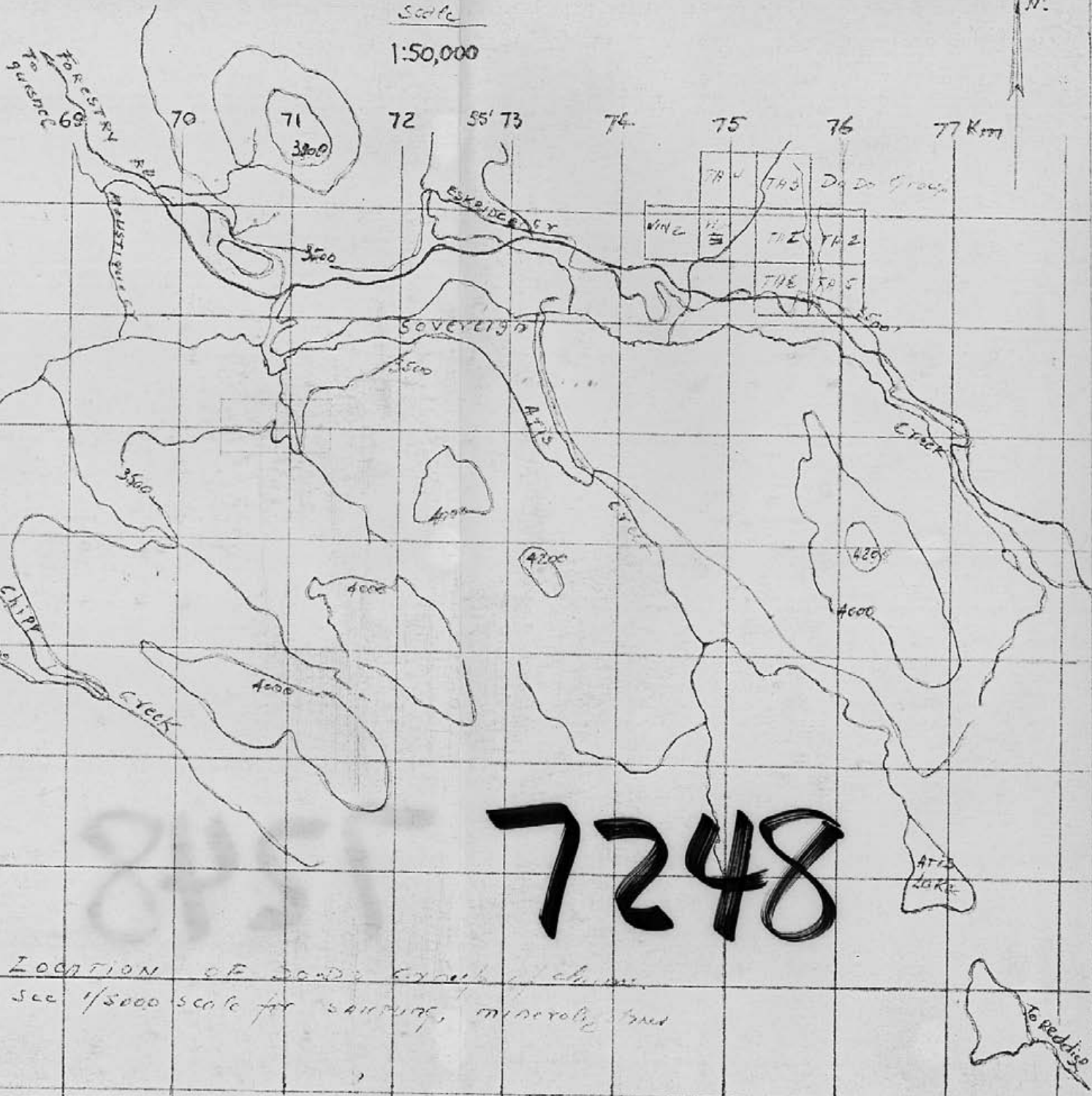
55' 73

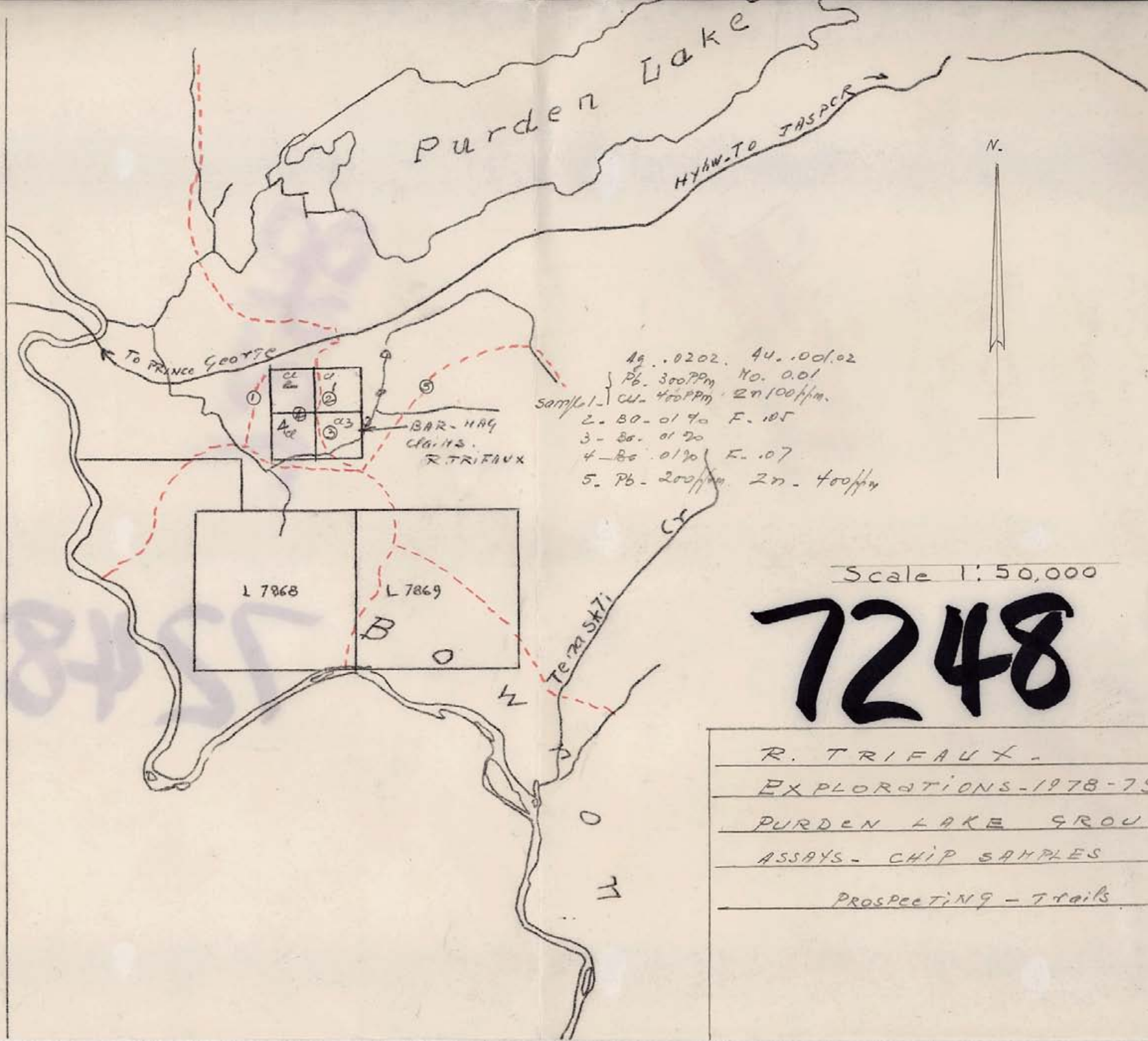
74

75

76

77 Km





Scale 1:50,000

7248

R. TRIFAU -

EXPLORATIONS-1978-79

PURDEN LAKE GROUP

ASSAYS - CHIP SAMPLES

PROSPECTING - TRAILS

93 A/13

122° 53' 00"

72 Km

71

70

69

68

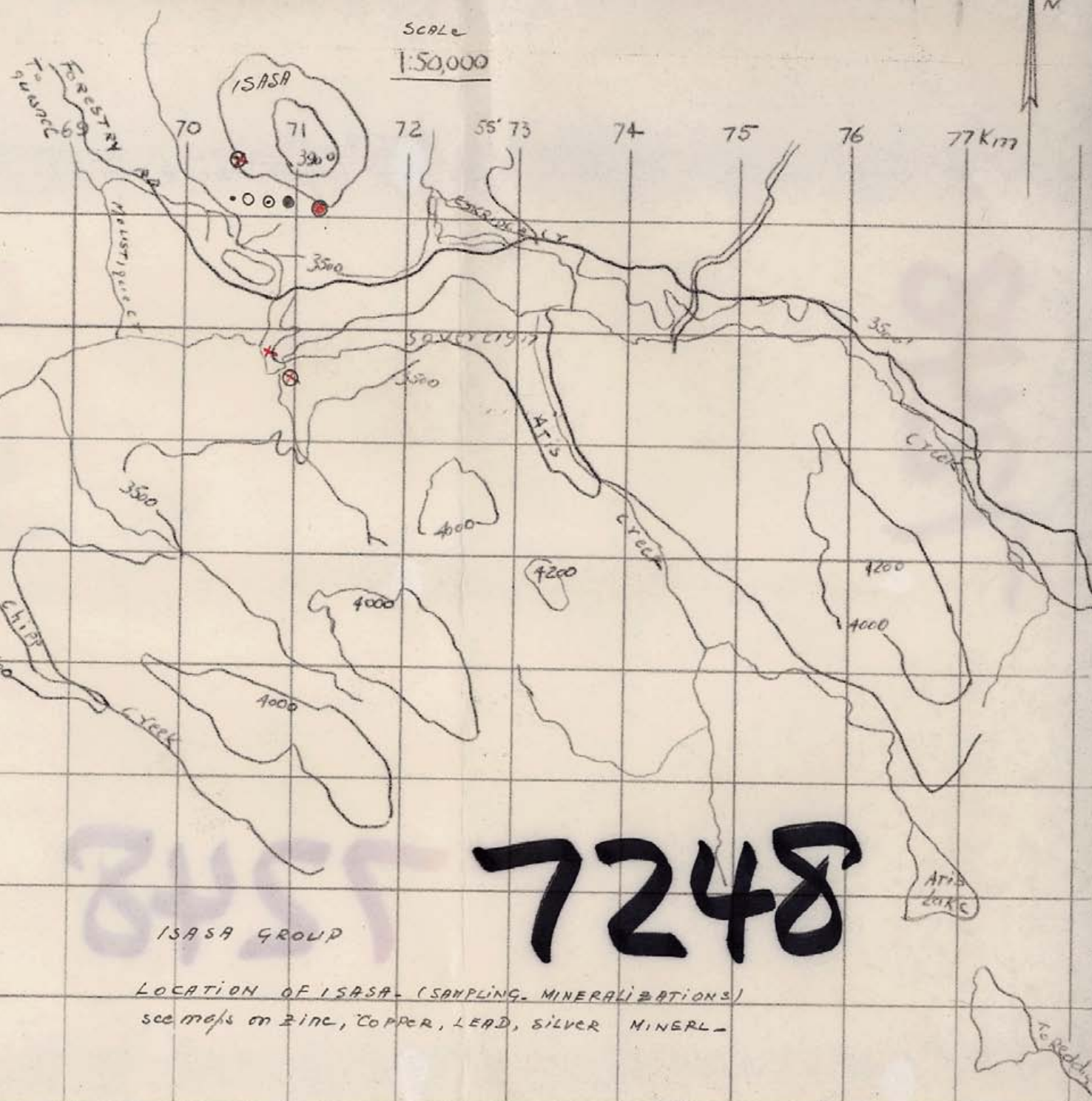
67

66

65

64

SCALE
1:50,000



ISASA GROUP

7248

LOCATION OF ISASA - (SAMPLING, MINERALIZATIONS)
see maps on ZINC, COPPER, LEAD, SILVER MINERALS



ISASA AREA.

1220

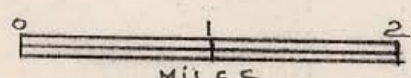
530



7248

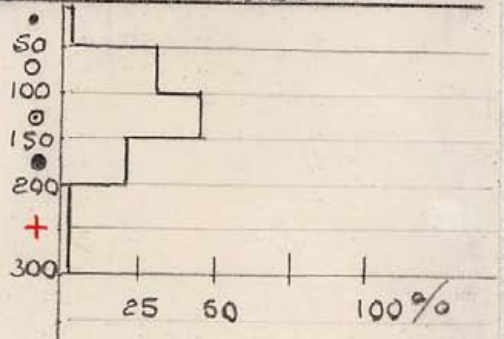
SOILS

ZINC.



1 MILE TO THE INCH
CHIPS - GOSSAN

- ⊗ 500 P.P.M
- 600 P.P.M





7248

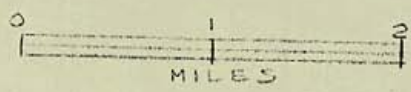
SOILS - CU

COPPER

SOILS .••

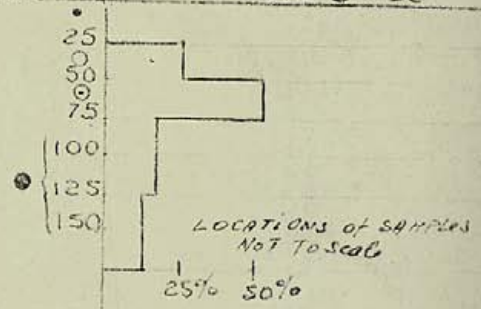
CHIPS X X

ST-SEDIMENTS ++



1 MILE TO THE INCH
CHIPS

- X 400-420 PPM (Cu)
- X 200 PPM (Cu)
- X 4200 PPM VANADIUM
- X 100 PPM (Cu)



ISASA AREA

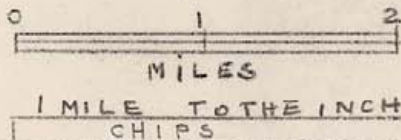
122°

530

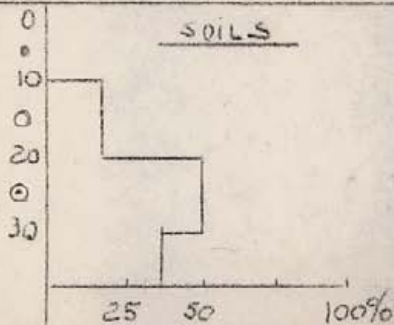


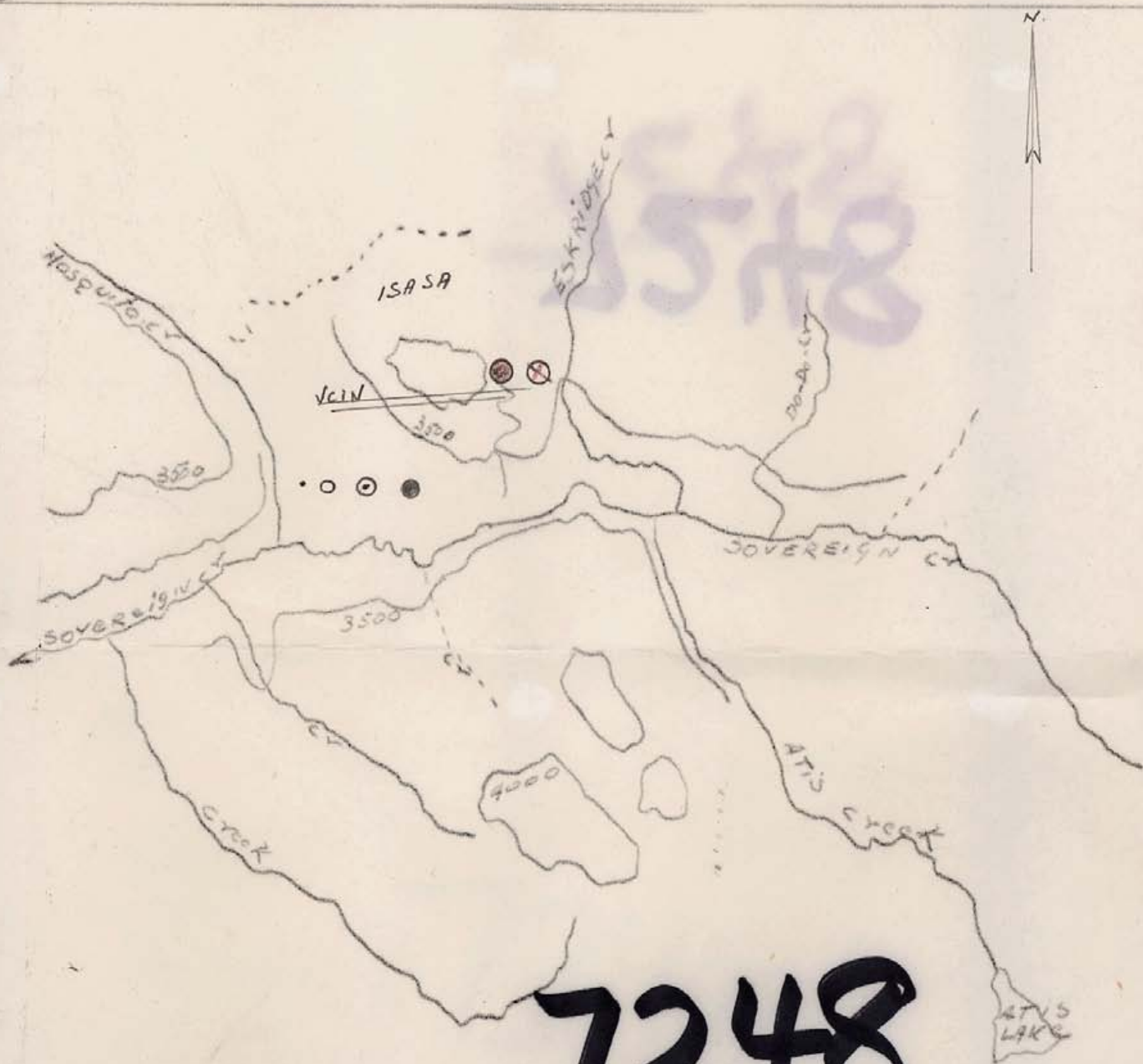
7248

LEAD



- + 100 PPM
- ⊗ 500 PPM
- 50 PPM
- 1.2% Pb.

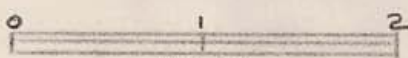




7248

SOILS.

SILVER.

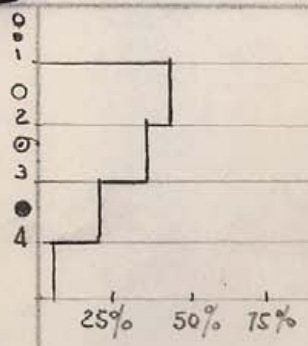


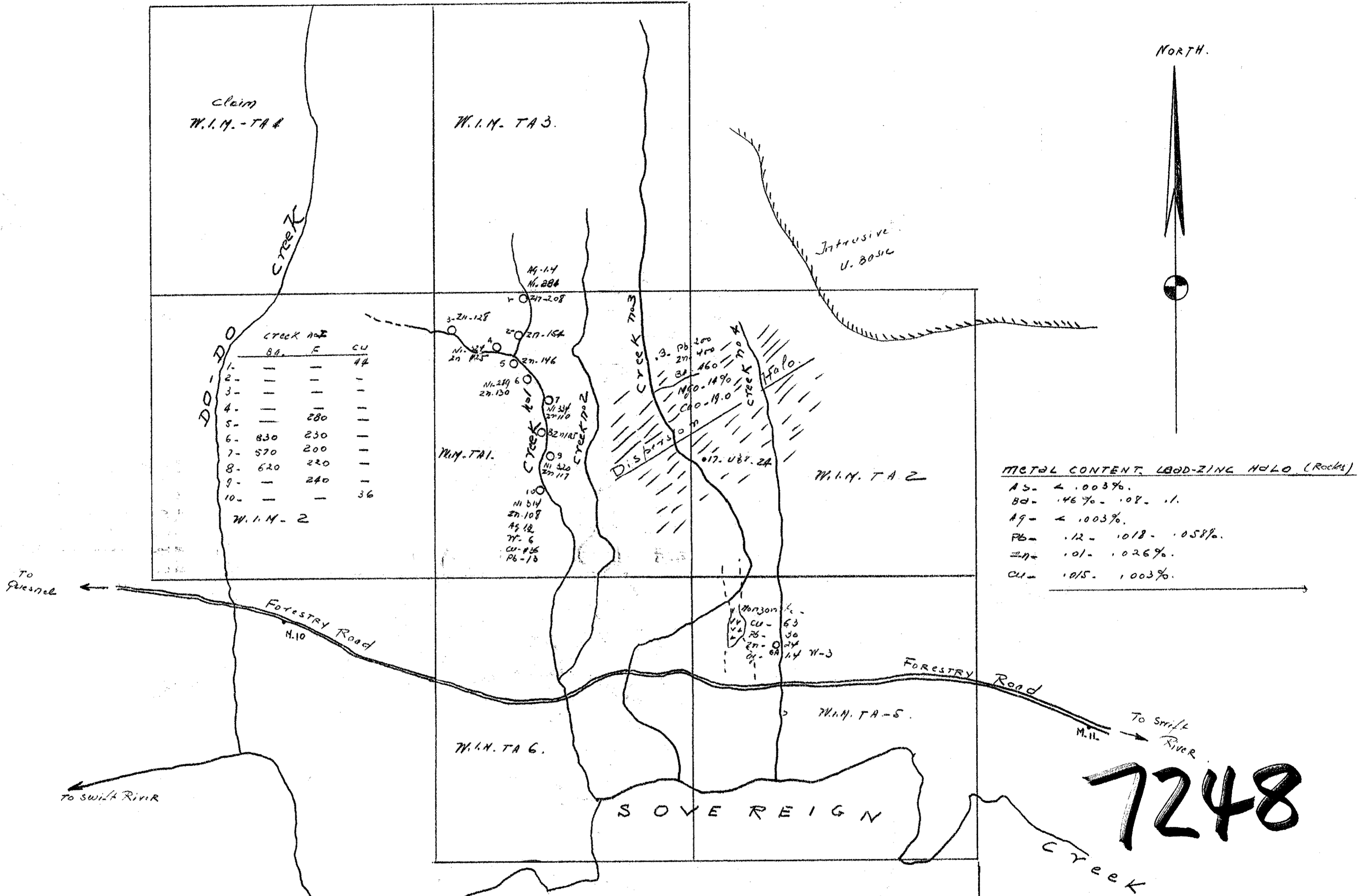
MILES

1 MILE TO THE INCH

CHIPS

- ⊗ 3.21 OZ / TON
- 0.50 OZ / TON

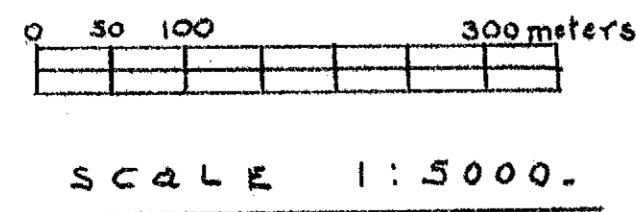




DO-DO	CREEK NO. 2	CU
1.	86	44
2.	---	---
3.	---	---
4.	---	---
5.	280	---
6.	830	230
7.	570	200
8.	620	220
9.	---	240
10.	---	36

METAL CONTENT, LEAD-ZINC HDLO (Rocks)

As	2.003%
Bd	.46% - .08%
Ag	2.003%
Pb	.12 - .018 - .058%
Zn	.01 - .026%
Cl	.015 - .003%



- NICKEL
- ZINC
- LEAD
- COPPER
- SILVER
- FLUORINE
- BARIUM
- URANIUM
- MAGNESIUM
- CALCIUM

R. TRIFAUX.

EXPLORATIONS
SOVEREIGN CREEK
DO-DO GROUP
ORIENTATION SURVEY
GEOCHEMISTRY - STREAM-SED.

© ppm - sites & ppm. *R. Trifaux*