

GEOLOGICAL AND GEOCHEMICAL
ASSESSMENT REPORT
on the
NIK MINERAL CLAIMS
Nos. 6,7 and 8
Owned by: BP Minerals Limited
INGENIKA RANGE AREA
Omineca Mining Division, B.C.
located 10 km north of Johanson Lake, B.C.
(Long. 126° 08' W., Lat. 56° 40' N.)
NTS 94D 9E

7249



By: D.K. Mustard
R.H. Wong

March 1, 1979

TABLE OF CONTENTS

	<u>PAGE NO.</u>
I. SUMMARY	1
II. INTRODUCTION	2
III. LOCATION AND ACCESS	2
IV. FIELD WORK	4
V. OVERBURDEN DRILLING	6
VI. MAPPING AND SAMPLING OF TRENCHES	11
A) Geology:	11
i) Takla volcanics	11
ii) Hornblendite	12
iii) Felsic intrusive rocks	13
iv) Alteration	14
v) Mineralization	15
B) Results	16
VII. CONCLUSIONS	17
APPENDICES	18
A) Statement of costs	19 - 21
B) Overburden drill sample analyses	22
C) Chip sample analyses	23 - 25
D) Statement of Qualifications	26

LIST OF FIGURES

<u>NO.</u>	<u>TITLE</u>	<u>PAGE NO.</u>
1.	Location map	3
2.	Claim map	5
3.	Location and results of overburden drilling	7
4.	Trenching plan	8
5.	Geologic map of the trenched area and location and copper-molybdenum analyses of chip samples from trenches	In pocket
6.	1:10,000 Location map of road access and trenches	In pocket

LIST OF TABLES

1.	Overburden drill data.	9
----	------------------------	---

I. SUMMARY

During the period June 13 to August 26, 1978, grid preparation, overburden drilling, geologic mapping, trenching and chip sampling were completed on Nik claims 6, 7 and 8.

Nik claims 6, 7 and 8 are underlain by andesitic flows and tuffs of the Upper Triassic Takla Group which have been intruded and hornfelsed by peripheral hornblendite of the Wrede Creek zoned ultramafic complex. Both have in turn been invaded by small felsic intrusions of probable Upper Jurassic age.

An area of geochemically anomalous overburden was investigated by overburden drilling, followed by trenching to bedrock. Trenches were subsequently mapped geologically and relatively continuous chip samples were obtained of the exposed bedrock.

Analysis of bedrock chip samples from trenches indicates that local bedrock is an improbable source for high contents of copper and molybdenum evident in overburden. Felsic intrusions in the area are small in size and do not display appreciable hydrothermal alteration. Although some locally strong pyrite mineralization is associated with the intrusions, copper and/or molybdenum sulphides are rare. Therefore, the potential for a porphyry copper-molybdenum deposit underlying this area is low and further work does not appear to be warranted.

II. INTRODUCTION

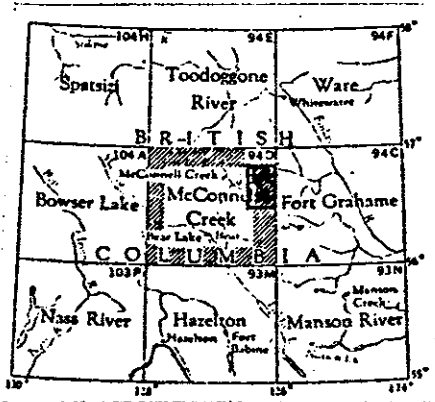
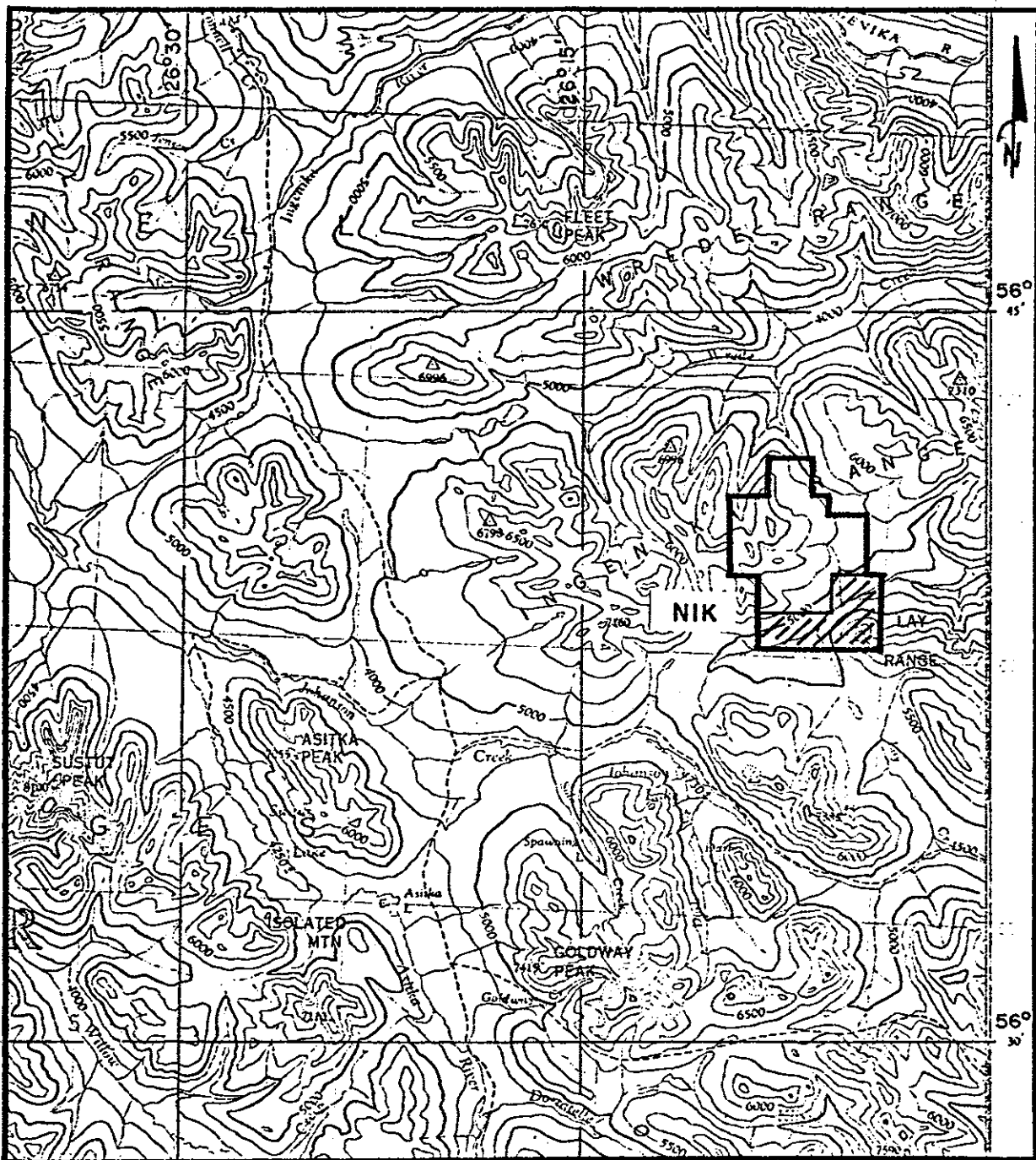
From June 13 to August 26, 1979, 4.5 line km of grid were added to previously-existing grid and overburden drilling, trenching, geologic mapping and sampling were completed over the area. Line-cutting, overburden drilling and trenching were the responsibility of various contractors while geologic mapping and sampling were undertaken by BP personnel.

The Nik claims, wholly owned by BP Minerals Limited, comprise nine adjoining claim groups. (Fig. 1). Work discussed in this report will be applied to maintenance of Nik claims 6, 7 and 8 only (Fig. 2).

III. LOCATION AND ACCESS

The Nik claims are located at the northwestern end of the Ingenika Range, approximately 10 km north-northeast of Johanson Lake at $126^{\circ} 08'$ West Longitude and $56^{\circ} 40'$ North Latitude in the Omineca Mining Division of British Columbia (Figure 1).

The claims are accessible by a 11.2 km long, 4 wheel drive quality road which traverses northeast from the Omineca road at a point 1.6 km north of the Johanson Lake airstrip. The Omineca road connects Fort St. James with Sustut River and is suitable for 2 wheel drive vehicles from July through September.



BP Minerals Limited

**TOODOGGØNE - MESILINKA, B.C.
INGENIKA - NIK
PROPERTY**

SCALE 1 inch = 250,000 Feet	NTS 94 D	FIG. 1
DATE Oct. 1978	PROJ. 505	

To accompany report:

Handwritten signature or initials

Johanson Lake (elevation 1442 m) is located 370 air kilometers northwest of Prince George, B.C. It is ice free and suitable for Beaver-size float planes from mid June to mid October.

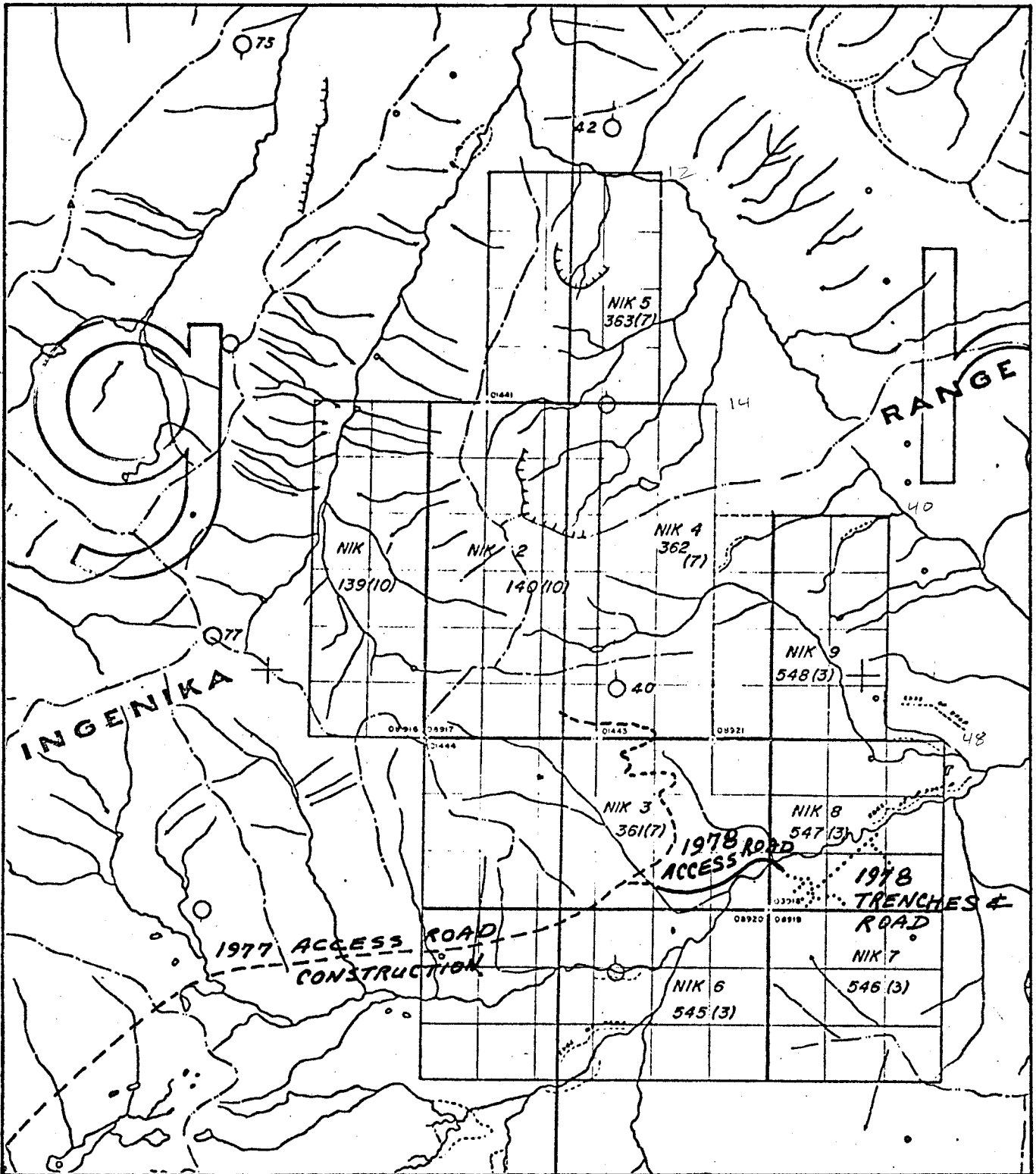
The Johanson Lake airstrip will accommodate light planes and Twin Otter aircraft (surface conditions permitting) from mid June through September.

IV. FIELD WORK

The 1978 program consisted of two phases; a preliminary phase calling for additional line-cutting and overburden drilling over the geochemically anomalous zone, and a follow-up phase consisting of trenching to bedrock with subsequent geologic mapping and sampling.

A two-man crew from Bema Industries Limited established 4.5 line km of additional grid during the period June 13 to June 16. The same crew also completed 28 overburden drill holes from June 17 - 21.

A D-8 caterpillar, contracted from Nielsen Equipment Rentals, was walked into the claim area from the end of a road completed by BP Minerals the previous year. One km of access road construction was necessary to reach the area to be trenched. In addition to the caterpillar operator, a helper, whose job it was to fall and buck any uprooted trees, also accompanied the machine. A total of



BP Minerals Limited

LOCATION of ACCESS ROAD and TRENCHES NIK CLAIMS, B.C.

SCALE 1:50,000	NTS 94 D9	FIG. 2
DATE 1978	PROJ. 505	

To accompany report:

[Handwritten signature]

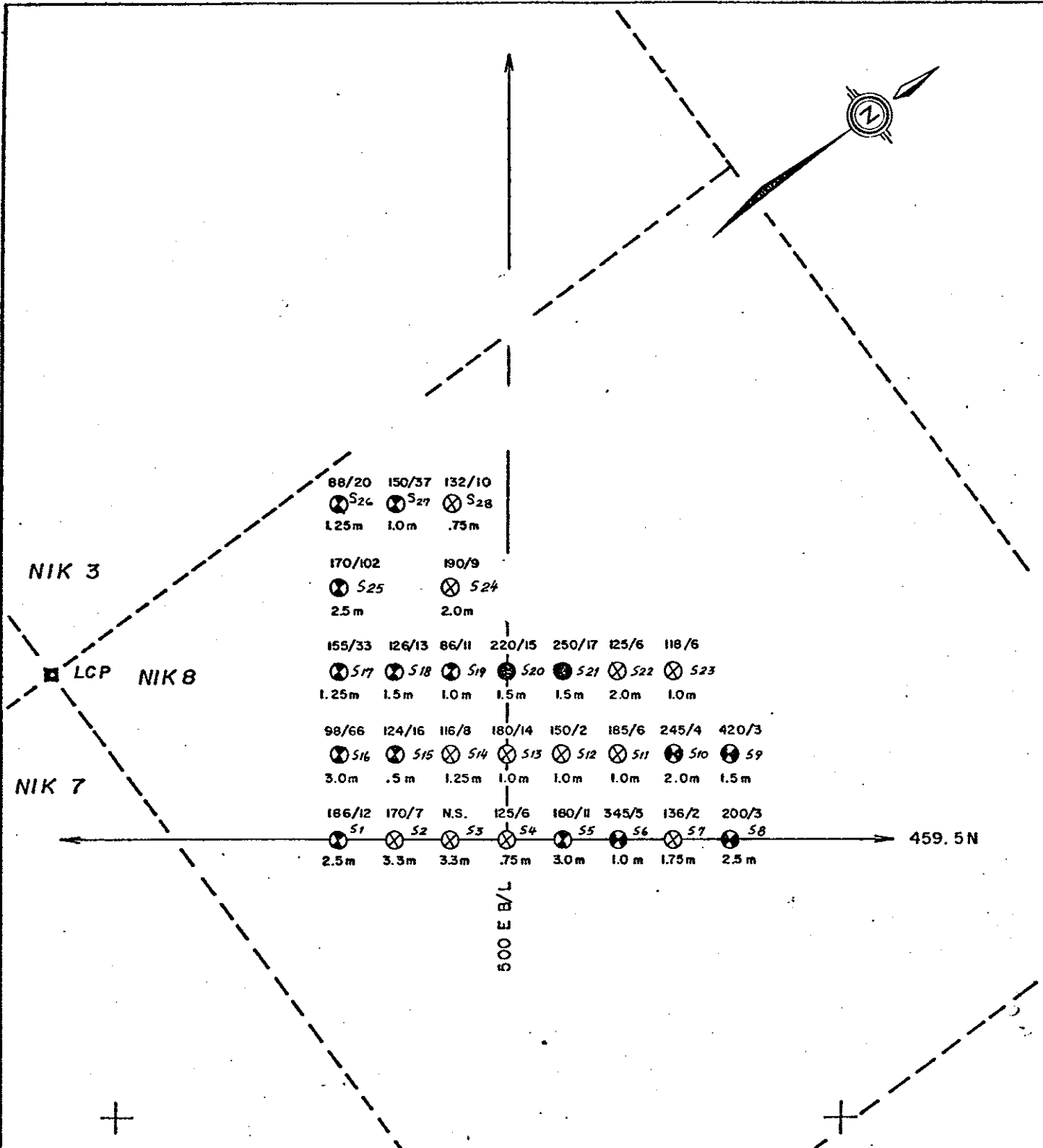
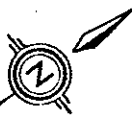
2.79 km (x 5 metres wide) of trenching/access road was completed during the period July 11 - 17 (Figs. 2 & 6)

Geologic mapping and sampling of the exposed bedrock in the trenches required 9 days for a geologist and assistant.

V. OVERBURDEN DRILLING

A total of 28 overburden drill holes were completed in order to confirm geochemical anomalies in overburden and to indicate the depth to bedrock locally. Results of this survey were used to plan subsequent trenching in a manner that would most effectively cover the anomalous zone while exposing the greatest amount of bedrock (Figures 3 and 4).

Treatment of the samples in the field consisted of air-drying them and then manually separating a representative portion of the pebble-sized fraction. These pebble-sized fragments were examined under a binocular microscope to determine their lithologies. The remaining sample was sent to Vancouver where separation and analysis of the -80 and +80 mesh fractions was done. Wherever possible, rock chip samples of the nearest outcrop to each drill hole were collected and also sent to Vancouver for analysis.



LEGEND

- ^{S28} Sample number
- x/y Cu/Mo for 80 mesh (ppm.)
- ⊗ Depth to bedrock
- ⊗ Mo anomaly (10 ppm.)
- ⊗ Cu anomaly (200 ppm.)
- ⊗ Cu - Mo anomaly

BP Minerals Limited

**1978
OVERBURDEN DRILLING
NIK CLAIMS, B.C.**

Handwritten signature

SCALE 1:10,000

NTS 94 D/9

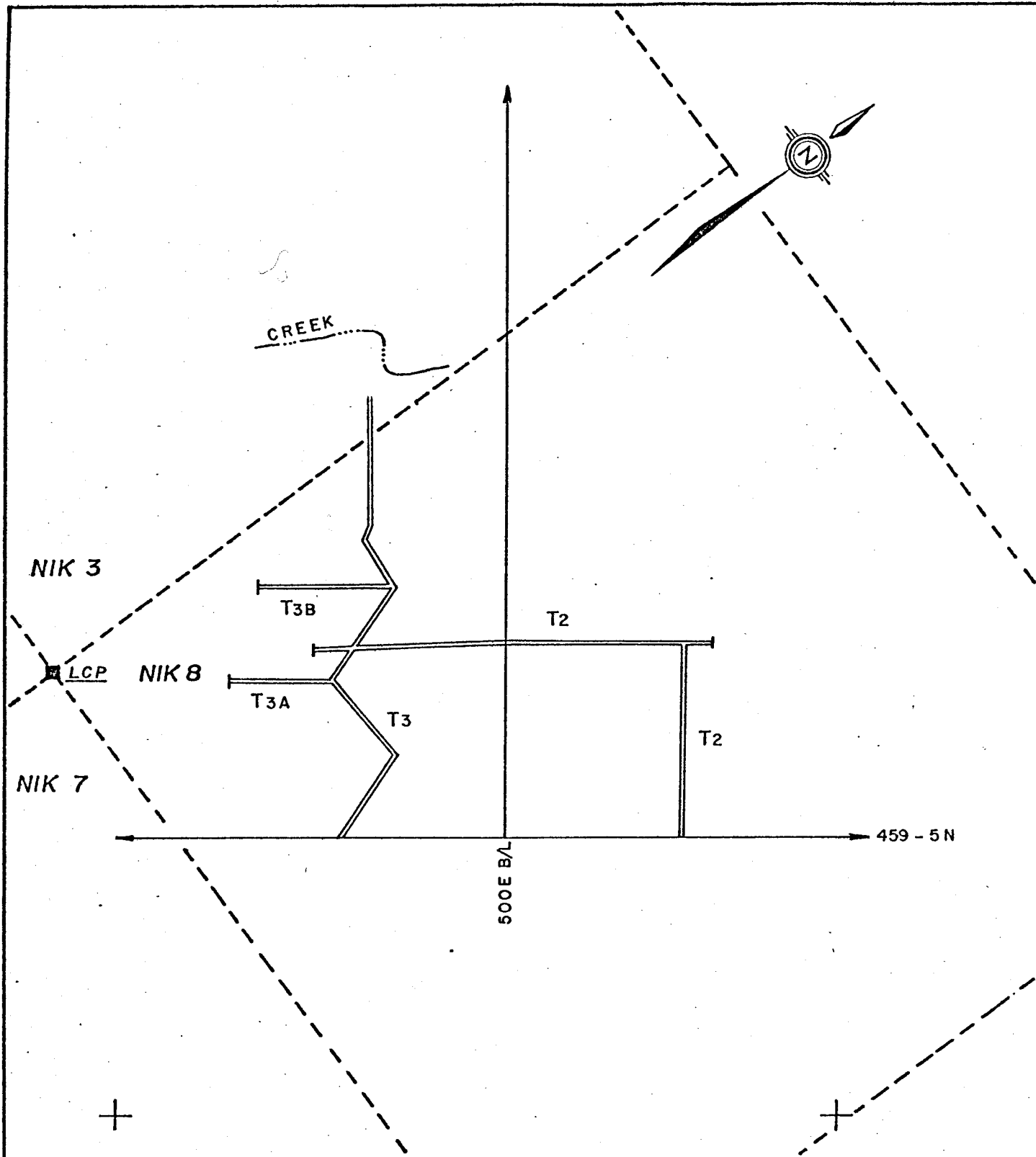
FIG. 3

DATE JAN 1979

PROJ. 505

To accompany report:

BPUR. 79.6



BP BP Minerals Limited		
1978 TRENCHING PLAN <i>[Signature]</i> NIK CLAIMS, B.C.		
SCALE 1:10,000	NTS 94 D/9	FIG. 4
	DATE JAN 1979	
To accompany report: BPVR.1979.6		

Overburden Drill Hole	-80 Mesh		+80 Mesh		Sample Lithology*	Rock Chip of Nearest o/c	Mo	Cu	Outcrop Lithology*
	Mo	Cu	Mo	Cu					
78-1	12	186	15	118	mv	-			
2	7	170	12	80	mv	-			
3		No	Sample			36-001	10	20	mv
4	6	125	7	74	mv	002	11	52	mv
5	11	180	4	96	mv	-			
6	5	345	10	88	mv/hbdite	36-003	6	52	hbdite
7	2	136	5	72	mv	-			
8	3	200	3	128	mv	-			
9	3	420	6	104	mv/fp/gd	-			hbdite
10	4	245	5	76	mv/fp	35-008	5	22	hbdite
11	6	185	6	105	mv	? -007	4	84	mv
12	2	150	2	72	mv	-006	7	64	mv
13	4	180	4	78	mv	-005	8	30	mv
14	8	116	5	58	mv	-			
15	16	124	10	45	mv/gd	35-004	5	56	mv/fp
16	66	98	27	52	mv	-			
17	33	155	10	43	mv/fp/gd	35-012	6	62	mv
18	13	126	5	43	mv	-			
19	11	86	5	46	mv	-			
20	15	220	8	62	mv	-			
21	17	250	5	106	mv	35-011	4	53	mv
22	6	135	15	42	fp	-010	3	80	mv
23	6	118	12	64	mv/fp	-			
24	9	190	10	78	fp	-			
25	102	170	50	94	mv	35-015	8	84	mv/fp
26	20	88	19	29	fp	-			
27	37	150	12	64	mv/gd	-			
28	10	132	11	46	mv/fp	-			

* mv = metavolvanic, fp = feldspar porphyry, hbdite = hornblendite, gd = granodiorite (erratics)

TABLE I. COMPILATION OF OVERBURDEN DRILL DATA

The locations, depths of overburden, and copper-molybdenum values for the -80 mesh fraction for overburden holes done in 1978 are shown in Figure 3.

Comparison of the -80 mesh and +80 mesh results for the overburden drill samples (Table I) indicates that +80 mesh values for copper are significantly lower. For molybdenum, this relationship is less evident. In general, rock chips from adjacent outcrop are also lower in copper and molybdenum than correlative -80 mesh overburden drill samples (Table I). These relationships suggest that copper and molybdenum are not derived from the local lithology (i.e. not from the exposed local lithology).

Six of the eight highest -80 mesh molybdenum results are associated with a feldspar porphyry quartz diorite lithology either in the sample coarse-fraction or in adjacent outcrop. The locations of these samples closely coincide with the centre of the molybdenum geochemical anomaly. It is therefore a strong possibility that molybdenum enhancement is directly or indirectly related to felsic intrusion in this area.

High copper values (> 200 ppm copper) of overburden drill samples partially correlate with the geochemically anomalous copper zone and also with a portion of the horn-

blendite/metavolcanic contact. The lithology of two of the anomalous drill samples indicates the presence of feldspar porphyry but associated values of molybdenum are only of background value (3 and 4 ppm molybdenum).

A very low-grade, copper-mineralizing contact effect is suggested as a possible source for the anomalous copper. Minor malachite and chalcopyrite (<1%) are evident where the hornblendite/metavolcanic contact is exposed. The inherent high copper-content of the hornblendite (118 ppm average), determined by previous lithochemistry of unmineralized hornblendite, probably downgrades the potential of this copper anomaly.

VI. MAPPING AND SAMPLING OF TRENCHES

The trenching plan was guided by the overburden drill data and the limited outcrop. Bedrock was uncovered along only 60% of the distance (Fig. 5 in pocket).

A) GEOLOGY

Three main lithologies are present within the mapped area:

i) Takla volcanics

Takla volcanics are represented by augite-rich, andesitic lapilli tuffs and flows and minor ash tuff/

argillite. Bedding is nowhere evident and individual units are not mappable.

All rocks have undergone some degree of hornfelsing, probably in response to intrusion of hornblendite. No gradation in contact metamorphism is evident within the mapped area, but outcrop 500 - 600 metres grid west is not obviously contact metamorphosed. Hornfelsed volcanics, referred to collectively as "metavolcanics", are dark grey to black in colour and very tough in nature. Augite phenocrysts, perhaps recrystallized from the original rock, are prominent and set in a generally aphanitic groundmass. Relict amygdaloidal flow clasts are sometimes evident in hornfelsed lapilli tuff.

ii) Hornblendite

Hornblendite represents the peripheral zone of the ultramafic complex and forms the grid-eastern boundary of the trenched map area. Trench 1 is believed to sub-parallel the hornblendite/metavolcanic contact to the grid-west. The contact is irregular and xenoliths of metavolcanic are evident in the hornblendite bedrock uncovered in the trench. A shallow (30° - 40°) grid-westerly dip to this contact may explain the apparently widespread hornfelsing related to the hornblendite. The main creek probably represents a faulted portion of this contact. Two directions of shearing are prominent in hornblendite and metavolcanics exposed along

porphyry with an aphanitic siliceous matrix and a low proportion of mafics often marks the edge phase. This rock also occurs as narrow dykes and sills (?) and is referred to as a siliceous dyke rock, although it may more correctly be termed a dacite. At one contact, a medium-grained, equigranular monzodiorite was noted occurring gradationally between the quartz diorite and the fine-grained porphyry.

Equigranular, medium-grained, biotite-bearing granodiorite erratics are a prominent component of the overburden in this area. In some places, large rounded boulders of granodiorite lie directly on bedrock. Some overburden drill samples include fragments of this rock type. A rock chip sample of granodiorite was taken in order to determine if the inclusion of this lithology was causing spurious results in the overburden samples.

iv) Alteration

Pervasive epidotization is prominent in the hornblendite. This may be due more to the originally very calcic nature of the interstitial plagioclase than anything else. Hornblende displays only very weak chloritization. Epidote is also evident in small shear zones.

The hornfelsed volcanics display moderate to strong development of epidote ±silica fracture envelopes and shear-fillings. Augite phenocrysts are usually unaltered. White quartz veins, some up to 15 cm in width and carrying traces of pyrite, occur within the metavolcanics. Although not abundant, their orientations define an approximately radial pattern that is centred on the anomalous molybdenum zone.

The feldspar porphyry quartz diorite displays only very weak k-feldspar alteration of the plagioclase phenocrysts. Hornblende is invariably fresh and epidote occurs in minor amounts as disseminations and fracture-coatings.

v) Mineralization

The most significant occurrences of sulphide mineralization occurs in a zone from 462.2N to 464.7N and 495E to 498E. Pyrite, predominantly on fractures, comprises from 1 - 7% of the metavolcanics. The best zone is at 464N/498E where pyrite on fractures averages over 5% in the metavolcanics and approximately 4% as disseminations in the adjacent feldspar porphyry. In other places, disseminated pyrite in the feldspar porphyry is 1%. Downslope from this zone, a trace of molybdenite was noted with pyrite on a fracture in metavolcanic rock.

7249

The hornfelsed volcanics display moderate to strong development of epidote ±silica fracture envelopes and shear-fillings. Augite phenocrysts are usually unaltered. White quartz veins, some up to 15 cm in width and carrying traces of pyrite, occur within the metavolcanics. Although not abundant, their orientations define an approximately radial pattern that is centred on the anomalous molybdenum zone.

The feldspar porphyry quartz diorite displays only very weak k-feldspar alteration of the plagioclase phenocrysts. Hornblende is invariably fresh and epidote occurs in minor amounts as disseminations and fracture-coatings.

v) Mineralization

The most significant occurrences of sulphide mineralization occurs in a zone from 462.2N to 464.7N and 495E to 498E. Pyrite, predominantly on fractures, comprises from 1 - 7% of the metavolcanics. The best zone is at 464N/498E where pyrite on fractures averages over 5% in the metavolcanics and approximately 4% as disseminations in the adjacent feldspar porphyry. In other places, disseminated pyrite in the feldspar porphyry is 1%. Downslope from this zone, a trace of molybdenite was noted with pyrite on a fracture in metavolcanic rock.

Sulphides are rare in the hornblendite, although minor pyrite and chalcopyrite were noted on fractures at the contact with the metavolcanics. Heavy pyrite was noted on one shear fracture in hornblendite.

B) RESULTS

Wherever possible, continuous chip samples of bedrock were taken over 10 metre intervals. An average of 20 chips were collected over each interval. Locations of chip samples were shown in Figure 5 (in pocket) and results are included in Appendix C.

Analysis of continuous chip samples from the trenches indicates that the molybdenum and copper content of the bedrock sampled is generally well below the anomalous levels for molybdenum and copper in soil, sediment and overburden was probably not directly derived from the underlying bedrock (i.e. not a mechanical anomaly). Sulphides associated with quartz - feldspar fragments, which were observed in overburden drill samples, must therefore only contribute a minor amount to the anomalous molybdenum - copper levels of the overburden.

Low levels of molybdenum in the trenched bedrock sampled cannot reasonably be attributed to leaching of the molybdenum because abundant pyrite in the general

area of the molybdenum geochemical anomaly precludes a basic pH environment in which molybdenum would be leached. The possibility exists that molybdenum in solution migrated downslope and was fixed in the overburden where the pH was suitably acidic to cause its concentration.

Copper analysis of the trenched bedrock sampled indicates consistently low copper content throughout the area. Therefore, like molybdenum, the anomalous levels of copper in overburden are difficult to attribute to a bedrock source in the area of trenching.

VII. CONCLUSIONS

Analysis of bedrock chip samples from trenches indicates that the local bedrock is an improbable source for the high contents of copper and molybdenum evident in overburden. Felsic intrusions in the area are small in size and do not display appreciable hydrothermal alteration. Although some locally strong pyrite mineralization is associated with the intrusions, copper and/or molybdenum sulphides are rare. Therefore, the potential for a porphyry copper - molybdenum deposit underlying this area is low and further work does not appear to be warranted.

APPENDICES

- A) Statement of Costs
- B) Overburden drill sample analyses
- C) Chip sample analyses
- D) Statement of Qualifications

APPENDIX A

STATEMENT OF COSTS

NIK MINERAL CLAIMS

NIK 6 (18 units), 545
NIK 7 (9 units), 546
NIK 8 (9 units), 547

A. PHYSICAL

Contractor: Nielson Equipment Rentals Ltd.
Fort St. James, B.C.
D8H Caterpillar & operator - \$60/hour
includes accommodation.

1. Access Road Construction - 9, 10 July, 1978 One kilometre in length by four metres wide		
Contractor - 13 hrs @ \$60/hr.		\$780
Slashing (man & chain saw) 13 hours @ \$15/hr.		195
Fuel - 13 hours @ 10 gal./hr @ \$1.35		175
		<hr/>
		\$1,150
2. Trenching and Access Road - 11 - 15, 17 July, 1978. 2.79 kilometres by 5 metres wide		
Contractor - 67 hrs @ \$60/hr.		4,020
Slashing - 67 hrs @ \$15/hr.		1,005
Fuel - 67 hrs @ 10 gal/hr @ \$1.35		904
		<hr/>
		\$5,929
		<hr/>
	TOTAL PHYSICAL	<u>\$7,079</u>

B. GEOLOGICAL AND GEOCHEMICAL SURVEYS

1. Line-cutting - 13 - 16, 18 June, 1978

4.5 Line kilometres

Contractor: Bema Industries, Langley, B.C.

2 men - 47 hours @ \$28/hr.	\$1,316
Vehicle rental 5 days @ \$10 per day	50
Survey equipment - 5 days @ \$14 per day	70
Camp equipment - 5 days @ \$12.50/ day	62
Helicopter support (Bell 206B) Northern Mountain Helicopters 1 hr @ \$350 per hour (includes fuel)	350
	<hr/>
	\$1,848

2. Geochemical (Overburden Drilling) - 17, 19,
20, 21 June, 1978

Contractor: Bema Industries

2 men (I. Johnson, C. Johnson) and drill 36.5 hours @ \$40.00 per hour	1,460
Sample analysis - Acme Analytical Lab. Ltd. - 28 samples (± 80 mesh) analyzed for molybdenum and copper @ \$4.90 per sample	137
	<hr/>
	\$1,597

3. Geological - BP Labour.

Geologist - R.H. Wong 8 July - 26 Aug/78 9 days @ \$90 per day	810
Assistant - A. Gair 8 July - 26 Aug/78 9 days @ \$45 per day	405
Accommodation 2 men - 18 man days @ \$15 per day	270
Helicopter support (Bell 206B) one hour @ \$350 per hour	350
	<hr/>
	\$1,835

4. Report Preparation

Compilation - R. Wong, 2 days @ \$90/day	\$180
Typing, drafting, printing	\$175
	<u>\$355</u>

TOTAL GEOLOGICAL AND GEOCHEMICAL SURVEYS \$5,635

Assessment Work Apportionment

Value of work	\$12,714	
Amount claimed	\$12,600	
Apply 2 years work to NIK 6 (18 units) 545	-	\$7,200
Apply 1 years work to NIK 7 (9 units) 546	-	\$1,800
Apply 2 years work to NIK 8 (9 units) 547	-	\$3,600
		<u>\$12,600</u>

APPENDIX B

Overburden drill sample analyses

ACME ANALYTICAL LABORATORIES LTD.

TO B. P. Minerals Ltd.,
405 - 1199 W. Pender St.,
Vancouver, B. C. V6E 2R1

Assaying & Trace Analysis
6455 Laurel St., Burnaby, B.C. V5B 3B4

Tel: 299-5242

File No. 8469

Type of Samples Overburden

ANALYSES CERTIFICATE

Disposition _____

-80 mesh

+80 mesh

2

No.	Sample	Mo	Cu	Mo	Cu	No.
01	NIK-78- 1	(12)	186	(15)	118	01
02	2	7	170	(12)	80	02
03	3	N.	S.			03
04	4	6	125	7	74	04
05	5	(11)	180	4	96	05
06	6	5	345	(10)	88	06
07	7	2	136	5	72	07
08	8	3	200	3	128	08
09	9	3	420	6	104	09
10	10	4	245	5	76	10
11	11	6	185	6	105	11
12	12	2	150	2	72	12
13	13	4	180	4	78	13
14	14	8	116	5	58	14
15	15	(16)	124	(10)	45	15
16	16	(66)	98	(27)	52	16
17	17	(33)	155	(10)	43	17
18	18	(13)	126	5	43	18
19	19	(11)	86	5	46	19
20	20	(15)	220	8	62	20
21	21	(17)	250	5	106	21
22	22	6	135	(15)	42	22
23	23	6	118	(12)	64	23
24	24	9	190	(10)	78	24
25	25	(102)	170	(50)	94	25
26	26	(20)	88	(19)	29	26
27	27	(37)	150	(12)	64	27
28	NIK-78-28	(10)	132	(11)	46	28
29						29
30						30
31						31
32						32
33						33
34						34
35						35
36						36
37						37
38						38
39						39
40						40

All reports are the confidential property of clients.
All results are in parts per million.

DATE SAMPLES RECEIVED July 10, 1978
DATE REPORTS MAILED July 13, 1978
ANALYST W. J. ...

APPENDIX C

Chip Sample Analyses

OVERBURDEN DRILL SAMPLE - COARSE FRACTION LITHOLOGY

Sample No.

- O/B # 1 : all volcanic/metavolcanic; mafics unaltered, one epidote vein evident, trace of disseminated pyrite.
- O/B # 2 : all volcanic/metavolcanic; mafics fresh, quartz veining with minor pyrite, disseminated and fracture-fill pyrite 1 - 2%, trace of possible chalcopyrite.
- O/B # 3 : No sample.
- O/B # 4 : all volcanic/metavolcanic; quartz-epidote envelopes moderately pervasive, some pervasive silicification, disseminated and fracture-fill pyrite 3%.
- O/B # 5 : mostly unaltered volcanic/metavolcanic with 1% disseminated pyrite; one clast is strongly chloritized with feldspar phenocrysts and disseminated limonite (intrusive?)
- O/B # 6 : all volcanic/metavolcanic; feldspar crystals more prominent (feldspar porphyry clasts?); mafics fresh, one thin barren quartz vein evident, <1% disseminated pyrite.
- O/B # 7 : all unaltered metavolcanic; 1 - 2% disseminated and fracture-fill pyrite.
- O/B # 8 : three clasts of metavolcanic with trace of pyrite; one clast of weakly epidotized fine-grained hornblendite.
- O/B # 9 : at least three lithologies present: granodiorite clasts similar to barren glacial erratics present; metavolcanic clasts showing variable pervasive epidotization; diorite-quartz diorite feldspar porphyry with weak chloritization.
- O/B #10 : metavolcanic cut by thin monzodiorite stringers and by quartz-epidote veins; no sulphides.
- O/B #11 : all metavolcanic; strong feldspar (?) veining and 2+% disseminated pyrite.

Sample No.

- O/B #12 : all metavolcanic with prominent hornblende and feldspar crystals; 1 - 2% disseminated pyrite.
- O/B #13 : all metavolcanic, some pyroclasts evident; mafics fresh, 1% disseminated pyrite.
- O/B #14 : all metavolcanic; some strong quartz [±] pyrite [±] epidote veining.
- O/B #15 : two clasts of barren granodiorite erratic; rest is metavolcanic with weak sericitization of plagioclase.
- O/B #16 : all metavolcanic; ~ 1% disseminated pyrite.
- O/B #17 : one barren granodiorite clast; one feldspar porphyry quartz diorite clast; rest is unaltered metavolcanic; no sulphides.
- O/B #18 : all metavolcanic; prominent barren quartz [±] epidote veining.
- O/B #19 : all metavolcanic; weak to moderate chloritization, ~ 1% disseminated pyrite.
- O/B #20 : all metavolcanic ?, one clast may be fine-grained porphyry; prominent barren quartz-epidote veining.
- O/B #21 : all metavolcanic; moderate quartz-feldspar veining, 1% pyrite.
- O/B #22 : most is unmineralized fine-grained feldspar porphyry; minor feldspar-veined metavolcanic.
- O/B #23 : one clast of purple volcanic (erratic), most is iron-stained feldspar porphyry, some quartz-epidote veined metavolcanic.
- O/B #24 : all feldspar porphyry quartz diorite with high percentage of groundmass; weak to moderate chloritization
- O/B #25 : all moderate chloritized metavolcanic; some strong iron-staining.

Sample No.

- O/B #26 : all feldspar porphyry quartz diorite; minor disseminated epidote, mafics fresh, <1% pyrite.
- O/B #27 : two clasts of granodiorite erratic; rest is metavolcanic with good pyrite in thin quartz veins and on fractures.
- O/B #28 : one quartz-feldspar porphyry clast (erratic?); one feldspar porphyry clast; rest is metavolcanic and quartz-epidote vein material.

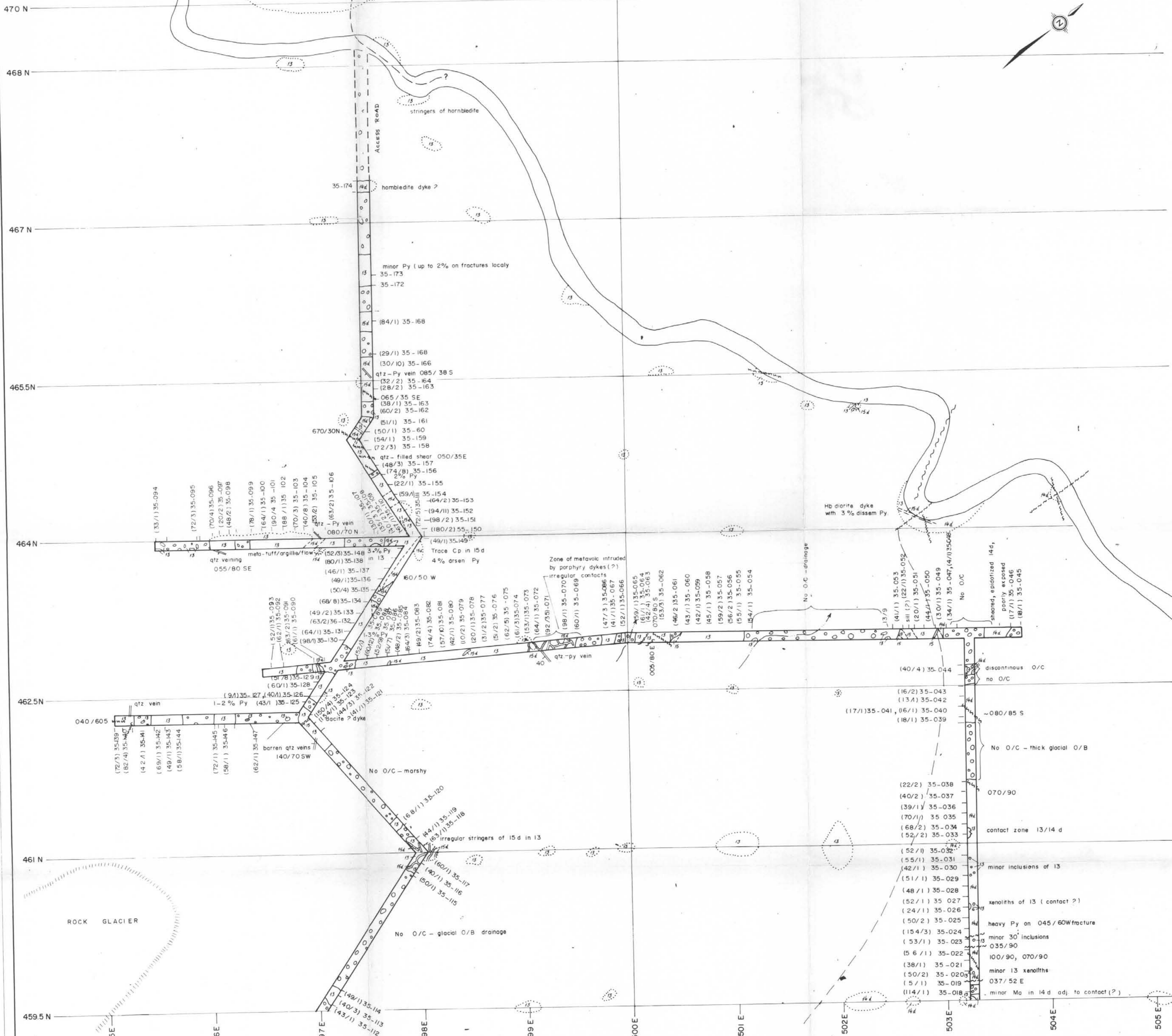
APPENDIX D

LIST OF QUALIFICATIONS

R.H. Wong:

BSc 1975 UBD (Honours Geology)

MSc (in progress) UBC



- LEGEND
- | | | | |
|-----|-------------------------|-----|--------------------------|
| 9 | (lapilli tuff) | 15 | (siliceous dykes/sills?) |
| 13 | (metavolcanic hornfels) | 15d | (porphyry dyke) |
| 14d | (hornblende) | 15a | (monzodiorite) |

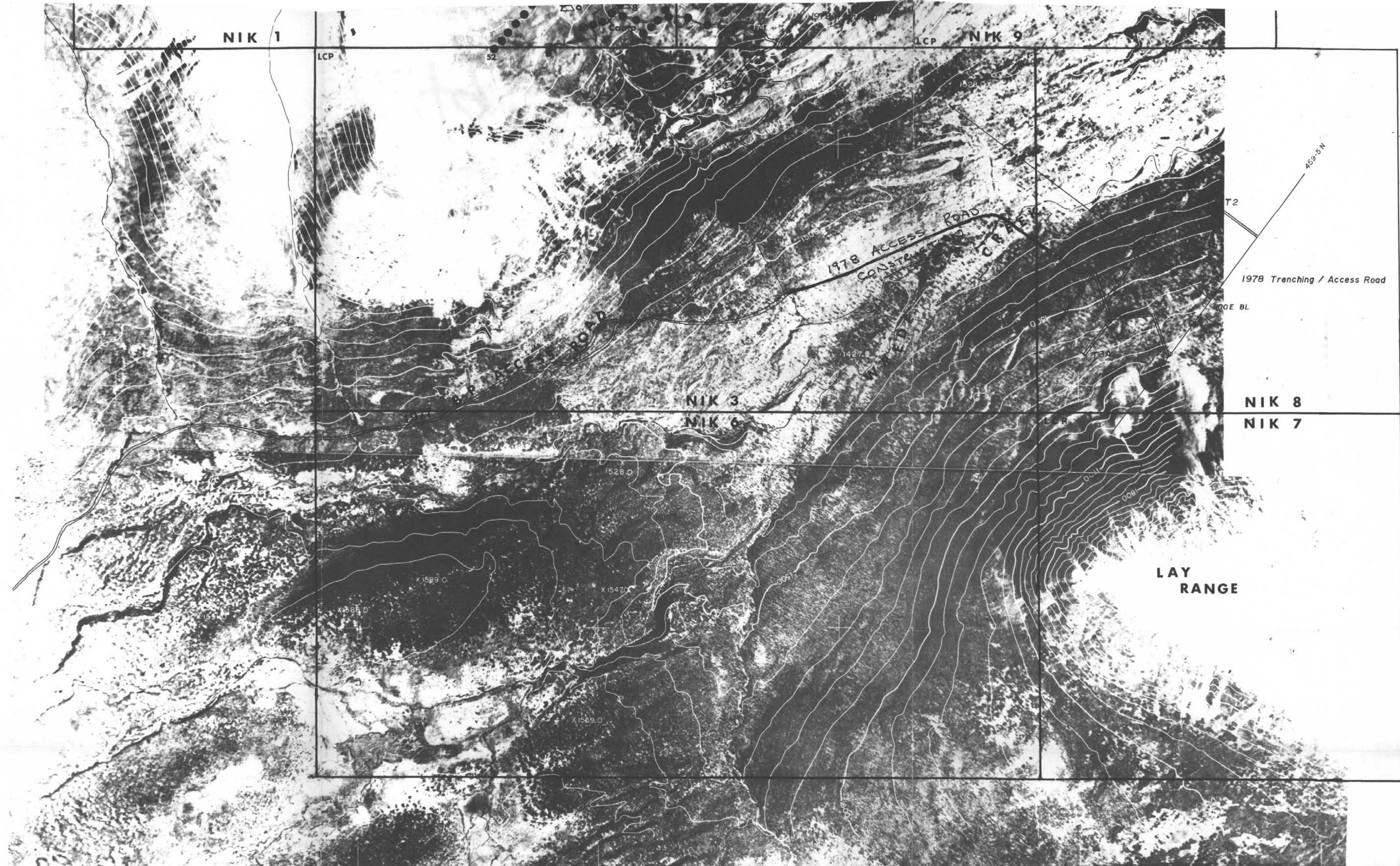
(100/10) 35-018 = (ppm Cu / ppm Mo) sample number

7249

BP Minerals Limited

LOCATION AND Cu-Mo VALUES OF CHIP
 SAMPLES FROM TRENCHED BEDROCK
 NIK CLAIMS, B.C.

SCALE 1cm = 20m	NTS 94D/9E	FIG 5
DWG NO. 79-11	DATE March 1979	PROJ. 505
To accompany report: BPVR 79-4		



LEGEND

- 1 ○ 1976 DIAMOND DRILL HOLE
- 6 △ 1977 DIAMOND DRILL HOLE
- 55 ● 1977 PERCUSSION DRILL HOLE

7249



BP Minerals Limited

**NIK
LOCATIONS MAP**

SCALE	1 : 10,000	C.I. 20m	NTS 94D/09	FIG 6
DWG. NO.	78-38	DATE	MAY 1978	PROJ. 505
To accompany report:				