

TITLE PAGE

GENERAL NATURE OF THE REPORT : DIAMOND - DRILLING

SPECIFIC CLAIMS INVOLVED : JERICO 3 M.C. #45 (1b).

MINING DIVISION : KAMLOOPS

SPECIFIC NTS LOCATION : 92 I / 7W

LATITUDE AND LONGITUDE : 50° 26' N; 120° 56' W

OWNER OF CLAIMS : NEW JERICO MINES LTD.

OPERATOR : HIGHMONT MINING CORPORATION LTD.

AUTHOR : A.J. REED, P. ENG.

DATE SUBMITTED : 04th JUNE, 1979.

MINERAL RESOURCES BRANCH
 TECHNICAL REPORT
7277

Alan J. Reed
 4 June 1979

TABLE OF CONTENTS

INTRODUCTION	PAGE 1
INDEX MAP 1:50,000	PAGE 2
DIAMOND - DRILLING	PAGE 3
PLAN OF DIAMOND DRILL-HOLES 1:4800	in pocket
LOG OF DDH. BR #1	PAGE 4
LOG OF DDH. BR #2	PAGE 5
LOG OF DDH. BR #3	PAGE 6
ASSAY CERTIFICATE	PAGE 7
COST STATEMENT	PAGE 8
AUTHOR'S CERTIFICATE	PAGE 9

GENERAL NATURE OF THE REPORT : DIAMOND - DRILLING
SPECIFIC CLAIMS INVOLVED : JERICO 3 M.C. #45 (1b)
MINING DIVISION : KAMLOOPS
SPECIFIC NTS LOCATION : 92 I / 7W
LATITUDE AND LONGITUDE : 50° 26' N; 120° 56' W
OWNER OF CLAIMS : NEW JERICO MINES LTD.
OPERATOR : HIGHMONT MINING CORPORATION LTD.
AUTHOR : A.J. REED, P. ENG.
DATE SUBMITTED : 04th JUNE, 1979

INTRODUCTION

The Jericho 3 mineral claim (#45) comprises 16 mineral claim units and is located in the southeast portion of the Highland Valley approximately 3 km east of Gnawed Mountain, 1½ km northwest of Billy Lake and 4 km south of Indian Reserve #14 in the Highland Valley.

Access to the Jericho 3 mineral claim is by 8 km of dirt road which leaves the Logan Lake to Ashcroft paved highway at a point approximately 6 km southwest from Logan Lake.

The Jericho 3 mineral claim was located by A.J. Reed, agent for New Jericho Mines on 5th June, 1975 as part of a large abandonment and re-location project which consolidated the mineral claim holdings of New Jericho Mines Ltd and Gaza Mines Ltd by abandoning nearly 200 two-post mineral claims and fractional mineral claims and re-staking the ground with 8 modified grid system mineral claims.

This report describes 61 metres of diamond drilling with XRT equipment (core diameter 22mm) in three vertical holes at Bornite Ridge in the southeast section of the Jericho 3 mineral claim.

PROVISIONAL MAP

92-1/7

121°00'

643000m. E.

44

45

46

47

55, 48

49

50°30'

559500m. N.

L 5500

94

93

92

91

90

89

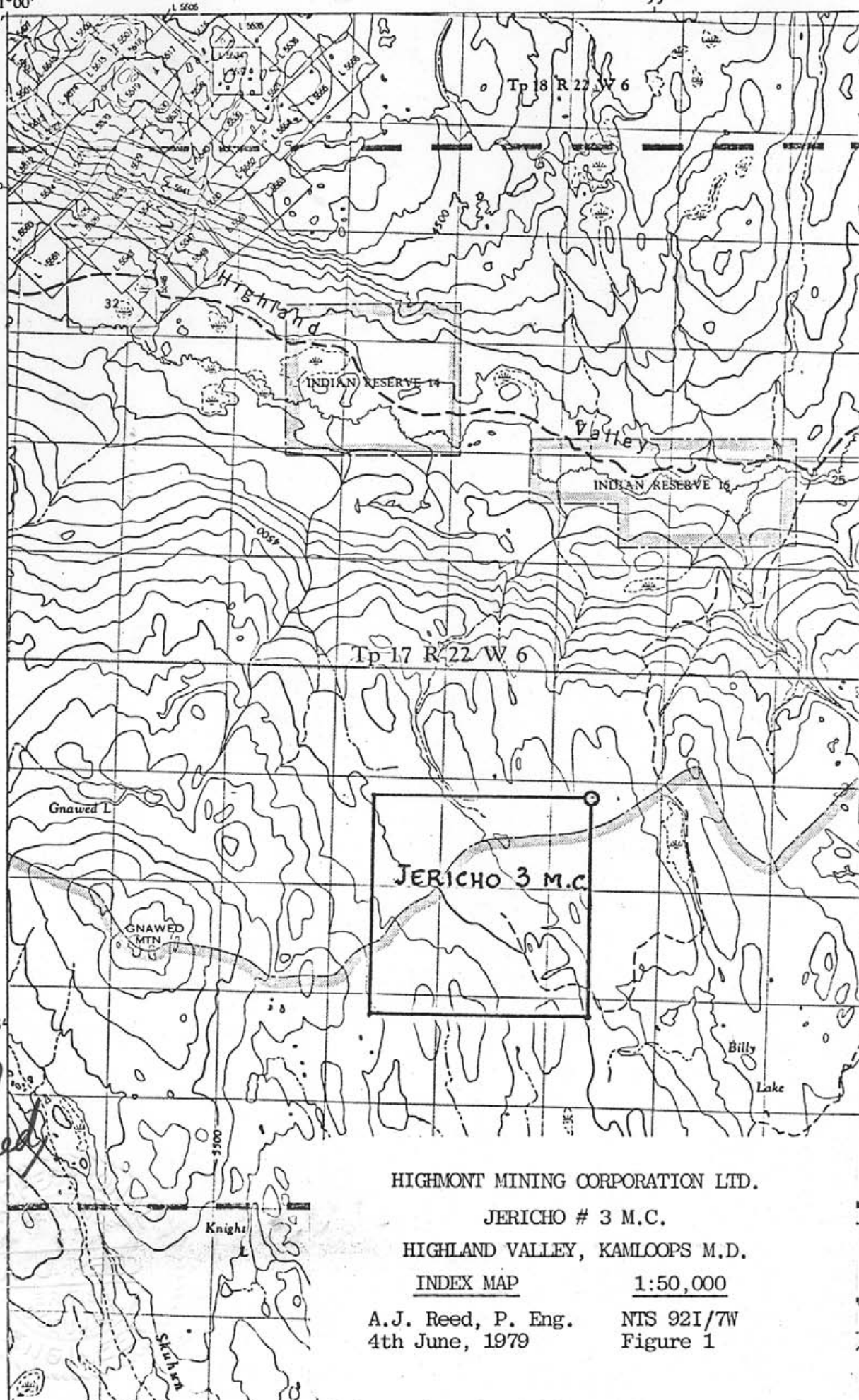
88

87

86

85

84



Alan J. Reed

HIGHMONT MINING CORPORATION LTD.

JERICHO # 3 M.C.

HIGHLAND VALLEY, KAMLOOPS M.D.

INDEX MAP

1:50,000

A.J. Reed, P. Eng.
4th June, 1979

NTS 921/7W
Figure 1

DIAMOND DRILLING

Three vertical diamond drill holes were drilled at Bornite Ridge to test an area of the Guichon Quartz Dicrite phase of the Guichon Batholith where a number of narrow (1 to 20 cm) quartz veins containing bornite, tetrahedrite and chalcocite have been exposed in shallow trenches. The locations of the three diamond drill-holes, numbered BR #1 to BR #3 are shown on Figure 2.

The results of the drilling program were disappointing. The strongest vein intersection was at 11.1 metres in DDH. BR #3 where a 10 cm quartz-chalcocite-bornite vein made a core-angle of 60° . The core was logged and photographed in clour and then the whole core as assayed in 1.5 metre sections. The best assay section was in DDH. BR #3 from 6.1 to 7.6 metres where 1.5 metres returned an assay of 0.235% copper.

HIGHMONT MINING CORP. LTD.

HOLE # BR 1

CORE: 22 mm.

BOX # REGRV.	MINERALIZATION	ALTERATION	ROCK TYPE
69% 65% 95% 87% 133%	CALCITE on fractures LIMONITE on fractures 18' 1/4" CALCITE-EPIDOTE @ 45°	FRESH 14'-15' PINK POTASH-FELDSPAR & EPIDOTE	GUICHON Q.D Coarse anhedral dark-green HORNEBLEND, anhedral white PLAGIOCLASE and interstitial "wedge-shaped" QUARTZ
85% 77% 75% 115% 125%	27' 2" CALCITE-HAEMATITE	27'-37' POTASH-FELDSPAR	
64% 60% 95% 100% 60% 100%	CHLORITE-EPIDOTE on fractures at 40° 37 1/2' 4" QUARTZ-HAEMATITE-CHALCOITE at 40° LIMONITE ON JOINTS at 30°-50°	37'-38' pale-green SERICITE	
65% 57% 140% 100%	1/8" pink GYPSUM at 25°	FRESH	
75% 90% 100% 70%	LIMONITE on JOINTS @ 35°	66'-67' POTASH FELDSPAR 69'-70' POTASH FELDSPAR & WEAK EPIDOTE-CHLORITE	
50% 103%	CHALCOPYRITE, MALACHITE, CHALCOITE on veins at 35°	70'-75' intense pale-green SERICITE 75'-84' weak POTASH-FELDSPAR	
93% 96% 70% 93% 93% 93% 42%	CALCITE on fractures at 30°	FRESH FRESH	

Depth (metres)

E.O.H.

Sheet 1 of 1 Sheets

Alan J. Reed
ANov 79
78?

HIGHMONT MINING CORP. LTD.

HOLE: BR #2
CORE: 22 mm.

BOX # RECON.	MINERALIZATION	ALTERATION	ROCK TYPE
3	7% L		QUICHON Q.D.
5% 100%	LIMONITE ON	CHLORITE-EPIDOTE on	Anhydral "sieve-like"
30%	FRACTURES TO 26'	fractures.	hornblende, subhedral
6	70°-90°		white plagioclase and
70%		24'-26' pale-green SERICITE	wedge-shaped inter-
65%		Weak replacement of	stitial quartz.
90%		HBL by Biotite,	contains paragonite.
9	32'-45' 1/8" veinlets	EPIDOTE & CHLORITE	dissected to 1/2" x 1/2" (1/4" diam.) at 37'
70%	of pink GYPSUM		
80%			
12	at 0°-30°		
14	No visible COPPER		
E.O.H.	MINERALIZATION		

Alan J. Reed
A Nov 79

HIGHMONT MINING CORP. LTD.

HOLE BR #3

CORE: 22mm

BOX #	RECON.	MINERALIZATION	ALTERATION	ROCK TYPE
Depth (metres)	50%	LIMONITE		
	40%	TRACE ROOTS	LIMONITE, SERICITE	GUICHON Q.D.
	30%	7' 1/2" Qtz - MALACHITE - BORNIITE - TETRAHYDRITE	7' - 6' - 10'	
	75%	11' 1/4" Qtz - LIMONITE		Subhedral hornblende replaced by chlorite & sericite!
	95%		15' - 24' PALE GREEN SERICITE	Subhedral plagioclase.
	90%	17' 2" Qtz - BORNIITE - CHALCOCITE at 45°		
	70%			
	100%	23' 1/2" Qtz - CHALCOCITE		Antedral wedge-shaped quartz.
	75%	Yell at 60°		Flow alignment of smaller acicular hornblendes.
	30%	Diss. cc to 24'		
100%				
75%				
100%	36' 5' 4" Qtz - CHALCOCITE - BORNIITE at 60°	36' - 40' pale green SERICITE + LIMONITE + CLAY alteration		
100%				
95%				
75%				
20%			40' - 42' Clay Gouge	
50%				
70%	43' 1/2" Qtz - BORNIITE		42' - 50' Intense pale green SERICITE alteration	
35%				
30%				
25%				
50%				
40%	52' 1/2" Qtz - BORNIITE		51' - 54' Moderate SERICITE and ARBILIC alteration	GUICHON Q.D.
10.5	E.O.M.			

Alan J. Reed
A Nov 79



AFTON MINES LTD. (N.P.L.)

P.O. BOX 937
KAMLOOPS, B.C. V2C 5N4TEL: (604) 374-5022
TELEX: 048-8327

ATTENTION: A. REED

November 29, 1978

HIGHMONT MINING CORP. LTD.

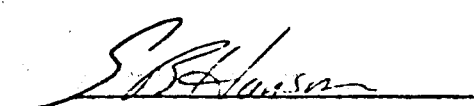
CERTIFICATE OF ASSAYS

Dear sir:

Enclosed are our results on drill cores submitted.

<u>HOLE NO:</u>	<u>FOOTAGE</u>	<u>% Cu</u>	<u>HOLE NO:</u>	<u>FOOTAGE</u>	<u>% Cu</u>
BR #1	0-5	0.030	BR # 2	0- 5	0.035
	5-10	0.020		5-10	0.027
	10-15	0.022		10-15	0.028
	15-20	0.034		15-20	0.016
	20-25	0.014		20-25	0.016
	25-30	0.015		25-30	0.015
	30-35	0.023		30-35	0.019
	35-40	0.020		35-40	0.028
	40-45	0.005		40-45	0.017
	45-50	0.004			
	50-55	0.034	BR # 3	0- 5	0.012
	55-60	0.008		5-10	0.092
	60-65	0.008		10-15	0.026
	65-70	0.028		15-20	0.190
	70-75	0.127		20-25	0.235
	75-80	0.012		25-30	0.022
	80-85	0.017		30-35	0.033
	85-90	0.017		35-40	0.113
	90-95	0.023		40-45	0.072
	95-100	0.020		45-50	0.026
				50-55	0.040

<u>COMPOSITES</u>	<u>% Cu</u>	<u>% Mo</u>	<u>Au oz/st</u>	<u>Ag oz/st</u>
BR # 1	0.022	0.001	0.005	0.019
BR # 2	0.018	0.001	0.005	0.020
BR # 3	0.075	0.002	0.005	0.026


G.R. Hanson
Chief Assayer

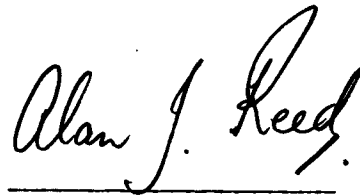
COST STATEMENT

W.F. Petrie Box 1023, Merritt, B.C.	8 days at \$ 75.00 per day 23 Oct - 1 Nov 1978	\$ 600.00
M.J. Porter Box 144 Savona, B.C.	14 days at \$ 75.00 per day 19 Oct -- 6 Nov 1978	\$ 1,050.00
A.J. Reed 309 McGill Road, Kamloops, B.C.	2½ days at \$ 200.00 per day 4, 5 Nov. 1978, 2 June 1979	\$ 500.00
Rental of 2 4 X 4 trucks	20 days at \$ 25.00 per day	\$ 500.00
Rental of diamond drill and pump	one-half month at \$ 250.00	\$ 250.00
Supplies	- Fuel	\$ 166.00
	- Drill bits, reamer and casing shoe	\$ 940.00
	- Miscellaneous	\$ 47.00
Assays		\$ 192.20
Preparation of Report		\$ 400.00
TOTAL COSTS		<hr/> \$ 4,645.20

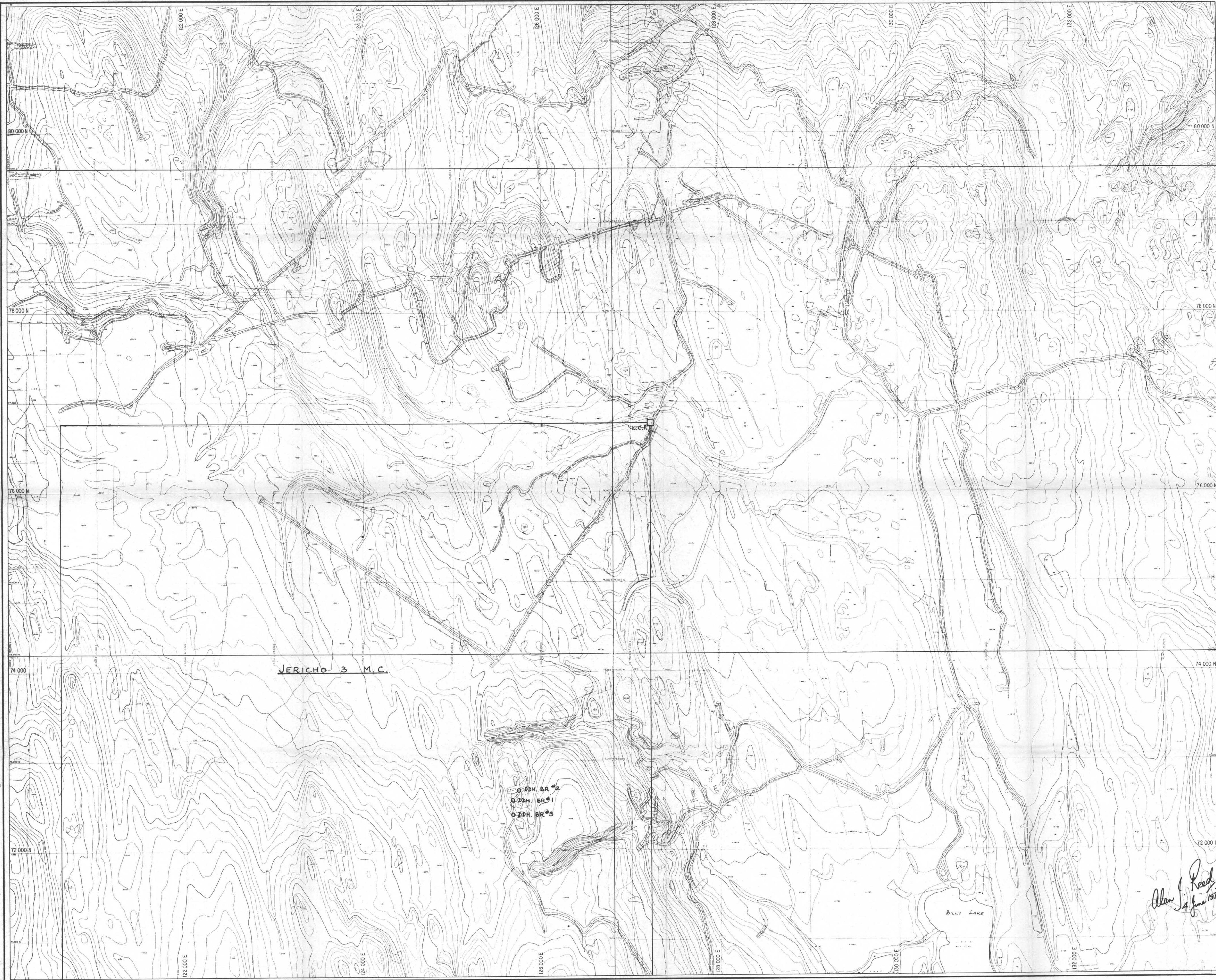
AUTHOR'S CERTIFICATE

I, Alan James Reed of the City of Kamloops, British Columbia do hereby certify that:

1. I am a Professional Engineer registered in the Province Of British Columbia and the Province Of Ontario.
2. I am a graduate of the University of Leeds with a B. Sc. (Hons. 1963) degree in geology.
3. I have practised my profession since 1963 while employed by the Geological Survey of Jamaica, Siscoe Metals of Ontario Ltd., Highmont Mining Corporation Ltd. and Afton Mines Ltd.
4. This report describes a diamond drill program performed under my supervision between October 1st and November 6th, 1978.

A handwritten signature in cursive script that reads "Alan J. Reed". The signature is written in dark ink and is positioned above a horizontal line.

A. J. Reed, P. Eng.
04th June, 1979.



PURCHASE ORDER	
NUMBER	DESCRIPTION

ASSOCIATED DRAWINGS	

MCELHANNY SURVEYING & ENGINEERING LTD.
VANCOUVER BC.

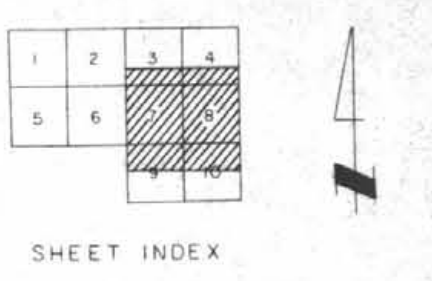
Scale Bar 0 200 400
Scale: 1 inch to 400 feet
Contour Interval: 10 feet

COMPILATION NOTE
Topographic Mapping compiled from aerial photography flown on August 27, 1971 at the approximate scale of 1:12000

CONTROL NOTE
Coordinate origin based on M.S.E.L. station Mc 1140 as 100,000N, 100,000E
Bearings are astronomic from stellar observations referred to the meridian through Mc 1140
Lat. 50° 30' 00", Long. 121° 03' 00"
Elevations are on geodetic datum See M.S.E.L. Drawing No. 08200-0 Rev.1

LEGEND

Horizontal control	△7	Contours	
Photo centre	☆	Spot elev.	
Secondary road		Tree line	
Trail		Pile	
Building		Cut line	
Shoreline		Trench	
Creek		Swamp	



0 400 METRES

7277

ISSUE NO. DATE ISSUE DR. EN. APP.
CERTIFIED FOR CONSTRUCTION
TECK PROJ. ENG.
TECK CORPORATION
HIGHMONT PROJECT

AREA
JERICHO 3 M.C.
SUBJECT
1978 DIAMOND DRILLING.
SCALE
1:4800
DR. EN. APP.
A. J. REED, P. ENG.
DATE
02.06.79
TECK DRAWING NO.
FIGURE 2
ISSUE

*Alan J. Reed
24 June 1979*