

1979 DIAMOND DRILL HOLE REPORT

FOR ASHLU GROUP

ASH; ASH 2; ASH 3 UN; ASH 6 UN;
ASH 7 UN; ASH 8 UN

VANCOUVER MINING DIVISION

NTS 92G-14E

49°56' N; 123°24' W

OPERATOR: WALTER BABKIRK, Prospector
2055 Como Lake Avenue
Coquitlam, B.C.

FOR OWNERS: CLARA BABKIRK & WALTER BABKIRK
2055 Como Lake Avenue
Coquitlam, B.C.

MARVIN JOHNSON
2330 Rogerson Drive
Coquitlam, B.C.

SIDNEY C. JOHNSON
25745 - 102nd Avenue
Whonnock, B.C.

BY: WALTER BABKIRK
July 1979

7403

TABLE OF CONTENTS

	<u>PAGE NO.</u>
INTRODUCTION	1
INDEX MAP	2
FIGURE NO. 2 - CLAIM MAP	3
DRILL HOLE LOCATION MAP	4
HISTORY	5
OUTLINE OF WORK	5 & 6
SUMMARY OF RESULTS	6
DIAMOND DRILLING	7
STATEMENT OF COST	8
STATEMENT OF QUALIFICATION	9

INTRODUCTION

ASHLU GROUP

The Ashlu Group is located in the Vancouver Mining Division, on Claim Sheet 92-G-14, W/2, about 49°56' latitude N, and 123°24' longitude W, 8 miles up Ashlu Creek from its junction with the Squamish River (figs. 1 and 2).

The property is accessible via a highway up the Squamish River and an 8 - mile logging road up Ashlu Creek, for a total distance of about 28 miles from Squamish.

Owners of the claims that comprise the Ashlu Group are:

WALTER BABKIRK, FMC 172623
2055 Como Lake Avenue
Coquitlam, B.C.

ASH 18684 K
ASH #2 56 (11)
ASH 3 UN 74 (1)
ASH 6 UN 72 (1)
ASH 7 UN 98 (6)
ASH 8 UN 99 (6)

CLARA BABKIRK, FMC 172624
2055 Como Lake Road
Coquitlam, B.C.

CLARA 3 UN 73 (1)

MARVIN JOHNSON, FMC 183654
2330 Rogerson Drive
Coquitlam, B.C.

TOAD 12 Un 308

AND

SIDNEY C. JOHNSON, FMC 178045
25745 - 102nd Avenue
Whonnock, B.C.

The Ashlu Group of mineral claims consist of 33 contiguous units.

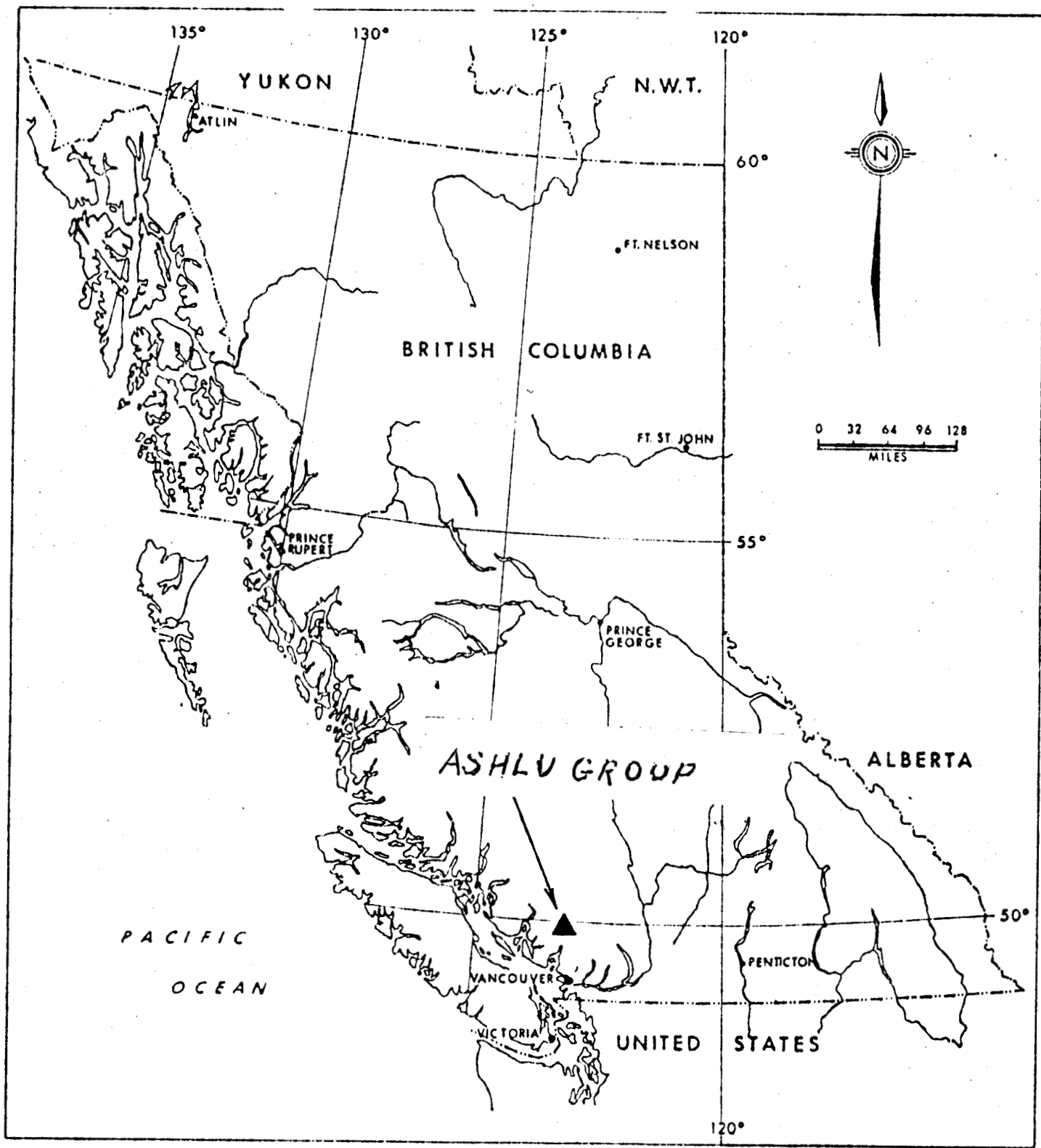


FIG. No. 1

REGIONAL LOCATION MAP

ASHLU GROUP
BRITISH COLUMBIA

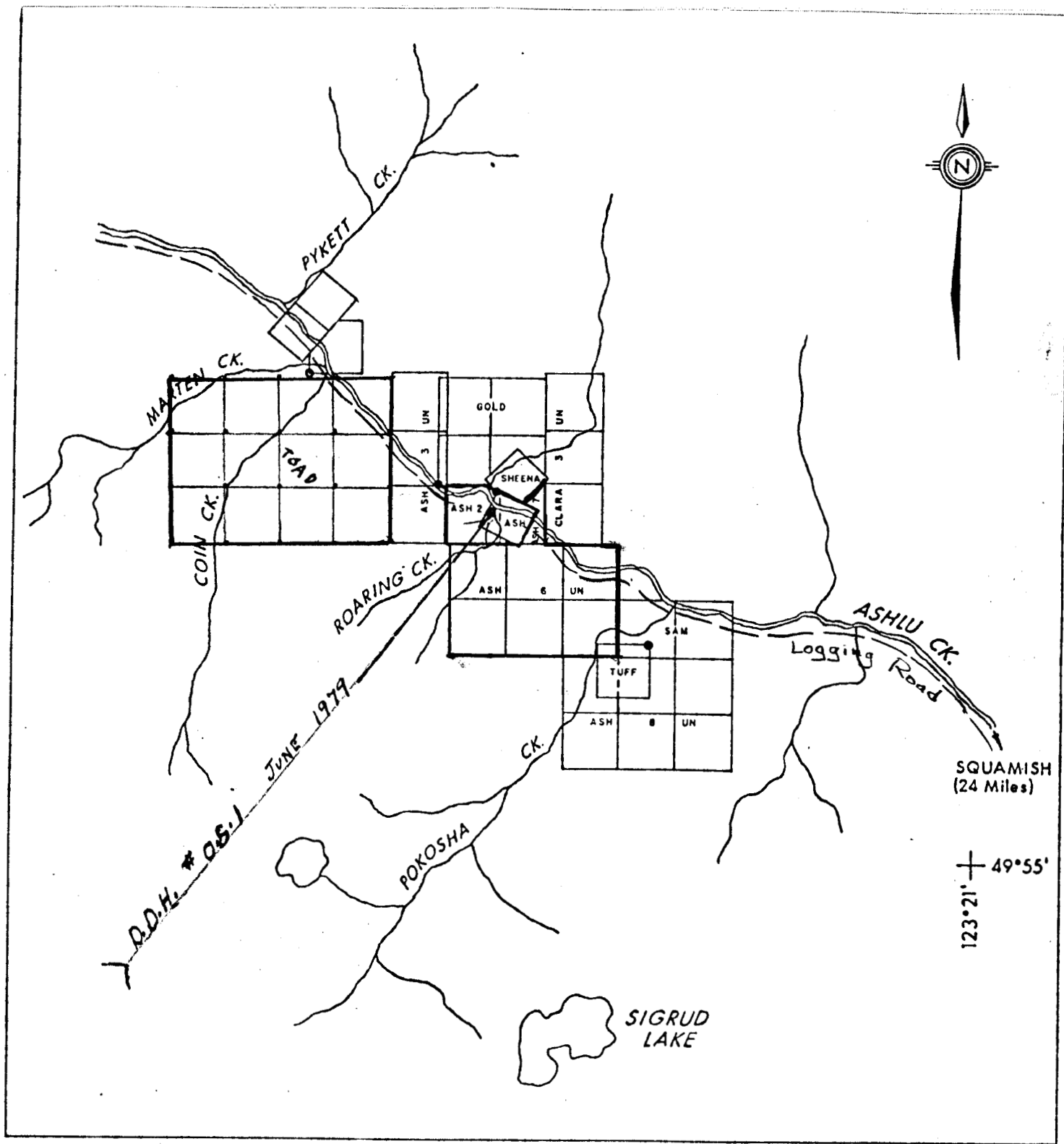
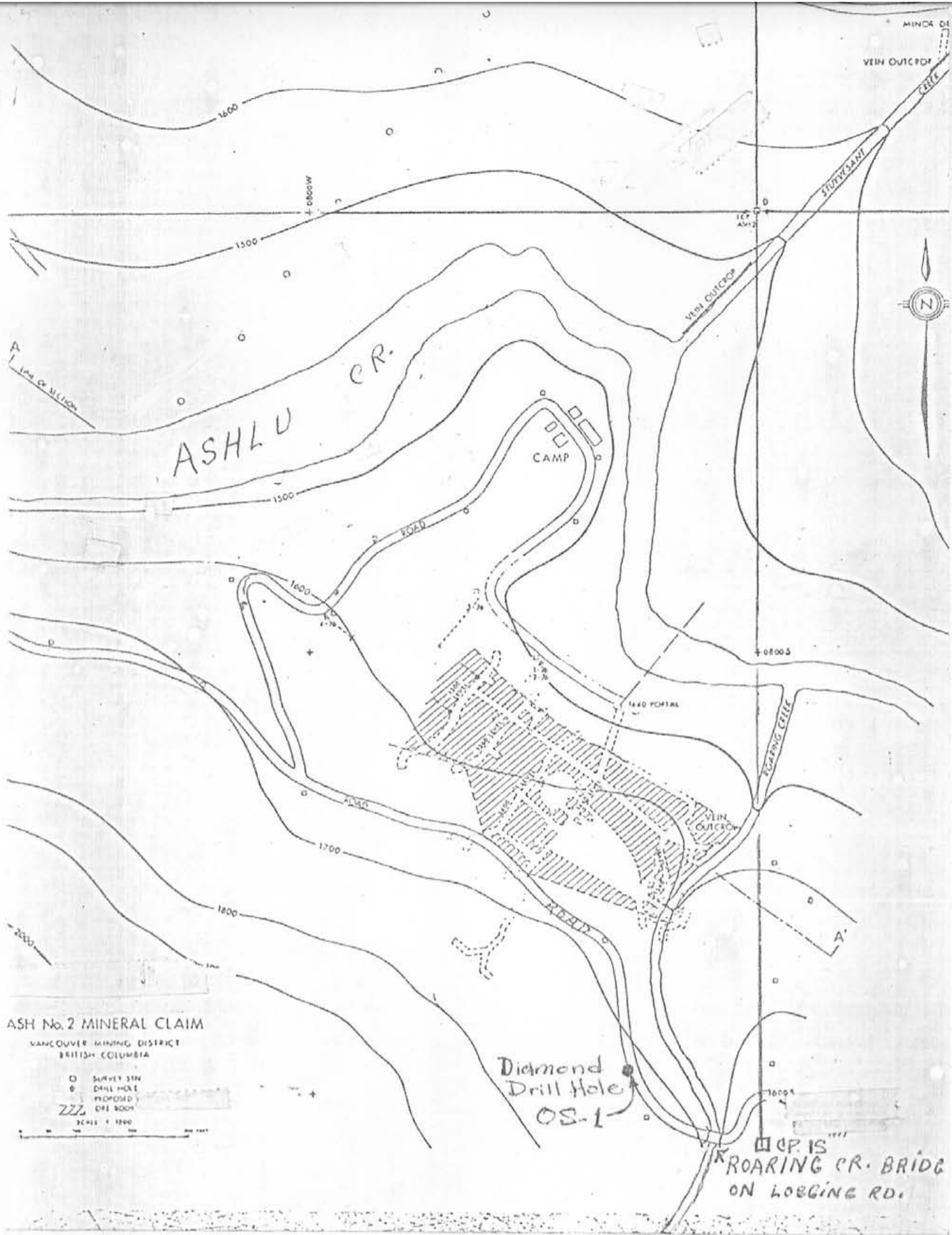


FIG. No. 2

- ASH 18684 K
- ASH #2 56 (11)
- ASH 3 UN 74 (1)
- ASH 6 UN 72 (1)
- ASH 7 UN 98 (6)
- ASH 8 UN 99 (6)
- CLARA 3 UN 73 (1)
- TOAD 12 UN 308

CLAIM MAP
 ASHLU GROUP
 VANCOUVER MINING DISTRICT
 BRITISH COLUMBIA





DRILL HOLE LOCATION MAP

- ASH 18684 K
- ASH #2 56 (11)
- ASH 3 UN 74 (1)
- ASH 6 UN 72 (1)
- ASH 7 UN 98 (6)
- ASH 8 UN 99 (6)
- CLARA 3 UN 73 (1)
- TOAD 12 UN 308

HISTORY

The "Gold Coin" group of mineral claims was staked in 1923 by Mr. Fred Pykett and Associates. They had prospected the area for several seasons prior to discovering a well mineralized, gold-quartz vein exposed in the steep gorge of Roaring Creek, a small tributary of Ashlu Creek.

During the next few years development work consisted of driving a 75-foot drift along the quartz vein at a point some hundred feet plus lower than the outcrop. The property was reported on in 1924 and 1925 by Provincial geologists who collected a total of 28 samples for assay, Appendix A.

In 1934, the property was bonded to the Ashloo Gold Mining Syndicate for further development. By this time the main adit level had advanced 390 feet with several raises to the surface outcrop and one deep winze reported to be 109 feet down along the vein as of November, 1935.

In the period 1932 - 39 ore mined amounted to 15,047 tons and yielded 6,396 oz. of gold, 7,154 oz. silver and 66,187 lbs. copper. The mine was closed in the fall of 1939 and was not reactivated after the Second World War.

OUTLINE OF WORK

The property is mapped as granodiorite, quartz monzonite, quartz diorite with probable dyke rock exposed in several creek cuts in the area. A gold-tungsten vein occurs on the property in widths up to 10 feet.

Additional outcrop was exposed in the vicinity of bridge crossing Roaring Creek. Surface prospecting revealed a small showing of sulfide mineralization. A magnetometer survey line was run along the road from a location approximately 400 feet East of the bridge to the West boundary of the Ash #2 claim. Magnetometer readings indicated a rise of approximately 3000 gammas across a length of 50 feet located approximately 300 feet of Roaring Creek. It was decided to check the mineralization exposed and the "magnetic high" with a small diameter diamond drill hole. The diamond drill was spotted at the above location. See Drill Hole Location Map, Page 4.

SUMMARY OF RESULTS

One diamond drill hole was drilled to a depth of 54 meters, size 1 1/8" diameter, XRT size. Miner sulfides were present throughout the depth. Two sections were assayed with results as indicated below.

	<u>OZ. PER TON</u>	
	AU	AG
OS-1 0 - 0.6 meters	0.396	0.87
40.9 - 41.1 meters	0.154	0.19

CLAIM NO. ASH

DIAMOND DRILL RECORD

PROPERTY ASHLU CR.

HOLE NO. OS. 1

LATITUDE 49° 55'

ELEVATION 1709

BEARING 35° S. T. N. DEPTH _____

STARTED JUNE 5/79

COMPLETED JUN 15/79

DEPARTURE _____

SECTION _____

DIP 62°

DRILLED BY W. BABKIRK

LOGGED BY W. BABKIRK

DEPTH FEET	FORMATION	SAMPLE NO.	FROM	TO FEET	WIDTH FE.	OZ. per ton. ASSAYS			
						Au	Ag		
0-36	MICA SCHIST TRACE SULPHIDES		0	2.0	2.0	0.396	0.87		
36-60	QUARTZ MONZANITE GOOD SULPHIDE								
60-90	QUARTZ MONZANITE, BIOTITE MICA WITH SULPHIDES								
90-135	QUARTZ MONZANITE, BIOTITE MICA WITH SULPHIDES								
135-141	QUARTZ WITH DICRITE SEAMS WELL MINERALIZED WITH SULPHIDES		135.0	135.5	0.5	0.154	0.19		
141-160	QUARTZ WITH DICRITE STRINGERS WITH MICA. SULPHIDES								
160-165	QUARTZ PORPHYRY WITH MICA MINERALIZED WITH SULPHIDES								
165-175	QUARTZ PORPHYRY WITH MICA MINERALIZED WITH SULPHIDES								

Logged By *Walter Babkirk*
 Qualified Prospector + Driller

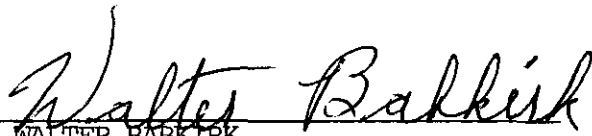
-7-

ASHLU GROUP MINERAL CLAIMS

WORK PROGRAM FOR 1979

STATEMENT OF COSTS FOR DIAMOND DRILLING

Core drilled 54 meters of 1 1/8" O D Hole at \$32.40 per meter	\$1,750.00
Two Men for 8 days at \$50.00 per day per man	800.00
Diamon Bits 9 Coring Bits	1,152.19
One Reaming Shell	148.09
One Wajax Fire Pump	103.02
Other Firefighting Equipment Required by Forestry (Chemical Extinguishers, Shovels & Mattocks)	50.00
Parts and Miscellaneous Equipment (Propane, Nails, Drill Parts, etc.)	70.00
200 Feet of 1/2" Water Line for Drill	25.00
Gas, Oil for Drill and Rod Grease	50.00
Transportation for Drill to Site	100.00
Food and Transportation for 4 Wheel Drive	<u>199.72</u>
TOTAL COST	<u>\$4,448.02</u>

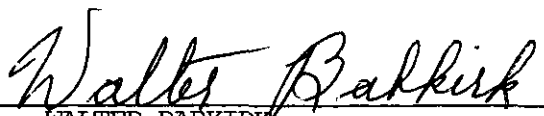

WALTER BABKIRK
Qualified Prospector

STATEMENT OF QUALIFICATIONS

I, WALTER BABKIRK, of 2055 Como Lake Avenue, in the Municipality of Coquitlam, in the Province of British Columbia, HEREBY CERTIFY the following qualifications:

I have been a full time Prospector for the past 11 years in British Columbia.

I passed the Rock and Minerals Test in 1968 with D. H. RAE and have been on the grubstake until this year, 1979, with the Government Grubstake Program.



WALTER BABKIRK
QUALIFIED PROSPECTOR