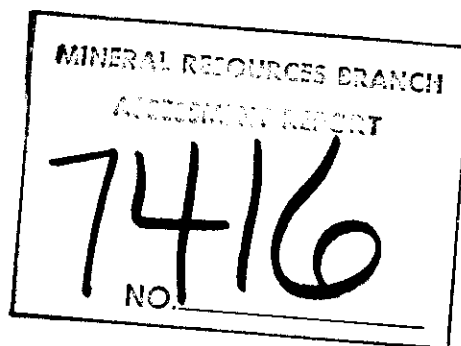


COMINCO LTD.

EXPLORATION
NTS: 82F/10E

WESTERN DISTRICT
24 AUGUST 1979



GEOLOGICAL MAPPING AND SOIL GEOCHEMICAL SURVEY

ON THE BAKER MINERAL CLAIMS

CRAWFORD BAY AREA

FORT STEELE MINING DIVISION, B.C.

49°35'N; 116°39'W

AUGUST 1979

R.L. WRIGHT

TABLE OF CONTENTS

	<u>PAGE</u>
SUMMARY	1
LOCATION	1
HISTORY	1
OWNERSHIP	2
SOIL GEOCHEMISTRY AND ANALYTICAL PROCEDURE	2
GEOLOGY AND MINERALIZATION	2
RESULTS AND INTERPRETATION	3
CONCLUSIONS ,	3

ATTACHMENTS

PLATE 1	LOCATION MAP - BAKER CLAIMS	SCALE 1:50,000
PLATE 2a	SAMPLE LOCATIONS - NORTH SHEET	1:5,000
PLATE 2b	SAMPLE LOCATIONS - SOUTH SHEET	1:5,000
PLATE 3a	GEOCHEMISTRY - Cu ppm, NORTH SHEET	1:5,000
PLATE 3b	GEOCHEMISTRY - Cu ppm, SOUTH SHEET	1:5,000
PLATE 4a	GEOCHEMISTRY - Pb/Ag ppm, NORTH SHEET	1:5,000
PLATE 4b	GEOCHEMISTRY - Pb/Ag ppm, SOUTH SHEET	1:5,000
PLATE 5a	GEOCHEMISTRY - Zn ppm, NORTH SHEET	1:5,000
PLATE 5b	GEOCHEMISTRY - Zn ppm, SOUTH SHEET	1:5,000
PLATE 6a	GEOCHEMISTRY - Mo ppm, NORTH SHEET	1:5,000
PLATE 6b	GEOCHEMISTRY - Mo ppm, SOUTH SHEET	1:5,000
PLATE 7a	GEOCHEMISTRY - W ppm, NORTH SHEET	1:5,000
PLATE 7b	GEOCHEMISTRY - W ppm, SOUTH SHEET	1:5,000
PLATE 8a	GEOLOGY - NORTH SHEET	1:5,000
PLATE 8b	GEOLOGY - SOUTH SHEET	1:5,000

APPENDIX I STATEMENT OF EXPENDITURES ON BAKER CLAIMS

APPENDIX II AFFIDAVIT

APPENDIX III STATEMENT OF QUALIFICATIONS

COMINCO LTD.

EXPLORATION
NTS: 82F/10E

WESTERN DISTRICT
24 AUGUST 1979

GEOLOGICAL MAPPING AND SOIL GEOCHEMICAL SURVEY

ON THE BAKER MINERAL CLAIMS

CRAWFORD BAY AREA

FORT STEELE MINING DIVISION, B.C.

SUMMARY

A geological mapping and soil sampling program was carried out on the Baker claims which are located 16 kilometres southeast of Crawford Bay, B.C. The work consisted of detailed geological mapping and prospecting of the entire property area, and soil sampling of a grid which covers approximately half of this area. Sampling consisted of 939 soil samples and 11 stream silts. All samples were analysed for Cu, Pb, Zn, Ag, Mo and W. In addition, reconnaissance contour soil samples were collected in September 1978 to outline broad anomaly patterns for follow-up by detailed grid sampling. These results are also herein reported.

Results show anomalous values for Zn, Mo and W over a large area on the Baker 1 claim, extending onto the Baker 4 to the north and the Baker 2 and Baker 3 claims to the south. A small molybdenite occurrence was found near the north end of the anomalous zone.

Further work is recommended to follow-up these interesting geochemical anomalies.

LOCATION

Latitude : 49°35'N
Longitude: 116°39'W
NTS : 82F/10E
Fort Steele Mining Division, B.C.

The claims are located on Baker Creek which drains northeastward into Redding Creek, and are accessible by logging road from Kimberley, via the St. Mary's River, or by the powerline road east from Crawford Bay. Elevation ranges from 1650 to 2300 metres, with heavy forest up to about 2000 metres.

HISTORY

No previous work had been done by Cominco in this area prior to 1978. The claims were staked in response to the GSC Open File 514 released in June 1978. Preliminary soil sampling in September 1978 indicated anomalous concentrations of Zn, Mo and W over a large area. This work resulted in the 1979 program of mapping and soil grid sampling.

OWNERSHIP

Four claims comprising 63 units owned 100% by Cominco Ltd.

Date recorded	:	Baker 1-3	July 31/78
		Baker 4	Oct. 20/78
Date assessment work due:		Baker 1-3	July 31/79
		Baker 4	Oct. 20/79

SOIL GEOCHEMISTRY AND ANALYTICAL PROCEDURE

The field work was conducted by R.L. Wright, M.Sc. 1974, assisted by J.C. Haskins, R.M. Eyre and G.G. Connolly.

Soil samples were collected from a grid at 30-metre spacing along east-west lines which are 200-metres apart. Samples were also collected at 100 metre spacing along contour lines on both sides of the valley, and at 30 m spacing along lumber roads which were recently built in the valley bottom. Control of sample locations was provided by cut lines. The sample spacing being determined by chaining, using slope corrections. Several stream silts were also collected to provide coverage of areas outside the grid, particularly to the south.

Soil and silt samples were collected in numbered kraft sample bags, air dried, then shipped to Cominco's Vancouver Research Laboratory. Samples were then dried and sieved, and the -80 mesh fraction was analysed for Cu, Pb, Zn, Ag, Mo and W. The Cu, Pb, Zn and Ag were determined by atomic absorption following extraction by hot 20% nitric acid. Molybdenum was determined by nitric-perchloric acid digestion and HCl extraction followed by thiocyanate colourimetry. Tungsten was determined by pyrosulphate fusion and HCl extraction followed by Zn dithiol colourimetry. All values are reported in ppm.

GEOLOGY AND MINERALIZATIONRegional Geology

The claim group is in an area underlain by sedimentary rocks of Upper Paleozoic age. Mapping by the GSC indicates a homoclinal north-south trending sequence of sediments which include the Kitchener-Siyeh, Dutch Creek and Mount Nelson Formations of Purcell age to the east, unconformably overlain by the Toby and Horsethief Creek Formations of Windermere age to the west.

Property Geology

It was found, on detailed mapping of the property, that the lithologies could not be assigned to the formations described by the GSC; consequently, the geology was mapped by lithology only, and no attempt was made to confuse the issue by assigning formational names.

The sediments to the east of the unconformity constitute a complex assemblage of argillite, quartzite and dolomite, with minor amphibolite. Generally these units could not be correlated over more than a few hundred metres, due apparently to structural complications and/or sedimentary facies variations. To the west (above the unconformity) three major units occur - a conglomerate, a massive quartzite, and black argillite. The distribution of these lithologies is shown in Plates 8a and 8b. An outcrop of intrusive rock was located in the centre of the claim group. This rock is a quartz monzonite consisting of quartz, feldspar and accessory biotite.

A skarn-type molybdenite showing was found on the property (Plate 8a). The host rock is a quartz-garnet-actinolite-calcite skarn.

RESULTS AND INTERPRETATION

The results for copper, lead, and silver in soils show very few anomalous values and the potential for significant mineralization is therefore considered to be limited.

The zinc results show a large anomalous zone (>300 ppm) on the west side of Baker Creek on Baker 1. This anomaly could not be related to any particular lithology or to mineralization and is therefore unexplained at this time.

The molybdenum and tungsten results show a broad anomalous zone (>10 ppm Mo, >20 ppm W) containing smaller highly anomalous zones. The skarn showing occurs within this broad zone. Due to heavy overburden particularly in the bottom of the valley, these anomalies cannot be related to any known source.

CONCLUSIONS

A program of detailed geological mapping and soil geochemistry on the Baker group has indicated broad anomalous zones for zinc, molybdenum and tungsten. Determination of the significance of these values requires further work.

Report by: R.L. Wright.
R.L. Wright, Geologist

Endorsed by: D.L. Cooke
D.L. Cooke
Senior Geologist

RLW/gk

Distribution:

Mining Recorder (2)
Administration (1)
Western District (1)
RLW/DLC (2)

Approved for
Release by: G. Hayden
G. Hayden, Manager
Western District
Exploration

COMINCO LTD.

EXPLORATION
N.T.S. 82F/10E

WESTERN DISTRICT
27 AUGUST 1979

APPENDIX I

STATEMENT OF EXPENDITURES

Cost of geological mapping and soil geochemistry surveys on the Baker mineral claims - Crawford Bay area, Fort Steele Mining Division, B.C. from August 1, 1978 to July 30, 1979.

SALARIES

R.L. Wright	(12 days @ 128.70/day) - June 12 - July 30/79	1,544.40
J.C. Haskins	(38 days @ 79.20/day) - June 12 - July 30/79	3,009.60
R.M. Eyre	(20 days @ 63.36/day) - June 12 - July 30/79	1,267.20
G.G. Connolly	(36 days @ 63.36/day) - June 12 - July 30/79	2,280.96
D.M. Carr	(4 days) - Sept. 7-10(incl.) 1978	900.00
A. Glatiotis	(7 days) - Sept. 7-10(incl.) 1978	

TRANSPORTATION

Truck rental - 2 vehicles - June, July 1979 (including gas, oil, servicing, etc.)	1,385.00
--	----------

FIELD COSTS

Food and accomodation - 117 man days @ \$18.05	2,112.00
Equipment	2,680.00

GEOCHEMISTRY

Linecutting contract - 11.33 miles @ \$210.00/mile	2,379.30
868 soil samples @ 7.95	<u>6,900.00</u>
	<u>\$24,458.46</u>

Signed: R. L. Wright.
R.L. Wright
Geologist

COMINCO LTD.

EXPLORATION
NTS: 82F/10E

WESTERN DISTRICT
27 AUGUST 1979

APPENDIX II

IN THE MATTER OF THE B.C. MINERAL ACT AND
IN THE MATTER OF A GEOLOGICAL AND GEOCHEMICAL
PROGRAM CARRIED OUT ON THE
BAKER MINERAL CLAIMS
LOCATED IN THE FORT STEELE MINING DIVISION
OF THE PROVINCE OF BRITISH COLUMBIA
MORE PARTICULARLY NTS: 82F/10E

A F F I D A V I T

I, ROBERT L. WRIGHT, OF THE CITY OF VANCOUVER IN THE PROVINCE OF BRITISH COLUMBIA, MAKE OATH AND SAY:

1. THAT I am employed as a geologist by Cominco Ltd., and as such have a personal knowledge of the facts to which I hereinafter depose:
2. THAT annexed hereto and marked as Appendix I to this my affidavit is a true copy of expenditures on a geological and geochemical program carried out on the Baker mineral claims.
3. THAT the said expenditures were incurred between the 1st day of August 1978 and the 30th day of July, 1979 for the purpose of mineral exploration on the above noted claims.

R.L. Wright.
R.L. Wright, Geologist

COMINCO LTD.

EXPLORATION
NTS: 82F/10E

WESTERN DISTRICT
27 AUGUST 1979

STATEMENT OF QUALIFICATIONS

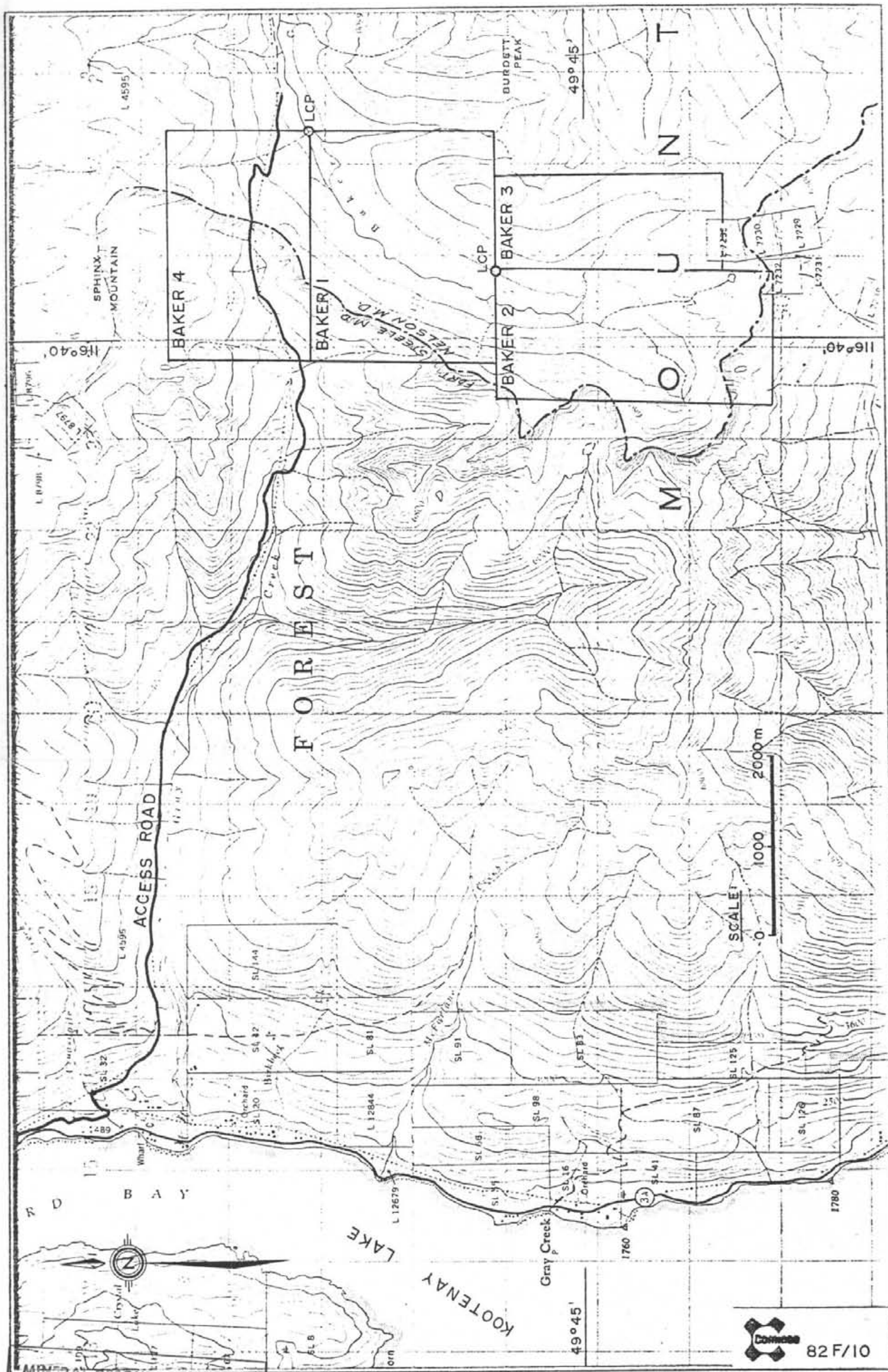
APPENDIX III

I, ROBERT L. WRIGHT, OF THE CITY OF VANCOUVER, IN THE PROVINCE OF BRITISH COLUMBIA, HEREBY CERTIFY:

1. THAT I am a geologist residing at 1859 Napier Street, Vancouver, British Columbia, with a business address at 409 Granville Street, Vancouver, British Columbia.
2. THAT I graduated with a B.Sc. in geology from McMaster University, Hamilton, Ontario in 1971 with a M.Sc. in geology from the University of British Columbia in 1974.
3. THAT I have practised geology with Cominco Ltd. from 1975 to 1979.

DATED THIS **27** DAY OF AUGUST 1979 AT VANCOUVER, BRITISH COLUMBIA.

Signed: R.L. Wright.
R.L. Wright, M.Sc.

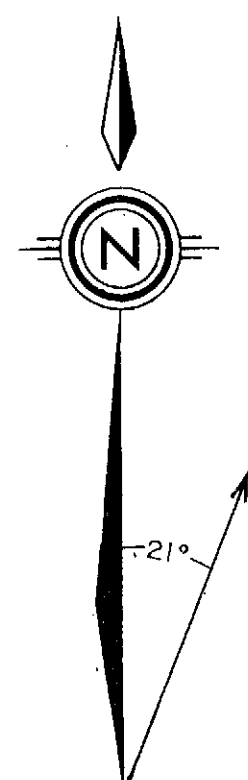


82 F/10

Drawn by: <i>RECORDED</i>		Traced by: <i>CH</i>	
Revised by: <i>DATE</i>	Date: <i>DATE</i>	Revised by: <i>DATE</i>	Date: <i>DATE</i>
<div style="font-size: 48pt; font-weight: bold;">7416</div>			
NO.			

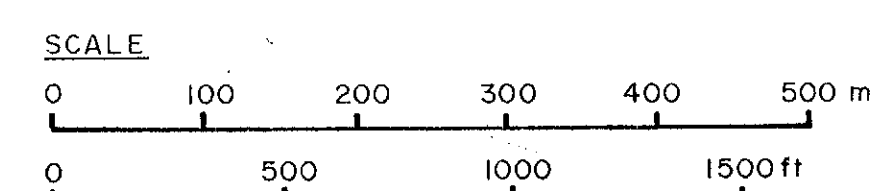
LOCATION MAP - BAKER CLAIMS

Scale: 1:50,000	Date: AUGUST, 1979	Plate: 1
-----------------	--------------------	----------



LEGEND

- 1979 soil grid (numbers 1-736; 772-877)
- 1979 road soil samples (numbers 737-771; 878-939)
- 1979 silt sample numbers
- 1978 contour soil sample numbers
- 1978 silt sample numbers
- no sample



NOTE: Elevations are shown in feet

BAKER 4

BAKER 1

7416

R.L. Wright

BAKER CREEK PROPERTY

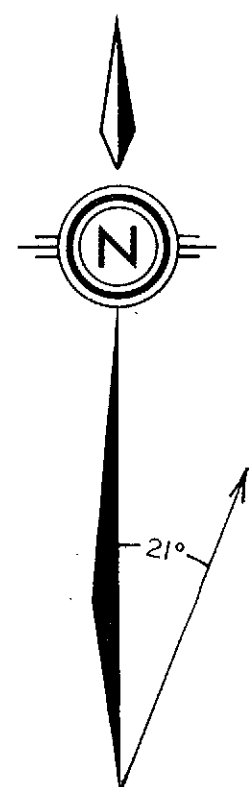
NORTH SHEET

82 F/10

SAMPLE LOCATIONS

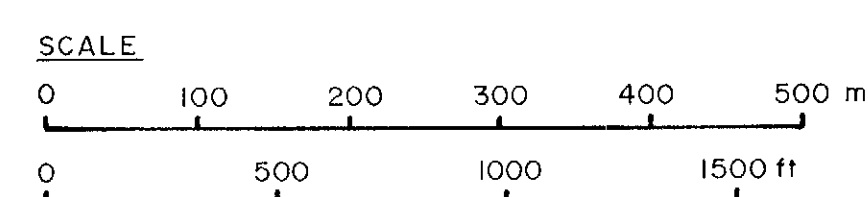
Scale: 1:5000 Date: AUGUST, 1979 Plate: 2a

FORM 210 9/70

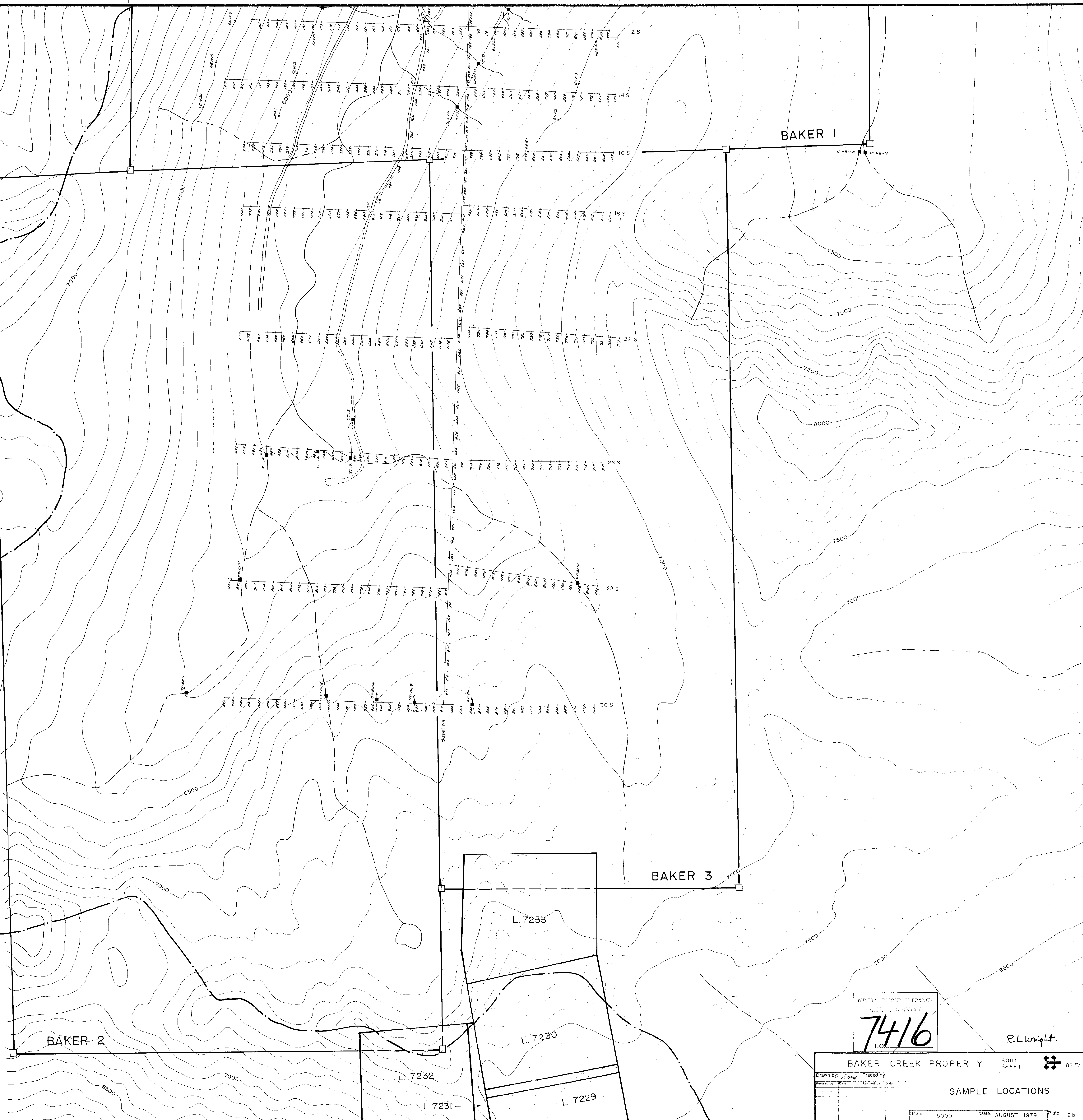


LEGEND

- 1979 soil grid (numbers 1-736; 772-877)
- 1979 road soil samples (numbers 737-771; 878-939)
- 1979 silt sample numbers
- 1978 contour soil sample numbers
- 1978 silt sample numbers
- no sample



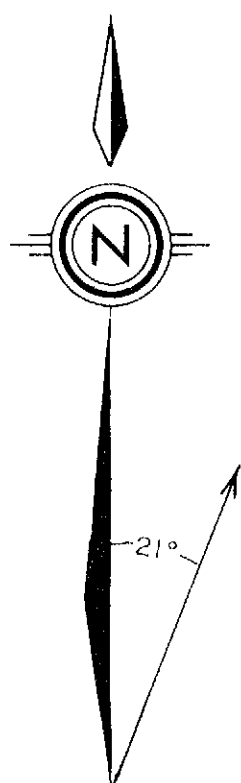
NOTE: Elevations are shown in feet.



MINERAL RESOURCES BRANCH
ASSAY REPORT
7416
NO.

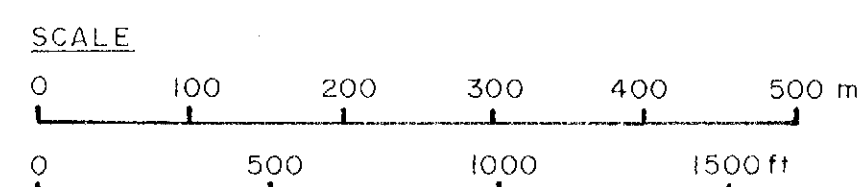
R. L. Wright.

BAKER CREEK PROPERTY		SOUTH SHEET	82 F/1
Drawn by: <i>R. Wright</i>	Traced by:		
Reviewed by: <i>DRB</i>	Reviewed by: <i>DRB</i>		
SAMPLE LOCATIONS			
Scale: 1:5000		Date: AUGUST, 1979	Plate: 2b

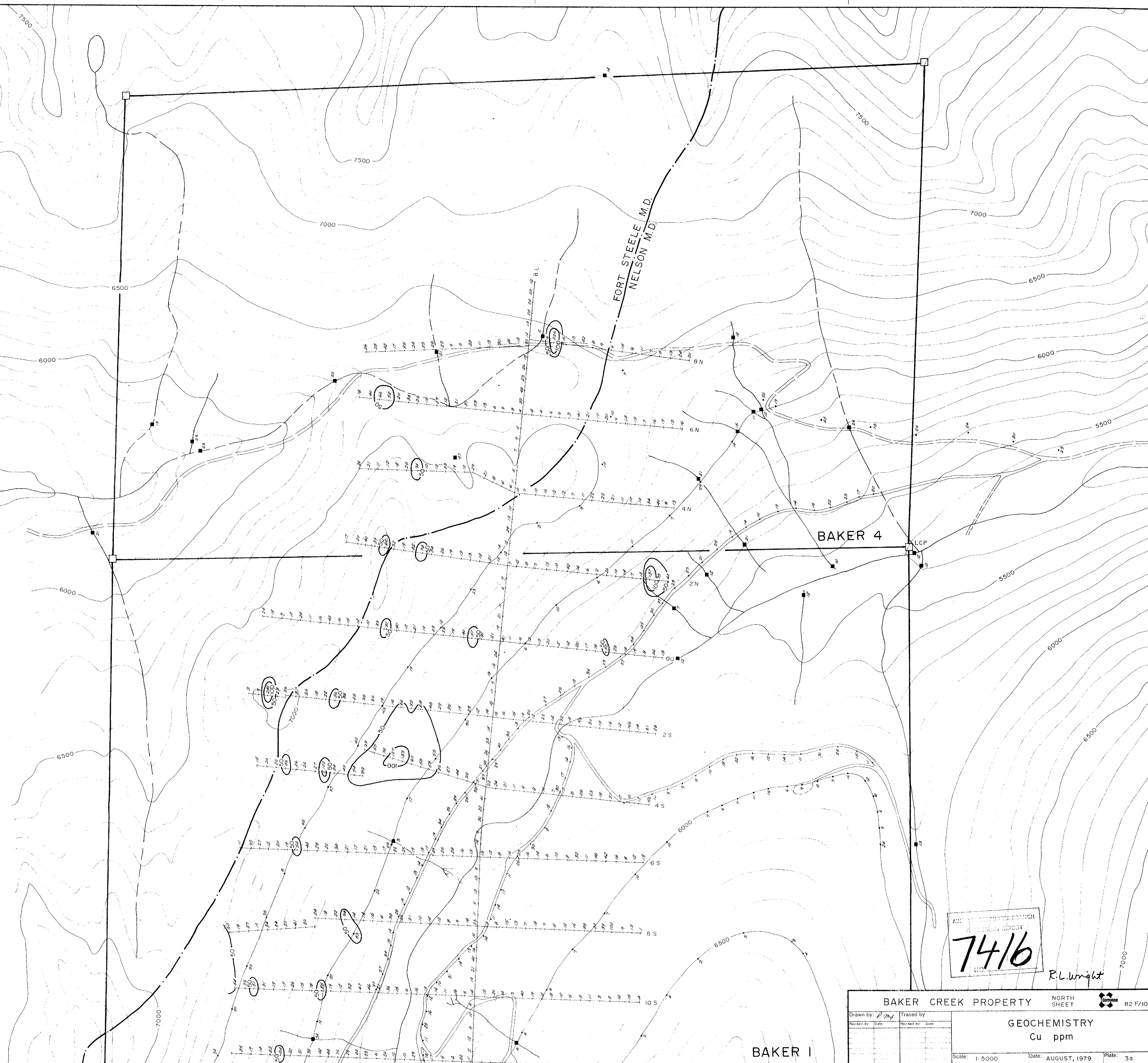


LEGEND

- 1979 soil grid
 - 1979, 1979 soil locations
 - 1978 contour soil sampler
 - No sample
 - Not analysed
- Contour intervals in ppm Cu as indicated



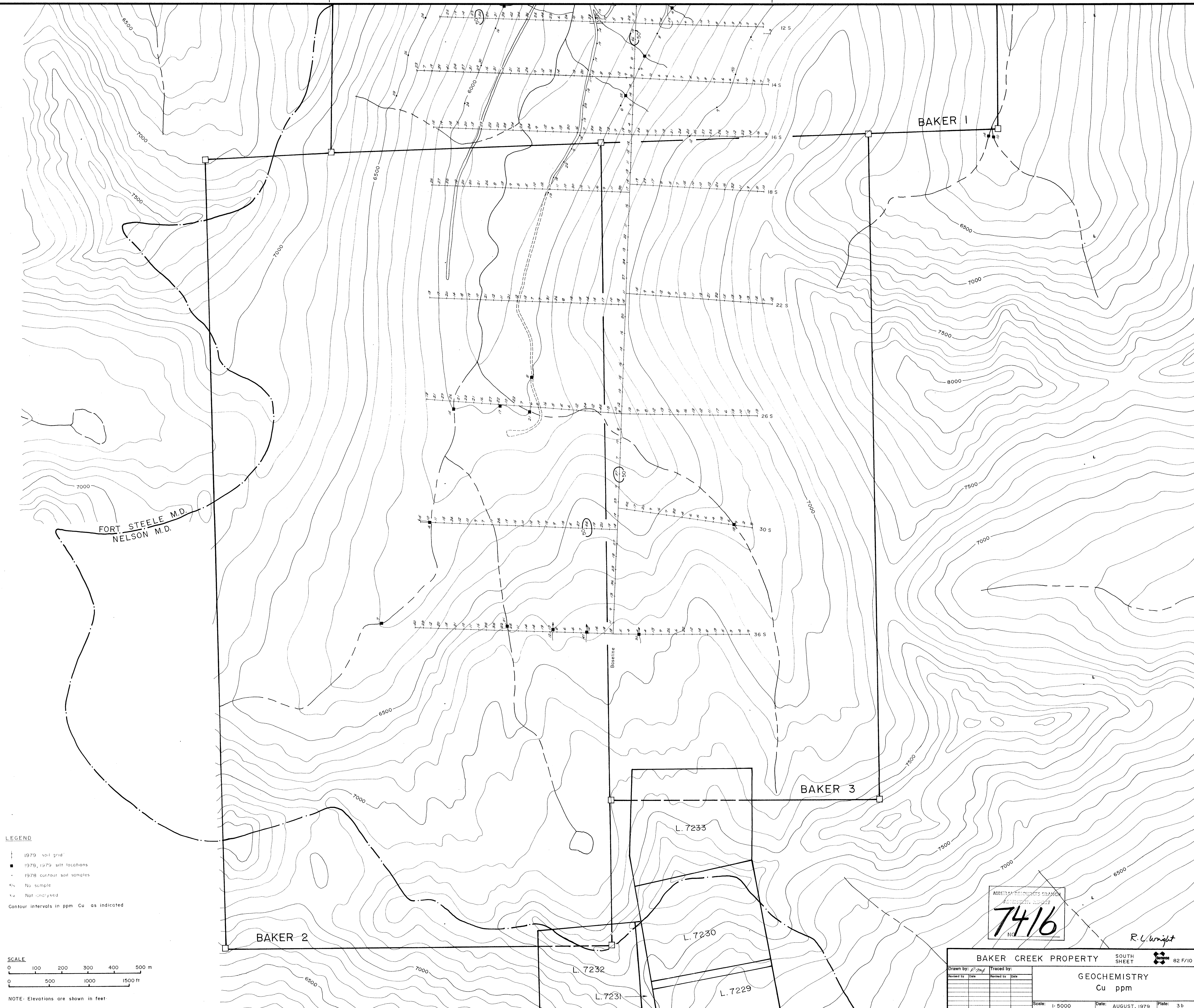
NOTE: Elevations are shown in feet



7416

R.L. Wright

BAKER CREEK PROPERTY		NORTH SHEET	82 F/10
GEOCHEMISTRY		Cu ppm	
Scale: 1:5000		Date: AUGUST, 1979	Plate: 3d



+ 1979 soil grid
 ■ 1978, 1979 silt locations
 • 1978 contour soil samples
 x/s No sample
 x/s Not analysed

Contour intervals in ppm Cu as indicated

SCALE

0 100 200 300 400 500 m

0 500 1000 1500 ft

NOTE: Elevations are shown in feet.

MINERAL RESOURCES BRANCH
ASSESSMENT REPORT
7416
NS

R. L. Wright

BAKER CREEK PROPERTY

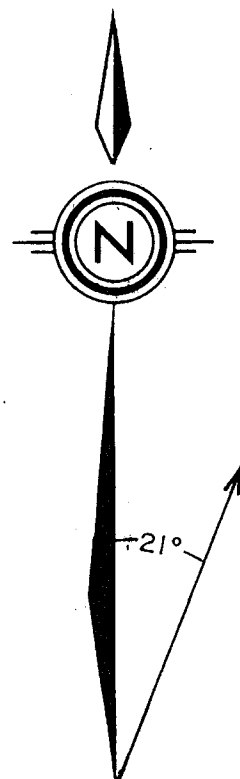
SOUTH
SHEET

82 F/I

GEOCHEMISTRY
Cu ppm

Scale: 1:5000	Date: AUGUST 1979	Plate: 3b
---------------	-------------------	-----------

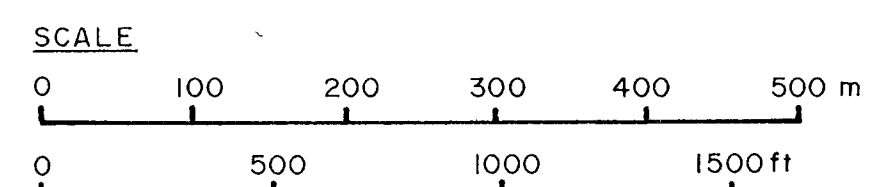
FORM 910-01



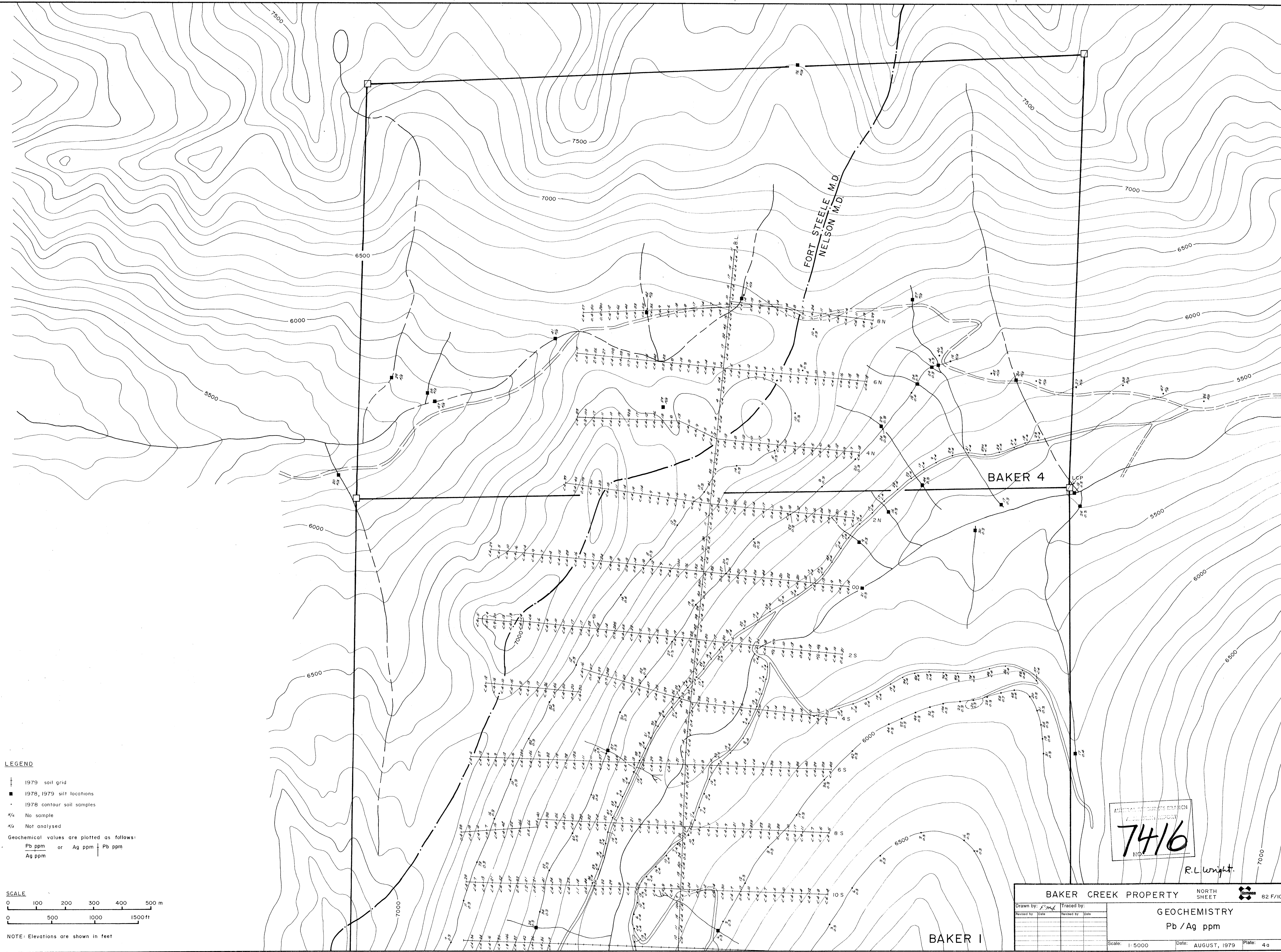
LEGEND

- 1979 soil grid
- 1978, 1979 silt locations
- 1978 contour soil samples
- N/A No sample
- N/A Not analysed

Geochemical values are plotted as follows:
Pb ppm or Ag ppm | Pb ppm
Ag ppm



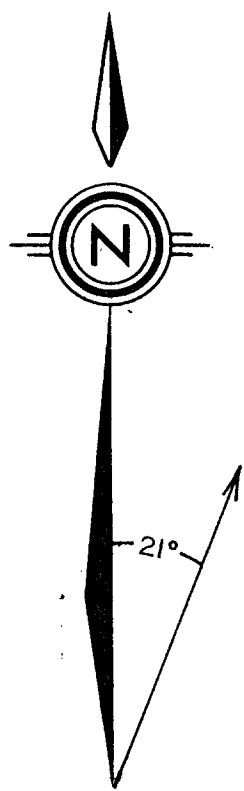
NOTE: Elevations are shown in feet



7416

R.L. Wright

BAKER CREEK PROPERTY		NORTH SHEET		82 F/10	
Drawn by: <i>[Signature]</i>		Traced by:			
Revised by:	DATE	Revised by:	DATE		
GEOCHEMISTRY					
Pb / Ag ppm					
Scale: 1:5000				Date: AUGUST, 1979	Plate: 4a



FORT STEELE M.D.
NELSON M.D.

BAKER 1

BAKER 3

BAKER 2

L. 7233

L. 7230

L. 7232

L. 7231

L. 7229

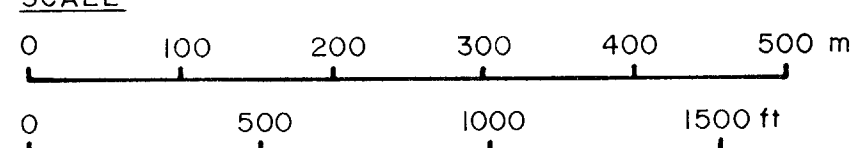
LEGEND

- 1979 soil grid
- 1978, 1979 silt locations
- 1978 contour soil samples
- No sample
- Not analysed

Geochemical values are plotted as follows:

Pb ppm or Ag ppm | Pb ppm
Ag ppm

SCALE



NOTE: Elevations are shown in feet

MATERIAL RESOURCES BRANCH
7416
NO.

R.L. Wright

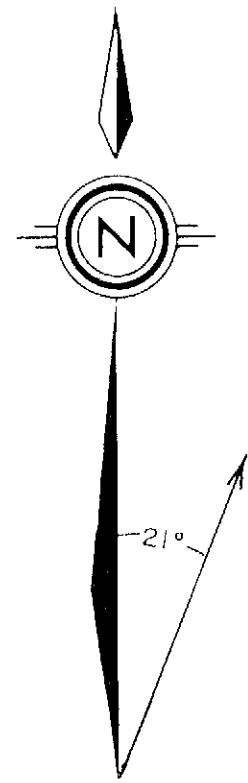
BAKER CREEK PROPERTY

SOUTH SHEET 82 F/10

GEOCHEMISTRY

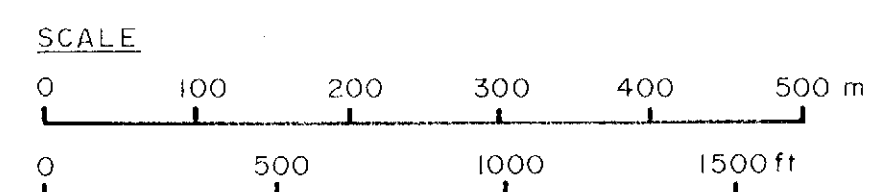
Pb / Ag ppm

Scale 1:5000 Date AUGUST, 1979 Plate 4b

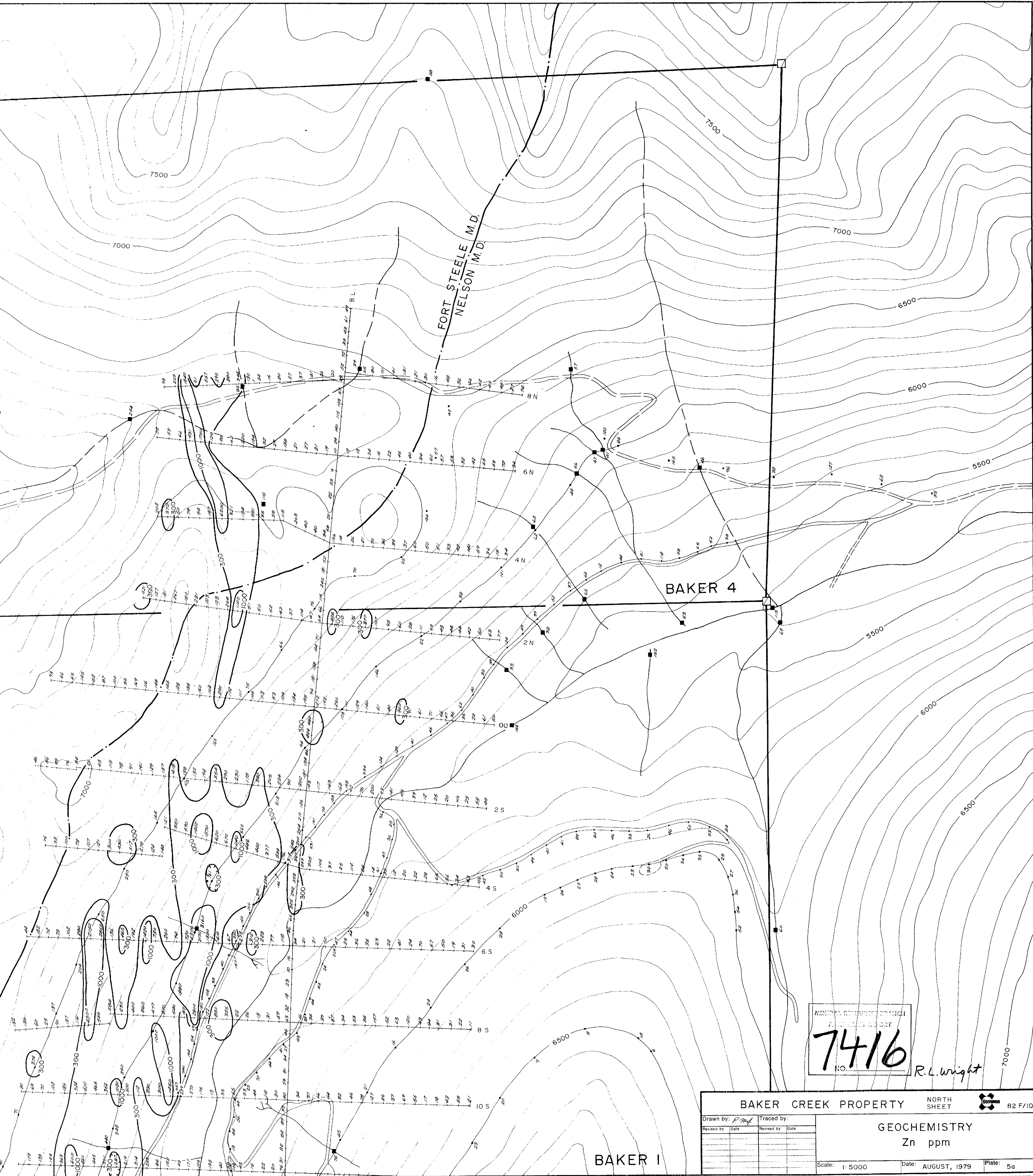


LEGEND

- + 1979 soil grid
 - 1978, 1979 silt locations
 - 1978 contour soil samples
 - * No sample
 - * Not analysed
- Contour intervals in ppm Zn as indicated



NOTE: Elevations are shown in feet



MINERAL RESOURCES BRANCH
ATLANTIC REGION
7416
R.O.

R.L. Wright

BAKER CREEK PROPERTY

NORTH
SHEET

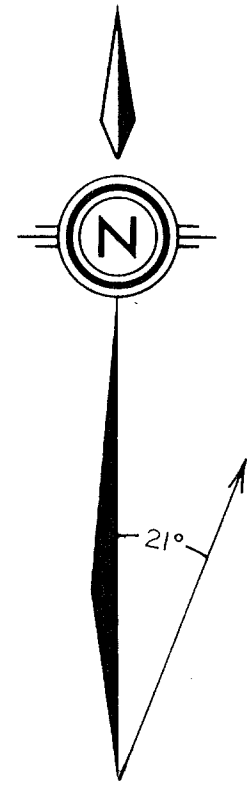
82 F/10

Drawn by: <i>R.M.</i>	Traced by:
Revised by: []	Revised by: []
Revised by: []	Revised by: []
Revised by: []	Revised by: []
Revised by: []	Revised by: []

GEOCHEMISTRY
Zn ppm

Scale: 1:5000 Date: AUGUST, 1979 Plate: 5a

FORM 210 9/10



FORT STEELE M.D.
NELSON M.D.

BAKER 1

BAKER 3

BAKER 2

L. 7233

L. 7230

L. 7229

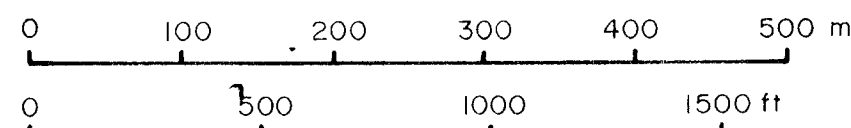
L. 7232

L. 7231

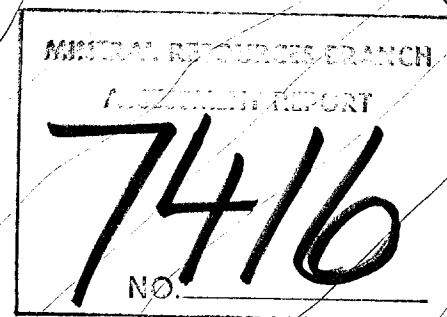
LEGEND

- 1979 soil grid
 - 1978, 1979 silt locations
 - 1978 contour soil samples
 - %s No sample
 - %a Not analysed
- Contour intervals in ppm Zn as indicated

SCALE



NOTE: Elevations are shown in feet



R.L. Wright

BAKER CREEK PROPERTY

SOUTH SHEET

82 F/10

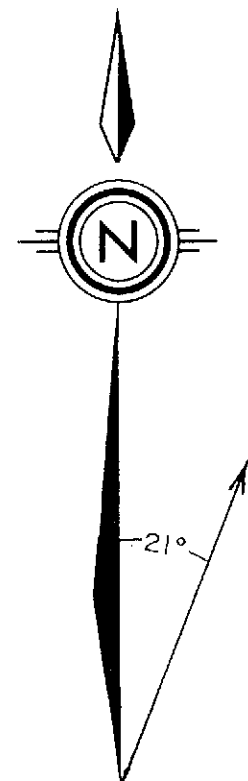
GEOCHEMISTRY
Zn ppm

Drawn by	Traced by
RMF	
Revised by	Date
Revised by	Date

Scale: 1:5000

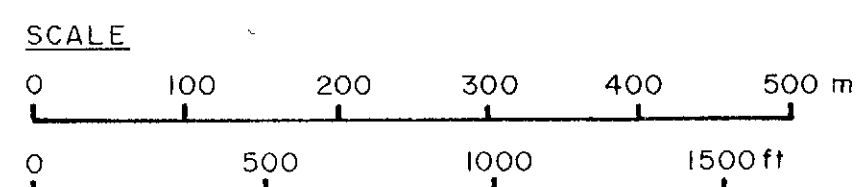
Date: AUGUST, 1979

Plate: 5b

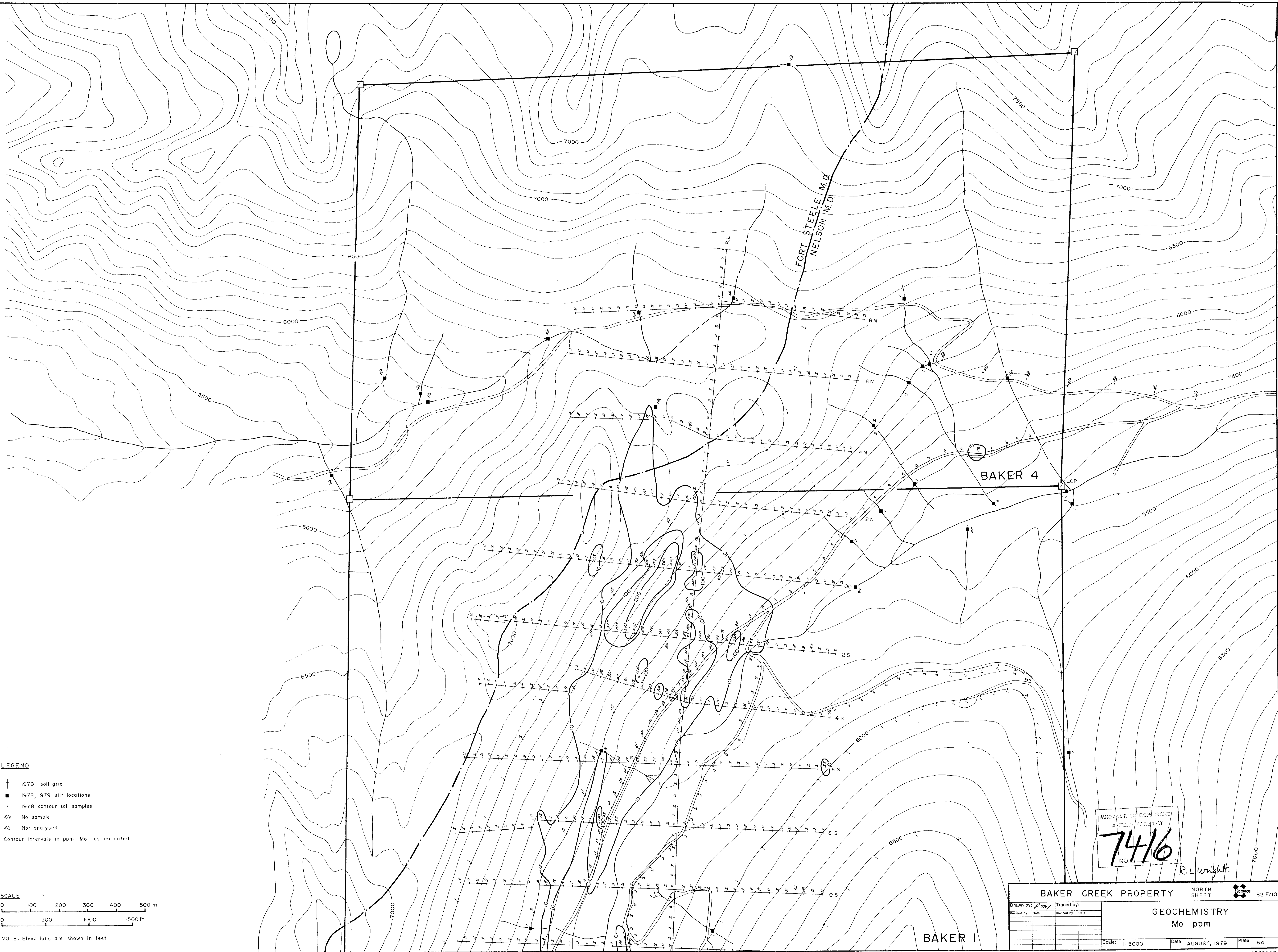


LEGEND

- 1979 soil grid
- 1978, 1979 silt locations
- 1978 contour soil samples
- No sample
- Not analysed
- Contour intervals in ppm Mo as indicated



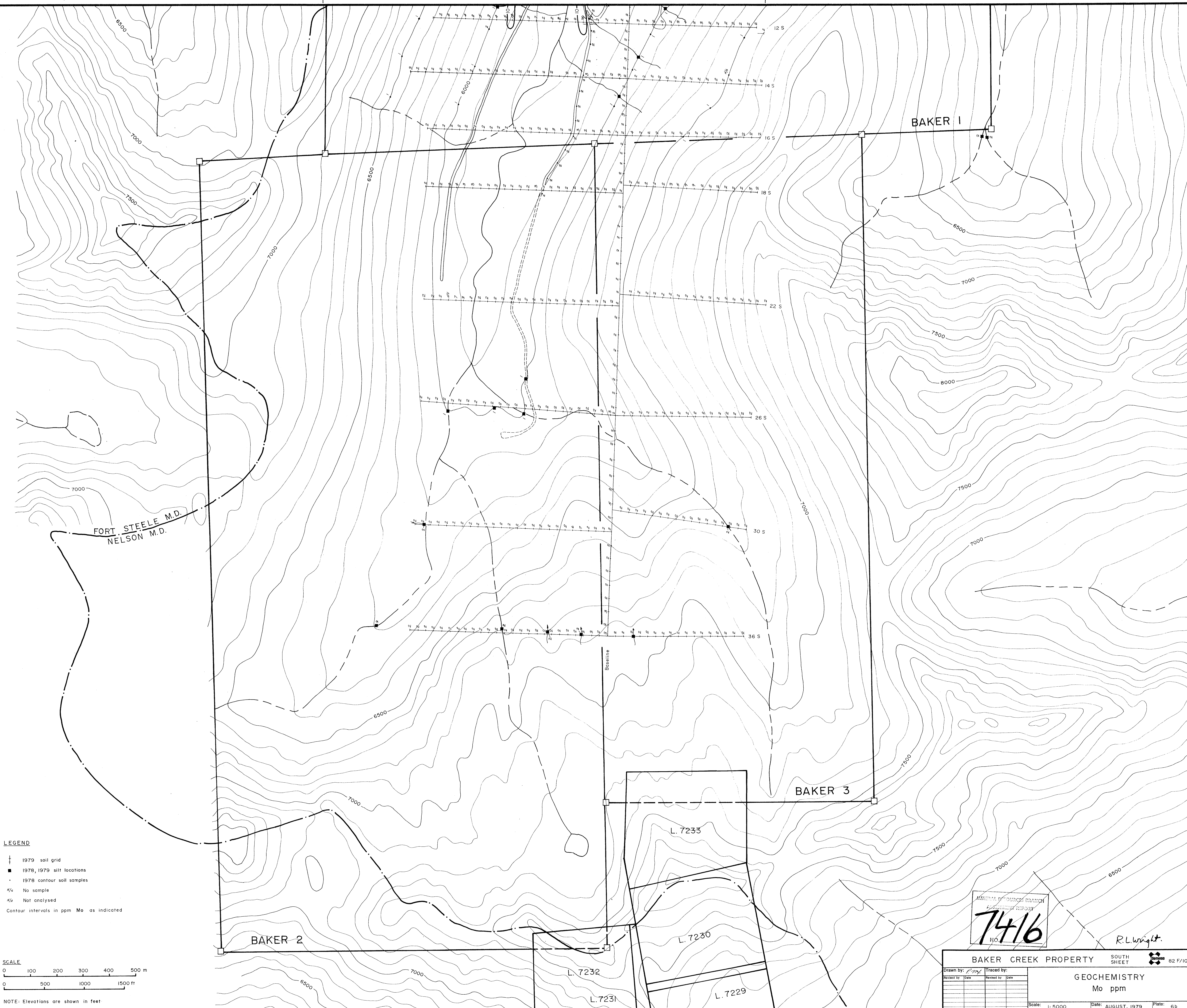
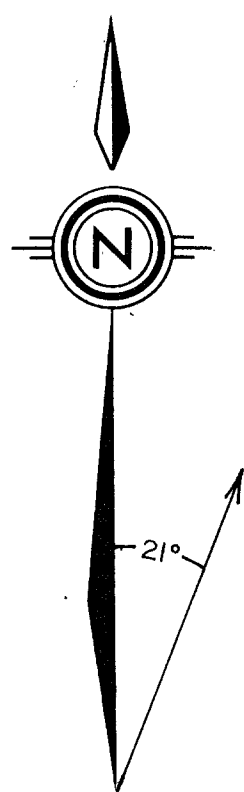
NOTE: Elevations are shown in feet



MINERAL RESOURCE BRANCH
ASSESSMENT REPORT
7416
R.O.

R.L. Wright

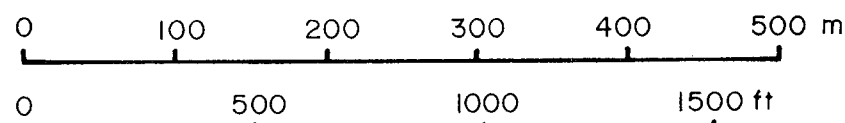
BAKER CREEK PROPERTY		NORTH SHEET		82 F/10	
Drawn by: <i>DM</i>		Traced by:		GEOCHEMISTRY	
Revised by: []		Revised by: []		Mo ppm	
[]		[]		Scale: 1:5000	
[]		[]		Date: AUGUST, 1979	
[]		[]		Plate: 6 c	



LEGEND

- 1979 soil grid
- 1978, 1979 silt locations
- 1978 contour soil samples
- No sample
- Not analysed
- Contour intervals in ppm Mo as indicated

SCALE



NOTE: Elevations are shown in feet

MINERAL & QUARRY BRANCH
LABORATORY REPORT
7416
NO.

R. L. Wright

BAKER CREEK PROPERTY

SOUTH SHEET

82 F/10

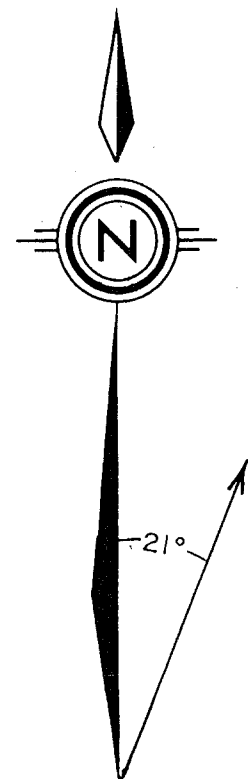
GEOCHEMISTRY
Mo ppm

Drawn by	Traced by
Revised by	Revised by

Scale: 1:5000

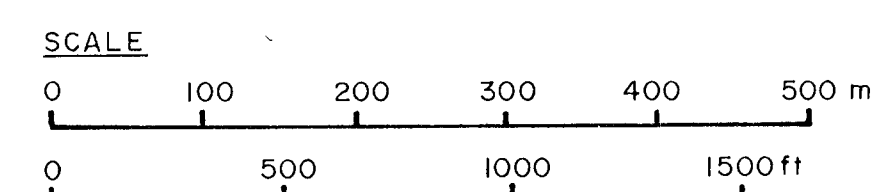
Date: AUGUST, 1979

Plate: 6b

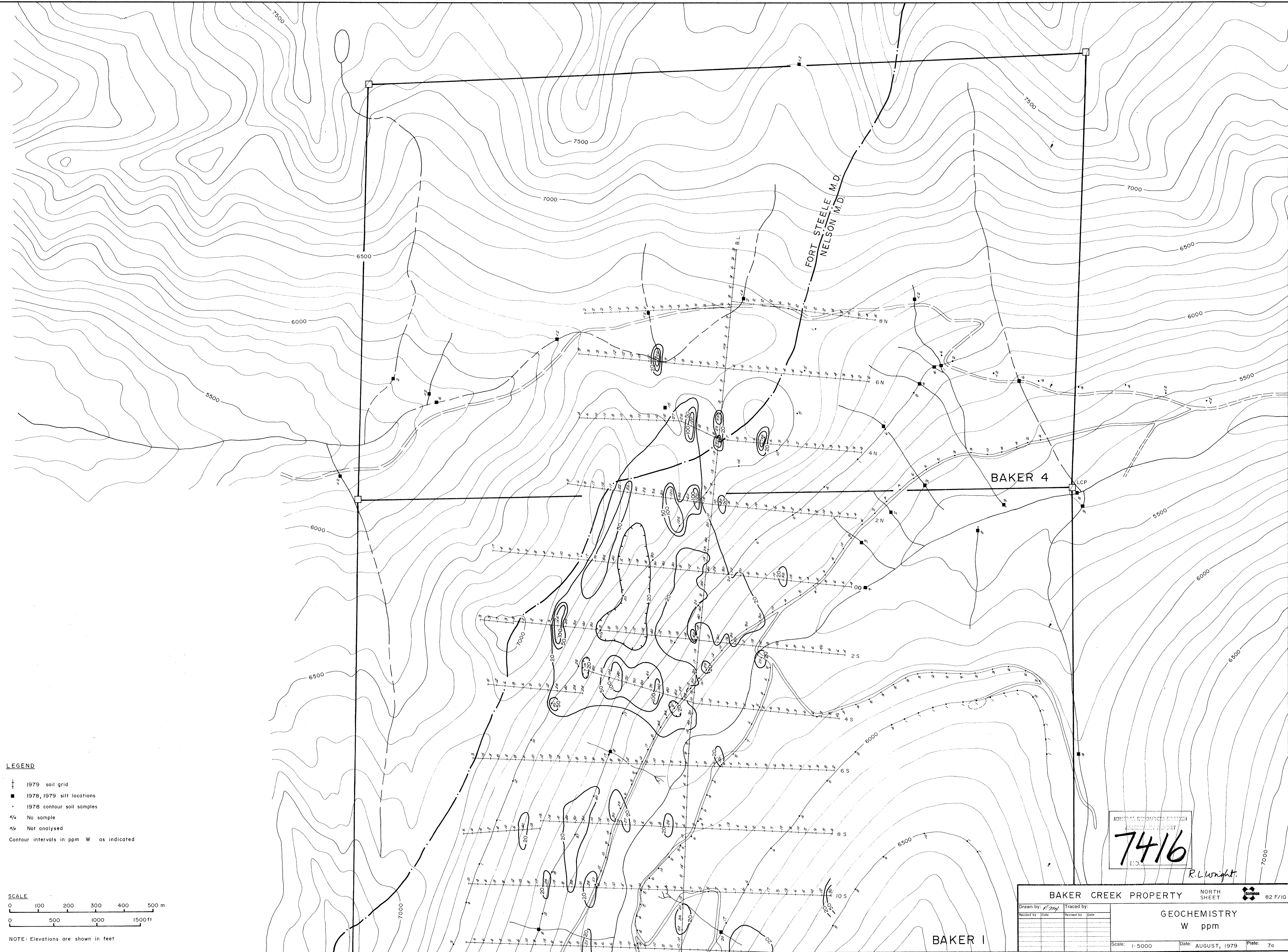


LEGEND

- 1979 soil grid
- 1978, 1979 silt locations
- 1978 contour soil samples
- N/S No sample
- N/A Not analysed
- Contour intervals in ppm W as indicated



NOTE: Elevations are shown in feet



MINERAL RESOURCES BRANCH
GEOCHEMISTRY
7416
1:5000

R. L. Wright

BAKER CREEK PROPERTY

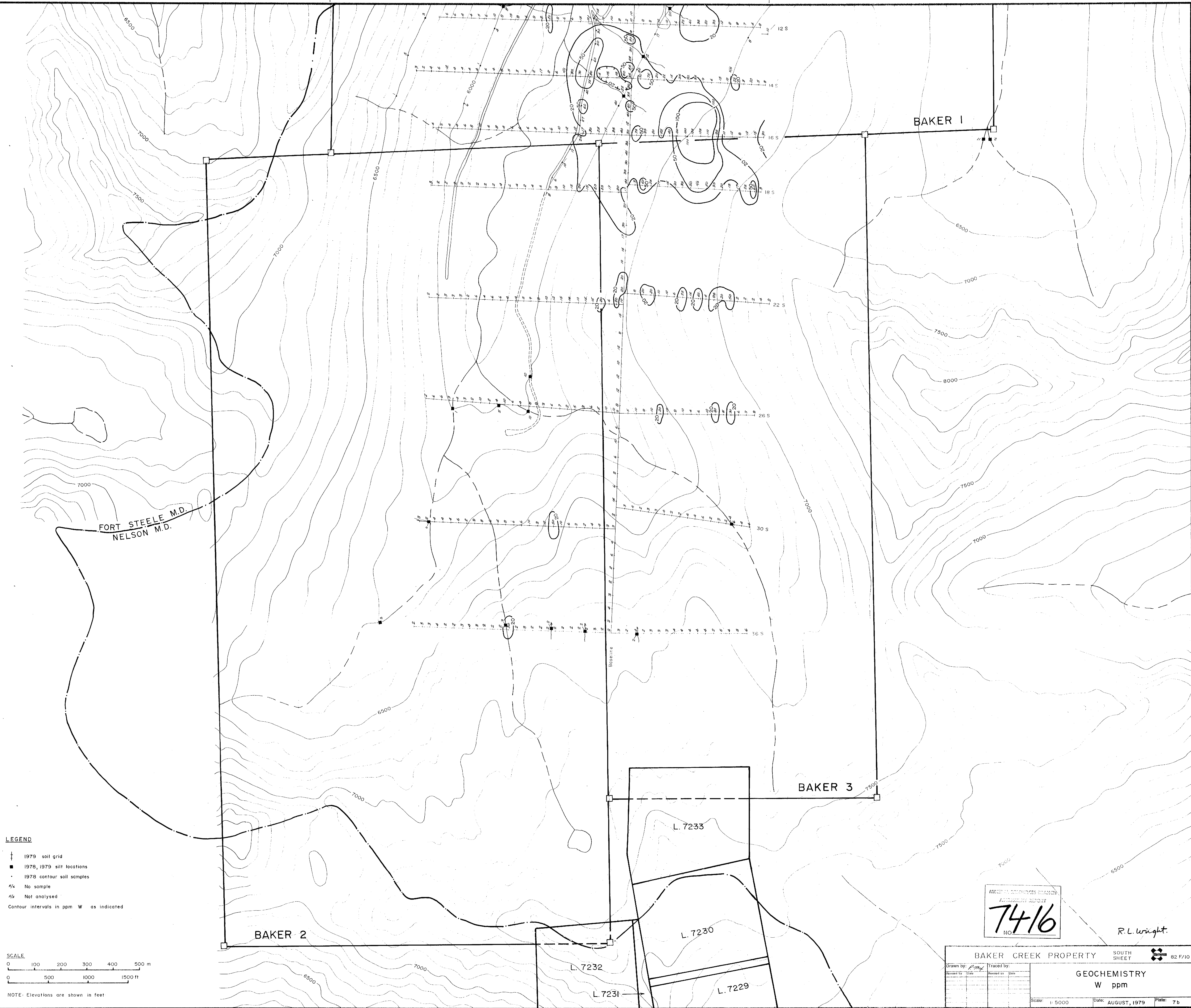
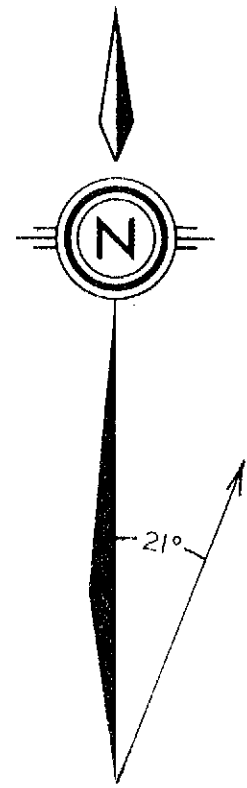
NORTH
SHEET

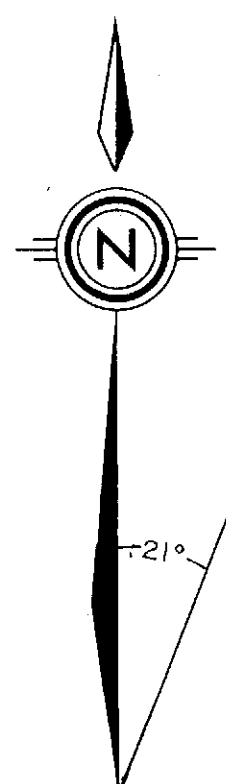
82 F/10

GEOCHEMISTRY
W ppm

Scale: 1:5000 Date: AUGUST, 1979 Plate: 7a

FORM 210 06/0



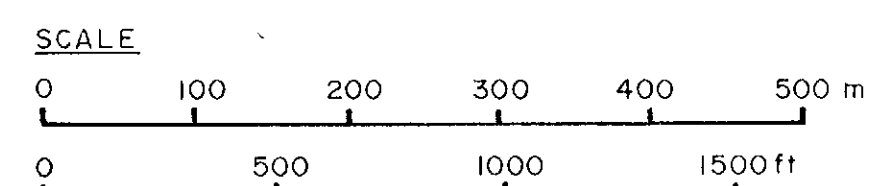


LEGEND

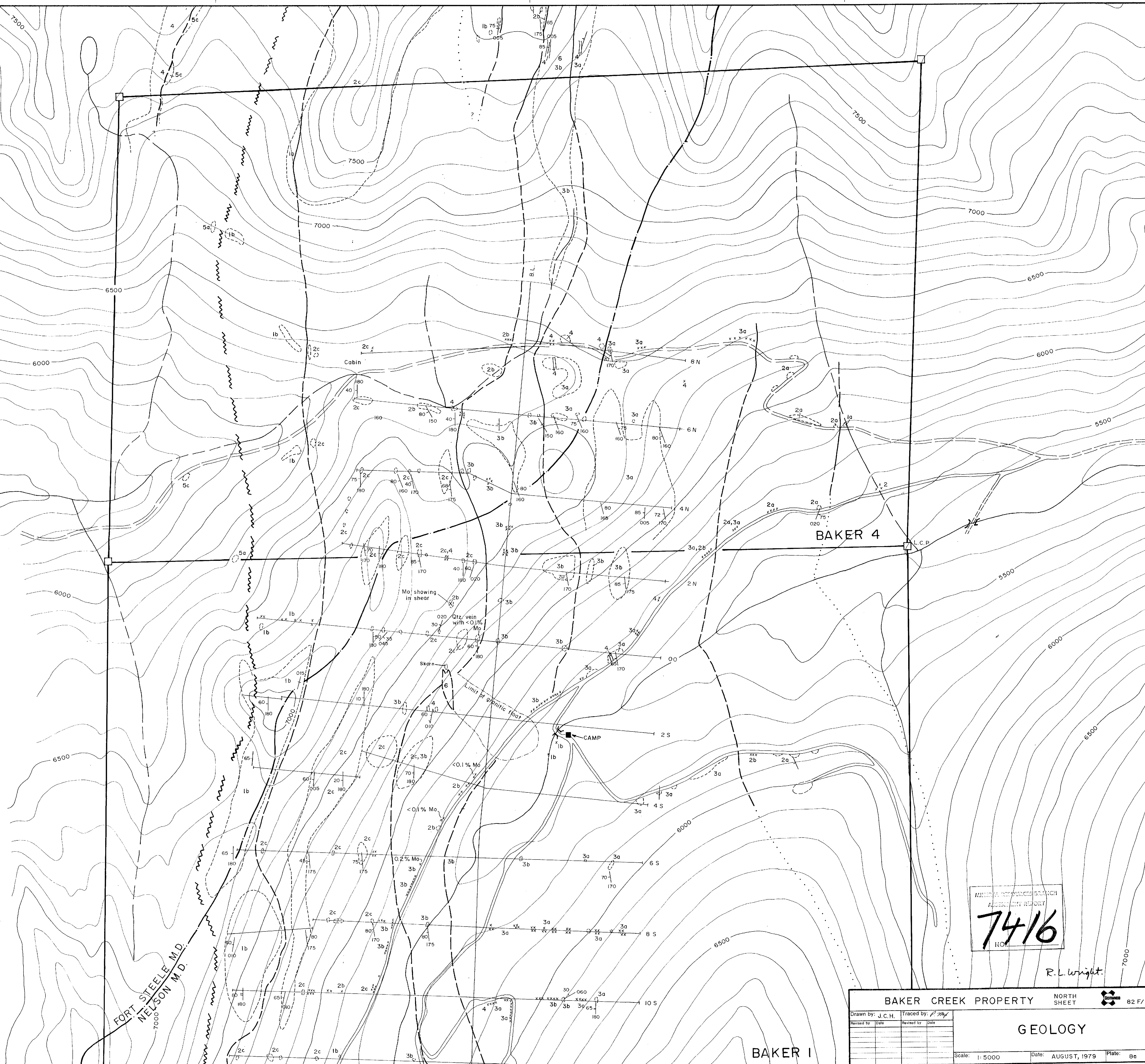
- 6** Granitic Intrusion:
Quartz-monzonite, quartz-eye porphyry, quartz-feldspar porphyry, aplite
- 5** Conglomerate:
5a) phyllitic conglomerate with >15% clasts and calcareous matrix
5b) quartz cobble - pebble conglomerate with 50-90% clasts, matrix slightly calcareous
5c) dolomitic conglomerate with 5-20% quartz clasts, grey to tan-orange weathering
- 4** Amphibolite:
Dark green, with up to 5% pyrite, also greenstone (volcanic) beds
- 3** Quartzite, Quartzose Argillite and Argillite:
3a) green to tan turbidite sequences of quartzite, quartzose argillite and argillite
3b) white quartzite, quartz-mica "schists" with rusty specks common
- 2** Argillite:
2a) thin-bedded, grey-green phyllitic argillite with greasy lustre, rusty weathering with manganese stain
2b) brown-grey partly calcareous banded argillite
2c) grey-white siliceous banded argillite, slightly phyllitic with graphitic and calcareous sections
- 1** Dolomite:
1a) siliceous, yellow-cream colour
1b) orange tan weathering, clean white dolomite with minor grey limestone beds, some silty bands, 1-10 cm beds

SYMBOLS

- foliation
- bedding
- wavy bedding dip/strike approximate
- outcrop or areas of at least 30% outcrop and similar lithology
- float
- geological contact (observed)
- geological contact (approximate)
- geological contact (projected)
- geological contact (unconformable)



NOTE: Elevations are shown in feet



MINERAL RESOURCES BRANCH
APPRAISAL REPORT
7416
R.O.M.

R.L. Wright

BAKER CREEK PROPERTY

NORTH
SHEET

82 F/10

GEOLOGY

Drawn by: J.C.H.	Traced by: R.W.
Revised by: [blank]	Revised by: [blank]
Revised by: [blank]	Revised by: [blank]
Revised by: [blank]	Revised by: [blank]
Revised by: [blank]	Revised by: [blank]

Scale: 1:5000 Date: AUGUST, 1979 Plate: 8c

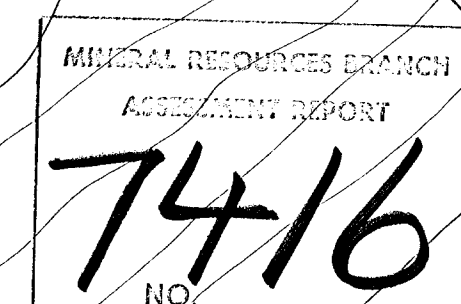
FORM 210 0670



- ## SYMBOLS

- SCALE**
-
- 0 100 200 300 400 500 m
- 0 500 1000 1500 ft

NOTE: Elevations are shown in feet



R.L.Wright.

BAKER CREEK PROPERTY

SOUTH SHEET

 82 F/10

GEOLOGY

Scale: 1:5000	Date: AUGUST, 1979	Plate: 8b
---------------	--------------------	-----------