

COMINCO LTD.

EXPLORATION

NTS: 82 M/13E

WESTERN DISTRICT

August 3, 1979

GEOCHEMICAL ASSESSMENT REPORT

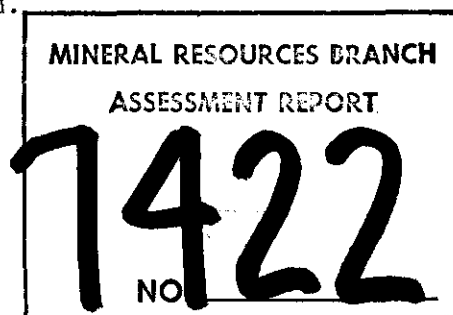
ON THE SI 1 MINERAL CLAIM

in the Kamloops Mining Division

51°46'N Latitude, 119°44'W Longitude

Work Period: June 25, 1979 - July 4, 1979

Owned by: Cominco Ltd.



August, 1979

M.P. Murrell

COMINCO LTD.

EXPLORATION
NTS: 82 M/T3E

WESTERN DISTRICT
August 3, 1979

GEOCHEMICAL ASSESSMENT REPORT

Si 1 CLAIM

Kamloops Mining Division

I. INTRODUCTION

Location

The Si claim is located in the Kamloops Mining Division, twenty-five kilometers northeast of Clearwater B.C.; on the west side of the Raft River, and southwest of Silence Lake.

II. ACCESS

Access to the Si claims is by an excellent logging road that runs along the eastern boundary of the property. This logging road (Road 9) joins the highway just east of Clearwater, and follows along the west side of the Raft River.

III. TOPOGRAPHY

Much of the eastern part of the property is on a very steep valley wall of the Raft River. The western part is flat, plateau-like. All is very heavily bush covered with alder, spruce and fir.

IV. PROPERTY DEFINITION

<u>Claim Name</u>	<u>Units</u>	<u>Record No.</u>	<u>Recorded</u>	<u>Due</u>	<u>Owner</u>
Si 1	20	1359	Aug. 15/79	Aug. 15/79	Cominco Ltd.

V. SUMMARY OF WORK DONE

Five hundred and sixteen soil samples and three silt samples were collected on the property and analysed for lead and zinc. Topographic control was based on an enlarged 1:50,000 scale map. Grid control was by hip-chain chaining, compassing and altimeter reading.

VI. GEOLOGY

The claim units are underlain by meta-sediments and intrusives of the Shuswap Metamorphic Complex. Exposure is quite poor over most of the claim, but pegmatites, monzonites, phyllites, marble, calc-silicates are present. No detail mapping has been carried out on the property, so the relation of the different rock types is not known.

V. GEOCHEMISTRY

A total of five hundred and sixteen soil samples and three silt samples were taken from the property.

A) Sample Collection

Soil samples were taken from the B horizon, when it could be identified, otherwise the sample was taken usually at 10 to 30 cm deep. Samples were dug by shovel and retrieved by plastic spoon or by hand. They were placed in standard Kraft soil sample bags and marked for identification. Each sample location was marked in the field by a grid numbered red flagging. Ground control was by hip chain and compass. No cut-lines were utilized.

B) Sample Preparation

Samples were air dried and shipped to Cominco's lab in Vancouver for analyses. There they were oven-dried, sieved and the minus 80 mesh fraction analysed by hot acid digestion and atomic absorption.

C) Presentation of Data


The results are plotted on a topographic map at a scale of 1:5,000. Anomalous values for zinc are considered to be greater than 200 ppm; and anomalous lead values are considered to be greater than 40 ppm. These results are contoured on the accompanying map.

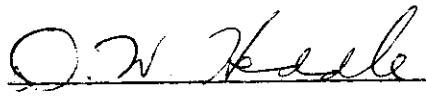
No follow up work has been undertaken to explain the source of the anomalies.


VI. ATTACHMENTS

- a) Appendix "A" - Statement of Expenditures
- B) Appendix "B" - Affidavit
- c) Appendix "C" - Statement of Qualifications
- d) Location Map - Scale: 1:250,000

e) Geochemical Map - Scale: 1:5,000

Report by: 
M.R. Murrell
Project Geologist

Approved by:  for F.D.G.
F.D. Gill
Senior Geologist

Approved for
Release by: 
G. Harden, Manager
Exploration, Western
District

MRM/pc1

COMINCO LTD.

EXPLORATION
NTS: 82 M/13E

WESTERN DISTRICT
August 3, 1979

APPENDIX "A"

Statement of Expenditures
Incurred in Connection with a Geochemical Survey
of the Si 1 Mineral Claim
Kamloops Mining Division

I. STAFF SALARIES

F.D. Gill - 1 day (June 25) - @ \$200/day	\$ 200.00
M.R. Murrell - 1 day (June 25) @ \$167.20/day	167.20
P. Levasseur - 6 days in the period between June 25 and July 4, 1979 @ \$63.37/day	380.22
I. Mitchell - 6 days in the period between June 25 and July 4, 1979 @ \$63.37/day	380.22
S. Olson - 6 days in the period between June 25 and July 4, 1979 @ \$60.70/day	<u>364.20</u>
	\$1,491.84

II. FOOD AND ACCOMODATIONS

20 man days between June 25 and July 4, 1979 @ \$15/day	300.00
---	--------

III. TRANSPORTATION

Truck rental - 6 days @ \$21.80	- \$130.80
Gas, etc.	- <u>20.00</u>
	150.80

IV. ANALYSES CHARGES

519 Samples @ \$2.40/sample \$1,245.60

V. FIELD EQUIPMENT AND SUPPLIES

Maps, flagging, hip chain thread, packs,
altimeters, shovels, etc. pro-rated 100.00

TOTAL PROJECT COST

\$3,288.24

COMINCO LTD.

EXPLORATION
NTS: 82 M/13E

WESTERN DISTRICT
August 3, 1979

APPENDIX "B"

In the matter of a Geochemical Survey
carried out on portions of the Si l Claim
located near Silence Lake in the
Kamloops Mining Division of British Columbia,
More Particularly N.T.S. 82 M/13E

A F F I D A V I T

I, M.R. Murrell, of the district of North Vancouver, in the Province of British Columbia, hereby declare:

- 1) That I am employed as a geologist by Cominco Ltd., and as such, have a personal knowledge of the facts to which I hereinafter depose;
- 2) That annexed hereto and marked as Appendix "A" to this report is a true copy of expenditures incurred in connection with geochemical surveys on the Si l mineral claim.
- 3) That the said expenditures were incurred between the 25th day of June and the 4th day of July, 1979 for the purpose of conducting a geochemical survey.

Signed: _____



M.R. MURRELL

COMINCO LTD.

EXPLORATION
NTS: 82 M/T3E

WESTERN DISTRICT
August 3, 1979

APPENDIX "C"

Statement of Qualifications

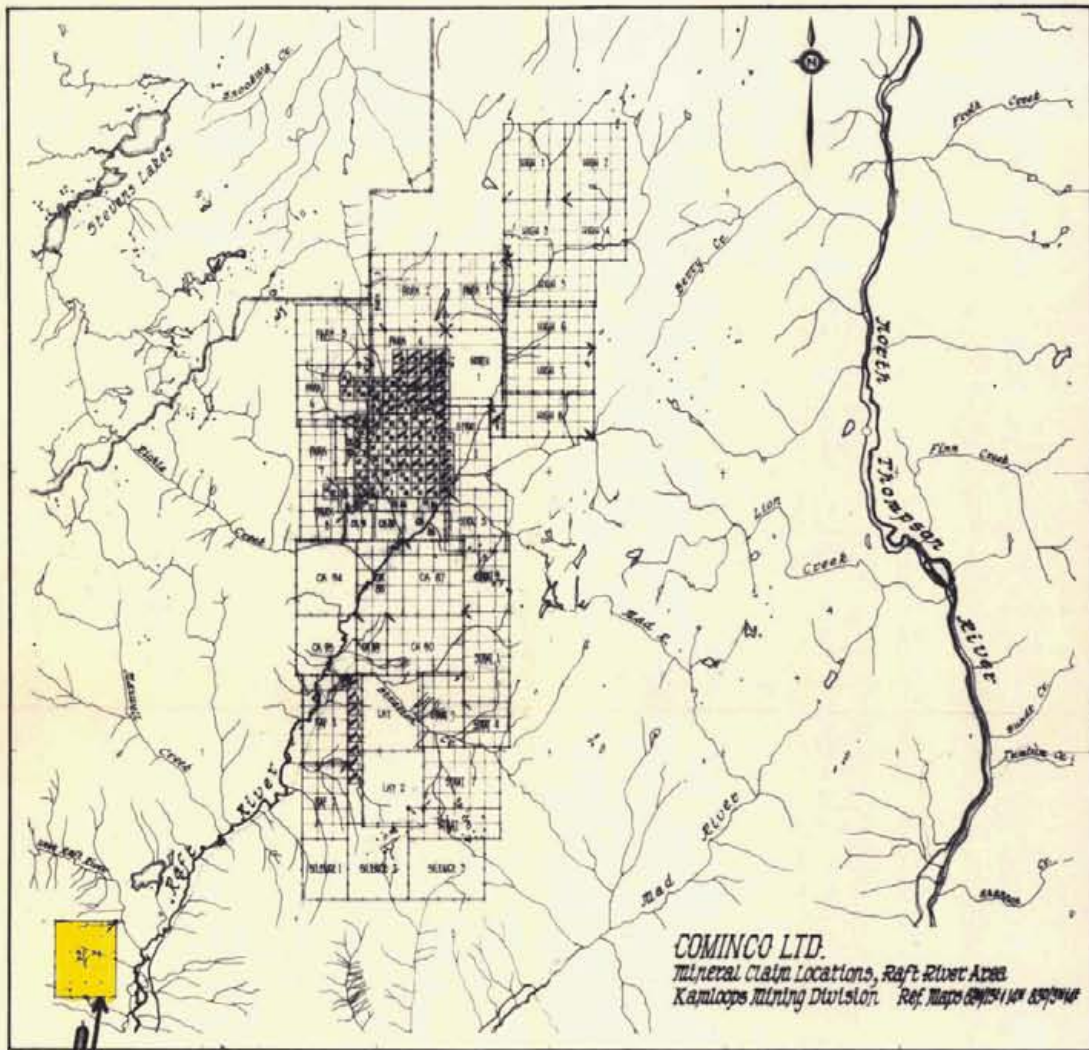
I, Michael Ray Murrell, hereby declare that I was graduated from the University of Alberta with an Honours B.Sc. in Geology during May, 1966. During my undergraduate summers I was employed on geological programs by B.A. Oil (now Gulf Oil) and by a small mining company. Upon graduation I joined Cominco Ltd. and have been engaged in many aspects of mining exploration since that time.

Dated this 4th day of September, 1979
at Vancouver, British Columbia

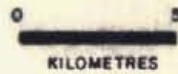
Signed: _____

M. R. Murrell

M.R. MURRELL



SI-1 CLAIM



MINERAL RESOURCES BRANCH
 ASSESSMENT REPORT
7422
 NC

M. H. Marshall



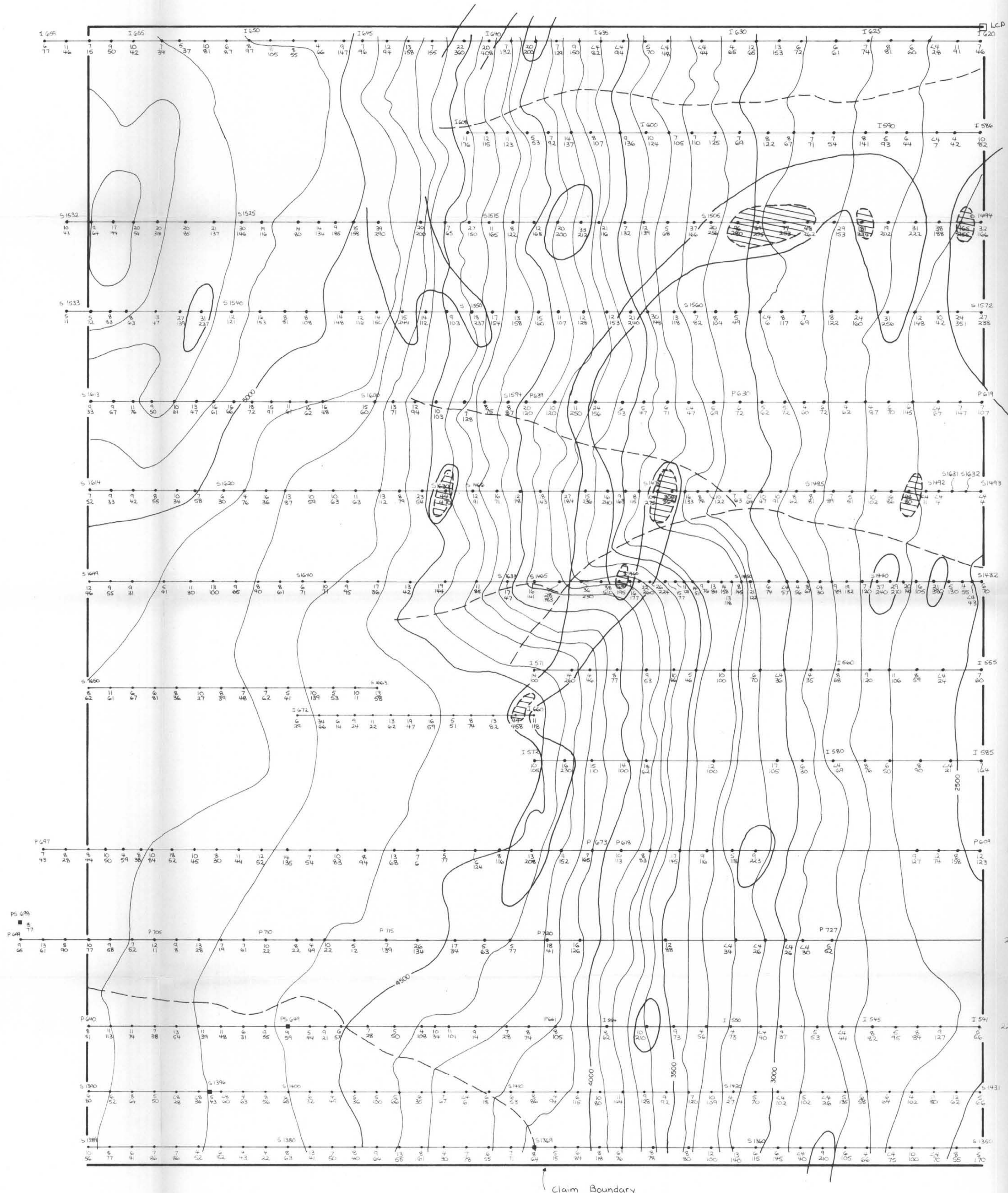
Drawn by:		Traced by: SAW	
Revised by	Date	Revised by	Date

LOCATION MAP
 Si-1 CLAIM.

Scale: 1 : 250,000

Date: August 1979

Plate:



MINERAL RESOURCES
ASSESSMENT REPORT
7422
NO.

Legend
Pb, Zn ppm
○ > 200 ppm Zn = Anomalous
◐ > 40 ppm Pb = Anomalous
0 100 200 300
Metres

M. J. Stewart

Contour interval = 100 ft

SI CLAIM			
Drawn by:	Traced by: SAW	Pb, Zn GEOCHEMISTRY	
Revised by: Date	Revised by: Date		
		Scale: 1: 5000	Date: August 1979
			Plate: