

COMINCO LTD.

EXPLORATION
NTS: 82M/13E

WESTERN DISTRICT

GEOCHEMICAL ASSESSMENT REPORT

DURING JULY 9 - 24, 1979

ON MINERAL CLAIM CK 90

KAMLOOPS M.D., B.C.

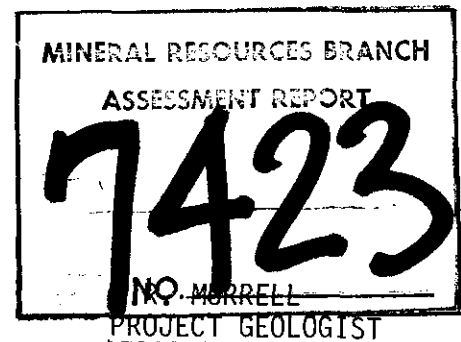
LATITUDE: 51°56'

LONGITUDE: 119°35'

UNDER SUPERVISION OF

F.D. GILL, SENIOR GEOLOGIST

SEPTEMBER 4, 1979



COMINCO LTD.

EXPLORATION
NTS: 82M/13E

WESTERN DISTRICT
13 AUGUST 1979

GEOCHEMICAL ASSESSMENT REPORT

CK 90 CLAIM

KAMLOOPS MINING DIVISION

I. INTRODUCTION

Location

The CK 90 claim is located in the Kamloops Mining Division, forty-three kilometers northeast of Clearwater, B.C. It is situated on the east side of the Raft River, just north of Stratton Creek.

II. ACCESS

Access to the general area is by a logging road that runs along the Raft River from Clearwater. Better access is periodically possible by logging roads that start near Avola and cross the Mad River. Since this road was not passable when the geochemical survey was conducted, it was necessary to mobilize and demobilize by helicopter (Okanagan, from Revelstoke).

III. TOPOGRAPHY

Much of the western portion of CK 90 consists of a fairly steep tree and brush covered side hill. The eastern portion is flat to rolling, containing scattered swampy areas.

IV. PROPERTY DEFINITION

<u>Claim Name</u>	<u>Units</u>	<u>Record No.</u>	<u>Recorded</u>	<u>Due Date</u>	<u>Owner</u>
CK 90	20	1363	Aug. 15/78	Aug. 15/79	Cominco Ltd.

V. SUMMARY OF WORK DONE

Three hundred and forty-nine soil samples were collected on the property and analyzed for lead and zinc. Topographic control was based on a 1:5,000 topographic map prepared by McElhanney Surveying. Grid control was by hip-chain chaining, compassing and altimeter reading.

VI. GEOLOGY

The claims are underlain by metasediments and intrusives of the Shuswap Metamorphic Complex. Exposure is quite poor over much of the claim, but limited mapping has suggested that limy and siliceous calc-silicates, biotite gneisses, marbles, and pegmatites likely underlie the extensive overburden. One small showing of disseminated ZnS was discovered.

2.

V. GEOCHEMISTRY

A total of three hundred and forty-nine soil samples were taken from CK 90 claim.

A. Sample Collection

Soil samples were taken from the B horizon, when it could be identified, otherwise the sample was taken usually at 10 to 30 cm deep. Samples were dug by shovel and retrieved by plastic spoon or by hand. They were placed in standard kraft soil sample bags and marked for identification. Each sample location was marked in the field by a grid numbered orange flagging. Ground control was by hip chain and compass. No cut lines were utilized.

B. Sample Preparation

Samples were air-dried and shipped to Cominco's Lab in Vancouver for analyses. There they were oven dried, sieved and the minus 80 mesh fraction analyzed by hot acid digestion and atomic absorption.

C. Presentation of Data

The results are plotted on a topographic map at a scale of 1:5,000. Anomalous values for zinc are considered to be greater than 200 ppm; and anomalous lead values are considered to be greater than 40 ppm. These results are contoured on the accompanying map. Anomalous values at the south end may be associated with the small showing found during the summer. No follow-up has yet been carried out to explain the source of other anomalies.

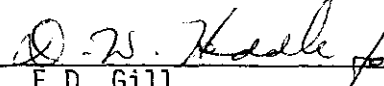
VI. ATTACHMENTS

- a) Appendix "A" Statement of Expenditures
- b) Appendix "B" Affidavit
- c) Appendix "C" Statement of Qualifications
- d) Location map - scale 1:250,000
- e) Geochemical map - scale 1:5,000

Report by:


M.R. Murrell
Project Geologist

Endorsed by:


F.D. Gill
Senior Geologist

Approved for
Release by:


G. Harden, Manager

MRM:gk

APPENDIX "A"
STATEMENT OF EXPENDITURES
INCURRED IN CONNECTION WITH A GEOCHEMICAL SURVEY
OF THE CK 90 MINERAL CLAIM
KAMLOOPS MINING DIVISION

I. STAFF SALARIES

F.D. Gill 1 day (July 20) @ \$200/day	\$ 200.00
M.R. Murrell 1 day (July 19) @ 167.20/day	167.20
P. Levasseur 5 days in the period July 9-July 24, 1979 5 days @ 63.37/day	316.85
I. Mitchell 5 days in the period July 9-July 24, 1979 5 days @ 63.37/day	316.85
S. Olsen 5 days in the period July 9-July 24, 1979 5 days @ 60.70/day	303.50

II. FOOD AND ACCOMODATION

17 man days between July 9-July 24, 1979 17 @ \$15/day - 255.00	255.00
--------------------------------------------------------------------	--------

III. TRANSPORTATION

Helicopter (July 20) - 2.2 hours @ 370/hr.	814.00
--------------------------------------------	--------

IV. ANALYSES CHARGES

349 samples @ 2.40	753.60
--------------------	--------

V. FIELD EQUIPMENT AND SUPPLIES

Maps, flagging, hip chain thread, packs, altimeters, shovels, etc. pro-rated - 50.00	<u>50.00</u>
-----------------------------------------------------------------------------------------	--------------

<u>TOTAL PROJECT COST -</u>	<u>\$3,177.00</u>
-----------------------------	-------------------

APPENDIX "B"
IN THE MATTER OF A GEOCHEMICAL SURVEY
CARRIED OUT ON THE CK 1 CLAIM
LOCATED NEAR THE RAFT RIVER AND STRATTON CREEK
IN THE KAMLOOPS MINING DIVISION OF BRITISH COLUMBIA
MORE PARTICULARLY NTS: 82M/13E

A F F I D A V I T

I, M.R. Murrell, of the district of North Vancouver, in the Province of British Columbia, hereby declare:

1. THAT I am employed as a geologist by Cominco Ltd., and as such, have a personal knowledge of the facts to which I hereinafter depose;
2. THAT annexed hereto and marked as Appendix "A" to this report is a true copy of expenditures incurred in connection with geochemical surveys on the CK 90 mineral claim;
3. THAT the said expenditures were incurred between the 9th day of July and the 24th day of July, 1979 for the purpose of conducting a geochemical survey.

Signed: _____



M.R. Murrell
Project Geologist

MRM/gk

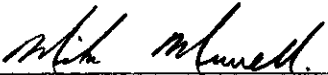
APPENDIX "C"

STATEMENT OF QUALIFICATIONS

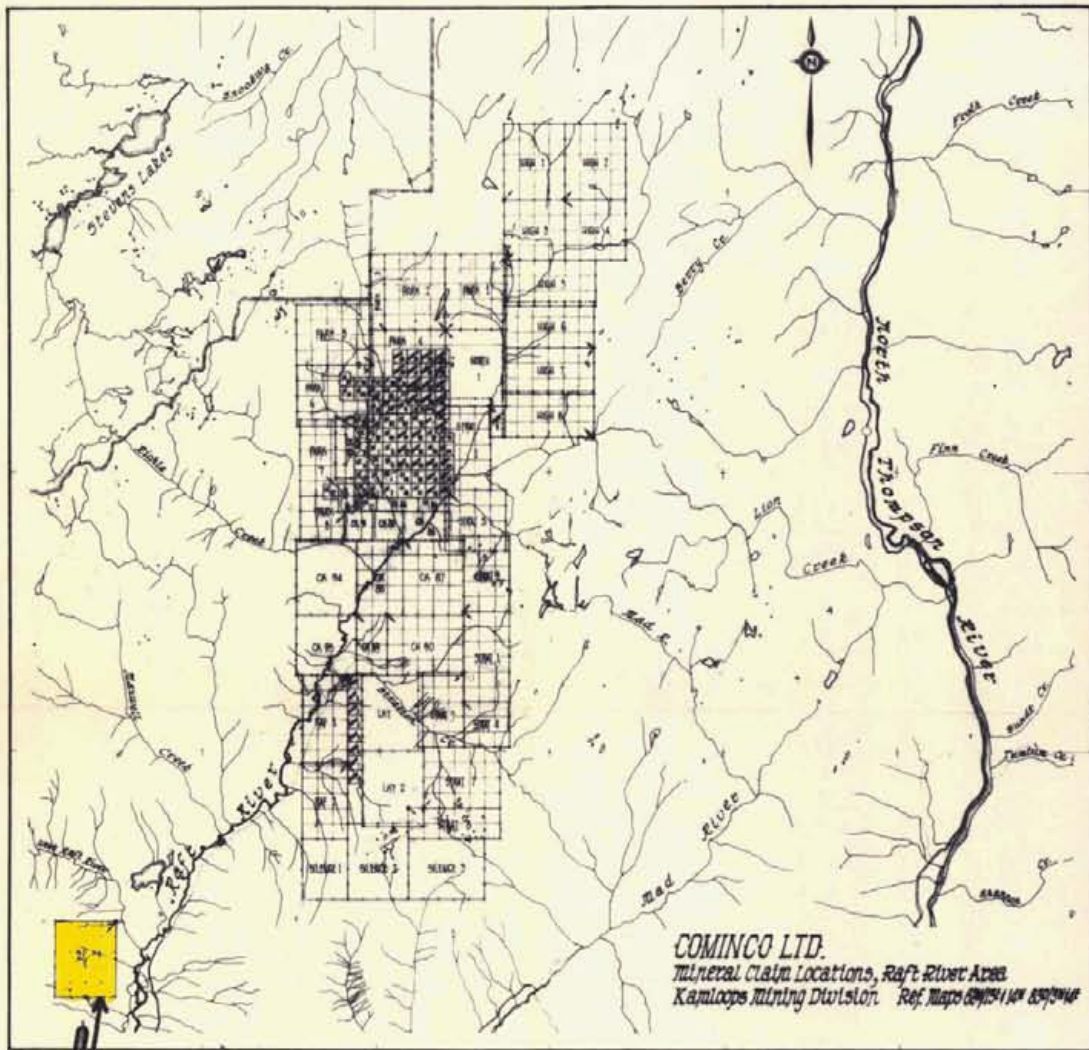
I, Michael Ray Murrell, hereby declare that I graduated from the University of Alberta with an Honors B.Sc. in geology during May 1966. During my undergraduate summers I was employed on geological programs by B.A. Oil (now Gulf Oil), and by a small mining company. Upon graduation I joined Cominco Ltd. and have been engaged in many aspects of mining exploration since that time.

Dated this 30th day of August,
1979 at Vancouver, British
Columbia.

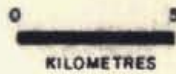
Signed: _____


M.R. Murrell
Project Geologist

MRM/gk



SI-1 CLAIM



MINERAL RESOURCES BRANCH
ASSESSMENT REPORT
7422
NO

M.H. Marshall



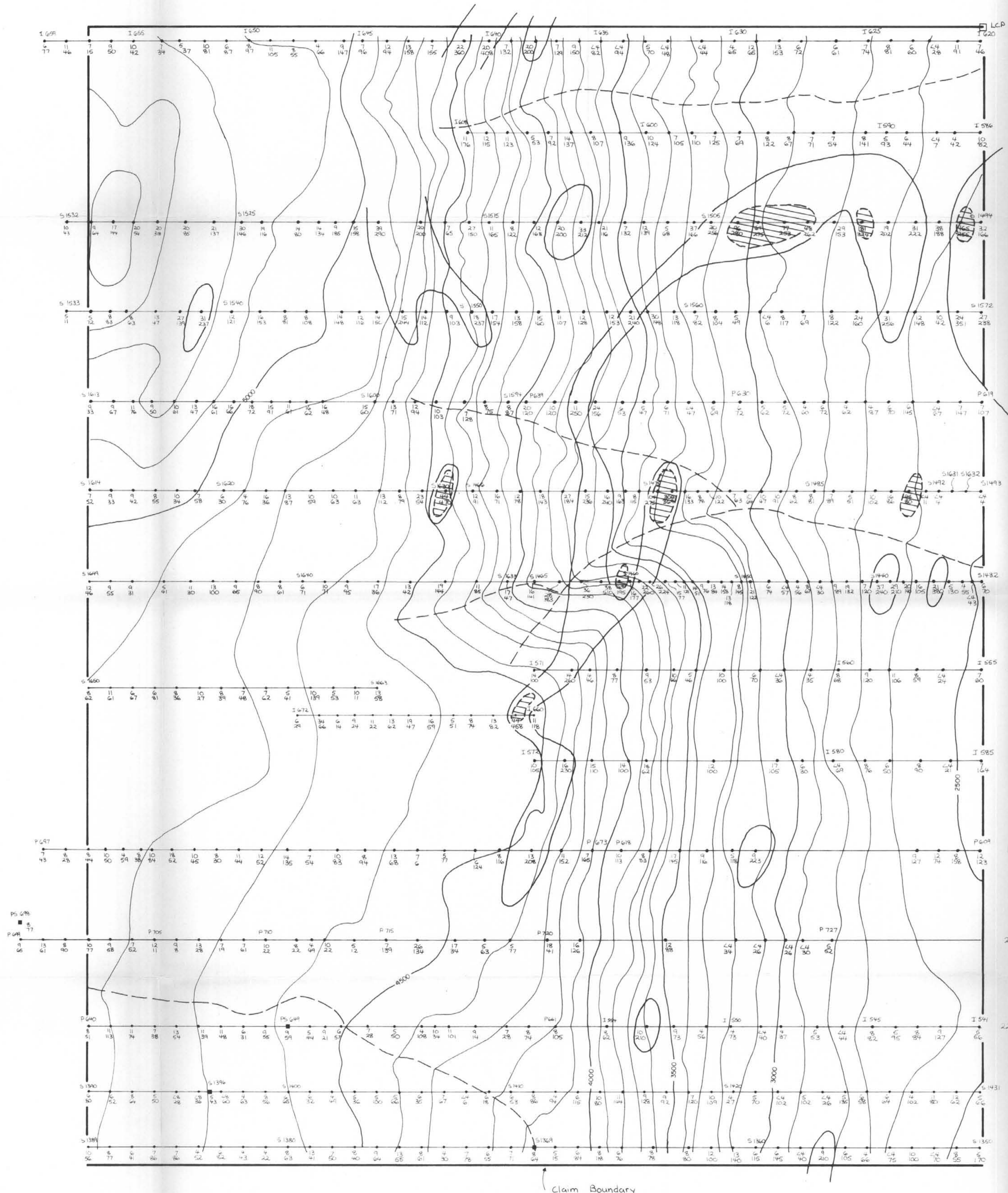
Drawn by:		Traced by: SAW	
Revised by	Date	Revised by	Date

LOCATION MAP
Si-1 CLAIM.

Scale: 1 : 250,000

Date: August 1979

Plate:



MINERAL RESOURCES
ASSESSMENT
7422
NO.

Legend
Pb, Zn ppm
○ > 200 ppm Zn = Anomalous
◐ > 40 ppm Pb = Anomalous
0 100 200 300
Metres

Contour interval = 100 ft
M. J. Stewart

SI 1 CLAIM		Pb, Zn GEOCHEMISTRY	
Drawn by:	Traced by: SAW	Scale: 1: 5000	Date: August 1979
Revised by:	Revised by:	Plate:	