

ASSESSMENT REPORT

TYPE: DIAMOND DRILLING
CLAIMS: CC-1 to 11 inc.
MINING DIVISION: KAMLOOPS
NTS LOCATION: 92P/8E
LATITUDE: 51°23'
LONGITUDE: 120°04'
OWNER: CRAIGMONT MINES LIMITED
OPERATOR: " " "
AUTHOR: N.B. VOLLO, P.ENG.
DATE: August 16th, 1979

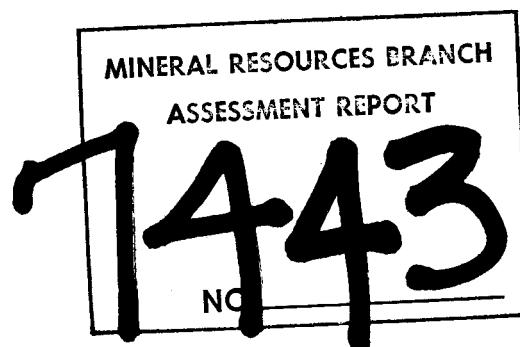


TABLE OF CONTENTS

Location and Access	1
Claims	1
History and Previous Work	1
Geology	1
Drill Program	1
Core Storage	1
Qualifications	1
Statement of Expenditures	2
Location Map	3
Drill log, CC-37	4
Drill Plan, 1:2500	7

LOCATION AND ACCESS

The CC group is located on Chu Chua Mountain, about 20 km north of Barriere, and is readily accessible by four wheel drive vehicles from the Birk Creek logging road.

CLAIMS

The property consists of the following claims:

- CC-1, record number 1154
- CC-2, -3, record numbers 1373, 1374
- CC-4, -8, " " 1424, 1428
- CC-5-7, 9-11, record numbers 1455-57, 1458-60,

totalling 150 units, all in the Kamloops M.D. and held by Craigmont Mines Limited.

HISTORY AND PREVIOUS WORK

Claims have been held previously in the immediate area but little work was done. A stream sediment survey in 1977 by Vestor Explorations Ltd. located a large gossan on the south slope of Chu Chua mountain, anomalously high in copper. This gossan, apparently transported from higher up slope, was traced by the writer to its source, where it consists of a small (10 m²) limonite gossan near a northerly striking massive magnetite body. The property was optioned and subsequently drilled, with a total of 2843 metres in 23 holes completed in 1978

GEOLOGY

The property is underlain by rocks of the Fennell formation (Campbell, R.B., and Tipper, H.W., GSC Mem. 363, 1971). These consist predominantly of andesites and dacites, some of which are pillowed, and minor rhyolite and tuffite, that strike north, dip steeply and face west. A body of massive sulfides occurs conformably, and interbedded with massive magnetite, within a rhyolite flow breccia, enclosed by dacite flows. The sulfide zone is composed mostly of pyrite, with lesser chalcopyrite, minor sphalerite and less than 20% gangue minerals.

DRILL PROGRAM

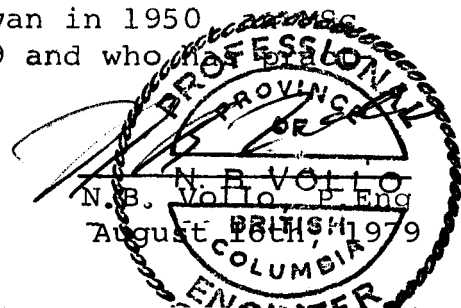
Hole CC-37 was drilled to test the rhyolite horizon which extends northerly from the sulfide zone.

CORE STORAGE

Core is stored in racks on site.

QUALIFICATIONS

The core was logged by the writer, who obtained a BA in Geology from the University of Saskatchewan in 1950 in Geology from McGill University in 1959 and who practiced his profession for 29 years.



H. ALLEN DIAMOND DRILLING LTD.

TELEPHONE 378-4494

----- 2 -----

P.O. BOX 1397
MERRITT, B.C.

Invoice No. 519 - Barriere property - August 7, 1979.

Mud used in Hole No. 35:

21 Bags Quik Gel @ \$6.30 per bag (50 lbs.).....	\$	132.30
21 bags Quik Trol @ \$8.28 per 1 kg. bag.....	\$	173.88
21 gal. Diesel @ 77.3¢ per gal.....	\$	16.23
5 gal. Kutwell @ \$13.00 per 5 gal.....	\$	13.00

Casing left in Hole No. 35:

1 - 5 ft. BW casing @ \$50.81 each.....	\$	50.81
1 - 2 ft. BW casing @ \$23.66 each.....	\$	23.66
1 BW casing shoe @ \$213.89 per shoe.....	\$	213.89

Hole No. 37 casing 9.2 meters @ \$51.50 per meter.....	\$	473.80
Hole No. 37 coring from 9.2 meters to 146.5 meters- 137.3 meters @ \$41.50 per meter.....	\$	5,697.95

Mud used in Hole No. 37:

38 bags Quik Gel @ \$6.30 per bag.....	\$	239.40
38 bags Quik Trol @ \$8.28 per bag.....	\$	314.64
38 gals. Diesel @ 77.3¢ per gal.....	\$	29.37
10 gals. Kutwell @ \$13.00 per 5 gal.....	\$	26.00

Cementing hole - 6½ hrs. @ \$25.00 per hour.....	\$	162.50
2 bags Cal Seal Cement @ \$47.95 per bag.....	\$	95.90
1 bag Fondu Cement @ \$29.82 per bag.....	\$	29.82

Bits and Shells used in starting Hole No. 32, 34 and 35 - Bits No. 6H18128.....	\$	494.80
Hole # 37-" No. 6H18129.....	\$	494.80
Shell.....	\$	358.96

Hole 37 subtotal 7205.22

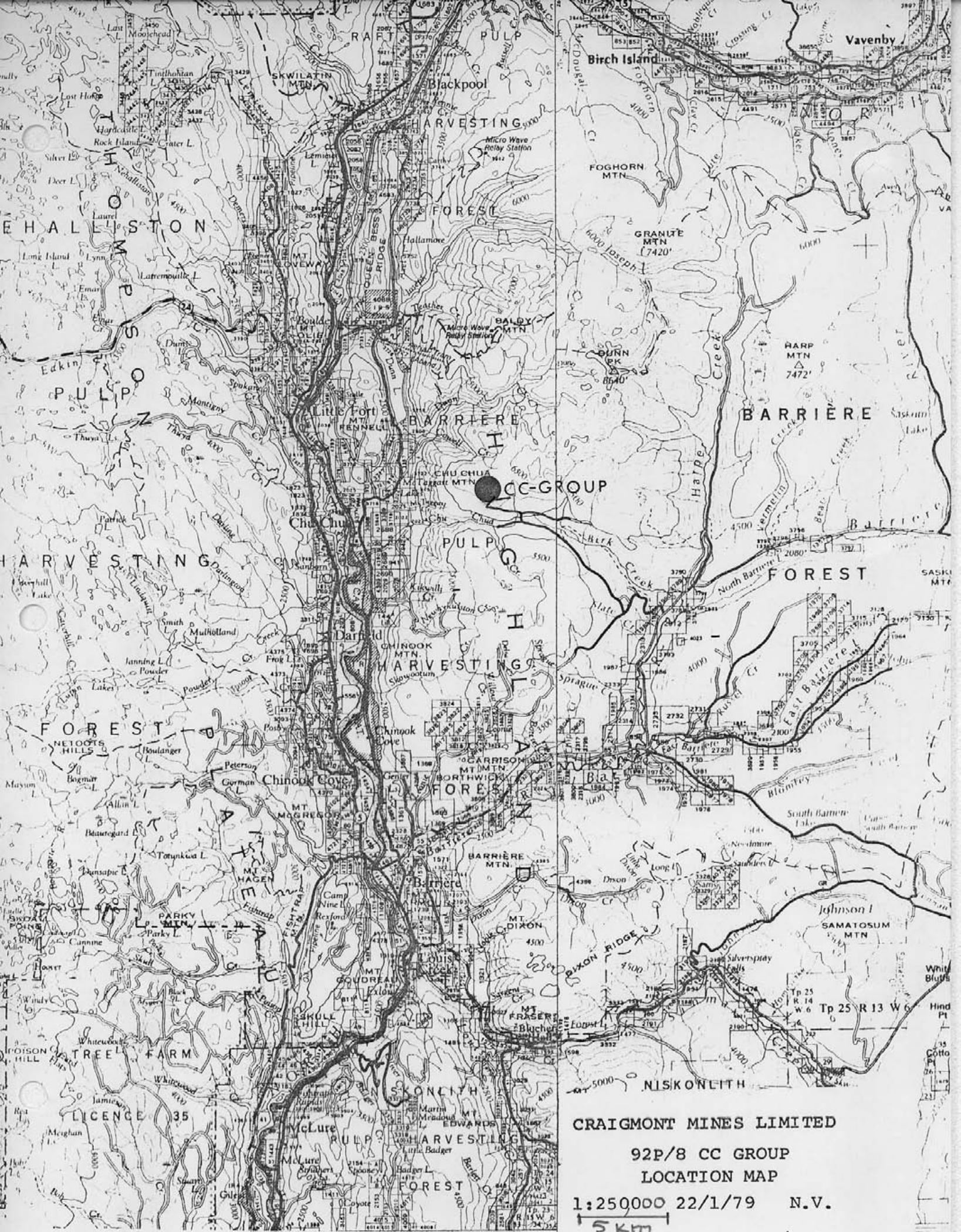
Total tractor time to July 31, 1979 - 25½ hours @ \$30.00 per hour.....	\$	765.00
	\$	<u>25,880.31</u>

Contractor's Representative

Company's Representative

H. Allen

[Signature]



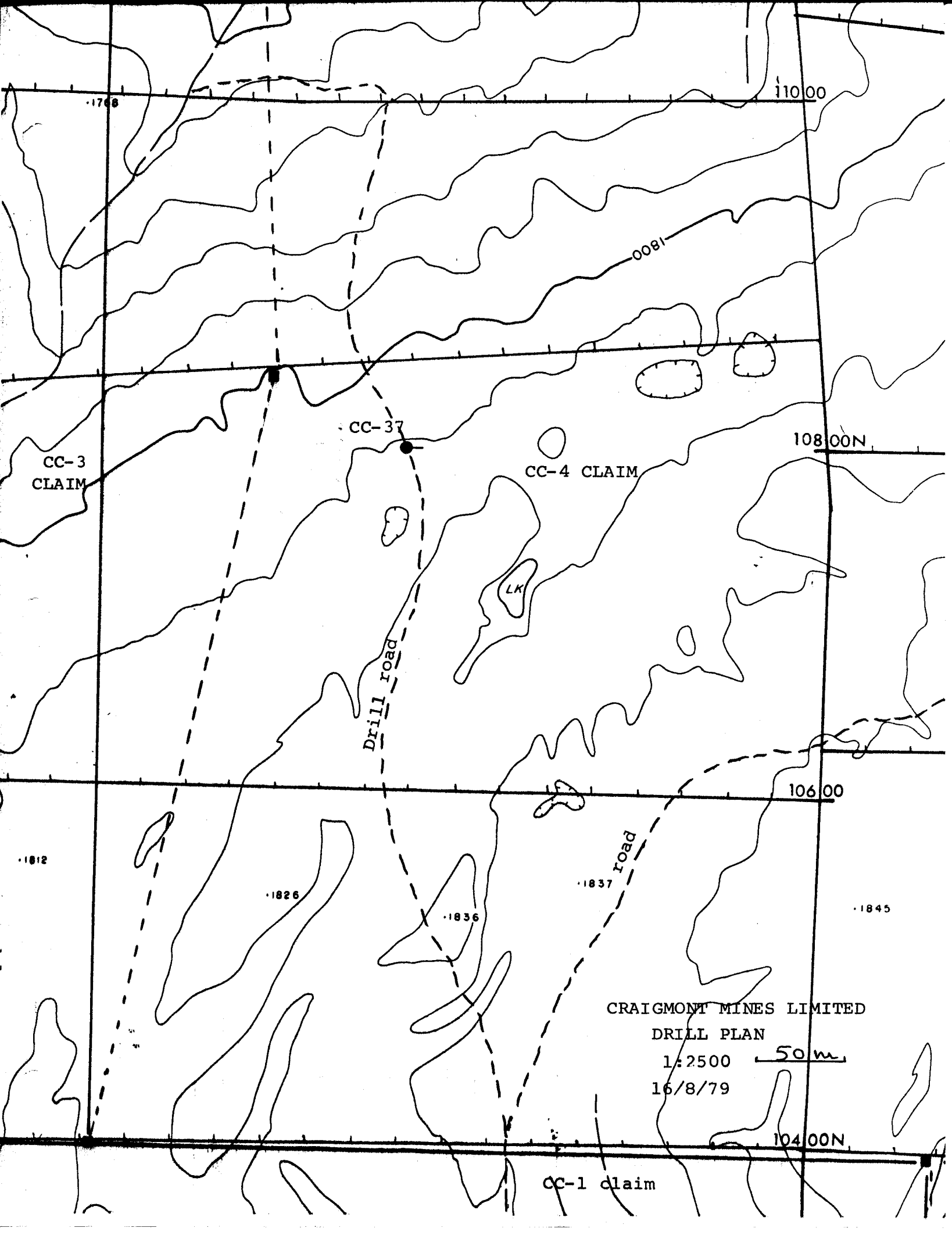
CRAIGMONT MINES LIMITED

92P/8 CC GROUP

LOCATION MAP

1:250000 22/1/79 N.V.

5 km



11000

1768

0081

CC-3
CLAIM

CC-37

CC-4 CLAIM

10800N

LK

Drill road

10600

1812

1826

1836

1837

road

1845

CRAIGMONT MINES LIMITED

DRILL PLAN

1:2500

50m

16/8/79

10400N

CC-1 claim