

COMINCO LTD.

EXPLORATION
NTS: 92 H/9E

WESTERN DISTRICT
August 20, 1979

GEOCHEMICAL ASSESSMENT REPORT

ON THE FOLLOWING CLAIMS

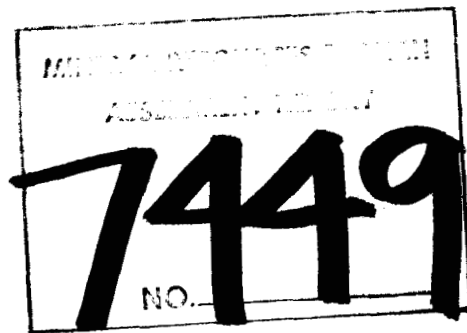
HP #1 to 6 inclusive

IN THE SIMILKAMEEN MINING DIVISION

49°39' LATITUDE; 120°05'W LONGITUDE

WORK PERIOD: MAY 9, 1979 - MAY 25, 1979

OWNED BY H.L. WILLIAMS, FMC 168698 AND PATRICK CREAM, FMC 168727



AUGUST, 1979

W.P. ARMSTRONG, P.Eng.

COMINCO LTD.

EXPLORATION
NTS: 92 H/9E

WESTERN DISTRICT
August 20, 1979

GEOCHEMICAL ASSESSMENT REPORT

HP #1 to 6 CLAIMS

SIMILKAMEEN MINING DIVISION

INTRODUCTION

Location and Access

This property is located in the Similkameen Mining Division, approximately 3 km east of the eastern end of Osprey Lake, between elevations 3500 feet and 4500 feet.

Access to the property is gained by a rough dirt road which turns southward off the Princeton-Summerland road, approximately 1 km east of the Mazama Ranch. Trout Creek can be forded by 4-wheel drive vehicle only at low water; otherwise access is by foot along an overgrown logging road which bisects the property.

Topography and Vegetation

Relief in this part of the country is moderate and subdued as is typical of the Intermontane Belt. Dominant boreal types are spruce and fir which are mature and are being harvested on the lower slopes.

Property Definition

<u>Claims</u>	<u>Units</u>	<u>Record No.</u>	<u>Recorded</u>	<u>Due</u>	<u>Owner</u>
HP #1	1	433	Sept. 20/78	Sept. 20/79	Harry L. Williams
HP #2	1	434	Sept. 20/78	Sept. 20/79	Patrick Crean
HP #3	1	435	Sept. 20/78	Sept. 20/79	Harry L. Williams
HP #4	1	436	Sept. 20/78	Sept. 20/79	Patrick Crean
HP #5	1	509	Jan. 29/79	Jan. 29/80	Harry L. Williams
HP #6	1	510	Jan. 29/79	Jan. 29/80	Patrick Crean

Summary of Work Done

Two hundred and fifteen soil samples were collected from the HP group of claims, and analysed for lead, zinc, copper and molybdenum. The work was done during the period May 9-25, 1979 under the supervision of W.P. Armstrong, P.Eng.

GEOLOGY

The property lies near the centre of the Okanagan batholith, however exposures are limited. The oldest rocks appear to be porphyritic biotite granodiorite, which is easily distinguished by large (2-5 cm) pink orthoclase phenocrysts. Concentrations of phenocrysts are variable and occasional outcrops are found consisting of the medium-grained biotite granodiorite matrix. Other, presumably younger, species include medium-grained leuco-quartz monzonite and fine-grained sucrosic textured alaskite. Molybdenite has been found as coatings along slips and fractures and is predominantly associated with the leuco-quartz monzonite and alaskite. Disseminated molybdenite is rare.

GEOCHEMISTRY

A total of 215 samples were taken at 50 metre intervals along grid lines spaced 75 metres apart.

Sample Collection

Soil samples were collected from the B-horizon, generally 5 to 10 cm beneath the ground surface. All sample locations were marked on the ground by a field number written on pink flagging.

Sample Preparation

Soil samples were oven-dried, sieved and the minus 80 mesh fraction analysed. by Louie

Digestion

Digestion of sample aliquots prior to analyses for molybdenum was accomplished by nitric and perchloric acid. Digestion prior to copper, lead and zinc analyses was by 20% hot HNO_3 .

Analyses


Conventional colourimetric methods were used to establish the concentrations of molybdenum. Atomic absorption was used to determine the concentrations of copper, lead and zinc.

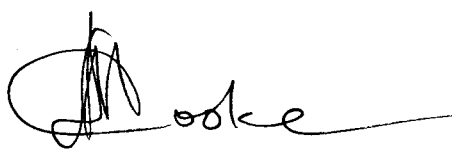
CONCLUSIONS

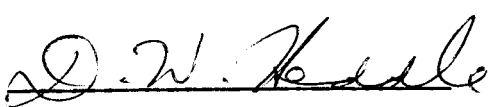
The results of the geochemical survey can best be described as spotty, with no clearly defined anomalous areas or patterns apparent. Perhaps the feature of greatest significance is the area of coincident copper, lead, zinc and molybdenum anomalies centred at 4 south, 4 west. In areal extent, however, the anomaly is quite small. Known occurrences of molybdenite at Line 0 on the baseline, 11 south, 5 west and others, are reflected in small localized anomalies. The geochemical dispersion from these areas of molybdenite mineralization is obviously quite small. Traces of chalcopyrite have been observed in association with molybdenite, but concentrations of economic significance have not been found. No lead or zinc minerals have been observed.

STATISTICAL SUMMARY
STATISTICAL SUMMARY

+NAME+NO.OF +	ARITHMETIC		LOGARITHMIC		Estimated Threshold, ppm
	MEAN	STD.DEV.	MEAN	STD.DEV.	
+CU + 251+	18.932+	28.278+	1.883+	0.356+	50.0
+PB + 251+	19.466+	17.116+	0.815+	0.365+	30.0
+ZN + 251+	214.913+	169.818+	2.281+	0.355+	500.0
+NO + 248+	4.848+	5.343+	0.481+	0.272+	7.0

Report by: 
W.P. Armstrong, P. Eng.

Endorsed by: 
D.L. Cooke
Senior Geologist

Approved by: 
D.W. Heddle
Assistant Manager

COMINCO LTD.

EXPLORATION
NTS: 92H/9E

WESTERN DISTRICT
21 AUGUST 1979

APPENDIX "A"

STATEMENT OF EXPENDITURES
INCURRED IN CONNECTION WITH A GEOCHEMICAL
SURVEY OF THE HP GROUP OF MINERAL CLAIMS
SIMILKAMEEN MINING DIVISION

STAFF SALARIES:

T.E. Collver		
May 9-15, 7 days @ \$99.44/day		\$ 696.08
A. Glatiotis		
May 9-15, 7 days @ \$99.44/day		696.08
K. Schwartz		
May 24, 1 day @ \$74.80/day		74.80
W.P. Armstrong, P. Eng.		
May 10, 11, 24, 25, 4 days @ \$167.20/day		668.80
		<u>\$2,135.76</u>

TRANSPORTATION:

4 wheel drive rental		
8 days @ \$695.60/month		185.50

DOMICILE:

T.E. Collver, A. Glatiotis		
May 9-15 @ \$14.50/day	203.00	
K. Schwartz		
May 24 @ \$14.50/day	14.50	
W.P. Armstrong		
4 days @ \$14.50/day	<u>58.00</u>	275.50

GEOCHEMICAL ANALYSES:

251 soil samples at \$4.55/sample		<u>1,142.05</u>
-----------------------------------	--	-----------------

TOTAL EXPENDITURES:

\$3,738.84

COMINCO LTD.

EXPLORATION
NTS: 92 H/9E

WESTERN DISTRICT
August 20, 1979


APPENDIX "B"

IN THE MATTER OF A GEOCHEMICAL SURVEY
CARRIED OUT ON PORTIONS OF THE HP GROUP OF
CLAIMS LOCATED NEAR OSPREY LAKE
IN THE SIMILKAMEEN MINING DIVISION OF BRITISH COLUMBIA
MORE PARTICULARLY N.T.S. 92 H/9E

A F F I D A V I T

I, W.P. ARMSTRONG, OF THE CITY OF NORTH VANCOUVER, IN THE PROVINCE OF BRITISH COLUMBIA, HEREBY DECLARE:

1. THAT I am employed as a geologist by Cominco Ltd. and, as such, have a personal knowledge of the facts to which I hereinafter depose;
2. THAT annexed hereto and marked as Appendix "A" to this report is a true copy of expenditures incurred in connection with a geochemical survey on the HP group of mineral claims;
3. THAT the said expenditures were incurred between the 9th day of May and the 25th day of May 1979 for the purpose of conducting a geochemical survey.

Signed: 
W.P. Armstrong, P. Eng.

COMINCO LTD.

EXPLORATION
NTS: 92 H/9E

WESTERN DISTRICT
August 20, 1979

APPENDIX "C"

STATEMENT OF QUALIFICATIONS

I, WILLIAM P. ARMSTRONG, OF THE CITY OF NORTH VANCOUVER, IN THE PROVINCE OF BRITISH COLUMBIA, DO HEREBY CERTIFY:

1. THAT I am a geological engineer presently residing at 2766 Crescentview Drive, North Vancouver, B.C., with a business address at 700-409 Granville Street, Vancouver, B.C.;
2. THAT I am a graduate in Geological Engineering with a BAsC in 1965 and a MASc in 1973, both from the University of British Columbia;
3. THAT I am a member in good standing in the Association of Professional Engineers of British Columbia;
4. THAT I have practised my profession continuously since May 1965.

Dated this 27th day of August, 1979
at Vancouver, British Columbia

Signed: _____

W.P. Armstrong
W.P. Armstrong, P.Eng.

APPENDIX "D"

STATISTICAL ANALYSIS OF DATA

OSPREY HP - GROUP GEOCHEM GRID XINT=50M YINT=75M

NUMBER OF VALUES IS 251

VARIABLE NAME IS: CU

CALCULATED PARAMETERS: MEAN= 18.9323 STD.DEV.= 28.2707 VARIANCE= 799.2314 NO.VALUES= 251

+CELL+LOWER LIMIT+	NO+	PCT+PERCENTAGE	HISTOGRAM OF	ARITHMETIC VALUES	+ LOG LIMIT+
1+	-55.2782+	0+	0.0+		*****
2+	-48.2106+	0+	0.0+		*****
3+	-41.1429+	0+	0.0+		*****
4+	-34.0753+	0+	0.0+		*****
5+	-27.0076+	0+	0.0+		*****
6+	-19.9399+	0+	0.0+		*****
7+	-12.8723+	0+	0.0+		*****
8+	-5.8046+	0+	0.0+		*****
9+	1.2631+	0+	0.0+		+ 0.1014+
10+	8.3307+	97+	38.6+*****		+ 0.9207+
11+	15.3984+	75+	29.9+*****		+ 1.1875+
12+	22.4661+	31+	12.4+*****		+ 1.3515+
13+	29.5337+	20+	8.0+*****		+ 1.4703+
14+	36.6014+	4+	1.6+***		+ 1.5635+
15+	43.6691+	7+	2.8+***		+ 1.6402+
16+	50.7368+	2+	0.8+*		+ 1.7053+
17+	57.8044+	1+	0.4+		+ 1.7620+
18+	64.8721+	2+	0.8+*		+ 1.8121+
19+	71.9398+	4+	1.6+***		+ 1.8570+
20+	79.0074+	1+	0.4+		+ 1.8977+
21+	86.0751+	0+	0.0+		+ 1.9349+

LOG VALUES.....: MEAN= 1.0034 STD.DEV.= 0.3557 VARIANCE= 0.1266 NO. VALUES= 251

+CELL+LOWER LIMIT+	NO+	PCT+PERCENTAGE	HISTOGRAM OF	LOGARITHMIC VALUES	+ARITH.LIMIT+
1+	0.1496+	0+	0.0+		+ 1.4112+
2+	0.2385+	0+	0.0+		+ 1.7319+
3+	0.3274+	0+	0.0+		+ 2.1254+
4+	0.4164+	0+	0.0+		+ 2.6034+
5+	0.5053+	5+	2.0+***		+ 3.2012+
6+	0.5943+	0+	0.0+		+ 3.9287+
7+	0.6832+	13+	5.2+*****		+ 4.8216+
8+	0.7721+	16+	6.4+*****		+ 5.9173+
9+	0.8611+	42+	16.7+*****		+ 7.2621+
10+	0.9500+	21+	8.4+*****		+ 8.9124+
11+	1.0389+	31+	12.4+*****		+ 10.9378+
12+	1.1279+	27+	10.8+*****		+ 13.4235+
13+	1.2168+	24+	9.6+*****		+ 16.4741+
14+	1.3057+	17+	6.8+*****		+ 20.2180+
15+	1.3947+	13+	5.2+*****		+ 24.8127+
16+	1.4836+	14+	5.6+*****		+ 30.4516+
17+	1.5725+	4+	1.6+***		+ 37.3719+
18+	1.6615+	7+	2.8+***		+ 45.8650+
19+	1.7504+	3+	1.2+*		+ 56.2882+
20+	1.8394+	3+	1.2+*		+ 69.0801+
21+	1.9283+	4+	1.6+***		+ 84.7791+

OSPREY HP - GROUP GEOCHEM GRID XINT=50M YINT=75M
 VARIABLE NAME IS: CU

+CELL+	LOWER LIMIT+	NO+	CUMPT+	APPROXIMATE CUMULATIVE PROBABILITY PLOT OF LOGARITHMIC VALUES											+ARITH.LIMIT+			
+ 1+	1.951+	7+	2.8+	*	*	*	*	*	*	*	*	*	*	*	89.2324+			
+ 2+	1.906+	0+	2.8+	*	*	*	*	*	*	*	*	*	*	*	80.5480+			
+ 3+	1.862+	0+	2.8+	*	*	*	*	*	*	*	*	*	*	*	72.7080+			
+ 4+	1.817+	5+	4.8+	*	*	*	*	*	*	*	*	*	*	*	65.6325+			
+ 5+	1.773+	2+	5.6+	*	*	*	*	*	*	*	*	*	*	*	59.2449+			
+ 6+	1.728+	0+	5.6+	*	*	*	*	*	*	*	*	*	*	*	53.4790+			
+ 7+	1.684+	1+	6.0+	*	*	*	*	*	*	*	*	*	*	*	48.2742+			
+ 8+	1.639+	2+	6.8+	*	*	*	*	*	*	*	*	*	*	*	43.5760+			
+ 9+	1.595+	6+	9.2+	*	*	*	*	*	*	*	*	*	*	*	39.3350+			
+ 10+	1.550+	3+	10.4+	*	*	*	*	*	*	*	*	*	*	*	35.5060+			
+ 11+	1.506+	2+	11.2+	*	*	*	*	*	*	*	*	*	*	*	32.0511+			
+ 12+	1.461+	4+	12.7+	*	*	*	*	*	*	*	*	*	*	*	28.9318+			
+ 13+	1.417+	6+	15.1+	*	*	*	*	*	*	*	*	*	*	*	26.1161+			
+ 14+	1.372+	4+	16.7+	*	*	*	*	*	*	*	*	*	*	*	23.5743+			
+ 15+	1.328+	10+	20.7+	*	*	*	*	*	*	*	*	*	*	*	21.2800+			
+ 16+	1.284+	5+	22.7+	*	*	*	*	*	*	*	*	*	*	*	19.2090+			
+ 17+	1.239+	10+	26.7+	*	*	*	*	*	*	*	*	*	*	*	17.3395+			
+ 18+	1.195+	12+	31.5+	*	*	*	*	*	*	*	*	*	*	*	15.6519+			
+ 19+	1.150+	7+	34.3+	*	*	*	*	*	*	*	*	*	*	*	14.1296+			
+ 20+	1.106+	21+	42.6+	*	*	*	*	*	*	*	*	*	*	*	12.7536+			
+ 21+	1.061+	9+	46.2+	*	*	*	*	*	*	*	*	*	*	*	11.5124+			
+ 22+	1.017+	7+	49.0+	*	*	*	*	*	*	*	*	*	*	*	10.3919+			
+ 23+	0.972+	16+	55.4+	*	*	*	*	*	*	*	*	*	*	*	9.3806+			
+ 24+	0.928+	15+	61.4+	*	*	*	*	*	*	*	*	*	*	*	8.4676+			
+ 25+	0.883+	21+	69.7+	*	*	*	*	*	*	*	*	*	*	*	7.6435+			
+ 26+	0.839+	20+	77.7+	*	*	*	*	*	*	*	*	*	*	*	6.8996+			
+ 27+	0.794+	0+	77.7+	*	*	*	*	*	*	*	*	*	*	*	6.2281+			
+ 28+	0.750+	22+	86.5+	*	*	*	*	*	*	*	*	*	*	*	5.6220+			
+ 29+	0.705+	0+	86.5+	*	*	*	*	*	*	*	*	*	*	*	5.0740+			
+ 30+	0.661+	16+	92.8+	*	*	*	*	*	*	*	*	*	*	*	4.5809+			
+ 31+	0.616+	0+	92.8+	*	*	*	*	*	*	*	*	*	*	*	4.1351+			
+ 32+	0.572+	13+	98.0+	*	*	*	*	*	*	*	*	*	*	*	3.7327+			
+ 33+	0.528+	0+	98.0+	*	*	*	*	*	*	*	*	*	*	*	3.3694+			
+ 34+	0.483+	0+	98.0+	*	*	*	*	*	*	*	*	*	*	*	3.0415+			
+ 35+	0.439+	5+	100.0+	*	*	*	*	*	*	*	*	*	*	*	2.7455+			
+ 36+	0.394+	0+	100.0+	*	*	*	*	*	*	*	*	*	*	*	2.4783+			
+ 37+	0.350+	0+	100.0+	*	*	*	*	*	*	*	*	*	*	*	2.2371+			
+ 38+	0.305+	0+	100.0+	*	*	*	*	*	*	*	*	*	*	*	2.0194+			
+ 39+	0.261+	0+	100.0+	*	*	*	*	*	*	*	*	*	*	*	1.8228+			
+ 40+	0.216+	0+	100.0+	*	*	*	*	*	*	*	*	*	*	*	1.6454+			
+ 41+	0.172+	0+	100.0+	*	*	*	*	*	*	*	*	*	*	*	1.4853+			

				1	2.5	5	10	20	30	40	50	60	70	80	90	95	97.5	99

7449

OSPREY HP - GROUP GEOCHEM GRID XINT=50M YINT=75M
 VARIABLE NAME IS: CU

+CELL+	LOWER LIMIT+	NO+	CUMPT+	APPROXIMATE CUMULATIVE PROBABILITY PLOT OF ARITHMETIC VALUES												LOG LIMIT+		
+ 1+	87.840+	7+	2.8+	*	*	*	*	*	*	*	*	*	*	*	*	1.9437+		
+ 2+	84.306+	0+	2.8+	*	*	*	*	*	*	*	*	*	*	*	*	1.9259+		
+ 3+	80.772+	0+	2.8+	*	*	*	*	*	*	*	*	*	*	*	*	1.9073+		
+ 4+	77.239+	0+	2.8+	*	*	*	*	*	*	*	*	*	*	*	*	1.8878+		
+ 5+	73.705+	0+	2.8+	*	*	*	*	*	*	*	*	*	*	*	*	1.8675+		
+ 6+	70.171+	3+	4.0+	*	*	*	*	*	*	*	*	*	*	*	*	1.8462+		
+ 7+	66.637+	1+	4.4+	*	*	*	*	*	*	*	*	*	*	*	*	1.8237+		
+ 8+	63.104+	1+	4.8+	*	*	*	*	*	*	*	*	*	*	*	*	1.8001+		
+ 9+	59.570+	2+	5.6+	*	*	*	*	*	*	*	*	*	*	*	*	1.7750+		
+ 10+	56.036+	0+	5.6+	*	*	*	*	*	*	*	*	*	*	*	*	1.7485+		
+ 11+	52.502+	1+	6.0+	*	*	*	*	*	*	*	*	*	*	*	*	1.7202+		
+ 12+	48.968+	0+	6.0+	*	*	*	*	*	*	*	*	*	*	*	*	1.6899+		
+ 13+	45.435+	2+	6.8+	*	*	*	*	*	*	*	*	*	*	*	*	1.6574+		
+ 14+	41.901+	4+	8.4+	*	*	*	*	*	*	*	*	*	*	*	*	1.6222+		
+ 15+	38.367+	2+	9.2+	*	*	*	*	*	*	*	*	*	*	*	*	1.5840+		
+ 16+	34.833+	4+	10.8+	*	*	*	*	*	*	*	*	*	*	*	*	1.5420+		
+ 17+	31.300+	1+	11.2+	*	*	*	*	*	*	*	*	*	*	*	*	1.4955+		
+ 18+	27.766+	8+	14.3+	*	*	*	*	*	*	*	*	*	*	*	*	1.4435+		
+ 19+	24.232+	6+	16.7+	*	*	*	*	*	*	*	*	*	*	*	*	1.3844+		
+ 20+	20.698+	13+	21.9+	*	*	*	*	*	*	*	*	*	*	*	*	1.3159+		
+ 21+	17.164+	12+	26.7+	*	*	*	*	*	*	*	*	*	*	*	*	1.2346+		
+ 22+	13.631+	29+	38.2+	*	*	*	*	*	*	*	*	*	*	*	*	1.1345+		
+ 23+	10.097+	27+	49.0+	*	*	*	*	*	*	*	*	*	*	*	*	1.0042+		
+ 24+	6.563+	72+	77.7+	*	*	*	*	*	*	*	*	*	*	*	*	0.8171+		
+ 25+	3.029+	51+	98.0+	*	*	*	*	*	*	*	*	*	*	*	*	0.4813+		
+ 26+	-0.504+	5+	100.0+	*	*	*	*	*	*	*	*	*	*	*	*	*****		
+ 27+	-4.038+	0+	100.0+	*	*	*	*	*	*	*	*	*	*	*	*	*****		
+ 28+	-7.572+	0+	100.0+	*	*	*	*	*	*	*	*	*	*	*	*	*****		
+ 29+	-11.106+	0+	100.0+	*	*	*	*	*	*	*	*	*	*	*	*	*****		
+ 30+	-14.640+	0+	100.0+	*	*	*	*	*	*	*	*	*	*	*	*	*****		
+ 31+	-18.173+	0+	100.0+	*	*	*	*	*	*	*	*	*	*	*	*	*****		
+ 32+	-21.707+	0+	100.0+	*	*	*	*	*	*	*	*	*	*	*	*	*****		
+ 33+	-25.241+	0+	100.0+	*	*	*	*	*	*	*	*	*	*	*	*	*****		
+ 34+	-28.775+	0+	100.0+	*	*	*	*	*	*	*	*	*	*	*	*	*****		
+ 35+	-32.308+	0+	100.0+	*	*	*	*	*	*	*	*	*	*	*	*	*****		
+ 36+	-35.842+	0+	100.0+	*	*	*	*	*	*	*	*	*	*	*	*	*****		
+ 37+	-39.376+	0+	100.0+	*	*	*	*	*	*	*	*	*	*	*	*	*****		
+ 38+	-42.910+	0+	100.0+	*	*	*	*	*	*	*	*	*	*	*	*	*****		
+ 39+	-46.443+	0+	100.0+	*	*	*	*	*	*	*	*	*	*	*	*	*****		
+ 40+	-49.977+	0+	100.0+	*	*	*	*	*	*	*	*	*	*	*	*	*****		
+ 41+	-53.511+	0+	100.0+	*	*	*	*	*	*	*	*	*	*	*	*	*****		

				1	2.5	5	10	20	30	40	50	60	70	80	90	95	97.5	99

OSPREY HP - GROUP GEOCHEM GRID XINT=50M YINT=75M

NUMBER OF VALUES IS 251

VARIABLE NAME IS: PB

CALCULATED PARAMETERS: MEAN= 10.4661 STD.DEV.= 17.1168 VARIANCE= 292.9856 NO.VALUES= 251

CELL	LOWER LIMIT*	NO*	PCT*	PERCENTAGE HISTOGRAM OF ARITHMETIC VALUES	* LOG LIMIT*
1+	-34.4655+	0+	0.0+		*****
2+	-30.1863+	0+	0.0+		*****
3+	-25.9071+	0+	0.0+		*****
4+	-21.6279+	0+	0.0+		*****
5+	-17.3487+	0+	0.0+		*****
6+	-13.0695+	0+	0.0+		*****
7+	-8.7903+	0+	0.0+		*****
8+	-4.5111+	0+	0.0+		*****
9+	-0.2319+	0+	0.0+		*****
10+	4.0473+	76+	30.3+	*****	+ 0.6072+
11+	8.3265+	100+	39.8+	*****	+ 0.9205+
12+	12.6057+	29+	11.6+	*****	+ 1.1006+
13+	16.8849+	13+	5.2+	*****	+ 1.2275+
14+	21.1641+	14+	5.6+	*****	+ 1.3256+
15+	25.4433+	2+	0.8+	***	+ 1.4056+
16+	29.7225+	3+	1.2+	***	+ 1.4731+
17+	34.0018+	4+	1.6+	***	+ 1.5315+
18+	38.2810+	1+	0.4+		+ 1.5830+
19+	42.5602+	0+	0.0+		+ 1.6290+
20+	46.8394+	2+	0.8+	***	+ 1.6706+
21+	51.1186+	0+	0.0+		+ 1.7086+

LOG VALUES.....: MEAN= 0.8154 STD.DEV.= 0.3652 VARIANCE= 0.1334 NO. VALUES= 251

CELL	LOWER LIMIT*	NO*	PCT*	PERCENTAGE HISTOGRAM OF LOGARITHMIC VALUES	*ARITH.LIMIT*
1+	-0.1432+	0+	0.0+		+ 0.7192+
2+	-0.0519+	0+	0.0+		+ 0.8874+
3+	0.0394+	0+	0.0+		+ 1.0950+
4+	0.1307+	0+	0.0+		+ 1.3512+
5+	0.2220+	0+	0.0+		+ 1.6673+
6+	0.3133+	40+	15.9+	*****	+ 2.0573+
7+	0.4046+	0+	0.0+		+ 2.5306+
8+	0.4959+	0+	0.0+		+ 3.1325+
9+	0.5872+	0+	0.0+		+ 3.8653+
10+	0.6785+	36+	14.3+	*****	+ 4.7696+
11+	0.7698+	42+	16.7+	*****	+ 5.8854+
12+	0.8611+	39+	15.5+	*****	+ 7.2622+
13+	0.9524+	19+	7.6+	*****	+ 8.9611+
14+	1.0437+	24+	9.6+	*****	+ 11.0575+
15+	1.1350+	8+	3.2+	***	+ 13.6444+
16+	1.2262+	10+	4.0+	****	+ 16.8364+
17+	1.3175+	14+	5.6+	*****	+ 20.7751+
18+	1.4088+	2+	0.8+	***	+ 25.6353+
19+	1.5001+	3+	1.2+	***	+ 31.6325+
20+	1.5914+	5+	2.0+	***	+ 39.0327+
21+	1.6827+	2+	0.8+	***	+ 48.1642+

OSPREY HP - GROUP GEOCHEM GRID XINT=50M YINT=75M
 VARIABLE NAME IS: PB

+CELL+	LOWER LIMIT+	NO+	CUMPT+	APPROXIMATE CUMULATIVE PROBABILITY PLOT OF LOGARITHMIC VALUES												+ARITH.LIMIT+
1+	1.706+	7+	2.8+	*	*	*	*	*	*	*	*	*	*	*	*	50.7632+
2+	1.660+	1+	3.2+	**	*	*	*	*	*	*	*	*	*	*	*	45.6984+
3+	1.614+	1+	3.6+	**	*	*	*	*	*	*	*	*	*	*	*	41.1390+
4+	1.569+	0+	3.6+	**	*	*	*	*	*	*	*	*	*	*	*	37.0345+
5+	1.523+	1+	4.0+	**	*	*	*	*	*	*	*	*	*	*	*	33.3394+
6+	1.477+	4+	5.6+	**	*	*	*	*	*	*	*	*	*	*	*	30.0131+
7+	1.432+	2+	6.4+	**	*	*	*	*	*	*	*	*	*	*	*	27.0106+
8+	1.386+	2+	7.2+	**	*	*	*	*	*	*	*	*	*	*	*	24.3229+
9+	1.340+	1+	7.6+	**	*	*	*	*	*	*	*	*	*	*	*	21.8962+
10+	1.295+	2+	8.4+	**	*	*	*	*	*	*	*	*	*	*	*	19.7115+
11+	1.249+	8+	11.6+	**	*	*	*	*	*	*	*	*	*	*	*	17.7449+
12+	1.203+	6+	13.9+	**	*	*	*	*	*	*	*	*	*	*	*	15.9744+
13+	1.158+	3+	15.1+	**	*	*	*	*	*	*	*	*	*	*	*	14.3006+
14+	1.112+	8+	18.3+	**	*	*	*	*	*	*	*	*	*	*	*	12.9458+
15+	1.066+	5+	20.3+	**	*	*	*	*	*	*	*	*	*	*	*	11.6542+
16+	1.021+	5+	22.3+	**	*	*	*	*	*	*	*	*	*	*	*	10.4914+
17+	0.975+	7+	25.1+	**	*	*	*	*	*	*	*	*	*	*	*	9.4447+
18+	0.930+	12+	29.9+	**	*	*	*	*	*	*	*	*	*	*	*	8.5024+
19+	0.884+	19+	37.5+	**	*	*	*	*	*	*	*	*	*	*	*	7.6541+
20+	0.838+	11+	41.8+	**	*	*	*	*	*	*	*	*	*	*	*	6.8904+
21+	0.793+	0+	41.8+	**	*	*	*	*	*	*	*	*	*	*	*	6.2029+
22+	0.747+	28+	53.0+	**	*	*	*	*	*	*	*	*	*	*	*	5.5041+
23+	0.701+	0+	53.0+	**	*	*	*	*	*	*	*	*	*	*	*	5.0269+
24+	0.656+	42+	69.7+	**	*	*	*	*	*	*	*	*	*	*	*	4.5254+
25+	0.610+	0+	69.7+	**	*	*	*	*	*	*	*	*	*	*	*	4.0739+
26+	0.564+	36+	84.1+	**	*	*	*	*	*	*	*	*	*	*	*	3.6674+
27+	0.519+	0+	84.1+	**	*	*	*	*	*	*	*	*	*	*	*	3.3015+
28+	0.473+	0+	84.1+	**	*	*	*	*	*	*	*	*	*	*	*	2.9721+
29+	0.427+	0+	84.1+	**	*	*	*	*	*	*	*	*	*	*	*	2.6756+
30+	0.382+	0+	84.1+	**	*	*	*	*	*	*	*	*	*	*	*	2.4086+
31+	0.336+	0+	84.1+	**	*	*	*	*	*	*	*	*	*	*	*	2.1683+
32+	0.290+	40+	100.0+	**	*	*	*	*	*	*	*	*	*	*	*	1.9520+
33+	0.245+	0+	100.0+	**	*	*	*	*	*	*	*	*	*	*	*	1.7572+
34+	0.199+	0+	100.0+	**	*	*	*	*	*	*	*	*	*	*	*	1.5819+
35+	0.154+	0+	100.0+	**	*	*	*	*	*	*	*	*	*	*	*	1.4241+
36+	0.108+	0+	100.0+	**	*	*	*	*	*	*	*	*	*	*	*	1.2820+
37+	0.062+	0+	100.0+	**	*	*	*	*	*	*	*	*	*	*	*	1.1541+
38+	0.017+	0+	100.0+	**	*	*	*	*	*	*	*	*	*	*	*	1.0390+
39+	-0.029+	0+	100.0+	**	*	*	*	*	*	*	*	*	*	*	*	0.9353+
40+	-0.075+	0+	100.0+	**	*	*	*	*	*	*	*	*	*	*	*	0.8420+
41+	-0.120+	0+	100.0+	**	*	*	*	*	*	*	*	*	*	*	*	0.7530+

1 2.5 5 10 20 30 40 50 60 70 80 90 95 97.5 99

OSPREY HP - GROUP GEOCHEM GRID XINT=50M YINT=75M
 VARIABLE NAME IS: PB

CELL	LOWER LIMIT	NO	CUMPT	APPROXIMATE CUMULATIVE PROBABILITY PLOT OF ARITHMETIC VALUES												LOG LIMIT	
1	52.186	7	2.8	*	*	*	*	*	*	*	*	*	*	*	*	*	1.7176
2	50.047	0	2.8	*	*	*	*	*	*	*	*	*	*	*	*	*	1.6994
3	47.907	0	2.8	*	*	*	*	*	*	*	*	*	*	*	*	*	1.6804
4	45.768	1	3.2	**	*	*	*	*	*	*	*	*	*	*	*	*	1.6606
5	43.628	1	3.6	**	*	*	*	*	*	*	*	*	*	*	*	*	1.6398
6	41.489	0	3.6	**	*	*	*	*	*	*	*	*	*	*	*	*	1.6179
7	39.349	0	3.6	**	*	*	*	*	*	*	*	*	*	*	*	*	1.5949
8	37.210	0	3.6	**	*	*	*	*	*	*	*	*	*	*	*	*	1.5707
9	35.070	1	4.0	**	*	*	*	*	*	*	*	*	*	*	*	*	1.5449
10	32.931	1	4.4	**	*	*	*	*	*	*	*	*	*	*	*	*	1.5176
11	30.791	3	5.6	**	*	*	*	*	*	*	*	*	*	*	*	*	1.4884
12	28.652	1	6.0	**	*	*	*	*	*	*	*	*	*	*	*	*	1.4571
13	26.512	2	6.8	**	*	*	*	*	*	*	*	*	*	*	*	*	1.4234
14	24.373	1	7.2	**	*	*	*	*	*	*	*	*	*	*	*	*	1.3869
15	22.233	0	7.2	**	*	*	*	*	*	*	*	*	*	*	*	*	1.3470
16	20.094	1	7.6	**	*	*	*	*	*	*	*	*	*	*	*	*	1.3031
17	17.954	10	11.6	**	*	*	*	*	*	*	*	*	*	*	*	*	1.2542
18	15.815	6	13.9	**	*	*	*	*	*	*	*	*	*	*	*	*	1.1991
19	13.675	8	17.1	**	*	*	*	*	*	*	*	*	*	*	*	*	1.1359
20	11.536	8	20.3	**	*	*	*	*	*	*	*	*	*	*	*	*	1.0620
21	9.396	12	25.1	**	*	*	*	*	*	*	*	*	*	*	*	*	0.9729
22	7.257	31	37.5	**	*	*	*	*	*	*	*	*	*	*	*	*	0.8607
23	5.117	39	53.0	**	*	*	*	*	*	*	*	*	*	*	*	*	0.7090
24	2.978	78	84.1	**	*	*	*	*	*	*	*	*	*	*	*	*	0.4739
25	0.838	40	100.0	**	*	*	*	*	*	*	*	*	*	*	*	*	-0.0767
26	-1.301	0	100.0	**	*	*	*	*	*	*	*	*	*	*	*	*	*****
27	-3.441	0	100.0	**	*	*	*	*	*	*	*	*	*	*	*	*	*****
28	-5.580	0	100.0	**	*	*	*	*	*	*	*	*	*	*	*	*	*****
29	-7.720	0	100.0	**	*	*	*	*	*	*	*	*	*	*	*	*	*****
30	-9.859	0	100.0	**	*	*	*	*	*	*	*	*	*	*	*	*	*****
31	-11.999	0	100.0	**	*	*	*	*	*	*	*	*	*	*	*	*	*****
32	-14.138	0	100.0	**	*	*	*	*	*	*	*	*	*	*	*	*	*****
33	-16.278	0	100.0	**	*	*	*	*	*	*	*	*	*	*	*	*	*****
34	-18.417	0	100.0	**	*	*	*	*	*	*	*	*	*	*	*	*	*****
35	-20.557	0	100.0	**	*	*	*	*	*	*	*	*	*	*	*	*	*****
36	-22.696	0	100.0	**	*	*	*	*	*	*	*	*	*	*	*	*	*****
37	-24.836	0	100.0	**	*	*	*	*	*	*	*	*	*	*	*	*	*****
38	-26.975	0	100.0	**	*	*	*	*	*	*	*	*	*	*	*	*	*****
39	-29.115	0	100.0	**	*	*	*	*	*	*	*	*	*	*	*	*	*****
40	-31.254	0	100.0	**	*	*	*	*	*	*	*	*	*	*	*	*	*****
41	-33.394	0	100.0	**	*	*	*	*	*	*	*	*	*	*	*	*	*****

1 2.5 5 10 20 30 40 50 60 70 80 90 95 97.5 99

NUMBER OF VALUES IS 251

VARIABLE NAME IS: ZN

CALCULATED PARAMETERS: MEAN= 214.9163 STD.DEV.= 169.8183 VARIANCE= 28838.2461 NO.VALUES= 251

CELL	LOWER LIMIT	NO	PCT	PERCENTAGE HISTOGRAM OF ARITHMETIC VALUES	LOG LIMIT
1+	-230.8568+	0+	0.0+		*****
2+	-188.4023+	0+	0.0+		*****
3+	-145.9477+	0+	0.0+		*****
4+	-103.4931+	0+	0.0+		*****
5+	-61.0386+	0+	0.0+		*****
6+	-18.5840+	0+	0.0+		*****
7+	23.8705+	4+	1.6+++		+ 1.3779+
8+	66.3251+	36+	14.3+*****		+ 1.8217+
9+	108.7797+	44+	17.5+*****		+ 2.0365+
10+	151.2342+	29+	11.6+*****		+ 2.1796+
11+	193.6888+	27+	10.8+*****		+ 2.2871+
12+	236.1433+	22+	8.8+*****		+ 2.3732+
13+	278.5979+	17+	6.8+*****		+ 2.4456+
14+	321.0525+	23+	9.2+*****		+ 2.5066+
15+	363.5071+	9+	3.6+****		+ 2.5605+
16+	405.9617+	11+	4.4+****		+ 2.6085+
17+	448.4163+	7+	2.8+****		+ 2.6517+
18+	490.8708+	3+	1.2++		+ 2.6910+
19+	533.3254+	5+	2.0+++		+ 2.7270+
20+	575.7800+	6+	2.4+++		+ 2.7603+
21+	618.2346+	2+	0.8++		+ 2.7912+

LOG VALUES.....: MEAN= 2.2014 STD.DEV.= 0.3551 VARIANCE= 0.1261 NO. VALUES= 251

CELL	LOWER LIMIT	NO	PCT	PERCENTAGE HISTOGRAM OF LOGARITHMIC VALUES	ARITH. LIMIT
1+	1.2693+	0+	0.0+		+ 18.5904+
2+	1.3581+	3+	1.2++		+ 22.8067+
3+	1.4468+	1+	0.4+		+ 27.9794+
4+	1.5356+	4+	1.6+++		+ 34.3251+
5+	1.6244+	5+	2.0+++		+ 42.1102+
6+	1.7132+	11+	4.4+****		+ 51.6609+
7+	1.8019+	13+	5.2+*****		+ 63.3777+
8+	1.8907+	15+	6.0+*****		+ 77.7519+
9+	1.9795+	17+	6.8+*****		+ 95.3863+
10+	2.0683+	19+	7.6+*****		+ 117.0202+
11+	2.1570+	15+	6.0+*****		+ 143.5605+
12+	2.2458+	26+	10.4+*****		+ 176.1205+
13+	2.3346+	19+	7.6+*****		+ 216.0651+
14+	2.4234+	24+	9.6+*****		+ 265.0691+
15+	2.5121+	29+	11.6+*****		+ 325.1875+
16+	2.6009+	17+	6.8+*****		+ 398.9409+
17+	2.6897+	13+	5.2+*****		+ 489.4214+
18+	2.7785+	12+	4.8+*****		+ 600.4236+
19+	2.8672+	5+	2.0+++		+ 736.6016+
20+	2.9560+	1+	0.4+		+ 903.6648+
21+	3.0448+	0+	0.0+		+ 1103.6174+

OSPREY HP - GROUP GEOCHEM GRID XINT=50M YINT=75M
 VARIABLE NAME IS: ZN

+CELL+LOWER	LIMIT+	NO+CUM	PCT+	APPROXIMATE CUMULATIVE PROBABILITY PLOT OF LOGARITHMIC VALUES											+ARITH.LIMIT+			
1	3.067	1	0.4	+	+	+	+	+	+	+	+	+	+	+	1166.744			
2	3.023	0	0.4	+	+	+	+	+	+	+	+	+	+	+	1053.387			
3	2.978	0	0.4	+	+	+	+	+	+	+	+	+	+	+	951.043			
4	2.934	0	0.4	+	+	+	+	+	+	+	+	+	+	+	858.642			
5	2.889	0	0.4	+	+	+	+	+	+	+	+	+	+	+	775.219			
6	2.845	1	0.8	+	+	+	+	+	+	+	+	+	+	+	699.901			
7	2.801	4	2.4	+	+	+	+	+	+	+	+	+	+	+	631.900			
8	2.756	2	3.2	+	+	+	+	+	+	+	+	+	+	+	570.507			
9	2.712	9	6.8	+	+	+	+	+	+	+	+	+	+	+	515.078			
10	2.667	3	8.0	+	+	+	+	+	+	+	+	+	+	+	465.034			
11	2.623	8	11.2	+	+	+	+	+	+	+	+	+	+	+	419.053			
12	2.579	8	14.3	+	+	+	+	+	+	+	+	+	+	+	379.061			
13	2.534	9	17.9	+	+	+	+	+	+	+	+	+	+	+	342.233			
14	2.490	13	23.1	+	+	+	+	+	+	+	+	+	+	+	308.982			
15	2.446	14	28.7	+	+	+	+	+	+	+	+	+	+	+	278.962			
16	2.401	11	33.1	+	+	+	+	+	+	+	+	+	+	+	251.859			
17	2.357	12	37.8	+	+	+	+	+	+	+	+	+	+	+	227.389			
18	2.312	13	43.0	+	+	+	+	+	+	+	+	+	+	+	205.297			
19	2.268	6	45.4	+	+	+	+	+	+	+	+	+	+	+	185.351			
20	2.224	12	50.2	+	+	+	+	+	+	+	+	+	+	+	167.343			
21	2.179	12	55.0	+	+	+	+	+	+	+	+	+	+	+	151.034			
22	2.135	13	60.2	+	+	+	+	+	+	+	+	+	+	+	136.405			
23	2.090	10	64.1	+	+	+	+	+	+	+	+	+	+	+	123.152			
24	2.046	5	66.1	+	+	+	+	+	+	+	+	+	+	+	111.137			
25	2.002	6	68.5	+	+	+	+	+	+	+	+	+	+	+	100.304			
26	1.957	18	75.7	+	+	+	+	+	+	+	+	+	+	+	90.631			
27	1.913	5	77.7	+	+	+	+	+	+	+	+	+	+	+	81.826			
28	1.869	7	80.5	+	+	+	+	+	+	+	+	+	+	+	73.876			
29	1.824	9	84.1	+	+	+	+	+	+	+	+	+	+	+	66.698			
30	1.780	5	86.1	+	+	+	+	+	+	+	+	+	+	+	60.218			
31	1.735	9	89.6	+	+	+	+	+	+	+	+	+	+	+	54.367			
32	1.691	3	90.8	+	+	+	+	+	+	+	+	+	+	+	49.035			
33	1.647	7	93.6	+	+	+	+	+	+	+	+	+	+	+	44.316			
34	1.602	2	94.4	+	+	+	+	+	+	+	+	+	+	+	40.010			
35	1.558	3	95.6	+	+	+	+	+	+	+	+	+	+	+	36.123			
36	1.513	3	96.8	+	+	+	+	+	+	+	+	+	+	+	32.613			
37	1.469	2	97.6	+	+	+	+	+	+	+	+	+	+	+	29.445			
38	1.425	1	98.0	+	+	+	+	+	+	+	+	+	+	+	26.504			
39	1.380	0	98.0	+	+	+	+	+	+	+	+	+	+	+	24.001			
40	1.336	2	98.8	+	+	+	+	+	+	+	+	+	+	+	21.669			
41	1.291	2	99.6	+	+	+	+	+	+	+	+	+	+	+	19.564			

				1	2.5	5	10	20	30	40	50	60	70	80	90	95	97.5	99

OSPREY HP - GROUP GEOCHEM GRID XINT=50N YINT=75M
 VARIABLE NAME IS: ZN

APPROXIMATE CUMULATIVE PROBABILITY PLOT OF ARITHMETIC VALUES																	
CELL	LOWER LIMIT	NO	CUMPT														LOG LIMIT
1	628.844	6	2.4	1	1	1	1	1	1	1	1	1	1	1	1	2.7985	
2	607.617	0	2.4	1	1	1	1	1	1	1	1	1	1	1	1	2.7836	
3	586.389	2	3.2	1	1	1	1	1	1	1	1	1	1	1	1	2.7682	
4	565.162	3	4.4	1	1	1	1	1	1	1	1	1	1	1	1	2.7522	
5	543.935	2	5.2	1	1	1	1	1	1	1	1	1	1	1	1	2.7355	
6	522.708	3	6.4	1	1	1	1	1	1	1	1	1	1	1	1	2.7183	
7	501.480	3	7.6	1	1	1	1	1	1	1	1	1	1	1	1	2.7003	
8	480.253	0	7.6	1	1	1	1	1	1	1	1	1	1	1	1	2.6815	
9	459.026	2	8.4	1	1	1	1	1	1	1	1	1	1	1	1	2.6618	
10	437.798	6	10.8	1	1	1	1	1	1	1	1	1	1	1	1	2.6413	
11	416.571	1	11.2	1	1	1	1	1	1	1	1	1	1	1	1	2.6197	
12	395.344	4	12.7	1	1	1	1	1	1	1	1	1	1	1	1	2.5979	
13	374.116	4	14.3	1	1	1	1	1	1	1	1	1	1	1	1	2.5730	
14	352.889	6	16.7	1	1	1	1	1	1	1	1	1	1	1	1	2.5476	
15	331.662	4	18.3	1	1	1	1	1	1	1	1	1	1	1	1	2.5207	
16	310.435	9	21.9	1	1	1	1	1	1	1	1	1	1	1	1	2.4920	
17	289.207	12	26.7	1	1	1	1	1	1	1	1	1	1	1	1	2.4612	
18	267.980	11	31.1	1	1	1	1	1	1	1	1	1	1	1	1	2.4281	
19	246.753	6	33.5	1	1	1	1	1	1	1	1	1	1	1	1	2.3923	
20	225.525	12	38.2	1	1	1	1	1	1	1	1	1	1	1	1	2.3532	
21	204.298	12	43.0	1	1	1	1	1	1	1	1	1	1	1	1	2.3103	
22	183.071	7	45.8	1	1	1	1	1	1	1	1	1	1	1	1	2.2626	
23	161.844	19	53.4	1	1	1	1	1	1	1	1	1	1	1	1	2.2091	
24	140.616	15	59.4	1	1	1	1	1	1	1	1	1	1	1	1	2.1486	
25	119.389	13	64.5	1	1	1	1	1	1	1	1	1	1	1	1	2.0770	
26	98.162	13	69.7	1	1	1	1	1	1	1	1	1	1	1	1	1.9919	
27	76.935	24	79.3	1	1	1	1	1	1	1	1	1	1	1	1	1.8861	
28	55.707	23	88.4	1	1	1	1	1	1	1	1	1	1	1	1	1.7459	
29	34.480	20	96.4	1	1	1	1	1	1	1	1	1	1	1	1	1.5376	
30	13.253	9	100.0	1	1	1	1	1	1	1	1	1	1	1	1	1.1223	
31	-7.974	0	100.0	1	1	1	1	1	1	1	1	1	1	1	1	*****	
32	-29.202	0	100.0	1	1	1	1	1	1	1	1	1	1	1	1	*****	
33	-50.429	0	100.0	1	1	1	1	1	1	1	1	1	1	1	1	*****	
34	-71.656	0	100.0	1	1	1	1	1	1	1	1	1	1	1	1	*****	
35	-92.883	0	100.0	1	1	1	1	1	1	1	1	1	1	1	1	*****	
36	-114.111	0	100.0	1	1	1	1	1	1	1	1	1	1	1	1	*****	
37	-135.338	0	100.0	1	1	1	1	1	1	1	1	1	1	1	1	*****	
38	-156.565	0	100.0	1	1	1	1	1	1	1	1	1	1	1	1	*****	
39	-177.792	0	100.0	1	1	1	1	1	1	1	1	1	1	1	1	*****	
40	-199.020	0	100.0	1	1	1	1	1	1	1	1	1	1	1	1	*****	
41	-220.247	0	100.0	1	1	1	1	1	1	1	1	1	1	1	1	*****	

1 2.5 5 10 20 30 40 50 60 70 80 90 95 97.5 99

NUMBER OF VALUES IS 248

VARIABLE NAME IS: NO

CALCULATED PARAMETERS: MEAN= 4.0484 STD.DEV.= 5.3431 VARIANCE= 28.5482 NO.VALUES= 248

+CELL+LOWER LIMIT+ NO+ PCT+PERCENTAGE HISTOGRAM OF

ARITHMETIC VALUES

+ LOG LIMIT

1+	-9.9771+	0+	0.0+	*****	+ -0.1494+
2+	-8.6414+	0+	0.0+	*****	+ 0.3166+
3+	-7.3056+	0+	0.0+	*****	+ 0.5296+
4+	-5.9698+	0+	0.0+	*****	+ 0.6736+
5+	-4.6341+	0+	0.0+	*****	+ 0.7819+
6+	-3.2983+	0+	0.0+	*****	+ 0.8685+
7+	-1.9626+	0+	0.0+	*****	+ 0.9467+
8+	-0.6268+	0+	0.0+	*****	+ 1.0026+
9+	0.7090+	0+	0.0+	*****	+ 1.0567+
10+	2.0447+	138+	55.6+	*****	+ 1.1049+
11+	3.3805+	43+	17.3+	*****	+ 1.1482+
12+	4.7163+	17+	6.9+	*****	+ 1.1876+
13+	6.0520+	21+	8.5+	*****	+ 1.2237+
14+	7.3878+	2+	0.8+	*****	
15+	8.7236+	3+	1.2+	*****	
16+	10.0593+	7+	2.8+	*****	
17+	11.3951+	0+	0.0+	*****	
18+	12.7309+	2+	0.8+	*****	
19+	14.0666+	4+	1.6+	*****	
20+	15.4024+	4+	1.6+	*****	
21+	16.7381+	0+	0.0+	*****	

LOG VALUES.....: MEAN= 0.4814 STD.DEV.= 0.2723 VARIANCE= 0.0741 NO. VALUES= 248

+CELL+LOWER LIMIT+ NO+ PCT+PERCENTAGE HISTOGRAM OF

LOGARITHMIC VALUES

+ ARITH.LIMIT

1+	-0.2333+	0+	0.0+	*****	+ 0.5844+
2+	-0.1652+	0+	0.0+	*****	+ 0.6836+
3+	-0.0971+	0+	0.0+	*****	+ 0.7996+
4+	-0.0291+	0+	0.0+	*****	+ 0.9352+
5+	0.0390+	0+	0.0+	*****	+ 1.0939+
6+	0.1070+	0+	0.0+	*****	+ 1.2795+
7+	0.1751+	0+	0.0+	*****	+ 1.4966+
8+	0.2432+	0+	0.0+	*****	+ 1.7505+
9+	0.3112+	138+	55.6+	*****	+ 2.0475+
10+	0.3793+	0+	0.0+	*****	+ 2.3949+
11+	0.4474+	0+	0.0+	*****	+ 2.8013+
12+	0.5154+	43+	17.3+	*****	+ 3.2765+
13+	0.5835+	0+	0.0+	*****	+ 3.8325+
14+	0.6515+	17+	6.9+	*****	+ 4.4827+
15+	0.7196+	16+	6.5+	*****	+ 5.2433+
16+	0.7877+	5+	2.0+	*****	+ 6.1329+
17+	0.8557+	2+	0.8+	*****	+ 7.1735+
18+	0.9238+	3+	1.2+	*****	+ 8.3906+
19+	0.9919+	5+	2.0+	*****	+ 9.8142+
20+	1.0599+	2+	0.8+	*****	+ 11.4794+
21+	1.1280+	5+	2.0+	*****	+ 13.4271+

OSPREY HP - GROUP GEOCHEM GRID XINT=50M YINT=75M
 VARIABLE NAME IS: MO

CELL	LOWER	LIMIT	NO	CUM	PCT	APPROXIMATE CUMULATIVE PROBABILITY PLOT OF LOGARITHMIC VALUES												ARITH.	LIMIT	
1	1.145	12	4.8														13.9636			
2	1.111	3	6.8														12.9111			
3	1.077	2	6.9														11.9389			
4	1.043	0	6.9														11.0383			
5	1.009	0	6.9														10.2063			
6	0.975	2	7.7														9.4371			
7	0.941	5	9.7														8.7258			
8	0.907	0	9.7														8.0682			
9	0.873	3	10.9														7.4601			
10	0.839	2	11.7														6.8978			
11	0.805	0	11.7														6.3779			
12	0.771	5	13.7														5.8972			
13	0.737	0	13.7														5.4528			
14	0.703	0	13.7														5.0418			
15	0.669	16	20.2														4.6618			
16	0.635	0	20.2														4.3105			
17	0.600	17	27.0														3.9356			
18	0.566	0	27.0														3.6052			
19	0.532	0	27.0														3.4074			
20	0.498	0	27.0														3.1506			
21	0.464	43	44.4														2.9132			
22	0.430	0	44.4														2.6936			
23	0.396	0	44.4														2.4906			
24	0.362	0	44.4														2.3029			
25	0.328	0	44.4														2.1293			
26	0.294	138	100.0														1.9680			
27	0.260	0	100.0														1.8204			
28	0.226	0	100.0														1.6832			
29	0.192	0	100.0														1.5564			
30	0.158	0	100.0														1.4391			
31	0.124	0	100.0														1.3306			
32	0.090	0	100.0														1.2303			
33	0.056	0	100.0														1.1376			
34	0.022	0	100.0														1.0519			
35	-0.012	0	100.0														0.9726			
36	-0.046	0	100.0														0.8993			
37	-0.080	0	100.0														0.8315			
38	-0.114	0	100.0														0.7688			
39	-0.148	0	100.0														0.7109			
40	-0.182	0	100.0														0.6573			
41	-0.216	0	100.0														0.6078			

						1	2.5	5	10	20	30	40	50	60	70	80	90	95	97.5	99

OSPREY HP - GROUP GEOCHEM GRID XINT=50M YINT=75M
 VARIABLE NAME IS: MO

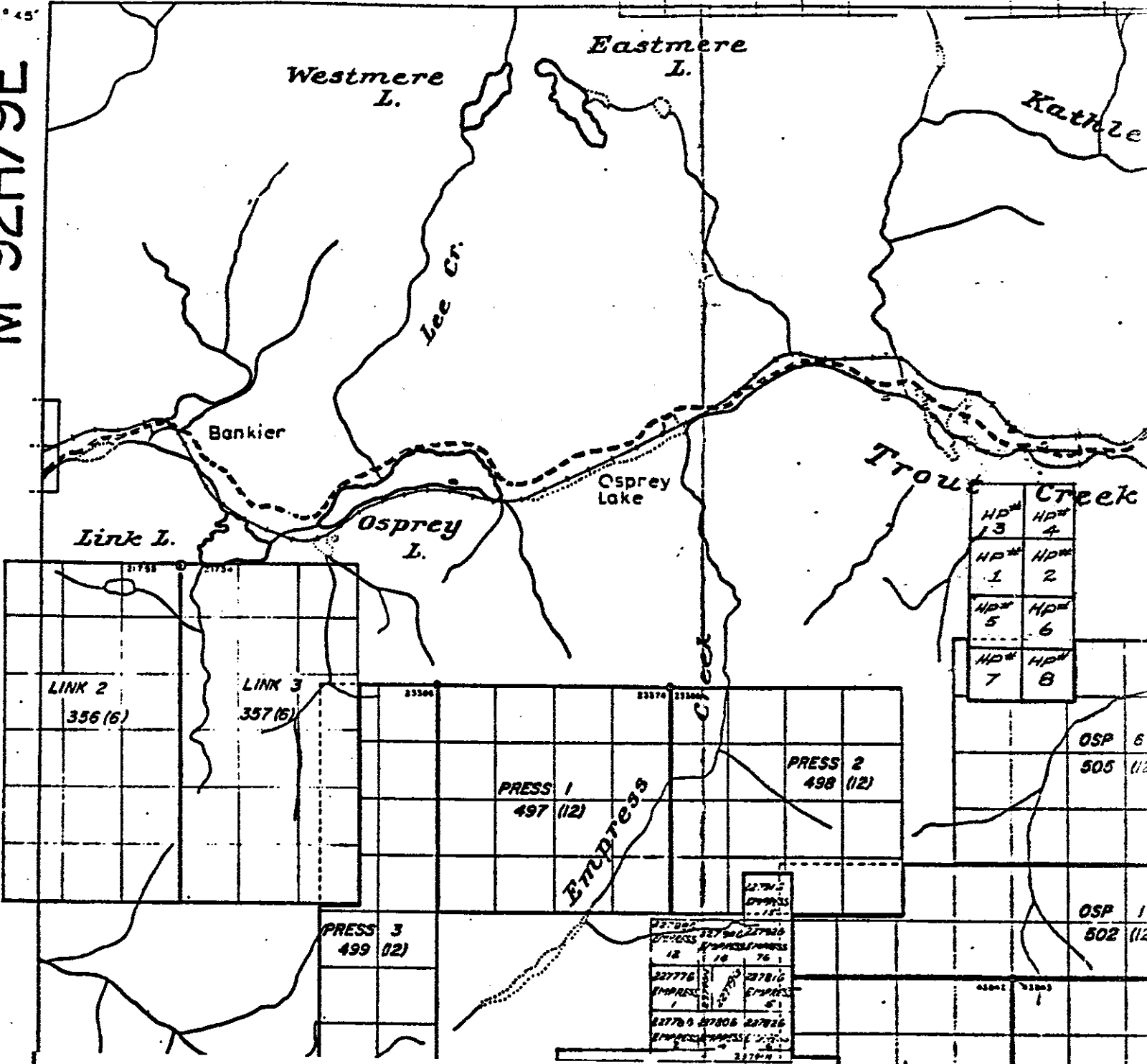
CELL	LOWER LIMIT	NO	CUM PCT	APPROXIMATE CUMULATIVE PROBABILITY PLOT OF ARITHMETIC VALUES												LOG LIMIT		
1	17.872	6	2.4	*	*	*	*	*	*	*	*	*	*	*	*	1.2323		
2	16.484	1	2.8	*	*	*	*	*	*	*	*	*	*	*	*	1.2150		
3	15.736	0	2.8	*	*	*	*	*	*	*	*	*	*	*	*	1.1969		
4	15.068	0	2.8	*	*	*	*	*	*	*	*	*	*	*	*	1.1781		
5	14.480	4	4.4	*	*	*	*	*	*	*	*	*	*	*	*	1.1584		
6	13.733	1	4.8	*	*	*	*	*	*	*	*	*	*	*	*	1.1378		
7	13.065	0	4.8	*	*	*	*	*	*	*	*	*	*	*	*	1.1161		
8	12.397	3	6.0	*	*	*	*	*	*	*	*	*	*	*	*	1.0933		
9	11.729	2	6.9	*	*	*	*	*	*	*	*	*	*	*	*	1.0693		
10	11.061	0	6.9	*	*	*	*	*	*	*	*	*	*	*	*	1.0438		
11	10.393	0	6.9	*	*	*	*	*	*	*	*	*	*	*	*	1.0167		
12	9.725	2	7.7	*	*	*	*	*	*	*	*	*	*	*	*	0.9979		
13	9.057	0	7.7	*	*	*	*	*	*	*	*	*	*	*	*	0.9770		
14	8.390	5	9.7	*	*	*	*	*	*	*	*	*	*	*	*	0.9237		
15	7.722	3	10.9	*	*	*	*	*	*	*	*	*	*	*	*	0.8877		
16	7.054	0	10.9	*	*	*	*	*	*	*	*	*	*	*	*	0.8484		
17	6.386	2	11.7	*	*	*	*	*	*	*	*	*	*	*	*	0.8052		
18	5.718	5	13.7	*	*	*	*	*	*	*	*	*	*	*	*	0.7572		
19	5.050	0	13.7	*	*	*	*	*	*	*	*	*	*	*	*	0.7033		
20	4.382	16	20.2	*	*	*	*	*	*	*	*	*	*	*	*	0.6417		
21	3.714	17	27.0	*	*	*	*	*	*	*	*	*	*	*	*	0.5699		
22	3.046	0	27.0	*	*	*	*	*	*	*	*	*	*	*	*	0.4838		
23	2.379	43	44.4	*	*	*	*	*	*	*	*	*	*	*	*	0.3763		
24	1.711	138	100.0	*	*	*	*	*	*	*	*	*	*	*	*	0.2332		
25	1.043	0	100.0	*	*	*	*	*	*	*	*	*	*	*	*	0.0182		
26	0.375	0	100.0	*	*	*	*	*	*	*	*	*	*	*	*	-0.4260		
27	-0.293	0	100.0	*	*	*	*	*	*	*	*	*	*	*	*	*****		
28	-0.961	0	100.0	*	*	*	*	*	*	*	*	*	*	*	*	*****		
29	-1.629	0	100.0	*	*	*	*	*	*	*	*	*	*	*	*	*****		
30	-2.297	0	100.0	*	*	*	*	*	*	*	*	*	*	*	*	*****		
31	-2.964	0	100.0	*	*	*	*	*	*	*	*	*	*	*	*	*****		
32	-3.632	0	100.0	*	*	*	*	*	*	*	*	*	*	*	*	*****		
33	-4.300	0	100.0	*	*	*	*	*	*	*	*	*	*	*	*	*****		
34	-4.968	0	100.0	*	*	*	*	*	*	*	*	*	*	*	*	*****		
35	-5.636	0	100.0	*	*	*	*	*	*	*	*	*	*	*	*	*****		
36	-6.304	0	100.0	*	*	*	*	*	*	*	*	*	*	*	*	*****		
37	-6.972	0	100.0	*	*	*	*	*	*	*	*	*	*	*	*	*****		
38	-7.640	0	100.0	*	*	*	*	*	*	*	*	*	*	*	*	*****		
39	-8.307	0	100.0	*	*	*	*	*	*	*	*	*	*	*	*	*****		
40	-8.975	0	100.0	*	*	*	*	*	*	*	*	*	*	*	*	*****		
41	-9.643	0	100.0	*	*	*	*	*	*	*	*	*	*	*	*	*****		

				1	2.5	5	10	20	30	40	50	60	70	80	90	95	97.5	99

120°15'

59°45'

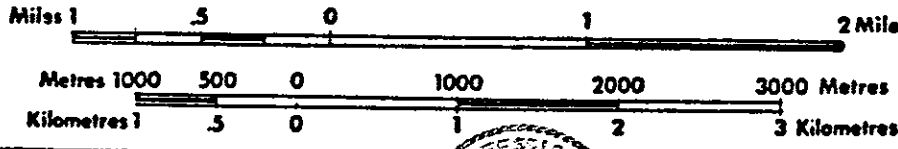
M 92H/9E



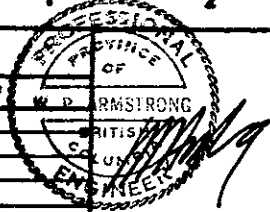
HP# 13	HP# 4
HP# 1	HP# 2
HP# 5	HP# 6
HP# 7	HP# 8

OSP 6
505 (12)
OSP 1
502 (12)

22776	22777	22778
22779	22780	22781
22782	22783	22784
22785	22786	22787

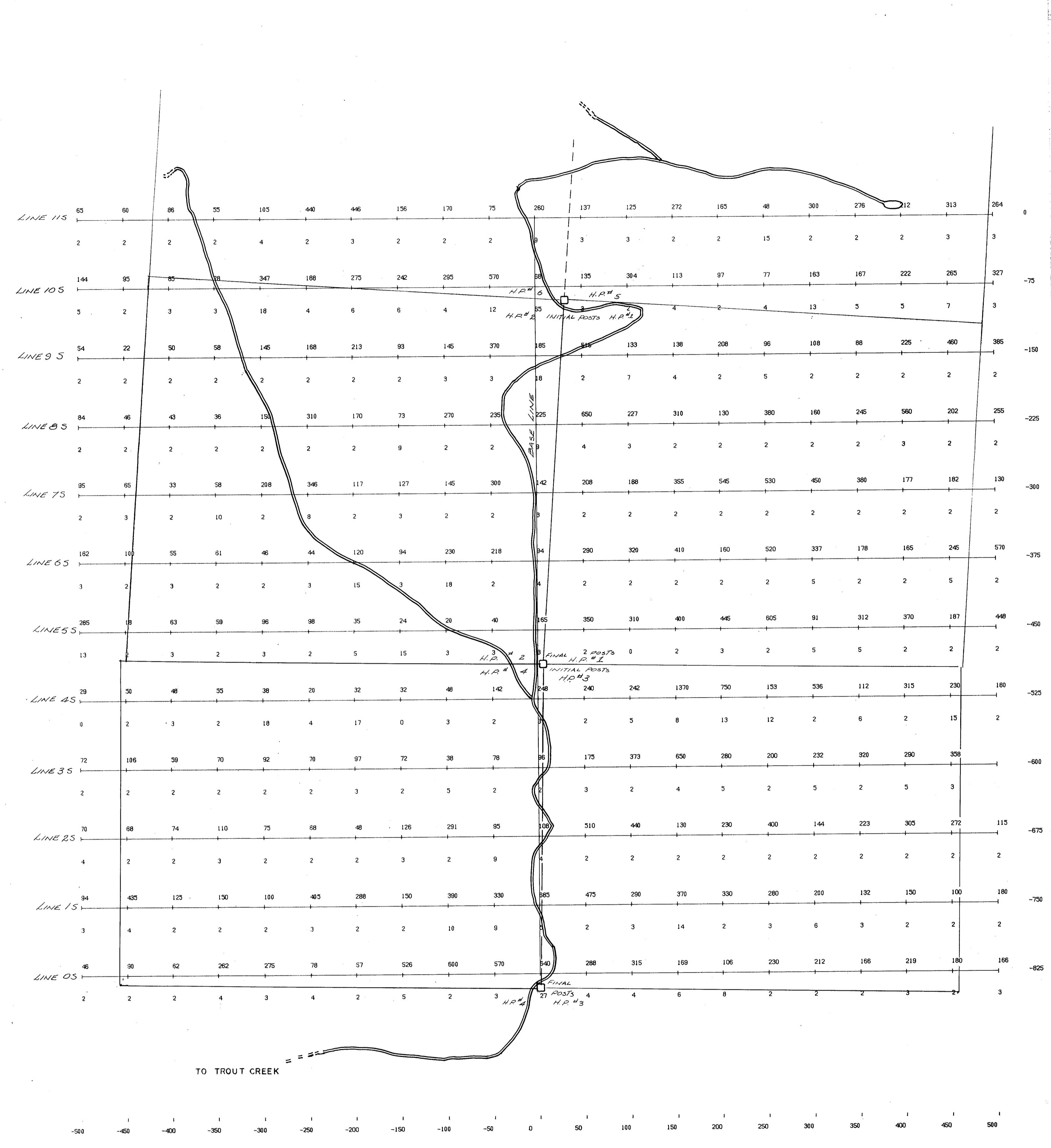
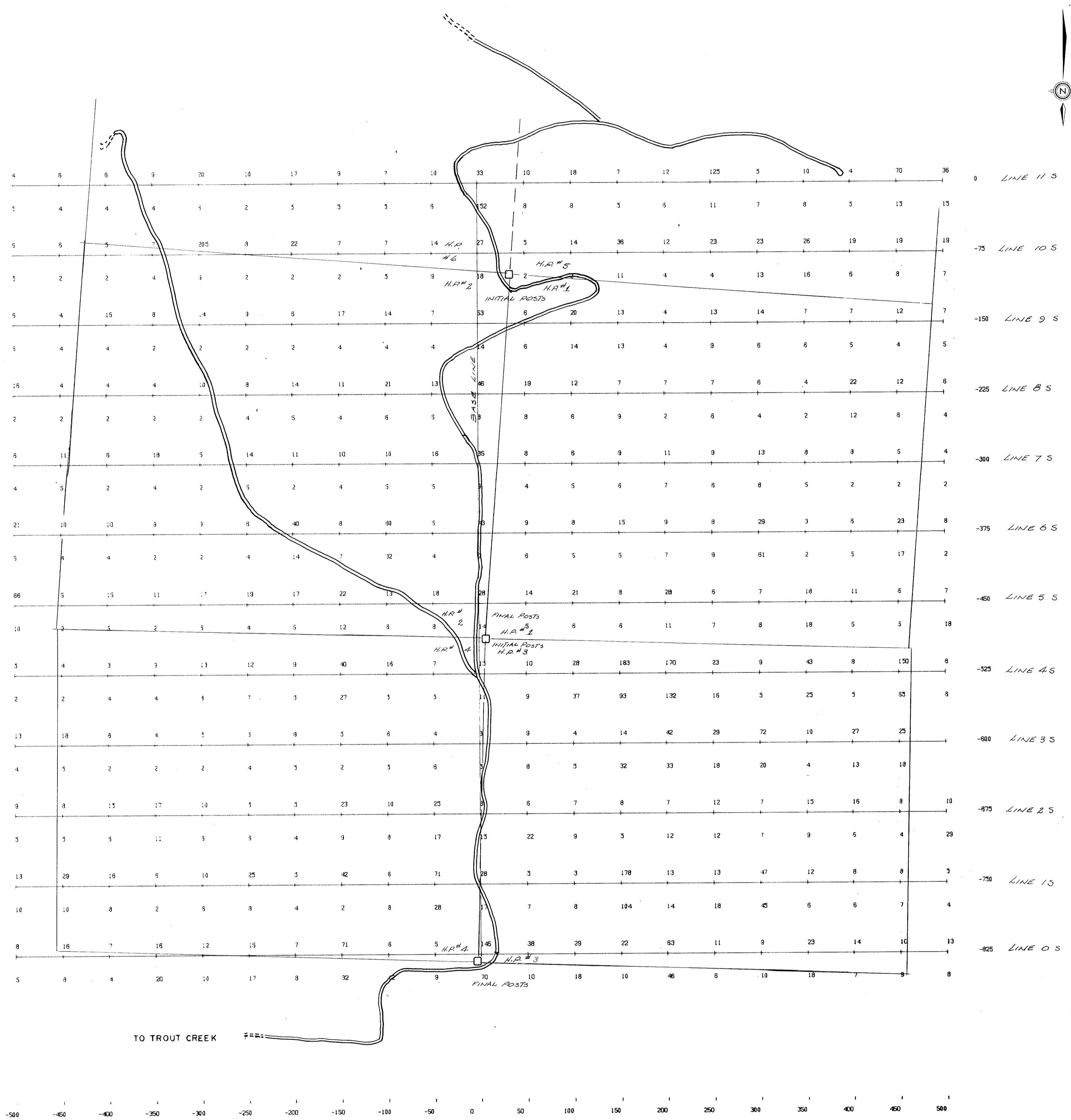


Drawn by:	WPA	Traced by:	
Revised by:	Dz	Revised by:	
		Date:	

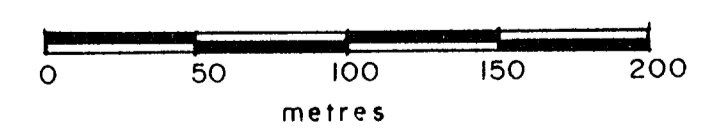


LOCATION SKETCH
H.P. GROUP 7449

Scale: 1: 50 000 Date: AUGUST, 1975 Plate: 1



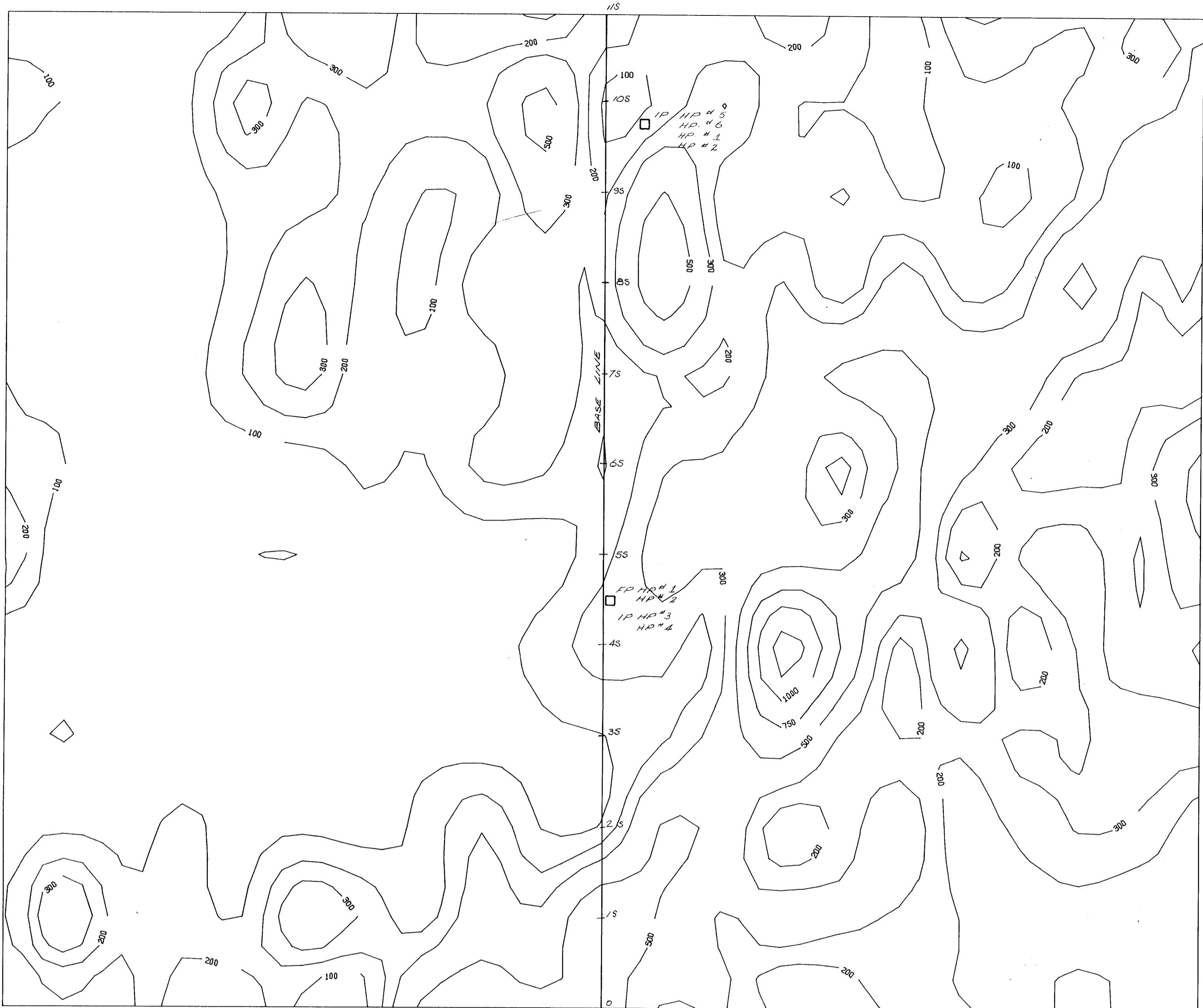
7449
NO.



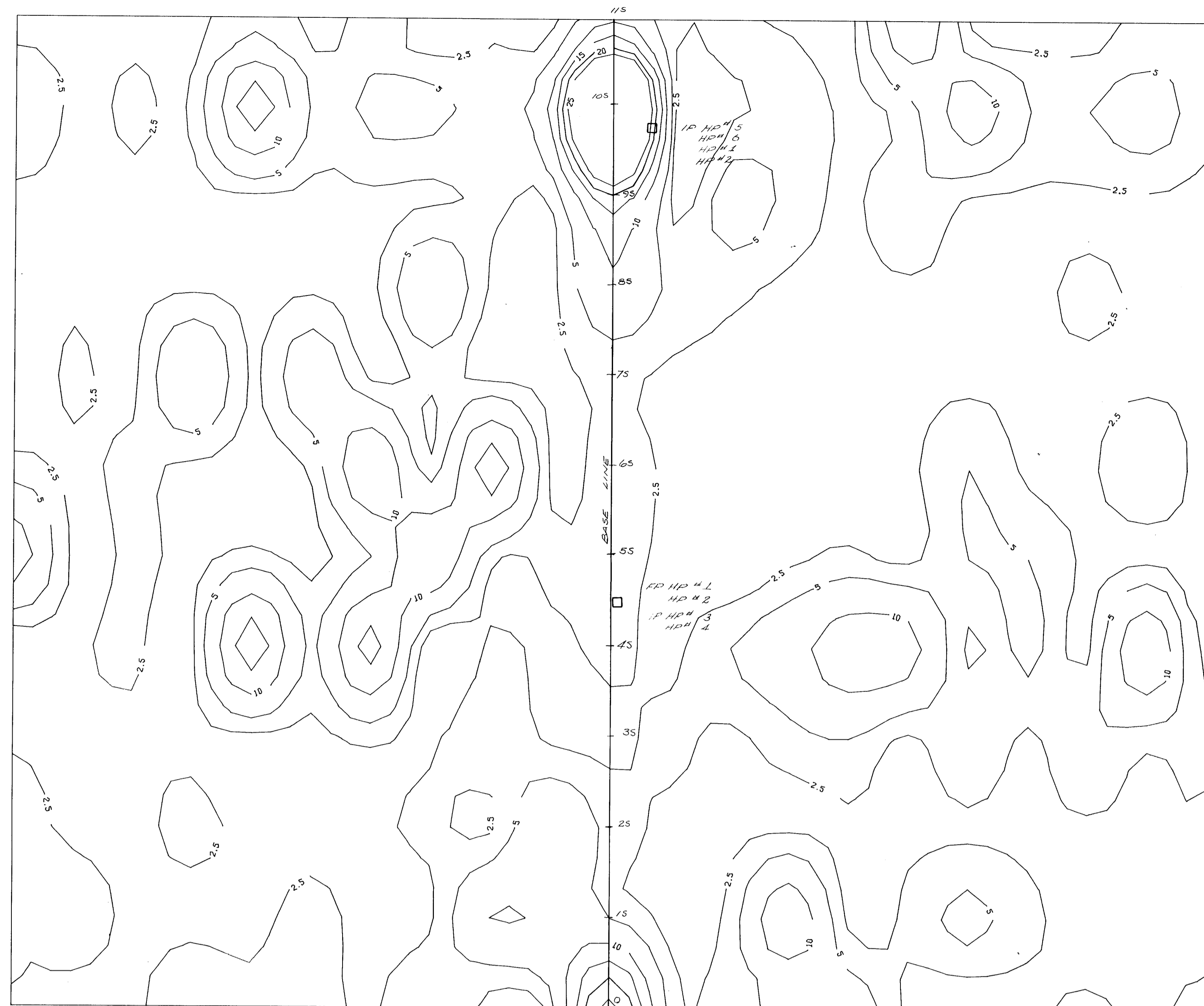
CLAIM POSTS LOCATED BY
CHAIN AND COMPASS.

W P ARMSTRONG P ENG

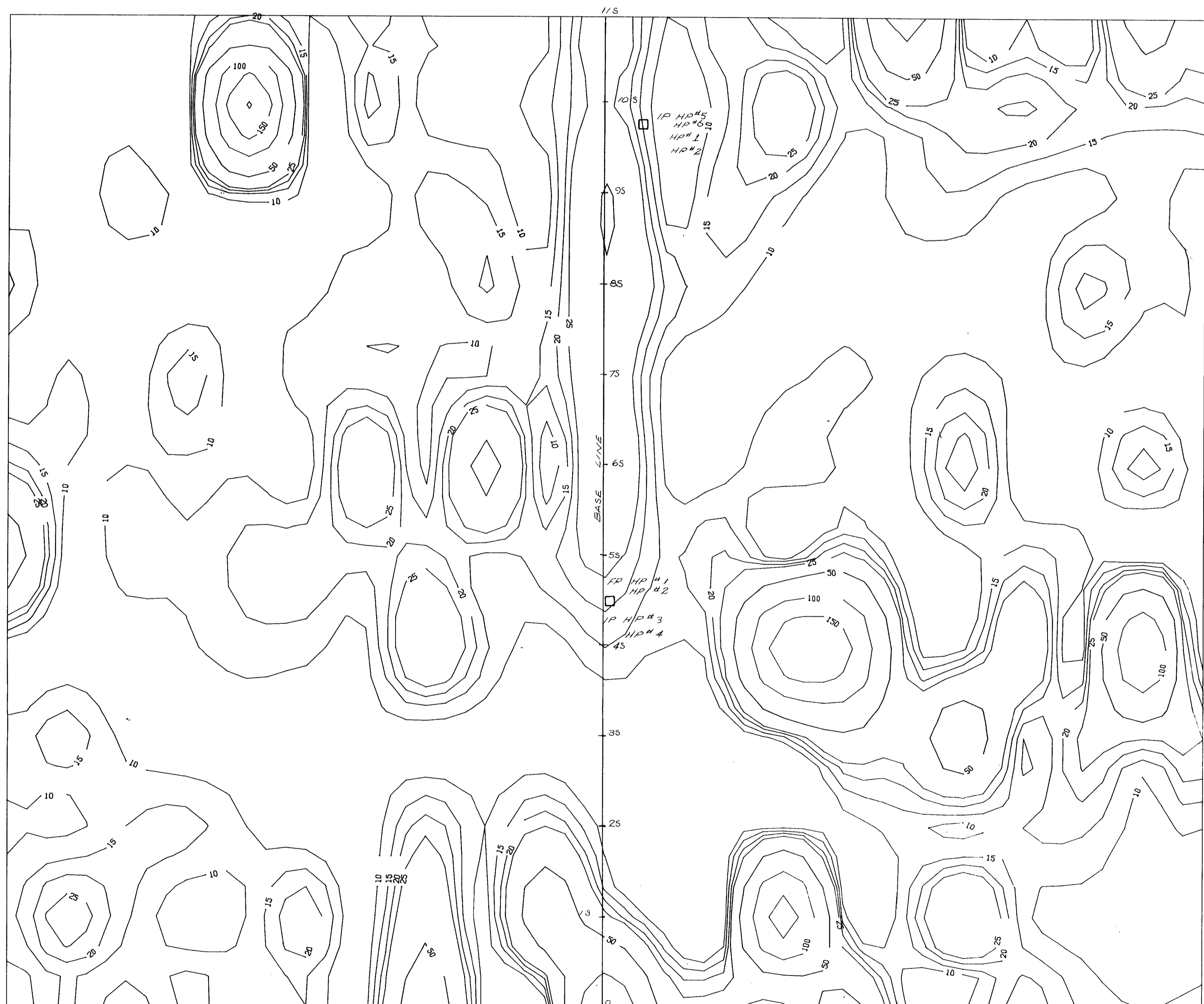
HP CLAIM GROUP		92H9	
Drawn by: WPA	Traced by:	SOIL GEOCHEMISTRY (PPM)	
Revised by: Date	Revised by: Date	Scale: 1:2500	Date: 10/08/79
			Plate: 2



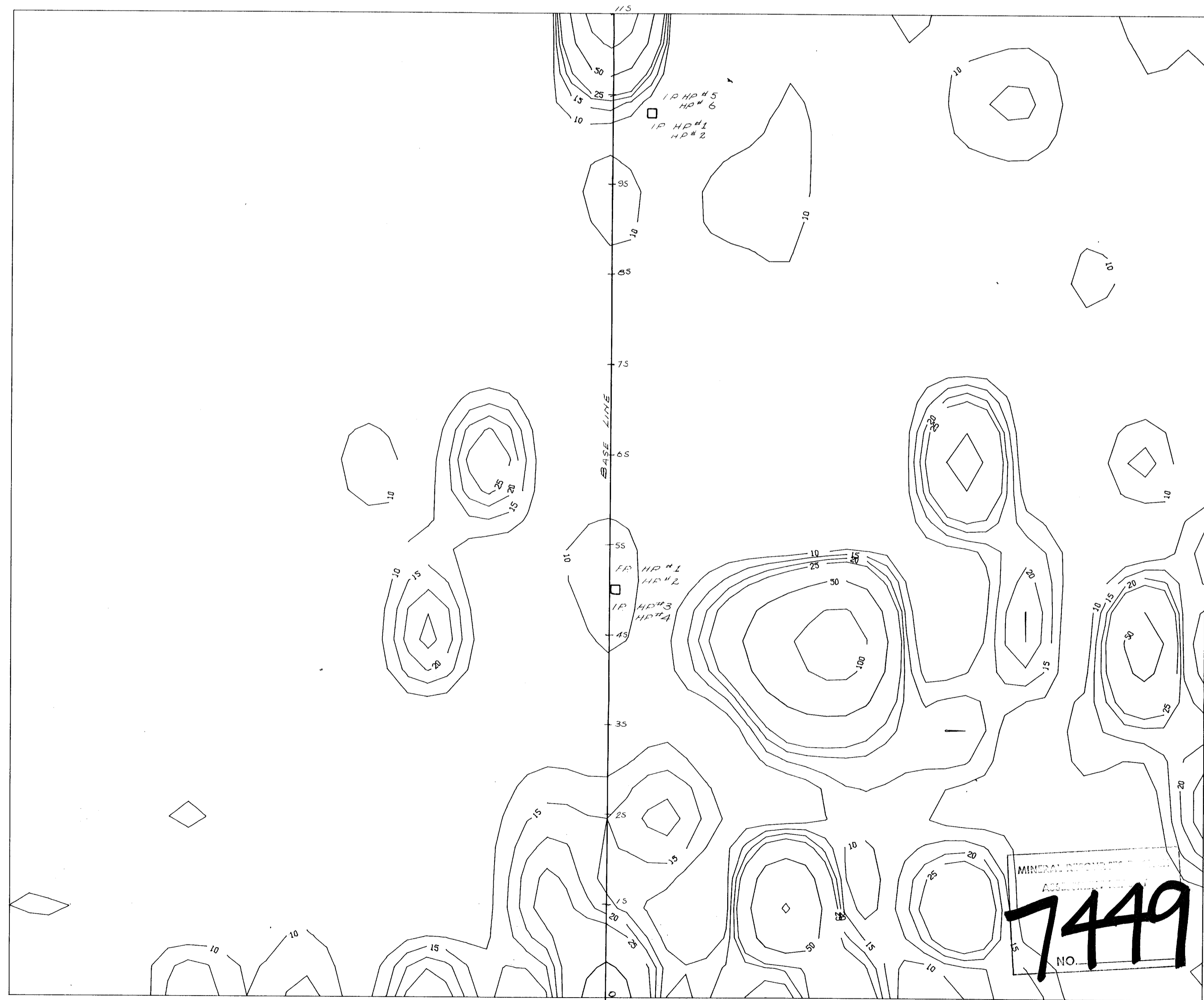
OSPREY LAKE SCALE 1:2500 ZN



OSPREY LAKE SCALE 1:2500 MO



OSPREY LAKE SCALE 1:2500 CU



OSPREY LAKE SCALE 1:2500 PB



CLAIM POSTS LOCATED BY CHAIN AND COMPASS.

WP ARMSTRONG P ENG

HP CLAIM GROUP		92H9
Drawn by: WPA	Traced by:	
Revised by: _____	Date: _____	Revised by: _____
_____	_____	_____
CONTOURED INTERPRETATION SOIL GEOCHEMISTRY (ppm)		Scale: 1:2500
Date: 10 / 08 / 79		Plate: 3