

79-#369-# 7465

SHELL CANADA RESOURCES LIMITED
RED CLAIM ASSESSMENT REPORT
GEOLOGICAL MAPPING AND PROSPECTING
104-P-4/5, LIARD MINING DISTRICT, B.C.

MINERAL RESOURCES BRANCH ASSESSMENT REPORT 7465 NO. _____

Submitted by C. J. C. Bloomer
July 26, 1979

Table of Contents

	<u>Page</u>
Introduction	1
Property	1
Location and Access	1
Work Completed	1
Geology	2
Results and Recommendations	2
Appendix I: Author's Qualifications	(In Back)
Appendix II: Expenditures	(In Back)

List of Figures

- Figure 1: 1:25,000 Geological Compilation and Location Map (In Back)
- Figure 2: 1:5,000 Topographic and Geological Map of the Red Claim (In Back)

Introduction

The Red Claim consists of four units currently held under option by Shell Canada Resources Limited from W. J. Storie of Cassiar, British Columbia.

As part of a preliminary exploration programme Shell Canada Resources Limited carried out detailed geological mapping and prospecting over the Red Claim. The purpose of the programme was to locate any sulphide showings within the Devonian-Mississippian volcanic rocks of the Sylvester Group that underlay the Red Claim, and to examine areas of vein quartz for possible gold mineralization.

Property

The Red Claim consists of four units owned by W. J. Storie of Cassiar, British Columbia. Shell Canada Resources Limited of Calgary, Alberta currently hold an option agreement with W. J. Storie for the Red Claim.

The valuation of work applied for in this report is for a period of one year for all of the four units of the Red Claim.

Location and Access

The Red Claim is located in the Liard Mining District of British Columbia approximately eight kilometres southwest of the junction of the Cassiar-Stewart highway (B. C. Hwy. 37) and the turn off to the townsite of Cassiar, British Columbia.

The Cassiar-Stewart highway (B. C. Hwy. 37) bisects the Red Claim.

Work Completed

A detailed geological mapping and prospecting programme was carried out over the Red Claim between June 18, 1979 and June 20, 1979. Mapping was completed on a topographic base map at a scale of 1 cm = 5,000 cm (1:5,000) prepared from an orthophotographic mosaic of the same scale. The geological base map is included as Figure 2.

The purpose of the programme was to locate any sulphide showings within the Devonian-Mississippian volcanic rocks of the Sylvester Group that underlie the Red Claim and to examine areas of vein quartz for possible gold mineralization.

Geology

The names and ages of the units are taken from G.S.C. Memoir 319, "McDame Map-Area, Cassiar District, British Columbia, Hubert Gabrielse, 1963", and Map Sheet 1110A, McDame.

The Red Claim is underlain by basic volcanic and argillaceous sedimentary rocks of the Devonian-Mississippian Sylvester Group.

The Sylvester Group is made up of basaltic to andesitic volcanic rocks and argillaceous to greywacke sedimentary rocks. Minor stratiform copper mineralization has been noted within the Group.

Within the Red Claim the Sylvester Group is a massive basaltic-andesite with minor pyrite. Quartz stockwork veins with associated carbonatized zone cut the volcanic rocks in some locals.

Results and Recommendations

Geological mapping and prospecting of the four units of the Red Claim failed to locate any sulphide or gold mineralization.

Further work within the Red Claim is not recommended for the present time.

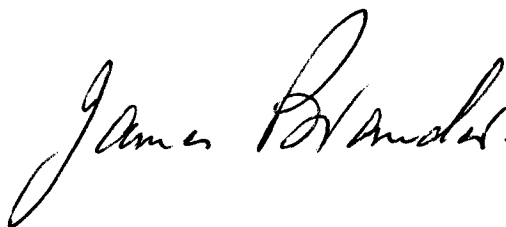
APPENDIX I

Qualifications of Author

I, Christopher J. C. Bloomer state that I am a geologist in Minerals Exploration of Shell Canada Resources Limited of Calgary, Alberta. I have obtained a B.Sc., '77 degree at the University of Toronto and have practiced my profession since graduation. I was directly involved with the work submitted here in this report.



C. J. C. Bloomer
Geologist
Minerals Exploration
Shell Canada Resources



J. M. Brander, P. Eng.
Senior Staff Geologist
Minerals Exploration
Shell Canada Resources Limited

APPENDIX II

Expenditures

The Red Claim was worked from June 18, 1979 to June 20, 1979 by one geologist and a geological assistant. Below is a listing of expenditures.

- | | | |
|---|------------------------------|------------|
| 1) Christopher Bloomer (Geologist): | 2 days @ \$85.00/day | = \$170.00 |
| 2) Larry Gagnon (Geological Assistant): | 2 days @ \$65.00/day | = 130.00 |
| 3) Room and Board: | 4 man days @ \$45.00/man day | = 180.00 |

Total Expenditures: \$480.00



- PLEISTOCENE AND RECENT**
- 14
- JURASSIC AND/OR CRETACEOUS**
- 11 CASSIAR INTRUSIONS
quartz, monzonite, granodiorite, granite
- DEVONIAN AND MISSISSIPPIAN**
- UPPER DEVONIAN AND LOWER MISSISSIPPIAN
- 8a SYLVESTER GROUP
greenstone, quartz, argillite
- 8b serpentine
- DEVONIAN**
- MIDDLE AND (?) UPPER DEVONIAN
- 7a McDAME GROUP
limestone, dolomite
- ORDOVICIAN, SILURIAN AND (?) DEVONIAN**
- 8b SANDPILE GROUP
dolomite, dolomitic sandstone
- CAMBRIAN AND ORDOVICIAN
MIDDLE AND (?) UPPER CAMBRIAN,
LOWER AND MIDDLE ORDOVICIAN
- 5 KECHIKA GROUP
limestone, slate, shale
- CAMBRIAN**
- LOWER CAMBRIAN
- 4 limestone, dolomite, shale
ATAN GROUP
- 3 quartzite, shale, slate
- 1 GOOD HOPE GROUP
limestone, dolomite, slate, argillite

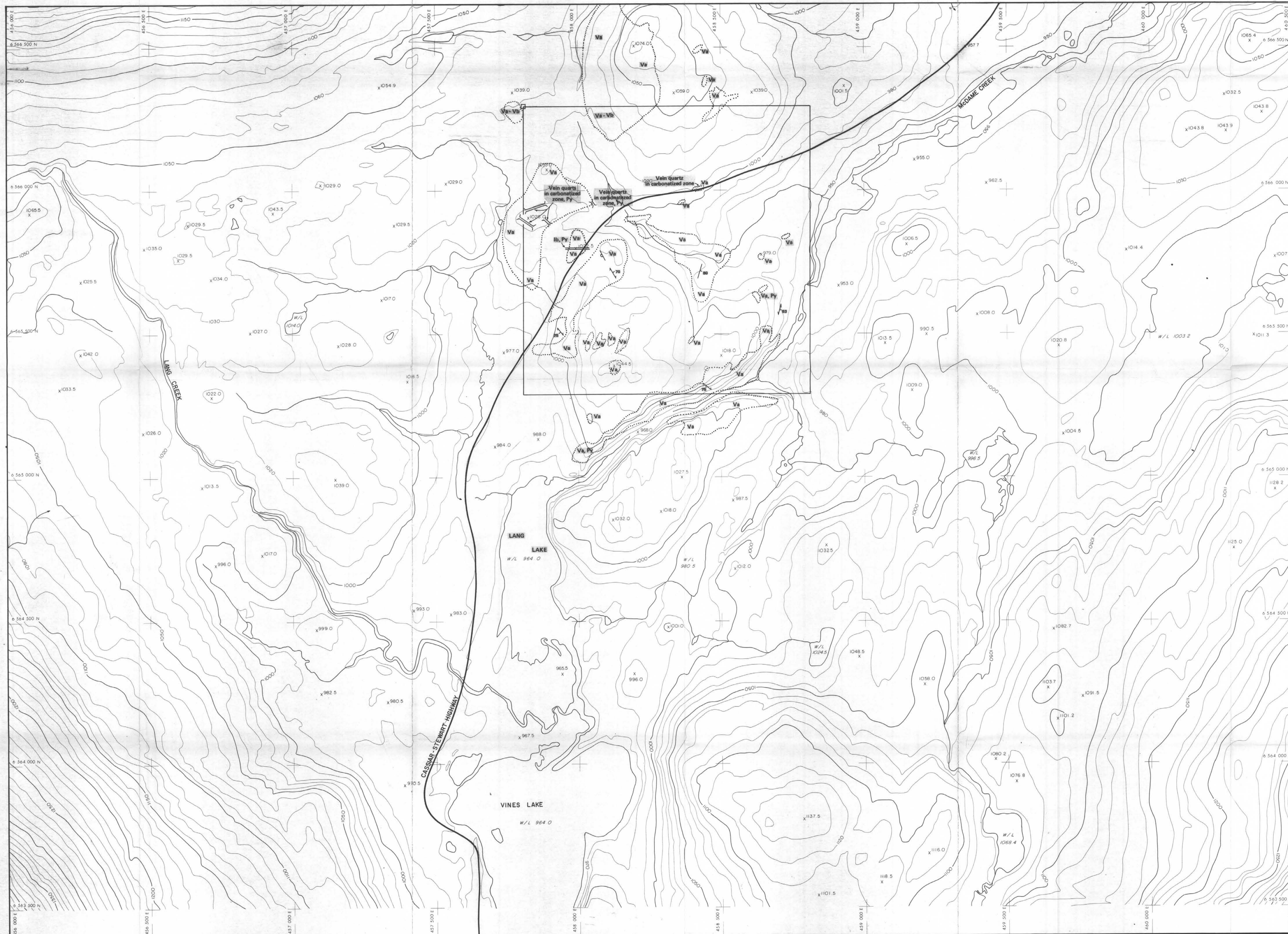
MINERAL RESOURCES BRITISH COLUMBIA
ACCOUNT NO. 7465
NO.

SCALE 1:25 000
0 500 1000 m

SHELL CANADA RESOURCES LIMITED
EXPLORATION - MINERALS

CASSIAR PROJECT
GEOLOGY

AUTHOR: C. BLOOMER
DATE: _____
SCALE: 1:25 000
DRAWING No.: VL-97
REVISED: _____
ENCLOSURE No.: FIG. 1
By Authority



7465
NO

LEGEND

DEVONIAN - MISSISSIPPIAN

Syvestre Group: Basalt (Va), Andesite (Va)
Basalt Dike (b)

SYMBOLS

SCHISTOSITY

PILLOWS WITH TOPS

BEDDING

TRENCH

Py

LEGAL CORNER POST

CLAIM BOUNDARY

SHELL CANADA RESOURCES LIMITED
EXPLORATION - MINERALS

**CASSIAR PROJECT B.C.
RED CLAIM**

CONTOUR INTERVAL - 10m
AUTHOR: C. BLOOMER
DATE: 1978-06
SCALE: 1:5000
DRAWING NO.:
REVISION: ENCLOSURE NO.: FIG. 2

SHEET INDEX

8	6	3
7	5	2
	4	

Scale and elevation datum based on limited ground control resulting in grid reference, but uncertain absolute map accuracy.
Compiled from aerial photography at an approximate scale of 1:33,000 from 1975

McElhenny
McElhenny Surveying & Engineering Ltd.
1200 West Pender Street, Vancouver, B.C., Canada

Scale: 1:5000
Contour Interval: 10 Metres
Date: June 1978
Job No.: 06598-1
Sheet No.: 1 of 8

SHELL CANADA LIMITED
CASSIAR AREA
PRELIMINARY RECONNAISSANCE TYPE MAPPING