

REPORT ON PERCUSSION DRILLING

DAWN CLAIMS

LORNEX MINING CORPORATION LTD.

by

N. V. Holowachuk

CLAIMS: Dawn #6 - Record No. 38236 M  
Dawn #8 - Record No. 38238 M

LOCATION: Highland Valley - about 24 miles southeast of  
Ashcroft, B. C., Kamloops Mining Division

121° 00' W, 50° 27' N, N.T.S. 92-J/6F

7491

TABLE OF CONTENTS

	<u>PAGE</u>
SUMMARY	1
INTRODUCTION	1
LOCATION AND ACCESS	2
PERCUSSION DRILLING RESULTS	2-3-4
CONCLUSION AND RECOMMENDATIONS	4

APPENDICES

- I LIST OF PERSONNEL AND COSTS
- II STATEMENT OF QUALIFICATIONS
- III ASSAY RESULTS FOR PERCUSSION HOLES 78-1 TO 78-8 INCLUSIVE

MAPS AND ILLUSTRATIONS

- Figure A LOCATION MAPS
- Figure B DRILL HOLE AND ROAD LOCATION
- Figure C ROAD LOCATIONS

## REPORT ON PERCUSSION DRILLING

### DAWN CLAIMS

#### SUMMARY

A total of eight percussion holes were drilled on the Dawn #6 and Dawn #8 claims in the Highland Valley area of B.C. Ten foot sludge samples were taken at 10 foot intervals and assayed for copper and molybdenum. As shown by the included assay sheets the copper and molybdenum mineralization in the areas tested are non-economic.

#### INTRODUCTION

During November 1978, eight percussion holes were drilled on Dawn #6 and Dawn #8 claims owned by Lornex Mining Corporation Ltd. and located in the Highland Valley of B.C.

Drilling began on November 2, 1978 and continued through to November 16, 1978 under contract to Al Miller Percussion Drilling Ltd. of Kamloops, B. C. and was under supervision of M. W. Waldner and N. V. Holowachuk.

A total of 3,200 feet (8 - 400 foot holes) were completed to test for the existence of copper and molybdenum mineralization.

Two percussion holes were drilled on mineral claim Dawn #6 and six more were drilled on Dawn #8.

Sludge samples were collected each ten foot interval and the samples were assayed for total copper and molybdenum by the Lornex assay laboratory using the atomic absorption technique.

LOCATION AND ACCESS

The above claims are located in the Highland Valley, about 24 miles by road southeast of Ashcroft, B. C. between Highmont Mining Corporation Ltd. and Lornex Mining Corporation Ltd. Latitude 50° 27' N, Longitude 121° 00' W, N.T.S. 92-I/6E.

PERCUSSION DRILLING RESULTS

A truck mounted percussion drill was used to drill all eight holes. Water was hauled by truck from the washbay situated by the Mine Operations office. All access roads and drill sites were prepared prior to commencement of the drill program. All holes were drilled vertically to a depth of 400 feet. Overburden depths ranged from 10 to 40 feet and averaged approximately 22 feet. A total of 300 ten foot sludge samples were taken in bedrock. The samples averaged 0.031% total copper and the average molybdenum values were 0.007%.

The following is a resume' of the drill hole results.

DH 78-1

The hole was collared on November 2 and completed on November 3, 1978 on Dawn #8 M.C.

Depth - 400'

Overburden Depth - 35'

Average Total Cu - 0.0193%

Average Total Mo - 0.0012%

DH 78-2

The hole was collared on November 3, 1978 and completed on November 4, 1978 on Dawn #8 M.C.

Depth - 400'

Overburden Depth - 22'

Average Total Cu - 0.0395%

Average Total Mo - 0.0001%

DH 78-3

The hole was collared on November 5 and completed on November 6, 1978.

Depth - 400'

Overburden Depth - 40'

Average Total Cu - 0.0125%

Average Total Mo - 0.0005%

DH 78-4

The hole was collared on November 6 and completed on November 7, 1978.

Depth - 400'

Overburden Depth - 15'

Average Total Cu - 0.0840%

Average Total Mo - 0.0008%

DH 78-5

The hole was collared on November 8 and completed on November 9, 1978.

Depth - 400'

Overburden Depth - 15'

Average Total Cu - 0.0509%

Average Total Mo - 0.0016%

DH 78-6

The hole was collared on November 10 and completed on November 13, 1978.

Depth - 400'

Overburden Depth - 30'

Average Total Cu - 0.0243%

Average Total Mo - 0.0004%

DH 78-7

The hole was collared on November 14 and completed on November 15, 1978.

Depth - 400'

Overburden Depth - 11'

Average Total Cu - 0.0107%

Average Total Mo - 0.0005%

DH 78-8

The hole was collared on November 15 and completed on November 16, 1978.

Depth - 400'

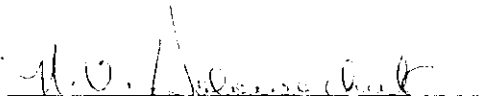
Overburden Depth - 10'

Average Total Cu - 0.0033%

Average Total Mo - Tr.

CONCLUSIONS AND RECOMMENDATIONS

With the exception of a 0.46% total copper over 10 feet and a 0.23% total copper in the last 30 feet of drill hole 78-4, the copper and molybdenum grades were non-economic. Drill hole 78-4 was drilled on the south corner of Dawn #8 M.C., adjacent to Highmont's west pit. The percussion drill program results concur with previous exploration programs in the area.

  
\_\_\_\_\_  
N. V. Holowachuk  
Pit Geologist

NVH/els

APPENDIX I

CLAIM NAME	BULLDOZER & OPERATOR @ \$100/hr		PERCUSSION DRILLING @ \$3.75/ft		ASSAYING @ \$10/SAMPLE		TOTAL
	Hours	Cost	Total Footage	Cost	Total No. Of Samples	Cost	
Dawn #8	18	\$1,800	2400'	\$9,000	225	\$2,250	\$13,050.00
Dawn #6	6	\$ 600	800'	\$3,000	75	\$ 750	\$ 4,350.00
		* See below for more details					
Employee	Position		Work Done		No. of Days Worked	Cost/ Day	
M. W. Waldner	Mine Geologist		Field - Hole locations and supervision		3	\$165	\$ 495.00
N. V. Holowachuk	Pit Geologist		Program planning, field supervision and report writing		11	\$135	\$ 1,485.00
A 1977, 3/4 ton, Chevrolet, 4 x 4 Pickup truck was used for 4 days at a cost of \$40/day							\$ 160.00
A union permit was obtained and paid for by Lornex Mining Corporation at a cost of \$64							\$ 64.00

GRAND TOTAL                    \$19,604.00

Dawn #6

A road 180 meters long and 4 meters wide was built and/or improved (improved meaning; water holes filled and made passable, fallen trees removed and in general the road made wider and smoother.) Two percussion drill sites were prepared for a total of 6 hours at a cost of \$100 per hour for a bulldozer and operator.

Dawn #8

A road 700 meters long and 4 meters wide was built and/or improved and a total of 6 percussion drill sites prepared for a total of 18 hours at a cost of \$100 per hour for a bulldozer and operator.

The total hours for drill site preparation and road building or improving number 24 at \$100 per hour = \$2400.00.

NOTE See map marked figure B & figure C for road locations.

APPENDIX II

STATEMENT OF QUALIFICATIONS

N. V. Holowachuk

I graduated with a B. Sc. in geology from the University of Brandon, Manitoba in 1971. Prior to graduating and until July of 1974, I was employed by Newmont Mining Corporation as an exploration geologist. From August of 1974 to August 1977 I was employed by Newmont Mines Ltd. - Similkameen Division as a geologist. Since August, 1977, I have been employed as pit geologist by Lornex Mining Corporation Ltd.

N. V. Holowachuk



# Appendix III LORNEX MINING CORPORATION LTD.

## ASSAY REPORT

LABORATORY DEPARTMENT

Date Sampled: \_\_\_\_\_

Sludges Percussion Drill Hole 78-1

ORDER NO.	Footage	LOCATION/DESCRIPTION	TOTAL % CU.	OXIDIZED % CU.	TOTAL % MO.
1	0-35	overburden	0.015		0.001
2	35-50		0.015		0.002
3	50-60		0.015		0.001
4	60-70		0.025		0.001
5	70-80		0.010		0.001
6	80-90		0.020		0.001
7	90-100		0.015		0.001
8	100-110		0.015		0.005
9	110-120		0.025		0.001
10	120-130		0.020		0.001
11	130-140		0.025		0.002
12	140-150		0.025		0.001
13	150-160		0.020		0.001
14	160-170		0.015		0.001
15	170-180		0.020		0.002
16	180-190		0.015		0.002
17	190-200		0.020		0.002
18	200-210		0.015		0.002
19	210-220		0.015		0.002
20	220-230		0.015		0.002
21	230-240		0.015		0.002
22	240-250		0.015		0.002

Reported: S-11-78

Ch. Chemist: D. Lincoln

# LORNEX MINING CORPORATION LTD.

## ASSAY REPORT

NE DEPARTMENT

Date Sampled: \_\_\_\_\_

Sludges Percussion Drill Hole 78-1

DEPTH	LOCATION/DESCRIPTION	TOTAL % CU.	OXIDIZED % CU.	TOTAL % MO.
	Footage			
1	250-260	0.015		0.001
	260-270	0.010		0.001
	270-280	0.010		0.001
	280-290	0.015		0.001
	290-300	0.015		0.001
	300-310	0.050		0.002
	310-320	0.025		0.001
	320-330	0.020		0.001
	330-340	0.020		0.001
0	340-350	0.020		0.001
1	350-360	0.020		0.001
2	360-370	0.020		0.001
3	370-380	0.015		0.001
4	380-390	0.030		0.002
5	390-400	0.035		0.001
6				
7				
8				
9				
0				
1				

Reported: 5-11-78

Ch. Chemist: D. Lincoln

# LORNEX MINING CORPORATION LTD.

## ASSAY REPORT

DEPARTMENT

Date Sampled: \_\_\_\_\_

Sludges Percussion Drill Hole 78-2

DEPTH	LOCATION/DESCRIPTION	TOTAL % CU.	OXIDIZED % CU.	TOTAL % MO.
Footage				
0 - 22'	Overburden	—		—
22 - 40'		0.02		0.001
40 - 50'		0.02		0.001
50 - 60'		0.01		0.001
60 - 70'		0.02		0.001
70 - 80'		0.01		0.001
80 - 90'		0.01		0.001
90 - 100'		0.01		0.001
100 - 110'		0.02		0.001
110 - 120'		0.04		0.001
120 - 130'		0.05		0.002
130 - 140'		0.04		0.001
140 - 150'		0.03		0.001
150 - 160'		0.02		0.002
160 - 170'		0.03		0.001
170 - 180'		0.03		Tr
180 - 190'		0.03		Tr
190 - 200'		0.06		0.001
200 - 210'		0.07		Tr
210 - 220'		0.06		Tr
220 - 230'		0.05		0.001

Reported: 7-11-78

Ch. Chemist: D. Lincoln

# LORNEX MINING CORPORATION LTD.

## ASSAY REPORT

NE DEPARTMENT

Date Sampled: \_\_\_\_\_

Sludges Percussion Drill Hole 7B-2

ORDER NO.	FOOTAGE	LOCATION/DESCRIPTION	TOTAL % CU.	OXIDIZED % CU.	TOTAL % MO.
1	230-240'		0.04		Tr
2	240-250'		0.05		0.001
3	250-260'		0.06		Tr
4	260-270'		0.05		Tr
5	270-280'		0.04		Tr
6	280-290'		0.04		Tr
7	290-300'		0.08		0.001
8	300-310'		0.07		0.001
9	310-320'		0.05		Tr
10	320-330'		0.06		0.001
11	330-340'		0.05		Tr
12	340-350'		0.05		Tr
13	350-360'		0.05		0.001
14	360-370'		0.07		0.001
15	370-380'		0.06		0.001
16	380-390'		0.04		0.001
17	390-400'		0.03		0.001
18					
19					
20					
21					

Date Reported: 7, 11, 1978

Ch. Chemist: D. Lincoln

# LORNEX MINING CORPORATION LTD.

## ASSAY REPORT

DEPARTMENT

Date Sampled: \_\_\_\_\_

Sludges Percussion Drill Hole 78-3

DER NO.	FOOTAGE	LOCATION/DESCRIPTION	TOTAL % CU.	OXIDIZED % CU.	TOTAL % MO.
1	0 - 40'	overburden			
2	40 - 50		0.01		0.005
3	50 - 60		0.01		0.005
4	60 - 70		0.01		0.005
5	70 - 80		0.01		0.005
6	80 - 90		0.01		0.005
7	90 - 100		0.01		0.005
8	100 - 110		0.01		0.005
9	110 - 120		0.01		0.005
10	120 - 130		0.01		0.001
11	130 - 140		0.01		0.005
12	140 - 150		0.01		0.002
13	150 - 160		0.01		0.002
14	160 - 170		0.02		Tr
15	170 - 180		0.01		Tr
16	180 - 190		0.01		Tr
17	190 - 200		0.01		Tr
18	200 - 210		0.01		Tr
19	210 - 220		0.01		Tr
20	220 - 230		0.01		Tr
21	230 - 240		0.01		Tr

**7491**

Reported: B, 11, 78

Ch. Chemist: D. Lincoln

LORNEX MINING CORPORATION LTD.

**ASSAY REPORT**

DEPARTMENT

Date Sampled: \_\_\_\_\_

Sludges Percussion Drill Hole 78-3

DER O.	LOCATION/DESCRIPTION	TOTAL % CU.	OXIDIZED % CU.	TOTAL % MO.
	Footage			
1	240-250	0.01		Tr
2	250-260	0.01		Tr
3	260-270	0.02		Tr
4	270-280	0.01		Tr
5	280-290	0.01		Tr
6	290-300	0.02		Tr
7	300-310	0.02		Tr
8	310-320	0.02		Tr
9	320-330	0.03		Tr
10	330-340	0.02		Tr
11	340-350	0.02		Tr
12	350-360	0.01		Tr
13	360-370	0.02		Tr
14	370-380	0.02		Tr
15	380-390	0.02		Tr
16	390-400	0.02		Tr
17				
18				
19				
20				
21				

Reported: 2, 11, 78

Ch. Chemist: D. Lincoln

# LORNE MINING CORPORATION LTD.

## ASSAY REPORT

LABORATORY DEPARTMENT

Date Sampled: \_\_\_\_\_

Sludges Percussion Drill Hole 78-4

ORDER NO.	FOOTAGE	LOCATION/DESCRIPTION	TOTAL % CU.	OXIDIZED % CU.	TOTAL % MO.
1	0 - 15'	Overburden			
2	15 - 30		0.04		Tr
3	30 - 40		0.46		Tr
4	40 - 50		0.16		Tr
5	50 - 60		0.08		Tr
6	60 - 70		0.03		Tr
7	70 - 80		0.02		Tr
8	80 - 90		0.03		Tr
9	90 - 100		0.03		Tr
10	100 - 110		0.04		Tr
11	110 - 120		0.04		Tr
12	120 - 130		0.07		Tr
13	130 - 140		0.01		Tr
14	140 - 150		0.02		Tr
15	150 - 160		0.05		Tr
16	160 - 170		0.06		Tr
17	170 - 180		0.04		Tr
18	180 - 190		0.02		Tr
19	190 - 200		0.04		Tr
20	200 - 210		0.04		Tr
21	210 - 220		0.04		Tr

Reported: 9, 11, 1978

Ch. Chemist: D - Lincoln

# LORNEX MINING CORPORATION LTD.

## ASSAY REPORT

NE DEPARTMENT

Date Sampled: \_\_\_\_\_

Sludges Percussion Drill Hole 78-4

ORDER NO.	LOCATION/DESCRIPTION	TOTAL % CU.	OXIDIZED % CU.	TOTAL % MO.
1	Footage 220-230	0.05		Tr
2	230-240	0.06		Tr
3	240-250	0.06		Tr
4	250-260	0.05		Tr
5	260-270	0.06		Tr
6	270-280	0.15		0.003
7	280-290	0.07		0.002
8	290-300	0.11		0.002
9	300-310	0.06		0.002
10	310-320	0.05		0.002
11	320-330	0.05		0.003
12	330-340	0.05		0.003
13	340-350	0.16		0.004
14	350-360	0.08		0.003
15	360-370	0.13		0.005
16	370-380	0.20		0.003
17	380-390	0.27		0.002
18	390-400	0.22		0.002
19				
20				
21				

Date Reported: 9, 11, 1978

Ch. Chemist: D. Lincoln



# LORNEX MINING CORPORATION LTD.

## ASSAY REPORT

LABORATORY DEPARTMENT

Date Sampled: \_\_\_\_\_

Sludges Percussion Drill Hole 78-5

ORDER NO.	Footage	LOCATION/DESCRIPTION	TOTAL % CU.	OXIDIZED % CU.	TOTAL % MO.
1	0-15 15-30	Overburden	0.02		Tr
2	30-40		0.01		Tr
3	40-50		0.01		0.001
4	50-60		0.02		0.001
5	60-70		0.02		0.007
6	70-80		0.05		0.002
7	80-90		0.04		0.001
8	90-100		0.03		0.001
9	100-110		0.04		0.001
10	110-120		0.04		0.001
11	120-130		0.21		0.003
12	130-140		0.08		0.002
13	140-150		0.06		0.002
14	150-160		0.08		0.002
15	160-170		0.08		0.003
16	170-180		0.06		0.001
17	180-190		0.06		0.002
18	190-200		0.06		0.001
19	200-210		0.04		0.001
20	210-220		0.06		0.002
21	220-230		0.05		0.001

Date Reported: 12, 11, 1978

Ch. Chemist: D. Lincoln

# LORNEX MINING CORPORATION LTD.

## ASSAY REPORT

NE DEPARTMENT

Date Sampled: \_\_\_\_\_

Sludges Percussion Drill Hole 78-5

ORDER NO.	LOCATION/DESCRIPTION	TOTAL % CU.	OXIDIZED % CU.	TOTAL % MO.
1	Footage 230-240	0.04		0.001
2	240-250	0.04		0.002
3	250-260	0.05		0.002
4	260-270	0.06		0.002
5	270-280	0.20		0.007
6	280-290	0.05		0.002
7	290-300	0.05		0.002
8	300-310	0.05		0.003
9	310-320	0.05		0.002
10	320-330	0.05		0.002
11	330-340	0.04		0.002
12	340-350	0.04		0.001
13	350-360	0.03		0.002
14	360-370	0.02		0.001
15	370-380	0.04		0.002
16	380-390	0.04		0.001
17	390-400	0.05		0.001
18				
19				
20				
21				

Date Reported: 12, 11, 1978

Ch. Chemist: D. Lincoln

# LORNEX MINING CORPORATION LTD.

## ASSAY REPORT

LABORATORY DEPARTMENT

Date Sampled: \_\_\_\_\_

Sludges Percussion Drill Hole 78-6

ORDER NO.	FOOTAGE	LOCATION/DESCRIPTION	TOTAL % CU.	OXIDIZED % CU.	TOTAL % MO.
1	0-18'	Over burden			
2	18-30		0.02		Tr
3	30-40		0.04		Tr
4	40-50		0.02		Tr
5	50-60		0.03		Tr
6	60-70		0.02		0.001
7	70-80		0.04		0.001
8	80-90		0.04		0.001
9	90-100		0.04		0.001
10	100-110		0.04		0.001
11	110-120		0.02		0.001
12	120-130		0.03		0.001
13	130-140		0.02		0.001
14	140-150		0.03		0.001
15	150-160		0.02		0.001
16	160-170		0.03		0.001
17	170-180		0.03		0.001
18	180-190		0.03		0.001
19	190-200		0.03		0.001
20	200-210		0.02		0.001
21	210-220		0.03		0.001

Date Reported: 16, 11, 1978

Ch. Chemist: D. Lincoln

# LORNEX MINING CORPORATION LTD.

## ASSAY REPORT

LABORATORY DEPARTMENT

Date Sampled: \_\_\_\_\_

Sludges Percussion Drill Hole 78-6

ORDER NO.	LOCATION/DESCRIPTION	TOTAL % CU.	OXIDIZED % CU.	TOTAL % MO.
1	Footage 220-230	0.02		Tr
2	230-240	0.02		Tr
3	240-250	0.03		Tr
4	250-260	0.02		Tr
5	260-270	0.02		Tr
6	270-280	0.02		Tr
7	280-290	0.02		Tr
8	290-300	0.02		Tr
9	300-310	0.03		Tr
10	310-320	0.03		N.D.
11	320-330	Tr		N.D.
12	330-340	Tr		N.D.
13	340-350	Tr		N.D.
14	350-360	Tr		N.D.
15	360-370	Tr		N.D.
16	370-380	0.06		N.D.
17	380-390	0.06		N.D.
18	390-400	0.03		N.D.
19				
20				
21				

\* N.D. - Not Detectable

Reported: 16, 11, 1978

Ch. Chemist: D. Lincoln

# LORNEX MINING CORPORATION LTD.

## ASSAY REPORT

LABORATORY DEPARTMENT

Date Sampled: \_\_\_\_\_

Sludges Percussion Drill Hole 78-7

ORDER NO.	Footage	LOCATION/DESCRIPTION	TOTAL % CU.	OXIDIZED % CU.	TOTAL % MO.
1	0-11'	Overburden			
2	11-30'		0.02		N.D.
3	30-40		Tr		N.D.
4	40-50		Tr		N.D.
5	50-60		Tr		N.D.
6	60-70		Tr		N.D.
7	70-80		Tr		N.D.
8	80-90		Tr		N.D.
9	90-100		Tr		N.D.
10	100-110		Tr		N.D.
11	110-120		Tr		N.D.
12	120-130		Tr		N.D.
13	130-140		Tr		N.D.
14	140-150		Tr		N.D.
15	150-160		Tr		N.D.
16	160-170		Tr		N.D.
17	170-180		Tr		N.D.
18	180-190		Tr		N.D.
19	190-200		Tr		N.D.
20	200-210		Tr		N.D.
21	210-220		Tr		N.D.

\* N.D. - Not Detectable

Reported: 16, 11, 1978

Ch. Chemist: D. Lincoln

# LORNEX MINING CORPORATION LTD.

## ASSAY REPORT

LABORATORY DEPARTMENT

Date Sampled: \_\_\_\_\_

Sludges Percussion Drill Hole 78-7

ORDER NO.	FOOTAGE	LOCATION/DESCRIPTION	TOTAL % CU.	OXIDIZED % CU.	TOTAL % MO.
1	220-230		0.01		0.001
2	230-240		0.01		0.001
3	240-250		0.02		0.001
4	250-260		0.02		0.001
5	260-270		0.01		0.001
6	270-280		0.01		0.001
7	280-290		0.01		0.001
8	290-300		0.01		0.001
9	300-310		0.03		0.001
10	310-320		0.02		0.001
11	320-330		0.04		0.001
12	330-340		0.03		0.001
13	340-350		0.03		0.001
14	350-360		0.03		0.001
15	360-370		0.03		0.001
16	370-380		0.03		0.001
17	380-390		0.02		0.001
18	390-400		0.03		0.001
19					
20					
21					

Date Reported: 16, 11, 1978

Ch. Chemist: D. Lincoln

# LORNEX MINING CORPORATION LTD.

## ASSAY REPORT

MINING DEPARTMENT

Date Sampled: \_\_\_\_\_

Sludges Percussion Drill Hole 78-B

ORDER NO.	FOOTAGE	LOCATION/DESCRIPTION	TOTAL % CU.	OXIDIZED % CU.	TOTAL % MO.
1	0-10	Overburden			
2	10-20		Tr		Tr
3	20-30		Tr		Tr
4	30-40		Tr		Tr
5	40-50		Tr		Tr
6	50-60		Tr		Tr
7	60-70		Tr		Tr
8	70-80		Tr		Tr
9	80-90		Tr		Tr
10	90-100		Tr		Tr
11	100-110		Tr		Tr
12	110-120		Tr		Tr
13	120-130		Tr		Tr
14	130-140		Tr		Tr
15	140-150		Tr		Tr
16	150-160		Tr		Tr
17	160-170		Tr		Tr
18	170-180		Tr		Tr
19	180-190		Tr		Tr
20	190-200		Tr		Tr
21	200-210		Tr		Tr

Date Reported: 17, 11, 1978

Ch. Chemist: D. Lincoln

# LORNE MINING CORPORATION LTD.

## ASSAY REPORT

LABORATORY DEPARTMENT

Date Sampled: \_\_\_\_\_

Sludges Percussion Drill Hole 78-8

ORDER NO.	FOOTAGE	LOCATION/DESCRIPTION	TOTAL % CU.	OXIDIZED % CU.	TOTAL % MO.
1	210-220		Tr		Tr
2	220-230		Tr		Tr
3	230-240		Tr		Tr
4	240-250		Tr		Tr
5	250-260		Tr		Tr
6	260-270		Tr		Tr
7	270-280		Tr		Tr
8	280-290		0.02		N.D.
9	290-300		0.04		N.D.
10	300-310		Tr		Tr
11	310-320		Tr		Tr
12	320-330		0.01		N.D.
13	330-340		Tr		Tr
14	340-350		0.01		N.D.
15	350-360		Tr		Tr
16	360-370		0.01		N.D.
17	370-380		0.03		N.D.
18	380-390		Tr		Tr
19	390-400		0.02		N.D.
20					
21					

**7491**

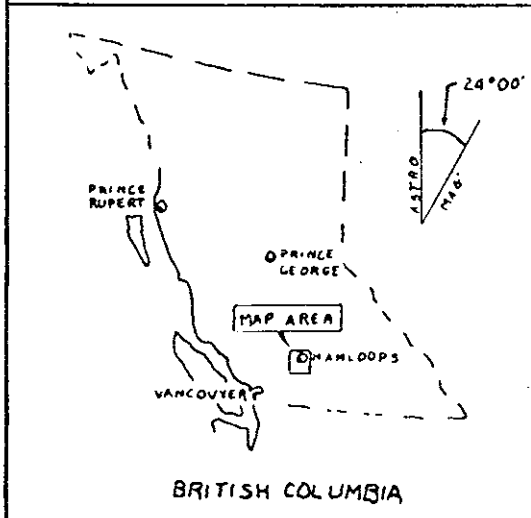
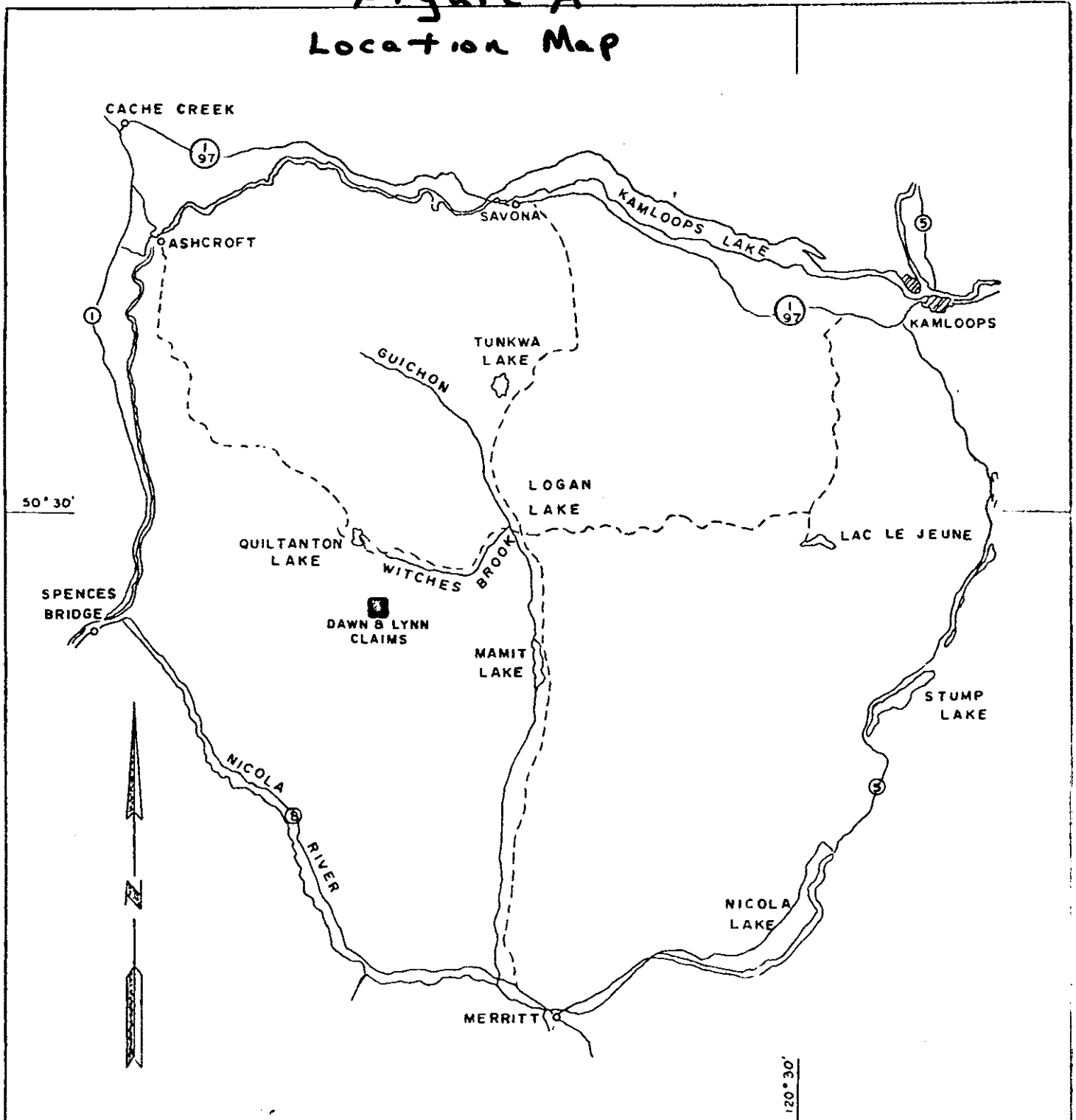
\* N.D. - Not Detectable

Reported: 17, 11, 1978

Ch. Chemist: D. Lincoln

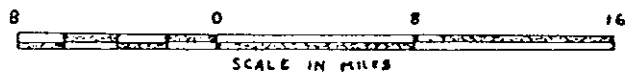


# Figure A Location Map



LORNEX MINING CORPORATION LTD.

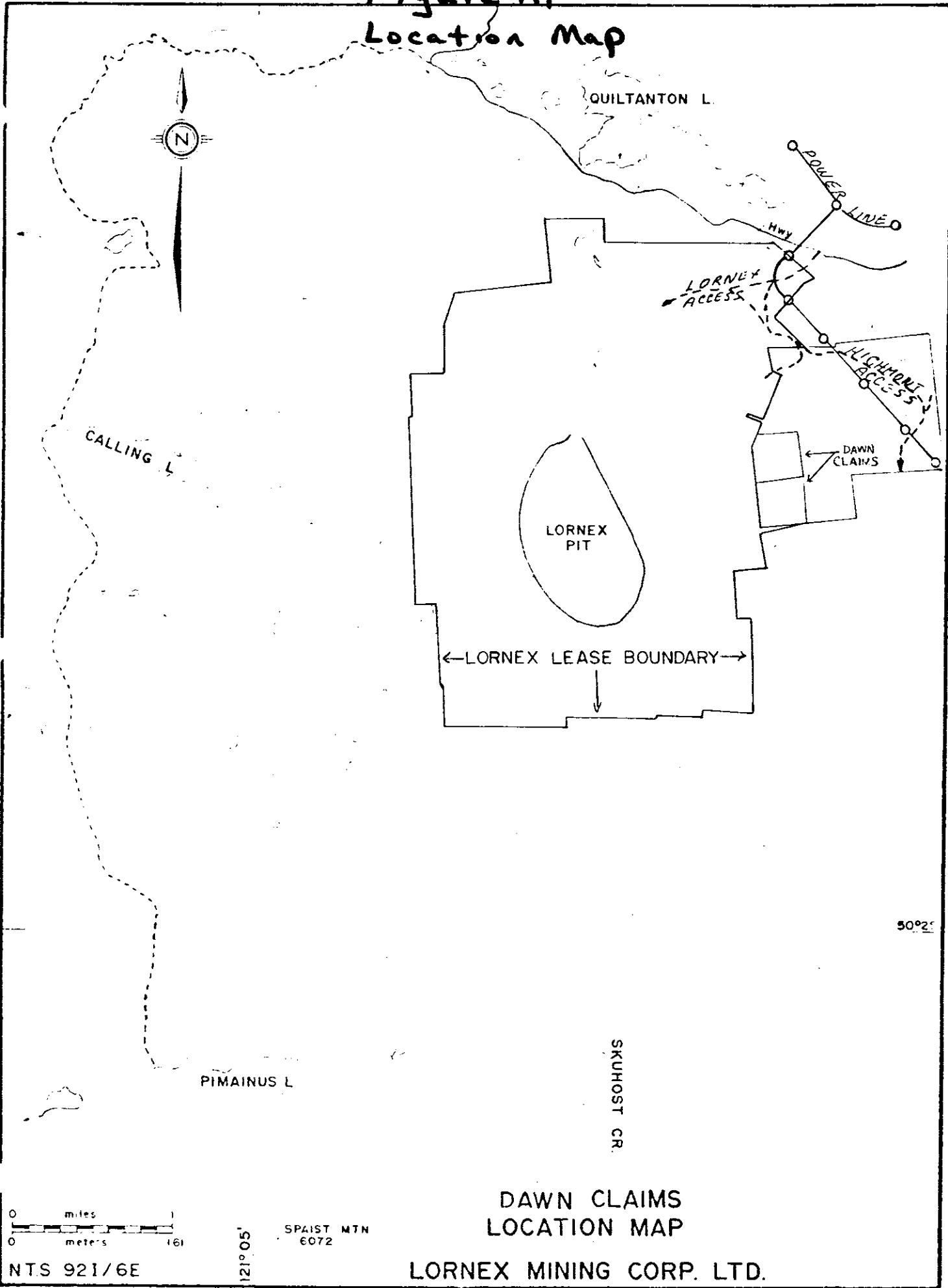
LOCATION MAP



DRAWN BY M. COPPING

FIGURE A

# Figure A, Location Map



QUILTANTON L.

POWER LINE

Hwy

LORNEX ACCESS

HIGHWAY ACCESS

DAWN CLAIMS

CALLING L.

LORNEX PIT

←LORNEX LEASE BOUNDARY→

50°25'

PIMAINUS L.

SKUHOST CR.

0 1  
miles  
0 161  
meters

50°25'  
121°05'  
SPAIST MTN  
6072

DAWN CLAIMS  
LOCATION MAP

NTS 921/6E

LORNEX MINING CORP. LTD.

**HIGHLAND VALLEY  
COMPASS AND CHAIN SURVEY  
OF THE LOCATION LINE OF MINERAL CLAIMS  
BEING LYNN 1 TO 8 INCLUSIVE  
KAMLOOPS MINING DIVISION.**

SCALE: 1 INCH = 400 FEET 12.5 m

S.J. #92 M.C.

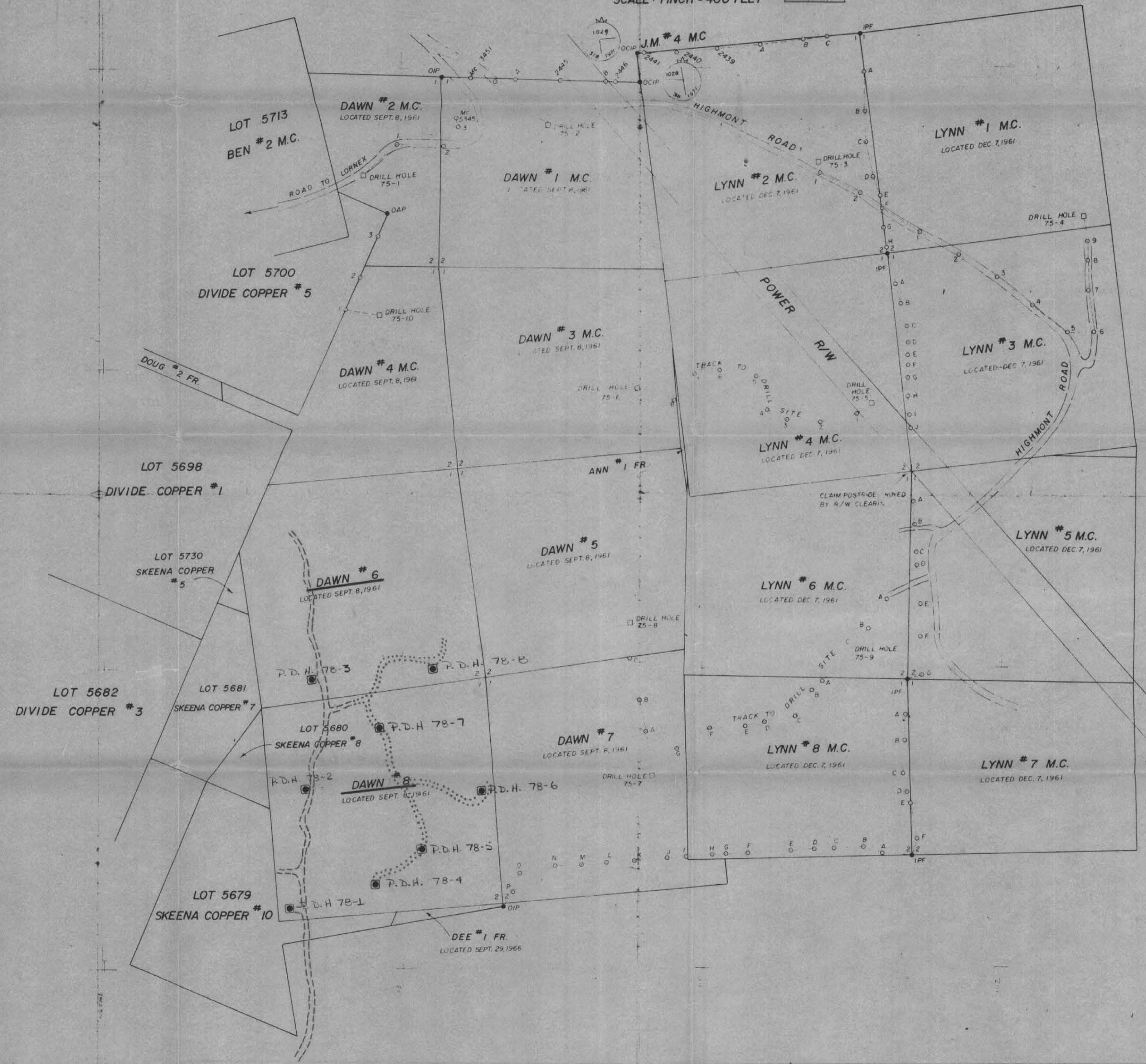


Figure B

7491

- LEGEND**
- OIP DENOTES CAPPED IRON POST FOUND
  - OIP DENOTES IRON POST FOUND
  - OAP DENOTES ALUMINUM POST FOUND
  - IPF DENOTES IRON POST FOUND (NO PREVIOUS RECORD)
  - A DENOTES TRAVERSE POINT
  - DENOTES DRILL HOLE
  - ⊠ DENOTES PERCUSSION DRILL HOLE
- ROAD (TRACKS) BUILT AND/OR IMPROVED  
BEARINGS ARE ASTROMOMIC AND DERIVED FROM LOCATION  
LINE OF DAWN 1 AND 2 FROM PLAN, McELHANNAY JOB NO 03117-0

McELHANNAY ASSOCIATES  
PROFESSIONAL LAND SURVEYORS  
1200 WEST PENDER STREET  
VANCOUVER, B.C.

JULY, 1975.

JOB NO 13155-D

FIGURE 'C'

LORNE MINING CORP. LTD.

MINERAL CLAIMS AND LEASES

SHOWING BETHLEHEM AND VALLEY COPPER

CLAIMS IN TAILINGS AREA AGREEMENT

SCALE: 1" = 2000'

DATE: MAY 17, 1979 DRAWN BY: J. ST. A.

7491

FIGURE 'C'

--- EXISTING ROADS  
--- BUILT AND/OR IMPROVED ROADS

