

Geochemical Assessment Report

on portions of the

Last Group and Gilt Claim

Centred 37 kilometres North of the Town of Hope,  
and 2 kilometres east of the Fraser River

New Westminster Mining Division  
British Columbia

N.T.S. 92H/11 (W 1/2)

Latitude 49°41'N; Longitude 121°22'W

Field Work Between June 18 and July 5, 1979

on behalf of

AQUARIUS RESOURCES LTD.

7495

Report by

D. R. Cochrane, P. Eng.

September 20, 1979

Delta, B. C.



Cochrane Consultants Limited  
4882 Delta St., Delta, B.C. V4K 2T8 946-9221  
Geotechnical Consulting / Exploration Services

geology  
geophysics  
geochemistry

TABLE OF CONTENTS

	Page
INTRODUCTION .....	1
LOCATION AND ACCESS .....	2
CLAIMS INFORMATION .....	3
GENERAL SETTING .....	4
FIELD PROCEDURES.....	6
DISCUSSION OF RESULTS .....	7

FIGURES

1.	Location Map	Report body
2.	Claims Map	" "
54	Geochemical Data	Map Pocket
56	Geochemical Contours	" "

APPENDICES

I	Certificate
II	Assessment Work Details

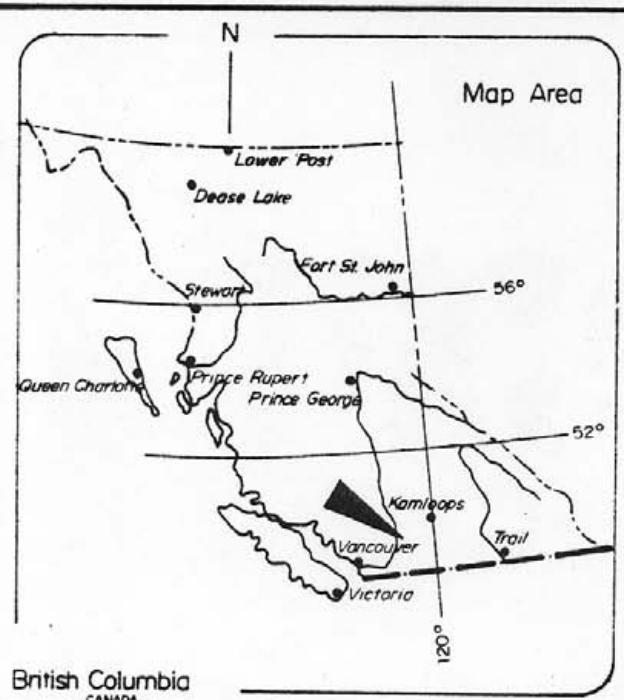
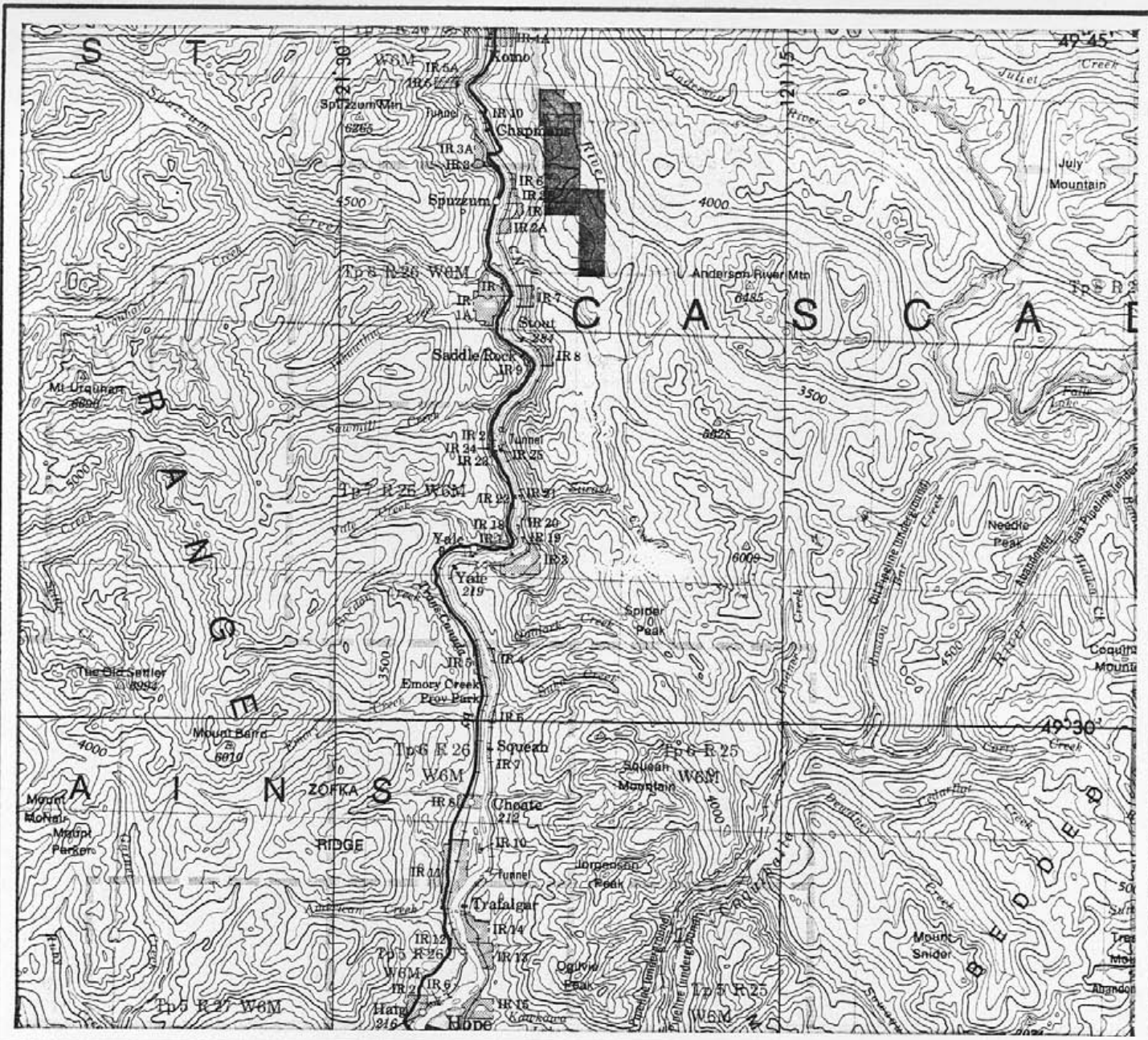
7495




INTRODUCTION

The Last Group of mineral claims, and the Gilt claim lie along the northern position of the Coquihalla Gold Belt of Southwestern British Columbia. Mineral exploration work along the belt has been nearly continuous (since the increase in price of gold) by such companies as Carolin Mines and, in this case, Longbar Minerals (or Aquarius Resources Ltd.) This portion of work conducted in June and July 1979 consisted of the establishment of a grid and the collection of 662 upper B horizon soil samples and then analyzed for gold content. This report was prepared for assessment work submission and assessment work details are set out in Appendix II.

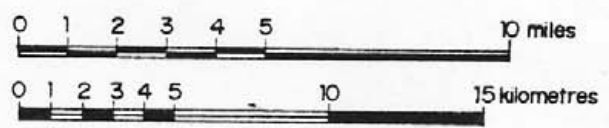





**AQUARIUS RESOURCES LTD.**

Last Group & Gift Claim      New Westminster M.D.  
 Figure 1      From 92 H - Hope Sheet  
 Location Map

Scale : 1 to 250,000 or 1 inch equals approx. 4 miles.



British Columbia  
CANADA

B.A.C. 10-79

Proj. No 2020LG

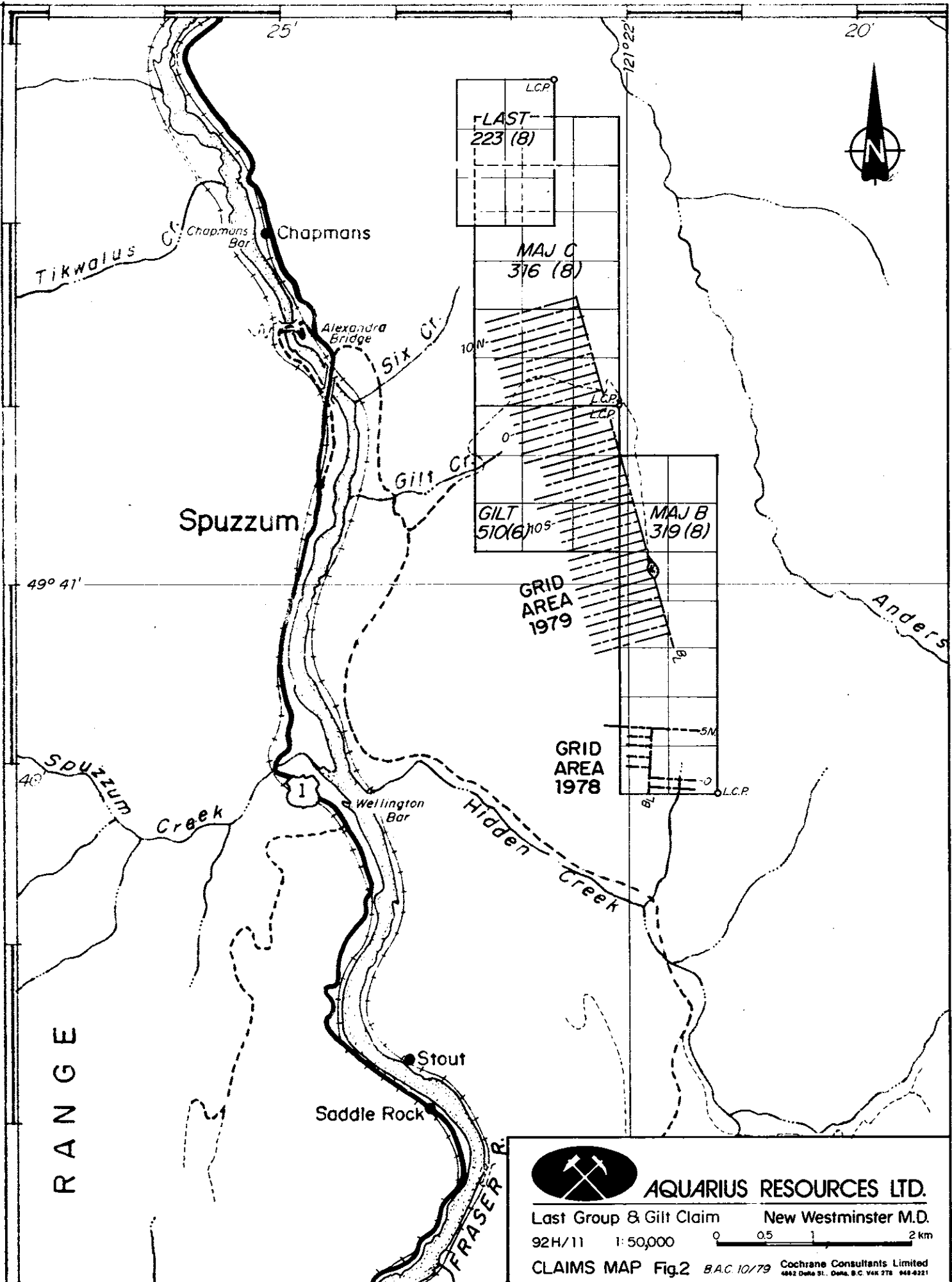
  
 Cochrane Consultants Limited  
 4827 Delta St. Delta B.C. V4K 1T8 844-0211

LOCATION AND ACCESS

The Last Group is situated immediately east of the Fraser Canyon at Chapmans, some 37 air kilometres due north of Hope, B. C. Normal access is by truck by proceeding southerly along the logging road departing from the east end of the Alexandra Bridge (Fraser Canyon Highway) and easterly up the Gilt Creek road and finally north along a gravel access road to near the claims location. The remainder is on foot. Alternate and facile access to the north end of the claims is by helicopter and from heliports based in Hope and Agassiz, B. C.

The longitude is  $121^{\circ}22'W$ ; latitude  $49^{\circ}41'N$  and N.T.S. code 92H/11 (west 1/2).





**AQUARIUS RESOURCES LTD.**

Last Group & Gilt Claim      New Westminster M.D.

92H/11    1:50,000    0    0.5    1    2 km

CLAIMS MAP Fig.2    BAC 10/79    Cochrane Consultants Limited  
 4882 Delta St. Delta, B.C. V4K 2T8    648-8321

PROPERTY INFORMATION

The Last Group is comprised of three claims namely the Last, Maj C, and Maj B Mineral Claims. Pertinent claims information is listed below.

CLAIM	RECORD NO.	ANNIVERSARY DATE	EXPIRY DATE	
			before credits	after credits
Last Group				
Last	223	August 22,	1981	1982
Maj C	316	August 11,	1979	1982
Maj B	319	August 11,	1979	1982
not grouped				
Gilt	510	June 25,	1979	1982

Claims Ownership: Aquarius Resources Ltd.



GENERAL SETTING

The Last Group of claims straddles the Hozameen Fault; the central axis of the fault lies along the western margin of the Methow Graben, a major geological feature of the Northern Cascade Range of Washington and British Columbia. (McKee, 1972). The principal structural and lithological element is a north trending sheared serpentine band which separates the younger (mid Jurassic) Ladner Slate Group to the east of the Fault from the older (paleozoic) Hozameen Group rocks, and an altered ultra basic and basic rock complex of unknown age. The gold occurrences along the belt are of various types including shear zone, vein, breccia and replacement varieties with some deposits exhibiting overlapping characteristics. Most of the former production was from shear zone and vein type deposits but current exploration attention is biased towards deposits with larger dimensions such as breccia and replacement types since these are amenable to large tonnage low cost mechanized mining techniques.





The majority of the gold occurrences discovered to date along the Coquihalla Gold Belt lie within, or close to, the Hozameen Fault system and within either altered basic rocks or the Ladner Group slates. These include the Monument, located 11 kilometres south of the Last Claim and the Idaho Zone of Carolin Mines Ltd., situated some 26 kilometres south of the Last Claim.



FIELD PROCEDURES

A base line was compassed northerly (azimuth 345°) and then southerly (azimuth 165°) from a road junction on the Gilt Creek Road near the common and east corner of the Maj C and Gilt claim. The base line is slope corrected with flagged stations at 50 metre intervals and is a total of 3.8 kilometres long. Soil samples were collected at 50 metre intervals along the base line and on a total of 37 cross lines perpendicular to the base line spaced 100 metres apart. The cross lines are compassed and flagged and samples were collected during the grid establishment. Soil samples were collected from the upper B soil horizon (where possible) and between one and a few decimetres in depth. Samples were placed in standard kraft paper bags with the line and station number marked, and air dried at the Siwash field camp. They were then packed in cardboard cartons and delivered to Min-En Labs of North Vancouver, for gold analysis. Min-En use an aqua regia extraction and Atomic Adsorption technique. Results are in parts per billion. (ppb)



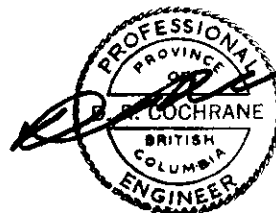
DISCUSSION OF RESULTS

The gold content of upper B horizon soil samples on the Last Group ranged from a low of less than 5 ppb to a high of 350 ppb. The vast majority of results lie in the  $\angle$ 5 to 10 ppb range and only 15% of the samples contained values of 15 ppb or greater. The area is considered relatively amenable to geochemical soil sampling since there is usually fair upper B horizon soil development, however there are areas known to contain extensive bolder clay overburden. (in some road cuts).

The two most extensive anomalies lie in the northwest section of the sampled area, and along and close to the Hozameen and ancillary faults.

More detailed sampling followed by bulldozer trenching is recommended.

Respectfully submitted



D. R. Cochrane, P. Eng.



APPENDIX I

CERTIFICATE

I, Donald Robert Cochrane, of the Municipality of Delta, British Columbia, do hereby certify that:

1. I am a consulting geological engineer with an office at 4882 Delta Street, Delta, B.C.
2. I am a graduate of the University of Toronto (1962) with a degree in Applied Geology (B.A.Sc.) and a graduate of Queen's University (1964) with a degree in Economic Geology (M.Sc., Eng.).
3. I have practiced my profession continuously since graduation while being employed by such companies as Noranda Exploration Co. Ltd., Quebec Cartier Mines, and Meridian Explorations Syndicate. I have been in private independant practice since 1969.
4. I have no interest, either direct or indirect in the properties or securities of Aquarius Resources Ltd., or Longbar Minerals Ltd., nor do I expect to acquire any such interest.
5. I am a member in good standing of the Association of Professional Engineers (A.P.E.) of the Province of British Columbia, and also a member of the A.P.E. in the Province of Ontario, Saskatchewan, Alberta, and the Yukon Territories.



D. R. Cochrane, P. Eng.  
September 20, 1979  
Delta, B. C.



APPENDIX II

ASSESSMENT WORK DETAILS

Personnel and Dates Worked:

Supervisor, June 18, 19, 20, 28, 29, July 3,4,5, 1979

Field Person, June 18 to 29 inclusive, and July 3,4,5, 1979

Helper, June 18 to 29 inclusive and July 3,4,5, 1979

Field Person June 18 to 29 inclusive, and July 3,4,5, 1979

Helper, June 18 to 29 inclusive, and July 3,4,5, 1979

\* J.A. Stewart, prospector and

D. R. Cochrane, P. Eng., various dates throughout project and  
report preparation

Draftspersons and typist, report preparation

\* no expense claimed

Cont'd.....



APPENDIX II (cont'd)

7495

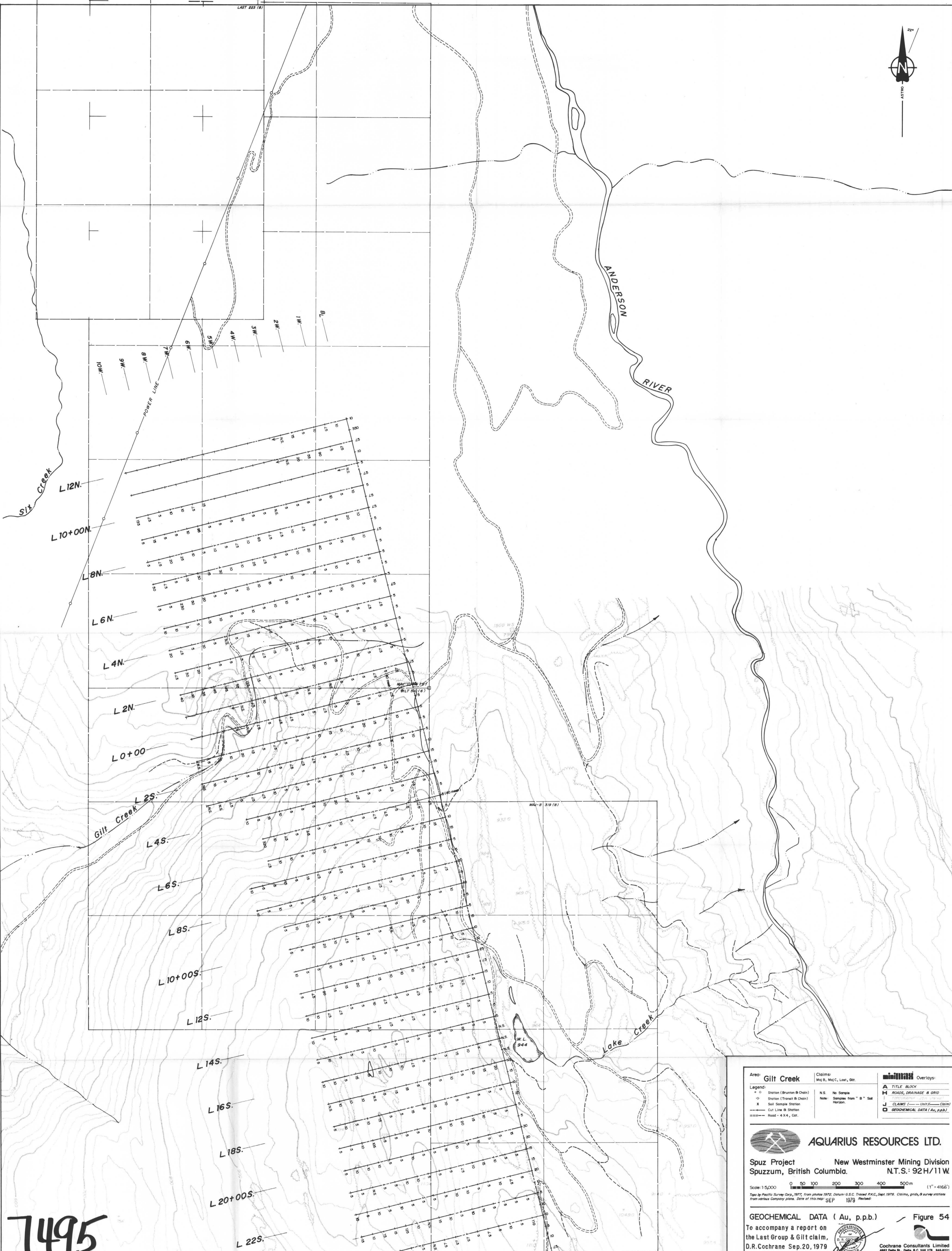
COST STATEMENT

Supervisor,	7.5 days at \$120/day .....	\$ 900.00
Field Person,	15 days at \$75/day .....	1,125.00
Helper,	15 days at \$75/day .....	1,125.00
Field Person,	15 days at \$75/day .....	1,125.00
Helper,	15 days at \$75/day .....	1,125.00
D. R. Cochrane, P. Eng.		
	1.5 days at \$250/day .....	375.00
Room and Board,	67.5 person days at \$25/person day.	1,687.50
Vehicle Expense,	2 four wheel drive vehicles	
	15 days each at \$35/day/vehicle ..	1,050.00
	1 four wheel drive vehicle	
	7.5 days at \$35/day .....	262.50
Lab Cost,	662 samples at \$4.50/sample	2,979.00
Drafting,	43 hrs at \$14.00/hr .....	602.00
Mini Max Reproduction,	.....	210.00
Sample Delivery,	.....	15.00
Typing,	5 hrs at \$10/hr .....	50.00
Report Reproduction,	.....	132.50
General Office work,		
	3.5 hrs at \$14/hr .....	49.00
		\$12,812.50
TOTAL .....		\$12,812.50

COST APPROPRIATION

To apply to Last Group .....	\$ 9,865.63
To apply to Gilt Claim .....	\$ 2,946.87





7495

Area: Gilt Creek	Claims: Maj B, Maj C, Lot, Glt.	Overlays:
Legend:	N.S. No Sample	A TITLE BLOCK
Station (Brunton & Chain)	Note: Samples from "B" Soil Horizon	H ROADS, DRAINAGE & GRID
Station (Transit & Chain)		J CLAIMS (--- Unit / --- Claim)
Soil Sample Station		K GEOCHEMICAL DATA (Au, p.p.b.)
Cur Line @ Station		
Road - 4 X 4, Ctr.		

**AQUARIUS RESOURCES LTD.**

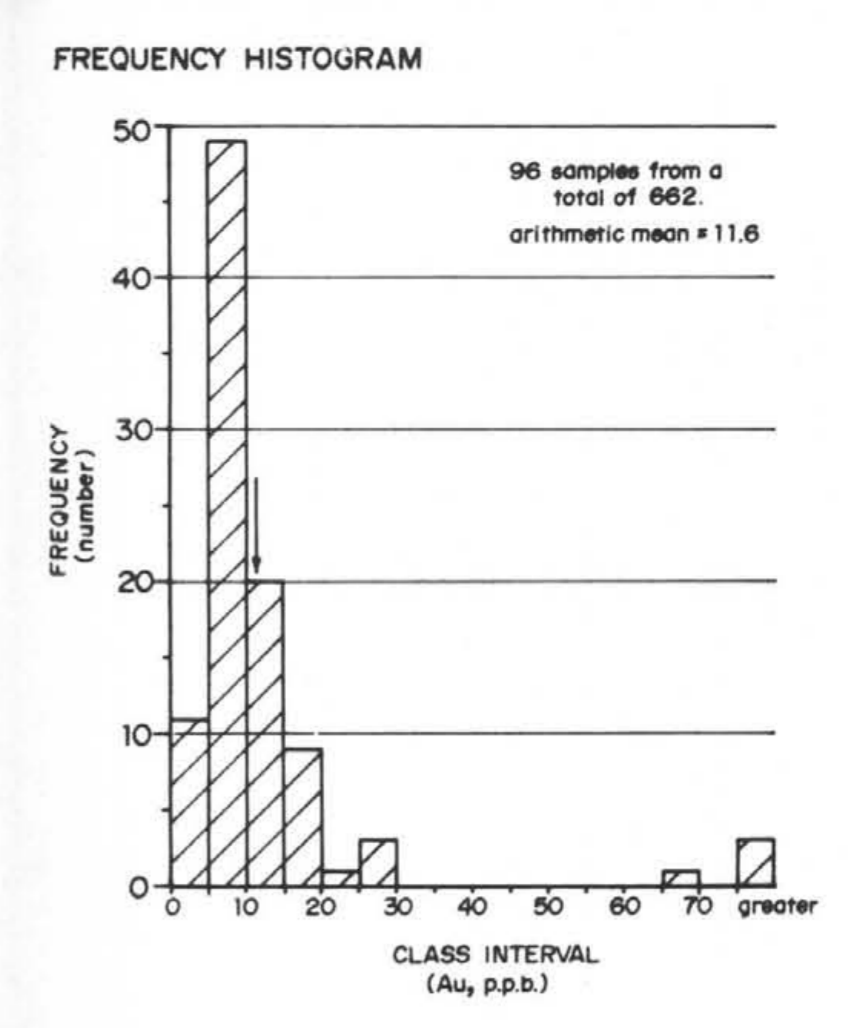
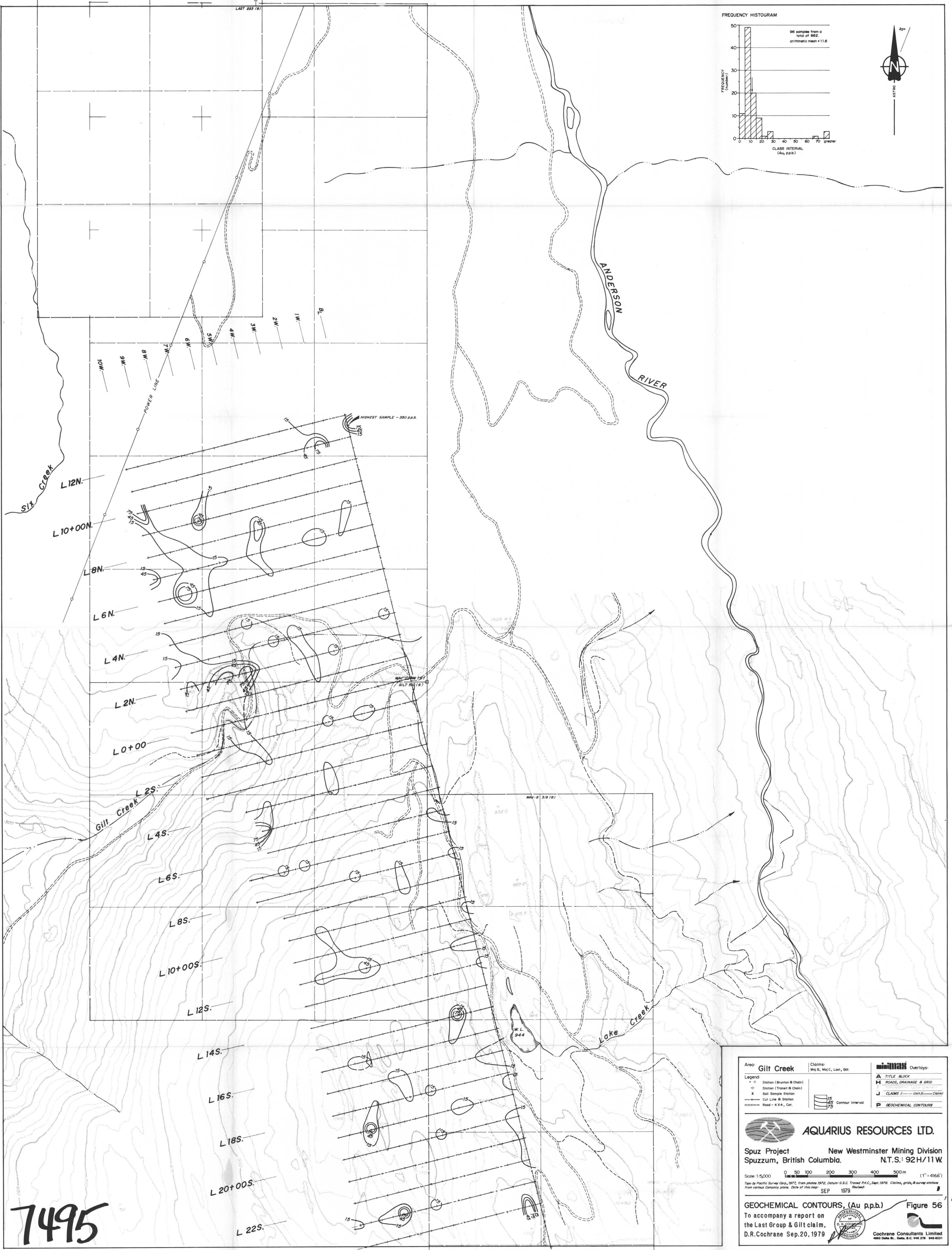
Spuz Project New Westminster Mining Division  
Spuzzum, British Columbia. N.T.S.: 92H/11W

Scale: 1:5,000 0 50 100 200 300 400 500m (1" = 4166')

Type by Pacific Survey Corp., 1977, from photos 1972. Datum: G.S.C. Traced P.K.C., Sept 1979. Claims, photo, & survey stations from various Company plans. Date of this map: SEP 1979. Revised:

GEOCHEMICAL DATA ( Au, p.p.b.) Figure 54  
To accompany a report on the Last Group & Gilt claim,  
D.R. Cochrane Sep. 20, 1979

**Cochrane Consultants Limited**  
4882 Delta St., Delta, B.C. V4K 2T8 246-0251



7495

Area: Gilt Creek	Claims: Mij, Mj, C, Lari, Gilt	Overlays:
Legend:	Station (Brunton & Chain)	TITLE BLOCK
Station (Transit & Chain)	Soil Sample Station	ROADS, DRAINAGE & GRID
Cut Line & Station	Contour Interval	CLAIMS (Unit, X, Claim)
Road - 4' x 4', Cut		GEOCHEMICAL CONTOURS

**AQUARIUS RESOURCES LTD.**

Spuzzum Project New Westminster Mining Division  
British Columbia. N.T.S.: 92H/11 W

Scale: 1:50,000 0 50 100 200 300 400 500 m (1" = 4166')

Top by Pacific Survey Corp., 1977, from photos 1972. Datum: U.S.C. Traced P.K.C., Sept. 1978. Claims, grids, & survey stations from various Company plans. Date of this map: SEP 1979.

**GEOCHEMICAL CONTOURS, (Au p.p.b.)** Figure 56  
To accompany a report on the Last Group & Gilt claim.  
D.R. Cochrane Sep. 20, 1979

Cochrane Consultants Limited  
483 Duff St. Delta, B.C. V4E 2T8 648-9231