

GEOCHEMICAL REPORT
VESTOR EXPLORATIONS LTD.
SEAFORTH MINES LTD.
PACIFIC CASSIAR LTD.

Block 1 mineral claim, Clearwater area, Kamloops
Mining Division, B. C.

Lat. $51^{\circ}36'N$ Long. $120^{\circ}02'W$ N.T.S. 92 P/9

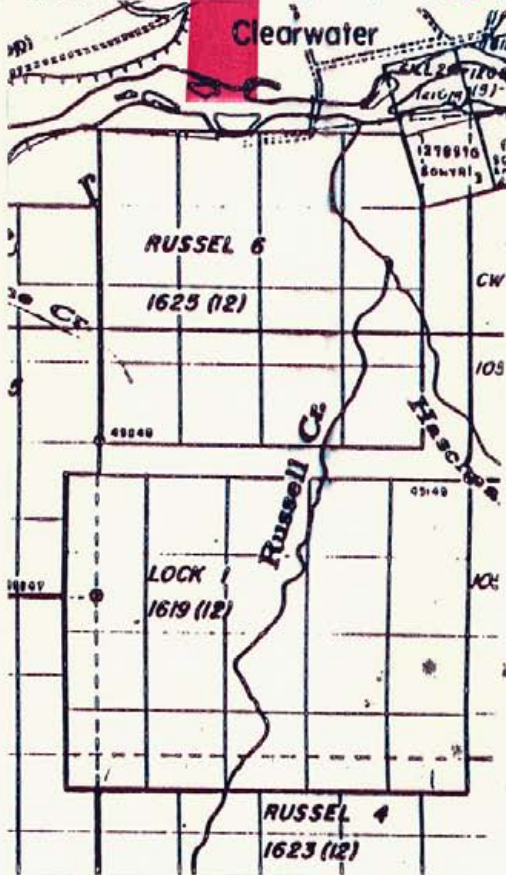
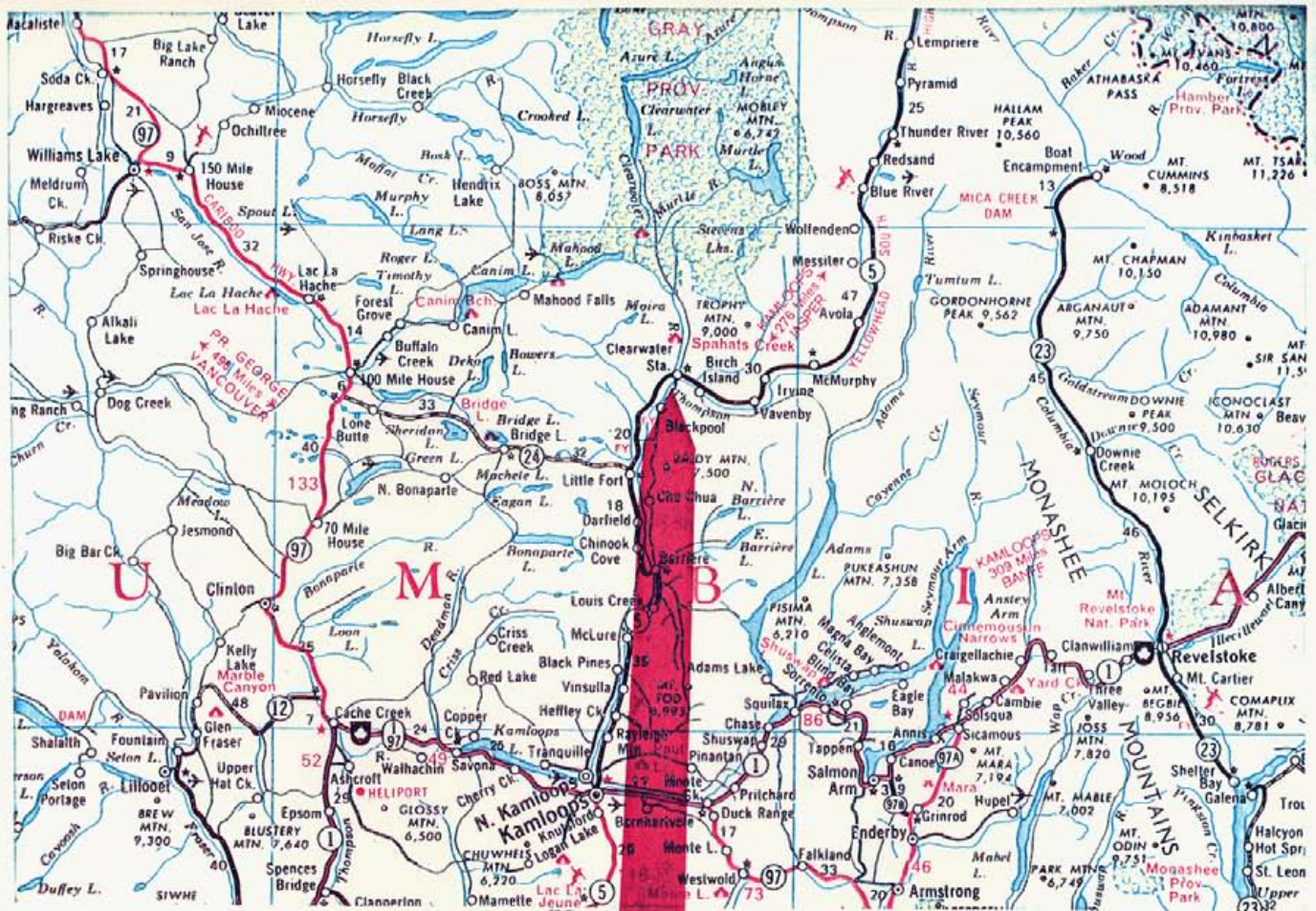
AUTHOR: Glen E. White, B.Sc., P. Eng.

DATE OF WORK: July 3 - 7, 1979

DATE OF REPORT: August 16, 1979

MINERAL RESOURCES BRANCH
ASSESSMENT REPORT

7496
NO.



LOCATION AND CLAIMS MAP

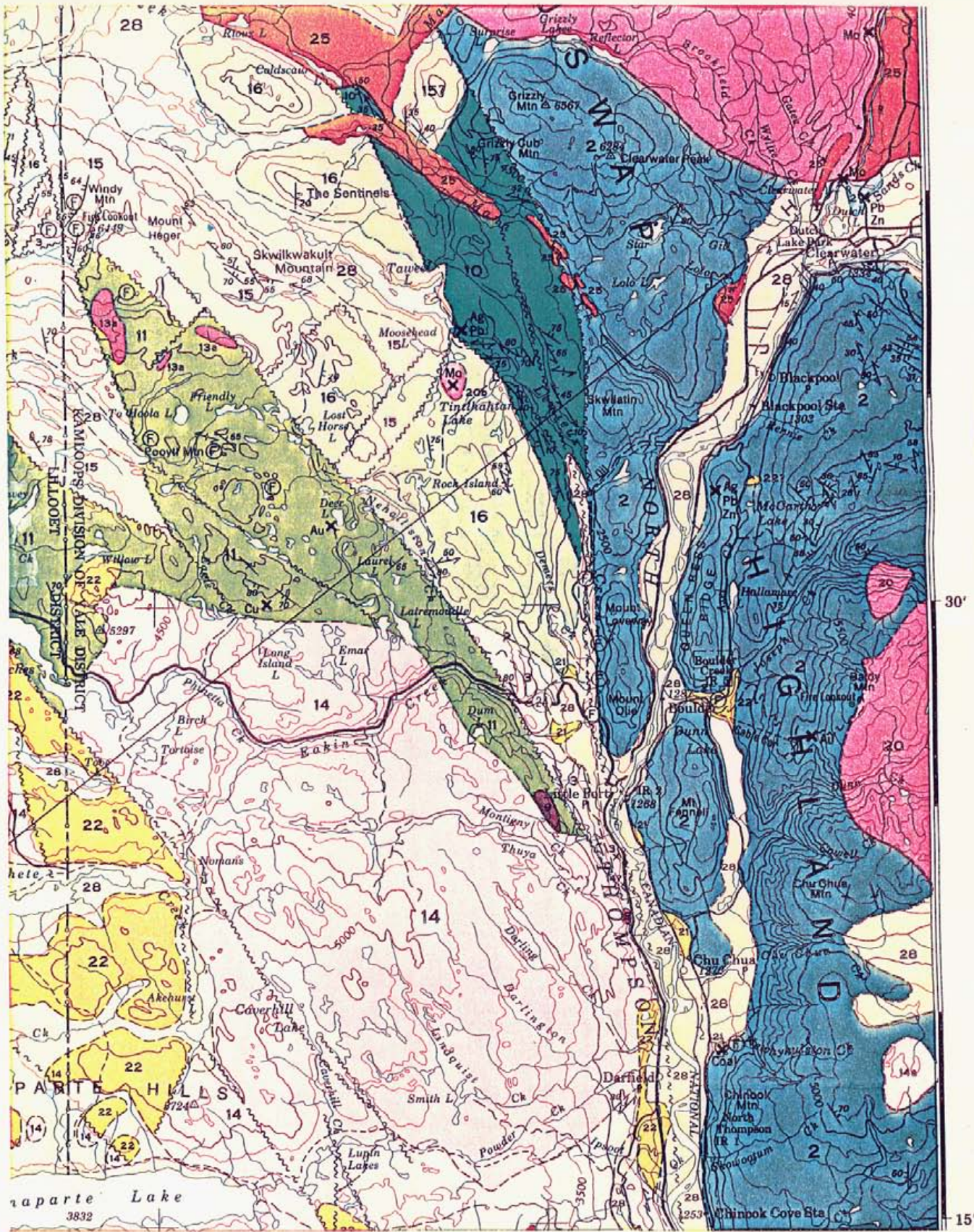
Glen C. White
 geophysical consulting
 services ltd.

C O N T E N T S

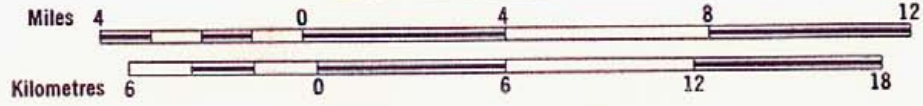
	<u>PAGE</u>
Introduction.....	1
Property.....	1
Location and Access.....	1
General Geology.....	1 - 2
Survey Specifications	
(1) Survey Grid.....	2
(2) Geochemical Survey.....	2
Discussion of Results.....	2 - 3
Conclusion and Recommendations.....	3
Statement of Qualifications.....	4
Cost Breakdown.....	5

Illustrations

- Figure 1 - Location and Claims Map
- Figure 2 - Copper Geochemical Map
- Figure 3 - Lead Geochemical Map
- Figure 4 - Zinc Geochemical Map
- Plate 1 - General Geology



MAP 1278A
GEOLOGY



Glen C. White
geophysical consulting
3
1953

INTRODUCTION

The Lock 1 mineral claim was staked by the Vestor Exploration, Seaforth Mines Ltd. and Pacific Cassiar Ltd. group to cover an area of interesting silt samples. The survey discussed in this report was conducted on their behalf by Glen E. White Geophysical Consulting & Services Ltd. to try and locate any specific areas for further follow-up.

PROPERTY

The property consists of the Lock 1 mineral claim comprising 20 units as illustrated on Figure 1.

LOCATION AND ACCESS

The mineral claim is located on Russell Creek approximately one mile due south of Clearwater, B. C. Latitude $51^{\circ}36'N$, Longitude $120^{\circ}02'W$, N.T.S. 92 P/9, Kamloops Mining Division, B. C.

Access is by logging road from Clearwater.

GENERAL GEOLOGY

The general geology of the area is shown on Map 1278A, Bonaparte Lake. The area of the property is illustrated on Plate 1. The Fennell formation covers the area of the Lock claim and consists of pillow lava flows, greenstone, foliated greenstone, greenschist, argillite, chert, minor amphibolite, limestone and breccia. This formation was studied by the Vestor, Seaforth, Pacific Cassiar group and considered to be prime rocks for a volcanogenic deposit. A subsequent stream silt sampling program detected the massive sulphide deposit on Chui Chua Mountain some 12 miles due south. This deposit occurs along an irregular rhyolite-dacite interface and may consist of several massive sulphide lenses. These lenses are in the order of some 20 m in thickness and consist

of massive pyrite, some 2% copper and minor zinc with some precious metal values.

SURVEY SPECIFICATIONS

Survey Grid

The survey grid consists of wide spaced reconnaissance soil sampling lines some 500 m apart. The lines are orientated in a N-S direction from a central E-W baseline. Some 14 km of traverse grid was laid out.

Geochemical Survey

Soil samples of the upper "B" horizon were taken along the traverse lines at 100 m intervals. The soil samples were then placed in soil envelopes provided by Chemex Labs Ltd. of North Vancouver, B. C. The samples were delivered to the above lab where -80 mesh sieving, digestion by hot perchloric/nitric acid and analysis by atomic absorption were carried out under the supervision of professional geochemists. 122 samples were obtained and analysed for p.p.m. copper, lead and zinc.

DISCUSSION OF RESULTS

The geochemical results are displayed on Figures 2 - 4. The copper values, Figure 2, show a low background value of some 15 p.p.m. copper typical of a more clay-bearing pleistocene till covered area. Thus, the first contour value of 40 p.p.m. outlines anomalous areas and the second contour, value of 80 p.p.m. gives areas of definite interest. Three such values were obtained, one on line 0 at 4N, one on the baseline at 15W, and the other at 25W - 2N. The lead geochemical data gives a background of some 8 p.p.m. with a threshold value of 15 p.p.m. The area of line 0 - 3N and 4N with 60 and 80 p.p.m. is therefore of definite interest. A value of 38 p.p.m. was detected on line 5W - 9N.

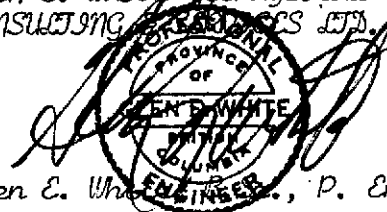
The zinc map shows the greatest variation in values from a low of 10 p.p.m. to a high of 1500 p.p.m. The northern portion of the property has some 90% of its values greater than 100 p.p.m. and the southern portion only 20%. There would therefore appear to be a difference in rock type between the two areas. The geochemical trend is generally E-W parallel to the strike and dip symbols on Plate 1. Thus, there would appear to be a zone some 600 - 700 m wide along the baseline which is of definite interest. A small outlier anomaly was also detected at 15W - 7S. The strong zinc anomaly on lines 0 and 5W is also associated with the definitely anomalous copper and lead geochemical values.

CONCLUSION AND RECOMMENDATIONS

During the early part of July 1979, a program of reconnaissance geochemical surveying was conducted over the Loch 1 mineral claim. This survey detected a pronounced E-W directed zinc geochemical trend with weaker associated anomalous values of copper and lead. This anomaly may possibly be associated with a variation in rock type and appears conformable to the trend of the regionally mapped bedding. It is recommended that this anomaly be further investigated and that the possibility of acquiring the mineral rights to the east of the mineral claim be considered.

Respectfully submitted,
 GLEN E. WHITE GEOPHYSICAL
 CONSULTING & SERVICES LTD.

Glen E. White, P. Eng.



STATEMENT OF QUALIFICATIONS

NAME: WAJTE, Glen E., P. Eng.

PROFESSION: Geophysicist

EDUCATION: B.Sc. Geophysics - Geology
University of British Columbia

PROFESSIONAL ASSOCIATIONS: Registered Professional Engineer,
Province of British Columbia

Associate member of Society of Exploration Geophysicists.

Past President of B. C. Society of Mining Geophysicists.

EXPERIENCE: Pre-Graduate experience in Geology - Geochemistry - Geophysics with Anaconda American Brass.

Two years Mining Geophysicist with Sulmac Exploration Ltd. and Airborne Geophysics with Spartan Air Services Ltd.

One year Mining Geophysicist and Technical Sales Manager in the Pacific north-west for W. P. McGill and Associates.

Two years Mining Geophysicist and supervisor Airborne and Ground Geophysical Divisions with Geo-X Surveys Ltd.

Two years Chief Geophysicist Tri-Con Exploration Surveys Ltd.

Eight years Consulting Geophysicist.

Active experience in all Geologic provinces of Canada.

COST BREAKDOWN

<u>Personnel</u>	<u>Dates</u>	<u>Wages</u>	<u>Total</u>
B. Booth.....	July 3-7/79.....	\$120/day.....	\$600.00
J. Owens.....	"....."	95/day.....	475.00
Meals and Accomodations.....		@\$35/m/day.....	350.00
Vehicle 4x4 plus gas & insurance @ \$60/day.....			300.00
Materials.....			66.00
Geochemical analysis 122 x \$3.25.....			396.00
Drafting, interpretation and reports.....			750.00
		<u>Total.....</u>	<u>\$2937.00</u>

120°02'

25 W

20 W

15 W

10 W

5 W

0

10+00N—

L.C.P. - RUSSEL

L.C.P. LOCK

8+00N—

6+00N—

4+00N—

2+00N—

0+00—BASE LINE

2+00S—

4+00S—

6+00S—

8+00S—

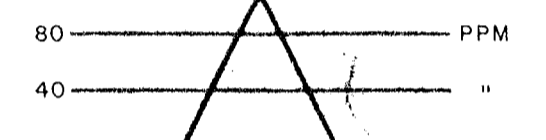
10+00S—

LEGEND

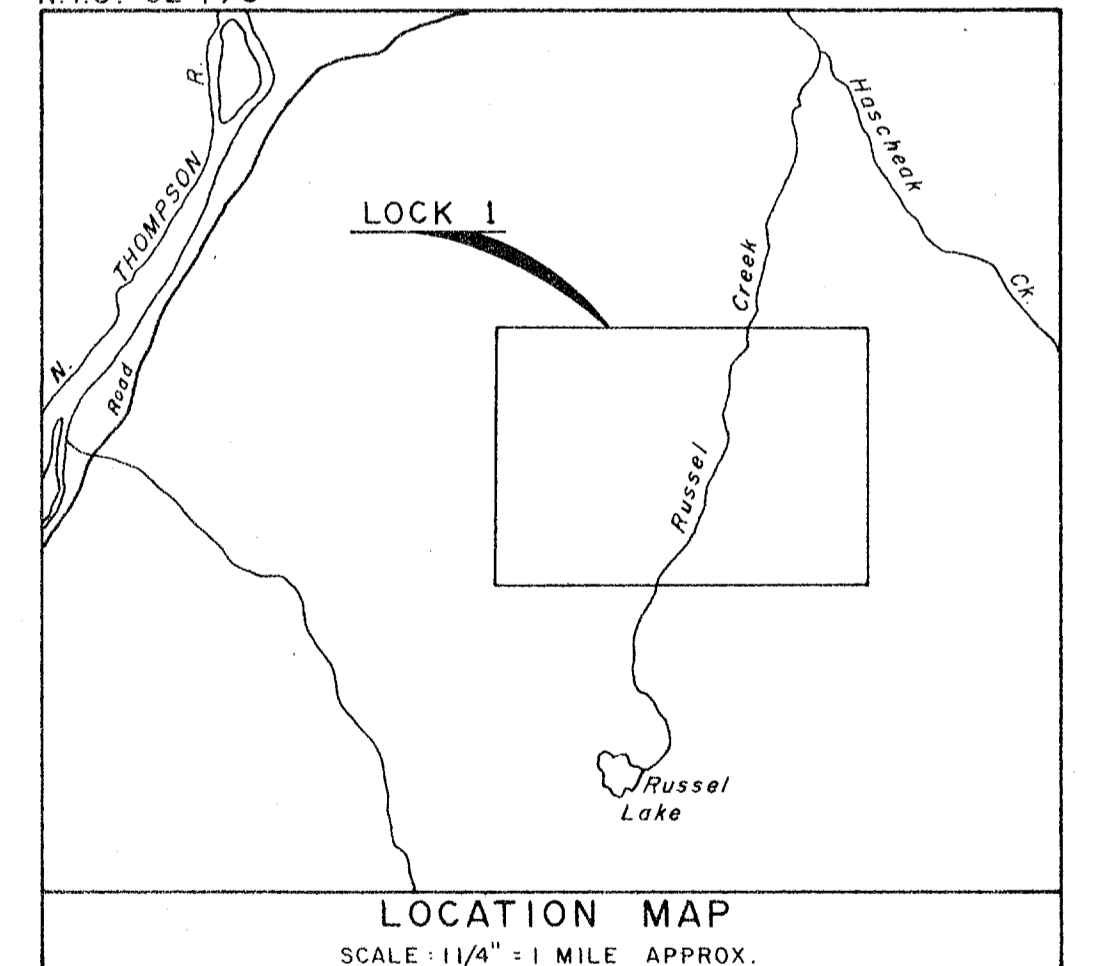
CONTOUR INTERVAL : 40,80 PPM

MINERAL RESOURCES BRANCH
ASSESSMENT REPORT
7496
NO.

COPPER KEY



N.T.S. 92 P/9



LOCATION MAP
SCALE : 1 1/4" = 1 MILE APPROX.



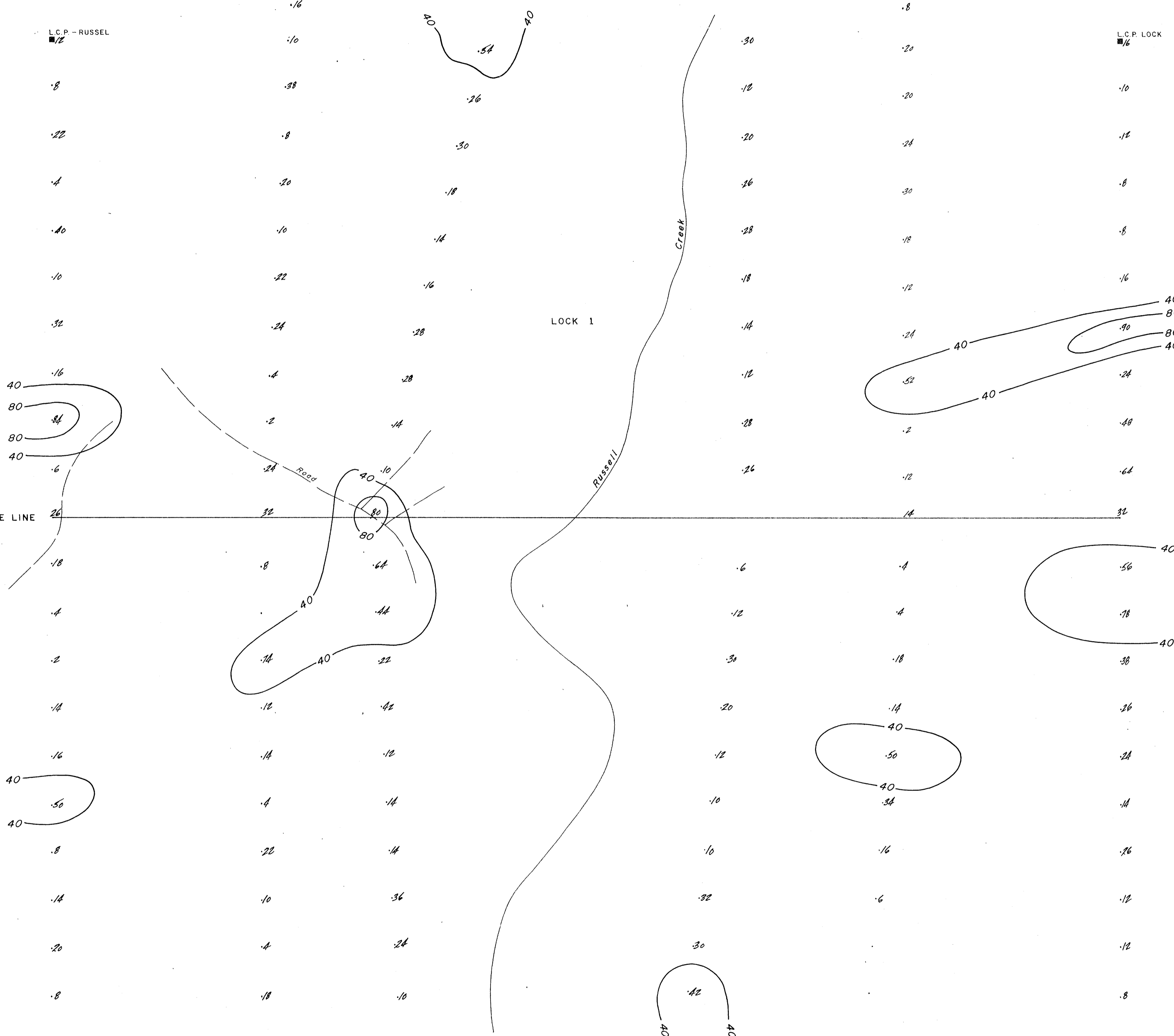
VESTOR EXPLORATIONS LTD.
SEAFORTH MINES LTD.
PACIFIC CASSIAR LTD.
— LOCK 1 CLAIM —
KAMLOOPS MINING DIVISION — BRITISH COLUMBIA

GEOCHEMICAL MAP
COPPER PPM

Glen E. White
geophysical consulting
services Ltd.

INTERPRETED BY: G.E.W.
DRAWN BY: T.M.
CHECKED BY:
DATE: JULY, 1979
FIG No.: 2

To Accompany Geochemical
THE LOCK 1 CLAIM
Date *Aug 14, 79*
By GLEN E. WHITE



120°02'

25 W

20 W

15 W

10 W

5 W

0

10+00N—

8+00N—

6+00N—

4+00N—

2+00N—

0+00—BASE LINE

2+00S—

4+00S—

6+00S—

8+00S—

10+00S—

L.C.P. - RUSSEL

L.C.P. LOCK

LOCK 1

Creek

Russell

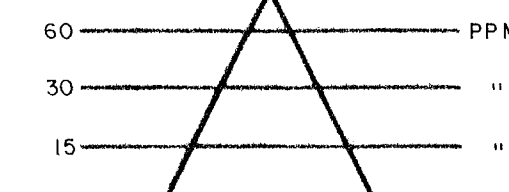
ROAD

LEGEND

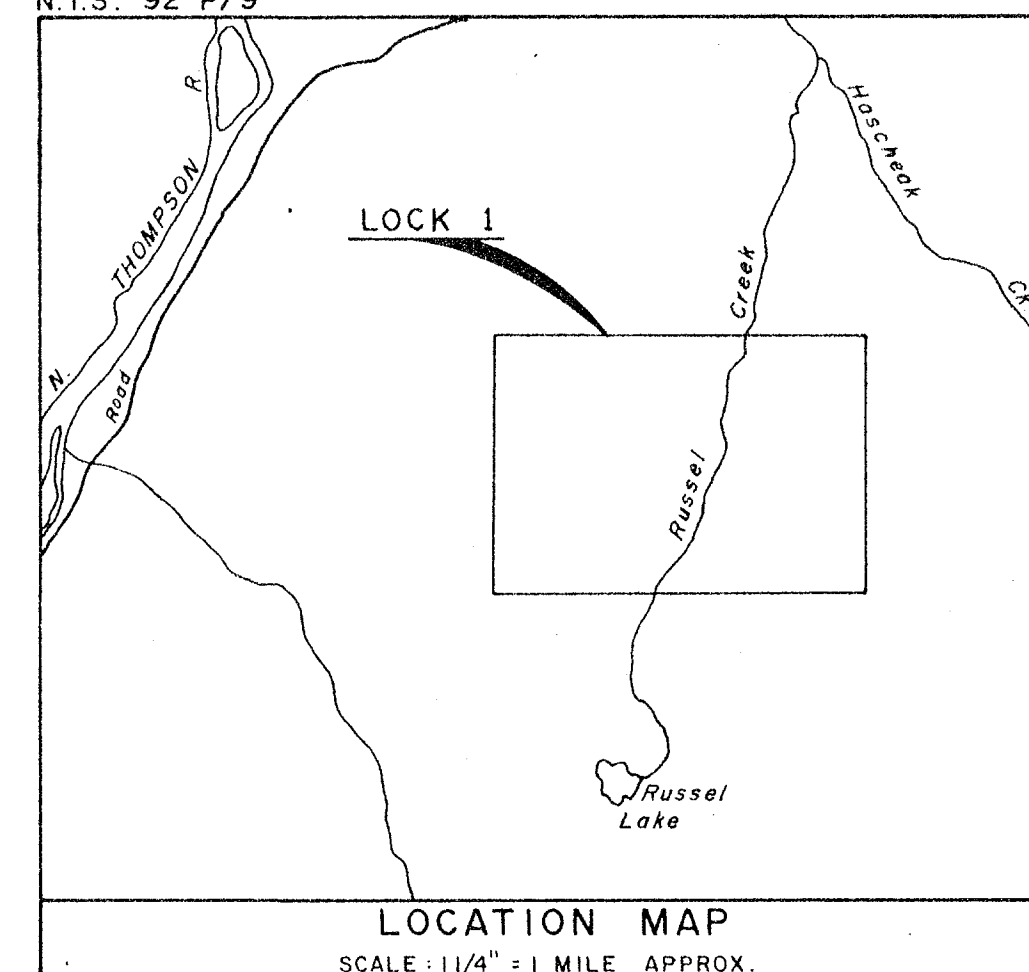
CONTOUR INTERVAL : 15,30,60 PPM

MINERAL RESOURCES BRANCH
ASSESSMENT REPORT
7496
NO.

LEAD KEY



N.T.S: 92 P/9



LOCATION MAP

SCALE: 1/4" = 1 MILE APPROX.



VESTOR EXPLORATIONS LTD.
SEAFORTH MINES LTD.
PACIFIC CASSIAR LTD.
—LOCK 1 CLAIM—
KAMLOOPS MINING DIVISION - BRITISH COLUMBIA

GEOCHEMICAL MAP
LEAD PPM

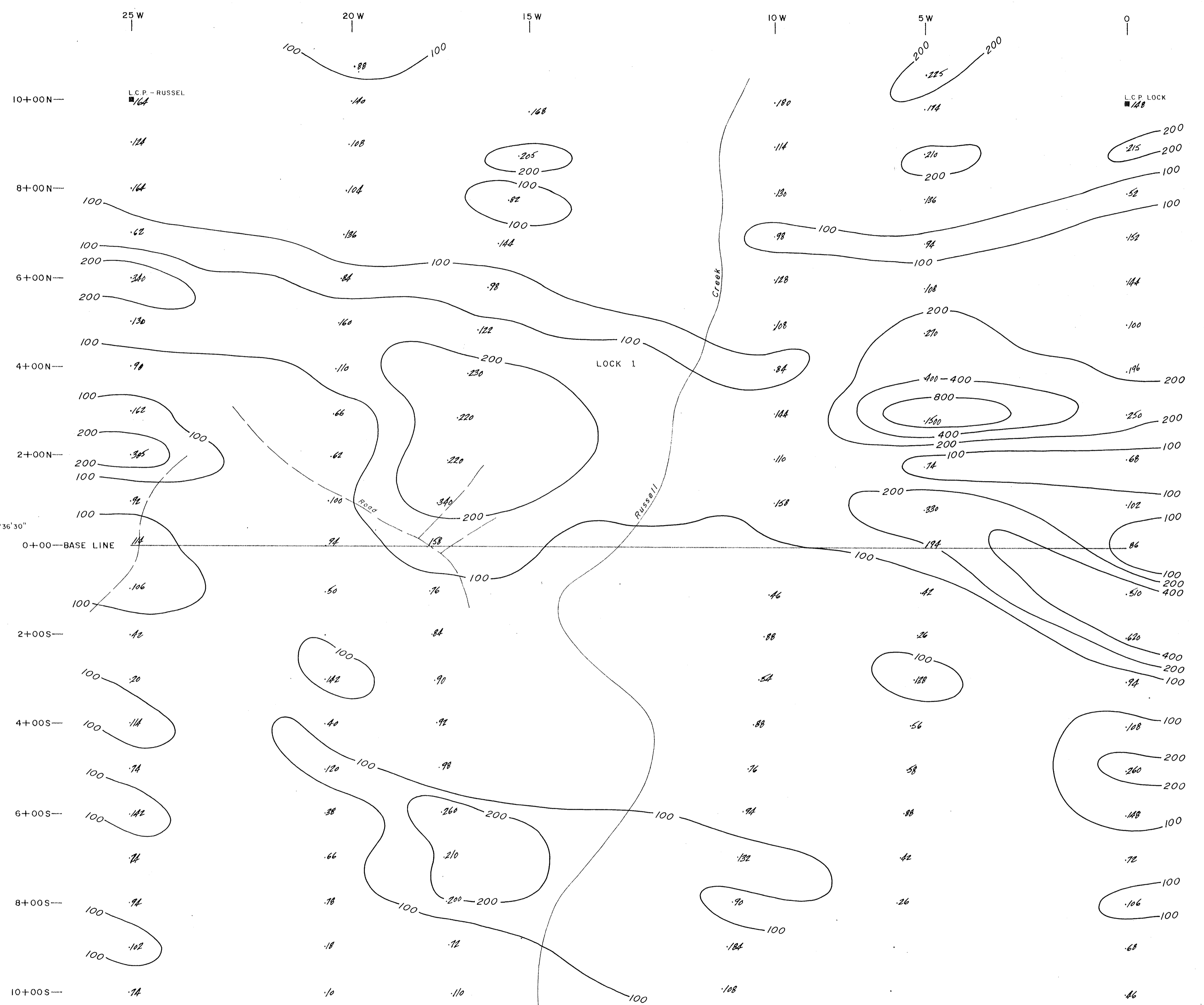
Glen E. White
geophysical consulting
services Ltd.

INTERPRETED BY: G.E.W.
DRAWN BY: T.M.
CHECKED BY:
DATE: JULY, 1979
FIG. No.: 3

To Accompany Geochemic
THE LOCK 1 CLAIM
Date: 12-7-1979
By: GLEN E. WHITE - B.Sc.

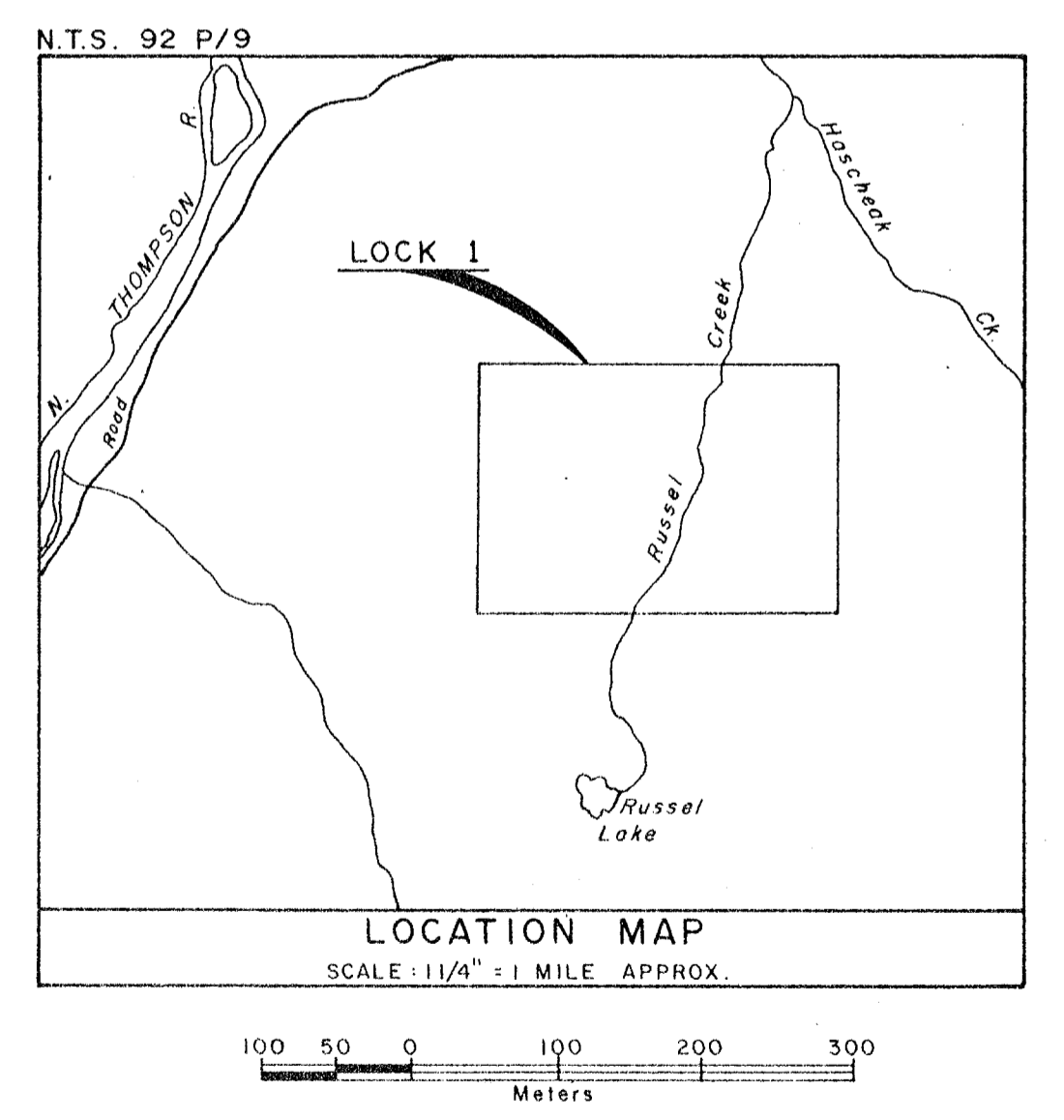


120°02'



LEGEND
 CONTOUR INTERVAL : 100,200,400,800 PPM

MINERAL RESOURCES BRANCH
 ASSESSMENT REPORT
7496
 NO.



VESTOR EXPLORATIONS LTD.
 SEAFORTH MINES LTD.
 PACIFIC CASSIAR LTD.
 - LOCK 1 CLAIM -
 KAMLOOPS MINING DIVISION - BRITISH COLUMBIA

GEOCHEMICAL MAP
ZINC PPM

Glen E. White geophysical consulting services Ltd.	INTERPRETED BY : G.E.W.
	DRAWN BY : T.M.
	CHECKED BY :
	DATE : JULY, 1979
	FIG. No : 4

For Accompany Geochemical
 THE LOCK 1 CLAIM
 Date: *Aug 14 1979*
 By GLEN E WHITE