

REPORT on the
LINE GRID LOCATION

on

SIWASH SILVER MINERAL PROPERTY

Located in the Similkameen Mining District

N.T.S. 92H/16W
Lat. $49^{\circ} 47'$ Long. $120^{\circ} 20'$

by

Del W. Ferguson

BRENDA MINES LTD.
EXPLORATION GROUP

October, 1979

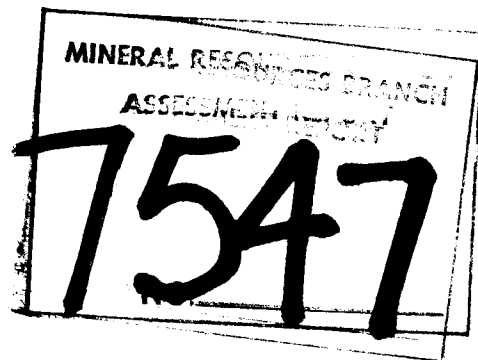


TABLE of CONTENTS

	Page
Chapter One	
<u>INTRODUCTION</u>	
1-1 Location and Accessibility	1
1-2 Topography and Vegetation	1
1-3 Property Definition	3,4
1-4 Claim Statistics	5
1-5 Summary of Work Done, 1979	5
1-6 Grid Establishment	7
Reference	8

APPENDIX I

STATEMENT of QUALIFICATIONS

APPENDIX II

STATEMENT of COSTS

LIST of FIGURES

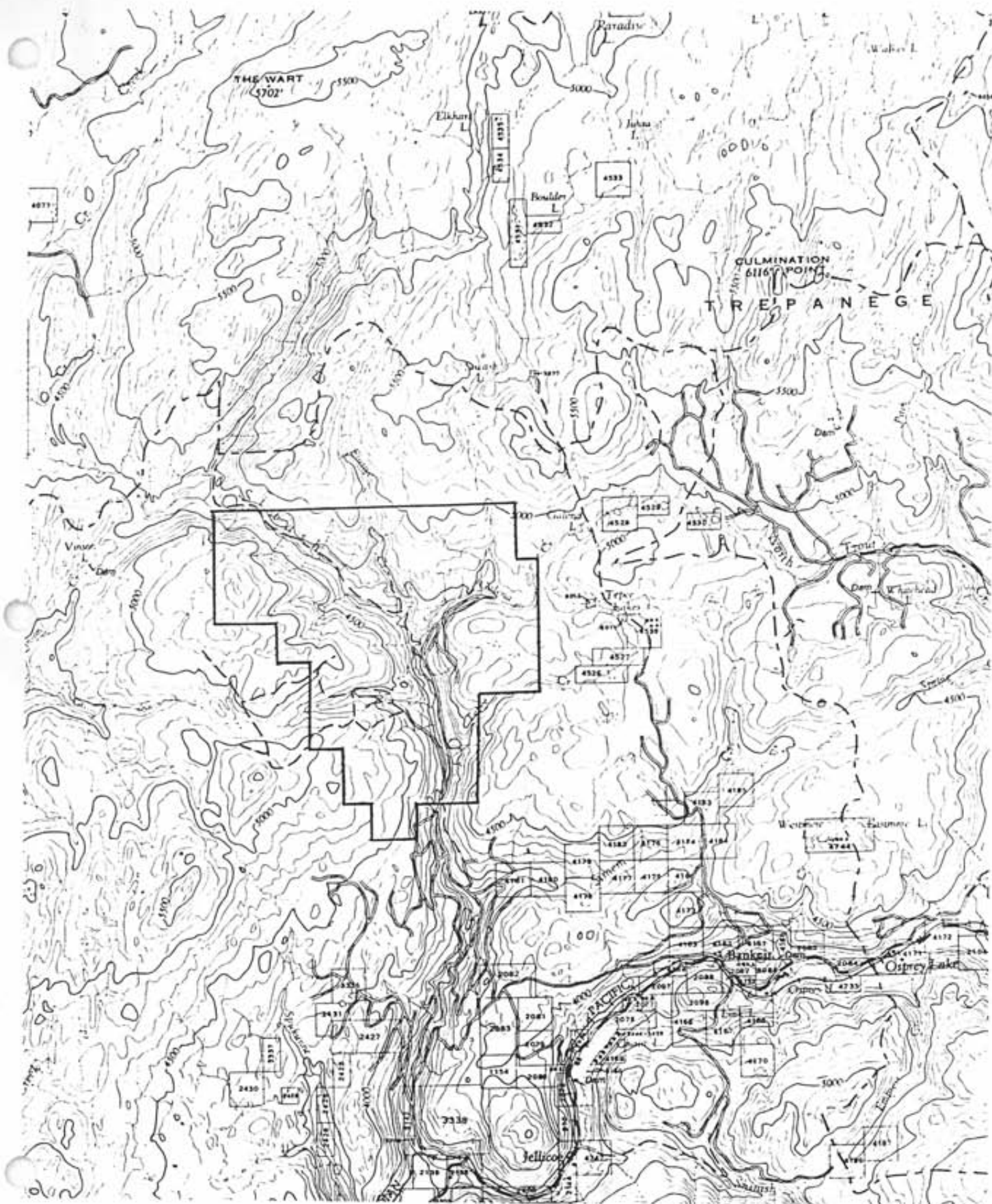
Figure 1 - Location Map	2
Figure 2 - Claim Map	6
Figure 3 - Grid Establishment Map (blow up in pocket)	

1-1 Location and Accessibility

The Siwash Silver Property is located 38 kilometres by air, northeast of Princeton, B.C. The claims are situated along Siwash Creek, west of Teepee Lakes and east of Vinson Lake. Access to the property is via an 8 kilometre forestry access road which branches off of the Summerland - Princeton road north of Osprey Lake.

1-2 Topography and Vegetation

The property occupies the deep, narrow, terraced north-south trending Siwash Creek valley and its surrounding plateau lands. Major tributaries occupy the deep valleys of Teepee, Gavin and Galena, entering Siwash Creek from the east and Saskat Creek flowing in from the west. Vegetation consists generally of well-spaced stands of jackpine, fir and spruce with a lush grassy undergrowth. Some of the more immature forests consist of tight growths of young scrawny jackpine. Taigalders flourish in swampy areas within the plateau and along steep valley sides.



LOCATION MAP - FIGURE 1

1-3 Property Definition

The Siwash Silver Property is underlain predominantly by quartz monzonites, granites and quartz-feldspar porphyries of the Otter Intrusions (Rice, 1960). Quartz veins, altered siliceous zones and tiny veinlets carry most of the surface mineralization, most often following fractures within the Otter intrusions. These fractures, veins and zones are mineralized with pyrite, specular hematite, sphalerite, galena, chalcopyrite, tetrahedrite and bornite. Disseminated mineralization of pyrite and arsenopyrite has been noted in several areas.

The area has been well prospected since the early 1900's. Several adits have been driven into rock faces along the banks of Siwash and Gavin Creeks. Hand trenches following mineralized leads are also numerous throughout the valley. Evidence of old placer workings is apparent along banks of Siwash Creek.

Old mineral workings include the Mabel Claim, a short distance above the junction of Siwash and Teepee Creeks. This showing consists of strongly mineralized shear zones in a highly chloritized granite. The principal metallic mineral is specular hematite, but pyrite, chalcopyrite, tetrahedrite, sphalerite and galena are also present. Relatively high silver values have been found in conjunction with large patches of specular hematite.

The old workings of the Iron Duke and Fisher Maiden Claims exhibit similar lithologies and mineralization to the Mabel. The Fisher Maiden adit follows a siliceous lead containing high grade galena and chalcopyrite. The Claremont group, about 1.5 kilometres north of Teepee Creek and the Renfrew group, approximately 2.4 kilometres north of Teepee Creek occur within the pyritized quartz-eye monzonites of the Otter Intrusions. Mineralization of galena, sphalerite, chalcopyrite and bornite have been found in shear zones and quartz veins trending northeasterly through these rocks.

More recent work achieved on the Siwash Silver Property in the form of trenching and blast holes was executed by E. Mullin of Princeton, B.C. and D.E. Agur of Summerland, B.C. The holdings of these persons were optioned to Brenda Mines Ltd. in April, 1979.

1-4 Claim Statistics

<u>Claim Name</u>	<u>Record No.</u>	<u>Units</u>	<u>Record Date</u>
V.M. # 1	445	1	Oct. 5/78
V.M. # 2	446	1	Oct. 5/78
V.M. # 3	447	1	Oct. 5/78
V.M. # 4	448	1	Oct. 5/78
Hawk	673	6	Jul. 26/79
Jean # 1	671	1	Jul. 26/79
Jean # 2	672	1	Jul. 26/79
Ed # 2	172	2	Nov. 23/76

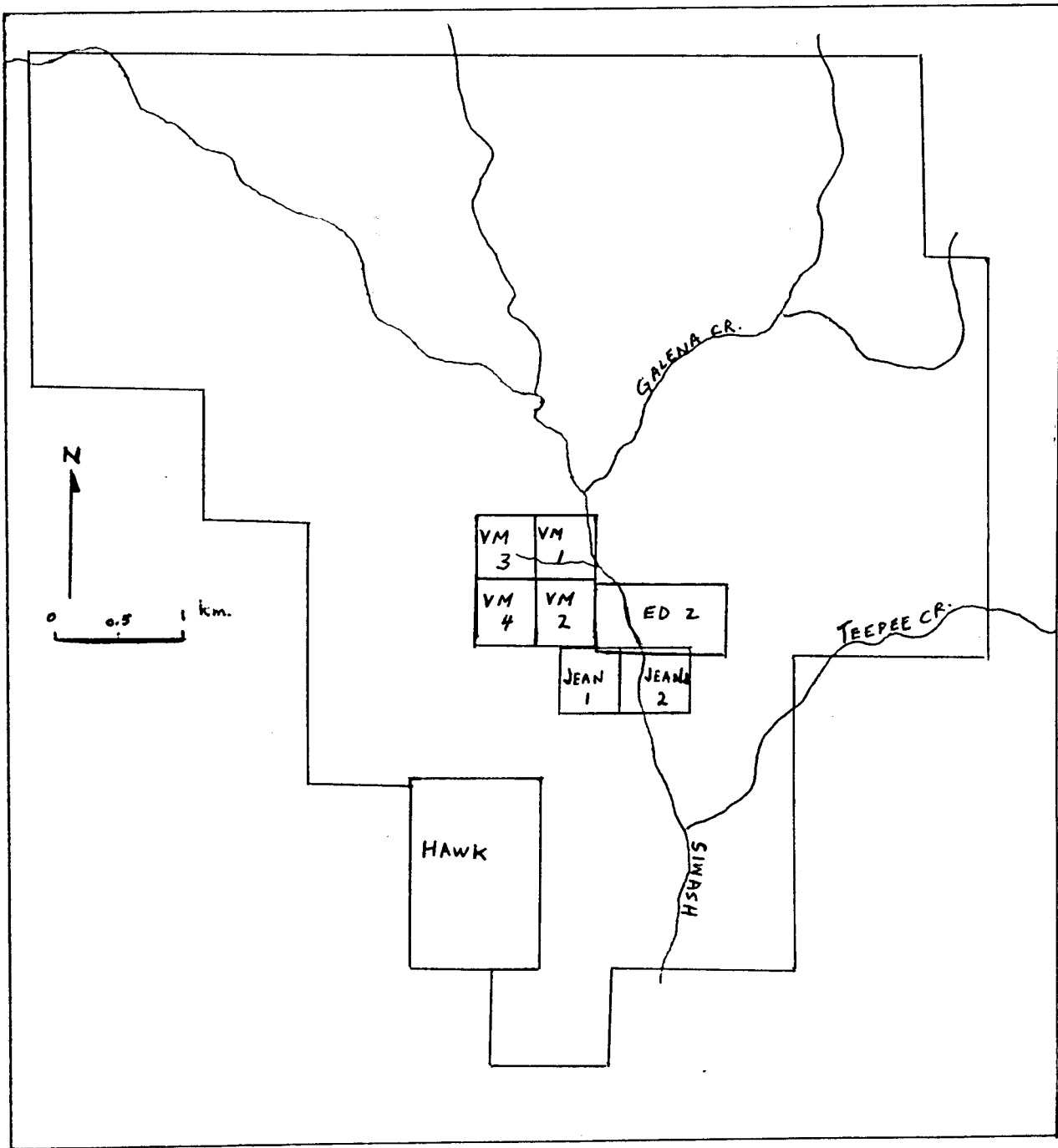
All claims are located in the Similkameen Mining District.

1-5 Summary of Work Done, 1979

Work was performed on the property from June 19, 1979
to June 27, 1979.

Crew members were:

Arnold Pollmer	- Chief Geologist
Del W. Ferguson	- Exploration Geologist
Paul C. Bankes	- Exploration Geologist
Ralph Allen	- Field Technician
Tim Henneberry	- Student
Tim Charman	- Student
Norm Bussolaro	- Student
Graham Davidson	- Student
Herb McAleenan	- Student



CLAIM MAP - FIGURE 2

1-6 Grid Establishment

A 2.4 kilometre picket base line trending N 30° W was cut across the central portion of the property, west of Siwash Creek. Location lines spaced at 100 metre intervals were cut and flagged, running perpendicular to this base line. A mini-grid trending the same direction was established at the south end of this grid from 2.4 km. south and 300 metres west to 2.8 km. south and 300 metres west. A second picket base line trending N 60° E was cut from the north end of the primary baseline, easterly across Siwash Creek for a distance of 2.4 kilometres. On the east side of Siwash Creek, location lines were run perpendicular to this baseline in a north and south direction at 200 metre intervals. To the west of Siwash Creek, location lines were established at 200 metre intervals on the north side of the second baseline. All lines were well flagged and blazed, surveyed with a compass and topofil, and marked at 50 metre stations for later geological, geochemical and geophysical surveys. The grid was established on a bearing of N 30° W in order to run later surveys perpendicular to observed geological structures.

Reference:

Rice, H.M.A. (1960), Geology and Mineral Deposits of the
Princeton Map-Area, British Columbia,
Geol. Surv. Can., Memoir 243.

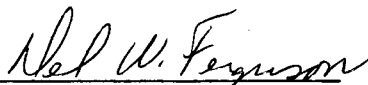
APPENDIX I

STATEMENT OF QUALIFICATIONS

STATEMENT OF QUALIFICATIONS

I, Delbert W. Ferguson of Peachland, Province of British Columbia, do certify that:

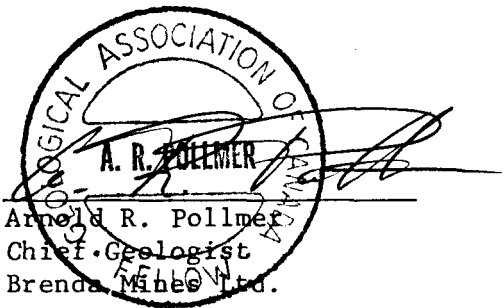
- 1) I am presently employed as an exploration geologist by Brenda Mines Ltd.
- 2) I am a graduate of the University of Western Ontario with an Honours Bachelor of Science Degree in Geology (1979)


Delbert W. Ferguson
Delbert W. Ferguson
Exploration Geologist
Brenda Mines Ltd.

STATEMENT of QUALIFICATIONS

I, Arnold R. Pollmer of Peachland, Province of British Columbia,
do certify that:

- 1) I have been employed as a geologist by Noranda Mines Limited from December 1973 to June 1977; I am presently employed as the chief geologist by Brenda Mines Ltd.
- 2) I am a graduate of the University of Wisconsin with a Bachelor of Science Degree in Geology (1972).
- 3) I am a member of the Canadian Institute of Mining and Metallurgy.
- 4) I am a fellow of the Geological Association of Canada.

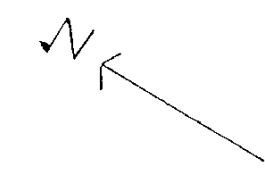

A. R. POLLMER
Arnold R. Pollmer
Chief Geologist
Brenda Mines Ltd.
FELLOW

APPENDIX II

STATEMENT OF COSTS

STATEMENT OF COSTS

1)	<u>Line Cutting</u>	
	June 19 - 27, 1979; nine days;	
	83.6 line kilometres at \$17.27/line kilometres	\$1,351.98
2)	<u>Food Expenses</u>	
	June 19 - 27, 1979; nine days;	
	\$203.00/day for an 8 man line cutting crew	1,827.28
3)	<u>Transportation</u>	
a)	Truck Rental (3 vehicles)	
	June 19 - 27, 1979; nine days;	
	\$47.59/day	428.33
b)	Fuel Costs	
	June 19 - 27, 1979; nine days;	
	\$23.14/day	208.26
c)	Vehicle Repair	171.15
4)	<u>Preparation of Report</u>	<u>50.00</u>
	TOTAL COST	<u>\$4,037.00</u>



2400 E
2200 E
2000 E
1800 E
1600 E
1400 E
1200 E
1000 E
800 E
600 E
400 E
200 E
00
200 W
400 W
600 W
800 W
1000 W



00E 200 S 400 S 600 S 800 S 1000 S 1200 S 1400 S 1600 S 1800 S 2000 S 2200 S 2400 S 2600 S 2800 S

MINERAL RESOURCES BRANCH
7547
NO.

BRENDA MINES LTD.	
Design	SIWASH SILVER
Drawn	GRID MAP & CLAIM LOCATION
Check	
Approv.	SCALE: 1: 7500 (1/25m) DWG. No.

Rev. No. Revision