

COMINCO LTD.

SULLIVAN MINE

KIMBERLEY, B.C.

TIMID, WAX and CARP C.G.M.C. GROUPS
ASSESSMENT REPORT

(THIS ASSESSMENT WORK WAS DONE ON A PRODUCING PROPERTY)

The following report describes the results of drilling a 1596 metre diamond drill hole in the Kimberley area. This hole was drilled on the TIMID, WAX, and CARP Crown granted mineral claims located in the Fort Steele Mining Division.

The N.T.S. Location is 82 F/9E

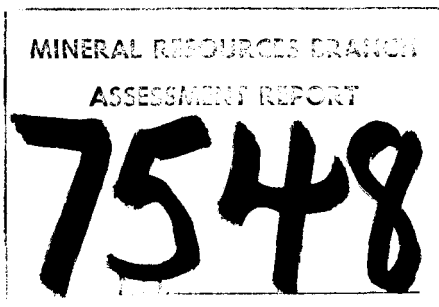
Latitude 49° 44' North

Longitude 116° 5.5' West

Cominco Ltd., owner of the claims, was the operator of the exploration program.

P.W. Ransom is author of this report.

Date of Submission: October 1979



Endorsed for
Release by :

A handwritten signature in black ink, appearing to read "John Hamilton".

J.M. Hamilton, P. Eng.
Chief Geologist, Kimberley

COMINCO LTD.

SULLIVAN MINE

KIMBERLEY, B.C.

TIMID, WAX and CARP C.G.M.C. GROUPS
ASSESSMENT REPORT

	<u>TABLE OF CONTENTS</u>	<u>PAGE</u>
1.	Introduction	1
2.	Detailed Technical Data and Interpretation	2
3.	Author's Qualifications	4
4.	Index and Location Maps	5, 6
5.	Diamond Drill Log	7-14
6.	Itemized Cost Statement and Contract Invoices	15

i) Specific Location

Exploration diamond drill hole number 6434 is located 8 km north-west of the collar of the Sullivan Mine 3900 level tunnel. An index map showing the location of the exploration hole is attached (Figure 1).

ii) Property Definition

The property being investigated forms part of the producing Sullivan Mine claim group, owned by Cominco Ltd. Cominco Ltd. has been operating the mine for about 71 years. The Sullivan orebody is one of the largest base metal deposits in British Columbia and it has contributed a major proportion of the mineral wealth generated in the province.

iii) Summary

This report describes the results of a diamond drill hole which cored ground on the TIMID, WAX, and CARP Crown granted mineral claims. Separate assessment groups originate from each of these claims, however, the results are included in a single technical report.

The drilling proceeded as follows:

SW casing was set in overburden to 7.32 m. HW casing was set in weathered bedrock to 8.85 m. The hole was cored using H wireline tools 9.6 cm in diameter yielding core 6.4 cm in diameter from 8.85 m to 625.5 m, N wireline tools 7.6 cm in diameter yielding core 4.8 cm in diameter from 625.5 m to 1264.5 m, and B wireline tools 6.0 cm in diameter yielding core 3.7 cm in diameter from 1264.5 m to 1596 m.

iv) Claims Worked On

D.D.H. 6434 was collared at a dip of -69.3° on a bearing of $S 43^{\circ} 15' W$ on the TIMID C.G.M.C.

Drilling advanced from: 0 - 244 m on the TIMID C.G.M.C. and
 244 - 1518 m on the WAX C.G.M.C. and
 1518 - 1596 m on the CARP C.G.M.C.

A plan showing the horizontal projection of the hole and claims involved is attached (Figure 2).

i) Purpose

The purpose of D.D.H. 6434 was to test stratigraphy north-west of the Sullivan Mine.

ii) Results

The core recovered from D.D.H. 6434 consists of sediments from 8.85 m to 368 m, gabbro from 368 m to 487 m, and sediments from 487 to 1596 m. The core is intensely weathered and broken to 190 m. The sediments vary from wacke and quartzitic wacke in zones 3 to 20 m thick to subwacke and wacke in zones 1 to 10 m thick. Argillite is common at bed tops throughout. Bed thicknesses are quite variable; in general they are medium to thick where the sediments are wacke and quartzitic wacke and are thin to medium, occasionally thick, where the sediments are subwacke and wacke. Laminated sub wacke and argillite occur sporadically throughout the hole and are dominant with attendant scattered pyrrhotite from 1493 m to the end. Bedding is nearly parallel to the long axis of core in the last 75 m of the hole.

iii) Interpretation

The core from 0-1596 metres consists of highly indurated sands, silts and muds representing typical turbidites and inter-turbidite material characteristic of the Aldridge Formation. The meta-gabbro from 368-487 m is a typical Moyie intrusive also characteristic of the Aldridge Formation. Proximity to a major fault is indicated by the disturbed bedding in the last 75 m. Possibly the western projection of the Kimberley Fault (well known in Sullivan workings), or a fault subsidiary to the Kimberley Fault, is present near the bottom of this hole. However, rocks in and immediately adjacent to the Kimberley Fault, where exposed in workings and drill holes near the Sullivan, are moderately to intensely chloritized. Core from the bottom of this hole lacks anomalously intense chloritization.

The core recovered from D.D.H. 6434 is typical of the rocks of Aldridge Formation. No mineralization of economic interest was found.

As author of this report, I, Paul W. Ransom certify that:

I am a geologist active in minerals exploration.

I am a graduate of McGill University with a degree of Bachelor of Science.

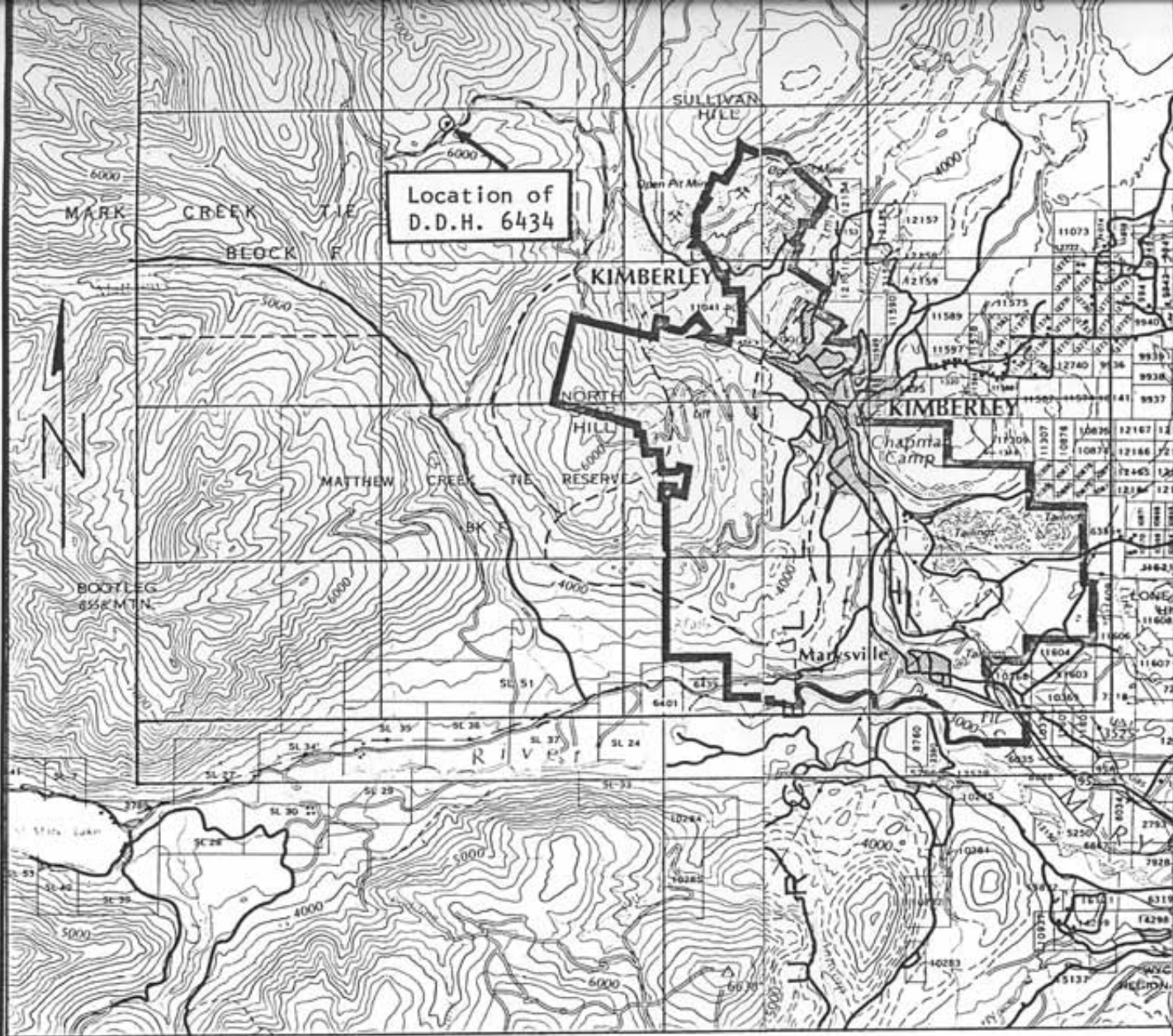
I have been continuously engaged in mining and exploration geology for twelve years.

I am a member of the Geological Association of Canada.

I supervised Cominco Ltd.'s Sullivan Mine area exploration drilling program in 1979.

The image shows a handwritten signature in cursive that reads "P.W. Ransom". To the right of the signature is a circular stamp. The stamp contains the text "GEOLOGICAL ASSOCIATION OF CANADA" around the perimeter and "PAUL W. RANSOM" in the center.

P.W. Ransom, G.A.C.



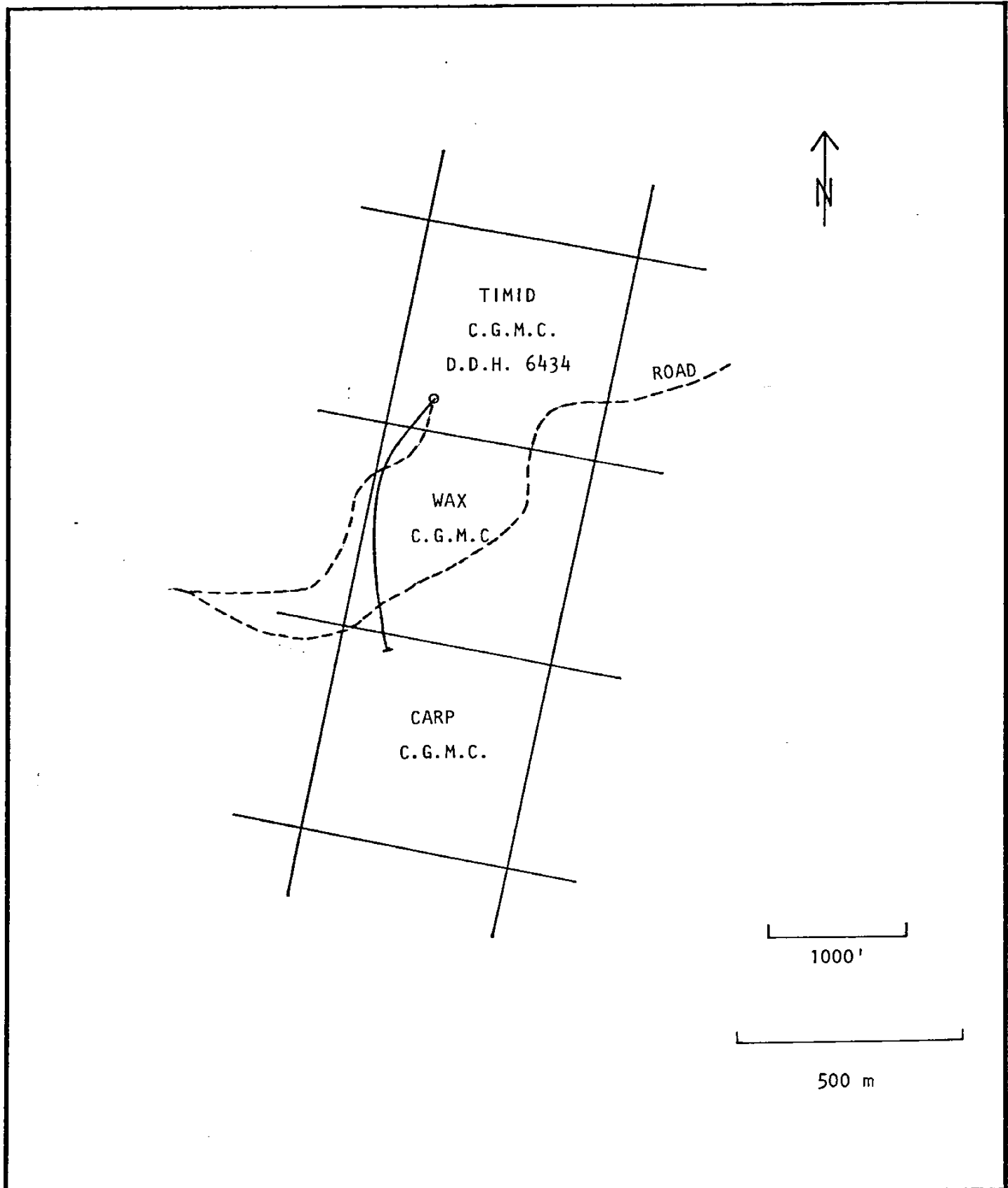
0 5 km

SULLIVAN MINE KIMBERLEY, B.C.



Iss'd To:	Date:

<p>INDEX MAP</p> <p>LOCATION OF D.D.H. 6434</p> <p>NTS 82 F/NE</p>			
<p>Drawn by: PWR</p>	<p>Scale: 1:125,000</p>	<p>Date: October 1979</p>	<p>Plate: FIG. 1</p>



SULLIVAN MINE KIMBERLEY, B.C.



Iss'd To:	Date:

LOCATION MAP

D.D.H. 6434

TIMID, WAX, AND CARP C.G.M.C. GROUPS

Drawn by: NW

Scale: 1:12,000

Date: October 1979

Plate: FIG. 2

Diamond Drill Geological Log

FOR D.D.H. 6434



LAT. 16525.58'N	DEP. 16190.33'W	ELEV. 6000.60'	GENERAL COMMENTS:																																																												
DIP -69° at collar	AZIM. 223 1/2°	LENGTH 5235'																																																													
HOLEZ.COMP. 1835'	VERY COMP. 4850'	DATE COMPLETED: Oct. 1/79	It is of interest that reduction from HQ to NQ resulted in a relatively minor increase in rate of deflection, but reduction from NQ to BQ roughly doubled the rate.																																																												
DATE COLLARED: July 8, 1979	CORE STORAGE: Sullivan Mine Open Pit Facility																																																														
DRILLED ON CLAIM(S): TIMID, WAX, AND CARP C.G.M.C.			<table border="1" style="width:100%; border-collapse: collapse;"> <thead> <tr> <th>DEPTH</th> <th>DIP</th> <th>AZIM</th> </tr> </thead> <tbody> <tr><td>0'</td><td>-69</td><td>223 1/2</td></tr> <tr><td>285'</td><td>-69 3/4</td><td>222</td></tr> <tr><td>485'</td><td>-70 1/2</td><td>220</td></tr> <tr><td>755'</td><td>-70 3/4</td><td>214</td></tr> <tr><td>1,210'</td><td>-71 1/4</td><td>211</td></tr> <tr><td>1,700</td><td>-72</td><td>204</td></tr> <tr><td>2,115</td><td>-71</td><td>198</td></tr> <tr><td>2,214</td><td>-70 1/4</td><td>195</td></tr> <tr><td>2,275</td><td></td><td>WEDGE SET</td></tr> <tr><td>2,350</td><td>-69 1/4</td><td>195</td></tr> <tr><td>2,536</td><td>-69</td><td>192</td></tr> <tr><td>2,782</td><td>-69 3/4</td><td>189</td></tr> <tr><td>3,065</td><td>-68 3/4</td><td>187</td></tr> <tr><td>3,430</td><td>-67 1/4</td><td>182</td></tr> <tr><td>3,860</td><td>-65 3/4</td><td>175</td></tr> <tr><td>4,130</td><td>-65 3/4</td><td>172</td></tr> <tr><td>4,562</td><td>-63 1/2</td><td>168</td></tr> <tr><td>5,000</td><td>-62</td><td>176</td></tr> <tr><td>5,230</td><td>-60 1/4</td><td>156</td></tr> </tbody> </table>	DEPTH	DIP	AZIM	0'	-69	223 1/2	285'	-69 3/4	222	485'	-70 1/2	220	755'	-70 3/4	214	1,210'	-71 1/4	211	1,700	-72	204	2,115	-71	198	2,214	-70 1/4	195	2,275		WEDGE SET	2,350	-69 1/4	195	2,536	-69	192	2,782	-69 3/4	189	3,065	-68 3/4	187	3,430	-67 1/4	182	3,860	-65 3/4	175	4,130	-65 3/4	172	4,562	-63 1/2	168	5,000	-62	176	5,230	-60 1/4	156
DEPTH	DIP	AZIM																																																													
0'	-69	223 1/2																																																													
285'	-69 3/4	222																																																													
485'	-70 1/2	220																																																													
755'	-70 3/4	214																																																													
1,210'	-71 1/4	211																																																													
1,700	-72	204																																																													
2,115	-71	198																																																													
2,214	-70 1/4	195																																																													
2,275		WEDGE SET																																																													
2,350	-69 1/4	195																																																													
2,536	-69	192																																																													
2,782	-69 3/4	189																																																													
3,065	-68 3/4	187																																																													
3,430	-67 1/4	182																																																													
3,860	-65 3/4	175																																																													
4,130	-65 3/4	172																																																													
4,562	-63 1/2	168																																																													
5,000	-62	176																																																													
5,230	-60 1/4	156																																																													
OBJECTIVE: Exploration West of Sullivan Mine																																																															
PLANNED LENGTH: 5000'																																																															
TERMINATION COMMENTS: Proposed drilling depth reached. No mineralization of economic interest was intersected.																																																															
DRILLED BY: Longyear																																																															
TYPE DRILL: V52																																																															
CORE SIZE(S): 0-2051' HQ, 2051'-4146' NQ, 4146'-5235' BQ.																																																															
PERFORMANCE COMMENTS: Very satisfactory performance by both drill machine and crew.																																																															
CASING REMAINING IN HOLE (LENGTH & SIZE): 29' HQ																																																															
TYPE OF CAP & METHOD OF SEALING: HQ cap screwed onto casing																																																															
OTHER MATERIAL REMAINING IN HOLE: Nil																																																															
SURVEY INSTRUMENT USED: Sperry Sun Single Shot																																																															
ADDITIONAL DOWN HOLE TESTS: Nil																																																															

LOG LEGEND

BED THICKNESS CLASSIFICATION		LITHOLOGY ABBREVIATIONS
BEDS	Very Thick Bedded 100 cm	OQ - Orthoquartzite
	Thick Bedded 30 cm	QA - Quartz Arenite
	Medium Bedded 10 cm	QW - Quartz Wacke
	Thin Bedded 3 cm	QCW - Quartzitic Wacke
	Very Thin Bedded 1 cm	W - Wacke
LAMINAE	Laminated 0.3 cm	SW - Sub Wacke
	Thinly Laminated	A - Argillite

Diamond Drill Geological Log



Objective: EXPLORATION WEST OF SULLIVAN MINE				Sampled: NIL		40 Scale			
Logged By: A. S. HAGEN				Date: SEPT-OCT/79		Color Plot & Dips			
Composites: NIL				App. Bear 221°		Ore Res & Aver.			
Block	Sect	Place	App. Dip: -69°	Length 5,235'					
From	To	Discard	Reason						
0	29	Overburden.							
29	146	Medium-thick bedded sediment weathered, QW-QcW with SW to A tops, lensey in part. Crush brecciation 83' to 84' and 93' to 95'. Minor very thin to thin, massive and finely laminated SW-A interbeds. Bedding 70° to core.							
146	175	Very thin-thin bedded sediment, SW-A. Beds finely laminated to massive for most part. Weathering evident. Bdg. 70°-75° to core. Minor, narrow crushed zones along bedding.							
175	182	Medium-thick bedded sediment, QcW with SW-A tops and interbeds. Weathered.							
182	199	Very thin-thin bedded sediment, SW-A (same as 146'-175'). Brecciation with slickensides 187'-188'. Weathered.							
199	282	Medium-thick bedded sediment, QW-QcW-W with SW-A tops. Finely laminated and massive SW-A interbeds. Weathering evident. Some narrow crushed and/or brecciated zones apparently along bedding planes. Bedding 75° to core.							
282	292	Very thin-bedded sediment SW-A (same as 146'-175' etc). Occasional thin bedded QcW-W bed. Weathered. Bedding 75°-80° to core.							
292	362	Medium-thick bedded sediment QcW-W with SW-A tops. Some interbeds of SW-A. Crushed, brecciated zones 380' to 390'. Weathering. Bedding 75° to core.							
				Core Size					
				HQ					
				Hole No. 6434		Page 1			

Diamond Drill Geological Log



Objective:				Sampled:			40 Scale	
Logged By:				Date:			Color Plot & Dips	
Composites:				Ore Classes & Aver				
Block	Sect.	Place	App. Bear.	App. Dip.	Length			
From	To	Discard	Reason					
362	456		Very thin-thin bedded sediment SW-A, occasional thin to medium bed of QcW-W, thin laminations in part, some calcareous. Minor, narrow brecciated zones along bedding planes. Bedding 70°-75° to core.					
456	469		Thick bedded sediment QW-QcW, graded with SW-A tops. Laminated to very thin bedded SW-A interbeds. Bedding 80° to core.					
469	527		Thin-medium bedded sediment QcW-W, graded in part with SW-A tops and interbeds. Broken core with occasional, narrow, crush breccia along bedding planes. Bedding 55° to 70° to core.					
527	574		Thick bedded sediment, QA-QW grading to A tops with SW-A interbeds.					
574	580		Fault zone, brecciated, bleached rock, break running from parallel to 30° to core.					
580	606		Thick bedded sediment, similar to 527' to 574'. Rusty weathering colouration, in jointing etc. throughout core, ends at 606'. Core is moderately to badly broken, in part, to this measurement.					
606	676		Thinly laminated-laminated-very thin-thin bedded sediment, predominantly SW-A. Some thin, graded beds QcW to A. One thin, graded QA to SW bed at 610'. Light grey, calcareous beds are common throughout. Bedding 75° to core.					
676	956		Medium-thick (predominantly thick) bedded sediment, QW-QcW (rare QA) to A.			Core Size		
			Some beds graded, others change abruptly from quartzitic bases to argillaceous tops. Interbeds of SW-A, some laminated and thinly laminated. Light grey lensy laminations in a medium-dark grey matrix from 750' to 754'. 2 "			HQ		
						Hole No. 6434		
						Page 2		

Diamond Drill Geological Log



Objective:		Sampled:		40 Scale		
Logged By:		Date:		Color Plot & Dips		
Block:		Sect.:		Ore Classes & Aver		
		Place:				
		App. Bear.		App. Dip.		
		Length:				
From	To	Discard	Reason:			
676	956		(cont'd) brecciated zone at 20° to core from 888' to 891', brecciated core 903' to 904'. Rare clasts (rip ups) noted. Bedding 50°-60° to core.			
956	1035		Thinly laminated-laminated-very thin bedded-thin bedded sediment, predominantly W-SW-A. Some graded, thin bedded QcW beds with SW-A tops. Occasional pyrrhotite-pyrite flecks in more coarse grained zones. Bedding 50° - 55° to core.			
1035	1208		Medium-thick (predominantly thick) bedded sediment, QW-QcW with SW-A tops. Similar zone to 676'-956'. Some unconformable contacts, occasional clast (rip ups). Interbeds of from massive to laminated SW-A. Occasional biotitized zone. Bedding 50°-55° to core.			
1208	1598		Intrusive sill, gabbro. Fine grained at contacts, varies from medium to coarse grained throughout. Numerous erratic quartz veins. Brecciated gabbro in quartz vein from 1394' to 1399'.			
1598	1989		Medium-thick bedded sediment, similar to 1035' to 1208'. Two very thick beds (5') of QA grading to SW-A in upper 1.5', bases at 1,345' and 1,377'. Bedding 45°-50° to core. Jointing 1,892' to 1,948' causing moderate to badly broken core in part. Possible fault 1,937'-1,938' (crushed, gougey).			
1989	2044		Thick bedded sediment, QW-QcW, argillaceous tops to 10 cm thick. Interbeds of medium bedded W-SW. Load cast structure at 2013'. Bedding 45° to core.			
2044	2055		Thinly laminated-laminated sediment, SW. Bedding 45° to core.			

Core Size	HQ 2051'
	NQ 2051' to 4146'
Hole No	6434
Page	3

Diamond Drill Geological Log



Objective:		Sampled:		Color Plot & Dips		Ore Classes & Aver	
Logged By:		Date:		Composites:			
Block	Sect	Place	App. Bear.	App. Dip.	Length		
From	To	Discard	Reason:				
2055	2157		Medium-thick bedded sediment, QcW-W, graded beds in part, SW-A tops. Interbeds of thinly laminated-laminated SW-A. Quartz vein with coarse biotite and amphibole from 2147.5' to 2149.0'. Very thick bed at base of this sequence. Bedding 45°-55° to core.				
2157	2168		Thin-medium bedded sediment, W-SW. Some cross bedding in laminated zone.				
2168	2194		Medium-thick bedded sediment, QcW-W. Broken core 2175' to 2178', minor gouge.				
2194	2232		Thin-medium bedded sediment, SW, laminated in part. Compaction breccia 2211.5' to 2212.5'.				
2232	2412		Medium-thick bedded sediment, QcW-W with SW-A tops. Interbeds of thinly laminated-laminated SW-A. Bedding 45°-50° to core.				
2412	2426		Thinly laminated-laminated sediment, SW-A. Some cross bedding at 2422'. Bedding 45° to core.				
2426	2638		Medium-thick bedded sediment, QcW-W, thinly laminated-laminated SW intervals are common. Jointing from parallel to 50° to core occasionally causes moderately broken core, 2574' to 2596' badly broken in part. Bedding variable from 50°-70° to core.				
2638	2645		Lamprophyre, some fragmented sediment inclusions. Core immediately adjacent is badly shattered and crushed. Possible fault zone, some gouge along break at 60° to core.			Core Size	
						NQ	
						Hole No.	Page
						6434	4

Diamond Drill Geological Log



Objective:		Sampled:		40 Scale	
Logged By:		Date:		Color Plot & Dips	
Block		Sect.:		Ore Classes & Aver.	
Place:		App. Bear.:		App. Dip.:	
Length:		Composites:			
From	To	Discard	Reason		
2645	2762		Thick-very thick bedded sediment, QW-QcW, graded in part, some argillaceous tops in excess of 3'. Occasional thinly laminated interbeds. Core is partially shattered and crushed from 2741' to 2753', no major fault indicated. Bedding 30° to core at 2648'. 45° to 2700' and 45° at 2762'.		
2762	2832		Medium bedded sediment, QcW-W, graded beds, with SW-A tops. Considerable amount of thinly laminated to laminated SW-A interbeds within this footage. Bedding 50° to core.		
2832	2920		Thick-very thick bedded sediment, QW-QcW, graded beds with SW-A tops. Thinly laminated-laminated interbeds in part. 3" gouge zone parallels bedding 45° to core at 2861'.		
2920	2953		Medium bedded sediment, W with SW-A tops, thinly laminated-laminated interbeds. Some cross bedding noted. Bedding 55° to core.		
2953	3030		Thick-very thick bedded sediment, QW-QcW, graded beds, SW-A tops. Usual interbeds of thinly laminated-laminated SW-A together with SW-A units, with vague internal features, in the medium bedded range. 3" lamphyre with erratic quartz veining cuts core at 35° at 3020'. Bedding 50° to core.		
3030	3655		Medium-thick bedded sediment (predominantly thick bedded), QW-QcW graded in part, with SW-A tops. Occasional interbeds of thinly laminated-laminated SW-A. Some beds change abruptly upwards from quartzitic bases to argillaceous tops. Rare clasts noted (rip ups). Some SW-A interbed sequences are in excess of 3'. Joint patterns between 3394' and 3492', from parallel to 50° to core, cause moderate to badly broken core in part, occasional thin gouge and breccia, however, no major fault indicated. Bedding is 45° to 50°	Core Size NQ	Page 5
				Hole No 6434	

Diamond Drill Geological Log



Objective:							Sampled:			40 Scale			
Logged By:							Date:			Composites:		Color Plot & Dips	Ore Classes & Aver
Block	Sect.	Place	App. Bear.	App. Dip.	Length								
From	To	Discard	Reason										
3030	3655		(Cont'd) to core at start of this footage changing gradually to 55°-60° at end.										
3655	3688		Thick bedded sediment, QW-QcW grading to SW-A tops. Interbeds of laminated to thin bedded SW-A.										
3688	3702		Laminated-very thin bedded-thin bedded sediment, W-SW-A. Irregular contacts and lens-like features in coarser grained sediment. Bedding 55° to core.										
3702	4225		Thick bedded (rare medium bed) sediment, QW-QcW grading to SW-A tops. Interbeds of from thinly laminated to thin bedded W-SW-A. Some irregular, lens-like (current) features in more argillaceous segments. Interbedded sequences occasionally in excess of 5'. Bedding 45° to 50° to core. Folding indicated at 3825' with bedding 25° to core (local fold). Narrow gouge zones parallel to bedding at 4101', 4189', 4194' and 4211'										
4225	4499		Medium-thick bedded sediment, QW-QcW grading to SW-A tops, occasional abrupt changes from quartzitic bases to argillaceous tops. Interbeds of SW-A, thinly laminated to laminated in part, some current features. Rare calcareous zones. Bedding 55° to core.										
4499	4546		Bedded sediment ranging from thinly laminated to medium thickness, QcW-W-SW-A. Light grey, thinly laminated beds notably calcareous. Bedding 55° to core.										
4546	4886		Medium-thick bedded sediment, QW-QcW grading to SW-A tops (similar to 4225' to 4499'). Some interbeds notably calcareous. Bedding 55°-60° to core.		Core Size								
						NQ							
						Hole No. 6434		Page 6					

Diamond Drill Geological Log



Objective:		Sampled:						40 Scale
Logged By:		Date:		Composites:				Color Plot & Dips
Block:	Sect.:	Place:	App. Bear:	App. Dip:	Length:		0	
From	To	Discard:	Reason:					
4886	4896		Medium-thick bedded sediment, W with SW-A tops. Similar depositional style as above, however, more argillaceous.					
			Erratic, minor pyrrhotite mineralized quartz vein at 4892'. Bedding 55°-60° to core.					
4896	4951		Thinly laminated sediment, W-SW. Sparse pyrrhotite-pyrite flecks occasionally along laminations. Bedding 40°-45° to core.					
4951	4980		Laminated-very thin bedded-thin bedded sediment, W-SW-A, some thinly laminated beds. Pyrrhotite-pyrite spotting becoming a notable feature of some beds. Bedding 50°-55° to core.					
4980	5235		Very thin bedded-thin bedded-medium bedded sediment, W-SW with thinly laminated to laminated interbeds. Distinct colour alteration (biotitized), some silicification. Pyrrhotite-pyrite flecks common. Calcareous beds 5051' to 5055'. Bedding begins to steepen at 5070' (30° to core) to the following: 5100'-25°, 5120'-10°, 5140'-parallel to core, 5170'-10° to 15°, 5200'-15° and 5234'-05°.					
D.D.H. 6434 completed at 5235'.								
							Cave Size	
							BQ	
							Hole No. 6434	
							Page 7	

S.T.

SULLIVAN MINE

KIMBERLEY, B.C.

COST BREAKDOWN - D.D.H. 64341. Coring Cost At Contract Rates:

<u>Depth (feet)</u>	<u>Claim</u>	<u>Dollars</u>	<u>Invoice Numbers</u>
0 - 655	TIMID	16,551.95	6863
655 - 1782	TIMID to 800'	3,893.25	6864
	WAX from 800'	29,426.00	6864
1782 - 2587	WAX	26,120.95	6995
2587 - 3653	WAX	41,145.65	6996
3653 - 4298	WAX	30,288.45	7110
4298- 5235	WAX to 4979'	34,961.50	Pending
	CARP from 4979'	15,550.40	Pending
TOTAL		<u>197,938.15</u>	

2. Wedging At 2275' At Contract Rate:

WAX	2,615.00	6995
-----	----------	------

3. Indirect Costs Apportioned To Each Group On Basis Of Footage Drilled

Hourly Charges	(L)*	21,657.60
Moving Set Up/Tear Down	(L)	10,989.00
Mud	(L)	3,630.71
Mobilization/Demobilization	(L)	8,250.00
Material	(L)	11,303.05
Mud & Fluids	(T)	18,369.94
Core Boxes	(W)	1,369.36
Site, Preparation, Cat etc.	(C)	1,978.00
Road Building	(C)	4,336.00
Supervision	(C)	2,886.00
TOTAL		<u>84,769.66</u>

* Letter in brackets indicates source of costs as follows:

(L) Longyear Canada Inc.

Invoices: 6863, 6864, 6993, 6995, 6996, 7110, and pending.

(T) Thiessen Equipment Ltd.

Invoices: 5337, 5670, 5712, 5738, 5789, 5882, 5887, 5932, 5963

(W) Whalley & Son Ltd.

Invoices: 9014, 8945. Packing Slip 3684.

(C) Cominco Ltd.

Applicable Cost collection sheets for July, August & September.

<u>Claim</u>	<u>TIMID</u>	<u>WAX</u>	<u>CARP</u>
Direct Costs & Wedging	20,445.20	164,557.55	15,550.40
Indirect Costs	12,952.81	67,663.14	4,153.71
TOTALS	<u>33,398.01</u>	<u>232,220.69</u>	<u>19,704.11</u>

CONTRACT DRILLING DIVISION

PLEASE REMIT TO:

Longyear Canada Inc.
 721 Aldford Avenue
 ANNACIS ISLAND
 NEW WESTMINSTER, B.C. V3M 5P5

INVOICE No.	7110
CUST. No.	6005
JOB No.	6249
DEST.	062



LONGYEAR CANADA INC.

Box 330, NORTH BAY, ONTARIO, CANADA P1B 8H6

Cominco Ltd.,
 P.O. Box 2000,
 Kimberley, British Columbia
 V1A 2G3

Cominco Kimberley Deep Hole
 Invoice date: October 2, 1979
 for September 1979

To: Invoice for diamond drilling performed on Kimberley, B.C. mining properties, during period September 01-15, 1979 per agreement, P.O. S19241-L.

Hole No.	Size	From	To	Total	Rate	Amount
6434	NQ Wireline	3653	4000	347	45.25 ✓	15,701.75 ✓
6434	NQ Wireline	4000	4146 ✓	146 ✓	51.55 ✓	7,526.30 ✓
6434	BQ Wireline	4146	4298	152 ✓	46.45 ✓	7,060.40 ✓
				645		30,288.45

Client Testing

Hole 6434 1 hour ✓ 76.80

Drilling Mud and Additives

336 gallons fuel @ .749 251.66
 2 Quik-seal @ 30.89 61.78
 Plus 14% 313.44
43.88
357.32 ✓

Copy

Reaming Cave, Lost Circulation, Hole Reduction

Hole 6434

194 man hours @ 20.00	3,880.00
97 machine hours @ 36.80 ✓	3,569.60
1 NQ Bit GR2902 ✓	431.60
1 NQ Bit I5764 ✓	376.22
1 NQ Bit I5746 ✓	376.22
1 NQ Bit I5757 ✓	376.22
1 NQ Shell E1102 ✓	146.33
1 NQ Shell E3541 ✓	146.33
1 BW Shoe E1342 ✓	88.92
1 BQ Bit I96256 ✓	241.28
1 BQ Bit I96258 ✓	241.28
1 BQ Shell E817 ✓	115.75
1 BQ Shell E879 ✓	115.75
Prorated re above and items per invoice 6996-see later invoice	-
	2,655.90
Plus 14%	371.83
	3,027.73

*Charge 6112.34
 To warehouse Oct 11, 1979*

10,477.33 ✓
 \$ 41,199.90 E

CONTRACT DRILLING DIVISION

PLEASE REMIT TO:

Longyear Canada Inc.
 721 Aldford Avenue
 ANNACIS ISLAND
 NEW WESTMINSTER, B.C. V3M 5P5

INVOICE No.	6995
CUST. No.	6005
JOB No.	6249
DEST.	062



LONGYEAR CANADA INC.

Box 330, NORTH BAY, ONTARIO, CANADA P1B 8H6

Cominco Ltd.,
 P.O. Box 2000,
 Kimberley, British Columbia
 V1A 2G3

Cominco Kimberley Deep Hole
 Invoice date: September 10, 1979
 for August 1979

To: Invoice for diamond drilling performed on Kimberley, B.C. mining properties, during period August 01-15, 1979 per agreement.
 P.O. S-19241L.

Hole No.	Size	From	To	Total	Rate	Amount
6434	HQ Wireline	1782	2000	218	33.00	7,194.00
6434	HQ Wireline	2000	2051	51	37.95	1,935.45
6434	NQ Wireline	2051	2500	449	31.10	13,963.90
6434	NQ Wireline	2500	2587	87	34.80	3,027.60
				<u>805</u>		<u>26,120.95</u>

Client Testing

Hole 6434 - 4 hours @ 76.80 ✓ 307.20 ✓

Drilling Mud and Additives

✓ 4 Caustic Soda @ 29.32 ✓ 117.28
 9 Quik Seal @ 30.89 278.01
 3 Asbestos @ 23.09 69.27
 2 CC 16 @ 26.00 52.00
 230 fuel @ .749 172.27
 688.83
 Plus 14% 96.44
 785.27 ✓

Wedging

Hole 6434 at 2275 feet
 1 N Size Wedge 2,615.00 ✓

Hole Conditioning For Wedging

Hole 6434
 23 man hours @ 20.00 460.00
 11 1/2 machine hours @ 36.80 423.20
 883.20 ✓

Reaming Cave-Lost Circulation-Hole Reduction

Hole 6434
 97 man hours @ 20.00 1,940.00
 48 1/2 machine hours @ 36.80 1,784.80
 1 HQ Bit I4298 492.18
 1 HQ Bit I4306 492.18
 1 NW Econo Shoe E3844 115.70
 Prorated diamond recovery re
 4303, 4302, 4287, 3790, 3031,
 3030, 85089, 4298, 4306-see later
 invoice

INVOICE No.	6995
CUST. No.	
JOB No.	
DEST.	

Longyear

LONGYEAR CANADA INC.

Box 330, NORTH BAY, ONTARIO, CANADA P1B 8H6

Cominco Ltd.
2...

	1,100.06		
Plus 14%	<u>154.01</u>		
		<u>1,254.07</u>	4,978.87 ✓

Cementing			
Hole 6434 at 667 feet			
Prorated diamond recovery re 2045		(194.39) CR. ✓	
	Plus 14%	<u>(27.21) CR.</u>	(221.60) C
			<u>35,468.89</u>

Disturbance

35,468.89 - 35,468.89

To warehouse, Sept 21

CONTRACT DRILLING DIVISION

PLEASE REMIT TO:

Longyear Canada Inc.
 721 Aldford Avenue
 ANNACIS ISLAND
 NEW WESTMINSTER, B.C. V3M 5P5

INVOICE No.	6993
CUST. No.	6005
JOB No.	6244
DEST.	062

Longyear

LONGYEAR CANADA INC.

Box 330, NORTH BAY, ONTARIO, CANADA P1B 8H6

Cominco Limited,
 P.O. Box 2000,
 Kimberley, British Columbia
 V1A 2G3

Cominco Kimberley
 Invoice date: September 13, 1979
 for August 1979

Attention: Mr. John M. Hamilton
 Chief Geologist

To: Credit your account re diamond drilling performed on mining properties located near Cranbrook and Kimberley, British Columbia per agreement. Cominco Ref. S18539L.

Lost Circulation

Hole 6438

Prorated recovery re invoice 6861
 Plus 14%

(1,756.12) CR. ✓
 (245.86) CR.
 (2,001.98) CR.

Hole 6437

Prorated recovery re invoice 6861
 Plus 14%

(189.96) CR. ✓
 (26.59) CR.
 (216.55) CR.
 (2,218.53)

Drilling Mud and Additives (attached)

Thiessen Equipment Ltd. - (Freight only charged on invoice 6742)

922.45 ✓

Thiessen Equipment Ltd. - (Goods charged on invoice 6860)

75.10
 997.55 ✓
 139.66

Plus 14%

1,137.21

(1,081.32)

DISTRIBUTION

6112-37

920.66

" C R E D I T "

6112-38

(2,001.98) Credit

TOTAL

(1,081.32) Credit

To warehouse Sept 21

INVOICE NO.	6864
CUST. NO.	6005
JOB NO.	6249
DEST.	062

Longyear

JUL 1979

LONGYEAR CANADA INC.

Box 330, NORTH BAY, ONTARIO, CANADA P1B 8H6

PO S 19241 L

Cominco Ltd.,
P.O. Box 2000,
Kimberley, British Columbia
V1A 2G3

Cominco Kimberley Deep Hole
Invoice date: August 10, 1979
for July 1979

To: Invoice for diamond drilling performed on Kimberley, B.C. mining properties, during period July 16-31, 1979 per agreement.

Hole No.	Size	From	To	Total	Rate	
6434	HQ Wireline	655	1000	345	26.85	9,263.25
6434	HQ Wireline	1000	1500	500	29.50	14,750.00
6434	HQ Wireline	1500	1782	282	33.00	9,306.00
				1127		33,319.25

Client Testing

✓ Hole 6434 - 4 1/2 hours @ 76.80 345.60

Client Delays

✓ Hole 6434 - 1 hour 20.00

Reaming Cave - Lost Circulation

Hole 6434

✓ 25 man hours @ 20.00 500.00

✓ 12 1/2 machine hours @ 36.80 460.00

1 HQ Bit I4303 492.18

1 HQ Bit I4302 492.18

1 HQ Bit I4287 492.18

1 HQ Shell E3790 226.04

Prorated diamond recovery re above
and items I3031, I3030, Y85089-
see later invoice

1,702.58	
238.36	
<u>1,940.94</u>	2,900.94

Cementing

Hole 6434 at 667 feet

✓ 29 man hours @ 20.00 580.00

✓ 14 1/2 machine hours @ 36.80 533.60

✓ 5 Cement Fondu @ 25.04 125.20

✓ 1 HQ Shell E2045 226.04

Prorated diamond recovery-see later
invoice

351.24	
49.17	
<u>400.41</u>	1,514.01

INVOICE No.	6864
CUST. No.	
JOB No.	
DEST.	



LONGYEAR CANADA INC.

Box 330, NORTH BAY, ONTARIO, CANADA P1B 8H6

Cominco Ltd.
2...

Drilling Mud and Additives

✓ 1 Quik-seal	30.89
✓ 9 CC16 @ 26.00	234.00 ✓
✓ 2 Cellex @ 169.99	339.98
✓ 3 Caustic @ 29.32	71.76
✓ 16 gallons fuel @ .749	11.98
✓ Millar & Brown Ltd. (attached)	51.34 ✓
	<u>739.95</u>
Plus 14%	103.59

843.54

\$ 38,943.34

OK.
[Signature]

Charge 6112.34

To Whom it may concern May 72

INVOICE No.	6863
CUST. No.	6005
JOB No.	6249
DEST.	062

Longyear

ORIGINAL

LONGYEAR CANADA INC.

Box 330, NORTH BAY, ONTARIO, CANADA PIB 8H6

Cominco Ltd.,
P.O. Box 2000,
Kimberley, British Columbia
V1A 2G3

Cominco Kimberley Deep Hole
Invoice date: July 25, 1979
for July 1979

To: Invoice for diamond drilling performed on Kimberley, B.C. mining properties, during period July 03-15, 1979 per agreement.

Hole No.	Size	From	To	Total	Rate	
6434	Overburden	0	29	29	23.65	685.85
6434	HQ Wireline	29	500	471	24.85	11,704.35
6434	HQ Wireline	500	655	155	26.85	4,161.75
				<u>655</u>		<u>16,551.95</u>

Move In to Hole 6434
188 man hours @ 27.75

Mobilization
Lump Sum \$8,250.00 x 50%

Client Testing
Hole 6434 - 2 hours @ 76.80

Travel Time (Client Portion)
Hole 6434 - 15 1/2 hours @ 20.00

Reaming Cave - Lost Circulation
Hole 6434

16 man hours @ 20.00 320.00
8 machine hours @ 36.80 294.40
1 HQ Bit I3031 492.18
1 HQ Bit I3030 492.18
1 HQ Bit Y85089 726.27

Prorated diamond recovery-see later invoice

1,710.63
239.49

Plus 14%

1,950.12

2,564.52

Drilling Mud and Additives

91 gallons fuel @ .749 68.16
1 CC 16 26.00
1 Caustic soda 23.92
1 Asbestos 23.09
3 Quik Seal @ 30.39 92.67
Plus 14% 233.84
32.74

266.58

\$ 29,188.65

Bill: I discussed this with Bill Walsh on August 7. It will be removed, likely by a credit on a subsequent invoice. Bill Walsh will write a letter confirming that these costs don't apply and shouldn't be charged.
SMH

PHONE: 433-5141



5701 BERESFORD STREET
BURNABY, B.C. V5J 1J9

DIAMOND DRILL
REPAIRS & SERVICE
CORE BOXES
WIRE-LINE HOISTS

June 14/79

OLD TO Cominco Ltd.,
TRAIL, B.C.
VIR 4L8

SHIP TO
Sullivan Mine, Kimberley.

ORDER DATE
June 8/79

TERMS: NET 15% OF MONTH FOLLOWING

SALES TAX LIC. NO.
EXEMPT
G.S.T.A. TAX NO.
EXTRA (1F)
CUSTOMER'S ORDER NO. 319190X
SHIPPING DATE June 12/79
P.P.D.
COLL. X

A Sandner Bros. Transport

OUR ORDER NO. 3494

ORDERED	BACK O.	DESCRIPTION	UNIT PRICE	QTY. SHIPPED	AMOUNT
3 only		NQ Core Boxes	3.85	228	\$ 877.80
		LESS: Quantity Discount @ .15¢ per box			34.20
					\$ 843.60
	F	2 6112	\$ 17.34	433 PST	33.74
	VPR				\$ 877.34
	079				
	67				

RECEIVED
TERMS: ACCOUNTS DUE & PAYABLE ON 01/ BEFORE
30 DAYS FROM DATE OF INVOICE. 2% PER MONTH
CHARGED ON OVERDUE AMOUNTS.

No 8945

TOTAL \$ 877.34

THIESSEN EQUIPMENT LTD.

CLOVERDALE INDUSTRIAL ESTATE
 17910 ROAN PLACE, SURREY, B.C. V3S 5K1
 TELEPHONE 576-9491 TELEX 04-365565

DATE: June 13, 1979

INVOICE TO: Cominco Ltd.
 Trail, B.C.
 V1R 4L8

CONSIGNEE TO: Above @ Sullivan Mine
 Kimberley, B.C. V1A 2G3

INVOICE No 5337

SHIPPED VIA Thiessen Truck
 PREPAID COLLECT

SHIPPING ORDER No. D 19369

SHIPPING DATE June 12/79
 FEDERAL SALES TAX Exempt
 PROVINCIAL SALES TAX 4% B.C. Tax

CUSTOMER'S ORDER No. S-19119-T

Quantity	Unit	Description	Unit Price	Amount
850	25 Kg	Quik Gel	\$4.75/ea	\$4,037.50
100	Cases	Quik Trol (1000 X 1 Kg)	\$66.00/case	\$6,600.00
				\$10,637.50
			4% B.C. Tax	425.50
				\$11,063.00
20	only	Double Poly wrap on non-returnable skids		
				2 6112.34 - 11,063.00
After 60 days, Interest of 1% will be charged on Declining Account Balance				

ALL INVOICES NET 30 DAYS
 REMIT FROM THIS INVOICE — NO STATEMENTS ISSUED

THIESSEN EQUIPMENT LTD.

CLOVERDALE INDUSTRIAL ESTATE
 17910 ROAN PLACE, SURREY, B.C. V3S 5K1
 TELEPHONE 576-9491 TELEEX 04365965

DATE: July 27/79
 INVOICE TO: Comingo Ltd
 Purchasing Division
 Trail, B.C.
 V1R 4L8
 CONSIGNED TO: Above @ Sullivan Mine
 c/o CP Transport

INVOICE No 5670

SHIPPED VIA Valley Bus to CP Transport	PREPAID	COLLECT X	SHIPPING ORDER No. D19721
SHIPPING DATE July 25/79	FEDERAL SALES TAX Exempt	PROVINCIAL SALES TAX 4% Extra	CUSTOMER'S ORDER No. S - 194 - 96T

Quantity	Unit	Description	Unit Price	Amount
50	cases	Quik Trol (500 x 1kg) /	\$78.00/case	\$3,900.00
		Less 5% Discount		195.00
				3875.45
			4% SS Tax	148.50
				\$3,853.20
1	only	Single poly wrap on non-returnable skid	\$6.25/ea	6.25
				\$3,859.45
		Prepaid Valley Bus Charges		16.00
				\$3,875.45
<p>After 60 days Interest of 1% will be charged on Declining Account Balance.</p>				

ALL INVOICES NET 30 DAYS
 REMIT FROM THIS INVOICE — NO STATEMENTS ISSUED

INVOICE TO: Cominco Ltd
Purchasing Division
Trail, B.C.

CONSIGNED TO: Cominco Ltd
Sullivan Mine
Cranbrook, B.C.

INVOICE No 5738

SHIPPED VIA Hillax & Brown

PREPAID COLLECT
X by consignee

SHIPPING ORDER No. D19828

SHIPPING DATE
Aug 2/79

FEDERAL SALES TAX
Exempt

PROVINCIAL SALES TAX
4% Extra

CUSTOMER'S ORDER No.
S-194-96T

Quantity	Unit	Description	Unit Price	Amount
15	50#	CC - 16	\$25.00/ea	\$375.00
			4% SS Tax	15.00
				\$390.00
				390.00
				1528-43
<p>After 60 days, Interest of 1 1/2% will be charged on Declining Account Balance.</p>				

ALL INVOICES NET 30 DAYS
REMIT FROM THIS INVOICE — NO STATEMENTS ISSUED

ALL INVOICES NET 30 DAYS
REMIT FROM THIS INVOICE — NO STATEMENTS ISSUED

THIESSEN EQUIPMENT LTD.

CLOVERDALE INDUSTRIAL ESTATE
 17910 ROAN PLACE, SURREY, B.C. V3S 5K1
 TELEPHONE 576-9491 TELEEX 04-303565

DATE: July 31, 1979

INVOICE TO: **Confredo Limited**
 Purchasing Division
 Trail, B.C. V1R 4L3

CONSIGNEE TO:
 Above @ Kimberley, B.C. Sullivan Mine

INVOICE No 5712

SHIPPED VIA Picked up a K&K, Sparwood
 Cranbrook Express

PREPAID COLLECT
 X

SHIPPING ORDER No.
 D 15798

SHIPPING DATE
 July 25/79

FEDERAL SALES TAX
 Exempt

PROVINCIAL SALES TAX
 4% Extra

CUSTOMER'S ORDER No.
 S19496T

Quantity	Unit	Description	Unit Price	Amount
12	Cases	Out. Prod	\$78.00/case	\$936.00
			4% SS Tax	37.44
				\$973.44

E.S.T. AMOUNT	26112	973.44
B.C. EXCISE		
F.O.B. COST		
DISCOUNT DATE		
NET PAYMENT	5527.00	
APPROVAL		

After 60 days, Interest of 1 1/2% will be charged on Declining Account Balance.

ALL INVOICES DUE 30 DAYS
 REMIT FROM THIS INVOICE -- NO STATEMENTS ISSUED

THIESSEN EQUIPMENT LTD.

CLOVERDALE INDUSTRIAL ESTATE
17910 HOAN PLACE, SURREY, B.C. V3S 5K1
TELEPHONE 576-9491 TELEX 04-365905

DATE: August 9, 1979

INVOICE TO: Cominco Ltd.
Purchasing Division
Trail, B.C. V1R 4L3

CONSIGNED TO: Above & Sullivan Mines, Kimberley, B.C.

INVOICE No 5789

SHIPPED VIA Sandner Brothers Transport		PREPAID	COLLECT X	SHIPPING ORDER No. D 19724
SHIPPING DATE August 7/79	FEDERAL SALES TAX Exempt	PROVINCIAL SALES TAX 4% B.C.P.S.T.		CUSTOMER'S ORDER No. S-154-96X
Quantity	Unit	Description	Unit Price	Amount
825	25 Kg	Quik Gel \$4.80 Less 10% quantity discount	\$4.32/ea	\$3,564.00
30	Cases	Quik Sol (380 x 1Kg) \$78.00 Less 5% quantity discount	\$74.10/case	\$2,223.00
10	50#	Cellar	\$167.00/ea	\$1,670.00
20	50#	Caustic Soda	\$23.00/ea	460.00
10	40#	Quik Seal (Fine)	\$34.00/ea	340.00
2	100#	Asbestos	\$23.00/ea	46.00
9324.03				\$8,895.80
			4% B.C. Tax	355.83
				\$9,251.63
905	Bags	Poly wrapped on non-returnable sides	\$.08/bag	72.40
				\$9,324.03

After 60 days, Interest of 1 1/2% will be charged on Declining Account Balance

ALL INVOICES NET 30 DAYS
REMIT FROM THIS INVOICE — NO STATEMENTS ISSUED

TRIBBON EQUIPMENT LTD.

CLOVERDALE INDUSTRIAL ESTATE
 17910 ROAN PLACE, SURREY, B.C. V3S 5K1
 TELEPHONE 576-9491 TELEX 04-365965

DATE: August 22, 1979

INVOICE TO: Cominco Limited
 Purchasing Division
 Trail, B.C. V1R 4L8

CONSIGNEE TO:

Above @ Sullivan Mine, Kimberley, B.C.

INVOICE No 5882

DELIVERED VIA: Prepaid Valley Bus to Door 45 CP Transport

PREPAID COLLECT X

SHIPPING ORDER No. D 19936

SHIPPING DATE: 8-22/79

FEDERAL SALES TAX Exempt

PROVINCIAL SALES TAX 4% Extra

CUSTOMER'S ORDER No. S 19738

Quantity	Unit	Description	Unit Price	Amount
10	55#	Caustic Soda	\$23.00/ea	\$230.00
			4% PS Tax	9.20
				\$339.20
		Prepaid Valley Bus Charges		10.25
				\$249.45
<p>After 60 days, Interest of 1 1/2% will be charged on Declining Account Balances</p>				

ALL INVOICES NET 30 DAYS
 REMIT FROM THIS INVOICE -- NO STATEMENTS ISSUED

CLOVERDALE INDUSTRIAL ESTATE
 17910 ROAN PLACE, SURREY, B.C. V3S 5K1
 TELEPHONE 576-9491 TILER 04-365503

DATE: August 23, 1979

INVOICE TO: Cominco Limited
 Purchasing Dept.
 Trail, B.C. V1A 4L8

CONSIGNEE TO:

Above @ Sullivan Mine, Kimberley, B.C.

INVOICE No 5887

SHIPPED VIA

Valley Bus - Door 45 CP Transport

PREPAID

COLLECT

SHIPPING ORDER No.

D 19902

SHIPPING DATE

August 22/79

FEDERAL SALES TAX

Exempt

PROVINCIAL SALES TAX

4% Extra

CUSTOMER'S ORDER No.

S 19703X

Quantity	Unit	Description	Unit Price	Amount
10.	50#	CC-16	\$25.00/ea	\$250.00
			4% SS Tax	10.00
				\$260.00
		Prepaid Valley Bus Charges		10.25
				\$270.25
				261.12 - 270.25
<p>After 60 days, Interest of 1½% will be charged on Declining Account Balance.</p>				

ALL INVOICES NET 30 DAYS
 REMIT FROM THIS INVOICE - NO STATEMENTS ISSUED

ROSEN EQUIPMENT LTD.

CLOVERDALE INDUSTRIAL ESTATE
 17810 ROAN PLACE, SURREY, B.C. V3S 5K1
 TELEPHONE 578-9491 TELEX 04-365565

DATE: August 30, 1979

INVOICE TO: Cominco Limited
 Purchasing Division
 Trail, B.C. V1R 4L3

CONSIGNEE TO:
 Above @ Sullivan Mine, Kimberley, B.C.

INVOICE No 5932

SHIPPED VIA
 Valley Bus to C.P.

PREPAID COLLECT
 X

SHIPPING ORDER No.
 D 19977

SHIPPING DATE
 August 29/79

FEDERAL SALES TAX
 Exempt

PROVINCIAL SALES TAX
 4% Extra

CUSTOMER'S ORDER No.
 S19-790 X

Quantity	Unit	Description	Unit Price	Amount
50	Cases	Quik Trol (500 X 1 Kg)	\$78.00/case	\$3,900.00
			4% SS Tax	156.00
				\$4,056.00
	only	Single Poly Wrap	\$2.95/ea	<p> 2.95
				\$4,058.95
		Prepaid Valley Bus Charges		<p> 17.00
				\$4,075.95

After 60 days, Interest of 1% will be charged on Declining Account Balance

ALL INVOICES NET 30 DAYS
 REMIT FROM THIS INVOICE — NO STATEMENTS ISSUED

THIESSEN EQUIPMENT LTD.

CLOVERDALE INDUSTRIAL ESTATE
 17910 ROAN PLACE, SURREY, B.C. V3S 5K1
 TELEPHONE 576-9491 TELEX 04-365365

DATE: September 5, 1979

INVOICE TO: Cominco Ltd.
 Purchasing Department
 Trail, B.C.

CONSIGNEE TO:

Above @ Sullivan Mine, Kimberley, B.C.

INVOICE No 5963

ORDERED VIA
 Miller & Brown

PREPAID COLLECT
 X

SHIPPING ORDER No.
 D 19996

SHIPPING DATE
 August 4/79

FEDERAL SALES TAX
 Exempt

PROVINCIAL SALES TAX
 4 5 Extra

CUSTOMER'S ORDER No.
 S 19830 X

Quantity	Unit	Description	Unit Price	Amount
0	55#	Caustic Soda -	\$23.00/ea	\$230.00
0	50#	CC-15	\$25.00/ea	\$250.00
				\$480.00
			4% SS Tax	19.20
				\$499.20
only		Single poly wrap on a non-returnable skid	\$9.95/ea	9.95
				509.15
				\$509.15

After 60 days, Interest of 1 1/2% will be charged on Declining Account Balance

ALL INVOICES NET 30 DAYS
 REMIT FROM THIS INVOICE - NO STATEMENTS ISSUED

COST CENTRE 6112 - SULLIVAN EXPLORATION

DESCRIPTION	A/P PURCHASE ITEM ORDER #	REF NO DR CLS	CHARGE TYPE	CHARGE	CURRENT HOURS	AMOUNT	TO DATE HOURS	AMOUNT
SULLIVAN EXPLORATION								
STAFF KING		LA 501	STAFF	.611200	872	12,793		
		TOTAL	STAFF	.611200	872	12,793 *	5,752	84,310 *
HEAVY EQUIPPER		LA 406	OP LAB	.611200	8	196		
HEAVY EQUIPPER		LA 406	OP LAB	.611234	8	196		
HEAVY EQUIPPER		LA 406	OP LAB	.611234	49	1,191		
LABOUR CREW C&F		LA 719	OP LAB	.611234	4	48		
LABOUR CREW		LA 907	OP LAB	.611200	4	45		
EQUIPPKING		LA 908	OP LAB	.611234	16	197		
		TOTAL	OP LAB	.611200	89	1,869 *	380	7,351 *
SANDWICHES		AP07401	OP MATL	.611200		56		
VANICAL REPROD	S19121V	AP07403	OP MATL	.611200		37		
HUGHES-ORNS	S13253V	AP07405	OP MATL	.611200		1,859		
AIKMAIS STUDIO	S24627	AP07416	OP MATL	.611200		6		
SC 100	MW5100	AP07426	OP MATL	.611200		12		
EXCEACER	MW51079K	AP07710	OP MATL	.611200		12		
LONGYCAR CANADA	MW51053	AP07710	OP MATL	.611200		19		
CAN PACIFIC	MW51063R	AP07711	OP MATL	.611200		105		
JUNE LOOMIS BILLS		JR07559	OP MATL	.611200		31		
CONTRACTORS		SU 140	OP MATL	.611200		4		
		TOTAL	OP MATL	.611200		2,206 *		98,522 *
CARPENTERS		LA 405	RPR LAB	.611200	4	98 *		
		TOTAL	RPR LAB	.611200	4	98 *	54	877 *
JINS OUTBOARD	MW5100	AP07434	RPR MATL	.611200		91		
		TOTAL	RPR MATL	.611200		91 *		441 *
FUELS & LUB		SU 160	FUEL	.611200		48		
		TOTAL	FUEL	.611200		48 *		137 *
PRICE EXCAV	KF8426R	AP07719	MISC	.611235		70		
PRICE EXCAV	KF8425R	AP07719	MISC	.611235		70		
HEAVY TRACTORS K-301		JR07019	MISC	.611200		100		
HEAVY TRACTORS K-301		JR07019	MISC	.611234		875		
HEAVY TRACTORS K-301		JR07019	MISC	.611234		275		
HEAVY TRUCKS JULY		JR07025	MISC	.611234		108		
CONTINGENT ACC		JR07512	MISC	.611200		3,505		
JUNE TEL BILLS		JR07528	MISC	.611200		13		
MEAL DIXIE LEE		JR07561	MISC	.611200		6		
JULY VAN LAB CHGS		JR07519	MISC	.611200		1,980		
WEST REPROD LTD		JR07690	MISC	.611200		15		
SOUTHERN INT EX		JR07551	MISC	.611235		185		
		TOTAL	MISC	.611200		7,203 *		31,572 *
		TOTAL CODE		.611200	955	24,298 **	6,186	223,209 **
		TOTAL COST CENTRE 6112				24,298		223,209

Commodities OTHER TO GO

DEGRADED	6434	6435	6436	6437
	196	70		
	1171	70		
	192	185		
	100	225		
	875			
	108			
	3,505			

* put in with W COST ACCT

7548

COST CENTRE 6112 - SULLIVAN EXPLORATION

DESCRIPTION	A/P PURCHASE		REF NO	CHARGE	CHARGE	CURRENT		TO DATE	
	ITEM	ORDER #				HOURS	AMOUNT	HOURS	AMOUNT
SULLIVAN EXPLORATION									
STAFF KIMB			LA 501	STAFF	.611200	1,044	15,738		
			TOTAL	STAFF	.611200	1,044	15,738 *	6,796	100,048 *
ADJ SHOP BASIC JULY/79			JEO8444	OP LAB	.611200		78-		
ADJ SHOP BASIC JULY/79			JEO8444	OP LAB	.611234		323-		
ADJ SHOP BASIC JUNE 79			JEO8444	OP LAB	.611234		559-		
ADJ SHOP BASIC JUNE 79			JEO8444	OP LAB	.611238		118-		
ADJ SHOP LABOUR AUG/79			JEO8444	OP LAB	.611238		39-		
ADJ SHOP BASIC JULY/79			JEO8444	OP LAB	.611238		78-		
LABOURGANG			LA 187	OP LAB	.611200	3	35		
HEAVYEQUIPPER			LA 406	OP LAB	.611234	4	98		
HEAVYEQUIPPER			LA 406	OP LAB	.611238	4	98		
			TOTAL	OP LAB	.611200	11	964-	391	6,387
WHALLEY LTD	F	S19341X	AP08403	OP MATL	.611200		616-		
VANCAL REPROD	F	S19121V	AP08407	OP MATL	.611200		60-		
SPERRY SUN	F	S19281V	AP08409	OP MATL	.611200		111-		
THIESSEN EQUIP		S19496T	AP08428	OP MATL	.611200		3,875-		
KOOT HYDRAULIC	F	S19472V	AP08430	OP MATL	.611234		812-		
THIESSEN EQUIP		S19496T	AP08440	OP MATL	.611200		390-		
MILLAR BROWN			AP08444	OP MATL	.611200		68-		
SANDNER BROS			AP08453	OP MATL	.611200		825-		
VANCAL REPROD		S19121V	AP08710	OP MATL	.611200		15-		
KYDVA0812 VUL PROP			JEO8051	OP MATL	.611200		1,275-		
STATIONERY			JEO8601	OP MATL	.611200		18-		
FERROUS METALS			SU 140	OP MATL	.611200		17-		
SIGNALS			SU 330	OP MATL	.611200		4-		
			TOTAL	OP MATL	.611200		5,505 *		104,028 *
ADJ SHOP LABOUR AUG/79			JEO8444	RPR LAB	.611200		59-		
ADJ SHOP BASIC JULY/79			JEO8444	RPR LAB	.611200		39-		
MACHINISTSURF			LA 205	RPR LAB	.611200	6	147		
			TOTAL	RPR LAB	.611200	6	49 *	60	926 *
			TOTAL	RPR MATL	.611200		*		441 *
FUELS & LUB			SU 160	FUEL	.611200		24		
			TOTAL	FUEL	.611200		24 *		161 *
SULLIVAN MOTORS		S19120V	AP08402	MISC	.611200		364		
MR MIKES			AP08444	MISC	.611234		21		
W BARKER		KF9410R	AP08450	MISC	.611234		251		
LONGYEAR		S18539L	AP08708	MISC	.611235		16,780		
HEAVYTRAC 5-301K-415AU			JEO8019	MISC	.611234		100		
HEAVYTRAC 5-301K-415AU			JEO8019	MISC	.611238		50		
JULY TEL CHGS			JEO8528	MISC	.611200		18		
			TOTAL	MISC	.611200		17,614 *		49,185 *
			TOTAL CODE		.611200	1,061	37,966 **	7,247	261,176 **
			TOTAL COST CENTRE 6112				37,966		261,176

7548

COST CENTRE 6112 - SULLIVAN EXPLORATION

DESCRIPTION	A/P PURCHASE ITEM ORDER #	REF NO OR CLS	CHARGE TYPE	CHARGE	C U R R E N T HOURS	AMOUNT	TO DATE HOURS	AMOUNT
SULLIVAN EXPLORATION								
STAFF KIMB		LA 501	STAFF	.611200	684	4,618 ✓		
		TOTAL	STAFF	.611200	684	4,618 *	7,480	104,666 *
		TOTAL	OP LAB	.611200		*	391	6,387 *
THIESSEN EQUIP F	S19496T	AP09410	OP MATL	.611200		9,324 ✓		
THIESSEN EQUIP F	S19703X	AP09411	OP MATL	.611200		270 ✓		
THIESSEN EQUIP	S19496T	AP09413	OP MATL	.611200		973 ✓		
MERIT	MW4624	AP09416	OP MATL	.611200		10 ✓		
THIESSEN EQUIP F	S19738	AP09420	OP MATL	.611234		249 ✓		
KIM STATION	MW4628	AP09429	OP MATL	.611200		7 ✓		
KIM STATION	MW4628	AP09429	OP MATL	.611200		4 ✓		
KIMB STATIONRS	MW4628	AP09430	OP MATL	.611200		2 ✓		
THIESSEN EQUIP F	S19790X	AP09441	OP MATL	.611200		4,076 ✓		
SHAW'S SALES	KFW5395	AP09447	OP MATL	.611237		5 ✓		
THIESSEN EQUIP F	S19830X	AP09448	OP MATL	.611200		509 ✓		
KITS CAMERAS	S19740V	AP09449	OP MATL	.611200		163 ✓		
LONGYEAR CAN LT	S18539L	AP09704	OP MATL	.611235		639 ✓		
LONGYEAR CAN LT	S18539L	AP09704	OP MATL	.611235		34,067 ✓		
LONGYEAR CAN LT	S18539L	AP09704	OP MATL	.611236		1,072 ✓		
LONGYEAR CAN LT	S18539L	AP09704	OP MATL	.611237		35,395 ✓		
LONGYEAR CAN LT	S18539L	AP09704	OP MATL	.611237		1,818 ✓		
LONGYEAR CAN LT	S18539L	AP09704	OP MATL	.611238		1,715 ✓		
IMPERIAL OIL LT	S17496V	AP09705	OP MATL	.611200		117 ✓		
IMPERIAL OIL LT	S17496V	AP09710	OP MATL	.611200		1,055 ✓		
LONGYEAR	S18539L	AP09712	OP MATL	.611234		29,189 ✓		
LONGYEAR INC	S18539L	AP09712	OP MATL	.611238		6,956 ✓		
IMPERIAL OIL	S17496V	AP09715	OP MATL	.611200		1,094 ✓		
IMPERIAL OIL	S17496V	AP09724	OP MATL	.611200		1,094 ✓		
LONGYEAR INC	S19241L	AP09728	OP MATL	.611234		310 ✓		
LONGYEAR INC	S19241L	AP09728	OP MATL	.611234		38,943 ✓		
BARKER CONT	KF9410R	AP09730	OP MATL	.611238		210 ✓		
BARKER CONT	KF9410R	AP09730	OP MATL	.611238		3 ✓		
STATS & ASSAY	JEO9601	OP MATL	.611200			20 ✓		
	TOTAL	OP MATL	.611200			166,104 *		270,132 *
MACHINISTSURF		LA 205	RPR LAB	.611200	1	17 ✓		
		TOTAL	RPR LAB	.611200	1	17 *	61	943 *
RYANS TIRE SUPP	MW4632	AP09433	RPR MATL	.611200		7 ✓		
		TOTAL	RPR MATL	.611200		7 *		448 *
FUELS & LUB		SU 160	FUEL	.611200		54 ✓		
		TOTAL	FUEL	.611200		54 *		215 *
DIXIE LEE CHIK		AP09405	MISC	.611234		7 ✓		
LONGYEAR	S18539L	AP09712	MISC	.611235		1,089 ✓		
LONGYEAR	S18539L	AP09712	MISC	.611237		1,167 ✓		
LONGYEAR	S18539L	AP09712	MISC	.611238		33,207 ✓		
BARKER CONTRACT	KF09410	AP09726	MISC	.611234		33 ✓		
BARKER CONTRACT	KF9410R	AP09726	MISC	.611234		93 ✓		

7548

COST CENTRE 6112 - SULLIVAN EXPLORATION

DESCRIPTION	A/P PURCHASE ITEM ORDER #	REF NO OR CLS	CHARGE TYPE	CHARGE	CURRENT HOURS	AMOUNT	TO DATE HOURS	AMOUNT
SULLIVAN EXPLORATION								
BARKER CONTRACT	KF9410R	AP09726	MISC	.611238		1,313		
AUG TEL BILLS		JE09528	MISC	.611200		7		
LONG YEAR		JE09653	MISC	.611200		2,565		
		TOTAL	MISC	.611200		39,416 *		88,601 *
		TOTAL CODE		.611200	685	210,216 **	7,932	471,392 **
TOTAL COST CENTRE 6112						210,216		471,392

	6434	35	36	37	38	all private
Longyear	67,856	35,775	(1072)	38,380	41,878	2565
OTHER	7			5		
BARKER	60				1144	
	67,923	35,775	(1072)	38,385	43,022	2565

7548