

**LONG LAC MINERAL EXPLORATION LIMITED**

SUITE 1680 - 1050 WEST PENDER STREET  
VANCOUVER, B.C. V6E 3S7  
(604) 685-0531

**DRILLING REPORT**

D.A. Claims, #1-#5, Gaspard Creek Area  
26 Kilometres West of the Gang Ranch, B.C.

Clinton Mining Division

92 0/10

Latitude:  $51^{\circ} - 35'$

Longitude:  $122^{\circ} - 42'$

Owner: Long Lac Mineral Exploration Ltd.

Operator: Long Lac Mineral Exploration Ltd.

R.S. Pegg, BA Sc.,  
Long Lac Mineral Exploration Ltd.  
1680 - 1050 West Pender St.,  
Vancouver,  
B.C. V6E 3S7



Dec. 1, 1979

## Table of Contents

Introduction	Page 1
Location	Page 1
Access	Page 1
Previous Work	Page 1
General Geology and Topography	Page 1
Index Map	Page 2
Work Completed	Page 3
Summary and Conclusions	Page 4
Statement of Qualifications	Appendix #1
Expenditure Breakdown	Appendix #2
(1) DA #1 - #2 Percussion Drill and Geochemical Plan	In Pocket
(2) DA #3 - #5 Percussion Drill and Geochemical Plan	In Pocket
Drill Logs	In Pocket

### Introduction

The following report is on a Percussion Drill Program carried out on the D.A. Claims (79 units), Gaspard Creek area, Gang Ranch, B.C. This report was written by Rex Pegg under the supervision of Mr. John Hogan, P. Eng. for Long Lac Mineral Exploration Ltd.

### Location

The claim group is situated approximately 26 kilometres west of the Gang Ranch, at latitude  $51^{\circ}-35'$  and longitude  $122^{\circ}-42'$  on map 920/10, Edition 1 MCE, Series A 721.

### Access

A dirt road, roughly paralleling Gaspard Creek, cuts through the claim area.

### Previous Work

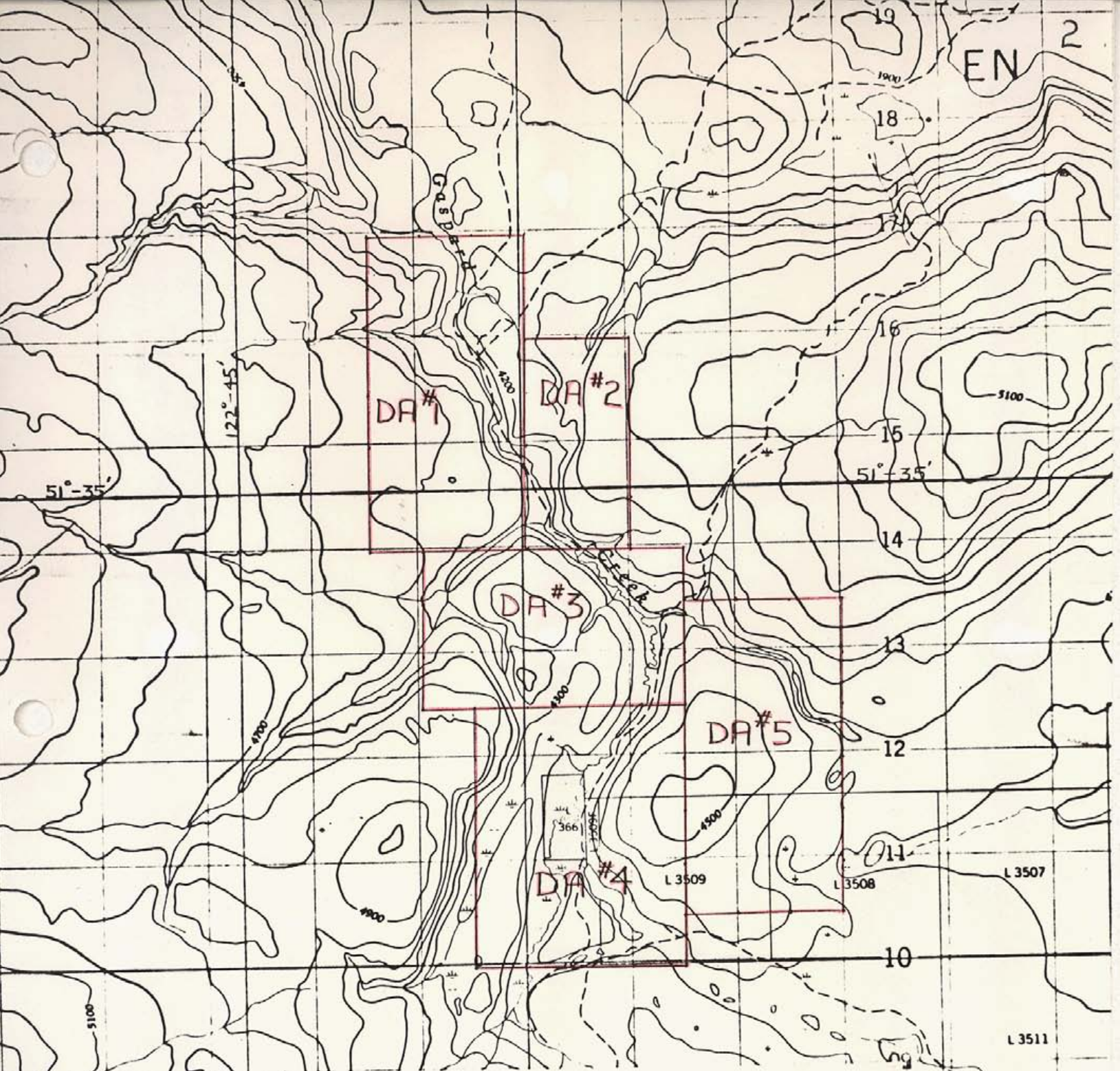
No previous work has been done on this claim area.

### General Geology and Topography

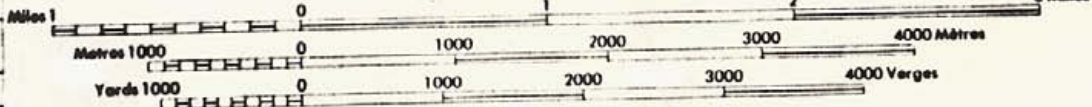
The major portion of the claims is covered (according to the G.S.C. Open File 534) by Miocene/Pliocene basalt. A small area of Miocene sediments, to the north and overburden, to the west, are also found within the claim area. The basement rocks are Middle Jurassic gneissic granodiorite to the west and Late Cretaceous quartz monzonite to the east and north.

The topography appears not to be too "rough" with a maximum relief of 120 metres. The land slopes down, into the middle of each claim (Gaspard Creek) and the vegetation consists of coniferous trees.

The target in this area is uranium mineralization in basal Miocene sediments.



Scale 1:50,000 Échelle



### Work Completed

During the period of June 19 to June 26, 1979 Mr. John Hogan, Alan Weston and the writer supervised a percussion drill program. This program consisted of six (6) percussion holes which were drilled to a total depth of 624.84 metres. In the DA#1 claim three percussion holes DA/1 (131.06 metres), DA/2 (70.10 metres) and DA/3 (131.06 metres) were drilled to a total depth of 332.22 metres. Percussion hole DA/4 was drilled, within the DA#2 claim, to a depth of 158.50 metres. In the DA#5 claim, the DA/5 percussion hole was drilled to a depth of 39.62 metres while in the DA#4 claim the DA/6 percussion hole went to a depth of 94.49 metres. Rock chips from the holes were checked with the McPhar TV-IA scintillometer.

Also during these period, sixteen silt samples were collected and analysed for gold and uranium. There were five samples from DA#1, three from DA#2, three silts from DA#3, four from DA#4 and one from DA#5.

### Laboratory Analysis

Bondar-Clegg and Company Ltd. of North Vancouver completed the analysis of the samples. Analytical procedures are as follows:

Au	-	fire assay preconcentration
	-	dissolution by aqua regia
	-	bead analysed by atomic absorption

U : 1) weighed on 0.5 gm.  
 2) digested in concentrated HNO<sub>3</sub>  
 3) bulked to 20% acid concentration and homogenized  
 4) allowed one hour setting time  
 5) analyse by reflectance fluorimetry  
 6) permanently recorded on chart paper

Summary and Conclusions

The geochemical silt survey within the claim area revealed only background amounts of gold and uranium.

The percussion drill program indicated an overburden depth of 21.3 to (possibly) greater than 73.2 metres. Two of the holes (DA/2 and DA/5) were stopped in overburden due to the tightening of the casing and the sticking of the rods. Percussion hole DA/1 seemed to indicate the presence of a basal Miocene sandstone which is found over a depth of at least 76.2 metres while DA/3 revealed a sequence of basalt with minor sandstone interbeds over a depth of at least 57.9 metres. The two percussion holes to the south, DA/4 and DA/6, indicated the presence of andesite and dacite-andesite over depths of at least 137.2 and 70.1 metres, respectively. This thick andesitic sequence maybe Eocene in age.

Scintillometer work done on the rock chips from the percussion holes revealed only background radiation, so the major drill target in the claim area would be beneath the andesitic cover, to the south. It appears that this volcanic cover (Eocene?) is too thick to warrant, further, percussion and possibly diamond drilling.

Respectfully submitted,

A handwritten signature in black ink, appearing to read 'Rex Pegg', with a long horizontal flourish extending to the right.

REX S. PEGG, B.A.Sc.

Long Lac Mineral Exploration Ltd.

APPENDICES

## Appendix 1

### Statement of Qualifications

- Mr. John Hogan : B.A.Sc., P. Eng.
- Mr. Rex Pegg : B.A.Sc. (University of Toronto, 1976)
- 1977-1979 LONG LAC MINERAL EXPLORATION LTD.  
geological engineer in B.C. doing geochemical and geologic reconnaissance and detail work.
- 1976 Winter WILLROY MINES LTD.  
mine geologist at Willroy Mines, Manitouwadge, Ont. doing geological mapping, sampling, core logging, compilation and drafting.
- 1976 Summer UNITED KENO EXPLORATION LTD.  
geological party chief in the Mayo area, Yukon looking for base and precious metals using geological reconnaissance and geochemistry.
- 1975 Summer LITTLE LONG LAC MINES LTD.  
geological assistant in the Bathurst Trench area, N.W.T. looking for uranium, gold and base metals using geophysics (scintillometers, Mag., E.M.) geological reconnaissance, staking and geochemical sampling.
- 1974 Summer MATTAGAMI LAKE MINES LTD.  
geological assistant in Ontario looking for base metals using geological mapping and geochemical sampling.
- 1974 Winter LITTLE LONG LAC MINES LTD.  
geophysics (V.L.F.) near Sturgeon Lake, Ont.
- 1973 Summer DOME EXPLORATION LTD.  
geological assistant in B.C., Manitoba, Ont. and Quebec, looking for gold, base metals, using prospecting, trenching and geochemistry.
- 1973 Winter TOM GLEDHILL AND ASSOCIATES LTD.  
geophysical operator in Ontario and Quebec, looking for base metals using mag., E.M. and I.P.
- 1972 Summer BARYMIN EXPLORATIONS LTD.  
geological assistant in Quebec, looking for base metals using geochemical sampling, some mapping and prospecting.



1971 Summer CANADA TUNGSTEN MINES LTD.  
geological assistant in the Yukon, N.W.T. and B.C.  
looking for tungsten using geochemical sampling  
(stream and rock), staking and U.V. lamping.

1969 Summer LEITCH GOLD MINES LTD.  
geological assistant in Quebec, looking for  
base metals using geochemistry, geophysics (E.M.  
and Mag.), line cutting and staking.

1968 Summer LEITCH GOLD MINES LTD.  
geological assistant in Quebec, looking for  
base metals using geochemistry, geophysics  
(E.M. and Mag.), line cutting and staking.

Mr. A. Weston-Student - 2.5 years of geology at Douglas College, Surrey, B.C.

1978 Summer LONG LAC MINERAL EXPLORATION LTD.  
&9 geological assistant in B.C.  
doing geochemical sampling, geophysics(scint.)  
,staking and line cutting.

APPENDIX 2

1) Percussion Drill Hole DA/1	June 19 - 20, 1979		
	depth = 131.06 metres = 430 feet		
a)	0-300 feet at \$4.90/foot	=	\$1,470.00
	300-430 feet at \$5.40/foot	=	\$ 702.00
	Total drill cost	=	\$2,172.00
b)	Hourly charges		
	June 20 2 hrs. setting casing (\$75/hour)		\$ 150.00
c)	Company expenditures		
	R. Pegg (2 days - logging and supervision at \$50/day)		\$ 100.00
	A. Weston (2 days - sampling at \$29/day)		\$ 58.00
	J. Hogan (2 days - logging and supervision at \$70/day)		\$ 140.00
	Total	=	\$ 298.00
	Total for DA/1	=	\$2,620.00
2) Percussion Drill Hole DA/2	June 21, 1979		
	depth = 36.58 metres = 120 feet		
a)	Total drill cost (\$4.90/foot)	=	\$ 588.00
b)	Hourly charges		
	June 21 2 hours setting casing (\$75/hour)		\$ 150.00
c)	Company expenditures		
	R. Pegg (1 day - at \$50/day)		\$ 50.00
	A. Weston (1 day)		\$ 29.00
	J. Hogan (1 day)		\$ 70.00
	Total	=	\$ 149.00
	Total for DA/2	=	\$ 887.00
3) Percussion Drill Hole DA/3	June 22, 1979		
	depth = 131.06 metres = 430 feet		
a)	0-300 feet at \$4.90/foot	=	\$1,470.00
	300-430 feet at \$5.40/foot	=	\$ 702.00
	Total drill charges	=	\$2,172.00

Appendix 2 continued

b)	Company expenditures		
	R. Fegg (0.75 days)	=	\$ 37.50
	A. Weston (0.75 days)	=	\$ 21.75
	J. Hogan (0.75 days)	=	\$ 52.50
	Total	=	\$111.75
	Total for DA/3	=	\$2,283.75
4)	Transportation costs		
	on property (3.75 days at \$47/day)	=	\$176.25
	drill rigs moving (4.5 hours at \$50/hour)		\$225.00
	Total	=	\$401.25
5)	Camp (3.75 days at \$30/day)	=	\$112.50
6)	Geochemistry		
	5 silt samples		
	Preparation 5 x \$0.45	=	\$ 2.25
	U          5 x \$2.90	=	\$ 14.50
	Au         5 x \$3.75	=	\$ 18.75
	Total	=	\$ 35.50
7)	Report (drafting, compilation, writing and printing)		\$200.00
	 Total expenditures on DA#1	=	 \$6,540.00

DA #2

1) Percussion Drill Hole DA/4	June 22 - 25, 1979
depth - 158.50 metres = 520 feet	
a)	
0-300 feet at \$4.90/foot	= \$1,470.00
300-520 feet at \$5.40/foot	= \$1,188.00
Total drill cost	= \$2,658.00
b)	
Hourly charges	
June 22 3 hours setting casing (\$75/hr.)	\$225.00
June 23 5 hours extra labour (\$20/hr.)	\$100.00
June 24 18 hours extra labour(\$20/hr.)	\$360.00
June 25 1 hour pulling casing (\$75/hr.)	\$ 75.00
Total hourly charges	= \$760.00
c)	
Company expenditures	
R. Pegg (2.35 days at \$50/day)	= \$117.50
A. Weston (2.35 days at \$29/day)	= \$ 68.15
J. Hogan (2.35 days at \$70/day)	= \$164.50
Total	= \$350.15
Total cost of DA/4	= \$3,768.15
2) Transportation Costs	
on property (2.35 days at \$47/day)	= \$110.45
drill rigs moving (1.7 hrs. at \$50/hour)	\$ 85.00
Total	= \$195.45
3) Camp (2.35 days at \$30/day)	= \$ 70.50
4) Geochemistry 3 silt samples	
Preparation 3 x \$0.45	= \$ 1.35
U 3 x \$2.90	= \$ 8.70
Au 3 x \$3.75	= \$ 11.25
Total	= \$ 21.30
5) REport (drafting, compilation, writing and printing)	\$100.00
Total expenditures on DA#2	= \$4,155.40

DA #3

1) Geochemistry	3 silts		
	Preparation	3 x \$0.45	= \$1.35
	U	3 x \$2.90	= \$8.70
	Au	3 x \$3.75	= \$11.25
	Total		= \$21.30
2) Moving Costs			
	0.8 hrs. at \$50.00/hr.		= \$40.00
3) Report (drafting compilation, writing and printing)			\$50.00
	Total expenditures on DA#3		= \$111.30

DA #4

1) Percussion Drill Hole DA/6	June 26, 1979	
Depth = 94.49 metres = 310 feet		
a)	0-300 feet at \$4.90/foot	= \$1,470.00
	300-310 feet at \$5.40/foot	= \$ 54.00
	Total drill cost	= \$1,524.00
b)	Hourly charges	
	June 26 2 hrs. setting casing ( \$75/hr. )	= \$150.00
	2 hours pulling casing ( \$75/hr. )	= \$150.00
	Total hourly charges	= \$300.00
c)	Company expenditures	
	R. Pegg (1 day)	= \$ 50.00
	A. Weston (1 day)	= \$ 29.00
	J. Hogan (1 day)	= \$ 70.00
	Total	= \$149.00
	Total cost of DA/6	= 1,973.00
2) Transportation costs		
	on property (1 day at \$47/day)	= \$47.00
	drill rigs moving (1.7 hrs. at \$50/hr.)	= \$85.00
	Total	= \$132.00
3) Camp (1 day at \$30/day)		= \$ 30.00
4) Geochemistry	4 silt samples	
	Preparation 4 x \$0.45	= \$ 1.80
	U 4 x \$2.90	= \$11.60
	Au 4 x \$3.75	= \$15.00
	Total	= \$28.40
5) Report (drafting, compilation, writing and printing)		\$100.00
	Total expenditure on DA#4	= \$2,263.40

DA #5

1) Percussion Drill Hole DA/5		June 25, 1979	
Depth = 39.62 metres - 130 feet			
a) 0-130 feet at \$4.90/foot	=		\$637.00
Total drill cost	=		\$637.00
b) Hourly charges			
June 25 3 hrs. setting casing (\$75/hr.)	=		\$225.00
Total hourly charges	=		\$225.00
c) Company expenditures			
R. Pegg (0.90 days)	=		\$ 45.00
A. Weston (0.90 days)	=		\$ 26.10
J. Hogan (0.90 days)	=		\$ 63.00
Total	=		\$134.10
Total cost of DA/5	=		\$996.10
2) Transportation costs			
on property (0.90 days at \$47/day)			\$42.30
moving drill rigs (1.8 hrs. at (\$50/hr.)	=		\$ 90.00
Total	=		\$132.30
3) Camp costs (0.90 days at \$30/day)	=		\$27.00
4) Geochemistry			
1 silt sample			
Preparation 1 x \$0.45	=		\$ 0.45
U 1 x \$2.90	=		\$ 2.90
Au 1 x \$3.75	=		\$ 3.75
Total	=		\$ 7.10
5) REport (drafting, compilation, writing and printing)			\$100.00
Total expenditures on DA#5	=		\$1,262.50

# GEOLOG

## DRILL HOLE GEOLOGIC LOG

COMPANY LONG LAC MINERAL EXPLORATION

PROPERTY: DA

LOGGED BY

R. Pegg

DATE June 20, 1979

WELL NUMBER DA/1

PAGE 1

1

Interval (metres)	Description	Elevation (metres)
0.0 - 6.1	metres Casing (to 18.3 metres)	1229
6.1 - 9.1	soft ; grey clay ; black basalt chips	
9.1 - 12.2	" ; " (decreasing clay content); hornblende basalt and dark very siliceous chips	
12.2 - 15.2	" ; " ; granodiorite, basalt and reddish altered chips	
15.2 - 18.3	" ; brown sandy (coarse) ; granodiorite, basalt and white feldspathic (siliceous, amygdaloidal) chips; fine pyrite specks in basalt	
18.3 - 21.3	" ; " ; chips	
21.3 - 24.4	" ; " (medium) ; " and white feldspathic chips with minor hematite (after pyrite)	
24.4 - 27.4	" ; " ; mostly black basalt chips	
27.4 - 30.5	" ; light brownish grey (minor clay) ; amygdaloidal basalt and minor intrusive chips (not plentiful)	
30.5 - 33.5	" ; very light brownish grey (increasing clay) ; rare basalt and intrusive chips	
33.5 - 36.6	" ; " (sandy) ; a few black basalt and pink quartz monzonite chips	
36.6 - 39.6	" ; " ; " (fine) and quartz grains	
39.6 - 42.7	" ; " ; " (numerous); hematite (trace)	
42.7 - 45.7	" ; " ; "	
45.7 - 48.8	" ; " ; "	
48.8 - 51.8	" ; minor clay light brownish " ; " ; "	
51.8 - 54.9	" ; " ; mostly quartz and quartz-feldspar chips (fine)	
54.9 - 61.0	" medium ; " ; Basal Miocene Sandstone (?)	
61.0 - 64.0	" ; very " ; "	
64.0 - 67.1	" ; " ; "	
67.1 - 131.1	" ; " ; (altered)	

at 117.3 metres clay seam

END OF HOLE



*R. Pegg*



# GEOLOG

## DRILL HOLE GEOLOGIC LOG

COMPANY LONG LSC MINERAL EXPLORECTION PROPERTY: DA

BY R. Pegg DATE June 21/79

DA/2

1/1

0.0 - 24.4 metres, soft

; overburden (sand and boulders) ; casing

Elevation: 1222 metres

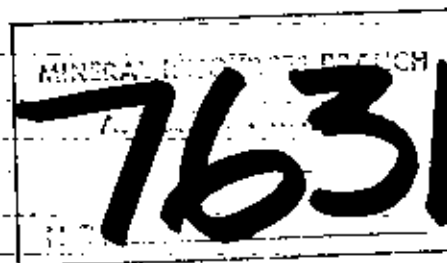
15.2 - 24.4 metres, soft

; overburden (sand and gravel)

24.4 - 36.6 metres, soft

; overburden (sand and gravel); caving

END OF HOLE - casing tight at 24.4 metres and continually getting tighter with increased drilling.



*R. Pegg*

# GEOLOG

## DRILL HOLE GEOLOGICAL LOG

COMPANY LONG ESC MINERAL EXPLORATION

PROPERTY: DA

LOGGERS: R. Pegg

DATE: June 21-22/79

DA/3

0.0 - 21.3 metres, soft	; casing	Elevation: 1223 metres
21.3 - 24.4 metres, soft	; gravel; hit large basalt boulder at 21.3 metres (2.4 metres thick); basalt chips; brownish grey	
24.4 - 30.5 metres, soft	; sandy, minor clay; quartz grains and basalt chips; brown	
30.5 - 33.5 metres, soft	; sandy ; quartz grains and basalt chips; brown	
33.5 - 48.8 metres, soft	; sandy (a little coarser); quartz grains ; brown	
48.8 - 64.0 metres, soft	; sandy ; " ; brown	
64.0 - 73.2 metres, soft	; sandy ; quartz grains and minor basalt chips (cave?), rose quartz and light tan feldspars	
73.2 - 100.6 metres, harder	; sandy ; quartz grains, lack of rose quartz and increase in black basalt	
100.6 - 118.9 metres, hard and soft (50:50) boulders (?) or more indurated sections	; sandy ; quartz grains, lack of rose quartz and greater increase in black basalt	
118.9 - 125.0 metres, hard	; sandy ; quartz grains, lack of rose quartz and greater increase in black basalt	
125.0 - 129.5 metres, medium hard	; sandy ; quartz grains, lack of rose quartz and greater increase in black basalt.	
129.5 - 131.1 metres, hard	; sandy ; quartz grains, lack of rose quartz and greater increase in black basalt	

END OF HOLE -- hole caving since 100.6 metres, any deeper risky, had to use water to pull rods back to 100.6 metres

MINERAL EXPLORATION  
**7631**  
 NO.

*R. Pegg*

# GEOLOG

## DRILL HOLE GEOLOGIC LOG

DA/4

COMPANY LONG LSC MINERAL EXPLORATION

PROPERTY DA

LOG BY R. Pegg

DATE June 23/79

PAGE 1

- 0.0 - 9.1 metres, soft ; casing Elevation: 1227 metres
- 9.1 - 21.3 metres, soft; brown ; gravel
- 21.3 - 24.4 metres, hard ; numerous dark and light green chips; Andesite (white feldspar phenocrysts) and light green altered Andesite
- 24.4 - 27.4 metres, slightly softer than hard ; numerous dark and light green chips; Andesite (white feldspar phenocrysts) and light green altered Andesite
- 27.4 - 36.6 metres, hard ; numerous dark and light green chips; Andesite (white feldspar phenocrysts) and light green altered Andesite, minor carbonate
- 36.6 - 39.6 metres, hard (smaller chips) ; numerous dark and light green chips; Andesite (white feldspar phenocrysts) and light green altered Andesite, minor carbonate
- 39.6 - 79.2 metres, hard (a bit softer) ; numerous dark and light green chips; Andesite (white feldspar phenocrysts) and light green altered Andesite, minor carbonate
- 79.2 - 82.3 metres, hard (last 0.9 metres soft-white water); numerous dark and light green chips; Andesite (white feldspar phenocrysts) and light green altered Andesite, minor carbonate
- 82.3 - 158.5 metres, hard (a bit softer) ; numerous dark and light green chips; Andesite (white feldspar phenocrysts) and light green altered Andesite, minor carbonate

END OF HOLE

7631

*R. Pegg*

# GEOLOG

## DRILL HOLE GEOLOGIC LOG

DA/S

COMPANY LONG LAC MINERAL EXPLORATION PROPERTY: DA

LOGGERS J. Hogan

DATE June 25-26/79

PAGE 1 of 1

0.0 -39.6 metres, soft; overburden (sand and gravel)

Elevation: 1254 metres

at 27.4 - 30.5 metres, boulders at 29.0 metres hole making water

at 0.0 - 36.6 metres, casing

at 33.5 -36.6 metres casing cut off water inflow

END OF HOLE - at 39.6 metres because casing very tight and rods sticking.



*R.P.*

# GEOLOG

## DRILL HOLE GEOLOGIC LOG

COMPANY LOGS LSC MINERAL EXPLORATION

PROPERTY: DA

BY: R. Pegg

DATE: June 29/79

DA/6

1 of 1

Elevation: 1254 metres

0.0-24.4 metres casing

12.2-15.2 metres, soft : brown gravel

15.2-24.4 metres, soft ; grey gravel

24.4-27.4 metres, hard ; purple andesite for about 1.5 metres then into green porphyritic andesite

27.4-30.5 metres, hard ; green andesite

30.5-33.5 metres, hard ; green andesite and a narrow sequence of purple andesite

33.5-42.7 metres, hard ; green andesite, minor carbonate and pyrite

42.7-45.7 metres, hard ; green andesite, minor carbonate

45.7-48.8 metres, hard ; green andesite, minor carbonate and purple andesite

48.8-57.9 metres, hard ; green andesite, minor carbonate

57.9-61.0 metres, hard ; green andesite

61.0-67.1 metres, hard ; light green dacite-andesite chips predominate with lesser green andesite

67.1-70.1 metres, hard ; first 2.1 metres, water reddish brown; only a few brown chips but rest same as above.

70.1-76.2 metres, hard ; brownish water; a few brown (reddish) andesite chips but mostly green and light green

76.2-79.2 metres, hard ; slight brownish water; a few brown (reddish) andesite chips but mostly green and light green

79.2-82.3 metres, hard ; slight brownish water and light grey; same as above

82.3-85.3 metres, hard ; brown water ; same as above

85.3-88.4 metres, hard ; slight brown, mostly light grey ; same as above

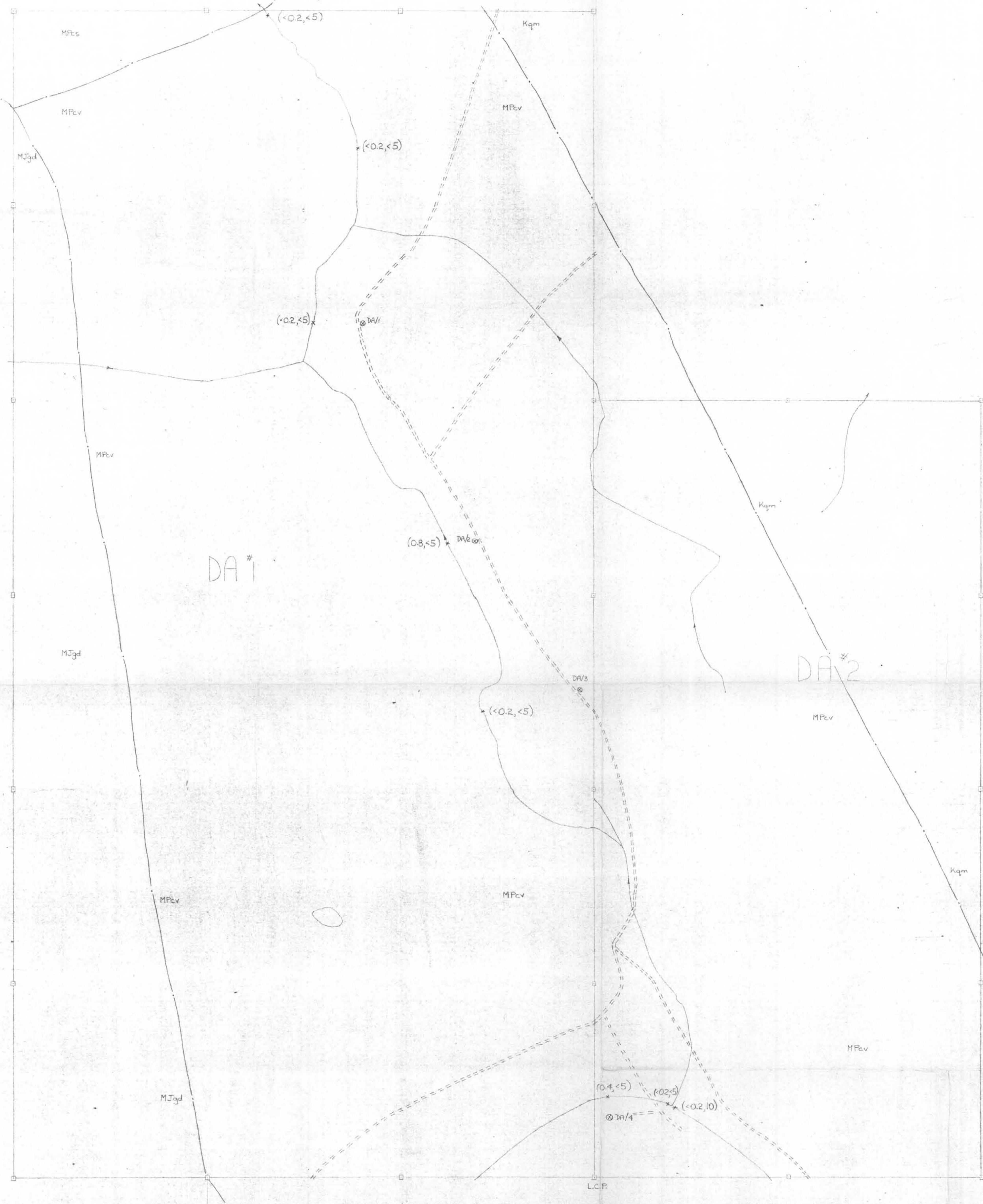
88.4-91.4 metres, hard ; brown then light grey, then greyish brown water; same as above

91.4-94.5 metres, hard ; light grey water ; same as above

END OF HOLE casing very tight  
volcanics too thick (possibly Eocene?)

MINERAL EXPLORATION  
**7631**

*R. Pegg*



**LEGEND**

- Claim Post
- == Road
- Creek
- DA/1 ⊗ Percussion Drill Hole
- MPEs Miocene Sediments
- MPcv Miocene Volcanics
- Kqm Quartz Monzonite (CRETACEOUS)
- MJgd Gneissic Granodiorite, Diorite (JURASSIC)
- (1,5) x Silt Sample (ppm. Uranium, p.p.b. Gold)
- Geological Contact (from G.S.C. O.F. 534)

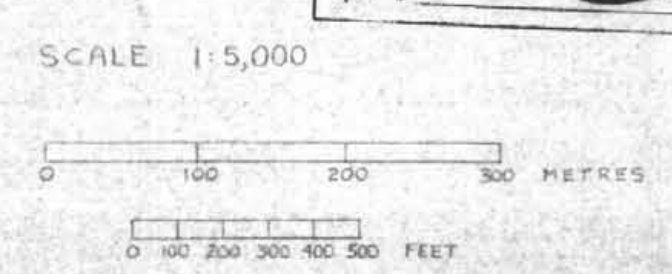
Survey by chain and compass

To accompany Assessment Report by R.S. Pegg, B.A.Sc. on the DA group of claims, Gaspard Ck. Area, Gang Ranch, B.C.; Clinton M.D. dated Dec. 1, 1979

LONG LAC MINERAL EXPLORATION LTD.  
 PERCUSSION DRILL and GEOCHEMICAL PLAN  
 DA CLAIMS 1-2  
 GASPARD CREEK, B.C.

DATE: NOV. 17, 1979  
*Rex Pegg*  
 REX PEGG

MINERAL RESOURCES BRANCH  
**7631**



DA #1

DA #2

DA #3

DA #5

DA #4

DA/6



LEGEND

- Claim Post
- ≡≡ Road
- Creek
- DA/1 \* Percussion Drill Hole
- ovb Overburden
- MPcv Miocene Volcanics
- Kgm Quartz Monzonite (Cretaceous)
- MGd Gneissic Granodiorite, Diorite (Jurassic)
- (1,5) x Silt Sample (ppm Uranium, ppb Gold)
- v Swamp
- Geological Contact (from G.S.C. QF. 534)

Survey by chain and compass

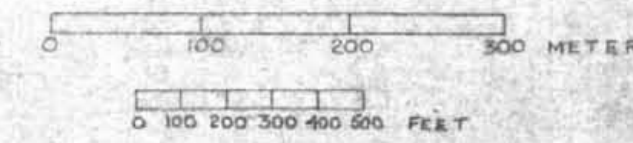
To accompany Assessment Report by R. S. Pegg, B.A.Sc. on the DA group of claims, Gaspard Cr. Area, Gang Ranch, B.C.; Clinton M.D., dated Dec. 1, 1979.

GEOCHEMICAL and  
PERCUSSION DRILL PLAN  
DA CLAIMS #1-5  
GASPARD CREEK, B.C.

DATE: NOV. 15, 1979

*R. S. Pegg*  
REX PEGG

SCALE 1:5,000



MINERAL RESOURCES BRANCH  
ASSESSMENT REPORT  
**7631**  
NO.