

Assessment Report  
on a  
Geochemical Soil Sampling Survey  
of portions of the  
Rod E Mineral Claim  
(16 units)

Situated on the North Fork  
of  
Siwash Creek  
Coquihalla Gold Belt  
New Westminster Mining Division  
N.T.S. 92H/11W

Field Work July 24, 25, and 26, 1979  
and August 23, 27, 1979.

on behalf of

AQUARIUS RESOURCES LTD.

MINERAL RESOURCES BRANCH  
ASSESSMENT REPORT  
**7675**  
NO

Report by

D. R. Cochrane, P. Eng.  
October 15, 1979  
Delta, B. C.



Cochrane Consultants Limited  
4882 Delta St., Delta, B.C. V4K 2T8 946-8221  
Geotechnical Consulting / Exploration Services

geology  
geophysics  
geochemistry

## TABLE OF CONTENTS

	Page
INTRODUCTION .....	1
LOCATION AND ACCESS .....	2
CLAIMS INFORMATION .....	3
GENERAL SETTING .....	4
FIELD PROCEEDURES .....	5
DISCUSSION OF RESULTS .....	7

### FIGURES

1. Location Map	Report body
2. Claims map	" "
53R Geochemical Data	Map Pocket

### APPENDICES

I (a)	Geochemical Analysis Data Sheets, South Grid
I (b)	Geochemical Analysis Data Sheets, North Grid
II	Certificate
III	Assessment Work Details

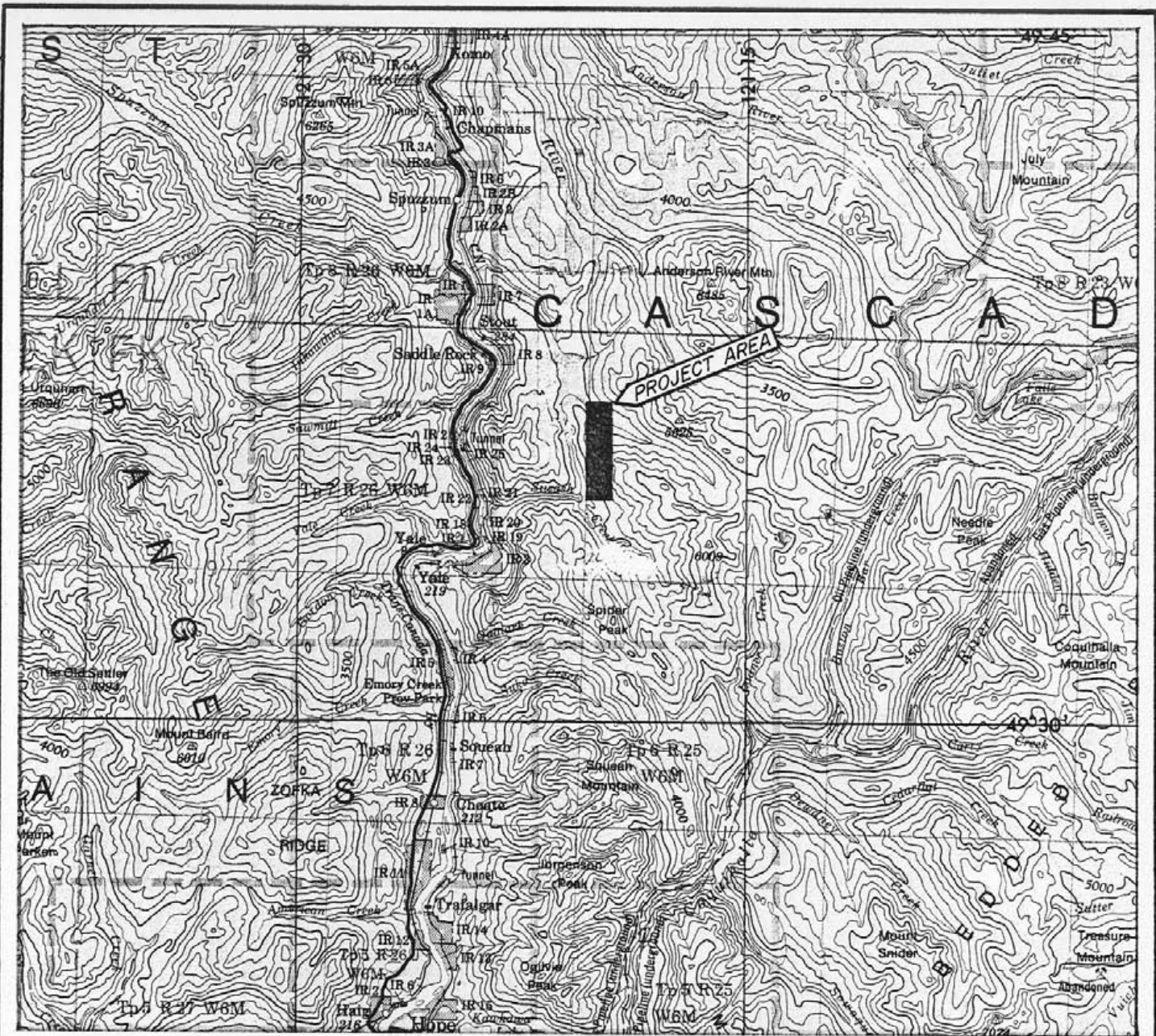


INTRODUCTION

Late in July 1979, an experienced field crew under the direction of Mr. J. Stewart conducted soil sampling surveys on portions of the Rod E claim. The reconnaissance type work is part of an ongoing exploration program along the Coquihalla Gold Belt of Southern British Columbia.

This report describes the work done and results obtained and contains assessment work details listed in an appendix at the back of this report.





**AQUARIUS RESOURCES LTD.**

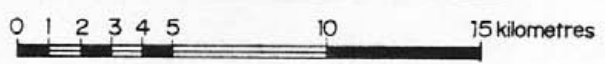
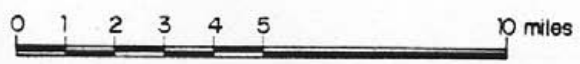
Rod E Claim  
Spuzzum, B.C.

New Westminster Mining Division  
92H/11W

Figure 1  
Location Map

from E.M.B.R. "Hope" sheet.

Scale : 1 to 250,000 or 1 inch equals approx. 4 miles.



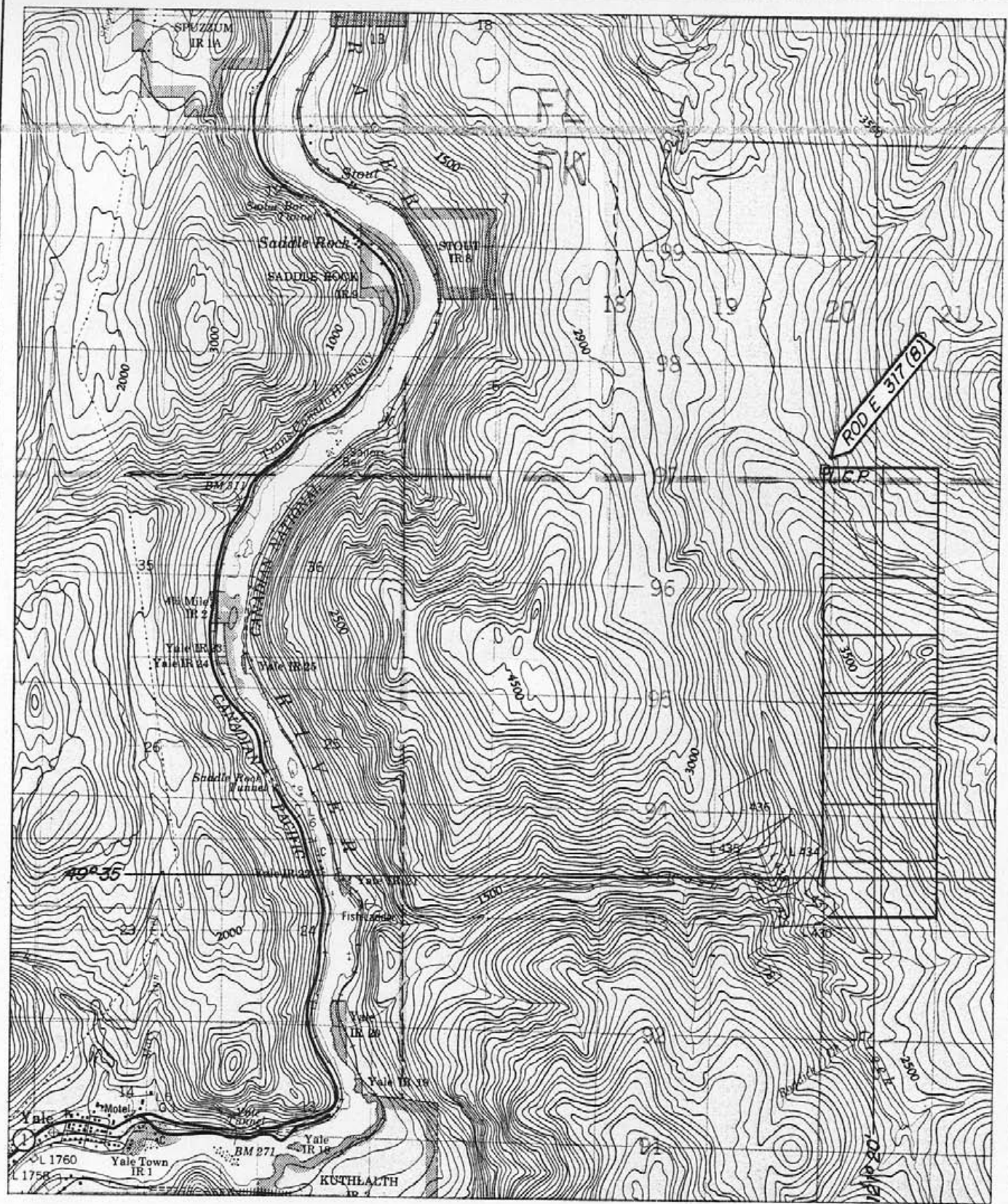
LOCATION AND ACCESS

The Rod E claim is located a few kilometres south east of Spuzzum, a small settlement north of Hope, in the Fraser Canyon. Normal access is by truck north from Spuzzum on highway No. 1, across the Alexandra Bridge, then right turn onto a gravel road which leads up Hidden Creek. The area is actively logged and arrangements must be made with Catermole Logging prior to access. The Hidden Creek road proceeds southeasterly, and a right turn onto the Siwash Creek Road is made near Mile 8. The north claim boundary is some 4 road kilometres south on the Siwash Creek Access Road. The road proceeds southerly and to the west of the Rod E claim and further access is on foot.

The latitude is 49°35'N; longitude 121°20'W.







**AQUARIUS RESOURCES LTD.**

Rod E Claim  
Spuzzum, B.C.  
Figure 2.

New Westminster Mining Division  
92H/11W.  
from E.M.B.R. "Spuzzum" sheet.

Claims Map

Scale: 1:50,000



B.A.C./ 10-79



Cochrane Consultants Limited  
4883 Delta St., Delta, B.C. V4K 2T8 944-0221

CLAIMS INFORMATION

The Rod E Mineral claim is composed of sixteen (16) units, two units wide (East-West) and eight units long. It is owned by Aquarius Resources Ltd. and registered in the New Westminster Mining Division.

The following table contains claims information .

CLAIM NAME	NO. UNITS	RECORD NO.	Anniversary Date	
			before crédits	after credits
Rod E	16	317	Aug. 11/79	Aug. 11/81



GENERAL SETTING

The Rod E claim lies in the Cascade Mountains of British Columbia, and for the most part lies on the west facing flank of a rather prominent north south ridge. Elevations on the property vary from just over 500 metres above sea level in the southwest corner to just above 1200 metres above sea level. The area is fairly rugged and well forested with fir, spruce and cedar. Several branches of Siwash Creek cut the claims and traverses in the steep tributaries are rather difficult.

The claim lies to the east of the Hozameen Fault and serpentine band in an area of Jurassic Ladner Slates but very close to the contact of the Needle Peak granodiorite pluton located immediately east of the east boundary of the claim.

The area is extensively covered with overburden and upper B horizon soil development in the area may be described in general as "fair".





FIELD PROCEDURES

The field crew flagged and chained a base line from near the south boundary of the claim due northerly a distance of just less than one kilometre. From this baseline eight east-west cross lines were chained and flagged, the cross lines being 100 metres apart, and stations and sample intervals at 50 metres apart. There is a total of 7.5 line kilometres of reconnaissance grid on the south end, and a total of 116 soil samples collected from the upper B soil horizon.

A second reconnaissance type sample grid, in the form of two long traverse lines, was completed near the north end of the claim. The two lines are roughly parallel, about 250 metres apart and are southeasterly directed. They are both 3 kilometres long and soil samples were collected at 50 metre intervals along the two lines, however the northwest and southeast ends of the lines extend beyond the Rod E claim. A total of 125 soil samples were collected from the upper B soil horizon.



At each sample point a small hole was excavated with a grub hoe, to a depth varying from one to several decimetres, and a sample of soil placed into a prenumbered kraft paper geochemical sample bag. The bag was folded, closed, and placed in a knapsack. At the end of the day the samples were strung and allowed to air dry. Finally they were sealed in cardboard cartons and delivered to Min-En Labs of North Vancouver, where they were analyzed for gold content.



DISCUSSION OF RESULTS

The gold content of the upper B horizon soil samples collected on the Rod E Mineral Claim ranged from a low of less than 5 parts per billion (ppb), which is below the detection limit, to a high of 460 ppb. (a high of 1100 ppb Au was recorded just off the claims area and approximately 300 metres due west of the legal corner post of the Rod E). Within the Coquihalla Gold Belt gold values in excess of 15 ppb are normally considered possibly anomalous, values above 45 ppb as probably anomalous, and values above 75 ppb as anomalous. There are a total of ten (10) samples that contain values in excess of 75 ppb Au and the most widespread anomalous zone occurs near the east end of lines 2 and 3 south on the southern grid. Since the geochemical work was of a reconnaissance type only, it is herein recommended that more detailed work be conducted in and around every sample containing in excess of 45 ppb gold in soils. (See accompanying map).



Respectfully submitted



D. R. Cochrane, P. Eng.

October 25, 1979

Delta, B. C.



APPENDIX I (a)

GEOCHEMICAL ANALYSIS DATA SHEETS

SOUTH GRID



GEOCHEMICAL ANALYSIS DATA SHEET

PROJECT No: 20-20

MIN - EN Laboratories Ltd.

DATE: Aug. 2,

ATTENTION: H. Madeisky

705 WEST 15th ST., NORTH VANCOUVER, B.C. V7M 1T2  
PHONE (604) 980-5814

1979.

Sample Number	As ppm	Pb ppm	Zn ppm	Ni ppm	Co ppm	Ag ppm	Fe ppm	Hg ppb	As ppm	Mn ppm	Au ppb					
6	10	15	20	25	30	35	40	45	50	55	60	65	70	75	80	
81	84	90	95	100	105	110	115	120	125	130	135	140	145	150	155	160
IML0+00-0+00												75				
0+50W												10				
1+00W												20				
1+50W												15				
2+00W												5				
2+50W												10				
IML0+00-3+00W												10				
IML0+00-0+50E												30				
1+00E												5				
1+50E												15				
2+00E												5				
2+50E												5				
3+00E												10				
IML0+00-4+00E												5				
IML1+00S0+00												5				
0+50W												10				
1+00W												5				
1+50W												45				
IML1+00S2+50W												460				
IML1+00S0+50E												10				
1+00E												10				
1+50E												5				
2+00E												15				
2+50E												5				
3+00E												5				
3+50E												25				
IML1+00S4+00E												20				
IML2+00S0+00												5				
0+50W												5				
IML2+00S1+00W												10				

GEOCHEMICAL ANALYSIS DATA SHEET

FILE No. 9-434

PROJECT No. 20-20

MIN-EN Laboratories Ltd.

DATE: Aug. 2  
 1979.

705 WEST 15th ST., NORTH VANCOUVER, B.C. V7M 1T2  
 PHONE (604) 980-5814

ATTENTION: H. Madeisky

Sample Number	6	10	15	20	25	30	35	40	45	50	55	60	65	70	75	80	
	Ag ppm	Cd ppm	Pb ppm	Zn ppm	Ni ppm	Co ppm	Ag ppm	Fe ppm	Hg ppb	As ppm	Mn ppm	Au ppb					
	81	86	90	95	100	105	110	115	120	125	130	135	140	145	150	155	160
IML 2+00S1+50W													6.5				
2+00W													6.5				
IML 2+00S2+50W													6.5				
IML 2+00S0+50E													6.5				
1+00E													10				
1+50E													20				
2+00E													6.5				
2+50E													10				
3+00E													6.5				
3+50E													15				
5+00E													15.5				
5+50E													50				
IML 2+00S6+00E													6.5				
IML 4+00S0+00													5				
0+50E													25				
1+00E													10				
1+50E													20				
2+00E													5				
2+50E													20				
3+00E													10				
3+50E													5				
5+00E													10				
5+50E													5				
6+00E													5				
6+50E													6.5				
IML 4+00S7+00E													5				
IML 5+00S0+00E													5				
0+50E													10				
1+00E													5				
IML 5+00S1+50E													5				



COMPAN

GEOCHEMICAL ANALYSIS DATA SHEET

FILE No. 9-434

PROJECT No. 20-20

MIN - EN Laboratories Ltd.

DATE: Aug. 2,  
 1979.

705 WEST 15th ST., NORTH VANCOUVER, B.C. V7M 1T2  
 PHONE (604) 980-5814

ATTENTION: H. Madeisky

6	10	15	20	25	30	35	40	45	50	55	60	65	70	75	80	
Sample Number	Cd ppm	Cu ppm	Pb ppm	Zn ppm	Ni ppm	Co ppm	Ag ppm	Fe ppm	Hg ppb	As ppm	Mn ppm	Au ppb				
81	86	90	95	100	105	110	115	120	125	130	135	140	145	150	155	160
IML 5+00	S2+00E											15				
	2+50E											70				
	3+00E											10				
	3+50E											5				
	4+00E											45				
	4+50E											5				
	5+00E											5				
	5+50E											5				
	6+00E											5				
	6+50E											5				
IML 5+00	S7+00E											45				
IML 1+00	N0+50W											5				
	1+00W											45				
	1+50W											5				
	2+00W											45				
	2+50W											10				
	3+00W											5				
IML 1+00	N3+50W											5				
IML 1+00	N0+00											25				
	0+50E											15				
	1+00E											20				
	1+50E											10				
	2+00E											20				
	2+50E											20				
	3+00E											15				
IML 1+00	N3+50E											5				
IML 2+00	N0+50W											45				
	1+00W											10				
	1+50W											5				
IML 2+00	N2+00W											5				

CERTIFIED BY

COMPAN: \_\_\_\_\_  
 PROJECT No.: 20-20  
 ATTENTION: H. Madeisky

Sample Number	6	10	15	20	25	30	35	40	45	50	55	60	65	70	75	80
	Mg	Pb	Zn	Ni	Co	Ag	Fe	Hg	As	Mn	Au					
	ppm	ppm	ppm	ppm	ppm	ppm	ppm	ppb	ppm	ppm	ppb	ppm	ppb			
81	86	90	95	100	105	110	115	120	125	130	135	140	145	150	155	160

IML 3+0	0.50	0.0											<.5			
	0+50E												.5			
	1+00E												<.5			
	1+50E												10			
	2+00E												<.5			
	2+50E												.5			
	3+00E												<.5			
	3+50E												<.5			
	4+00E												.5			
	4+50E												10			
	5+00E												3.30			
	5+50E												2.20			
IML 3+0	0.56	0.0E											<.5			

COMPAL

AQUARIUS RESOURCES  
Cochrane Consultants

## GEOCHEMICAL ANALYSIS DATA SHEET

FILE No. 9-434

PROJECT No. 20-20

MIN - EN Laboratories Ltd.

DATE: Aug. 2,  
1979.705 WEST 15th ST., NORTH VANCOUVER, B.C. V7M 1T2  
PHONE (604) 980-5814

ATTENTION: H. Madeisky

Sample Number	6 Hg ppm	10 Cu ppm	15 Pb ppm	20 Zn ppm	25 Ni ppm	30 Co ppm	35 Ag ppm	40 Fe ppm	45 Hg ppb	50 As ppm	55 Mn ppm	60 Au ppb	65	70	75	80
81	85	90	95	100	105	110	115	120	125	130	135	140	145	150	155	160
IML 2+00		2+50W						*				5				
		3+00W						*				135				
IML 2+00		0N3+50W						*				10				
IML 2+00		0N0+00						*				10				
		0+50E						*				5				
		1+00E						*				5				
		1+50E						*				5				
		2+00E						*				65				
		2+50E						*				10				
		3+00E						*				10				
		3+50E						*				65				
IML 2+00		0N4+00E						*				5				

CERTIFIED BY



APPENDIX I (a)  
GEOCHEMICAL ANALYSIS DATA SHEETS  
NORTH GRID



COMPAL

Aquarius Resources  
Cochrane Consultants

## GEOCHEMICAL ANALYSIS DATA SHEET

No. 9-583

PROJECT No.: IM &amp; RE

MIN-EN Laboratories Ltd.

DATE: Sept. 5

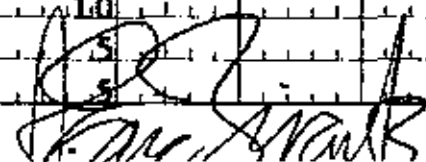
705 WEST 15th ST., NORTH VANCOUVER, B.C. V7M 1T2  
PHONE (604) 980-5814

1979.

ATTENTION:

6	10	15	20	25	30	35	40	45	50	55	60	65	70	75	80	
Sample Number	As ppm	Cu ppm	Pb ppm	Zn ppm	Ni ppm	Co ppm	Ag ppm	Fe ppm	Hg ppb	As ppm	Mn ppm	Au ppb				
81	85	90	95	100	105	110	115	120	125	130	135	140	145	150	155	160
REL0+00-0+00E												5				
0+50E												35				
1+00E												140				
1+50E												15				
2+00E												30				
2+50E												20				
3+00E												40				
3+50E												40				
4+00E												25				
4+50E												20				
5+00E												15				
5+50E												20				
6+00E												110				
6+50E												15				
7+00E												15				
7+50E												20				
8+00E												25				
8+50E												65				
9+00E												70				
9+50E												10				
10+00E												15				
10+50E												10				
11+00E												10				
11+50E												5				
12+00E												10				
12+50E												5				
13+00E												5				
13+50E												10				
14+00E												5				
REL0+00-14+50E												5				

CERTIFIED BY



COMPAS

Cochrane Consultants

## GEOCHEMICAL ANALYSIS DATA SHEET

No. 9-583

PROJECT No: RE &amp; IM

MIN - EN Laboratories Ltd.

DATE: Sept. 5,

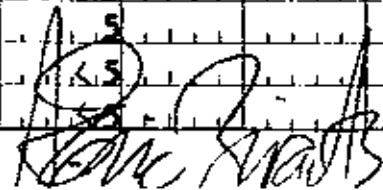
705 WEST 15th ST., NORTH VANCOUVER, B.C. V7M 1T2  
PHONE (604) 980-5814

1979.

ATTENTION:

Sample Number	Mg ppm	Cu ppm	Pb ppm	Zn ppm	Ni ppm	Co ppm	Ag ppm	Fe ppm	Hg ppb	As ppm	Mn ppm	Au ppb			
6	10	15	20	25	30	35	40	45	50	55	60	65	70	75	80
81	86	90	100	105	110	115	120	125	130	135	140	145	150	155	160
REL 0+00-15+00E												5			
15+50E												<5			
16+00E												5			
16+50E												5			
REL 0+00-17+00E												5			
REL 2+50S0+00W												5			
0+50W												5			
1+00W												10			
1+50W												5			
2+00W												5			
2+50W												5			
3+00W												10			
3+50W												5			
4+00W												<5			
4+50W												10			
5+00W												5			
5+50W												5			
6+00W												10			
6+50W												<5			
7+00W												<5			
7+50W												5			
8+00W												5			
8+50W												10			
9+00W												5			
9+50W												5			
10+00W												5			
10+50W												<5			
11+00W												5			
11+50W												5			
REL 2+50S12+00W												5			

CERTIFIED BY





## GEOCHEMICAL ANALYSIS DATA SHEET

No. 9-583

PROJECT No. RE &amp; IM

MIN - EN Laboratories Ltd.

DATE: Sept. 5

705 WEST 15th ST., NORTH VANCOUVER, B.C. V7M 1T2  
PHONE (604) 980-5814

1979.

ATTENTION:

Sample Number	Mo ppm	Sr ppm	Pb ppm	Zn ppm	Ni ppm	Co ppm	Ag ppm	Fe ppm	Hg ppb	As ppm	Mn ppm	Au ppb				
6	10	15	20	25	30	35	40	45	50	55	60	65	70	75	80	
81	85	90	95	100	105	110	115	120	125	130	135	140	145	150	155	160
REL 2+50S13+00E												1.0				
	13+50E											1.5				
	14+00E											6.5				
	14+50E											5				
	15+00E											5				
	15+50E											6.5				
	16+00E											5				
	16+50E											5				
REL 2+50S17+00E												6.5				
REL 0+00-0+50W												5				
	1+00W											5				
	1+50W											5				
	2+00W											6.5				
	2+50W											6.5				
	3+00W											6.5				
	3+50W											6.5				
	4+00W											5				
	4+50W											6.5				
	5+00W											1.0				
	5+50W											5				
	6+00W											6.5				
	6+50W											1.0				
	7+00W											5				
	7+50W											5				
	8+00W											6.5				
	8+50W											6.5				
	9+00W											5				
	9+50W											6.5				
	10+00W											6.5				
REL 0+00-10+50W												6.5				

COMPAL

Aquarius Resources  
Cochrane Consultants

## GEOCHEMICAL ANALYSIS DATA SHEET

C No. 9-583

PROJECT No.: RE &amp; IM

MIN-EN Laboratories Ltd.

DATE: Sept. 5

705 WEST 15th ST., NORTH VANCOUVER, B.C. V7M 1T2  
PHONE (604) 980-5814

1979.

ATTENTION:

6	10	15	20	25	30	35	40	45	50	55	60	65	70	75	80
Sample Number	Cd ppm	Pb ppm	Pb ppm	Zn ppm	Ni ppm	Co ppm	Ag ppm	Fe ppm	Hg ppb	As ppm	Mn ppm	Au ppb			
81	86	90	95	100	105	110	115	120	125	130	135	140	145	150	160
REL 0+00-11+00W												25			
												1100			
												40			
												20			
												20			
												20			
REL 0+00-14+00W												10			

CERTIFIED BY

GEOCHEMICAL ANALYSIS DATA SHEET

PROJECT No.: RE & IM

MIN-EN Laboratories Ltd.

DATE: Sept. 5

705 WEST 15th ST., NORTH VANCOUVER, B.C. V7M 1T2  
PHONE (604) 980-5814

1979

ATTENTION:

6	10	15	20	25	30	35	40	45	50	55	60	65	70	75	80	
Sample Number	Ni ppm	Cu ppm	Pb ppm	Zn ppm	Ni ppm	Co ppm	Ag ppm	Fe ppm	Hg ppb	As ppm	Mn ppm	Au ppb				
81	86	90	95	100	105	110	115	120	125	130	135	140	145	150	155	160

REL 2+50S0+50E																	
	1+00E																
	1+50E																
	2+00E																
	2+50E																
	3+00E																
	3+50E																
	4+00E																
	4+50E																
	5+00E																
	5+50E																
	6+00E																
	6+50E																
	7+00E																
	7+50E																
	8+00E																
	8+50E																
	9+00E																
	9+50E																
	10+00E																
	10+50E																
	11+00E																
	11+50E																
	12+00E																
REL 2+50S12+50E																	

*[Handwritten signature]*

CERTIFIED BY

PROJECT No. **RE & IM**

**MIN-EN Laboratories Ltd.**

DATE: **Sept. 5**

705 WEST 15th ST., NORTH VANCOUVER, B.C. V7M 1T2  
PHONE (604) 980-5814

ATTENTION:

**1979**

6	10	15	20	25	30	35	40	45	50	55	60	65	70	75	80	
Sample Number	* Zn ppm	* Cu ppm	Pb ppm	Zn ppm	Ni ppm	Co ppm	Ag ppm	Fe ppm	Hg ppb	As ppm	Mn ppm	Au ppb				
81	86	90	95	100	105	110	115	120	125	130	135	140	145	150	155	160
<b>REL 2+50S12+50W</b>								*								
								*								
		<b>13+00W</b>						*								
		<b>13+50W</b>						*								
<b>REL 2+50S14+00W</b>								*								
								*								

*Ken Evans*

APPENDIX II

CERTIFICATE

I, Donald Robert Cochrane of the Municipality of Delta, British Columbia, do hereby certify that:

1. I am a consulting geological engineer with an office at 4882 Delta Street, Delta, British Columbia. V4K 2T8.
2. I am a graduate of the University of Toronto (1962) with a degree in Applied Geology (B.A.Sc.) and a graduate of Queen's University (1964) with a degree in Economic Geology (M.Sc. Eng.).
3. I have practiced my profession continuously since graduation and while being employed by such companies as Noranda Exploration Co. Ltd., Quebec Cartier Mines, and Meridian Explorations Syndicate. I have been in private independent practice since 1969.
4. I have no interest, either direct or indirect in the properties or securities of Aquarius Resources Ltd., nor do I expect to acquire any such interest.
5. I am a member in good standing of the Association of Professional Engineers (A.P.E.) of the Province of British Columbia, and also a member of the A.P.E. in the Provinces of Ontario, Saskatchewan, Alberta and the Yukon Territories.



D. R. Cochrane, P. Eng.  
October 15, 1979

Delta, B. C.



APPENDIX III

ASSESSMENT WORK DETAILS

South Grid

J. A. Stewart, Supervisor, July 24, 27, 1979.  
Field Person, July 24, 25, 26, 1979.  
Helper, July 25, 25, 26, 1979.  
Field Person, July 25, 26, 27, 1979.  
Helper, July 24, 25, 26, 1979.  
D. R. Cochrane, P. Eng. report preparation  
Draftsperson and typist, report preparation

North Grid

J. A. Stewart, supervisor, August 23, 31, 1979.  
Field Person, August 23, 24, 1979.  
Helper, August 23, 24, 1979.  
Field Person, August 23, 24, 1979.  
Helper, August 23, 24, 1979.  
D. R. Cochrane, P. Eng. report preparation  
B. A. Cochrane, prospector/draftsman, August 27, 1979.  
Draftspersons and Typist, report preparation

Cont'd.....



## APPENDIX III (cont'd)

COST STATEMENTSouth Grid

Prospector, 2 half days at \$200/day.....	\$ 200.00
Field Person, 2 days at \$75/day .....	150.00
Helper, 2 days at \$75/day .....	150.00
Field Person, 2 days at \$75/day .....	150.00
Helper, 2 days at \$75/day .....	150.00
D. R. Cochrane, P. Eng. 1/4 day at \$250/day..	62.50
Food and Accomodation, 9 man days at \$25/day .....	225.00
Vehicle expense, 3 4x4's, 2 days at \$35/day/truck .....	210.00
Lab costs, 116 soil samples analyzed for Au at \$4.50/sample .....	522.00
Drafting, 9.5 hrs at \$14.85/hr.....	141.08
Typing, 2.5 hrs at \$10/hr .....	25.00
Reproduction .....	34.42
	<hr/>
Total .....	\$2,020.00

Cont'd....





## APPENDIX III (cont'd)

COST STATEMENTNorth Grid

Supervisor, 1 1/2 days at \$200/day .....	\$ 300.00
Field Person, 2 days at \$75/day .....	150.00
Helper, 2 days at \$75/day .....	150.00
Field Person, 2 days at \$75/day .....	150.00
Helper, 2 days at \$75/day .....	150.00
D. R. Cochrane, P. Eng. 1/4 day at \$250/day..	62.50
B. A. Cochrane, 1/2 day at \$120/day .....	60.00
Food and Accomodation, 10 man days at \$25/man day .....	250.00
Vehicle expense, 3 4x4's, 2 days at \$35/day/truck .....	210.00
Lab costs, 125 soil samples analyzed for Au.. at \$4.50/sample .....	562.50
Drafting, 9.5 hrs at \$14.85/hr .....	141.08
Typing, 2.5 hrs at \$10/hr.....	25.00
Reproduction .....	34.42
	<hr/>
Total .....	\$2,245.50
Total South Grid .....	\$2,020.00
Total North Grid .....	\$2,245.50
	<hr/>
Total Project Costs .....	\$4,265.50

Cont'd...



APPENDIX III (cont'd)

STATEMENTS OF EXPLORATION AND DEVELOPMENT DETAILS

South Grid, filed for assessment credits  
August 13, 1979:

Applied to Rod E Claim .....	\$ 1,600.00
Credited to P.A.C. account.....	420.00
	<hr/>
Total .....	\$ 2,020.00

North Grid, filed for assessment credits  
with receipt of this report:

Applied to Rod E Claim .....	\$ 1,600.00
Credited to P.A.C. account.....	645.50
	<hr/>
Total .....	\$ 2,245.50





MINERAL RESOURCES BRANCH  
ASSESSMENT REPORT  
**71675**  
NO.

Area: **N.Fork Siwash**

Claims: Spuz A, B, C, G, Rodd A, Rod D, E

Legend:

- Station (Branton & Chain)
- Station (Transit & Chain)
- Sail Sample Station
- Cut Line & Station
- Road - 4 X 4, Cat.

N.S. No Sample  
Note: Samples from "B" Soil Horizon.

Overlays:

- A TITLE BLOCK
- B ROADS, DRAINAGE & GRIDS
- C CLAIMS (Unit X - Claim)
- L GEOCHEMICAL DATA (Au, p.p.b.)

**AQUARIUS RESOURCES LTD.**

Spuz Project  
Spuzzum, British Columbia.

New Westminster Mining Division  
N.T.S.: 92H/11W.

Scale: 1:5,000

0 50 100 200 300 400 500m (1" = 4166')

Map by Pacific Survey Corp., 1977, from photos 1972. Datum: G.S.C. Traced P.K.C., Sept. 1978. Claims, grids, & survey stations from various Comdty plans. Date of this map: October, 1979. Revised: To accompany a report by D.R. COCHRANE, P. Eng. on the Rod E claim dated October 15, 1979 at Delta, B.C.

**GEOCHEMICAL DATA (Au, p.p.b.)**

**ROD E CLAIM**

Figure 53<sub>R</sub>

**PROFESSIONAL ENGINEER**

**Cochrane Consultants Limited**  
4882 Delta St. Delta B.C. V4K 2T8 946-9221

