

Adanac Drilling Report on the
Adera 3, Adera 5 FR, & Adera 6 Mineral Claims

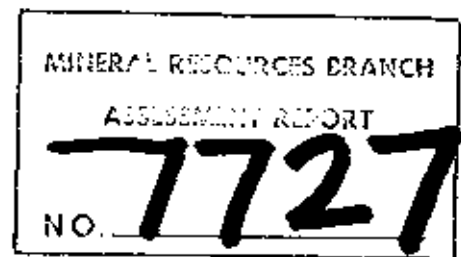
59° 43' N., 133° 24' E.
N.T.S. 104N/11W

Atlin Mining Division

Owned By:
Adanac Mining and Exploration Ltd.

Operated By:
Placer Development Limited

By: S.J. Tennant



January 1980

PART 1 083

TABLE OF CONTENTS

	<u>Page</u>
Introduction	1
Location Map (Scale 1:250,000)	2
Drilling Report	3
Appendix A - Statement of Drilling Cost	
Appendix B - Statement of Qualification	

In Pocket

Drill Location Map (Scale 1:2000) showing the drill hole locations in relationship to the claim boundaries.

Bound Separately

Drill logs for holes P.D.L. 200 - P.D.L. 238 (includes survey and assay data).

SJT/np
January 24, 1980

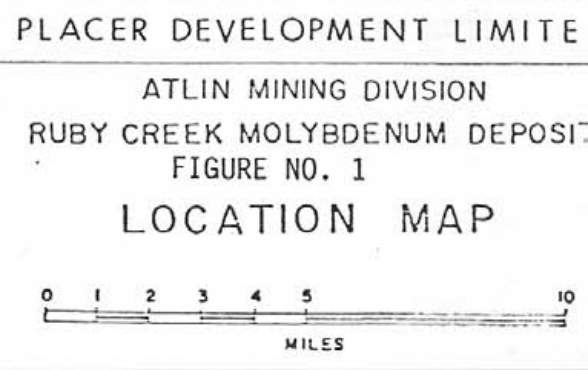
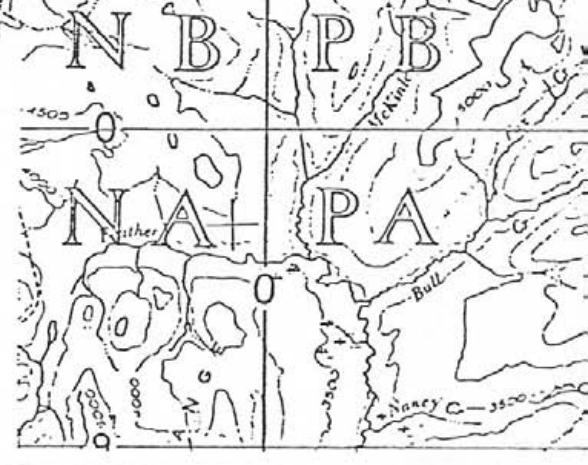
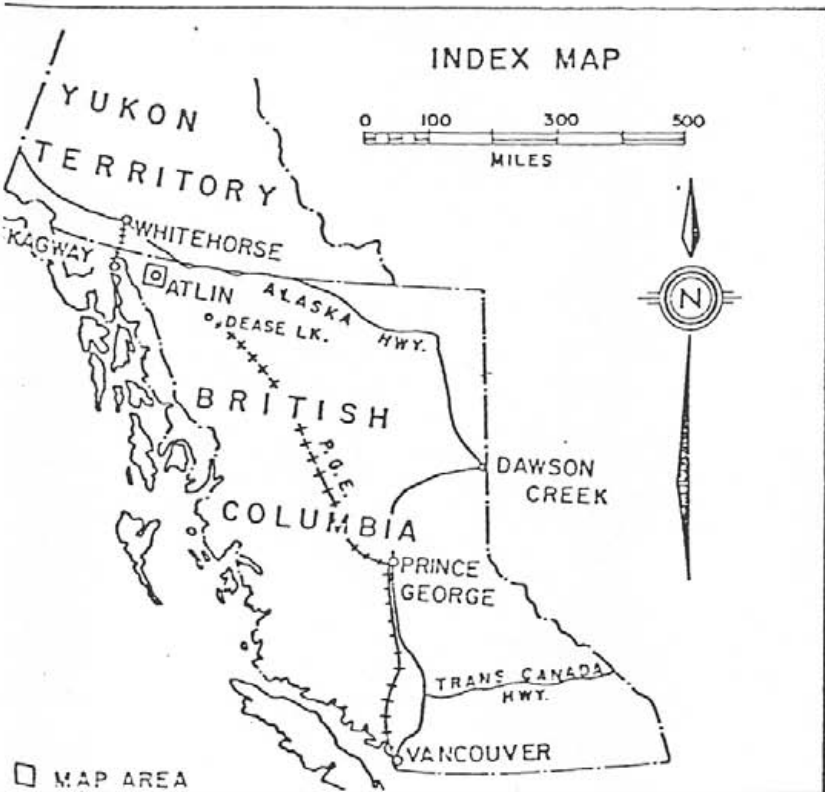
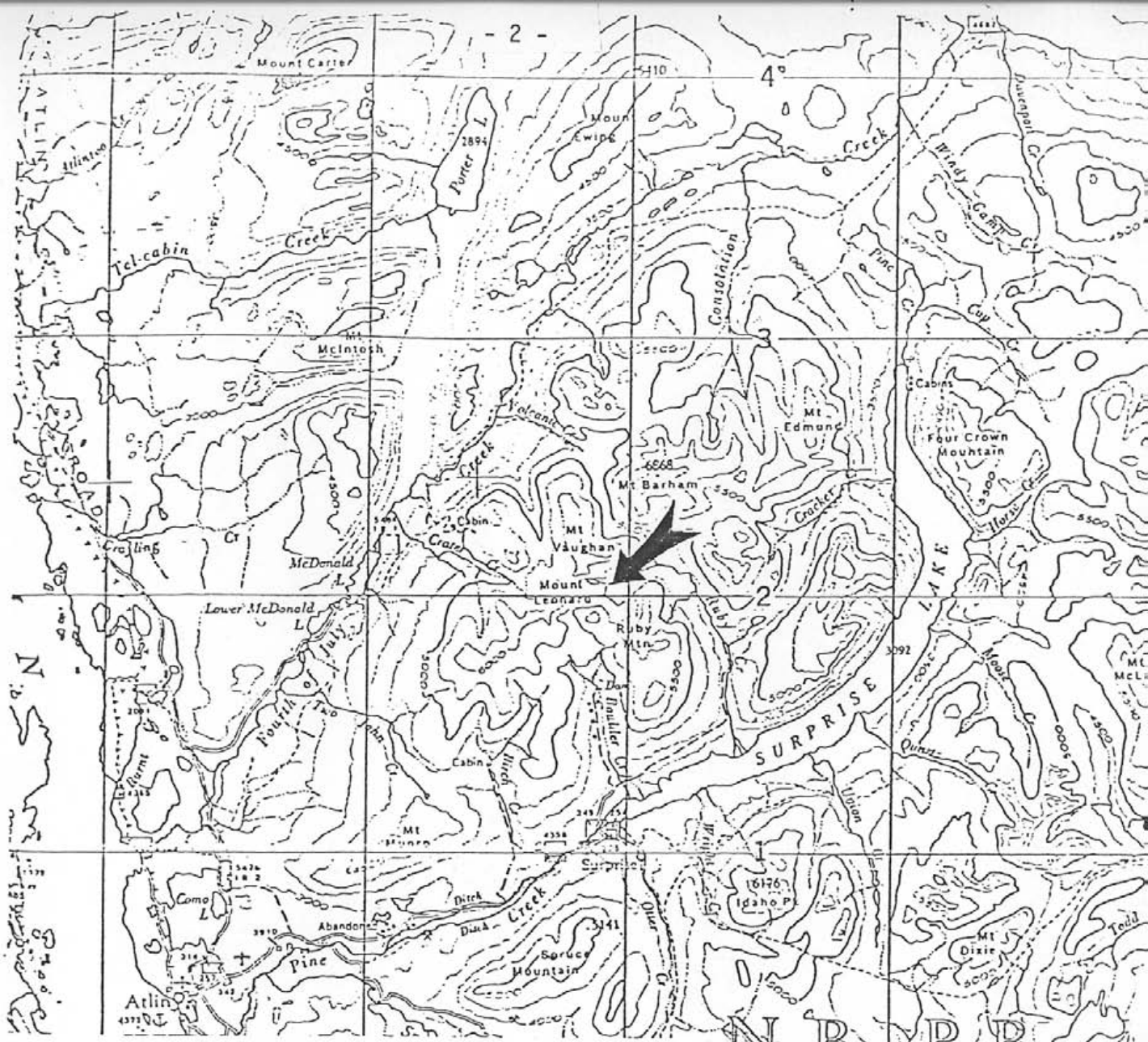
INTRODUCTION

The Adanac property is located within the Atlin Mining Division in the northwestern part of British Columbia, approximately 40 km northeast of the town of Atlin. The geodetic coordinates are 59° 42' N, 133° 24' W.

The property is accessible from Atlin via a 38 km gravel road. The first 19 km to the Surprise Lake bridge is graded and in good condition.

The Adanac molybdenum deposit is a bulk low grade type of deposit. The principal mineral of economic importance is molybdenite (MoS_2). The property was staked for Adanac Mining and Exploration Co. Ltd. in 1967. During the 1968 field season, a geochemical survey was carried out and a drill program consisting of 12 diamond drill holes, totalling 1,502 metres was completed. In 1969, 68 diamond drill holes totalling 11,273 metres were completed on a major grid pattern over the deposit. During 1970-71, Kerr-Addison carried out an extensive grid diamond drill program and a major underground bulk sampling program. Between 1971 and 1978, modest exploration programs were carried out by Adanac, Noranda Mines Ltd. and the Climax Molybdenum Co. In December, 1978, an agreement was reached between Placer Development Limited and Adanac for additional work and possible future development of the deposit.

SJT/np
January 24, 1980



DRILLING REPORT

During the period June to September 1979, a 39 hole diamond drilling program was completed on the Adanac property. The drill collar survey data is as follows:

<u>DDH</u>	<u>Northing</u>	<u>Easting</u>	<u>Elevation</u>	<u>Length(m)</u>	<u>Dip</u>
PDL 200	6,620,288.7	589,873.7	1,474.0	122.5	-90 ⁰
201	6,620,251.1	589,860.4	1,474.9	116.4	-90 ⁰
202	6,620,264.6	589,888.6	1,471.0	103.0	-90 ⁰
203	6,620,318.7	589,856.8	1,476.1	121.9	-90 ⁰
204	6,620,347.4	589,843.2	1,477.0	120.1	-90 ⁰
205	6,620,304.9	589,831.6	1,479.0	121.9	-90 ⁰
206	6,620,260.8	589,821.1	1,482.2	76.5	-90 ⁰
207	6,620,289.4	589,805.3	1,485.2	122.5	-90 ⁰
208	6,620,404.7	589,811.3	1,491.5	121.9	-90 ⁰
209	6,620,315.7	589,790.3	1,488.2	122.2	-90 ⁰
210	6,620,371.3	589,760.3	1,499.8	121.9	-90 ⁰
211	6,620,344.9	589,774.9	1,492.1	121.9	-90 ⁰
212	6,620,332.8	589,752.1	1,495.1	121.9	-90 ⁰
213	6,620,376.8	589,828.7	1,483.4	120.1	-90 ⁰
214	6,620,312.2	589,722.0	1,499.8	122.5	-90 ⁰
215	6,620,360.7	589,801.4	1,487.5	121.9	-90 ⁰
216	6,620,288.1	589,733.4	1,494.8	122.5	-90 ⁰
217	6,620,279.7	589,783.5	1,488.5	121.9	-90 ⁰
218	6,620,227.7	589,767.5	1,488.3	121.9	-90 ⁰
219	6,620,180.0	589,791.8	1,486.2	118.9	-90 ⁰
220	6,620,256.7	589,713.3	1,497.1	121.0	-90 ⁰
221	6,620,176.9	589,723.2	1,493.5	121.9	-90 ⁰
222	6,620,193.7	589,752.3	1,489.6	121.9	-90 ⁰
223	6,620,148.6	589,667.9	1,496.1	121.9	-90 ⁰
224	6,620,120.2	589,613.3	1,500.4	121.9	-90 ⁰
225	6,620,092.9	589,699.4	1,498.2	121.9	-90 ⁰
226	6,620,123.6	589,755.3	1,489.9	117.7	-90 ⁰
227	6,620,386.9	589,657.9	1,537.9	169.8	-90 ⁰
228	6,620,437.5	589,761.9	1,513.7	163.4	-90 ⁰
229	6,620,150.5	589,809.2	1,481.9	106.7	-90 ⁰
230	6,620,398.9	589,606.2	1,545.7	183.5	-90 ⁰
231	6,620,284.3	589,667.6	1,508.4	145.4	-90 ⁰
232	6,620,299.9	589,619.8	1,527.0	153.0	-90 ⁰
233	6,620,427.9	589,663.8	1,532.4	167.9	-90 ⁰
234	6,620,452.3	589,719.8	1,520.4	149.3	-90 ⁰
235	6,620,402.7	589,744.1	1,516.5	153.0	-90 ⁰
236	6,620,330.4	589,685.0	1,512.5	165.2	-90 ⁰
237	6,620,347.5	589,643.0	1,530.2	168.3	-90 ⁰
238	6,620,375.0	589,688.9	1,527.9	160.6	-90 ⁰

SJT/np
January 24, 1980

The main objectives of the drilling program were to determine if an upgrading of assay values could occur through improved core recovery over previous drilling programs and also to improve reliability of assay data through improved sample handling techniques.

All of the holes were drilled within the proposed Stage 1 pit area on the Adera 3, Adera 5 Fr, and Adera 6 claims. The deposit occurs within an area of local geological complexity within the Mt. Leonard Boss. The Mt. Leonard Boss is a composite plug of quartz monzonite which is peripheral, and probably related to the main body of the Surprise Lake batholith, to the east. The Mt. Leonard Boss is early Tertiary in age. In the area drilled the boss consists of five main rock units: coarse-grained quartz monzonite, mafic quartz monzonite porphyry, sparse quartz monzonite porphyry, crowded quartz monzonite porphyry and fine-grained quartz monzonite. Molybdenite is found in a wide variety of fractures and quartz veins cutting all five rock types. The fractures are widely spread and erratically distributed.

All holes were drilled vertically and averaged about 125 m. in length. Dip tests were not taken. By drilling NQ wireline series and using an improved bit design, along with a polymer mud, the drilling program was a technical success. Core recovery averaged +90% compared with 70-80% in previous drilling programs. The core was logged and 10 ft. samples made up. Preparation of samples for assaying was handled at the property in a well established bucking room. Considerable care was taken to standardize the procedure so as to have continuity of the sample handling. The entire core was crushed and samples prepared for assay, then shipped to Placer Development's metallurgical lab in Vancouver. The samples were assayed for MoS_2 and assay results recorded as Mo. The rejects were shipped to Vancouver for further metallurgical testing.

APPENDIX A

ADANAC DRILLING COSTS

DDH - 200 23/6/79 - 26/6/79

Caron Diamond Drilling Invoice #559 (402 ft.)	\$9,046.00
Camp Operations 8 men @ \$30.00/man day x 3 days	720.00
Drilling Charges & Consumables	874.00
Assay Costs 38 samples @ \$22/sample	836.00
PDL Labour Cost 4 men @ \$378.29/day x 3 days	<u>1,134.87</u>
	<u>\$12,610.87</u>

DDH - 201 26/6/79 - 29/6/79

Caron Diamond Drilling Invoice #559 (364 ft.)	\$7,371.00
Camp Operations 8 men @ \$30.00/day x 3 days	720.00
Drilling Charges & Consumables	967.20
Assay Cost 36 samples @ \$22/sample	792.00
PDL Labour Cost 4 men @ \$378.29/day x 3 days	<u>1,134.87</u>
	<u>\$10,985.07</u>

DDH - 202 29/6/79 - 2/7/79

Caron Diamond Drilling Invoice #559 & 572 (338 ft.)	\$6,919.00
Camp Operations 8 men @ \$30.00/man day X 3 days	720.00
Drilling Charges & Consumables	702.10
Assay Costs 33 samples @ \$22.00/sample	726.00
PDL Labour Costs 4 men @ \$378.29/day x 3 days	<u>1,134.87</u>
	<u>\$10,201.97</u>

DDH - 203 2/7/79 - 5/7/79

Caron Diamond Drilling Invoice #572 (400 ft.)	\$8,313.50
Camp Operations 8 men @ \$30.00/ man day x 3 days	720.00
Drilling Charges & Consumables	614.90
Assay Costs 38 samples @ \$22.00/sample	836.00
PDL Labour Costs 4 men @ \$378.29/day x 3 days	<u>1,134.87</u>
	<u>\$11,619.27</u>

DDH - 204 5/7/79 - 8/7/79

Caron Diamond Drilling Invoice #572 (394 ft.)	\$8,133.25
Camp Operations 8 men @ \$30.00/man day x 3 days	720.00
Drilling Charges & Consumables	475.30
Assay Costs 38 samples @ \$22.00/sample	836.00
PDL Labour Costs 4 men @ \$378.29/day x 3 days	<u>1,134.87</u>
	<u>\$11,299.42</u>

ADANAC DRILLING COSTS CONT'DDDH - 205

8/7/79 - 11/7/79

Caron Diamond Drilling	Invoice #572 (401 ft.)	\$8,238.75
Camp Operations	8 men @ \$30.00/man day x 3 days	720.00
Drilling Charges & Consumables		870.78
Assay Costs	38 samples @ \$22.00/sample	836.00
PDL Labour Costs	4 men @ \$378.29/day x 3 days	1,134.87
		<u>\$11,800.40</u>

DDH - 206

11/7/79 - 13/7/79

Caron Diamond Drilling	Invoice #572 (251 ft.)	\$5,135.25
Camp Operations	8 men @ \$30.00/man day x 2 days	480.00
Drilling Charges & Consumables		644.60
Assay Costs	23 samples @ \$22.00/sample	506.00
PDL Labour Costs	4 men @ \$378.29/day x 2 days	756.58
		<u>\$7,522.43</u>

DDH - 207

14/7/79 - 16/7/79

Caron Diamond Drilling	Invoice #572 (402 ft.)	\$8,349.50
Camp Operations	6 men @ \$30.00/man day x 2 days	360.00
Drilling Charges & Consumables		1,084.77
Assay Costs	38 samples @ \$22.00/sample	836.00
PDL Labour Costs	2 men @ \$189.14/day x 2 days	378.29
		<u>\$11,008.56</u>

DDH - 208

14/7/79 - 18/7/79

Caron Diamond Drilling	Invoice #573 & 594 (400 ft.)	\$13,107.15
Camp Operations	6 men @ \$30.00/man day x 4 days	720.00
Drilling Charges & Consumables		1,471.10
Assay Costs	39 samples @ \$22.00/sample	858.00
PDL Labour Costs	2 men @ \$189.14/day x 4 days	756.56
		<u>\$16,912.81</u>

DDH - 209

16/7/79 - 19/7/79

Caron Diamond Drilling	Invoice #593 (401 ft.)	\$8,445.75
Camp Operations	6 men @ \$30.00/man day x 3 days	540.00
Drilling Charges & Consumables		685.70
Assay Costs	38 samples @ \$22.00/sample	836.00
PDL Labour Costs	2 men @ \$189.14/day x 3 days	378.28
		<u>\$10,885.73</u>

DDH - 210

18/7/79 - 22/7/79

Caron Diamond Drilling	Invoice #594 (400 ft.)	\$8,670.00
Camp Operations	6 men @ \$30.00/man day x 4 days	720.00
Assay Costs	40 samples @ \$22.00/sample	880.00
Drilling Charges & Consumables		1,356.50
PDL Labour Costs	2 men @ \$189.14/day x 4 days	756.56
		<u>\$12,383.06</u>

ADANAC DRILLING COSTS CONT'D

DDH - 211 19/7/79 - 21/7/79

Caron Diamond Drilling	Invoice #593 (400 ft.)	\$8,357.00
Camp Operations	6 men @ \$30.00/man day x 2 days	360.00
Drilling Charges & Consumables		632.90
Assay Costs	39 samples @ \$22.00/sample	858.00
PDL Labour Costs	2 men @ \$189.14/day x 2 days	378.28
		<u>\$10,586.18</u>

DDH - 212 21/7/79 - 23/7/79

Caron Diamond Drilling	Invoice #593 (400 ft.)	\$8,124.50
Camp Operations	6 men @ \$30.00/man day x 2 days	360.00
Drilling Charges & Consumables		876.80
Assay Costs	39 samples @ \$22.00/sample	858.00
PDL Labour Costs	2 men @ \$189.14/day x 2 days	378.28
		<u>\$10,597.58</u>

DDH - 213 22/7/79 - 25/7/79

Caron Diamond Drilling	Invoice #594 (395 ft.)	\$8,185.25
Camp Operations	6 men @ \$30.00/man day x 3 days	540.00
Drilling Charges & Consumables		1,086.20
Assay Costs	37 samples @ \$22.00/sample	814.00
PDL Labour Costs	2 men @ \$189.14/day x 2 days	378.28
		<u>\$11,003.73</u>

DDH - 214 23/7/79 - 25/7/79

Caron Diamond Drilling	Invoice #593 (402 ft.)	\$8,278.50
Camp Operation	6 men @ \$30.00/man day x 2 days	360.00
Drilling Charges & Consumables		606.50
Assay Costs	39 samples @ \$22.00/sample	858.00
PDL Labour Costs	2 men @ \$189.14/day x 2 days	378.28
		<u>\$10,481.28</u>

DDH - 215 25/7/79 - 27/7/79

Caron Diamond Drilling	Invoice #594 (400 ft.)	\$8,523.25
Camp Operation	6 men @ \$30.00/man day x 2 days	360.00
Drilling Charges & Consumables		965.90
Assay Costs	38 samples @ \$22.00/sample	836.00
PDL Labour Costs	2 men @ \$189.14/day x 2 days	378.28
		<u>\$11,063.43</u>

DDH - 216 25/7/79 - 27/7/79

Caron Diamond Drilling	Invoice #593 (402 ft.)	\$8,508.00
Camp Operations	6 men @ \$30.00/man day x 2 days	360.00
Drilling Charges & Consumables		1,003.25
Assay Costs	38 samples @ \$22.00/sample	836.00
PDL Labour Costs	2 men @ \$189.14/day x 2 days	378.28
		<u>\$11,085.53</u>

ADANAC DRILLING COSTS CONT'D

<u>DDH 217</u>	27/7/79 - 29/7/79	
Caron Diamond Drilling	Invoice #594 (400 ft.)	\$8,699.25
Camp Operations	6 men @ \$30.00/man day x 2 days	360.00
Drilling Charges & Consumables		1,197.49
Assay Costs	36 samples @ \$22.00/sample	792.00
PDL Labour Costs	2 men @ \$189.14/day x 2 days	378.28
		<u>\$11,427.02</u>

<u>DDH 218</u>	27/7/79 - 30/7/79	
Caron Diamond Drilling	Invoice #593 (400 ft.)	\$8,790.50
Camp Operations	6 men @ \$30.00/man day x 3 days	540.00
Drilling Charges & Consumables		646.10
Assay Costs	39 samples @ \$22.00/sample	858.00
PDL Labour Costs	2 men @ \$189.14/day x 3 days	567.42
		<u>\$11,402.02</u>

<u>DDH 219</u>	29/7/79 - 31/7/79	
Caron Diamond Drilling	Invoice #594 (400 ft.)	\$8,705.25
Camp Operations	6 men @ \$30.00/man day x 2 days	360.00
Drilling Charges & Consumables		871.10
Assay Costs	38 samples @ \$22.00/sample	836.00
PDL Labour Costs	2 men @ \$189.14/day x 2 days	378.28
		<u>\$11,150.63</u>

<u>DDH 220</u>	30/7/79 - 1/8/79	
Caron Diamond Drilling	Invoice #593 (397 ft.)	\$8,096.25
Camp Operations	8 men @ \$30.00/man day x 2 days	480.00
Drilling Charges & Consumables		399.50
Assay Costs	40 samples @ \$22.00/sample	880.00
PDL Labour Costs	2 men @ \$378.29/day x 2 days	756.58
		<u>\$10,612.33</u>

<u>DDH 221</u>	1/8/79 - 3/8/79	
Caron Diamond Drilling	Invoice #606 (400 ft.)	\$8,337.50
Camp Operations	8 men @ \$30.00/man day x 2 days	480.00
Drilling Charges & Consumables		549.50
Assay Costs	38 samples @ \$22.00/sample	836.00
PDL Labour Costs	4 men @ \$378.29/day x 2 days	756.58
		<u>\$10,957.58</u>

<u>DDH 222</u>	3/8/79 - 5/8/79	
Caron Diamond Drilling	Invoice #606 (400 ft.)	\$8,479.00
Camp Operation	8 men @ \$30.00/man day x 2 days	480.00
Drilling Charges & Consumables		576.20
Assay Costs	38 samples @ \$22.00/sample	836.00
PDL Labour Costs	4 men @ \$378.27/day x 2 days	756.58
		<u>\$11,127.78</u>

ADANAC DRILLING COSTS CONT'D

<u>DDH 223</u>	5/8/79 - 8/8/79	
Caron Diamond Drilling	Invoice #606 (400 ft.)	\$8,600.50
Camp Operations	8 men @ \$30.00/man day x 3 days	720.00
Drilling Charges & Consumables		596.00
Assay Costs	35 samples @ \$22.00/sample	770.00
PDL Labour Costs	4 men @ \$378.29/day x 3 days	1,134.87
		<u>\$11,821.37</u>
<u>DDH 224</u>	8/8/79 - 10/8/79	
Caron Diamond Drilling	Invoice #606 (400 ft.)	\$8,138.00
Camp Operation	8 men @ \$30.00/man day x 2 days	480.00
Drilling Charges & Consumables		556.40
Assay Costs	37 samples @ \$22.00/sample	814.00
PDL Labour Costs	4 men @ \$378.29/day x 2 days	756.58
		<u>\$10,744.98</u>
<u>DDH 225</u>	10/8/79 - 12/8/79	
Caron Diamond Drilling	Invoice #606 (400 ft.)	\$8,174.50
Camp Operation	8 men @ \$30.00/man days x 2 days	480.00
Drilling Charges & Consumables		516.80
Assay Costs	37 samples @ \$22.00/sample	814.00
PDL Labour Costs	4 men @ \$378.27/day x 2 days	756.58
		<u>\$10,741.88</u>
<u>DDH 226</u>	12/8/79 - 14/8/79	
Caron Diamond Drilling	Invoice #606 (326 ft.)	\$7,848.00
Camp Operaitons	8 men @ \$30.00/man day x 2 days	480.00
Drilling Charges & Consumables		558.40
Assay Costs	35 samples @ \$22.00/sample	770.00
PDL Labour Costs	4 men @ \$378.27/day x 2 days	756.58
		<u>\$10,412.98</u>
<u>DDH 227</u>	14/8/79 - 20/8/79	
Caron Diamond Drilling	Invoice #606 & 632 (557 ft.)	\$13,265.25
Camp Operations	8 men @ \$30.00/man day x 6 days	1,440.00
Drilling Charges & Consumables		1,007.00
Core/ ^{Barrel} Replacement (lost in hole)		2,172.97
Assay Costs	51 samples @ \$22.00/sample	1,122.00
PDL Labour Costs	4 men @ \$378.29/day x 6 days	2,269.74
		<u>\$21,276.96</u>
<u>DDH - 228</u>	20/8/79 - 23/8/79	
Caron Diamond Drilling	Invoice #632 (536 ft.)	\$11,015.50
Camp Operation	6 men @ \$30.00/man days x 3 days	540.00
Drilling Charges & Consumables		518.30
Assay Costs	49 samples @ \$22.00/sample	1,078.00
PDL Labour Costs	2 men @ \$189.14 (day x 3 days)	567.42
		<u>\$13,719.22</u>

ADANAC DRILLING COSTS CONT'D

<u>DDH 229</u>	20/8/79 - 23/8/79	
Caron Diamond Drilling	Invoice #632 (351 ft.)	\$7,177.75
Camp Operations	6 men @ \$30.00/man day x 3 days	540.00
Assay Costs	31 samples @ \$22.00/sample	682.00
Drilling Charges & Consumables		589.10
PDL Labour Costs	2 men @ \$189.14/day x 3 days	567.42
		<u>\$9,556.27</u>
<u>DDH 230</u>	23/8/79 - 28/8/79	
Caron Diamond Drilling	Invoice #630 (602 ft.)	\$12,626.50
Camp Operations	6 men @ \$30.00/man day x 5	900.00
Drilling Charges & Consumables		948.90
Assay Costs	53 samples @ \$22.00/sample	1,166.00
PDL Labour Costs	2 men @ \$189.14/day x 5 days	945.70
		<u>\$16,587.10</u>
<u>DDH 231</u>	24/8/79 - 27/8/79	
Caron Diamond Drilling	Invoice #634 (477 ft.)	\$9,815.75
Camp Operations	6 men @ \$30.00/man days x 3 days	540.00
Drilling Charges & Consumables		699.50
Assay Costs	47 samples @ \$22.00/sample	1,034.00
PDL Labour	2 men @ \$189.14/day x 3 days	567.42
		<u>\$12,656.67</u>
<u>DDH 232</u>	27/8/79 - 30/8/79	
Caron Diamond Drilling	Invoice #634 (502 ft)	\$10,208.75
Camp Operations	6 men @ \$30.00/man day x 3 days	540.00
Drilling Charges & Consumables		651.00
Assay Costs	49 samples @ \$22.00/sample	1,078.00
PDL Labour Costs	2 men @ \$189.14/day x 3 days	567.42
		<u>\$13,045.17</u>
<u>DDH 233</u>	28/8/79 - 3/9/79	
Caron Diamond Drilling	Invoice #643 (551 ft.)	\$14,013.75
Camp Operation	6 men @ \$30.00/man day x 6 days	1,080.00
Drilling Charges & Consumables		3,226.02
Assay Costs	48 samples @ \$22.00/sample	1,056.00
PDL Labour Costs	2 men @ \$189.14/day x 3 days	1,134.84
		<u>\$20,510.61</u>
<u>DDH 234</u>	31/8/79 - 3/9/79	
Caron Diamond Drilling	Invoice #644 (490 ft.)	\$9,441.00
Camp Operations	6 men @ \$30.00/ man day x 3 days	540.00
Drilling Charges & Consumables		699.50
Assay Costs	42 samples @ \$22.00/sample	924.00
PDL Labour Costs	2 men @ \$189.14/day x 3 days	567.42
		<u>\$12,171.72</u>

ADAMAC DRILLING COSTS CONT'D

<u>DDH 235</u>	4/9/79 - 6/9/79	
Caron Diamond Drilling	Invoice #644 (502 ft.)	\$10,373.00
Camp Operations	6 men @ \$30.00/man day x 2 days	360.00
Drilling Charges & Consumables		628.70
Assay Costs	44 samples @ \$22.00/sample	968.00
PDL Labour Costs	2 men @ \$189.14/day x 2 days	378.28
		<u>\$12,707.98</u>

<u>DDH 236</u>	6/7/79 - 9/9/79	
Caron Diamond Drilling	Invoice #643 (542 ft.)	\$11,497.75
Camp Operations	6 men @ \$30.00/man day x 3 days	540.00
Drilling Charges & Consumables		847.50
Assay Costs	53 samples @ \$22.00/sample	1,166.00
PDL Labour Costs	2 men @ \$189.14/day x 3 days	567.42
		<u>\$14,618.67</u>

<u>DDH 237</u>	6/9/79 - 9/9/79	
Caron Diamond Drilling	Invoice #644 (552 ft.)	\$11,404.00
Camp Operations	6 men @ \$30.00/man day x 3 days	540.00
Drilling Charges & Consumables		289.10
Assay Costs	51 samples @ \$22.00/sample	1,122.00
PDL Labour Costs	2 men @ \$189.14/day x 3 days	567.42
		<u>\$13,922.52</u>

<u>DDH 238</u>	9/9/79 - 12/9/79	
Caron Diamond Drilling	Invoice #644 (527 ft.)	\$11,119.50
Camp Operations	6 men @ \$30.00/man day x 4 days	720.00
Drilling Charges & Consumables		549.00
Demobilization		994.00
Assay Costs	49 samples @ \$22.00/sample	1,078.00
PDL Labour Costs	2 men @ \$189.14/day x 4 days	756.56
		<u>\$15,217.06</u>

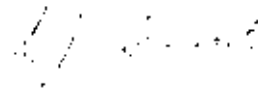
TOTAL DRILLING COSTS		<u>\$478,435.84</u>
----------------------	--	---------------------

APPENDIX B

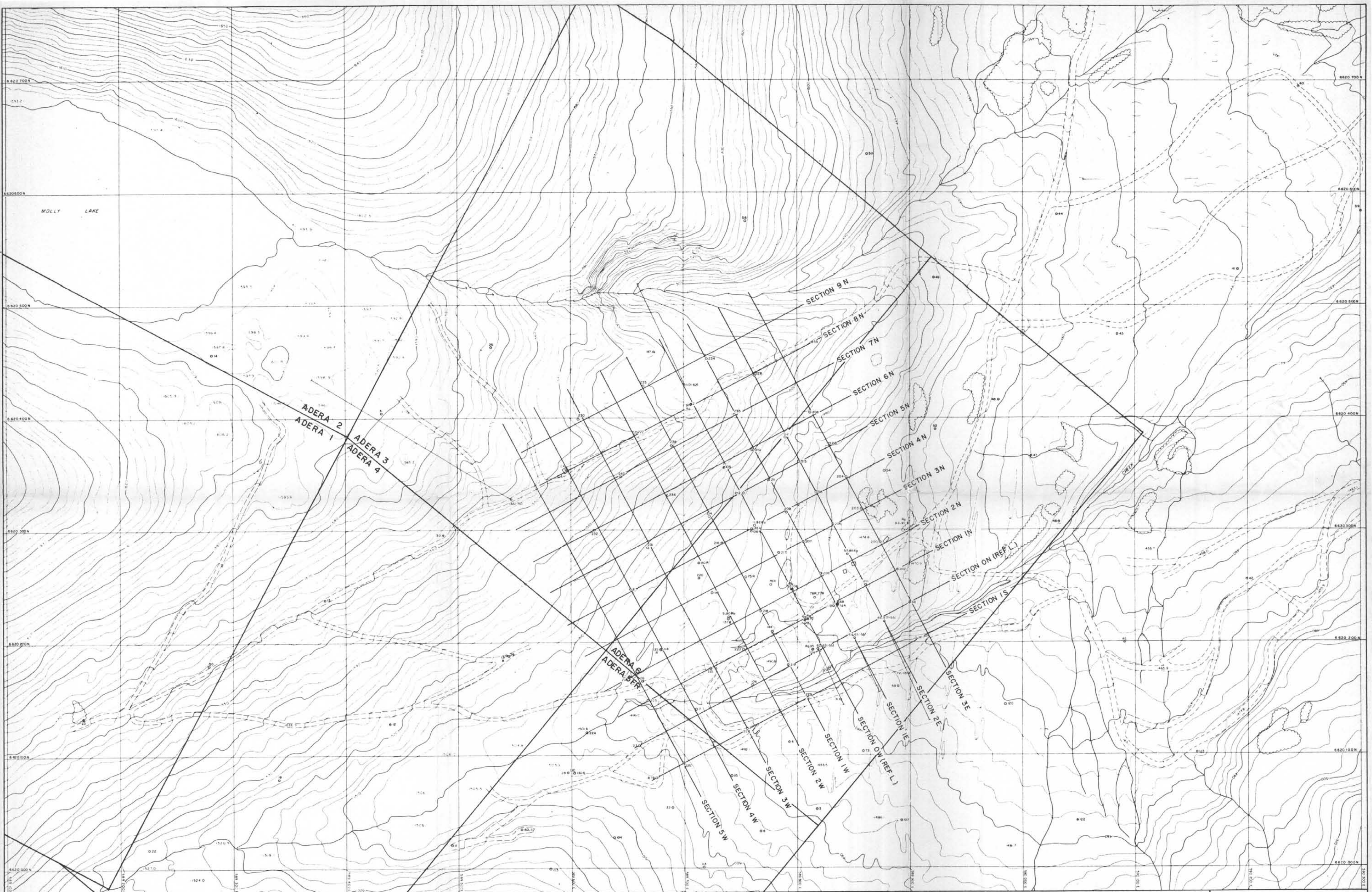
STATEMENT OF QUALIFICATIONS

I, S.J. Tennant of Vancouver, do hereby certify:

1. That I am a Geologist residing at 600 Garrow Drive, Port Moody, British Columbia.
2. That I am a graduate of the University of British Columbia (B.Sc. Geology 1959).
3. That I am employed by Placer Development Limited, 800 - 1030 West Georgia Street, Vancouver, British Columbia.
4. That I have been engaged in mineral exploration for 20 years.
5. That I have personal knowledge of the Adanac deposit and that I have supervised the field work and reviewed the data contained in this report.



S.J. Tennant



MINERAL RESOURCES BRANCH
 ASSESSMENT REPORT
 No. **7727**

PART 183

PLACER DEVELOPMENT LIMITED
 ATLIN MINING DIVISION
 ADANAC MOLYBDENUM PROJECT
 DRILL HOLE PLAN
 0 20 40 60 80 100
 METRES
 CONTOUR INTERVAL 2.5 METRES
 JAN 1980 FILE NO 80-01-V-164-1B-00 RHP (L.L.)