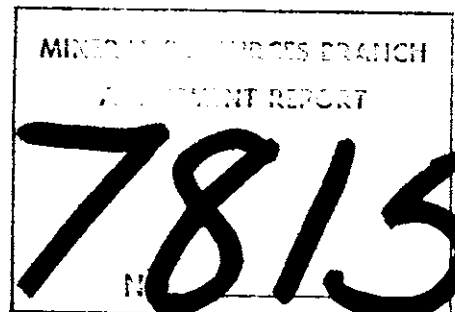


GEOCHEMICAL REPORT
ON THE
GOLDEN, GOLD, SIDE, PEN AND CIL CLAIMS
GRAHAM ISLAND, M.C.I., B.C.
SKEENA M. D.
NTS 103F/8W, 9W
Lat. 53°30'N Long. 132°18'W

FOR
ASHCROFT RESOURCES LTD.
Vancouver, B.C.



BY
A.F. ROBERTS, P. ENG.

December 23, 1979

A. F. ROBERTS, P.ENG.
CONSULTING MINING ENGINEER

TABLE OF CONTENTS

| | <u>Page</u> |
|-----------------------------------|-------------|
| SUMMARY | |
| INTRODUCTION..... | 1 |
| LOCATION, ACCESS, TOPOGRAPHY..... | 2 |
| CLAIM GROUP..... | 3 |
| GENERAL GEOLOGY..... | 3 |
| STRUCTURE..... | 4 |
| GEOCHEMICAL PROGRAM..... | 4 |
| 1] Grid..... | 4 |
| 2] Sampling..... | 4 |
| 3] Assaying..... | 5 |
| ANALYSIS..... | 5 |
| CONCLUSIONS..... | 7 |
| ESTIMATED COST..... | 8 |
| CERTIFICATE..... | 9 |

MAPS

Ref.No.

| | |
|--|------------------|
| 3] Location Map..... | [Frontispiece] |
| 4] Topographic Map, NTS 103F/8W, 9W 1:50,000..... | [Follows page 2] |
| 5] Claim Map, B.C. Department of Mines & Pet. Res. 103F/8W, 1:50,000..... | [Follows page 3] |
| 6] Geology Map: Bull. 54, 1:125,000.... | [Follows page 4] |
| 13] Geochemistry Map, 1 cm = 50 m. | [Back Pocket] |

[Cont'd]

TABLE OF CONTENTS

Page

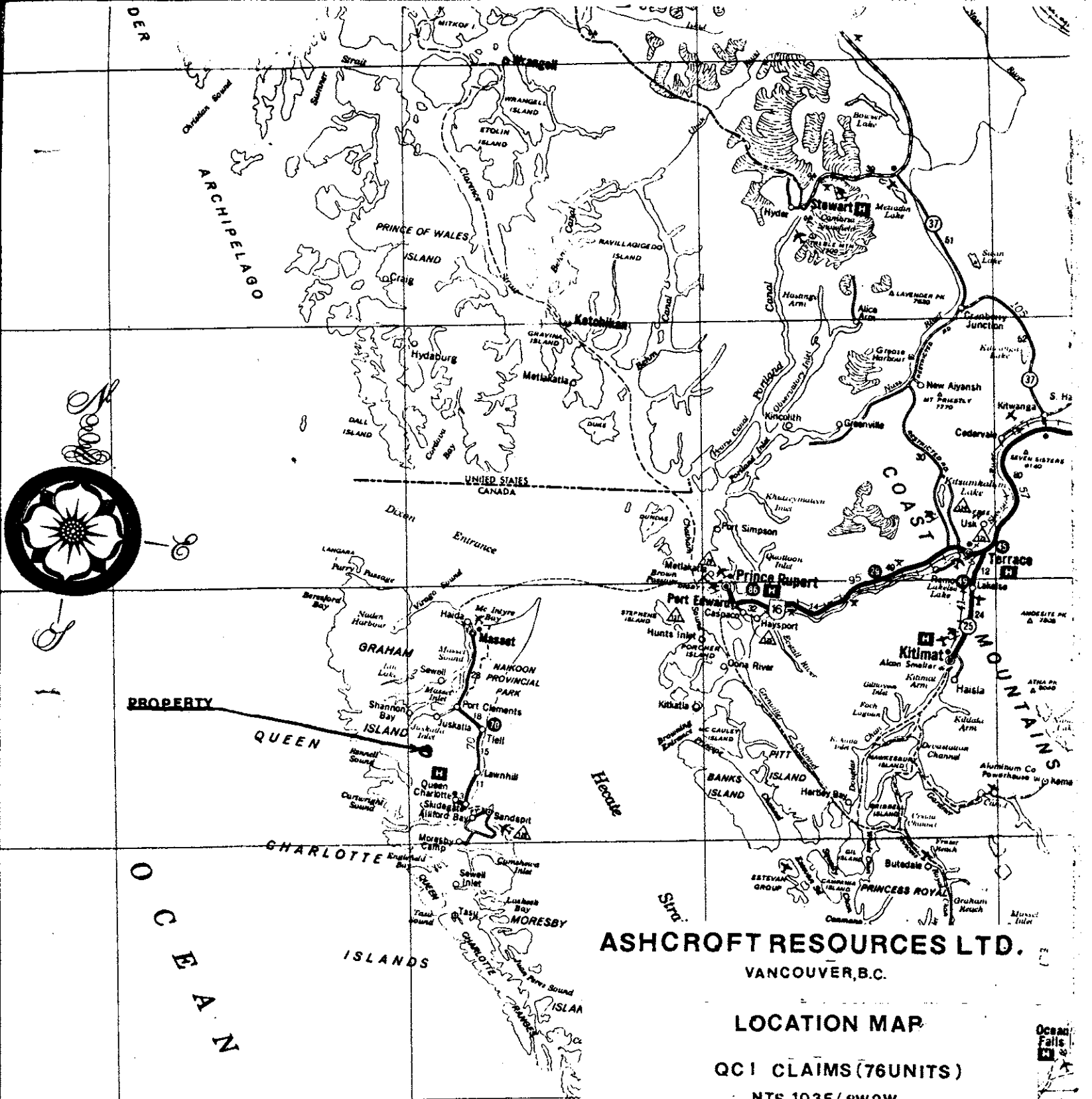
REFERENCES

Ref.No.

- 1] Report on the Gold, Golden, Side, Pen, and CIL Claims, Q.C.I., Skeena M.D. for Ashcroft Resources Ltd.; A.F. Roberts, P.Eng., February 14, 1979
- 2] Drill Logs, Reports for Consolidated Cinola Mines Ltd., A. F. Roberts, P.Eng., 1977, 1978, 1979
- 7] Babe Gold Prospect, Q.C.I., 103F/9E, A. Sutherland-Brown and J.G. Schroeter, 1977
- 8] B.C. Department of Mines & Petroleum Resources; Bulletin 54, Geology of the Queen Charlotte Islands, B.C., A. Sutherland-Brown, 1968
- 12] GSC Bulletin 280, The Geochemistry of Gold and its Deposits, R.W. Boyle, 1979

APPENDICES

- 9] Appendix A: Acme Analytical Labs, Assay Certificates with Analysis Procedures
- 10] Appendix B: Min-EM Lab, Assay Certificate with Analysis Procedures
- 11] Appendix C: Assay Certificate, General Testing Labs
- 14] Appendix D: Statement of Costs



ASHCROFT RESOURCES LTD.
VANCOUVER, B.C.

LOCATION MAP

QC1 CLAIMS (76 UNITS)
NTS 103F/8W9W
SKEENA M.D.

DRAWN BY: *W.D.*
DATE FEB. 14, 1979.
SCALE: 1in=21mi

To Accompany Reports by A.F. Roberts, P. Eng.,
dated February 14, December 23, 1979.

Summer cruises along the Pacific Coast are operated by Royal Viking Lines; Pacific Far

Ocean Falls
Namu
Pish Bay
Dawson
Log

S U M M A R Y

The reconnaissance geochemical sampling has shown five areas where the gold values exceed the background value by two to eight times.

It is recommended that a close interval sampling program [50 metres] be carried out on these areas, and all samples be assayed for gold, arsenic and mercury.

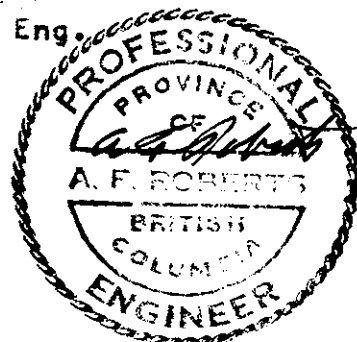
This program is estimated to cost \$53,000.00.

If justified by the results of the geochemical program, a follow-up consisting of trenching and diamond drilling will cost in excess of \$100,000.00.

Respectfully submitted,

A. F. Roberts

A. F. Roberts, P. Eng.



A. F. ROBERTS, P. ENG.
CONSULTING MINING ENGINEER

GEOCHEMICAL REPORT
ON THE
GOLDEN, GOLD, SIDE, PEN AND CIL CLAIMS
GRAHAM ISLAND, Q.C.I., B.C.
SKEENA M. D.
NTS 103F/8W, 9W
Lat. 53°30'N Long. 132°18'W
FOR
ASHCROFT RESOURCES LTD.
Vancouver, B.C.
BY
A.F. ROBERTS, P. ENG.
December 23, 1979

INTRODUCTION

In February 1979, the property was examined by the writer, and five soil samples were taken that were anomalous in gold, arsenic, and mercury. ^{1]}

On the basis of these samples, examination of pyritic rhyolite outcrops, structure, and location with respect to the Consolidated Cinola property, ^{2]} and the writer's experience on that property, it was recommended that the property be subjected to a soil sampling program.

This program was done on a reconnaissance type grid, 50 metres by 200 metres, in the period October 10 to October 23, 1979, and assayed for gold only.

-
- 1] Report on the Gold, Golden, Side, Pen and CIL Claims, Q.C.I., Skeena M.D. for Ashcroft Resources Ltd., A.F. Roberts, P.Eng., February 14, 1979
- 2] Drill Logs, Reports for Consolidated Cinola Mines Ltd., A.F. Roberts, P.Eng., 1977, 1978, 1979



TL 12298

1601

TL 300

A L



F O R E S T

CONGINOLA

F C

PROPERTY

ASHCROFT RESOURCES LTD.
VANCOUVER, B.C.

TOPOGRAPHIC MAP
QCI CLAIMS (76 UNITS)
NTS 103F/8W9W
SKEENA M.D.

DR. ... NBY: WDL
DATE FEB. 14, 1979.
SCALE: 1:50 000

To Accompany Reports by A.F. Roberts, P. Eng.,
dated February 14, December 23, 1979.

The values from the first assays received were only background [5 ppb], much lower than the February assays.

The writer visited the property, re-sampled three of the February locations, taking two samples from each hole and sending them to two different laboratories. The results are given with the following assay certificate.

They were comparable and are accepted without further comments as no reason known to account for the difference from the February assays.

LOCATION, ACCESS, TOPOGRAPHY 3] 4]

The property lies east and north of Marie Lake as shown on the map.

It is well serviced by the active logging roads of MacMillan-Bloedel Logging Co. Ltd., and can be reached from Juskatla in the north, or Queen Charlotte City in the south.

The Gold, Golden and Side claims rise fairly steeply from a low elevation of 200 feet ASL to a maximum of 2,000 feet ASL, and are about 50% covered in virgin timber, the balance being slash, and second growth.

The Pen and CIL claims are flatter, from 200 feet ASL to about 700 feet ASL, and almost all in dense second growth swampy land.

3] Location Map: 1" = 21 miles [Frontispiece]

4] Topographic Map, NTS 103F/8W,9W,
1:50,000 [Follows page 2]

CLAIM GROUP 5]

The Group consists of the following claims:

| <u>Name</u> | <u>Units</u> | <u>Record No.</u> | <u>Expiry Date</u> |
|-------------|--------------|-------------------|--------------------|
| Pen | 20 | 1185 | March, 1980 |
| CIL | 20 | 900 | January 12, 1980 |
| Gold | 4 | 1187 | March, 1980 |
| Golden | 16 | 898 | January 12, 1980 |
| Side | 16 | 902 | January 12, 1980 |

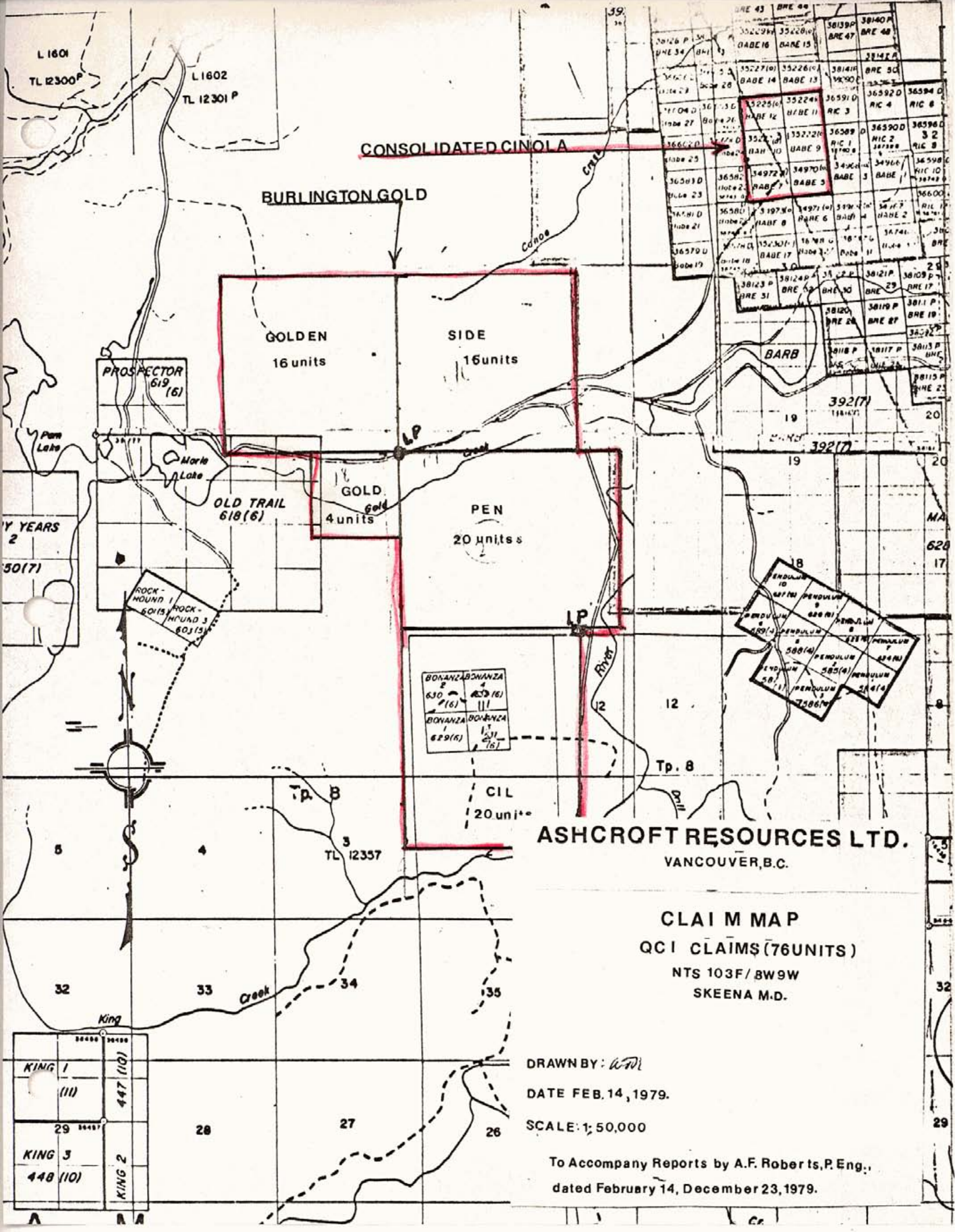
GENERAL GEOLOGY 6] 7]

According to Bulletin 54, the geology of the area is:

- 1] Tertiary Masset Formation [TM] undivided volcanic flows, basaltic to rhyolitic, breccias, tuffs, etc. These are seen in the northwestern areas of the claims at Marie Lake and the hills to the north.
- 2] Cretaceous [KHA] grey and green sandstones, grey, silty shale, buff calcareous siltstone.
- 3] Jurassic [JY] Yakoun Formation, volcanics, andesites, tuff, sandstones, conglomerate, etc. JKu, flaggy black argillites, etc.

Outcrops seen generally bear out the mapping.

-
- 5] Claim Map: B.C. Department of Mines, 103F/8W/9W, 1:50,000 [Follows page 3]
 - 6] Geology Map: Bulletin 54, 1:125,000 with Legend attached [Follows page 4]
 - 7] Babe Gold Prospect, CCI, 103F/9E, A. Sutherland-Brown and J.G. Schroeter, 1977



CONSOLIDATED CINOLA

BURLINGTON GOLD

GOLDEN

16 units

SIDE

16 units

OLD TRAIL

618(6)

GOLD

4 units

PEN

20 units

| | |
|-----------|-----------|
| BONANZA 1 | BONANZA 2 |
| 630(6) | 631(6) |
| BONANZA 3 | BONANZA 4 |
| 629(6) | 630(6) |

| | | | |
|-------------|-------------|-------------|-------------|
| PENDULUM 10 | PENDULUM 11 | PENDULUM 12 | PENDULUM 13 |
| 627(6) | 628(6) | 629(6) | 630(6) |
| PENDULUM 14 | PENDULUM 15 | PENDULUM 16 | PENDULUM 17 |
| 631(6) | 632(6) | 633(6) | 634(6) |

ASHCROFT RESOURCES LTD.
VANCOUVER, B.C.

CLAIM MAP
QC1 CLAIMS (76 UNITS)
NTS 103F/BW9W
SKEENA M.D.

DRAWN BY: *W.P.*
DATE FEB. 14, 1979.
SCALE: 1:50,000

To Accompany Reports by A.F. Roberts, P. Eng.,
dated February 14, December 23, 1979.

| | |
|----------|----------|
| KING 1 | KING 2 |
| (11) | 447 (10) |
| 29 | 28 |
| KING 3 | KING 4 |
| 448 (10) | |

Grey rhyolite, both massive and brecciated, with pyrite in the fractures; fragments of carbonitized wood in the massive were noted. Some of the rhyolite had elongated amygdules of calcite 1 to 2 mm wide, up to 1 cm long. All rocks were well fractured. At the Marie Lake quarry there is both massive and brecciated rhyolite and a dacite dyke, all dipping steeply to the west, and all carrying pyrite. Assays across the quarry gave values of: Gold 0.01 ozs/ton, Silver 0.08 ozs/ton.

In the extreme south there were exposures of argillite, argillite with pods of green sand, and some conglomerate. Minor manganese stain was noted.

STRUCTURE

No structural relationships were observed on the ground.

Sutherland-Brown shows faults and lineaments within the claim group ^{6]}. These could be more extensive than shown.

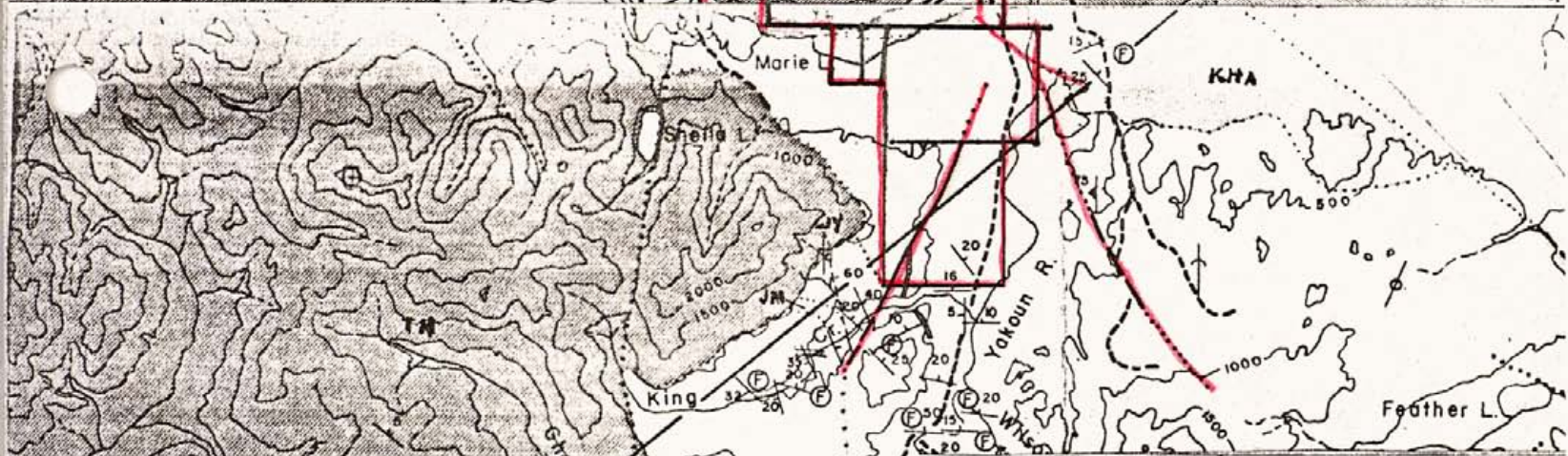
GEOCHEMICAL PROGRAM

1] Grid

The grid was laid out on a 200 metre x 50 metre basis to cover all but the Gold claim.

2] Sampling

Samples were dug up with a pick, and an effort was made to get the "B" Horizon". As much of the area is swampy, many samples of necessity were in the "A" Horizon." All samples were placed in standard brown paper, wet-proof bags, marked with the sample location.



ASHCROFT RESOURCES LTD.
 VANCOUVER, B.C.
GEOLOGY MAP
 QC I CLAIMS (76 UNITS)
 NTS 103F/BW9W
 SKEENA M.D.

DRAWN BY: *W.D.*
 DATE FEB. 14, 1979.
 SCALE: 1:125,000

To Accompany Reports by A.F. Roberts, P. Eng.,
 dated February 23, 1979.

LEGEND

STRATIFIED ROCKS

QUATERNARY

- Q** Recent alluvium, Pleistocene till, marine drift, and outwash sands
Q-S Quaternary overlying Skonun Formation
Q-M Quaternary overlying Masset Formation

TERTIARY OR QUATERNARY

- TQT** TOW HILL SILLS: olivine basalt

TERTIARY

MIO-PLIOCENE

- TS** SKONUN FORMATION: sands, mudstone, sandstone, conglomerate, and lignite

PALEOCENE-EOCENE ?

- TM** MASSET FORMATION: subaerial basalt flows and breccias, rhyolite ash flows, lesser dacite
TM- Undivided Masset Formation
Divided Tortu Facies
TMc - Basalt member
TMb - Rhyolite member
TMa - Mixed member
Hypabyssal Equivalents
TMd - Feldspar porphyry
TMe - Gabbro-diabase

CRETACEOUS

QUEEN CHARLOTTE GROUP (KS, KHc, KHA)

- KS** SKIDEGATE FORMATION: shaly siltstone, feldspathic sandstone, calcareous siltstone

- KHc** HONNA FORMATION: conglomerate with granitic cobbles, arkosic grits, minor shale

ALBIAN-TURONIAN

- KHA** HAIDA FORMATION: green glauconitic and grey sandstone, grey silty shale and siltstone, buff calcareous siltstone

NEOCOMIAN

- KL** LONGARM FORMATION: dark grey calcareous siltstone and fine lithic greywacke, angular fine conglomerate, minor volcanic rocks

VANCOUVER GROUP (TKA, TKU, JKU, JM, JY)

JURASSIC

BAJOCIAN-CALLOVIAN

- JY** YAKOUN FORMATION: porphyritic andesite agglomerate and flows, calcareous scoriaceous lapilli tuff, volcanic sandstone and conglomerate, minor tuffaceous shale, coal

PLIENSCHACHIAN-TOARCIAN

- JM** MAUDE FORMATION: grey blocky argillite and shale, grey green lithic sandstone

JURASSIC AND TRIASSIC

KARNIAN-SINEMURIAN

- TKU** KUNGA FORMATION: massive grey limestone, flaggy black limestone, flaggy black argillite-undivided

- JKU** Flaggy black argillite member, minor limestone

- TKU₂** Flaggy black limestone member, minor argillite

- TKU** Limestone members-undivided

- TKU₁** Massive grey limestone member

TRIASSIC

KARNIAN AND OLDER

3] Assaying

All samples were taken to Acme Analytical Labs, Vancouver for assaying and most of the samples were pulverized. A few check samples were taken to Min-EM Labs, North Vancouver.

Procedures of analysis are enclosed with the Assay Certificates in the Appendices. 8] 9] 10]

ANALYSIS 11] 12]

At the spacing of this grid the survey can only be considered a reconnaissance survey to detect areas that may be worth closer investigation. A mine could be hidden between lines.

A total of 1,213 samples were taken and assayed for gold only.

-
- 8] B.C. Department of Mines & Petroleum Resources: Bulletin 54, Geology of the Queen Charlotte Islands, B.C., A. Sutherland-Brown, 1968
- 9] Appendix A: Acme Analytical Labs, Assay Certificates with Analysis Procedures
- 10] Appendix B: Min-Em Lab, Assay Certificate with Analysis Procedures
- 11] Appendix C: Assay Certificate, General Testing Lab
- 12] GSC Bulletin 280, The Geochemistry of Gold and its Deposits, R.W. Boyle, 1979.
- 13] Geochemistry Map: 1 cm = 50 m. [Back Pocket]

The distribution of the material assayed was:

524 or 43 % organic or "A" Horizon
 55 or 4.5% rock chips taken where soil was
 non-existent
 15 or 1.2% sediments from stream channels
 619 or 51.3% soils, "B" Horizon

Background is established at 0.05 ppm or 5 ppb
 in both "A" and "B" Horizons. The distribution of the
 values above background is:

| | | |
|---------------------------|--------|------------|
| Organic soils "A" Horizon | 10 ppb | 14 samples |
| | 20 ppb | 4 " |
| Rock Chips | 10 ppb | 6 " |
| | 20 ppb | 1 " |
| | 30 ppb | 1 " |
| Sediments | 10 ppb | 3 " |
| Soils "B" Horizon | 10 ppb | 44 " |
| | 20 ppb | 14 " |
| | 30 ppb | 0 " |
| | 40 ppb | 5 " |

Only those assays above 5 ppb are plotted on
 the map. All locations are marked with a dot.

Reference to Bulletin 280, page 464, indicates
 that the normal gold content of soils is less than 5 ppb
 and that values in excess of 10 ppb Au and 7 ppm arsenic
 should receive more attention.

The above is a generalization.

CONCLUSIONS

There are concentrations of values above background in the following areas that are considered worth following up by further soil sampling on a 50 m. by 50 m. grid:

| | | |
|----|-----------------------|-------------|
| 1] | 0 - 13E 5N - 13N | 936 samples |
| 2] | 8E - 13E 0N - 5N | 200 samples |
| 3] | 13E - 22E 0N - 7N | 196 samples |
| 4] | 25E - 33E 25 - 10N | 240 samples |
| 5] | 20E - 33E 75 - 11S | 208 samples |

These are to be assayed for Au, Hg, As.

Also, other areas of the group that were not covered by the last sampling campaign should now be covered with at least a reconnaissance program. A total of about 490 samples.

ESTIMATED COSTPhase I

| | |
|--|---------------------|
| Sample collection | |
| 2,270 samples @ \$10.00 each | \$ 22,700.00 |
| Assaying 2,270 samples @ \$8.25 | 18,727.50 |
| Engineering, supervision, report, etc. | 5,000.00 |
| | <u>46,427.50</u> |
| 15% contingencies | 6,964.15 |
| | <u>\$ 53,391.65</u> |

Say - \$53,000.00

Phase II

If justified by Phase I, will consist of diamond drilling 2,500 m. at a cost of \$75.00 per metre for HQ core, plus roads, permits, etc.

This program will cost in excess of \$100,000.00

Respectfully submitted,

A. F. Roberts

A. F. Roberts, P. Eng.



C E R T I F I C A T E

I, A.F. Roberts of 812 Fairbrook Crescent, Richmond, B.C., do hereby certify that:

- [1] I am a graduate of the University of British Columbia [B.Ap.Sc.] in Mining Engineering, 1951.
- [2] I am registered as a Professional Engineer of the Province of British Columbia, and am a member of The Canadian Institute of Mining and Metallurgy.
- [3] I have practiced my profession since 1951 with Quatsino Copper Gold Mines Ltd., Giant Mascot Mines Ltd., Cochenour Willens Gold Mines Ltd., Mogul Mines Ltd., Kerr Addison Gold Mines Ltd., Atlantic Coast Copper Corporation Ltd., Wasamac Mines Ltd., Brenda Mines Ltd., and T.C. Explorations Ltd. Since January of 1970 I have been an independent Consultant.

Previous to, and during University, I worked as a miner underground, and on several exploration-development projects.

- [4] The accompanying report is based entirely on my personal analysis of the reports and other data referred to in the text, and on a visit to the property on February 3-5, 1979.
- [5] I have no interest, direct or indirect, in the Ashcroft Resources Ltd. property, or adjacent properties, nor have I any interest, direct or indirect, in any companies controlled by Ashcroft Resources Ltd. I have not, nor do I expect to receive any interest in the shares of the Company, in its securities, or in those of any company with which it may become associated.
- [6] I consent to the use of this report, in or in connection with, a prospectus, or a statement of material facts relating to the raising of funds for this project.

DATED at Vancouver, British Columbia, this 23rd day of December, 1979.

A.F. Roberts

A.F. Roberts, P. Eng.



APPENDIX A

ACME ANALYTICAL LABS

ASSAY CERTIFICATES

WITH ANALYSIS PROCEDURES

Geochemical Analysis for Tungsten

A 1.00 gram sample is fused with KCl , KNO_3 , & Na_2CO_3 flux in a test-tube, is leached with 10.0 mls water. An aliquot is used to develop a complex with $SnCl_2$, $KSCN$ and HCl which is extracted by n-tributylphosphate and carbon tetrachloride.

Geochemical Analysis for Fluorine

A .25 gram sample is fused with sodium hydroxide and is leached with water. The solution neutralized, buffered and adjusted to pH 7.8 and diluted to 100 mls. Fluorine is determined by specific ion electrode with specific ion meter, Orion Model 404.

Geochemical Analysis for Tin

A 1.0 gram sample is fused with ammonium iodide in a test-tube. The decomposed iodine is leached with dilute hydrochloric acid; an aliquot is use for colorimetric development with gallein in a buffered solution.

Geochemical Analysis for Platinum

A 10 gram sample is digested with aqua regia to dryness. An aliquot of HCl leached solution is reduced by stannous chloride and extracted into MIBK. The extracted Pt is determined by AA with background correction.

Geochemical Analysis of As

Digestion

A .50 gram digested hot with 5 mls of 50% HCl , and then diluted to 10 mls.

Determination

The As is evolved from solution of KI , $SnCl_2$ by Zn metal into AgDDC solution which is read colorimetrically.

Geochemical Analysis of Hg

Digestion

A .50 gram sample is digested with nitric and perchloric acid and diluted with 20% HCl.

Determination

Hg is determined by cold vapour AA using F & J scientific Hg assembly. An aliquot is added to stannous chloride-hydrochloric acid solution. The reduced Hg is carried by bubbling air through the solution and passed into the Hg cell determined by AA.

Oxalic Acid Leach of Rock, Soil & Silt Samples

A .50 gram sample is digested hot with 10 mls 5% oxalic acid solution. The oxalic acid will dissolve Fe and Mn from their oxidized M - 1 fraction (but not from magnetite & ilmenite) limonites and clays. The following metals are analysed by atomic absorption: Cu, Zn, Pb, Ni, Mo, Fe, & Mn.

Cold HCl Acid Extraction

A .50 gram sample is leached at room temperature for 2 hours with occasional shaking with 10 mls 5% HCl solution. This will dissolve Cu from the organic and surface of clay fractions.

EDTA Extraction

A .50 gram sample is leached at room temperature for 4 hours with 10 mls of 2.5% EDTA solution.

CORE & ROCK ASSAYS SOIL, ROCK & WATER GEOCHEM ANALYSIS
ACME ANALYTICAL LABORATORIES LTD.

MAIN LAB - 6455 LAUREL ST.
BURNABY, B.C. V5B 3B4
(604) 299-5242

ROSS RIVER - YUKON - (403) 969-2217

DEAN TOYE, B.Sc.
CHIEF CHEMIST, CERTIFIED B.C. ASSAYER
HOME PHONE 438-7672

Geochemical Analysis of Mo, Cu, Pb, Zn, Ag*, Ni, Co,
Mn, Bi*, V, Fe, Cd*, & Sb*

Sample preparation

Soil samples are dried at 75°C and sieved to -80 mesh.

Rock samples are ground to -100 mesh.

Digestion

A .50 gram sample is digested with dilute aqua regia in boiling water bath and diluted to 10 mls with demineralized water.

Determination

All the above elements are determined by Atomic Absorption from the solution.

* With background correction.

Geochemical Analysis of Au

Digestion and extraction

A 10 gram sample which has been ignited over night at 600°C is digested hot with dilute aqua regia, and the clear solution is extracted with Methyl Isobuthyl Ketone.

Determination

Au is determined by AA from the MIBK extractant with background correction.

Geochemical Analysis of Ba

A .100 gram sample is digested hot with NaOH and EDTA solution. The solution is analysis for Ba by AA.

Geochemical Uranium Analysis

Digestion

A .50 gram sample is digested hot with nitric and perchloric acid and diluted to 10 mls.

Fusion

An aliquot is solvent extracted with salting agent and aliquot of is fused with NaF, K₂CO₃, & Na₂CO₃ flux in platinum dish.

Determination

The fluorescence of the pellet is read in the Turner fluorometer.



ACME ANALYTICAL LABORATORIES LTD.

To: Univex-Mining-Corp. Ltd.,
#28 - 425 Howe Street,
Vancouver, B. C.

Assaying & Trace Analysis

852 E. Hastings St., Vancouver, B. C. V6A 1R6

phone: 253 - 3158

File No. 0709

Type of Samples Soils

GEOCHEMICAL ASSAY CERTIFICATE

Disposition _____

| SAMPLE No. | Au | Hg | As | | | | | | | |
|------------|------|--------------|----|---|----|--|--|--|--|--|
| A - 1 | .005 | .080 | 6 | SW Corner Post Marie Lake Drugg | 1 | | | | | |
| 2 | .005 | .165 | 12 | 50m N of Post Brown Soil | 2 | | | | | |
| 3 | .005 | .150 | 1 | 100m " " Black Soil | 3 | | | | | |
| 4 | .005 | <u>1.300</u> | 8 | Post Golden SW. Red soil. N side of Rd. | 4 | | | | | |
| 5 | .010 | .185 | 1 | 7.5 E N side of Rd. | 5 | | | | | |
| 6 | .005 | <u>.590</u> | 11 | Golden SW N of Post. Grey Soil | 6 | | | | | |
| 7 | .005 | <u>.200</u> | 4 | New Golden Post SW. Red Soil | 7 | | | | | |
| A - 8 | .005 | <u>.610</u> | 9 | N. CR Golden etc. Red soil. | 8 | | | | | |
| | | | | | 9 | | | | | |
| | | | | | 10 | | | | | |
| | | | | | 11 | | | | | |
| | | | | | 12 | | | | | |
| | | | | | 13 | | | | | |
| | | | | | 14 | | | | | |
| | | | | | 15 | | | | | |
| | | | | | 16 | | | | | |
| | | | | | 17 | | | | | |
| | | | | | 18 | | | | | |
| | | | | | 19 | | | | | |
| | | | | | 20 | | | | | |
| | | | | | 21 | | | | | |
| | | | | | 22 | | | | | |
| | | | | | 23 | | | | | |
| | | | | | 24 | | | | | |
| | | | | | 25 | | | | | |
| | | | | | 26 | | | | | |
| | | | | | 27 | | | | | |
| | | | | | 28 | | | | | |
| | | | | | 29 | | | | | |
| | | | | | 30 | | | | | |
| | | | | | 31 | | | | | |
| | | | | | 32 | | | | | |
| | | | | | 33 | | | | | |
| | | | | | 34 | | | | | |
| | | | | | 35 | | | | | |
| | | | | | 36 | | | | | |
| | | | | | 37 | | | | | |
| | | | | | 38 | | | | | |
| | | | | | 39 | | | | | |
| | | | | | 40 | | | | | |

All reports are the confidential property of clients
All results are in PPM.

DIGESTION:.....

DETERMINATION:.....

DATE SAMPLES RECEIVED Dec. 8, 1979

DATE REPORTS MAILED Dec. 17, 1979

ASSAYER Dean Toyé

DEAN TOYÉ, B.Sc.
CHIEF CHEMIST
CERTIFIED B.C. ASSAYER



To: ASH Croft Res.,

ACME ANALYTICAL LABORATORIES LTD.

Assaying & Trace Analysis

852 E. Hastings St., Vancouver, B. C. V6A 1R6

Telephone: 253 - 3158

File No. 0531

Type of Samples

Disposition

ASSAY CERTIFICATE

| No. | Sample | Ag oz/ton | Au oz/ton | | | | | No. |
|-----|--------|--------------|--------------|---|--|--|--|-----|
| 1 | 002271 | .01 | .001 | | | | | 1 |
| 2 | 002272 | .01 | .002 | } Select pyrite. Grab samples Marie Lake quarry | | | | 2 |
| 3 | 002273 | .01 | .002 | | | | | 3 |
| 4 | 002274 | .02 | .005 | | | | | 4 |
| 5 | 002275 | .03 | .004 | | | | | 5 |
| 6 | | | | | | | | 6 |
| 7 | | | | | | | | 7 |
| 8 | | | | | | | | 8 |
| 9 | | | | | | | | 9 |
| 10 | | | | | | | | 10 |
| 11 | | | | | | | | 11 |
| 12 | | | | | | | | 12 |
| 13 | | | | | | | | 13 |
| 14 | | | | | | | | 14 |
| 15 | | | | | | | | 15 |
| 16 | | | | | | | | 16 |
| 17 | | | | | | | | 17 |
| 18 | | | | | | | | 18 |
| 19 | | | | | | | | 19 |
| 20 | | | | | | | | 20 |

All reports are the confidential property of clients.

DATE SAMPLES RECEIVED Sept. 25, 1979

DATE REPORTS MAILED Sept. 28, 1979

ASSAYER Dean Toye

DEAN TOYE, B.Sc.
CHIEF CHEMIST
CERTIFIED B.C. ASSAYER



To: ASH Croft Res.,
8120, Fairbroon Cres.,
Richmond, B.C.
V7C 1E1

ACME ANALYTICAL LABORATORIES LTD.

Assaying & Trace Analysis

852 E. Hastings St., Vancouver, B.C. V6A 1R6

Telephone: 253 - 3158

File No. 0531

Type of Samples Rock

Disposition _____

ASSAY CERTIFICATE

| No. | Sample | Ag oz/ton | Au oz/ton | | | | | No. |
|-----|--------|--------------|--------------|---|--|--|--|-----|
| 1 | 002251 | .01 | .001 | <i>Chip Samples 2 m lengths across Marie Lake Quarry.</i> | | | | 1 |
| 2 | 002252 | .02 | .001 | | | | | 2 |
| 3 | 002253 | .01 | .001 | | | | | 3 |
| 4 | 002254 | .01 | .001 | | | | | 4 |
| 5 | 002255 | .01 | .001 | | | | | 5 |
| 6 | 002256 | .01 | .001 | | | | | 6 |
| 7 | 002257 | .01 | .001 | | | | | 7 |
| 8 | 002258 | .02 | .001 | | | | | 8 |
| 9 | 002259 | .01 | .002 | | | | | 9 |
| 10 | 002260 | .01 | .002 | | | | | 10 |
| 11 | 002261 | .01 | .001 | | | | | 11 |
| 12 | 002262 | .01 | .001 | | | | | 12 |
| 13 | 002263 | .01 | .001 | | | | | 13 |
| 14 | 002264 | .01 | .001 | | | | | 14 |
| 15 | 002265 | .01 | .001 | | | | | 15 |
| 16 | 002266 | .01 | .001 | | | | | 16 |
| 17 | 002267 | .01 | .001 | | | | | 17 |
| 18 | 002268 | .01 | .001 | | | | | 18 |
| 19 | 002269 | .01 | .001 | | | | | 19 |
| 20 | 002270 | .01 | .001 | | | | | 20 |

All reports are the confidential property of clients.

DATE SAMPLES RECEIVED Sept. 25, 1979

DATE REPORTS MAILED Sept. 28, 1979

ASSAYER

Dean Toye
DEAN TOYE, B.Sc.
CHIEF CHEMIST
CERTIFIED B.C. ASSAYER



To: Ash Croft Resources Ltd.,

ACME ANALYTICAL LABORATORIES LTD.

Assaying & Trace Analysis

852 E. Hastings St., Vancouver, B. C. V6A 1R6

phone:253 - 3158

File No. 0671

Type of Samples Soils

Disposition

GEOCHEMICAL ASSAY CERTIFICATE

All sample on this page pulverized

| SAMPLE No. | | Au | | | | | | | | | | | | | | | | |
|------------|-----|------|------|------|-------|--|--|--|--|--|--|--|--|--|--|--|--|----|
| 28 | 40S | 25 | E | .005 | | | | | | | | | | | | | | 1 |
| | | 25.5 | org. | .005 | | | | | | | | | | | | | | 2 |
| | | 26 | org. | .005 | | | | | | | | | | | | | | 3 |
| | | 26.5 | | .005 | | | | | | | | | | | | | | 4 |
| | | 27 | | .005 | | | | | | | | | | | | | | 5 |
| | | 27.5 | | .005 | | | | | | | | | | | | | | 6 |
| | | 28 | | .005 | | | | | | | | | | | | | | 7 |
| | | 28.5 | | .005 | | | | | | | | | | | | | | 8 |
| | | 29 | | .005 | | | | | | | | | | | | | | 9 |
| | | 29.5 | | .005 | | | | | | | | | | | | | | 10 |
| | | 30 | org. | .005 | | | | | | | | | | | | | | 11 |
| | | 30.5 | org. | .005 | (a+b) | | | | | | | | | | | | | 12 |
| | | 31 | org. | .005 | | | | | | | | | | | | | | 13 |
| | | 31.5 | org. | .005 | | | | | | | | | | | | | | 14 |
| | | 32 | org. | .005 | | | | | | | | | | | | | | 15 |
| | | 32.5 | org. | .005 | | | | | | | | | | | | | | 16 |
| | | 33 | org. | .005 | | | | | | | | | | | | | | 17 |
| | | 33.5 | | .005 | | | | | | | | | | | | | | 18 |
| | | 34 | org. | .005 | | | | | | | | | | | | | | 19 |
| | | 34.5 | org. | .005 | | | | | | | | | | | | | | 20 |
| | | 35 | org. | .005 | | | | | | | | | | | | | | 21 |
| | | 35.5 | org. | .005 | | | | | | | | | | | | | | 22 |
| | | 36 | org. | .005 | | | | | | | | | | | | | | 23 |
| | | 36.5 | org. | .005 | | | | | | | | | | | | | | 24 |
| | | 37 | org. | .005 | | | | | | | | | | | | | | 25 |
| | | 37.5 | | N.S. | | | | | | | | | | | | | | 26 |
| | | 38 | org. | .005 | | | | | | | | | | | | | | 27 |
| | | 38.5 | org. | .005 | | | | | | | | | | | | | | 28 |
| | | 39 | org. | .005 | | | | | | | | | | | | | | 29 |
| | | 39.5 | org. | .005 | | | | | | | | | | | | | | 30 |
| | 40S | 40 | E | .005 | | | | | | | | | | | | | | 31 |
| | | | | | | | | | | | | | | | | | | 32 |
| | | | | | | | | | | | | | | | | | | 33 |
| | | | | | | | | | | | | | | | | | | 34 |
| | | | | | | | | | | | | | | | | | | 35 |
| | | | | | | | | | | | | | | | | | | 36 |
| | | | | | | | | | | | | | | | | | | 37 |
| | | | | | | | | | | | | | | | | | | 38 |
| | | | | | | | | | | | | | | | | | | 39 |
| | | | | | | | | | | | | | | | | | | 40 |

All reports are the confidential property of clients
All results are in PPM.

DIGESTION:.....

DETERMINATION:.....

DATE SAMPLES RECEIVED Nov. 14, 1979

DATE REPORTS MAILED Nov. 28, 1979

ASSAYER *Dean Toye*

DEAN TOYE, B.Sc.
CHIEF CHEMIST
CERTIFIED B.C. ASSAYER



To: Ash Croft Resources Ltd.

ACME ANALYTICAL LABORATORIES LTD.

Assaying & Trace Analysis

852 E. Hastings St., Vancouver, B. C. V6A 1R6

phone: 253 - 3158

File No. 0671

Type of Samples Soils

Disposition

GEOCHEMICAL ASSAY CERTIFICATE

All samples on this page pulverized

27

| SAMPLE No. | | Au | | | | | | | | | | | |
|------------|------|------|-------|--|--|--|--|--|--|--|--|--|----|
| 38S 28.0E | org. | .005 | | | | | | | | | | | 1 |
| 28.5 | org. | .005 | | | | | | | | | | | 2 |
| 29.0 | org. | .005 | | | | | | | | | | | 3 |
| 29.5 | | .005 | | | | | | | | | | | 4 |
| 30.0 | org. | .005 | | | | | | | | | | | 5 |
| 30.5 | org. | .005 | | | | | | | | | | | 6 |
| 31.0 | org. | .005 | | | | | | | | | | | 7 |
| 31.5 | org. | .005 | | | | | | | | | | | 8 |
| 32.0 | | .005 | | | | | | | | | | | 9 |
| 32.5 | org. | .005 | | | | | | | | | | | 10 |
| 33.0 | org. | .005 | | | | | | | | | | | 11 |
| 33.5 | org. | .005 | | | | | | | | | | | 12 |
| 34.0 | org. | .005 | | | | | | | | | | | 13 |
| 34.5 | org. | .005 | | | | | | | | | | | 14 |
| 35.0 | org. | .005 | | | | | | | | | | | 15 |
| 35.5 | org. | .005 | | | | | | | | | | | 16 |
| 36.0 | org. | .005 | | | | | | | | | | | 17 |
| 36.5 | org. | .005 | (A+B) | | | | | | | | | | 18 |
| 37.0 | org. | .005 | | | | | | | | | | | 19 |
| 37.5 | org. | .005 | | | | | | | | | | | 20 |
| 38.0 | org. | .005 | | | | | | | | | | | 21 |
| 38.5 | | .005 | | | | | | | | | | | 22 |
| 39.0 | org. | .005 | | | | | | | | | | | 23 |
| 39.5 | org. | .005 | | | | | | | | | | | 24 |
| 38S 40.0E | org. | .005 | | | | | | | | | | | 25 |
| | | | | | | | | | | | | | 26 |
| | | | | | | | | | | | | | 27 |
| | | | | | | | | | | | | | 28 |
| | | | | | | | | | | | | | 29 |
| | | | | | | | | | | | | | 30 |
| | | | | | | | | | | | | | 31 |
| | | | | | | | | | | | | | 32 |
| | | | | | | | | | | | | | 33 |
| | | | | | | | | | | | | | 34 |
| | | | | | | | | | | | | | 35 |
| | | | | | | | | | | | | | 36 |
| | | | | | | | | | | | | | 37 |
| | | | | | | | | | | | | | 38 |
| | | | | | | | | | | | | | 39 |
| | | | | | | | | | | | | | 40 |

All reports are the confidential property of clients
All results are in PPM.

DIGESTION:.....

DETERMINATION:.....

DATE SAMPLES RECEIVED Nov. 14, 1979

DATE REPORTS MAILED Nov. 28, 1979

ASSAYER *Dean Toy*

DEAN TOYE, B.Sc.
CHIEF CHEMIST
CERTIFIED B.C. ASSAYER



To: Ash Croft Resources Ltd.

ACME ANALYTICAL LABORATORIES LTD.

Assaying & Trace Analysis

852 E. Hastings St., Vancouver, B. C. V6A 1R6

phone:253 - 3158

File No. 0671

Type of Samples Soils

Disposition

GEOCHEMICAL ASSAY CERTIFICATE

All sample on this page pulverized

26

| SAMPLE No. | | Au | | | | | | | | | | | |
|------------|------|-------------|--|--|--|--|--|--|--|--|--|--|----|
| 34S 39 E | org. | .005 | | | | | | | | | | | 1 |
| 39.5 | org. | .005 | | | | | | | | | | | 2 |
| 34S 40 E | | .005 | | | | | | | | | | | 3 |
| | | | | | | | | | | | | | 4 |
| 36S 25 E | | .005 | | | | | | | | | | | 5 |
| 25.5 | | .005 | | | | | | | | | | | 6 |
| 26 | | .005 | | | | | | | | | | | 7 |
| 26.5 | | .005 | | | | | | | | | | | 8 |
| 27 | | <u>.010</u> | | | | | | | | | | | 9 |
| 27.5 | | .005 | | | | | | | | | | | 10 |
| 28 | | .005 | | | | | | | | | | | 11 |
| 28.5 | | .005 | | | | | | | | | | | 12 |
| 29 | | <u>.010</u> | | | | | | | | | | | 13 |
| 29.5 | | .005 | | | | | | | | | | | 14 |
| 30 | | .005 | | | | | | | | | | | 15 |
| 30.5 | org. | .005 | | | | | | | | | | | 16 |
| 31 | org. | .005 | | | | | | | | | | | 17 |
| 31.5 | org. | .005 | | | | | | | | | | | 18 |
| 32 | org. | .005 | | | | | | | | | | | 19 |
| 32.5 | org. | .005 | | | | | | | | | | | 20 |
| 33 | org. | <u>.010</u> | | | | | | | | | | | 21 |
| 33.5 | org. | .005 | | | | | | | | | | | 22 |
| 34 | org. | .005 | | | | | | | | | | | 23 |
| 34.5 | org. | .005 | | | | | | | | | | | 24 |
| 35 | | <u>.010</u> | | | | | | | | | | | 25 |
| 35.5 | | .005 | | | | | | | | | | | 26 |
| 36 | org. | .005 | | | | | | | | | | | 27 |
| 36.5 | | .005 | | | | | | | | | | | 28 |
| 37 | org. | .005 | | | | | | | | | | | 29 |
| 37.5 | | .005 | | | | | | | | | | | 30 |
| 39.5 | org. | .005 | | | | | | | | | | | 31 |
| 36S 40 E | | <u>.020</u> | | | | | | | | | | | 32 |
| | | | | | | | | | | | | | 33 |
| 38S 25 E | org. | .005 | | | | | | | | | | | 34 |
| 25.5 | org. | .005 | | | | | | | | | | | 35 |
| 26 | org. | .005 | | | | | | | | | | | 36 |
| 26.5 | org. | .005 | | | | | | | | | | | 37 |
| 27 | org. | .005 | | | | | | | | | | | 38 |
| 38S 27.5 E | org. | .005 | | | | | | | | | | | 39 |
| | | | | | | | | | | | | | 40 |

All reports are the confidential property of clients
All results are in PPM.

DIGESTION:.....

DETERMINATION:.....

DATE SAMPLES RECEIVED Nov. 14, 1979

DATE REPORTS MAILED Nov. 28, 1979

ASSAYER

DEAN TOYE, B.Sc.
CHIEF CHEMIST
CERTIFIED B.C. ASSAYER



To: Ash Croft Resources Ltd.

ACME ANALYTICAL LABORATORIES LTD.

Assaying & Trace Analysis

852 E. Hastings St., Vancouver, B. C. V6A 1R6

phone:253 - 3158

File No. 0671

Type of Samples Soils

Disposition

GEOCHEMICAL ASSAY CERTIFICATE

All samples on this page pulverized

25

| SAMPLE No. | Au | | | | | | | | | | | | | |
|------------|-----------|--|--|--|--|--|--|--|--|--|--|--|--|----|
| 32S 35.5E | .005 | | | | | | | | | | | | | 1 |
| 36 | .005 | | | | | | | | | | | | | 2 |
| 36.5 | .005 | | | | | | | | | | | | | 3 |
| 37 | .005 | | | | | | | | | | | | | 4 |
| 37.5 | .005 | | | | | | | | | | | | | 5 |
| 38 | .005 | | | | | | | | | | | | | 6 |
| 38.5 | .005 | | | | | | | | | | | | | 7 |
| 39 | .005 | | | | | | | | | | | | | 8 |
| 39.5 | .005 | | | | | | | | | | | | | 9 |
| 32S 40 E | .005 | | | | | | | | | | | | | 10 |
| | | | | | | | | | | | | | | 11 |
| 34S 25 E | .005 | | | | | | | | | | | | | 12 |
| 25.5 | .005 | | | | | | | | | | | | | 13 |
| 26 | .005 | | | | | | | | | | | | | 14 |
| 26.5 | .005 | | | | | | | | | | | | | 15 |
| 27 | .005 | | | | | | | | | | | | | 16 |
| 27.5 | .005 | | | | | | | | | | | | | 17 |
| 28 | .005 | | | | | | | | | | | | | 18 |
| 28.5 | .005 | | | | | | | | | | | | | 19 |
| 29 | .005 | | | | | | | | | | | | | 20 |
| 29.5 | .005 | | | | | | | | | | | | | 21 |
| 30 | .005 | | | | | | | | | | | | | 22 |
| 30.5 | .005 | | | | | | | | | | | | | 23 |
| 31 | org. .005 | | | | | | | | | | | | | 24 |
| 31.5 | org. .005 | | | | | | | | | | | | | 25 |
| 32 | .005 | | | | | | | | | | | | | 26 |
| 32.5 | .005 | | | | | | | | | | | | | 27 |
| 33 | org. .005 | | | | | | | | | | | | | 28 |
| 33.5 | org. .005 | | | | | | | | | | | | | 29 |
| 34 | org. .005 | | | | | | | | | | | | | 30 |
| 34.5 | org. .005 | | | | | | | | | | | | | 31 |
| 35 | .005 | | | | | | | | | | | | | 32 |
| 35.5 | .005 | | | | | | | | | | | | | 33 |
| 36 | .005 | | | | | | | | | | | | | 34 |
| 36.5 | .005 | | | | | | | | | | | | | 35 |
| 37 | .005 | | | | | | | | | | | | | 36 |
| 37.5 | .005 | | | | | | | | | | | | | 37 |
| 38 | .005 | | | | | | | | | | | | | 38 |
| 34S 38.5E | .005 | | | | | | | | | | | | | 39 |
| | | | | | | | | | | | | | | 40 |

All reports are the confidential property of clients
All results are in PPM.

DIGESTION:.....

DETERMINATION:.....

DATE SAMPLES RECEIVED Nov. 14, 1979

DATE REPORTS MAILED Nov. 28, 1979

ASSAYER *D. Toye*

DEAN TOYE, B.Sc.
CHIEF CHEMIST
CERTIFIED B.C. ASSAYER



To: Ash Croft Resources Ltd.,

ACME ANALYTICAL LABORATORIES LTD.

Assaying & Trace Analysis

852 E. Hastings St., Vancouver, B. C. V6A 1R6

phone:253 - 3158

File No. 0671

Type of Samples Soils

Disposition

GEOCHEMICAL ASSAY CERTIFICATE

All soil and org. samples on this page pulverized

| SAMPLE No. | Au | | | | | | | | | | |
|------------|-----------|--|--|--|--|--|--|--|--|--|----|
| 30S 32 E | org. .005 | | | | | | | | | | 1 |
| 32.5 | .040 | | | | | | | | | | 2 |
| 33 | org. .005 | | | | | | | | | | 3 |
| 33.5 | org. .005 | | | | | | | | | | 4 |
| 34 | org. .005 | | | | | | | | | | 5 |
| 34.5 | org. .005 | | | | | | | | | | 6 |
| 35 | org. .005 | | | | | | | | | | 7 |
| 35.5 | org. .005 | | | | | | | | | | 8 |
| 36 | .005 | | | | | | | | | | 9 |
| 36.5 | R.C. .005 | | | | | | | | | | 10 |
| 37 | org. .005 | | | | | | | | | | 11 |
| 37.5 | org. .005 | | | | | | | | | | 12 |
| 38 | org. .005 | | | | | | | | | | 13 |
| 38.5 | .005 | | | | | | | | | | 14 |
| 39 | org. .005 | | | | | | | | | | 15 |
| 39.5 | .005 | | | | | | | | | | 16 |
| 30S 40 E | .005 | | | | | | | | | | 17 |
| | | | | | | | | | | | 18 |
| 32S 25 E | org. .005 | | | | | | | | | | 19 |
| 25.5 | org. .005 | | | | | | | | | | 20 |
| 26 | org. .005 | | | | | | | | | | 21 |
| 26.5 | org. .005 | | | | | | | | | | 22 |
| 27 | .005 | | | | | | | | | | 23 |
| 27.5 | org. .005 | | | | | | | | | | 24 |
| 28 | .005 | | | | | | | | | | 25 |
| 28.5 | R.C. .005 | | | | | | | | | | 26 |
| 29 | .005 | | | | | | | | | | 27 |
| 29.5 | .005 | | | | | | | | | | 28 |
| 30 | .005 | | | | | | | | | | 29 |
| 30.5 | .005 | | | | | | | | | | 30 |
| 31 | org. .005 | | | | | | | | | | 31 |
| 31.5 | .005 | | | | | | | | | | 32 |
| 32 | .005 | | | | | | | | | | 33 |
| 32.5 | .005 | | | | | | | | | | 34 |
| 33 | org. .005 | | | | | | | | | | 35 |
| 33.5 | .005 | | | | | | | | | | 36 |
| 34 | .005 | | | | | | | | | | 37 |
| 34.5 | .005 | | | | | | | | | | 38 |
| 32S 35 E | .005 | | | | | | | | | | 39 |
| | | | | | | | | | | | 40 |

All reports are the confidential property of clients
All results are in PPM.

DIGESTION:.....

DETERMINATION:.....

DATE SAMPLES RECEIVED Nov. 14, 1979

DATE REPORTS MAILED Nov. 28, 1979

ASSAYER *Dean Toye*

DEAN TOYE, B.Sc.
CHIEF CHEMIST
CERTIFIED B.C. ASSAYER



To: ASH Croft Resources Ltd.

ACME ANALYTICAL LABORATORIES LTD.

Assaying & Trace Analysis

852 E. Hastings St., Vancouver, B. C. V6A 1R6

phone:253 - 3158

File No. 0671

Type of Samples Soils

Disposition

GEOCHEMICAL ASSAY CERTIFICATE

All soil and org. samples on this page pulverized

23

| SAMPLE No. | | Au | | | | | | | | | | |
|------------|-------|------|------|--|--|--|--|--|--|--|--|----|
| 28S | 28.5E | | .005 | | | | | | | | | 1 |
| | 29.0 | | .005 | | | | | | | | | 2 |
| | 29.5 | | .005 | | | | | | | | | 3 |
| | 30.0 | | .005 | | | | | | | | | 4 |
| | 30.5 | | .005 | | | | | | | | | 5 |
| | 31.0 | | .005 | | | | | | | | | 6 |
| | 31.5 | | N.S. | | | | | | | | | 7 |
| | 32.0 | org. | .005 | | | | | | | | | 8 |
| | 32.5 | org. | .005 | | | | | | | | | 9 |
| | 33.0 | org. | .005 | | | | | | | | | 10 |
| | 33.5 | org. | .010 | | | | | | | | | 11 |
| | 34.0 | org. | .005 | | | | | | | | | 12 |
| | 34.5 | org. | .005 | | | | | | | | | 13 |
| | 35.0 | org. | .005 | | | | | | | | | 14 |
| | 35.5 | org. | .005 | | | | | | | | | 15 |
| | 36.0 | org. | .005 | | | | | | | | | 16 |
| | 36.5 | org. | .005 | | | | | | | | | 17 |
| | 37.0 | org. | .005 | | | | | | | | | 18 |
| | 37.5 | org. | .005 | | | | | | | | | 19 |
| | 38.0 | org. | .005 | | | | | | | | | 20 |
| | 38.5 | org. | .005 | | | | | | | | | 21 |
| | 39.0 | org. | .005 | | | | | | | | | 22 |
| | 39.5 | | .005 | | | | | | | | | 23 |
| 28S | 40.0E | | .005 | | | | | | | | | 24 |
| | | | | | | | | | | | | 25 |
| 30S | 25.0E | org. | .005 | | | | | | | | | 26 |
| | 25.5 | org. | .005 | | | | | | | | | 27 |
| | 26.0 | org. | .005 | | | | | | | | | 28 |
| | 26.5 | org. | .005 | | | | | | | | | 29 |
| | 27.0 | | .005 | | | | | | | | | 30 |
| | 27.5 | | .005 | | | | | | | | | 31 |
| | 28.0 | | .010 | | | | | | | | | 32 |
| | 28.5 | R.C. | .010 | | | | | | | | | 33 |
| | 29.0 | org. | .005 | | | | | | | | | 34 |
| | 29.5 | | .020 | | | | | | | | | 35 |
| | 30.0 | | .005 | | | | | | | | | 36 |
| | 30.5 | R.C. | .005 | | | | | | | | | 37 |
| | 31.0 | R.C. | .005 | | | | | | | | | 38 |
| 30S | 31.5E | org. | .005 | | | | | | | | | 39 |
| | | | | | | | | | | | | 40 |

All reports are the confidential property of clients
All results are in PPM.

DIGESTION:.....

DETERMINATION:.....

DATE SAMPLES RECEIVED Nov. 14, 1979

DATE REPORTS MAILED Nov. 28, 1979

ASSAYER *Dean Toye*

DEAN TOYE, B.Sc.
CHIEF CHEMIST
CERTIFIED B.C. ASSAYER



To: Ash Croft Resources Ltd.

ACME ANALYTICAL LABORATORIES LTD.

Assaying & Trace Analysis

852 E. Hastings St., Vancouver, B. C. V6A 1R6

phone: 253 - 3158

File No. 0671

Type of Samples Soils

Disposition

GEOCHEMICAL ASSAY CERTIFICATE

All soil and org. samples on this page pulverized

22

22

| SAMPLE No. | | Au | | | | | | | | | | | |
|------------|-------|------|------|--|--|--|--|--|--|--|--|--|----|
| 26S | 25.0E | org. | .005 | | | | | | | | | | 1 |
| | 25.5 | org. | .005 | | | | | | | | | | 2 |
| | 26.0 | org. | .005 | | | | | | | | | | 3 |
| | 26.5 | | .005 | | | | | | | | | | 4 |
| | 27.0 | org. | .005 | | | | | | | | | | 5 |
| | 27.5 | org. | .005 | | | | | | | | | | 6 |
| | 28.0 | R.C. | .005 | | | | | | | | | | 7 |
| | 28.5 | | .005 | | | | | | | | | | 8 |
| | 29.0 | | .005 | | | | | | | | | | 9 |
| | 29.5 | R.C. | .005 | | | | | | | | | | 10 |
| | 30.0 | | .005 | | | | | | | | | | 11 |
| | 30.5 | | .005 | | | | | | | | | | 12 |
| | 31.0 | | .005 | | | | | | | | | | 13 |
| | 31.5 | | .005 | | | | | | | | | | 14 |
| | 32.0 | | .005 | | | | | | | | | | 15 |
| | 32.5 | org. | .005 | | | | | | | | | | 16 |
| | 33.0 | org. | .005 | | | | | | | | | | 17 |
| | 33.5 | org. | .005 | | | | | | | | | | 18 |
| | 34.0 | org. | .005 | | | | | | | | | | 19 |
| | 34.5 | org. | .005 | | | | | | | | | | 20 |
| | 35.0 | | .005 | | | | | | | | | | 21 |
| | 35.5 | org. | .005 | | | | | | | | | | 22 |
| | 36.0 | | .005 | | | | | | | | | | 23 |
| | 36.5 | org. | .005 | | | | | | | | | | 24 |
| | 37.0 | org. | .005 | | | | | | | | | | 25 |
| | 37.5 | org. | .005 | | | | | | | | | | 26 |
| | 38.0 | org. | .005 | | | | | | | | | | 27 |
| | 38.5 | org. | .005 | | | | | | | | | | 28 |
| | 39.0 | org. | .005 | | | | | | | | | | 29 |
| | 39.5 | org. | .005 | | | | | | | | | | 30 |
| 26S | 40.0E | | .005 | | | | | | | | | | 31 |
| | | | | | | | | | | | | | 32 |
| 28S | 25.0E | | .005 | | | | | | | | | | 33 |
| | 25.5 | org. | .005 | | | | | | | | | | 34 |
| | 26.0 | org. | .005 | | | | | | | | | | 35 |
| | 26.5 | | .005 | | | | | | | | | | 36 |
| | 27.0 | org. | .005 | | | | | | | | | | 37 |
| | 27.5 | org. | .005 | | | | | | | | | | 38 |
| 28S | 28.0E | | .005 | | | | | | | | | | 39 |
| | | | | | | | | | | | | | 40 |

All reports are the confidential property of clients
All results are in PPM.

DIGESTION:

DETERMINATION:

DATE SAMPLES RECEIVED Nov. 14, 1979

DATE REPORTS MAILED Nov. 28, 1979

ASSAYER *Dean Toye*

DEAN TOYE, B.Sc.
CHIEF CHEMIST
CERTIFIED B.C. ASSAYER



To: Ash Croft Resources Ltd.

ACME ANALYTICAL LABORATORIES LTD.

Assaying & Trace Analysis

852 E. Hastings St., Vancouver, B. C. V6A 1R6

phone:253 - 3158

File No. 0671

Type of Samples Soils

Disposition

GEOCHEMICAL ASSAY CERTIFICATE

All samples on this page pulverized

21

| SAMPLE No. | | Au | | | | | | | | | | | | |
|------------|-------|------|------|--|--|--|--|--|--|--|--|--|--|----|
| 22S | 32.0E | | .005 | | | | | | | | | | | 1 |
| | 32.5 | org. | .005 | | | | | | | | | | | 2 |
| | 33.0 | | .005 | | | | | | | | | | | 3 |
| | 33.5 | | .005 | | | | | | | | | | | 4 |
| | 34.0 | org. | .005 | | | | | | | | | | | 5 |
| | 34.5 | org. | .005 | | | | | | | | | | | 6 |
| | 35.0 | org. | .005 | | | | | | | | | | | 7 |
| | 35.5 | org. | .005 | | | | | | | | | | | 8 |
| | 36.0 | org. | .005 | | | | | | | | | | | 9 |
| | 36.5 | org. | .005 | | | | | | | | | | | 10 |
| | 37.0 | | .005 | | | | | | | | | | | 11 |
| | 37.5 | | .005 | | | | | | | | | | | 12 |
| | 38.0 | | .005 | | | | | | | | | | | 13 |
| | 38.5 | | .005 | | | | | | | | | | | 14 |
| | 39.0 | org. | .005 | | | | | | | | | | | 15 |
| | 39.5 | org. | .005 | | | | | | | | | | | 16 |
| 22S | 40.0E | | .005 | | | | | | | | | | | 17 |
| | | | | | | | | | | | | | | 18 |
| 24S | 25.0E | | .005 | | | | | | | | | | | 19 |
| | 25.5 | org. | .005 | | | | | | | | | | | 20 |
| | 26.0 | org. | .005 | | | | | | | | | | | 21 |
| | 26.5 | org. | .005 | | | | | | | | | | | 22 |
| | 27.0 | | .005 | | | | | | | | | | | 23 |
| | 27.5 | | .005 | | | | | | | | | | | 24 |
| | 28.0 | | .005 | | | | | | | | | | | 25 |
| | 28.5 | org. | .005 | | | | | | | | | | | 26 |
| | 29.0 | | .005 | | | | | | | | | | | 27 |
| | 30.5 | org. | .005 | | | | | | | | | | | 28 |
| | 32.0 | org. | .005 | | | | | | | | | | | 29 |
| | 37.0 | org. | .005 | | | | | | | | | | | 30 |
| | 38.5 | org. | .005 | | | | | | | | | | | 31 |
| | 39.0 | org. | .005 | | | | | | | | | | | 32 |
| | 39.5 | org. | .005 | | | | | | | | | | | 33 |
| 24S | 40.0E | org. | .005 | | | | | | | | | | | 34 |
| | | | | | | | | | | | | | | 35 |
| | | | | | | | | | | | | | | 36 |
| | | | | | | | | | | | | | | 37 |
| | | | | | | | | | | | | | | 38 |
| | | | | | | | | | | | | | | 39 |
| | | | | | | | | | | | | | | 40 |

All reports are the confidential property of clients
All results are in PPM.

DIGESTION:.....

DETERMINATION:.....

DATE SAMPLES RECEIVED Nov. 14, 1979

DATE REPORTS MAILED Nov. 28, 1979

ASSAYER *Dean Toy*

DEAN TOYE, B.Sc.
CHIEF CHEMIST
CERTIFIED B.C. ASSAYER



To: Ash Croft Resources Ltd.

ACME ANALYTICAL LABORATORIES LTD.

Assaying & Trace Analysis

852 E. Hastings St., Vancouver, B. C. V6A 1R6

phone:253 - 3158

File No. 0671

Type of Samples Soils

Disposition

GEOCHEMICAL ASSAY CERTIFICATE

All samples on this page pulverized

20

| SAMPLE No. | | Au | | | | | | | | | | | | |
|------------|------------|--------|--|--|--|--|--|--|--|--|--|--|--|----|
| 20S 28.5E | org. | .005 | | | | | | | | | | | | 1 |
| 29.0 | org. | .005 | | | | | | | | | | | | 2 |
| 29.5 | org. | .005 | | | | | | | | | | | | 3 |
| 30.0 | org. | .005 | | | | | | | | | | | | 4 |
| 30.5 | | .005 | | | | | | | | | | | | 5 |
| 31.0 | | .005 | | | | | | | | | | | | 6 |
| 31.5 | org. | .005 | | | | | | | | | | | | 7 |
| 32.0 | org. | .005 | | | | | | | | | | | | 8 |
| 32.5 | | .005 | | | | | | | | | | | | 9 |
| 33.0 | org. | .005 | | | | | | | | | | | | 10 |
| 33.5 | org. | .005 | | | | | | | | | | | | 11 |
| 34.0 | org. | .005 | | | | | | | | | | | | 12 |
| 34.5 | org. | .005 | | | | | | | | | | | | 13 |
| 35.0 | org. | .005 | | | | | | | | | | | | 14 |
| 35.5 | org. | .005 | | | | | | | | | | | | 15 |
| 36.0 | org. | .005 | | | | | | | | | | | | 16 |
| 36.5 | org. | .005 | | | | | | | | | | | | 17 |
| 37.0 | not enough | sample | | | | | | | | | | | | 18 |
| 37.5 | not enough | sample | | | | | | | | | | | | 19 |
| 38.0 | org. | .005 | | | | | | | | | | | | 20 |
| 38.5 | org. | .005 | | | | | | | | | | | | 21 |
| 39.0 | org. | .005 | | | | | | | | | | | | 22 |
| 39.5 | org. | .005 | | | | | | | | | | | | 23 |
| 20S 40.0E | org. | .005 | | | | | | | | | | | | 24 |
| | | | | | | | | | | | | | | 25 |
| 22S 25.0E | org. | .005 | | | | | | | | | | | | 26 |
| 25.5 | org. | .005 | | | | | | | | | | | | 27 |
| 26.0 | org. | .005 | | | | | | | | | | | | 28 |
| 26.5 | org. | .005 | | | | | | | | | | | | 29 |
| 27.0 | | .005 | | | | | | | | | | | | 30 |
| 27.5 | org. | .005 | | | | | | | | | | | | 31 |
| 28.0 | org. | .005 | | | | | | | | | | | | 32 |
| 28.5 | org. | .005 | | | | | | | | | | | | 33 |
| 29.0 | org. | .005 | | | | | | | | | | | | 34 |
| 29.5 | org. | .005 | | | | | | | | | | | | 35 |
| 30.0 | org. | .005 | | | | | | | | | | | | 36 |
| 30.5 | org. | .005 | | | | | | | | | | | | 37 |
| 31.0 | org. | .005 | | | | | | | | | | | | 38 |
| 22S 31.5E | org. | .005 | | | | | | | | | | | | 39 |
| | | | | | | | | | | | | | | 40 |

All reports are the confidential property of clients
All results are in PPM.

DIGESTION:.....

DETERMINATION:.....

DATE SAMPLES RECEIVED Nov. 14, 1979

DATE REPORTS MAILED Nov. 28, 1979

ASSAYER *[Signature]*

DEAN TOYE, B.Sc.
CHIEF CHEMIST
CERTIFIED B.C. ASSAYER



To: Ash Croft Resources Ltd.

ACME ANALYTICAL LABORATORIES LTD.

Assaying & Trace Analysis

852 E. Hastings St., Vancouver, B. C. V6A 1R6

phone:253 - 3158

File No. 0671

Type of Samples Soils

Disposition

GEOCHEMICAL ASSAY CERTIFICATE

All samples on this page pulverized

19

| SAMPLE No. | | Au | | | | | | | | | | | | | | | | | | | |
|------------|-------|------|------|--|--|--|--|--|--|--|--|--|--|--|--|--|--|--|--|--|----|
| 18S | 25.0E | org. | .005 | | | | | | | | | | | | | | | | | | 1 |
| | 25.5 | org. | .005 | | | | | | | | | | | | | | | | | | 2 |
| | 26.0 | org. | .005 | | | | | | | | | | | | | | | | | | 3 |
| | 26.5 | org. | .005 | | | | | | | | | | | | | | | | | | 4 |
| | 27.0 | org. | .005 | | | | | | | | | | | | | | | | | | 5 |
| | 27.5 | org. | .005 | | | | | | | | | | | | | | | | | | 6 |
| | 28.0 | org. | .005 | | | | | | | | | | | | | | | | | | 7 |
| | 28.5 | org. | .005 | | | | | | | | | | | | | | | | | | 8 |
| | 29.0 | org. | .005 | | | | | | | | | | | | | | | | | | 9 |
| | 29.5 | org. | .005 | | | | | | | | | | | | | | | | | | 10 |
| | 30.0 | org. | .005 | | | | | | | | | | | | | | | | | | 11 |
| | 30.5 | org. | .005 | | | | | | | | | | | | | | | | | | 12 |
| | 31.0 | org. | .005 | | | | | | | | | | | | | | | | | | 13 |
| | 31.5 | | .005 | | | | | | | | | | | | | | | | | | 14 |
| | 32.0 | | .010 | | | | | | | | | | | | | | | | | | 15 |
| | 32.5 | org. | .005 | | | | | | | | | | | | | | | | | | 16 |
| | 33.0 | org. | .005 | | | | | | | | | | | | | | | | | | 17 |
| | 33.5 | org. | .005 | | | | | | | | | | | | | | | | | | 18 |
| | 34.0 | org. | .005 | | | | | | | | | | | | | | | | | | 19 |
| | 34.5 | org. | .005 | | | | | | | | | | | | | | | | | | 20 |
| | 35.0 | org. | .005 | | | | | | | | | | | | | | | | | | 21 |
| | 35.5 | org. | .005 | | | | | | | | | | | | | | | | | | 22 |
| | 36.0 | org. | .005 | | | | | | | | | | | | | | | | | | 23 |
| | 36.5 | | .005 | | | | | | | | | | | | | | | | | | 24 |
| | 37.0 | | .005 | | | | | | | | | | | | | | | | | | 25 |
| | 37.5 | org. | .005 | | | | | | | | | | | | | | | | | | 26 |
| | 38.0 | | .005 | | | | | | | | | | | | | | | | | | 27 |
| | 38.5 | org. | .005 | | | | | | | | | | | | | | | | | | 28 |
| | 39.0 | org. | .005 | | | | | | | | | | | | | | | | | | 29 |
| | 39.5 | | .005 | | | | | | | | | | | | | | | | | | 30 |
| 18S | 40.0E | org. | .005 | | | | | | | | | | | | | | | | | | 31 |
| | | | | | | | | | | | | | | | | | | | | | 32 |
| 20S | 25.0E | org. | .005 | | | | | | | | | | | | | | | | | | 33 |
| | 25.5 | org. | .005 | | | | | | | | | | | | | | | | | | 34 |
| | 26.0 | org. | .005 | | | | | | | | | | | | | | | | | | 35 |
| | 26.5 | org. | .005 | | | | | | | | | | | | | | | | | | 36 |
| | 27.0 | org. | .005 | | | | | | | | | | | | | | | | | | 37 |
| | 27.5 | org. | .005 | | | | | | | | | | | | | | | | | | 38 |
| 20S | 28.0E | org. | .005 | | | | | | | | | | | | | | | | | | 39 |
| | | | | | | | | | | | | | | | | | | | | | 40 |

All reports are the confidential property of clients
All results are in PPM.

DIGESTION:.....

DETERMINATION:.....

DATE SAMPLES RECEIVED Nov. 14, 1979

DATE REPORTS MAILED Nov. 28, 1979

ASSAYER

DEAN TOYE, B.Sc.
CHIEF CHEMIST
CERTIFIED B.C. ASSAYER



To: Ash Croft Resources Ltd.

ACME ANALYTICAL LABORATORIES LTD.

Assaying & Trace Analysis

852 E. Hastings St., Vancouver, B. C. V6A 1R6

phone:253 - 3158

File No. 0671

Type of Samples Soils

Disposition

GEOCHEMICAL ASSAY CERTIFICATE

All samples on this page pulverized

| SAMPLE No. | | Au | | | | | | | | | | |
|------------|-----|-------|------|------|--|--|--|--|--|--|--|----|
| 18 | 14S | 37.5E | org. | .005 | | | | | | | | 1 |
| | | 38.0 | org. | .005 | | | | | | | | 2 |
| | | 38.5 | org. | .005 | | | | | | | | 3 |
| | | 39.0 | org. | .005 | | | | | | | | 4 |
| | | 39.5 | | .005 | | | | | | | | 5 |
| | 14S | 40.0E | | .005 | | | | | | | | 6 |
| | | | | | | | | | | | | 7 |
| | 16S | 25.0E | | .005 | | | | | | | | 8 |
| | | 2.5 | | .005 | | | | | | | | 9 |
| | | 26.0 | | .005 | | | | | | | | 10 |
| | | 26.5 | | .005 | | | | | | | | 11 |
| | | 27.0 | org. | .005 | | | | | | | | 12 |
| | | 27.5 | org. | .005 | | | | | | | | 13 |
| | | 28.0 | | .005 | | | | | | | | 14 |
| | | 28.5 | | .005 | | | | | | | | 15 |
| | | 29.0 | org. | .005 | | | | | | | | 16 |
| | | 29.5 | org. | .005 | | | | | | | | 17 |
| | | 30.0 | org. | .005 | | | | | | | | 18 |
| | | 30.5 | org. | .005 | | | | | | | | 19 |
| | | 31.0 | org. | .005 | | | | | | | | 20 |
| | | 31.5 | org. | .005 | | | | | | | | 21 |
| | | 32.0 | | .005 | | | | | | | | 22 |
| | | 32.5 | org. | .005 | | | | | | | | 23 |
| | | 33.0 | | .005 | | | | | | | | 24 |
| | | 33.5 | org. | .005 | | | | | | | | 25 |
| | | 34.0 | org. | .005 | | | | | | | | 26 |
| | | 34.5 | org. | .005 | | | | | | | | 27 |
| | | 35.0 | org. | .005 | | | | | | | | 28 |
| | | 35.5 | org. | .005 | | | | | | | | 29 |
| | | 36.0 | org. | .005 | | | | | | | | 30 |
| | | 36.5 | org. | .005 | | | | | | | | 31 |
| | | 37.0 | org. | .020 | | | | | | | | 32 |
| | | 37.5 | | .005 | | | | | | | | 33 |
| | | 38.0 | org. | .005 | | | | | | | | 34 |
| | | 38.5 | | .005 | | | | | | | | 35 |
| | | 39.0 | | .005 | | | | | | | | 36 |
| | | 39.5 | | .005 | | | | | | | | 37 |
| | 16S | 40.0E | | .005 | | | | | | | | 38 |
| | | | | | | | | | | | | 39 |
| | | | | | | | | | | | | 40 |

All reports are the confidential property of clients
All results are in PPM.

DIGESTION:.....

DETERMINATION:.....

DATE SAMPLES RECEIVED Nov. 14, 1979

DATE REPORTS MAILED Nov. 28, 1979

ASSAYER *[Signature]*

DEAN TOYE, B.Sc.
CHIEF CHEMIST
CERTIFIED B.C. ASSAYER



To: Ashcroft Resources Ltd.

ACME ANALYTICAL LABORATORIES LTD.

Assaying & Trace Analysis

852 E. Hastings St., Vancouver, B. C. V6A 1R6

phone:253 - 3158

File No. 0671

Type of Samples Soils

Disposition

GEOCHEMICAL ASSAY CERTIFICATE

All soil and org. samples on this page pulverized

17

| SAMPLE No. | | Au | | | | | | | | | | | |
|------------|------|------|--|--|--|--|--|--|--|--|--|--|----|
| 12S 34.0E | org. | .005 | | | | | | | | | | | 1 |
| 34.5 | org. | .005 | | | | | | | | | | | 2 |
| 35.0 | | .005 | | | | | | | | | | | 3 |
| 35.5 | | .005 | | | | | | | | | | | 4 |
| 36.0 | | .005 | | | | | | | | | | | 5 |
| 36.5 | org. | .005 | | | | | | | | | | | 6 |
| 37.0 | org. | .005 | | | | | | | | | | | 7 |
| 37.5 | org. | .005 | | | | | | | | | | | 8 |
| 38.0 | org. | .005 | | | | | | | | | | | 9 |
| 38.5 | org. | .005 | | | | | | | | | | | 10 |
| 39.0 | org. | .005 | | | | | | | | | | | 11 |
| 39.5 | org. | .005 | | | | | | | | | | | 12 |
| 12S 40.0E | org. | .005 | | | | | | | | | | | 13 |
| | | | | | | | | | | | | | 14 |
| 14S 25.0E | org. | .005 | | | | | | | | | | | 15 |
| 25.5 | org. | .005 | | | | | | | | | | | 16 |
| 26.0 | org. | .005 | | | | | | | | | | | 17 |
| 26.5 | | .005 | | | | | | | | | | | 18 |
| 27.0 | R.C. | .005 | | | | | | | | | | | 19 |
| 27.5 | org. | .005 | | | | | | | | | | | 20 |
| 28.0 | | .005 | | | | | | | | | | | 21 |
| 28.5 | | .005 | | | | | | | | | | | 22 |
| 29.0 | | .005 | | | | | | | | | | | 23 |
| 29.5 | | .005 | | | | | | | | | | | 24 |
| 30.0 | org. | .005 | | | | | | | | | | | 25 |
| 30.5 | org. | .005 | | | | | | | | | | | 26 |
| 31.0 | org. | .005 | | | | | | | | | | | 27 |
| 31.5 | org. | .005 | | | | | | | | | | | 28 |
| 32.0 | org. | .005 | | | | | | | | | | | 29 |
| 32.5 | | .005 | | | | | | | | | | | 30 |
| 33.0 | | .005 | | | | | | | | | | | 31 |
| 33.5 | | .005 | | | | | | | | | | | 32 |
| 34.0 | org. | .005 | | | | | | | | | | | 33 |
| 34.5 | org. | .005 | | | | | | | | | | | 34 |
| 35.0 | | .005 | | | | | | | | | | | 35 |
| 35.5 | org. | .005 | | | | | | | | | | | 36 |
| 36.0 | org. | .005 | | | | | | | | | | | 37 |
| 36.5 | org. | .005 | | | | | | | | | | | 38 |
| 14S 37.0E | org. | .005 | | | | | | | | | | | 39 |
| | | | | | | | | | | | | | 40 |

All reports are the confidential property of clients
All results are in PPM.

DIGESTION:.....

DETERMINATION:.....

DATE SAMPLES RECEIVED Nov. 14, 1979

DATE REPORTS MAILED Nov. 28, 1979

ASSAYER

DEAN TOYE, B.Sc.
CHIEF CHEMIST
CERTIFIED B.C. ASSAYER



To: Ash Croft Resources Ltd.

ACME ANALYTICAL LABORATORIES LTD.

Assaying & Trace Analysis

852 E. Hastings St., Vancouver, B. C. V6A 1R6

phone: 253 - 3158

File No. 0671

Type of Samples Soils

Disposition

GEOCHEMICAL ASSAY CERTIFICATE

All soil and org. samples on this page pulverized

16

| SAMPLE No. | | Au | | | | | | | | | | | |
|------------|-------|------|------|--|--|--|--|--|--|--|--|--|----|
| 10S | 30.0E | | .005 | | | | | | | | | | 1 |
| | 30.5 | | .005 | | | | | | | | | | 2 |
| | 31.0 | | .040 | | | | | | | | | | 3 |
| | 31.5 | | .005 | | | | | | | | | | 4 |
| | 32.0 | R.C. | .005 | | | | | | | | | | 5 |
| | 32.5 | org. | .005 | | | | | | | | | | 6 |
| | 33.0 | org. | .005 | | | | | | | | | | 7 |
| | 33.5 | org. | .005 | | | | | | | | | | 8 |
| | 34.0 | | .005 | | | | | | | | | | 9 |
| | 34.5 | org. | .005 | | | | | | | | | | 10 |
| | 35.0 | org. | .005 | | | | | | | | | | 11 |
| | 35.5 | org. | .005 | | | | | | | | | | 12 |
| | 36.0 | org. | .005 | | | | | | | | | | 13 |
| | 36.5 | | .005 | | | | | | | | | | 14 |
| | 37.0 | org. | .005 | | | | | | | | | | 15 |
| | 37.5 | | .005 | | | | | | | | | | 16 |
| | 38.0 | R.C. | .005 | | | | | | | | | | 17 |
| | 38.5 | org. | .010 | | | | | | | | | | 18 |
| | 39.0 | org. | .005 | | | | | | | | | | 19 |
| | 39.5 | org. | .005 | | | | | | | | | | 20 |
| 10S | 40.0E | | .005 | | | | | | | | | | 21 |
| | | | | | | | | | | | | | 22 |
| 12S | 25E | org. | .005 | | | | | | | | | | 23 |
| | 25.5 | | .005 | | | | | | | | | | 24 |
| | 26.0 | | .005 | | | | | | | | | | 25 |
| | 26.5 | org. | .005 | | | | | | | | | | 26 |
| | 27.0 | | .005 | | | | | | | | | | 27 |
| | 27.5 | | .005 | | | | | | | | | | 28 |
| | 28.0 | | .005 | | | | | | | | | | 29 |
| | 28.5 | | .005 | | | | | | | | | | 30 |
| | 29.0 | | .005 | | | | | | | | | | 31 |
| | 29.5 | | .005 | | | | | | | | | | 32 |
| | 30.5 | | .005 | | | | | | | | | | 33 |
| | 31.0 | org. | .005 | | | | | | | | | | 34 |
| | 31.5 | | .005 | | | | | | | | | | 35 |
| | 32.0 | | .005 | | | | | | | | | | 36 |
| | 32.5 | org. | .005 | | | | | | | | | | 37 |
| | 33.0 | | .005 | | | | | | | | | | 38 |
| 12S | 33.5E | org. | .005 | | | | | | | | | | 39 |
| | | | | | | | | | | | | | 40 |

All reports are the confidential property of clients
All results are in PPM.

DIGESTION:.....

DETERMINATION:.....

DATE SAMPLES RECEIVED Nov. 14, 1979

DATE REPORTS MAILED Nov. 28, 1979

ASSAYER *[Signature]*

DEAN TOYE, B.Sc.
CHIEF CHEMIST
CERTIFIED B.C. ASSAYER



To: Ash Croft Resources Ltd.

ACME ANALYTICAL LABORATORIES LTD.

Assaying & Trace Analysis

852 E. Hastings St., Vancouver, B. C. V6A 1R6

phone:253 - 3158

File No. 0671

Type of Samples Soils

Disposition

GEOCHEMICAL ASSAY CERTIFICATE

All samples on this page pulverized

15

| SAMPLE No. | | Au | | | | | | | | | |
|------------|-------|------|------|--|--|--|--|--|--|--|----|
| 8S | 26.0E | org. | .005 | | | | | | | | 1 |
| | 26.5 | org. | .005 | | | | | | | | 2 |
| | 27.0 | | .005 | | | | | | | | 3 |
| | 27.5 | | .005 | | | | | | | | 4 |
| | 28.0 | | .005 | | | | | | | | 5 |
| | 28.5 | | .005 | | | | | | | | 6 |
| | 29.0 | | .005 | | | | | | | | 7 |
| | 29.5 | | .005 | | | | | | | | 8 |
| | 30.0 | org. | .005 | | | | | | | | 9 |
| | 30.5 | org. | .005 | | | | | | | | 10 |
| | 31.0 | | .005 | | | | | | | | 11 |
| | 31.5 | org. | .010 | | | | | | | | 12 |
| | 32.0 | org. | .005 | | | | | | | | 13 |
| | 32.5 | org. | .005 | | | | | | | | 14 |
| | 33.0 | org. | .005 | | | | | | | | 15 |
| | 33.5 | | .005 | | | | | | | | 16 |
| | 34.0 | org. | .005 | | | | | | | | 17 |
| | 34.5 | | .005 | | | | | | | | 18 |
| | 35.0 | | .005 | | | | | | | | 19 |
| | 35.5 | | .005 | | | | | | | | 20 |
| | 36.0 | | .005 | | | | | | | | 21 |
| | 36.5 | | .005 | | | | | | | | 22 |
| | 37.0 | | .005 | | | | | | | | 23 |
| | | | | | | | | | | | 24 |
| | 38.0 | | .005 | | | | | | | | 25 |
| | 38.5 | org. | .005 | | | | | | | | 26 |
| | 39.0 | | .005 | | | | | | | | 27 |
| | 39.5 | | .005 | | | | | | | | 28 |
| 8S | 40.0E | | .005 | | | | | | | | 29 |
| | | | | | | | | | | | 30 |
| 10S | 25.0E | | .010 | | | | | | | | 31 |
| | 25.5 | | .020 | | | | | | | | 32 |
| | 26.0 | | .005 | | | | | | | | 33 |
| | 26.5 | | .005 | | | | | | | | 34 |
| | 27.0 | | .010 | | | | | | | | 35 |
| | 27.5 | org. | .005 | | | | | | | | 36 |
| | 28.0 | org. | .005 | | | | | | | | 37 |
| | 28.5 | | .005 | | | | | | | | 38 |
| | 29.0 | | .005 | | | | | | | | 39 |
| 10S | 29.5E | | .005 | | | | | | | | 40 |

All reports are the confidential property of clients
All results are in PPM.

DIGESTION:.....

DETERMINATION:.....

DATE SAMPLES RECEIVED Nov. 14, 1979

DATE REPORTS MAILED Nov. 26, 1979

ASSAYER

DEAN TOYE, B.Sc.
CHIEF CHEMIST
CERTIFIED B.C. ASSAYER



To: ASH Croft Resources Ltd.

ACME ANALYTICAL LABORATORIES LTD.

Assaying & Trace Analysis

852 E. Hastings St., Vancouver, B. C. V6A 1R6

phone: 253 - 3158

File No. 0671

Type of Samples Soils

Disposition

GEOCHEMICAL ASSAY CERTIFICATE

All samples on this page pulverized

14

| SAMPLE No. | | Au | | | | | | | | | | | |
|------------|-------|------|------|--|--|--|--|--|--|--|--|--|----|
| 4S | 38.0E | org. | .005 | | | | | | | | | | 1 |
| | 38.5 | org. | .005 | | | | | | | | | | 2 |
| | 39.0 | | .005 | | | | | | | | | | 3 |
| | 39.5 | | .005 | | | | | | | | | | 4 |
| 4S | 40.0E | org. | .005 | | | | | | | | | | 5 |
| | | | | | | | | | | | | | 6 |
| 6S | 25.0E | | .005 | | | | | | | | | | 7 |
| | 25.5 | | .005 | | | | | | | | | | 8 |
| | 26.0 | | .005 | | | | | | | | | | 9 |
| | 26.5 | | .005 | | | | | | | | | | 10 |
| | 27.0 | org. | .005 | | | | | | | | | | 11 |
| | 27.5 | org. | .005 | | | | | | | | | | 12 |
| | 28.0 | org. | .005 | | | | | | | | | | 13 |
| | 28.5 | org. | .010 | | | | | | | | | | 14 |
| | 29.0 | org. | .005 | | | | | | | | | | 15 |
| | 29.5 | org. | .005 | | | | | | | | | | 16 |
| | 30.0 | org. | .005 | | | | | | | | | | 17 |
| | 30.5 | org. | .005 | | | | | | | | | | 18 |
| | 31.0 | org. | .005 | | | | | | | | | | 19 |
| | 31.5 | org. | .010 | | | | | | | | | | 20 |
| | 32.0 | | .005 | | | | | | | | | | 21 |
| | 32.5 | | .005 | | | | | | | | | | 22 |
| | 33.0 | | .005 | | | | | | | | | | 23 |
| | 33.5 | org. | .005 | | | | | | | | | | 24 |
| | 34.0 | org. | .005 | | | | | | | | | | 25 |
| | 34.5 | org. | .005 | | | | | | | | | | 26 |
| | 35.0 | | .005 | | | | | | | | | | 27 |
| | 35.5 | | .020 | | | | | | | | | | 28 |
| | 36.0 | | .010 | | | | | | | | | | 29 |
| | 36.5 | org. | .005 | | | | | | | | | | 30 |
| | 37.0 | org. | .005 | | | | | | | | | | 31 |
| | 37.5 | org. | .005 | | | | | | | | | | 32 |
| | 38.0 | org. | .005 | | | | | | | | | | 33 |
| | 38.5 | | .010 | | | | | | | | | | 34 |
| | 39.0 | | .005 | | | | | | | | | | 35 |
| | 39.5 | | .005 | | | | | | | | | | 36 |
| 6S | 40.0E | org. | .005 | | | | | | | | | | 37 |
| | | | | | | | | | | | | | 38 |
| 8S | 25.0E | org. | .005 | | | | | | | | | | 39 |
| 8S | 25.5E | org. | .005 | | | | | | | | | | 40 |

All reports are the confidential property of clients
All results are in PPM.

DIGESTION:.....

DETERMINATION:.....

DATE SAMPLES RECEIVED NOV. 14, 1979

DATE REPORTS MAILED Nov. 28, 1979

ASSAYER *Dean Toyé*

DEAN TOYE, B.Sc.
CHIEF CHEMIST
CERTIFIED B.C. ASSAYER



To: Ashcroft Resources Ltd.,

ACME ANALYTICAL LABORATORIES LTD.

Assaying & Trace Analysis

852 E. Hastings St., Vancouver, B. C. V6A 1R6

phone:253 - 3158

File No. 0671

Type of Samples Soils

Disposition

GEOCHEMICAL ASSAY CERTIFICATE

All sample on this page pulverized.

13

| SAMPLE No. | | Au | | | | | | | | | | | |
|------------|-------|------|------|--|--|--|--|--|--|--|--|--|----|
| 2S | 34.5E | org. | .020 | | | | | | | | | | 1 |
| | 35.0 | | .005 | | | | | | | | | | 2 |
| | 35.5 | | .005 | | | | | | | | | | 3 |
| | 36.0 | | .005 | | | | | | | | | | 4 |
| | 36.5 | | .005 | | | | | | | | | | 5 |
| | 37.0 | | .005 | | | | | | | | | | 6 |
| | 37.5 | | .005 | | | | | | | | | | 7 |
| | 38.0 | | .005 | | | | | | | | | | 8 |
| | 38.5 | | .005 | | | | | | | | | | 9 |
| | 39.0 | | .005 | | | | | | | | | | 10 |
| | 39.5 | | .005 | | | | | | | | | | 11 |
| 2S | 40.0E | | .005 | | | | | | | | | | 12 |
| | | | | | | | | | | | | | 13 |
| 4S | 25.0E | org. | .005 | | | | | | | | | | 14 |
| | 25.5 | org. | .005 | | | | | | | | | | 15 |
| | 26.0 | org. | .005 | | | | | | | | | | 16 |
| | 26.5 | org. | .005 | | | | | | | | | | 17 |
| | 27.0 | org. | .005 | | | | | | | | | | 18 |
| | 27.5 | org. | .005 | | | | | | | | | | 19 |
| | 28.0 | org. | .005 | | | | | | | | | | 20 |
| | 28.5 | org. | .005 | | | | | | | | | | 21 |
| | 29.0 | | .005 | | | | | | | | | | 22 |
| | 29.5 | | .005 | | | | | | | | | | 23 |
| | 30.0 | | .005 | | | | | | | | | | 24 |
| | 30.5 | | .005 | | | | | | | | | | 25 |
| | 31.0 | org. | .005 | | | | | | | | | | 26 |
| | 31.5 | org. | .005 | | | | | | | | | | 27 |
| | 32.0 | org. | .005 | | | | | | | | | | 28 |
| | 32.5 | | .005 | | | | | | | | | | 29 |
| | 33.0 | org. | .005 | | | | | | | | | | 30 |
| | 33.5 | | .005 | | | | | | | | | | 31 |
| | 34.0 | | .005 | | | | | | | | | | 32 |
| | 34.5 | | .005 | | | | | | | | | | 33 |
| | 35.0 | | .005 | | | | | | | | | | 34 |
| | 35.5 | | .005 | | | | | | | | | | 35 |
| | 36.0 | org. | .005 | | | | | | | | | | 36 |
| | 36.5 | | .005 | | | | | | | | | | 37 |
| | 37.0 | | .005 | | | | | | | | | | 38 |
| 4S | 37.5E | | .005 | | | | | | | | | | 39 |
| | | | | | | | | | | | | | 40 |

All reports are the confidential property of clients
All results are in PPM.

DIGESTION:.....

DETERMINATION:.....

DATE SAMPLES RECEIVED Nov. 14, 1979

DATE REPORTS MAILED Nov. 26, 1979

ASSAYER *[Signature]*

DEAN TOYE, B.Sc.
CHIEF CHEMIST
CERTIFIED B.C. ASSAYER



To: Ash Croft Resources Ltd.

ACME ANALYTICAL LABORATORIES LTD.

Assaying & Trace Analysis

852 E. Hastings St., Vancouver, B. C. V6A 1R6

phone:253 - 3158

File No. 0671

Type of Samples Soils

Disposition

GEOCHEMICAL ASSAY CERTIFICATE

All samples on this page pulverized

| SAMPLE No. | | Au | | | | | | | | | | | | | | | | | |
|------------|-------|------|------|--|--|--|--|--|--|--|--|--|--|--|--|--|--|--|----|
| ON | 29.5E | | .005 | | | | | | | | | | | | | | | | 1 |
| | 30.0 | | .005 | | | | | | | | | | | | | | | | 2 |
| | 30.5 | org. | .005 | | | | | | | | | | | | | | | | 3 |
| | 31.0 | | .005 | | | | | | | | | | | | | | | | 4 |
| | 31.5 | | .040 | | | | | | | | | | | | | | | | 5 |
| | 32.0 | | .005 | | | | | | | | | | | | | | | | 6 |
| | 32.5 | | .005 | | | | | | | | | | | | | | | | 7 |
| | 33.0 | | .005 | | | | | | | | | | | | | | | | 8 |
| | 33.5 | org. | .005 | | | | | | | | | | | | | | | | 9 |
| | 34.0 | | .005 | | | | | | | | | | | | | | | | 10 |
| | 34.5 | | .005 | | | | | | | | | | | | | | | | 11 |
| | 35.0 | | .005 | | | | | | | | | | | | | | | | 12 |
| | 35.5 | | .005 | | | | | | | | | | | | | | | | 13 |
| | 36.0 | org. | .005 | | | | | | | | | | | | | | | | 14 |
| | 36.5 | | .005 | | | | | | | | | | | | | | | | 15 |
| | 37.0 | org. | .005 | | | | | | | | | | | | | | | | 16 |
| | 37.5 | | .005 | | | | | | | | | | | | | | | | 17 |
| | 38.0 | | .005 | | | | | | | | | | | | | | | | 18 |
| | 39.0 | | .005 | | | | | | | | | | | | | | | | 19 |
| | 39.5 | org. | .005 | | | | | | | | | | | | | | | | 20 |
| ON | 40.0E | org. | .005 | | | | | | | | | | | | | | | | 21 |
| | | | | | | | | | | | | | | | | | | | 22 |
| 2S | 25.0E | org. | .005 | | | | | | | | | | | | | | | | 23 |
| | 25.5 | org. | .005 | | | | | | | | | | | | | | | | 24 |
| | 26.0 | org. | .005 | | | | | | | | | | | | | | | | 25 |
| | 26.5 | org. | .005 | | | | | | | | | | | | | | | | 26 |
| | 27.0 | org. | .005 | | | | | | | | | | | | | | | | 27 |
| | 27.5 | org. | .005 | | | | | | | | | | | | | | | | 28 |
| | 28.0 | org. | .005 | | | | | | | | | | | | | | | | 29 |
| | 28.5 | org. | .005 | | | | | | | | | | | | | | | | 30 |
| | 29.0 | org. | .005 | | | | | | | | | | | | | | | | 31 |
| | 30.0 | org. | .005 | | | | | | | | | | | | | | | | 32 |
| | 30.5 | org. | .005 | | | | | | | | | | | | | | | | 33 |
| | 31.0 | org. | .005 | | | | | | | | | | | | | | | | 34 |
| | 31.5 | org. | .005 | | | | | | | | | | | | | | | | 35 |
| | 32.0 | org. | .005 | | | | | | | | | | | | | | | | 36 |
| | 32.5 | org. | .005 | | | | | | | | | | | | | | | | 37 |
| | 33.0 | org. | .005 | | | | | | | | | | | | | | | | 38 |
| 2S | 34.0E | org. | .005 | | | | | | | | | | | | | | | | 39 |
| | | | | | | | | | | | | | | | | | | | 40 |

All reports are the confidential property of clients
All results are in PPM.

REGISTRATION:.....

DETERMINATION:.....

DATE SAMPLES RECEIVED Nov. 14, 1979

DATE REPORTS MAILED Nov. 26, 1979

ASSAYER

DEAN TOYE, B.Sc.
CHIEF CHEMIST
CERTIFIED B.C. ASSAYER



To: Ash Croft Resources Ltd.

ACME ANALYTICAL LABORATORIES LTD.

Assaying & Trace Analysis

852 E. Hastings St., Vancouver, B. C. V6A 1R6

phone:253 - 3158

File No. 0671
Type of Samples Soils
Disposition

GEOCHEMICAL ASSAY CERTIFICATE

All soil and org. samples on this page pulverized

11

| SAMPLE No. | | Au | | | | | | | | | | | | |
|------------|-------|------|------|--|--|--|--|--|--|--|--|--|--|----|
| 38E | 9.5N | | .005 | | | | | | | | | | | 1 |
| 38E | 10.ON | org. | .005 | | | | | | | | | | | 2 |
| | | | | | | | | | | | | | | 3 |
| 40E | 0.5N | | .005 | | | | | | | | | | | 4 |
| | 1.0 | org. | .005 | | | | | | | | | | | 5 |
| | 1.5 | | .005 | | | | | | | | | | | 6 |
| | 2.0 | org. | .005 | | | | | | | | | | | 7 |
| | 2.5 | R.C. | .010 | | | | | | | | | | | 8 |
| | 3.0 | | .005 | | | | | | | | | | | 9 |
| | 3.5 | | .005 | | | | | | | | | | | 10 |
| | 4.0 | | .005 | | | | | | | | | | | 11 |
| | 4.5 | R.C. | .005 | | | | | | | | | | | 12 |
| | 5.0 | | .005 | | | | | | | | | | | 13 |
| | 5.5 | | .005 | | | | | | | | | | | 14 |
| | | | | | | | | | | | | | | 15 |
| | 7.0 | | .005 | | | | | | | | | | | 16 |
| | 7.5 | org. | .005 | | | | | | | | | | | 17 |
| | | | | | | | | | | | | | | 18 |
| | 8.5 | | .005 | | | | | | | | | | | 19 |
| | 9.0 | | .005 | | | | | | | | | | | 20 |
| | 9.5 | | .005 | | | | | | | | | | | 21 |
| 40E | 10.ON | org. | .005 | | | | | | | | | | | 22 |
| | | | | | | | | | | | | | | 23 |
| ON | 20.5E | | .005 | | | | | | | | | | | 24 |
| | 21.0 | | .005 | | | | | | | | | | | 25 |
| | 21.5 | | .005 | | | | | | | | | | | 26 |
| | 22.5 | R.C. | .005 | | | | | | | | | | | 27 |
| | 23.0 | | .005 | | | | | | | | | | | 28 |
| | 23.5 | | .005 | | | | | | | | | | | 29 |
| | 24.0 | | .005 | | | | | | | | | | | 30 |
| | 24.5 | | .005 | | | | | | | | | | | 31 |
| | 25.0 | | .005 | | | | | | | | | | | 32 |
| | 25.5 | | .005 | | | | | | | | | | | 33 |
| | 26.0 | | .005 | | | | | | | | | | | 34 |
| | 26.5 | | .005 | | | | | | | | | | | 35 |
| | 27.0 | | .005 | | | | | | | | | | | 36 |
| | 27.5 | org. | .005 | | | | | | | | | | | 37 |
| | 28.0 | org. | .005 | | | | | | | | | | | 38 |
| | 28.5 | org. | .005 | | | | | | | | | | | 39 |
| ON | 29.0E | org. | .005 | | | | | | | | | | | 40 |

All reports are the confidential property of clients
All results are in PPM.

DIGESTION:.....

DETERMINATION:.....

DATE SAMPLES RECEIVED Nov. 14, 1979

DATE REPORTS MAILED Nov. 26, 1979

ASSAYER

DEAN TOYE, B.Sc.
CHIEF CHEMIST
CERTIFIED B.C. ASSAYER



To: Ash Croft Resources Ltd.

ACME ANALYTICAL LABORATORIES LTD.

Assaying & Trace Analysis

852 E. Hastings St., Vancouver, B. C. V6A 1R6

phone:253 - 3158

File No. 0671

Type of Samples Soils

Disposition

GEOCHEMICAL ASSAY CERTIFICATE

All samples on this page pulverized

10

| SAMPLE No. | | Au | | | | | | | | | | | | |
|------------|-------|-----------|--|--|--|--|--|--|--|--|--|--|--|----|
| 36E | 0.5N | .005 | | | | | | | | | | | | 1 |
| | 1.0 | org. .005 | | | | | | | | | | | | 2 |
| | 1.5 | org. .005 | | | | | | | | | | | | 3 |
| | 2.0 | org. .005 | | | | | | | | | | | | 4 |
| | 2.5 | org. .005 | | | | | | | | | | | | 5 |
| | 3.0 | .005 | | | | | | | | | | | | 6 |
| | 3.5 | .005 | | | | | | | | | | | | 7 |
| | 4.0 | .005 | | | | | | | | | | | | 8 |
| | 4.5 | .005 | | | | | | | | | | | | 9 |
| | 5.0 | org. .005 | | | | | | | | | | | | 10 |
| | 5.5 | .005 | | | | | | | | | | | | 11 |
| | 6.0 | .005 | | | | | | | | | | | | 12 |
| | 6.5 | .005 | | | | | | | | | | | | 13 |
| | 7.0 | .005 | | | | | | | | | | | | 14 |
| | 7.5 | org. .005 | | | | | | | | | | | | 15 |
| | 8.0 | .010 | | | | | | | | | | | | 16 |
| | 8.5 | .005 | | | | | | | | | | | | 17 |
| | 9.0 | .005 | | | | | | | | | | | | 18 |
| | 9.5 | .005 | | | | | | | | | | | | 19 |
| 36E | 10.0N | .005 | | | | | | | | | | | | 20 |
| | | | | | | | | | | | | | | 21 |
| 38E | 0.5N | .005 | | | | | | | | | | | | 22 |
| | 1.0 | .005 | | | | | | | | | | | | 23 |
| | 1.5 | .005 | | | | | | | | | | | | 24 |
| | 2.0 | .005 | | | | | | | | | | | | 25 |
| | 2.5 | .005 | | | | | | | | | | | | 26 |
| | 3.0 | .005 | | | | | | | | | | | | 27 |
| | 3.5 | .005 | | | | | | | | | | | | 28 |
| | 4.0 | .005 | | | | | | | | | | | | 29 |
| | 4.5 | org. .005 | | | | | | | | | | | | 30 |
| | 5.0 | .005 | | | | | | | | | | | | 31 |
| | 5.5 | .005 | | | | | | | | | | | | 32 |
| | 6.0 | .005 | | | | | | | | | | | | 33 |
| | 6.5 | org. .005 | | | | | | | | | | | | 34 |
| | 7.0 | .005 | | | | | | | | | | | | 35 |
| | 7.5 | .005 | | | | | | | | | | | | 36 |
| | 8.0 | org. .005 | | | | | | | | | | | | 37 |
| | 8.5 | .005 | | | | | | | | | | | | 38 |
| 38E | 9.0N | .005 | | | | | | | | | | | | 39 |
| | | | | | | | | | | | | | | 40 |

All reports are the confidential property of clients
All results are in PPM.

DIGESTION:.....

DETERMINATION:.....

DATE SAMPLES RECEIVED Nov. 14, 1979

DATE REPORTS MAILED Nov. 26, 1979

ASSAYER *Dean Toy*

DEAN TOYE, B.Sc.
CHIEF CHEMIST
CERTIFIED B.C. ASSAYER



To: Ashcroft Resources Ltd.,

ACME ANALYTICAL LABORATORIES LTD.

Assaying & Trace Analysis

852 E. Hastings St., Vancouver, B. C. V6A 1R6

phone: 253 - 3158

File No. 0671

Type of Samples Soils

Disposition

GEOCHEMICAL ASSAY CERTIFICATE

All sample on this page pulverized.

9

| SAMPLE No. | | Au | | | | | | | | | | | | | | | | | | |
|------------|------|------|--|--|--|--|--|--|--|--|--|--|--|--|--|--|--|--|--|----|
| 34E 0.5N | | .005 | | | | | | | | | | | | | | | | | | 1 |
| 1.0 | | .005 | | | | | | | | | | | | | | | | | | 2 |
| 1.5 | | .005 | | | | | | | | | | | | | | | | | | 3 |
| 2.0 | | .005 | | | | | | | | | | | | | | | | | | 4 |
| 2.5 | org. | .005 | | | | | | | | | | | | | | | | | | 5 |
| 3.0 | | .005 | | | | | | | | | | | | | | | | | | 6 |
| 3.5 | | .005 | | | | | | | | | | | | | | | | | | 7 |
| 4.0 | | .005 | | | | | | | | | | | | | | | | | | 8 |
| 4.5 | | .005 | | | | | | | | | | | | | | | | | | 9 |
| 5.0 | | .005 | | | | | | | | | | | | | | | | | | 10 |
| 5.5 | org. | .005 | | | | | | | | | | | | | | | | | | 11 |
| 6.0 | | .005 | | | | | | | | | | | | | | | | | | 12 |
| 6.5 | | .005 | | | | | | | | | | | | | | | | | | 13 |
| 7.0 | | .005 | | | | | | | | | | | | | | | | | | 14 |
| 7.5 | | .005 | | | | | | | | | | | | | | | | | | 15 |
| 8.0 | R.C. | .005 | | | | | | | | | | | | | | | | | | 16 |
| 8.5 | | .005 | | | | | | | | | | | | | | | | | | 17 |
| 9.0 | | .005 | | | | | | | | | | | | | | | | | | 18 |
| 9.5 | | .005 | | | | | | | | | | | | | | | | | | 19 |
| 34E 10.0N | | .005 | | | | | | | | | | | | | | | | | | 20 |
| | | | | | | | | | | | | | | | | | | | | 21 |
| | | | | | | | | | | | | | | | | | | | | 22 |
| | | | | | | | | | | | | | | | | | | | | 23 |
| | | | | | | | | | | | | | | | | | | | | 24 |
| | | | | | | | | | | | | | | | | | | | | 25 |
| | | | | | | | | | | | | | | | | | | | | 26 |
| | | | | | | | | | | | | | | | | | | | | 27 |
| | | | | | | | | | | | | | | | | | | | | 28 |
| | | | | | | | | | | | | | | | | | | | | 29 |
| | | | | | | | | | | | | | | | | | | | | 30 |
| | | | | | | | | | | | | | | | | | | | | 31 |
| | | | | | | | | | | | | | | | | | | | | 32 |
| | | | | | | | | | | | | | | | | | | | | 33 |
| | | | | | | | | | | | | | | | | | | | | 34 |
| | | | | | | | | | | | | | | | | | | | | 35 |
| | | | | | | | | | | | | | | | | | | | | 36 |
| | | | | | | | | | | | | | | | | | | | | 37 |
| | | | | | | | | | | | | | | | | | | | | 38 |
| | | | | | | | | | | | | | | | | | | | | 39 |
| | | | | | | | | | | | | | | | | | | | | 40 |

All reports are the confidential property of clients
All results are in PPM.
DIGESTION:.....
DETERMINATION:.....

DATE SAMPLES RECEIVED Nov. 14, 1979
DATE REPORTS MAILED Nov. 26, 1979
ASSAYER *[Signature]*

DEAN TOYE, B.Sc.
CHIEF CHEMIST
CERTIFIED B.C. ASSAYER



To: Ashcroft Resources Ltd.,

ACME ANALYTICAL LABORATORIES LTD.

Assaying & Trace Analysis

852 E. Hastings St., Vancouver, B. C. V6A 1R6

phone:253 - 3158

File No. 0671

Type of Samples soils

Disposition

GEOCHEMICAL ASSAY CERTIFICATE

All sample on this page pulverized.

8

| SAMPLE No. | | Au | | | | | | | | | | | |
|------------|-------|------|------|--|--|--|--|--|--|--|--|--|----|
| 30E | 0.5N | R.C. | .005 | | | | | | | | | | 1 |
| | 1.0 | org. | .005 | | | | | | | | | | 2 |
| | 2.0 | | .010 | | | | | | | | | | 3 |
| | 2.5 | | .020 | | | | | | | | | | 4 |
| | 3.0 | org. | .005 | | | | | | | | | | 5 |
| | 3.5 | | .020 | | | | | | | | | | 6 |
| | 4.0 | org. | .005 | | | | | | | | | | 7 |
| | 4.5 | org. | .010 | | | | | | | | | | 8 |
| | 5.0 | | .005 | | | | | | | | | | 9 |
| | 5.5 | | .010 | | | | | | | | | | 10 |
| | 6.0 | | .005 | | | | | | | | | | 11 |
| | 6.5 | | .005 | | | | | | | | | | 12 |
| | 7.0 | org. | .005 | | | | | | | | | | 13 |
| | 7.5 | org. | .005 | | | | | | | | | | 14 |
| | 8.0 | | .005 | | | | | | | | | | 15 |
| | 8.5 | org. | .005 | | | | | | | | | | 16 |
| | 9.0 | | .010 | | | | | | | | | | 17 |
| | 9.5 | | .005 | | | | | | | | | | 18 |
| | 10.0 | org. | .005 | | | | | | | | | | 19 |
| 30E | 12.0N | | .005 | | | | | | | | | | 20 |
| | | | | | | | | | | | | | 21 |
| 32E | 0.5N | | .010 | | | | | | | | | | 22 |
| | 2.0 | org. | .010 | | | | | | | | | | 23 |
| | 2.5 | | .005 | | | | | | | | | | 24 |
| | 3.0 | | .005 | | | | | | | | | | 25 |
| | 3.5 | | .005 | | | | | | | | | | 26 |
| | 4.0 | org. | .005 | | | | | | | | | | 27 |
| | 4.5 | org. | .005 | | | | | | | | | | 28 |
| | 5.0 | | .005 | | | | | | | | | | 29 |
| | 5.5 | org. | .005 | | | | | | | | | | 30 |
| | 6.0 | | .010 | | | | | | | | | | 31 |
| | 6.5 | | .005 | | | | | | | | | | 32 |
| | 7.0 | org. | .005 | | | | | | | | | | 33 |
| | 7.5 | org. | .010 | | | | | | | | | | 34 |
| | 8.0 | org. | .010 | | | | | | | | | | 35 |
| | 8.5 | org. | .005 | | | | | | | | | | 36 |
| | 9.0 | | .005 | | | | | | | | | | 37 |
| | 9.5 | org. | .005 | | | | | | | | | | 38 |
| 32E | 10.0N | | .005 | | | | | | | | | | 39 |
| | | | | | | | | | | | | | 40 |

All reports are the confidential property of clients
All results are in PPM.

DIGESTION:.....

DETERMINATION:.....

DATE SAMPLES RECEIVED Nov. 14, 1979

DATE REPORTS MAILED Nov. 26, 1979

ASSAYER *Dean Toy*

DEAN TOYE, B.Sc.
CHIEF CHEMIST
CERTIFIED B.C. ASSAYER



To: Ashcroft Resources Ltd.,

ACME ANALYTICAL LABORATORIES LTD.

Assaying & Trace Analysis

852 E. Hastings St., Vancouver, B.C. V6A 1R8

phone:253 - 3158

File No. 0671

Type of Samples Soils

Disposition

GEOCHEMICAL ASSAY CERTIFICATE

All sample on this page pulverized.

7

| SAMPLE No. | | Au | | | | | | | | | | | |
|------------|-------|------|------|--|--|--|--|--|--|--|--|--|----|
| 22E | 8.0N | org. | .005 | | | | | | | | | | 1 |
| | 8.5 | org. | .005 | | | | | | | | | | 2 |
| | 9.0 | org. | .005 | | | | | | | | | | 3 |
| | 9.5 | | .005 | | | | | | | | | | 4 |
| 22E | 10.0N | | .005 | | | | | | | | | | 5 |
| | | | | | | | | | | | | | 6 |
| 24E | 0.5N | | .005 | | | | | | | | | | 7 |
| | 1.0 | | .005 | | | | | | | | | | 8 |
| | 1.5 | R.C. | .005 | | | | | | | | | | 9 |
| | 2.0 | | .005 | | | | | | | | | | 10 |
| | 2.5 | | .005 | | | | | | | | | | 11 |
| | 3.0 | | .005 | | | | | | | | | | 12 |
| | 3.5 | | .005 | | | | | | | | | | 13 |
| | 4.0 | | .005 | | | | | | | | | | 14 |
| | 4.5 | org. | .005 | | | | | | | | | | 15 |
| | 5.0 | | .005 | | | | | | | | | | 16 |
| | 5.5 | | .005 | | | | | | | | | | 17 |
| | 6.0 | | .005 | | | | | | | | | | 18 |
| | 6.5 | | .005 | | | | | | | | | | 19 |
| | 7.0 | | .005 | | | | | | | | | | 20 |
| | 7.5 | | .005 | | | | | | | | | | 21 |
| | 8.0 | org. | .005 | | | | | | | | | | 22 |
| | 8.5 | org. | .005 | | | | | | | | | | 23 |
| | 9.0 | org. | .005 | | | | | | | | | | 24 |
| | 9.5 | org. | .005 | | | | | | | | | | 25 |
| 24E | 10.0N | | .005 | | | | | | | | | | 26 |
| | | | | | | | | | | | | | 27 |
| 28E | 0.5 | | .005 | | | | | | | | | | 28 |
| | 1.0 | org. | .020 | | | | | | | | | | 29 |
| | 1.5 | org. | .005 | | | | | | | | | | 30 |
| | 2.0 | | .005 | | | | | | | | | | 31 |
| | 2.5 | org. | .005 | | | | | | | | | | 32 |
| | 3.0 | | .005 | | | | | | | | | | 33 |
| | 3.5 | | .005 | | | | | | | | | | 34 |
| | 4.0 | | .005 | | | | | | | | | | 35 |
| | 4.5 | | .010 | | | | | | | | | | 36 |
| 28E | 5.0N | org. | .020 | | | | | | | | | | 37 |
| | | | | | | | | | | | | | 38 |
| | | | | | | | | | | | | | 39 |
| | | | | | | | | | | | | | 40 |

All reports are the confidential property of clients
All results are in PPM.

DIGESTION:.....

DETERMINATION:.....

DATE SAMPLES RECEIVED Nov. 14, 1979

DATE REPORTS MAILED Nov. 26, 1979

ASSAYER *Dean Toy*

DEAN TOYE, B.Sc.
CHIEF CHEMIST
CERTIFIED B.C. ASSAYER



To: Ashcroft Resources Ltd.,

ACME ANALYTICAL LABORATORIES LTD.

Assaying & Trace Analysis

852 E. Hastings St., Vancouver, B.C. V6A 1R6

phone:253 - 3158

File No. 0671

Type of Samples Soils

Disposition

GEOCHEMICAL ASSAY CERTIFICATE

All sample on this page pulverized.

6

| SAMPLE No. | | Au | | | | | | | | | | | | | | | | | | | |
|------------|-------|------|------|--|--|--|--|--|--|--|--|--|--|--|--|--|--|--|--|--|----|
| ON | 20E | | .005 | | | | | | | | | | | | | | | | | | 1 |
| 20E | 0.5N | org. | .005 | | | | | | | | | | | | | | | | | | 2 |
| | 1.0 | org. | .005 | | | | | | | | | | | | | | | | | | 3 |
| | 1.5 | | .005 | | | | | | | | | | | | | | | | | | 4 |
| | 2.0 | | .020 | | | | | | | | | | | | | | | | | | 5 |
| | 2.5 | | .005 | | | | | | | | | | | | | | | | | | 6 |
| | 3.0 | | .005 | | | | | | | | | | | | | | | | | | 7 |
| | 3.5 | | .005 | | | | | | | | | | | | | | | | | | 8 |
| | 4.0 | | .005 | | | | | | | | | | | | | | | | | | 9 |
| | 4.5 | | .020 | | | | | | | | | | | | | | | | | | 10 |
| | 5.0 | | .005 | | | | | | | | | | | | | | | | | | 11 |
| | 5.5 | | .005 | | | | | | | | | | | | | | | | | | 12 |
| | 6.0 | | .005 | | | | | | | | | | | | | | | | | | 13 |
| | 6.5 | | .005 | | | | | | | | | | | | | | | | | | 14 |
| | 7.0 | | .005 | | | | | | | | | | | | | | | | | | 15 |
| | 7.0 | R.C. | .010 | | | | | | | | | | | | | | | | | | 16 |
| | 7.5 | | .005 | | | | | | | | | | | | | | | | | | 17 |
| | 8.0 | | .005 | | | | | | | | | | | | | | | | | | 18 |
| | 8.5 | | .005 | | | | | | | | | | | | | | | | | | 19 |
| | 9.0 | | .005 | | | | | | | | | | | | | | | | | | 20 |
| | 9.5 | | .010 | | | | | | | | | | | | | | | | | | 21 |
| 20E | 10.0N | | .005 | | | | | | | | | | | | | | | | | | 22 |
| | | | | | | | | | | | | | | | | | | | | | 23 |
| ON | 22E | | .005 | | | | | | | | | | | | | | | | | | 24 |
| 22E | 0.5N | org. | .005 | | | | | | | | | | | | | | | | | | 25 |
| | 1.0 | | .005 | | | | | | | | | | | | | | | | | | 26 |
| | 1.5 | | .005 | | | | | | | | | | | | | | | | | | 27 |
| | 2.0 | org. | .005 | | | | | | | | | | | | | | | | | | 28 |
| | 2.5 | | .005 | | | | | | | | | | | | | | | | | | 29 |
| | 3.0 | | .005 | | | | | | | | | | | | | | | | | | 30 |
| | 3.5 | | .005 | | | | | | | | | | | | | | | | | | 31 |
| | 4.0 | | .005 | | | | | | | | | | | | | | | | | | 32 |
| | 4.5 | | .040 | | | | | | | | | | | | | | | | | | 33 |
| | 5.0 | | .005 | | | | | | | | | | | | | | | | | | 34 |
| | 5.5 | R.C. | .005 | | | | | | | | | | | | | | | | | | 35 |
| | 6.0 | | .005 | | | | | | | | | | | | | | | | | | 36 |
| | 6.5 | | .005 | | | | | | | | | | | | | | | | | | 37 |
| | 7.0 | | .005 | | | | | | | | | | | | | | | | | | 38 |
| 22E | 7.5N | org. | .005 | | | | | | | | | | | | | | | | | | 39 |
| | | | | | | | | | | | | | | | | | | | | | 40 |

All reports are the confidential property of clients
All results are in PPM.

DIGESTION:.....

DETERMINATION:.....

DATE SAMPLES RECEIVED Nov 14, 1979

DATE REPORTS MAILED Nov. 26, 1979

ASSAYER *Dean Toy*

DEAN TOYE, B.Sc.
CHIEF CHEMIST
CERTIFIED B.C. ASSAYER



To: Ashcroft Resources Ltd.

ACME ANALYTICAL LABORATORIES LTD.

Assaying & Trace Analysis

852 E. Hastings St., Vancouver, B. C. V6A 1R6

phone: 253 - 3158

File No. 0671

Type of Samples Soils

Disposition

GEOCHEMICAL ASSAY CERTIFICATE

All sample on this page pulverized.

| SAMPLE No. | | Au | | | | | | | | |
|------------|-------|------|------|--|--|--|--|--|--|----|
| 16E | 2.5N | R.C. | .030 | | | | | | | 1 |
| | 3.0 | R.C. | .010 | | | | | | | 2 |
| | 3.5 | | .020 | | | | | | | 3 |
| | 4.0 | | .010 | | | | | | | 4 |
| | 4.5 | R.C. | .005 | | | | | | | 5 |
| | 5.0 | R.C. | .005 | | | | | | | 6 |
| | 5.5 | | .010 | | | | | | | 7 |
| | 6.0 | | .020 | | | | | | | 8 |
| | 6.5 | | .005 | | | | | | | 9 |
| | 7.0 | | .005 | | | | | | | 10 |
| | 7.5 | | .005 | | | | | | | 11 |
| | 8.0 | | .005 | | | | | | | 12 |
| | 8.5 | | .005 | | | | | | | 13 |
| | 9.0 | | .005 | | | | | | | 14 |
| | 9.5 | | .005 | | | | | | | 15 |
| 16E | 10.0N | | .005 | | | | | | | 16 |
| | | | | | | | | | | 17 |
| QN | 18E | R.C. | .005 | | | | | | | 18 |
| 18E | 0.5N | | .005 | | | | | | | 19 |
| | 1.0 | | .005 | | | | | | | 20 |
| | 1.5 | | .005 | | | | | | | 21 |
| | 2.0 | | .005 | | | | | | | 22 |
| | 2.5 | org. | .005 | | | | | | | 23 |
| | 3.0 | org. | .005 | | | | | | | 24 |
| | 3.5 | | .005 | | | | | | | 25 |
| | 3.5 | R.C. | .005 | | | | | | | 26 |
| | 4.0 | | .005 | | | | | | | 27 |
| | 4.5 | | .005 | | | | | | | 28 |
| | 5.0 | | .010 | | | | | | | 29 |
| | 5.5 | org. | .005 | | | | | | | 30 |
| | 6.0 | | .005 | | | | | | | 31 |
| | 6.5 | org. | .005 | | | | | | | 32 |
| | 7.0 | | .005 | | | | | | | 33 |
| | 7.5 | org. | .005 | | | | | | | 34 |
| | 8.0 | org. | .005 | | | | | | | 35 |
| | 8.5 | org. | .005 | | | | | | | 36 |
| | 9.0 | | .005 | | | | | | | 37 |
| | 9.5 | | .005 | | | | | | | 38 |
| 18E | 10.0N | | .005 | | | | | | | 39 |
| | | | | | | | | | | 40 |

All reports are the confidential property of clients
All results are in PPM.

DIGESTION:.....

DETERMINATION:.....

DATE SAMPLES RECEIVED Nov. 14, 1979

DATE REPORTS MAILED Nov. 26, 1979

ASSAYER *Dean Toye*

DEAN TOYE, B.Sc.
CHIEF CHEMIST
CERTIFIED B.C. ASSAYER



To: Ashcroft Resources Ltd.,

ACME ANALYTICAL LABORATORIES LTD.

Assaying & Trace Analysis

852 E. Hastings St., Vancouver, B. C. V6A 1R6

phone: 253 - 3158

File No. 0671

Type of Samples Soils

Disposition

GEOCHEMICAL ASSAY CERTIFICATE

All sample on this page pulverized.

4

| SAMPLE No. | | Au | | | | | | | | | | | | | | | | |
|------------|-------|------|------|--|--|--|--|--|--|--|--|--|--|--|--|--|--|----|
| 12E | 2.0N | org. | .005 | | | | | | | | | | | | | | | 1 |
| | 2.5 | | .005 | | | | | | | | | | | | | | | 2 |
| | 3.0 | org. | .005 | | | | | | | | | | | | | | | 3 |
| | 3.5 | | .005 | | | | | | | | | | | | | | | 4 |
| | 4.0 | | .005 | | | | | | | | | | | | | | | 5 |
| | 4.5 | | .005 | | | | | | | | | | | | | | | 6 |
| | 5.0 | R.C. | .005 | | | | | | | | | | | | | | | 7 |
| | 5.5 | | .005 | | | | | | | | | | | | | | | 8 |
| | 6.0 | | .005 | | | | | | | | | | | | | | | 9 |
| | 6.5 | R.C. | .005 | | | | | | | | | | | | | | | 10 |
| | 7.0 | org. | .005 | | | | | | | | | | | | | | | 11 |
| | 7.5 | org. | .005 | | | | | | | | | | | | | | | 12 |
| | 8.0 | org. | .005 | | | | | | | | | | | | | | | 13 |
| | 8.5 | org. | .005 | | | | | | | | | | | | | | | 14 |
| | 9.0 | org. | .005 | | | | | | | | | | | | | | | 15 |
| | 9.5 | org. | .005 | | | | | | | | | | | | | | | 16 |
| 12E | 10.0N | org. | .005 | | | | | | | | | | | | | | | 17 |
| | | | | | | | | | | | | | | | | | | 18 |
| ON | 14E | | .005 | | | | | | | | | | | | | | | 19 |
| 14E | 1.0N | org. | .005 | | | | | | | | | | | | | | | 20 |
| | 1.5 | R.C. | .005 | | | | | | | | | | | | | | | 21 |
| | 2.0 | org. | .005 | | | | | | | | | | | | | | | 22 |
| | 2.5 | R.C. | .005 | | | | | | | | | | | | | | | 23 |
| | 3.0 | org. | .005 | | | | | | | | | | | | | | | 24 |
| | 3.5 | org. | .005 | | | | | | | | | | | | | | | 25 |
| | 4.0 | | .005 | | | | | | | | | | | | | | | 26 |
| | 4.5 | org. | .005 | | | | | | | | | | | | | | | 27 |
| | 5.0 | R.C. | .005 | | | | | | | | | | | | | | | 28 |
| | 5.5 | R.C. | .005 | | | | | | | | | | | | | | | 29 |
| | 6.0 | org. | .005 | | | | | | | | | | | | | | | 30 |
| | 6.5 | org. | .005 | | | | | | | | | | | | | | | 31 |
| | 7.0 | org. | .005 | | | | | | | | | | | | | | | 32 |
| | 7.5 | org. | .005 | | | | | | | | | | | | | | | 33 |
| 14E | 8.0N | org. | .005 | | | | | | | | | | | | | | | 34 |
| ON | 16E | | .005 | | | | | | | | | | | | | | | 35 |
| 16E | 0.5N | | .005 | | | | | | | | | | | | | | | 36 |
| | 0.5 | R.C. | .005 | | | | | | | | | | | | | | | 37 |
| | 1.0 | | .005 | | | | | | | | | | | | | | | 38 |
| | 1.5 | org. | .005 | | | | | | | | | | | | | | | 39 |
| 16E | 2.0N | org. | .005 | | | | | | | | | | | | | | | 40 |

All reports are the confidential property of clients
All results are in PPM.

DIGESTION:.....

DETERMINATION:.....

DATE SAMPLES RECEIVED Nov. 14, 1979

DATE REPORTS MAILED Nov. 26, 1979

ASSAYER Dean Toye

DEAN TOYE, B.Sc.
CHIEF CHEMIST
CERTIFIED B.C. ASSAYER



To: Ashcroft Resources Ltd.,

ACME ANALYTICAL LABORATORIES LTD.

Assaying & Trace Analysis

852 E. Hastings St., Vancouver, B. C. V6A 1R6

phone: 253 - 3158

File No. 0671

Type of Samples Soils

Disposition

GEOCHEMICAL ASSAY CERTIFICATE

All sample on this page pulverized.

| SAMPLE No. | | Au | | | | | | | | | | | |
|------------|-------|------|------|--|--|--|--|--|--|--|--|--|----|
| 8E | 5.5N | org. | .005 | | | | | | | | | | 1 |
| | 6.0 | | .005 | | | | | | | | | | 2 |
| | 6.5 | sed. | .005 | | | | | | | | | | 3 |
| | 6.5 | | .005 | | | | | | | | | | 4 |
| | 7.0 | sed. | .010 | | | | | | | | | | 5 |
| | 7.0 | | .005 | | | | | | | | | | 6 |
| | 7.5 | org. | .005 | | | | | | | | | | 7 |
| | 8.0 | org. | .005 | | | | | | | | | | 8 |
| | 8.0 | R.C. | .005 | | | | | | | | | | 9 |
| | 8.5 | R.C. | .020 | | | | | | | | | | 10 |
| | 8.5 | org. | .005 | | | | | | | | | | 11 |
| | 9.0 | R.C. | .005 | | | | | | | | | | 12 |
| | 9.5 | | .020 | | | | | | | | | | 13 |
| 8E | 10.0N | R.C. | .005 | | | | | | | | | | 14 |
| | | | | | | | | | | | | | 15 |
| ON | 10E | | .005 | | | | | | | | | | 16 |
| 10N | 0.5N | org. | .010 | | | | | | | | | | 17 |
| | 1.0 | org. | .010 | | | | | | | | | | 18 |
| | 1.5 | | .005 | | | | | | | | | | 19 |
| | 2.0 | | .010 | | | | | | | | | | 20 |
| | 2.5 | | .005 | | | | | | | | | | 21 |
| | 3.0 | org. | .005 | | | | | | | | | | 22 |
| | 3.5 | R.C. | .010 | | | | | | | | | | 23 |
| | 4.0 | | .005 | | | | | | | | | | 24 |
| | 4.5 | org. | .010 | | | | | | | | | | 25 |
| | 5.0 | | .005 | | | | | | | | | | 26 |
| | 5.5 | | .005 | | | | | | | | | | 27 |
| | 6.0 | | .005 | | | | | | | | | | 28 |
| | 6.5 | | .020 | | | | | | | | | | 29 |
| | 7.0 | | .005 | | | | | | | | | | 30 |
| | 7.5 | | .005 | | | | | | | | | | 31 |
| | 8.0 | | .005 | | | | | | | | | | 32 |
| | 9.0 | R.C. | .005 | | | | | | | | | | 33 |
| | 9.5 | org. | .005 | | | | | | | | | | 34 |
| 10E | 10.0N | | .010 | | | | | | | | | | 35 |
| | | | | | | | | | | | | | 36 |
| ON | 12E | | .005 | | | | | | | | | | 37 |
| 12E | 0.5N | | .010 | | | | | | | | | | 38 |
| | 1.0 | | .005 | | | | | | | | | | 39 |
| 12E | 1.5N | | .005 | | | | | | | | | | 40 |

All reports are the confidential property of clients
All results are in PPM.

DIGESTION:.....

DETERMINATION:.....

DATE SAMPLES RECEIVED Nov. 14, 1979

DATE REPORTS MAILED Nov. 26, 1979

ASSAYER *[Signature]*

DEAN TOYE, B.Sc.
CHIEF CHEMIST
CERTIFIED B.C. ASSAYER



To: Ashcroft Resources Ltd.,

ACME ANALYTICAL LABORATORIES LTD.

Assaying & Trace Analysis

852 E. Hastings St., Vancouver, B. C. V6A 1R6

phone:253 - 3158

File No. 0671

Type of Samples Soils

Disposition

GEOCHEMICAL ASSAY CERTIFICATE

All sample on this page pulverized.

| SAMPLE No. | | Au | | | | | | | | | | | |
|------------|-------|------|------|--|--|--|--|--|--|--|--|--|----|
| 4E | 8.0N | R.C. | .005 | | | | | | | | | | 1 |
| | 8.5 | R.C. | .005 | | | | | | | | | | 2 |
| | 9.0 | | .040 | | | | | | | | | | 3 |
| | 9.5 | R.C. | .005 | | | | | | | | | | 4 |
| 4E | 10.0N | | .005 | | | | | | | | | | 5 |
| | | | | | | | | | | | | | 6 |
| QN | 6.0E | | .005 | | | | | | | | | | 7 |
| 6E | 1.0N | org. | .005 | | | | | | | | | | 8 |
| | 1.5 | | .005 | | | | | | | | | | 9 |
| | 1.5 | R.C. | .005 | | | | | | | | | | 10 |
| | 2.0 | | .005 | | | | | | | | | | 11 |
| | 2.0 | R.C. | .005 | | | | | | | | | | 12 |
| | 2.5 | | .005 | | | | | | | | | | 13 |
| | 3.0 | | .005 | | | | | | | | | | 14 |
| | 3.0 | R.C. | .005 | | | | | | | | | | 15 |
| | 3.5 | R.C. | .005 | | | | | | | | | | 16 |
| | 4.0 | org. | .005 | | | | | | | | | | 17 |
| | 4.5 | | .005 | | | | | | | | | | 18 |
| | 5.0 | R.C. | .005 | | | | | | | | | | 19 |
| | 5.5 | R.C. | .010 | | | | | | | | | | 20 |
| | 6.0 | R.C. | .005 | | | | | | | | | | 21 |
| | 6.5 | | .010 | | | | | | | | | | 22 |
| | 7.0 | | .005 | | | | | | | | | | 23 |
| | 7.5 | org. | .005 | | | | | | | | | | 24 |
| | 8.0 | org. | .010 | | | | | | | | | | 25 |
| | 8.5 | org. | .005 | | | | | | | | | | 26 |
| | 9.0 | | .010 | | | | | | | | | | 27 |
| | 9.5 | R.C. | .005 | | | | | | | | | | 28 |
| 6E | 10.0N | | .005 | | | | | | | | | | 29 |
| | | | | | | | | | | | | | 30 |
| QN | 8.0E | | .005 | | | | | | | | | | 31 |
| 8E | 0.5N | | .005 | | | | | | | | | | 32 |
| | 1.0 | org. | .005 | | | | | | | | | | 33 |
| | 1.5 | org. | .005 | | | | | | | | | | 34 |
| | 2.0 | | .005 | | | | | | | | | | 35 |
| | 2.5 | | .005 | | | | | | | | | | 36 |
| | 3.0 | | .005 | | | | | | | | | | 37 |
| | 4.0 | | .005 | | | | | | | | | | 38 |
| | 4.5 | org. | .005 | | | | | | | | | | 39 |
| 8E | 5.0N | R.C. | .005 | | | | | | | | | | 40 |

All reports are the confidential property of clients
All results are in PPM.

DIGESTION:.....

DETERMINATION:.....

DATE SAMPLES RECEIVED Nov. 14, 1979

DATE REPORTS MAILED Nov. 26, 1979

ASSAYER *Dean Toye*

DEAN TOYE, B.Sc.
CHIEF CHEMIST
CERTIFIED B.C. ASSAYER



To: Ashcroft Resources Ltd.,
728 - 510 W. Hastings St.,
Vancouver, B.C.

ACME ANALYTICAL LABORATORIES LTD.

Assaying & Trace Analysis

852 E. Hastings St., Vancouver, B.C. V6A 1R6

phone: 253 - 3158

File No. 0671

Type of Samples Soils

Disposition _____

GEOCHEMICAL ASSAY CERTIFICATE

All sample on this page pulverized.

| SAMPLE No. | | | Au | | | | | | | | | | |
|------------|-------|------|------|--|--|--|--|--|--|--|--|--|----|
| ON | 0E | | .005 | | | | | | | | | | 1 |
| ON | 2E | R.C. | .005 | | | | | | | | | | 2 |
| 2E | 0.5N | org. | .005 | | | | | | | | | | 3 |
| | 1.0 | | .005 | | | | | | | | | | 4 |
| | 1.5 | org. | .010 | | | | | | | | | | 5 |
| | 2.0 | org. | .005 | | | | | | | | | | 6 |
| | 2.5 | | .010 | | | | | | | | | | 7 |
| | 3.0 | | .005 | | | | | | | | | | 8 |
| | 3.5 | | .005 | | | | | | | | | | 9 |
| | 4.0 | | .010 | | | | | | | | | | 10 |
| | 4.5 | | .005 | | | | | | | | | | 11 |
| | 5.0 | | .005 | | | | | | | | | | 12 |
| | 5.5 | | .010 | | | | | | | | | | 13 |
| | 6.0 | | .005 | | | | | | | | | | 14 |
| | 6.5 | | .005 | | | | | | | | | | 15 |
| | 7.0 | | .005 | | | | | | | | | | 16 |
| | 7.5 | | .010 | | | | | | | | | | 17 |
| | 8.0 | | .005 | | | | | | | | | | 18 |
| | 9.0 | | .005 | | | | | | | | | | 19 |
| | 9.5 | | .005 | | | | | | | | | | 20 |
| 2E | 10.0N | | .005 | | | | | | | | | | 21 |
| | | | | | | | | | | | | | 22 |
| ON | 4E | sed. | .010 | | | | | | | | | | 23 |
| 4E | 0 N | org. | .005 | | | | | | | | | | 24 |
| | 0.5 | org. | .005 | | | | | | | | | | 25 |
| | 1.0 | | .005 | | | | | | | | | | 26 |
| | 1.5 | | .005 | | | | | | | | | | 27 |
| | 2.0 | | .005 | | | | | | | | | | 28 |
| | 2.5 | | .005 | | | | | | | | | | 29 |
| | 3.0 | org. | .005 | | | | | | | | | | 30 |
| | 3.5 | org. | .005 | | | | | | | | | | 31 |
| | 4.0 | | .005 | | | | | | | | | | 32 |
| | 4.5 | | .005 | | | | | | | | | | 33 |
| | 5.0 | | .005 | | | | | | | | | | 34 |
| | 5.5 | | .010 | | | | | | | | | | 35 |
| | 6.0 | | .005 | | | | | | | | | | 36 |
| | 6.5 | | .005 | | | | | | | | | | 37 |
| | 7.0 | R.C. | .010 | | | | | | | | | | 38 |
| 4E | 7.5N | | .005 | | | | | | | | | | 39 |
| | | | | | | | | | | | | | 40 |

All reports are the confidential property of clients
All results are in PPM.

GESTION:.....

DETERMINATION:.....

DATE SAMPLES RECEIVED Nov. 14, 1979

DATE REPORTS MAILED Nov. 26, 1979

ASSAYER Dean Toy

DEAN TOYE, B.Sc.
CHIEF CHEMIST
CERTIFIED B.C. ASSAYER



ACME ANALYTICAL LABORATORIES LTD.

Assaying & Trace Analysis

852 E. Hastings St., Vancouver, B. C. V6A 1R6

phone: 253 - 3158

To: Ashcroft Resources Ltd.,
728 - 510 W. Hastings St.,
Vancouver, B.C.
V6B 1L8

File No. 0715

Type of Samples

Disposition

GEOCHEMICAL ASSAY CERTIFICATE

* Gold Mineral Claim *

1

| SAMPLE No. | | Au | | | | | | | | | | | | |
|------------|---|-----------|--|--|--|--|---|--|--|--|--|--|--|----|
| ON 0 | E | .005 | | | | | | | | | | | | 1 |
| 0.5 | | org. .005 | | | | | | | | | | | | 2 |
| 1 | | .005 | | | | | | | | | | | | 3 |
| 1.5 | | .005 | | | | | | | | | | | | 4 |
| 2 | | .005 | | | | | | | | | | | | 5 |
| 2.5 | | .005 | | | | | | | | | | | | 6 |
| 3 | | .005 | | | | | | | | | | | | 7 |
| 3.5 | | sed. .005 | | | | | | | | | | | | 8 |
| 4 | | org. .005 | | | | | P | | | | | | | 9 |
| 4.5 | | .005 | | | | | | | | | | | | 10 |
| 5 | | .005 | | | | | P | | | | | | | 11 |
| 5.5 | | .005 | | | | | | | | | | | | 12 |
| 6 | | sed. .005 | | | | | | | | | | | | 13 |
| 6.5 | | sed. .005 | | | | | | | | | | | | 14 |
| 7 | | .005 | | | | | | | | | | | | 15 |
| 7.5 | | N.S. | | | | | | | | | | | | 16 |
| 8 | | .005 | | | | | | | | | | | | 17 |
| 8.5 | | R.C. .005 | | | | | | | | | | | | 18 |
| 9 | | .010 | | | | | | | | | | | | 19 |
| 9.5 | | .005 | | | | | | | | | | | | 20 |
| ON 10 | E | sed. .005 | | | | | | | | | | | | 21 |
| | | | | | | | | | | | | | | 22 |
| 2N 0.5 | E | .005 | | | | | | | | | | | | 23 |
| 1 | | .005 | | | | | | | | | | | | 24 |
| 1.5 | | .005 | | | | | | | | | | | | 25 |
| 2 | | .005 | | | | | | | | | | | | 26 |
| 2.5 | | .005 | | | | | | | | | | | | 27 |
| 3 | | .005 | | | | | | | | | | | | 28 |
| 3.5 | | .005 | | | | | | | | | | | | 29 |
| 4 | | sed. .005 | | | | | | | | | | | | 30 |
| 4.5 | | .005 | | | | | | | | | | | | 31 |
| 5 | | org. .005 | | | | | | | | | | | | 32 |
| 5.5 | | .005 | | | | | | | | | | | | 33 |
| 6 | | sed. .010 | | | | | | | | | | | | 34 |
| 6.5 | | sed. .005 | | | | | | | | | | | | 35 |
| 7 | | .005 | | | | | | | | | | | | 36 |
| 7.5 | | .005 | | | | | | | | | | | | 37 |
| 2N 8 | E | .005 | | | | | | | | | | | | 38 |
| | | | | | | | | | | | | | | 39 |
| | | | | | | | | | | | | | | 40 |

All reports are the confidential property of clients
All results are in PPM.

DIGESTION:.....

DETERMINATION:.....

* P for pulverizing

DATE SAMPLES RECEIVED Dec. 11, 1979

DATE REPORTS MAILED Dec. 19, 1979

ASSAYER

DEAN TOYE, B.Sc.
CHIEF CHEMIST
CERTIFIED B.C. ASSAYER



ACME ANALYTICAL LABORATORIES LTD.

Assaying & Trace Analysis

852 E. Hastings St., Vancouver, B. C. V6A 1R6

phone:253 - 3158

To: Ashcroft Resources Ltd.

File No. 0715

Type of Samples

GEOCHEMICAL ASSAY CERTIFICATE

Disposition

* Gold Mineral Claim *

| SAMPLE No. | | Au | | | | | | | | | | | |
|------------|------|------|-----------|--|--|--|--|--|--|--|--|--|----|
| 2N | 8.5 | E | .005 | | | | | | | | | | 1 |
| | 9 | | .005 | | | | | | | | | | 2 |
| | 9.5 | | .005 | | | | | | | | | | 3 |
| 2N | 10 | E | .005 | | | | | | | | | | 4 |
| | | | | | | | | | | | | | 5 |
| 8N | 0 | E | .005 | | | | | | | | | | 6 |
| | 0.5 | | .005 | | | | | | | | | | 7 |
| | 1 | | .005 | | | | | | | | | | 8 |
| | 1.5 | | .005 | | | | | | | | | | 9 |
| | 2 | | .010* | | | | | | | | | | 10 |
| | 2.5 | | .005 | | | | | | | | | | 11 |
| | 3 | | .020* | | | | | | | | | | 12 |
| | 3.5 | | .005 | | | | | | | | | | 13 |
| | 4 | | .005 | | | | | | | | | | 14 |
| | 4.5 | | .005 | | | | | | | | | | 15 |
| | 5 | | .005 | | | | | | | | | | 16 |
| | 5.5 | org. | .005 | | | | | | | | | | 17 |
| | 6 | | .005 | | | | | | | | | | 18 |
| | 6.5 | | .005 | | | | | | | | | | 19 |
| | 7 | org. | .005 | | | | | | | | | | 20 |
| | 7.5 | | .005 | | | | | | | | | | 21 |
| | 8 | | .005 | | | | | | | | | | 22 |
| | 8.5 | org. | .005 | | | | | | | | | | 23 |
| | 9 | org. | .005 | | | | | | | | | | 24 |
| | 9.5 | org. | .005 | | | | | | | | | | 25 |
| | 10 | org. | .005 | | | | | | | | | | 26 |
| | 10.5 | org. | .005 | | | | | | | | | | 27 |
| | 11 | org. | .005 | | | | | | | | | | 28 |
| | 11.5 | org. | .020* | | | | | | | | | | 29 |
| | 12 | org. | .005 | | | | | | | | | | 30 |
| | 12.5 | org. | .005 | | | | | | | | | | 31 |
| | 13 | | .010* | | | | | | | | | | 32 |
| | 13.5 | | .005 | | | | | | | | | | 33 |
| | 14 | | .005 | | | | | | | | | | 34 |
| | 14.5 | | .005 | | | | | | | | | | 35 |
| 8N | 15 | E | org. .005 | | | | | | | | | | 36 |
| | | | | | | | | | | | | | 37 |
| | | | | | | | | | | | | | 38 |
| | | | | | | | | | | | | | 39 |
| | | | | | | | | | | | | | 40 |

All reports are the confidential property of clients
All results are in PPM.

STION:.....
L. ERMINATION:.....

DATE SAMPLES RECEIVED Dec. 11, 1979

DATE REPORTS MAILED Dec. 19, 1979

ASSAYER *[Signature]*

DEAN TOYE, B.Sc.
CHIEF CHEMIST
CERTIFIED B.C. ASSAYER



To: Ashcroft Resources Ltd.

ACME ANALYTICAL LABORATORIES LTD.

Assaying & Trace Analysis

852 E. Hastings St., Vancouver, B. C. V6A 1R6

phone: 253 - 3158

File No. 0715

Type of Samples

Disposition

GEOCHEMICAL ASSAY CERTIFICATE

* Gold Mineral Claim *

3

| SAMPLE No. | | Au | | | | | | | | |
|------------|------|------|------|--|---|--|--|--|--|----|
| 10N | 0 E | R.C. | .005 | | | | | | | 1 |
| | 0.5 | | .005 | | | | | | | 2 |
| | 1 | | .005 | | | | | | | 3 |
| | 1.5 | | .005 | | | | | | | 4 |
| | 2 | | .005 | | | | | | | 5 |
| | 2.5 | org. | .005 | | | | | | | 6 |
| | 3 | | .005 | | | | | | | 7 |
| | 3.5 | | .005 | | | | | | | 8 |
| | 4 | | .005 | | | | | | | 9 |
| | 4.5 | | .005 | | | | | | | 10 |
| | 5 | | .005 | | | | | | | 11 |
| | 5.5 | org. | .005 | | | | | | | 12 |
| | 6 | | .005 | | | | | | | 13 |
| | 6.5 | org. | .005 | | P | | | | | 14 |
| | 7 | org. | .005 | | | | | | | 15 |
| | 7.5 | sed. | .005 | | | | | | | 16 |
| | 8 | | .005 | | | | | | | 17 |
| | 8.5 | org. | .005 | | | | | | | 18 |
| | 9 | org. | .005 | | | | | | | 19 |
| | 9.5 | org. | .005 | | | | | | | 20 |
| | 10 | org. | .005 | | | | | | | 21 |
| | 10.5 | org. | .005 | | | | | | | 22 |
| | 11 | org. | .005 | | | | | | | 23 |
| | 11.5 | | .005 | | | | | | | 24 |
| | 12 | | .005 | | | | | | | 25 |
| | 12.5 | org. | .005 | | | | | | | 26 |
| | 13 | org. | .005 | | | | | | | 27 |
| | 13.5 | org. | .005 | | | | | | | 28 |
| | 14 | org. | .010 | | | | | | | 29 |
| | 14.5 | | .020 | | | | | | | 30 |
| 10N | 15 E | | .005 | | | | | | | 31 |
| | | | | | | | | | | 32 |
| 12N | 0 E | | .010 | | | | | | | 33 |
| | 0.5 | | .010 | | | | | | | 34 |
| | 1 | | .005 | | | | | | | 35 |
| | 1.5 | org. | .005 | | | | | | | 36 |
| 12N | 2 E | org. | .005 | | | | | | | 37 |
| | | | | | | | | | | 38 |
| | | | | | | | | | | 39 |
| | | | | | | | | | | 40 |

All reports are the confidential property of clients
All results are in PPM.

DIGESTION:.....

DETERMINATION:.....

*P for pulverizing

DATE SAMPLES RECEIVED Dec. 11, 1979

DATE REPORTS MAILED Dec. 19, 1979

ASSAYER Dean Toye

DEAN TOYE, B.Sc.
CHIEF CHEMIST
CERTIFIED B.C. ASSAYER



To: Ashcroft Resources Ltd.

ACME ANALYTICAL LABORATORIES LTD.

Assaying & Trace Analysis

852 E. Hastings St., Vancouver, B. C. V6A 1R6

phone:253 - 3158

File No. 0715

Type of Samples

Disposition

GEOCHEMICAL ASSAY CERTIFICATE

* Gold Mineral Claim *

4

| SAMPLE No. | | Au | | | | | | | | | | | |
|------------|------|------|--|--|--|---|--|--|--|--|--|--|----|
| 12N 2.5 E | org. | .005 | | | | | | | | | | | 1 |
| 3 | org. | .005 | | | | | | | | | | | 2 |
| 3.5 | org. | .005 | | | | P | | | | | | | 3 |
| 4 | | .005 | | | | | | | | | | | 4 |
| 4.5 | | .005 | | | | | | | | | | | 5 |
| 5 | | .005 | | | | | | | | | | | 6 |
| 5.5 | | .005 | | | | | | | | | | | 7 |
| 6 | | .010 | | | | | | | | | | | 8 |
| 6.5 | | .010 | | | | | | | | | | | 9 |
| 7 | | .005 | | | | | | | | | | | 10 |
| 7.5 | org. | .005 | | | | | | | | | | | 11 |
| 8 | | .005 | | | | P | | | | | | | 12 |
| 8.5 | org. | .005 | | | | P | | | | | | | 13 |
| 9 | | .005 | | | | P | | | | | | | 14 |
| 9.5 | | .005 | | | | | | | | | | | 15 |
| 10 | org. | .005 | | | | P | | | | | | | 16 |
| 10.5 | org. | .005 | | | | P | | | | | | | 17 |
| 11 | | .005 | | | | P | | | | | | | 18 |
| 11.5 | | .005 | | | | P | | | | | | | 19 |
| 12 | | .005 | | | | | | | | | | | 20 |
| 12.5 | | .020 | | | | P | | | | | | | 21 |
| 13 | | .005 | | | | P | | | | | | | 22 |
| 13.5 | | .010 | | | | | | | | | | | 23 |
| 14 | | .005 | | | | P | | | | | | | 24 |
| 14.5 | org. | .005 | | | | P | | | | | | | 25 |
| 12N 15 E | | .005 | | | | P | | | | | | | 26 |
| 14N 0 E | | .005 | | | | P | | | | | | | 27 |
| 0.5 | | .005 | | | | P | | | | | | | 28 |
| 1 | org. | .005 | | | | P | | | | | | | 29 |
| 1.5 | org. | .005 | | | | P | | | | | | | 30 |
| 2 | | .005 | | | | P | | | | | | | 31 |
| 2.5 | | .005 | | | | P | | | | | | | 32 |
| 3 | | .005 | | | | P | | | | | | | 33 |
| 3.5 | | .005 | | | | P | | | | | | | 34 |
| 4 | | .005 | | | | P | | | | | | | 35 |
| 4.5 | | .005 | | | | P | | | | | | | 36 |
| 14N 5 E | | .005 | | | | P | | | | | | | 37 |
| | | | | | | | | | | | | | 38 |
| | | | | | | | | | | | | | 39 |
| | | | | | | | | | | | | | 40 |

All reports are the confidential property of clients
All results are in PPM.

DIGESTION:.....

DETERMINATION:.....

* P for pulverizing

DATE SAMPLES RECEIVED Dec. 11, 1979

DATE REPORTS MAILED Dec. 19, 1979

ASSAYER

DEAN TOYE, B.Sc.
CHIEF CHEMIST
CERTIFIED B.C. ASSAYER



To: Ashcroft Resources Ltd.

ACME ANALYTICAL LABORATORIES LTD.

Assaying & Trace Analysis

852 E. Hastings St., Vancouver, B. C. V6A 1R6

phone: 253 - 3158

0715

File No. _____

Type of Samples _____

Disposition _____

GEOCHEMICAL ASSAY CERTIFICATE

| SAMPLE No. | | Au | | | | | | | | |
|------------|-----------|-----------|--|--|--|--|--|--|--|----|
| 14N | 5.5 E | .005 | | | | | | | | 1 |
| | 6 R.C. | .005 | | | | | | | | 2 |
| | 6.5 | .005 | | | | | | | | 3 |
| | 7 | .005 | | | | | | | | 4 |
| | 7.5 org. | .005 | | | | | | | | 5 |
| | 8 org. | .005 | | | | | | | | 6 |
| | 8.5 | .005 | | | | | | | | 7 |
| | 9 | .005 | | | | | | | | 8 |
| | 9.5 | .010 * | | | | | | | | 9 |
| | 10 | .005 | | | | | | | | 10 |
| | 10.5 org. | .005 | | | | | | | | 11 |
| | 11 | .005 | | | | | | | | 12 |
| | 11.5 | .005 | | | | | | | | 13 |
| | 12 org. | .005 | | | | | | | | 14 |
| | 12.5 org. | .005 | | | | | | | | 15 |
| | 13 org. | .005 | | | | | | | | 16 |
| | 13.5 | .005 | | | | | | | | 17 |
| | 14 | .010 * | | | | | | | | 18 |
| | 14.5 | .005 | | | | | | | | 19 |
| 14N | 15 E | .005 | | | | | | | | 20 |
| | | | | | | | | | | 21 |
| 14N | 0(A)E | org. .005 | | | | | | | | 22 |
| 16N | 0 E | .005 | | | | | | | | 23 |
| 18N | 0 E | org. .005 | | | | | | | | 24 |
| 20N | 0 E | .005 | | | | | | | | 25 |
| | | | | | | | | | | 26 |
| | 0.5 N | org. .005 | | | | | | | | 27 |
| | 1 | org. .005 | | | | | | | | 28 |
| | 1.5 | .005 | | | | | | | | 29 |
| | 2 | sed. .005 | | | | | | | | 30 |
| | 2.5 | org. .005 | | | | | | | | 31 |
| | 3 | org. .005 | | | | | | | | 32 |
| | 3.5 | .005 | | | | | | | | 33 |
| | 4 | .010 * | | | | | | | | 34 |
| | 4.5 | .005 | | | | | | | | 35 |
| | 5 | .005 | | | | | | | | 36 |
| | 5.5 | org. .005 | | | | | | | | 37 |
| | 6 N | org. .005 | | | | | | | | 38 |
| | | | | | | | | | | 39 |
| | | | | | | | | | | 40 |

All reports are the confidential property of clients
All results are in PPM.

DIGESTION:.....

DETERMINATION:.....

* P for pulverizing

DATE SAMPLES RECEIVED Dec. 11, 1979

DATE REPORTS MAILED Dec. 19, 1979

ASSAYER Dean Toy

DEAN TOYE, B.Sc.
CHIEF CHEMIST
CERTIFIED B.C. ASSAYER



To: Ashcroft Resources Ltd.

ACME ANALYTICAL LABORATORIES LTD.

Assaying & Trace Analysis

852 E. Hastings St., Vancouver, B. C. V6A 1R6

phone:253 - 3158

File No. 0715

Type of Samples

Disposition

GEOCHEMICAL ASSAY CERTIFICATE

| SAMPLE No. | | Au | | | | | | | | | |
|------------|------|-----------|--|--|--|--|--|--|--|--|----|
| 6.5 | N | .005 | | | | | | | | | 1 |
| 7 | | .010* | | | | | | | | | 2 |
| 7.5 | | .005 | | | | | | | | | 3 |
| 8 | org. | .005 | | | | | | | | | 4 |
| 8.5 | org. | .005 | | | | | | | | | 5 |
| 9 | org. | .005 | | | | | | | | | 6 |
| 9.5 | org. | .005 | | | | | | | | | 7 |
| 10 | org. | .005 | | | | | | | | | 8 |
| 10.5 | | .010* | | | | | | | | | 9 |
| 11 | | .005 | | | | | | | | | 10 |
| 11.5 | N | org. .005 | | | | | | | | | 11 |
| | | | | | | | | | | | 12 |
| LIK 0.5 | W | org. .005 | | | | | | | | | 13 |
| 1 | | org. .005 | | | | | | | | | 14 |
| 1.5 | | org. .005 | | | | | | | | | 15 |
| 2 | | org. .005 | | | | | | | | | 16 |
| 2.5 | | org. .005 | | | | | | | | | 17 |
| 3 | | org. .005 | | | | | | | | | 18 |
| 3.5 | | org. .005 | | | | | | | | | 19 |
| 4 | | .010* | | | | | | | | | 20 |
| 4.5 | sed. | .005 | | | | | | | | | 21 |
| 5 | | .005 | | | | | | | | | 22 |
| 5.5 | org. | .005 | | | | | | | | | 23 |
| 6 | | org. .005 | | | | | | | | | 24 |
| 6.5 | | org. .005 | | | | | | | | | 25 |
| LIK 7 | W | .005 | | | | | | | | | 26 |
| | | | | | | | | | | | 27 |
| | | | | | | | | | | | 28 |
| | | | | | | | | | | | 29 |
| | | | | | | | | | | | 30 |
| | | | | | | | | | | | 31 |
| | | | | | | | | | | | 32 |
| | | | | | | | | | | | 33 |
| | | | | | | | | | | | 34 |
| | | | | | | | | | | | 35 |
| | | | | | | | | | | | 36 |
| | | | | | | | | | | | 37 |
| | | | | | | | | | | | 38 |
| | | | | | | | | | | | 39 |
| | | | | | | | | | | | 40 |

All reports are the confidential property of clients
All results are in PPM.

DIGESTION:.....

DETERMINATION:.....

* P for pulverizing

DATE SAMPLES RECEIVED Dec. 11, 1979

DATE REPORTS MAILED Dec. 19, 1979

ASSAYER *Dean Toye*

DEAN TOYE, B.Sc.
CHIEF CHEMIST
CERTIFIED B.C. ASSAYER

APPENDIX B

MIN-EN LAB

ASSAY CERTIFICATES

WITH ANALYSIS PROCEDURES

MIN-EN Laboratories Ltd.

Specialists in Mineral Environments

Corner 15th Street and Bewicke

705 WEST 15th STREET

NORTH VANCOUVER, B.C.

CANADA

ANALYTICAL PROCEDURE REPORTS FOR ASSESSMENT WORK

PROCEDURES FOR Mo, Cu, Cd, Pb, Mn, Ni, Ag, Zn, As, F

Samples are processed by Min-En Laboratories Ltd., at 705 W. 15th St., North Vancouver Laboratory employing the following procedures.

After drying the samples at 95°C soil and stream sediment samples are screened by 80 mesh sieve to obtain the minus 80 mesh fraction for analysis. The rock samples are crushed by a jaw crusher and pulverized by ceramic plated pulverizer.

1.0 gram of the samples are digested for 6 hours with HNO_3 and HClO_4 mixture.

After cooling samples are diluted to standard volume. The solutions are analyzed by Atomic Absorption Spectrophotometers.

Copper, Lead, Zinc, Silver, Cadmium, Cobalt, Nickel and Manganese are analysed using the CH_2H_2 -Air flame combination but the Molybdenum determination is carried out by C_2H_2 - N_2O gas mixture directly or indirectly (depending on the sensitivity and detection limit required) on these sample solutions.

For Arsenic analysis a suitable aliquote is taken from the above 1 gram sample solution and the test is carried out by Gutzit method using $\text{Ag CS}_2\text{N} (\text{C}_2\text{H}_5)_2$ as a reagent. The detection limit obtained is 1.2 ppm.

Fluorine analysis is carried out on a 200 milligram sample. After fusion and suitable dilutions the fluoride ion concentration in rocks or soil samples are measured quantitatively by using fluorine specific ion electrode. Detection limit of this test is 10 ppm F.

MIN-EN Laboratories Ltd.

Specialists in Mineral Environments

Corner 15th Street and Bewicke

705 WEST 15th STREET

NORTH VANCOUVER, B.C.

CANADA

ANALYTICAL PROCEDURE REPORTS FOR ASSESSMENT WORK

PROCEDURE FOR GOLD GEOCHEMICAL ANALYSIS.

Geochemical samples for Gold processed by Min-En Laboratories Ltd., at 705 W. 15th St., North Vancouver Laboratory employing the following procedures.

After drying the samples at 95°C soil and stream sediment samples are screened by 80 mesh sieve to obtain the minus 80 mesh fraction for analysis. The rock samples are crushed and pulverized by ceramic plated pulverizer.

A suitable sample weight 5.0 or 10.0 grams are pre-treated with HNO_3 and HClO_4 mixture.

After pretreatments the samples are digested with Aqua Regia solution, and after digestion the samples are taken up with 25% HCl to suitable volume.

At this stage of the procedure copper, silver and zinc can be analysed from suitable aliquote by Atomic Absorption Spectrophotometric procedure.

Further oxidation and treatment of at least 75% of the original sample solutions are made suitable for extraction of gold with Methyl Iso-Butyl Ketone.

With a set of suitable standard solution gold is analysed by Atomic Absorption instruments. The obtained detection limit is 5 ppb.

MERCURY ANALYTICAL PROCEDURE FOR ASSESSMENT FILING

1.000 gram sample digested with Nitric and Sulphuric Acid. Than further oxidized with 30% H_2O_2 while heating and repeating the oxidizing steps.

After cooling and diluting to suitable volume the solution to refine the oxidation procedure 5% $KMnO_4$ is added in the titrating manner until pink color is obtained.

Mercury is realized by reducing solution into the Flameless Atomic Absorption Chamber and measured in comparing samples with known standards.

MIN-EN Laboratories Ltd.

705 WEST 15th STREET,
NORTH VANCOUVER, B.C., CANADA V7M 1T2
TELEPHONE (604) 980-5814

ANALYTICAL REPORT

Project Date of report **Dec. 18/79**

File No. **9-887** Date samples received **Dec. 10/79**

Samples submitted by:

Company: **Ashcroft Resources**

Report on: **8 soil** Geochem samples

Assay samples

Copies sent to:

1. **Roy Roberts, c/o Guardian Estates, Vancouver, B.C.**

2.

3.

Samples: Sieved to mesh **-80** Ground to mesh **-100**

Prepared samples stored discarded

rejects stored discarded

Methods of analysis: **Hg: Acid digestion, Flameless A.A. Analysis.**

As: Acid Digestion, Spectrophotometric Analysis.

Remarks: **Au: Aqua Regia Digestion, A.A. Analysis.**

SPECIALISTS IN MINERAL ENVIRONMENTS

COMPACT

Ashcroft Resources Ltd.

GEOCHEMICAL ANALYSIS DATA SHEET

File No. 9-887

PROJECT No.:

MIN-EN Laboratories Ltd.

705 WEST 15th ST., NORTH VANCOUVER, B.C. V7M 1T2
PHONE (604) 980-5814

DATE: Dec. 18

1979

ATTENTION:

| Sample Number | Mo ppm | Cu ppm | Pb ppm | Zn ppm | Ni ppm | Co ppm | Ag ppm | Fe ppm | Hg ppb | As ppm | Mn ppm | Au ppb | 70 | 75 | 80 | |
|---------------|--------|--------|--------|--------|--------|--------|--------|--------|--------|--------|--------|--------|-----|-----|-----|-----|
| 81 | 86 | 90 | 95 | 100 | 105 | 110 | 115 | 120 | 125 | 130 | 135 | 140 | 145 | 150 | 155 | 160 |
| B-1 | | | | | | | • | | 240 | 6 | | 5 | | | | |
| 2 | | | | | | | • | | 260 | 19 | | 5 | | | | |
| 3 | | | | | | | • | | 165 | 2 | | 5 | | | | |
| 4 | | | | | | | • | | 840 | 3 | | 19 | | | | |
| 5 | | | | | | | • | | 280 | 4 | | 15 | | | | |
| 6 | | | | | | | • | | 570 | 5 | | 10 | | | | |
| 7 | | | | | | | • | | 270 | <1 | | 15 | | | | |
| B-8 | | | | | | | • | | 210 | 9 | | 20 | | | | |
| | | | | | | | • | | | | | | | | | |
| | | | | | | | • | | | | | | | | | |
| | | | | | | | • | | | | | | | | | |
| | | | | | | | • | | | | | | | | | |
| | | | | | | | • | | | | | | | | | |
| | | | | | | | • | | | | | | | | | |
| | | | | | | | • | | | | | | | | | |
| | | | | | | | • | | | | | | | | | |
| | | | | | | | • | | | | | | | | | |
| | | | | | | | • | | | | | | | | | |
| | | | | | | | • | | | | | | | | | |
| | | | | | | | • | | | | | | | | | |
| | | | | | | | • | | | | | | | | | |
| | | | | | | | • | | | | | | | | | |
| | | | | | | | • | | | | | | | | | |
| | | | | | | | • | | | | | | | | | |
| | | | | | | | • | | | | | | | | | |
| | | | | | | | • | | | | | | | | | |
| | | | | | | | • | | | | | | | | | |
| | | | | | | | • | | | | | | | | | |
| | | | | | | | • | | | | | | | | | |
| | | | | | | | • | | | | | | | | | |
| | | | | | | | • | | | | | | | | | |
| | | | | | | | • | | | | | | | | | |
| | | | | | | | • | | | | | | | | | |
| | | | | | | | • | | | | | | | | | |
| | | | | | | | • | | | | | | | | | |
| | | | | | | | • | | | | | | | | | |
| | | | | | | | • | | | | | | | | | |
| | | | | | | | • | | | | | | | | | |
| | | | | | | | • | | | | | | | | | |
| | | | | | | | • | | | | | | | | | |
| | | | | | | | • | | | | | | | | | |
| | | | | | | | • | | | | | | | | | |
| | | | | | | | • | | | | | | | | | |
| | | | | | | | • | | | | | | | | | |
| | | | | | | | • | | | | | | | | | |
| | | | | | | | • | | | | | | | | | |
| | | | | | | | • | | | | | | | | | |
| | | | | | | | • | | | | | | | | | |
| | | | | | | | • | | | | | | | | | |
| | | | | | | | • | | | | | | | | | |
| | | | | | | | • | | | | | | | | | |
| | | | | | | | • | | | | | | | | | |
| | | | | | | | • | | | | | | | | | |
| | | | | | | | • | | | | | | | | | |
| | | | | | | | • | | | | | | | | | |
| | | | | | | | • | | | | | | | | | |
| | | | | | | | • | | | | | | | | | |
| | | | | | | | • | | | | | | | | | |
| | | | | | | | • | | | | | | | | | |
| | | | | | | | • | | | | | | | | | |
| | | | | | | | • | | | | | | | | | |
| | | | | | | | • | | | | | | | | | |
| | | | | | | | • | | | | | | | | | |
| | | | | | | | • | | | | | | | | | |

Handwritten signature/initials

CERTIFIED BY

APPENDIX C

GENERAL TESTING LABS

ASSAY CERTIFICATES



GENERAL TESTING LABORATORIES

DIVISION SUPERINTENDENCE COMPANY (CANADA) LTD.

1001 EAST PENDER ST., VANCOUVER, B.C., CANADA, V6A 1W2
 PHONE (604) 254-1647 TELEX 04-507514 CABLE SUPERVISE

TO: **BURLINGTON GOLD MINES LTD.**
 1012 - 470 Granville Street
 Vancouver, B.C.

Attn: Mr. A.F. Roberts

CERTIFICATE OF ASSAY

No.: **7902-0950** DATE: **Feb. 16/79**

We hereby certify that the following are the results of assays on: **geochem samples**

| MARKED | GOLD | XXXXX | Arsenic | Mercury | XXX | XXX | XXX | XXX |
|----------------|-------------|------------------|-------------|------------|---|-----|-----|-----|
| | Au (ppm) | | As (ppm) | Hg (ppm) | | | | |
| B-11182 | | | | | | | | |
| B - 1 | 0.14 | | 1500 | 8.0 | <i>Location</i> L.P. for side, Pen, Cdd, Goldu ✓ mine Lane quarry - granite mine + Golden 2M ✓ Golden 1M ✓ Side 2 E + 200' | | | |
| B - 2 | 0.27 | | 75 | 0.4 | | | | |
| B - 3 | 0.07 | | 65 | 1.1 | | | | |
| B - 4 | 0.04 | | 93 | 1.6 | | | | |
| B - 5 | 0.03 | | 700 | 5.0 | | | | |

NOTE: REJECTS RETAINED ONE MONTH. PULPS RETAINED THREE MONTHS. ON REQUEST PULPS AND REJECTS WILL BE STORED FOR A MAXIMUM OF ONE YEAR.

ALL REPORTS ARE THE CONFIDENTIAL PROPERTY OF CLIENTS. PUBLICATION OF STATEMENTS, CONCLUSIONS OR EXTRACTS FROM OR REGARDING OUR REPORTS IS NOT PERMITTED WITHOUT OUR WRITTEN APPROVAL. ANY LIABILITY ATTACHED THERETO IS LIMITED TO THE FEE CHARGED.

R. Nadreau
R. NADREAU, Chemist
 PROVINCIAL ASSAYER

COPY

Analytical and Consulting Chemists, Bulk Cargo Specialists, Surveyors, Inspectors, Samplers, Weighers

MEMBER American Society For Testing Materials • The American Oil Chemists' Society • Canadian Testing Association
 REFEREE AND OR OFFICIAL CHEMISTS FOR National Institute Of Oilseed Products • The American Oil Chemists' Society
 OFFICIAL WEIGHMASTERS FOR Vancouver Board Of Trade

APPENDIX D

STATEMENT OF COSTS

STATEMENT OF COSTS

| | |
|----------------------------|----------------------------|
| Sample Collection: | |
| Team Mineral Services Inc. | \$ 17,000.00 |
| Assaying, Acme Labs. | 4,551.30 |
| Min-EM Labs | 88.00 |
| Report | <u>2,500.55</u> |
| TOTAL | <u><u>\$ 24,139.85</u></u> |

Team Mineral Services Inc.
1274-56th Street,
Delta, B. C.
October 15, 1979

IN ACCOUNT WITH: ASHCROFT RESOURCES LTD.
728-510 W. Hastings, Vancouver, B. C.

STATEMENT OF OPERATING COST, GRAHAM ISLAND CONTRACT.
October 10 to October 23rd inclusive)

| | | | |
|---------------------------------------|------------|---------------|--------------------|
| Air Fares | 7 x \$80. | | \$560.00 |
| Job Supervisor @ | \$150./day | 4 days | 600.00 * |
| Camp Manager @ | \$100./day | 14 days | 1,400.00 * |
| Equipment rentals @ | \$100./day | 14 days | 1,400.00 |
| Food @ \$25./day x 5 men = | 125./day | 7 days | 875.00 |
| & misc. x 7 men = | 175./day | 7 days | 1,225.00 |
| Truck rentals @ | 50./day | 14 days | 840.00 |
| Wages @ \$75./man-day x 28 man-days | | | 2,100.00 * |
| | | x 42 man-days | 3,150.00 * |
| Payroll overhead (20% of *) | | | 1,450.00 |
| | | | ----- |
| | Sub-total | | \$13,600.00 |
| Cost-plus override (25% of \$13,600.) | | | 3,400.00 |
| | | | ----- |
| | | TOTAL | <u>\$17,000.00</u> |

ADVANCE received \$5,000.00
Payable forthwith 6,000.00
Payable upon
COMPLETION 6,000.00

ACCEPTED BY:

C. Chumch

CHEQUE # 227

CASH RECEIVED BY:

R. L. Dora

*Paid in full
Dec 20/79
Team Mineral Services Inc.
R. L. Dora*

ANALYTICAL LABORATORIES LTD.

PHONE: 253-3158

455 LAUREL STREET, BURNABY, B.C. V5B 3B4

PHONE: 299-5242

852 East Hastings St., Vancouver, B.C. V6A 1R6

Nov. 28, 1979

File 0671

Ashcroft Resources Ltd.,
728 - 510 W. Hastings St.,
Vancouver, B.C.

TERMS:
NET TWO WEEKS INTEREST AT
1 1/2% PER MONTH CHARGED ON
OVERDUE ACCOUNTS.

| NUMBER | ASSAY | PRICE | AMOUNT |
|---|---|--------|------------------|
| 1008 | Geochem Au assays @ | \$3.00 | \$3024.00 |
| 1008 | Soil and rock chip samples pulverized @ | 1.00 | 1008.00 |
| | | | <u>4032.00</u> |
| | Less 10% discount | | 403.20 |
| | | | <u>\$3628.80</u> |
| <p>PAID</p> <p>cheque #258 on Dec. 4/79.</p> | | | |
| SHIPPING CHARGES: | | | |

PLEASE PAY LAST AMOUNT →

ROSE ANALYTICAL LABORATORIES LTD.

PHONE: 253-3158

6455 LAUREL STREET, BURNABY, B.C. V5B 3B7

PHONE: 299-5242

852 East Hastings St., Vancouver, B.C. V6A 1R6

Dec. 19, 1979

File # 0715

Ashcroft Resources Ltd.,
728 - 510 W. Hastings St.,
Vancouver, B.C.
V6B 1L8

TERMS:
NET TWO WEEKS INTEREST AT
1% PER MONTH CHARGED ON
OVERDUE ACCOUNTS.

| NUMBER | ASSAY | PRICE | AMOUNT |
|--------|----------------------------|--------|----------|
| 205 | Geochem Au (Gold) assays @ | \$3.00 | \$615.00 |
| 130 | Sample preparations @ | 0.25 | 32.50 |
| 75 | Sample for pulverizing @ | 1.00 | 75.00 |
| | | | <hr/> |
| | | | \$722.50 |
| | Less 10% discount | | 72.25 |
| | | | <hr/> |
| | | | \$650.25 |

PAID

cheque #273 on
Dec. 27/79

SHIPPING CHARGES:

PLEASE PAY LAST AMOUNT 

ACME ANALYTICAL LABORATORIES LTD.

PHONE: 253-3158

6455 LAUREL STREET, BURNABY, B.C. V5B 3B4

PHONE: 299-5242

852 East Hastings St., Vancouver, B.C. V6A 1R6

Sept. 28, 1979
File # 0531

ASH Croft Res.,
8120, Fairbroon Cres.,
Richmond, B.C.
V7C 1E1

TERMS:
NET TWO WEEKS INTEREST AT
1% PER MONTH CHARGED ON
OVERDUE ACCOUNTS.

| NUMBER | ASSAY | PRICE | AMOUNT |
|--------|---|--------|----------|
| 25 | Ag & Au assays @ <i>PAID</i> <i>cheque # 215</i> <i>1/79</i> | \$8.25 | \$206.25 |

ACME ANALYTICAL LABORATORIES LTD.

PHONE: 253-3158

6455 LAUREL STREET, BURNABY, B.C. V5B 3B4

PHONE: 299-5242

852 East Hastings St., Vancouver, B.C. V6A 1R6

Dec. 17, 1979
File # 0709

Ashcroft Resources Ltd.,
728 - 510 W. Hastings St.,
Vancouver, B.C.
V6B 1L8

TERMS:
NET TWO WEEKS INTEREST AT
1% PER MONTH CHARGED ON
OVERDUE ACCOUNTS.

| NUMBER | ASSAY | PRICE | AMOUNT |
|-------------------|--|--------|---------|
| 8 | Geochem Au, Hg, and As assays with soil sample preparations @ <i>PAID</i> <i>cheque #277</i> <i>on Dec. 31/79</i> | \$8.25 | \$66.00 |
| SHIPPING CHARGES: | | | |

A. F. ROBERTS, P.ENG.
CONSULTING MINING ENGINEER

404-470 Granville Street
Vancouver, B.C. V6C 1V8

January 9, 1980

Ashcroft Resources Ltd.,
Vancouver, B.C.

For Professional Services
re Geochemical Report

\$1,750.00

Expenses:

| | | |
|----------------|--------------|--------|
| Airfare | 167.38 | |
| Taxis | 15.00 | |
| Motel | 50.40 | |
| Meals | 32.88 | |
| Typing | 66.00 | |
| Copying | 60.00 | |
| Truck Rental | 80.31 | |
| Ferry | 3.00 | |
| Gas | 10.00 | |
| Blueprints | 13.26 | |
| Office Expense | <u>25.00</u> | 523.23 |

10% Overhead

2,273.23

227.32

TOTAL

\$2,500.55

THIS IS MY BILL

A. F. Roberts

A.F. ROBERTS, P.ENG.

INVOICE

MIN-EN LABORATORIES LTD.

705 WEST 15TH STREET
NORTH VANCOUVER, B.C.

Phone: 980-5814

Nº 5952

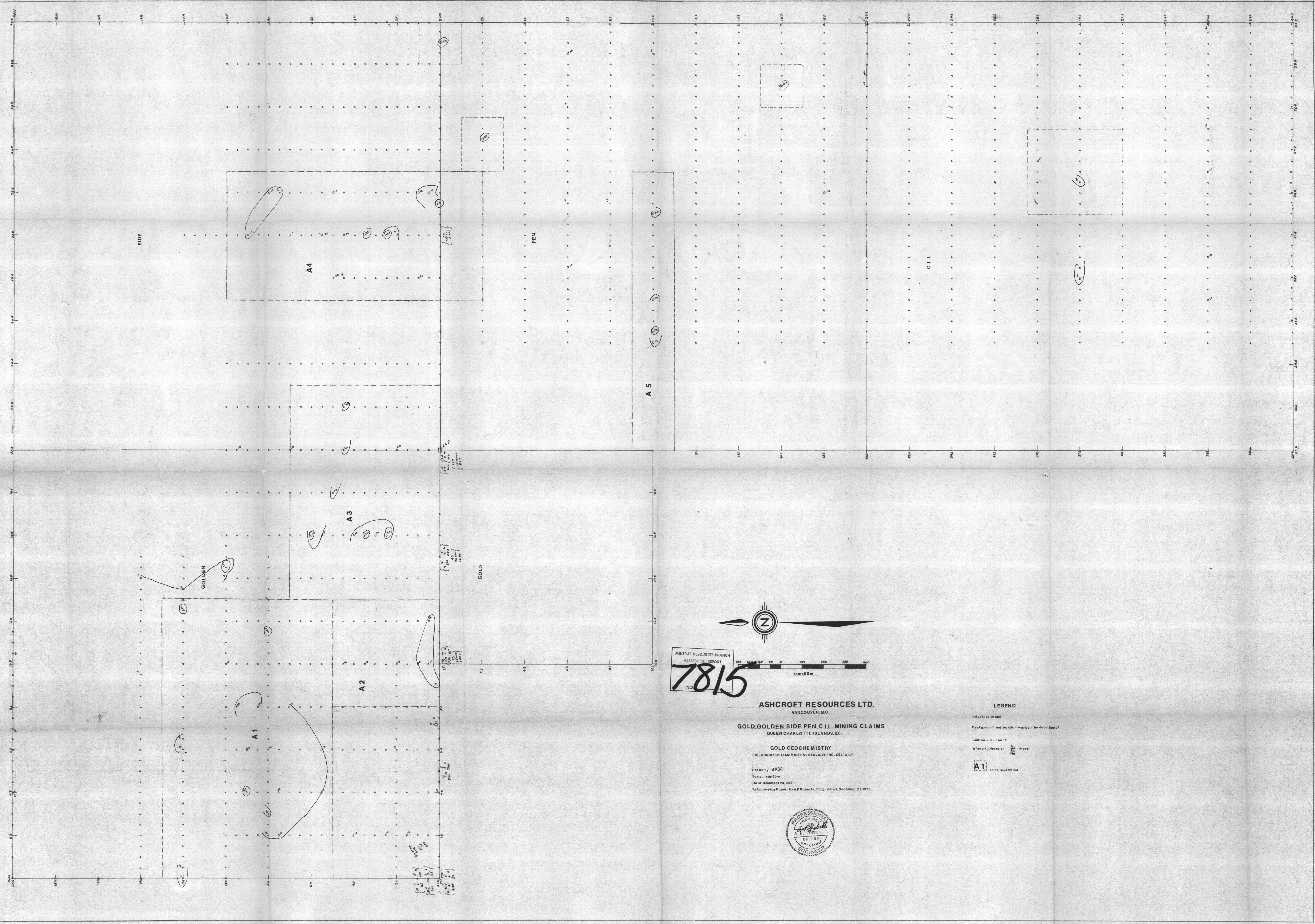
DATE Jan. 8/80.

YOUR
ORDER NO.

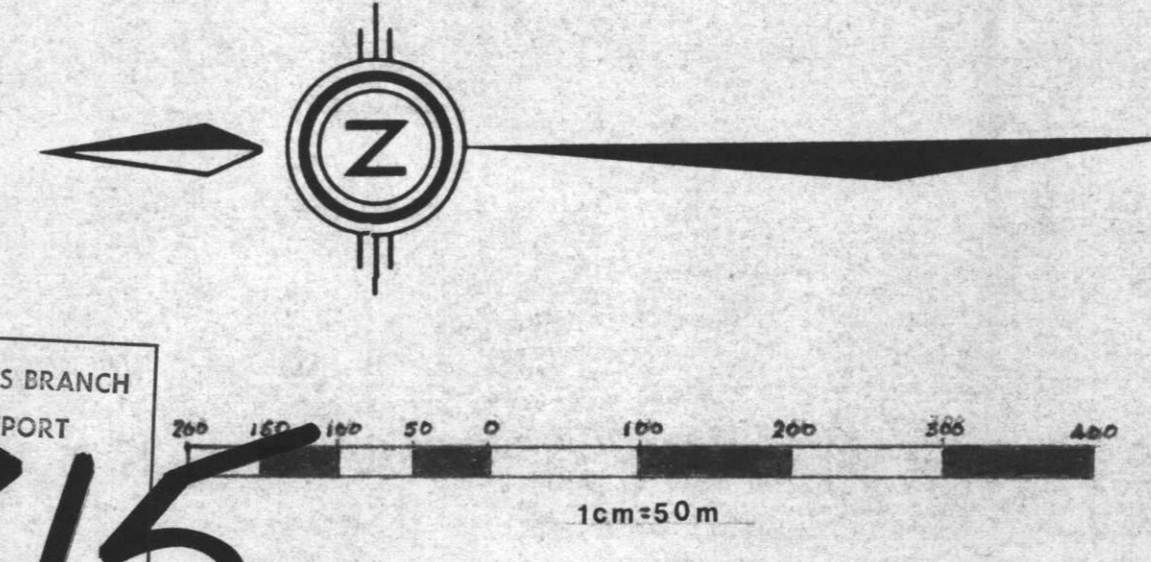
TO . Ashcroft Resources,
c/o Guardian Estates,
. 404-470 Granville St.,
. Vancouver, B.C.

| OUR ORDER NO. | TERMS | F.O.B. | Roy Roberts | | | |
|---------------|--------------------------|------------|-------------|--------|----|--|
| QUANTITY | STOCK NUMBER/DESCRIPTION | UNIT PRICE | | AMOUNT | | |
| 9-887 | | | | | | |
| 8 | soil geochem - Hg,As,Au | 10 | 50 | 84 | 00 | |
| 8 | soil sample preparation | | 50 | 4 | 00 | |
| | TOTAL | | | 88 | 00 | |

THESE ARE PROFESSIONAL SERVICES AND PAYABLE WHEN RENDERED.
OVER 30 DAYS 1.5% INTEREST WILL BE CHARGED PER MONTH.



MINERAL RESOURCES BRANCH
ASSESSMENT REPORT
NO. 7815



ASHCROFT RESOURCES LTD.
VANCOUVER, B.C.
GOLD, GOLDEN, SIDE, PEN, C.I.L. MINING CLAIMS
QUEEN CHARLOTTE ISLANDS, B.C.

GOLD GEOCHEMISTRY
FIELD WORK BY TEAM MINERAL SERVICES INC. DELTA, B.C.
Drawn by: [Signature]
Scale: 1cm = 50m
Date: December 23, 1979
To Accompany Report by A.P. Roberts, P.Eng., dated December 23, 1979.



LEGEND
All values in ppm
Background and location marked by dotted lines
Contours numbered
Where applicable: Au, Ag, Cu in ppm
A1 To be resampled