

ASSESSMENT REPORT
ON THE RESULTS OF
A DIAMOND DRILL PROGRAM
ON THE

DAVE 1155 [3] [20 UNITS] MINERAL CLAIM
AFTON-CHERRY CREEK AREA
KAMLOOPS MINING DIVISION
KAMLOOPS, BRITISH COLUMBIA

N. Lat. 50°38'

W. Long. 120°33'

for

DORADO RESOURCES LTD.
Suite 800, 543 Granville Street
543 Granville Street
Vancouver, British Columbia

by

DONALD W. TULLY, P. ENG.

MINERAL RESOURCES BRANCH
ASSESSMENT REPORT
7850
NO

PART 1062
West Vancouver, B.C.

October 15, 1979

TABLE OF CONTENTS

	<u>Page</u>
INTRODUCTION.....	1
SUMMARY AND CONCLUSIONS.....	1
PROPERTY - LOCATION, ACCESS, PHYSIOGRAPHY.....	2
CLAIMS.....	3
HISTORY AND PREVIOUS DEVELOPMENT.....	3
REFERENCES.....	5
GEOLOGICAL SETTING.....	6
DIAMOND DRILL HOLE RESULTS.....	7
RECOMMENDATION.....	8
TIME - COST DISTRIBUTION.....	9
CERTIFICATE.....	10

MAPS

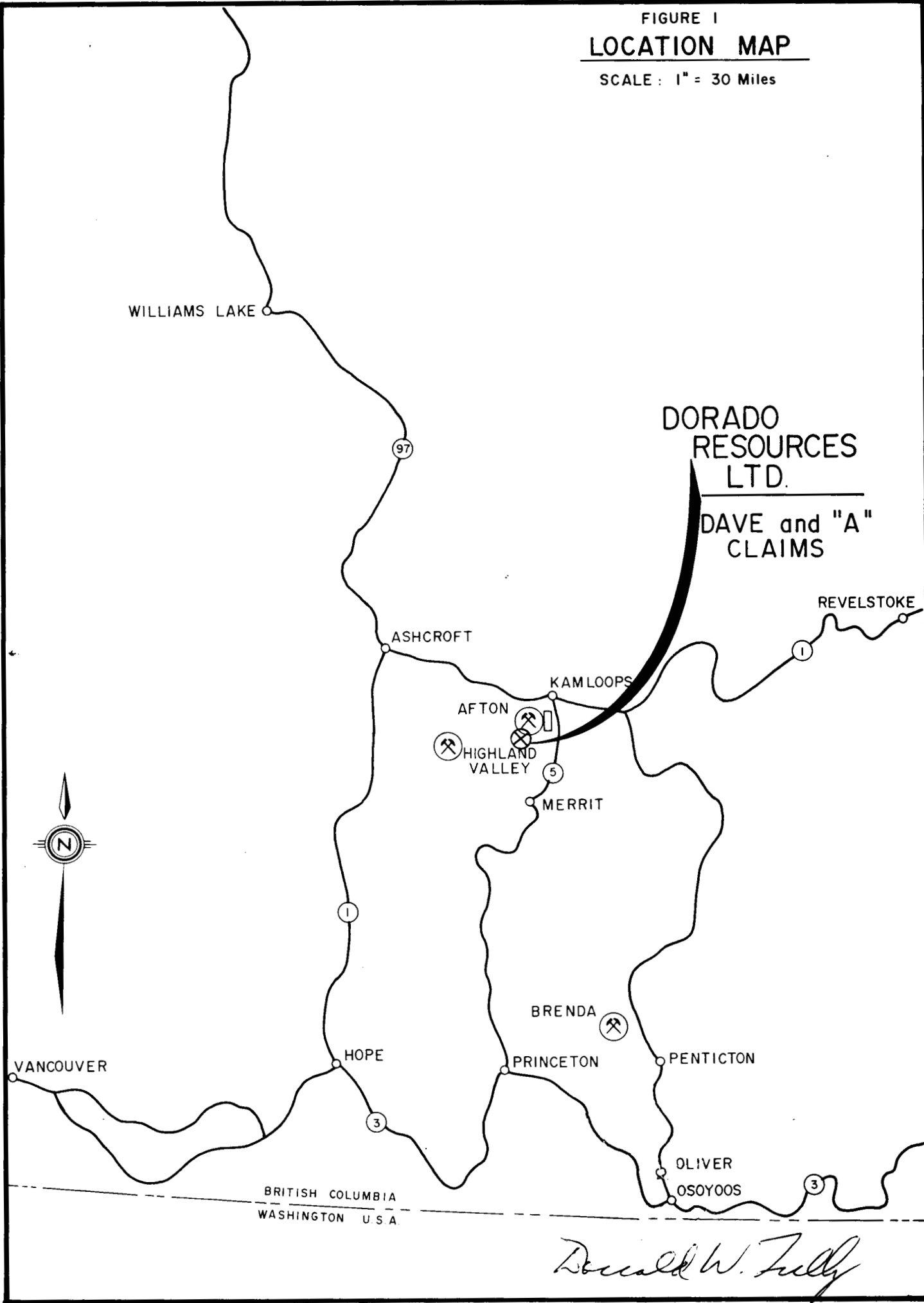
Figure 1 - Location Map.....	[Frontispiece]
Figure 2 - Topographic and Land Division Map.....	[Following page 1]
Figure 3 - Claim Map.....	[Following page 2]
Figures 4,5 - 7 - Revised Plan showing Location of Diamond Drill Holes Nos. 1 and 2.....	[In pocket]
Figure 5 - Cross-Section [16.75s] of Diamond Drill Holes Nos. 1 and 2.....	[Following page 6]

APPENDIX

Logs of Diamond Drill Holes Nos. 1 and 2	
Assay Certificate for spectrographic analysis of a section of hardpan core in D.D. Hole No. 1	

FIGURE 1
LOCATION MAP

SCALE : 1" = 30 Miles



**DORADO
RESOURCES
LTD.**

**DAVE and "A"
CLAIMS**



BRITISH COLUMBIA
WASHINGTON U.S.A.

Donald W. Felly

INTRODUCTION

This assessment report was prepared pursuant to a request by Dorado Resources Ltd., Suite 800, 543 Granville Street, Vancouver, British Columbia.

The purpose of this report is to summarize the results of a program of two diamond drill holes designed to investigate an apparent conductor zone located during a VLF electromagnetic reconnaissance survey, done during late February, March and April, 1979.

The period of the field work during the drilling investigation was June 25, 1979 through July 21, 1979.

SUMMARY AND CONCLUSIONS

The DAVE and "A" claims comprise twenty-four contiguous claim units, located south of the Afton Mines property astride Cherry Creek some 15 kilometres west of Kamloops, British Columbia [Figure 1].

Volcanics belonging to the Nicola and the overlying Kamloops group of rocks cover the property. Considerable overburden occupies the north part of the DAVE claims.

Previous development work as a result of a reconnaissance VLF electromagnetic survey indicated an apparent conductor in the vicinity of Cherry Creek. Because of the proximity of the apparent conductor area to Cherry Creek it was thought the apparent conductor anomalous zone could be a shear-fault and warranted a drill test. This zone was traced for a north-south strike length of 1,150 feet [350 metres] and is continuing southward.



KAMLOOPS LAKE

BRITISH COLUMBIA

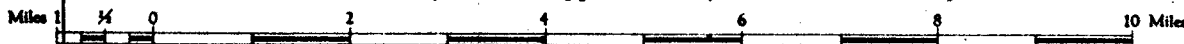
KAMLOOPS DIVISION OF YALE LAND DISTRICT

Scale 1:125,000 or approximately 2 Miles to 1 Inch.

FIGURE 2

TOPOGRAPHIC
& LAND
DIVISION MAP

October 15, 1979



Scale of Kilometres



Donald J. Kelly

The diamond drill hole test was done with NQ size core. A total of 682.5 feet [208 metres] was drilled in two holes and of this 341.5 feet [104 metres] of overburden penetration was performed. No mineralization of economic significance was intersected although a major size multiple shear zone was found in Hole No. 2. This shear zone may have mineralization at some point along strike and down dip, if thoroughly explored. It is interesting to note that the hardpan found at the bedrock - overburden interface showed a value of 0.01 percent copper when submitted for a 30 element spectrographic analysis [See Appendix].

It is concluded that the cause of the apparent conductor anomaly in the area of the diamond drill test is due to the migration of meteoric water and telluric earth currents in the intensely sheared volcanic rocks intersected in the drilling. This strong shear zone appears to persist along a north-south strike for a considerable distance and warrants further geophysical testing to search for concentrations of sulphide mineralization.

PROPERTY - LOCATION, ACCESS, PHYSIOGRAPHY

The DAVE claim comprises twenty units and the "A" claim has four units for a total group of 24 units. These claims are located astride Cherry Creek about one kilometre south of the AFTON mine property and some 15 kilometres west of Kamloops, British Columbia.

Access by motor car is from the hamlet of Cherry Creek and southward along the Dominic Lake road a distance of about five road kilometres.

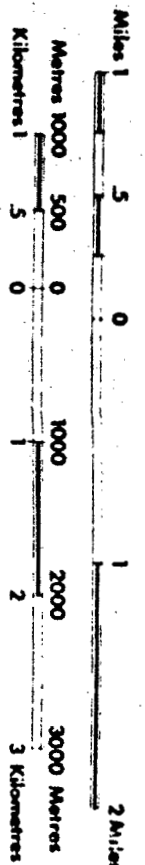
Elevations vary over the property from a low of about 2,600 feet [800 metres] in the northeast part to a



BONUS IS DRAWN IN RELATION TO L.1030 AND IS ALSO A REFERENCE TO OF 27 30

LEGEND

- CROWN-GRANTED MINERAL CLAIM
- - - REVERTED CG MINERAL CLAIM
- FORFEITED MINERAL CLAIM
- VERIFIED LEGAL CORNER POST
- LEGAL SURVEY
- LEGAL CORNER POST & TAG NUMBER 0341



UNLESS VERIFIED OR LEGAL CORNER POST IS BASED ON THEIR INSPECTION, APPLY TO CONCERNED DATE OF MICROFILM: 79-5-7

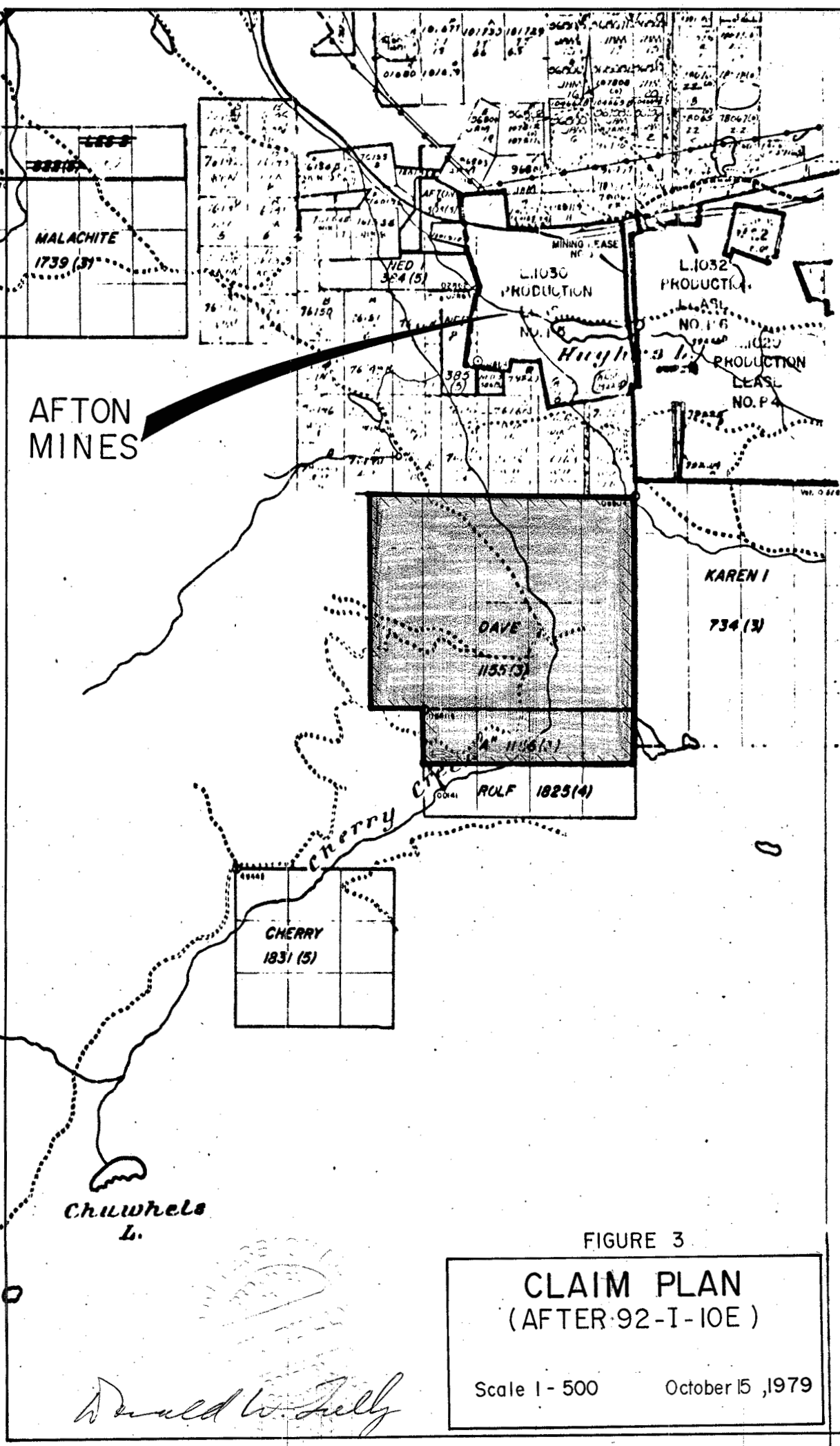


FIGURE 3

CLAIM PLAN
(AFTER 92-I-10E)

Scale 1 - 500 October 15, 1979

Donald W. Kelly

high of about 3,600 feet [1,100 metres] in the southwest portion. Cherry Creek traverses the DAVE and "A" claim area in a north-northwest direction and controls the drainage pattern of the area. The water rights along Cherry Creek are understood to be held by several individuals.

Sand, gravel and loam cover the claim area. A small amount of agricultural land lies on Section 23 near the north boundary of the DAVE claim. Otherwise the claim area is covered with second growth fir, spruce and underbrush.

CLAIMS

The DAVE and "A" claims are situated in the Kamloops Mining Division in the Kamloops Land District in Township 19, Range 19 West. The DAVE claim covers a substantial amount of Section 23, the south portion of Section 26 and part of Broken Section 27A. The claims are recorded as follows:

<u>Claim Name</u>	<u>Record Number</u>	<u>Number of Units</u>	<u>Record Date</u>	<u>Recorded Holder</u>
DAVE	1155(3)	20	March 6, 1978	Dorado Resources Ltd.
"A"	1156(3)	4	March 6, 1978	Dorado Resources Ltd.

The claims are shown on British Columbia Ministry of Mines and Petroleum Resources mineral claim map M92-I-10E [Figure 3].

HISTORY AND PREVIOUS DEVELOPMENT

The claim area was staked in 1971 and occupied by the BILL, GAL, CROW and SKELLY claim groups. Most of these claims were held under option by Granite Mountain

Mines Ltd. [NPL] and Exeter Mines Ltd. [NPL] until 1975. Later the KEV, MAUREEN and JIM claim groups covered this ground but were subsequently lapsed. This ground was recently staked by Mr. Uno Leis.

Previous development on this ground was recorded with the B.C. Ministry of Mines and Petroleum Resources as assessment work. It was performed for Granite Mountain Mines and Exeter Mines. A magnetometer survey was done by W. Meyer and Associates in early 1972 over most of the present claim area. The survey was done along flagged lines some 130 metres apart.

Anomalous magnetic patterns were found trending in a northwesterly direction more or less parallel to the trend of the Cherry Creek valley depression. In March and April of 1972, McPhar Geophysics Limited did an Induced Polarization survey over the northeast portion of the BILL and GAL claims. McPhar located several areas of response.

Several of the magnetic and induced potential anomalies in the northern portion of the DAVE claim were tested by percussion drill holes by Granite Mountain Mines in the summer of 1972. According to personal communication from Mr. W. Meyer, P. Eng., who was consultant to Granite Mountain on this drill test, some eight percussion drill holes were done totalling in the order of 2,500 feet of drilling on the anomalous areas and the assay results from this drill test were inconclusive. According to the record, this program of drill test work was not filed for assessment credit.

In the past the Kamloops area has been known as a geological environment for numerous small deposits of

copper-pyrite in and adjacent to the Iron Mask Batholith. This activity dates back prior to the turn of this century. Many of these deposits were operated in the past whenever metal prices were strong. The record shows small tonnages of good grade copper with some gold content were produced from a few deposits in this area.

In late February and early March, 1979, a reconnaissance VLF electromagnetic survey was conducted over the DAVE and "A" claims. An apparent conductor zone was found as a result of this work.

Detailed Horizontal Loop and [VLF] Ronka Surveys were done in the period March 30 - April 1, 1979 inclusive.

Geotronics Surveys Ltd., Vancouver, British Columbia confirmed the existence of this apparent conductor zone using the Shootback Method on June 7, 1979.

REFERENCES

Annual Reports of the Minister of Mines, British Columbia

N.T.S. Topographic Map 92-I/10E

B.C. Ministry of Mines and Petroleum Resources mineral claim map 92-I/10E

Geological Survey of Canada Memoir 249

" " " " Map 886A

" " " " Map 887A

" " " " Aeromagnetic Map 5216G

Report on a Magnetometer Survey of the BILL and GAL claims for Granite Mountain Mines Ltd. [NPL] and Exeter Mines Ltd. [NPL] by W. Meyer and Associates Ltd., dated May 25, 1972 - B.C. Assessment Report No. 3658

Report on an Induced Polarization Survey over part of the BILL and GAL claims by McPhar Geophysics Limited dated April 17, 1972 - B.C. Assessment Report No. 3659.

Personal communication with W. Meyer, P.Eng., on March 13, 1978

The Afton Discovery - Chester Miller, Western Miner, February 1973

The Afton Mines Project - Pamela Bottomley, Western Miner, January 1978

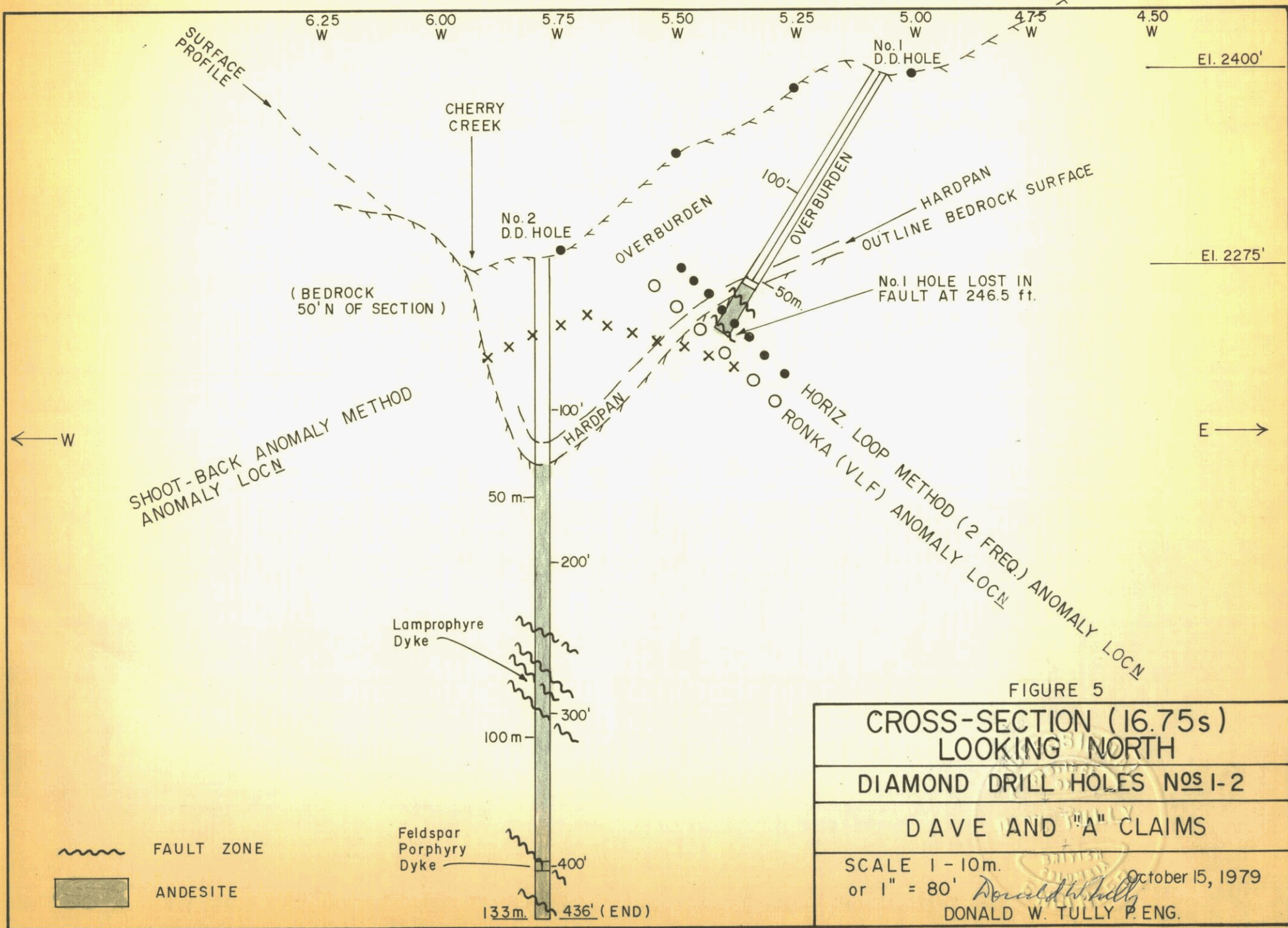
Assessment Report on the Results of A Reconnaissance VLF Electromagnetic and Radiometric Survey on the DAVE 1155[3] and "A" 1156[3] Claims dated March 16, 1979 by Donald W. Tully, P.Eng.

Assessment Report on The Results of a Detailed VLF Electromagnetic and Horizontal Loop Electromagnetic Survey on part of the DAVE 1155[3] and "A" 1156 [3] claims, Afton-Cherry Creek Area, Kamloops Mining Division, Kamloops, B.C., dated April 17, 1979

GEOLOGICAL SETTING

A preliminary examination of the geology over the DAVE and "A" claim area indicates this property is underlain by Nicola volcanics and the later Kamloops Group of similar-type volcanic rocks. Diorite-monzonite phases seen in the outcrops of volcanics may be intrusive and probably related to the late interaction phases of the nearby Sugarloaf and Cherry Creek intrusions of the Iron Mask Batholithic mass. A tentative table of formations is as follows:

<u>Formation</u>	<u>Age</u>
Sand, gravel, alkali beds and unconsolidated sediments	Recent [Quaternary]
Kamloops - Volcanics	Tertiary
Intrusives [?] - Diorite - Monzonite	Jurassic and probably of much later time frame
Nicola - Volcanics	Triassic



Structurally, the surface features observed in the rock outcrops show a northwest trend with steep dips, frequently northeast. Shearing and schistose structures were noted especially along the east side of the valley depression occupied by Cherry Creek. The strong shear zone intersected in D.D. Hole No. 2 confirms the presence of a major fault structure in the diamond drill test area of the valley bottom of Cherry Creek.

DIAMOND DRILL HOLE RESULTS

Two NQ size [1-13/16 in.] [47 mm] diamond drill holes were put down [Figures 4 and 5]. The purpose of the diamond drill holes was to test an apparent electromagnetic conductor area [Figures 4 and 5]. D.D. Hole No. 1 penetrated 206.5 feet of overburden at an angle of 62 degrees. This hole encountered sheared, brecciated and caving andesitic bedrock and was abandoned at 246.5 feet [75 metres]. A 30 element spectrographic analysis showed small amounts of copper and traces of gold and silver were present in a hardpan layer at the bedrock-overburden surface. This horizon of hardpan was intersected between 173.5 and 206.5 feet of depth in this hole [Figure 5]. This same layer was found in D.D. Hole No. 2 between the depth of 123 and 135 feet. In both cases bedrock lay immediately below the hardpan horizon [see log in APPENDIX].

D.D. Hole No. 2 was drilled vertical down from a point 280 feet [85 metres] west of the collar of D.D. No. 1 and at an elevation about 125 feet [39 metres] below it. D.D. Hole No. 2 intersected chiefly chloritized and epidotized andesitic volcanics. Most of the andesite

intersected was sheared but medium grained massive sections were in evidence [see log in APPENDIX].

No mineralization of significance was observed in both drill holes.

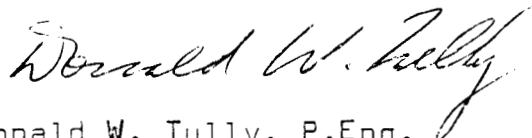
The total depth drilled in both holes was 682.5 feet [208 metres]. The amount of core recovered was 341 feet [104 metres]. This amounted to a recovery of 57 percent in Hole No. 1 and 80 percent in No. 2 Hole.

The core is stored on the property at the collar of location of D.D. Hole No. 2.

RECOMMENDATION

Further study is proposed of the geological features of the major shear zone intersected in the diamond drill test. Changes in strike and dip could provide a locus for sulphide mineral concentration. Deep penetrating induced polarization geophysical investigation has not been done in this area of the property and might provide a target for further testing of this shear zone.

Respectfully submitted,



Donald W. Tully, P.Eng.

October 15, 1979

TIME - COST DISTRIBUTION

Period - June 25, 1979 through July 21, 1979

Contractor - Shepherd Enterprises Ltd.
c/o Tonto Drilling Ltd.
Kamloops, British Columbia

Personnel - Joseph Egan
c/o Tonto Drilling Ltd.
Kamloops, B.C.

Leo Letendre
c/o Tonto Drilling Ltd.
Kamloops, B.C.

Errol Thompson
c/o Tonto Drilling Ltd.
Kamloops, B.C.

Jeff Mueller
c/o Tonto Drilling Ltd.
Kamloops, B.C.

Donald W. Tully, P.Eng.
Suite 102-2222 Bellevue Avenue
West Vancouver, B.C. V7V 1C7

Equipment - Longyear Super 38 Diamond Drill
[Cost figures supplied by Dorado Resources
Accounting Office]

Cost Summary

Drilling	[including mobilization-demobilization, drilling through overburden costs, labour and supplies]	\$ 21,993.04
Target Preparation	[including administration, travel, engineering report and assaying]	\$ 10,462.73

CERTIFICATE

I, DONALD WILLIAM TULLY, of the Municipality of West Vancouver, Province of British Columbia, hereby certify as follows:

1. I am a Consulting Geologist with an office at Suite 102, 2222 Bellevue Avenue, West Vancouver, British Columbia.
2. I am a registered Professional Engineer in the Provinces of British Columbia and Ontario.
3. I graduated with a degree of Bachelor of Science, Honours Geology, from McGill University in 1943.
4. I have practiced my profession for thirty-four years.
5. This report dated October 15, 1979 is based on a personal knowledge of the area from work done in 1979 and from personal communications.
6. I have no direct, indirect or contingent interest in the Dave or "A" mineral claims or the securities of Dorado Resources Ltd., nor do I intend to receive any interest.
7. Written permission is required from the writer to publish this report in any Prospectus or Statement of Material Facts.

DATED at West Vancouver in the Province of British Columbia this 15th day of October, 1979.



Donald W. Tully, P.Eng.
Consulting Geologist

APPENDIX

PROPERTY - DORADO RESOURCES LTD. - Suite 800, 543 Granville Street, Vancouver, B.C.

HOLE LOCATION - Dave Claim, Unit W-S (S $\frac{1}{2}$ Sec. 26, T 19, R 19, Kamloops L.D.

ELEVATION - 2400 a.s.l.

SECTION - 16.75N, 4.90W

LEVEL - Surface

DIAMOND DRILL CORE LOG - SAMPLE RECORD

CORE SIZE - NQ (1-13/16") (47mm)

DIRECTION - Due West

Depth- 75.2 Metres

DIP 62° (minus)

HOLE No. 1 PAGE No. 1

LENGTH IN METRES		METRES	DESCRIPTION	MINERALIZATION	SAMPLE No.	ASSAYS						
FROM	TO					From	To	Length	AU	AG	ZN	CU
0	51.8		Sand, gravel, boulders and unconsolidated overburden									
51.8	52.9		Andesitic boulders and assorted granitic cave rock									
52.9	56.8		Hardpan and schistose fault gouge (?), occasionally banded, few pebbles, blue-black color, absorbs water, tendency to have a plastic feel	Sample of this core split and sent for 30 element spectrographic analysis. It assayed a trace of gold and silver and 0.01% copper. (See Appendix)								
56.8	62.9		Hardpan as above with scattered pebbles in matrix									
62.9	68.3		Andesite, granular, chloritic, local shears at 45-65 degrees to core-axis (C/A)	Scattered, isolated pyrite grains								
68.3	69.3		Fault zone - sheared, chloritized andesite									
69.5	71.4		Volcanic tuff, shearing at 60 - 80 degrees C/A, fine quartz-calcite-anhydrite veinlets									
71.4	75.2		Andesite, chloritized with shearing at 72.3' and 72.9 - 74.1'									
			END									
			NOTE: Rods stuck in fault zone at 72.9-74.1 - hole abandoned	Core recovered in bedrock = 57% Core lost = 43%								

JRB. FORM 17-6-66

C/A = core axis

CORE Logged by: Donald W. Tully, P.Eng.

Core split by: DWT

HOLE STARTED: June 26, 1979

HOLE FINISHED: July 12, 1979

PROPERTY - DURADO RESOURCES LTD. - Suite 800, 543 Granville Street, Vancouver, B.C.

HOLE LOCATION - Dave Claim, Unit W, S, (S $\frac{1}{2}$ Sec. 26, T 19, R 19, Kamloops L.D.)

ELEVATION - 2275 a.s.l.

SECTION - 16.75N - 5.75W

LEVEL - Surface

DIAMOND DRILL CORE LOG - SAMPLE RECORD

CORE SIZE - NQ (1-13/16") (47mm) DIRECTION - Vert.

Depth- 132.9 Metres

DIP20..... (minus)

HOLE No.2..... PAGE No.1.....

LENGTH IN METRES		DESCRIPTION	MINERALIZATION	SAMPLE No.	ASSAYS						
FROM	TO				From	To	Length	AU	AG		ZN
0	33.5	Sand and boulders									
33.5	37.5	Boulder pile									
37.5	41.2	Hardpan - blue-black, scattered pebbles, slightly plastic, absorbs water									
41.2	46.0	Andesite breccia, somewhat massive chloritized, patches epidote alteration, sheared @ 45-60 degrees to C/A									
46.0	46.6	Fault zone - soft, chloritized and blocky									
46.6	50.3	Andesite - massive, chloritized, epidotized, minor leached areas, blocky @ 156-158									
50.3	50.6	Fault zone - soft, chloritized, very blocky									
50.6	52.7	Andesite - grey leach areas, chloritized, some clusters epidote, shearing @ 50-65 degrees C/A									
		(See page 2)									

JEB. FORM 17-6-66

C/A = core axis

CORE Logged by: Donald W. Tully, P.Eng

Core split by :

HOLE STARTED : July 12, 1979

HOLE FINISHED : July 20, 1979

PROPERTY - DORADO RESOURCES LTD. (Continued from page 1)

HOLE LOCATION - Dave Claim, Unit W, 45, (S $\frac{1}{2}$ Sec. 26, T 19, R 19, Kamloops L.D.)

ELEVATION - 2275 a.s.l.

SECTION - 16.75N - 5.75W

LEVEL - Surface

DIAMOND DRILL CORE LOG - SAMPLE RECORD

CORE SIZE - NQ (1-13/16") (47mm)

DIRECTION - Vert.

Depth- 132.9 Metres

DIP90° (minus)

HOLE No.2..... PAGE No.2.....

LENGTH IN METRES		METRES	DESCRIPTION	MINERALIZATION	SAMPLE No.	ASSAYS						
FROM	TO					From	To	Length	AU	AG	ZN	CU
52.7	53.0		Fault zone-hematite on shear planes									
53.0	54.7		Andesite section with 2" fault breccia zone @ 53.8 M									
54.7	56.7		Lamprophyre dyke - biotite									
56.7	59.1		Andesite - massive, chloritized with minor epidote alteration									
59.1	59.8		Fault zone									
59.8	65.2		Andesite - chloritized with considerable alteration in patches, some shears @ 45 - 60 degrees to C/A									
65.2	66.9		Fault zone - breccia and fragments with cave in hole									
66.9	68.3		Andesite as above									
68.3	78.0		Diorite or grained equivalent of massive andesite section									
78.0	79.9		Fault zone - chloritized olive green, sheared @ 40 - 50 degrees C/A with quartz vein @ 79.1 M									
			(See page 3)									

JEB. 11045 17-8-84

C/A = core axis

CORE Logged by: Donald W. Tully, P.Eng.

Core split by : _____

HOLE STARTED : July 12, 1979

HOLE FINISHED : July 20, 1979

PROPERTY - DORADO RESOURCES LTD. (Continued from page 2)

HOLE LOCATION - Dave Claim, Unit W, S, (S₁/₂ Sec. 26, T 19, R 19, Kamloops L.D.)

ELEVATION - 2275 a.s.l.

SECTION - 16.75N - 5.75W

LEVEL - Surface

DIAMOND DRILL CORE LOG - SAMPLE RECORD

CORE SIZE - NQ (1-13/16") (47mm)

DIRECTION - Vert.

Depth- 132.9 metres

DIP 90° (minus)

HOLE No. 2 PAGE No. 3

LENGTH IN METRES		DESCRIPTION	MINERALIZATION	SAMPLE No.	ASSAYS					
FROM	TO				From	To	Length	AU	AG	ZN
79.9	81.4	Andesite - massive dark green color								
81.4	82.3	Fault zone - fault breccia fragments								
82.3	84.5	Andesite - zone of fine quartz-calcite-anhydrite veinlets @ 45 degrees to C/A								
84.5	91.8	Fault zone - sheared @ 35-45 degrees to C/A, hematite stain on shear planes in andesite								
91.8	119.9	Andesite - medium grained, massive, chloritized, epidotized, occasional shears @ 45 degrees C/A with hematite stain. Blocky 102.4	- 105.4							
119.9	121.3	Fault zone - hematite on shear planes								
121.3	123.7	Feldspar porphyry dyke, leached to dark grey color, feldspars, kaolinized, blocky								
123.7	129.5	Andesite - some shearing @ 50-70 degrees C/A								
129.5	130.7	Fault zone - breccia fragments								
130.7	132.9	Andesite - massive, medium grained								
		<u>END</u>								
		<u>NOTE:</u> No significant sulphide mineralization was noted in the core.								
		Core recovered in bedrock = 100.3 M = 80%								

JED. 1003 17-6-64

C/A = core axis

CORE Logged by: Donald W. Tully, P.Eng.

Core split by: _____

HOLE STARTED: July 12, 1979

HOLE FINISHED: July 20, 1979

GENERAL TESTING LABORATORIES

DIVISION SUPERINTENDENCE COMPANY (CANADA) LTD

1001 EAST PENDER STREET VANCOUVER 6 B.C. CANADA
PHONE (604) 254-1647 TELEX 04-507514 CABLE SUPERVISE

TO:
DON TULLY ENGINEERING LTD.
102 - 2222 Bellevue Avenue
West Vancouver, B.C.
V7V 1C7

SEMI QUANTITATIVE SPECTROGRAPHIC ANALYSES CERTIFICATE

No.: **7907-1152** DATE: **July 20/79**

We hereby certify that the following are the results of spectrographic analyses made on: **Ore**


		1	2	3	4	5	SAMPLE No.	DESCRIPTION
Aluminum	Al	7.					1	26088 C
Antimony	Sb	ND					2	
Arsenic	As	ND					3	
Barium	Ba	0.1					4	
Beryllium	Be	ND					5	
Bismuth	Bi	ND						
Boron	B	ND						
Cadmium	Cd	ND						
Calcium	Ca	3.						
Chromium	Cr	0.005						
Cobalt	Co	ND						
Copper	Cu	0.01						
Gallium	Ga	ND						
Gold	Au	TRACE						
Iron	Fe	3.						
Lead	Pb	ND						
Magnesium	Mg	2.						
Manganese	Mn	0.07						
Molybdenum	Mo	ND						
Niobium	Nb	ND						
Nickel	Ni	0.007						
Potassium	K	2.						
Silicon	Si	MATRIX						
Silver	Ag	TRACE						
Sodium	Na	2.						
Strontium	Sr	0.05						
Tantalum	Ta	ND						
Thorium	Th	ND						
Tin	Sn	ND						
Titanium	Ti	0.3						
Tungsten	W	ND						
Uranium	U	ND						
Vanadium	V	0.01						
Zinc	Zn	ND						

All results expressed as percentages

MATRIX — Major constituent
 MAJOR — Above normal spectrographic range
 TRACE — Detected but minor amounts
 N.D. — Not detected
 ★ — Suggest assay

NOTES: Rejects retained one month.
 Pulps retained three months.
 On request pulps and rejects will be stored for a maximum of one year.

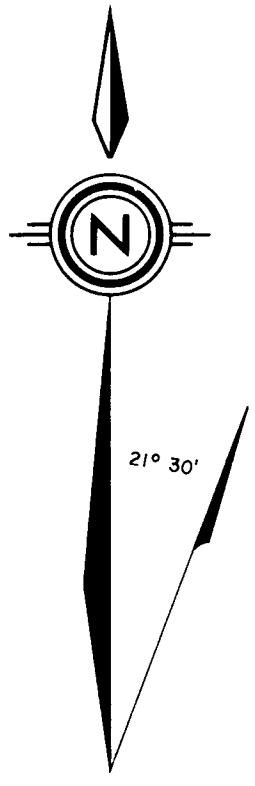
ALL REPORTS ARE THE CONFIDENTIAL PROPERTY OF CLIENTS. PUBLICATION OF STATEMENTS, CONCLUSION OR EXTRACTS FROM OR REGARDING OUR REPORTS IS NOT PERMITTED WITHOUT OUR WRITTEN APPROVAL. ANY LIABILITY ATTACHED THERETO IS LIMITED TO THE FEE CHARGED.


L. Wong, Chief Assayer

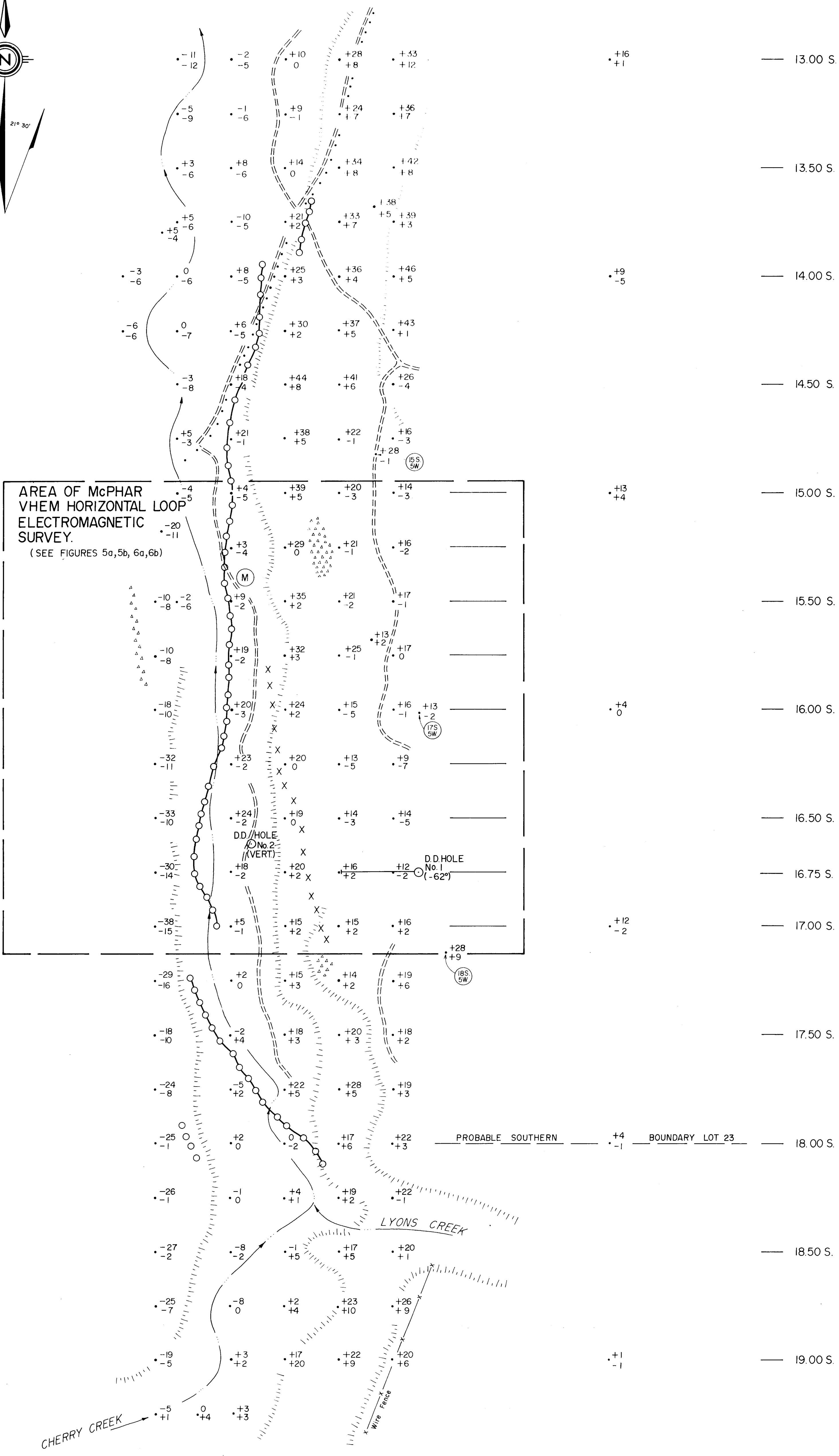
 SIGNATURE AND TITLE

Analytical and Consulting Chemists, Bulk Cargo Specialists, Surveyors, Inspectors, Samplers, Weighers

7.00 W. 6.00 W. 5.00 W. 4.00 W. 3.00 W.



AREA OF McPHAR
VHEM HORIZONTAL LOOP
ELECTROMAGNETIC
SURVEY.
(SEE FIGURES 5a,5b, 6a,6b)



- LEGEND**
- -27
• -2 RONKA EM-16 STATION AND SURVEY READING
 - RONKA EM-16 ANOMALY INDICATED
 - X X X X X McPHAR VHEM ELECTROMAGNETIC ANOMALY INDICATED
 - ==== BUSH ROAD - TRAIL
 - ~~~~~ CREEK
 - ▲▲▲▲▲ ROCK OUTCROP AREA INDICATED

MINERAL RESOURCES BRANCH
ASSESSMENT REPORT
7850
NO.

PART 1082

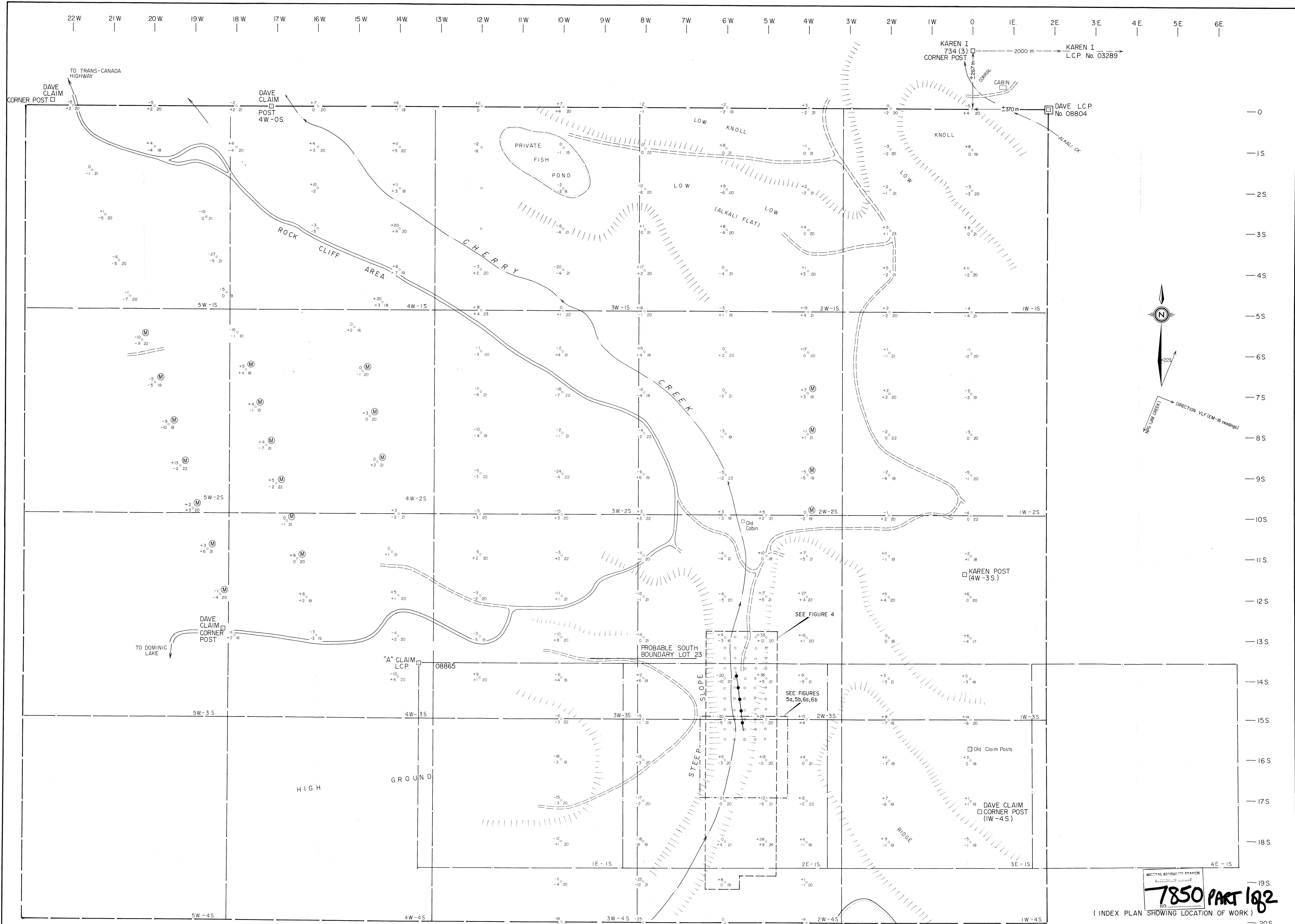
FIGURE 4
REVISED PLAN SHOWING LOCATION OF
DIAMOND DRILL HOLES No.1 and 2
OCTOBER 15, 1979 DONALD W. TULLY P. ENG.
To accompany a report dated October, 1979 by
Donald W. Tully, P. ENG.

FIGURE 4

DORADO RESOURCES LTD.
AFTON-CHERRY CREEK AREA
KAMLOOPS M.D.

PLAN
RONKA EM-16 SURVEY READINGS
AND LOCATION
McPHAR VHEM HORIZONTAL LOOP SURVEY

SCALE 1:10 m. *Donald W. Tully* APRIL 17, 1979
To accompany a report by DONALD W. TULLY, P. ENG., dated April 17, 1979.



LEGEND

LCP	LEGAL CORNER POST	●—●	APPARENT CONDUCTOR
□	CLAIM POST LOCATED DURING SURVEY	====	TRUCK ROAD
—	APPROX. DAVE CLAIM BOUNDARY	-----	LOGGING TRAIL
- - -	APPROX. "A" CLAIM BOUNDARY	→	CREEK
15-4W	CLAIM UNIT NUMBER	⋄	HIGHER GROUND
-8	IN-PHASE	Ⓜ	AREA LOCAL MAG. ATT'N. NOTED
+4	SCINT. READING (C.P.S.)		
—	OUT-OF PHASE		

MATERIAL RESOURCES BRANCH
ALBERTA GOVERNMENT
7850 PART 182
(INDEX PLAN SHOWING LOCATION OF WORK)

DORADO RESOURCES LTD.
RECONNAISSANCE VLF-ELECTROMAGNETIC &
RADIOMETRIC SURVEY
**PLAN SHOWING READINGS
DAVE & "A" CLAIMS**

CHERRY CREEK-AFTON MINE AREA
KAMLOOPS MINING DIVISION

m 50 0 50 100 150 200 250 m

To accompany a report by Donald W. Tully,
P. Eng., dated March 16, 1979. *Donald W. Tully* Fig 5-7

REVISED
APRIL 22, 1979
OCTOBER 15, 1979

ALL LOCATIONS ARE WITHIN THE LIMITS OF ACCURACY OF THE SURVEY DONE BY COMPASS AND TOPOLITE CHAIN