

COMINCO LTD.

EXPLORATION
NTS: 82F/4W

WESTERN DISTRICT
22 FEBRUARY 1980

GEOCHEMICAL SURVEY - 1979

GEORGIA PROPERTY

TRAIL CREEK MINING DIVISION, B.C.

LATITUDE: 49°05.5' LONGITUDE: 117°48'

WORK PERFORMED

20 - 29 OCTOBER 1979

| |
|---|
| MINERAL RESOURCES BRANCH ASSESSMENT REPORT 7868 NO. _____ |
|---|

REPORT BY:

R.F. NICHOLS

TABLE OF CONTENTS

| | <u>Page</u> |
|--------------------------------------|-------------|
| LOCATION AND TOPOGRAPHY | 1 |
| ACCESS | 1 |
| PROPERTY | 1 |
| SUMMARY OF WORK DONE | 1 |
| GEOLOGY | 1 |
| GEOCHEMISTRY | 1,2 |
| PRESENTATION OF DATA AND CONCLUSIONS | 2 |

ATTACHMENTS

Appendix 'A' Statement of Expenditures
Appendix 'B' Affidavit
Appendix 'C' Statement of Qualifications
Location Map 1:50,000
Gold Geochemistry 1"=200'
Mercury Geochemistry 1"=200'

COMINCO LTD.

EXPLORATION
NTS: 82F/4W

WESTERN DISTRICT
22 FEBRUARY 1980

GEOCHEMICAL ASSESSMENT REPORT

GEORGIA GROUP

TRAIL CREEK MINING DIVISION, B.C.

LOCATION AND TOPOGRAPHY

The Georgia group is located immediately north of the northern edge of the Rossland city limits, on the east flank of Monte Cristo mountain, at elevations between 3500-4000 feet.

ACCESS

A narrow one lane dirt road traverses through the middle of the group, and joins into the Monte Cristo mountain "micro-wave" road on the north, and also connects into the Rossland street system to the south.

PROPERTY

The Georgia property consists of nine reverted Crown Granted claims.

| <u>Name</u> | <u>Record No.</u> | <u>Recorded Owner</u> |
|-------------|-------------------|-----------------------|
| Georgia | 165 | M. Delich |
| Caledonia | 364 | C.M. Delich |
| Putnam | 4917 | C.M. Delich |
| Viking | 314 | C.M. Delich |
| Buckeye | 365 | C.M. Delich |
| Elanore | 369 | M. Delich |
| Iron Colt | 367 | M. Delich |
| Pott | 363 | M. Delich |
| Boomer Fr | 961 | Cominco Ltd. |

and four Crown Granted claims.

| | | |
|--------------|------|-------------------------------|
| Silverine | 732 | M. Delich, J. Stitt, M. Cowan |
| La Belle | 729 | M. Butorac |
| Evening Star | 801 | M. Butorac |
| Georgia Fr | 4668 | M. Butorac |

SUMMARY OF WORK DONE

Two hundred and sixty-nine soil samples and eighty-seven rock samples were collected on the property and analysed for gold and mercury. Control for the sample grid was provided by a company 1"=200' map of the area. Grid control was by compass and hip-chain.

GEOLOGY

The claims are predominantly underlain by interbedded sediments of the Jurassic Rossland Group. The sediments consist of thick bedded to thinly laminated siliceous siltstone and (phyllitic) argillites. The sediments are bounded on the west by intermediate to basic tuffs and flows of the Rossland Group, while to the south a large monzonite intrusive is present. The sediments are cut by numerous, northerly trending dykes, mostly of Tertiary age. The dykes include lamprophyres, granite porphyry (quartz-feldspar porphyry) and monzonite phases.

GEOCHEMISTRY

A total of two hundred and sixty-nine soil samples and eighty-seven rock samples were taken from the Georgia property.

A. Sample Collection

Soil samples were taken from the B horizon, when it could be identified, otherwise the sample was taken usually at 10 to 30 cm deep. Samples were dug by shovel and retrieved by plastic spoon or by hand. They were placed in standard kraft soil sample bags and marked for identification. Each sample location was marked in the field by a grid numbered orange flagging. Ground control was by hip chain and compass. No cut lines were utilized.

B. Sample Preparation

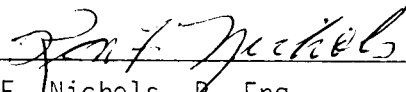
Samples were air-dried and shipped to Cominco's lab in Vancouver for analyses. There they were oven dried, sieved and the minus 80 mesh fraction analysed for gold by hot acid digestion and atomic absorption. Mercury was analysed by utilizing the Jerome Gold Film Mercury Detector.

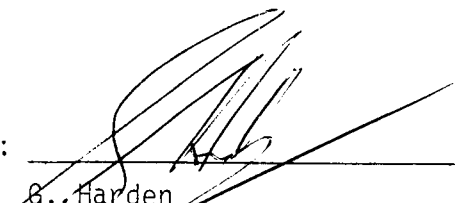
PRESENTATION OF DATA AND CONCLUSIONS

The results are plotted on maps at a scale of 1"=200'. Gold values of 20 ppb and higher are considered anomalous while mercury values in excess of 75 ppb are considered anomalous. As seen from the attached maps both gold and mercury display spotty highs and it is difficult to contour the anomalous values. No follow-up has been done on the anomalies to date.

ATTACHMENTS

- (a) Appendix 'A' Statement of Expenditures
- (b) Appendix 'B' Affidavit
- (c) Appendix 'C' Statement of Qualifications
- (d) Location Map 1:50,000
- (e) Gold Geochemistry 1"=200'
- (f) Mercury Geochemistry 1"=200'

Report By: 
R.F. Nichols, P. Eng
Geologist

Approved For Release By: 
G. Harden
Manager, Exploration
Western District

RFN:hmr

APPENDIX 'A'

STATEMENT OF EXPENDITURES

INCURRED IN CONNECTION WITH A GEOCHEMICAL SURVEY

ON THE GEORGIA PROPERTY

TRAIL CREEK MINING DIVISION

STAFF SALARIES

| | | | |
|---|----|---------------|-------------|
| R.F. Nichols 2 days (5 July, 20 October) @ \$161.04/day | \$ | 322.08 | |
| M.L. Serack 10 days (20-29 October) @ \$ 93.28/day | | 932.80 | |
| M.R. Schaumberger 10 days (20-29 October) @ \$ 99.44/day | | 994.40 | |
| M.D.J. Waskett-Myers 2 days (draftsman) @ \$ 75.00/day | | <u>150.00</u> | |
| | | | \$ 2,399.28 |

FOOD AND ACCOMODATIONS

| | | |
|----------------------------|----|--------|
| 22 man days @ \$ 25.00/day | \$ | 550.00 |
|----------------------------|----|--------|

TRANSPORTATION

| | | |
|--|----|--------|
| Truch Rental 12 days @ \$ 21.00/day | \$ | 252.00 |
| Fuel 12 days @ \$ 9.00/day | \$ | 108.00 |

ASSAY CHARGES

| | | |
|----------------------------|----|----------|
| 356 samples @ \$ 3.50 (Au) | \$ | 1,246.00 |
| 302 samples @ \$ 1.50 (Hg) | \$ | 453.00 |

TOTAL PROJECT COST \$ 5,008.28

APPENDIX 'B'

IN THE MATTER OF A GEOCHEMICAL SURVEY

CARRIED OUT ON THE GEORGIA GROUP

TRAIL CREEK MINING DIVISION

NTS: 82F/4W

AFFIDAVIT

I, R.F. Nichols, of the District Of North Vancouver, in the Province of British Columbia, hereby declare -

1. THAT I am employed as a geologist by Cominco Ltd., and as such, have a personal knowledge of the facts to which I hereinafter depose;
2. THAT annexed hereto and marked as Appendix 'A' to this report is a true copy of expenditures incurred in connection with geochemical surveys on the Georgia Group.
3. THAT the said expenditures were incurred between the 20th day of October and the 29th day of October, 1979 for the purpose of conducting a geochemical survey.

Signed: *R.F. Nichols*
R.F. Nichols, BSc, P. Eng
Geologist

APPENDIX 'C'

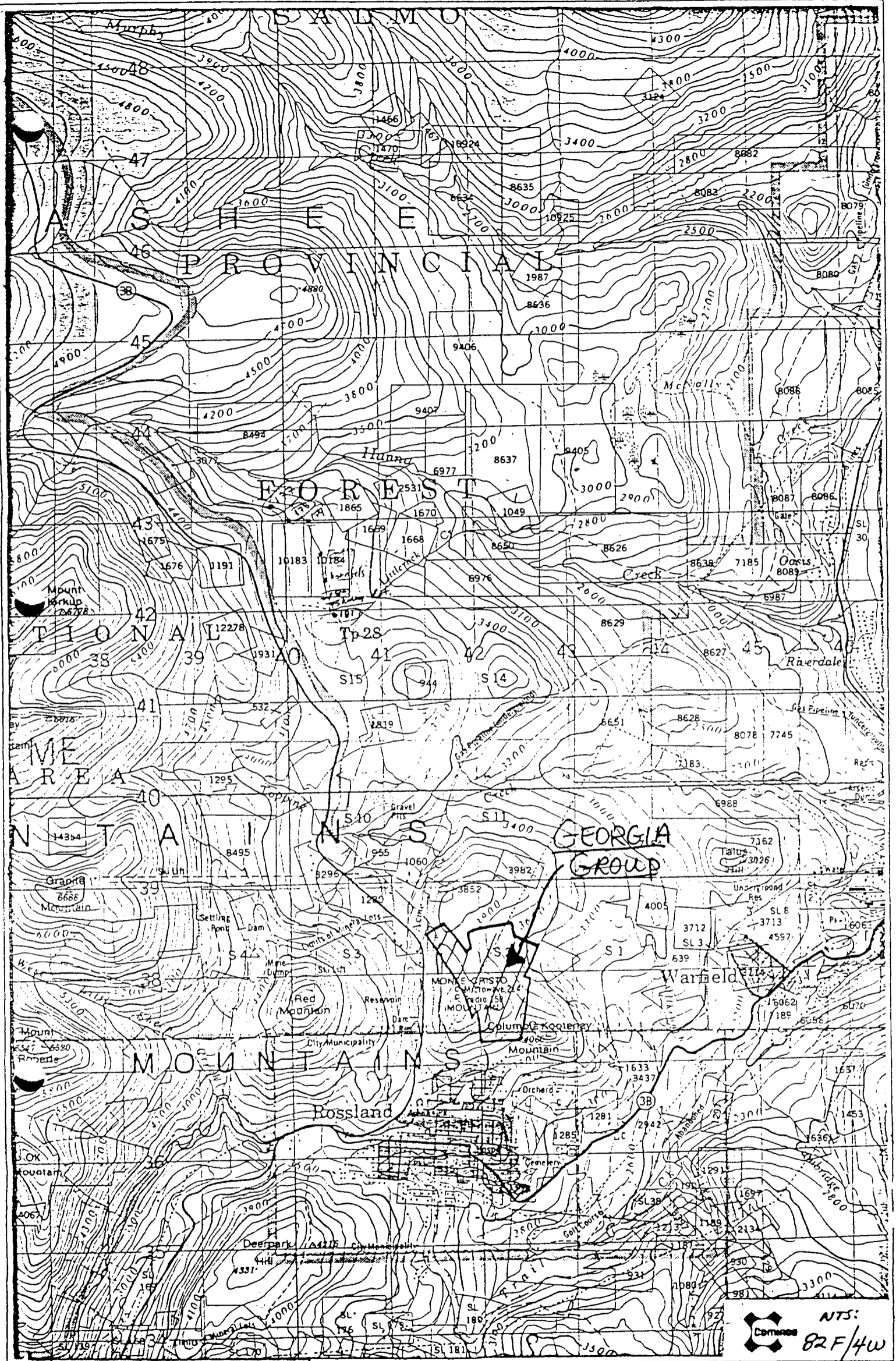
STATEMENT OF QUALIFICATIONS

I, Ronald F. Nichols, Geologist, with a business address at 409 Granville Street, Vancouver, British Columbia, do hereby certify that I have participated in and supervised the geochemical sampling program on the Georgia Group.

I also certify -

1. THAT I am a graduate of the University of British Columbia with a BSc in geology in 1967.
2. Since graduation in 1967 I have been a fulltime employee of Cominco Ltd, engaged in exploration programs.
3. THAT I am a member in good standing of the Association of Professional Engineers of the Province of British Columbia.

Respectfully Submitted: *Ronald F. Nichols*
R.F. Nichols, BSc, P. Eng
Geologist

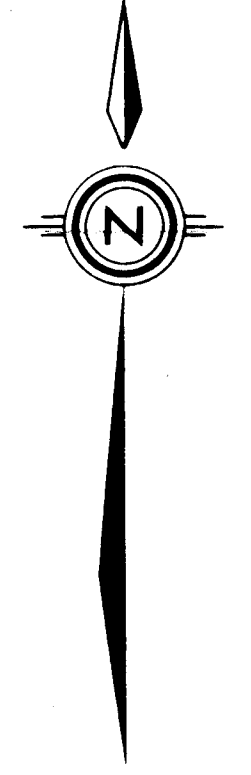
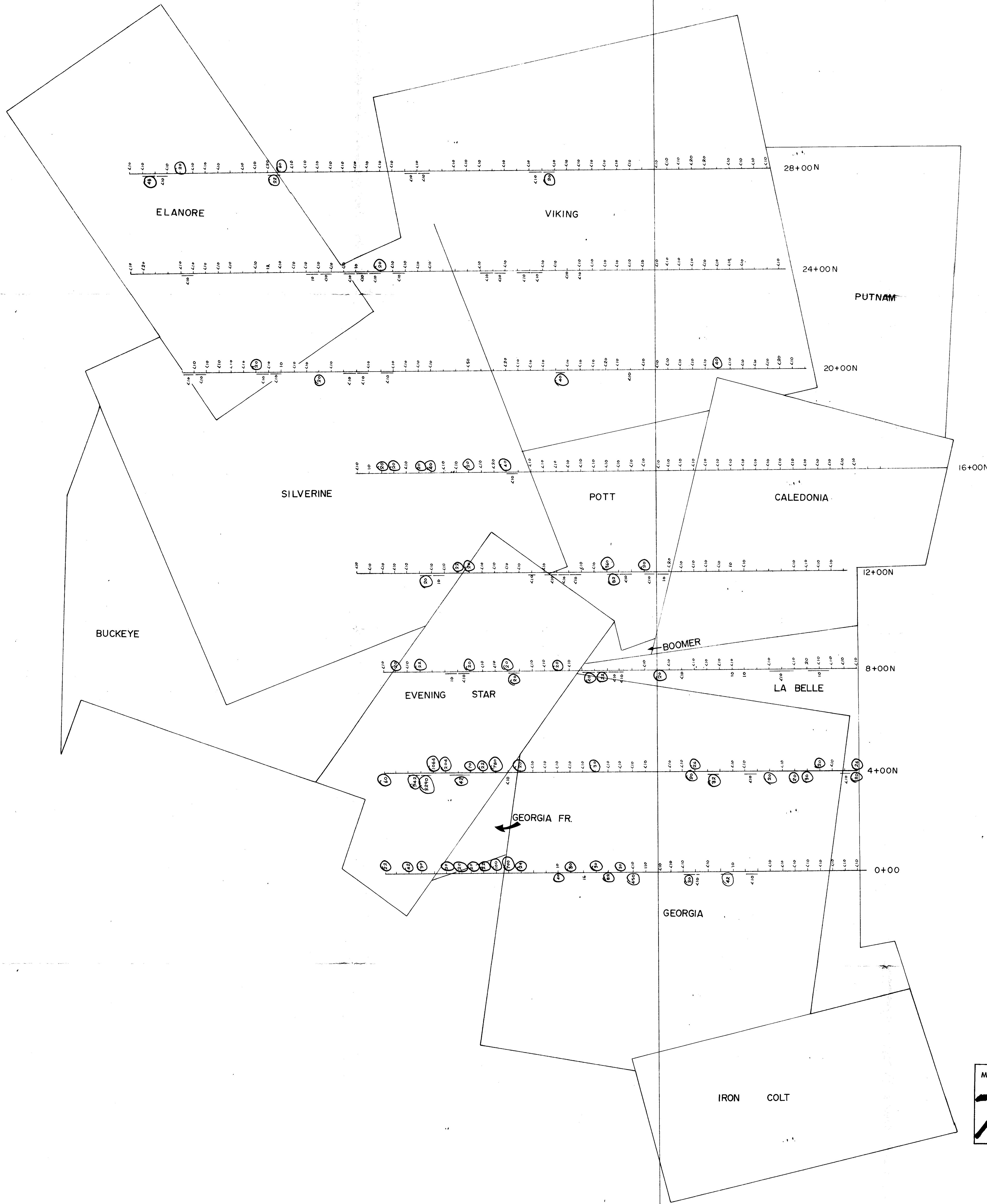


NTS:
 Compass 82F/4w

| | |
|-------------|-----------|
| Drawn by | Traced by |
| Revised by | Date |
| 7868 | |

GEORGIA GROUP
LOCATION MAP

Scale: 1:50,000 Date: February, 1980 Plate: Geo-1



○ + 20ppb Au

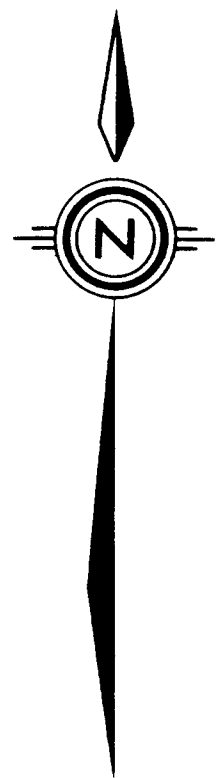
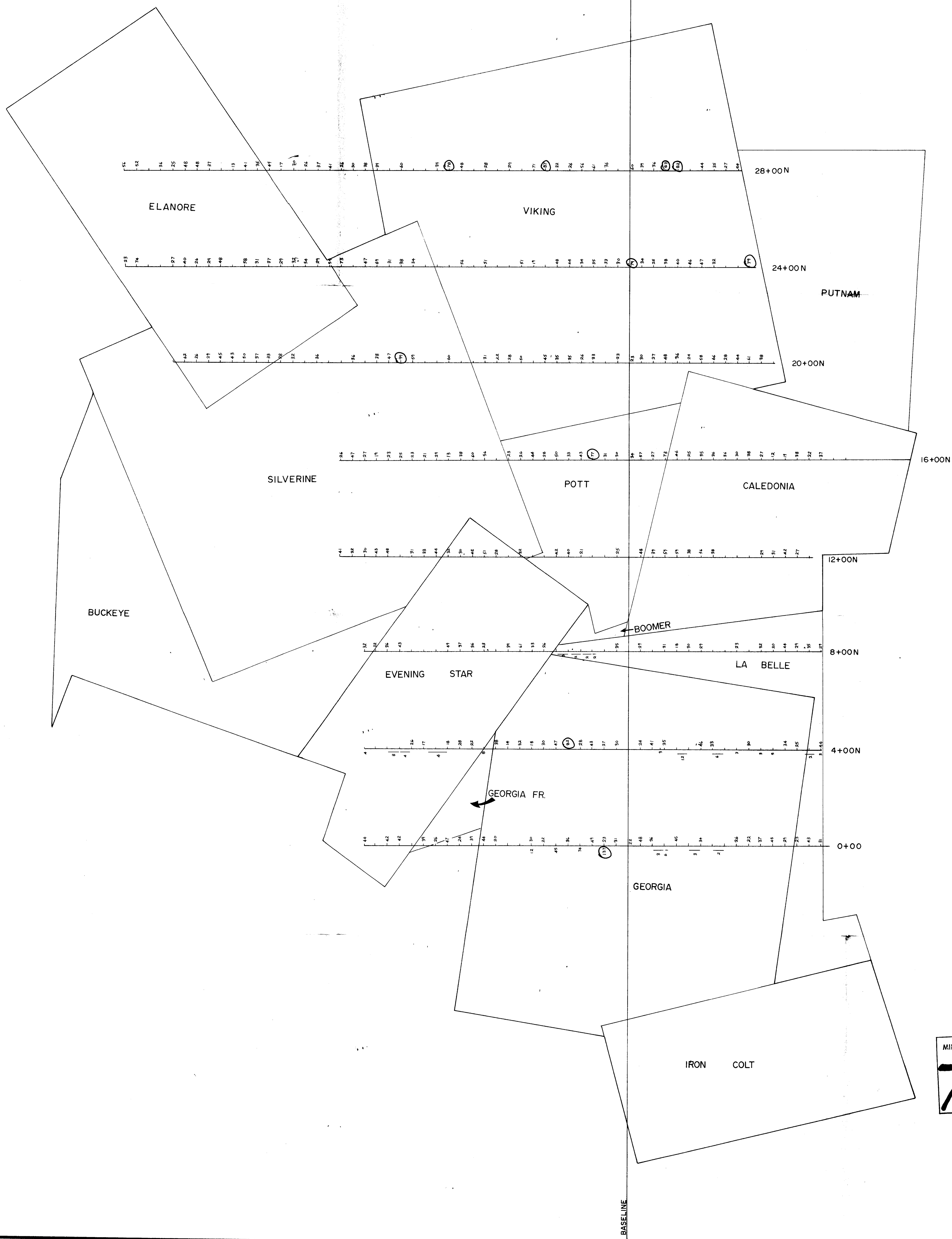
▲ Au VALUE(ppb) IN SOIL
 ▼ Au VALUE(ppb) IN ROCK &
 Distance over which sample was taken

0 200 400 FEET

MINERAL RESOURCES BRANCH
 ASSESSMENT REPORT
7868

Ron F. Nichols

| | | | | |
|----------------------------------|------------|-----------------|--------------|--------------|
| GEORGIA PROPERTY, ROSSLAND, B.C. | | | | NTS 82F/4 |
| Drawn by: | Traced by: | | | |
| Revised by: | Date: | Revised by: | Date: | |
| | | | | |
| Au VALUES IN SOILS & ROCKS | | | | |
| Scale: 1"=200' | | Date: JAN. 1980 | Plate: Geo-2 | |



0 + 75 ppb Hg

Hg VALUE(ppb) IN SOIL
 Hg VALUE(ppb) IN ROCK &
 Distance over which sample was taken

0 200 400 FEET

MINERAL RESOURCES BRANCH
 ASSESSMENT REPORT
7868

Ron F. Nichols

| | | | | |
|----------------------------------|-------------------|-------------------|-------------------|----------------------------|
| GEORGIA PROPERTY, ROSSLAND, B.C. | | | | NTS 82F/4 |
| Drawn by: | Traced by: | | | Hg VALUES IN SOILS & ROCKS |
| Revised by / Date | Revised by / Date | Revised by / Date | Revised by / Date | |
| | | | | |
| | | | | |
| Scale: 1"=200' | | | | Date: JAN. 1980 |
| | | | | Plate: Geo-3 |