

Assessment Report

on a

Short Geochemical Survey

on a portion of the

PORCUPINE GROUP

and specifically the Twilight Reverted Crown Grant
Situated near the old Centre Star (Wesko) Mine
Some two (2) kilometres Southeast
of
Ymir, B. C.

Nelson Mining Division

Latitude 49°16'N; Longitude 117°11'W

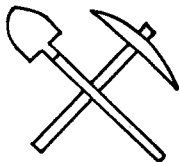
N.T.S. 82F/6 (E 1/2)

Field Work November 9, 1979.

MINERAL RESOURCES BRANCH
ASSESSMENT REPORT

7882

YMIR VENTURE



PORCUPINE GROUP

Report by

D. R. Cochrane, P. Eng.,
March 14, 1980,
Delta, B. C.

YMIR VENTURE

TABLE OF CONTENTS

	Page
INTRODUCTION	1
LOCATION AND ACCESS	2
CLAIMS INFORMATION	3
GENERAL SETTING	5
HISTORY	8
FIELD WORK	9
DISCUSSION OF RESULTS	10

FIGURES

1.	Location Map	Report body
2.	Claims Map	" "
3.	Geochemical Plan, Au, Ag	" "
4.	Geochemical Plan, Pb Zn	" "

APPENDICES

I	Assessment Work Details
II	Certificate
III	Geochemical Certificate

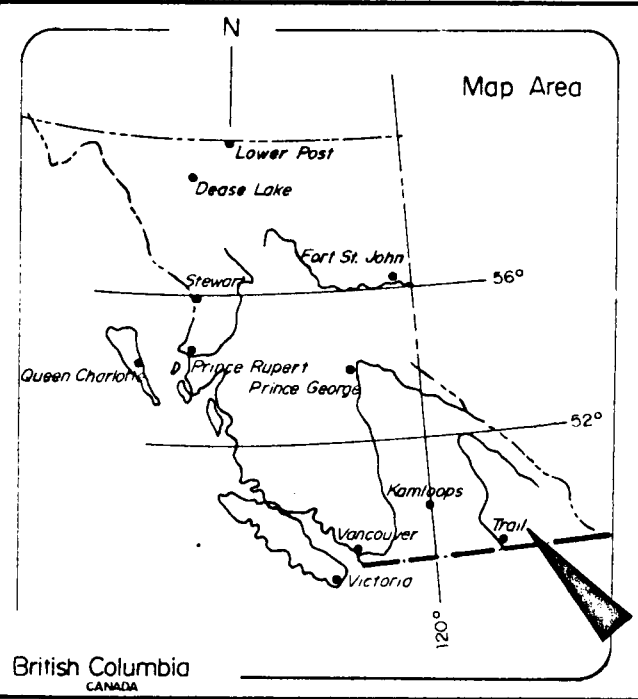
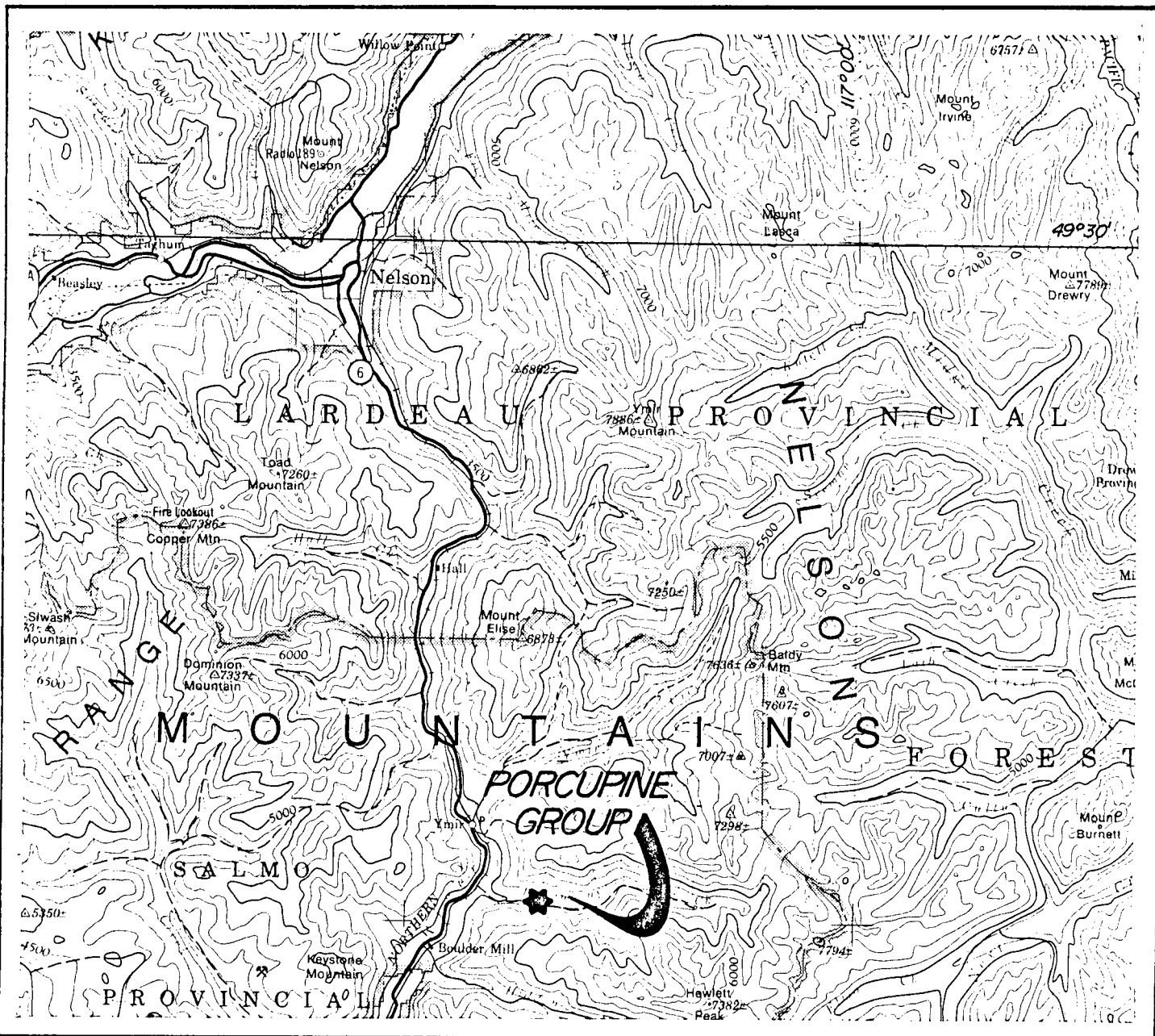
YMIR VENTURE

-1-

INTRODUCTION

On November 9, 1979, Mr. P. R. Willson, and helper, conducted a short geochemical survey on the Twilight reverted crown grant of the Porcupine Group, located immediately southeast of the settlement of Ymir, B. C., in the Nelson Mining Division.

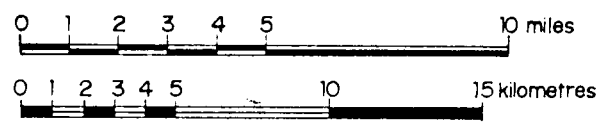
This report describes the setting, work done, and results obtained. It was prepared for assessment work credits and details are set out in Appendix I.



YMIR VENTURE
 Porcupine Group
 Nelson Mining Division
 Ymir, B. C.
 N.T.S. 82F

Figure 1
 Location Map

Scale : 1 to 250,000 or 1 inch equals approx. 4 miles.



YMIR VENTURE

-2-

LOCATION AND ACCESS

The Porcupine Group is centred on Porcupine Creek, a westerly flowing tributary of the Salmo River, in the Kootenay District of south-central British Columbia. The Twilight reverted crown grant is the northernmost claim of the group, however, and access is via the old Centre Star (Wesko) Mine road two kilometres southeast of Ymir, on the west flank of Jubilee Mountain.

The N.T.S. code for the area is 82F/6 east half.

YAMIR VENTURE

-3-

CLAIMS INFORMATION

The Twilight reverted crown grant is part of the Porcupine Group, which consists of twenty (20) reverted crown grants and new two-post claims registered in the Nelson Mining Division. Details are set out in the following table.

Note: Anniversary date years indicated in the following table are current, but do not include assessment work credits applied for in this report.

YMIR VENTURE
TABLE OF CLAIMS - PORCUPINE GROUP

CLAIM NAME	TYPE	LOT NO.	RECORD NO.	ACRES	ACQUIRED	OWNER	ANNIVERSARY DATE	YEAR
Blue Quartz	R.C.G.	7072	760	51.65	'78	D.R.C.	August 22	1981
Rover	R.C.G.	7073	761	37.84	'78	D.R.C.	August 22	1981
B. Q. No. 1	L. C.	----	1157	50 (approx.)	'79	C.F.G.	August 14	1982
B. Q. No. 2	L. C.	----	1158	50 "	'79	C.F.G.	August 14	1982
B. Q. No. 3	L. C.	----	1159	50 "	'79	C.F.G.	August 14	1982
B. Q. No. 4	L. C.	----	1160	50 "	'79	C.F.G.	August 14	1982
Scale No. 1	L. C.	----	1366	50 "	'79	P.R.W.	November 27	1980
Rule No. 1	L. C.	----	1367	50 "	'79	P.R.W.	November 27	1980
Porcupine	R.C.G.	4634	120	51.65	'75	I.U.	November 10	1980
Franklin	R.C.G.	4635	121	23.07	'75	I.U.	November 10	1980
Champagne	R.C.G.	5131	125	18.36	'75	I.U.	November 10	1980
Nevada	R.C.G.	3504	1045	48.50	'79	C.F.G.	April 9	1980
Sandalphon	R.C.G.	4639	1096	6.14	'79	C.F.G.	May 31	1980
Georgina	R.C.G.	5130	1097	33.74	'79	C.F.G.	May 31	1980
Imperial	R.C.G.	3025	1095	37.43	'79	C.F.G.	May 31	1980
Sunrise	R.C.G.	4385	982	38.17	'79	C.F.G.	March 29	1980
Emerald	R.C.G.	2907	993	30.76	'79	C.F.G.	March 29	1980
Victor	R.C.G.	2906	974	50.04	'79	C.F.G.	March 29	1980
Porcupine	R.C.G.	2908	975	42.24	'79	C.F.G.	March 29	1980
Twilight	R.C.G.	3767	1007	48.30	'79	C.F.G.	March 30	1980
Total	20 claims							

R.C.G. = Reverted Crown Grant
L. C. = Located Claim (2 post)

D.R.C. = D.R. Cochrane
C.F.C. = C.F. Graham
I.U. = I. Urquhart
P.R.W. = P.R. Willson

YMIR VENTURE

-5-

GENERAL SETTING

The Ymir Gold Camp lies within the Nelson Range of the Selkirk Mountain complex which is an impressive northerly trending upland surface bounded on the west by the Columbia River, and on the east by Kootenay Lake and River. The area is characterized by rugged peaks which rise to elevations in excess of 2200 metres above sea level with moderately steep slopes and deeply incised stream valleys.

Forest cover is extensive below elevations of about 1800 metres and consists of stands of tamarack, hemlock and fir. Above this level the vegetation is sub-alpine type, open and snow covered for many months of the years.

The area is readily accessible by air, road and rail, and the major population centers include Castlegar (which is serviced by air by P.W.A. from Vancouver), Nelson (pop. 6772 in 1951)

YMIR VENTURE

-6-

and Salmo. Ymir is essentially a "ghost town" but is strategically located in the Salmo Valley between Nelson and Salmo, and has a full compliment of "services".

The bedrock geology of the region is complex, but is dominated by the extremely large Nelson Batholith (and satellitic bodies) lying to the west of Ymir and which underlies the greater part of the entire Nelson map sheet (82F/6E).

The geological history of the area is long and involved and dates from the Precambrian through to a complex Pleistocene history. Geological bias is north-northwesterly with a few major valleys running transverse to this direction (i.e. Ymir and Porcupine Creeks.)

The mining history dates from 1885 when the first strikes were made, however, there was little attention paid to the area until the mid 1890's and after the Rosslund rush when new locations were being considered. In 1896 many

YMIR VENTURE

-7-

of the well known claims were staked and two years later the Ymir camp began to attract considerable attention. There was a brief flurry in the late 20's and early 30's but essentially the camp is an old one, and remains relatively untouched by modern exploration techniques.

YMIR VENTURE

-8-

HISTORY

The Twilight (reverted crown grant) claim was first mentioned in the 1905 Minister of Mines Annual Report, and again in the 1934 Annual Report as part of the Centre Star group owned by Wesko Exploration and Development Co. Ltd. This company directed most of their exploration effort into the Centre Star crown grant which adjoins the Twilight immediately to the northeast.

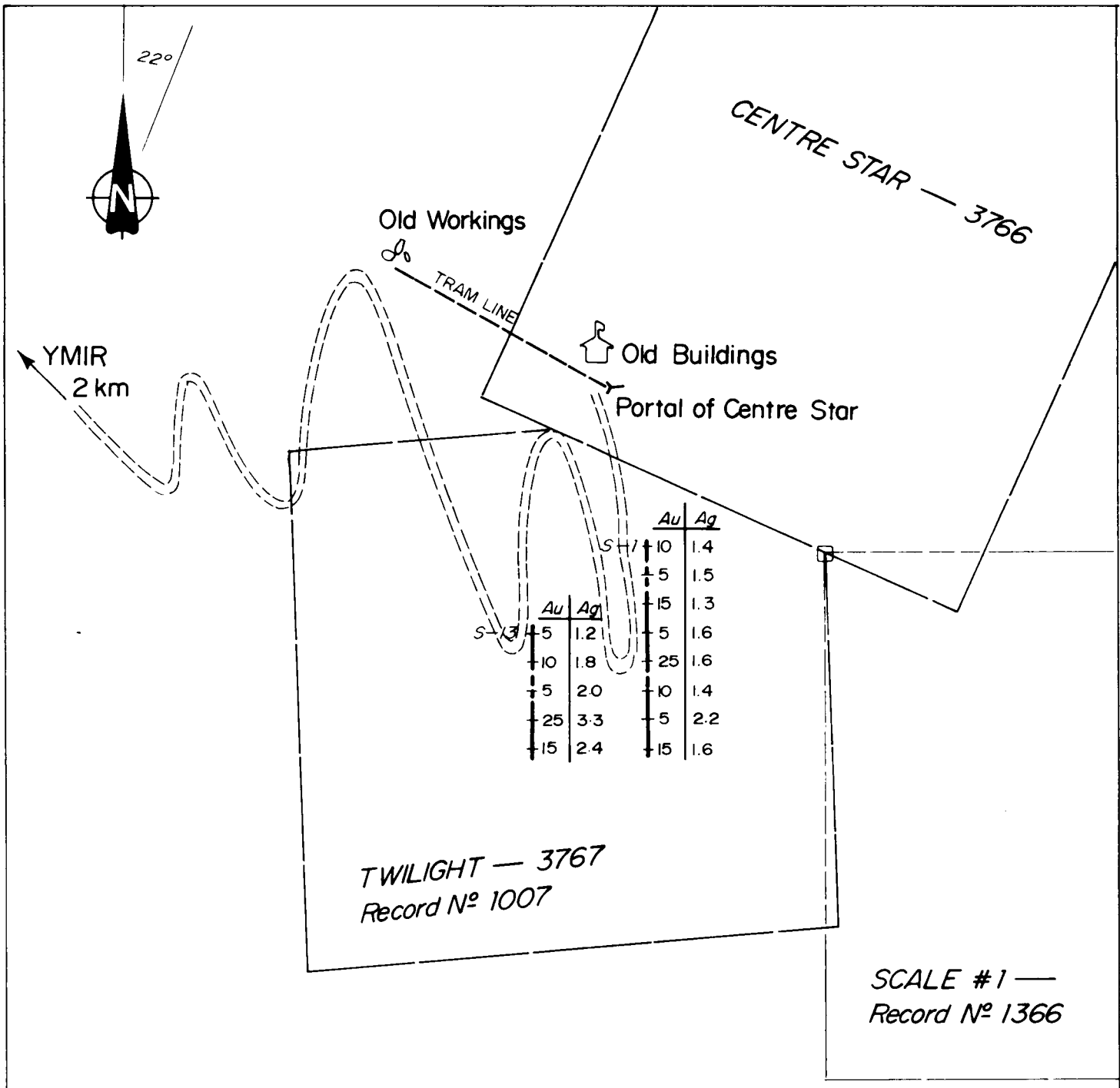
Although the Twilight, and several adjoining claims, appear on a claims map in Drysdale's 1917 Memoir 94, only the Nevada and Porcupine claims (both to the south) are mentioned in this group.

YMIR VENTURE

-9-

FIELD WORK

Access to the Twilight area of the Porcupine Group was via Centre Star (Wesko) Mine road. The Centre Star portal was located and two short lines were blazed and flagged due north-south using the portal as location point. Soil samples were collected every twenty-five metres and placed in kraft paper bags. Notes were made at each station with reference to; colour, depth, slope, and horizon. Samples were later delivered to Min-En Labs Ltd. of North Vancouver, B. C. where they were analyzed for lead, zinc and silver (in parts per million), gold (in parts per billion) and the data sheets form Appendix III of this report. Results are plotted in Figure 3.



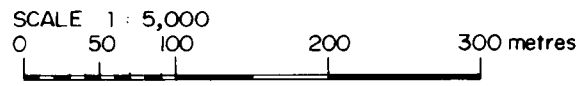
YMIR VENTURE



PORCUPINE GROUP · YMIR, B.C.

Geochemical Plan — Fig. 3
Au/p.p.b., Ag/p.p.m.

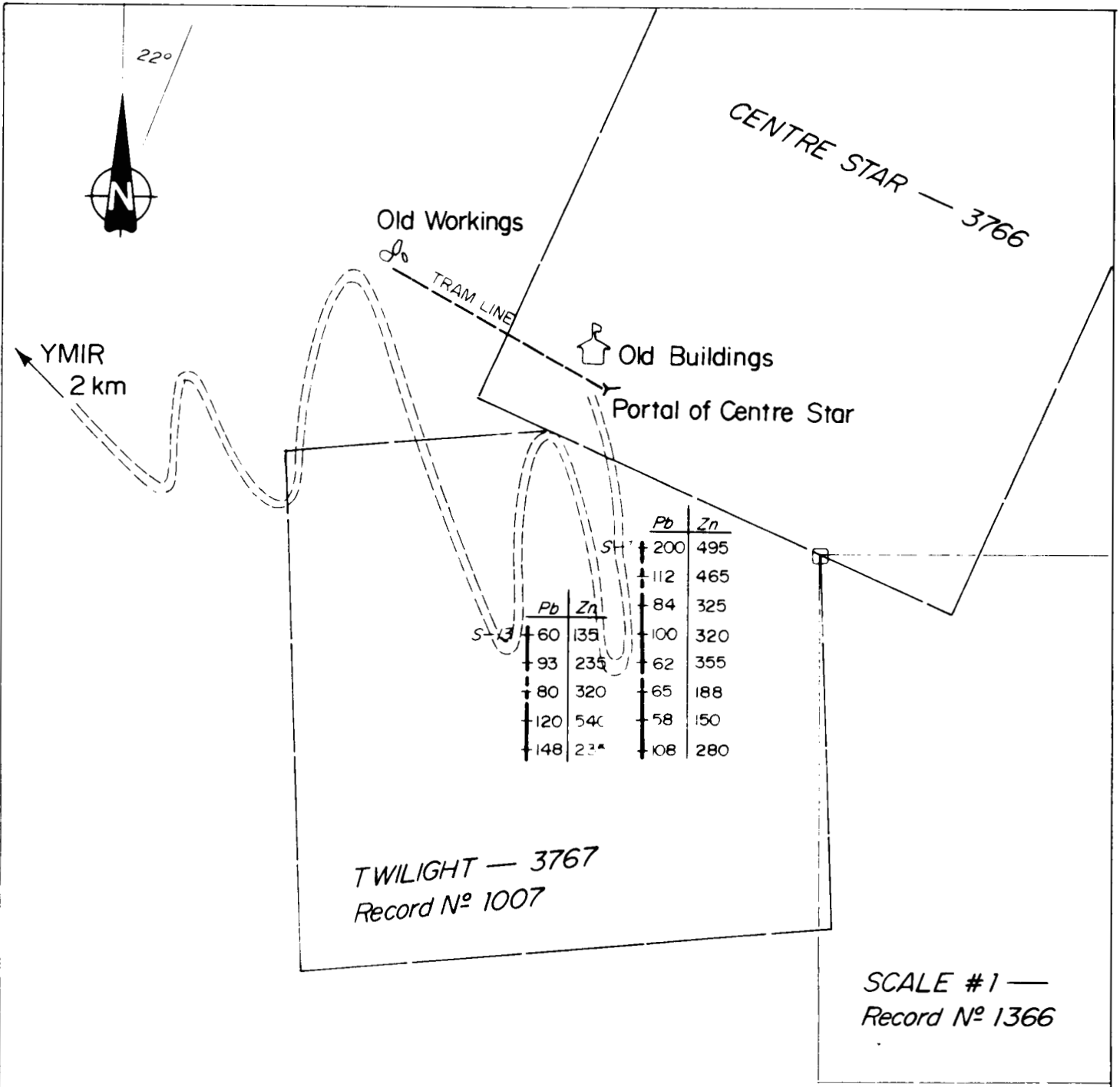
Nelson Mining Division N.T.S. 92F/3&6



March 1980 Project N^o 8080P
Field sketch by P.R.W. Traced P.K.C.



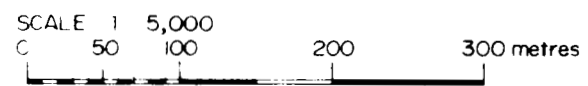
Cochrane Consultants Limited
4882 Delta St. Delta B.C. V4K 2T8 946-9221



YMIR VENTURE

PORCUPINE GROUP · YMIR, B.C.

Geochemical Plan — Fig. 4
Pb/pp.m., Zn/pp.m.
Nelson Mining Division N.T.S. 92F/3 & 6



March 1980 Project No 9050P
Field sketch by P.R.W. Traced P.K.C.

Cochrane Consultants Limited
4882 Delta St. Delta B.C. V4K 2T8 246 9271

YMIR VENTURE

-10-

DISCUSSION OF RESULTS

A total of 13 upper B soil horizon samples were collected from a poorly developed B horizon on the Twilight claim. The lead content ranged from a low of 58 parts per million (ppm) to a high of 200 ppm, and the arithmetic mean is 99 ppm. This average content is similar to results obtained earlier this year on the Blue Quartz claims situated immediately to the south and east. (See report on The Porcupine Group, dated September 20, 1979.)

The zinc content of the soils ranged from a low of 135 to a high of 540 ppm with the arithmetic mean at 311. This average value is, again, consistent with previous results, however no large departures (anomalies) from the averages were detected.

The silver content of the soils ranged from a low of 1.2 to a high of 3.3 ppm and the average is 1.8 ppm. Gold ranged from a low of 5 to a high of 25 parts per billion, somewhat higher

YMIR VENTURE

-11-

than the accepted average crustal abundance.

The limited geochemical orientation work on the Twilight Claim met with no success in locating anomalous samples. Gold, silver, lead and zinc averages are above accepted "normal" value and additional coverage is recommended in view of the proximity to several former producing properties.

Additional orientation work is warranted, with a bias to soil "profiling".

Respectfully submitted



D. R. Cochrane, P. Eng.

March 14, 1980,

Delta, B. C.

YMIR VENTURE

APPENDIX I

ASSESSMENT WORK DETAILS

P.R. Willson, November 9, 1979, one day	
at \$120/day	\$ 120.00
Helper, November 9, 1979, one day	
at \$80/day	80.00
Min-En Labs Ltd.	94.90
Food and Accommodation	32.67
Supplies	41.83
Four Wheel drive, one day at \$25/day	25.00
Fuel	16.67
Report Preparation, one quarter day	
at \$300/day	75.00
Drafting, 3 hours at \$19/hr	57.00
Typing, 3 hours at \$12/hr	36.00
Reproduction	<u>23.60</u>
Total	\$ 602.67

Cont'd..

YMIR VENTURE

ASSESSMENT WORK DISTRIBUTION

One year each to:	Twilight (Lot No. 3767)	\$ 100.00
	Nevada (Lot No. 3504)	100.00
	Sunrise (Lot No. 4385)	100.00
	Emerald (Lot No. 2907)	100.00
	Victor (Lot No. 2906)	100.00
	Porcupine (Lot No. 2908)	100.00
		<hr/>
Total		\$ 600.00
Total this report		<u>602.67</u>
Ymir Venture P.A.C. credit		2.67

YMIR VENTURE

APPENDIX II

CERTIFICATE

I, Donald Robert Cochrane, of the Municipality of Delta, British Columbia, do hereby certify that:

1. I am a consulting geological engineer with an office at 4882 Delta Street, Delta, B. C.
2. I am a graduate of the University of Toronto (1962) with a degree in Applied Geology (B.A.Sc.) and a graduate of Queen's University (1965) with a Master of Science Degree in Geological Sciences (Engineering).
3. I have practiced my profession continuously since graduation while being employed by such companies as Noranda Exploration Co. Ltd., Quebec Cartier Mines, and Meridian Explorations Syndicate. I have been in private independent practice since 1969.
4. I am a member in good standing of the Association of Professional Engineers (A.P.E.) of the Province of British Columbia, and also a member of the A.P.E. in the Province of Ontario, Saskatchewan, Alberta and the Yukon Territories.

D. R. Cochrane, P. Eng.,
March 14, 1980,
Delta, B. C.

YMIR VENTURE

APPENDIX III

GEOCHEMICAL CERTIFICATE

MIN-EN Laboratories Ltd.

705 WEST 15th STREET,
NORTH VANCOUVER, B.C., CANADA V7M 1T2
TELEPHONE (604) 980-5814

ANALYTICAL REPORT

Project "Y" Date of report Nov. 30/79.

File No. 9-876 Date samples received Nov. 28/79.

Samples submitted by:

Company: Cochrane Consultants

Report on: 13 soils Geochem samples

Assay samples

Copies sent to:

1. Cochrane Consultants, Delta, B.C.
- 2.
- 3.

Samples: Sieved to mesh -80 Ground to mesh

Prepared samples stored discarded

rejects stored discarded

Methods of analysis: Pb, Zn, Ag-nitric, perchloric digestion. A.A.

Analysis. Au-Aqua Regia. A.A. Analysis.

Remarks:

SPECIALISTS IN MINERAL ENVIRONMENTS

