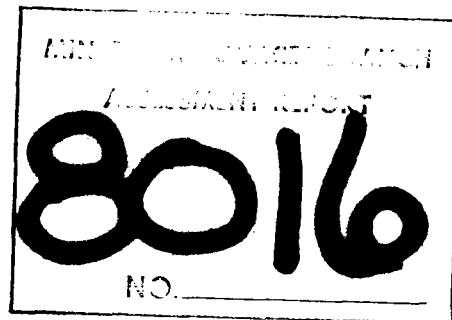


PERCUSSION DRILLING REPORT  
ON THE  
BJ MINERAL CLAIMS  
CARIBOO MINING DIVISION  
52° 30'N., 121° 35'W  
(923A/12E)  
HIGHLAND-CROW RESOURCES LTD.

BY: B. I. McCLYMONT, P. GEOL.  
November 9-13, 1979



Vancouver, B.C.

May 2, 1980

TABLE OF CONTENTS

Description of Work	Page 1
Cost Statement	Page 2
Certificate of Author	Page 3
Certificate of Analyses	Appendix A

Illustrations:

Figure I:	Index Map	1:250,000	Following Page 1
Figure II:	Surface Map	1:12,000	Map Pocket
Figure III:	Trench Sampling Location Plan	1:12,000	Map Pocket
Figure IV:	Claims Map		Map Pocket

PERCUSSION DRILLING REPORT ON THE  
BJ MINERAL CLAIMS, CARIBOO MINING DIVISION  
52°30'N., 121°35'W (92 A/12E)  
HIGHLAND-CROW RESOURCES LTD.

---

DESCRIPTION OF WORK

The first phase of the 1979 programme was to re-sample old trenches across the two known ore bodies to check for copper, silver, gold as testing in these trenches was not complete. The rock sampling was carried out by G. Lovang of Teck Explorations on September 12 - 17, 1979 inclusive. Ore samples were shipped to Bondar-Clegg in Vancouver for assay. The claims tested were: BJ 7, BJ 19, FR-BJ 2, BJ 21, BJ 24, FR-BJ 1. Results are appended with this report.

During the period November 9 - 13, 1980 six percussion drill holes totalling 1750' (533.4 metres) were drilled on BJ Mineral Claims: BJ 7, BJ 21, BJ 19, FR-BJ 2 (see Figure 2). The drilling was performed by Tonto Drilling out of Kamloops, B.C. Drill cuttings were collected and split with a 1/8 sample for assay and 7/8 sample for metallurgical testing for each 10 foot interval of bedrock drilled. The drilling was supervised by the author. The 1/8 split samples were sent to Chemex Labs in Vancouver for copper, gold, silver assay. The 7/8 splits were sent to Lakefield Research in Ontario.

---

B. I. McClymont, P. Geol.  
May 2, 1980

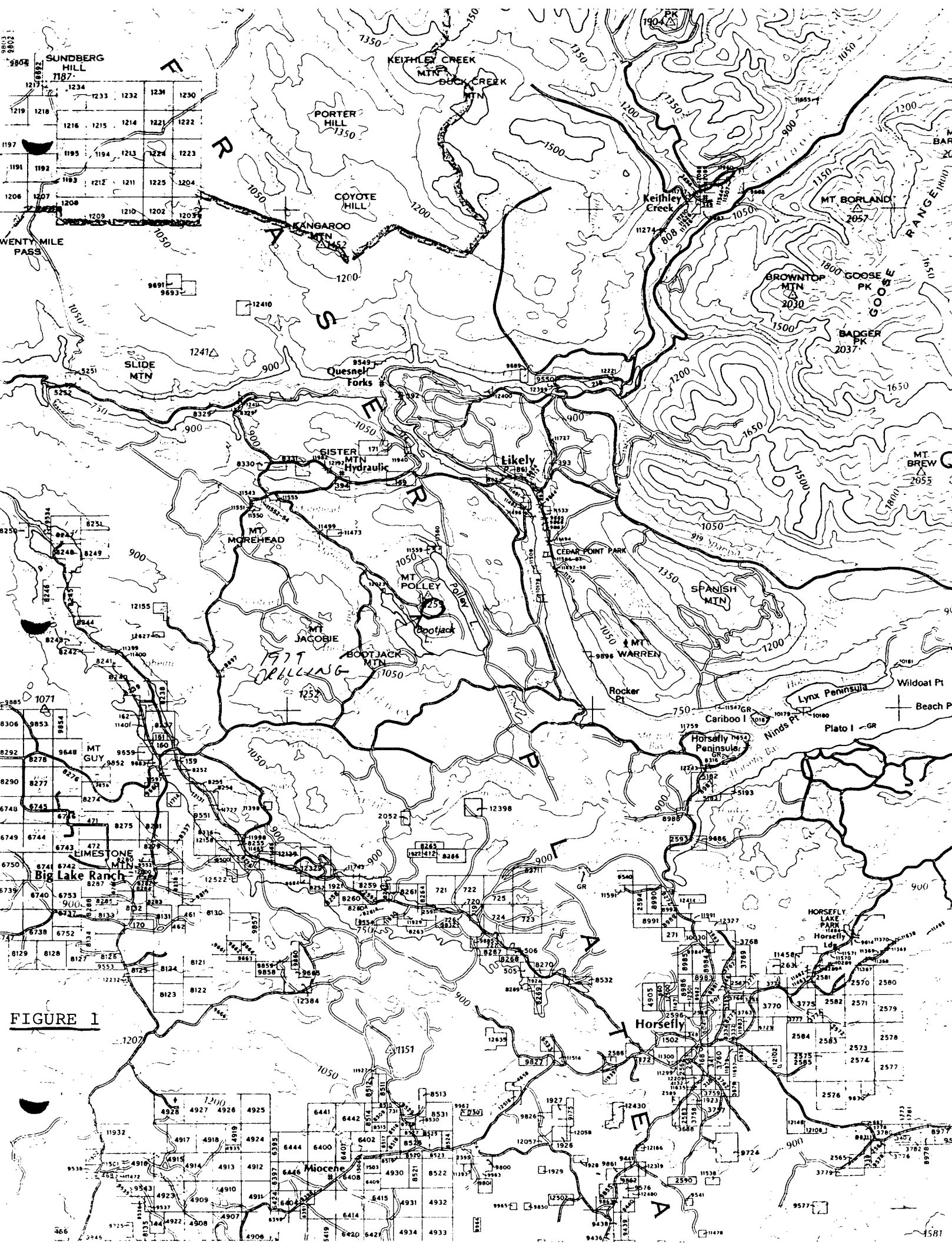


FIGURE 1

COST STATEMENT

Geological Salaries

Field Work

G. Lovang, Prospector  
September 12-17, 1979

B. McClymont, Project Geologist  
November 8-15, 1979

R. Snider, Assistant  
November 8-15, 1979

\$ 3,571.00

Percussion Drilling

1,750' at \$5.00/ft. plus water truck, etc.

\$11,146.48

Meals and Accommodation

Meals \$174.95

Accommodations (Moorehead Lake Resort) \$478.71 \$ 653.66

Transportation

4 X 4 Truck \$ 150.00

Shipping \$ 140.81

Analysis

Chemex Labs \$ 2,955.60

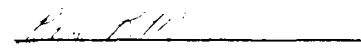
Report Preparation

B. McClymont  
2 days at \$125/day \$ 250.00

---

\$18,867.55

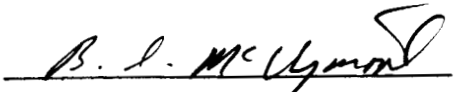
I hereby certify that the costs described above are all directly applicable for assessment work.

  
B. I. McClymont, P. Geol.  
May 2, 1980

CERTIFICATE

I, Bruce I. McClymont, do hereby certify that:

1. I am a geologist employed by Teck Corporation and reside at 3145 West 16th Avenue in Vancouver, B.C.
2. I am a graduate of the University of Alberta with a B.Sc. in Geology.
3. I am a professional geologist registered in the Province of Alberta.
4. I have practiced my profession continuously for the past 6 years and since 1976 in B.C.
5. I was engaged in the performing of the percussion drill programme on the BJ claims on behalf of Highland Crow Resources Ltd.

  
B. I. McClymont, P. Geol.  
May 2, 1980

BIM/rm

CERTIFICATE

I, Andris I. Betmanis, do hereby certify that:

I am a geologist residing at 1988 Arroyo Court, North Vancouver, B. C., and employed by Teck Explorations Ltd.;

I am a graduate of the University of Toronto with a B.A.Sc. degree in Applied Geology;

I am a registered member of the Association of Professional Engineers of the Province of British Columbia;

I have practiced my profession in geology continuously since 1965, and since 1970 in British Columbia;

I endorse the work performed under the direction of B. I. McClymont on the BJ claims between November 9-13, 1979.



---

A. I. Betmanis, P.Eng.  
May 2, 1980.

APPENDIX A





# CHEMEX LABS LTD.

212 BROOKSBANK AVE.  
 NORTH VANCOUVER, B.C.  
 CANADA V7J 2C1  
 TELEPHONE: 985-0648  
 AREA CODE: 604  
 TELEX: 043-52597

• ANALYTICAL CHEMISTS • GEOCHEMISTS • REGISTERED ASSAYERS

## CERTIFICATE OF ASSAY

TO: Teck Corporation Ltd.,  
 14th flr. 1199 W. Hastings St.  
 Vancouver, B. C.

ATTN: Jane Brandt

*% or. l.*

CERTIFICATE NO. 67038  
 INVOICE NO. 34142  
 RECEIVED Nov 15/79  
 ANALYSED Dec. 3/79

SAMPLE NO. :	% Cu		% (Leach Oxide) Cu		Oz/Ton Ag	Oz/Ton Au
CB 79-1 0-10	.20	0.15	.04	0.11	73	0.01 < 0.003
10-20	.15	0.18	.05	0.13	72	0.01 0.006
20-30	.22	0.20	.06	0.14	70	< 0.01 0.005
30-40	.22	0.19	.05	0.14	74	< 0.01 0.005
40-50	.20	0.17	.04	0.13	76	0.01 0.008
50-60	.20	0.24	.07	0.17	71	0.01 0.008
60-70	.30	0.17	.05	0.12	71	< 0.01 0.008
70-80	.21	0.28	.07	0.21	75	< 0.01 0.010
80-90	.40	0.13	.04	0.09	70	0.01 0.006
90-100	.21	0.05	.02	0.03	60	0.01 < 0.003
100-110	.16	0.04	.02	0.02	50	0.01 < 0.003
110-120	.02	0.04	.02	0.02	50	0.01 < 0.003
120-130	.30	0.03	.02	0.01	23	0.01 < 0.003
130-140	.50	0.03	.01	0.02	66	0.01 < 0.003
140-150	.53	0.14	.04	0.10	67	< 0.01 0.014
150-160	.54	0.10	.02	0.07	70	0.01 0.003
160-170	.62	0.07	.02	0.05	71	0.01 < 0.003
170-180	.39	0.29	.05	0.24	83	0.01 0.010
180-190	.52	0.34	.06	0.28	92	< 0.01 0.008
190-200	.33	0.41	.09	0.33	90	< 0.01 0.019
200-210	.22	0.36	.12	0.24	66	< 0.01 0.014
210-220	.22	0.33	.12	0.21	64	< 0.01 0.017
220-230	.45	0.28	.17	0.11	40	< 0.01 0.014
230-240	.33	0.30	.09	0.21	70	< 0.01 0.014
240-250	.55	0.36	.09	0.27	75	< 0.01 0.018
250-260	.22	0.54	.20	0.34	63	0.01 0.028
260-270	.45	0.46	.13	0.33	72	0.01 0.028
270-280	.25	0.47	.05	0.39	53	< 0.01 0.033
280-290	.22	0.38	.09	0.29	70	< 0.01 0.022
79-1 290-300	.21	0.27	.10	0.17	62	0.01 0.016
CB 79-2 0-10	.47	0.39	.12	0.26	60	0.04 0.027
10-20	.62	0.52	.21	0.31	60	0.03 0.040
20-30	.82	0.54	.19	0.35	65	0.06 0.074
39-40	.42	0.35	.06	0.29	52	0.13 0.076
40-50	.44	0.35	.10	0.23	60	0.07 0.142
50-60	.30	0.24	.14	0.10	40	0.09 0.231
60-70	.72	0.38	.10	0.28	72	0.06 0.084
70-80	.79	0.72	.17	0.55	70	0.04 0.090
80-90	.85	0.65	.19	0.46	70	0.03 0.086
CB 79-2 90-100	.42	0.59	.20	0.39	66	0.03 0.056

*sluice  
analyzed*

*.021/100' 8 p. 61  
32 cu.*

*.0906  
170'  
.07 C  
11-25*



MEMBER  
 CANADIAN TESTING  
 ASSOCIATION

*B. L. Swaites*

REGISTERED ASSAYER, PROVINCE OF BRITISH COLUMBIA



# CHEMEX LABS LTD.

212 BROOKSBANK AVE.  
 NORTH VANCOUVER, B.C.  
 CANADA V7J 2C1  
 TELEPHONE: ~~604-525-9700~~ 954-0221  
 AREA CODE: 604  
 TELEX: 043-52597

• ANALYTICAL CHEMISTS • GEOCHEMISTS • REGISTERED ASSAYERS

## CERTIFICATE OF ASSAY

TO: Teck Corporation Ltd.  
 14th flr. 1199 W. Hastings St.  
 Vancouver, B.C.  
 V6E 2K5  
 ATTN: Jane Brandt

CERTIFICATE NO. 67039  
 INVOICE NO. 34142  
 RECEIVED Nov. 15/79  
 ANALYSED Dec. 3/79

SAMPLE NO. :	91-111		Tot. Cu. BDN		Tot. PERCENTS		% oxide		oz/ton Au	oz/ton Ag	%
	% Cu	% Cu	(oxide leach)								
CB-79-2 100-110	1.61	0.35	.13	0.22	63	0.07	0.038				
110-120	.72	0.36	.11	0.25	69	0.04	0.042				
120-130	2.24	0.46	.19	0.27	59	0.04	0.046				
130-140	.79	0.57	.14	0.43	75	0.04	0.036				
140-150	.38	0.46	.16	0.30	66	0.04	0.034				
150-160	.42	0.33	.13	0.20	61	0.04	0.030				
160-170	.37	0.29	.14	0.15	51	0.03	0.016				
170-180	.26	0.28	.14	0.14	50	0.04	0.020				
180-190	.28	0.21	.11	0.10	50	0.04	0.014				
190-200	.33	0.28	.15	0.13	46	0.04	0.023				
200-210	.18	0.21	.12	0.09	43	0.04	0.022				
210-220	.12	0.12	.07	0.05	42	0.04	0.024				
220-230	.12	0.11	.05	0.06	54	0.04	0.022				
230-240	.14	0.10	.04	0.06	60	0.06	0.012				
240-250	.72	0.11	.06	0.05	51	0.04	0.010				
250-260	.66	0.15	.09	0.06	40	0.04	0.012				
260-270	.27	0.23	.11	0.12	52	0.04	0.016				
270-280	.19	0.25	.12	0.13	52	0.04	0.066				
280-290	.12	0.23	.14	0.09	39	0.04	0.018				
CB-79-2 290-300	.18	0.20	.11	0.09	45	0.03	0.014				
CB-79-3 0-10	0.12	.63	0.09	75	0.03	0.008					
10-20	0.26	.07	0.19	73	0.04	0.017					
20-30	0.10	.03	0.07	70	0.03	0.006					
30-40	0.10	.05	0.05	50	0.03	0.003					
40-50	0.09	.04	0.05	55	0.03	0.005					
50-60	0.12	.07	0.05	42	0.04	0.005					
60-70	0.17	.07	0.10	59	0.04	0.006					
70-80	0.22	.13	0.09	41	0.03	0.006					
80-90	0.61	.46	0.15	25	0.04	0.025					
90-100	0.77	.71	0.07	9	0.07	0.027					
100-110	0.70	.65	0.05	7	0.06	0.026					
110-120	0.43	.39	0.04	9	0.04	0.020					
120-130	0.19	.17	0.02	10	0.03	0.008					
130-140	0.52	.48	0.04	7	0.06	0.084					
140-150	0.50	.47	0.03	6	0.04	0.030					
150-160	0.21	.20	0.01	5	0.03	0.004					
160-170	0.24	.22	0.02	5	0.03	0.016					
170-180	0.35	.33	0.02	6	0.04	0.024					
180-190	0.44	.42	0.02	5	0.04	0.034					
CB-79-3 190-200	0.11	.10	< 0.01	< 10	0.03	0.006					



MEMBER  
 CANADIAN TESTING  
 ASSOCIATION

REGISTERED ASSAYER, PROVINCE OF BRITISH COLUMBIA

*R. Swaine*



# CHEMEX LABS LTD.

212 BROOKSBANK AVE.  
 NORTH VANCOUVER, B.C.  
 CANADA V7J 2C1  
 TELEPHONE: 984-2221 984-0221  
 AREA CODE: 604  
 TELEX: 043-52597

• ANALYTICAL CHEMISTS • GEOCHEMISTS • REGISTERED ASSAYERS

## CERTIFICATE OF ASSAY

CERTIFICATE NO. 67040

TO: Teck Corporation Ltd.,  
 14th flr. 1199 W. Hastings St.,  
 Vancouver, 1, B.C.  
 V6E 2K5

INVOICE NO. 34199

RECEIVED Nov. 15/79

ATTN:

ANALYSED Dec. 5/79

SAMPLE NO. :	% Cu	% Cu (Oxideleach)	% oxide	Oz/ton Ag	Oz/Ton Au	
CB-79-3 200-210	0.16	.15	0.01	6	0.03	0.006
210-220	0.87	.85	0.02	2	0.04	0.042
220-230	0.22	.21	0.01	5	0.03	0.012
230-240	0.10	.09	< 0.01	10	0.03	< 0.003
240-250	0.50	.48	0.02	4	0.06	0.038
250-260	0.26	.25	< 0.01	4	0.03	0.034
260-270	0.13	.12	< 0.01	7	0.03	0.008
270-280	0.16	.15	< 0.01	6	0.03	0.044
280-290	0.52	.50	0.02	4	0.07	0.042
CB-79-3 290-300	0.29	.28	0.01	3	0.04	0.026
CB-79-4 0-10	.40 0.30	.08	0.22	72	0.03	0.006
10-20	.31 0.35	.08	0.27	77	0.03	0.007
20-30	.08 0.31	.06	0.25	80	0.03	0.005
30-40	.34 0.29	.08	0.21	72	0.03	0.006
40-50	.34 0.28	.07	0.21	75	0.03	0.008
50-60	.36 0.29	.06	0.23	79	0.04	0.012
60-70	.25 0.32	.05	0.27	84	0.03	0.008
70-80	.07 0.14	.05	0.09	64	0.03	0.003
80-90	.01 0.30	.07	0.23	77	0.03	0.006
90-100	.04 0.54	.06	0.48	88	0.04	0.013
100-110	.57 0.39	.10	0.29	74	0.03	0.010
110-120	.38 0.28	.08	0.20	71	0.01	0.004
120-130	.31 0.30	.07	0.23	77	0.01	0.009
130-140	.15 0.16	.06	0.10	63	0.03	0.010
140-150	.25 0.12	.05	0.07	58	0.04	< 0.003
150-160	.35 0.09	.04	0.05	55	0.03	< 0.003
160-170	.22 0.13	.06	0.07	54	0.03	0.003
170-180	.22 0.19	.06	0.13	62	0.03	0.014
180-190	.22 0.36	.13	0.23	64	0.03	0.019
190-200	.07 0.21	.03	0.13	62	0.04	0.010
200-210	.30 0.29	.11	0.18	62	0.03	0.008
210-220	.05 0.34	.22	0.12	35	0.03	0.010
220-230	.37 0.38	.22	0.16	42	0.03	0.014
230-240	.37 0.31	.12	0.19	61	0.01	0.008
CB-79-4 240-250	.09 0.44	.24	0.20	45	0.03	0.012
CB-79-5 0-10	0.12	.08	0.04	32	0.03	0.020
10-20	0.13	.09	0.04	31	0.03	0.013
20-30	0.18	.11	0.07	29	0.01	0.004
30-40	0.56	.43	0.13	22	0.04	0.005
CB-79-5 40-50	0.34	.28	0.06	18	0.04	0.003



MEMBER  
 CANADIAN TESTING  
 ASSOCIATION

*B. J. Swaiter*  
 REGISTERED ASSAYER, PROVINCE OF BRITISH COLUMBIA



# CHEMEX LABS LTD.

212 BROOKSBANK AVE.  
 NORTH VANCOUVER, B.C.  
 CANADA V7J 2C1  
 TELEPHONE: 989-3646 984-0221  
 AREA CODE: 604  
 TELEX: 043-52597

• ANALYTICAL CHEMISTS • GEOCHEMISTS • REGISTERED ASSAYERS

## CERTIFICATE OF ASSAY

CERTIFICATE NO. 67041

TO: Teck Corporation Ltd.  
 14th Flr. 1199 W. Hastings St.  
 Vancouver, B.C.  
 ATTN: V6E 2K5

INVOICE NO. 34204  
 RECEIVED Nov. 15/79  
 ANALYSED Dec. 5/79

SAMPLE NO. :	% Cu		% Cu oxide leach		oz/ton Ag	oz/ton Au
	Cu		oxide	leach	Ag	Au
CB 79-5 50-60	0.49	.45	0.04	8	0.06	0.008
60-70	0.52	.49	0.03	6	0.06	0.006
70-80	0.39	.37	0.02	5	0.04	0.006
*80-90	0.31	.29	0.02	6	0.04	0.004
100-110	0.20	.19	0.01	5	0.04	< 0.003
110-120	0.20	.19	< 0.01	< 5	0.04	< 0.003
120-130	0.13	.12	< 0.01	< 7	0.04	0.003
130-140	0.12	.11	< 0.01	< 8	0.04	0.005
140-150	0.08	.07	< 0.01	< 10	0.03	0.004
150-160	0.09	.08	< 0.01	< 11	0.04	0.005
160-170	0.07	.06	< 0.01	< 14	0.04	0.003
170-180	0.06	.05	0.01	16	0.03	0.003
180-190	0.09	.08	< 0.01	12	0.04	0.004
190-200	0.21	.20	< 0.01	5	0.06	0.010
200-210	0.18	.17	< 0.01	6	0.06	0.005
210-220	0.08	.07	< 0.01	12	0.04	0.003
220-230	0.09	.08	< 0.01	12	0.04	0.003
230-240	0.07	.06	< 0.01	14	0.03	0.003
240-250	0.06	.05	< 0.01	16	0.03	< 0.003
250-260	0.06	.05	< 0.01	16	0.04	0.003
260-270	0.08	.07	< 0.01	12	0.03	0.004
270-280	0.09	.08	< 0.01	12	0.04	0.004
280-290	0.06	.05	< 0.01	16	0.03	0.003
CB 79-5 290-300	0.06	.05	< 0.01	16	0.04	0.004
CB 79-6 20-30	0.07	.04	0.03	43	0.03	0.016
30-40	0.08	.05	0.03	37	0.03	0.006
40-50	0.08	.05	0.03	37	0.03	0.010
50-60	0.11	.05	0.03	27	0.04	0.010
60-70	0.05	.04	0.01	20	NSS	0.006
70-80	0.08	.07	< 0.01	12	0.03	0.004
80-90	0.18	.17	0.01	5	0.03	0.010
90-100	0.23	.22	0.01	4	0.04	0.010
100-110	0.31	.30	0.01	3	0.06	0.010
110-120	0.27	.26	< 0.01	4	0.06	0.008
120-130	0.29	.27	0.02	6	0.04	0.010
130-140	0.33	.25	0.08	24	0.06	0.012
140-150	0.31	.27	0.04	12	0.06	0.008
150-160	0.33	.32	0.01	3	0.06	0.014
160-170	0.40	.37	0.03	7	0.07	0.020
CB 79-6 170-180	0.58	.57	0.07	12	0.07	0.018
CB 79-5 90-100	0.24	.23	0.01	4	0.03	0.004



MEMBER  
 CANADIAN TESTING  
 ASSOCIATION

*R. Swait*  
 REGISTERED ASSAYER, PROVINCE OF BRITISH COLUMBIA



# CHEMEX LABS LTD.

212 BROOKSBANK AVE.  
 NORTH VANCOUVER, B.C.  
 CANADA V7J 2C1  
 TELEPHONE: 984-0221  
 AREA CODE: 604  
 TELEX: 043-52597

• ANALYTICAL CHEMISTS • GEOCHEMISTS • REGISTERED ASSAYERS

## CERTIFICATE OF ASSAY

CERTIFICATE NO. 67042

TO: Teck Corporation Ltd.  
 14th flr. 1199 W. Hastings St.  
 Vancouver, B.C.

INVOICE NO. 34211

RECEIVED Nov. 15/79

ATTN: Jane Brandt

ANALYSED Dec. 7/79

SAMPLE NO. :	% Cu	% Cu oxide leach	% Cu oxide	oz/ton Ag	oz/ton Au
CB-79-6 180-190	0.39	.32	0.07	18	0.03
190-200	0.40	.33	0.07	18	0.03
200-210	0.51	.48	0.03	6	0.04
210-220	0.67	.64	0.03	4	0.06
220-230	0.35	.33	0.02	6	0.04
230-240	0.28	.27 <	0.01	3	0.03
240-250	0.33	.32	0.01	3	0.04
250-260	0.27	.26	0.01	4	0.04
260-270	0.29	.26	0.03	10	0.04
270-280	0.38	.36	0.02	5	0.04
280-290	0.48	.46	0.02	4	0.04
CB-79-6 290-300	0.32	.31 <	0.01	3	0.03



MEMBER  
 CANADIAN TESTING  
 ASSOCIATION

*B. Swaine*

REGISTERED ASSAYER, PROVINCE OF BRITISH COLUMBIA

1199 West Hastings Street  
Vancouver, B.C.  
V6E 2K5

CERTIFICATE OF ASSAY

Samples submitted: September 19, 1979  
Results completed: October 9, 1979  
PROJECT: 1004

I hereby certify that the following are the results of assays made by us upon the herein described ore samples.

MARKED	GOLD		SILVER		Cu							
	Ounces per Ton	Grams per Metric Ton	Ounces per Ton	Grams per Metric Ton	Percent	Percent	Percent	Percent	Percent	Percent	Percent	Percent
7577	0.020		0.11		0.24							
7609	0.025		0.03		0.38							
7610	0.024		0.04		0.34							
7611	0.017		0.02		0.18							
7612	0.010		0.03		0.32							
7613	0.011		0.04		0.27							
7614	0.023		0.04		0.30							
7615	0.009		0.03		0.21							
7616	0.014		0.02		0.18							
7617	0.008		0.04		0.25							
7618	0.010		0.02		0.16							
7619	0.018		0.03		0.37							
7620	0.011		0.02		0.22							
7621	0.029		0.04		0.68							
7622	0.006		0.02		0.17							
7623	0.016		0.05		0.37							
7624	0.030		0.06		0.45							
7625	0.024		0.04		0.38							
16135A	0.006		0.02		0.12							
16136A	0.006		0.03		0.07							
16137A	0.009		0.02		0.24							
16138A	0.005		0.03		0.19							
16139A	0.004		0.03		0.20							
16140A	0.002		0.03		0.20							
16141A	0.007		0.04		0.34							

*Cariboo - All*

NOTE:  
Rejects retained three weeks  
Pulps retained three months  
unless otherwise arranged.


**CERTIFICATE OF ASSAY**

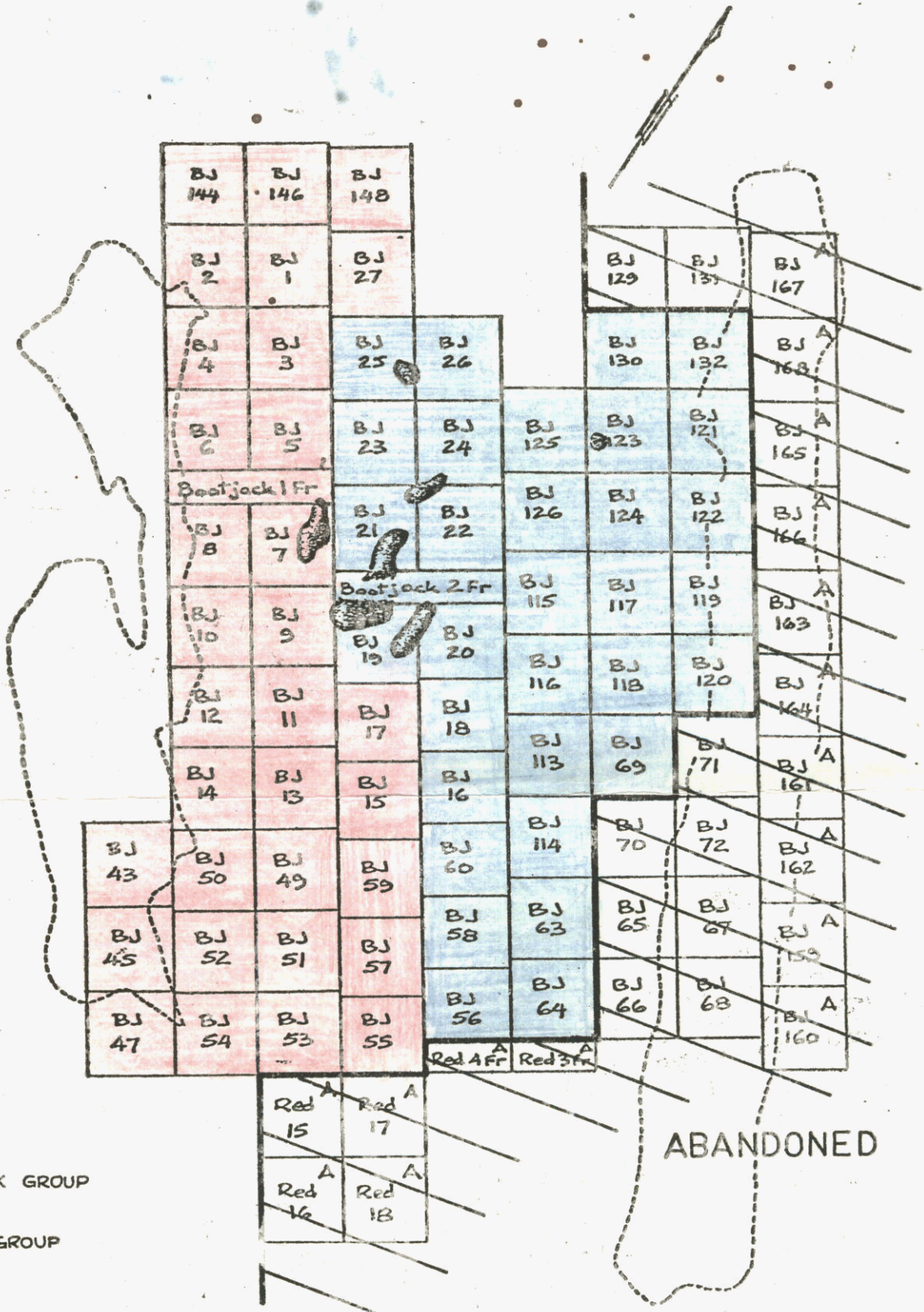
I hereby certify that the following are the results of assays made by us upon the herein described ores sample


MARKED	GOLD		SILVER		Cu						
	Ounces per Ton	Grams per Metric Ton	Ounces per Ton	Grams per Metric Ton	Percent	Percent	Percent	Percent	Percent	Percent	Percent
16142A	0.005		0.07		0.15						
16143A	0.003		0.02		0.16						
16144A	0.008		0.02		0.24						
16145A	0.009		0.06		0.31						
16146A	0.007		0.05		0.19						
16147A	0.002		0.03		0.07						
16148A	0.010		0.03		0.31						
16149A	0.010		0.02		0.05						
16150A	0.017		0.04		0.34						

cc Mr. B. Lovang

NOTE:  
 Rejects retained three weeks  
 Pulps retained three months  
 unless otherwise arranged.

Registered Assayer, Province of British Columbia 



 BOOTJACK GROUP  
 POLLEY GROUP

 Known Mineralized Zone

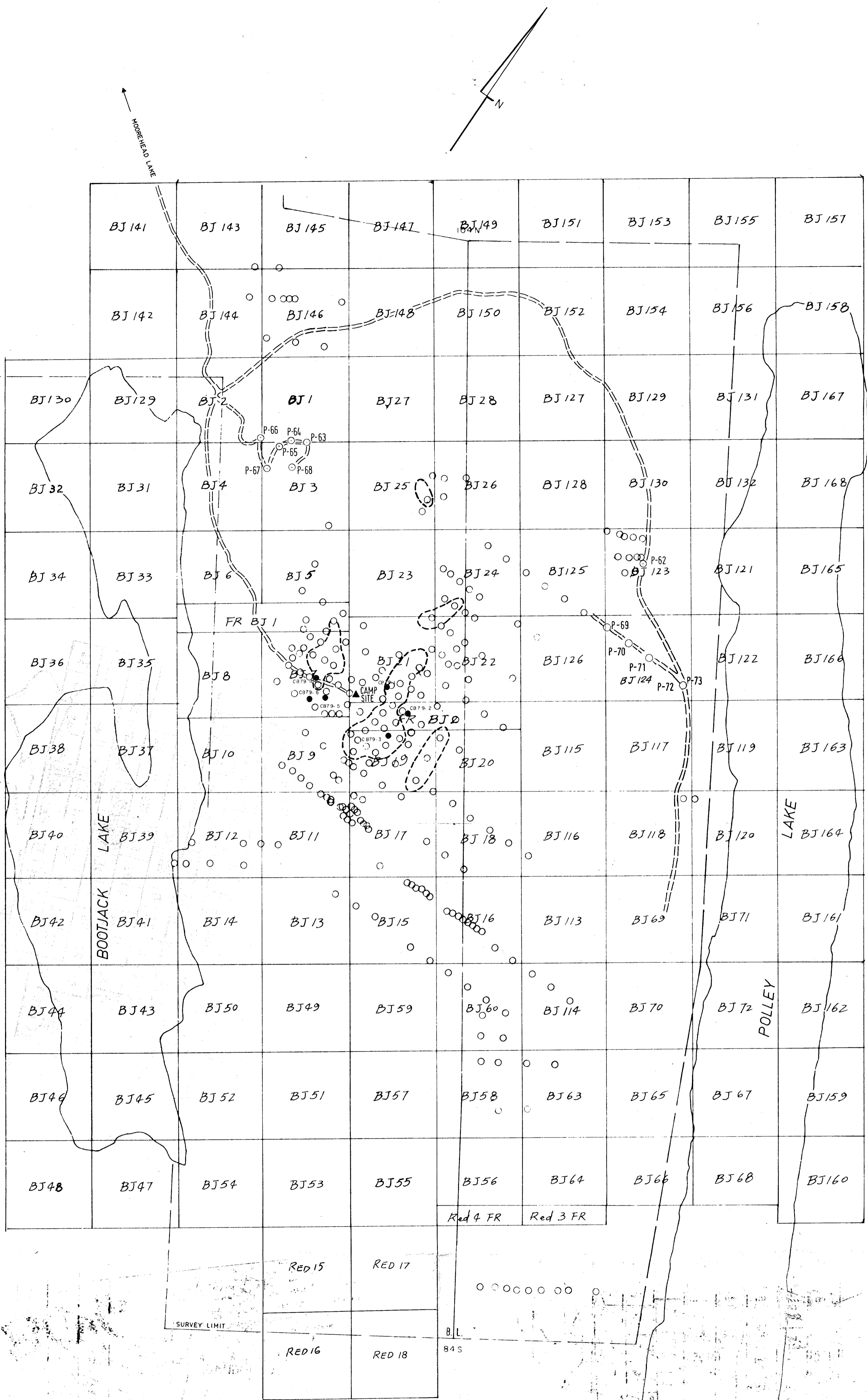
FIGURE IV

MINERAL RESOURCES BRANCH  
 ASSESSMENT REPORT  
**80%**  
 NO.

HIGHLAND CROW RESOURCES LTD  
 CARIBOO - BELL  
 COPPER MINES LTD  
 Quesnel District, B.C.

1500' 0 1500 3000'  
 Scale ±  
 MAY 1980





**LEGEND**

- PREVIOUS DRILLHOLES
- 1979 PERCUSSION DRILLHOLES
- KNOWN MINERALIZED ZONES (≥ .30% Cu)
- ACCESS ROAD

MINERAL RESOURCES BRANCH  
ASSESSMENT REPORT  
**8016**  
NO.

JOB NO. 1004

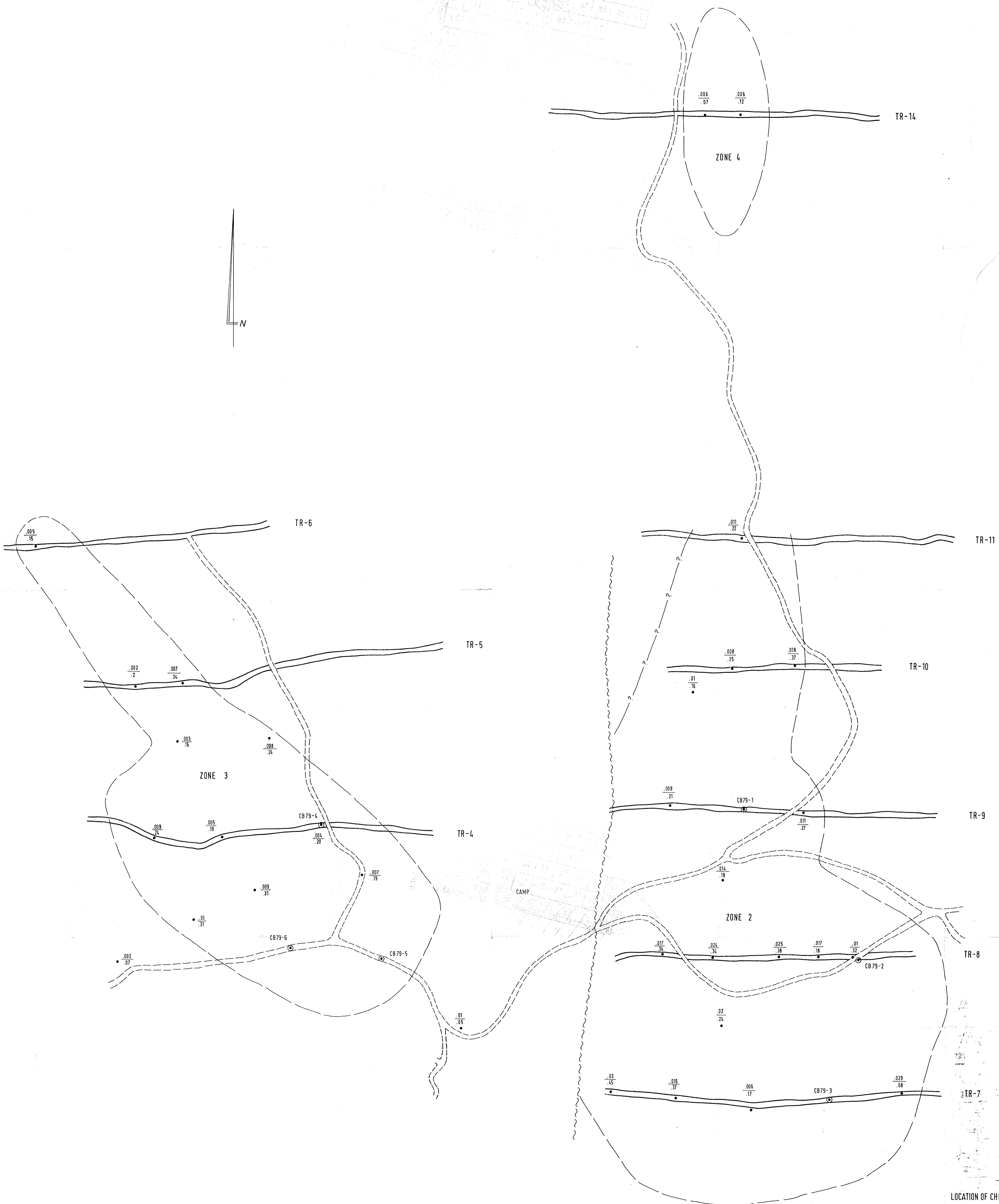
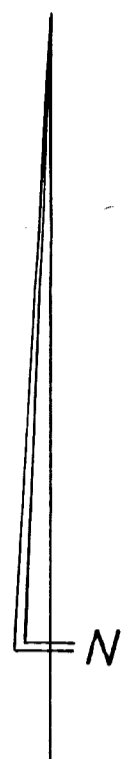
HIGHLAND-CROW-RESOURCES LTD.  
VANCOUVER, B.C.

CARIBOO-BELL PROPERTY  
1979 PERCUSSION DRILLHOLES

FIGURE II

Scale: 1:12000  
(1" = 1000')

NOV. 1979 93A/13



MINERAL RESOURCES BRANCH  
ADMINISTRATIVE DIVISION  
**8016**  
110

CARIBOO BELL

LOCATION OF CHIP SAMPLES AND PERCUSSION DRILL HOLES  
ON ORE ZONES 2,3,4.

SCALE 1"=100 ft

JOB NO. 1004

NOVEMBER 1939

100 ft

$\frac{017}{.45} = \frac{AH}{CV}$