

COMINCO LTD.

EXPLORATION
NTS: 104N/11W

WESTERN DISTRICT

DRILLING REPORT ON THE

PER AND EYE CLAIMS

ATLIN MINING DIVISION

LATITUDE: 59°42'N; LONGITUDE: 133°18'W

OWNED BY COMINCO LTD.

WORK PERFORMED: JULY 30, 1979 TO AUGUST 8, 1979

MINERAL RESOURCES BRANCH ASSESSMENT REPORT 8049 NO. _____

MAY 6, 1980

B.M. MIODUSZEWSKA

TABLE OF CONTENTS

INTRODUCTION. 1
DRILLING. 1
ASSAYS. 1
CONCLUSIONS 1

LIST OF ATTACHMENTS

PLATE 1	LOCATION MAP	SCALE: 1:250,000
PLATE 2	LOCATION MAP DDH's	1: 12,000
PLATE 3	CROSS-SECTION DDH PER #1	1:5
PLATE 4	CROSS-SECTION DDH PER #2	1:5
PLATE 5	CROSS-SECTION DDH PER #3	1:5
DRILL HOLE RECORD DDH PER #1		
DRILL HOLE RECORD DDH PER #2		
DRILL HOLE RECORD DDH PER #3		
APPENDIX "A" STATEMENT OF EXPENDITURES		
APPENDIX "B" STATEMENT		
APPENDIX "C" STATEMENT OF QUALIFICATIONS		

COMINCO LTD.

EXPLORATION
NTS: 104N/11W

WESTERN DISTRICT
7 MAY 1980

DRILLING REPORT ON THE
PER AND EYE CLAIMS
ATLIN MINING DIVISION

INTRODUCTION

The Per and Eye claims are approximately 40 km ENE of Atlin, on the east side of Ruby Creek. The Pereye property is in the Yukon Plateau of the Interior system physiographic subdivision

The Per and Eye claims were staked by Cominco and recorded on June 8, 1978.

They are owned by Cominco Ltd. Geological mapping, soil and limited rock sampling were carried out in 1978, and the results were submitted in an assessment report.

DRILLING

A diamond drilling program was carried out on the Pereye property from July 30, 1979 to August 8, 1979. Three holes for a total of 83.5 metres were drilled on the Per claim of the Pereye property. One hole was lost in overburden and two holes intersected alaskite immediately below the overburden. Drill hole records of DDH's Per #1, Per #2 and Per #3 are attached. *Core is at drill site*

ASSAYS

Some of the alaskite core was sampled and assayed. Values of uranium that are present in the alaskite can be considered to be background.

<u>Drill Hole</u>	<u>Depth (metres)</u>	<u>U (ppm)</u>
PER #1	11.59 - 13.11	24.0
PER #1	13.11 - 14.63	10.0
PER #3	12.20 - 13.72	1.4
PER #3	37.50 - 39.02	13.0
PER #3	39.02 - 40.55	19.0
PER #3	40.55 - 42.07	15.0

CONCLUSIONS

The three holes drilled did not give any encouragement. No unconsolidated Tertiary sediments are present, nor is there any basalt. The

Pereye property is topographically above the level of Ruby Creek, therefore it is not expected that any of the valley basalts or underlying gravels present in Ruby Creek be found on the property.

Report by: Barbara Mioduszezka
B.M. Mioduszezka
Geologist

Endorsed by: R.Y. Watanabe
R.Y. Watanabe
Senior Geologist

Approved for
Release by: M.J. Malfe
G. Harden, Manager
Exploration
Western District

BMM/gmk

List of Attachments:

Plate 1:	Location Map	Scale 1:250,000
Plate 2:	Location Map DDH's	1: 12,000
Plate 3:	Cross-Section DDH PER #1	1:5
Plate 4:	Cross-Section DDH PER #2	1:5
Plate 5:	Cross-Section DDH PER #3	1:5
Drill Hole Record	DDH PER #1	
Drill Hole Record	DDH PER #2	
Drill Hole Record	DDH PER #3	

Appendix "A" Statement of Expenditures
Appendix "B" Statement
Appendix "C" Statement of Qualifications

COMINCO LTD.

EXPLORATION
NTS: 104N/11W

WESTERN DISTRICT
6 MAY 1980

APPENDIX "A"

STATEMENT OF EXPENDITURES

TIME:

BMM - field	7 days	852.00
- office	2 days	284.00
- travel	1 day	142.00
RKS - field	7 days	609.00
- office	2 days	174.00
- travel	1 day	87.00

DRILLING:

Direct Costs (Contract)	18,179.79
Helicopter Moves	2,950.24

ACCOMMODATION:

(Atlin-Ruby Creek)	66.66
Travel to & from Atlin (incl. food)	135.48
Supplies (including food)	292.35

TRUCK:

Rental	231.00
Gas & Repairs	130.53

ASSAYS:

24.60

SUPERVISION:

RJN - 1 day	170.00
RYW - 1 day	190.00
	<u>\$24,518.65</u>

COMINCO LTD.

EXPLORATION
NTS: 104N/11W

WESTERN DISTRICT
6 MAY 1980

APPENDIX "B"

IN THE MATTER OF THE B.C. MINERAL ACT AND
IN THE MATTER OF A DRILLING PROGRAM CARRIED OUT ON THE
PER AND EYE MINERAL CLAIMS
LOCATED IN THE ATLIN MINING DIVISION
OF THE PROVINCE OF BRITISH COLUMBIA

S T A T E M E N T

I, BARBARA MARIA MIODUSZEWSKA, OF THE CITY OF VANCOUVER, IN THE PROVINCE OF BRITISH COLUMBIA, HEREBY DECLARE:

1. THAT I am employed as a geologist by Cominco Ltd. and as such, have a personal knowledge of the facts to which I hereinafter depose;
2. THAT annexed hereto and marked as Appendix "A" to this statement is a true copy of expenditures incurred on a drilling program carried out on the Per and Eye mineral claims;
3. THAT the said expenditures were incurred for the purpose of mineral exploration of the above noted mineral claims between the 30th of July to the 8th of August, 1979.

Barbara M. Mioduszevska
B.M. MIODUSZEWSKA, GEOLOGIST

COMINCO LTD.

EXPLORATION
NTS: 104N/11W

WESTERN DISTRICT
6 MAY 1980

APPENDIX "C"

STATEMENT OF QUALIFICATIONS

I, B.M. Mioduszevska, with business address at 700-409 Granville Street, Vancouver, British Columbia, do hereby certify that I have supervised the drill program and have logged the drill core obtained from the said drilling which was carried out on the PER and EYE PROPERTY during 1979.

I also certify that:

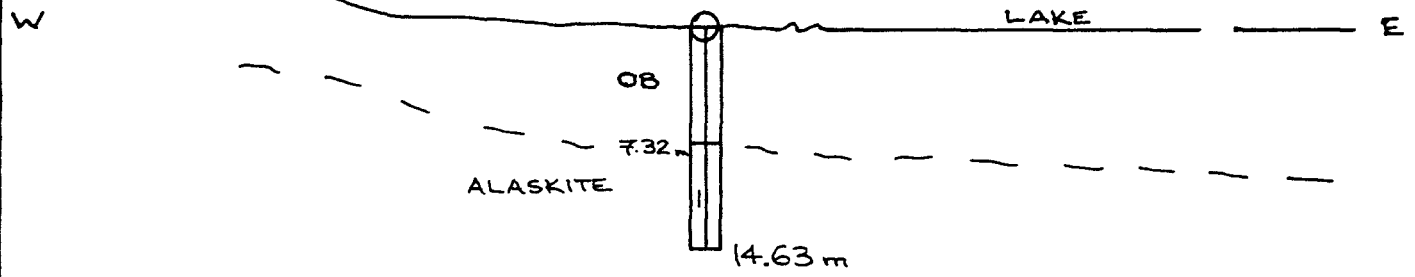
1. I graduated from the University of British Columbia with a B.Sc. in geology in 1970;
2. I have practised in British Columbia and the Northwest Territories since 1970;
3. I am a Fellow of the Geological Association of Canada.

Respectfully Submitted:

Barbara M. Mioduszevska
B.M. Mioduszevska, Geologist

PER #1

1300 m



1250 m

LEGEND

- 3 BASALT, FLOWS, CINDERS
- 2 TERTIARY SEDIMENTS ?
- 1 INTRUSIVE

MINERAL RESOURCES BRANCH
ASSESSMENT REPORT
8049
NO. _____



Drawn by: BMM		Traced by: RKS	
Revised by	Date	Revised by	Date

PEREYE PROPERTY

BMM

Scale: 1:5 Date: AUGUST 12/79 Plate: 3

PER #2

1250 m

W

E

OB

25.91 m

1200 m

LEGEND

- 3 BASALT, FLOWS, CINDERS
- 2 TERTIARY SEDIMENTS ?
- 1 INTRUSIVE

MINERAL RESOURCES BRANCH
ASSESSMENT REPORT

8049

NO. _____



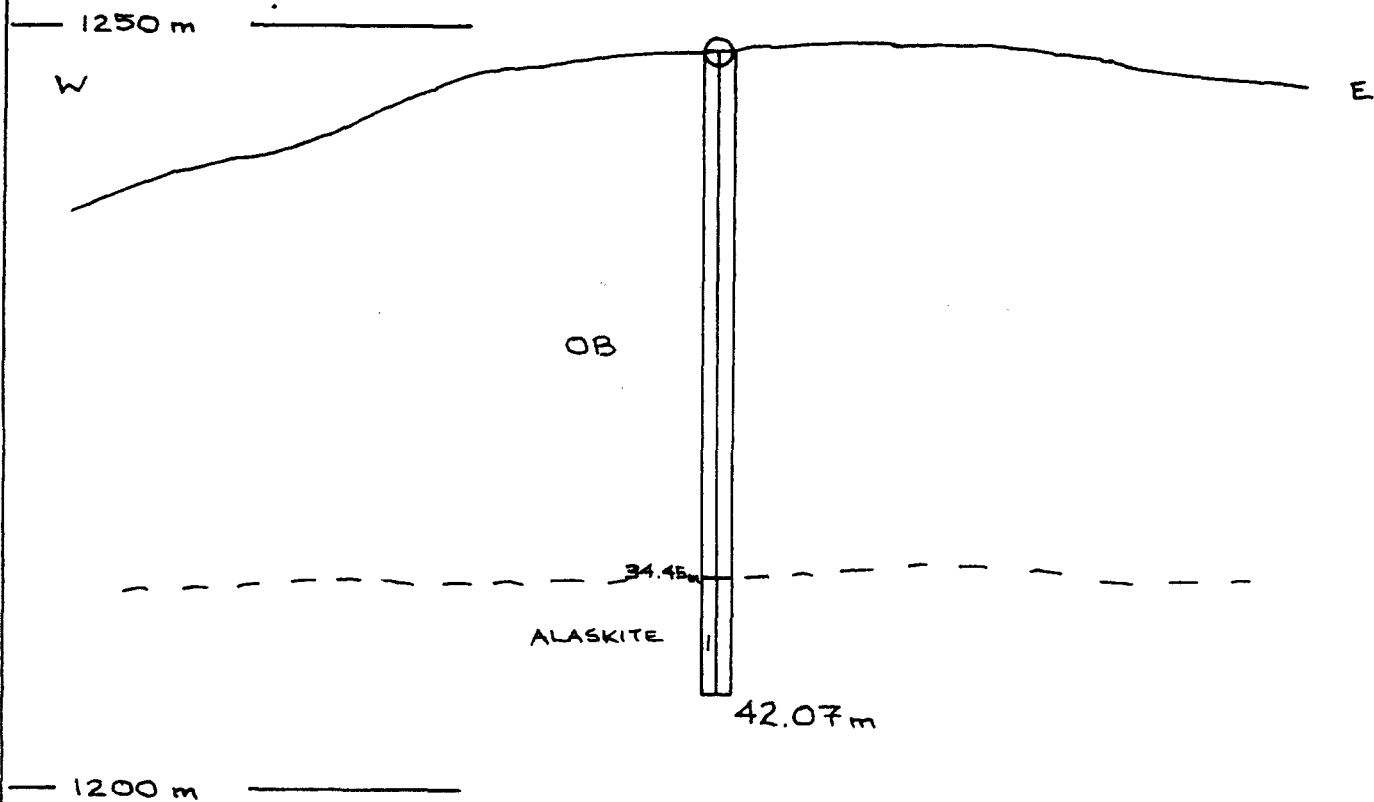
Drawn by: RKS		Traced by:	
Revised by	Date	Revised by	Date

PEREYE PROPERTY

BMM

Scale: 1:5 Date: AUGUST 29/79 Plate: 4

PER. #3



LEGEND

- 3 BASALT, FLOWS, CINDERS
- 2 TERTIARY SEDIMENTS ?
- 1 INTRUSIVE

MINERAL RESOURCES BRANCH
ASSESSMENT REPORT

8049

NO. _____

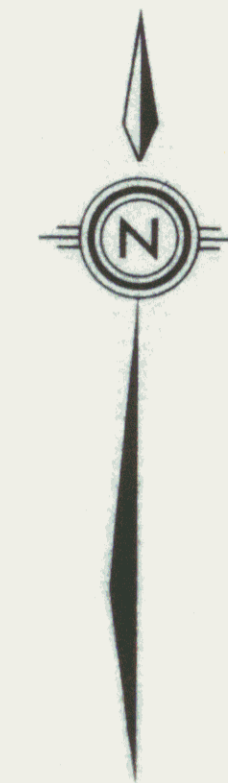
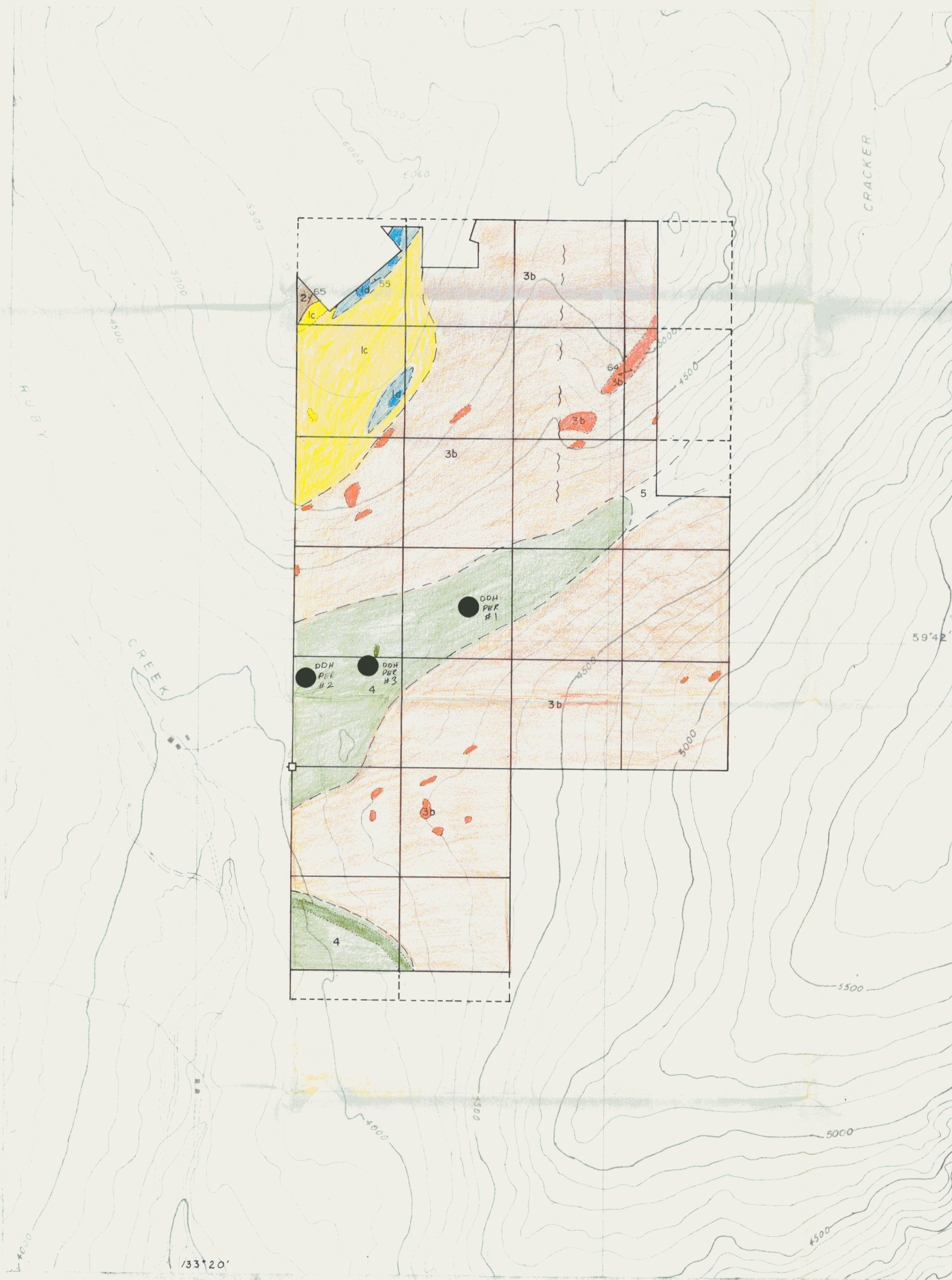


Drawn by: RKS		Traced by:	
Revised by	Date	Revised by	Date

PEREYE PROPERTY

BMM

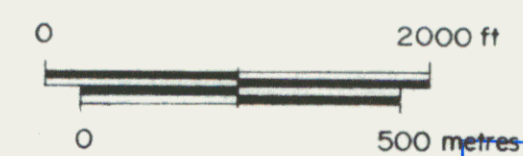
Scale: 1:5 Date: AUGUST 29/79 Plate: 5



LEGEND

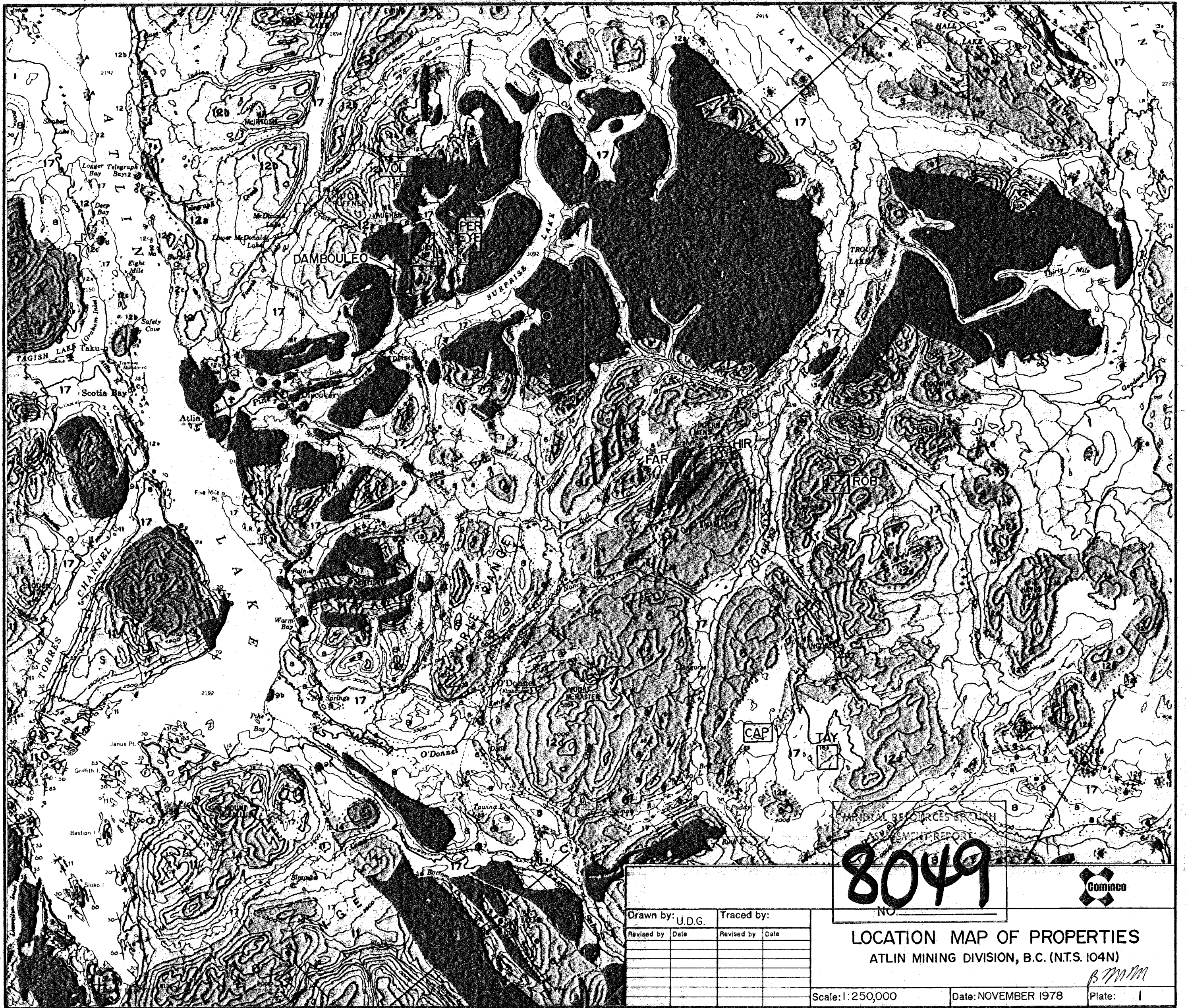
- Glacial drift and alluvium Quaternary
- Olivine basalt and scoria Tertiary and Quaternary
- Alaskite Cretaceous
- Granitoid intrusives Jurassic
- Ultramafics Pennsylvanian and Permian
- Cache Creek Group:
 - undifferentiated metasediments
 - chert-pebble conglomerate, greywacke
 - grey chert and amillite
 - grey marble
 - dark grey "ribbon" chert
 - buff to light grey chert, quartzite
 - skarn, amphibolite
- foliation: strike/dip
- bedding: strike/dip
- fault: observed, inferred
- fold axis: plunge
- axial trace: antiform, synform
- outcrop
- contact: observed, inferred
- claim boundary
- sample site: water, silt rock, soil
- S.W., Cu, Sp, Mineralization: scheelite, wolframite, chalcopyrite, sphalerite, Flu, Mo, fluorite, zeunerite, molybdenite
- legal corner post

SCALE



MINERAL RESOURCES BRANCH
ASSESSMENT REPORT
8049
NO.

PEREYE GROUP		
Drawn by: <i>MLG</i>	Traced by:	GEOLOGY AND LOCATION OF DDH'S <i>BMM</i> Scale: 1:12,000 Date: Nov. 1978 Plate: 2
Revised by: _____	Revised by: _____	



MINERAL RESOURCES BRANCH
 ASSESSMENT REPORT
8049
 NO.



Drawn by: U.D.G.	Traced by:
Revised by: Date	Revised by: Date

LOCATION MAP OF PROPERTIES
 ATLIN MINING DIVISION, B.C. (N.T.S. 104N)

BMM

Scale: 1:250,000 Date: NOVEMBER 1978 Plate: 1