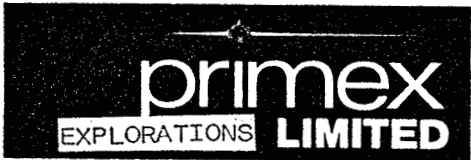


186-#91-# 8108



1979 DRILLING REPORT
PROVENCHER LAKE JADE PROPERTY
LIARD M.D. MAPSHEET 104 I-7E
LAT. 58° 16' LONG. 128° 40'
BAGGINS MINERAL CLAIM AND PML 2013
OWNED AND/OR OPERATED BY
PRIMEX EXPLORATIONS LIMITED

for

PRIMEX EXPLORATIONS LIMITED
8119 Fremlin St.
VANCOUVER, B.C.

Emc 199820

by

KIRK MAKEPEACE
operations manager
PRIMEX EXPLORATIONS LIMITED

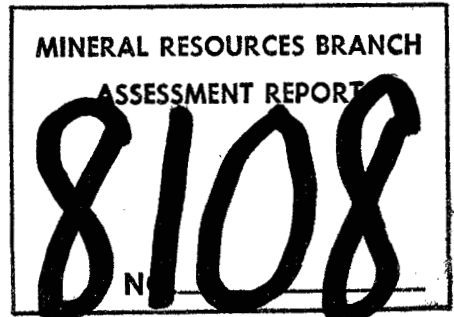




TABLE OF CONTENTS

INTRODUCTION	page 2
LOCATION AND ACCESS	2
CLAIMS	2
1979 PROGRAM	3
PLACER LEASES AND MINERAL CLAIMS	4
1979 DRILLING DATA	4
LOCATION MAP OF PROVENCHER LAKE AREA	5
PLACER LEASE MAP	6
MINERAL CLAIM MAP	7
ITEMIZED COST STATEMENT	8,9
INTERPRETATION AND CONCLUSION	3a
AUTHOR'S QUALIFICATIONS	3b



1979 DRILLING REPORT
PROVENCHER LAKE JADE CAMP

INTRODUCTION:

During the period of June 18 to October 6, 1979, a crew averaging 4 men under the supervision of Kirk Makepeace drilled a total of 153 boulders of jade on the talus slopes and in-situ locations of the 'Baggins' mineral claim and PL 2013 on Letain Creek.

LOCATION and ACCESS:

The company's claims and leases are located 52 miles east of Dease Lake, B.C. as is shown on the accompanying map. The property is near Nephro-Jade Canada Ltd's 'Provencher Lake' jade property and 5 miles from Cassiar Asbestos 'Kutcho' property at Letain Lake and 10 miles west of the Imperial - Sumac 'Kutcho' massive sulphide copper-silver-zinc deposit near Kutcho Creek.

Access is by float aircraft based in Watson Lake, Y.T. or by helicopter from Dease Lake, B.C. Supplies, equipment and crew were flown from Watson Lake by Watson Lake Flying Services Ltd. and helicopter services were provided by Yukon Air Ltd. at Dease Lake. A winter tote road constructed by Cassiar Asbestos Ltd. is used for transporting boulders to Dease Lake in winter, from Dease Lake they are trucked to Vancouver.

CLAIMS:

The company controls 1 placer mining lease and one-16 unit mineral claim, as shown on the accompanying maps.

1979 PROGRAM:

In 1979, Primex Explorations Limited conducted a drilling program on the company's mineral claim and placer lease. 5 drillers were employed (average crew size 4) under the supervision of Kirk Makepeace. The program commenced June 18 and was completed Oct. 6. A total of 153 boulders were drilled for exploration purposes with total footage drilled 114.40 metres.

The 1979 program was conducted in co-operation with the 1979 drilling program of Nephro-Jade Canada Ltd. whose properties are located in the same general area. Primex Explorations Limited split the cost of the season 35/65 with Nephro-Jade Canada Ltd. based on testing done. Therefore with a combined expenditure in the area for testing purposes of \$72,510.12, Primex Explorations Limited is applying 35% or \$25,378.54 for exploration purposes. Cost per metre drilled (including all 153 boulders) was $\$25,378.54/114.40 = \221.84 per metre.

Detailed core logs are not kept as most core is of poor quality. but all cores are kept in storage at 1755-140th Street, Surrey, B.C.

Detailed cost and exploration drilling data are provided on the following pages.



Kirk Makepeace
Operations Manager
Primex Explorations Limited

INTERPRETATION AND CONCLUSION

All diamond drilling was conducted on surface deposits of nephrite discovered on the Baggins mineral claim. Cores were recovered from all holes drilled and evaluated for the quality of jade present. The major drilling program was conducted along a lense of nephrite and boulders which had broken off the lense.

Drill cores showed that while a large portion of the uncovered lense consisted of gem-quality jade, the quality of the jade became considerably poorer and thusly unmarketable as the lense dipped back under the surface. The gem-quality jade had been exposed longer and much of it had split and broken into boulders which were scattered close by the lense.

Because to furthur expose the outcrop would require many hours with heavy equipment and that drill cores showed that poorer jade was more prevelant as the outcrop dipped under the surface, no furthur drilling or excavation is planned at this time.

AUTHORS QUALIFICATIONS

The author's qualifications are based on field experience gained during employment with three mining companies between 1968 and 1980. In addition the author has attended the University of B.C., Douglas College and short courses offered by the B.C. and Yukon Chamber of Mines but to date no degree has been obtained.

The schedule of field experience is as follows:

- 1968 - 1973 seasonal prospector for Slesse Gold Mines Ltd. in New Westminster mining district.
- 1976 employed by Nephro-Jade Canada Ltd. as prospector in jade mining operation near Kutcho Creek.
- 1977 - 1978 field manager for Nephro-Jade Canada Ltd.
- 1979-1980 Operations manager for Primex Explorations Ltd. at jade deposits near Provencher Lake, B.C., and Ogden Mtn. B.C.



PROVENCHER LAKE AREA

PLACER LEASES AND MINERAL CLAIMS

<u>Lease/Claim</u>	<u>OWNER</u>	<u>DATE OF RECORD</u>
PL 2013	K. Makepeace	Sept. 14/79
Baggins(744)	Primex Explorations Ltd.	March 30/79

1979 DRILLING DATA

Baggins(744) 114.40 metres @ \$221.84 per metre = \$25,378.54 ✓

All diamond drilling was conducted with JKS Packsack Drills using XRP size bits and core barrels, core diameter measured 7/8 ".

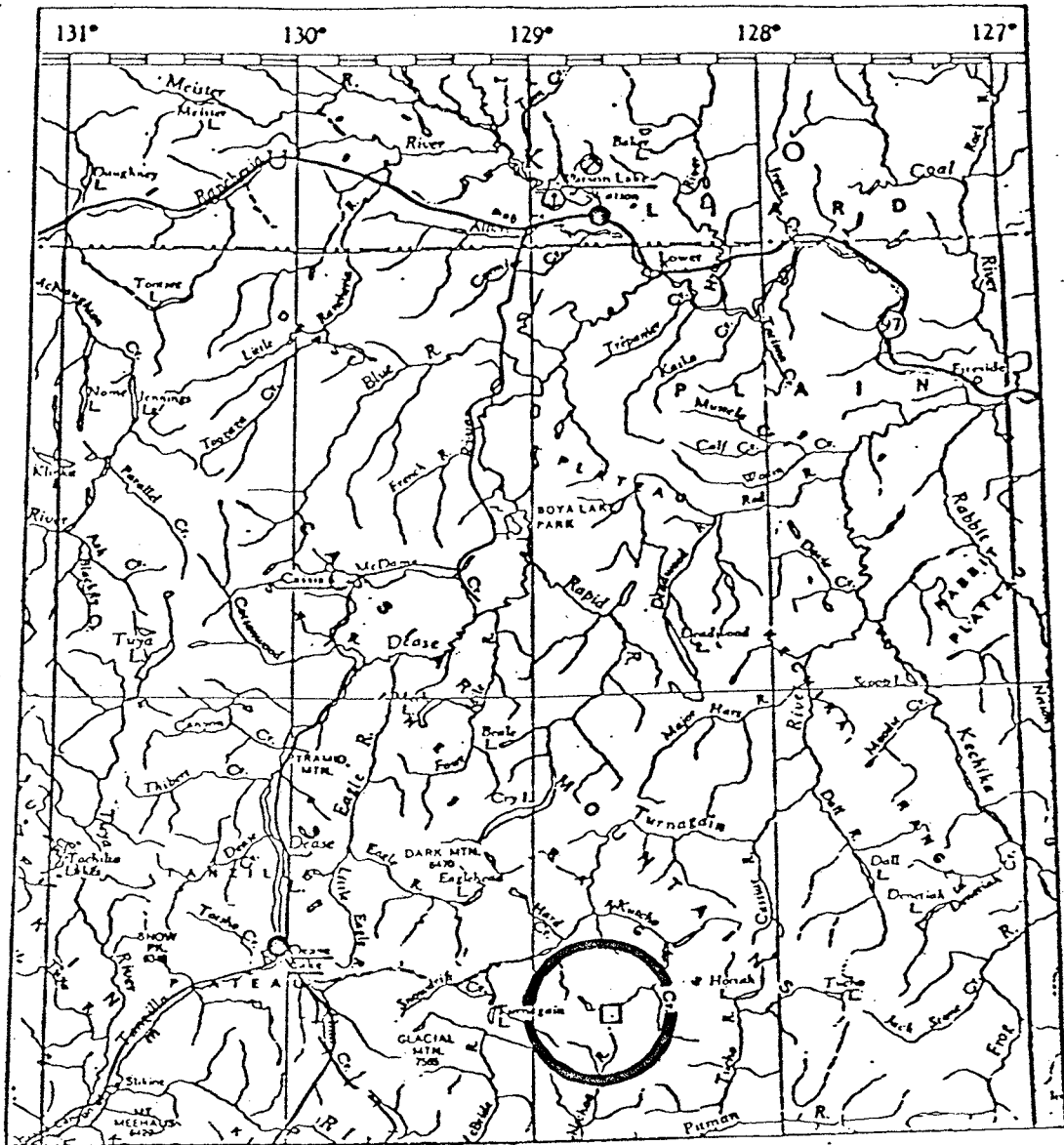
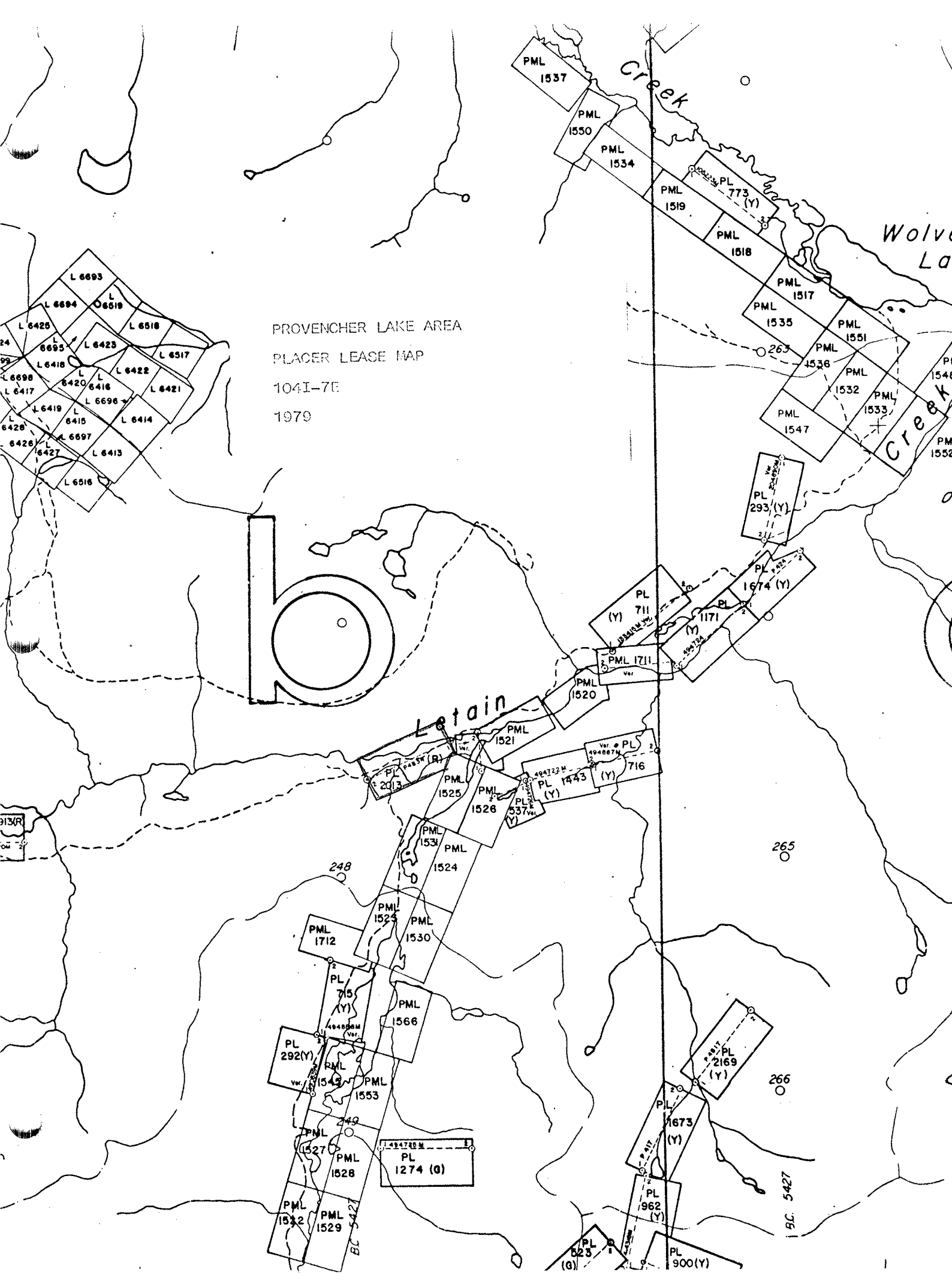


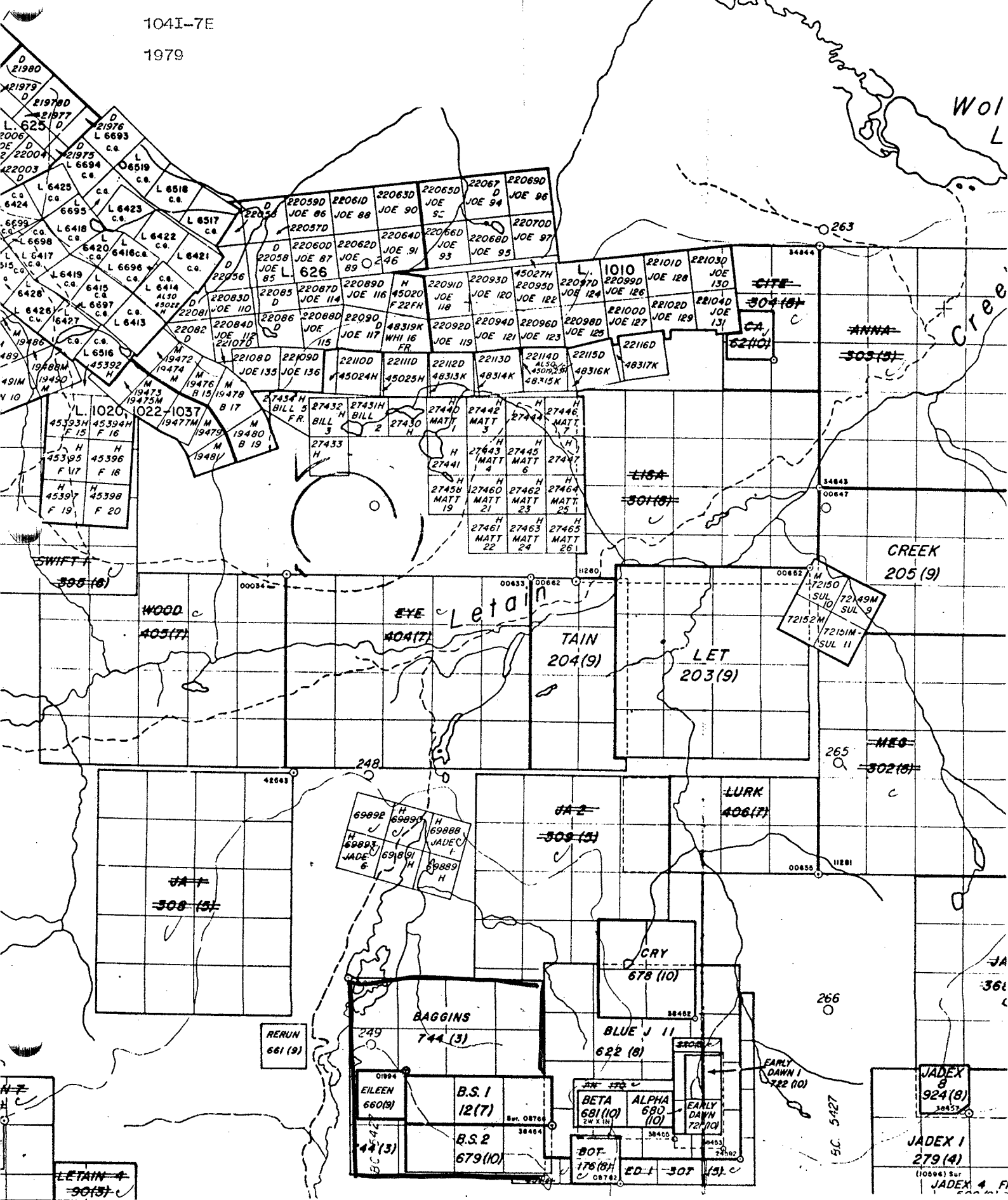
FIG. 1. Location map of Dease Lake - Watson Lake area. Large circle outlines Provencher Lake area. Scale: 1 in = 30 mi.

PROVENCHER LAKE AREA
PLACER LEASE MAP
104I-7E
1979



PROVENCHE LAKE AREA
 MINERAL CLAIM MAP
 104I-7E
 1979

BETA
 215(9)
 33648



Wol L

Creek

ANNA
 305(10)

CREEK
 205(9)

LETAIN
 404(7)

TAIN
 204(9)

LET
 203(9)

WOOD
 405(7)

LURK
 406(7)

BAGGINS
 744(3)

CRY
 678(10)

BLUE J II
 622(8)

EILEEN
 660(9)

B.S. 1
 12(7)

BETA
 681(10)

ALPHA
 680(10)

B.S. 2
 679(10)

EARLY DAWN I
 722(10)

JADEX
 924(8)

JADEX I
 279(4)

LETAIN
 301(10)

JADEX 4
 360(10)



ITEMIZED COST STATEMENT

A. WAGES: (including overtime & bonuses)

<u>NAME</u>	<u>RATE</u>	<u>DATES</u>	<u>TOTAL</u>
Wilson Lo	\$1,250/mo.	June 16 - Aug. 11	\$2944.50
Dan Whalen	1,250/mo.	June 19 - Oct. 6	\$6065.81
John Makepeace	1,500/mo.	June 11 - Oct. 6	\$7870.30
Mike Van Alderwegen	1,250/mo.	June 16 - Sept. 6	\$4902.00
Bill Nehass	1,650/mo.	Aug. 16 - Sept. 15	\$2166.00
Kirk Makepeace	1,500/mo.	June 1 - Oct. 31	\$9000.00
			<hr/>
			\$32,948.61

B. SUPPLIES & SERVICES

Aircraft: Yukon Air	\$ 900.85
Watson Lake Flying Service	11,361.89
B.C. Yukon	171.00
<hr/>	
	\$12,433.74

Fuel: Watson Lake Oil Distributors	\$ 1,869.75
Markles Welding, Dease Lake	136.15
Chevron Oil	922.31
<hr/>	
	\$ 2,828.21

DRILLING SUPPLIES:

J.K. Smit	\$4573.98
West Coast Drilling Supplies	4128.41
<hr/>	
	\$ 8702.39

Food:

Campground Services	\$ 3135.96
Kelly Douglas	1214.16
South Dease Service	58.27
Yukon Foods	62.00
<hr/>	
	\$ 4470.39

Communications:

B.C. Telephone	\$ 284.10
----------------	-----------



Travel and Accomodation:

S.L.K. Holdings (Belvedere Hotel)	\$ 688.00
Grayling Inn	145.00
Watson Lake Hotel	62.70
C.P. Air	3122.83
P.W.A.	76.30

\$ 4094.83

Vehicle Rental

Petra Gem	\$ 1448.59
-----------	------------

Supplies and Equipment

E.G. Whalley & Sons	\$ 283.40
Roy's Auto & Hardware	100.08
Magneto Sales	2306.22
Spilsbury & Tindall	454.08
Army & Navy Dept. Stores	271.50
Joe's Lawnmower	23.63
Lumberland	58.23
London Drugs	114.39
Deakins Equip.	44.40
Woolco	41.79
Sears	42.40
Northern Metallic	313.78
Gilchrist Building Supplies	49.85
Watson Lake Hardware	58.79
3 Vets	49.17

\$ 4211.71

\$ 1087.56

Miscellaneous Expenses

A. Wages.....	\$32,948.61	\$ 39,561.51
B. Supplies & Services.....	\$39,561.51	

\$72,510.12 TOTAL 1979 EXPLORATION COSTS