

STATEMENT OF EXPLORATION

BUSE CLAIMS 1, 2, 3 AND 4

KAMLOOPS MINING DIVISION

NTS LOCATION 92I/9E

OWNER-OPERATOR: CANADA CEMENT LAFARGE LTD.

SUBMITTED BY: KEN SWANSON

APRIL 10, 1980

MINERAL RESOURCES BRANCH  
ASSESSMENT REPORT  
**8114**  
NO.

## TABLE OF CONTENTS

1. INTRODUCTION
2. TECHNICAL DATA
3. DRILLING REPORT
4. COST STATEMENT
5. COST STATEMENT
6. AUTHOR
7. PLAN MAP NO. 1
8. INDEX MAP NO. 2

INTRODUCTION

The Buse mineral claims are located in the Kamloops Mining Division 10 miles east of Kamloops on the easterly side of Buse Lake, approximately 1 mile south of the old Vernon Highway (see index map Page 8). Access to the property is from this highway via a well maintained private road.

The claims are situated on Crown land and owned by Canada Cement Lafarge Ltd. Since 1970 a quarry has been operated under a contract by Plateau Construction Ltd. of Kamloops. Prior to 1970 the area was primarily used for cattle grazing, though a small amount of material had been removed some time in the past, presumably for decorative stone work.

There are no minerals of economic value on the property other than those of use in the manufacture of cement. Specifically a bed of altered volcanic ash, low in alkalies, that serves as the main supply of  $Al_2O_3$  for the Canada Cement Lafarge Ltd., Kamloops cement plant. Typically the rock assays 14%  $Al_2O_3$  and approximately 27,000 tonnes are mined annually.

In March of this year 7 BQ diamond drill holes were sunk for a total of 611.4 metres. The work was carried out on Buse 1, 2 and 3 claims.

TECHNICAL DATA

The purpose of the drilling program was to delineate the bed of volcanic tuff that is presently being mined. It was hoped to establish a 25 year reserve that could be economically mined by open pit operations.

Visual examination of the core by the author showed that this potential exists but detailed drill logs have not been prepared and assay results will not be available for 3 to 4 months.

DRILLING REPORT

The seven holes drilled are located on the plan map MAP NO. 1, PAGE 7. All holes were 90 deg. BQ holes with the following elevations and depths:

<u>HOLE NO.</u>	<u>LENGTH (m)</u>	<u>ELEVATION (m)</u>
80-1	78.3	577.6
80-2	50.9	609.6
80-3	132.5	609.6
80-4	102.7	612.6
80-5	139.4	573.0
80-6	44.8	582.2
80-7	62.8	528.8

The core is being stored at the Kamloops cement plant.

# G. & D. Diamond Drilling

5425 DALLAS DRIVE  
KAMLOOPS, B.C. V2C 4W7  
GLEN L. SHAW—PHONE 573-5186

March 28, 1980.

IN ACCOUNT WITH:  
Canada Cement Lafarge Ltd.,  
R.R. #2,  
Kamloops, B.C. V2C 2J3

COSTS:

Hole No.1	-----	257	feet
Hole No.2	-----	167	feet
Hole No.3	-----	435	feet
Hole No.4	-----	337	feet
Hole No.5	-----	457	feet
Hole No.6	-----	147	feet
Hole No.7	-----	206	feet

Total footage --2006 feet

Additives used:

Hole No. 1	---	45	Gallons Soluble Oil
Hole No. 5	---	10	Gallons Soluble Oil

L 8771

# Diamond Drilling

5425 DALLAS DRIVE  
KAMLOOPS, B.C. V2C 4W7  
GLEN L. SHAW—PHONE 573-5186

## TOTAL COSTS:

DRILLING:  
2006 Feet @ \$13.50 per foot --- \$ 27,081.00

ADDITIVES:  
One 45 Gallon Barrel  
Soluble Oil ----- \$ 130.00  
  
Two 5 Gallon Pails  
Soluble Oil ----- 30.00  
@ \$15.00

TOTAL COSTS FOR DRILLING PROGRAM \$ 27,241.00

---

---

AUTHOR

NAME: Kenneth H. Swanson

QUALIFICATIONS:

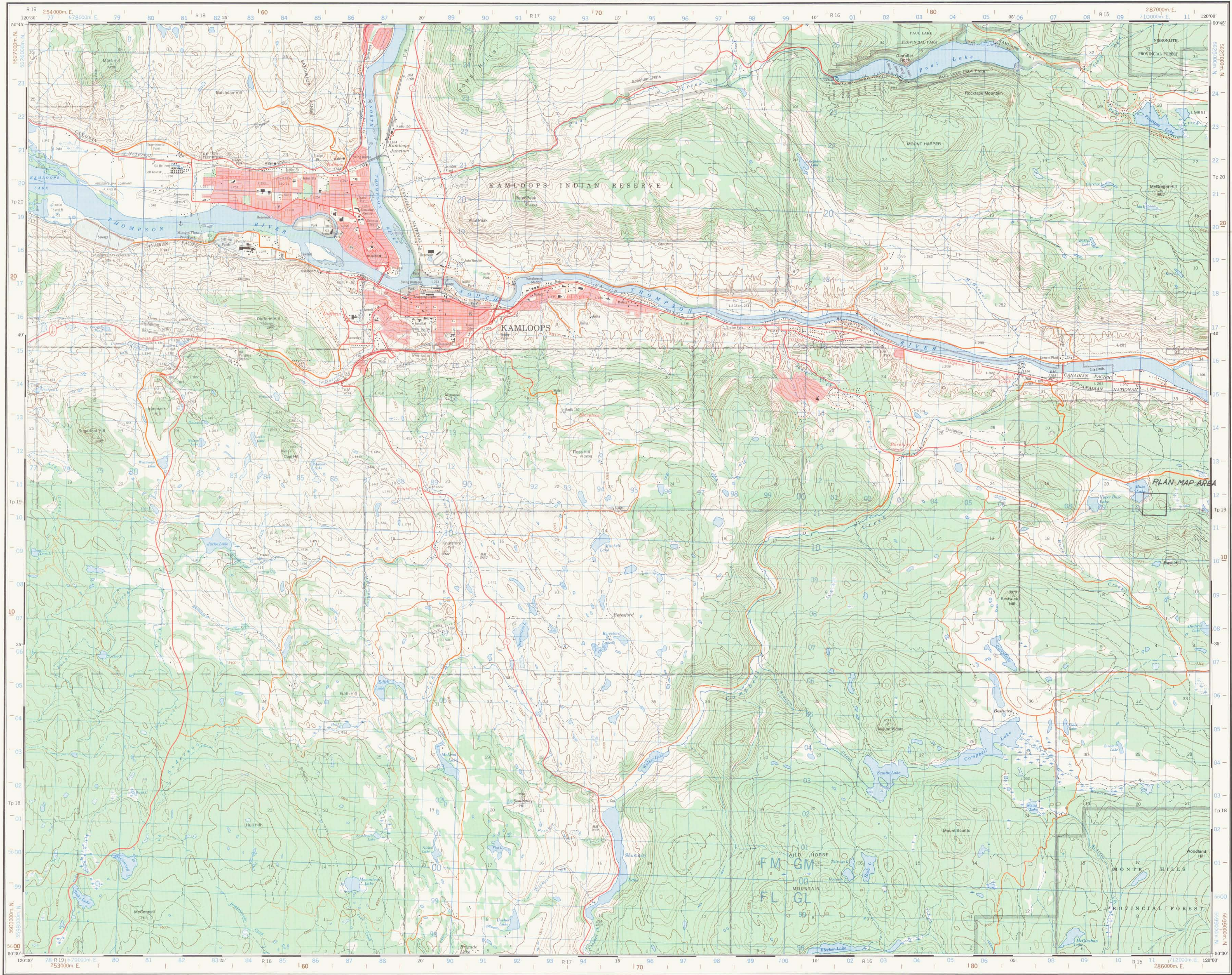
1. Registered B.C. Licensed Assayer since 1966.
2. 8 Years in the mining industry as Assayer, Chief Assayer, Research and Development Technician with Cominco Ltd. and Lornex Mining.
3. 8 Years with Canada Cement Lafarge Ltd. as Chief Chemist with responsibility for quality control as well as quarry development, exploration and raw material evaluation.

*Kenneth H. Swanson*



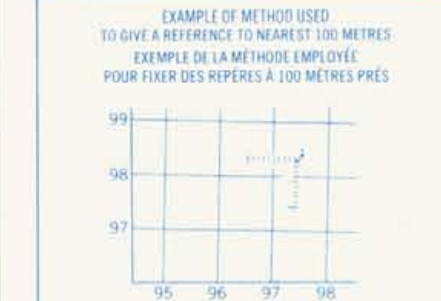
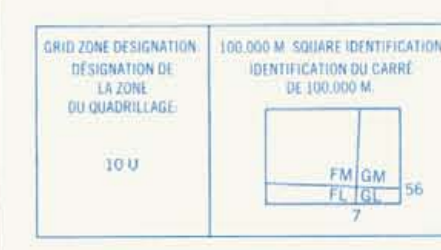
Military users refer to this map as: Références de cette carte pour usage militaire: SÉRIE A 721 MAP 92-1/9 CARTE ÉDITION 3 MCE ÉDITION

MINERAL RESOURCES BR... ASSESSMENT REPORT 8114 NO.



Vertical scale bar: 0 to 1000 METERS. Text: 'Echelle de conversion des élévations'.

ONE THOUSAND METRE UNIVERSAL TRANSVERSE MERCATOR GRID ZONE 10



REFERENCE POINT CHURCH - EDLISE. EASTING: 700000. NORTHING: 5795000. GRID REFERENCE: 700000 5795000.

BROWN NUMBERED TICKS INDICATE THE 1000 METRE U.T.M. GRID.

Table with 3 columns and 3 rows of grid coordinates: 92 1015, 92 1016, 92 1017; 92 1018, 92 1019, 92 1020; 92 1021, 92 1022, 92 1023.

Published by the SURVEYS AND MAPPING BRANCH, DEPARTMENT OF ENERGY, MINES AND RESOURCES...

KAMLOOPS KAMLOOPS DIVISION OF YALE LAND DISTRICT BRITISH COLUMBIA WEST OF SIXTH MERIDIAN - OUEST DU SIXIEME MERIDIEN Scale 1:50,000 Echelle

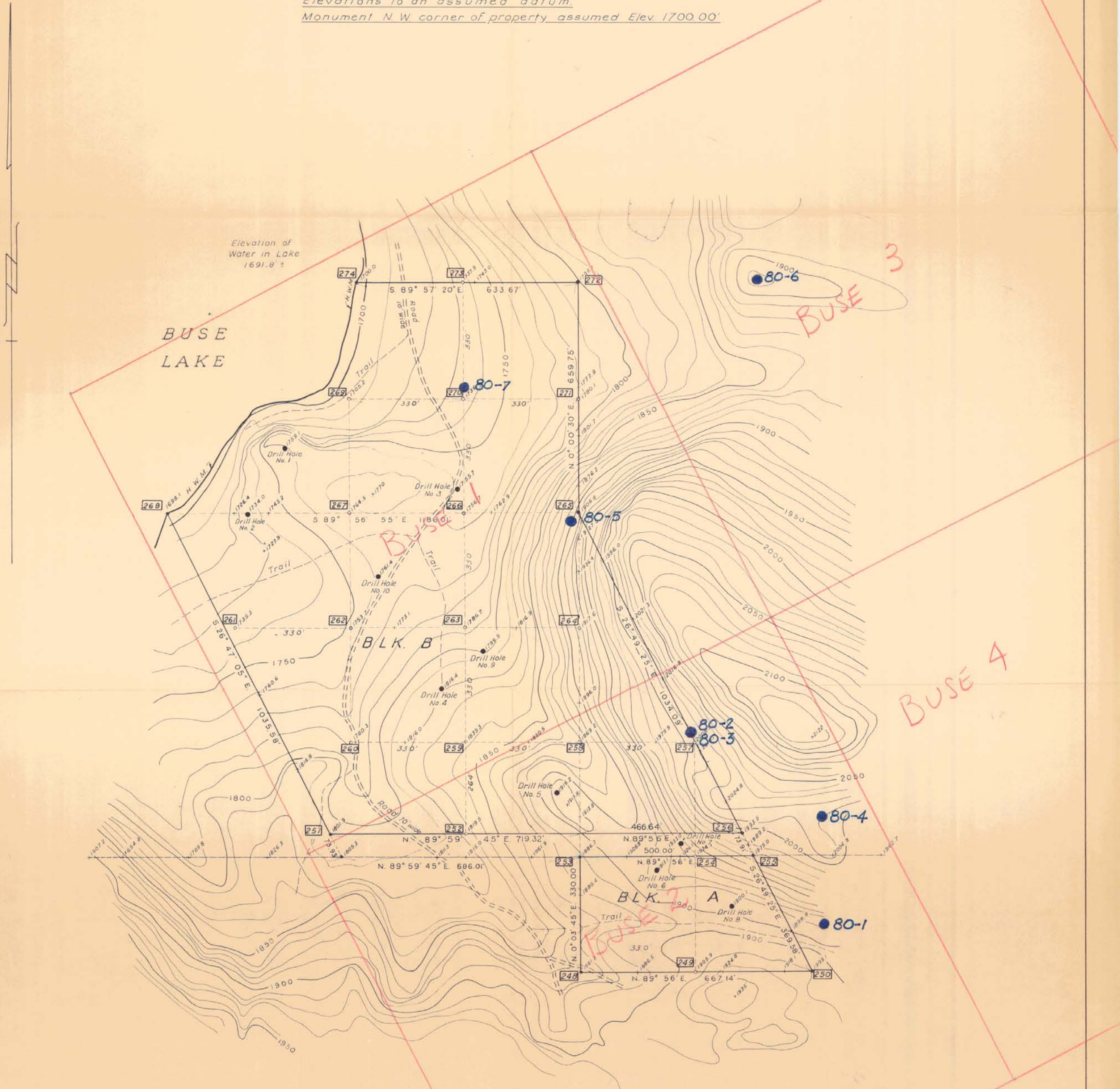


Élaboré par la DIRECTION DES LEVES ET DE LA CARTOGRAPHIE, MINISTÈRE DE L'ÉNERGIE, DES MINES ET DES RESSOURCES...

# TOPOGRAPHIC PLAN OF BLOCK A OF SECTION 16 AND BLOCK B OF SECTION 21 TOWNSHIP 19, RANGE 15, W. 6 M.

SCALE - 1 INCH = 200 FEET

Elevations to an assumed datum.  
Monument N.W. corner of property assumed Elev. 1700.00'



**LEGEND**

- 248 Concrete Monument and Steel Bar
- 249 Iron Post and Steel Bar
- 250 Concrete Monument and Steel Bar
- 251 Concrete Monument and Steel Bar
- 252 Iron Post and Steel Bar
- 253 Concrete Monument and Steel Bar
- 254 Iron Post and Steel Bar
- 255 Concrete Monument and Steel Bar
- 256 Concrete Monument and Steel Bar
- 257 Iron Post and Steel Bar
- 258 Iron Post and Steel Bar
- 259 Iron Post and Steel Bar
- 260 Iron Post and Steel Bar
- 261 Iron Post and Steel Bar

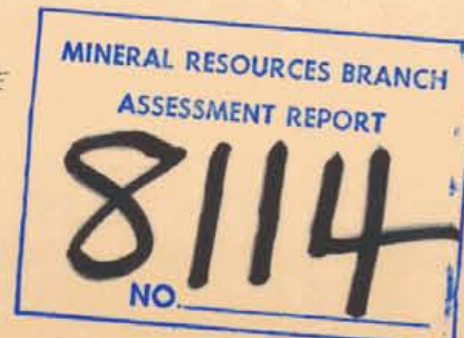
**Elevation**

- 1861.2
- 1905.3
- 1909.1
- 1801.9
- 1819.5
- 1886.7
- 1924.1
- 1975.0
- 1993.5
- 2008.5
- 1869.2
- 1839.3
- 1780.3
- 1735.3

**Elevation**

- 262 Iron Post and Steel Bar
- 263 Iron Post and Steel Bar
- 264 Iron Post and Steel Bar
- 265 Concrete Monument and Steel Bar
- 266 Iron Post and Steel Bar
- 267 Iron Post and Steel Bar
- 268 Concrete Monument and Steel Bar
- 269 Iron Post and Steel Bar
- 270 Iron Post and Steel Bar
- 271 Iron Post and Steel Bar
- 272 Concrete Monument and Steel Bar
- 273 Iron Post and Steel Bar
- 274 Concrete Monument and Steel Bar

NOTE: ALL POINTS SET ARE IN CONCRETE



Certified correct

*Anthony C. Loach*  
B.C.L.S.  
Dated: 17<sup>th</sup> SEPT 1968.

ANTONY C. LOACH & ASSOCIATES  
B. C. LAND SURVEYORS  
NORTH VANCOUVER, B. C.