

80-4359-H

PROSPECTING REPORT

ON

C R CLAIMS

OMINECA MINING DIVISION

93K 14

SUBMITTED BY

VIC GUINET

OWNER

FOR

MOUNTAINEER MINES LTD.

MARCH 1980

MINERAL RESOURCES BRANCH ASSESSMENT REPORT 8135 NO _____
--

TABLE OF CONTENTS

	<u>PAGE</u>
INTRODUCTION	1
HISTORY	2
CLAIMS	2
GENERAL GEOLOGY	2
LOCATION MAP (FIGURE 1)	FOLLOWS PAGE 2
LOCAL GEOLOGY AND INTERPRETATION	3
APPENDIX I - AUTHOR'S QUALIFICATIONS	
APPENDIX II - ASSAYS	
APPENDIX III - STATEMENT OF EXPENSES	
TRAVERSE AND GEOLOGY MAP	IN POCKET

INTRODUCTION

The CR 1-5 claims were located by the writer in 1979. They are located on N.T.S. 93 NW at Longitude 125° 20' and Latitude 54° 55' N within the Omineca Mining Division.

The CR claims are located approximately 8 miles southeast of Leo Creek and on the east and northeast flanks of Mount Sidney Williams.

The property covers an area of moderate relief from 2500 feet to 5400 feet. Bedrock and outcrop comprise approximately 60% of the claim group and in the more exposed areas, timber and vegetation are light. In the wet north facing areas, the underlying growth is heavy.

Access to the property is via logging road to within 10 miles of the property. Helicopter support is necessary for easy access and the movement of equipment from the road to the areas of exploration.

The purpose of this report is to document a reconnaissance prospecting program carried out by the writer and Messrs. Milledge and Roth during the period September 25 to October 2, 1979.

In general the intention of the program was to establish the location of the old chromite showings and to gain some information as to possible extensions. One hand trench was completed and sampled on a known showing.

A complete history of the property is given in the following section.

HISTORY

The following is a summary of the chromite deposits taken from Memoir 252 by J.E. Armstrong.

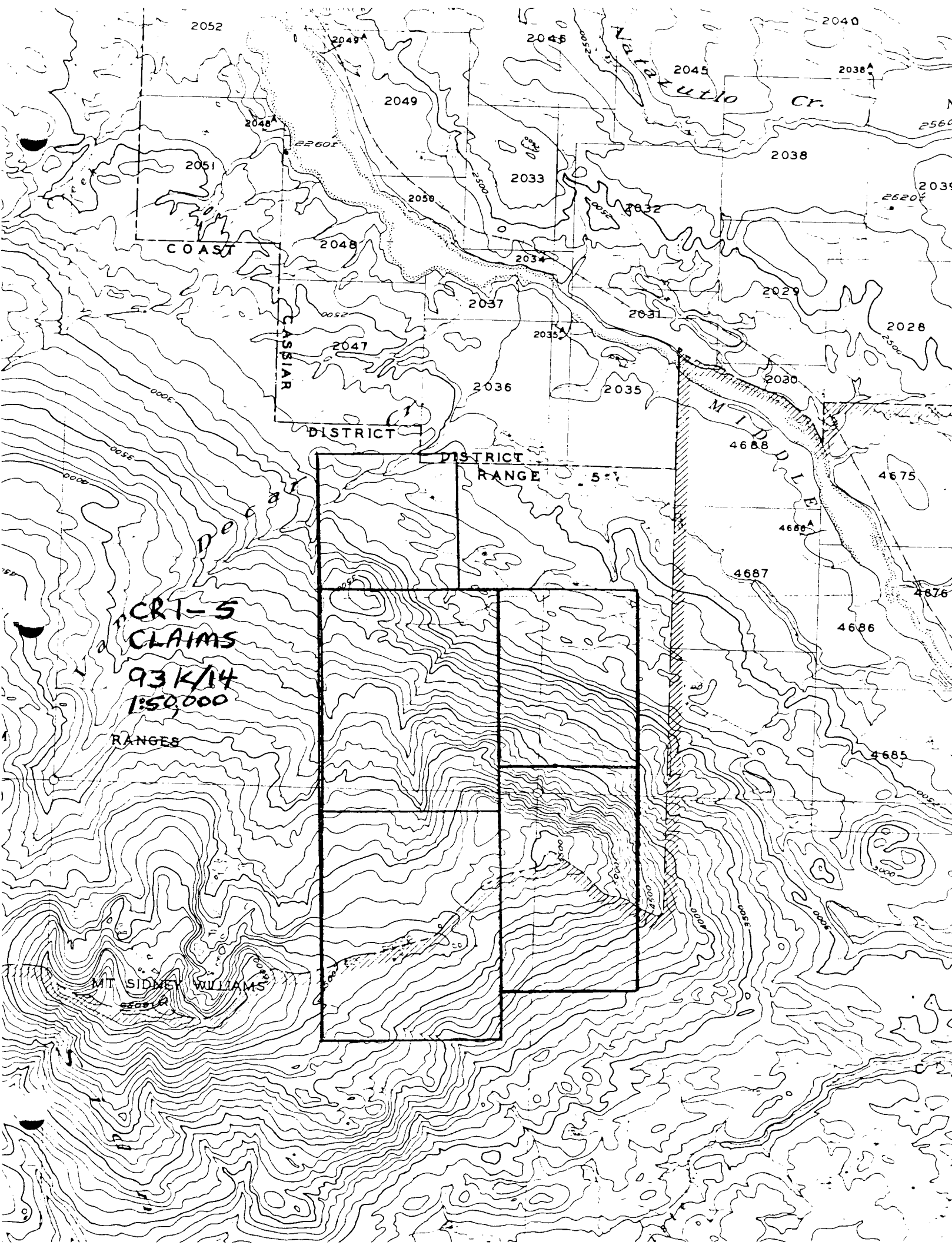
During the field season of 1942 nine chromite deposits were found in the dunites and peridotites exposed in the Middle River Range and the southern end of Mitchell Mountains. The largest chromite body discovered in the Middle River Range has a surface area of about 5 by 25 feet and contains at least 50 percent chromite. The largest lens observed in Mitchell Mountains was 8.8 by 32.5 feet, and contains 38.0 percent chromite. In addition to lenses of chromite, many zones containing disseminated chromite were observed. The disseminated chromite is interstitial to grains of olivine and appears to be of early magmatic origin. In other places chromite forms very small veinlets in serpentinized dunite. The lenses of chromite are generally in sharp contact with the host rock, but in places the contact is gradational.

CLAIMS

The CR 1 through 4 were staked on March 22, 1979 through March 24, 1979 and recorded on April 12, 1979, and are tagged by numbers 49301 through 49304 inclusive. In September 1979, Guinet staked an additional CR claim No. 5 to the north of the existing block. All ten claims are beneficially held by Mountaineer Mines Ltd. and recorded in the name of Victor Guinet.

GENERAL GEOLOGY

Middle River Range, which lies southwest of Middle River, is underlain by Cache Creek formations invaded by Tembleur ultrabasic and Omineca granitic intrusions. The Trembleur intrusions consist of a serpentinized peridotite-dunite batholith underlying Mount Sydney Williams and several serpentinized peridotite-dunite sills outcropping between Mount Sydney



2052

2040

2045

2045

2038

2049

2049

2048

2051

2038

2033

2050

2032

2033

COAST

2048

2034

2037

2029

CASIAR

2047

2035

2031

2028

2036

2035

DISTRICT

DISTRICT

RANGE

5-7

MIDDLEBURY Cr.

4688

4675

CRT-5
CLAIMS
93K/14
1:50,000

4688

4687

4676

4686

RANGES

4685

MT SIDNEY WILLIAMS

GENERAL GEOLOGY (continued)

Williams and Tsitutl Mountain. During the field season of 1942, Armstrong and H.W. Little, of the Geological Survey of Canada, prospected these ultrabasic masses for chromite, and several deposits were found, although none was of apparent commercial size.⁽¹⁾

LOCAL GEOLOGY AND INTERPRETATION

The Van Decar Creek deposit occurs at an elevation of 3700 feet, a mile southeast of the forks of Van Decar Creek, and about 3 miles from the Middle River.

The chromite occurs as an irregular-shaped lens in a serpentized dunite host rock. The main showing is 5 feet by 25 feet in area and contains at least 50 percent chromite.⁽²⁾

Several traverses were completed in search of the main showing. Once discovered, its size and nature were confirmed as to the old reports and a hand trench excavated across the zone for assay purposes. The values obtained from the sampling were from 17.7% Cr to 38.9% Cr. These results are in Appendix II.

The main zone was lens shaped and noted to be approximately 5 feet wide and 40 feet long. It occurs near the crest of a hill and dips moderately into the topography.

Further prospecting in surrounding areas failed to find any further massive chromite lenses. However, the dunites were very extensive and zones of disseminated mineralization were seen. Most of the disseminations were magnetite, but minor chromite was not uncommon.

(1) G.S.C. Memoir 252, J.E. Armstrong

(2) G.S.C. Memoir 252, J.E. Armstrong

LOCAL GEOLOGY AND INTERPRETATION (continued)

Since the dunite bodies are more extensive than originally thought, the chance for other high grade lenses is felt to be good. More prospecting on the claims is needed.

APPENDIX I

AUTHOR'S QUALIFICATIONS

I, Victor Guinet, of Prince George, B. C. do hereby certify that:

1. I am a resident of British Columbia and presently hold Free Miner's Licence No. 177448.
2. I have completed the Ministry of Mines and Petroleum Resources Mineral Exploration Course for Prospectors in 1978.
3. I have carried out my occupation as prospector both independently and in the employ of mining firms for the past 8 years.

A handwritten signature in black ink, appearing to read "Victor Guinet", with a stylized flourish at the end.

Victor Guinet

APPENDIX III

STATEMENT OF EXPENSES

VICTOR GUINET

Prince George, B. C.

Mountaineer Mines Ltd.
505 - 509 Granville Street
Vancouver, B. C. V6C 1T2

INVOICE NO. 1

CHARGES RE: C R CLAIM GROUP SAMPLING AND PROSPECTING PROJECT

AIR SUPPORT

Pacific Western (Vancouver-Prince George Return)	\$ 207.30
N.T. Air Float Plane - June 28, 1979	334.00
September 26, 1979	161.00
Northern Mountain Helicopters - June 28, 1979	296.00
September 25/October 2, 1979	3,491.00

MEALS AND ACCOMMODATION

Takla Rainbow Lodge	453.19
Miscellaneous in Prince George	95.29

TRUCK RENTAL

June 27-29 (3 days @ \$25.00 per day)	75.00
Plus 20¢/mile Lillooet - Prince George return - 800 miles	160.00
September 25-Oct. 2 (8 days @ \$25.00/day)	200.00
Plus 20¢/mile Prince George - Fort St. James return (200 miles)	40.00

GAS AND OIL

130.49

WAGES

Vic Guinet - 10 days @ 100.00/day	1,000.00
K. Milledge - 8 days @ \$80.00/day	640.00

MISCELLANEOUS

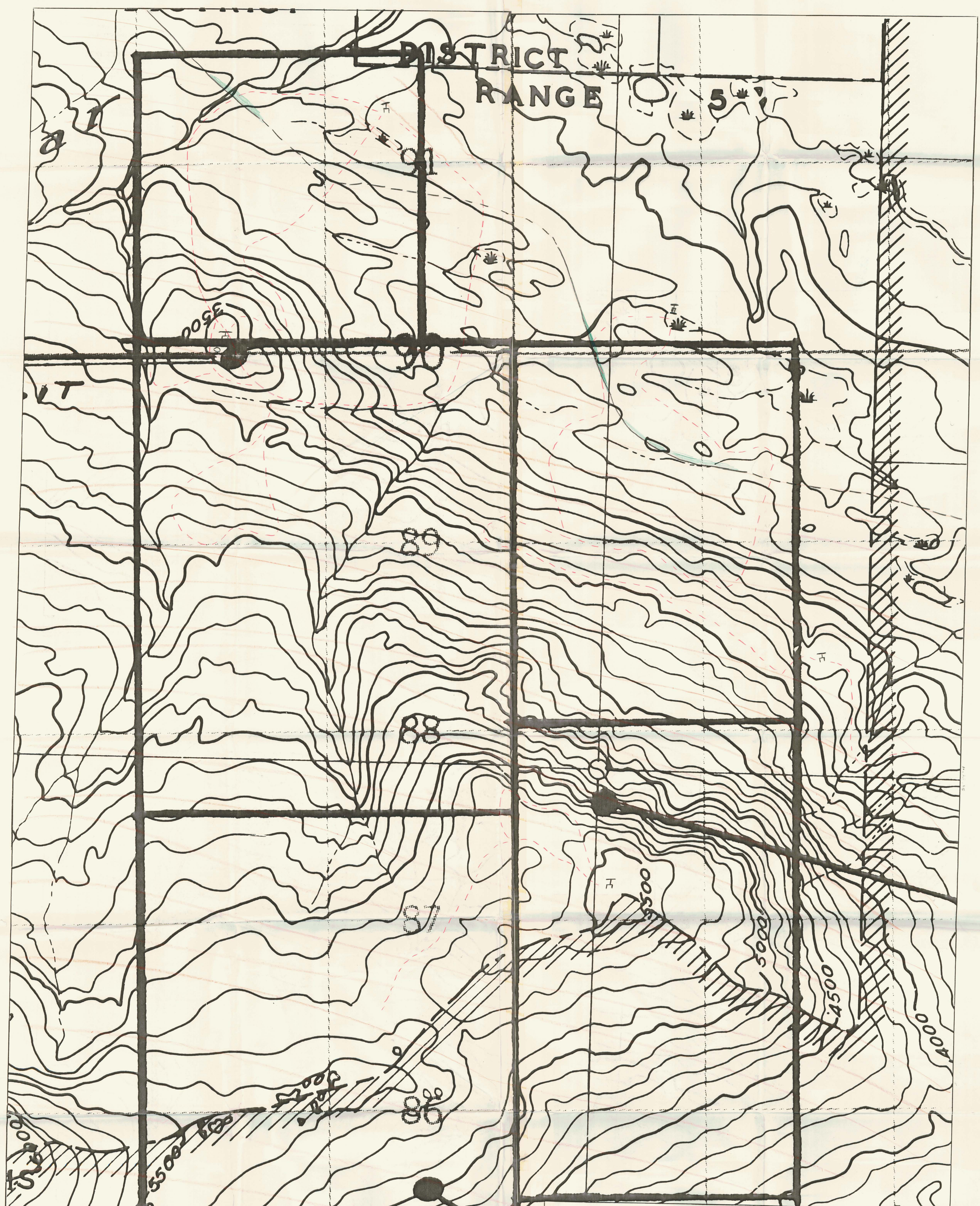
Hardware and Groceries	97.49
------------------------	-------

TOTAL

\$7,380.76

DISTRICT RANGE

5


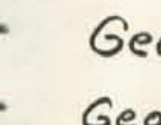

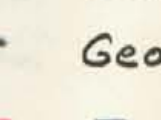
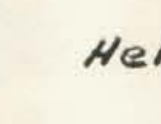
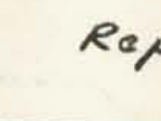
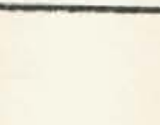


GEOLOGY AND TRAVERSE MAP

CR CLAIMS
NTS 93K/14
54°55' N 125°20' W


To Accompany
Dist Report by V. Gunnat

June 1980

- | | | | |
|---|---|---|--------------------------------|
|  | Serpentized peridotite
& dunite, alteration products |  | Geologic contact |
|  | chert, argillite, slate,
metamorphosed sediments |  | Geologic contact
(inferred) |
| | |  | Traverses |
| | |  | Helicopter Pad |
| | |  | Reported Showings |

N

Scale 1:5000



MINERAL DISTRICTS BRANCH
8135

125°20' W