

Diamond Drilling Assessment Report
(with Magnetometer Support Survey)
on the

Ax Property

(Ax and Jen Groups)
and specifically the
Ax 2, Ax 3 and Jill 1 Located Mineral Claims

Omineca Mining Division
Endako, B. C.

N.T.S. 93K/3E

Latitude 54°05'N; Longitude 125°10'W

and owned by

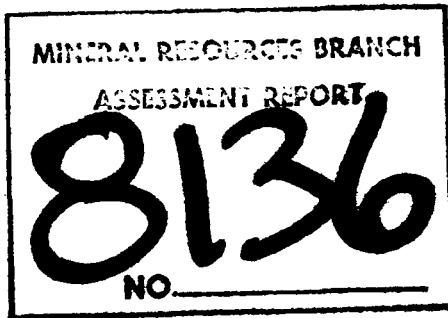


RIO PLATA SILVER MINES LTD.

of

Vancouver, B. C.

Work Done from March 5 to May 8, 1980



Report by

Robert Wolfe, P. Eng.,
June 10, 1980,
Delta, B. C.



Cochrane Consultants Limited
4882 Delta St., Delta, B.C. V4K 2T8 946-9221
Geotechnical Consulting / Exploration Services

geology
geophysics
geochemistry

TABLE OF CONTENTS

A.	INTRODUCTION	1
B.	LOCATION AND ACCESS	2
C.	CLAIMS INFORMATION	3
D.	MAGNETOMETER SURVEY	
1.	Field procedure and Data Processing ...	5
2.	Discussion of Results	5
E.	1980 DIAMOND DRILLING	7
F.	DISCUSSION OF RESULTS	8
G.	CONCLUSIONS AND RECOMMENDATIONS	10

Figures

1.	Location Map	Report body
2.	Claims Map	" "
3.	Composite Plan (showing drill hole locations and Generalized Geological Section)	" "
4.	Magnetic Survey Plan	Map pocket
5.	Magnetic Contour Plan	" "

Appendices

I	Diamond Drill Hole Logs
II	Certificate
III	Bibliography
IV	Specifications of Fluxgate Magnetometer Model MF-2
V	Olympic Drilling invoices
VI	Personnel and Cost Statement





Frontispiece

Diamond Drill Hole 80-4, Ax Group, April, 1980.



A. INTRODUCTION

During March and April, 1980, a magnetometer survey and a subsequent diamond drill program was conducted on the Ax and Jen Groups of claims. (Ax Property) The purpose of the drilling program was to investigate a new area of interest indicated by the last hole of the 1979 diamond drilling program. This last hole, 79-4, intersected significant molybdenum mineralization. The Drilling Contractor was Olympic Drilling Ltd. and the drill site and access road (Cat) work was performed by R. Orsetti, of Endako, B. C. The author supervised the program from March 30, 1980 to April 20, 1980. G. H. Giroux, P. Eng., supervised the program from March 20, 1980, to March 30, 1980.



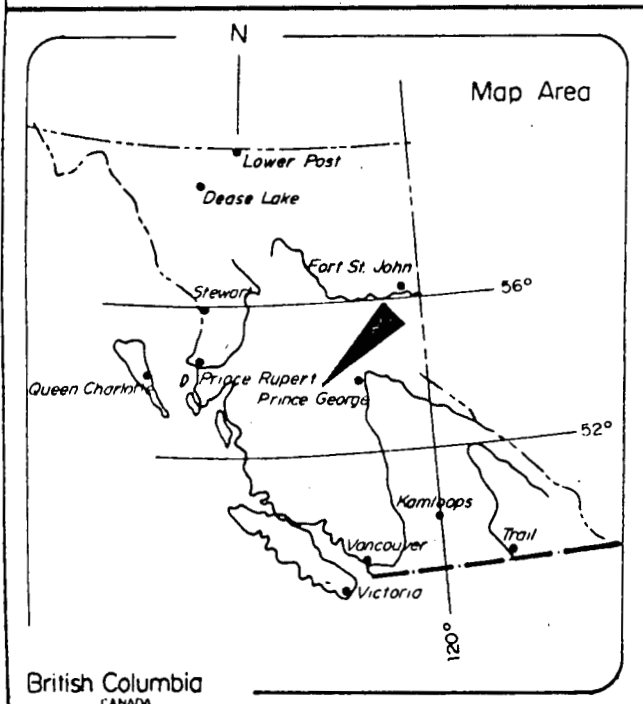
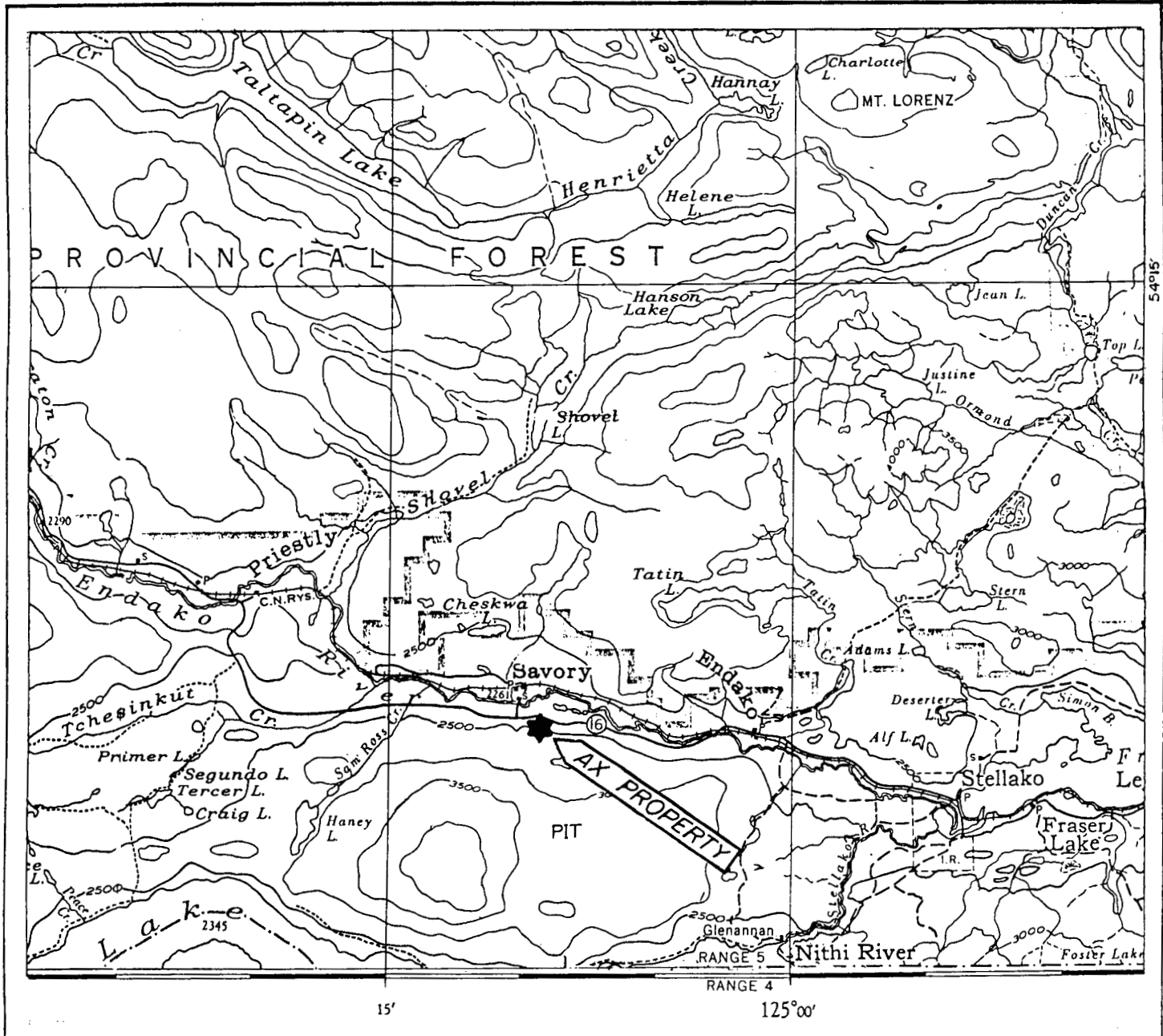
B. LOCATION AND ACCESS

The Ax and Jen Groups of mineral claims are centered six (6) kilometres due west of the town of Endako and immediately south of Highway number 16. The claims are 22 road kilometres north west of the village of Fraser Lake (the Endako Mine townsite) and 48 road kilometres south east of Burns Lake. Fraser Lake has a population of 1,500 (estimated 1975 B. C. Dept. of Economic Development) and a full compliment of services. The claims are 580 air kilometres north northwest of downtown Vancouver.

There are a number of 4 x 4 roads off the highway that provide good access to the claims area.

The N.T.S. code for the area is 93K/3E.

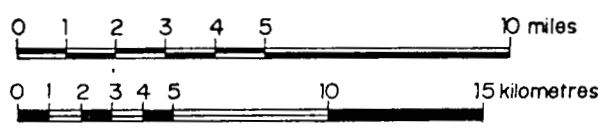




RIO PLATA SILVER MINES LTD.
 Ax & Jen Group Omineca Mining Division
 Endako, British Columbia N.T.S. 93K/3E

Figure 1
 Location Map

Scale : 1 to 250,000 or 1 inch equals approx. 4 miles.

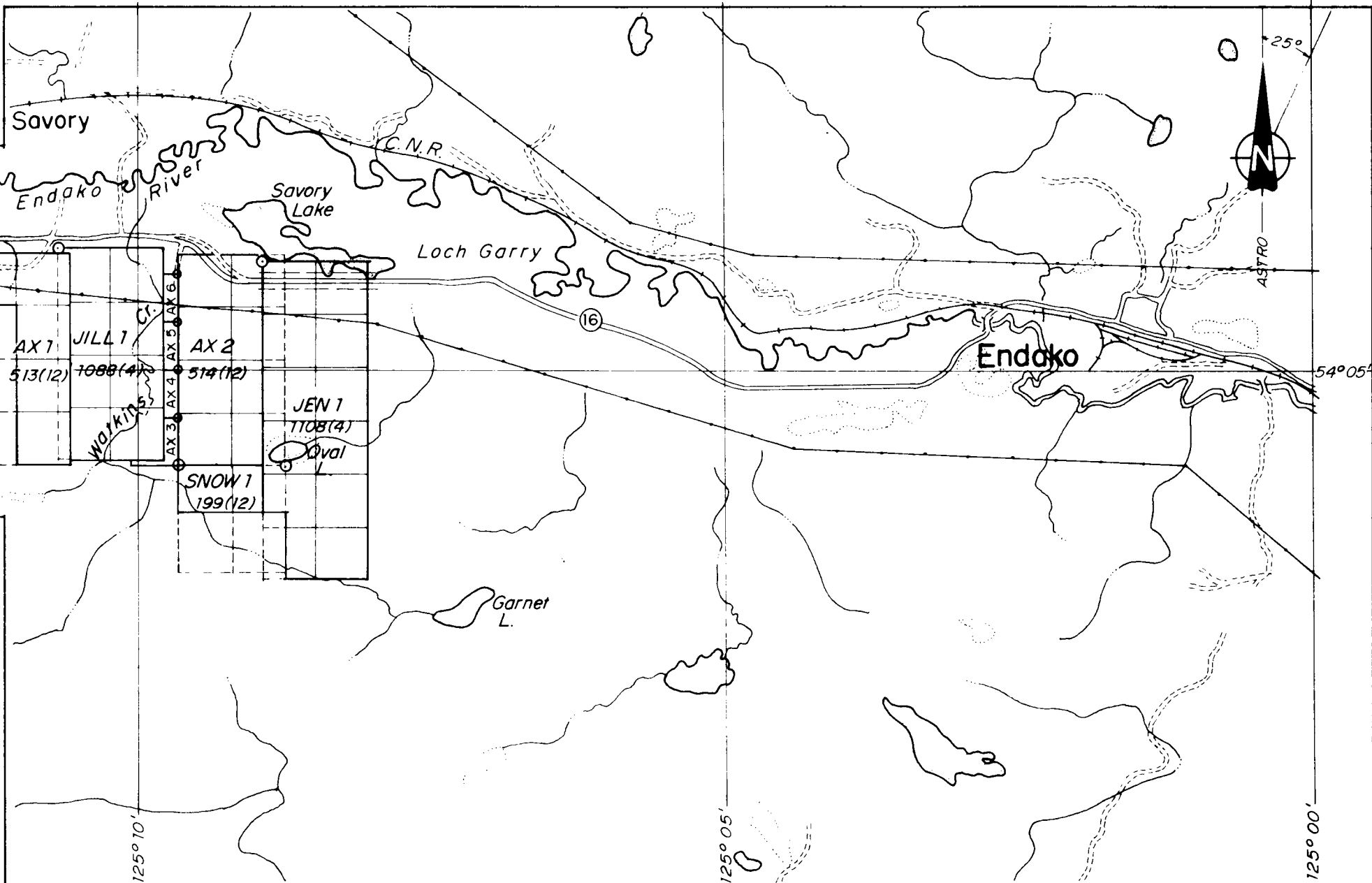


C. CLAIMS INFORMATION

The Ax and Jen Groups consist of five (5) contiguous modified grid claims made up of 40 units and four (4) new two-post claims, all of which are recorded in the Omineca Mining Division, B. C. They are plotted on B. C. Dept. of Mines Mineral Claims Map 93K/3E and as of December 19, 1979, the modified grid claims are registered in the name of Mr. G. Oates of Vancouver, B. C. The four (4) new two-post claims are owned by Rio Plata Silver Mines Ltd. Rio Plata Silver Mines holds title by option to the modified grid staked claims.

The following table lists pertinent claims information (also accompanying claims map).

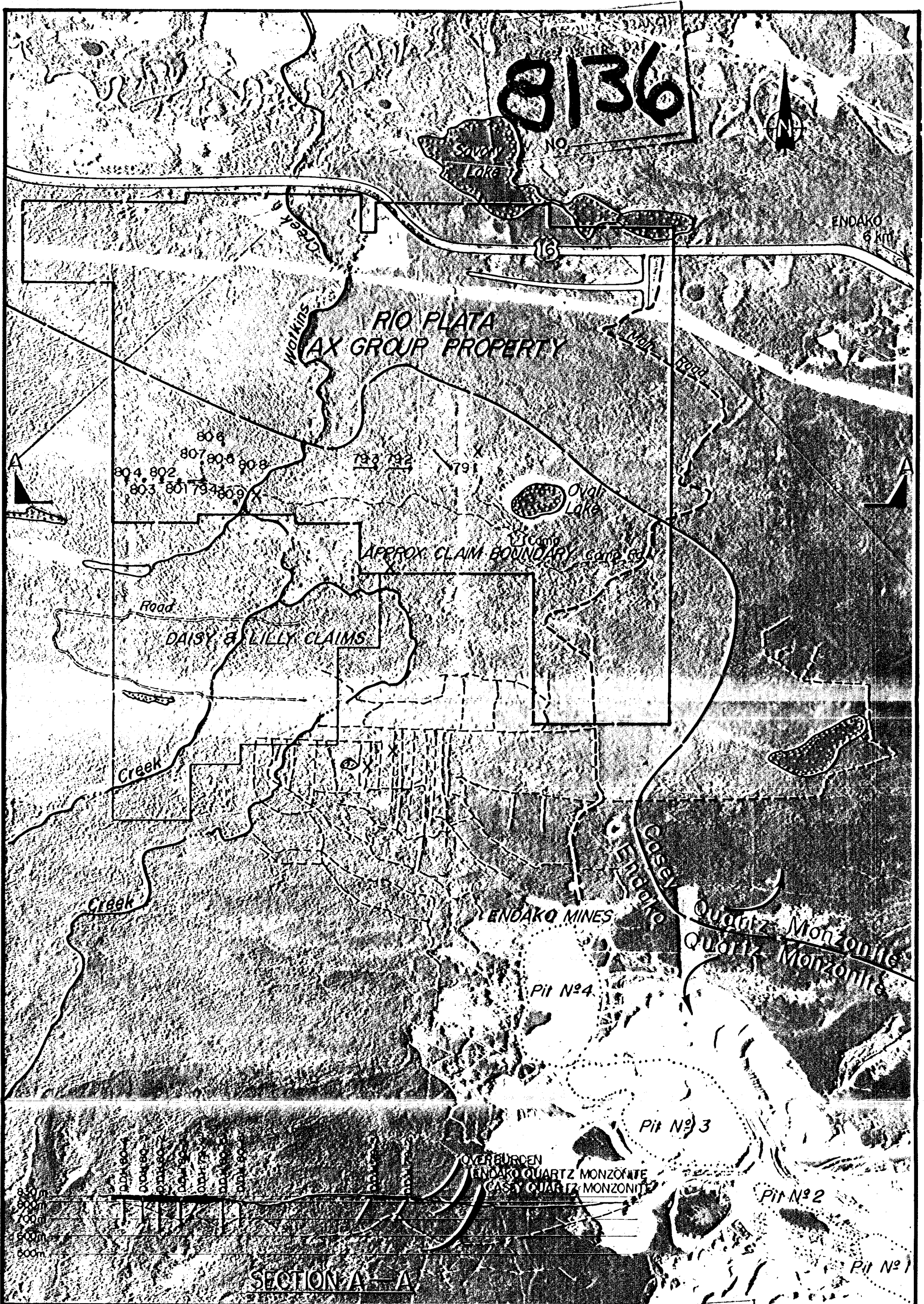




CLAIMS INFORMATION TABLE

CLAIM NAME	RECORD NO.	UNITS	GROUP	YEAR RECORDED	ANNIVERSARY DATE	EXPIRY DATE	
						BEFORE CREDITS	*AFTER CREDITS
Ax No. 1	513	8	Ax	1976	December 1	1981	1984
Ax No. 3	2029	1	Ax	1979	August 28	1982	1985
Ax No. 4	2030	1	Ax	1979	August 28	1982	1985
Jill No. 1	1088	8	Ax	1978	April 5	1982	1985
Snow No. 1	199	4	Ax	1975	December 9	1981	1984
Ax No. 2	514	8	Jen	1976	December 1	1981	1984
Ax No. 5	2031	1	Jen	1979	August 28	1982	1985
Ax No. 6	2032	1	Jen	1979	August 28	1982	1985
Jen No. 1	1108	12	Jen	1978	April 18	1982	1985

* Includes credits applied for by this report.



RIO PLATA SILVER MINES LTD.

AX & JEN Group Omineca Mining Division
 Endako, British Columbia N.T.S. 93K/3E

Approx. 1:20,000

LEGENDAL RESOURCES BRANCH
 ASSESSMENT REPORT Mo Showings

8136
 NO.

P.R.C. JUNE, 1980

Figure 2

Cochrane Consultants Limited
 4882 Delta St. Delta B.C. V4E 2T8 248 9221

D. MAGNETOMETER SURVEY

1. Field Procedure and Data Processing

The ground magnetic survey was completed with an MF-2 Fluxgate vertical component magnetometer. (see Appendix IV). Solar flare activity appeared quiet during the survey period. The operator traversed the grid areas in a series of loops, noting time and variations in readings at the same stations. The data was then corrected for diurnal variation and plotted in gammas. The frequency distribution suggested contour intervals at 0, 200 and 450 gammas.

2. Discussion of Results

The purpose of the survey was to gain possible information on the underlying lithology. Also, the ore zone at Endako Mines Ltd., is associated with magnetite and bedrock susceptibility twice the normal background. It was hoped that the magnetometer survey would help outline possible drill targets.



However, correlation between Mo content and high magnetometer readings does not appear to be significant from the drilling results to date.

D.D.H. 80-5, 80-6, 80-7, 80-1 and 79-4 were drilled in the magnetometer high area whereas 80-3, 80-4, 80-8, and 80-9 were drilled in the magnetometer low area.

Yet, 80-5 and 80-8 showed the highest Mo content of all the holes.



E. 1980 DIAMOND DRILLING

As previously mentioned, the diamond drilling was contracted to Olympic Drilling Ltd. of Coquitlam, B. C. who supplied all necessary equipment and supplies for the 4,000 ft. (1200m) minimum contract. Mr. R. Orsetti of Endako, was contracted to supply a cat for moving the drill, building access roads and drill sites (Allis Chambers TD-11). The author spotted holes, logged core, and surveyed drill hole collars. Sludge samples were collected, and stored on the property, with the core, at a site near Oval Lake. Sludges were collected at 10 ft. intervals (approximately 3 m), and most sections of core were split, double bagged, tagged and delivered by the author to Min-En Labs of North Vancouver, where they were geochemically analyzed for Mo and Cu (some samples) content in parts per million. All values over 75 ppm Mo were assayed for Mo. Sludge samples from Holes 1, 5, 8 and 9 were similarly analyzed.



F. DISCUSSION OF RESULTS - Geology and Alteration

Two phases of the Topley Intrusives have been identified in the area of investigation. The Casey quartz monzonite is intrusive into the Endako Quartz monzonite. North of the Endako Mine, the Casey-Endako contact is assumed to be vertical (personal communication - Ed Kimura, chief geologist, Endako Mines). However, in the S. W. corner of the Ax group, the 1980 diamond drilling showed that the Casey phase underlies the Endako phase. (See accompanying drill hole section)

At the Endako Mine, the orebody occurs entirely in the Endako phase. Economic mineralization is typically associated with quartz stockworks, quartz sericite "envelopes" around veinlets, - K spar and K spar-biotite envelopes.

None of these high temperature alteration phases were observed in the 1980 drill hole program on the Ax group. Instead, generally intensive argillic alteration (kaolinization,



chloritization, minor sericite, pyrite, hematite) was encountered.

The sequence of geological events appears to be roughly as follows: Endako quartz monzonite, Casey quartz monzonite, intensive hydrothermal alteration of the argillic type with some molybdenite, and finally carbonization.

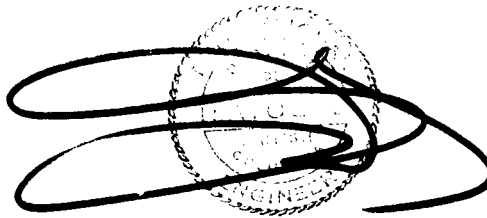
The degree of fracturing, alteration, and mineralization does not appear to be significantly different between the Endako and Casey phases. Consequently there is no reason to necessarily assume that the Endako phase is a more favourable host rock than the Casey phase. It is possible that the structural controls in the Endako Mine were more important to ore emplacement than the host rock. Another curious fact about the Endako Mine alteration is that even a few feet from the N. W. trending orebodies (particularly to the N. E.) fresh unaltered rock is encountered whereas a "pyrite zone" lies to the S. W.



G. CONCLUSIONS AND RECOMMENDATIONS

Interesting Mo mineralization was encountered in 3 out of 9 diamond drill holes on the Ax Group in the spring of 1980. However, assay results were of sub-ore grade and the distribution was erratic. The Casey quartz monzonite was found to underlie the Endako quartz monzonite. Both rock units showed pervasive and locally intensive argillic type hydro- thermal alteration. No further work is recommended at this time.

Respectfully submitted

A circular professional seal for Robert Wolfe, P. Eng., with a signature scribble over it. The seal contains the text "ROBERT WOLFE, P. ENG." and "REGISTERED PROFESSIONAL ENGINEER".

Robert Wolfe, P. Eng.,
Delta, B. C.,
June 10, 1980.



APPENDIX I

Diamond Drill Hole Logs:
D.D.H. 80-1 to D.D.H. 80-9



PROPERTY AX GROUP

Diamond Drill Record



Cochrane Consultants Limited

DIP TEST		
	Angle	
Footage	Reading	Corrected
asing	vertical	

HOLE No. 80-1 Sheet No. 1 of 7 Lat. 130m W. of 79-1 Total Depth.....163.7m (537')

Section..... Dep..... Logged By... G. H. G.....

Date Begun..... March 20/80..... Bearing..... Claim Ax No. 1

Date Finished March 23/80..... Elev. Collar. 834 m approx. Core Size N.Q.W.L.

DEPTH	DESCRIPTION	SLUDGE	SAMPLE No.	FROM	TO	WIDTH of SAMPLE
31.4m (-103')	Overburden					
31.4-34.4m (103-113')	Altered Qtz Monzonite. Endako Pink K-Feldspar plagioclase feldspar and qtz. phenocrysts up to 1 cm across set in finer gr. matrix hornblende and mica. Feldspar altered to sericite, chlorite. 80 % recovery		27407	31.4m (103')	34.4m (113')	3m (10')
34.4-39.9m (113-131')	Fine grained pink Aplite Dyke Shear zone at contact with Endako Qtz. Monzonite. Largest phenocrysts <3mm. Sericite and chlorite alteration					
39.9-48.8m (131-160')	Endako Qtz. Monzonite. large kspar Moly and pyrite disseminated at 41.5m (136') with specular hematite? (Minor Calcite) Pyrite along fractures Moly on fr. at 43.9m (144') aplite dyke at 43.9m (144') parallel to core		27408 27409	39.9m (131') 42.9m (141')	42.9m (141') 45.9m (151')	3m (10') 3m (10')

PROPERTY..... AX GROUP

DIP TEST		
Footage	Angle	
	Reading	Corrected
casing	vertical	

Diamond Drill Record



Cochrane Consultants Limited

HOLE No. 80-1 Sheet No. 2 of 7 Lat. 130m W. of 79-1 Total Depth 163.7m (537')
 Section..... Dep..... Logged By..... G. H. G.
 Date Begun..... March 20/80 Bearing..... Claim AX No. 1
 Date Finished..... March 23/80 Elev. Collar. 834 m approx. Core Size N. O. W. L

DEPTH	DESCRIPTION	SLUDGE	SAMPLE No.	FROM	TO	WIDTH of SAMPLE
	up to 45.4m (148') 80% recovery		27410	45.9m	48.8m	3m
	Rock sheared and ground. from			(151')	(160')	(10')
	(48.5m to 48.8m (158' to 160'))					
48.8-49.7m (160-163')	Pink Aplite Dyke. with large blebs of calcite along fractures		27411	48.8m (160')	49.7m (163')	1.1m (3')
49.7-57.3m -	Endako Qtz. Monzonite - pink kspar plagioclase feldspar and quartz phenocrysts up to 1cm with minor biotite books and hornblende		27412	49.7m (168')	52.7m (173')	3m (5')
	Alteration minerals sericite, chlorite and calcite.		27413	52.7m (173')	55.8m (183')	3m (10')
	Moly diss. on fractures at 51.7m (169.5') 6" aplite dyke at 55.2m (181') calcite blebs on fractures in dyke		27414	55.8m (183')	57.3m (188')	1.5m (5')
57.3-58.2m	sheared zone brecciated and cemented with calcite and chlorite and talc		27415	57.3m (187.9')	58.2m (190.9')	.9m (3')

PROPERTY AX GROUP

Diamond Drill Record



Cochrane Consultants Limited

DIP TEST		
Footage	Angle	
	Reading	Corrected
casing	vertical	

HOLE No. 80-1... Sheet No. 3 of 7... Lat 130m W. 79-1... Total Depth 163.7m (537')
 Section..... Dep..... Logged By G. H. G.
 Date Begun March 20/80... Bearing..... Claim AX No. 1
 Date Finished March 23/80... Elev. Collar 834m approx. Core Size N. Q. W. L.

DEPTH	DESCRIPTION	SLUDGE	SAMPLE No.	FROM	TO	WIDTH of SAMPLE
58.2-124.4m	Altered Endako Qtz. Monzonite - Shear with chlorite and calcite at 58.7-59m (192-193.5') thin calcite stringer		27416	58.2m (191')	61.2m (201')	3m (10')
	Moly on fracture at 64.6m (212'). Sparse pyrite diss. through QM		27417	64m (210')	67m (220')	3m (10')
	Fragments of fine grained intrusive (probably Qtz. Diorite) at 69.8m (229') fragments up to 5cm across) Pyrite seems to be secondary alteration of mafics along with chlorite. thin chlorite and calcite veinlets <1cm approx. perpendicular to core from 74.7-76.8m (245-252')		27418	73.1m (240')	76.1m (250')	3m
	Moly diss. at 78.9m (259')		27419	76.1m (250')	79.1m (260')	3m (10')

PROPERTY..... AX GROUP

Diamond Drill Record



Cochrane Consultants Limited

DIP TEST		
Footage	Angle	
	Reading	Corrected
casing	vertical	

HOLE No. 80-1 Sheet No. 4 of 7 Lot 130m W. 79-1 Total Depth 163.7m (537')
 Section..... Dep..... Logged By..... G. H. G.
 Date Begun..... March 20/80..... Bearing..... Claim AX No. 1
 Date Finished..... March 23/80..... Elev. Collar 834 m approx. Core Size N. Q. W. L.

DEPTH	DESCRIPTION	SLUDGE	SAMPLE No.	FROM	TO	WIDTH of SAMPLE
	Moly on fractures at 82.9m (272') and small veinlet 3mm wide		27420	82.3m (270')	85.3m (280')	3m (10')
	Slickensides on talcous fractures at 84.1m (276')					
	Shear Zone at 89.6-90.2m (294-296') much crumbled rock.					
	Pyrite diss. and in then fractures at 88.7m (291;)					
	Section from 89.3-92.3m (293-303') about 60% recovery. Shear from 89.6-92.3m (294-303')		27421	91.5m (300')	94.5m (310')	3m (10')
	From 303 to 320', 80% recovery					
	Moly diss. at 98.2m (322') with pyrite		27422	97.5m (320')	100.6m (330')	3m (10')
	Rock fragments at 108.2m (355') approx. 5cm across another at 109.7m (360') about 4 x 7cm		27423	106.7m (350')	109.7m (160')	3m (10')

PROPERTY AX GROUP

Diamond Drill Record



Cochrane Consultants Limited

DIP TEST		
Footage	Angle	
	Reading	Corrected
casing	vertical	

HOLE No. 80-1 Sheet No. 5 of 7 Lat. 130m W. 79-1 Total Depth 163.7m (537')

Section..... Dep..... Logged By G. H. G.

Date Begun March 20/80 Bearing..... Claim Ax No. 1

Date Finished March 23/80 Elev. Collar 834 m approx. Core Size N. Q. W. L.

DEPTH	DESCRIPTION		SAMPLE No.	FROM	TO	WIDTH of SAMPLE
	Moly and pyrite diss. at 111.6m (366')	SLUDGE	27424	109.7m	112.8m	3m
	magnetite finely diss.			(360')	(370')	(10')
	Calcite and chlorite veinlets from					
	120.1m (394')		27425	118.9m	121.9m	3m
				(390')	(400')	(10')
124-141m	At 124.4m (395') contact between					
	Endako QM and intensely altered		27489	121.9m	125m	3m
	zone (poss. casey QM) contact at			(400')	(410')	(10')
	about 70, to core axis chlorite					
	and talc along contact. Reddish		27490	125m	128m	3m
	mineral in veinlets (poss. hematite)			(410')	(420')	(10')
	Moly diss. at 121.6m (399')					
	Calcite and chlorite veinlets		27491	134.1m	137.2m	3m
	throughout section most less			(440')	(450')	(10')
	than 2mm wide. 134.1-137.2m					
	(440-450') fractures at 45° to C/A					

PROPERTY AX GROUP

Diamond Drill Record



Cochrane Consultants Limited

DIP TEST		
	Angle	
Footage	Reading	Corrected
casing	vertical	

HOLE No. 80-2 Sheet No. 1 of 6 Lat. 100m W. 80-1 Total Depth 197.5m (648')

Section Dep. Logged By G. H. G.

Date Begun March 24/80 Bearing Claim Ax. No. 1

Date Finished March 26/80 Elev. Collar 833 m approx. Core Size N.Q.W.L.

DEPTH	DESCRIPTION	SLUDGE	SAMPLE No.	FROM	TO	WIDTH of SAMPLE
0-24.7m (0-81')	Overburden					
24.7-36.3m	Altered Endako Quartz Monzonite		27497	25m	28m	3m
	Large (up to 1cm) phenocrysts of K			(82')	(92')	(10')
	Feldspar plagioclase feldspar and					
	quartz fragments of fine grained		27498	34.1m	37.1m	3m
	intrusive up to 2cm across. Minor			(112')	(122')	(10')
	hornblende and biotite. Mafics					
	altered to chlorite pyrite and some		27499	40.2m	43.2m	3m
	magnetite. Feldspars altered to			(132')	(142')	(10')
	sericite. Calcite veinlets <1mm filling					
	fractures. Pyrite also filling					
	fractures. At 32.3m (106') pink					
	aplite dyke about 5cm wide cuts core					
	at about 60° to C/A.					
	Shears at 32m (105') and 33.8m					
	(222'). 80% core recovery					
36.3-86.3m (119-283')	Fresher more competent Endako QM					
	90% core recovery at 39.6m (130') large					

PROPERTY AX GROUP

DIP TEST		
Footage	Angle	
	Reading	Corrected
casing	vertical	

Diamond Drill Record



Cochrane Consultants Limited

HOLE No. 80-2 Sheet No. 2 of 6 Lot. 100m W. 80-1
 Section..... Dep.....
 Date Begun March 24/80 Bearing.....
 Date Finished March 26/80 Elev. Collar 833m approx.

Total Depth 197.5m (648')
 Logged By G. H. G.
 Claim Ax No. 1
 Core Size N. Q. W. L.

DEPTH	DESCRIPTION	SLUDGE	SAMPLE No.	FROM	TO	WIDTH of SAMPLE
	(6cm) fragments of fine grained		27500	46.3m	49.4m	3m
	(salt and pepper texture) intrusive.			(152')	(162')	(10')
	(qtz. diorite?). Moly on fracture					
	at 41.2m (135'). Fine grained pink		27672	54.4m	57.4m	3m
	apilite dykes at 48, 48.2, 49.2m			(172')	(182')	(10')
	(157.5, 158, 161.5') up to 40cm wide.					
	Dykes cut by thin calcite stringers.		27673	58.5m	61.5m	3m
	Contacts approx. perpendicular to C/A			(192')	(202')	(10')
	Section 172 to 184 broken and poorer					
	recovery approx. 80%.		27674	64.6m	67.6m	3m
	Back to 95% core recovery			(212')	(222')	(10')
	Then veinlets with talc, chlorite		27675	70.7m	73.7m	3m
	and pyrite all through this section			(232')	(242')	(10')
	Moly in fractures starting 71.9m (236')		27526	73.7m	76.7m	3m
	for about 30cm			(242')	(252')	(10')
	Moly at 74.8m (245.5')					

PROPERTY AX GROUP

DIP TEST		
Footage	Angle	
	Reading	Corrected
casing	vertical	

Diamond Drill Record



Cochrane Consultants Limited

HOLE No. 80-2 Sheet No. 3 of 6 Lat. 100m W. 80-1 Total Depth 197.5m (648')
 Section Dep. Logged By G. H. G.
 Date Begun March 24/80 Bearing Claim AX No. 1
 Date Finished March 26/80 Elev. Collar 833m approx. Core Size N. Q. W. L.

DEPTH	DESCRIPTION	SLUDGE	SAMPLE No.	FROM	TO	WIDTH of SAMPLE
	Alteration intensily increasing but still Endako QM		27527	79.9m (262')	82.9m (272')	3m (10')
86.3-87.5 (283-287')	Intense alteration zone or shear with talc chlorite, calcite forming around brecciated fragments - calcite blebs poss.		27528	82.9m (272')	85.9m (282')	3m (10')
	cavity filling - Contact about 45, C/A		27529	85.9m (282')	87.5m (287')	1.6m (5')
87.5-89.0m (287-292')	Altered Endako Quartz Monzonite - calcite and chlorite veinlets throughout section		27530	87.5m (287')	89.0m (292')	1.5m (5')
89.0-104m (292-341')	Finer grained intrusive (Casey?) - specular hemitite diss. - calcite veinlets up to 1cm - much harder and more competent 95% core recovery - more k feldspar but smaller grain size.		27531	89.0m (292')	92.0m (302')	3m (10')
			27532	95.0m (312')	98.1m (322')	3m (10')
			27533	101.2m (332')	104.2m (342')	3m (10')

PROPERTY AX GROUP

Diamond Drill Record



Cochrane Consultants Limited

DIP TEST		
Footage	Angle	
	Reading	Corrected
casing	vertical	

HOLE No. 80-2 Sheet No. 4 of 6 Lat. 100m W. 80-1 Total Depth 197.5m (648')
 Section..... Dep..... Logged By G. H. G.
 Date Begun March 24/80 Bearing..... Claim AX No. 1
 Date Finished March 26/80 Elev. Collar 833m approx. Core Size N. O. W. L.

DEPTH	DESCRIPTION	SLUDGE	SAMPLE No.	FROM	TO	WIDTH of SAMPLE
104-197.5m	Altered Casey Quartz Monzonite					
341-648')	-phenocrysts up to 1cm of Keldspar		27534	107.3m	110.4m	3m
	-quartz			(352')	(362')	(10')
	106.7-121.9m (350-400') Badly fractured and broken up					
	Shear zone and poor recovery		27535	113.4m	116.4m	3m
	113.4-114m (372-374') 60% recovery			(372')	(382')	(10')
			27536	119.5m	122.5m	3m
				(392')	(402')	
			27537	125.6m	128.6m	3m
				(412')	(422')	(10')
			27538	131.7m	134.7m	3m
				(432')	(442')	(10')
	Moly on fractures at 138.4m (454')		27539	137.8m	140.8m	3m
				(452')	(462')	(10')

PROPERTY AX GROUP

Diamond Drill Record



Cochrane Consultants Limited

DIP TEST		
Footage	Angle	
	Reading	Corrected
casing	vertical	

HOLE No. 80-2 Sheet No 5 of 6 Lot. 100m W. 80-1 Total Depth 197.5m (648')
 Section..... Dep..... Logged By G. H. G.
 Date Begun March 24/80 Bearing..... Claim AX No. 1
 Date Finished March 26/80 Elev. Collar 833m approx. Core Size N. Q. W. L.

DEPTH	DESCRIPTION	SLUDGE	SAMPLE No.	FROM	TO	WIDTH of SAMPLE
			27540	143.9m	146.9m	3m
				(472')	(482')	(10')
			27541	150m	153m	3m
				(492')	(502')	(10')
			27542	156.1m	159.1m	3m
				(512')	(522')	(10')
	Moly in fractures (very thin)		27543	162.2m	165.2m	3m
	at 163.1m (535')			(532')	(542')	(10')
	Shear and intense alteration zone		27544	168.3m	171.3m	3m
	at 163.1-163.7m (535-537')			(552')	(562')	(10')
			27545	176m	179m	3m
				(572')	(582')	(10')
			27546	180.5m	183.5m	3m
				(592')	(602')	(10')

PROPERTY AX GROUP

Diamond Drill Record



Cochrane Consultants Limited

DIP TEST		
Footage	Angle	
	Reading	Corrected
casing	vertical	

HOLE No. 80-3 Sheet No. 1 of 5 Lat. 100m W. 80-2 Total Depth. 154.2m (506')

Section Dep. Logged By G. H. G.

Date Begun March 26/80 Bearing Claim AX No. 1

Date Finished March 29/80 Elev. Collar. 832m approx Core Size N.O.W.L.

DEPTH	DESCRIPTION	SLUDGE	SAMPLE No.	FROM	TO	WIDTH of SAMPLE
0-24.4m (0-80')	Overburden					
24.4-52.4m (80-172')	Endako Quartz Monzonite		27501	24.4m	27.4m	3m
	-Large (up to 1cm) phenocrysts or of K feldspar, plagioclase and quartz with smaller matrix of same minerals and hornblende and small books of biotite			(80')	(90')	(10')
	-broken up approx. 85% recovery		27502	30.5m	33.5m	3m
	-section 27.4-29.6m (90-97') 50% core recovery			(100')	(110')	(10')
	-fragments of fine grained biotite rich qtz diorite up to 7cm wide					
	-chlorite along fractures					
	-pink fine grained aplite dyke at 30.8m (101') approx. 10cm wide					
	-pyrite along fractures at 31.1m (102')					
	-calcite veinlets up to 1cm filling fractures					
	-hematite also spread along fracture					

PROPERTY AX GROUP

Diamond Drill Record



Cochrane Consultants Limited

DIP TEST		
Footage	Angle	
	Reading	Corrected
casing	vertical	

HOLE No. 80-3 Sheet No. 2 of 5 Lat. 100m W. 80-2
 Section Dep
 Date Begun March 26/80 Bearing
 Date Finished March 29/80 Elev. Collar 832m approx.

Total Depth 154.2m (506')
 Logged By G. H. G.
 Claim AX No. 1
 Core Size N O W T

DEPTH	DESCRIPTION	SLUDGE	SAMPLE No.	FROM	TO	WIDTH of SAMPLE
	from 35.7-36.9m (117-121'). 50%		27503	36.6m	39.6m	3m
	recovery section 37.5-43.9m (123-144')			(120')	(130')	(10')
	about 80% core recovery					
	Calcite stringers increase from		27504	42.6m	45.7m	3m
	45.7-48.8m (150-160'). Pyrite also			(140')	(150')	(10')
	increases along fractures 48.7-49.0m					
	(159-161') rock very blocky.		27505	48.8m	51.8m	3m
				(160')	(170')	(10')
52.4-53.8m	Poss. shear zone. Chlorite breccia					
	-chlorite cements grey green fragments		27506	51.8m	52.4m	.6m
	-large calcite vein 2cm wide.			(170')	(172')	(2.5')
53.8-54.6m	Altered Endako Quartz Monzonite		27507	52.4m	53.8m	1.4m
	calcite stringers pyrite diss.			(172')	(176.5')	(3.5')
	and on fracture abundant chlorite					
	Contact approx. perpendicular to C/A		27508	53.8m	54.5m	.7m
				(176.5')	(179')	(2.5')
			27509	54.6m	55.0m	.4m
				(179')	(180.5')	(4.5')

PROPERTY..... AX GROUP.....

Diamond Drill Record



Cochrane Consultants Limited

DIP TEST		
Footage	Angle	
	Reading	Corrected
CASING	VERTICAL	

HOLE No. 80-3 Sheet No. 3 of 5 Lat. 100m W. 80-2 Total Depth 154.2m (506')

Section..... Dep..... Logged By..... G. H. G.

Date Begun March 26/80 Bearing..... Claim AX No. 1

Date Finished March 29/80 Elev. Collar 832m approx. Core Size N.Q.W.L.

DEPTH	DESCRIPTION	SLUDGE	SAMPLE No.	FROM	TO	WIDTH of SAMPLE
54.6-55.0m	Altered Casey OM poss. a pendent EQM seems to flow into casey fractures					
55.0-55.8m (180.5-183')	Intensely Altered Endako OM -calcite and chlorite fracture filling veinlets -chlorite all through matrix		27510	55m (180.5')	55.8m (183')	.8m (2.5')
55.8-61.6m (183-202')	Casey Quartz Monzonite -altered zone -moly on fractures 56.1-57m (184-187')		27511	55.8m (183')	58.8m (193')	3m (10')
	-talcous chlorite mush		27512	58.8m (193')	61.9m (203')	3m (10')
61.6-154.2m (202-506')	Casey Quartz Monzonite smaller crystal size than E.Q.M. (<3 mm) less hornblende -chlorite and hematite - filled fractures at all angles to core >90% core recovery		27513	61.9m (203')	64.9m (213')	3m (10')
			27514	68m (223')	71m (233')	3m (10')

PROPERTY AX GROUP

Diamond Drill Record



Cochrane Consultants Limited

DIP TEST		
		Angle
Footage	Reading	Corrected
casing	vertical	

HOLE No. 80-3 Sheet No. 4 of 5 Lat. 100m W. 80-2
 Section..... Dep.....
 Date Begun..... March 26/80..... Bearing.....
 Date Finished..... March 29/80..... Elev. Collar. 832m approx.

Total Depth 154.2m (506')
 Logged By G. H. G.
 Claim AX No. 1
 Core Size N.Q.W.L.

DEPTH	DESCRIPTION	SLUDGE	SAMPLE No.	FROM	TO	WIDTH of SAMPLE
			27515	74.1m (243')	77.1m (253')	3m (10')
			27516	80.2m (263')	83.2m (273')	3m (10')
			27517	86.2m (283')	89.3m (293')	3m (10')
			27518	92.4m (303')	95.4m (313')	3m (10')
			27519	98.5m (323')	101.5m (333')	3m (10')
			27520	104.5m (343')	107.6m (353')	3m (10')
			27521	110.7m (363')	113.7m (373')	3m (10')

PROPERTY AX GROUP

Diamond Drill Record



Cochrane Consultants Limited

DIP TEST		
	Angle	
Footage	Reading	Corrected
casing	vertical	

HOLE No. 80-3 Sheet No. 5 of 5 Lat. 100m W. 80-2 Total Depth 154.2m (506')
 Section..... Dep..... Logged By..... G. H. G.
 Date Begun..... March 26/80 Bearing..... Claim AX No. 1
 Date Finished..... March 29/80 Elev. Collar. 832m approx. Core Size N.Q.W.L.

DEPTH	DESCRIPTION	SLUDGE	SAMPLE No.	FROM	TO	WIDTH of SAMPLE
			27522	116.7m (383')	119.7m (393')	3m (10')
			27523	122.9m (403')	125.9m (413')	3m (10')
			27524	128.9m (423')	131.9m (433')	3m (10')
	Lost core from 130.1m-135.0m (427-443') 25% core recovery					
	rock not especially broken or faulted		27525	135.1m (443')	138.1m (453')	3m (10')
			17001	141.1m (463')	144.2m (473')	3m (10')
			17002	147.3m (483')	150.3m (493')	3m (10')
			17003	151.2m (496')	154.2m (506')	3m (10')
	END HOLE					

PROPERTY AX GROUP

Diamond Drill Record



Cochrane Consultants Limited

DIP TEST		
Footage	Angle	
	Reading	Corrected
casing	vertical	

HOLE No. 80-4 Sheet No. 1 of 6 Lat. 200 N. Total Depth 140.5m (461')
 Section..... Dep. 1950 W. Approx. Logged By..... G. H. G.
 Date Begun March 29/80 Bearing..... Claim AX No. 1
 Date Finished..... March 31/80 Elev. Collar..... 833m approx. Core Size..... N. Q. W. L.

DEPTH	DESCRIPTION	SLUDGE	SAMPLE No.	FROM	TO	WIDTH of SAMPLE
0-15.5m (0-51')	Overburden					
15.5-19.1m (51-62.5')	Endako Quartz Monzonite up to 1cm phenocrysts of K-spar, plagioclase and Qtz. Smaller crystals of above along with biotite and hornblende in matrix. Feldspar altered to greenish sericite. Small inclusions of fine grained qtz. diorite. Pyrite diss. (minor)		17004	15.5m (51')	18.5m (61')	3m (10')
19.1-19.2m	Pink Fine Grain Aplite Dyke (approx. 25cm wide) contacts approx. perp. to core axis. Fractures cut both E.Q.M. and dyke.					
19.2-22.8m (63-75')	Endako Quartz Monzonite		17005	21.6m (71')	24.6m (81')	3m (10')



PROPERTY AX GROUP

Diamond Drill Record

Cochrane Consultants Limited

DIP TEST		
Footage	Angle	
	Reading	Corrected
casing	vertical	

HOLE No. 80-4 Sheet No. 2 of 6 Lat. 200 N. Total Depth 140.5m (461')
 Section Dep. 1950 W. approx. Logged By G. H. G.
 Date Begun March 29/80 Bearing Claim Ax No. 1
 Date Finished March 31/80 Elev. Collar 833m approx. Core Size N.Q.W.L.

DEPTH	DESCRIPTION	SLUDGE	SAMPLE No.	FROM	TO	WIDTH of SAMPLE
22.8-23.2m	Shear Zone - E.O.M. intensely altered to chlorite, talc, kaolionite etc.					
23.2-29.1m (76-95.5')	Endako Quartz Monzonite Good recovery >95% broken and fractured zone 28-28.3m (92'93')		17006	27.7m (91')	29.1m (95.5)	1.4m (4.5')
29.1-32.9m (95.5-108')	dark green to black fine grained dyke (contact approx. 60° to core axis) Call it Lamprophyre Dyke Calcite and chlorite filling thin fractures. Pyrite diss. and along fractures approx. 85% core recovery Pinkish gouge along contact		17007	29.1m (95.5')	32.9m (108')	3.8m (2.5')
32.9-39.0m (108-128')	Endako Quartz Monzonite		17008	32.9m (108')	35.9m (118')	3m (10')

PROPERTY AX GROUP

Diamond Drill Record



Cochrane Consultants Limited

DIP TEST		
Footage	Angle	
	Reading	Corrected
casing	vertical	

HOLE No. 80-4 Sheet No. 3 of 6 Lat. 200 N. Total Depth 140.5m (461')
 Section Dep. 1950 W. approx. Logged By G. H. G.
 Date Begun March 29/80 Bearing Claim Ax No. 1
 Date Finished March 31/80 Elev. Collar 833m approx. Core Size N.O.W.L.

DEPTH	DESCRIPTION	SLUDGE	SAMPLE No.	FROM	TO	WIDTH of SAMPLE
39.0-40.1m (128-131.6')	Intense alteration on contact zone chlorite, calcite, iron oxides, poss, kaolinite		17009	39.0m (128')	42.0m (138')	3m (10')
40.1-46.9 (131.6-154')	Altered Casey Qtz. Monzonite -chlorite, sericite, calcite alteration with hematite on fractures → 95% core recovery intensely fractured - non magnetic		17010	45.1m (148')	46.9m (154')	1.8m (6')
46.9-50.9m (154-167')	Lamp dyke weakly magnetic - chloritized filled with calcite (locally intensive) 100% core recovery. Phenocrysts, completely replaced by calcite.					
50.9-66.8m (167-219')	Altered Casey QM - intensely fractured chlorite - sericite - calcite - at 54m (177') 1' section of lamp-		17011	50.9m (167')	53.9m (177')	3m (10')
	dyke completely chloritized in contact with Casey Quartz Monzonite		17012	57.0m (187')	60.0m (197')	3m (10')

PROPERTY AX GROUP

Diamond Drill Record



Cochrane Consultants Limited

DIP TEST		
Footage	Angle	
	Reading	Corrected
casing	vertical	

HOLE No. 80-4 Sheet No. 4 of 6 Lat. 200 N. Total Depth 140.5m (461')
 Section Dep. 1950 W. approx. Logged By G.H.G/R.W.
 Date Begun March 29/80 Bearing Claim AX No. 1
 Date Finished March 31/80 Elev. Collar 833m approx. Core Size N.Q.W.L.

DEPTH	DESCRIPTION	SLUDGE	SAMPLE No.	FROM	TO	WIDTH of SAMPLE
	0° to C/A. 100% core recovery		17013	63.1m	66.1m	3m
				(207')	(217')	(10')
66.8-69.3m (219-227.5')	Lamp dyke weakly magnetic calcite in fractures. core recovery 100% chloritized pervasively phenocrysts replaced by calcite					
69.4-75.6m (227.5-248')	Altered Casey QM as before intense sericitization and kaolinization (?)		17014	69.5m	72.5m	3m
	74.1-75.6m (243-248')			(228')	(238')	(10')
75.6-77.1m (248-253')	Lamp dyke - calcite in fractures phenocrysts replaced pervasive chloritization - contact at 77.1m (253')					
	0° to C/A					
77.1-85.8m (253-281.5')	Altered Casey QM intensely sheared and fractured calcite in fractures and chlorite		17015	77.1m	80.1m	3m
				(253')	(263')	(10')

PROPERTY AX GROUP

Diamond Drill Record



Cochrane Consultants Limited

DIP TEST		
	Angle	
Footage	Reading	Corrected
casing	vertical	

HOLE No. 80-4 Sheet No. 5 of 6 Lat. 200 N. Total Depth 140.5m (461')

Section Dep. 1950 W. approx. Logged By G.H.G./R.W.

Date Begun March 29/80 Bearing Claim AX No. 1

Date Finished March 31/80 Elev. Collar 833m approx. Core Size N.Q.W.L.

DEPTH	DESCRIPTION	SLUDGE	SAMPLE No.	FROM	TO	WIDTH of SAMPLE
85.8-87.8m (281.5-288')	Lampdyke intensely fractured and chloritized calcite as before - weakly magnetic					
87.8-140.5m (288-461')	Altered Casey QM chlorite in fractures and calcite. Core recovery close to 100%		17016	87.8m (288')	90.8m (298')	3m (10')
	91.7-92.3m (301-303') intense shearing and chloritization non magnetic pyrite extremely rare.		17017	93.9m (308')	96.9m (318')	3m (10')
	at 112.5m - pegmatitic texture (qtz and pink k-spar) at 133.2m (437') - small fracture at 30° to C/A filled with pyrite		17018	100m (328')	103m (338')	3m (3m)
	alteration and fracturing less intense from 133.2m (437')		17019	106.1m (348')	109.1m (358')	3m (10')
			17020	112.2m (368')	115.2m (378')	3m (10')
			17021	118.3m (388')	121.3m (398')	3m (10')

PROPERTY..... AX GROUP.....

Diamond Drill Record



Cochrane Consultants Limited

DIP TEST		
Footage	Angle	
	Reading	Corrected
casing	vertical	

HOLE No. 80-5..... Sheet No. 1 of 9 Lat. 300 N. Total Depth. 193m (633')
 Section..... Dep. 1450 W. approx. Logged By R. W.
 Date Begun April 1/80 Bearing..... Claim AX No. 1
 Date Finished April 4/80 Elev. Collar. 821m approx. Core Size N. Q. W. L.

DEPTH	DESCRIPTION	SAMPLE No.	FROM	TO	WIDTH of SAMPLE
0-7.3m (0-24')	Overburden				
7.3-26.5m	Endako Q.M. slightly altered some fractures - various angles calcite in fractures - some chlorite - minor pyrite	17025	7.3m (24')	10.4m (34')	3m (10')
	Magnetite diss. and replacing mafics Several 5' sections of solid core occasional bleb of translucent amber mineral (?) diamond shaped frequently altered to a powdery yellow- buff (sphene?) some shearing at 22.6m	17026	13.4m (44')	16.4m (54')	3m (10')
	(74') calcite on fractures at 31.7m (104') MoS ₂ in sheared area	17027	19.5m (64')	22.5m (74')	3m (10')
		17028	25.6m (84')	28.6m (94')	3m (10')
		17029	28.6m (94')	31.6m (104')	3m (10')
		17030	31.7m (104')	34.7m (114')	3m (10')

PROPERTY..... AX GROUP.....

Diamond Drill Record



Cochrane Consultants Limited

DIP TEST		
Footage	Angle	
	Reading	Corrected
casing	vertical	

HOLE No. 80-5 Sheet No. 2 of 9 Lat. 300 N. Total Depth 193m (633')
 Section Dep. 1450 W. approx. Logged By R. W.
 Date Begun April 1/80 Bearing Claim Ax No. 1
 Date Finished April 4/80 Elev. Collar 821m approx. Core Size N.Q.W.L.

DEPTH	DESCRIPTION	SAMPLE No.	FROM	TO	WIDTH of SAMPLE
26.5-40.8m	Endako Quartz Monzonite	17031	37.8m	40.8m	3m
(87-134')	More fractures - more pyrite		(134')	(134')	(10')
40.8-78.3m	Endako Quartz Monzonite	17032	40.8m	43.9m	3m
(134-257')	Intensive shearing - alteration		(134')	(144')	(10')
	43m (141') - MoS ₂ on fracture				
	(crumbly section)	17033	43.9m	46.9m	3m
	chloritization - sericitization -		(144')	(154')	(10')
	calcite - magnetite - kaolinitization				
	talc?	17034	46.9m	50m	3m
	occasionally more competent and less		(154')	(164')	(10')
	altered sections 1'-2' wide				
	throughout section, evidence of	17035	50m	53m	3m
	slickensides on fractures		(164')	(174')	(10')
		17036	53m	56m	3m
			(174')	(184')	(10')
		17037	56.1m	59.1m	3m
			(184')	(194')	(10')

PROPERTY.....AX GROUP.....

Diamond Drill Record



Cochrane Consultants Limited

DIP TEST		
Footage	Angle	
	Reading	Corrected
CASING	VERTICAL	

HOLE No. 80-5 Sheet No. 3 of 9 Lat. 300 N. Total Depth 193m (633')

Section Dep. 1450 W. approx. Logged By R. W.

Date Begun April 1/80 Bearing Claim AX No. 1

Date Finished April 4/80 Elev. Collar 821m approx. Core Size N.O.W.L.

DEPTH	DESCRIPTION	SAMPLE No.	FROM	TO	WIDTH of SAMPLE
		17038	59.1m	62.2m	3m
			(194')	(204')	(10')
		17039	62.2m	65.2m	3m
			(204')	(214')	(10')
		17040	65.2m	68.2m	3m
			(214')	(224')	(10')
		17041	68.3m	71.3m	3m
			(224')	(234')	(10')
		17042	71.3m	74.4m	3m
			(234')	(244')	(10')
	at 74.4m (244') - MoS ₂ on fracture	17043	74.4m	77.4m	3m
	in extremely altered material (soft		(244')	(254')	(10')
	crumbly) at 75m (246') MoS ₂ seams				
	2-3mm wide. 30° to C/A.	17044	77.4m	80.5m	3m
			(254')	(264')	(10')

PROPERTY.....AX GROUP.....

Diamond Drill Record



Cochrane Consultants Limited

DIP TEST		
Footage	Angle	
	Reading	Corrected
casing	vertical	

HOLE No. 80-5 Sheet No. 4 of 9 Lat. 300 N. Total Depth. 193m (633')
 Section..... Dep. 1450 W. approx. Logged By..... R. W.
 Date Begun..... April 1/80 Bearing..... Claim Ax No. 1
 Date Finished..... April 4/80 Elev. Collar. 821m approx. Core Size N.Q.W.L.

DEPTH	DESCRIPTION	SAMPLE No.	FROM	TO	WIDTH of SAMPLE
28.3-96.9m (257-318')	Endako Q. M. less alteration-rock more competent 82.9-83.2m (272-273')	17045	80.5m (264')	83.5m (274')	3m (10')
		17046	83.5m (274')	86.5m (284')	3m (10')
		17047	86.5m (284')	89.6m (294')	3m (10')
		17048	89.6m (294')	92.6m (304')	3m (10')
		17049	92.6m (304')	95.7m (314')	3m (10')
96.9-99.7m	Endako O. M. Highly altered-sheared- crumbly at 96.9m (318') pale green talc in fracture 0° to C/A MoS ₂ and pyrite in microfractures 96.9m (318') to 98.8m (324') also in 5mm qtz vein 45° to C/A contact	17050	95.7m (314')	98.8m (324')	3m (10')

PROPERTY AX GROUP

Diamond Drill Record



Cochrane Consultants Limited

DIP TEST		
Footage	Angle	
	Reading	Corrected
casing	vertical	

HOLE No. 80-5 Sheet No. 5 of 9 Lot 300 N. Total Depth 193m (633')
 Section Dep. 1450 W. approx. Logged By R. W.
 Date Begun April 1/80 Bearing Claim AX No. 1
 Date Finished April 4/80 Elev. Collar 821m approx. Core Size N.Q.W.L.

DEPTH	DESCRIPTION	SAMPLE No.	FROM	TO	WIDTH of SAMPLE
	with Endako Q M very indistinct	17051	98.8m	101.8m	3m
			(324')	(334')	(10')
99.7-101.8m (327-334')	Endako Q. M. alteration less intense rock more competent				
101.8-152.4m (334-500')	Endako Q M Highly altered - chlorite - talc in fractures/blocky to 104.2m (342') - softer thereafter	17052	101.8m	104.8m	3m
	at 103.6m (340') chalcopryrite-bonite-		(334')	(344')	(10')
	MoS ₂ over 6" of microfractures	17053	104.8m	107.8m	3m
	no magnetite, at 107.3m (352') pale		(344')	(354')	(10')
	green 5mm siliceous veinlet	17054	107.9m	110.9m	3m
	also pink aplite (?) "veinlets"		(354')	(364')	(10')
	1-2cm wide. 45 to C/A with qtz.				
	phenocrysts - calcite throughout	17055	110.9m	114.0m	3m
	at 109.4m (359') pyrite and MoS ₂		(364')	(374')	(10')
	on fracture (minor)				
		17056	114m	117m	3m
			(374')	(384')	(10')

PROPERTY...AX GROUP

Diamond Drill Record



Cochrane Consultants Limited

DIP TEST		
Footage	Angle	
	Reading	Corrected
casing		

HOLE No. 80-5 Sheet No. 7 of 9 Lat. 300 N. Total Depth 193m (633')
 Section Dep. 1450 W. approx. Logged By R.W.
 Date Begun April 1/80 Bearing Claim AX No. 1
 Date Finished April 4/80 Elev. Collar 821m approx. Core Size N.O.W.L.

DEPTH	DESCRIPTION	SAMPLE No.	FROM	TO	WIDTH of SAMPLE
	at 139m (456') MoS ₂ in seam 1-2mm	17064	138.4m	141.4m	3m
	at 140.8m (462') MoS ₂ in seam		(454')	(464')	(10')
	45° to C/A				
		17065	141.4m	144.5m	3m
			(464')	(474')	(10')
		17066	144.5m	147.5m	3m
			(474')	(484')	(10')
	at 148.4m (487') MoS ₂ on fracture 1mm	17067	147.5m	150.6m	3m
	45 to C/A		(484')	(494')	(10')
	148.6m (487.5') MoS ₂ blebs slickensided				
	on fracture 30° to C/A				
152.4-192.9m (55-633')	Casey Quartz Monzonite Intensely	17068	150.6m	153.6m	3m
	Altered- crumbly - bleached		(494')	(504')	(10')
	kaolinization-sericitization-some				
	chlorite. Calcite throughout-no	17069	153.6m	156.7m	3m
	magnetite, at 156.4m (516') minor platy		(504')	(514')	(10')
	blebs of MoS ₂ in fracture 30° to C/A				
	at 157.9m (518') graphite (?) in				

PROPERTY.....AX GROUP.....

Diamond Drill Record



Cochrane Consultants Limited

DIP TEST		
Footage	Angle	
	Reading	Corrected
casing	vertical	

HOLE No. 80-5 Sheet No. 8 of 9 Lat. 300 N. Total Depth. 193m (633')

Section..... Dep. 1450 W. approx. Logged By. R. W.

Date Begun. April 1/80 Bearing..... Claim Ax No. 1

Date Finished. April 4/80 Elev. Collar. 821m approx. Core Size N.Q.W.L.

DEPTH	DESCRIPTION	SAMPLE No.	FROM	TO	WIDTH of SAMPLE
	fracture. green talc at 158.8m (521')	17070	156.7m	159.7m	3m
	contact with Endako phase obscure		(514')	(524')	(10')
	due to alteration				
		17071	159.7m	162.8m	3m
			(524')	(534')	(10')
	at 164.6m (540') MoS ₂ and pyrite on	17072	162.8m	165.8m	3m
	fracture 10° to C/A		(534')	(544')	(10')
	at 165.2m (542') MoS ₂ and pyrite on				
	fracture 10° to C/A 1-2mm thick	17073	165.8m	168.9m	3m
	occasional fractures coated with		(544')	(554')	(10')
	soft dull black material (some	17074	168.9m	171.9m	3m
	iron manganese mineral?)		(554')	(564')	(10')
		17075	171.9m	174.9m	3m
			(564')	(574')	(10')
		17076	174.9m	178.0m	3m
			(574')	(584')	(10')

PROPERTY..... AX GROUP.....

Diamond Drill Record



Cochrane Consultants Limited

DIP TEST		
Footage	Angle	
	Reading	Corrected

HOLE No. 80-6 Sheet No. 1 of 7 Lat. 140m N. of 80-5 Total Depth. 146.9m (482').
 Section..... Dep..... Logged By..... R. W.
 Date Begun..... April 5/80 Bearing..... Claim Ax No. 1
 Date Finished..... April 7/80 Elev. Collar. 832m approx. Core Size N.O.W.L.

DEPTH	DESCRIPTION	SAMPLE No.	FROM	TO	WIDTH of SAMPLE
0-12.5m (0-41')	Overburden				
12.5-54.6m (41-179')	Endako Q. M. MoS ₂ on fracture blocky area 15.4m (50.5'). Alteration - chlorite- (serite ?)-calcite in fractures (up to 2mm). Magnetite diss. kaolinite.	17082	12.5m (41')	15.5m (51')	3m (10')
		17083	15.5m (51')	18.6m (61')	3m (10')
	MoS ₂ 17.1m (56') pyrite rare	17084	18.6m (61')	21.6m (71')	3m (10')
		17085	21.6m (71')	24.7m (81')	3m (10')
		17086	24.7m (81')	27.7m (91')	3m (10')
		17087	27.7m (91')	30.8m (101')	3m (10')

PROPERTY AX GROUP

Diamond Drill Record



Cochrane Consultants Limited

DIP TEST		
	Angle	
Footage	Reading	Corrected
casing		

HOLE No. 80-6 Sheet No. 2 of 7 Lat. 140m N. of 80-5 Total Depth 146.9m (482')
 Section..... Dep..... Logged By..... R. W.
 Date Begun..... April 5/80 Bearing..... Claim AX No. 1
 Date Finished..... April 7/80 Elev. Collar..... 832m approx. Core Size..... N.Q.W.L.

DEPTH	DESCRIPTION	SAMPLE No.	FROM	TO	WIDTH of SAMPLE
	28.0m-28.3m (92-93')	17088	30.8m	33.8m	3m
	Aplite dyke 45° to C/A		(101')	(111')	(10')
	sharp contact				
		17089	33.8m	36.9m	3m
			(111')	(121')	(10')
		17090	36.9m	39.9m	3m
			(121')	(131')	(10')
		17091	39.9m	43.0m	3m
			(131')	(141')	(10')
	MoS ₂ and pyrite at 43m (141') and	17092	43.0	46.0m	3m
	43.3m (142') - small fracture		(141')	(151')	(10')
		17093	46.0m	49.1m	3m
			(151')	(161')	(10')
	fault gouge 50.3-50.6m (165-166')	17094	49.1m	52.1m	3m
	51.6-53.3m (169-175') core recovery		(161')	(171')	(10')

PROPERTY AX GROUP

Diamond Drill Record



Cochrane Consultants Limited

DIP TEST		
Footage	Angle	
	Reading	Corrected
casing	vertical	

HOLE No. 80-6 Sheet No. 3 of 7 Lat. 140m N. of 80-5 Total Depth 146.9m (482')

Section..... Dep..... Logged By R. W.

Date Begun April 5/80 Bearing..... Claim AX No. 1

Date Finished April 7/80 Elev. Collar 832m approx. Core Size N.Q.W.L.

DEPTH	DESCRIPTION	SAMPLE No.	FROM	TO	WIDTH of SAMPLE
	50% Minor MoS ₂ at 51.1m (169')	17095	52.1m	55.2m	3m
	blocky section		(171')	(181')	(10')
54.6-70.1m	Endako Quartz Monzonite	17096	55.2m	58.2m	3m
	Alteration intense-rock soft		(181')	(191')	(10')
	chlorite slickensides				
		17097	58.2m	61.3m	3m
			(191')	(201')	(10')
		17098	61.3m	64.3m	3m
	at 62.2m (204') MoS ₂ fracture		(201')	(211')	(10')
	30° to C/A also graphite (?)	17099	64.3m	67.3m	3m
	in several fractures		(211')	(221')	(10')
70.1-93.6m	Endako Quartz Monzonite Alteration	17100	67.3m	70.4m	3m
(230-307;)	less intense-rock more competent		(221')	(231')	(10')
	at 69.8m (229')	17101	70.4m	73.4m	3m
	MoS ₂ and graphite in fracture 5° to C/A		(231')	(241')	(10')



PROPERTY..... AX GROUP.....

Diamond Drill Record

Cochrane Consultants Limited

DIP TEST		
Footage	Angle	
	Reading	Corrected
casing	vertical	

HOLE No. 80-6 Sheet No. 4 of 7 Lat. 140m N. of 80-5 Total Depth 146.9m (482')

Section..... Dep..... Logged By..... R. W.....

Date Begun..... April 5/80 Bearing..... Claim AX No. 1

Date Finished..... April 7/80 Elev. Collar 832m approx. Core Size N.Q.W.L.

DEPTH	DESCRIPTION	SAMPLE No.	FROM	TO	WIDTH of SAMPLE
	76.2-76.5m (250-251') soft pale green	17102	73.4m	76.5m	3m
	gouge material 10° to C/A in highly altered crumbly section		(241')	(251')	(10')
		17103	76.5m	79.5m	3m
			(251')	(261')	(10')
	at 80.2 (263') soft red brown slickensides (hematite?)	17104	79.5m	82.6m	3m
			(261')	(271')	(10')
	at 83.8m (275') black slickensides 20° to C/A	17105	82.6m	85.6m	3m
			(271')	(281')	(10')
		17106	85.6m	88.7m	3m
			(281')	(291')	(10')
	at 89.9m (295') brown slickensides 20° to C/A	17107	88.7m	91.7m	3m
			(291')	(301')	(10')
	at 90.2m (296') green slickensides 30° to C/A				

PROPERTY..... AX GROUP.....

DIP TEST		
Angle		
Footage	Reading	Corrected
casing	vertical	

Diamond Drill Record



Cochrane Consultants Limited

HOLE No. 80-6 Sheet No. 5 of 7 Lat. 140m N. of 80-5 Total Depth 146.9m (482')

Section..... Dep..... Logged By..... R. W.

Date Begun..... April 5/80..... Bearing..... Claim AX No. 1

Date Finished..... April 7/80..... Elev. Collar. 832m approx. Core Size N.Q.W.L.

DEPTH	DESCRIPTION	SAMPLE No.	FROM	TO	WIDTH of SAMPLE
	92.3-92.7m (303-304') Aplite dyke	17108	91.7m	94.8m	3m
	-some diss. magnetite		(301')	(302')	(10')
93.6-99.0m (307-325')	Endako Quartz Monzonite Alteration intense	17109	94.8m	97.8m	3m
	93.9-96m (308-315') extremely crumbly. 99.7m (327') MoS ₂ fracture	17110	97.8m	100.8m	3m
	50° to C/A		(321')	(331')	(10')
99.0-110.3m	Endako Quartz Monzonite Alteration less intense	17111	100.8m	103.9m	3m
	103.3-103.6m (339-340') sheared area		(331')	(341')	(10')
	pale green slickensides at 104.5m	17112	103.9m	106.9m	3m
	(343') calcite vein ½cm 30 to C/A		(341')	(351')	(10')
110.3-111.9m (362'-367')	Endako Quartz Monzonite intensely altered	17113	106.9m	110.0m	3m
			(351')	(361')	(10')
		17114	110.0m	113.1m	3m
			(361')	(371')	(10')

PROPERTY..... AX GROUP

DIP TEST		
Footage	Angle	
	Reading	Corrected

Diamond Drill Record



Cochrane Consultants Limited

HOLE No. 80-6 Sheet No. 6 of 7 Lat. 140m N. of 80-5 Total Depth 146.9m (482')

Section..... Dep..... Logged By R. W.

Date Begun April 5/80 Bearing..... Claim AX No. 1

Date Finished April 7/80 Elev. Collar. 832m approx. Core Size N.Q.W.L.

DEPTH	DESCRIPTION	SAMPLE No.	FROM	TO	WIDTH of SAMPLE
111.9-117.3m (367-385')	Endako Quartz Monzonite less intensely altered	17115	113.1m (371')	116.1m (281')	3m (10')
117.3-138.1m ((385-453')	Endako Quartz Monzonite intensely altered	17116	116.1m (381')	119.2m (391')	3m (10')
		17117	119.2m (391')	122.2m (401')	3m (10')
	at 125m (410') small fine grained dyke approx. 5cm wide 10' to C/A	17118	122.2m (401')	125.3m (411')	3m (10')
		17119	125.3m (411')	128.3m (421')	3m (10')
		17120	128.3m (421')	131.4m (431')	3m (10')
	132.3m (434') pale green talc slickensides	17121	131.4m (431')	134.4m (441')	3m (10')
	133.5m (438') red brown soft gouge				

PROPERTY AX GROUP

Diamond Drill Record



Cochrane Consultants Limited

DIP TEST		
		Angle
Footage	Reading	Corrected

HOLE No. 80-6 Sheet No. 7 of 7 Lat. 140m N. of 80-5 Total Depth 146.9m (482')

Section..... Dep..... Logged By..... R. W.

Date Begun April 5/80 Bearing..... Claim AX No. 1

Date Finished April 7/80 Elev. Collar 832m approx. Core Size N.Q.W.L.

DEPTH	DESCRIPTION	SAMPLE No.	FROM	TO	WIDTH of SAMPLE
	material 4mm thick 15° to C/A	17122	134.4m	137.5m	3m
	(Hematite?) slickensides		(441')	(451')	(10')
138.1-146.9m	Casey QM intensely altered	17123	137.5m	140.5m	3m
	abundant pale green talc-chlorite.		(451')	(461')	(10')
	Slickensides, no magnetite				
	some red brown slicksides 139.6m	17124	140.5m	143.5m	3m
	(458'), 139.9m (459'), 140.2m (460'),		(461')	(471')	(10')
	142.0m (466')				
	142.8m (466.5')-142.6m (468') rock	17125	143.5m	146.9m	3.4m
	almost completely altered to pale		(471')	(482')	(11')
	green talc				
	142.8m-146.9m (466.5-482') no				
	calcite				
	END HOLE				

PROPERTY..... AX GROUP

DIP TEST		
Footage	Angle	
	Reading	Corrected
casing	vertical	

Diamond Drill Record



Cochrane Consultants Limited

HOLE No. 80-7 Sheet No. 1 of 6 Lot. 100m N. of 79-4 Total Depth 141m (462')
 Section..... Dep..... Logged By..... R. W.
 Date Begun April 8, 1980 Bearing..... Claim AX No. 1
 Date Finished April 10, 1980 Elev. Collar 828m approx. Core Size N.Q.W.L.

DEPTH	DESCRIPTION	SAMPLE No.	FROM	TO	WIDTH of SAMPLE
0-18.6m (0-61')	OVERBURDEN				
18.6-36.9m	Altered Endako QM - chloritic slickensides - magnetite - calcite at 18.6m (61'), 20.4m (67') pyrite in fracture 0° to C/A. gouge at 18.9m (62'). core recovery 50% 18.6-20.4m (61-67')	17126	18.6m (61')	21.6m (71')	3m (10')
	caving at 20.7m (68') - core blocky- fractured all dir.	17128	24.7m (81')	27.7m (91')	3m (10')
	21.3m (71') minor MoS ₂ and pyrite sheared on fracture 0 to C/A	17129	27.7m (91')	30.8m (101')	3m (10')
	22.9m (75') - calcite and pyrite on fracture 0° to C/A				
	25-27.1m (82-89') core recovery 80% - very shattered in small angular pieces	17130	30.8m (10')	33.8m (111')	3m (10')
	32.3m (106') Xtalline calcite 3mm thick 55° to C/A	17131	33.8m (111')	36.9m (121')	3m (10')

PROPERTY..... AX GROUP

Diamond Drill Record



Cochrane Consultants Limited

DIP TEST		
		Angle
Footage	Reading	Corrected
casing	vertical	

HOLE No. 80-7..... Sheet No. 2 of 6 Lat. 100 m N. of 79-4 Total Depth..... 14.1m (462').
 Section..... Dep..... Logged By..... R. W.
 Date Begun..... April 8, 1980 Bearing..... Claim..... AX No. 1
 Date Finished..... April 10, 1980 Elev. Collar..... 828m approx. Core Size..... N.Q.W.L.

DEPTH	DESCRIPTION	SAMPLE No.	FROM	TO	WIDTH of SAMPLE
36.9-47.9m (121-157')	Endako QM - Intensely Altered frequent areas of slickensided pale green soft gouge material- probably - chlorite and talc- kaolinite- occasional reddish brown hematitic material 36.9-46.3m (121-152') core recovery 75%	17132	36.9m (121')	39.9m (131')	3m (10')
		17133	39.9m (131')	43.0m (141')	3m (10')
		17134	43.0m (141')	46.0m (151')	3m (10')
47.9-56.7m	Endako QM Alteration less intense core blocky at 49.4m (162') MoS ₂ and pyrite in small fracture 45° to C/A	17135	46.0m (151')	49.0m (161')	3m (10')
		17136	49.1m (161')	52.1m (171')	3m (10')
	52.4-53.9m (172-177') core recovery 50%	17137	52.1m (171')	55.2m (181')	3m (10')



PROPERTY..... AX GROUP

Diamond Drill Record

Cochrane Consultants Limited

DIP TEST		
Footage	Angle	
	Reading	Corrected
casing	vertical	

HOLE No. 80-7 Sheet No. 3 of 6 Lat. 100m N. of 79-4 Total Depth 141m (462')

Section..... Dep..... Logged By... R. W.

Date Begun... April 8, 1980 Bearing..... Claim AX No. 1

Date Finished... April 10, 1980 Elev. Collar... 828m approx. Core Size... N.O.W.L.

DEPTH	DESCRIPTION	SAMPLE No.	FROM	TO	WIDTH of SAMPLE
56.7-58.8m (186-193')	Endako QM intensely altered	17138	55.2m	58.2m	3m
	55.2-57m (181-187') core		(181')	(191')	(10')
	recovery 40%				
	at 58m (190') 10cm of pale green	17139	58.2m	61.3m	3m
	slickensided gouge material talcy		(191')	(201')	(10')
	also at 58.8m (193')				
		17140	61.3m	64.3m	3m
			(201')	(211')	(10')
58.8-73.1m (193-240')	Endako QM Alteration less				
	intense - core more competent	17141	64.3m	67.3m	3m
	occasional pyrite in microfractures		(211')	(221')	(10')
	64.9-65.2m (213-214') sheared area				
		17142	67.3m	70.4m	3m
	at 70.4m (231') green talc 2mm		(221')	(231')	(10')
	10° to C/A/				
		17143	70.4m	73.4m	3m
			(231')	(241')	(10')

PROPERTY AX GROUP

Diamond Drill Record



Cochrane Consultants Limited

DIP TEST		
Footage	Angle	
	Reading	Corrected
casing	vertical	

HOLE No. 80-7 Sheet No. 4 of 6 Lat. 100m N. of 79-4 Total Depth 141m (462')

Section Dep. Logged By R. W.

Date Begun April 8, 1980 Bearing Claim Ax No. 1

Date Finished April 10, 1980 Elev. Collar 828m approx Core Size N.O.W.L.

DEPTH	DESCRIPTION	SAMPLE No.	FROM	TO	WIDTH of SAMPLE
73.1-75.3m (240-247')	Aplite Dyke highly fractured - filled with calcite upper contact at 45° to C/A	17144	73.4m (241')	76.5m (251')	3m (10')
	lower contact at 45° to C/A (less distinct) Both contacts highly sheared and altered. Abundant pale green talcy slickensided fractures	17145	76.5m (251')	79.5m (261')	3m (10')
75.3-76.8m (247-252')	Endako QM Blocky 75.6m (248') pyrite in fracture 10° to C/A	17146	79.5m (261')	82.6m (271')	3m (10')
		17147	82.6m (271')	85.6m (281')	3m (10')
76.8-86.9m (252-285')	Endako QM intensely altered/ 83.5m (274') MoS ₂ and pyrite 45° to C/A. Abundant pale green and dark green talcy and chloritic soft material showing slickensides at various angles	17148	85.6m (281')	88.7m (291')	3m (10')

PROPERTY AX GROUP

Diamond Drill Record



Cochrane Consultants Limited

DIP TEST		
	Angle	
Footage	Reading	Corrected
casing	vertical	

HOLE No. 80-7 Sheet No. 5 of 6 Lat. 100m N. of 79-4 Total Depth 141m (462')
 Section..... Dep..... Logged By..... R. W.
 Date Begun..... April 8, 1980 Bearing..... Claim AX No. 1
 Date Finished..... April 10, 1980 Elev. Collar 828m approx. Core Size N.Q.W.L.

DEPTH	DESCRIPTION	SAMPLE No.	FROM	TO	WIDTH of SAMPLE
86.9-94.2m (285-309')	Endako OM alteration less intense - core blocky	17149	88.7m (291')	91.7m (301')	3m (10')
		17150	91.7m (301')	94.8m (311')	3m (10')
94.2-102.7m (309-337')	Endako OM Alteration intense- particularly chloritization	17151	94.8m (311')	97.8m (321')	3m (10')
		17152	97.8m (321')	100.8m (331')	3m (10')
		17153	100.8m (331')	103.9m (341')	3m (10')
102.7-140.8m	Casey OM contact at about 60° to C/A Contact zone shows evidence of brecciation at 103.3m (339') generally intense chloritization kaolinization-no magnetite (Endako section had magnetite throughout)	17154	103.9m (341')	106.9m (351')	3m (10')
		17155	106.9m (351')	110.0m (361')	3m (10')

PROPERTY..... AX GROUP.....

Diamond Drill Record



Cochrane Consultants Limited

DIP TEST		
Footage	Angle	
	Reading	Corrected
casing	vertical	

HOLE No. 80-7 Sheet No. 6 of 6 Lat. 100m N. of 79-4 Total Depth. 141m (462')

Section..... Dep..... Logged By..... R. W.....

Date Begun April 8, 1980 Bearing..... Claim AX No. 1

Date Finished April 10, 1980 Elev. Collar 828m approx. Core Size N.Q.W.L.

DEPTH	DESCRIPTION	SAMPLE No.	FROM	TO	WIDTH of SAMPLE
		17156	110.0m	113.1m	3m
			(361')	(371')	(10')
	at 113.4m (372') 4mm graphite seam	17157	113.1m	116.1m	3m
	30° to C/A		(371')	(381')	(10')
		17158	116.1m	119.2m	3m
			(381')	(391')	(10')
	117.7-121.6m (386-399') rock almost	17159	119.2m	122.2m	3m
	completely altered to pale green		(391')	(401')	(10')
	talc showing slickensides				
		17160	125.3m	128.3m	3m
			(411')	(421')	(10')
	at 129.8m (426') to end of hole				
	alteration gradually becoming less	17161	131.4m	134.4m	3m
	intense		(431')	(441')	(10')
	at 137.8m (452') intensely altered	17162	137.5m	140.8m	3.3m
	shear at 60° to C/A		(451')	(462')	(11')
	END HOLE				

PROPERTY..... AX GROUP

Diamond Drill Record



Cochrane Consultants Limited

DIP TEST		
Footage	Angle	
	Reading	Corrected
casing	vertical	

HOLE No. 80-8 Sheet No. 1 of 7
 Section.....
 Date Begun April 10, 1980
 Date Finished April 12, 1980

N18° W.-100m from
 Watkins Cr. and road
 crossing
 Bearing.....
 Elev. Collar 818m approx.

Total Depth 135m (443')
 Logged By R. W.
 Claim Ax No. 1
 Core Size N.Q.W.L.

DEPTH	DESCRIPTION	SAMPLE No.	FROM	TO	WIDTH of SAMPLE
0-7.0m (0-23')	Overburden				
7.0-11.3m (23-37')	Endako OM Alteration - kaolinization- chloritization, occasional pyrite in fractures	17163 17164	7.0m (23')	10.0m (33')	3m (10') 3m (10')
11.3-17.7m	Calcite throughout fractures- magnetite dissem. Fault zone Recovery 50% or less chloritic gouge - highly fractured fragments kaolinite	17165	13.1m (43')	16.2m (53')	3m (10')
17.7-44.5m (58-146')	Endako OM as above Predominant fractures vertical at 18.6-18.9m (61-62') MoS ₂ and pyrite in fracture near 0° to C/A. at 18.9-19.2m (62-63') fractures 0° to C/A only pyrite	17166 17167	16.2m (53')	19.2m (63')	3m (10') 3m (10')



PROPERTY.....

Diamond Drill Record

Cochrane Consultants Limited

DIP TEST		
Footage	Angle	
	Reading	Corrected
casing	vertical	

N18°W-100m from
 HOLE No. 80-8 Sheet No. 3 of 7 Lat. Watkins Cr. and road Total Depth 135m (443')
 Section Dep. crossing Logged By R. W.
 Date Begun April 10, 1980 Bearing Claim AX No. 1
 Date Finished April 12, 1980 Elev. Collar 818m approx. Core Size N.Q.W.L.

DEPTH	DESCRIPTION	SAMPLE No.	FROM	TO	WIDTH of SAMPLE
	fracture MoS ₂ and pyrite	17175	43.6m	46.6m	3m
	43.6m (143') chloritic gouge 1cm at 45° to C/A		(143')	(153')	(10')
44.5-45.7m (146-150')	Aplite Dyke 45° to C/A chloritized fractures				
45.7-54.9m (150-180')	Endako QM Intensely altered No magnetite - Minor pyrite 53.3m MoS ₂ micro fractures	3151	46.6m	49.7m	3m
			(153')	(163')	(10')
		3152	49.7m	52.7m	3m
			(163')	(173')	(10')
		3153	52.7m	55.8m	3m
			(173')	(183')	(10')
54.9-63.7m	Endako QM Alteration less intense chlorite - kaolinite - Magnetite dissem.	3154	55.8m	58.8m	3m
			(183')	(193')	(10')
	58.8m (193') MoS ₂ fr. 50° to C/A 1-2mm	3155	58.8m	61.9m	3m
	61m (200') MoS ₂ fr. 60° to C/A 1mm		(193')	(203')	(10')

PROPERTY..... AX GROUP

DIP TEST		
	Angle	
Footage	Reading	Corrected
casing	vertical	

Diamond Drill Record



Cochrane Consultants Limited

N18°W-100m from Watkins

HOLE No. 80-8 Sheet No. 4 of 7 Lat. Cr. and road crossing Total Depth..... 135m (443').
 Section..... Dep..... Logged By..... R. W.
 Date Begun..... April 10, 1980 Bearing..... Claim AX No. 1
 Date Finished..... April 12, 1980 Elev. Collar. 818m approx. Core Size N.Q.W.L.

DEPTH	DESCRIPTION	SAMPLE No.	FROM	TO	WIDTH of SAMPLE
63.7-67.7m (209-222')	Endako QM Alteration intense chloritization and kaolinization	3157	64.9m (213')	67.9m (223')	3m (10')
67.7-90.2m	Endako QM Alteration less intense at 68.1m (223.5') MoS ₂ some pyrite fracture 10° to C/A.	3158	67.9m (223')	71.0m (233')	3m (10')
62.0-70.6m (230.5-231.5')	gouge calcite throughout	3159	71.0m (233')	74.1m (243')	3m (10')
72.5-72.8m (238-239')	gouge				
75m (246')	gouge	3160	74.1m (243')	77.1m (253')	3m (10')
75.3m (247')	MoS ₂ - 10° to C/A 1mm				
		3161	77.1m (253')	80.2m (263')	3m (10')
81.7m (268')	MoS ₂ fracture 30° to C/A	3162	80.2m (263')	83.2m (273')	3m (10')
	at 84.9m (278.5') MoS ₂ several fractures 30° to C/A plus pyrite	3163	83.2m (273')	86.3m (283')	3m (10')

PROPERTY..... AX GROUP.....

Diamond Drill Record



Cochrane Consultants Limited

DIP TEST		
Footage	Angle	
	Reading	Corrected
casing	vertical	

N18°W- 100m from Watkins Cr.
 HOLE No. 80-8 Sheet No. 5 of 7 Lat. and road crossing Total Depth... 135m (443')
 Section..... Dep..... Logged By..... R. W.
 Date Begun..... April 10, 1980 Bearing..... Claim AX No. 1
 Date Finished..... April 12, 1980 Elev. Collar... 818m approx. Core Size N.O.W.L.

DEPTH	DESCRIPTION	SAMPLE No.	FROM	TO	WIDTH of SAMPLE
	86m (282') MoS ₂ in sheared and altered area 70° to C/A.	3164	86.3m (283')	89.3m (293')	3m (10')
	30° to C/A.				
	87.1m (286') MoS ₂ 45° to C/A				
	1mm (sheared and altered)				
90.2-93.9m (296-308')	Casey OM contact zone intensely sheared and altered. Contact appears at 45° to C/A.	3165	89.3m (293')	92.3m (303')	3m (10')
	Intense chloritization and kaolinization - calcite	3166	92.3m (303')	95.4m (313')	3m (10')
	92.7m (304') MoS ₂ trace and pyrite				
93.9-135.0m (308-443')	Casey OM Pervasive kaolinization - chloritization calcite throughout fractures. Pyrite occasionally	3167	95.4m (313')	98.4m (323')	3m (10')
	at 97.5m (320') MoS ₂ and pyrite fracture 20° to C/A	3168	98.4m (323')	101.5m (333')	3m (10')
	at 97.8m (321') MoS ₂ and pyrite fracture 20° to C/A.				

PROPERTY AX GROUP

Diamond Drill Record



Cochrane Consultants Limited

DIP TEST		
		Angle
Footage	Reading	Corrected
casing	vertical	

HOLE No. 80-8 Sheet No. 6 of 7

N18°W-100m from Watkins Cr.

Lat and road crossing

Total Depth 135m (443')

Section.....

Dep.....

Logged By.....R. W.Date Begun April 10, 1980

Bearing.....

Claim AX No. 1Date Finished April 12, 1980Elev. Collar 818m approx. Core Size N.O.W.L.

DEPTH	DESCRIPTION	SAMPLE No.	FROM	TO	WIDTH of SAMPLE
	102.1m (335') pyrite and quartz	3169	101.5m	104.5m	3m
	xtals in vug		(333')	(343')	(10')
	104.9m (344') small shear intense	3170	104.5m	107.6m	3m
	alteration, chloritic		(343')	(353')	(10')
	slickensides				
	108.8m (357') MoS ₂ and pyrite	3171	107.6m	110.6m	3m
	20° to C/A.		(353')	(363')	(10')
		3172	110.6m	113.7m	3m
			(363')	(373')	(10')
		3173	113.7m	116.7m	3m
			(373')	(383')	(10')
		3174	116.7m	119.8m	3m
			(383')	(393')	(10')
	Hematitic alteration?	3175	119.8m	122.8m	3m
			(393')	(403')	(10')

PROPERTY..... AX GROUP

DIP TEST		
	Angle	
Footage	Reading	Corrected
casing	vertical	

Diamond Drill Record



Cochrane Consultants Limited

HOLE No. 80-9... Sheet No. 1 of 6 Lat. 1+00N..... Total Depth 146.9m (482')

Section..... Dep. 13+50 W..... Logged By R. W.....

Date Begun April 15, 1980 Bearing --..... Claim AX No. 1

Date Finished April 17, 1980 Elev. Collar 820m approx. Core Size N.Q.W.L.

DEPTH	DESCRIPTION	SAMPLE No.	FROM	TO	WIDTH of SAMPLE
0-11.3m (0-37')	Overburden				
11.3-29.3m	Altered Endako OM	3201	11.3m	14.3m	3m
	Aplite dyke 1cm wide 50° to C/A		(37')	(47')	(10')
	Chloritization-kaolinization-				
	calcite magnetite - specularite	3202	14.3m	17.4m	3m
	17.7-18.3m (58-60') intensely		(47')	(57')	(10')
	sheared and altered				
	20.4m (67') Aplite dyke	3203	17.4m	20.4m	3m
	15cm wide 30° to C/A		(57')	(67')	(10')
	23.5-24.4m (77-80') intensely				
	sheared and altered	3204	20.4m	23.5m	3m
			(67')	(77')	(10')
		3205	23.5m	26.5m	3m
			(77')	(87')	(10')
	26.5m (87') Calcite 1cm 40° to C/A				
	chlorite 3mm	3206	26.5m	29.6m	3m
	27.4-27.4m (89-90') chloritized		(87')	(97')	(10')
	vertical fracture				

PROPERTY AX GROUP

DIP TEST		
	Angle	
Footage	Reading	Corrected
casing	vertical	

Diamond Drill Record



Cochrane Consultants Limited

HOLE No. 80-9 Sheet No. 2 of 6 Lat. 1+00N. Total Depth 146.9m (482')
 Section 13+50 W. Logged By R. W.
 Date Begun April 15, 1980 Bearing -- Claim AX No. 1
 Date Finished April 17, 1980 Elev. Collar 820m approx. Core Size N.O.W.L.

DEPTH	DESCRIPTION	SAMPLE No.	FROM	TO	WIDTH of SAMPLE
29.3-39.3m (96-129')	Endako QM Intensely altered chloritic-hematitic slickensides	3207	29.6m (97')	32.6m (107')	3m (10')
		3208	32.6m (107')	35.7m (117')	3m
		3209	35.7m (117')	38.7m (127')	3m (10')
39.3-41.1m	Lamprophyre Dyke, pevasively chloritized	3210	38.7m (127')	41.8m (137')	3m (10')
41.1-56.7m (135-186')	Endako QM as before dyke	3211	41.8m (137')	44.8m (147')	3m (10')
		3212	44.8m (147')	47.9m (157')	3m (10')
		3213	47.9m (157')	51m (167')	3m (10')

PROPERTY.....AX GROUP.....

Diamond Drill Record



Cochrane Consultants Limited

DIP TEST		
Footage	Angle	
	Reading	Corrected
casing	vertical	

HOLE No. 80-9 Sheet No. 3 of 6 Lat. 1+00N
 Section..... Dep. 13+50 W.
 Date Begun..... April 15, 1980 Bearing --
 Date Finished..... April 17, 1980 Elev. Collar. 820m approx.

Total Depth..... 146m (482')
 Logged By..... R. W.
 Claim AX No. 1
 Core Size..... N.Q.W.L.

DEPTH	DESCRIPTION	SAMPLE No.	FROM	TO	WIDTH of SAMPLE
		3214	51m (167')	53.9m (177')	3m (10')
		3215	53.9m (177')	57m (187')	3m (10')
56.7-57.9m (186-190')	Aplite Dyke contact near vertical porphyritic	3216	57m (187')	60m (197')	3m (10')
57.9-75m (190-246')	Endako OM As before dyke	3217	60m (197')	63.1m (207')	3m (10')
	63.1m (207') MoS ₂ with chloritic gouge 30° to C/A	3218	63.1m (207')	66.1m (217')	3m (10')
	65.2m (214') MoS ₂ with chloritic gouge 15° to C/A	3219	66.1m (217')	69.2m (227')	3m (10')
	70.4-70.7m (231-232') Aplite Dyke	3220	69.2m (227')	72.2m (237')	3m (10')

PROPERTY..... AX GROUP

Diamond Drill Record



Cochrane Consultants Limited

DIP TEST		
Footage	Angle	
	Reading	Corrected
casing	vertical	

HOLE No. 80-9 Sheet No. 4 of 6 Lat. 1+00N. Total Depth 146m (482')

Section..... Dep. 13+50 W. Logged By R. W.

Date Begun..... April 15, 1980 Bearing -- Claim AX No. 1

Date Finished..... April 17, 1980 Elev. Collar 820m approx. Core Size N. Q. W. L.

DEPTH	DESCRIPTION	SAMPLE No.	FROM	TO	WIDTH of SAMPLE
	74.4m (244') pyrite in fracture	3221	72.2m	75.3m	3m
	75m (246') MoS ₂ and graphite		(237')	(247')	(10')
	20° to C/A				
75-78.3m (246-257')	Shear zone - intensely altered gouge material - fine diss. pyrite	3222	75.3m (247')	78.3m (257')	3m (10')
	75.6-77.7 (248-255') MoS ₂ and graphite				
		3223	78.3m (257')	81.4m (267')	3m (10')
78.3-114.6m (257-376')	Endako QM intensely altered more pyrite	3224	81.4m (267')	84.4m (277')	3m (10')
	80.7 (265') Galena, chalco pyrite in vug	3225	87.5m (287')	90.5m (297')	3m (10')
	81.7m (268') MoS ₂ fracture 5° to C/A				
	84.1m (276') MoS ₂ and pyrite on fracture	3226	93.8m	96.6m	3m
	90.2m (296') gouge		(307')	(317')	(10')

PROPERTY..... AX GROUP.....

DIP TEST		
	Angle	
Footage	Reading	Corrected
casing	vertical	

Diamond Drill Record



Cochrane Consultants Limited

HOLE No. ..80-9 Sheet No. 5 of 6 Lat. 1+00N Total Depth..... 146m (482')

Section..... Dep. 13+50 W. Logged By..... R. W.

Date Begun..... April 15, 1980 Bearing -- Claim AX No. 1

Date Finished..... April 17, 1980 Elev. Collar. 820m approx. Core Size N.Q.W.L.

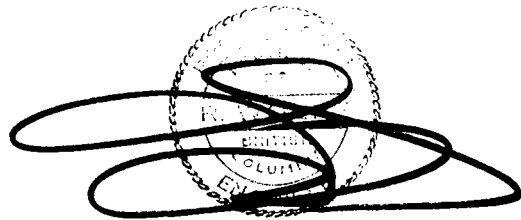
DEPTH	DESCRIPTION	SAMPLE No.	FROM	TO	WIDTH of SAMPLE
		3227	99.7m (327')	102.7m (337')	3m (10')
		3228	105.8m (347')	108.8m (357')	3m (10')
	112.5m (369') MoS ₂ sheared on fracture and chlorite	3229	111.9m (367')	114.6m (377')	3m (10')
114.6-132.0m (376-433')	Casey QM Contact 40° to C/A minor pyrite alteration intense-pervasive kaolinization	3230	114.6m (376')	117.7m (386')	3m (10')
	115.2m (378') 5mm graphite 50° to C/A	3231	120.7m (396')	123.7m (406')	3m (10')
	115.8m (380') MoS ₂ on fracture slickensided	3232	126.8m	129.8m	3m
	120.1m (394') trace MoS ₂ on fracture 40° to C/A		(416')	(426')	(10')
	121m (397') MoS ₂ trace rosettes - also on fracture 10° to C/A	3233	132.9m (436')	135.9m (446')	3m (10')
	128.6m (422') MoS ₂ trace specks				

APPENDIX II

CERTIFICATE

I, Robert Wolfe, of the Municipality of Maple Ridge, British Columbia, do hereby certify that:

1. I am a consulting geological engineer with an office at 4882 Delta Street, Delta, B. C. V4K 2T8.
2. I am a graduate of the University of Alberta, (1963) with a degree in Geology and Physics (B.Sc.). I also took an extra year of Geology at the University of British Columbia, in 1963-64.
3. I have practiced my profession since 1964 while being employed by such companies as KennCo (Western) Exploration, Meridian Exploration Syndicate, (Canex Aerial Exploration Ltd., Noranda Mines Ltd., Home Oil Co.) Orequest Syndicate (Granby Mining Co., Home Oil Co. Homestake Silver Mines.) I have been in private independent practice since 1968.
4. I have no interest, either direct or indirect in the properties or securities of Rio Plata Silver Mines Ltd., nor do I expect to receive or acquire any such interest.
5. I have been a member in good standing of the Association of Professional Engineers of the Province of British Columbia since 1967.



Robert Wolfe, P. Eng.,
Delta, B. C.,
June 10, 1980.



APPENDIX III

BIBLIOGRAPHY

- Holland, Stuart Annual Report of the Minister
1963: of Mines.
- Carr, J. M.: 1964 and 1965 Annual Reports of
 the Minister of Mines.
- Hemsworth, F. S. Assessment Report No. 0555 on the
1964: Geochemical Soil Sampling Survey
 Ax and Bx Mineral Claims
- Armstrong, J. E. G. S. C. Memoir 252
1965:
- Cochrane, D. R. Diamond Drilling Assessment Report
January, 1980: on the Ax Property



APPENDIX IV

SPECIFICATIONS OF FLUXGATE MAGNETOMETER MODEL MF-2

	<u>RANGES</u>	<u>SENSITIVITY</u>
Standard:	Plus or minus	
Standard:	1,000 gammas f.sc.	20 gamas/div.
	3,000 gammas f.sc.	50 gamas/div.
	10,000 gammas f.sc.	200 gammas/div.
	30,000 gammas f.sc.	500 gammas/div.
	100,000 gammas f.sc.	2000 gammas/div.
Meter:	Taut-band suspension	
	100 gama scale 2.1" long - 50 div.	
	300 gamma scale 1.9" long 60 div.	
Accuracy:	1000 to 10,000 gama ranges	0.5% of full scale
Operating Temperature:	-40 ^o C to +40 ^o C	
	-40 ^o F to +100 ^o F	
Temperature Coefficient:	Less than 1 gamma per ^o C	(1/2 gama/ ^o F)
Noise Level:	Less than 1 gamma P-1	
Bucking Adjustments:	-20,000 to 80,000 gammas	
	9 steps of 10,000 gammas plus fine control	
	of 0-10,000 gammas by ten turn potent-	
	imeter. Reversible for southern hemisphere	
Recording Output:	Optional	
Electrical Response:	D.C. to 0.3 cps (3db down) on 100 gamma	
	range with meter in circuit. D.C. to 20	
	cps with meter network shorted for	
	recording purposes.	
Batteries:	Internal 3 x 6V-1 amp/h . Sealed Lead	
	Acid rechargeable Centralab GC 6101;	
	recharge time 8 hrs.	
Consumption:	60 milliampere - GC6101 Batteries are	
	rated for 16 hours continuous use.	
Dimensions:	6 1/2 x 2 3/4 x 10" Instrument.	
	161mm x 71mm x 254mm	
Weights:	5 lb. 8oz. - 2.5 kg.	

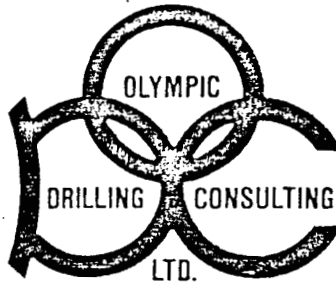


APPENDIX V

OLYMPIC DRILLING LTD.

INVOICES





10140 RAILWAY AVE., RICHMOND, B.C. V7E 2B8
271-5898

March 31st, 1980

Cochrane Consultants Limited,
4882 Delta St.
Delta, B.C.
V4K 2T8

Attn: D. R. Cochrane, P. Eng.

PROGRESS BILLING # 1

Job: RIO PLATO SILVER MINES LTD.
ENDAKO, B.C.

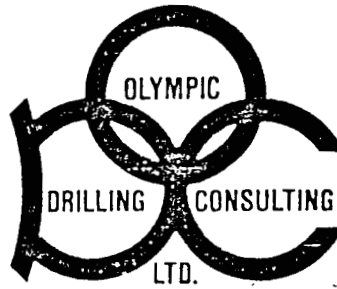
Drilling	\$39,608.25
Mobilization	3,654.00
Water Supply	814.00
Machine Hours	120.00
Truck	40.00
Supply Pump	92.00
Mixing Mud	129.50
Traule	203.50
Mud	<u>416.88</u>

\$45,078.13 # 103 25000

Breakdown and copies of time sheets are attached.

c.c.: Mr. Bill Battrum
Rio Plato Silver Mines Ltd.

E. Thickett
Secretary.



10140 RAILWAY AVE., RICHMOND, B.C. V7E 2B8
271-5898

March 31, 1980

Rio Plato Silver Mines Ltd.

Drilling Detail

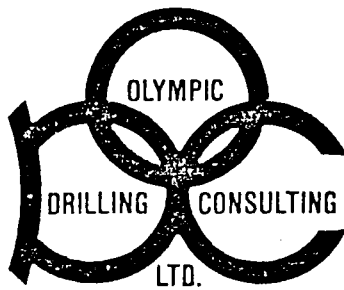
<u>Hole #</u>	<u>From</u>	<u>To</u>	<u>Footage</u>	<u>Rate</u>	<u>Amount</u>
80-1	0	500	500	\$ 18.25	\$ 9,125.00
80-1	500	537	37	20.00	740.00
80-2	0	500	500	18.25	9,125.00
80-2	500	648	148	20.00	2,960.00
80-3	0	500	500	18.25	9,125.00
80-3	500	506	6	20.00	120.00
80-4	0	461	<u>461</u>	18.25	<u>8,413.25</u>
			<u>2,152</u>		<u>\$39,608.25</u>

Mobilization

(a) Base to truck unloading point	<u>2,100.00</u>
(b) Mobilization from truck unloading point to first hole.	
March 18, 1989 - 40 man hours @ 18.50/hr.	740.00
March 19, 1980 - 44 man hours @ 18.50/hr.	<u>814.00</u>
	<u>1,554.00</u>

Water Supply

March 17, 1980 - 40 hours @ 18.50/hr.	740.00
March 20, 1980 - 4 hours @ 18.50/hr.	<u>74.00</u>
	<u>814.00</u>



10140 RAILWAY AVE., RICHMOND, B.C. V7E 2B8
271-5898

March 31, 1980

Rio Plato Silver Mines Ltd.

Machine Hours

March 20, 1980 - 4 hours @ 20.00/hr.	80.00
March 23, 1980 - 2 hours @ 20.00/hr.	<u>40.00</u>
	<u>120.00</u>

Truck 4 X 4

March 17, 1980 - 3 hours @ 5.00/hr.	15.00
March 18, 1980 - 2 hours @ 5.00/hr.	10.00
March 19, 1980 - 2 hours @ 5.00/hr.	10.00
March 23, 1980 - 1 hour @ 5.00/hr.	<u>5.00</u>
	<u>40.00</u>

Supply Pump

11½ days @ 8.00/day	<u>92.00</u>
---------------------	--------------

Mixing Mud

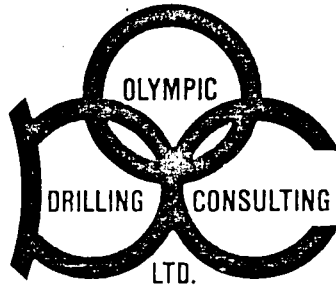
March 20, 1980 - 2 hours @ 18.50/hr.	37.00
March 23, 1980 - 2 hours @ 18.50/hr.	37.00
March 26, 1980 - 2 hours @ 18.50/hr.	37.00
March 29, 1980 - 1 hour @ 18.50/hr.	<u>18.50</u>
	<u>129.50</u>

Traule

March 20, 1980 - March 30, 1980 11 hours @ 18.50/hr.	<u>203.50</u>
---	---------------

Mud

March 20, 23, 26, 29, 1980 x 50 Bags @ 7.25/bag plus 15%	362.50
	<u>54.38</u>
	<u>416.88</u>



10140 RAILWAY AVE., RICHMOND, B.C. V7E 2B8
271-5898

April 24th, 1980

Cochrane Consultants Limited
4882 Delta St.
Delta, B.C.
V4K 2T8

Attn: D. R. Cochrane P.Eng.

Final Billing

Job: RIO PLATO SILVER MINES LTD.

Drilling	\$45,766.50
Mobilization	2,100.00
Supply Pump	28.00
Mud	792.06
Core Boxes	1,868.75
Bits	494.50
Fuel	45.00
Man Hours	2,183.00
Machine Hours	220.00
Standby R & B	132.00
Travel	333.00
	<u>\$53,962.81</u>

103 25 000
110 28 962.81

Breakdown and copies of time sheets are attached.

c.c. Mr. Bill Battrum
Rio Plato Silver Mines. Ltd.


E. Thickett
Secretary

April 24th, 1980

Rio Plato Silver Mines

Drilling Detail

<u>Hole #</u>	<u>From</u>	<u>To</u>	<u>Footage</u>	<u>Rate</u>	<u>Amt</u>
80-5	0	500	500	\$18.25	\$ 9,125.00
80-5	500	633	133	20.00	2,660.00
80-6	0	481	481	18.25	8,778.25
80-7	0	466	466	18.25	8,504.50
80-8	0	433	433	18.25	7,902.25
80- 9	0	482	482	18.25	<u>8,796.50</u>
					<u>\$45,766.50</u>

Mobilization

Move to base

\$ 2,100.00 *Disp.*

Supply Pump

April 1st - April 4th, 1980.
3½ days @ \$8.00 per day

\$ 28.00

Mud

95 bags @ \$7.25 per bag
Plus 15%

\$ 688.75

103.31

\$ 792.06

Core Boxes

250 NQ Boxes @ 6.50
Plus 15%

1,625.00

243.75

Bits

\$ 1,868.75

1 NQ Bit - April 6th, 1980 Serial #21586
Plus 15%

430.00

64.50

Lost 3 Bits drilling through cave in hole 80-6

\$ 494.50

Fuel

45 Gal. Fuel for Rio Plata Camp @ 1.00 per gal. \$ 45.00

April 24th, 1980

Rio Plato Silver Mines

Man Hours

April 1	- 6 man hours @ 18.50	\$ 111.00
April 13	- 20 man hours @ 18.50	370.00
April 14	- 32 man hours @ 18.50	592.00
April 15	- 28 man hours @ 18.50	518.00
April 18	- 32 man hours @ 18.50	<u>592.00</u>
		<u>\$2,183.00</u>

Machine Hours

April 1	- 3 hours @ 20.00	60.00
April 14	- 8 hours @ 20.00	<u>160.00</u>
		<u>\$ 220 .00</u>

Standby Room and Board

April 14	- 4 Men @ \$33.00 per man	\$ <u>132.00</u>
----------	---------------------------	------------------

Travel

April 1 - 12	- 18 hours @ 18.50 per hour	\$ <u>333.00</u>
--------------	-----------------------------	------------------

APPENDIX VI

PERSONNEL AND COST STATEMENT

FIELD WAGES

Instrument Operator, March 5-21, 14 days at \$120/day	\$ 1,680.00
Helper, March 5-21, 14 days at \$120/day.....	1,680.00
Slasher, April 15-23, 52 hrs at \$10/hr	520.00
Slasher, April 15-23, 48 hrs at \$10/hr	480.00
Linecutter, March 17-April 17, 28 days at \$100/day	2,800.00
B. A. Cochrane, March 15-30, 2 1/2 days at \$120/day	300.00
R. Wolfe, P. Eng. March 29-May 8, 27 days at \$250/day	6,750.00
D. R. Cochrane, P. Eng. March 29-May 8 7 days at \$250/day	1,750.00

FIELD EXPENSES

R. Orsetti (Cat man)	8,405.00
Olympic Drilling	98,962.81
Nor Mac (Generator Rental)	405.60
Gallant Truck (water truck)	10,908.00
Montgomery Consultants Ltd.	6,837.22
Air fare	482.06
Food and Accomodation	1,397.29
Shipping Charges	581.10
Camp Supplies	1,259.80
4 x 4 rental - 37 days at \$27.50/day	1,017.50
7633 km at \$0.18/km	1,373.94
Trailer Rental	1,787.55
Trailer Insurance	398.20
Trailer Haulage	674.44
Sub total	\$150,450.51



APPENDIX VI (cont'd)

Balance forward \$ 150,450.51

OFFICE EXPENSES

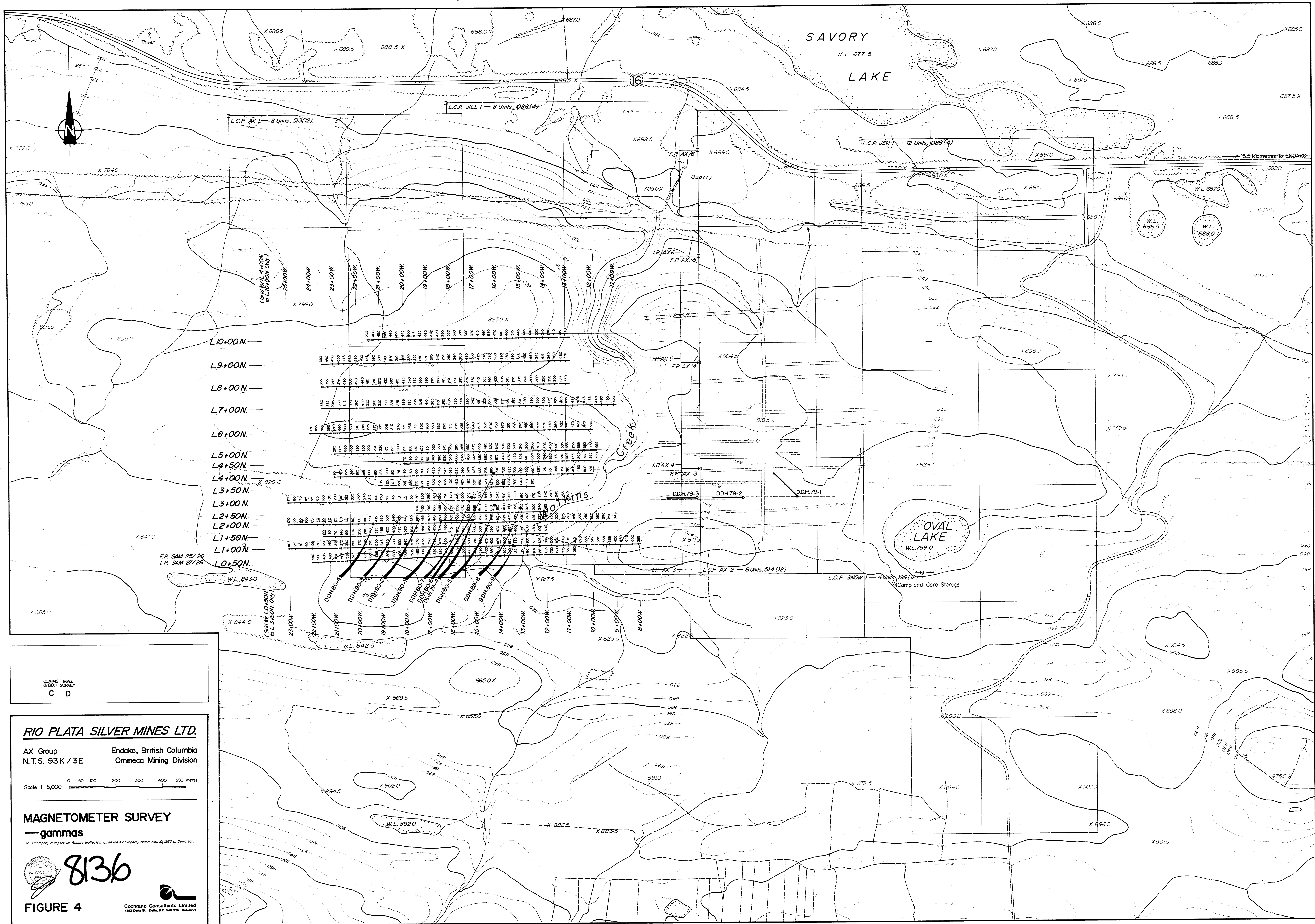
Drafting - 170 hrs at \$17.50	2,975.00
Office time (typing, etc.) - 92 hrs at \$12/hr	1,104.00
Reproduction	363.76
Report preparation	3,714.82
Misc. expenses	
Delivery \$121.45	
Supplies 350.83	
Phone 107.29	
Postage 5.00	
Bk charges <u>9.00</u>	593.57
Burnett Resources Surveys Ltd (topo mapping)	<u>5,900.63</u>
 Total	 \$ 165,102.29

NOTES ON ASSESSMENT WORK DISTRIBUTION

The diamond drill program and magnetometer survey was carried out on the Ax Group of claims.

Assessment work credits on the Jen Group were based on road rehabilitation, campsite preparation, camp facilities, water supply for drilling support based at Oval Lake, sludge and core storage construction, topographic mapping (see Figures 4 and 5), and the amount expended on this group exceeds the \$13,000.00 claimed on the Statement of Exploration and Development.





CLAIMS MAP
B.O.D.H. SURVEY
C D

RIO PLATA SILVER MINES LTD.

AX Group Endako, British Columbia
N.T.S. 93K/3E Omineca Mining Division

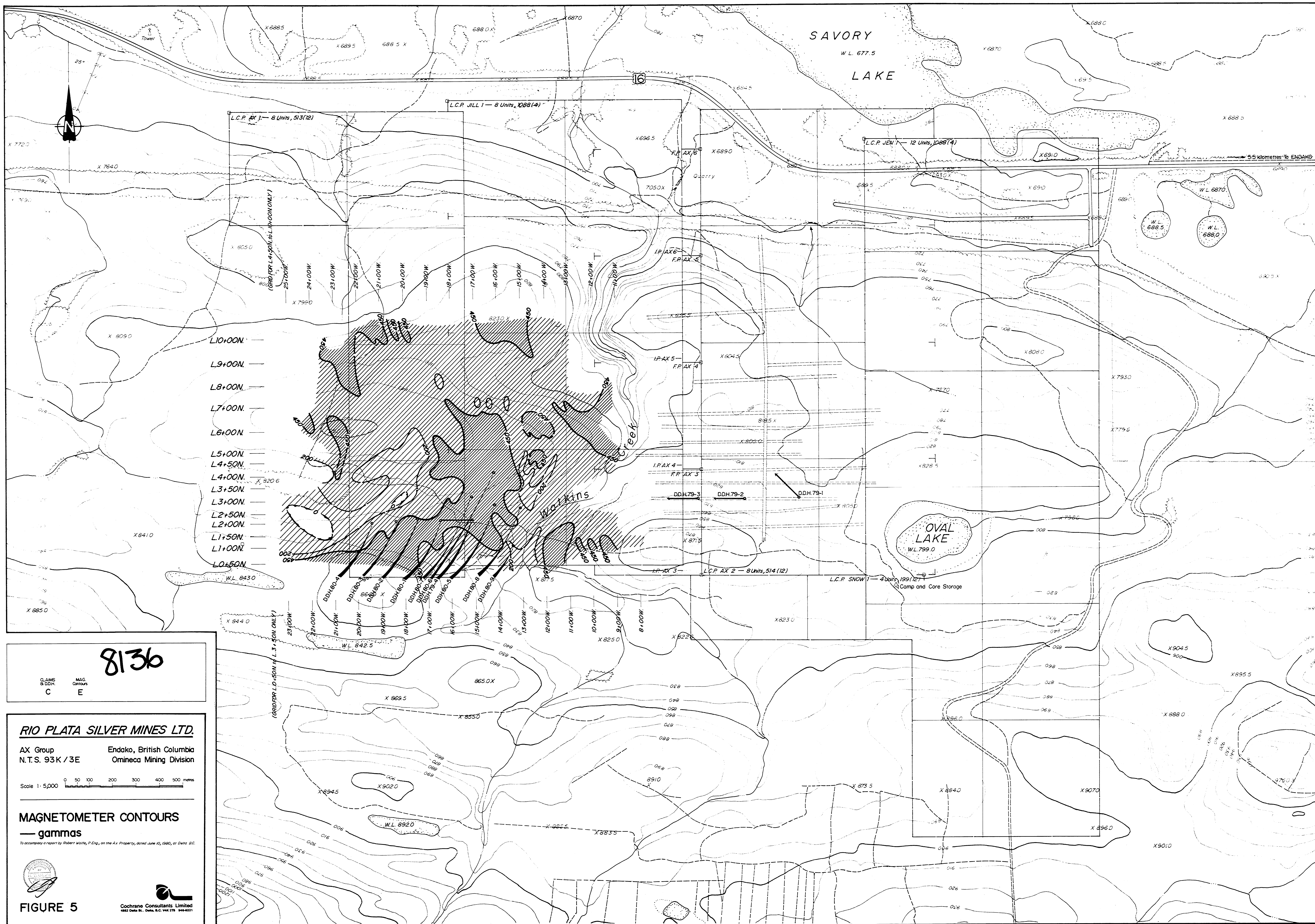
Scale 1:5,000
0 50 100 200 300 400 500 metres

MAGNETOMETER SURVEY

— gammas
To accompany a report by Robert Watts, P. Eng., on the AX Property, dated June 10, 1980 at Delta B.C.

8136

FIGURE 4
Cochrane Consultants Limited
482 Dale St., Delta, B.C. V4L 2T8 944-9231



8136

CLAIMS & DDH: C
MAG. Contours: E

RIO PLATA SILVER MINES LTD.
 AX Group Endako, British Columbia
 N.T.S. 93K/3E Omineca Mining Division

Scale 1:5,000

MAGNETOMETER CONTOURS
 — gammas

To accompany a report by Robert Wolfe, P.Eng., on the AX Property, dated June 10, 1980, at Delta, B.C.