

BC Geological Survey  
Assessment Report  
08182

ASSESSMENT REPORT

RYAN MINERAL CLAIM

Fort Steele M. D.

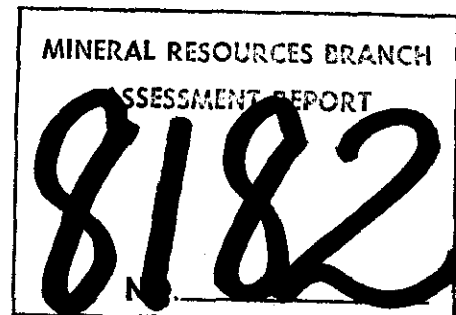
NTS: 82G/4W

Long.:  $116^{\circ}00'00''$  W.      Lat.:  $49^{\circ}07'30''$  N.

Owner & Operator: St. Eugene Mining Corporation Ltd.

Author: John R. Wilson

Date Submitted: July 25, 1980



## TABLE OF CONTENTS

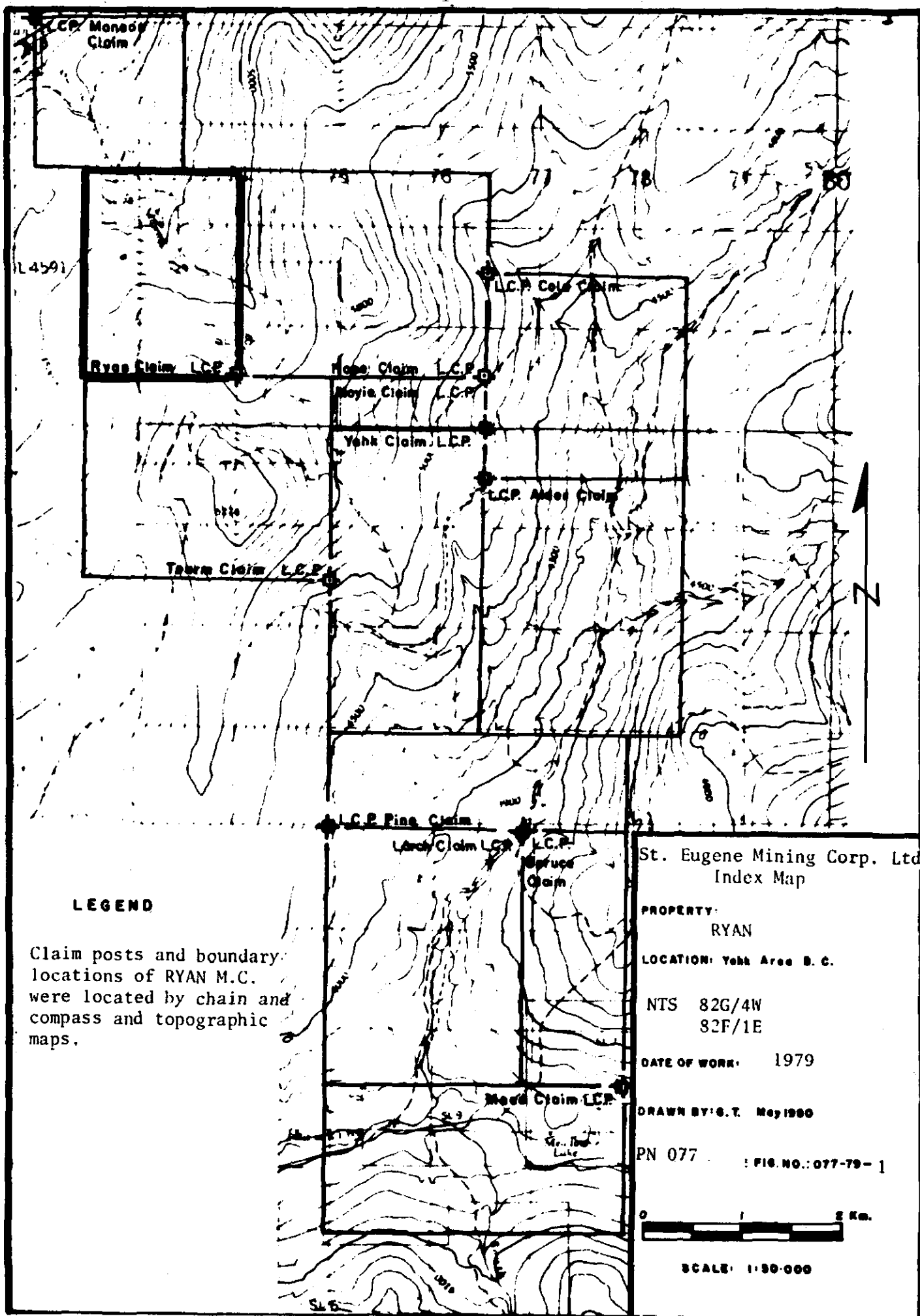
	<u>Page</u>
INTRODUCTION . . . . .	2
DETAILED DATA . . . . .	2
INTERPRETATION OF DATA . . . . .	3
STATEMENT OF COSTS . . . . .	4
AUTHOR'S QUALIFICATIONS . . . . .	5

## FIGURES

INDEX MAP (Fig. 077-79-1) . . . . .	1
-------------------------------------	---

## Geochem Maps

Figure 077-79-2	Sample Location . . . . .	6
Figure 077-79-3	Cu Soils (in ppm) . . . . .	7
Figure 077-79-4	Pb Soils (in ppm) . . . . .	8
Figure 077-79-5	Zn Soils (in ppm) . . . . .	9
Figure 077-79-6	Ag Soils (in ppm) . . . . .	10
Figure 077-79-7	Cd Soils (in ppm) . . . . .	11



## INTRODUCTION

The Ryan claim (12 units) is located approximately eight kilometres northeast from the town of Yahk, B. C. It covers most of the upper portion of Manson Creek. Elevations range from 1220 to 1708 metres.

Access is by an old logging road that leaves highway 3 about two kilometres southwest from Ryan station.

The claim was staked in the summer of 1979 and work consisted of:

- establishing a total of 3150 metres of grid by chain and compass
- collecting a total of 81 soil samples. Analyses were for Cu, Pb, Zn, Ag and Cd.

All work was done on the Ryan claim.

The current owner and operator is St. Eugene Mining Corporation Limited.

No geochemical anomalies were found that warranted follow up.

## DETAILED DATA

### Physical Work

A total of 3150 metres of grid was established by chain and compass and was marked by surveyor's ribbon.

### Geochemical Work

Soil sampling a grid at about 60 metre intervals produced a total of 55 samples. Soil sampling down the sides of Manson Creek at 60 metre intervals produced a total of 26 samples. Each sample came from the B-horizon at depths varying from 5 to 25 cm. but usually at about 15 cm. Mattocks were used to recover the soil which were placed in Kraft paper envelopes and sent to Bondar - Clegg and Co. Ltd. of North Vancouver, B. C. for sample preparation and analysis. The -80 mesh fraction was analyzed by normal geochemical techniques (Cu, Pb, Zn, Ag and Cd was extracted by hot Aqua Regia and then analysed by atomic absorption) 46 analyses were made for Cu, 81 for Pb, Zn, Ag and 15 for Cd.

### INTERPRETATION OF DATA

Too few metal concentration data are available for rigorous statistical treatment but for reference purposes the following table has been compiled.

<u>Element</u>	<u>Range ppm</u>	<u>Mode ppm</u>
Ag	0.2 - 0.4	0.2
Pb	6 - 40	6 - 10
Zn	16 - 100	50 - 60
Cd	0.2	0.2
Cu	7 - 41	10 - 15

No anomalous values were found for the elements Ag, Zn, Cd, Cu. A single lead value of 40 ppm is not regarded as significant enough to justify further work.

STATEMENT OF COSTS

A total of 2 man-days making grid (August 5, 8)	
@ \$40/day wages	\$80.00
A total of 3 man-days collecting soil samples	
(half of July 28 (2 men), $\frac{1}{2}$ of August 5	
(2 men), August 8) @ \$35/day wages	105.00
3 man/days (see above) food & accommodation	
@ \$15.00/day	45.00
3 days truck rental (see above) @ \$20.00/day	60.00
81 soil samples analyzed for Pb @ \$1.50/sample	121.50
81 soil samples analyzed for Zn @ \$0.65/sample	52.65
81 soil samples analyzed for Ag @ \$0.65/sample	52.65
46 soil samples analyzed for Cu @ \$0.65/sample	29.90
15 soil samples analyzed for Cd @ \$0.65/sample	9.75
Background correction @ 15¢/element	45.60
81 soil samples prepared for analysis @ \$0.45/sample	36.45
Preparation of assessment report	176.00
	<hr/>
Total	\$814.50

St. Eugene Mining Corporation Ltd. (N.P.L.)

ROOM 700

1112 WEST PENDER STREET

VANCOUVER 1, B. C., CANADA

TELEPHONE: 682-6242  
TELEX: 04-5938

July 22, 1980

The Chief Mining Recorder  
Fort Steele Mining Division  
Victoria, B. C.

Dear Sir:

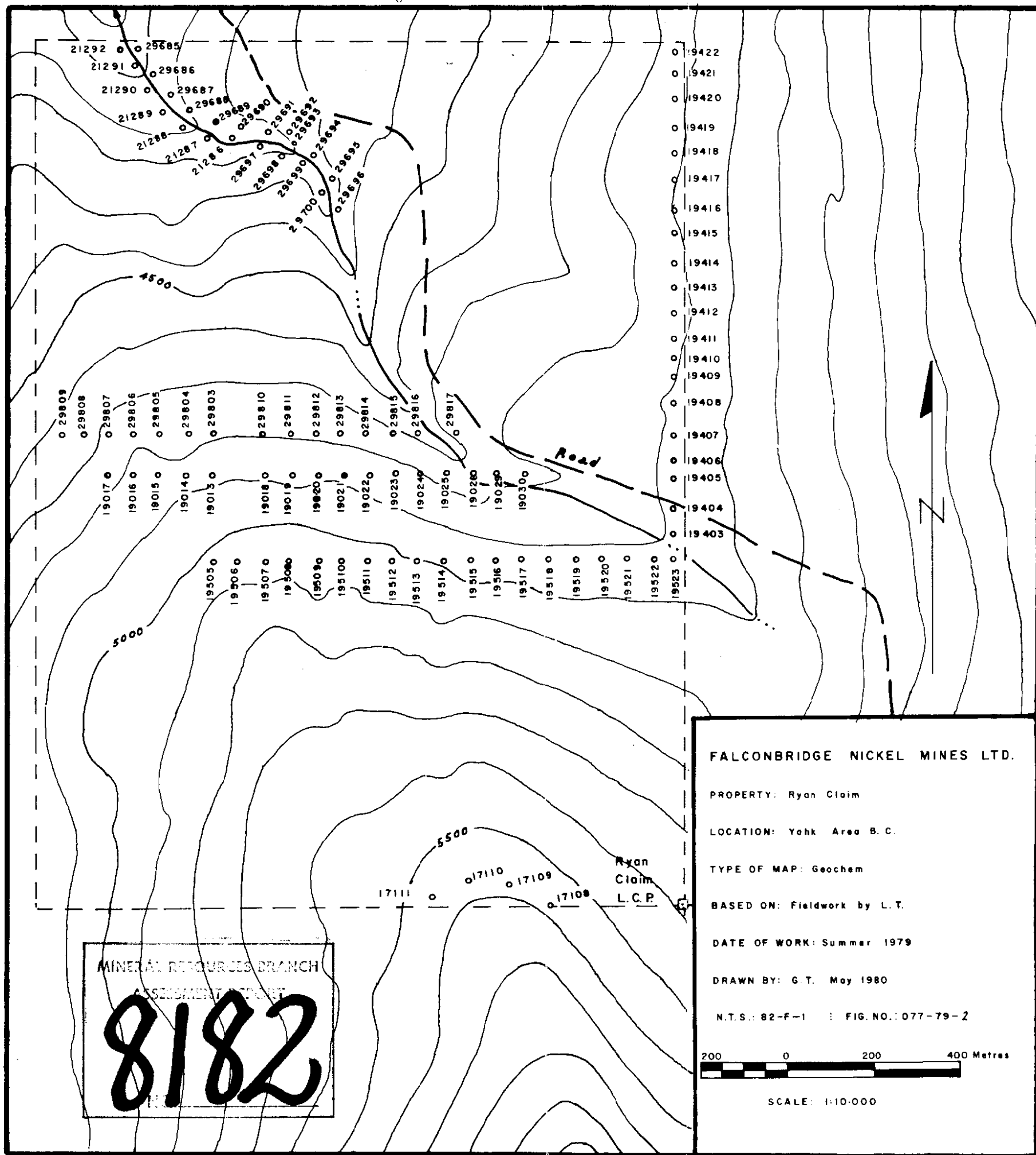
John R. Wilson graduated from the University of B. C. in 1972 with a BSc (honours geology) and has worked for the Falconbridge Nickel Mines group of companies since graduation as an exploration geologist.

The project was supervised by Leslie A. Tihor, project geologist, a PhD candidate at McMaster University (geology).

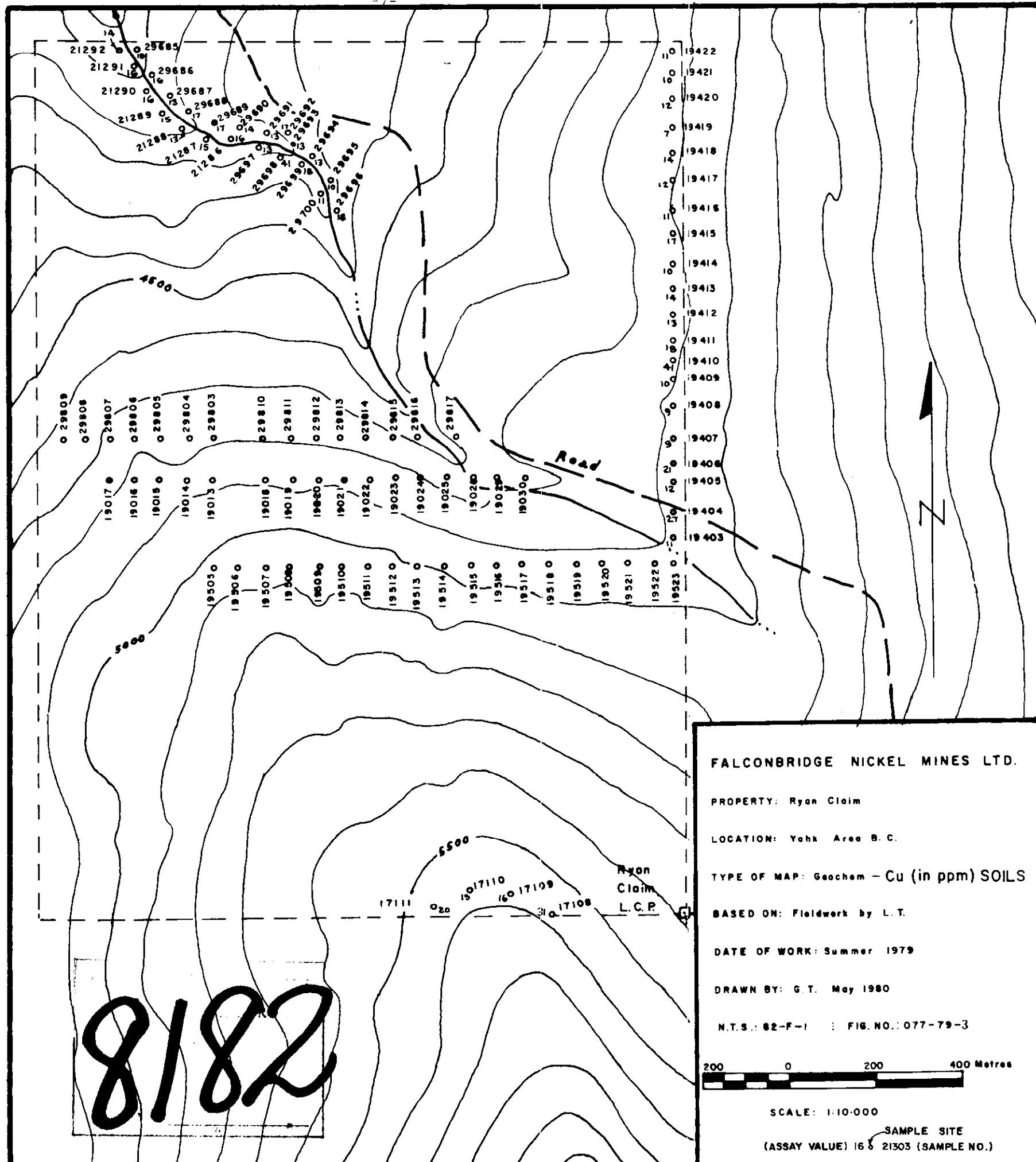
Yours sincerely,

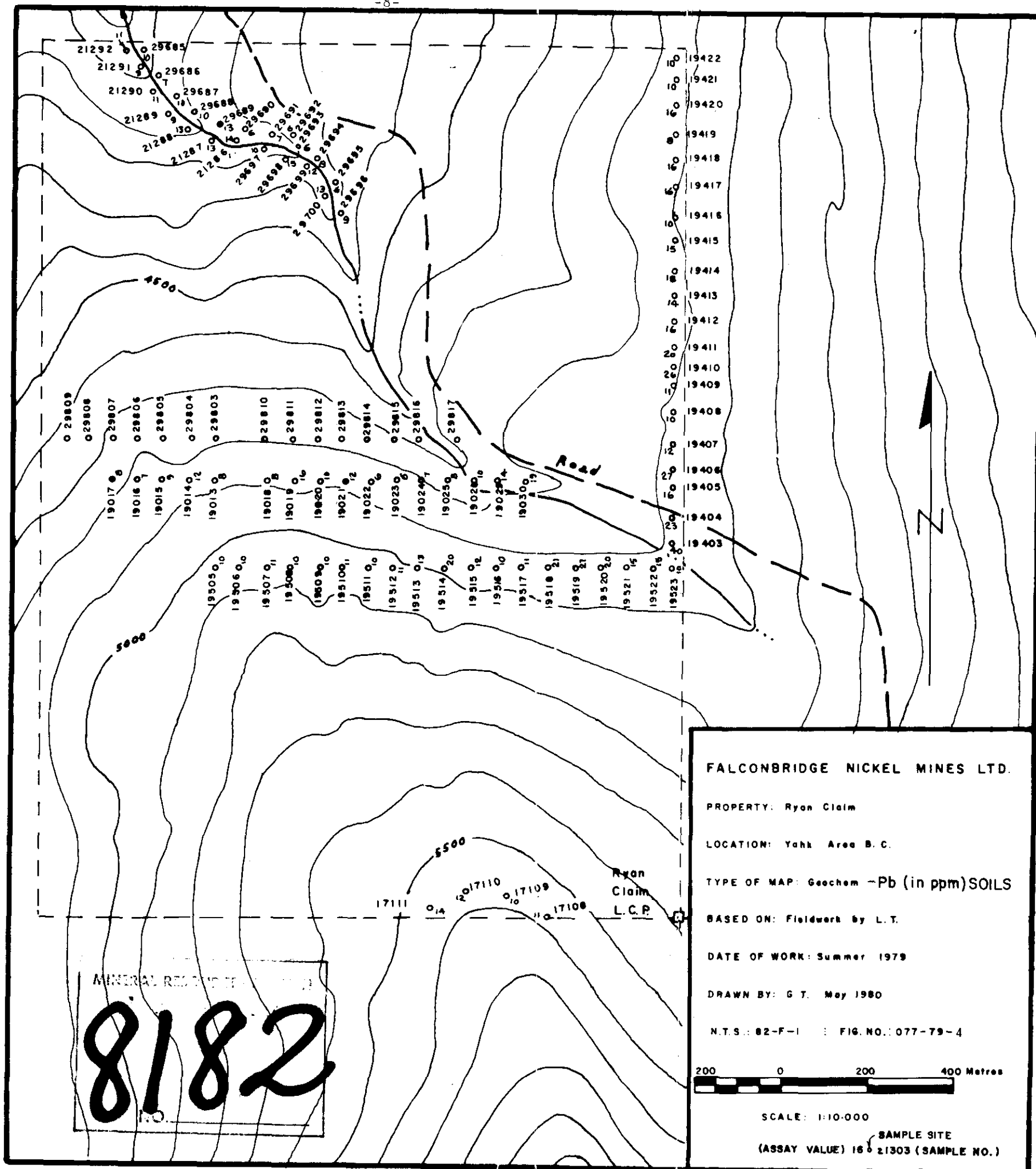
John R. Wilson

JRW:ik









FALCONBRIDGE NICKEL MINES LTD.

PROPERTY: Ryan Claim

LOCATION: Yahk Area B. C.

TYPE OF MAP: Geochem -Pb (in ppm) SOILS

BASED ON: Fieldwork by L. T.

DATE OF WORK: Summer 1979

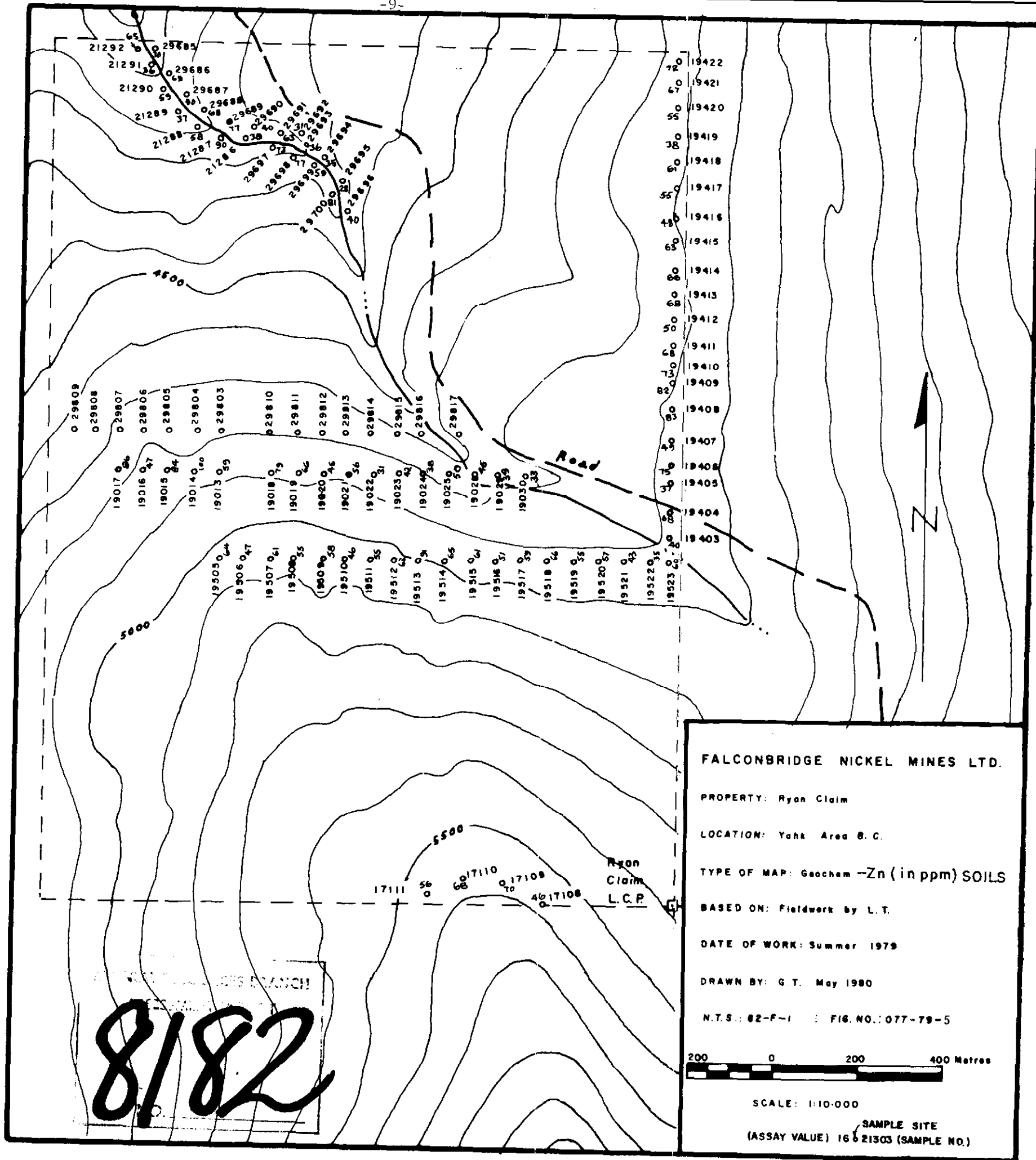
DRAWN BY: G T. May 1980

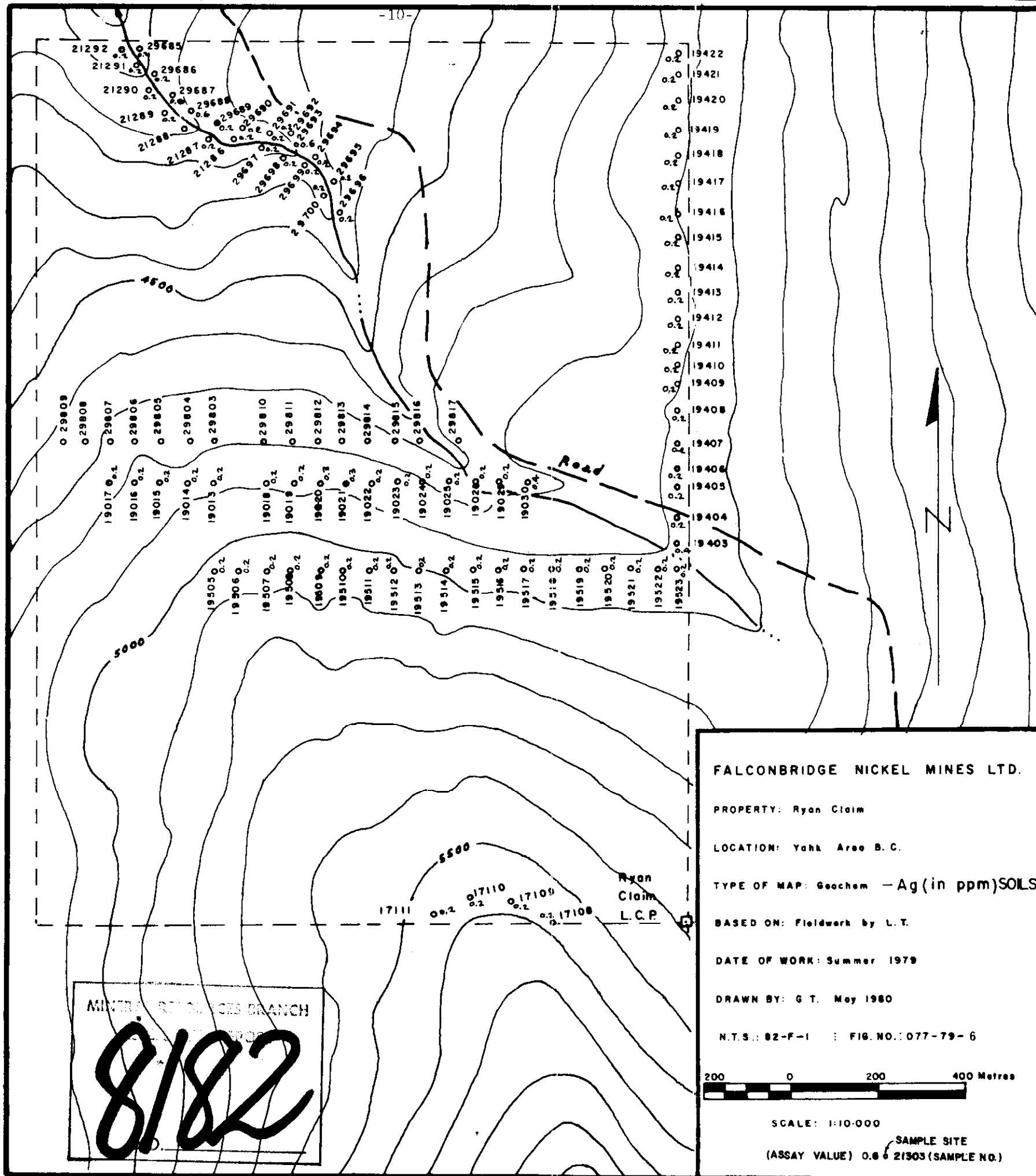
N.T.S.: 82-F-1 : FIG. NO.: 077-79-4

200 0 200 400 Metres

SCALE: 1:10-000

(ASSAY VALUE) 160 SAMPLE SITE  
21303 (SAMPLE NO.)





FALCONBRIDGE NICKEL MINES LTD.

PROPERTY: Ryan Claim

LOCATION: Yahk Area B. C.

TYPE OF MAP: Geochem - Ag (in ppm) SOILS

BASED ON: Fieldwork by L. T.

DATE OF WORK: Summer 1979

DRAWN BY: G T. May 1980

N.T.S. : 02-F-1 : FIG. NO. : 077-79-6

200 0 200 400 Metres

SCALE: 1:10,000

(ASSAY VALUE) 0.6 21303 (SAMPLE NO.)

(ASSAY VALUE) 16621303 (SAMPLE NO.)