

REPORT ON PROSPECTING

MISTY CLAIM

SKEENA MINING DIVISION

LAT 54° 50' LONG 128° 54'

NTS 103I/10, 15W

FOR
CCH RESOURCES LTD.
VANCOUVER, B. C.

BY
NORMA J. WILSON
NOVEMBER, 1979

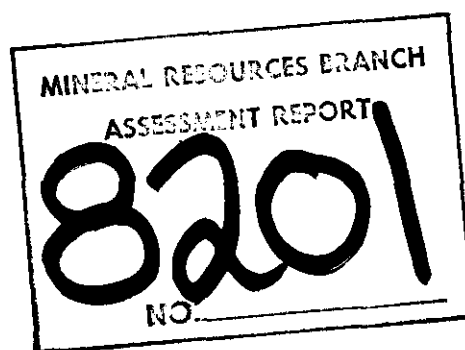


TABLE OF CONTENTS

TITLE PAGE.....	1
TABLE OF CONTENTS.....	2
LIST OF ILLUSTRATIONS.....	3
GEOGRAPHIC AND PHYSIOGRAPHIC LOCATION.....	4
ACCESS.....	4
HISTORY.....	4
SUMMARY OF WORK DONE.....	4
DISCUSSION.....	6
ITEMIZED COST STATEMENT.....	7
AUTHOR'S QUALIFICATIONS.....	8
APPENDICES	
I GEOCHEMICAL LAB REPORTS.....	9

LIST OF ILLUSTRATIONS

FIGURE 1.	INDEX MAP.....	5
FIGURE 2.	CLAIM MAP.....	IN POCKET
552-1	SAMPLE LOCATIONS AND GEOLOGICAL OBSERVATIONS...	IN POCKET
552-2	TUNGSTEN AND GOLD VALUES IN STREAM GRAVEL CONCENTRATES.....	IN POCKET
552-3	SILVER AND LEAD VALUES IN STREAM SILT SAMPLES..	IN POCKET
552-4	COPPER AND ZINC VALUES IN STREAM SILT SAMPLES..	IN POCKET
552-5	MOLYBDENUM AND ARSENIC VALUES IN STREAM SILT SAMPLES.....	IN POCKET

GEOGRAPHIC AND PHYSIOGRAPHIC LOCATION

The Misty claim is located on the north slope of the Nelson River valley, 30 km NNW of Terrace and 8 km west of the south end of Kitsumkalum Lake.

The hillside is steep, up to 35 degrees, and the tributaries have cut steep-sided valleys. The area is heavily timbered and the creek valleys are choked with underbrush.

The Misty claim lies close to the boundary between the Coast Crystalline Belt and the Intermontane Belt.

ACCESS

Access is by helicopter from Terrace. An old and very overgrown road exists near the river, but is no longer passable by vehicle.

HISTORY

No history of previous work is noted in the B.C. Department of Mines "Minfile", and no evidence of previous work was found on the property. CCH Resources Ltd. is the current owner and operator.

SUMMARY OF WORK DONE

The author and two assistants spent one day prospecting and stream sediment sampling on the property. Two creek drainages, comprising 3.2 line kilometers were prospected in conjunction with stream sediment sampling. Thirty five stream silt samples were collected, and five stream gravel pan concentrate samples were taken.

CCH RESOURCES LTD.

BRITISH COLUMBIA INDEX MAP

LOCATION of MISTY GROUP

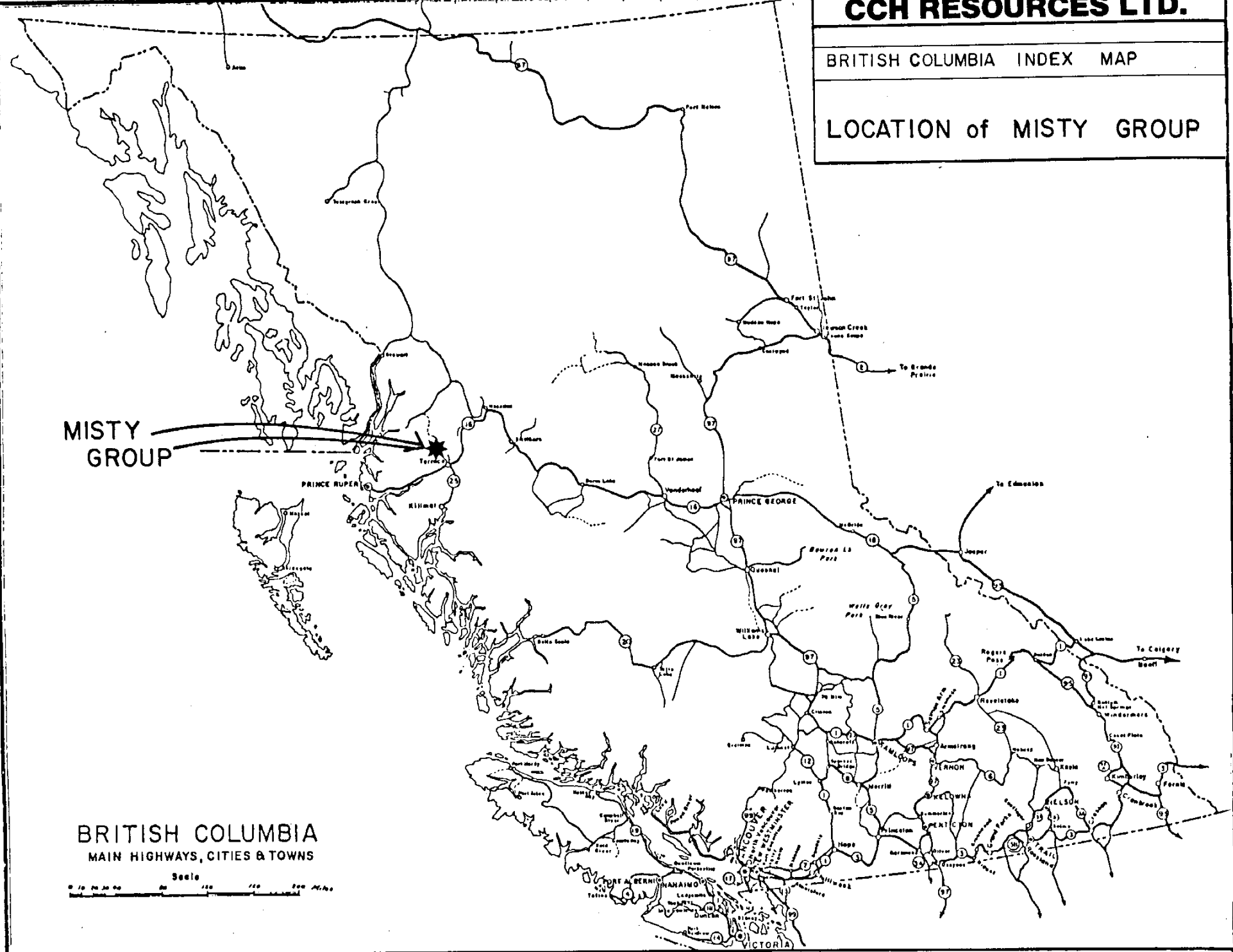


FIGURE 1. LOCATION OF MISTY CLAIM

DISCUSSION

The western creek which was examined is underlain mainly by rocks of the Coast Range Intrusions. The rocks are medium grained, light grey in over all color, with a composition varying between diorite and granodiorite. Below approximately 2000' elevation, the rocks are mainly tuffs, greywackes and siltstones of the Bowser Lake Group. The contact between these two groups was not seen in outcrop.

The eastern creek which was examined is underlain mainly by rocks of the Bowser Lake Group. At approximately 3100' an apparent fault contact was noted, placing rocks of the Coast Range Intrusives uphill, and rocks of the Bowser Lake Group downhill of this fault.

No mineralization was noted in the rocks examined.

The silt sample analyses are presented on maps 552- 3, 4 and 5 located in back pockets. The stream gravel concentrate results are shown on map 552-2, also located in a back pocket.

All samples were analyzed by Bondar-Clegg and Company Limited of North Vancouver. The silt samples were sieved to -80 mesh size, and a 0.5 g sample digested by the standard Hot Aqua Regia technique for copper, lead, zinc, molybdenum and silver. Determinations were made using Atomic Absorption. A second sample was digested by Perchloric to analyze for arsenic. Determinations were made by the Colorimetic technique. The stream gravel concentrates were crushed, and treated the same as the silt samples.

The two creeks which were sampled both showed anomalous values for silver, zinc and lead.

ITEMIZED COST STATEMENT

WAGES

1 Geologist @ 94.00/day Sept. 11, 1979	94.00
1 Assistant @ 175.00/day	175.00
1 Assistant @ 125.00/day	125.00

FOOD AND ACCOMMODATION

3 Persons 1 day @ 65.00/day Sept. 11, 1979	65.00
--	-------

TRANSPORTATION

Truck rental 1 day @ 30.00	30.00
Vancouver-Terrace-Vancouver	100.00
Helicopter Sept. 11, 1979	597.60

SAMPLE ANALYSIS

35 Silt samples Cu, Pb, Zn, Ag, Mo, As @ 7.60	266.00
5 Gravel concentrates Au, W @ 8.25	41.25

REPORT PREPARATION

700.00

TOTAL

2,193.85

AUTHOR'S QUALIFICATIONS

I, Norma Joan Wilson, graduated from the University of British Columbia, having completed a BSc. in Geology, in 1976. I have been working at my profession on a project basis since that time, and am currently employed by CCH Resources Ltd.

APPENDIX I



Geochemical Lab Report

As; Perchloric Nitric
Extraction Cu,Pb,Zn,Mo,Ag; Hot Aqua Regia Report No. 29 - 1982 PROJECT: 552
As; Colorimetric
Method Cu,Pb,Zn,Mo,Ag; Atomic Absorption From CCH Resources
Fraction Used Date September 26 19 79

Table with 8 columns: SAMPLE NO., Cu ppm, Pb ppm, Zn ppm, Mo ppm, Ag ppm, As ppm, REMARKS. Contains 28 rows of data.



Geochemical Lab Report

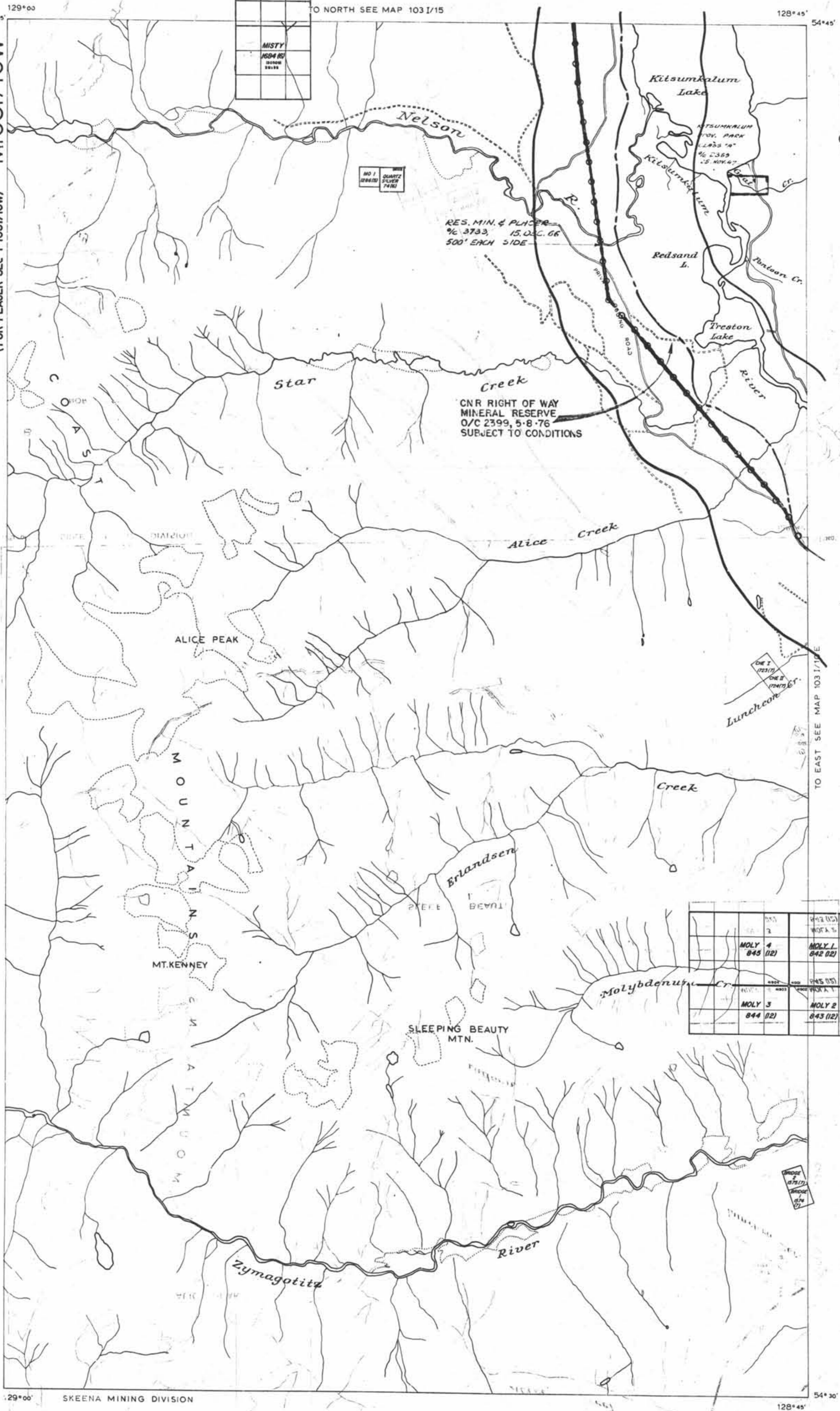
W; Basic Fusion
Extraction Au; Fire Assay & Hot Aqua Regia
Method Au; Atomic Absorption W; Colorimetric
Report No. 29 - 1982A PROJECT: 552
From CCH Resources
Date October 1 19 79

Table with columns for SAMPLE NO., W ppm, Au ppb, and additional empty columns for further data entry.

MINERAL RESOURCES
Assessment No.
8201
NO. 6

MIO31/10W

(FOR PLACER SEE P 1031/10W)



LEGEND

BOUNDARY OF MINERAL CLAIM

MINERAL RESERVE

VERIFIED MINERAL CLAIM

VERIFIED LEGAL CLAIM POST

LEGAL CLAIM POST & TAG NUMBERS

2 Miles

1000 Metres

2000 Metres

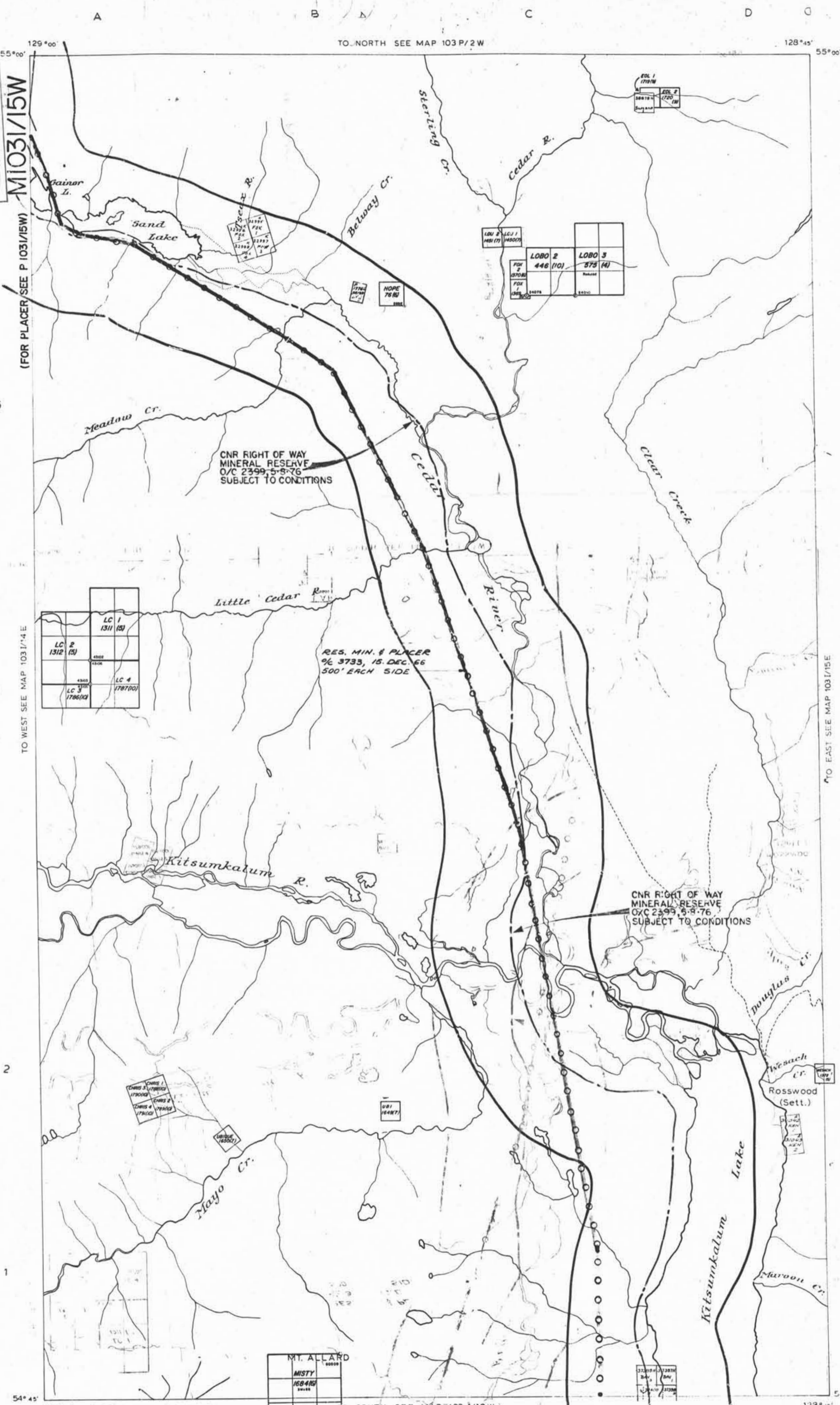
3000 Metres

3 Kilometres

DATE OF MICROFILM: 79-10-25

UNLESS VERIFIED OR SURVEYED, THE MAP POSITION OF A CLAIM IS NOT TO BE TAKEN AS A GUARANTEE OF THE CLAIMANT'S POSITION. ANY CLAIMANT CONCERNED SHOULD CONTACT THE SKENA MINING DIVISION.

MINERAL RESOURCES BRANCH
 ASSESSMENT DIVISION
8261
 1031/15W



TO WEST SEE MAP 1031/14 E

	LC 1 1311 (5)	
LC 2 1312 (5)		
	LC 4 1787 (10)	
LC 3 1786 (10)		

RES. MIN. & PLACER
 9/6 3733, 15 DEC 66
 500' EACH SIDE

CNR RIGHT OF WAY
 MINERAL RESERVE
 O/C 2399, 5-8-76
 SUBJECT TO CONDITIONS

MT. ALLARD
MISTY
1684 (5)
1685 (5)

TO EAST SEE MAP 1031/16 E

UNLESS VERIFIED OR SURVEYED, THE MAP POSITION OF A LEGAL CORNER POST IS BASED ON THE LOCATION OF THE NEAREST VERIFIED CORNER POST TO THE OFFICE OF THE MINING DIVISION. DATE OF MICROFILM: 79-11-01

2 Miles
 3 Kilometers

1000 Meters
 500 Meters
 0
 1000
 2000
 3 Kilometers

Mineral
 1000
 500
 0
 1000
 2000
 3 Kilometers

Mineral
 1000
 500
 0
 1000
 2000
 3 Kilometers

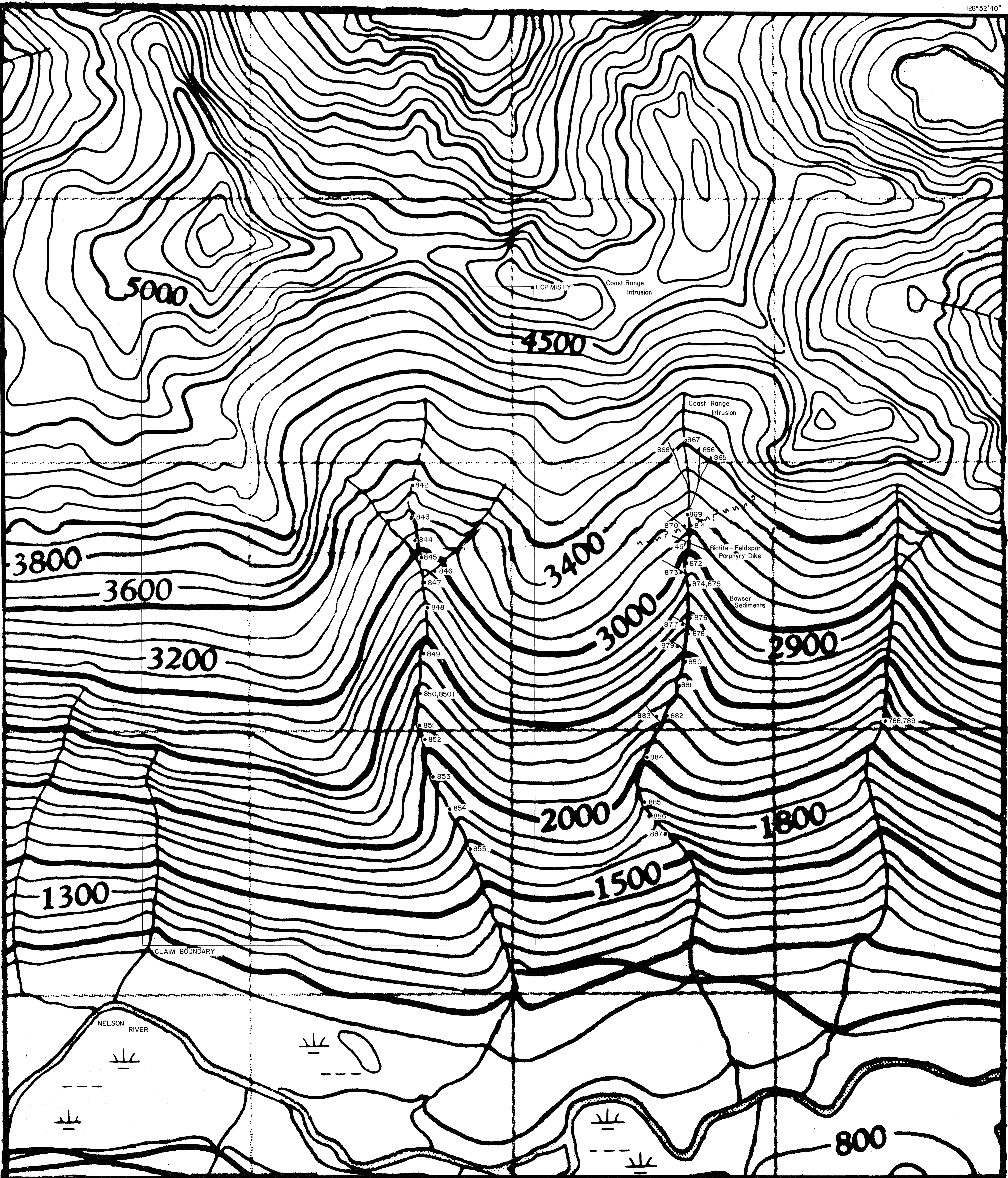
Mineral
 1000
 500
 0
 1000
 2000
 3 Kilometers

54°46'7"

128°56'13"

128°52'40"

54°46'

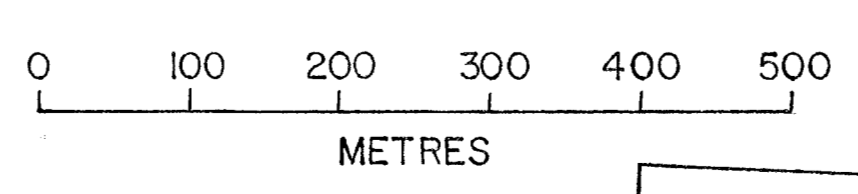


54°43'34"

128°56'13"

128°52'40"

54°43'



MINERAL RESOURCES BRANCH
ASSESSMENT REPORT
8201
NO.

- LEGEND
- 844 stream sediment sample location
 - LCP Legal Corner Post of Claim

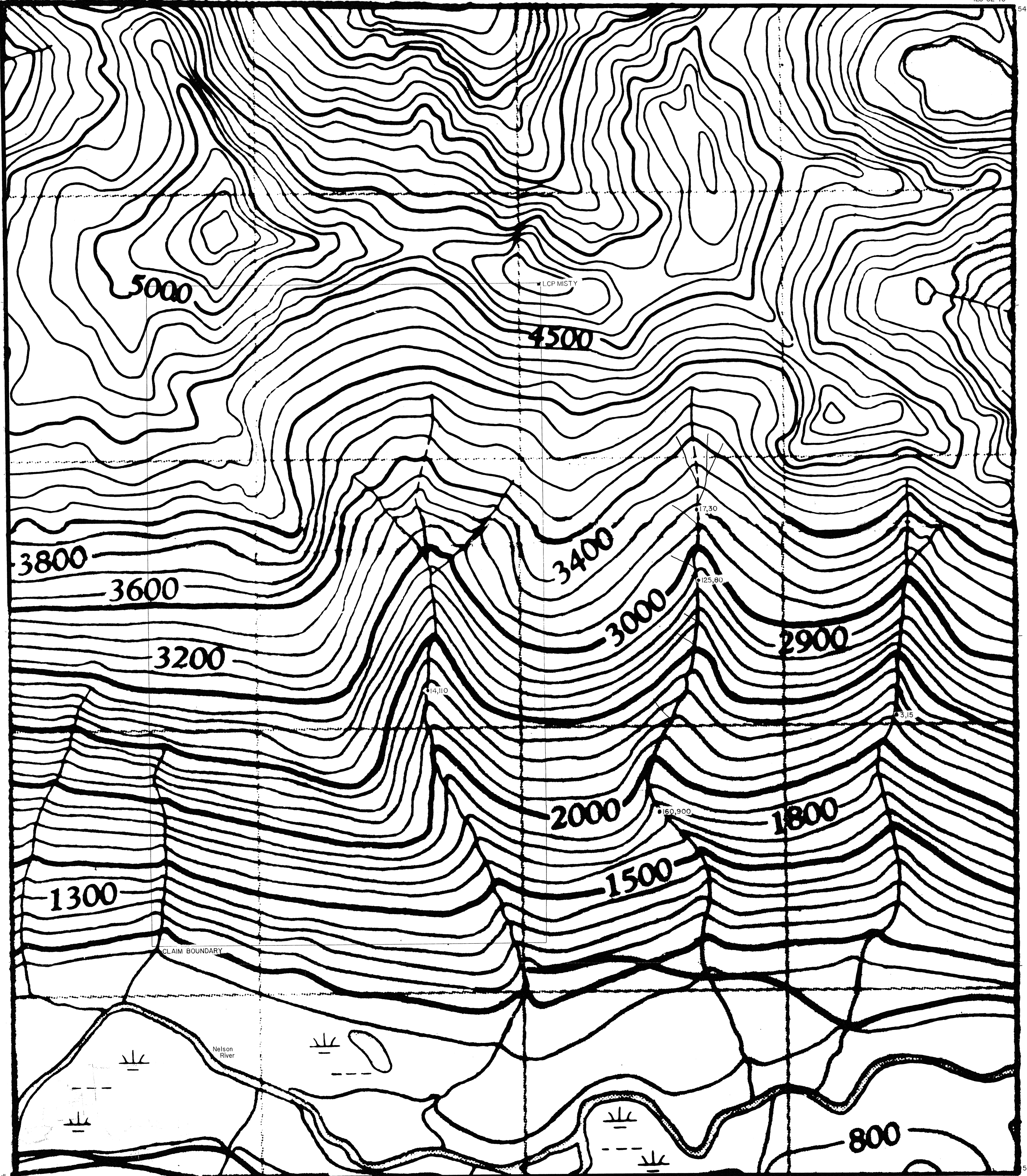
CCH RESOURCES LTD.			
NTS 103 1/10,15			
AIYANSH PROJECT - MISTY GROUP			
SAMPLE LOCATIONS and GEOLOGICAL OBSERVATIONS			
DRAWN BY NJW	DATE September 1979	PROJECT No 552	PLAN No 552-1
REVISED BY	DATE	SCALE 1:5000	

128°56'13"

128°52'40"

54°46'7"

54°46'7"

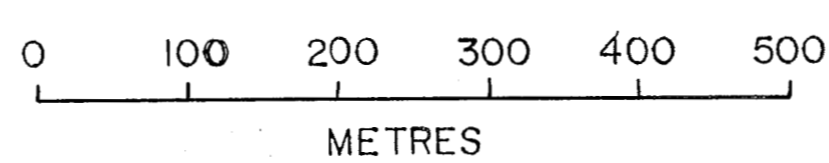


54°43'34"

54°43'34"

128°56'13"

128°52'40"



LEGEND

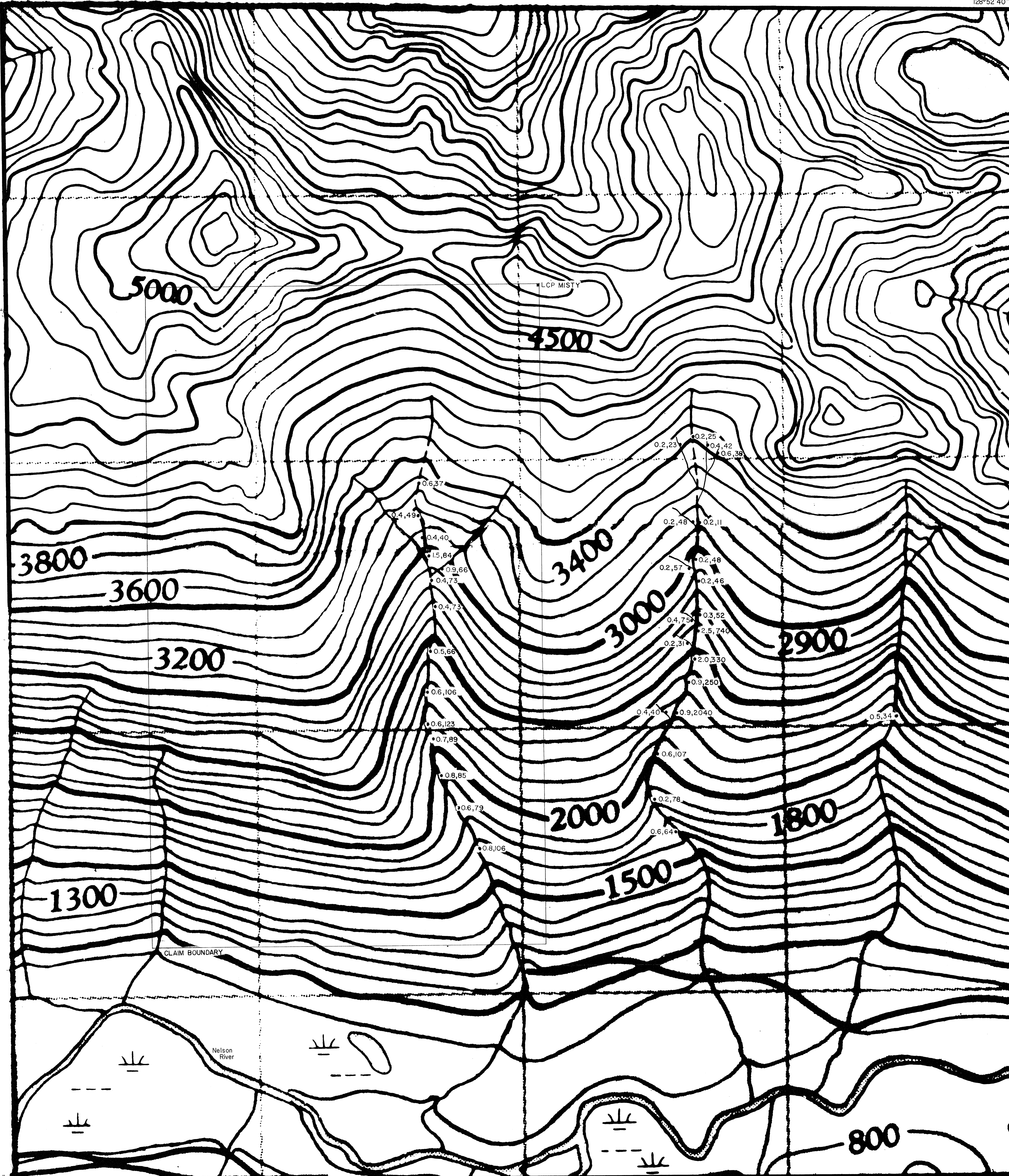
• 3,15 W (ppm), Au (ppb) in pan concentrates

MINERAL RESOURCES BRANCH
ASSESSMENT REPORT
8201
NO.

CCH RESOURCES LTD.			
NTS 103 1/10,15			
AIYANSH PROJECT - MISTY GROUP			
TUNGSTEN and GOLD VALUES in STREAM GRAVEL CONCENTRATES			
DRAWN BY: NJW	DATE: September 1979	PROJECT No: 552	PLAN No: 552-2
REVISED BY:	DATE:	SCALE: 1:5000	

128°56'13"

128°52'40"

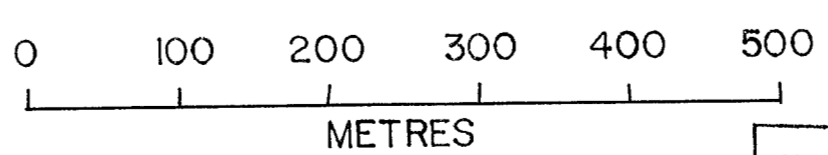


54°43'34"

54°43'34"

128°56'13"

128°52'40"



LEGEND

• 0.2,31 Ag,Pb (ppm) in stream silt samples

MINERAL RESOURCES BRANCH
 8201
 NO.

CCH RESOURCES LTD.

NTS-103 1/10,15

AIYANSH PROJECT - MISTY GROUP

SILVER and LEAD VALUES
in
STREAM SILT SAMPLES

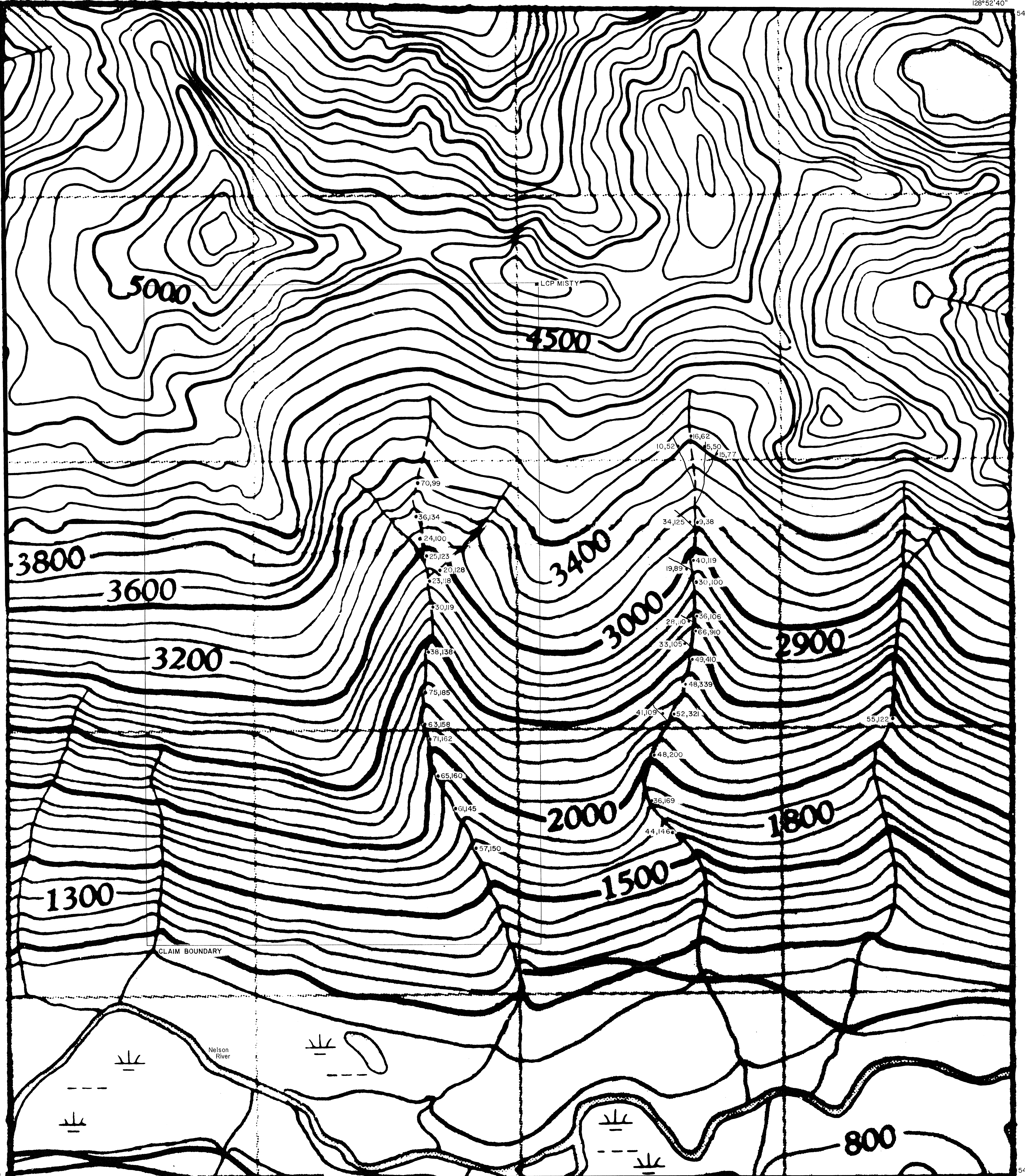
DRAWN BY NJW	DATE September 1979	PROJECT No 552	PLAN No 552-3
REVISED BY	DATE	SCALE 1:5000	

128°56'13"

128°52'40"

54°46'7"

54°46'7"

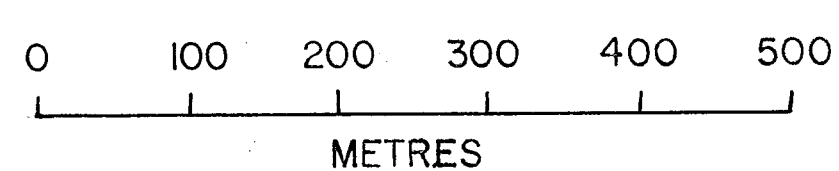


128°56'13"

128°52'40"

54°43'34"

54°43'34"



LEGEND

• 25,123 Cu,Zn(ppm) in stream silt samples

MINERAL RESOURCES CONSULTANTS
 ASSOCIATES LTD.
8201
 NO.

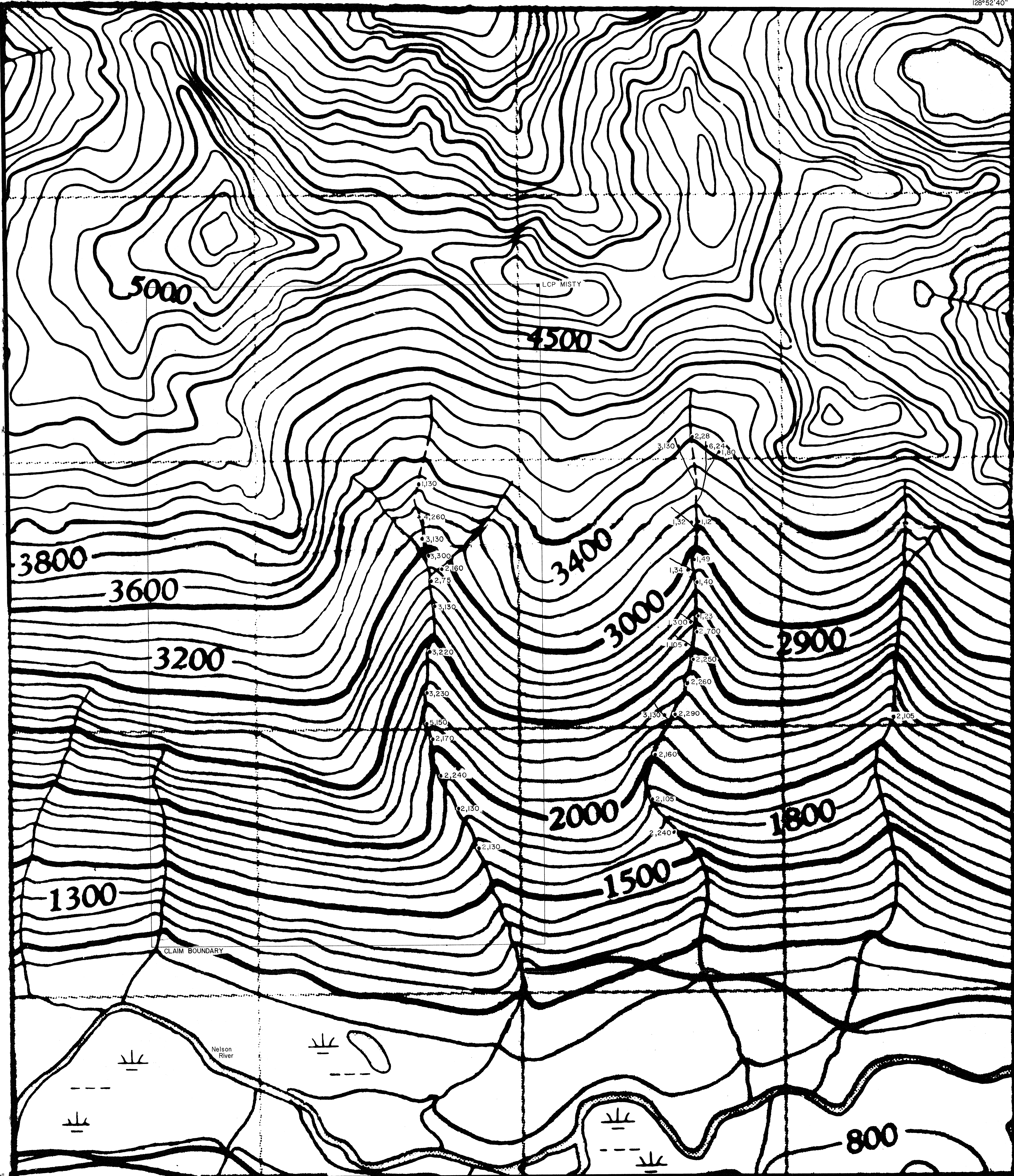
CCH RESOURCES LTD.			
NTS 103 1/10,15			
AIYANSH PROJECT - MISTY GROUP			
COPPER and ZINC VALUES in STREAM SILT SAMPLES			
DRAWN BY NJW	DATE September 1979	PROJECT No 552	PLAN No 552-4
REVISED BY	DATE	SCALE 1:5000	

128°56'13"

128°52'40"

54°46'7"

54°46'7"

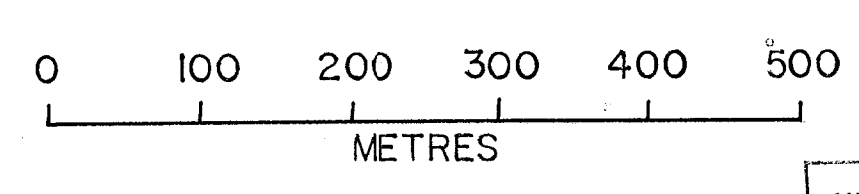
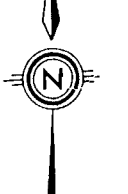


54°43'34"

54°43'34"

128°56'13"

128°52'40"



LEGEND
 • 2,150 Mo, As (ppm) in stream silt samples

AMERICAN GEOPHYSICAL FRANCH
 8201

CCH RESOURCES LTD.			
NTS 103 1/10,15			
AIYANSH PROJECT - MISTY GROUP			
MOLYBDENUM and ARSENIC VALUES in STREAM SILT SAMPLES			
DRAWN BY NJW	DATE September 1979	PROJECT No 552	PLAN No 552-5
REVISED BY	DATE	SCALE 1:5000	