

GEOCHEMICAL REPORT

- on the -

PINE GROUP OF CLAIMS

BRALORNE DISTRICT

Lillooet Mining Division
British Columbia

- for -

W. A. Cook,
P. O. Box 398,
LILLOOET, B.C.

MINERAL RESOURCES BRANCH
ASSESSMENT REPORT

8292

Covering: Poplar, Pine, Alder, Pinola Fr., Poplar Fr., Jean, Malcolm, Vi, Aspen, Kathleen Fr., Diane #1 Fr., Nancy #3, Nancy #5, Fawn Fr.

Work Performed: July 10 - July 20, 1980.

Located: (1). 50°49' N; 122° 48'W.
(2). NTS Map 92J/15 W.
(3). 5 km. north of Bralorne, B. C.

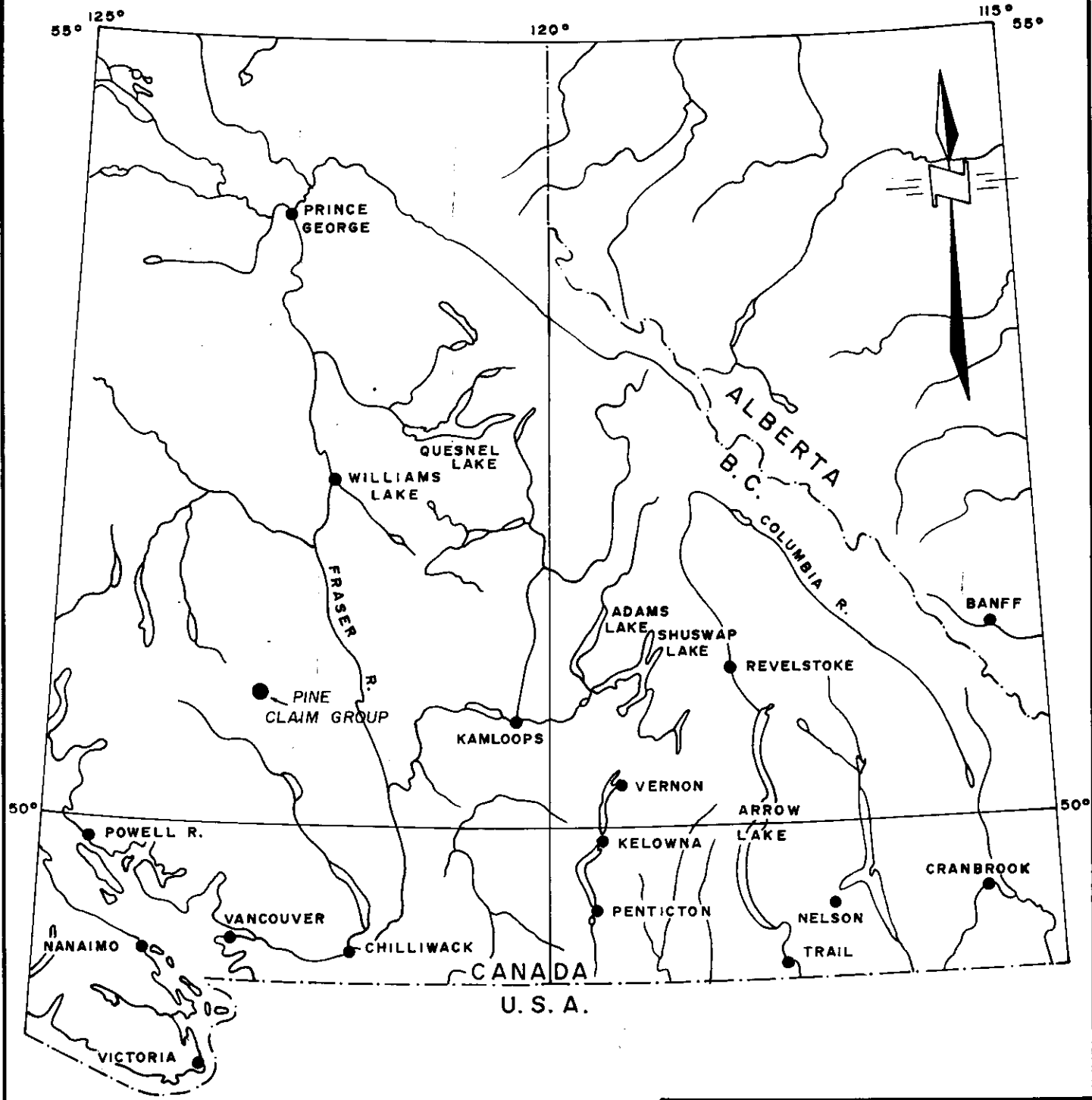
PREPARED BY:

KERR, DAWSON AND ASSOCIATES LTD.,
#1-219 Victoria Street,
Kamloops, B.C.

J. M. Dawson, P. Eng.,
August 18, 1980.

INDEX

	<u>Page No.</u>
INTRODUCTION	1
PROPERTY	2
LOCATION AND ACCESS	3
PHYSIOGRAPHY AND VEGETATION	4
HISTORY	5
GEOLOGY	6
GEOCHEMISTRY	7
APPENDIX A: - PERSONNEL	
APPENDIX B: - STATEMENT OF EXPENDITURES	
APPENDIX C: - WRITER'S CERTIFICATE	
APPENDIX D: - MAPS	
Figure #222A-1 - Location Map	
Figure #222A-2 - Index Map	
Figure #222A-3 - Gold Concentration in Soils	
Figure #222A-4 - Antimony Concentration in Soils	



<p>LOCATION MAP</p> <p>PINE CLAIM GROUP</p> <p>LILLOOET MINING DIVISION, B.C.</p>	
<p>Date: Aug. 1980</p>	<p>Scale: 1" = 64 Miles</p>
<p>Dwn by: W.G.</p>	<p>Dwg no. 222 A-1</p>

INTRODUCTION

The Pine group of claims is a contiguous block of reverted crown granted claims in the heart of the Bralorne camp.

Renewed interest in this district and the dramatic increase in the price of gold led to an evaluation of the subject claims.

Soil samples were collected on a grid pattern on the claims and analysed for gold and antimony. The results of this work were interpreted and are appended on a series of maps accompanying this report.

PROPERTY

The subject property consists of 14 contiguous, reverted crown granted claims aggregating 510.04 acres as follows:

<u>Claim Name</u>	<u>Record No.</u>	<u>Lot No.</u>	<u>Expiry Date</u>
Poplar	860	5184	July 31, 1980
Pine	859	5183	July 31, 1980
Alder	858	5182	July 31, 1980
Pinola Fr.	857	3658	July 31, 1980
Poplar Fr.	861	5185	July 31, 1980
Jean	846	5188	July 25, 1980
Malcolm	847	5187	July 25, 1980
Vi	844	5186	July 25, 1980
Aspen	862	6483	July 31, 1980
Kathleen Fr.	863	6484	July 31, 1980
Deane #1 Fr.	864	6841	July 31, 1980
Nancy #3	865	6842	July 31, 1980
Nancy #5	866	6843	July 31, 1980
Fawn Fr.	1110	4822	Jan. 16, 1981

Disposition of these claims is shown on figure #222A-2.

The registered owner of the claims is W. A. Cook.

LOCATION AND ACCESS

The claims are located in southwestern British Columbia, approximately 60 km. west of Lillooet and about 165 km. north of Vancouver. Approximate geographic center of the claims is at 50°49' north latitude and 122°48' west longitude.

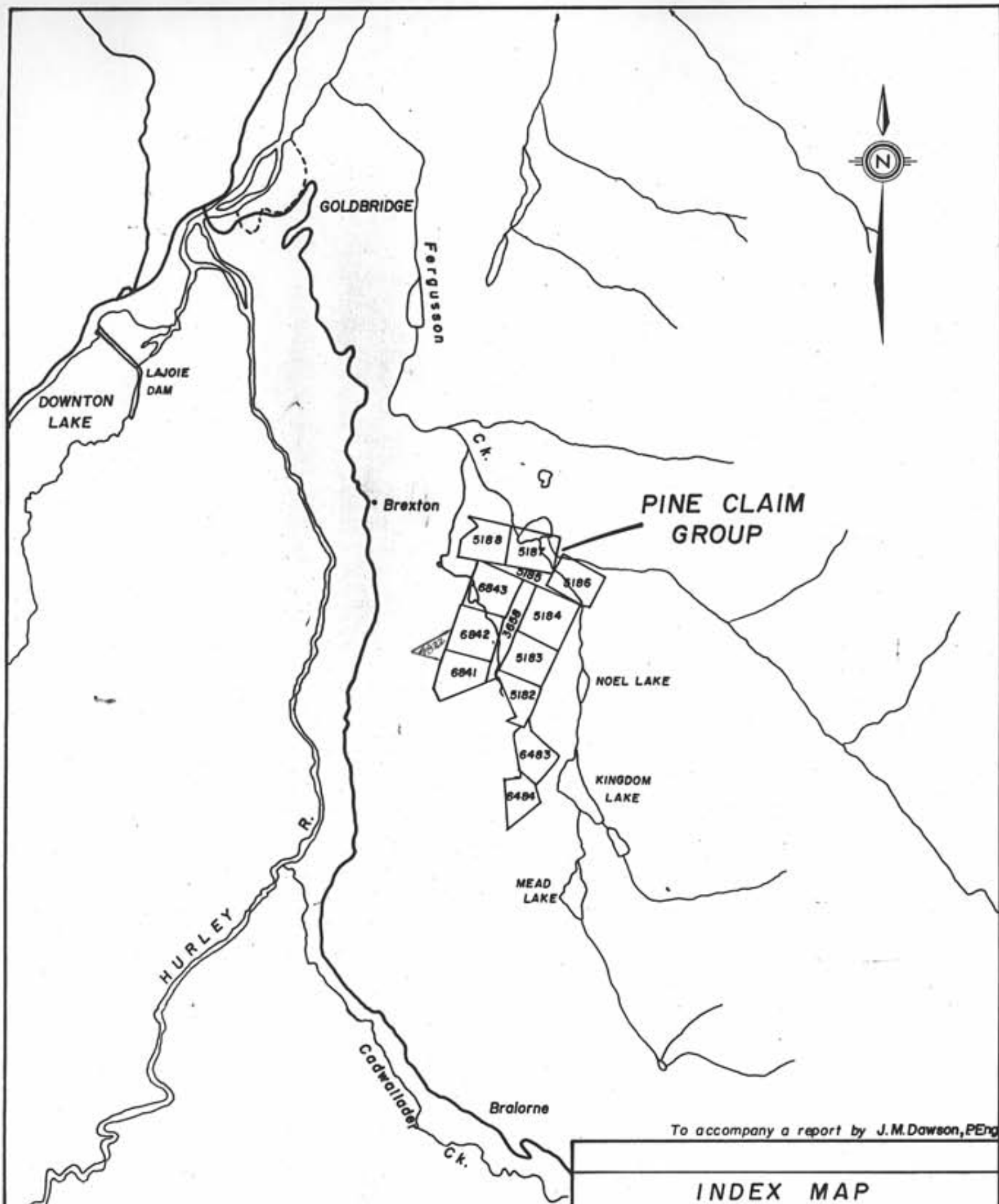
Access to the property is by approximately 8 km. of gravel road from the village of Goldbridge. The latter 2 1/2 km. from the main Goldbridge-Bralorne highway is strictly four-wheel drive only.

PHYSIOGRAPHY AND VEGETATION

The property consists of an irregular, elongate north-south trending piece of ground covering parts of a gently rolling, plateau-like area between the Bendor Ranges to the east and the deeply incised valley of Hurley River to the west.

Elevations vary between 3,900 and 4,300 feet a.s.l. In general, the property slopes gently from south to north.

The claims are entirely covered by a mature growth of pine with minor spruce and fir. There are some low swampy areas around lakes and in some creek bottoms.



To accompany a report by J.M.Dawson, PEng

INDEX MAP PINE CLAIM GROUP LILLOOET MINING DIVISION, B.C.	
Tech. Work By: Kerr, Dawson & Assoc. Ltd.	Scale: 1:50,000
Drawn By: W.G.	Date: AUG. 1980.
Approved By: J.M.D.	Flg No. 222 A-2

N.T.S. NO. 92J/15

HISTORY

There is no specific reference to any documented work having been done on the claims, but a number of prospect pits and at least one diamond drill set up were noted. The prospect pits did not appear to have reached bedrock.

This work probably dates from the 1930's or early 1940's during the period of intense exploration activity peripheral to the Bralorne mine.

GEOLOGY

The property is virtually entirely overburden covered - only one outcrop was noted near the southern extremity of the claims. This outcrop appeared to be greenstone or andesite breccia of the Pioneer Formation.

According to Cairns map (1937) the eastern part of the property is probably underlain by the Fergusson Series of volcanics and mixed limestone, argillite and chert. The western part of the claims may be underlain by the Noel Formation, consisting of argillaceous and tuffaceous sediments. Minor amounts of the western and southern parts of the property appear to be underlain by the Pioneer Formation.

GEOCHEMISTRY

A total of 169 soil samples were collected on or adjacent to the subject claims. Samples were collected at 50 meter intervals on east-west cross lines. The cross lines were spaced roughly 300 meters apart (see figures #222A-3 and #222A-4).

Samples were collected from the "B" horizon where possible. This requires digging a hole 60 to 80 cm. deep and there is a layer of recent volcanic ash below the humus which can be as much as 80 cm. thick. Sample stations were marked with the appropriate grid co-ordinates. Samples were stored and shipped in waterproof kraft envelopes.

Samples were analysed for gold and antimony by Acme Analytical Laboratories of Vancouver. For gold, extraction was attained using fire assay and hot aqua regia. For antimony, extraction was by hot dilute aqua regia. The method of analysis for both elements was atomic absorption spectrophotometry.

Statistical analyses for both metals were performed similarly by calculating the mean and standard deviation and classifying the data into the following categories:

Background	0	-	Mean
Possibly Anomalous	Mean	-	(Mean + 1 Std.Dev.)
Probably Anomalous	(Mean + 1 Std. Dev.)	-	(Mean + 2 Std.Dev.)
Definitely Anomalous	>	(Mean + 2 Std. Dev.)	

The values were plotted on 1:5,000 scale base maps of the property and definitely anomalous, probably anomalous and possibly anomalous values were outlined (see figures #222A-3 and #222A-4).

There is no distinctive pattern for anomalous gold values except that there is a much greater concentration of higher values towards the south portion of the claims. The highest gold value (440 PPB) lies outside the property boundary. The second highest (300 PPB) is isolated near the northeast corner of the claims. Similarly higher antimony values are scattered but are found predominantly in the south. There does not seem to be much actual coincidence of anomalous values for both metals.

Although the results of this survey are not encouraging, it may be that the values are not reflecting bedrock. In many places, the heavy cover of recent ash gave difficulty in obtaining good samples. In addition, it may be that the overburden which is extensive may in places be so thick as to obscure a true bedrock geochemical response.

Respectfully submitted:

KERR, DAWSON AND ASSOCIATES LTD.,



A handwritten signature in cursive script, appearing to read "James M. Dawson", written over a horizontal line.

James M. Dawson, P. Eng.,
GEOLOGIST

Kamloops, B. C.,
August 18, 1980.

APPENDIX A

PERSONNEL

PERSONNEL

J. M. Dawson, P. Eng. Geologist - July 15, July 17 (1/2 day)

- 1 1/2 days

M. Dawson Prospector - July 15, July 17, July 18

- 3 days

R. Henderson Prospector - July 15, July 17, July 18

- 3 days

APPENDIX B

STATEMENT OF EXPENDITURES

STATEMENT OF EXPENDITURES

(1). PERSONNEL:

J. M. Dawson, P. Eng., 1 1/2 days @ \$250.00/day	\$375.00	
M. Dawson, 3 days @ \$115.00/day	345.00	
R. Henderson, 3 days @ \$115.00/day	<u>345.00</u>	\$1,065.00

(2). EXPENSES AND DISBURSEMENTS:

(a). Room and Board 7 1/2 man days @ \$35.00/man/day	\$262.50	
(b). Truck Rental 3 days @ \$30.00/day \$90.00 75 mi. @ 30¢/mile . . <u>22.50</u> .	112.50	
(c). Geochemical Analyses	768.11	
(d). Sample bags, flagging and field equipment	97.45	
(e). Maps, xerox, telephone, freight, etc.	<u>135.60</u>	<u>1,376.16</u>

TOTAL COSTS \$2,441.16

APPENDIX C

WRITER'S CERTIFICATE

JAMES M. DAWSON, P. ENG.
GEOLOGIST

SUITE 1 - 219 VICTORIA STREET
KAMLOOPS, B.C.

PHONE (604) 374-6427


CERTIFICATE

I, JAMES M. DAWSON, OF KAMLOOPS, BRITISH COLUMBIA, DO HEREBY CERTIFY THAT:

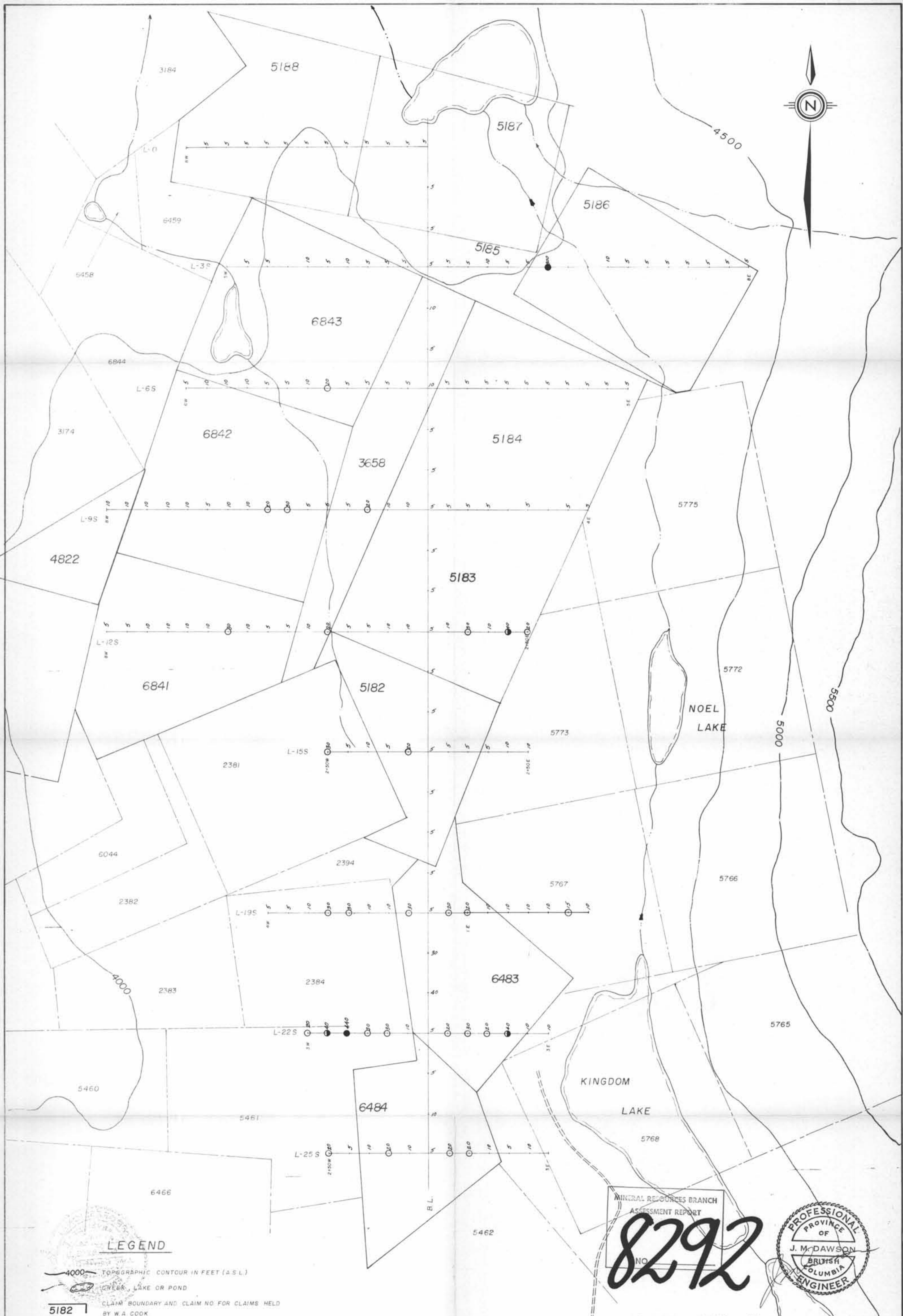
- (1). I am a geologist employed by Kerr, Dawson and Associates Ltd. of Suite #1, 219 Victoria Street, Kamloops, B. C.
- (2). I am a graduate of the Memorial University of Newfoundland - B. Sc. (1960), M. Sc. (1963), a fellow of the Geological Association of Canada and a Member of the Association of Professional Engineers of British Columbia. I have practised my profession for 17 years.
- (3). I am the author of this report which is based on a geochemical exploration programme carried out on the subject property under my supervision.



KERR, DAWSON AND ASSOCIATES LTD.,


James M. Dawson, M. Sc., P. Eng.,
GEOLOGIST

August 18, 1980,
KAMLOOPS, B. C.



LEGEND

- 4000 TOPOGRAPHIC CONTOUR IN FEET (A.S.L.)
- CREEK, LAKE OR POND
- CLAIM BOUNDARY AND CLAIM NO FOR CLAIMS HELD BY W.A. COOK
- CLAIM BOUNDARY AND CL. NO. OF SURROUNDING CLAIMS
- GRID LINE WITH STATION MARKER WITH SOIL GEOCHEMICAL VALUE FOR GOLD IN PARTS PER BILLION (PPB)
ANTIMONY IN PARTS PER MILLION (PPM)

GEOCHEMICAL CATEGORIES

GOLD (PPB)		ANTIMONY (PPM)	
<12	BACKGROUND	<2.2	
12 - 36	POSSIBLY ANOMALOUS	2.3 - 3.1	○
37 - 60	PROBABLY ANOMALOUS	3.2 - 3.9	◐
>60	DEFINITELY ANOMALOUS	>3.9	●

MINERAL RESOURCES BRANCH
ASSESSMENT REPORT

8292

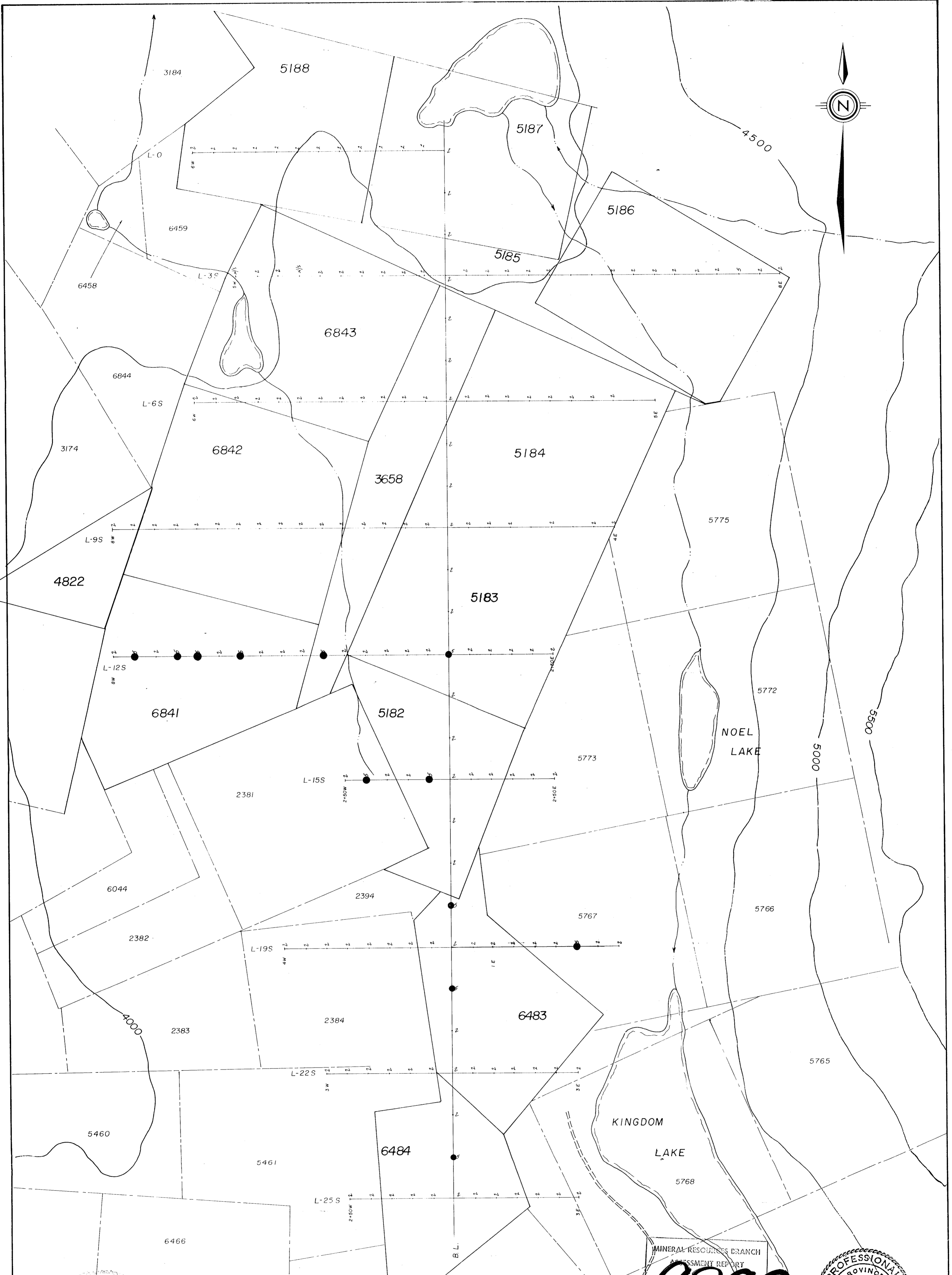


To accompany a report by J.M. Dawson, P.Eng.

**GOLD IN SOILS
PINE CLAIM GROUP**

LILLOOET MINING DIVISION, B.C.

TECHNICAL WORK BY: KERR, DAWSON AND ASSOCIATES LTD.	SCALE: 1:5,000 0 50 100 m 200
DRAWN BY: W.G.	DATE: AUGUST, 1980
APP'D BY: J.M. DAWSON, P.ENG.	FIG. NO. 222-A-3



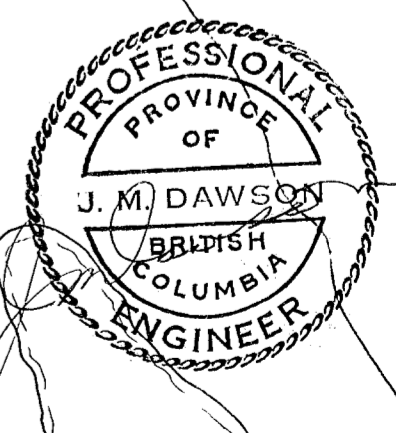
LEGEND

- 4000 TOPOGRAPHIC CONTOUR IN FEET (A.S.L.)
- CREEK, LAKE OR POND
- CLAIM BOUNDARY AND CLAIM NO FOR CLAIMS HELD BY W.A. COOK
- CLAIM BOUNDARY AND CL NO OF SURROUNDING CLAIMS
- GRID LINE WITH STATION MARKER WITH SOIL GEOCHEMICAL VALUE FOR GOLD IN PARTS PER BILLION (PPB) ANTIMONY IN PARTS PER MILLION (PPM)

GEOCHEMICAL CATEGORIES

GOLD (PPB)		ANTIMONY (PPM)	
<12	BACKGROUND	<2	
12 - 36	POSSIBLY ANOMALOUS	2.3 - 3.1	
37 - 60	PROBABLY ANOMALOUS	3.2 - 3.9	
>60	DEFINITELY ANOMALOUS	>3.9	

MINERAL RESOURCES BRANCH
ASSESSMENT REPORT
8292



To accompany a report by J.M. Dawson, P.Eng.

**ANTIMONY IN SOILS
PINE CLAIM GROUP**

LILLOOET MINING DIVISION, B.C.

TECHNICAL WORK BY KERR, DAWSON AND ASSOCIATES LTD.	SCALE 1:5,000 0 50 100m 200
DRAWN BY: W.G.	DATE: AUGUST, 1980
APP'D BY: J.M. DAWSON, P.ENG.	FIG. NO. 222-A-4