

ASSESSMENT REPORT

SOIL GEOCHEMISTRY OF THE
LAW 1 GROUP

OMINECA MINING DIVISION

CLAIMS: LAW 1, LAW 2, TOR FRACTION

LOCATION: N.T.S. 94E/6E
57°18' N. Latitude
127°13' W. Longitude

OWNER: S.E.R.E.M. Ltd.

REPORT BY: Joan F. Carne

DATES WORK PERFORMED: August 13-19, 1980

DATE: October 3, 1980

MINERAL RESOURCES BRANCH ASSESSMENT REPORT
8330
NO.

TABLE OF CONTENTS

	<u>Page</u>
INTRODUCTION	1
GEOLOGY	3
GEOCHEMICAL SURVEY	3
RESULTS	4
STATEMENT OF COSTS	8
STATEMENT OF QUALIFICATIONS	9

LIST OF FIGURES

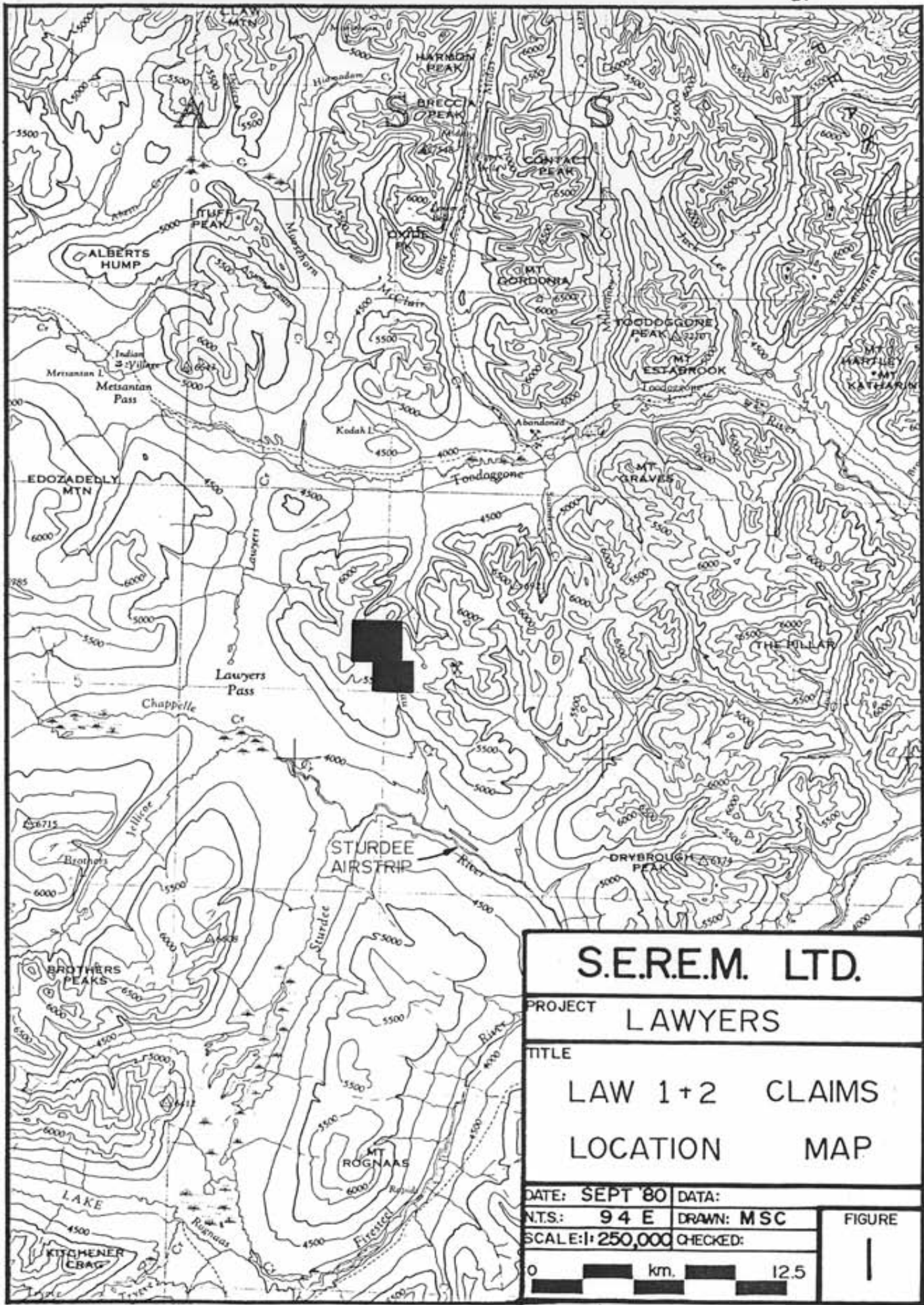
Fig. 1.	Location Map	2
Fig. 2.	Law Soil Grid A - Sample Locations	In pocket
Fig. 3.	Law Soil Grid A - Ag in ppm	In pocket
Fig. 4.	Law Soil Grid A - Au in ppb	In pocket
Fig. 5.	Law Soil Grid B - Sample Locations	In pocket
Fig. 6.	Law Soil Grid B - Ag in ppm	In pocket
Fig. 7.	Law Soil Grid B - Au in ppb	In pocket
Fig. 8.	Law Soil Grid A - Contoured	6
Fig. 9.	Law Soil Grid B - Contoured	7

INTRODUCTION

The Law 1 and 2 claims (20 and 12 units respectively which, combined with the Tor fraction, form the Law 1 Group) are located approximately 16 km southwest of Toodoggone Lake and 6 km east of Lawyers Creek on the Toodoggone River map sheet 94E (Figure 1). Access to the property is by fixed wing from Smithers (290 km) to the Sturdee Valley airstrip and by helicopter to the property (16 km).

The Law 1 and 2 claims were staked in August of 1978 and recorded September 28, 1978 by S.E.R.E.M. Ltd. In part, this ground covers the old Lawyers claims on which Kennco conducted soil and rock geochemical surveys and mapped the geology (Assessment Report No. 3416). The present study consists of closer spaced sampling in areas with anomalous results from Kennco work.

Work done this season includes two soil grids on the Law 1 claim. A total of 506 samples were collected over an area of .54 square kilometers.



57'
30"

57'
15"

S.E.R.E.M. LTD.	
PROJECT	LAWYERS
TITLE	LAW 1+2 CLAIMS LOCATION MAP
DATE: SEPT '80	DATA:
N.T.S.: 94 E	DRAWN: MSC
SCALE: 1:250,000	CHECKED:
FIGURE 	

127°
15'

127°
00'

GEOLOGY

The Law 1 group of claims is underlain by Jurassic volcanic rocks of the Hazelton Group. In this area the upper portion of the Hazelton Group is informally referred to as the Toodoggone volcanics and consists of porphyritic flows, crystal lapilli tuffs, water lain tuffs and sedimentary rocks related to the volcanics. There is very little outcrop on the two grids themselves. Known mineralization occurs to the north on the adjoining New Lawyers claim block.

GEOCHEMICAL SURVEY

Grid A is located in scrub timber near treeline. The western portion of the grid is in poorly developed soil weathered from bedrock only a meter or two below surface. In the valley, especially the central portion of the grid, bedrock is covered by several metres of overburden which is probably of glacial origin. A sample interval of 50 metres was used.

On grid A the baseline was surveyed with chain and compass with locations flagged on the trees. Cross lines were run with compass and hip chain and sample sites were flagged and labelled. A numbering error was made along the base line so there are two lines 4+50E. To avoid confusion, they have been drafted as labelled on the ground.

Grid B is located entirely above treeline in low relief somewhat wet ground. Soil horizons here are also poorly developed and much of the material appears to be fine-grained alluvium. Samples were collected at 30 metre intervals.

The baseline for grid B was surveyed with chain and compass and marked with pickets. Cross lines were run with compass and hip chain.

Figures 2 and 5 present the sample site distribution for the two grids. Samples were shipped to North Vancouver and analysed by Min-En Laboratories using standard atomic absorption techniques.

RESULTS

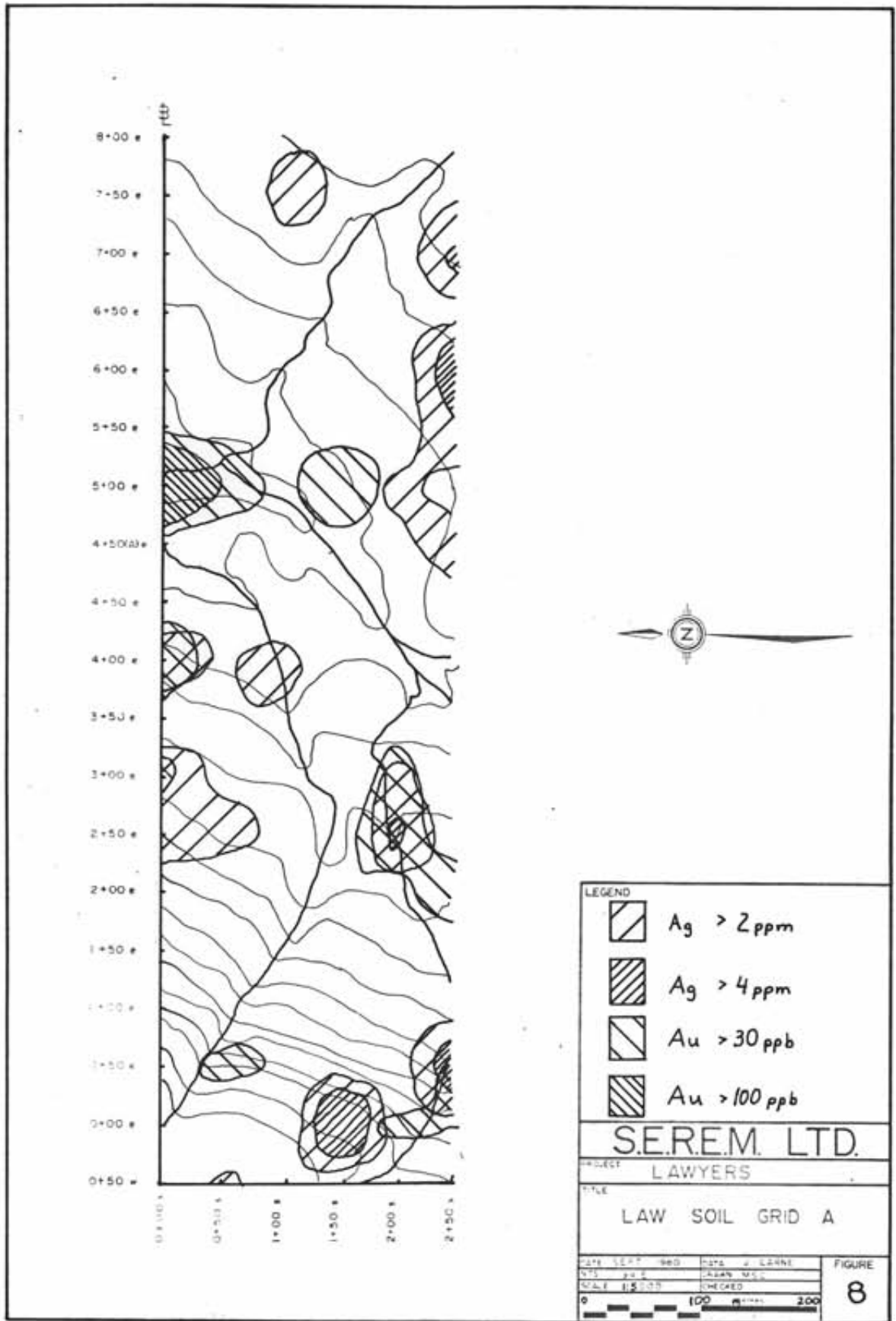
Silver and gold values obtained for soils on Grids A and B are plotted on Figures 3, 4, 6 and 7. From previous work in the area, silver values of between 2 and 4 ppm and gold values of between 100 and 300 ppb are considered weakly anomalous.

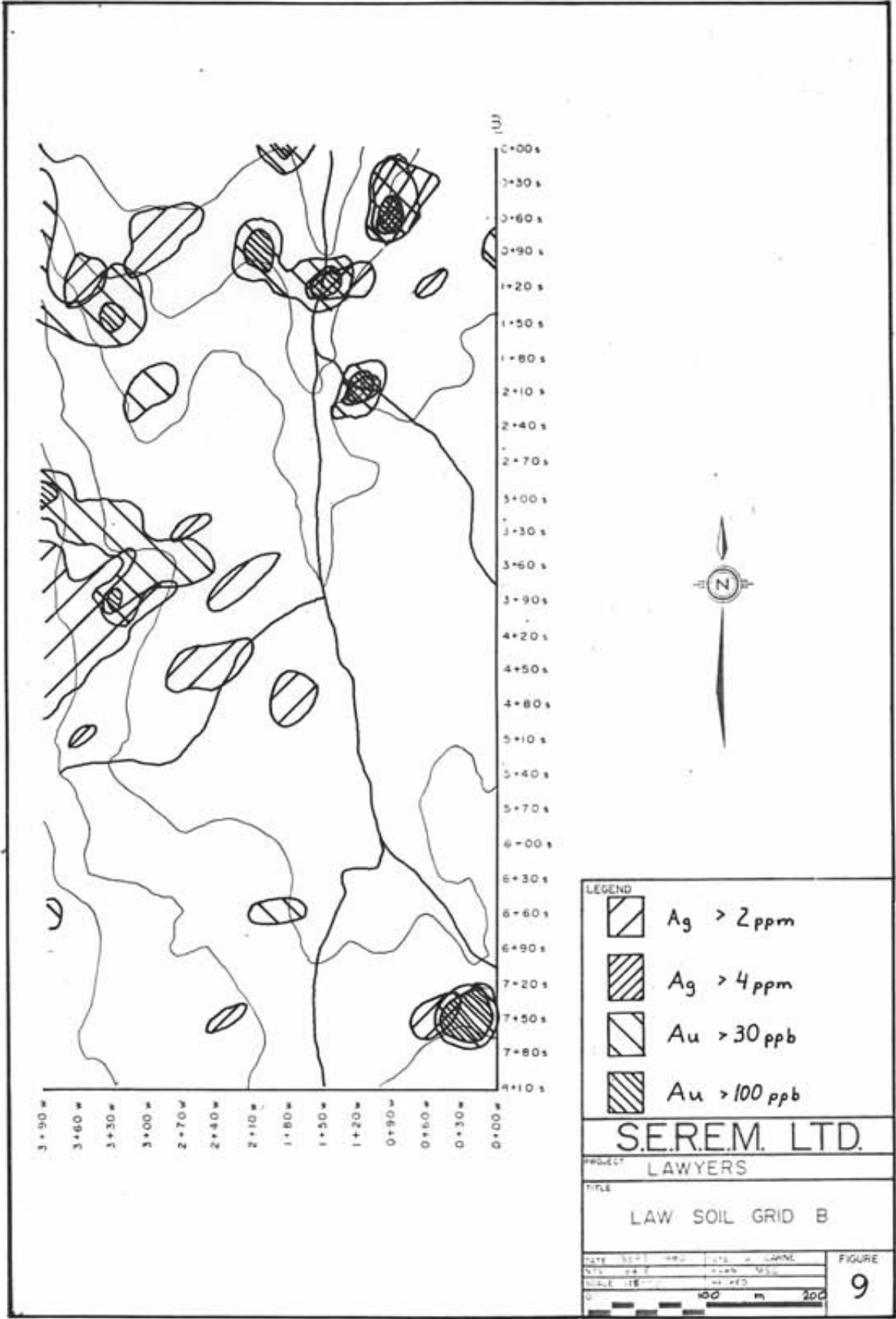
These results are contoured on Figures 8 and 9. Grid A has several areas of weakly anomalous silver values, occasionally with higher values within these zones. However,

they are all quite small and none coincide with even weakly anomalous gold values. Best gold values at 5+00E may be related to placer effects in alluvium from showings upstream.



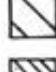
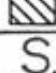
Grid B has several isolated high values which show a weak east-west trend at the north end of the grid. Gold and silver are coincident in several localities. There is, however, no widespread continuous anomaly between the old high values. Small pits may be useful in testing some of these isolated high values.

A handwritten signature in black ink, appearing to read "J. M. C.", is located in the lower right quadrant of the page. The signature is stylized and slanted.





LEGEND

-  Ag > 2 ppm
-  Ag > 4 ppm
-  Au > 30 ppb
-  Au > 100 ppb

S.E.R.E.M. LTD.
LAWYERS

TITLE
LAW SOIL GRID B

SCALE 1:50000
0 100 200 m

FIGURE
9

STATEMENT OF COSTSDescriptionWages

J. Rushton	Aug. 13, 17, 19	3 days @ \$ 50/day	\$150
R. Stowe	Aug. 13, 17, 19	3 days @ \$ 40/day	120
M. Carr	Aug. 17	1 day @ \$ 70/day	70
S. Crawford	Aug. 17	1 day @ \$ 70/day	70
R. MacRae	Aug. 17	1 day @ \$ 40/day	40
G. Price	Aug. 17	1 day @ \$ 55/day	55
J. Sweeney	Aug. 17	1 day @ \$ 40/day	40
J. Carne	Aug. 13, 17 (field)	2 days @ \$100/day	200
J. Carne	1 day (report)	1 day @ \$100/day	<u>100</u>
			\$845

Room & Board

13 man days @ \$28/man day	364
includes food, equipment, fuel for camp	

Transportation

Camp Support - Fixed Wing and Helicopter	
13 days @ \$18/man day	234
Helicopter to Property	
1:05 hr. @ \$310/hr. + \$102/hr. fuel	446

Analyses

506 soils analysed for Ag, Au @ \$6.60/sample	3,340
Shipping of samples	125

Report expenses

	<u>50</u>
--	-----------

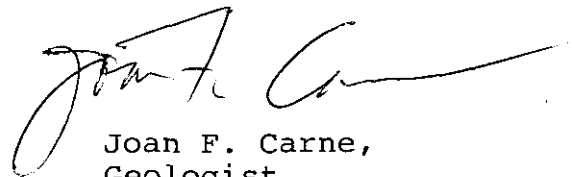
Total	<u><u>\$5,404</u></u>
-------	-----------------------

STATEMENT OF QUALIFICATIONS

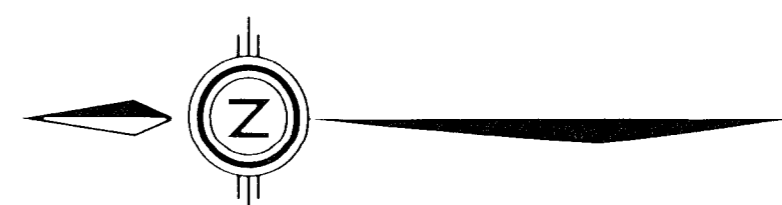
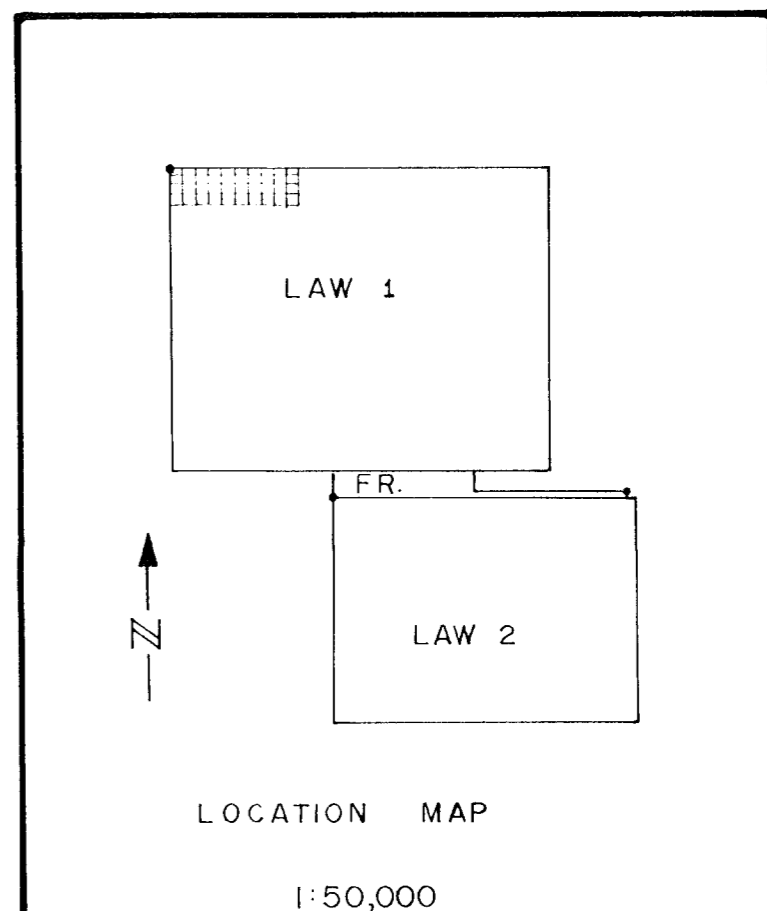
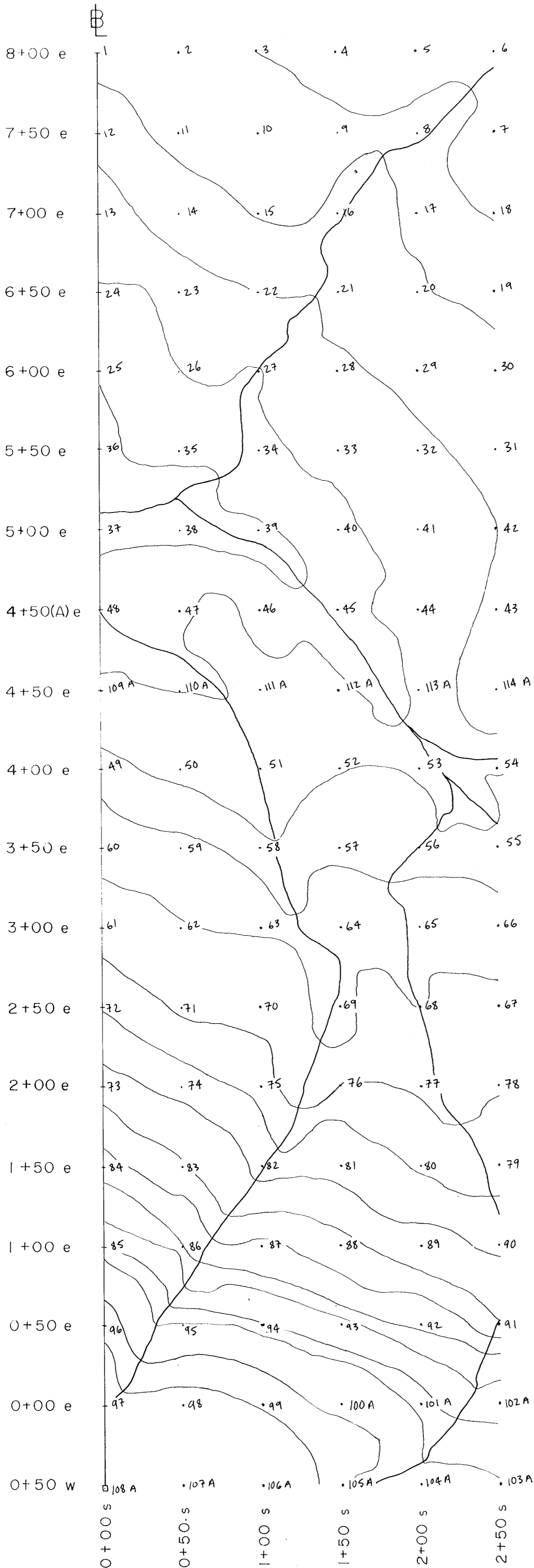
I, JOAN F. CARNE, of Vancouver, B.C. hereby certify that:

1. I hold a B.A. in geology from Middlebury College, Middlebury, Vermont and an M.Sc. in geology from the University of British Columbia.
2. I am a geologist employed by S.E.R.E.M. Ltd. of 300 - 535 Thurlow Street, Vancouver, B.C., V6E 3L2.
3. I have worked in geology and mineral exploration for four years.
4. The field work described in this report was carried out under my supervision.
5. I have no financial interest in the claims covered by this report or in S.E.R.E.M. Ltd.

Dated this 3rd day of October, 1980 at Vancouver, B.C.



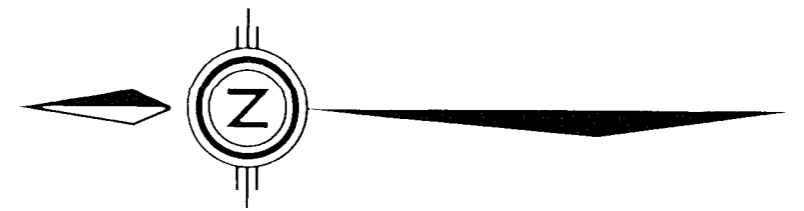
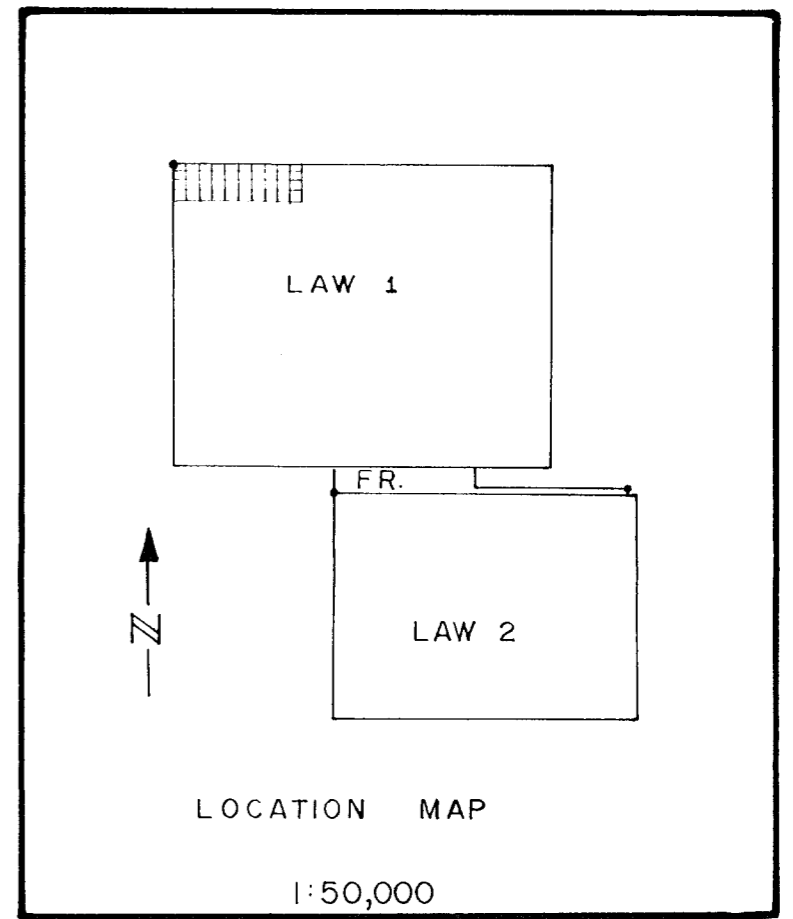
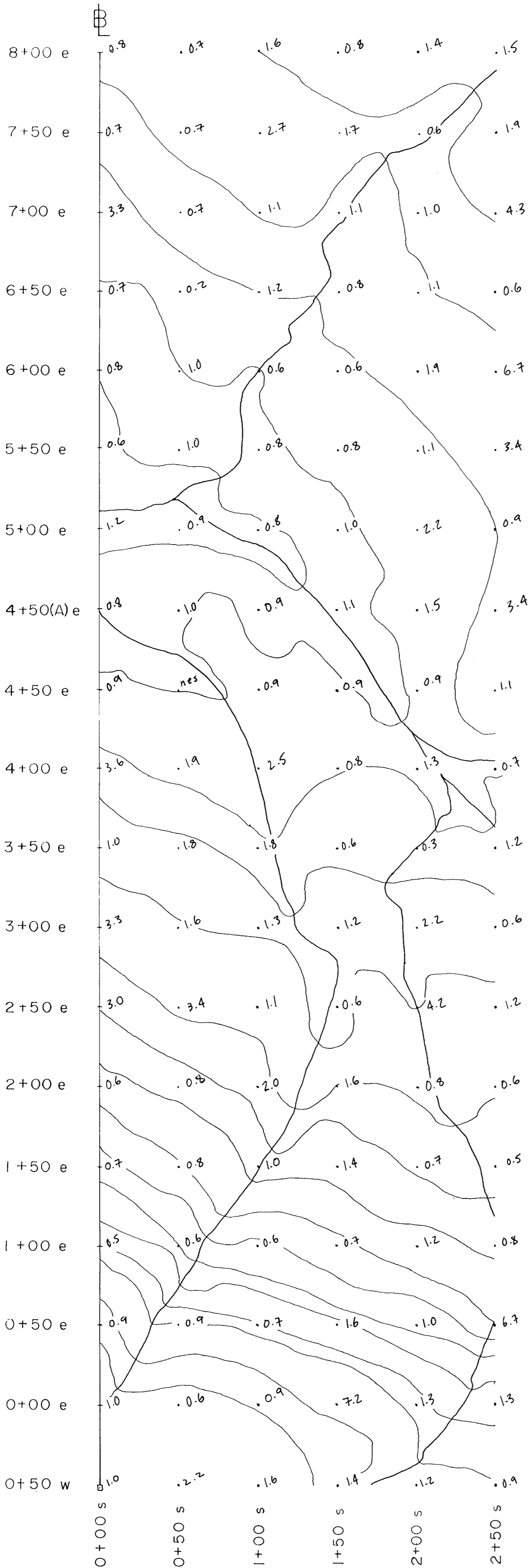
Joan F. Carne,
Geologist.



LEGEND	
SAMPLE LOCATIONS	
CONTOUR INTERVAL 10 m.	
MINERAL RESOURCES BRANCH ASSESSMENT REPORT	
8330	
S.E.R.E.M. LTD.	
PROJECT LAWYERS	
TITLE LAW SOIL GRID A	
DATE SEPT. 1980	DATA J. CARNE
NTS 94 E	DRAWN MSC
SCALE 1:2000	CHECKED
0 100 metres 200	
FIGURE 2	

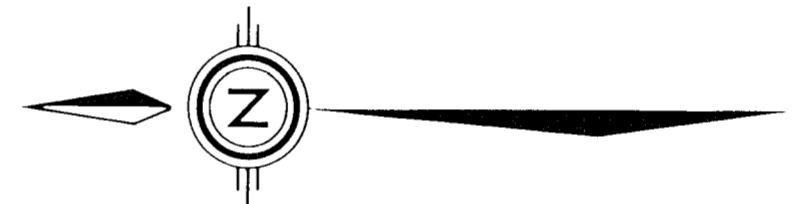
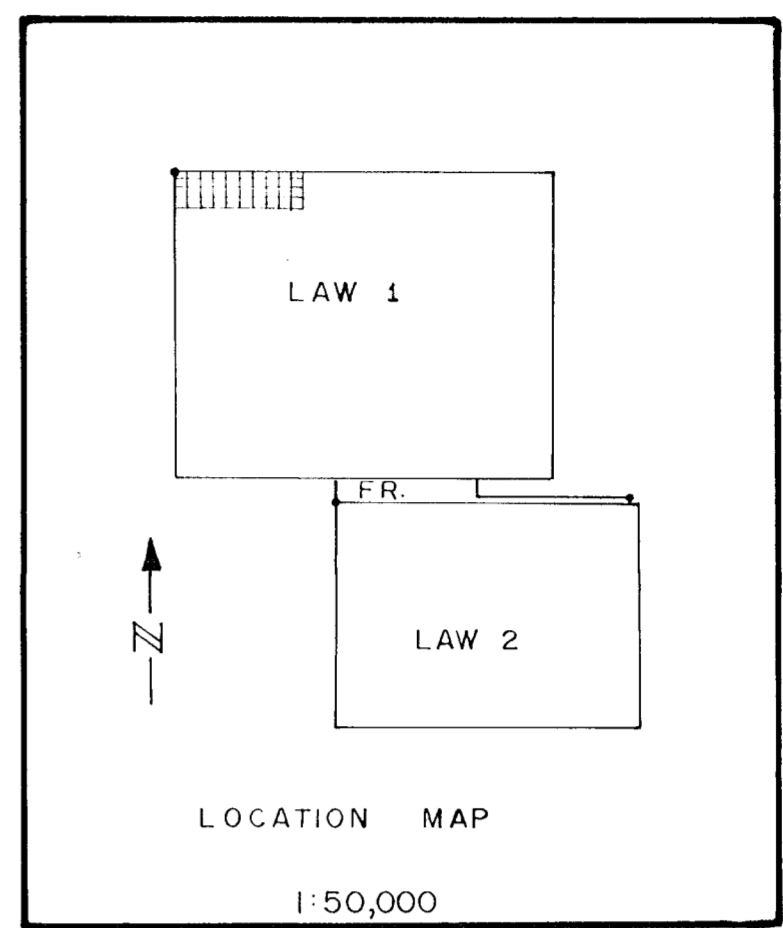
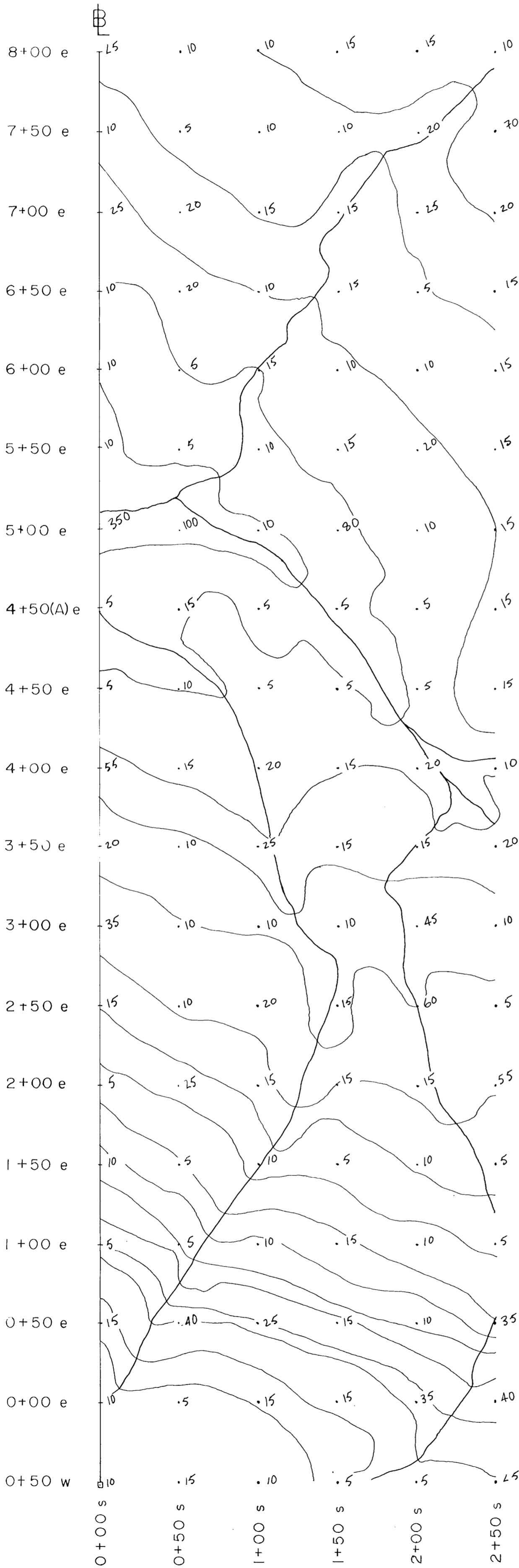
MINERAL RESOURCES BRANCH
ASSESSMENT REPORT

J. Carne



LEGEND	
Ag in ppm	
CONTOUR INTERVAL 10 m.	
MINERAL RESOURCES BRANCH ASSESSMENT REPORT	
8330	
S.E.R.E.M. LTD.	
PROJECT	LAWYERS
TITLE	LAW SOIL GRID A
DATE	SEPT. 1980
NTS.	94 E
SCALE	1:2000
DATA	CHECKED
DATA	DRAWN MSC
0 100 metres 200	
FIGURE	3

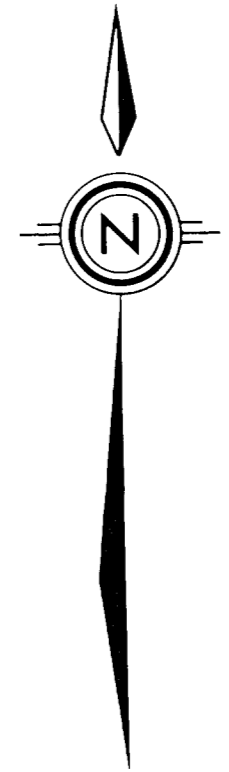
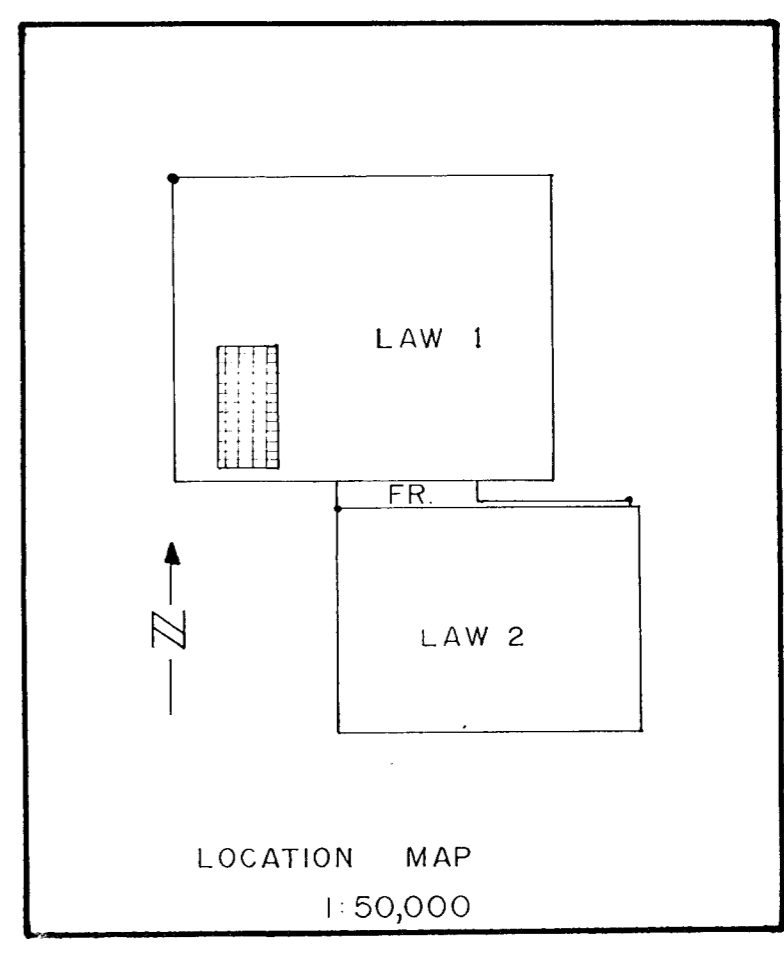
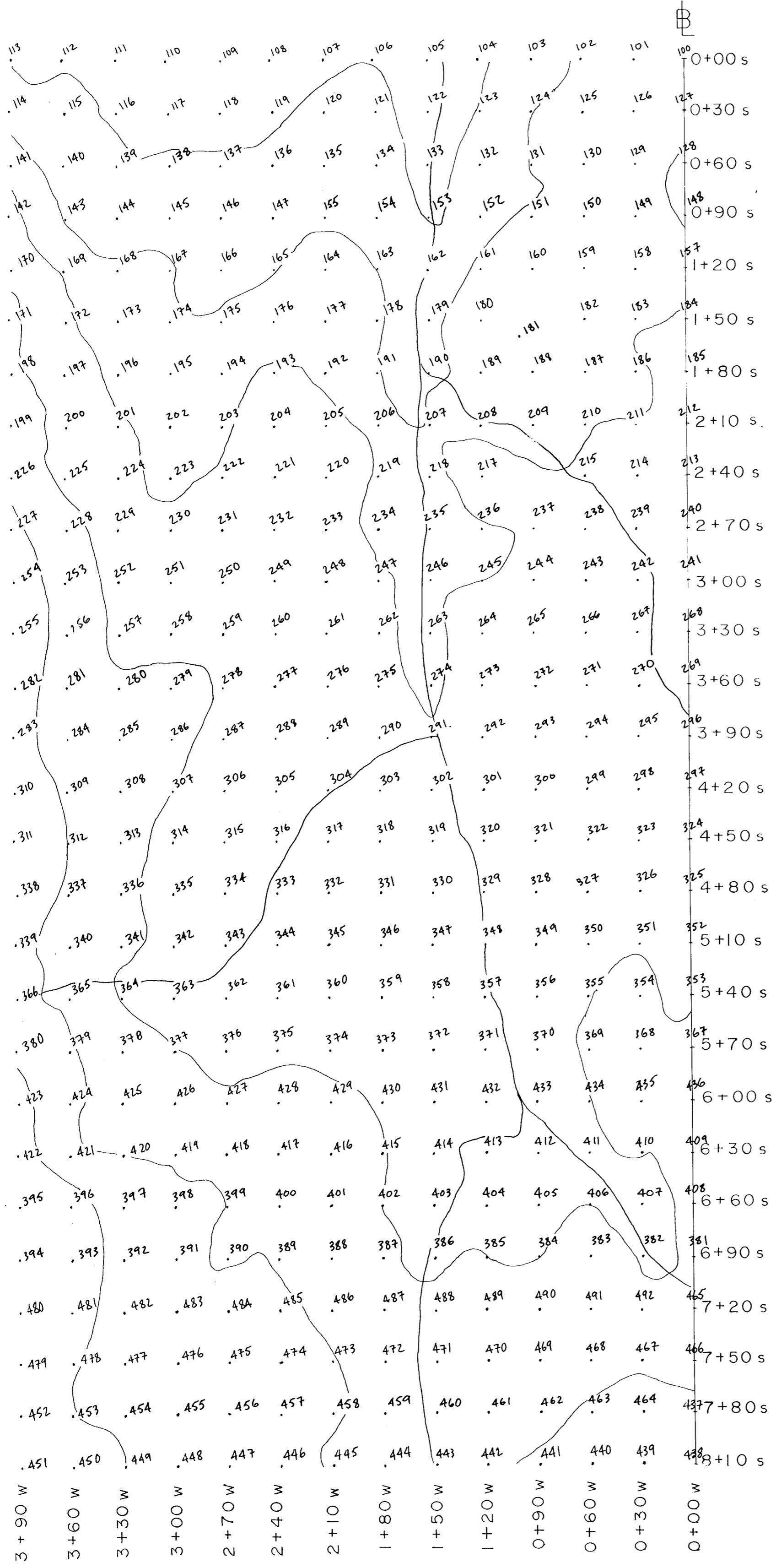
Handwritten signature



MINERAL RESOURCES BRANCH
ASSESSMENT REPORT
8330
NO.

LEGEND	
Au in ppb CONTOUR INTERVAL 10 m.	
S.E.R.E.M. LTD.	
PROJECT LAWYERS	
TITLE LAW SOIL GRID A	
DATE SEPT. 1980	DATA J. CARNE
NTS. 94 E	DRAWN MSC
SCALE 1:2000	CHECKED
0 100 metres 200	
FIGURE 4	

John Carne



LEGEND

SAMPLE LOCATIONS

CONTOUR INTERVAL 10 m.

8330

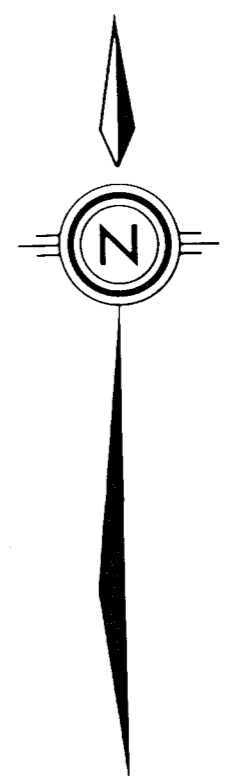
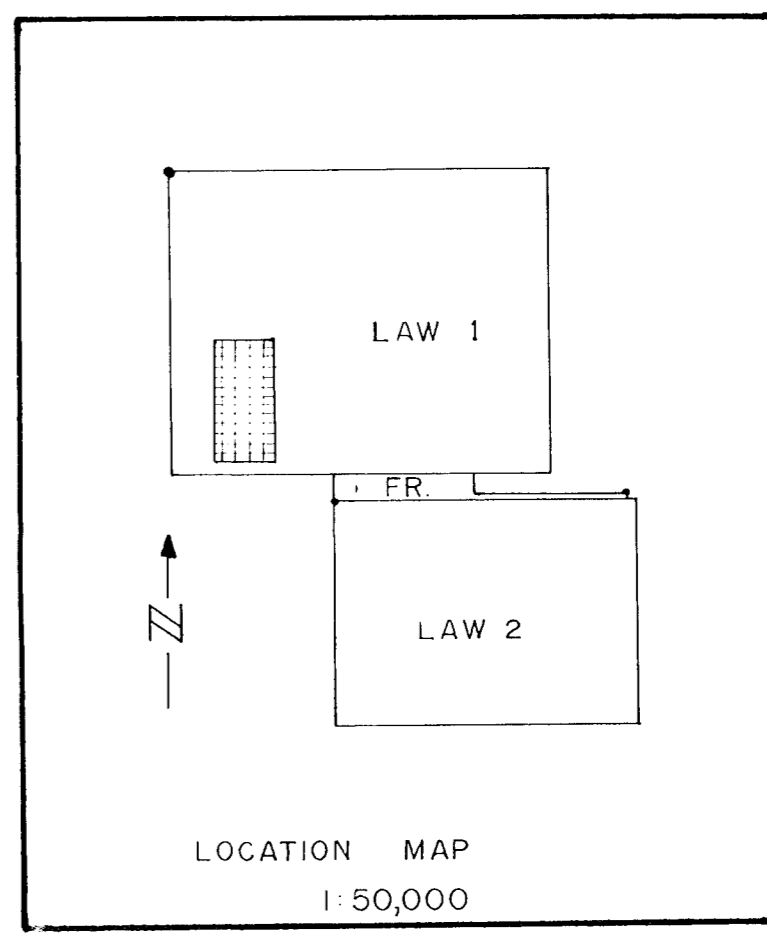
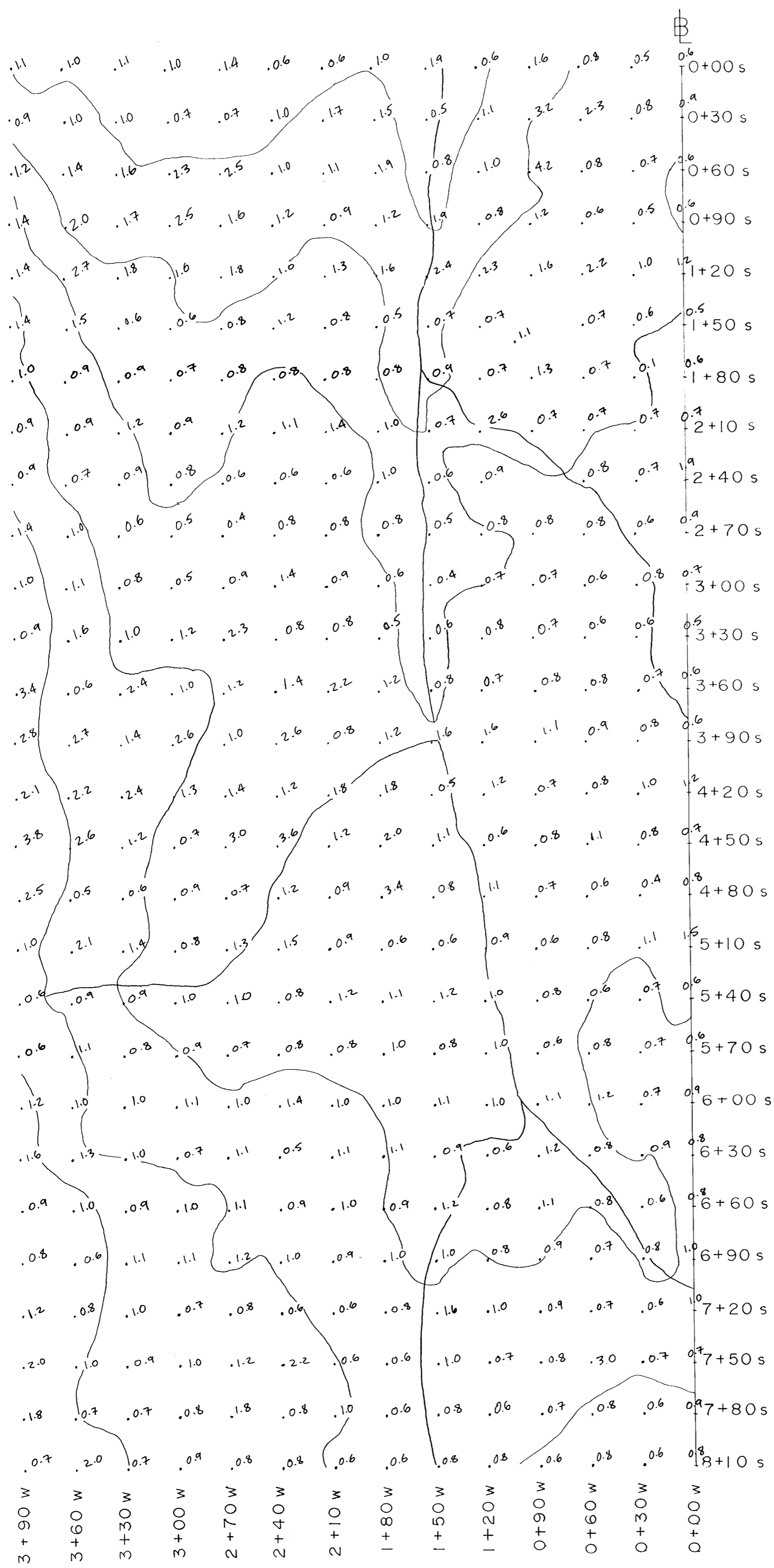
S.E.R.E.M. LTD.

PROJECT LAWYERS

TITLE LAW SOIL GRID B

DATE	SEPT 1980	DATA	J. CARNE	FIGURE
NTS.	94 E	DRAWN	MSC	
SCALE	1:2000	CHECKED		5

John Law



LEGEND

Ag in ppm
CONTOUR INTERVAL 10 m.

MINERAL RESOURCES BRANCH
8330
NO.

S.E.R.E.M. LTD.

PROJECT **LAWYERS**

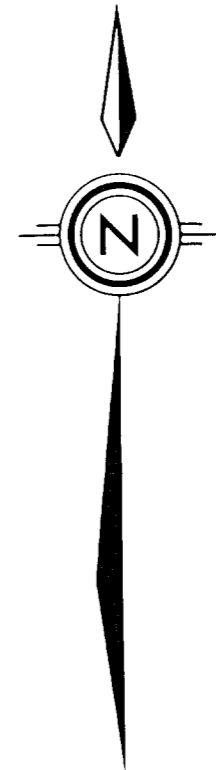
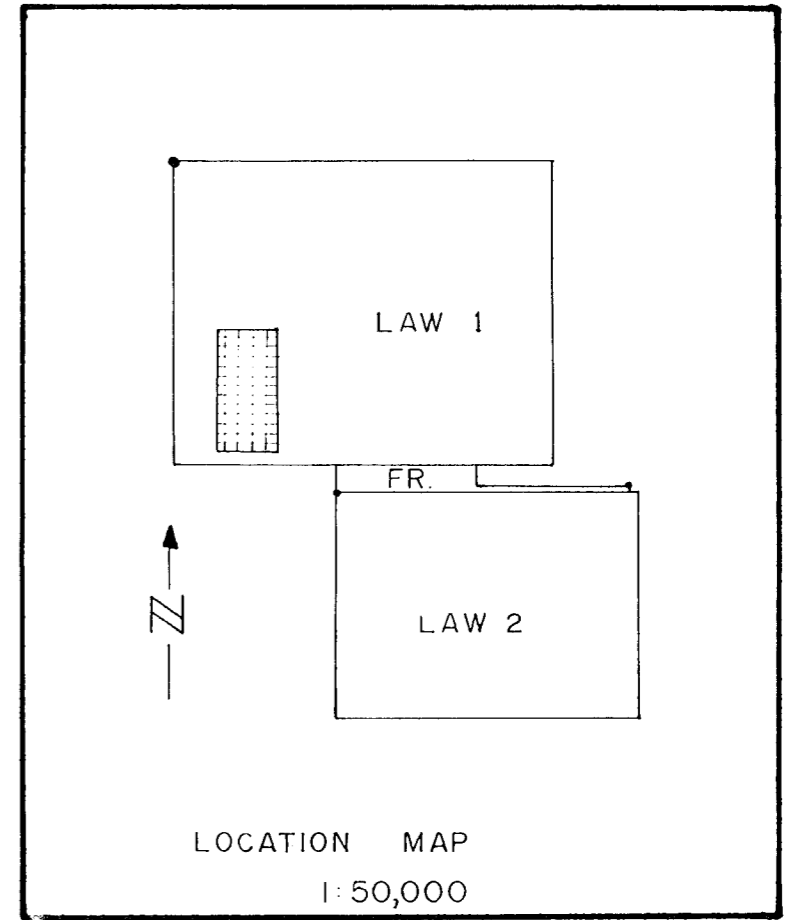
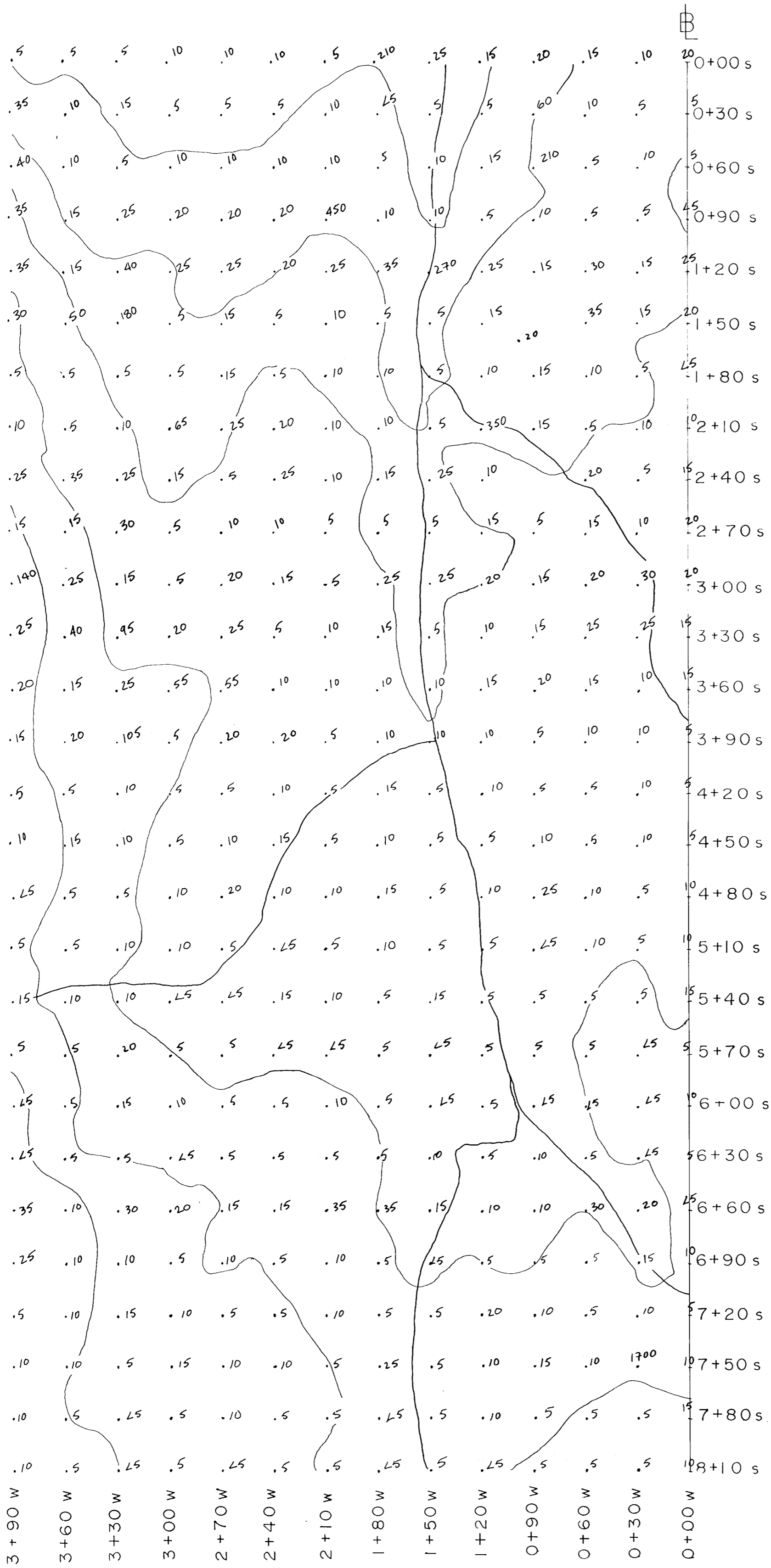
TITLE **LAW SOIL GRID B**

DATE	SEPT 1980	DATA	J. CARNE	FIGURE
NTS.	94 E	DRAWN	MSC	
SCALE	1:2000	CHECKED		

0 100 metres 200

6

Handwritten signature



LEGEND	
Au in ppb	
CONTOUR INTERVAL 10 m.	
MINERAL RESOURCES BRANCH ASSESSMENT REPORT	
8330	
S.E.R.E.M. LTD.	
PROJECT	LAWYERS
TITLE	LAW SOIL GRID B
DATE SEPT 1980	DATA J. CARNE
NTS. 94 E	DRAWN MSC
SCALE 1:2000	CHECKED
0 100 metres 200	
FIGURE	7

Handwritten signature or initials.