

ASSESSMENT REPORT

TYPE: DIAMOND DRILLING
CLAIMS: CAFB
MINING DIVISION: SKEENA
NTS LOCATION: 93E/6E
LATITUDE: 53°15'
LONGITUDE: 127°00'
OWNER: ASHFORK MINES LIMITED
OPERATOR: CRAIGMONT MINES LIMITED
AUTHOR: N.B. Vollo, P.Eng.
DATE: SEPT. 8th, 1980

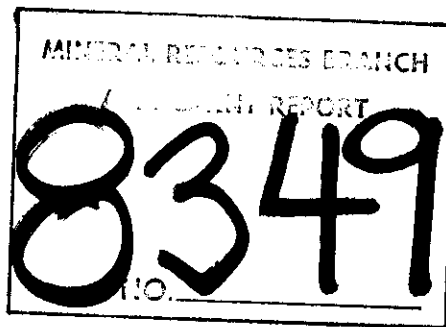


TABLE OF CONTENTS

Location and Access	1
Claims	1
History and Previous Work	1
Geology	1
Drill Program	1
Qualifications	1
Statement of Expenditures	2
Location Map	3

Drill log, hole	80-121
	80-122
	80-123
	80-124
	80-125
	80-128
	80-129
	80-130
	80-131

Drill Plan, 1:2500, in pocket.

LOCATION AND ACCESS

The CAFB Group is located on Little Redbird mountain, 160 km south of Smithers. It can be reached by road from Eutsuk Lake or by floatplane to Haven Lake.

CLAIMS

The property consists of 48 claims and fractions as follows:

CAFB 1 to 8,	record numbers	18083 - 90,	Skeena M.D.
CAFB 13 to 24,	" "	18093 -104,	" "
CAFB 47,49,	" "	18116, 118,	" "
CAFB 51 to 56,	" "	18120 -125,	" "
CAFB 67 to 72,	" "	18231 -236,	" "
CAFB 76,78,80,82 "	" "	18938,40,42,44	Omineca M.D.

HISTORY AND PREVIOUS WORK

The property was discovered by Phelps Dodge Corporation in the early 1960's. They completed more than 30,000 feet of diamond drilling, constructed an airstrip near Eutsuk Lake, approximately 10 miles of road to Haven Lake and extensive roads on Redbird Mountain. The property was optioned by Craigmont Mines Limited in 1979 and an additional 9000 m of diamond drilling was done that year and approximately 4000 m in 1980.

GEOLOGY

The property is a typical porphyry molybdenum deposit. Molybdenite and chalcopyrite mineralization occurs within and around the periphery of a small quartz monzonite stock of Tertiary age which intrudes intermediate to acid tuffs and breccias.

DRILL PROGRAM

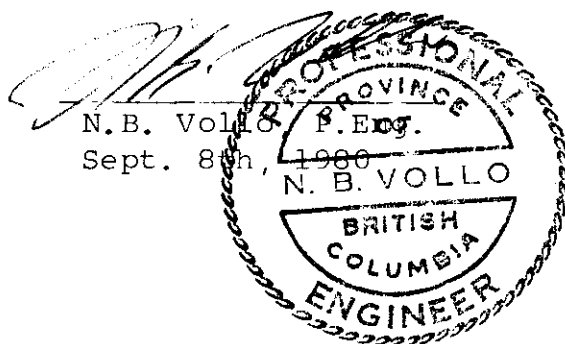
Approximately 2000 m of BQ diamond drilling was completed on the Southwest Zone, intersecting substantial widths of molybdenite mineralization of possible ore grade.

CORE STORAGE

Core is racked on site at Haven Lake.

QUALIFICATIONS

The core was logged by J.D. Murphy, P.Eng., under supervision of the author, and by the author.

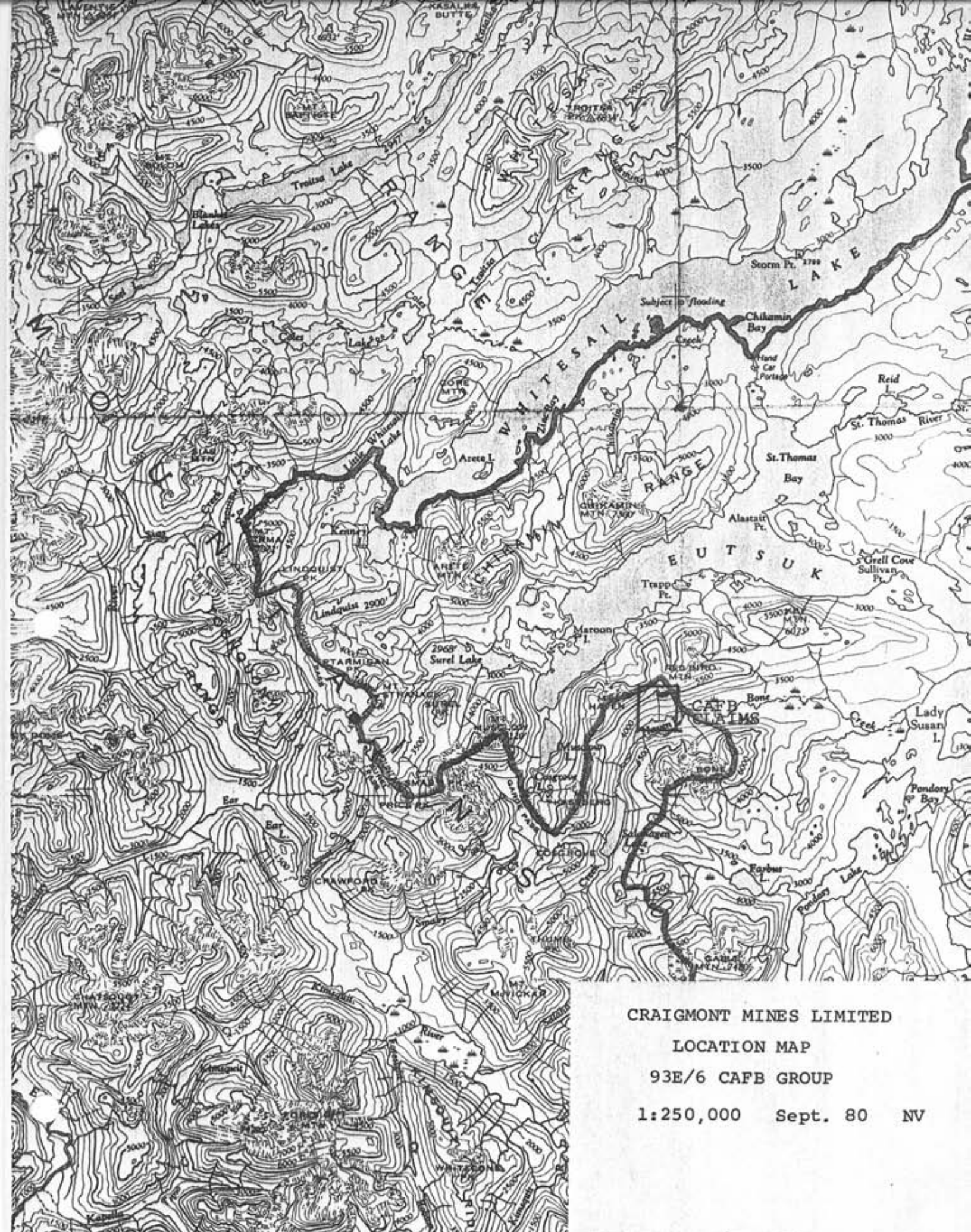


STATEMENT OF EXPENDITURES

Casing	54.98 m	at \$58.50/m	\$ 3,216.33
0 - 200 m	1529.72 m	at \$48.50/m	74,191.42
200-350 m	449.50 m	at \$53.50/m	24,048.25
350-450 m	71.50 m	at \$58.50/m	4,182.75
			<hr/> <hr/>
		Total	\$105,638.75

CONTRACTOR

H. Allen Diamond Drilling Ltd.
Box 1397,
MERRITT, B.C.



CRAIGMONT MINES LIMITED
LOCATION MAP
93E/6 CAFB GROUP
1:250,000 Sept. 80 NV

DIAMOND DRILL CORE LOG - SAMPLE RECORD

DEPTH	DIP	BEARING ANGLE
COLLAR	49° 40'	
100m	46'	
170m	51°	

PROPERTY 93E/6KB CLAIM HOLE NO. 80-121
 LATITUDE 96 90.9 STARTED 1980-06-26 CORE SIZE BQ
 DEPARTURE 9695.0 FINISHED 1980-06-29 SECTION 9700-N
 ELEVATION 1251.3 TOTAL LENGTH 170.6 m

LOGGED BY J.D. Murphy

DEPTH	DESCRIPTION	MINERALIZATION	SAMPLE	FROM	TO	m	MoS ₂ %	Cu%			
0.0	CASING: stick up 0.3m										
6.0	QUARTZ MONZONITE Ppy: rusty grey, m.g., uniform, 5 1/2 blocks, broken, blocky & oxidized w scald Melchite stain, scald glc to 5-10%, moderately argillie, several clay filled. Features parallel core & all contain fine MoS ₂ mixed with gouge mat'l, pink K alt'n common	broken	4320	6	10	4	0.01				
		broken	4321	10	15	5	0.02				
		ink MoS ₂	4322	15	20	5	0.04				
		"	4323	20	25	5	0.30				
		"	4324	25	30	5	0.24				
		fair MoS ₂	4325	30	35	5	0.31				
	43.0 - 54.8 - strongly argillie w. minor pink K alt'n	good MoS ₂	4326	35	40	5	0.20				
	54.8 - 59.0 - relatively unaltered	"	4327	40	45	5	0.34				
	59.0 - 65.1 strong K alt'n to 40% of rock	"	4328	45	50	5	0.24				
		"	4329	50	55	5	0.43				
		fair MoS ₂	4330	55	60	5	0.19				

DIAMOND DRILL CORE LOG -- SAMPLE RECORD

 PROPERTY 93E/GRB

 HOLE No. 80-121

 SHEET No. 2 of 4

DEPTH	DESCRIPTION	MINERALIZATION	SAMPLE	FROM	TO	m	MoS ₂ %	Cu %			
6.0	QTZ MONZONITE PPy (cont'd)										
		good MoS ₂	4331	60	65	5	0.19				
	65.8-90 cm fault zone w. abund clayey gouge, attitude appx. 45° to g/a.	fair MoS ₂	4332	65	70	5	0.25				
	66.7-157.3 moderate pinkish Kalk with only minor bands showing moderate to strong argillite alt'n, 3-5% qtz. slns. in MoS ₂	fair MoS ₂	4333	70	75	5	0.13				
		good MoS ₂	4334	75	80	5	0.24				
		good MoS ₂	4335	80	85	5	0.21				
		" "	4344	85	90	5	0.19				
		fair MoS ₂	4345	90	95	5	0.30				
		" "	4346	95	100	5	0.17				
		good MoS ₂	4347	100	105	5	0.21				
		fair MoS ₂	4348	105	110	5	0.12				
	114.4-40cm fault at 60 with abundant gouge to 30°	" "	4349	110	115	5	0.22				
		good MoS ₂	4350	115	120	5	0.21				
		fair MoS ₂	4351	120	125	5	0.12				

DIAMOND DRILL CORE LOG -- SAMPLE RECORD

 PROPERTY 93E/6RB

 HOLE No. 80-122

 SHEET No. 2 of 7

DEPTH	DESCRIPTION	MINERALIZATION	SAMPLE	FROM	TO	m	MoS ₂ %	Cu %			
48.5	QZ. MONZONITE Ppy: similar to previously described α , occ. Tuff inclusions to 40 cm,										
66.2	sharp graphitic slip w. 50 w. 1-2 cm qtz-MoS ₂ str. along h wall,										
68.0	below this depth oxidation is negligible, confined to occasional fracture,										
74.3	10 cm. fragmental clayey fault										
78.3	4 cm clayey fault w. 40,										
87.2	40 cm Feldspar Ppy dike, dark grey, poorly defined incipient plerios, QMP frags along lower det., attitude est. d. 40°,										
92.5 - 94.5	several fractures with coating of MoS ₂	u. wk MoS ₂	4370	95	100	5	0.07				
98.9	Tuff: dark grey, strongly fractured & clayey with stockwork of abundant qtz. str. to 20 cm - mostly < 10 cm, 15-20% qtz, u. wk MoS ₂ ,	u. wk MoS ₂	4371	100	105	5	0.27				
	strongly silicified w. approx 30%	u. wk MoS ₂	4372	105	110	5	0.11				
113.1		u. wk MoS ₂	4373	110	115	5	0.11				

DIAMOND DRILL CORE LOG -- SAMPLE RECORD

 PROPERTY 93E/6RB

 HOLE No. 80-122

 SHEET No. 4 of 7

DEPTH	DESCRIPTION	MINERALIZATION	SAMPLE	FROM	TO	m	MoS ₂ %	Cu%			
114.1	TUFF: (cont'd)										
	143.7- 5 cm. gouge @ 75-80,	u. wk MoS ₂	4380	145	150	5	0.06				
153.7	QUARTZ MONZONITE Ppy: light grey to pinkish grey, m.g., moderately argillaceous 5-10% qtz. str. to 1 cm. mainly @ 40 & 60°, scold MoS ₂ w qtz,	u. wk MoS ₂	4381	150	155	5	0.14				
		wk MoS ₂	4382	155	160	5	0.10				
161.0	TUFF: dark grey, f.g., uniform, partly stnd. & faulted, 5-7% qtz. str. to 4 cm. @ 35° mainly, nearly barren of MoS ₂ ,										
	162.1-164.1- soft & argillaceous, moderately sharv banded @ 25)	wk MoS ₂	4383	160	165	5	0.18				
	164.1- 4 cm. clayey fault @ 55,	u. wk MoS ₂	4384	165	170	5	0.15				
	163.5- 4 cm. " " @ 55, bln. ckt. sharp @ 35										
163.5	Qtz MONZONITE Ppy: light pinkish grey, m.g., 5-10% biotite, wkly argillaceous, fairly uniform, 5-10% qtz. str. to 3 cm. mainly @ 50, few @ 35-76	Fair MoS ₂	4385	170	175	5	0.18				

DIAMOND DRILL CORE LOG -- SAMPLE RECORD

 PROPERTY 33E/WKP

 HOLE No. 80-122

 SHEET No. 5 of 7

DEPTH	DESCRIPTION	MINERALIZATION	SAMPLE	FROM	TO	m	MoS ₂ %	Cu %			
169.5	Qtz Monzonite Ppy: (cont'd)										
	20cm Tuff inclusion at end of section,										
		u. wk MoS ₂	4386	175	180	5	0.08				
180.5	Albite: light grey to pinkish grey, f.g., strongly fractured or cracked	fair MoS ₂	4387	180	185	5	0.22				
	appearance a sheet through with abund qtz. str. to 10-15%, significant associated MoS ₂ , strongly argill. in part. minor K alt'n,	wk MoS ₂	4388	185	190	5	0.18				
187.3	TUFF: dark grey, typical										
188.1	Qtz Monzonite Ppy: pinkish grey, m.g. biotite, uniform, fresh, 4-5% qtz, u. minor MoS ₂ ,										
		u. wk MoS ₂	4389	190	195	5	0.16				
194.9	TUFF: black, f.g. hard & siliceous, scat'd irreg. qtz str. more abundant near lower part, top ctct. at 35, bot. ctct at 55,										
197.4	QUARTZ MONZONITE PORPHYRY: pinkish grey, m.g., moderate K alt'n, minor argill. bands, scat'd qtz w MoS ₂ , bot. ctct at 50	wk MoS ₂	4390	195	200	5	0.08				

DIAMOND DRILL CORE LOG - SAMPLE RECORD

DEPTH	D.	BEARING	INT.
COLLAR	50'00"		
100m	-50°		
196m	-50°		

PROPERTY 25E/6RB CLAIM HOLE NO. 80-123
 LATITUDE 9790 9 STARTED 1980-07-02 CORE SIZE 80
 DEPARTURE 9704 9 FINISHED 1980-07-08 SECTION 9800-N
 ELEVATION 1273.6 TOTAL LENGTH 196.6 m

LOGGED BY J.D. Murphy

DEPTH	DESCRIPTION	MINERALIZATION	SAMPLE	FROM	TO	m	MoS ₂ %	Cu%				
0.0	CASING: stick up 0.5m.											
6.3	APLITE: pinkish gray, f.g., fractured & shot through w. qtz. str. to 3cm carrying good MoS ₂ , 6.3-11.5 - moderately oxidised w. abundant rust stain. scattered Molechite,	barren good MoS ₂ Fair MoS ₂ wk MoS ₂	4396 4397 4398 4399	6.3 10 15 20	10.0 15 20 25	37 5 5 5	0.07 0.55 0.21 0.08					
		Fair MoS ₂	4400	25	30	5	0.13					
		Fair MoS ₂	4401	30	35	5	0.07					
36.6	FELDSPAR PORPHYRY DIKE: dark gray to buff w. 10-15% mg. white feldspar w. ecc. subhedral qtz, clefs sharp @ 55°, carries 1-2% finely dissem. Py, no MoS ₂ noted 54.5 - 3cm clayey gouge at high angle to core.	Fair MoS ₂	4402	35	40	5	0.08					
37.7	APLITE: as described above	Fair MoS ₂	4403	40	45	5	0.18					

DIAMOND DRILL CORE LOG -- SAMPLE RECORD

 PROPERTY 93E/URB

 HOLE No. 80-123

 SHEET No. 2 of 5

DEPTH	DESCRIPTION	MINERALIZATION	SAMPLE	FROM	TO	m	MoS ₂ %	Cu%				
37.7	APLITE (cont'd)	Fair MoS ₂	4404	45	50	5	0.23					
		Fair MoS ₂	4405	50	55	5	0.15					
		Wk MoS ₂	4406	55	60	5	0.08					
58.4	TUFF: dark grey, mainly f.g. w. bed'd m.g. to c.g. frags, top ct sharp w 20,											
60.1	APLITE: as described above,	Fair MoS ₂	4407	60	65	5	0.24					
		Wk MoS ₂	4408	65	70	5	0.09					
75.5	90% highly sulf'd QMP, clks w 35,	Fair MoS ₂	4418	70	75	5	0.17					
83.2	70% unsoft'd Tuff, sharp w 25% grey gran.	Wk MoS ₂	4412	75	80	5	0.07					
		"	4420	80	85	5	0.08					
		"	4421	85	90	5	0.06					
		Fair MoS ₂	4422	90	95	5	0.09					
		Wk MoS ₂	4423	95	100	5	0.05					

DIAMOND DRILL CORE LOG -- SAMPLE RECORD

 PROPERTY 93E/GRB

 HOLE No. 80-123

 SHEET No. 3 of 5

DEPTH	DESCRIPTION	MINERALIZATION	SAMPLE	FROM	TO	m	MoS ₂ %	Cu%				
60.1	APLITE (cont'd)											
101.4	90 cm test core, no recovery, mud seen reported, sharp graphitic slip at 32° w fault gouge & fragments at start of test section,	wk MoS ₂	4424	100	105	5	0.12					
		wk MoS ₂	4425	105	110	5	0.06					
		wk MoS ₂	4426	110	115	5	0.06					
		wk MoS ₂	4427	115	120	5	0.06					
122.6	60 cm. QMP, top dit blocky, irregular, ltm et al w 25, contains Aplite frags, strongly argillic, minor MoS ₂	fair MoS ₂	4428	120	125	5	0.14					
124.6	QUARTZ MOWICHITE PORPHYRY: pinkish gray, mainly n.g. porphyritic w. scald, nice glx eyes, wk argillie & Kalkin, 2-9% glx str w. MoS ₂ , top dit slip w ls,	wk MoS ₂	4429	125	130	5	0.07					
		wk MoS ₂	4430	130	135	5	0.03					
		wk MoS ₂	4431	135	140	5	0.08					
		wk MoS ₂	4432	140	145	5	0.07					
		wk MoS ₂	4433	145	150	5	0.07					
		wk MoS ₂	4434	150	155	5	0.06					
160.5		wk MoS ₂	4435	155	160	5	0.04					

DIAMOND DRILL CORE LOG -- SAMPLE RECORD

 PROPERTY 935/URU

 HOLE No. 60-124

 SHEET No. 2 of 9

DEPTH	DESCRIPTION	MINERALIZATION	SAMPLE	FROM	TO	m	MoS ₂ %	Cu %c				
7.7	OTZ - MONZONITE PPY (cont'd)											
90.5	good MoS ₂ coating slip surface on 20,											
92.7	4 cm. shearal frags w. gouge filled interstices w 20-60 Pyrite along both adjacent walls											
121.6 - 132.0	strong argillie alt'n w 5-7% Qtz. & significant MoS ₂ , str predominantly w 20-30, occasionally to 50°	u. wk MoS ₂	4436	120	125	5	0.09					
		wk MoS ₂	4437	125	130	5	0.09					
132.0 - 156.7	pinkish gray w. ft. w. K. alt'n and med. to strong argillie alt'n.	fair MoS ₂	4438	130	135	5	0.15					
		wk MoS ₂	4439	135	140	5	0.07					
156.7 - 212.7	strong argillie alt'n w. wk K alt'n	wk MoS ₂	4440	140	145	5	0.08					
		wk MoS ₂	4441	145	150	5	0.10					
		wk MoS ₂	4442	150	155	5	0.10					
		wk MoS ₂	4443	155	160	5	0.12					
165.2 - 75 cm	fault zone w. w. 20 w. abrad rock frags. & gouge	wk MoS ₂	4444	160	165	5	0.19					

DIAMOND DRILL CORE LOG -- SAMPLE RECORD

 PROPERTY 92E/LRB

 HOLE No. 80-124

 SHEET No. 5 of 9

DEPTH	DESCRIPTION	MINERALIZATION	SAMPLE	FROM	TO	m	MoS ₂ %	Cu %				
245.0	PINK SILICIFIED ZONE: pinkish grey, v. f.g., crinkled appearance, probably QMP almost completely replaced by silica, carries scald qtz w MoS ₂ , bttn. ctct. w 35.	wk MoS ₂	4461	245	250	5	0.17					
		Fair MoS ₂	4462	250	255	5	0.31					
249.1	QUARTZ MONZONITE PPy: medium grey, mg. to i.g. porphyritic, 5-10% biotite, fresh, numerous str. w MoS ₂ , bttn. ctct. w 40-45.											
251.2	PINK SILICIFIED ZONE: as previously described. 252.0 - 60 cm. QMP w. fair MoS ₂ .											
255.1	QUARTZ MONZONITE PPy: med. grey, to pinkish grey, mg. porphyritic, 5-10% biotite, 3-5% qtz. str. w appreciable MoS ₂ , wk argill. & K alb., bttn ctct sharp w 40	Fair MoS ₂	4463	255	260	5	0.36					
		"	4464	260	265	5	0.30					
		"	4465	265	270	5	0.27					
270.3	TUFF: dark grey, f.g., massive w. 5-10% qtz str. & pink feldspathic bands, scald MoS ₂ , strongly argillaceous in part	wk MoS ₂	4466	270	275	5	0.27					

DIAMOND DRILL CORE LOG -- SAMPLE RECORD

 PROPERTY 93E/6KB

 HOLE No. 80-124

 SHEET No. 7 of 9

DEPTH	DESCRIPTION	MINERALIZATION	SAMPLE	FROM	TO	m	MoS ₂ %	Cu %			
299.5	APLITE (cont'd)										
	pinkish buff rock, fine grained, crackled appearance, mottled, 3-5% glc. str. mainly @ 35° 15°, strong K spot alk	wk MoS ₂	4495	300	305	5	0.11				
	304.9 - 10 cm dark gray Feldspar Ppy dike @ 35°	fair MoS ₂	4496	305	310	5	0.14				
	305.8 - 20 cm Feldspar Ppy @ above, irregular clets.	fair MoS ₂	4497	310	315	5	0.15				
315.8	QTZ MONZONITE Ppy medium pinkish gray, m.g., uniform, 10% biotite, fresh appearance, minor glc-MoS ₂ str, sectors end with 10 cm Tuff band @ 30° 50°										
318.1	APLITE: as previously described, contains 30-40% QMP	wk MoS ₂	4498	315	320	5	0.17				
	bands to 50 cm interlingering with aplite, scald glc-MoS ₂ str,	wk MoS ₂	4499	320	325	5	0.11				
324.4	TUFF: dark gray to black, fig to - wkly agglomeratic w. scald case to m.g. frags, scald glc-MoS ₂ str & pink K felds bands to 2 cm, fairly dissem Py & Cpy to 5% minor threads dark red min. present,	wk MoS ₂	4500	325	330	5	0.10				

DIAMOND DRILL CORE LOG - SAMPLE RECORD

DEPTH	DIP	BEARING ANI.
COLLAR	30°	
100m		

PROPERTY 93E/6RB CLAIM
 HOLE NO. 80-125
 LATITUDE 9790.8 STARTED 1980-07-09 CORE SIZE 80
 DEPARTURE 9703-3 FINISHED 1980-07-13 SECTION 9800-N
 ELEVATION 1273.5 TOTAL LENGTH 140.0m
 LOGGED BY J.P. Murphy

DEPTH	DESCRIPTION	MINERALIZATION	SAMPLE	FROM	TO	m	MoS ₂ %	Cu %			
0.0	CASING: stick up 0.5m										
5.4	APLITE: pink, f.g., massive, barren, cut by 3-4% Qtz str w. no associated MoS ₂ , except wk near lower dike contact @ 23.0m. 18.6-40cm Feldspar Ppy dike, dark grey, predominantly ang. w. occ. c.g., grey & pink felds, plume, wk disseminated Ppy, contacts indistinct										
23.0	FELDSPAR PORPHYRY DIKE: appears identical to material described above @ 18.6m, top clet @ 60, btm @ 40, lighter grey to buff alt'n near clets.										
25.1	APLITE: grey buff to creamy, strongly fractured or cracked appearance, shot through w. numerous Qtz & Qtz-MoS ₂ str, to 1cm, some MoS ₂ only fractures,	wk Al ₂ S ₂	4467	25	30	5	0.08				
	43.5-2m clayey fault @ 53-60	wk Al ₂ S ₂	4468	30	35	5	0.09				
		"	4469	35	40	5	0.12				
		wk Al ₂ S ₂	4470	40	45	5	0.09				

DIAMOND DRILL CORE LOG -- SAMPLE RECORD

 PROPERTY 33E/6RB

 HOLE No. 80-128

 SHEET No. 3 of 7

DEPTH	DESCRIPTION	MINERALIZATION	SAMPLE	FROM	TO	m	MoS ₂ %	Cu %			
4.5	QTZ MONZONITE PPT: (cont'd)										
	178.0 - 20 cm clayey, broken Fault zone, attitude indefinite										
	190.0 - 195.5 moderate to strong argillie alt. w. wk to moderate K spar, scud'd qtz-MoS ₂ slns										
	195.0 - 10 cm broken zone w clayey slip w 40										
	207.1 - 25 cm dark gray Feldspar Ppy dike, top ckt @ 35, btm w 65.										
210.2	FELDSPAR PPT DIKE: dark gray, m-g. to c-g pink & grey phenos in f.g. dark matrix, contains irreg frags. QHP, dissem. Py throughout w. occ. Cpy along fractures, ckt @ 40 app.	wk MoS ₂	4709	210	215	5	0.04				
211.2	QTZ MONZONITE PPT: similar to section previously described, qtz slightly more abund & MoS ₂ significant, pinkish gray w moderate to strong K sp & generally w argillie alt.	wk MoS ₂	4710	215	220	5	0.07				

DIAMOND DRILL CORE LOG -- SAMPLE RECORD

 PROPERTY 93E/6RB

 HOLE No. 80-128

 SHEET No. 4 of 7

DEPTH	DESCRIPTION	MINERALIZATION	SAMPLE	FROM	TO	m	MoS ₂ %	Cu %				
211.2	Qtz MONZONITE PPy (cont'd)	v. wk. MoS ₂	4711	220	225	5	0.03					
225.2	30 cm containing several clear gypsum infillings to 2 cm filling dense fractures,	"	4712	225	230	5	0.08					
		wk MoS ₂	4713	230	235	5	0.05					
241.1	FELDSPAR PORPHYRY: dark grey w light grey scald m.g. to c.g. phenos, minor v. f.g. dissem Pp, acc. Cpy along fractures & linear threadlike strcs, no free qtz eyes noted, clefs knife sharp @ 35-40.	"	4714	235	240	5	0.09					
		v. wk MoS ₂	4715	240	245	5	0.04					
242.1	Qtz MONZONITE PPy: medium pinkish grey similar to previous section, v. fresh appearance, v. low qtz str content to 1-2%, scald MoS ₂ w qtz to 2cm @ 30	v. wk MoS ₂	4716	245	250	5	0.05					
		wk MoS ₂	4717	250	255	5	0.04					
257.6	263.4 wk to strong argillie band, qtz. MoS ₂ strcs more abundant to 4-5%	fair MoS ₂	4718	255	260	5	0.13					
		"	4719	260	265	5	0.18					
		"	4720	265	270	5	0.11					

DIAMOND DRILL CORE LOG -- SAMPLE RECORD

 PROPERTY 93E/LPB

 HOLE No. 80-129

 SHEET No. 5 of 7

DEPTH	DESCRIPTION	MINERALIZATION	SAMPLE	FROM	TO	m	MoS ₂ %	Cu %			
242.1	QTZ MONZONITE FRY (cont'd)										
269.8 - 284.5	mod. to strong argill. alt. w moderate K alt. except as noted. numerous Qtz-MoS ₂ alt. to 5%	good MoS ₂	4721	270	275	5	0.15				
272.2 - 280.3	strong K alt. giving rock pinkish cast, alt. 20% K sp. as irreg. patches & beds to 5 cm, relatively wt MoS ₂	fair MoS ₂	4722	275	280	5	0.05				
287.9 - 290.3	2 cm gypsum. Qtz str w 20 w good MoS ₂	wk MoS ₂	4723	280	285	5	0.05				
301.5 - 308.9	20 cm grey Qtz un. w 20-30 w 20 cm strongly argill. QMP, MoS ₂ near alt. 40 cm strongly argill. QMP in f. wall,	good MoS ₂	4724	285	290	5	0.10				
308.9 - 311.5	50 cm Qtz w 30 w good MoS ₂	fair MoS ₂	4725	290	295	5	0.15				
311.5 - 315.0	mod. grey strongly alt. sericite with w. several beds pinkish grey K alt. & argill. normal QMP, sericite mat. contains significant P ₂ & MoS ₂	fair MoS ₂	4726	295	300	5	0.12				
315.0 - 318.0	mod. grey strongly alt. sericite with w. several beds pinkish grey K alt. & argill. normal QMP, sericite mat. contains significant P ₂ & MoS ₂	5-10% P ₂ , fair MoS ₂	4727	300	305	5	0.06				
318.0 - 320.0	mod. grey strongly alt. sericite with w. several beds pinkish grey K alt. & argill. normal QMP, sericite mat. contains significant P ₂ & MoS ₂	fair MoS ₂	4728	305	310	5	0.25				
320.0 - 322.0	mod. grey strongly alt. sericite with w. several beds pinkish grey K alt. & argill. normal QMP, sericite mat. contains significant P ₂ & MoS ₂	fair MoS ₂	4729	310	315	5	0.10				
322.0 - 324.0	mod. grey strongly alt. sericite with w. several beds pinkish grey K alt. & argill. normal QMP, sericite mat. contains significant P ₂ & MoS ₂	fair MoS ₂	4730	315	320	5	0.08				

DIAMOND DRILL CORE LOG -- SAMPLE RECORD

 PROPERTY 93E/6RB

 HOLE No. 80-128

 SHEET No. 6 of 7

DEPTH	DESCRIPTION	MINERALIZATION	SAMPLE	FROM	TO	m	MoS ₂ %	Cu %			
242.1	QTZ MONZONITE Ppt; cont'd										
314.8 - 326.9	2 cm clayey fault w pinkish white strongly argillie w moderate K alt'n.	fair MoS ₂	4731	320	325	5	0.09				
		"	4732	325	330	5	0.09				
		good MoS ₂	4733	330	335	5	0.19				
		fair MoS ₂	4734	335	340	5	0.12				
		wk MoS ₂	4735	340	345	5	0.06				
		v. wk MoS ₂	4736	345	350	5	0.08				
		"	4737	350	355	5	0.06				
356.7 - 362.8	pinkish white strongly argillie w wk K alt'n slightly better MoS ₂	wk. MoS ₂	4738	355	360	5	0.09				
		"	4739	360	365	5	0.08				
362.8 - 374.9	buff to pinkish white strongly argillie, minor MoS ₂	v. wk MoS ₂	4740	365	370	5	0.05				
		"	4741	370	375	5	0.04				
		wk MoS ₂	4742	375	380	5	0.07				
		fair MoS ₂	4743	380	385	5	0.12				

DIAMOND DRILL CORE LOG - SAMPLE RECORD

DEPTH	LP	BEARING AST.
COLLAR	52°	WEST
100m	52 1/2°	

PROPERTY SSE/LRB CLAIM HOLE NO. 80-122
 LATITUDE 9591.9 STARTED 1980-07-28 CORE SIZE 1.0
 DEPARTURE 9764.5 FINISHED 1980-07-30 SECTION 9600-1
 ELEVATION 1217.0 TOTAL LENGTH 134.0m
 LOGGED BY J.D. Murphy

DEPTH	DESCRIPTION	MINERALIZATION	SAMPLE	FROM	TO	m	MoS ₂ %	Cu%			
0.0	CASING: slick up 0.6m.										
4.2	Quartz Monzonite Ppy, f.g. aplite sections a dark green to purple volcanic flows, apparently overburden 8.3-10.0 - lost core										
10.0	APLITE: buff, f.g. cracked appearance w. fine threadlike network of linear qtz. str., abundance of black secondary mineral (Tennite?) a minor Phoskrite on fracture surfaces, minor iron oxides, little or no Pyrite, minor MoS ₂ starting @ 16.5 m approx.	u. wk MoS ₂	4746	15	20	5	003				
		wk MoS ₂	4747	20	25	5	007				
		"	4748	25	30	5	008				
		"	4749	30	35	5	006				
		Fair MoS ₂	4750	35	40	5	007				
44.0	TUFF: dark grey, f.g. agglomerate in part in sand to abundant mg. to c.g. frags, cut by network of qtz. MoS ₂ str. to 1cm forming 5-6% of rock	wk MoS ₂	4751	40	45	5	007				
		Fair MoS ₂	4752	45	50	5	012				

DIAMOND DRILL CORE LOG -- SAMPLE RECORD

 PROPERTY 93E/URB

 HOLE No. 80-122

 SHEET No. 2 of 3

DEPTH	DESCRIPTION	MINERALIZATION	SAMPLE	FROM	TO	m	MoS ₂ %	Cu %				
44.0	TUFF: (cont'd). ool. thread or patch Cr ₂	wk MoS ₂	4753	50	55	5	0.07					
56.5-60.5	argillie w abund kaolinised frags & appreciable carb. as discrete strcs & threads, minor MoS ₂	"	4754	55	60	5	0.06					
		u. wk MoS ₂	4755	60	65	5	0.06					
		"	4756	65	70	5	0.10					
		wk MoS ₂	4757	70	75	5	0.07					
73.0	APLITE: buff. lg, cracked appearance as described previously, final 2.5m darker grey, apparently due to incomplete replacement of Tuff.	"	4758	75	80	5	0.08					
		fair MoS ₂	4759	80	85	5	0.12					
		"	4760	85	90	5	0.08					
		wk MoS ₂	4761	90	95	5	0.05					
99.0	TUFF: dark grey, agglomeratic in pdit w 10-15% m.g. to c.g. pink & grey frags, mainly f.g. massive, fairly uniform, wk dissem Py & lesser Cr ₂ , 2-3% glc. strcs to 1cm. w some associated MoS ₂	"	4762	95	100	5	0.07					
		"	4763	100	105	5	0.07					
		"	4764	105	110	5	0.08					
		"	4765	110	115	5	0.10					
108.1	2cm gouge @ 20	"	4766	115	120	5	0.13					

DIAMOND DRILL CORE LOG -- SAMPLE RECORD

 PROPERTY 33E/6RB

 HOLE No. 80-128

 SHEET No. 3 of 7

DEPTH	DESCRIPTION	MINERALIZATION	SAMPLE	FROM	TO	m	MoS ₂ %	Cu %			
4.5	QTZ MONZONITE Ppy: (cont'd)										
	178.0 - 20 cm clayey, broken Fout zone, attitude indefinite										
	190.0 - 195.5 moderate to strong argillie alt'n w wk to moderate K spar, scat'd qtz-MoS ₂ slns										
	195.0 - 10 cm broken zone w clayey slip @ 40.										
	207.1 - 25 cm dark gray Feldspar Ppy dike, top ckt @ 35, btm @ 65.										
210.2	FELDSPAR Ppy DIKE: dark gray, m.g. to c.g. pink & grey phenos. in f.g. dark matrix, contains irreg frags. QHP, dissem. Py throughout w. occ. Cpy along fractures, ckt @ 40 app.	r. wk MoS ₂	4709	210	215	5	0.04				
211.2	QTZ MONZONITE Ppy: similar to section previously described, qtz slightly more abund. & MoS ₂ significant, pinkish gray w moderate to strong K alt'n & generally wk argillie alt'n	wk MoS ₂	4710	215	220	5	0.07				

DIAMOND DRILL CORE LOG -- SAMPLE RECORD

 PROPERTY 93E/6RB

 HOLE No. 80-128

 SHEET No. 4 of 7

DEPTH	DESCRIPTION	MINERALIZATION	SAMPLE	FROM	TO	m	MoS ₂ %	Cu %				
211.2	Qtz MONZONITE Ppy (cont'd)	v. wk. MoS ₂	4711	220	225	5	0.03					
225.2	30 cm containing several clear gypsum infillings to 2 cm. filling clepsy fractures,	"	4712	225	230	5	0.08					
		wk MoS ₂	4713	230	235	5	0.05					
241.1	FELDSPAR PORPHYRY: dark grey w light grey	"	4714	235	240	5	0.09					
	scat'd m.g.-to c.g. phenos, minor v. f.g. dissem Ppy, all Cpy along fractures & linear threadlike str., no free qtz eyes noted, clefs knife sharp w 35-40,	v. wk MoS ₂	4715	240	245	5	0.04					
242.1	Qtz MONZONITE Ppy: medium pinkish grey	v. wk MoS ₂	4716	245	250	5	0.05					
	similar to previous section, v. fresh appearance, v. low qtz str content to 1-2%, scat'd MoS ₂ w qtz. to 2cm w 30	wk MoS ₂	4717	250	255	5	0.04					
257.6	263.4 wk to strong argillic band, qtz. MoS ₂ str	fair MoS ₂	4718	255	260	5	0.13					
	more abundant to 4-5%	"	4719	260	265	5	0.18					
		"	4720	265	270	5	0.11					

DIAMOND DRILL CORE LOG -- SAMPLE RECORD

 PROPERTY 93E/LPB

 HOLE No. 80-128

 SHEET No. 5 of 7

DEPTH	DESCRIPTION	MINERALIZATION	SAMPLE	FROM	TO	m	MoS ₂ %	Cu %c				
242.1	QTZ MONZONITE Py (cont'd)											
269.8 - 284.5	mod. to strong argill. alt'n w moderate K alt'n except as noted. numerous qtz-MoS ₂ str. to 5%	good MoS ₂	4721	270	275	5	0.15					
277.2 - 280.3	strong K alt'n giving rock pinkish cast, abnd 20% K spor as irreg patches & beds to 5cm, relatively wk MoS ₂	fair MoS ₂	4722	275	280	5	0.05					
287.9 - 290.3	2cm gypsum. qtz str w 20 w good MoS ₂	wk MoS ₂	4723	280	285	5	0.05					
301.5 - 308.9	20-30 w 20cm strongly argill. QMP, MoS ₂ near str, 10 cm strongly argill. QMP in f. wall,	good MoS ₂	4724	285	290	5	0.10					
308.9 - 311.5	50 cm qtz w 30 w good MoS ₂	fair MoS ₂	4725	290	295	5	0.15					
311.5 - 315.0	mod. grey strongly alt'd sericite schist w several beds pinkish grey K alt'd argill. normal QMP, sericite mat'l contains significant Py & MoS ₂	fair MoS ₂	4726	295	300	5	0.12					
315.0 - 318.0	mod. grey strongly alt'd sericite schist w several beds pinkish grey K alt'd argill. normal QMP, sericite mat'l contains significant Py & MoS ₂	5-10% Py, fair MoS ₂	4727	300	305	5	0.06					
318.0 - 320.0	mod. grey strongly alt'd sericite schist w several beds pinkish grey K alt'd argill. normal QMP, sericite mat'l contains significant Py & MoS ₂	fair MoS ₂	4728	305	310	5	0.25					
320.0 - 322.0	mod. grey strongly alt'd sericite schist w several beds pinkish grey K alt'd argill. normal QMP, sericite mat'l contains significant Py & MoS ₂	5-10% Py, fair MoS ₂	4729	310	315	5	0.10					
322.0 - 324.0	mod. grey strongly alt'd sericite schist w several beds pinkish grey K alt'd argill. normal QMP, sericite mat'l contains significant Py & MoS ₂	fair MoS ₂	4730	315	320	5	0.08					

DIAMOND DRILL CORE LOG - SAMPLE RECORD

 PROPERTY 93E/6RB

 HOLE No. 80-128

 SHEET No. 6 of 7

DEPTH	DESCRIPTION	MINERALIZATION	SAMPLE	FROM	TO	m	MoS ₂ %	Cu %			
242.1	QTZ MONZONITE Ppt: cont'd										
314.8 - 326.9	2 cm clayey fault w 20 pinkish white strongly argillie w moderate K alt'n.	fair MoS ₂	4731	320	325	5	0.09				
		"	4732	325	330	5	0.09				
		good MoS ₂	4733	330	335	5	0.19				
		fair MoS ₂	4734	335	340	5	0.12				
		wk MoS ₂	4735	340	345	5	0.06				
		u. wk MoS ₂	4736	345	350	5	0.08				
		"	4737	350	355	5	0.06				
356.7 - 369.8	360.5 - pinkish white strongly argillie w wk K alt'n slightly better MoS ₂	wk. MoS ₂	4738	355	360	5	0.09				
		"	4739	360	365	5	0.08				
369.8 - 374.9	buff to pinkish white strongly argillie, minor MoS ₂	u. wk MoS ₂	4740	365	370	5	0.05				
		"	4741	370	375	5	0.04				
		wk MoS ₂	4742	375	380	5	0.07				
		fair MoS ₂	4743	380	385	5	0.12				

DIAMOND DRILL CORE LOG - SAMPLE RECORD

DEPTH	L.P.	BEARING AST.
COLLAR	52°	WEST
100m	52 1/2°	

PROPERTY 93E/LRB CLAIM HOLE NO. 80-122
 LATITUDE 9591.9 STARTED 1980-07-28 CORE SIZE 1.0
 DEPARTURE 9764.5 FINISHED 1980-07-30 SECTION 9600-21
 ELEVATION 1217.0 TOTAL LENGTH 134.0m
 LOGGED BY J.D. Murphy

DEPTH	DESCRIPTION	MINERALIZATION	SAMPLE	FROM	TO	m	MoS ₂ %	Cu %c			
0.0	CASING: slick up 0.6m.										
4.2	Quartz Monzonite Ppy, f.g. aplite sections & dark green to purple volcanic flows, apparently overburden. 8.3-10.0 - lost core										
10.0	APLITE: buff, f.g. crinkled appearance w. fine threadlike network of linear qtz. str., abundance of black secondary mineral (Tenorite?) & minor Phlochite on fracture surfaces, minor iron oxides, little or no Pyrite, minor MoS ₂ starting @ 16.5m app.	v. wk MoS ₂	4746	15	20	5	003				
		wk MoS ₂	4747	20	25	5	007				
		"	4748	25	30	5	008				
		"	4749	30	35	5	006				
		Fair MoS ₂	4750	35	40	5	007				
44.0	TUFF: dark grey, f.g. agglomerate in part w sand to abund mag to c.g. frags, cut by network of qtz-MoS ₂ str to near forming 5-6% of rock	wk MoS ₂	4751	40	45	5	007				
		Fair MoS ₂	4752	45	50	5	012				

DIAMOND DRILL CORE LOG -- SAMPLE RECORD

 PROPERTY 93E/URB

 HOLE No. 80-129

 SHEET No. 2 of 3

DEPTH	DESCRIPTION	MINERALIZATION	SAMPLE	FROM	TO	m	MoS ₂ %	Cu%			
44.0	TUFF: (cont'd) ool. thread or patch Cr ₂	wk MoS ₂	4753	50	55	5	0.07				
56.5-60.5	argillie w abund kaolinized frags & appreciable carb. as discrete str & threads, minor MoS ₂	"	4754	55	60	5	0.06				
		u. wk MoS ₂	4755	60	65	5	0.06				
		"	4756	65	70	5	0.10				
		wk MoS ₂	4757	70	75	5	0.07				
73.0	APLITE: buff. lg, cracked appearance as described previously, final 2.5m darker grey apparently due to incomplete replacement of Tuff.	"	4758	75	80	5	0.08				
		fair MoS ₂	4759	80	85	5	0.12				
		"	4760	85	90	5	0.08				
		wk MoS ₂	4761	90	95	5	0.05				
99.0	TUFF: dark grey, agglomeratic in part w 10-15% m.g. to c.g. pink & grey frags, mainly f.g. massive, fairly uniform, wk dissem Py & lesser Cr ₂ , 2-3% glc. str to 1cm. w some associated MoS ₂	"	4762	95	100	5	0.07				
		"	4763	100	105	5	0.07				
		"	4764	105	110	5	0.08				
		"	4765	110	115	5	0.10				
	108.1-2cm gouge @ 20	"	4766	115	120	5	0.13				

DIAMOND DRILL CORE LOG -- SAMPLE RECORD

 PROPERTY 93E/LRB

 HOLE No. 80-130

 SHEET No. 2 of 7

DEPTH	DESCRIPTION	MINERALIZATION	SAMPLE	FROM	TO	m	MoS ₂ %	Cu %			
31.1	QTZ MONZONITE Pdy: med. grey to pinkish, mainly mg. plenas, moderate argill. alt'n w/ Kspcr. gth.										
34.2	FELDSPAR PORPHYRY DIKE: med. to dark grey, abundant white to grey mg. to c.g. plenas in dark grey matrix, barren, top ckt. shd @ 55' over 10cm w/ abund. clay, btm ckt. sharp @ 55' w/ minor MoS ₂ in gtz.										
35.6	QTZ MONZONITE Pdy: pinkish grey, typical, mg. to c.g. porphyritic, moderate argill. alt'n, w/ Kspcr, 2-9% gtz strz, minor Py, occ. MoS ₂ w/ gtz & coating late fractures,										
		u. wk MoS ₂	4770	50	55	5	0.07				
	50.7-40cm Feldspar Ppy dike, top ckt. blocky @ 20, btm smooth @ 65,	Fair MoS ₂	4771	55	60	5	0.14				
	is. B - 45cm Feldspar Ppy, dark grey, ckt. sharp @ 75 + 65'	"	4772	60	65	5	0.14				
		"	4773	65	70	5	0.17				

DIAMOND DRILL CORE LOG -- SAMPLE RECORD

 PROPERTY 33E/LKW

 HOLE No. 40-130

 SHEET No. 4 of 7

DEPTH	DESCRIPTION	MINERALIZATION	SAMPLE	FROM	TO	m	MoS ₂ %	Cu%				
35.6	QTE MONZONITE Ppy: (cont'd)											
		wk MoS ₂	4782	160	165	5	0.08					
		"	4783	165	170	5	0.10					
		v. wk MoS ₂	4784	170	175	5	0.06					
		"	4785	175	180	5	0.06					
		"	4786	180	185	5	0.05					
		wk MoS ₂	4787	185	190	5	0.15					
		v. wk MoS ₂	4788	190	195	5	0.05					
		"	4789	195	200	5	0.04					
		"	4790	200	205	5	0.15					
	225.5 - 10 cm Feldspar Ppy @ 45											
		wk MoS ₂	4791	205	210	5	0.06					
	226.4 - 30 cm qtz w gold MoS ₂ @ 20											
		v. wk MoS ₂	4792	210	215	5	0.11					
	229.5 - 25 cm Feldspar Ppy @ 40-55											
		"	4793	215	220	5	0.04					
		"	4794	220	225	5	0.04					

DIAMOND DRILL CORE LOG -- SAMPLE RECORD

 PROPERTY 93E/LRB

 HOLE No. 80-130

 SHEET No. 5 of 7

DEPTH	DESCRIPTION	MINERALIZATION	SAMPLE	FROM	TO	m	MoS ₂ %	Cu%				
35.6	QTZ MONZONITE Ppy: (cont'd)	good MoS ₂	4795	225	230	5	033					
		fair MoS ₂	4796	230	235	5	022					
		v. wk MoS ₂	4797	235	240	5	006					
244.8-257.0	grey white, strongly argillie,	v. wk MoS ₂	4798	240	245	5	006					
		wk MoS ₂	4799	245	250	5	006					
253.3-300m	fault zone, brecciated w/ abund. qtz. frags & clayey matrix, faultwall v. sharp @ 70,	wk MoS ₂	4800	250	255	5	009					
		v. wk MoS ₂	4801	255	260	5	008					
		fair MoS ₂	4802	260	265	5	013					
275.8-289.5	mod. to strong argillie alt w 10% irreg patches & bands pink K spar,	wk MoS ₂	4803	265	270	5	007					
		"	4804	270	275	5	006					
		v. wk MoS ₂	4805	275	280	5	004					
		wk. MoS ₂	4806	280	285	5	014					
		v. wk MoS ₂	4807	285	290	5	009					
		fair MoS ₂	4808	290	295	5	026					
		wk MoS ₂	4809	295	300	5	009					

DIAMOND DRILL CORE LOG -- SAMPLE RECORD

 PROPERTY SSE/128

 HOLE No. 80-130

 SHEET No. 6 of 7

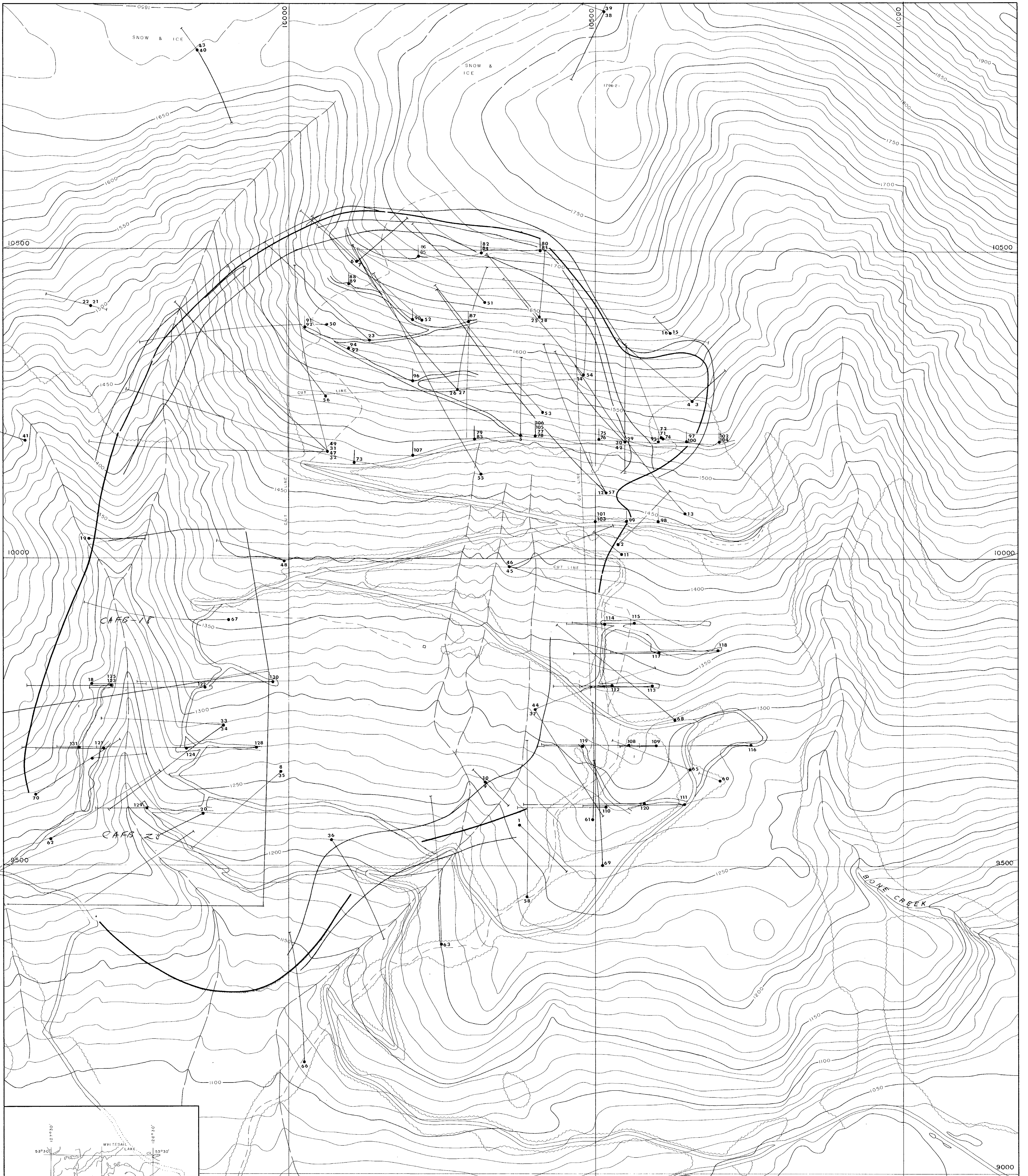
DEPTH	DESCRIPTION	MINERALIZATION	SAMPLE	FROM	TO	m	MoS ₂ %	Cu%				
36.5	Qtz Monzonite Ppy! (cont'd)	fair MoS ₂	4810	300	305	5	0.12					
		wk MoS ₂	4811	305	310	5	0.06					
		"	4812	310	315	5	0.16					
		v. wk MoS ₂	4813	315	320	5	0.07					
		"	4814	320	325	5	0.10					
		"	4815	325	330	5	0.08					
		"	4816	330	335	5	0.13					
339.0 -	60 cm grey qtz @ 20-25, fair MoS ₂ , minor gypsum as clear waxy inclusions	wk MoS ₂	4817	335	340	5	0.12					
		v. wk MoS ₂	4818	340	345	5	0.04					
		wk MoS ₂	4819	345	350	5	0.06					
357.0 - 357.0	Fault Zone, strongly argillic w abundant Pyrgs. a gouge, minor qtz. Py. veinings & one thread MoS ₂ @ 35, 5 cm	fair MoS ₂	4820	350	355	5	0.21					
		wk MoS ₂	4821	355	360	5	0.15					
		"	4822	360	365	5	0.08					
		"	4823	365	370	5	0.07					

DIAMOND DRILL CORE LOG - SAMPLE RECORD

DEPTH	D	BEARING 1st.
COLLAR	50°10'	West
100m	50°	

PROPERTY 93E/URB CLAIM _____ HOLE NO. 41-131
 LATITUDE 9622.3 STARTED 1980-08-16 CORE SIZE 80
 DEPARTURE 9656.6 FINISHED 1980-08-18 SECTION 2700-4
 ELEVATION 1272.7 TOTAL LENGTH 143.8m LOGGED BY J.D. Murphy

DEPTH	DESCRIPTION	MINERALIZATION	SAMPLE	FROM	TO	m	MoS ₂ %	Cu%			
0.0	CASING: stick up 0.6m										
22.5	APLITE: grey buff w pinkish cast, v.f.g., badly broken & blocky w. few sections core >10cm, no matrix noted, significant MoS ₂ w glt & ore fracture coating, minor stib. Py, numerous graphite strips & associated w MoS ₂ -glt. str.	Fair MoS ₂	4826	22.5	30.0	7.5	.07				
		"	4827	30	35	5	.01				
		"	4828	35	40	5	.10				
		1.0m ground wk MoS ₂	4829	40	45	5	.07				
	53.0 - 6cm clayey fracture w ls.	"	4830	45	50	5	.07				
	53.2 - 2cm fractured glt-MoS ₂ str. w 70-75,	Fair MoS ₂	4831	50	55	5	.25				
54.3	Qtz Monzonite Ppt: pinkish grey mg to c.g porphyritic, 4-5% glt str to 3cm w significant MoS ₂ & graphite, w Ksp. afts, noticeably more competent than foregoing Aplite section, contact gradational but fairly distinct.	"	4832	55	60	5	.08				
		good MoS ₂	4833	60	65	5	.22				
		fair MoS ₂	4834	65	70	5	.21				
		wk MoS ₂	4835	70	75	5	.09				
	62.7 - 2cm clayey fragmental Fault @ 80	Fair MoS ₂	4836	75	80	5	.09				
	64.2 - 4cm fault as above	"	4837	80	85	5	.14				



MINERAL RESOURCES BRANCH
ASSESSMENT REPORT
8349

LOCATION MAP
1:1,000,000

LEGEND

Road, all weather	Claim Post, known
Road, four wheel drive	Claim Post, assumed
Limit of timber	Drill hole, drilled
Open swamp, meadow	Drill hole, proposed

PACIFIC SURVEY CORPORATION 79-91
BASE MAP

HAVEN LAKE
W.L. 1036

CRAIGMONT MINES LIMITED
KAMLOOPS, B. C.
93E/68B GROUP
SURFACE PLAN

Scale: 1:2,500 Date: *Sept 1981* Approved: *[Signature]*

Drawn by: *[Signature]*