

Geochemical Assessment Report

on the

STEM NO. 1 to NO. 12, DICK and SPID CLAIMS
(Pipe Group)

Situated

20 kilometers northeast of Hope, B. C.

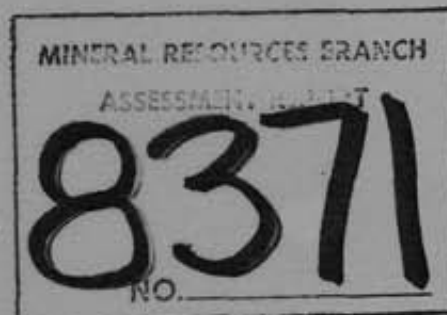
New Westminster M. D.

N.T.S. 92H/11W

Latitude 49°32'N Longitude 121°18'W

on behalf of

AQUARIUS RESOURCES LTD.



Field work between July 2 and July 30, 1979

Report by

D. R. Cochrane, P. Eng.,
August 25, 1980,
Delta, B. C.



Cochrane Consultants Limited
4882 Delta St., Delta, B.C. V4K 2T8 946-9221
Geotechnical Consulting / Exploration Services

geology
geophysics
geochemistry

TABLE OF CONTENTS

	Page
INTRODUCTION	1
LOCATION AND ACCESS	2
CLAIMS INFORMATION	3
GENERAL SETTING	5
FIELD PROCEDURES	6
DISCUSSION	8

FIGURES

1. Location Map	Report body
2. Claims Map	" "
55-58 (south half) Geochemical Data and Contours	Map Pocket

APPENDICES

I	Assessment Work Details
II	Bibliography
III	Certificate



INTRODUCTION

The Pipe Group of Mineral Claims lies along the northern portion of the Coquihalla Gold Belt, and is part of a large number of mineral claims being actively explored for gold by Aquarius Resources Ltd., of Vancouver, B. C.

In July, 1979, a field crew under the direction of Mr. Jon Stewart, completed a ground control grid, and geochemical soil sampling survey on the Dick, Spid, and Stem 11 and 12 mineral claims in the Pipe Group.

This report is designed for assessment work submission; assessment work details and costs are set out in Appendix I at the end of this report.

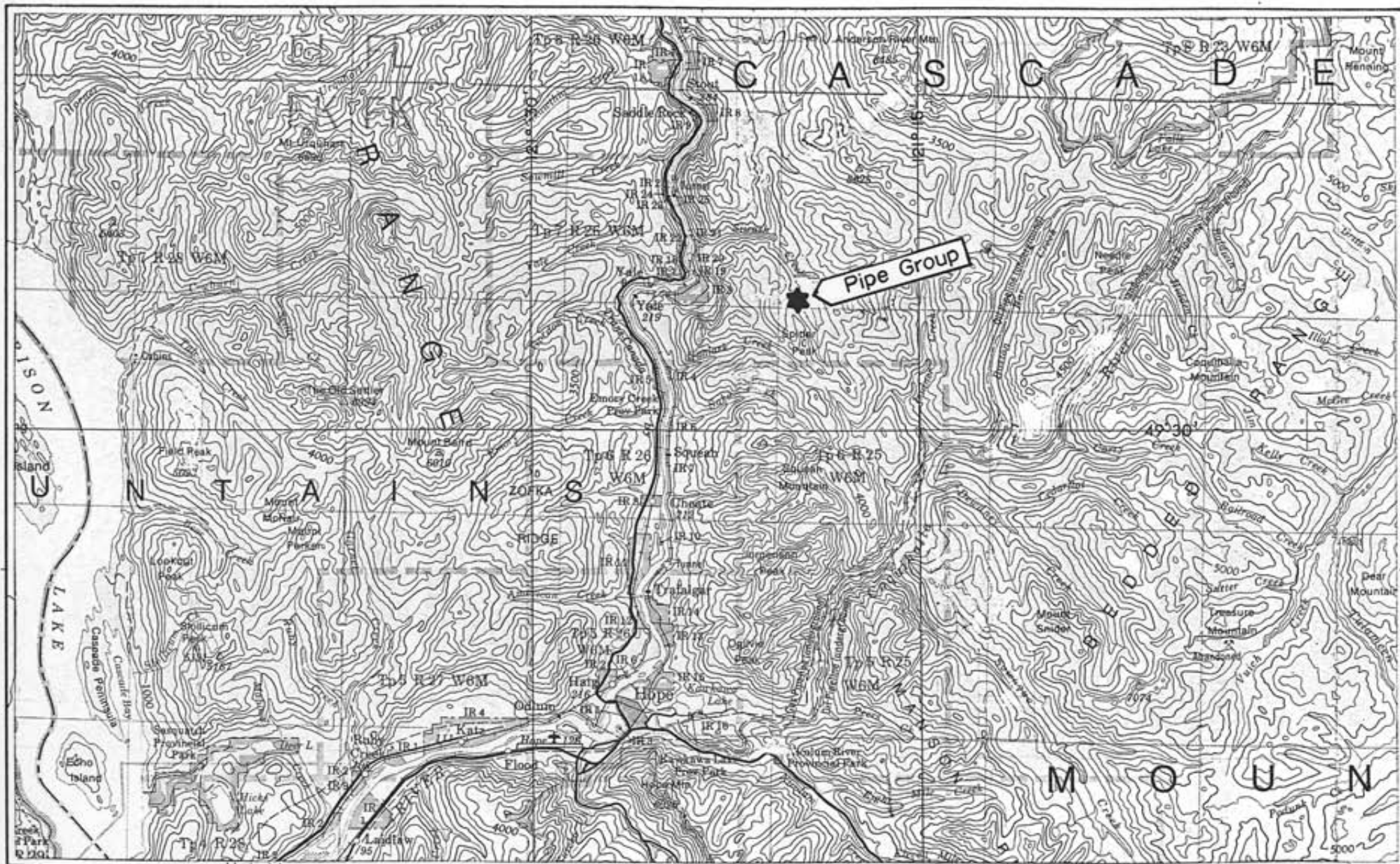


LOCATION AND ACCESS

Access to the Pipe Group of mineral claims has been made more facile by the extension of the Siwash Creek logging road from the main forks of Siwash Creek to the northern boundary of the Dick mineral claim, by Catermole Timber Ltd. From the east side of the Alexandra Bridge on highway No. 1, proceed southerly along the Hidden Creek logging road and thence Siwash Creek logging road approximately 18 km. Foot access to the claims is then via cut baseline. Access to the southern portion of the Pipe Group (Stem Claims) is by foot, on the Pipestem trail. Completion of Catermole's Siwash Creek road, and Carolin's Pipestem road, scheduled for late this year, will provide more facile access.

The N.T.S. code for the area is 92H/11W; the latitude is 49°32'N., and longitude 121°18'W., (see Location Map, Figure 1).





AQUARIUS RESOURCES LTD.

Pipe Group, Siwash Cr. Area, B.C.
New Westminster Mining Division

(Stem, Spid & Dick Claims)
N.T.S. 92H/11

LOCATION MAP

0 5 10 km

Scale 1:250,000

Figure 1

K.U. AUG '80



Cochrane Consultants Limited
4402 Delta St., Delta, B.C. V4E 2T5 944-9271

CLAIMS INFORMATION

The Pipe Group consists of twelve two-post claims and two modified grid staked claims owned by Aquarius Resources Ltd., 475 Howe Street, Suite 1002, Vancouver, B. C., V6C 2B3. Claims are plotted on Department of Mines and Petroleum Resources map M92H/11W., and are located in the New Westminster Mining Division (see claims Map, Figure 2).

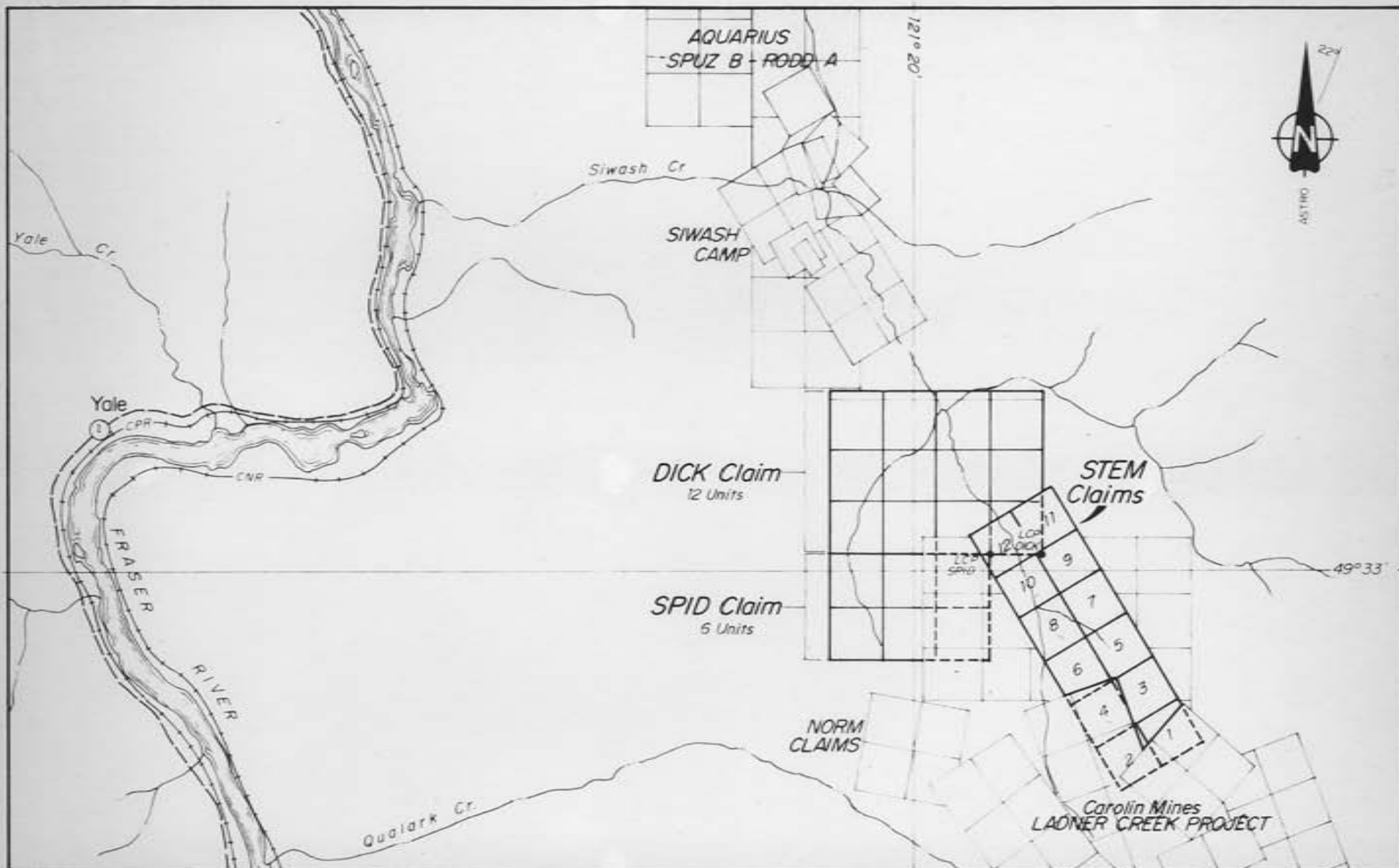
The following table lists pertinent claims information:



CLAIM NAME	UNITS	RECORD NUMBER	ANNIVERSARY DATE	*EXPIRY YEAR
Stem 1	----	29356	July 2	1984
Stem 2	----	29357	July 2	1984
Stem 3	----	20358	July 2	1984
Stem 4	----	29359	July 2	1984
Stem 5	----	29360	July 2	1984
Stem 6	----	29361	July 2	1984
Stem 7	----	29362	July 2	1984
Stem 8	----	29363	July 2	1984
Stem 9	----	29364	July 2	1984
Stem 10	----	29365	July 2	1984
Stem 11	----	29366	July 2	1984
Stem 12	----	29367	July 2	1984
Dick	12	232	Sept. 21	1984
Spid	6	231	Sept. 21	1984

* includes assessment work credits applied for by this report





AQUARIUS RESOURCES LTD.

Pipe Group, Siwash Cr. Area, B.C.
New Westminster Mining Division

(Stem, Spid & Dick Claims)
N.T.S. 92H/11

CLAIMS MAP

0 500 1000 2000m

Scale 1:50,000

Figure 2

B.A.C. NOV. 77
Revised Aug '80



Cochrane Consultants Limited
4882 Delta St. Delta B.C. V9B 1T8 493 8221

GENERAL SETTING

The Pipe Group lies along the Coquihalla Gold Belt situated in the Cascade Mountain Range. The country is characteristically rugged with Spider Peak rising 1800 m A.S.L. to the south, and Siwash Creek and its tributaries cutting the heavy forest cover to as low as 600 m to the north.

The Stem claims are situated east of the Coquihalla Serpentine Band, within the Jurassic Ladner Slate sequence; a thick sedimentary pile of argillites, greywackes and slates. The Dick and Spid claims straddle the Serpentine Band. The Ladner slates are host rocks to replacement type gold deposits such as the Carolin Mines' McMaster and Idaho Gold Zones, to the south, and the Aquarius Resources' Monument Zone to the north.

Recent exploration interest in the area results from the higher price of gold, and the Carolin Mines (Idaho Gold Zone) production plans.



FIELD PROCEDURES

A baseline was chain saw cut, and slope chained due south from the end of the Siwash Creek Road a distance of 500 m, thence southeasterly, 150° true, a distance of 1300 m. Cross lines were flagged and blazed each 100 m and extend 800 m to the west, and 700 m to the east. Soil samples were collected by hand tools from the upper "B" soil horizon at 25 m intervals along the cross lines. Samples were placed in grid numbered kraft paper bags, air dried at the "Siwash Arms" base camp, and then shipped by four wheel drive truck to Min-En Labs. Ltd., of North Vancouver, B. C.

At Min-En Labs the soil samples were screened to -80 mesh, and analysis for gold was by Aqua Regia digestion, and atomic absorption technique.

Analytical results were sent to the office of Cochrane Consultants Ltd., and plotted with reference to the field notes.



Results are shown in Figure 55-58 (south half) with values in parts per billion, and contour intervals of 15, 45, and 75 parts per billion levels.



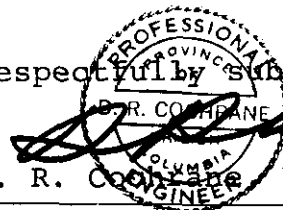
DISCUSSION

The gold content of the upper "B" soil horizon on the Pipe Group grid ranged from below detection limit (less than 5 parts per billion) to a high of 1800 parts per billion. Previous geochemical experience in the area, and statistical information, has suggested values between 45 and 75 parts per billion may be considered moderately anomalous, and values greater than 75 parts per billion may be considered strongly anomalous: 14 samples are moderately anomalous and 20 samples are strongly anomalous. These are plotted on Figure 55-58 (south half).

The main area of geochemical interest lies on the west side of lines 30 through 34 south where there is a series of apparently north westerly trending, sub parallel anomalies. More detailed sampling work is required in this area and should follow and be based on geological mapping followup work of this section of the grid.

Respectfully submitted

D. R. COCHRANE P. Eng.



APPENDIX I

ASSESSMENT WORK DETAILS

Mr. J. Stewart, supervisor, July 2 to 13, July 25 to 30, 18 days at \$160/day	\$ 2,880.00
Fieldperson, July 2 to 13, July 16 to 20, July 24 to 30, 24 days at \$100/day	2,400.00
Fieldperson, July 2 to 13, July 16 to 20, July 24 to 30, 24 days at \$100/day	2,400.00
Camp expense, 66 man days at \$20/day	1,320.00
Lab expense, 978 samples at \$4.85/sample	4,743.30
Vehicles, 1 truck, 24 days at \$27.50/day	660.00
1 truck, 18 days at \$27.50/day	495.00
Miscellaneous field supplies	192.50
D. R. Cochran, P. Eng., 2 days at \$300/day	600.00
Draftsperson, 89 hours at \$17.50/hr	1,557.50
Typist, 7 1/2 hours at \$12/hr.	90.00
Reproduction, collation, binding	<u>91.00</u>
TOTAL	\$ 17,429.30



APPENDIX II

BIBLIOGRAPHY

1. CAIRNS, C. E. (1929) The Serpentine Belt of Coquihalla Region Yale District, B. C., G. S. C. Summary Report 1929-A
2. CAIRNS, C. E. (1924) Coquihalla Area, British Columbia, G. S. C. Memoir 139
3. COCHRANE, D. R. Various property examinations and private reports, Coquihalla Gold Belt, B. C.
4. COCHRANE, D. R. (1976) Geophysical and Geochemical Assessment Report on the Stem No. 1 to Stem No. 12 Claim.
5. COCHRANE, D.R and LITTLEJOHN, A. L. (1977, revised 1978) Geophysical and Geochemical Assessment Report on the Stem No. 1 to Stem No. 12, Dick and Spid Claims (Pipe Group)
6. MONGER, J.W.H. (1969) G. S. C. Paper 69-47, Hope Sheet (west half)
7. McTAGGART, K.C., and THOMPSON, R.M., (1967) Geology of Part of the Northern Cascades, Canadian Journal of Earth Sciences, Vol. 4
8. STEVENSON, J.S. Lode Gold Deposits, Southwestern British Columbia, B. C. Department of Mines, Bulletin 20, part IV.

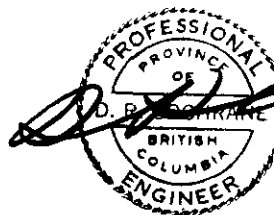


APPENDIX III

CERTIFICATE

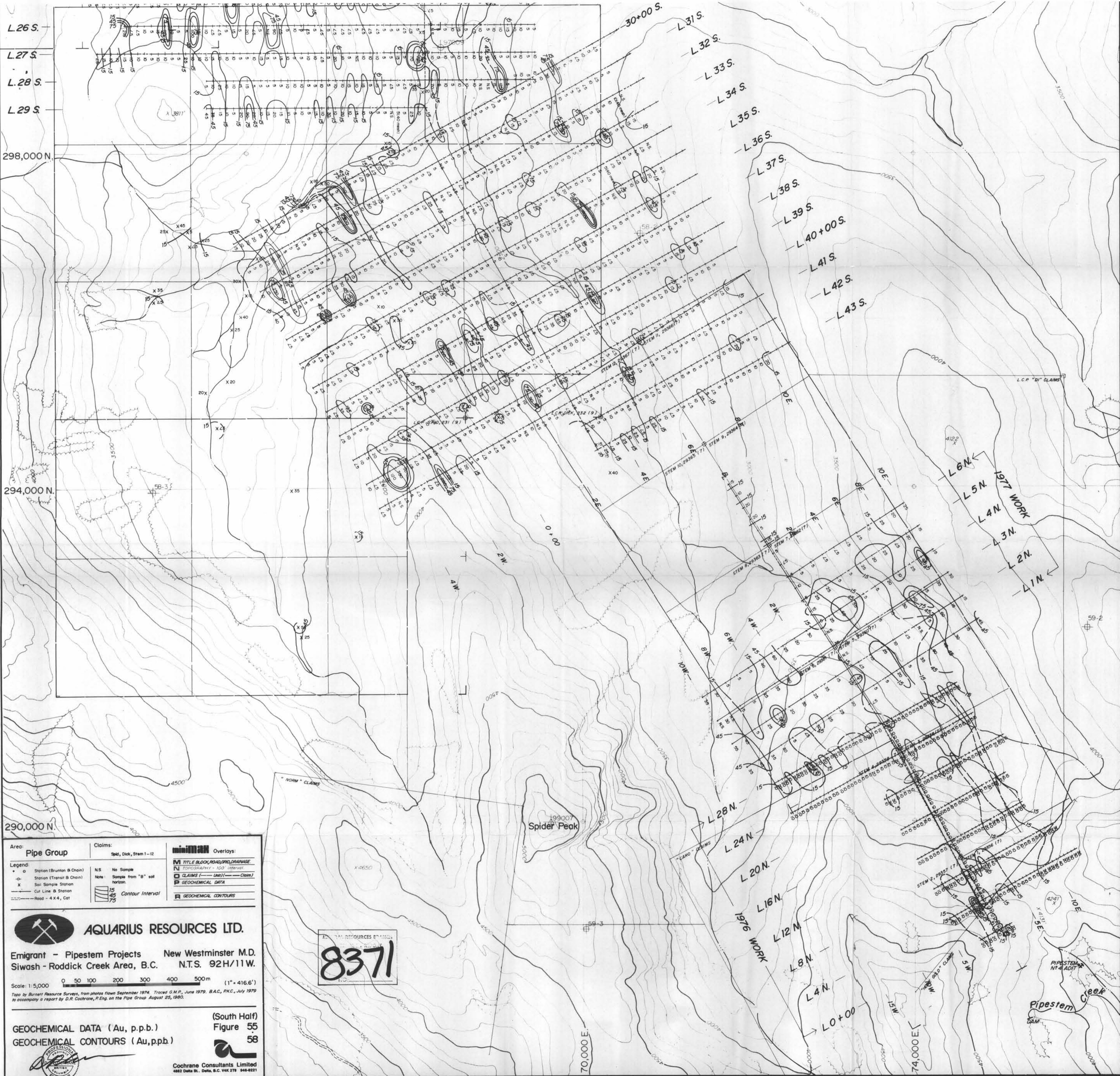
I, Donald Robert Cochrane of the Municipality of Delta, British Columbia, do hereby certify that:

1. I am a consulting geological engineer with an office at 4882 Delta Street, Delta, B. C.
2. I am a graduate of the University of Toronto (1962) with a degree in Applied Geology (B.A.Sc.) and a graduate of Queen's University (1965) with a Master of Science Degree in Geological Sciences (Engineering).
3. I have practiced my profession continuously since graduation while being employed by such companies as Noranda Exploration Co. Ltd., Quebec Cartier Mines, and Meridian Explorations Syndicate. I have been in private independent practice since 1969.
4. I have no interest, either direct or indirect in the properties or securities of Aquarius Resources Ltd., nor do I expect to acquire any such interest.
5. I am a member in good standing of the Association of Professional Engineers (A.P.E.) of the Province of British Columbia, and also a member of the A.P.E. in the province of Ontario, Saskatchewan, Alberta and the Yukon Territories.



D. R. Cochrane, P. Eng.,
August 25, 1980,
Delta, B. C.





Area: Pipe Group		Claims: Spd, Dick, Stem 1-12	Overlays:
Legend:	NS No Sample	Note Sample from "B" soil horizon	M TITLE BLOCK, ROAD, DRAINAGE
Station (Brunton & Chain)	15 Contour Interval	75 Contour Interval	N TOPOGRAHY - 100 Interval
Station (Transit & Chain)			CLAIMS (--- UNCL --- Claim)
Soil Sample Station			GEOCHEMICAL DATA
Cut Line & Station			GEOCHEMICAL CONTOURS
Road - 4 X 4, Cut			

AQUARIUS RESOURCES LTD.

Emigrant - Pipestem Projects New Westminster M.D.
Siwash - Roddick Creek Area, B.C. N.T.S. 92H/11W.

Scale: 1:5,000 0 50 100 200 300 400 500m (1" = 416.6')

Topo by Burnett Resource Surveys, from photos flown September 1974. Traced G.M.P., June 1979. B.A.C., P.K.C., July 1979 to accompany a report by D.R. Cochrane, P.Eng. on the Pipe Group August 25, 1980.

8371

GEOCHEMICAL DATA (Au, p.p.b.)
GEOCHEMICAL CONTOURS (Au, p.p.b.)

(South Half)
Figure 55
58

Cochrane Consultants Limited
4822 Delta St., Delta, B.C. V4K 2T9 948-2221