

E A S T E R P R O P E R T Y

EASTER EGG AND
EASTER BUNNY
MINERAL CLAIMS

WHITE RIVER AREA

NTS 103 P/14 ~~W~~

Lat. 55° 48.4' N Long. 129° 26' W

SKEENA M.D.

PROSPECTING

REPORT ON GEOLOGY

BY

K.W. LIVINGSTONE, MSc.

July 1980

Operator: PRISM RESOURCES LTD.

Contractor: JMT SERVICES CORP.

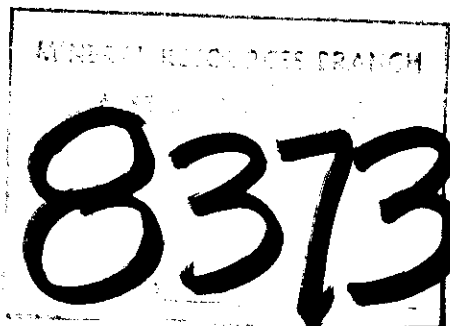


TABLE OF CONTENTS

	<u>PAGE</u>
LOCATION AND ACCESS	1
GEOLOGY	1
MINERALIZATION	5
RECOMMENDATIONS	6
STATEMENT OF COSTS	7

FIGURES

LOCATION MAPS	2, 3, 4
GEOLOGY	in pocket

LOCATION AND ACCESS

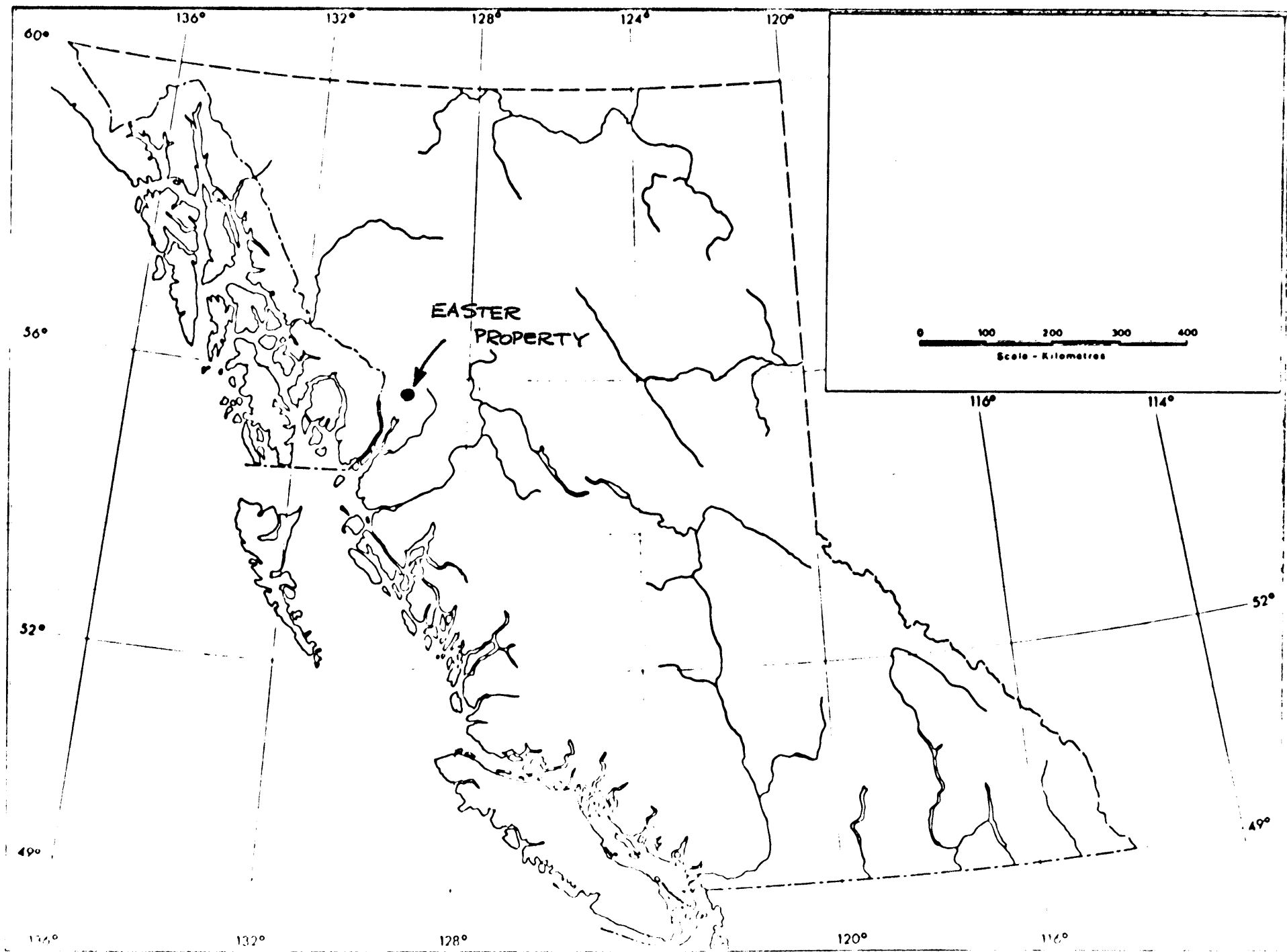
The Easter Property comprises the EASTER EGG claim record no. 1282, 16 units, and the EASTER BUNNY claim record no. 1283, 8 units. They are located near the headwaters of the White River at approximately 129° 26' W Long., 55° 48.4' N Lat. on NTS map 103 P/14~~IV~~. It is situated approximately 37 km S.E. of Stewart B.C. and 35 km West of Anderson camp junction and airstrip on the Highway from Terrace to Meziadin Jct on the Stewart Cassiar Highway.

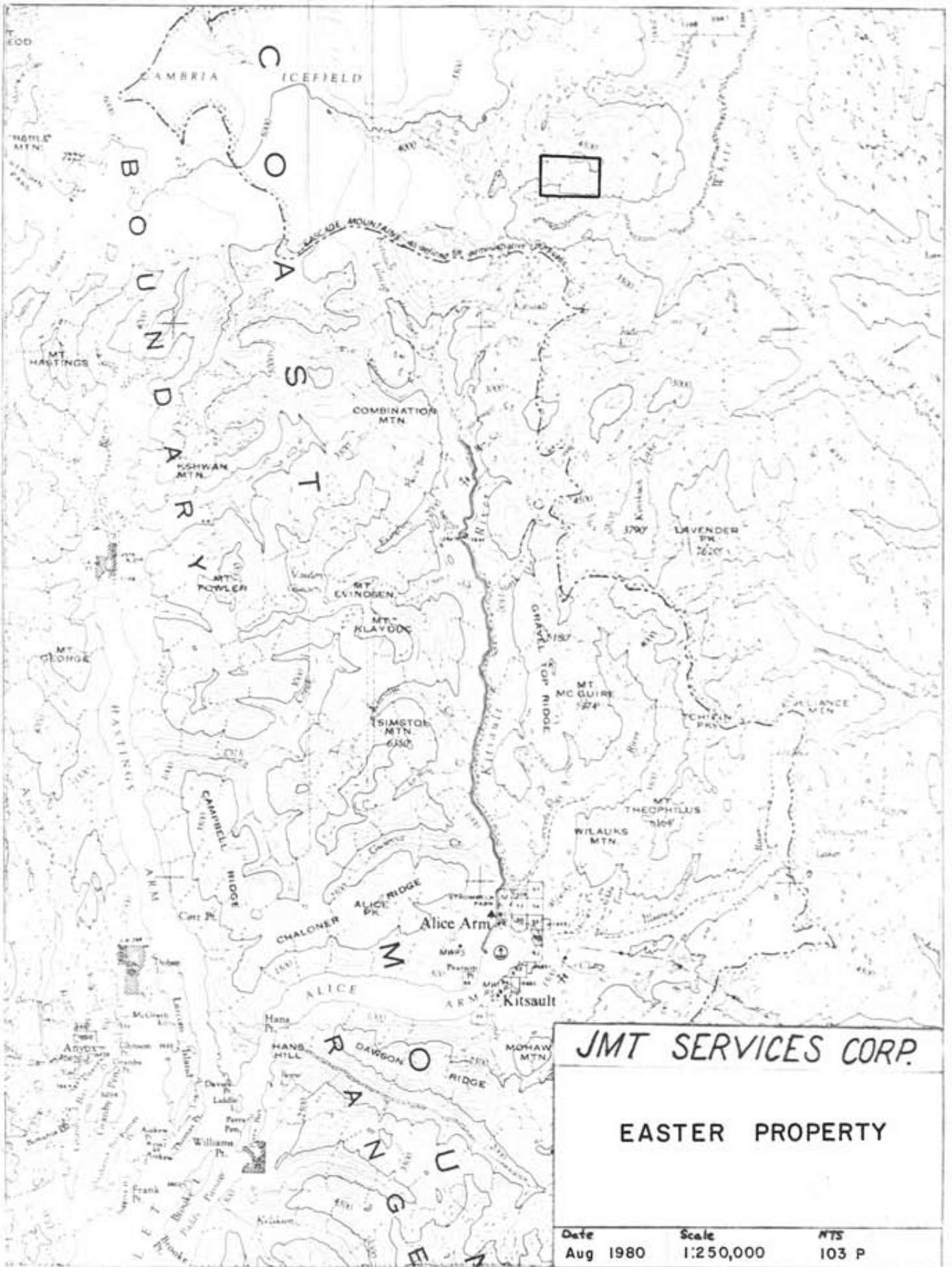
Access to the property is from Stewart or Kitsault via helicopter.

The property is on a southwesterly facing slope with relief of approximately 1000 m. The lower elevations up to about the 1100 or 1200 m level have small trees and shrubs. Above the 1200 m level, shrubs give way quickly to sub alpine and alpine vegetation types.

GEOLOGY

The Easter prospect is centered on a biotite granodiorite which is locally quartz diorite near its contact with the Bowser sedimentary rocks. The granodiorite intrusion created a biotite hornfels in the Bowser shales, argillites and greywackes around the margins of the stock. Intruding the granodiorite stock and the adjacent hornfels are aplite dykes and sills. Locally the dykes form swarms comprising up to 30% of the outcrop. Individual dykes are rarely greater than 3 meters wide.

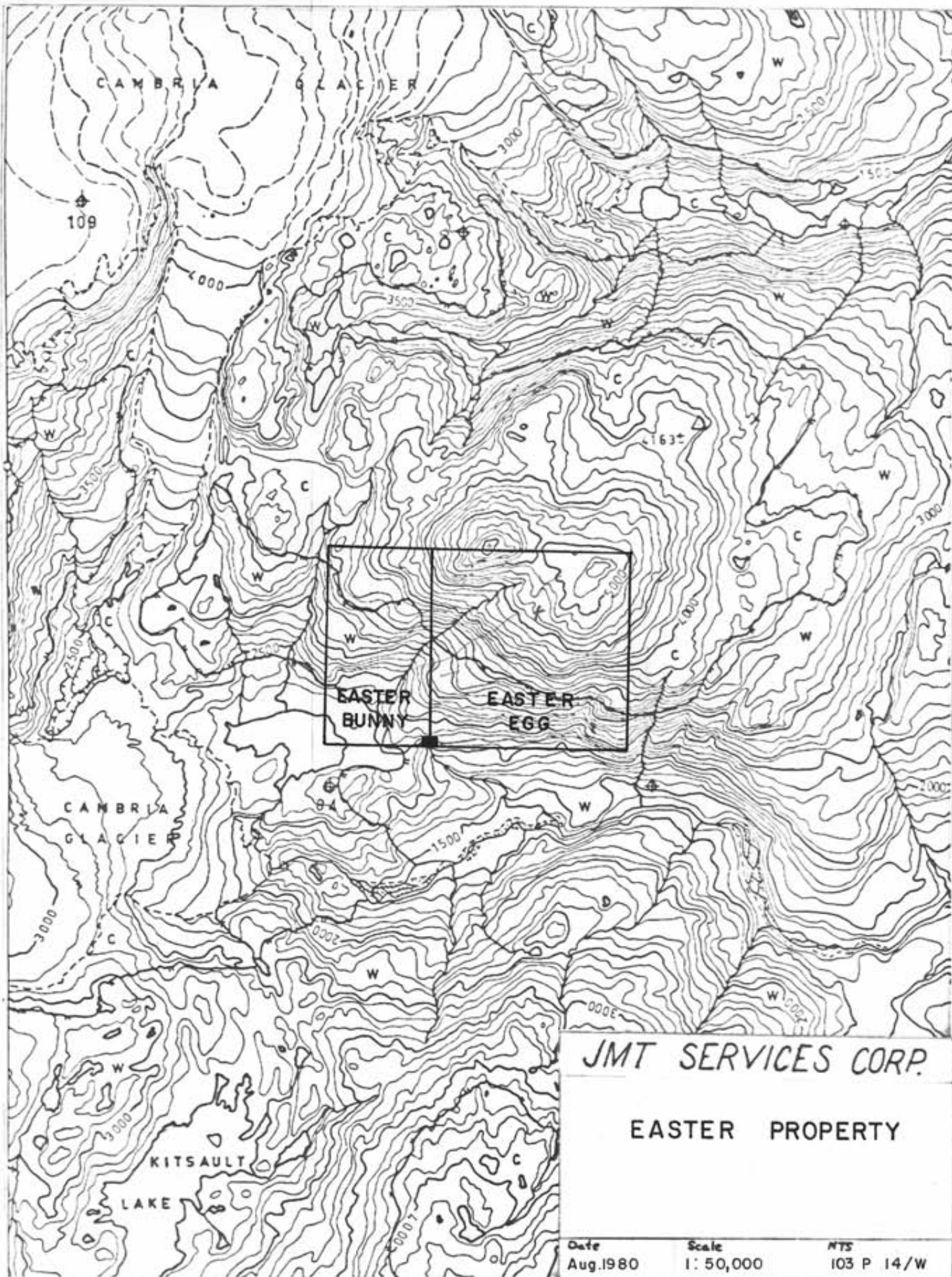




JMT SERVICES CORP.

EASTER PROPERTY

Date	Scale	NTS
Aug 1980	1:250,000	103 P



JMT SERVICES CORP.

EASTER PROPERTY

Date
Aug. 1980

Scale
1: 50,000

NTS
103 P 14/W

MINERALIZATION

There appears to be several stages of quartz veining and molybdenite mineralization. There is an early barren quartz vein in the biotite hornfels. This veining has a bleached envelope adjacent to the quartz. This quartz vein event is cut by granodiorite dykes near the contact with the intrusive.

The granodiorite appears to have three sets of mineralized veins and fractures and at least one set of barren quartz veinlets. The age relationships between all of these is not clear. Molybdenite is present in up to 1 cm. quartz veins as disseminations in the quartz. The veins have thin sericite selvages. Occasionally molybdenite is present on fracture surfaces without quartz. A younger milky white quartz vein up to 10 cm. contains disseminated and selvage molybdenite - pyrite. This style of quartz vein generally is flat-lying to gentle dipping. On the west side of the system this vein type locally contains galena.

The aplite dykes cut the molybdenite bearing quartz veins in the granodiorite. The dykes themselves have thin quartz veinlets up to 5 mm. which are locally molybdenite bearing. There is a younger steeply dipping barren mildly quartz vein which also cuts the aplite.

One occurrence of pebble breccia was noted. This pebble breccia cuts an aplite dyke near the contact between the granodiorite and hornfels. Fragments in the pebble breccia are dominantly quartz vein material and aplite. Some of the fragments of aplite are weakly mineralized. There is minor molybdenite in the matrix.

CONCLUSIONS & RECOMMENDATIONS

The intrusive complex displays a number of mineralizing events. The distribution of molybdenite is widespread throughout the granodiorite and is related to multi-stage quartz - veining. The prospect requires a detail rock geochemical study to further determine the geochemical relationship of the aplite with the granodiorite and hornfels. This study would be used as a zoning guide for the location of drill sites.

STATEMENT OF COSTS July 24 - 27

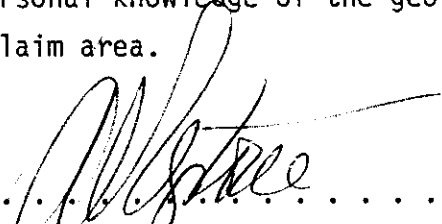
Airfare	Vancouver to Terrace return - 2 men	150.00
Helicopter	Okanogan Terrace Terrace to property return Jet Ranger 206 4.0 hrs @ \$365.00	1460.00
Wages	K.W. Livingstone D.H. James 2 1/2 days, 2 men @ \$150.00/day	750.00
Food	5 man days @ \$15.00	75.00
Taxis	Vancouver & Terrace	20.00
Report		<u>200.00</u>
	TOTAL:	\$ 2655.00

Total to be applied: \$ 2400.00

STATEMENT OF QUALIFICATIONS

I, K. WAYNE LIVINGSTONE of Vancouver, British Columbia do hereby certify that,

1. I am a Professional Geologist, working in British Columbia and residing at 6775 West Blvd. Vancouver, B.C.
2. I am a graduate of CARLETON UNIVERSITY, Ottawa, Ontario with BSc honours geology 1966.
3. I am a graduate of the UNIVERSITY OF BRITISH COLUMBIA with MSc geology 1968.
4. I have practiced my profession as a mining exploration geologist since 1965.
5. I am a Member of the Geological Association of Canada.
6. I am a Member of the CIMM.
7. This report is based on personal knowledge of the geology and mineral potential of the claim area.


.....
K. WAYNE LIVINGSTONE, MSc.

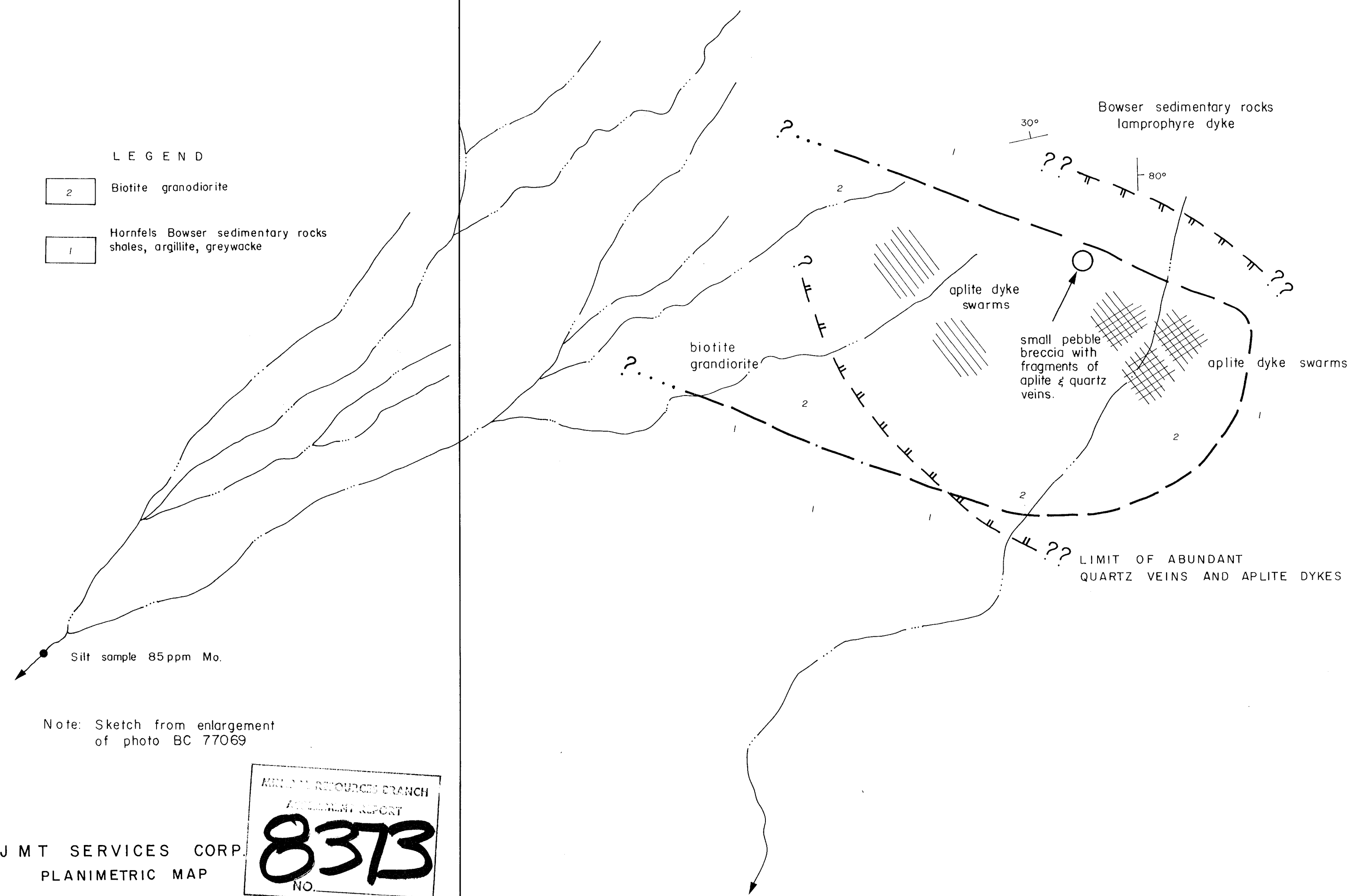
July 15, 1980



cliff faces
Bowser sedimentary rocks

LEGEND

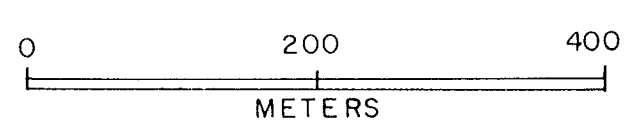
- 2 Biotite granodiorite
- 1 Hornfels Bowser sedimentary rocks
shales, argillite, greywacke



Note: Sketch from enlargement
of photo BC 77069

JMT SERVICES CORP.
PLANIMETRIC MAP
EASTER PROPERTY

MINERAL RESOURCES BRANCH
ASSESSMENT REPORT
8373
NO.



LCP