

Geochemical Assessment Report  
on portions of the  
Spuz Group (Spuz A, B, C, G, Mineral Claims)  
and  
Rod E Mineral Claim

Located 27 Air km  
North Northeast of Hope, B.C.  
in the

New Westminster Mining Division

N.T.S. 92H/West Half

Latitude 49°37'N., Longitude 121°21'W

Field Work Done July 1 to July 25, 1980

on behalf of

AQUARIUS RESOURCES LTD  
of  
Vancouver, B. C.

MINERAL RESOURCES BRANCH  
ASSESSMENT REPORT  
8394  
NO.

PART 1 of 2

Report by:

D. R. Cochrane, P. Eng.,  
September 16, 1980,  
Delta, B. C



Cochrane Consultants Limited  
4882 Delta St., Delta, B.C. V4K 2T8 946-9221  
Geotechnical Consulting / Exploration Services

geology  
geophysics  
geochemistry

TABLE OF CONTENTS

	PAGE
INTRODUCTION.....	1
LOCATION AND ACCESS.....	2
CLAIMS INFORMATION.....	3
GENERAL SETTING.....	4
FIELD PROCEDURES.....	6
RESULTS.....	7

FIGURES

1.	Location Map	Report body
2.	Claims Map	" "
53-57.	Geochemical Data and Contours	Map Pocket

APPENDICES

I	Assessment Work Details
II	Certificate



INTRODUCTION

During July, 1980, a field crew mobilized to the Siwash Arms base camp located on the "Spuz C" mineral claim, some twenty-seven (27) air kilometres north-northeast of Hope, B. C.

A grid was established on portions of the Spuz C mineral claim ( Spuz Group ) and the adjacent Rod E mineral claim. Five hundred and forty-three (543) soil samples were collected and analyzed for gold.

This report describes this work and is prepared for assessment work submission. Details are tabulated in Appendix I.



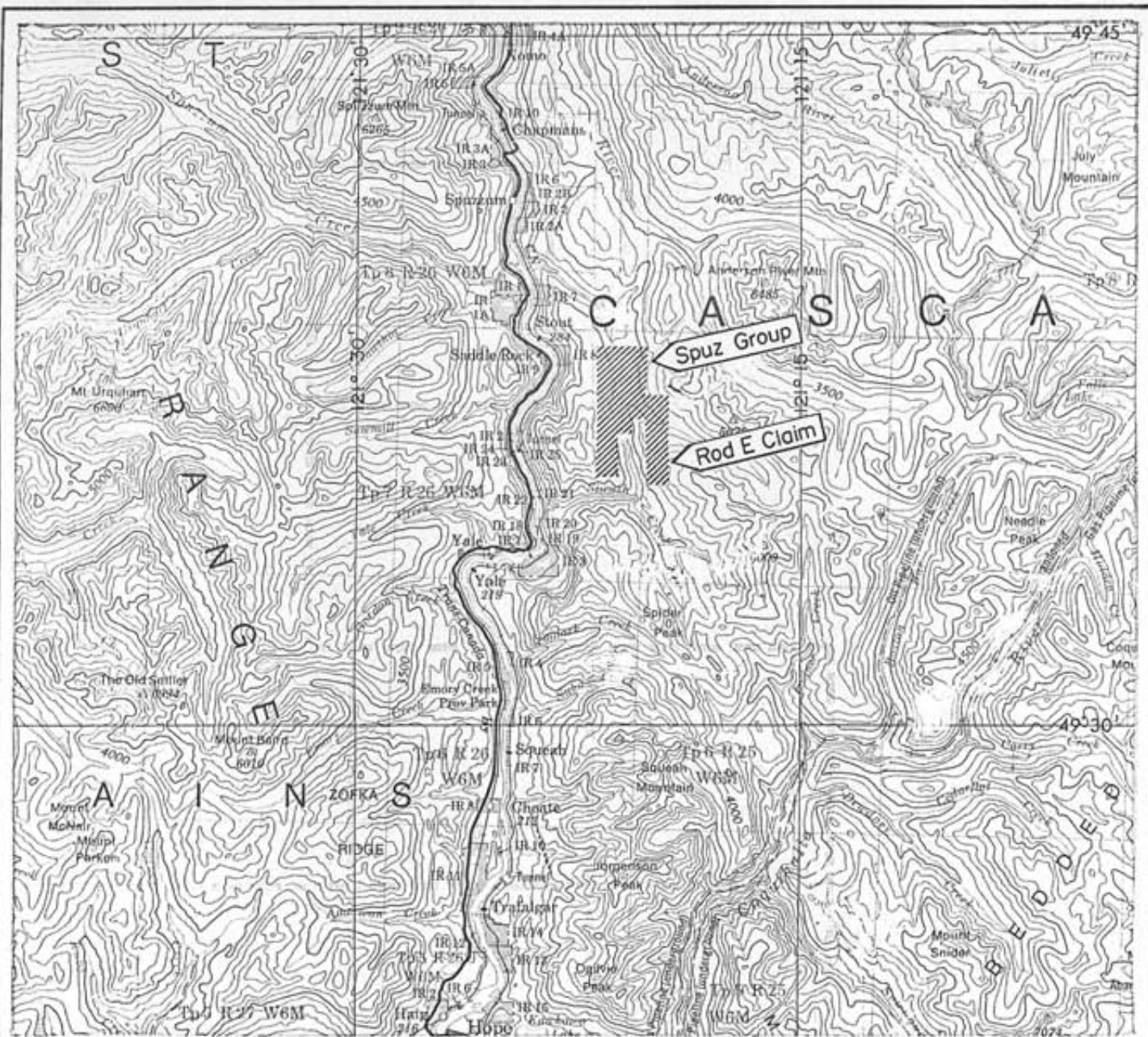
LOCATION AND ACCESS

The Spuz Group, and Rod E mineral claim, are located east of the Fraser River, in the Siwash Creek Valley, some twenty-seven (27) air kilometres north-northeast of Hope, B. C.

Four wheel drive access, via the Siwash Creek logging road, begins at Highway No. 1, just immediately north of the Alexandra Bridge in the Fraser Canyon. From this point one proceeds south on good logging roads to kilometre twelve (12). Fair to good access to the claims is provided by logging roads, the remainder is by foot.

The latitude is  $49^{\circ}37'N.$ , longitude is  $121^{\circ}21'W.$ , (see Figure 1).





**AQUARIUS RESOURCES LTD.**

Spuz Group & Rod E Claims

New Minister M.D.

Figure 1  
Location Map

Scale : 1 to 250,000 or 1 inch equals approx. 4 miles.

0 1 2 3 4 5 10 miles

0 1 2 3 4 5 10 15 kilometres



Cochrane Consultants Limited  
4882 Delta St. Delta B.C. V4A 2T8 644 8221

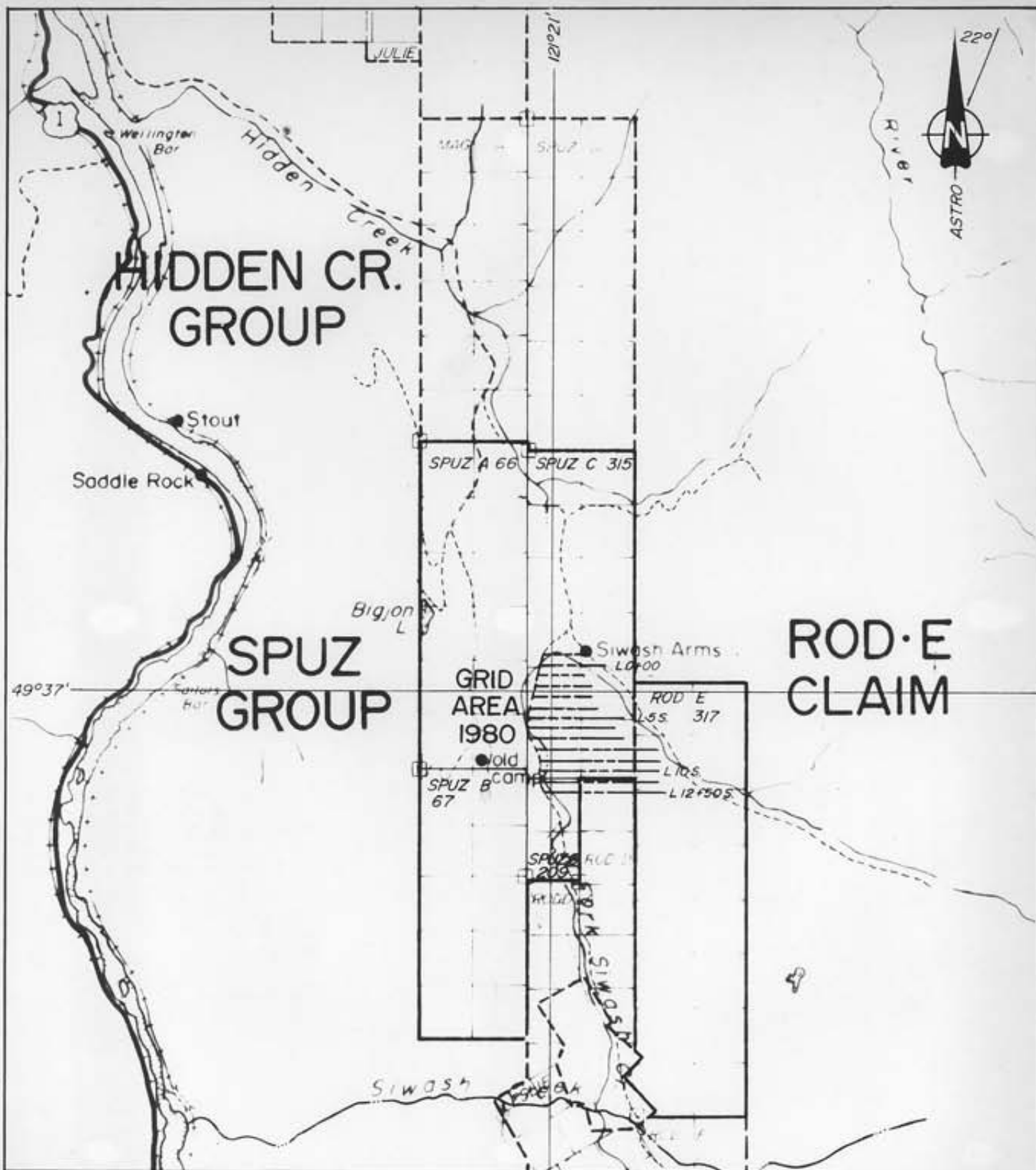
CLAIMS INFORMATION

The Spuz Group consists of four (4) modified grid staked claims; the Rod E mineral claim is an ungrouped modified grid staked claim. All are located in the New Westminster Mining Division, and plotted on Mineral Claim Map M92H/11W. Titles are held by Aquarius Resources Ltd., of Vancouver, B. C. See table for details.

NAME	UNITS	GROUP	REC. NO.	ANNIVERSARY	EXPIRY*
Spuz A	10	Spuz	66	October 29	1990
Spuz B	12	Spuz	67	October 29	1990
Spuz G	2	Spuz	209	June 13	1990
Spuz C	12	Spuz	315	August 11	1990
Rod E	16	----	317	August 11	1982

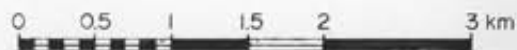
\* includes assessment work applied for by this report





**AQUARIUS RESOURCES LTD.**

SPUZ GROUP & ROD E CLAIM  
 Spuzzum B.C. N.T.S. 92H/IIW.  
 New Westminster Mining Division



SCALE 1:50,000

CLAIMS MAP

Figure 2



Cochrane Consultants Limited  
 880 Delta St. Delta B.C. V4K 1T8 660-2277

K.U. SEPT. 80

GENERAL SETTING

The claims lie in the Northern Cascade Mountain Range which is a rugged upland surface noted for steepness, thick bush and winter rain and freshettes. Elevations in the general area range from 65 m. at Yale to 1460 m above sea level on the Anderson River Mountain east of the claims. Variation in topography within the claims boundaries is fairly modest since the claims lie along a north trending unnamed ridge immediately east of the Fraser River.

The Spuz Group and Rod E claim straddle the Coquihalla Serpentine band and Hozameen Fault which marks the west boundary of the Methow Grabben, a major crustal feature separating Upper Jurassic Ladner Group slates on the east from Paleozoic Hozameen Group cherts and metavolcanic rocks on the west. The grabben structure runs from Northern Washington State to Boston Bar, B. C., a distance of over 200 km.





These claims comprise a 6 km section of a 43 km series of claims on the Coquihalla Gold Belt, a major feature which is the control axis of five (5) former producers, and Carolin Mines Ltd.'s Idaho Zone, nearing production, and located some 13 km to the south.



FIELD PROCEDURES

Commencing at the base camp, and using the South Fork Siwash Creek Road as a baseline, lines were blazed and flagged at 100 m intervals from line 1+00N., to line 12+50S. Soil samples were collected from the "upper B" soil horizon, at 25 m intervals, and placed in grid numbered kraft paper bags. At the end of each day the samples were air dried at camp. Upon completion of the survey the samples were boxed and delivered to Min-En Labs Ltd., of North Vancouver, B. C., by four wheel drive truck, where they were analyzed for gold. Min-En Labs uses an atomic adsorption technique and results are reported in parts per billion gold. Results were sent to Cochrane Consultants Ltd., and plotted on Figure 53-57 with the aid of field notes and maps.



RESULTS

Values ranged from less than five parts per billion gold (less than detection limit), to a high of 120 parts per billion gold in soils. Values are plotted on Figure 53-57, and contoured at the previously established intervals of 5 to 15 p.p.b., or background, 15 to 45 p.p.b., or above background, 45 to 75 p.p.b. or weakly anomalous, and greater than 75 p.p.b. or anomalous.

Respectfully submitted



A circular professional seal for the Province of British Columbia. The outer ring contains the text "PROFESSION OF ENGINEERS" at the top and "BRITISH COLUMBIA" at the bottom. The center of the seal contains the text "PROVINCE OF" at the top and "COLUMBIA" at the bottom, with "ENGINEER" written in the middle. A handwritten signature is written across the seal.

D. R. Cochrane, P. Eng.,  
September 16, 1980,  
Delta, B. C.



APPENDIX I

ASSESSMENT WORK DETAILS

Mr. J. Stewart, supervisor, various dates July 1 to July 25, 1980, 7 days at \$150/day .....	\$ 1,050.00
Fieldperson, July 2 to July 25, 1980 10 days at \$100/day .....	1,000.00
Fieldperson, July 1 to July 24, 1980 10 days at \$100/day .....	1,000.00
D. R. Cochrane, P. Eng. 1 1/2 days at \$300/day .....	450.00
Min-En Labs Ltd., 543 soil samples analyzed for gold at \$4.85/sample .....	2,633.55
Food and Accomodation, 27 man days at \$22/day .....	594.00
Vehicle Expenses, 4 x 4, 7 days at \$27.50/day. 4 x 4, 10 days at \$27.50 .....	192.50 275.00
840 km at \$0.18/km .....	151.20
Soil Sample Bags, 550 at \$59/1000 .....	32.45
Drafting, 49 hours at \$18.25/hour .....	894.25
Typing, 6 1/2 hours at \$12/hour .....	78.00
Reproduction, collating, binding, etc.....	<u>129.00</u>
Total .....	\$ 8,479.95

Cont'd...



APPENDIX I (cont'd)

ASSESSMENT WORK DISTRIBUTION

Applied to the Spuz Group .....	\$ 6,389.60
Applied to the Rod E Claim .....	<u>1,796.45</u>
Total work filed August 11, 1980 .....	\$ 8,186.05

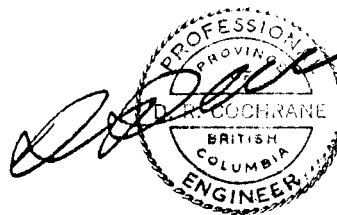


APPENDIX II

CERTIFICATE

I, Donald Robert Cochrane of the Municipality of Delta, British Columbia, do hereby certify that:

1. I am a consulting geological engineer with an office at 4882 Delta Street, Delta, B. C.
2. I am a graduate of the University of Toronto (1962) with a degree in Applied Geology (B.A.Sc.) and a graduate of Queen's University (1965) with a Master of Science Degree in Geological Sciences (Engineering).
3. I have practiced my profession continuously since graduation while being employed by such companies as Noranda Exploration Co. Ltd., Quebec Cartier Mines, and Meridian Explorations Syndicate. I have been in private independent practice since 1969.
4. I have no interest, either direct or indirect in the properties or securities of Aquarius Resources Ltd., nor do I expect to acquire any such interest.
5. I am a member of good standing of the Association of Professional Engineers (A.P.E.) of the Province of British Columbia, and also a member of the A.P.E. in the province of Ontario, Saskatchewan, Alberta and the Yukon Territories.



D. R. Cochrane, P. Eng.,  
September 16, 1980,  
Delta, B. C.





Area: <b>N.Fork Siwash</b>	Claims: Spuz A, B, C, G, Rodd A, Rod D, E.	Overlays:
Legend:	N.S. No Sample Note: Samples from "B" Soil Horizon.	TITLE BLOCK, ROADS, DRAINAGE & GRIDS TOPOGRAPHY - 25m interval CLAIMS (Unit/Claim) GEOCHEMICAL DATA (Au, p.p.b.) GEOCHEMICAL CONTOURS
<ul style="list-style-type: none"> <li>○ Station (Brunton &amp; Chain)</li> <li>⊙ Station (Transit &amp; Chain)</li> <li>X Soil Sample Station</li> <li>—+— Cut Line &amp; Station</li> <li>== Road - 4 X 4, Cat.</li> </ul>	<ul style="list-style-type: none"> <li>15 Contour Interval</li> <li>45</li> <li>75</li> </ul>	


**AQUARIUS RESOURCES LTD.**
**Spuz Project** New Westminster Mining Division  
**Spuzzum, British Columbia.** N.T.S. 92H/11 W.

Scale 1:5,000 (1" = 416.6)

*Topo by Pacific Survey Corp., 1977, from photos 1972. Datum G.S.C. Trood P.K.C., Sept. 1978. Claims, grids, & survey stations from various Company plans. Date of this map: Revised: P.K.C. Aug. /79. K.U. Sept. /80.*
**GEOCHEMICAL DATA (Au, p.p.b.)**  
**GEOCHEMICAL CONTOURS (Au, p.p.b.)**
**Figure 53**  
**57**

**Cochrane Consultants Limited**  
 4882 Delta St., Delta, B.C. V4K 2T8 948-9221
