

Geochemical Assessment Report

on portions of the

**Last Group
& Hidden Creek Group**

located 5km East of Spuzzum, B. C.
in the New Westminster Mining Division, B. C.

N.T.S. 92H/West Half

Latitude 49° 40' N., Longitude 121° 22' W.

Field Work Between June 12 and June 27, 1980
and July 14 and July 18, 1980

on behalf of

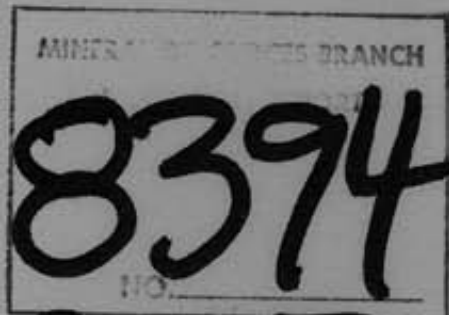
AQUARIUS RESOURCES LTD.

of

Vancouver, B. C.

Report by

D. R. Cochrane, P. Eng.,
September 3, 1980
Delta, B. C.



PART
2 of 2
1



Cochrane Consultants Limited
4882 Delta St., Delta, B.C. V4K 2T8 946-9221
Geotechnical Consulting / Exploration Services

geology
geophysics
geochemistry

Table of Contents

	Page
A. INTRODUCTION	1
B. LOCATION AND ACCESS	2
C. CLAIMS INFORMATION	3
D. GENERAL SETTING	5
E. FIELD PROCEDURES	7
F. DISCUSSION OF RESULTS	10

Figures

1.	Location Map	Report Body
2.	Claims Map	" "
52.	Geochemical Data	Map Pocket

Appendices

I	Assessment Work Details
II	Certificate



A. INTRODUCTION

The Last, and Hidden Creek Groups lie between the Fraser and Anderson Rivers, in the Northern Cascade Mountains, due east of the hamlet of Spuzzum, B. C. Exploration in this area has centered on the Coquihalla Gold Belt, and has been an ongoing program by Aquarius Resources Ltd. since 1976.

This years geochemical survey on the Last Group, tied the "Hidden Creek grid" to the south, into the "Gilt Creek grid" to the north, and more precisely located the latter by means of a tie line.

Geochemical work on the Hidden Creek Group consisted of fill-in line cutting and soil sampling from the Hidden Creek grid south to the Spuz grid.

This report was prepared for assessment work submission and details are set out in Appendix I.

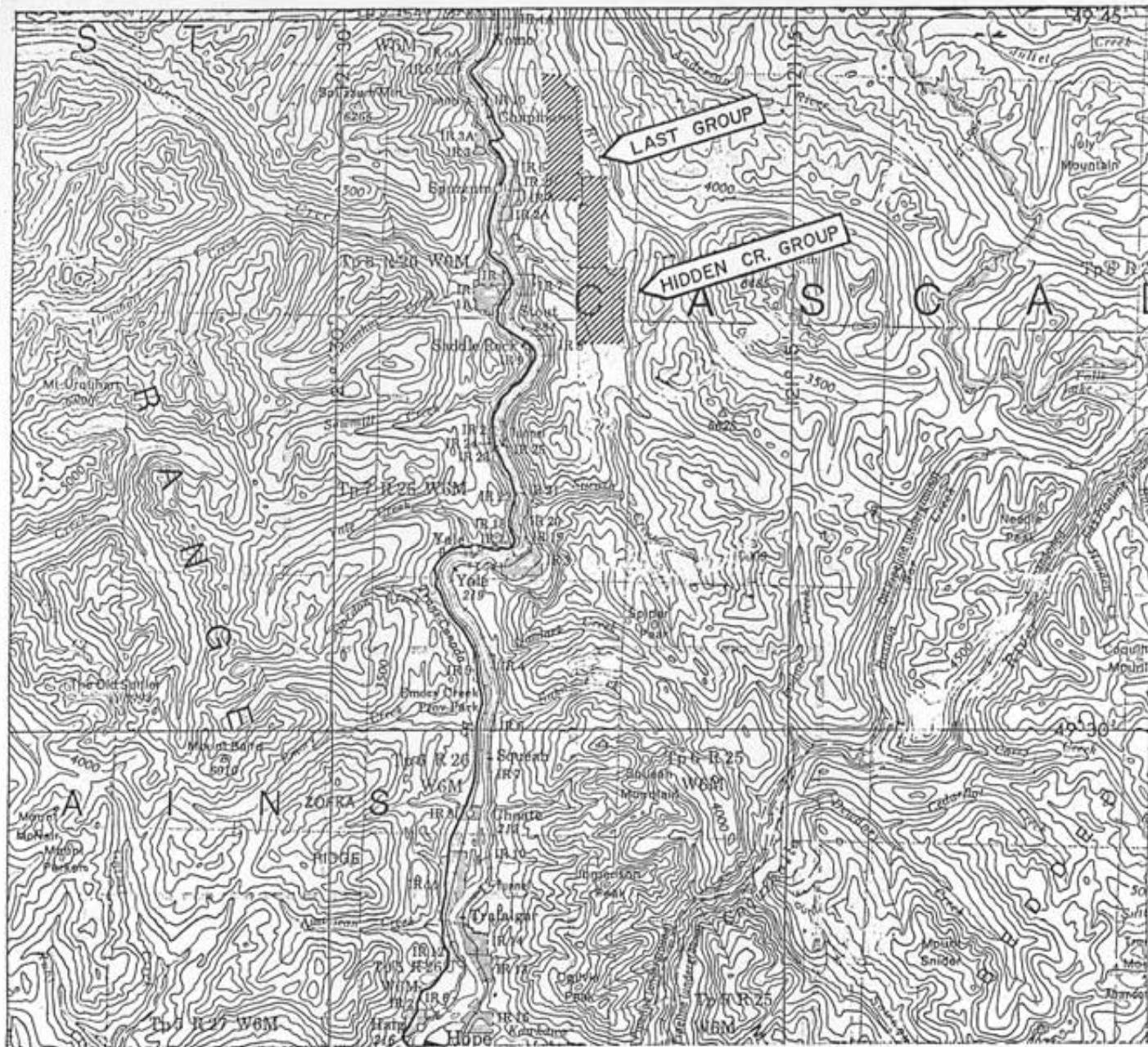


B. LOCATION AND ACCESS

The Last and Hidden Creek Groups are located between the Fraser and Anderson Rivers, immediately east of Spuzzum, 40 km north of Hope, B. C. Access is from the Gilt Creek, Hidden Creek logging road which departs highway No. 1 just north of the Alexandra Bridge in the Fraser Canyon. Access from the logging roads to the remainder of the claims area is by foot.

The latitude is $49^{\circ} 40' N.$, longitude $112^{\circ} 22' W.$, (see figure 1).





AQUARIUS RESOURCES LTD.

Last & Hidden Creek Groups

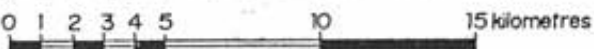
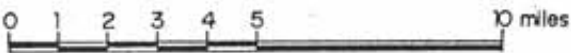
New Westminster M.D.

Figure 1

From 92H - Hope Sheet

Location Map

Scale : 1 to 250,000 or 1 inch equals approx. 4 miles.



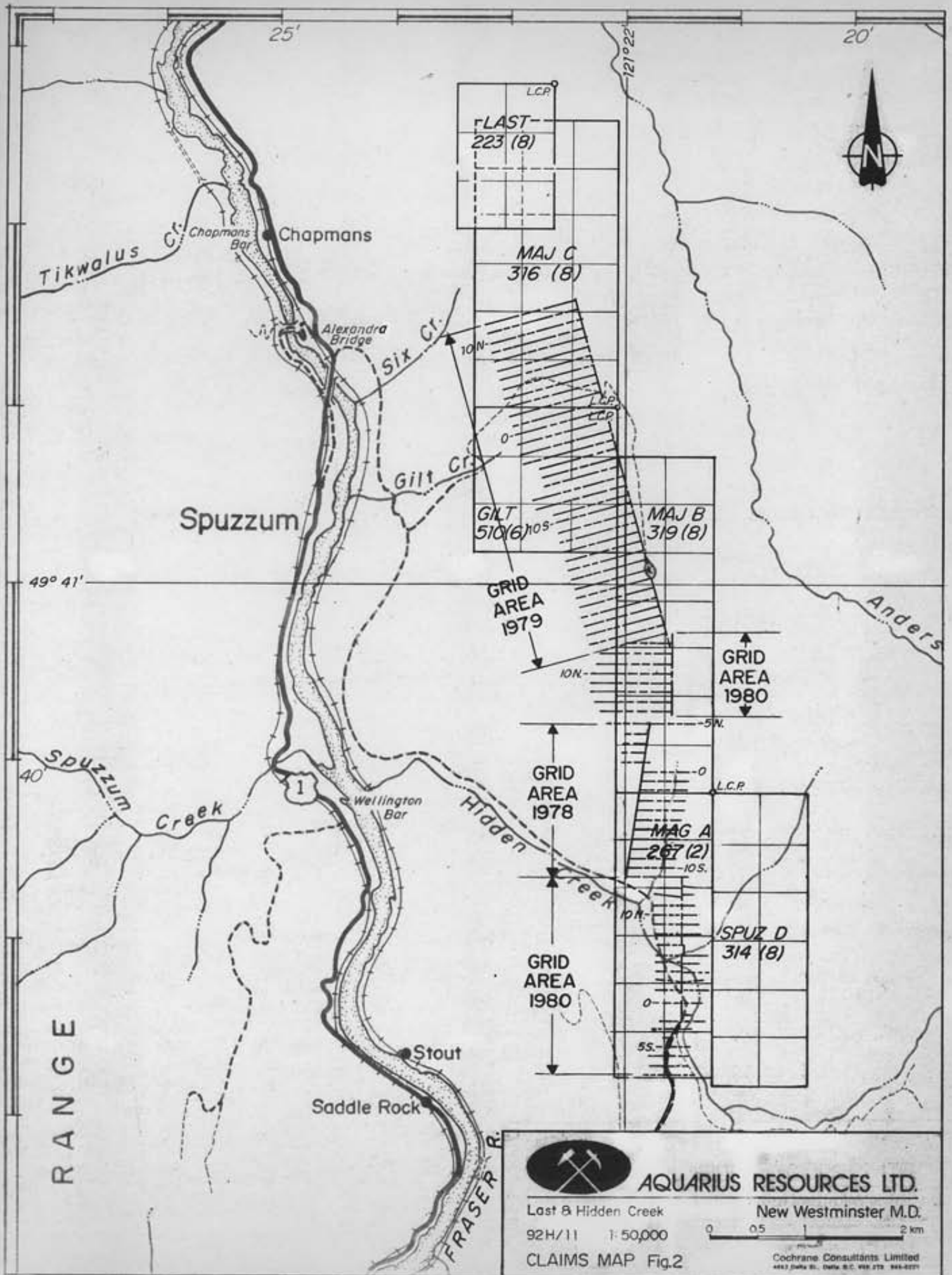
C. CLAIMS INFORMATION

The Last Group comprises three modified grid staked claims located in the New Westminster Mining Division and owned by Aquarius Resources Ltd., of Vancouver, B. C. Details are set out in the following table:

CLAIM NAME	UNITS	RECORD NO.	ANNIVERSARY DATE	EXPIRY DATE *
Last	6	223	August 22	1983
Maj C	18	316	August 11	1982
Maj B	14	319	August 11	1983

* includes assessment work credits applied for by this report.





RANGE



AQUARIUS RESOURCES LTD.

Last & Hidden Creek

New Westminster M.D.

92H/11 1:50,000



CLAIMS MAP Fig.2

Cochrane Consultants Limited
4617 Delta St., Delta, B.C. V9B 2T9 945-2271

The Hidden Creek Group includes two modified grid staked claims contiguous, and to the south of, the Last Group. Both claims are located in the New Westminster Mining Division, and owned by Aquarius Resources Ltd., of Vancouver, B. C. See following table:

CLAIM NAME	UNITS	RECORD NO.	ANNIVERSARY DATE	EXPIRY * DATE
Mag A	12	267	February 16	1984
Spuz D	12	314	August 11	1984

* includes assessment work credits applied for by this report.



D. GENERAL SETTING

The Last, and Hidden Creek Groups of mineral claims straddle the Hozameen Fault; the central axis of the fault lies along the western margin of the Methow Graben, a major geological feature of the Northern Cascade Range of Washington and British Columbia (McKee, 1972). The principal structural and lithological element is a north trending sheared serpentine band which separates the younger (mid Jurassic) Ladner Slate Group to the east of the Fault from the older (Paleozoic) Hozameen Group rocks, and an altered ultrabasic and basic rock complex of unknown age. The gold occurrences along the belt are of various types including; shear zone, vein, breccia and replacement varieties, with some deposits exhibiting overlapping characteristics. Most of the former production was from shear zone and vein type deposits but current exploration attention is biased towards deposits with larger dimensions such as breccia and replacement types since these are amenable to large tonnage, low cost, mechanized mining techniques.



The majority of the gold occurrences discovered to date along the Coquihalla Gold Belt lie within, or close to, the Hozameen Fault system and within either altered basic rocks, or the Ladner Group slates. These include the Monument, located 11 kilometres south of the Last Claim, and the Idaho Zone of Carolin Mines Ltd., nearing production and situated some 26 kilometres south of the Last Claim.



E. FIELD PROCEDURES

1. LAST GROUP GRID

A baseline was compassed and chained true north from line 5 N., station 2+50 E., on the Hidden Creek grid, to line 24 S., on the baseline of the Gilt Creek grid. Cross lines were run true west from the baseline at 100 m spacing. Soil samples were collected firstly at 25m intervals (lines 6+00 N., and 7+00 N.,) and thence at 50 m intervals along the cross lines.

To more accurately control the Gilt Creek grid, tie line 6+00 W., was blazed and flagged at azimuth 345° true from existing line 10+00 S., to line 4+00 N., concurrent with the line cutting/soil sampling survey. In addition, line 18+00 S., was extended to 10+00 W., and line 10+00 S., extended to 11+00 W., on the Gilt Creek grid.



2. HIDDEN CREEK GROUP GRID

Using the Hidden Creek logging road as location, a baseline was chained and cut southerly from 0+00 to 13+00 S., cross lines 100 m apart were cut, flagged and soil sampled east-west at 25 m intervals. From 0+00 a baseline was likewise chained and cut northerly from 2+00 N., to 14+00 N., cross lines 100 m apart were cut, flagged, and soil sampled at 25 m intervals east-west. The road, and or baseline was likewise soil sampled at 25 m intervals.



All soil samples were collected, using hand tools, from the "B" soil horizon. Samples were placed in grid numbered kraft paper bags, air dried at the Siwash Arms Camp, then boxed and shipped to Min-En Labs Ltd., of North Vancouver, by four wheel drive truck.

The samples were analyzed for gold by aqua regia extraction and Atomic Adsorption technique and reported in parts per billion. Results were mailed to Cochrane Consultants' office, in Delta, B. C., and plotted, with the aid of field notes and maps, at a scale of 1:5000.



F. DISCUSSION OF RESULTS

1. LAST GROUP GRID

A total of 159 soil samples were collected on the Last Group grid, the highest sample being 505 parts per billion gold on line 9+00 N., station 2+00 W., the lowest less than 5 parts per billion, or below detection limit.

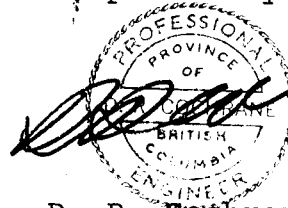


2. HIDDEN CREEK GRID

A total of 548 soil samples were collected on the Hidden Creek grid and analyzed for gold. The highest value of 1500 parts per billion is located on line 14+00 N., station 2+00 W. Two significantly high samples were: 890 parts per billion gold on line 7+00 N., station 2+50 W., and 950 parts per billion gold on line 4+00 N., station 1+50 W., the lowest value being less than detection limit (less than 5 parts per billion).

Previous experience on the Coquihalla Gold Belt, and statistical information has illustrated values from 15 to 45 parts per billion gold to be weakly anomalous, values from 45 to 75 parts per billion gold moderately anomalous, and 75 parts per billion gold and greater as anomalous. Values are plotted on Figure 52 together with previous years grids and values, and contoured at the intervals mentioned.

Respectfully submitted



D. R. Cochrane, P. Eng.,
September 3, 1980,
Delta, B. C.



APPENDIX I

ASSESSMENT WORK DETAILS

1. LAST GROUP

Mr. Jon Stewart, supervisor, July 14 to 18, 1980 5 days at \$150/day	\$ 750.00
Fieldperson, July 14 to 18, 1980 5 days at \$100/day	500.00
Fieldperson, July 14 to 18, 1980 5 days at \$100/day	500.00
Min-En Labs Ltd., 159 soils analyzed for Au	771.15
Accommodation, 15 man days at \$22/man day	330.00
Vehicles, 2 4 X 4's, 5 days at \$27.50/truck/day	275.00
Professional Engineer, 1 day at \$300/day	300.00
Draftsperson, 31.5 hours at \$17.50/hour	551.25
Typist, 4.5 hours at \$12.00/hour	54.00
Reproduction, binding, collating	105.90
	<hr/>
TOTAL	\$ 4,137.30



2. HIDDEN CREEK GROUP

Mr. Jon Stewart, supervisor, June 12 to 27, 1980 14 days at \$150/day	\$ 2,100.00
Fieldperson, June 12 to 27, 1980, 14 days at \$100/day	1,400.00
Fieldperson, June 12 to 27, 1980, 14 days at \$100/day	1,400.00
Min-En Labs Ltd., 548 soil samples analyzed for Au	2,657.80
Accomodation, 42 man days at \$22/man day	924.00
Vehicles, 2 4 X 4's - 14 days at \$27.50/day/truck	770.00
980 km at \$0.18/km	176.40
Professional Engineer, 1.5 days at \$300/day	450.00
Draftsperson, 44 hours at \$17.50/hour	770.00
Typing and office work, 8.5 hours at \$12/hour	102.00
Reproduction, binding, collating	214.15
	<hr/>
TOTAL	\$ 10,964.35

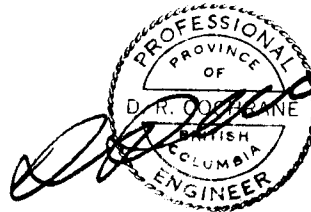


APPENDIX II

CERTIFICATE

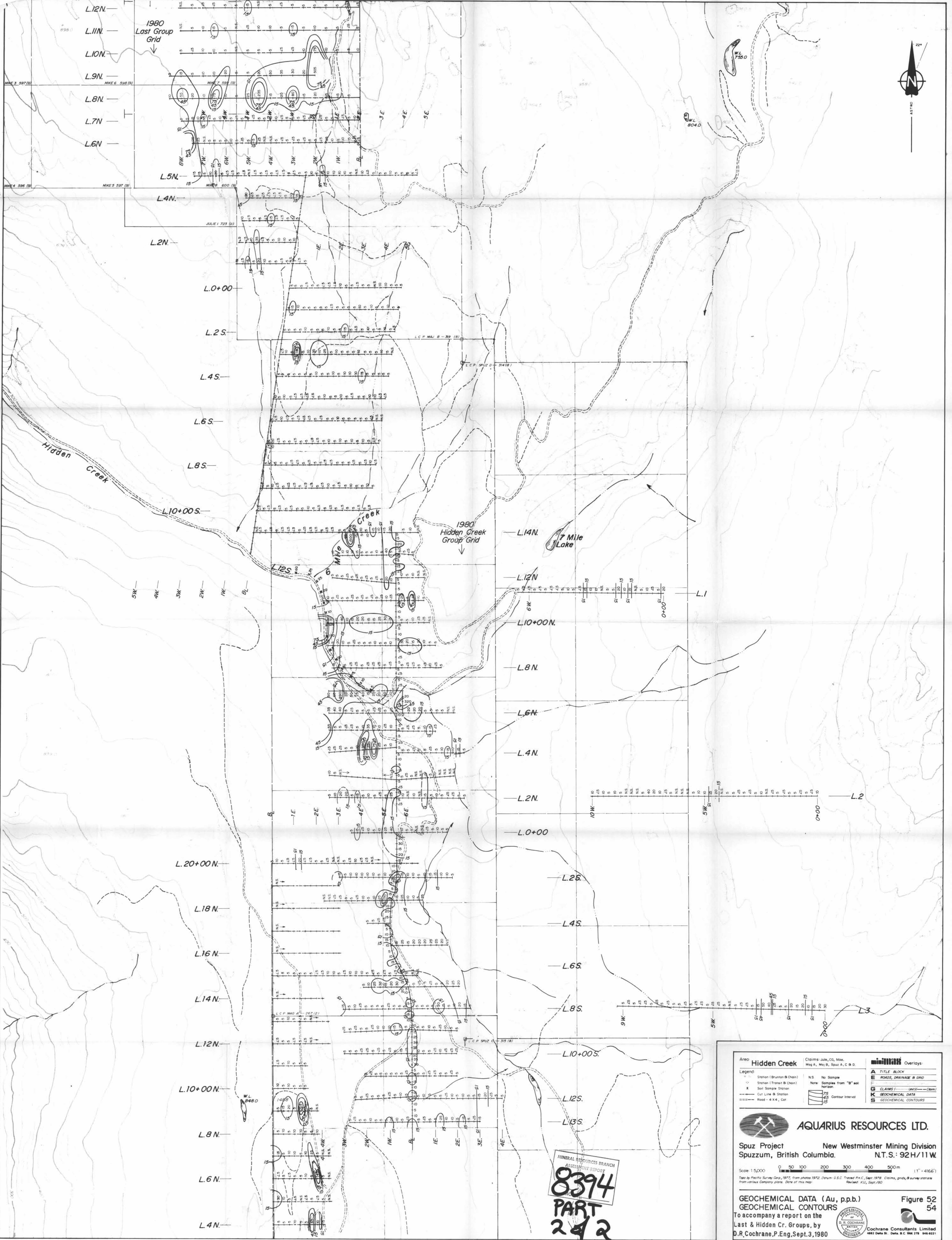
I, Donald Robert Cochrane of the Municipality of Delta, British Columbia, do hereby certify that:

1. I am a consulting geological engineer with an office at 4882 Delta Street, Delta, B. C.
2. I am a graduate of the University of Toronto (1962) with a degree in Applied Geology (B.A.Sc.) and a graduate of Queen's University (1965) with a Master of Science Degree in Geological Sciences (Engineering).
3. I have practiced my profession continuously since graduation while being employed by such companies as Noranda Exploration Co. Ltd., Quebec Cartier Mines, and Meridian Explorations Syndicate. I have been in private independent practice since 1969.
4. I have no interest, either direct or indirect in the properties or securities of Aquarius Resources Ltd., nor do I expect to acquire any such interest.
5. I am a member of good standing of the Association of Professional Engineers (A.P.E.) of the Province of British Columbia, and also a member of the A.P.E. in the province of Ontario, Saskatchewan, Alberta and the Yukon Territories.



D. R. Cochrane, P. Eng.,
September 3, 1980,
Delta, B. C.





Area: Hidden Creek Claims July, '05, Mile, May A, May B, Spuz A, C & D.

Legend:

- Station (Brunton & Chain)
- Station (Transit & Chain)
- Soil Sample Station
- Cur Line @ Station
- Road - 4 x 4, Car
- No Sample
- Samples from "B" soil horizon
- Contour Interval
- 75
- 45
- 15

Overlays:

- TITLE BLOCK
- ROADS, DRAINAGE & GRID
- CLAIMS
- GEOCHEMICAL DATA
- GEOCHEMICAL CONTOURS

AQUARIUS RESOURCES LTD.

Spuz Project New Westminster Mining Division
Spuzzum, British Columbia. N.T.S.: 92H/11W

Scale 1:5,000 0 50 100 200 300 400 500m (1" = 4166')

Geochemical Data (Au, p.p.b.)
GEOCHEMICAL CONTOURS
To accompany a report on the
Last & Hidden Cr. Groups, by
D.R. Cochrane, P.Eng., Sept. 3, 1980

Figure 52
54

Cochrane Consultants Limited
4822 Data St. Delta, B.C. V9A 2T8 565-2221

MINERAL RESOURCES BRANCH
ASSESSMENT REPORT
8394
PART
242