

GEOLOGICAL REPORT

SILVER FRACTION

Record No. 1841(9)

STEWART AREA

British Columbia

Skeena Mining Division

NTS 104 B/1E

lat. 56° 06'W, long. 130° 02'W

Owner:

Ulrich Kretschmar
R.R. #1
Severn Bridge, Ontario
POE 1N0

Author:

Ulrich Kretschmar
R.R. #1
Severn Bridge, Ontario
POE 1N0

Operator:

HIMCO
3301 C St. #505
Anchorage, Alaska
99503

Date Submitted:

October 18th, 1980

MINERAL RESOURCES BRANCH
ASSESSMENT REPORT

8524

TABLE OF CONTENTS

INTRODUCTION	Page 1
GEOLOGY	Page 1
MINERALIZATION	Page 2
RECOMMENDATIONS	Page 3
STATEMENT OF EXPENDITURES	Page 4
STATEMENT OF QUALIFICATIONS	Page 5

List of Figures

Figure 1	Location Map
Figure 2	Claim Map
Figure 3	Geological Map of Silver Fraction (1:6,000)

INTRODUCTION

The Silver Fraction claim lies south of the southern most of the Silver Lakes between 830 and 1100 meters elevation. Both Cascade Creek and the Big Missouri road transect the claim. The terrain is moderately steep to very steep as on the banks of Cascade Creek. Vegetation cover is thin and patchy consisting of blue spruce and hemlock trees and blueberry bushes as undergrowth.

There are several references to work in the area (e.g. B.C. Minister of Mines Report for 1925, p. A102 regarding the Start adits) but none refers specifically to the adit on the Silver Fraction.

The claim was recorded on September 18, 1979 by Ulrich Kretschmar, R.R. #1, Severn Bridge, Ontario POE 1N0. HIMCO, 3301 C St. #505, Anchorage, Alaska 99503 is the operator. Economic assessment of the property is being carried out, beginning with reconnaissance geological mapping.

GEOLOGY

The Silver Fraction is underlain by a sequence of pyroclastics. The predominant rock type is green lapilli tuff (Unit 1a). Locally fragments are felsic and up to breccia size. Feldspar crystals are common in the vicinity of Cascade Creek. Virtually no bedding can be seen and outcrops are massive.

Interbedded with unit 1a, are two thin units of coarser pyroclastic material. Unit 1b is a heterogeneous purple and maroon lapilli breccia. Fragments are green, maroon and yellowish in colour. They are angular to subrounded in shape and are generally flattened in the plane of bedding. The matrix consists of maroon coloured and hematitic tuff.

Map from NTS sheets 103P + 103O,
104A and 104B
AMS sheets Katchikan +
Bradfield Canal

Drafted by: D. Kretschmar
30 Aug. 1979

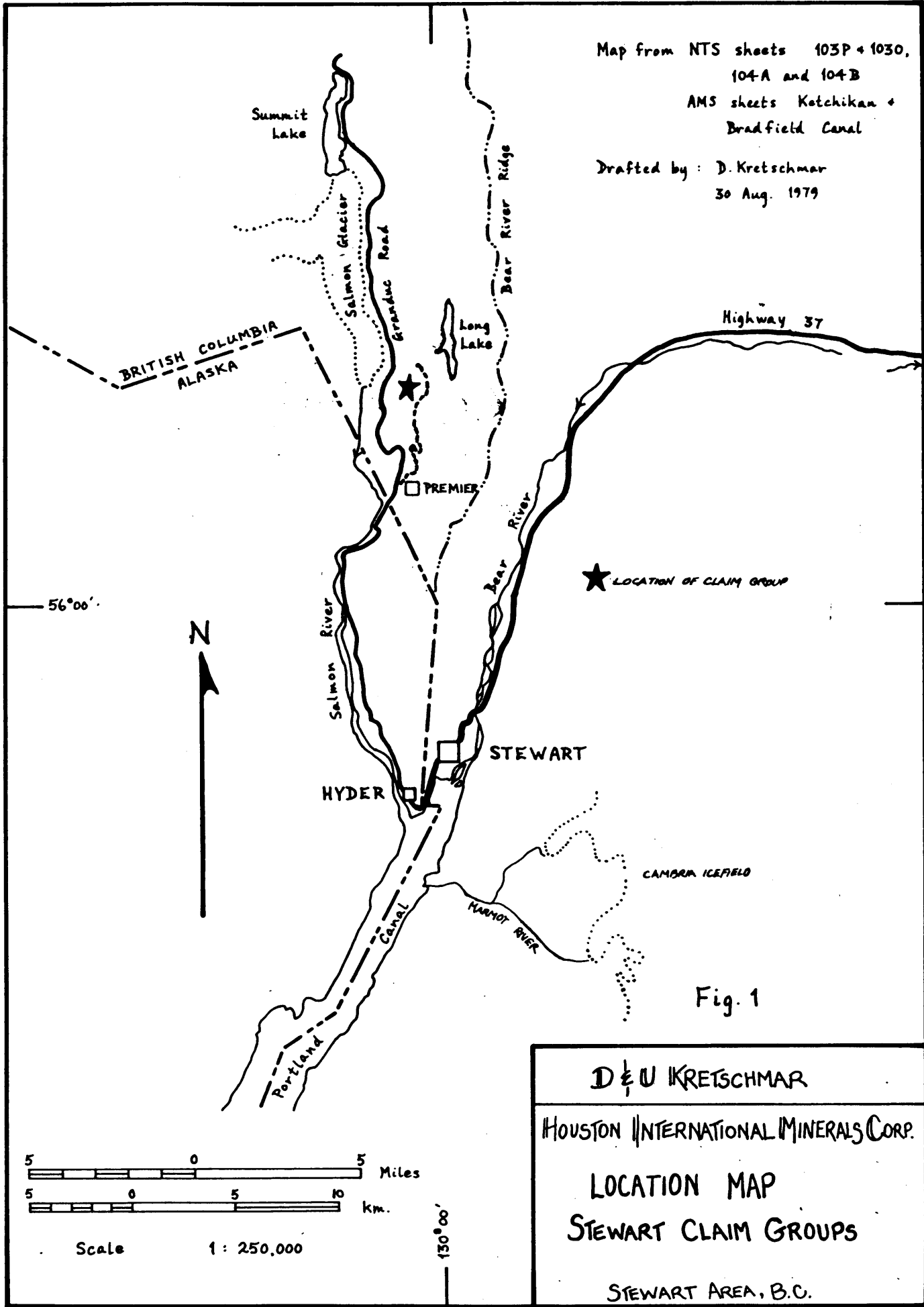
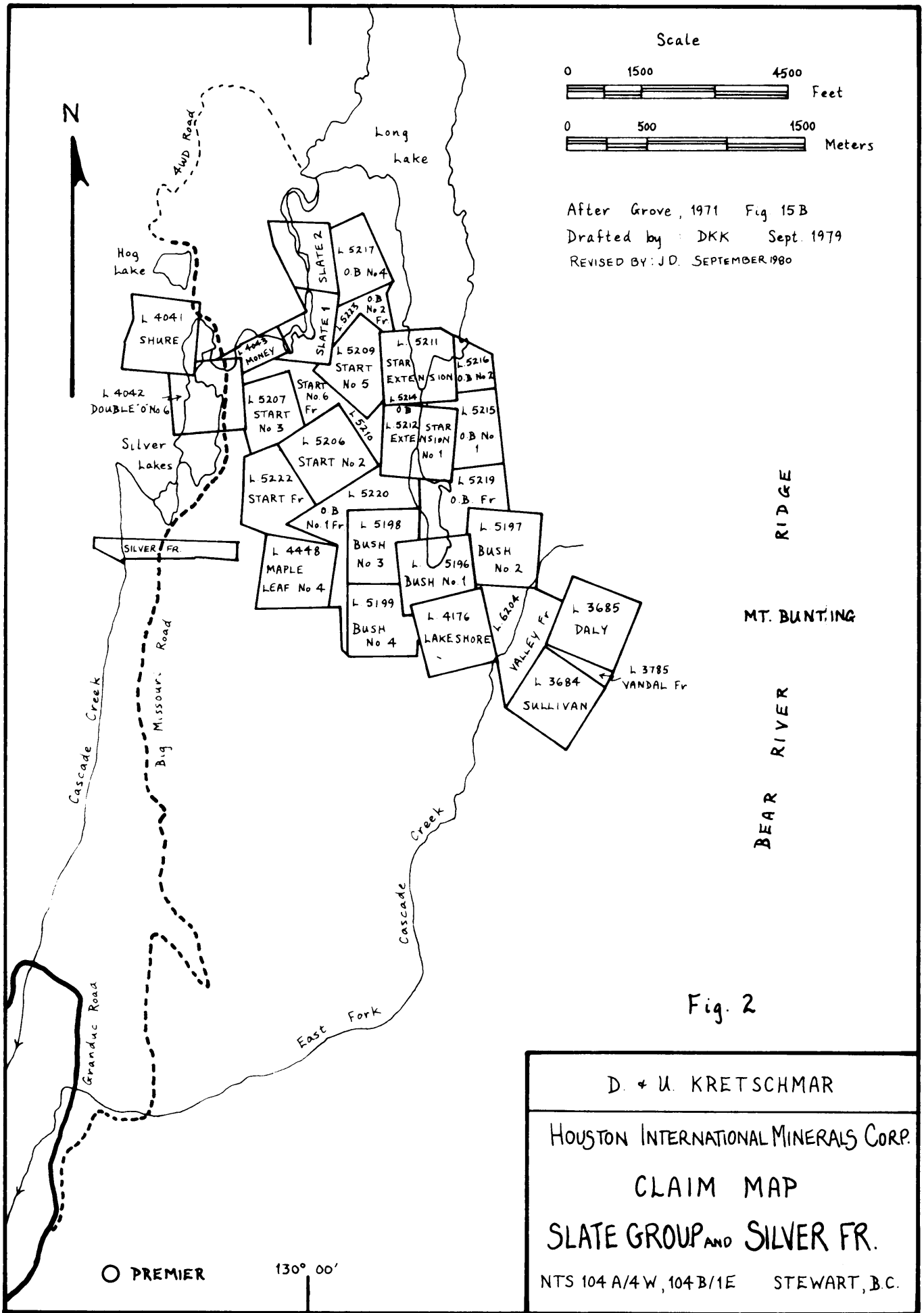


Fig. 1

D & U KRETCHMAR
HOUSTON INTERNATIONAL MINERALS CORP.
LOCATION MAP
STEWART CLAIM GROUPS
STEWART AREA, B.C.

5 0 5 Miles
5 0 5 10 Km.
Scale 1:250,000

130°00'



Scale

0 1500 4500
 Feet

0 500 1500
 Meters

After Grove, 1971 Fig 15B

Drafted by : DKK Sept. 1979

REVISED BY: J.D. SEPTEMBER 1980

RIDGE

MT. BUNTING

BEAR RIVER

Fig. 2

D. & U. KRETSCHMAR

HOUSTON INTERNATIONAL MINERALS CORP.

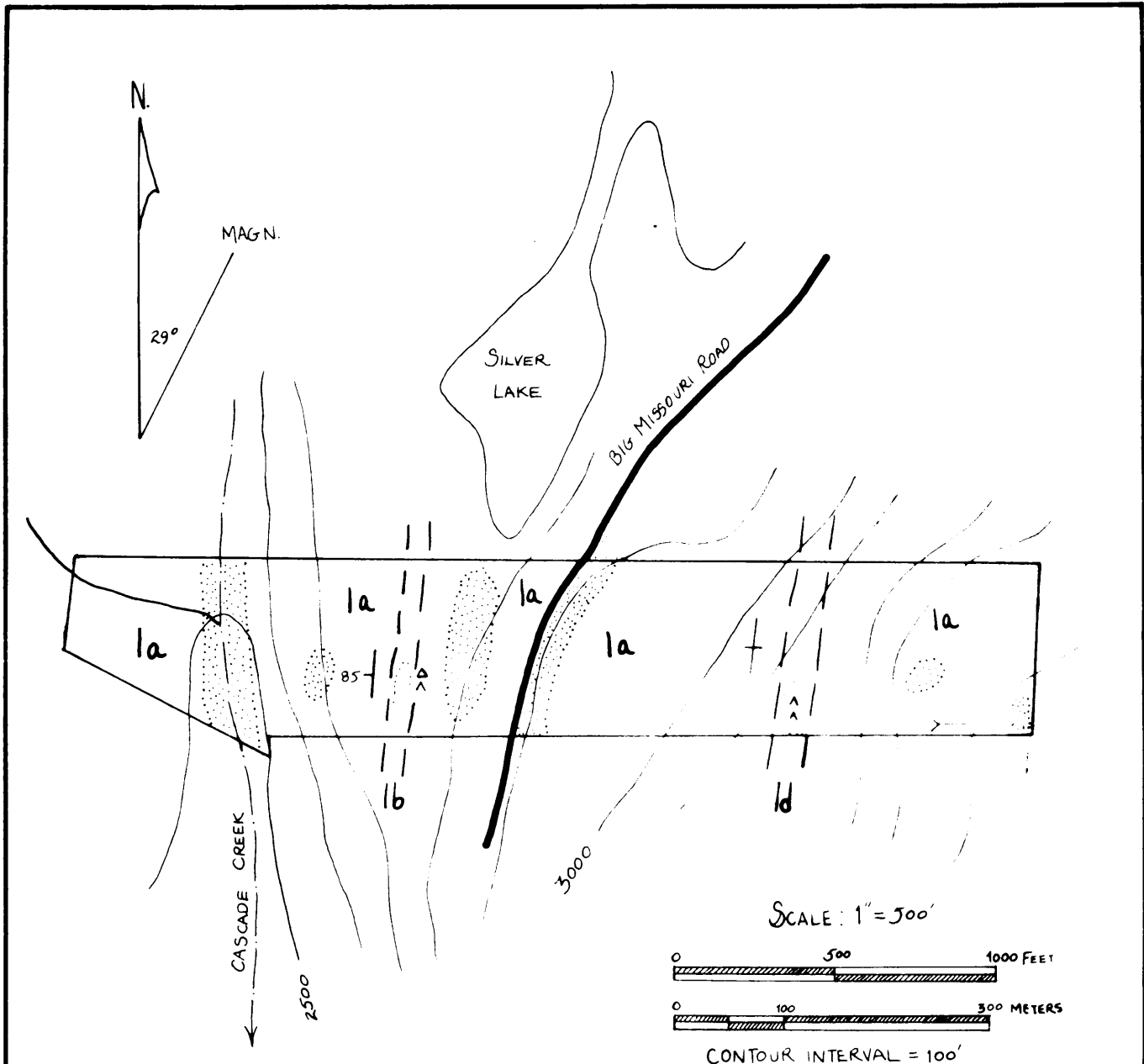
CLAIM MAP

SLATE GROUP AND SILVER FR.

NTS 104 A/4W, 104 B/1E STEWART, B.C.

○ PREMIER

130° 00'



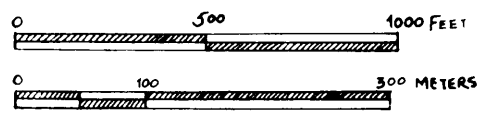
LEGEND

HAZELTON GROUP VOLCANICS

- 1a GREEN FELDSPAR CRYSTAL LAPILLI TUFF
- 1b PURPLE AND MAROON LAPILLI BRECCIA
- 1d WELL BEDDED BRICK RED REWORKED TUFF AND LAPILLI TUFF

- CONTACT
- 85° / STRIKE & DIP OF BEDDING
- └─ ADIT
- TUFF SIZE FRAGMENTAL
- △ LAPILLI SIZE FRAGMENTAL
- △ BRECCIA SIZE FRAGMENTAL

SCALE: 1" = 500'



CONTOUR INTERVAL = 100'

GEOLOGY BY: U. KRETSCHMAR AUGUST 1980
 DRAFTED BY: J. DANIELS OCTOBER 1980

FIG. 3

D & W KRETSCHMAR

HOUSTON INTERNATIONAL MINERALS CORP.
 RECONNAISSANCE GEOLOGICAL MAP
 SILVER FRACTION

NTS 104B/1E
STEWART B.C.

Unit 1d is a well bedded brick red reworked tuff and lapilli tuff sequence. Subangular to rounded lapilli sized fragments occur in a tuffaceous matrix. Graded bedding was observed, but top determinations are not consistent.

All units strike slightly east of north and dip steeply to the west or are vertical. No faults or major structures were seen.

MINERALIZATION

A short (25 meters long) adit was driven on a quartz vein that occurs in green and black andesitic tuff. Pyrite and specks of chalcopyrite and tetrahedrite occur in the quartz vein. No other mineralization was seen.

RECOMMENDATIONS

The property should be mapped in greater detail and thoroughly prospected.

SUMMARY OF EXPENDITURES - SILVER FRACTION

1) Contract Fees: U. Kretschmar	1 day @ \$180.00/day (Aug. 24/80)	\$180.00
2) Commissary:	1 day @ \$ 20.00/day	\$ 20.00
3) Supplies and Equipment:		\$ 33.05
4) Maps, publications:		\$ 5.29
5) Communication:		\$ 4.98
6) Portion of travel expenses: Vancouver to Stewart		\$ 5.34
7) Truck rental and fuel:		\$ 22.50
		<hr/>
	TOTAL	\$271.16

Total expenditure	\$271.00
Withdrawal from PAC	\$ 29.00
	<hr/>
Total applied to claim	\$300.00

D. Kretschmar

STATEMENT OF QUALIFICATIONS

I, Ulrich Kretschmar, of R.R. #1, Severn Bridge, Ontario POE 1N0
certify that:

1. I am a mining exploration geologist and Fellow of the Geological Association of Canada.
2. I am a graduate of McMaster University (B.Sc., 1966; M.Sc., 1968), McGill University and University of Toronto (Ph.D. 1973)
3. I have worked as an exploration geologist in Canada and Alaska for Cominco Ltd.; Watts, Griffis and McQuat Ltd.; Resource Associates of Alaska and others.
4. I worked on the Silver Fraction on August 24, 1980.

U. Kretschmar
for Ulrich Kretschmar, Ph.D.

October 18th, 1980

Premier, B.C.