



GRÄNGES EXPLORATION AB
CANADIAN DIVISION

GEOCHEMICAL REPORT

ON

"T" AND "U" CLAIMS

OMINECA MINING DIVISION

FAWNIE NOSE AREA

LATITUDE: 53° 17'

LONGITUDE: 125° 05'

N.T.S. 93 F/6 E

Owner and Operator

Granges Exploration Aktiebolag
1110 - 625 Howe Street
Vancouver, B. C.
V6C 2T6

MINERAL RESOURCES BRANCH
ASSESSMENT REPORT

8550

Date of Work: June 23rd - July 15, 1980

Dated at Vancouver, B. C.
October 14, 1980

Author
G. (P. Eng.)

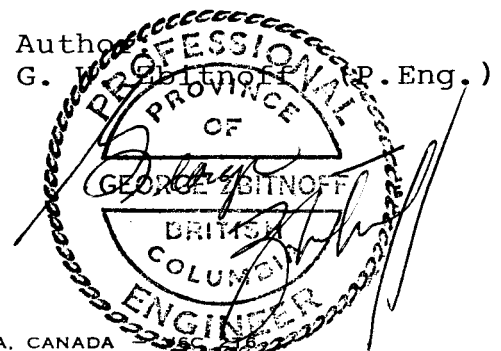
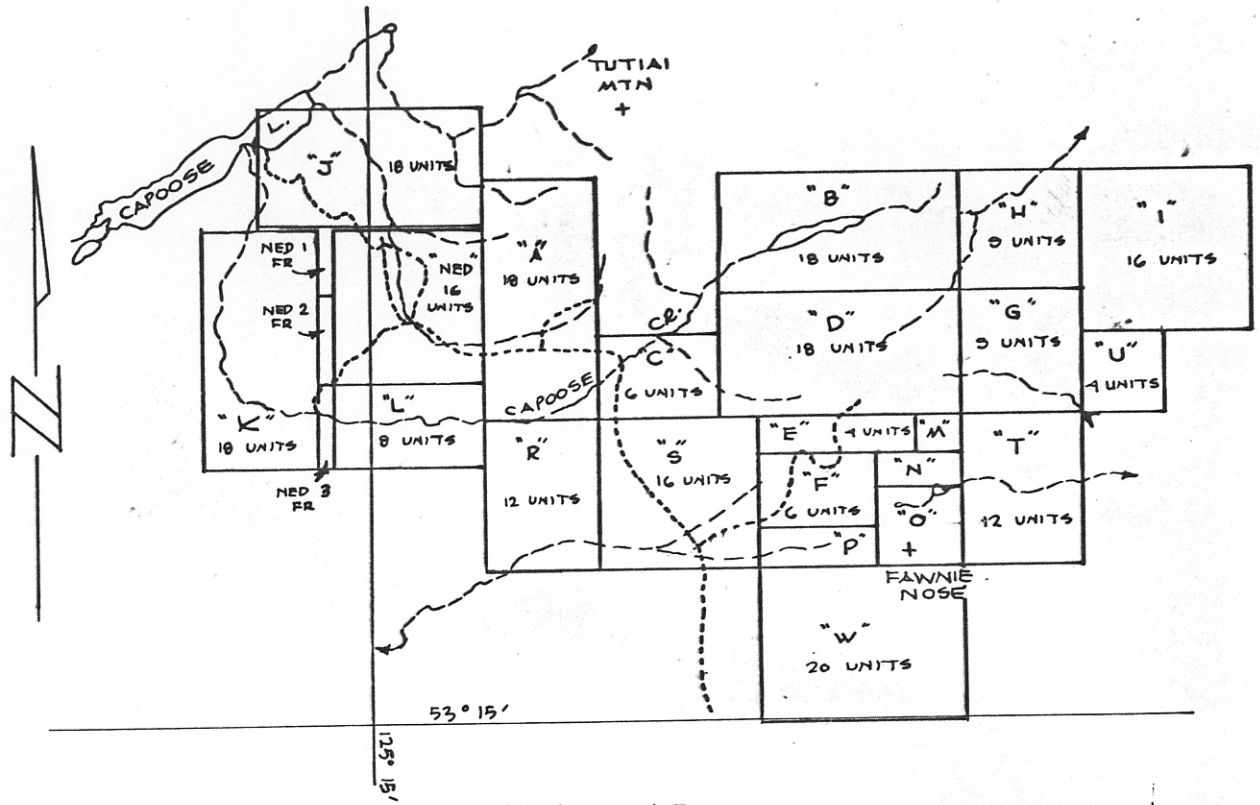


TABLE OF CONTENTS

Location Map	front
Introduction	1
Claims	1
Location and Access	1
Geology	2
Survey Grid	3
Geochemical Survey	3
Discussion of Results	4
Conclusion	5
Recommendations	5
Expenditures	5
Statement of Author's Qualifications .	6

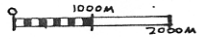
ENCLOSURES

Map 1	Geochemical Survey for lead, zinc, silver and arsenic. "T" Claim.	Scale 1:4000
Map 2	Geochemical Survey for copper and molybdenum. "T" Claim.	Scale 1:4000
Map	Geochemical Survey for molybdenum, copper, lead, zinc, silver and arsenic. "U" Claim.	Scale 1:5000

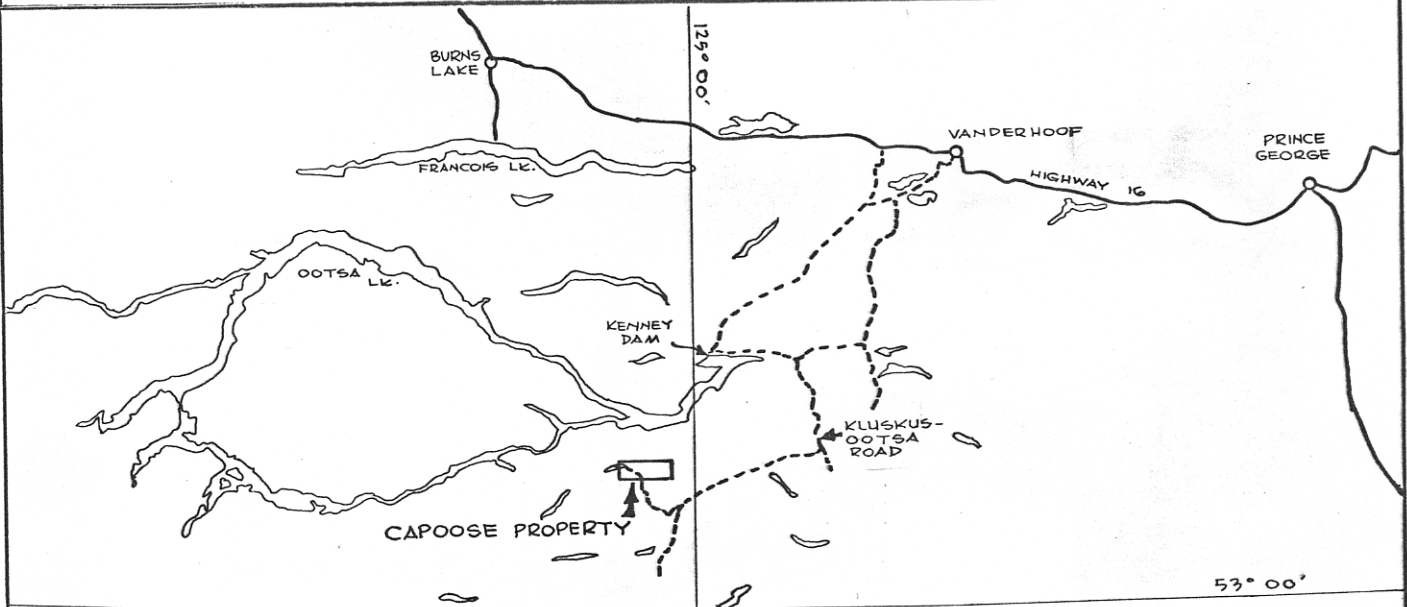


CLAIM MAP

SCALE 1:100,000

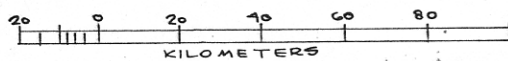


N.T.S. No 93 F-G



LOCATION MAP

SCALE 1:1,300,800



INTRODUCTION

During the period of June 23rd to July 15, 1980, a four to five man crew worked the "T" and "U" claims for Granges Exploration Aktiebolag. This program was completed under the direction of Ken Taylor and supervised by G. W. Zbitnoff P. Eng.

The exploration program consisted of running grid lines across the claims at 100 meter intervals, and collecting geochemical soil samples at every 100 meter intervals along the lines. These samples were assayed for arsenic, silver, lead, zinc, copper and molybdenum.

This survey was conducted on behalf of Granges Exploration Aktiebolag, holders of the claims, in an effort to locate zones of interest for further detailed investigation.

CLAIMS

The claims covered by this report and the relevant dates are as follows:

<u>Claim Name</u>	<u># of Units</u>	<u>Tag #</u>	<u>Record #</u>	<u>Date of Record</u>
"T"	12	29206	2117	Sept. 14, 1979
"U"	4	28090	2719	April 18, 1980

LOCATION AND ACCESS

The "T" and "U" claims are situated approximately 468 km north north-west of Vancouver, British Columbia. The claims lie approximately 714 km south south-east of Burns Lake, British Columbia, which was the helicopter supply point for the work program.

The claims are located $53^{\circ} 17'$ and longitude $125^{\circ} 05'$ in the Omineca Mining Division.

Access is via helicopter from Burns Lake. Large amounts of equipment can be moved by road via the Kluskus-Ootas road from Vanderhoof for a distance of 150 km where it is joined by the Capoose Lake road. The equipment can then be shuttled via helicopter to the claims, a distance of 10 to 15 km, to the north north-east.

The claims lie on the east flank of the Fawnie Range. The elevation on the claims range from 1625 m in the south-east corner of the "T" claim to 1850 m along the western boundry of the "T" claim. The "U" claim's elevation varies from 1655 m to 1750 m from the south-west corner to the east boundry. Much of the area is above timberline.

GEOLOGY

According to G.S.C. Memoir 324, Nechako River Map Area, British Columbia, the eastern half of the "T" claim and the "U" claim are underlain by the Ootas Lake group. The Ootsa Lake group consists of basalt, andesite, related tuffs and breccias, minor rhyolites and dacite, conglomerate and greywacke. Its age is shown as cretaceous and (?) tertiary. The western half of the "T" claim is underlain by the older Hazelton group of middle to lower Juruassic age. This group consists of greywacke, argillite conglomerate, tuff, breccias, andesite and minor rhyolite as unit "6" on the sheet. Unit "5" is described as andesite, related tuffs and breccias, chert pebble conglomerate, shale and sandstone.

The geology of the claim areas was not noted during the geochemical survey as emphasis was placed only on the geochemical survey itself. Much of the area was covered with talus being on the slope of the Fawnie Range.

SURVEY GRID

The base lines controlling the grids lie on an east-west direction along the north and south boundaries of the "T" and "U" claims, as well as a baseline through the middle of the "T" claim. The 0+00 baseline starts at the north-west corner of the "T" claim known as 33 E and continues along the north boundary to 63 E, which is the south east corner of the "U" claim. The north east corner of "T" and the south west of "U" are contiguous. The cross lines are run at 100 m intervals and go from 33 E to 43+75 E on the "T" claim and from 53 E to 63 E on the "U" claim.

The base line was pickets and carins to support the pickets. The cross lines were completed using a Brunton compass and hip chains. Cross lines were marked by pickets and flagging.

A total of 5.5 km of base lines and 35 km of cross lines were established.

GEOCHEMICAL SURVEY

A total of 473 samples were collected on the "T" and "U" claims. These samples were assayed for arsenic, silver, copper, molybdenum, lead and zinc.

Soil samples of the upper "B" horizon were obtained at an average depth of 0.3 meters with the use of augers. These samples were taken at 100 meter intervals along the picket lines. The samples were then placed in kraft soil envelopes and delivered to Acme Analytical Laboratories Ltd., 852 East Hastings Street, Vancouver, B. C. The samples are dried for approximately 16 hours at 75° centigrade and sieved to -80 mesh. A 0.5 gram sample is digested with diluted aqua regia in a hot water bath for one hour and diluted with demineralized water. The determination of copper, lead, zinc, arsenic, molybdenum and silver are determined by atomic absorption from the solution. Silver is determined by atomic absorption using a background correction.

DISCUSSION OF RESULTS

A coincident silver, lead, zinc anomaly exists on the "T" claim starting from the north west corner and continuing toward the south east corner. The lead and zinc remain coincident, however the silver becomes more diffuse in nature towards the south east. Molybdenum and copper are negligible except for two erratic highs which was 42 parts per million Cu and 10 parts per million Mo. The highest values for lead, zinc, arsenic and silver were; Zn 1500 ppm, Pb 470 ppm, As 66 ppm and Ag 15 parts per 10 million.

On the "U" claim, no molybdenum, copper, lead anomalies of consequence are noted other than erratics. A zinc anomaly with a high of 790 parts per million was found in the south east corner. The arsenic and silver are coincident and diffuse in nature. Arsenic having a high of 28 parts per million and silver 8.4 parts per 10 million. The silver anomaly appears to cover the majority of the "U" claim.

A set of maps for the "T" and "U" claims are enclosed in the back of the report.

CONCLUSION

During June and July, 1980 a geochemical soil survey was carried out over the "T" and "U" claims. Several geochemical anomalies were located on these claims. These anomalies may have been caused by downslope dispersions of the enriched solutions along the creeks and lower areas.

RECOMMENDATIONS

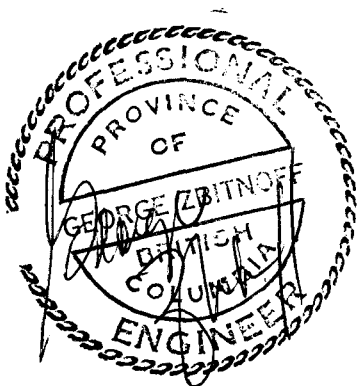
It is recommended that further work be carried out over the anomalous areas. A closer spaced geochemical soil grid with greater detail spent on direction of slopes and water flow. Also a detailed geological survey of the area to determine the origin of the anomalies.

EXPENDITURES

"T" and "U" CLAIMS

Personnel -

Ken Taylor	June 23rd to July 5th	\$ 771.81
Ron Wintermeyer	June 23rd to July 15th	1,370.80
Danny Wilson	"	1,245.45
Glenda Ness	July 6th to July 15th	432.90
Wendy Roberts	"	432.90
Food, accommodations & supplies		1,242.46
Transportation		1,324.16
Geochemical Assays		1,169.84
Report Preparation		<u>2,187.80</u>
TOTAL "T" and "U" Claims		<u>\$10,178.12</u>



STATEMENT OF QUALIFICATIONS

Name: Zbitnoff, George Wm.

Profession: Geologist

Professional

Associations: Member of the Association of Professional Engineers of the Province of Manitoba since 1969.

Member of the Association of Professional Engineers of the Province of British Columbia since 1973.

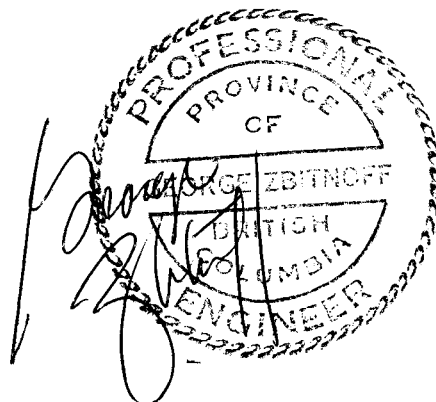
Experience: Pre graduation experience in geology with the Department of Mineral Resources.

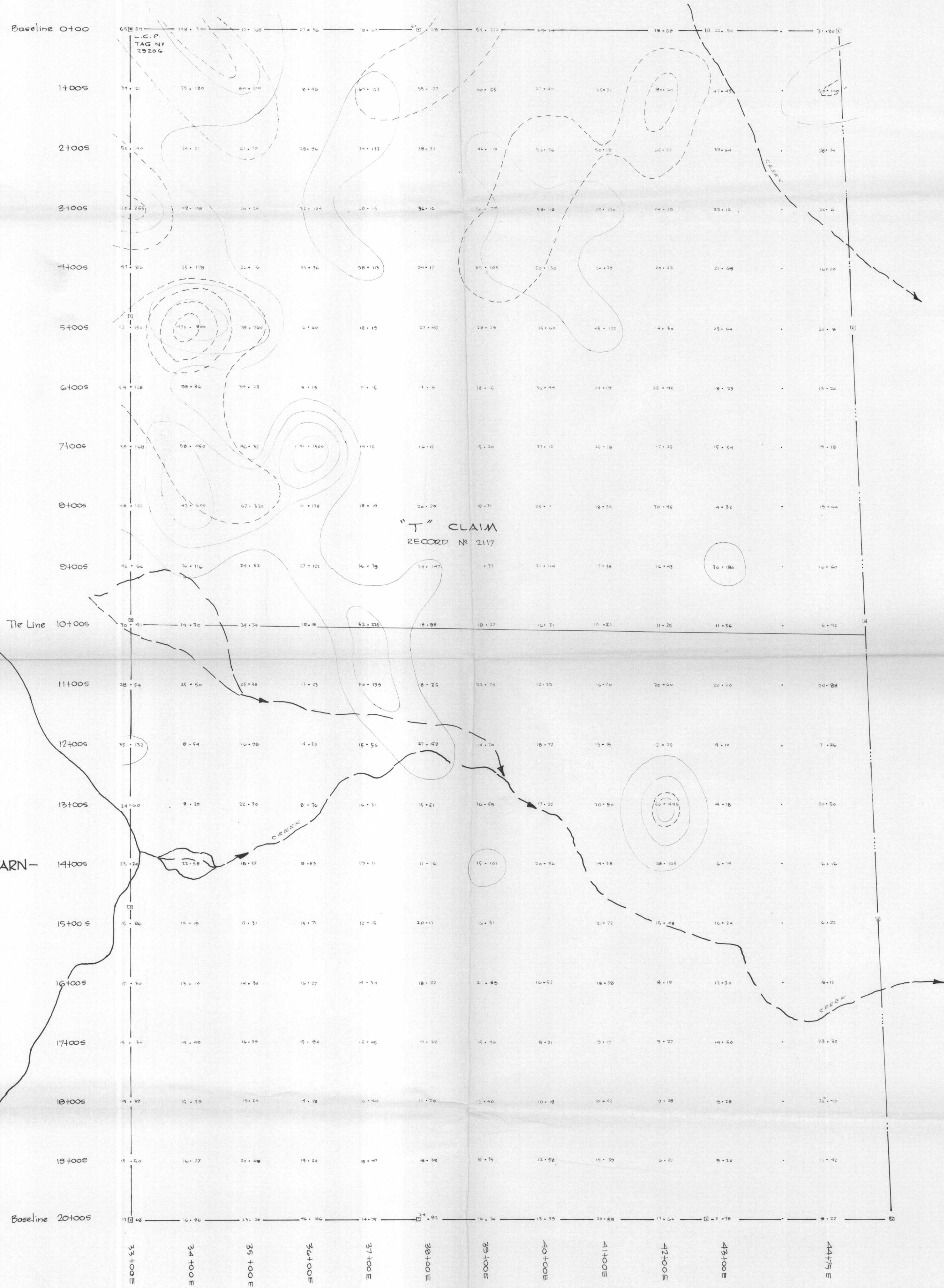
Two and one half years, field geologist with Hudson Bay Exploration and Development, Central Canada.

Six years, field and Resident Geologist with Noranda Exploration Ltd., Central Canada.

Nine years geologist and Assistant Manager with Granges Exploration Aktiebolag, Canadian Division.

Active experience in all geologic provinces of Canada and parts of the United States and Mexico.

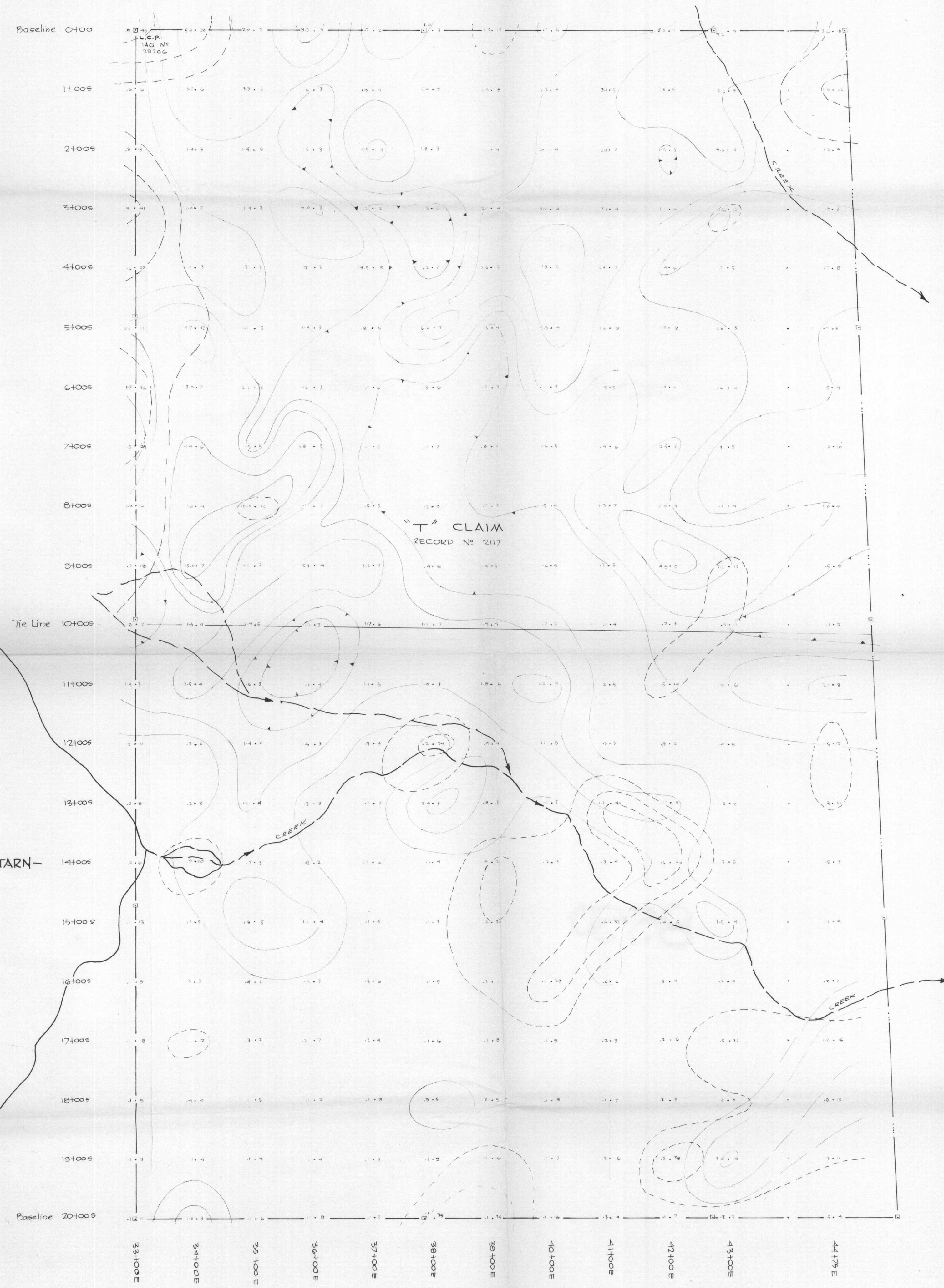




"T" CLAIM
RECORD NO 2117

-TARN-

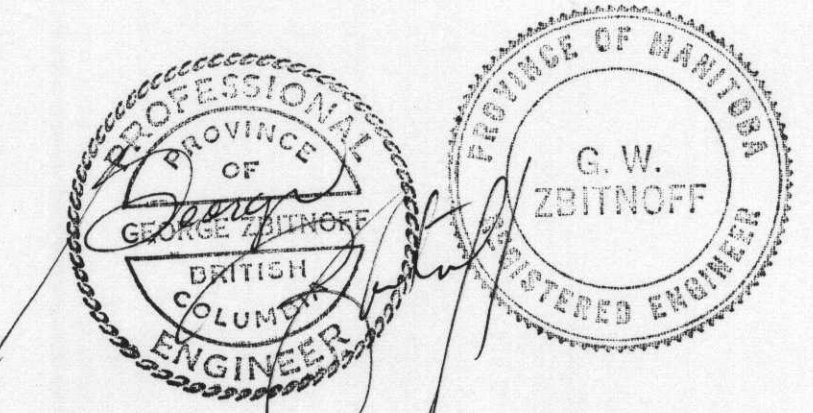
- LEAD & ZINC -
in p.p.m.
CONTOUR INTERVALS
Pb: 50 - 100 - 200 ETC.
Zn: 100 - 200 - 400 ETC.



"T" CLAIM
RECORD NO 2117

-TARN-

- SILVER & ARSENIC -
in p.p.m.
CONTOUR INTERVALS
Ag: 50 - 100 - 200 ETC.
As: 10 - 20 - 40 - 80 ETC.



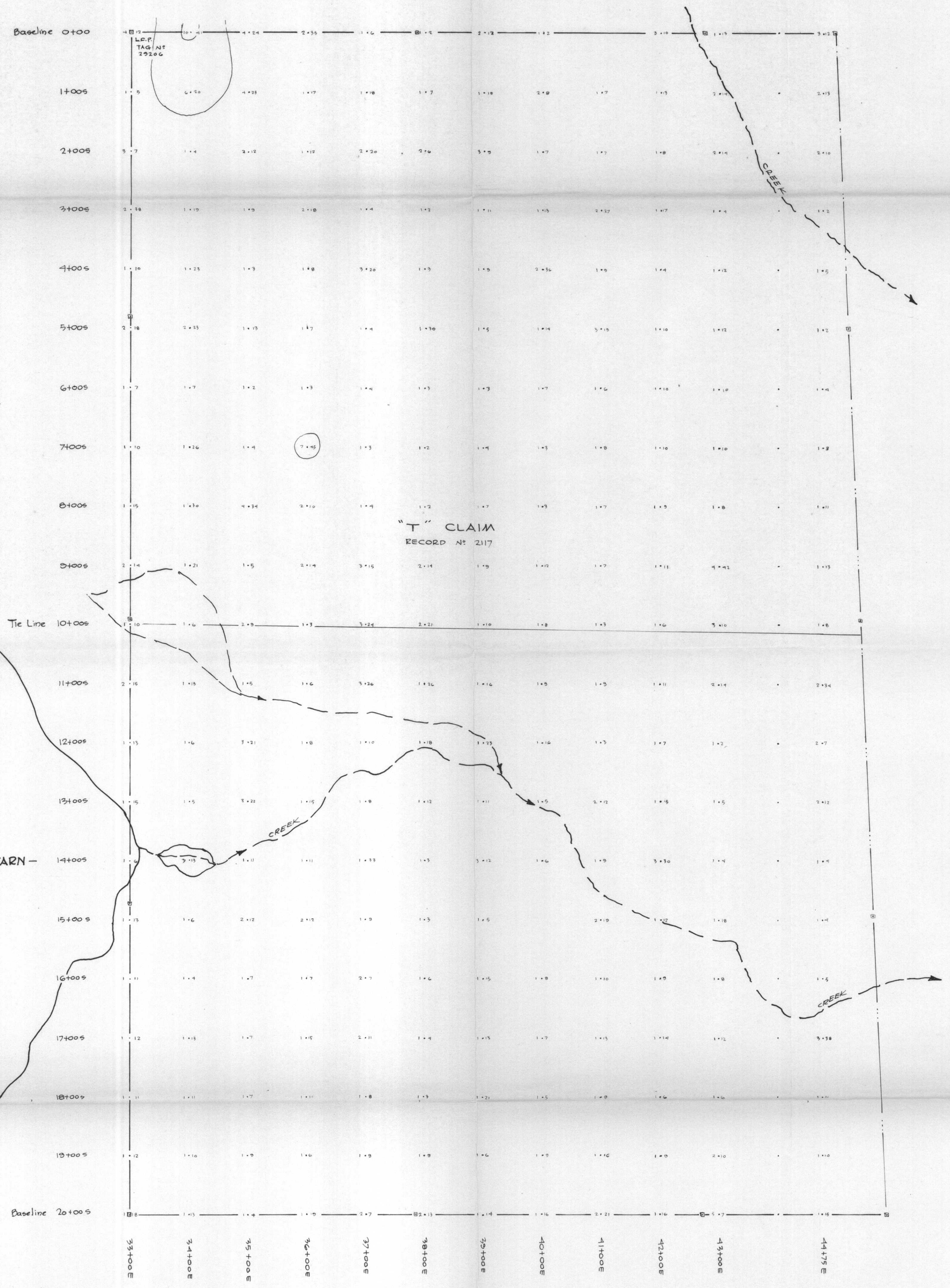
MINERAL RESOURCES BRANCH
ASSESSMENT REPORT
8550
NO.

NOTE: SEE MAP N1 2 FOR KEY MAPS	DRAWN BY: M.P.
LOCATED CLAIM POST	DATE: OCT 1980
CLAIM BOUNDARY LINE	Ag 50 - 100 - 200 ETC.
OUTLINE OF ANOMALOUS AREAS	As 10 - 20 - 40 - 80 ETC.
	SAMPLE LOCATION

GRANGES EXPLORATION AB
CANADIAN DIVISION
VANCOUVER OFFICE

SOILGEOCHEMICAL SURVEY FOR
LEAD, ZINC, SILVER & ARSENIC
CLAIM "T" (2117)
CAPOOSE JOINT VENTURE
CAPOOSE LAKE AREA B.C.

MAP N1 of 2
SCALE: 1:4000
PROJECT No: 70113
N.T.S. No: 55 F - GP

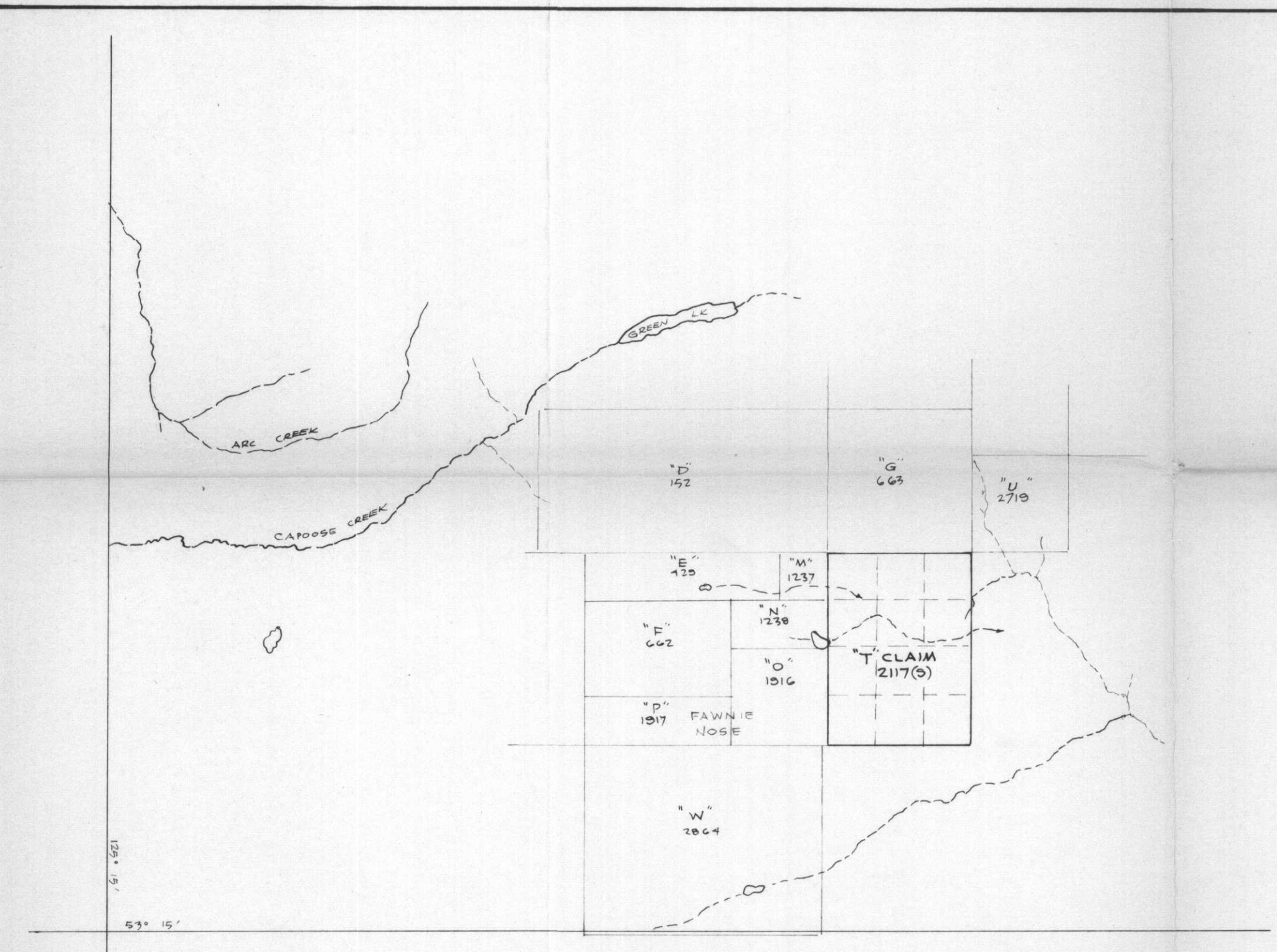


T CLAIM
RECORD # 2117

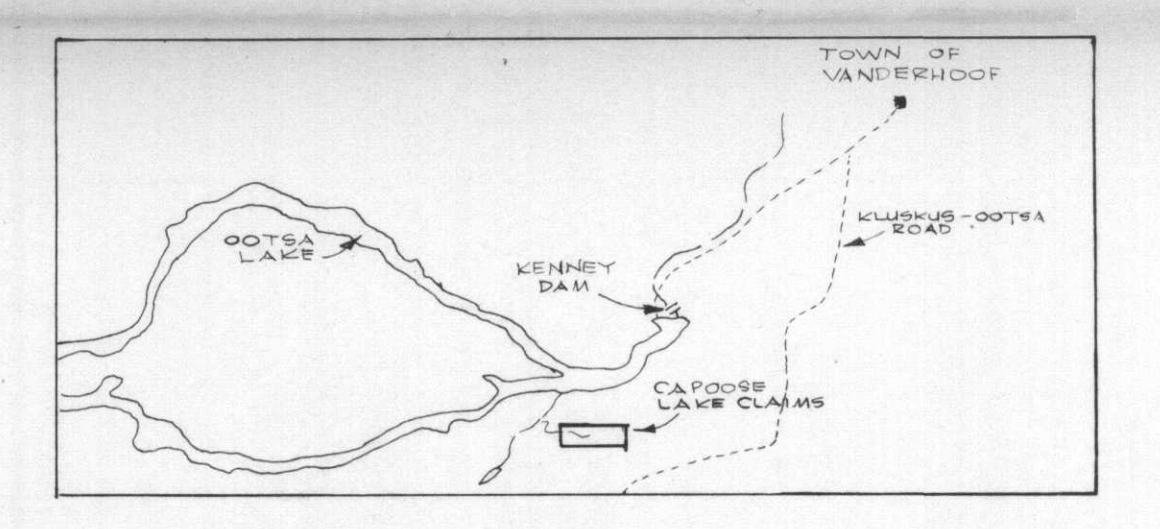
- TARN -

- MOLYBDENUM & COPPER -
in p.p.m.

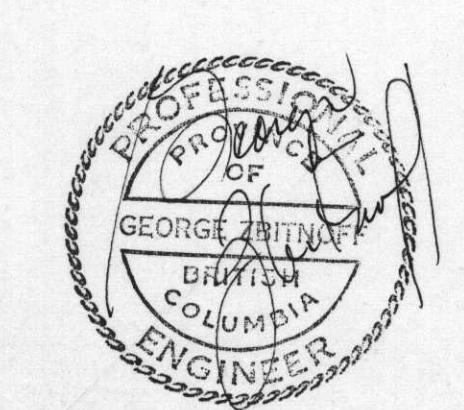
CONTOUR INTERVALS
M: 5 - 10 - 20 - 40 ETC
C: 50 - 100 - 200 - 400 ETC



CLAIMS
LOCATION PLAN
SCALE 1:50,000
TEASED FROM CLAIM MAP 03 F-6E



KEY MAP
SCALE 1:50,000



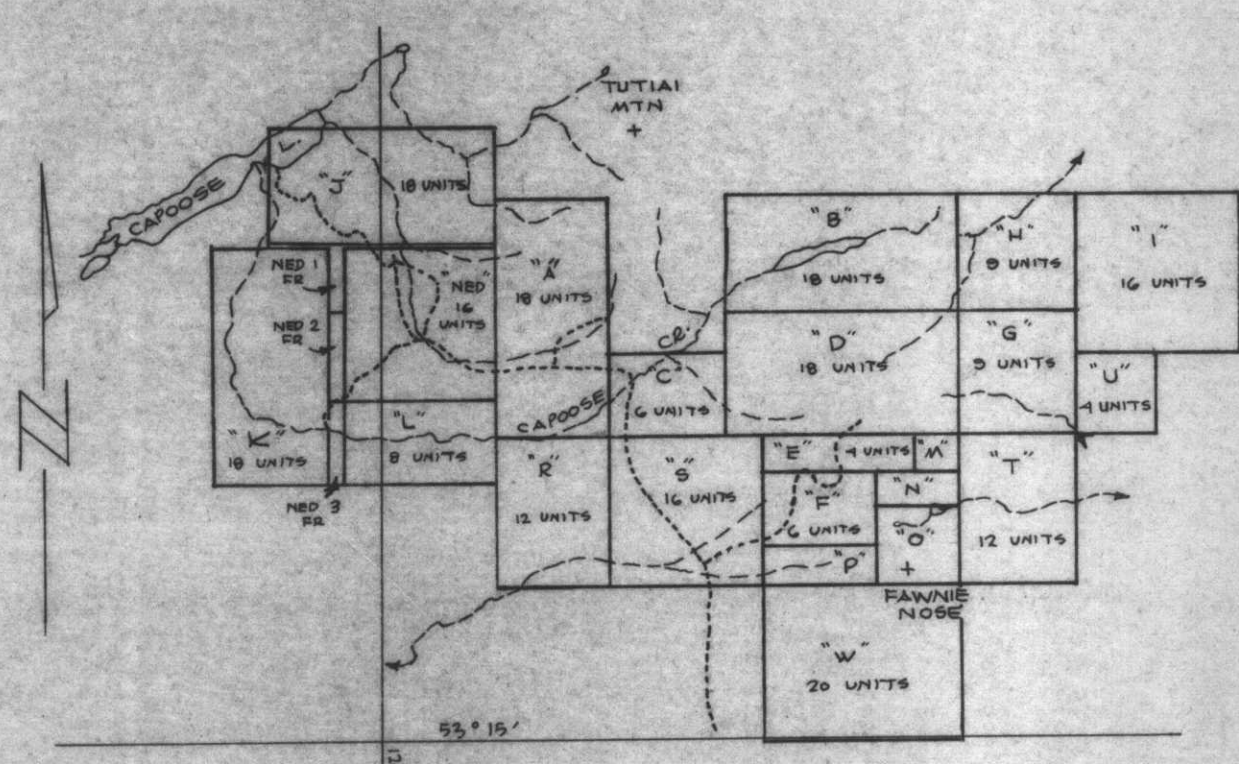
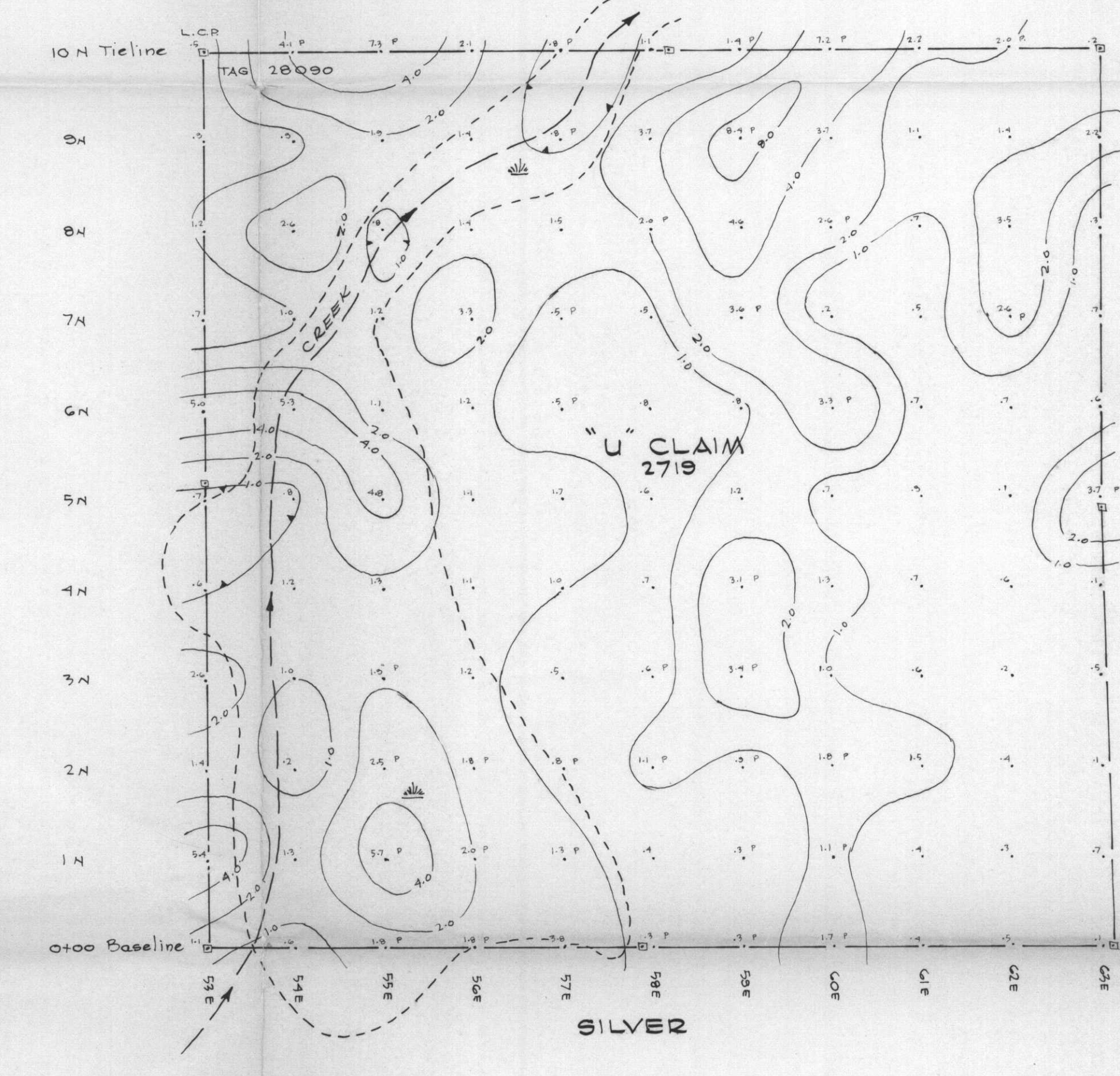
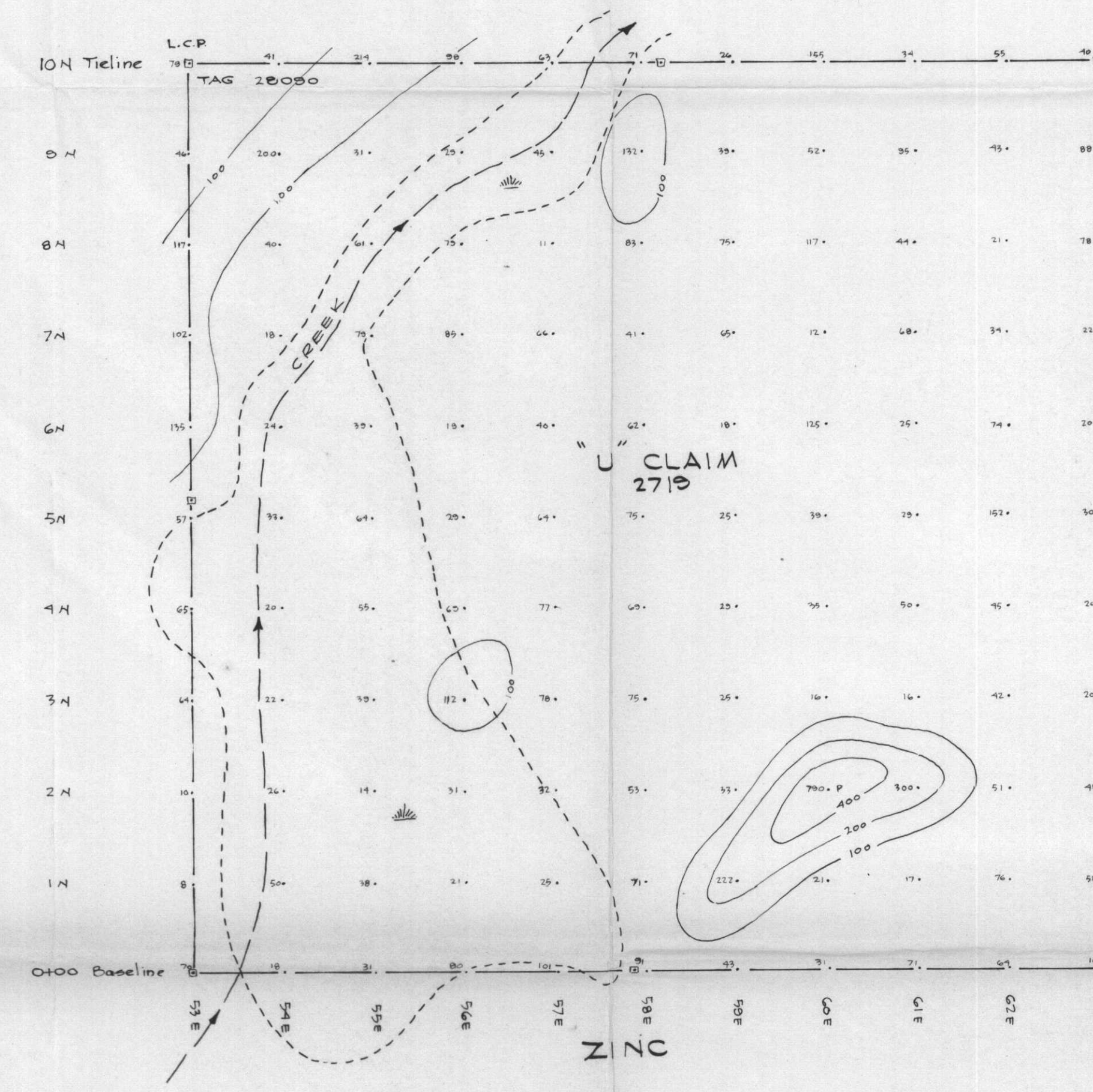
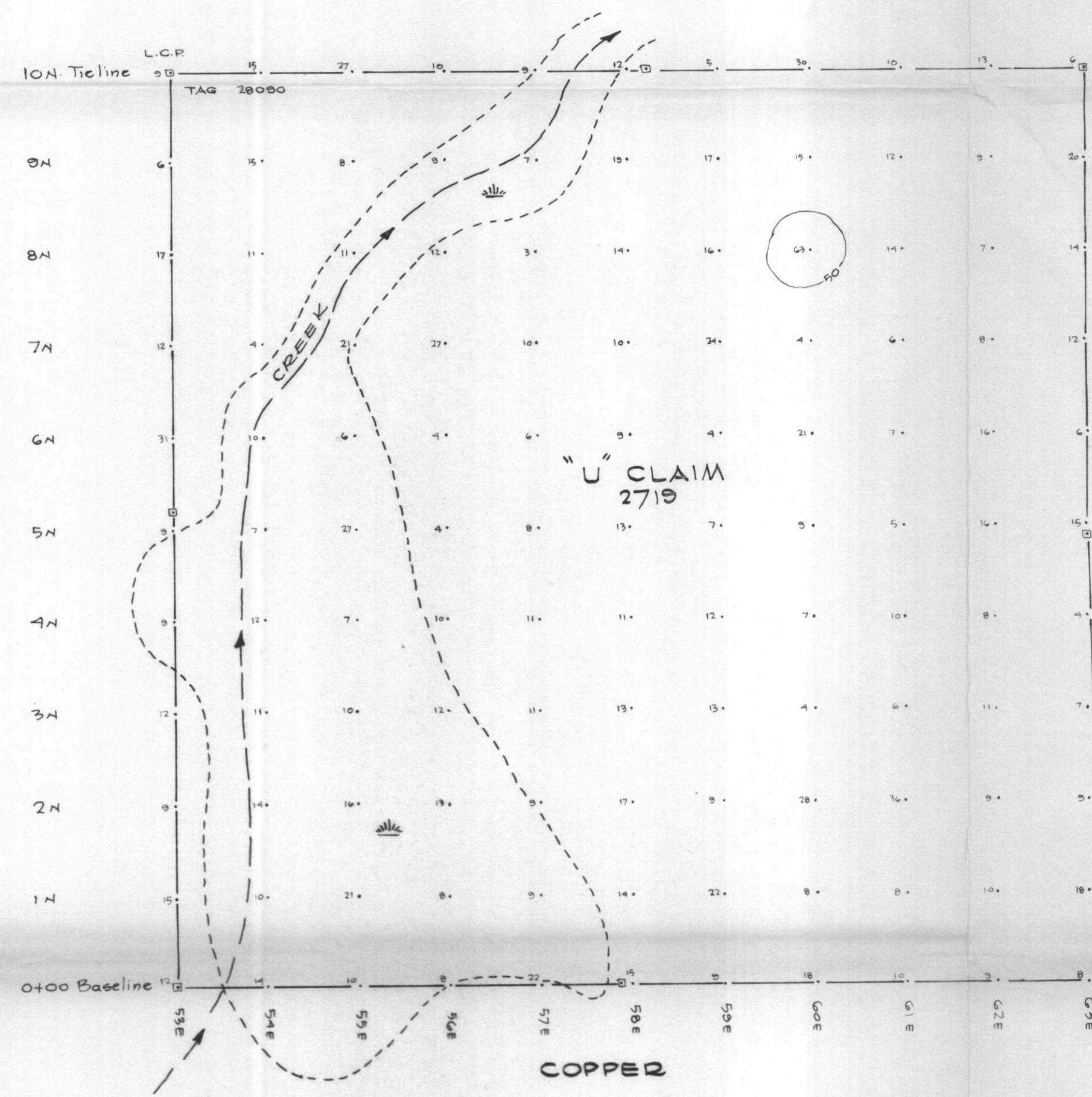
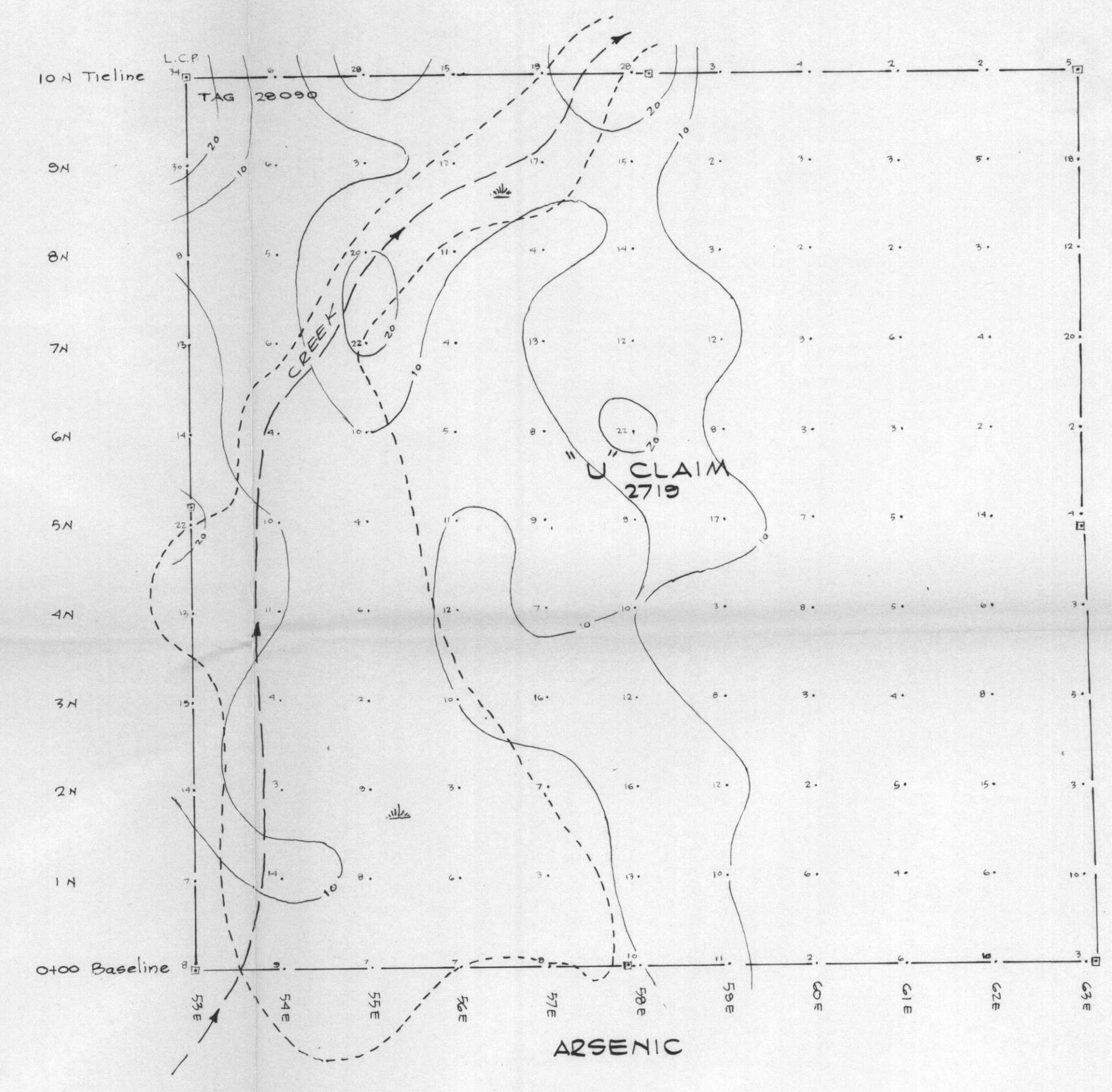
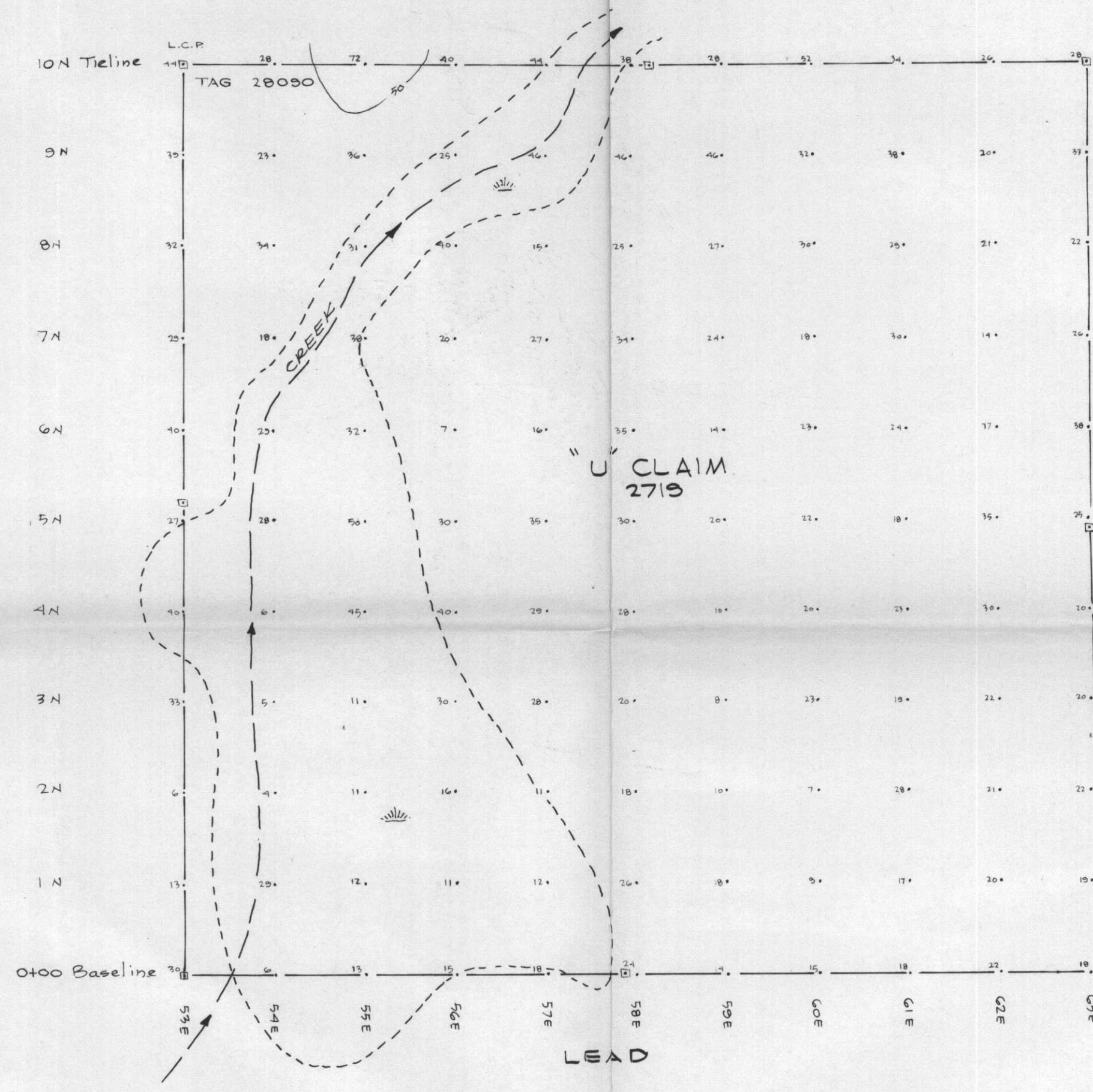
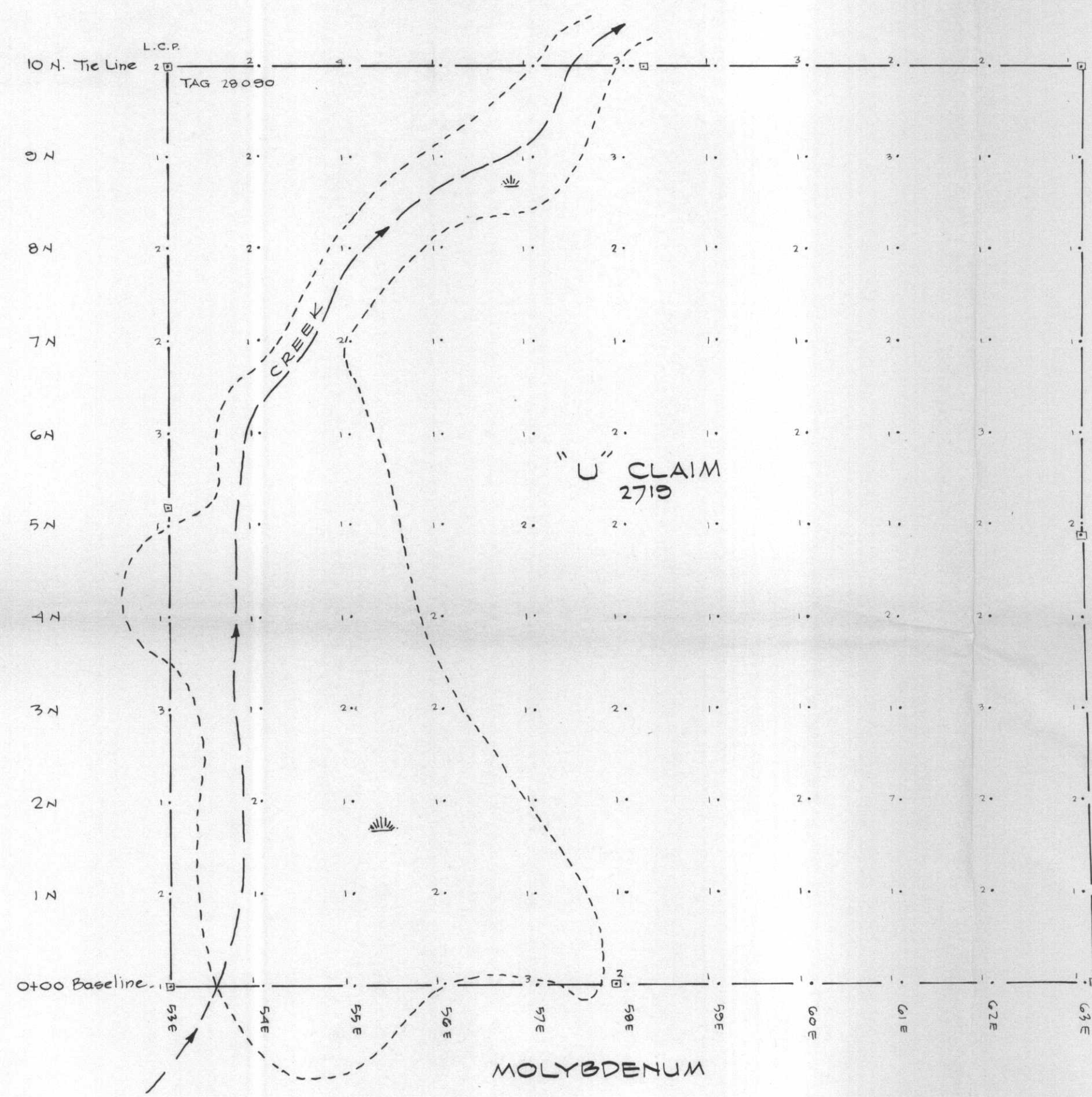
MINERAL RESOURCES BRANCH
ASSESSMENT REPORT
8550
NO.

	DRAWN BY: M.P. DATE: OCT 1980 SHEET 2 OF 2 IN P.P.M. SAMPLE LOCATION
--	---

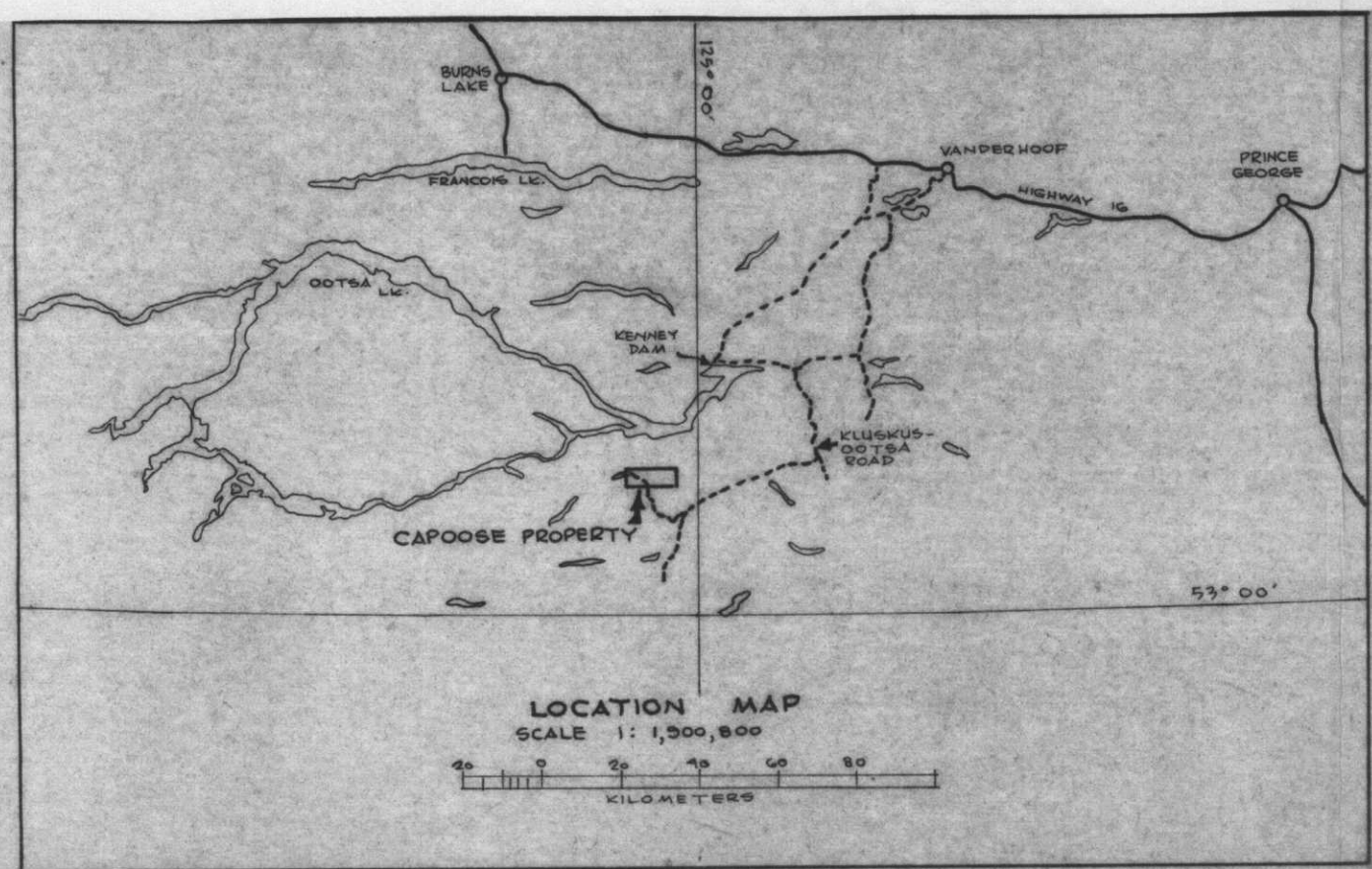
GRANGES EXPLORATION AB
CANADIAN DIVISION
VANCOUVER OFFICE

SOIL GEOCHEMICAL SURVEY FOR
MOLYBDENUM & COPPER
CLAIM # 2117
CAPOOSE JOINT VENTURE
CAPOOSE LAKE AREA, B.C.

MAP # 2 of 2
SCALE: 1:4000
PROJECT No.: 70113
N.T.S. No.: 03 F-6E



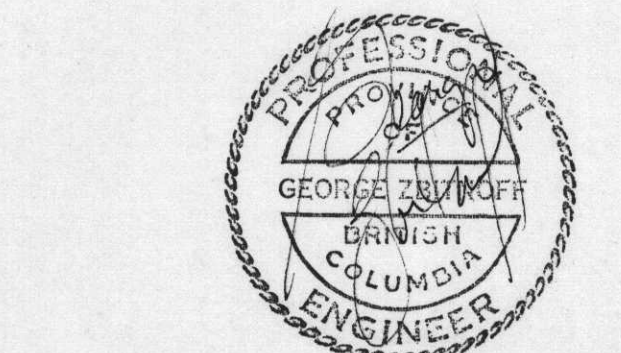
CLAIM MAP
SCALE 1:100,000
NTS. NO. 92 F-C



LOCATION MAP
SCALE 1:1,500,000

DRAWN BY: M.P.
 DATE: OCT 1980
 ASSEY IN P.P.M. SAMPLE LOCATION
 LOCATED CLAIM POST
 CLAIM BOUNDARY LINE
 OUTLINE OF ANOMALOUS AREAS

GRANGES EXPLORATION AB
 CANADIAN DIVISION
 VANCOUVER OFFICE



SOIL GEOCHEMICAL SURVEY FOR
 MOLYBDENUM, COPPER, LEAD, ZINC,
 SILVER AND ARSENIC.
 'U' CLAIM (2719)
 CAPOOSE JOINT VENTURE
 CAPOOSE LAKE AREA, B.C.

MINERAL RESOURCES BRANCH
 ASSESSMENT REPORT
8550
 NO.

SCALE: 1:5000
 PROJECT No: 70113
 N.T.S. No: 92 F-CB